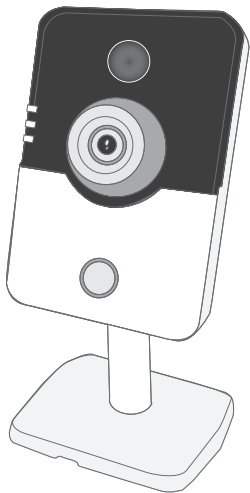


# Wireless IP Camera Operation Guide



Model NO. BNK-CAM01

Applicant Name: Bunker360 LLC

Address: 80 SW 8th Street Suite 2000 Miami, FL 33130

Telephone: +1-305-423-7112

First of all the cellphone should keep in the state of surfing the internet WIFI support above Ios4. 3 Android2. 2

### 1.Install the software on cellphone.

Android mobile phone could search and download the “K10” in Google play. Or use UC browser to scan the QR code outside the package box, download and install it.

Apple mobile phone could enter the IOS APP Store, search “K10”, download and install it. After download, open the installation program, and then install it.

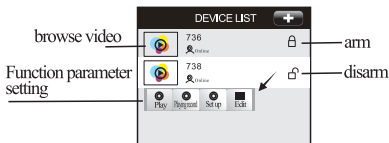
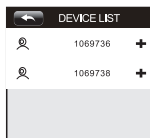


## 2.Register Account

K10 support register with email address. Open the software, click”register”, input the email address and set a password, and then click “register”.

### 3.Add and delete the device

The device should be connected with the network line and plug in. If the cellphone's wifi network is same as the device, pls open the tools and click “shake”, it will refresh the new device automatically. Choose one device and enter the interface of device account setting, set the name of device and a new administrative password, click “save” in the top right corner. Add device and set the device password successfully. The device account can also be added through the Local Area Network or manually.



choose one device account, long press the icon in the middle, will pop-up a window, click delete, then delete the device successfully. Note: Before delete device, it need to set the alarm push ID, click it into the alarm push ID interface and delete the device account, otherwise once trigger the device, it will still push alarm to the phone.

#### 4.Function operate

**1. Browse the video:** at the device list interface, click the left icon of device, into to the interface of video browsing.

**2. Setting the function parameter:** at the device list interface, click the middle blank area of device, into setting the functional parameter interface.

**A. Playback:** click it, into the TF card video playback interface. The interface will show all the TF card video, click one will play it automatically

Note: the TF card only support the FAT 32 file system, support 64G at most.

**B. Alarm logs:** click it, into the interface of query the alarm record. It can storage 150 logs of alarm, if back to factory set, the logs will be empty.

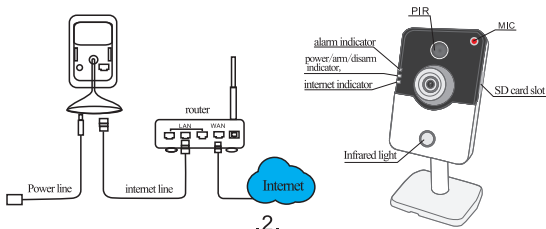
**C. Settings,** click it, into setting the function parameter interface, can set the device time, change password, set the wifi, modify the alarm set and video set

**D. Edit:** click it, into the user login interface, can modify the device name and password

**5.Reset:** long press reset key ,and release it until hear two sound, the device reset successfully.

#### 6. Device connecting

Insert the internet line into device and connect to the router, insert power adapter and power on, power indicator(green light) on, the IP will be allotted by router automatically, then confirm the indicator(yellow light) is on or off, if it is off, please check the internet line connect successfully or not, setting of router is correct or not.



## Status indicator

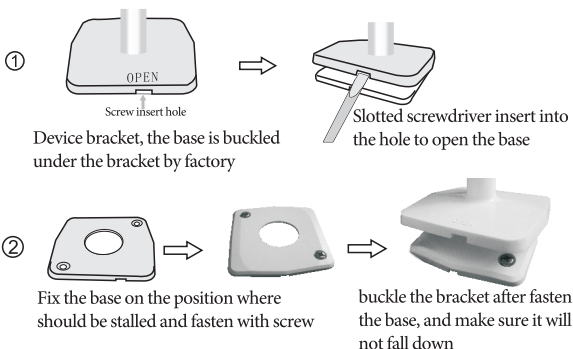
Alarm indicator: Light on means device alarm.

Arm/disarm indicator: Orange means arm, green means disarm.

Internet indicator: Light means server connect successfully, blinking means video recording or browsing.

## 7. Instruction of installing bracket

Insert the slotted screwdriver directly into the buckle of the OPEN of bracket, prize up the fixed board of bracket by screw, fix the bracket of device after fixing the board and fasten it.



### Caution:

This device complies with Part 15 of the FCC rules and Industry Canada license-exempt RSS standard(s). Operation is subject to the following two conditions: (1) this device may not cause harmful interference, and (2) this device must accept any interference received, including interference that may cause undesired operation.

The manufacturer is not responsible for any radio or TV interference caused by unauthorized modifications or change to this equipment. Such modifications or change could void the user's authority to operate the equipment. This radio transmitter (identify the device by certification number or model number if Category II) has been approved by Industry Canada to operate with the antenna types listed below with the maximum permissible gain indicated. Antenna types not included in this list, having a gain greater than the maximum gain indicated for that type, are strictly prohibited for use with this device.

This equipment has been tested and found to comply with the limits for a Class B digital device, pursuant to part 15 of the FCC Rules. These limits are designed to provide reasonable protection against harmful interference in a residential installation. This equipment generates, uses and can radiate radio frequency energy and, if not installed and used in accordance with the instructions, may cause harmful interference to radio communications. However, there is no guarantee that interference will not occur in a particular installation. If this equipment does cause harmful interference to radio or television reception, which can be determined by turning the equipment off and on, the user is encouraged to try to correct the interference by one or more of the following measures:

- Reorient or relocate the receiving antenna.

- Increase the separation between the equipment and receiver.
- Connect the equipment into an outlet on a circuit different from that to which the receiver is connected.
- Consult the dealer or an experienced radio/TV technician for help.

The device has been evaluated to meet general RF exposure requirement.

To maintain compliance with FCC's RF exposure guidelines, this equipment should be installed and operated with a minimum distance of 20cm between the radiator and your body.