

Welcome to Tide Smart Tray™

You are busy. Sometimes you wash a lot of clothes other times not so much. No one likes to stop what they are doing to run out and get more laundry detergent. But, subscriptions can't adapt to your busy lifestyle. Sometimes an order will come too early and sometimes too late.

Tide Smart Tray™ keeps track of how much detergent you have left. When you are running low you will get a text confirming your next order. If it looks correct, you don't have to do anything! Your detergent will arrive in plenty of time so no more running out of detergent at the last minute.

Never run out of Tide again.

What will you do with all the time you save???

IMPORTANT SAFETY PRECAUTIONS

When using electrical products, basic safety precautions should be always followed. Read all instructions before using. This product is safe under normally and reasonably foreseeable misuse operating conditions. If the product is operating improperly contact P&G support. It must be returned to P&G for any service or repair.

Use Guidelines:

- Do not open or modify the product except for battery removal and replacement.
- Do not disassemble or attempt to service this product because there is a risk of radiation exposure.
- Do not immerse product in any liquid or expose to heat or moisture.
- If the product is exposed to out-of-range temperature environments, power off the device until temperature has stabilized within specified operating temperature range.
- This is not a Children's product. It is not intended for a use by children under 14 years old.

This product complies with relevant legal requirements for Restriction of Hazardous substances (RoHS) and management of waste electronic and electrical equipment (WEEE)

Refer to a Product Quick Start Guide for use instructions

Battery Warning! Improperly replaced batteries may present a risk of leak or explosion & a personal injury. Risk of Fire or Explosion if a battery is replaced by an incorrect type. Ensure that batteries are installed correctly by following the instructions/markings provided inside battery compartment.

Use only LR6 AA Alkaline batteries. DO NOT use rechargeable Ni-MH or Li-ion Batteries.

Mistreated rechargeable batteries may present a risk of fire or chemical burn. Do not expose batteries to conducting materials, moisture, liquid or a heat above 54C (130F).

Any changes or modifications not expressly approved by the party responsible for compliance could void the user's authority to operate this equipment.

This equipment should be installed and operated with a minimum distance of 20 cm between the radiator and your body.

Product Supports following RF Protocols,

LTE CAT M1 (Frequency Range: 698-3000 MHz, CAT M1 Bands: 2, 4, 5 & 12, Antenna: PCB Antenna Taoglas FXUB63.07.0150C, Antenna Gain: 5.00 dBi peak) BLE (Frequency Range: 2400-2500 MHz, Bluetooth 5 Data Rates: 2 Mbps, 1 Mbps, 500 Kbps, 125 Kbps, Antenna: On Board Chip Antenna)

FCC Notes

This Device complies with the Part 15 of the FCC Rules.

Operation is subject to the following two conditions:

- (1) This Device may not cause harmful Interference
- (2) This Device must accept any interference received, including interference that may cause undesired operation

NOTE: This equipment has been tested and found to comply with the limits for a Class B digital device, pursuant to part 15 of the FCC Rules. These limits are designed to provide reasonable protection against harmful interference in a residential installation. This equipment generates, uses and can radiate radio frequency energy and, if not installed and used in accordance with the instructions, may cause harmful interference to radio communications. However, there is no guarantee that interference will not occur in a particular installation. If this equipment does cause harmful interference to radio or television reception, which can be determined by turning the equipment off and on, the user is encouraged to try to correct the interference by one or more of the following measures:

- Reorient or relocate the receiving antenna.
- Increase the separation between the equipment & receiver.
- Connect the equipment into an outlet on a circuit different from that to which the receiver is connected.
- Consult the dealer or an experienced radio/TV technician for help.

DO NOT use battery if it appears to be leaking, discolored, deformed, peeled off or in a way abnormal. This device integrates Boron LTE CAT M1 module (Model Number: BRN402) from Particle Industries, Inc. (<https://www.particle.io>), having FCC ID : 2AEMI-BRN402 for radio communication. The module is integrated to this product as per the module integration rule. Battery life varies with the usage. Non operational batteries should be discarded according to local laws. Keep batteries away from children. Do not dispose batteries with household waste.

Warning! Use of controls, adjustments or performance of procedures beyond those specified herein may result in hazardous radiation exposure.

FCC ID: 2AG9A921101



smart tray

Set up your Device

1. Turn the power on.

The power switch is located on the bottom of the tray. Once the tray is set, leave the power on, the batteries should last over a year.

2. Wait for LED to start blinking.

If LED does not blink within 10 seconds, power off and on again.

3. Place the tray in safe, level location.

Keep your Tide Smart Tray close to your washing machine but out of the way of pets or small children.

4. Place the product on the tray.

Only use specially marked Tide packages. The tray will not recognize other products and can't reorder them accurately.

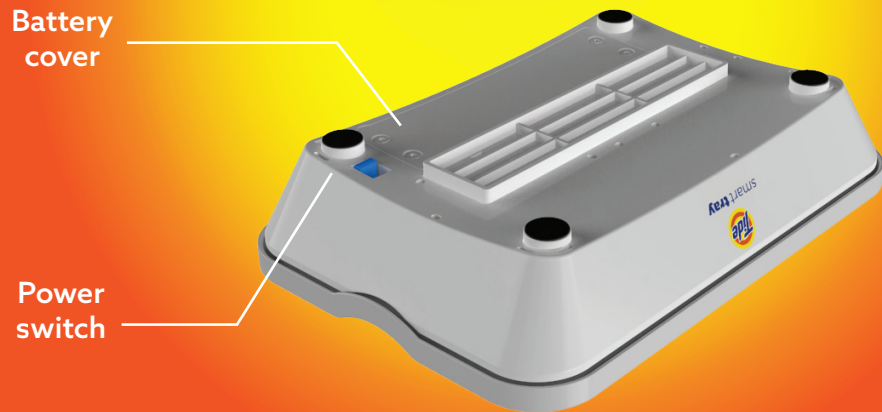
5. Use your detergent normally.

When your detergent is getting low you will receive a text to confirm your order. You have 24 hours to change the order or delay the date you will receive it.

There is nothing else to do, your detergent will arrive at your door before you run out.



Only use detergent packages with the following logo



If you are experiencing any problems please contact support at soapbox.im@pg.com or text 1-833-243-6356

Reference

Replacing Batteries:

1. Switch off power and locate the battery cover on the bottom of the tray.
2. Using an allen key (not included) unscrew the the battery compartment.
3. Replace batteries using only 1.5V AA size alkaline batteries.
4. Make sure the battery is oriented to match the polarity correctly (+)&(-).
5. Replace battery cover and retighten screws.
6. Switch on the tray and place as per user instructions provided.
7. Dispose of spent batteries responsibly.

LED color codes

- **Solid magenta light** – tray is operating properly – continue to use normally
- **Blinking magenta light** – product is not on the tray – center product on the tray
- **Blinking orange light** – tray is not functioning properly – please contact support

In the event the tray falls from 3 ft (1 meter) or higher please power the tray off and on and then contact support via text to recalibrate.

