

# Internal Photos Version 1

**Description:** Diaper Sensor  
**Model Name:** Lumi Soft Touch Sensor  
**Model Number:** DS5000  
**FCC ID:** 2AG9A61810

**Procter & Gamble**  
One Procter & Gamble Plaza  
Cincinnati, OH 45202

By

TEM Consulting, LP  
140 River Rd.  
Georgetown, TX 78628

February 2019

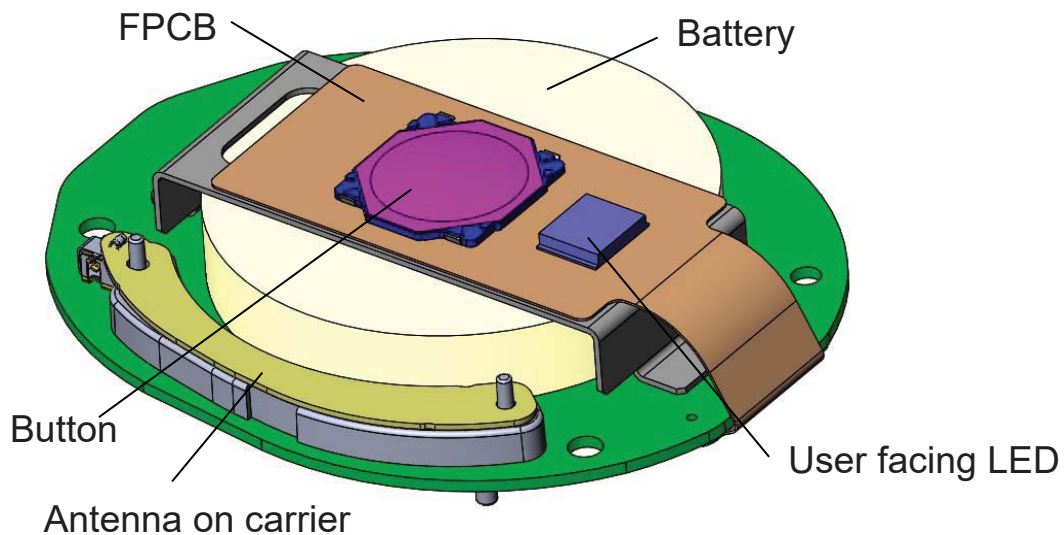


Figure 1 - Lumi Soft Touch Sensor – Internal Diagram – Top View

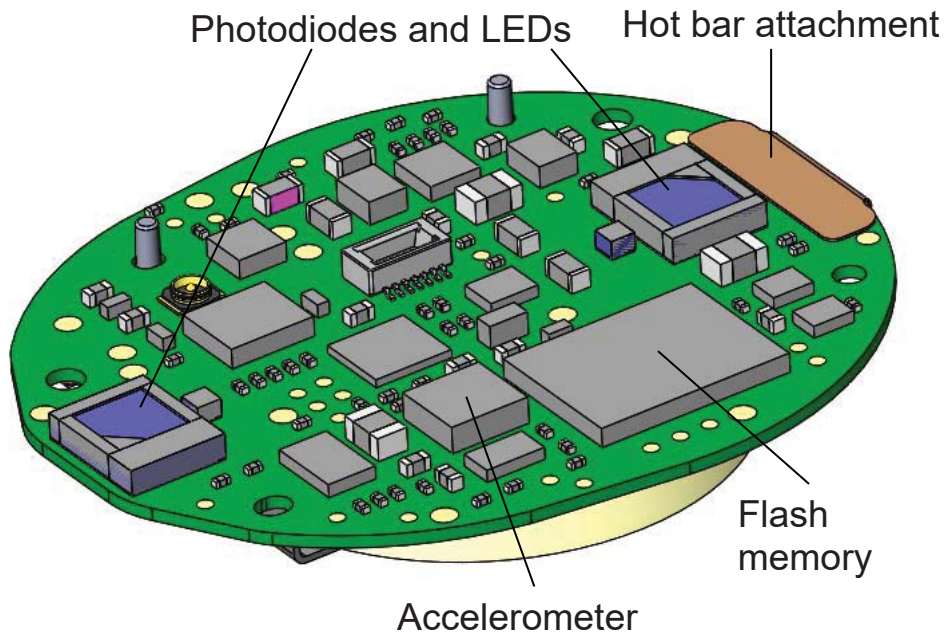


Figure 2 - Lumi Soft Touch Sensor – Internal Diagram – Bottom View

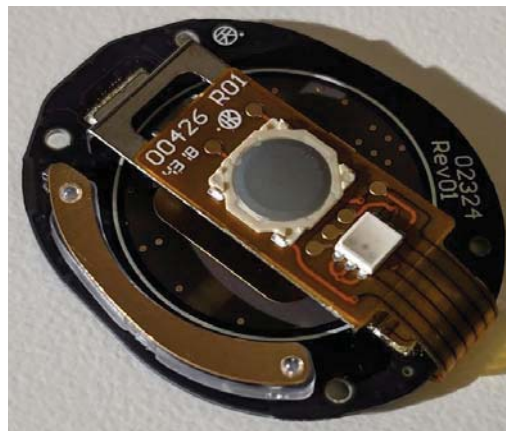


Figure 3 - Lumi Soft Touch Sensor – Internal Photo – Top View

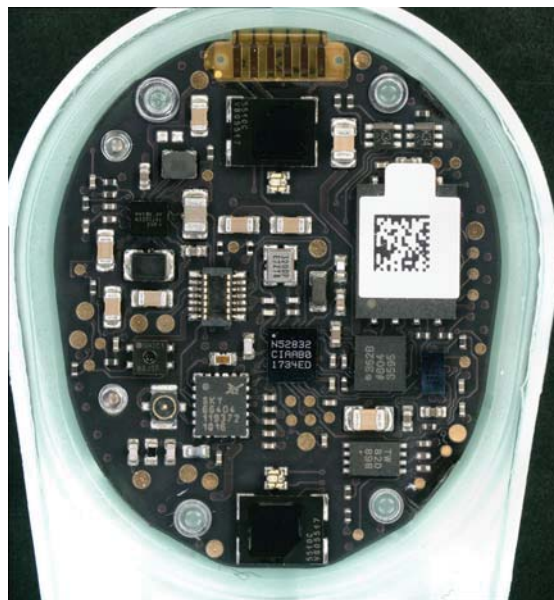


Figure 4 - Lumi Soft Touch Sensor – Internal Photo – Bottom View

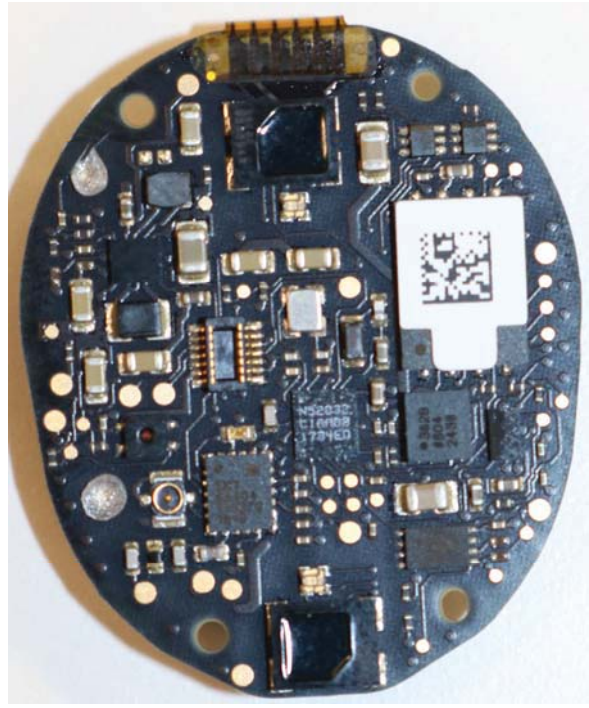
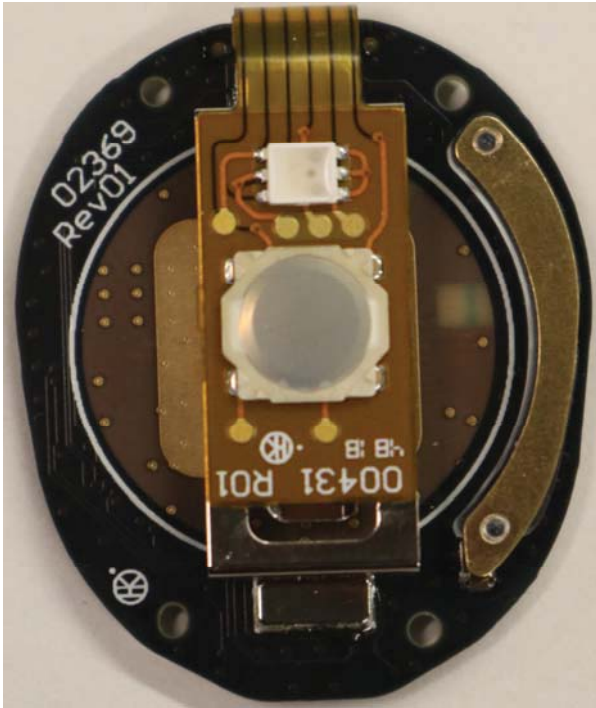
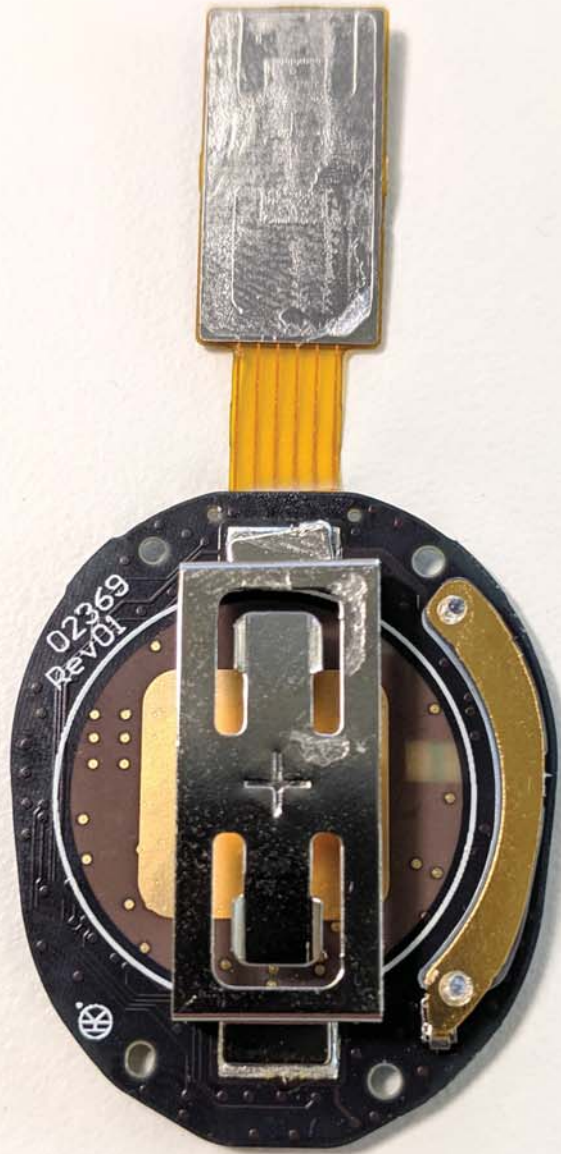
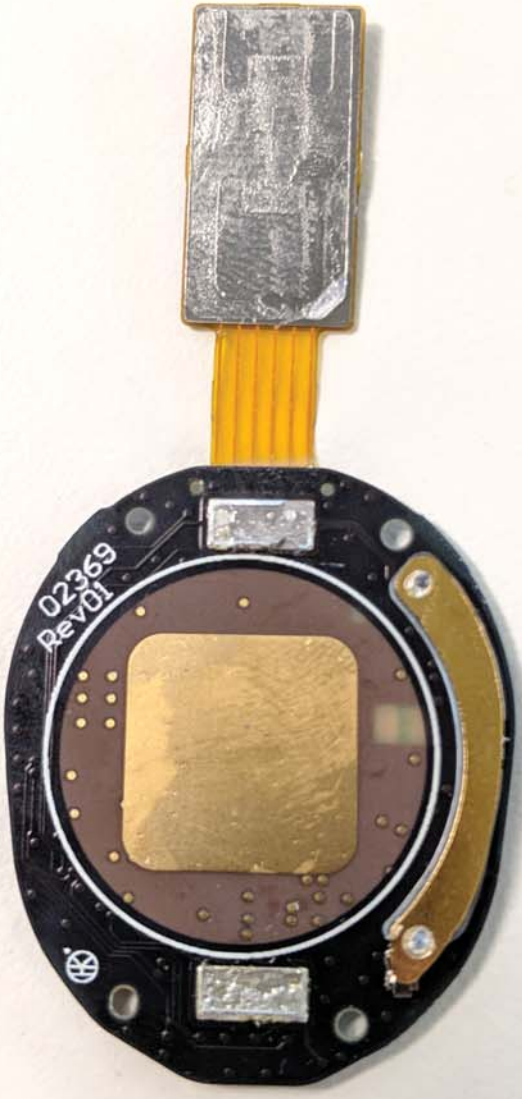


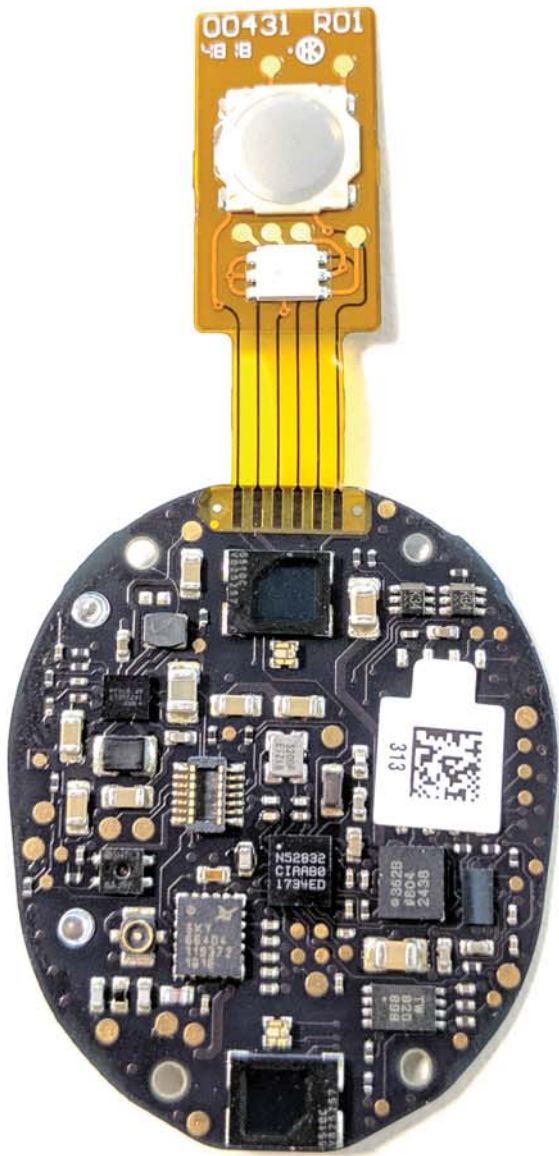
Figure 5 - Lumi Soft Touch Sensor PWB – Top & Bottom View





02369  
Rev01





00431 R01

18 18



313

N52832  
C1A888  
1794ED

9512  
9512  
82982

TW  
8530