



FCC TEST REPORT

FOR

WizarPos International Co., Ltd.

Smart POS

Test Model: WIZARPOS UPT

Prepared for : WizarPos International Co., Ltd.
Address : 4F, No 507 Wuning Rd, Shanghai, China

Prepared by : Shenzhen LCS Compliance Testing Laboratory Ltd.
Address : 101, 201 Bldg A & 301 Bldg C, Juji Industrial Park Yabianxueziwei, Shajing Street, Baoan District, Shenzhen, 518000, China
Tel : (+86)755-82591330
Fax : (+86)755-82591332
Web : www.LCS-cert.com
Mail : webmaster@LCS-cert.com

Date of receipt of test sample : July 29, 2022
Number of tested samples : 2
Sample No. : A072922029-1, A072922029-2
Serial number : Prototype
Date of Test : July 29, 2022 ~ August 19, 2022
Date of Report : August 22, 2022





FCC TEST REPORT
FCC CFR 47 PART 15 C (15.225)

Report Reference No. : LCSA072922029EG

Date of Issue : August 22, 2022

Testing Laboratory Name : Shenzhen LCS Compliance Testing Laboratory Ltd.

Address : 101, 201 Bldg A & 301 Bldg C, Juji Industrial Park Yabianxueziwei, Shajing Street, Baoan District, Shenzhen, 518000, China

Testing Location/ Procedure : Full application of Harmonised standards
Partial application of Harmonised standards
Other standard testing method

Applicant's Name : WizarPos International Co., Ltd.

Address : 4F, No 507 Wuning Rd, Shanghai, China

Test Specification

Standard : FCC CFR 47 PART 15 C(15.225)

Test Report Form No : LCSEMC-1.0

TRF Originator : Shenzhen LCS Compliance Testing Laboratory Ltd.

Master TRF : Dated 2011-03

Shenzhen LCS Compliance Testing Laboratory Ltd. All rights reserved.

This publication may be reproduced in whole or in part for non-commercial purposes as long as the Shenzhen LCS Compliance Testing Laboratory Ltd. is acknowledged as copyright owner and source of the material. Shenzhen LCS Compliance Testing Laboratory Ltd. takes no responsibility for and will not assume liability for damages resulting from the reader's interpretation of the reproduced material due to its placement and context.

Test Item Description : Smart POS

Trade Mark : WIZARPOS

Test Model : WIZARPOS UPT

Ratings : Please refer to page 6

Result : Positive

Compiled by:

Diamond Lu

Diamond Lu/ Administrator

Supervised by:

Cary Luo

Cary Luo/ Technique principal

Approved by:

Gavin Liang

Gavin Liang/ Manager





FCC -- TEST REPORT

Test Report No. : LCSA072922029EG	<u>August 22, 2022</u> Date of issue
--	---

Test Model.....	: WIZARPOS UPT
EUT.....	: Smart POS
Applicant.....	: WizarPos International Co., Ltd.
Address.....	: 4F, No 507 Wuning Rd, Shanghai, China
Telephone.....	: /
Fax.....	: /
Manufacturer.....	: WizarPos International Co., Ltd.
Address.....	: 4F, No 507 Wuning Rd, Shanghai, China
Telephone.....	: /
Fax.....	: /
Factory.....	: /
Address.....	: /
Telephone.....	: /
Fax.....	: /

Test Result	Positive
--------------------	-----------------

The test report merely corresponds to the test sample.
 It is not permitted to copy extracts of these test result without the written permission of the test laboratory.





Revision History

Report Version	Issue Date	Revision Content	Revised By
000	August 22, 2022	Initial Issue	---





TABLE OF CONTENTS

- 1. GENERAL INFORMATION 6**
 - 1.1 Description of Device (EUT)6
 - 1.2 Host System Configuration List and Details 8
 - 1.3 External I/O 8
 - 1.4 Description of Test Facility 8
 - 1.5 Statement of The Measurement Uncertainty9
 - 1.6 Measurement Uncertainty 9
 - 1.7 Description of Test Modes9
- 2. TEST METHODOLOGY 10**
 - 2.1. EUT Configuration 10
 - 2.2. EUT Exercise10
 - 2.3 General Test Procedures10
- 3. SYSTEM TEST CONFIGURATION 11**
 - 3.1. Justification 11
 - 3.2. EUT Exercise Software11
 - 3.3. Special Accessories 11
 - 3.4. Block Diagram/Schematics 11
 - 3.5. Equipment Modifications11
 - 3.6. Test Setup11
- 4. SUMMARY OF TEST RESULTS 12**
- 5. RADIATED MEASUREMENT 13**
 - 5.1. Radiated Emission13
 - 5.2. Field Strength of Fundamental Emissions and Mask Measurement20
- 6. BANDWIDTH OF THE OPERATING FREQUENCY 22**
 - 6.1. Standard Applicable 22
 - 6.2. Test Result22
- 7. FREQUENCY STABILITY MEASUREMENT 23**
 - 7.1 Standard Applicable 23
 - 7.2 Test Result23
- 8. LINE CONDUCTED EMISSIONS 24**
 - 8.1. Standard Applicable 24
 - 8.2. Block Diagram of Test Setup24
 - 8.3. Test Results24
- 9. ANTENNA REQUIREMENTS 27**
 - 9.1 Standard Applicable 27
 - 9.2 Antenna Connected Construction27
- 10. LIST OF MEASURING EQUIPMENTS 28**
- 11. TEST SETUP PHOTOGRAPHS OF EUT 29**
- 12. EXTERIOR PHOTOGRAPHS OF THE EUT 29**
- 13. INTERIOR PHOTOGRAPHS OF THE EUT 29**





1. GENERAL INFORMATION

1.1 Description of Device (EUT)

EUT	: Smart POS
Test Model	: WIZARPOS UPT
Power Supply	: Input: DC 24V For AC Adapter(model: AD65CM240250A): Input: 100-240V~, 50/60Hz, 1.5A Max Output: 24V=2.5A 60.0W For AC Adapter(model: ADP-60D24): Input: 100-240V~, 50/60Hz, 1.5A MAX Output: 24V=2.5A
Hardware Version	: 1.0.0
Software Version	: 1.0.0
Bluetooth	:
Frequency Range	: 2402MHz~2480MHz
Channel Number	: 79 channels for Bluetooth V4.1 (DSS) 40 channels for Bluetooth V4.1 (DTS)
Channel Spacing	: 1MHz for Bluetooth V4.1 (DSS) 2MHz for Bluetooth V4.1 (DTS)
Modulation Type	: GFSK, $\pi/4$ -DQPSK, 8-DPSK for Bluetooth V4.1(DSS) GFSK for Bluetooth V4.1 (DTS)
Bluetooth Version	: V4.1
Antenna Description	: FPC Antenna, 1.59dBi(Max.)
WIFI(2.4G Band)	:
Frequency Range	: 2412MHz~2462MHz
Channel Number	: 11 Channels for 20MHz bandwidth (2412~2462MHz)
Channel Spacing	: 5MHz
Modulation Type	: IEEE 802.11b: DSSS (CCK, DQPSK, DBPSK) IEEE 802.11g: OFDM (64QAM, 16QAM, QPSK, BPSK) IEEE 802.11n: OFDM (64QAM, 16QAM, QPSK, BPSK)
Antenna Description	: FPC Antenna, 1.59dBi(Max.)
2G	:
Support Band	: <input checked="" type="checkbox"/> GSM 900 (EU-Band) <input checked="" type="checkbox"/> DCS 1800 (EU-Band) <input checked="" type="checkbox"/> GSM 850 (U.S.-Band) <input checked="" type="checkbox"/> PCS 1900 (U.S.-Band)
Release Version	: R99
GPRS Class	: Class 12
EGPRS Class	: Class 12
Type Of Modulation	: GMSK for GSM/GPRS; GMSK/8PSK for EGPRS
Antenna Description	: FPC Antenna -0.67dBi (max.) For GSM 850 1.84dBi (max.) For PCS 1900
3G	:





Support Band : WCDMA Band II (U.S.-Band)
 WCDMA Band V (U.S.-Band)
 WCDMA Band IV (U.S.-Band)
 WCDMA Band I (EU-Band)
 WCDMA Band VIII (EU-Band)

Release Version : R6

Type Of Modulation : QPSK, 16QAM

Antenna Description : FPC Antenna
1.84dBi (max.) For WCDMA Band II
-0.67dBi (max.) For WCDMA Band V

LTE :

Support Band : E-UTRA Band 2(U.S.-Band)
 E-UTRA Band 4(U.S.-Band)
 E-UTRA Band 5(U.S.-Band)
 E-UTRA Band 7(U.S.-Band)
 E-UTRA Band 38(U.S.-Band)
 E-UTRA Band 41(U.S.-Band)

LTE Release Version : R9

Type Of Modulation : QPSK/16QAM

Antenna Description : FPC Antenna
1.84dBi (max.) For E-UTRA Band 2
1.66dBi (max.) For E-UTRA Band 4
-0.67dBi (max.) For E-UTRA Band 5
1.82dBi (max.) For E-UTRA Band 7
1.91dBi (max.) For E-UTRA Band 38
1.91dBi (max.) For E-UTRA Band 41

Power Class : Class 3

NFC :

Operating Frequency : 13.56MHz

Modulation Type : ASK

Antenna Description : Coil Antenna, 0.5dBi(Max.)

GPS function : Support and only RX

Extreme temp. Tolerance : -30°C to +50°C

Extreme vol. Limits : 21.6VDC to 26.4VDC (nominal: 24VDC)





1.2 Host System Configuration List and Details

Manufacturer	Description	Model	Serial Number	Certificate
ShenZhen DeLippo Technology Co., Ltd	AC ADAPTER	B06240300	---	FCC

1.3 External I/O

I/O Port Description	Quantity	Cable
USB Port	1	N/A
LAN Port	1	N/A
PowerPort	1	N/A

1.4 Description of Test Facility

- NVLAP Accreditation Code is 600167-0.
- FCC Designation Number is CN5024.
- CAB identifier is CN0071.
- CNAS Registration Number is L4595.
- Test Firm Registration Number: 254912.

The 3m-Semi anechoic test site fulfils CISPR 16-1-4 according to ANSI C63.4:2014 and CISPR 16-1-4:2010 SVSWR requirement for radiated emission above 1GHz.





1.5 Statement of The Measurement Uncertainty

The data and results referenced in this document are true and accurate. The reader is cautioned that there may be errors within the calibration limits of the equipment and facilities. The measurement uncertainty was calculated for all measurements listed in this test report acc. To CISPR 16 – 4 “Specification for radio disturbance and immunity measuring apparatus and methods – Part 4: Uncertainty in EMC Measurements” and is documented in the LCS quality system acc. to DIN EN ISO/IEC 17025. Furthermore, component and process variability of devices similar to that tested may result in additional deviation. The manufacturer has the sole responsibility of continued compliance of the device.

1.6 Measurement Uncertainty

Test Item	Frequency Range	Uncertainty	Note
Radiation Uncertainty	9KHz~30MHz	±3.10dB	(1)
	30MHz~200MHz	±2.96dB	(1)
	200MHz~1000MHz	±3.10dB	(1)
	1GHz~26.5GHz	±3.80dB	(1)
	26.5GHz~40GHz	±3.90dB	(1)
Conduction Uncertainty	150kHz~30MHz	±1.63dB	(1)
Power disturbance	30MHz~300MHz	±1.60dB	(1)

(1) This uncertainty represents an expanded uncertainty expressed at approximately the 95% confidence level using a coverage factor of k=2.

1.7 Description of Test Modes

The EUT has been tested under operating condition.

This test was performed with EUT in X, Y, Z position and the worst case was found when EUT in Y position.

AC conducted emission pre-test at both at AC 120V/60Hz and AC 240V/50Hz modes, recorded worst case.

Worst-case mode and channel used for 150 KHz-30 MHz power line conducted emissions was the mode and channel with the highest output power.

Worst-case mode and channel used for 9 KHz-1000 MHz radiated emissions was the mode and channel with the highest output power.

All adapters were tested and we only record the worst case which model is AD65CM240250A.





2. TEST METHODOLOGY

All measurements contained in this report were conducted with ANSI C63.10-2013, American National Standard of Procedures for Compliance Testing of Unlicensed Wireless Devices.

The radiated testing was performed at an antenna-to-EUT distance of 3 meters. All radiated and conducted emissions measurement was performed at Shenzhen LCS Compliance Testing Laboratory Ltd.

2.1. EUT Configuration

The EUT configuration for testing is installed on RF field strength measurement to meet the Commissions requirement and operating in a manner that intends to maximize its emission characteristics in a continuous normal application.

2.2. EUT Exercise

The EUT was operated in the engineering mode to fix the TX frequency that was for the purpose of the measurements.

According to its specifications, the EUT must comply with the requirements of the Section 15.225 under the FCC Rules Part 15 Subpart C.

2.3 General Test Procedures

2.3.1 Conducted Emissions

The EUT is placed on the turntable, which is 0.8 m above ground plane. According to the requirements in Section 6.2.1 of ANSI C63.10-2013 Conducted emissions from the EUT measured in the frequency range between 0.15 MHz and 30MHz using Quasi-peak and average detector modes.

2.3.2 Radiated Emissions

The EUT is placed on a turn table, which is 0.8 m above ground plane below 1GHz and 1.5 m above ground plane above 1GHz. The turntable shall rotate 360 degrees to determine the position of maximum emission level. EUT is set 3m away from the receiving antenna, which varied from 1m to 4m to find out the highest emission. And also, each emission was to be maximized by changing the polarization of receiving antenna both horizontal and vertical. In order to find out the maximum emissions, exploratory radiated emission measurements were made according to the requirements in Section 6.3 of ANSI C63.10-2013.





3. SYSTEM TEST CONFIGURATION

3.1. Justification

The system was configured for testing in a continuous transmits condition.

3.2. EUT Exercise Software

The system was configured for testing in a continuous transmits condition and change test channels by software provided by applicant.

3.3. Special Accessories

No.	Equipment	Manufacturer	Model No.	Serial No.	Length	shielded/ unshielded	Notes
/	/	/	/	/	/	/	/

3.4. Block Diagram/Schematics

Please refer to the related document

3.5. Equipment Modifications

Shenzhen LCS Compliance Testing Laboratory Ltd. has not done any modification on the EUT.

3.6. Test Setup

Please refer to the test setup photo.





4. SUMMARY OF TEST RESULTS

Applied Standard: FCC Part 15 Subpart C		
Test Items	FCC Rules	Result
Line Conducted Emissions	§15.207(a)	PASS
Field Strength of Fundamental Emissions	§15.225(a)(b)(c)	PASS
Radiated Emissions	§15.225(d) & §15.209	PASS
20dB Bandwidth	§ 15.215	PASS
Frequency Stability	§15.225(e)	PASS
Antenna Requirement	§15.203	PASS





5. RADIATED MEASUREMENT

5.1. Radiated Emission

5.1.1. Standard Applicable

According to §15.209/ §15.205

15.205 (a) Except as shown in paragraph (d) of this section, only spurious emissions are permitted in any of the frequency bands listed below:

MHz	MHz	MHz	GHz
0.090-0.110	16.42-16.423	399.9-410	4.5-5.15
\1\ 0.495-0.505	16.69475-16.69525	608-614	5.35-5.46
2.1735-2.1905	16.80425-16.80475	960-1240	7.25-7.75
4.125-4.128	25.5-25.67	1300-1427	8.025-8.5
4.17725-4.17775	37.5-38.25	1435-1626.5	9.0-9.2
4.20725-4.20775	73-74.6	1645.5-1646.5	9.3-9.5
6.215-6.218	74.8-75.2	1660-1710	10.6-12.7
6.26775-6.26825	108-121.94	1718.8-1722.2	13.25-13.4
6.31175-6.31225	123-138	2200-2300	14.47-14.5
8.291-8.294	149.9-150.05	2310-2390	15.35-16.2
8.362-8.366	156.52475-156.52525	2483.5-2500	17.7-21.4
8.37625-8.38675	156.7-156.9	2690-2900	22.01-23.12
8.41425-8.41475	162.0125-167.17	3260-3267	23.6-24.0
12.29-12.293	167.72-173.2	3332-3339	31.2-31.8
12.51975-12.52025	240-285	3345.8-3358	36.43-36.5
12.57675-12.57725	322-335.4	3600-4400	(\2\)
13.36-13.41			

\1\ Until February 1, 1999, this restricted band shall be 0.490-0.510 MHz.

\2\ Above 38.6

According to §15.247 (d): 20dBc in any 100 kHz bandwidth outside the operating frequency band. In case the emission fall within the restricted band specified on 15.205(a), then the 15.209(a) limit in the table below has to be followed.

Frequencies (MHz)	Field Strength (microvolts/meter)	Measurement Distance (meters)
0.009~0.490	2400/F(KHz)	300
0.490~1.705	24000/F(KHz)	30
1.705~30.0	30	30
30~88	100	3
88~216	150	3
216~960	200	3
Above 960	500	3

5.1.2. Measuring Instruments and Setting

Please refer to equipment list in this report. The following table is the setting of spectrum analyzer and receiver.

Spectrum Parameter	Setting
Attenuation	Auto
Start Frequency	1000 MHz
Stop Frequency	10 th carrier harmonic
RB / VB (Emission in restricted band)	1MHz / 1MHz for Peak, 1 MHz / 1/B kHz for Average
RB / VB (Emission in non-restricted band)	1MHz / 1MHz for Peak, 1 MHz / 1/B kHz for Average



Shenzhen LCS Compliance Testing Laboratory Ltd.

Add: 101, 201 Bldg A & 301 Bldg C, Juji Industrial Park Yabianxueziwei, Shajing Street, Baoan District, Shenzhen, 518000, China

Tel: +(86) 0755-82591330 | E-mail: webmaster@lcs-cert.com | Web: www.lcs-cert.com

Scan code to check authenticity



Receiver Parameter	Setting
Attenuation	Auto
Start ~ Stop Frequency	9kHz~150kHz / RB/VB 200Hz/1KHz for QP/AVG
Start ~ Stop Frequency	150kHz~30MHz / RB/VB 9kHz/30KHz for QP/AVG
Start ~ Stop Frequency	30MHz~1000MHz / RB/VB 120kHz/1MHz for QP

5.1.3. Test Procedures

1) Sequence of testing 9 kHz to 30 MHz

Setup:

- The equipment was set up to simulate a typical usage like described in the user manual or described by manufacturer.
- If the EUT is a tabletop system, a rotatable table with 0.8 m height is used.
- If the EUT is a floor standing device, it is placed on the ground.
- Auxiliary equipment and cables were positioned to simulate normal operation conditions.
- The AC power port of the EUT (if available) is connected to a power outlet below the turntable.
- The measurement distance is 3 meter.
- The EUT was set into operation.

Premeasurement:

- The turntable rotates from 0° to 315° using 45° steps.
- The antenna height is 1.0 meter.
- At each turntable position the analyzer sweeps with peak detection to find the maximum of all emissions

Final measurement:

- Identified emissions during the premeasurement the software maximizes by rotating the turntable position (0° to 360°) and by rotating the elevation axes (0° to 360°).
- The final measurement will be done in the position (turntable and elevation) causing the highest emissions with QPK detector.
- The final levels, frequency, measuring time, bandwidth, turntable position, correction factor, margin to the limit and limit will be recorded. Also a plot with the graph of the premeasurement and the limit will be stored.





2) Sequence of testing 30 MHz to 1 GHz

Setup:

- The equipment was set up to simulate a typical usage like described in the user manual or described by manufacturer.
- If the EUT is a tabletop system, a table with 0.8 m height is used, which is placed on the ground plane.
- If the EUT is a floor standing device, it is placed on the ground plane with insulation between both.
- Auxiliary equipment and cables were positioned to simulate normal operation conditions
- The AC power port of the EUT (if available) is connected to a power outlet below the turntable.
- The measurement distance is 3 meter.
- The EUT was set into operation.

Premeasurement:

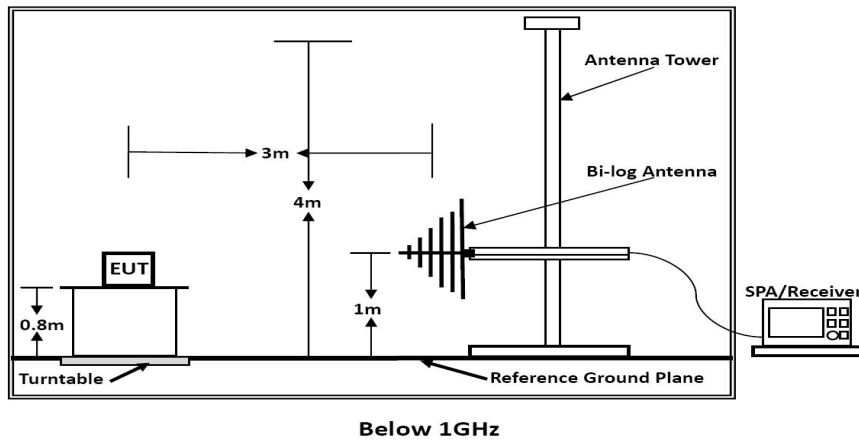
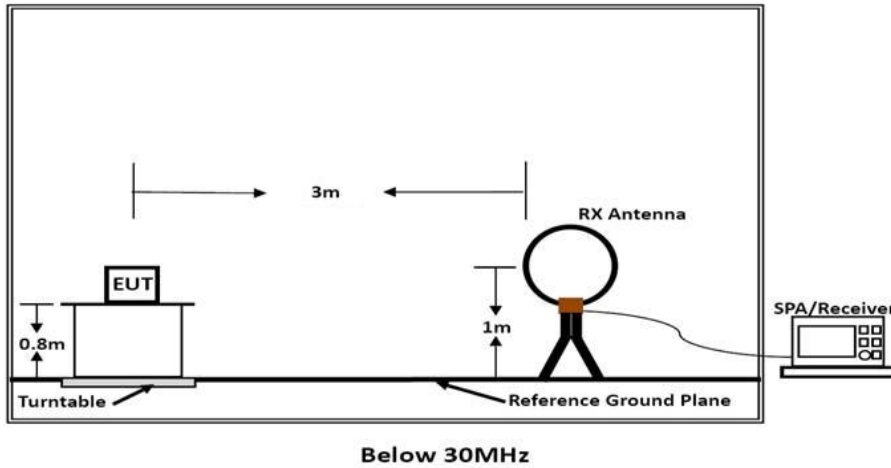
- The turntable rotates from 0° to 315° using 45° steps.
- The antenna is polarized vertical and horizontal.
- The antenna height changes from 1 to 3 meter.
- At each turntable position, antenna polarization and height the analyzer sweeps three times in peak to find the maximum of all emissions.

Final measurement:

- The final measurement will be performed with minimum the six highest peaks.
- According to the maximum antenna and turntable positions of premeasurement the software maximize the peaks by changing turntable position ($\pm 45^\circ$) and antenna movement between 1 and 4 meter.
- The final measurement will be done with QP detector with an EMI receiver.
- The final levels, frequency, measuring time, bandwidth, antenna height, antenna polarization, turntable angle, correction factor, margin to the limit and limit will be recorded. Also a plot with the graph of the premeasurement with marked maximum final measurements and the limit will be stored.



5.1.4. Test Setup Layout





5.1.5. Test Results

Temperature	23.9°C	Humidity	52.1%
Test Engineer	Ling Zhu	Configurations	NFC

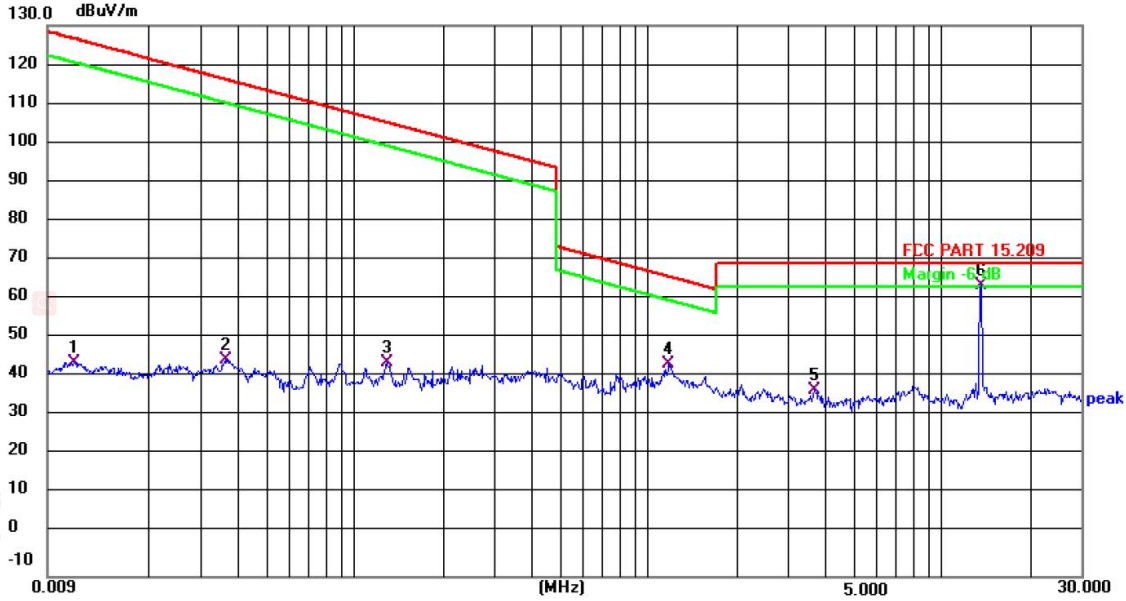
PASS.

The test data please refer to following page:

9 KHz~30MHz

Note: Only recorded the worst test result.

X axis



No.	Frequency (MHz)	Reading (dBuV)	Factor (dB/m)	Level (dBuV/m)	Limit (dBuV/m)	Margin (dB)	Detector
1	0.0111	53.64	-9.19	44.45	126.51	-82.06	AV
2	0.0362	54.62	-9.37	45.25	116.30	-71.05	AV
3	0.1287	53.99	-9.49	44.50	105.35	-60.85	AV
4	1.1789	50.84	-6.92	43.92	66.17	-22.25	QP
5	3.7000	46.79	-9.45	37.34	69.54	-32.20	QP
6	13.6584	73.90	-10.02	63.88	124.0	-60.12	QP

Remark:

- 1). X axis / Y axis/ Z axis were tested,report only recorded the worst result of X axis..
- 2). Margin=Reading level + Factor- Limit

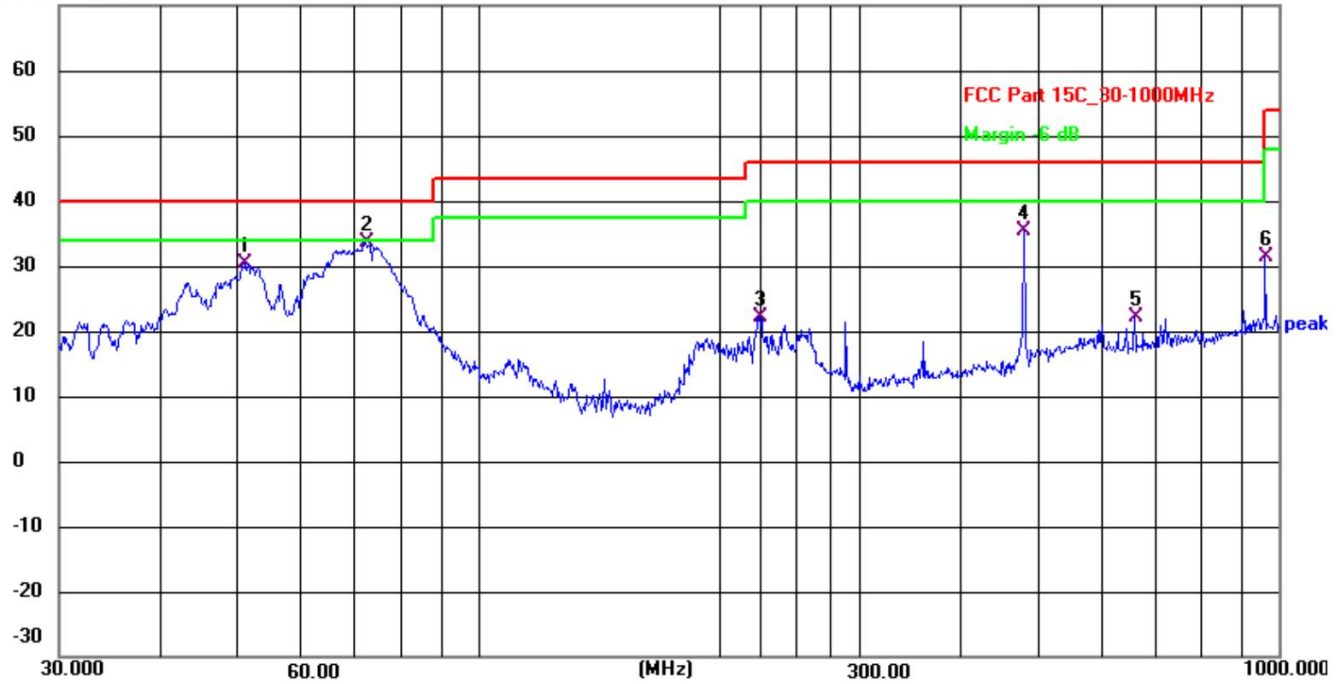




30MHz ~ 1GHz

Horizontal:

70.0 dBuV/m



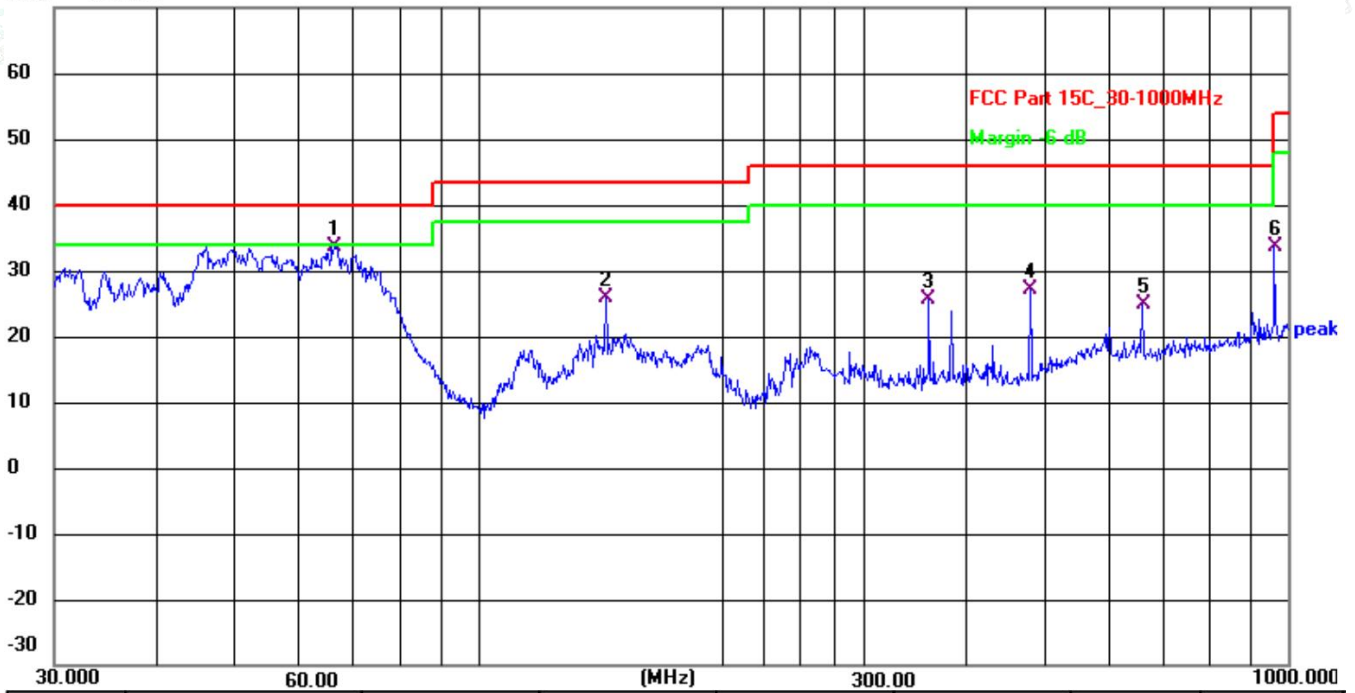
No.	Frequency (MHz)	Reading (dBuV)	Factor (dB/m)	Level (dBuV/m)	Limit (dBuV/m)	Margin (dB)	Detector
1	50.9420	47.68	-17.21	30.47	40.00	-9.53	QP
2	72.3376	53.07	-19.56	33.51	40.00	-6.49	QP
3	224.5193	38.97	-16.76	22.21	46.00	-23.79	QP
4	480.5276	49.47	-14.18	35.29	46.00	-10.71	QP
5	661.1505	33.17	-11.05	22.12	46.00	-23.88	QP
6	962.1623	38.99	-7.70	31.29	54.00	-22.71	QP





Vertical:

70.0 dBuV/m



No.	Frequency (MHz)	Reading (dBuV)	Factor (dB/m)	Level (dBuV/m)	Limit (dBuV/m)	Margin (dB)	Detector
1	66.4989	52.85	-19.25	33.60	40.00	-6.40	QP
2	143.8295	46.45	-20.49	25.96	43.50	-17.54	QP
3	360.4476	40.42	-14.81	25.61	46.00	-20.39	QP
4	480.5276	41.26	-14.18	27.08	46.00	-18.92	QP
5	661.1505	35.83	-11.05	24.78	46.00	-21.22	QP
6	962.1623	41.53	-7.97	33.56	54.00	-20.44	QP

Note:

Pre-scan all modes and recorded the worst case results in this report.

Emission level (dBuV/m) = 20 log Emission level (uV/m).

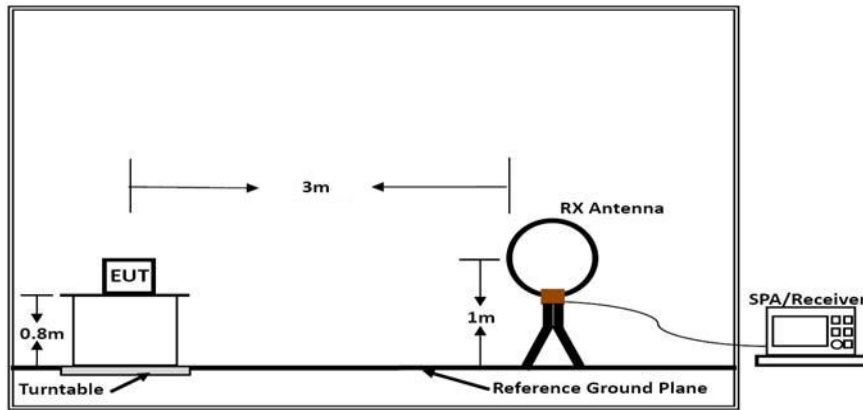
Corrected Reading: Factor + Read Level = Level.

Margin=Level – Limit.

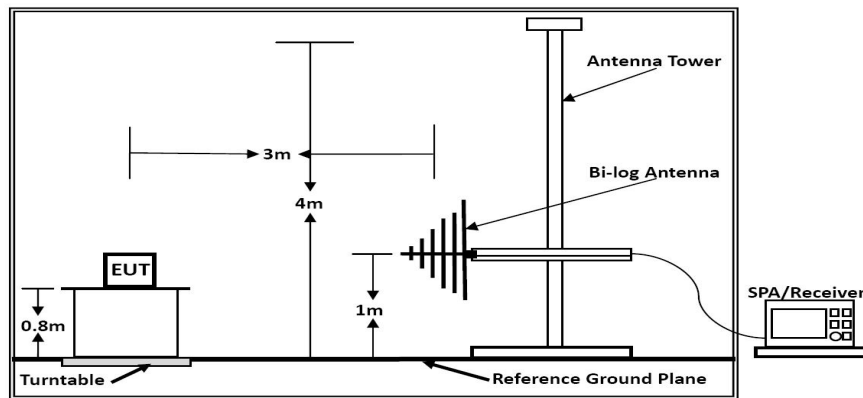


5.2. Field Strength of Fundamental Emissions and Mask Measurement

5.2.1. Block Diagram of Test Setup



Below 30MHz



Below 1GHz

5.2.2. Field strength of fundamental emissions limit and Mask limit

The field strength of fundamental emissions shall not exceed 15848 microvolts/meter at 30 meters. The emissions limit in this paragraph is based on measurement instrumentation employing a QP detector.

Frequencies (MHz)	Field Strength (microvolts/meter)	Field Strength (dBμV/m) at 10m	Field Strength (dBμV/m) at 3m
13.553 ~ 13.567MHz	15848 at 30m	103.08 (QP)	124 (QP)

Mask Limit:

Frequency (MHz)	Limit (dBuV/m)	Distance (m)
1.705-13.110	69.5	3
13.110-13.410	80.5	3
13.410-13.553	90.5	3
13.553-13.567	124.0	3
13.567-13.710	90.5	3
13.710-14.010	80.5	3
14.010-30.000	69.5	3





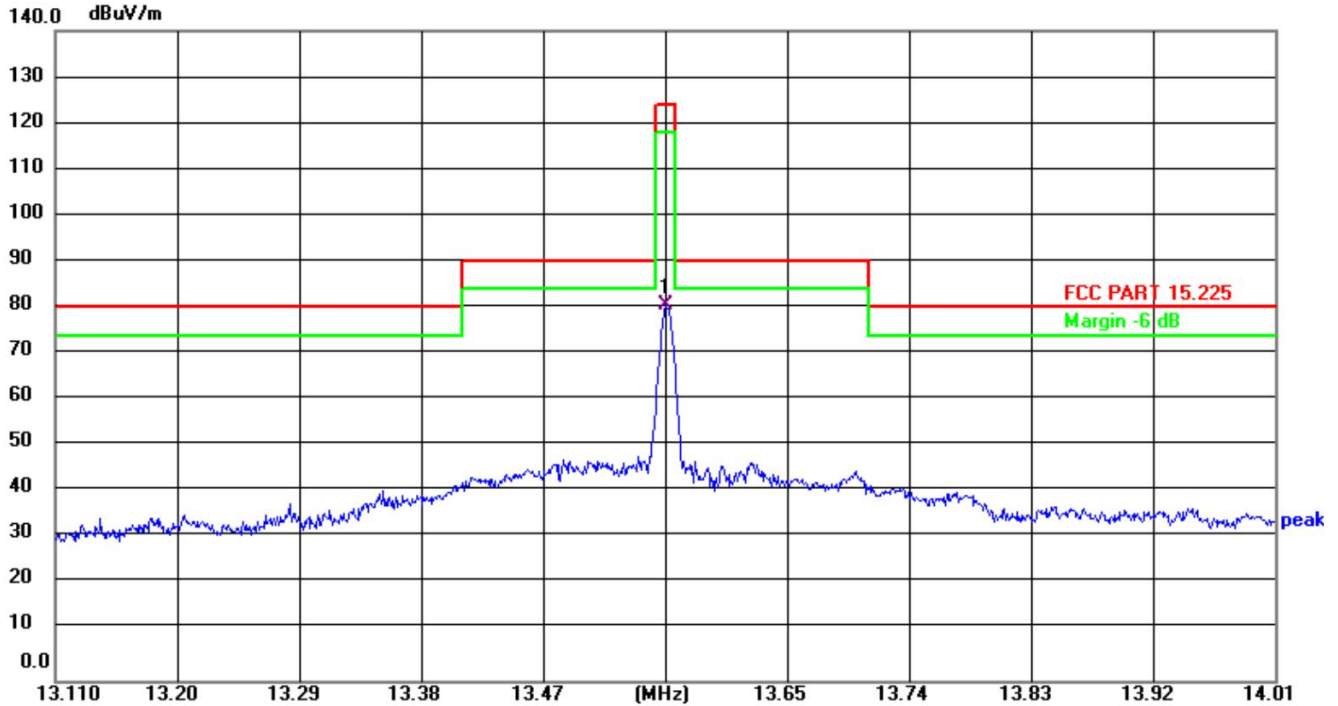
5.2.3. Test Results

Temperature	23.7°C	Humidity	52.6%
Test Engineer	Ling Zhu	Configurations	NFC

PASS.

The test data please refer to following page:

X axis



No.	Frequency (MHz)	Reading (dBuV)	Factor (dB/m)	Level (dBuV/m)	Limit (dBuV/m)	Margin (dB)	Detector
1	13.5600	91.05	-10.01	81.04	124.00	-42.96	QP

*Note: Factor= Antenna Factor + Cable Loss

Measured= Reading + Factor, Margin= Measured - Limit

Emission level (dBμV/m) = 20 log Emission level (μV/m).

Measured distance is 3m.

All emissions emit from non-NFC function of digital unintentional emissions. All NFC's spurious emissions are below 20dB of limits.

X axis / Y axis/ Z axis were tested,report only recorded the worst result of X axis.





6. BANDWIDTH OF THE OPERATING FREQUENCY

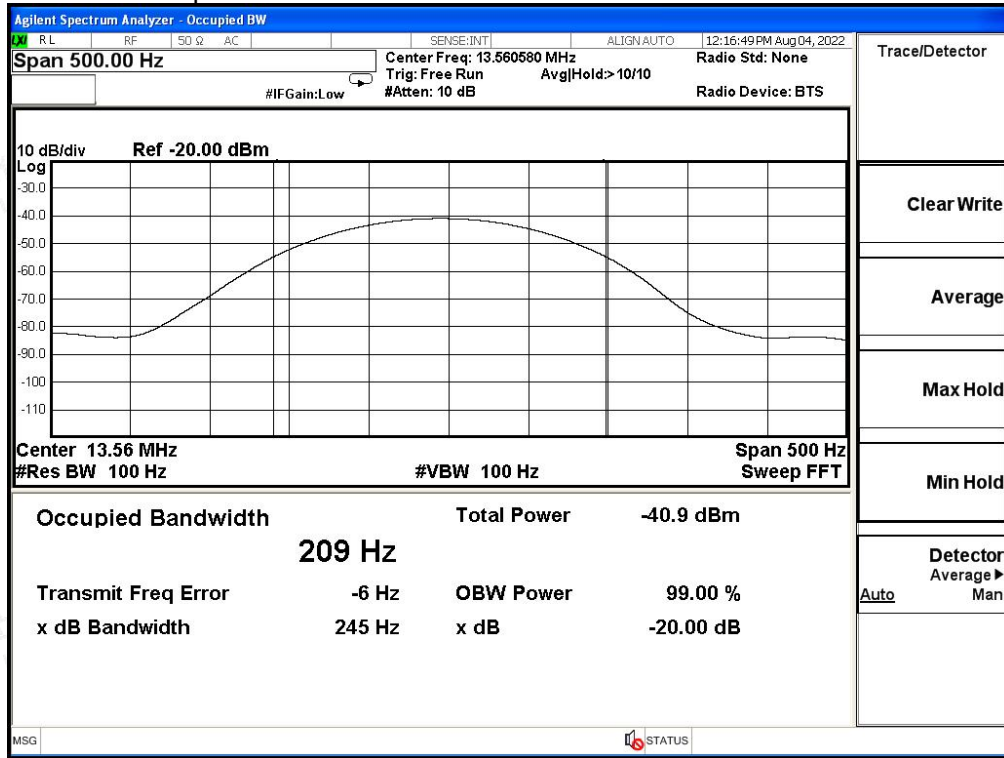
6.1. Standard Applicable

Intentional radiators must be designed to ensure that the 20 dB bandwidth of the emissions in the specific band (13.553 ~ 13.567MHz).

6.2. Test Result

EUT	Smart POS
RBW	100Hz
VBW	100Hz
SPAN	500Hz
Carrier Frequency (MHz)	20dB Bandwidth (KHz)
13.56	0.245

Please refer to the test plot:





7. FREQUENCY STABILITY MEASUREMENT

7.1 Standard Applicable

The frequency tolerance of the carrier signal shall be maintained within +/- 0.01% (100ppm) of the operating frequency over a temperature variation of -20 degrees to +50 degrees C at normal supply voltage, and for a variation in the primary supply voltage from 85% to 115% of the rated supply voltage at a temperature of 20 degrees C. For battery operated equipment, the equipment tests shall be performed using a full charged battery.

7.2 Test Result

Voltage vs. Frequency Stability

Voltage(V)	Measurement Frequency (MHz)	Deviation (KHz)	Deviation (ppm)	Limit (ppm)
VN	13.56041	0.41	30.23	100
VL	13.56040	0.40	29.46	100
VH	13.56035	0.35	25.64	100

Temperature vs. Frequency Stability

Temperature (°C)	Measurement Frequency (MHz)	Deviation (KHz)	Deviation (ppm)	Limit (ppm)
-20	13.56031	0.31	23.18	100
-10	13.56033	0.33	24.11	100
0	13.56023	0.23	17.02	100
10	13.56035	0.35	25.45	100
20	13.56041	0.41	30.33	100
30	13.56029	0.29	21.46	100
40	13.56036	0.36	26.34	100
50	13.56027	0.27	19.62	100



8. LINE CONDUCTED EMISSIONS

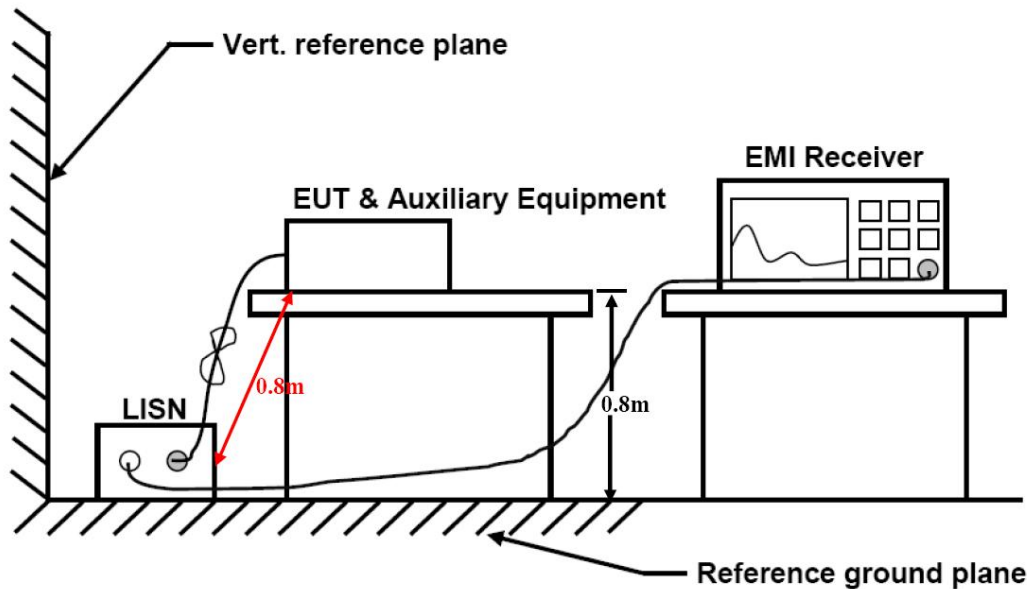
8.1. Standard Applicable

According to §15.207(a): For an intentional radiator which is designed to be connected to the public utility (AC) power line, the radio frequency voltage that is conducted back onto the AC power line on any frequency or frequencies within the band 150 kHz to 30 MHz shall not exceed 250 microvolts (The limit decreases linearly with the logarithm of the frequency in the range 0.15 MHz to 0.50 MHz). The limits at specific frequency range are listed as follows:

Frequency Range (MHz)	Limits (dBµV)	
	Quasi-peak	Average
0.15 to 0.50	66 to 56	56 to 46
0.50 to 5	56	46
5 to 30	60	50

* Decreasing linearly with the logarithm of the frequency

8.2. Block Diagram of Test Setup



8.3. Test Results

PASS.

Temperature	22.5°C	Humidity	53.7%
Test Engineer	Ling Zhu	Configurations	NFC

The test data please refer to following page.

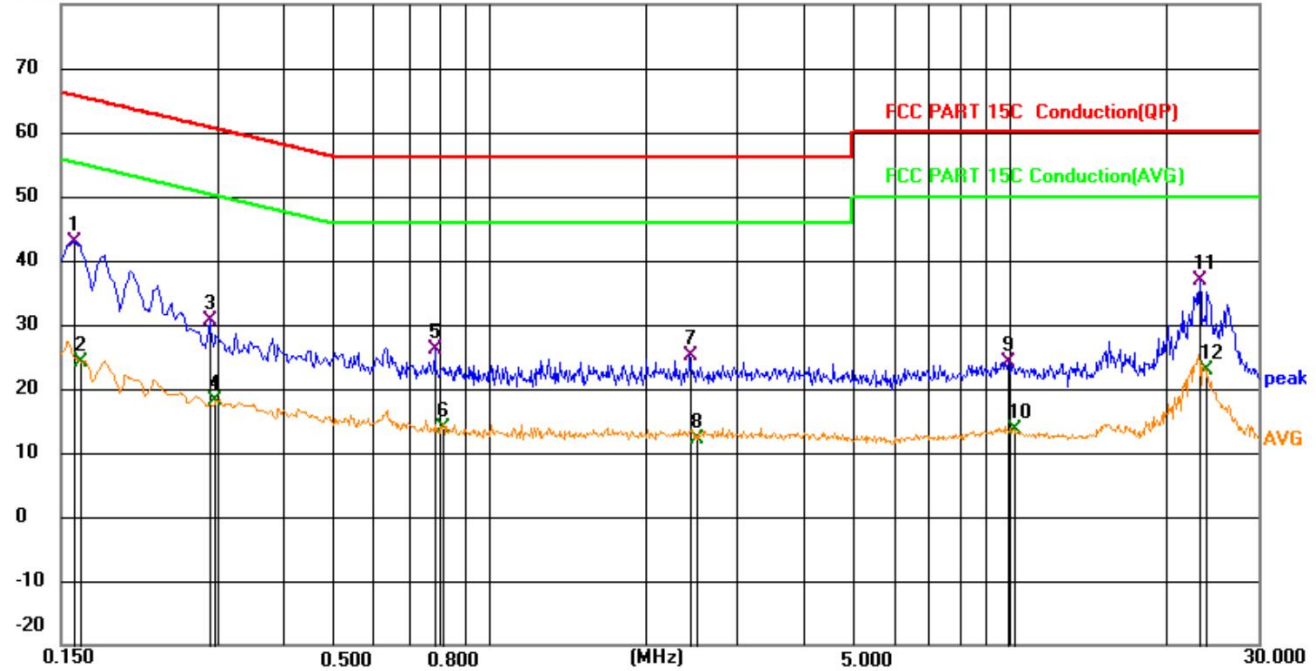




AC Conducted Emission @ AC 120V/60Hz (worst case)

Line

80.0 dBuV

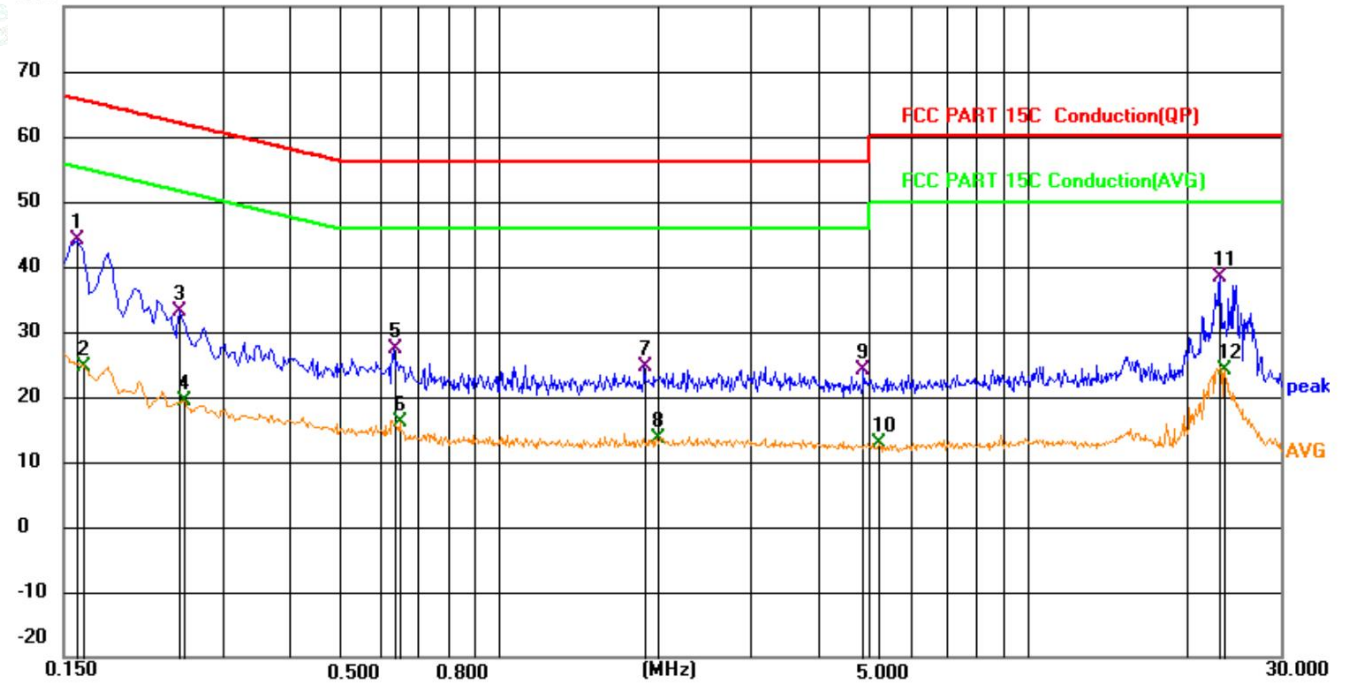


No.	Mk.	Freq. MHz	Reading Level dBuV	Correct Factor dB	Measure- ment dBuV	Limit dBuV	Margin dB	Detector	Comment
1	*	0.1590	23.34	19.63	42.97	65.52	-22.55	QP	
2		0.1641	4.58	19.63	24.21	55.25	-31.04	AVG	
3		0.2896	11.12	19.63	30.75	60.54	-29.79	QP	
4		0.2986	-1.61	19.63	18.02	50.28	-32.26	AVG	
5		0.7846	6.38	19.64	26.02	56.00	-29.98	QP	
6		0.8116	-5.87	19.64	13.77	46.00	-32.23	AVG	
7		2.4316	5.52	19.68	25.20	56.00	-30.80	QP	
8		2.5081	-7.47	19.68	12.21	46.00	-33.79	AVG	
9		9.9646	4.26	19.85	24.11	60.00	-35.89	QP	
10		10.2211	-6.34	19.85	13.51	50.00	-36.49	AVG	
11		23.2621	16.87	20.06	36.93	60.00	-23.07	QP	
12		23.8381	2.79	20.05	22.84	50.00	-27.16	AVG	





Neutral
80.0 dBuV



No.	Mk.	Freq. MHz	Reading Level dBuV	Correct Factor dB	Measure- ment dBuV	Limit dBuV	Margin dB	Detector	Comment
1	*	0.1590	24.42	19.63	44.05	65.52	-21.47	QP	
2		0.1641	5.07	19.63	24.70	55.25	-30.55	AVG	
3		0.2491	13.49	19.63	33.12	61.79	-28.67	QP	
4		0.2536	-0.16	19.63	19.47	51.64	-32.17	AVG	
5		0.6316	7.61	19.66	27.27	56.00	-28.73	QP	
6		0.6496	-3.56	19.65	16.09	46.00	-29.91	AVG	
7		1.8781	4.90	19.68	24.58	56.00	-31.42	QP	
8		1.9861	-6.13	19.68	13.55	46.00	-32.45	AVG	
9		4.8796	4.31	19.80	24.11	56.00	-31.89	QP	
10		5.2216	-6.85	19.80	12.95	50.00	-37.05	AVG	
11		23.1181	18.32	20.07	38.39	60.00	-21.61	QP	
12		23.5501	3.96	20.06	24.02	50.00	-25.98	AVG	

Measurement = Reading + Correct, Margin = Measurement - Limit.
 Correct Factor = Lisn Factor + Cable Factor



9. ANTENNA REQUIREMENTS

9.1 Standard Applicable

According to antenna requirement of §15.203.

An intentional radiator shall be designed to ensure that no antenna other than that furnished by the responsible party shall be used with the device. The use of a permanently attached antenna or of an antenna that uses a unique coupling to the intentional radiator shall be considered sufficient to comply with the provisions of this Section. The manufacturer may design the unit so that a broken antenna can be re-placed by the user, but the use of a standard antenna jack or electrical connector is prohibited. This requirement does not apply to carrier current devices or to devices operated under the provisions of Sections 15.211, 15.213, 15.217, 15.219, or 15.221. Further, this requirement does not apply to intentional radiators that must be professionally installed, such as perimeter protection systems and some field disturbance sensors, or to other intentional radiators which, in accordance with Section 15.31(d), must be measured at the installation site. However, the installer shall be responsible for ensuring that the proper antenna is employed so that the limits in this Part are not exceeded.

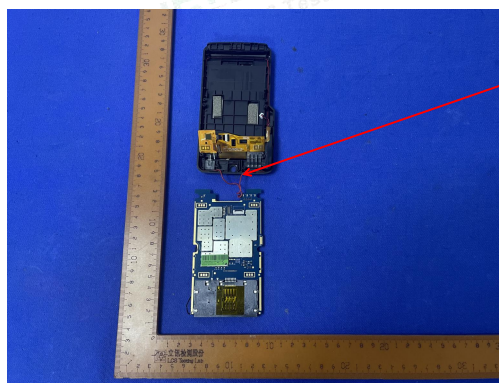
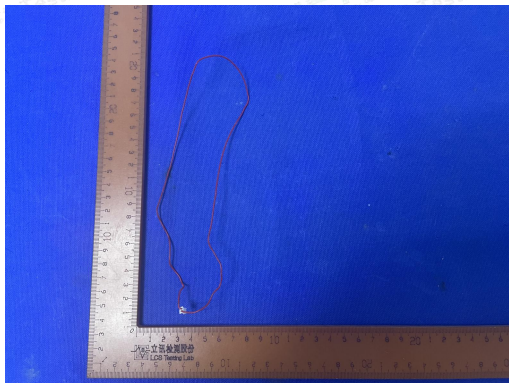
9.2 Antenna Connected Construction

9.2.1. Standard Applicable

According to § 15.203, an intentional radiator shall be designed to ensure that no antenna other than that furnished by the responsible party shall be used with the device.

9.2.2. Antenna Connector Construction

The gains of antenna used for transmitting is 0.5dBi, and the antenna is Coil Antenna connect to PCB board and no consideration of replacement. Please see the antenna photo for details.



Coil Antennac

9.2.3. Results: Compliance.



**10. LIST OF MEASURING EQUIPMENTS**

Item	Equipment	Manufacturer	Model No.	Serial No.	Cal Date	Due Date
1	Power Meter	R&S	NRVS	100444	2022-06-16	2023-06-15
2	Power Sensor	R&S	NRV-Z81	100458	2022-06-16	2023-06-15
3	Power Sensor	R&S	NRV-Z32	10057	2022-06-16	2023-06-15
4	Test Software	Tonscend	JS1120-2	/	N/A	N/A
5	RF Control Unit	Tonscend	JS0806-2	N/A	2021-11-16	2022-11-15
6	MXA Signal Analyzer	Agilent	N9020A	MY50510140	2021-11-16	2022-11-15
7	DC Power Supply	Agilent	E3642A	N/A	2021-11-15	2022-11-14
8	EMI Test Software	AUDIX	E3	/	N/A	N/A
9	3m Semi Anechoic Chamber	SIDT FRANKONIA	SAC-3M	03CH03-HY	2022-06-16	2023-06-15
10	Positioning Controller	Max-Full	MF7802BS	MF780208586	N/A	N/A
11	Active Loop Antenna	SCHWARZBECK	FMZB 1519B	00005	2021-08-29	2024-08-28
12	By-log Antenna	SCHWARZBECK	VULB9163	9163-470	2021-09-12	2024-09-11
13	Horn Antenna	SCHWARZBECK	BBHA 9120D	9120D-1925	2021-09-05	2024-09-04
14	Broadband Horn Antenna	SCHWARZBECK	BBHA 9170	791	2021-08-29	2024-08-28
15	Broadband Preamplifier	SCHWARZBECK	BBV9719	9719-025	2022-06-16	2023-06-15
16	EMI Test Receiver	R&S	ESR 7	101181	2022-06-16	2023-06-15
17	RS SPECTRUM ANALYZER	R&S	FSP40	100503	2021-11-16	2022-11-15
18	Broadband Preamplifier	/	BP-01M18G	P190501	2022-06-16	2023-06-15
19	6dB Attenuator	/	100W/6dB	1172040	2022-06-16	2023-06-15
20	3dB Attenuator	/	2N-3dB	/	2021-11-15	2022-11-14
21	EMI Test Receiver	R&S	ESPI	101940	2022-08-18	2023-08-19
22	Artificial Mains	R&S	ENV216	101288	2022-06-16	2023-06-15
23	10dB Attenuator	SCHWARZBECK	MTS-IMP-136	261115-001-0032	2022-06-16	2023-06-15
24	EMI Test Software	Farad	EZ	/	N/A	N/A





11. Test Setup Photographs of Eut

Please refer to separated files for Test Setup Photos of the EUT.

12. Exterior Photographs of the Eut

Please refer to separated files for Exterior Photos of the EUT.

13. Interior Photographs of the Eut

Please refer to separated files for Interior Photos of the EUT.

-----THE END OF REPORT-----

