

Notice for before using the product

Please read this manual carefully before use to ensure that your usage safe and correct.
This product can suffer interference from other electromagnetic emitting devices including bluetooth, wi-fi and other wireless connections systems. As such Soundbridge Co., Ltd. cannot guarantee that this product will be free from all interferences whilst using this product.

• FCC Caution :

Any changes or modifications(including the antenna) made to this device that are not expressly approved by the manufacturer may void the user's authority to operate the equipment.
This device complies with Part 15 of the FCC Rules. Operation is subject to the following two conditions:
(1)This device may not cause harmful interference. And
(2)This device must accept any interference received, including interference that may cause undesired operation.

• Trademark, Copyright and Registrations

The Soundbridge, Soundfit, Soundfit Alpha, Logos and all related marks and titles are registered under Soundbridge Co., Ltd. 2015.
Bluetooth SIG Inc, logos and all related marks and titles are registered under Bluetooth SIG Inc.

2

Information to the user

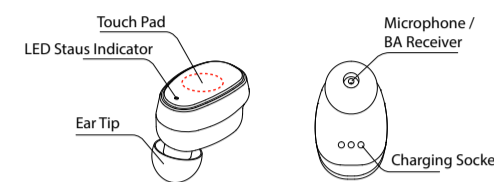
• Class B :

This equipment has been tested and found to comply with the limits for a Class B digital device, Pursuant to part 15 of the FCC Rules. These limits are designed to provide reasonable protection against harmful interference in a residential installation.
This equipment generates uses and can radiate radio frequency energy and, if not installed and used in accordance with the instructions, may cause harmful interference to radio communications. However, there is no guarantee that interference will not occur in a particular installation. If this equipment does cause harmful interference to radio or television reception, which can be determined by turning the equipment off and on, the user is encouraged to try to correct the interference by one or more of the following measures:
- Reorient or relocate the receiving antenna.
- Increase the separation between the equipment and receiver.
- Connect the equipment into an outlet on a circuit different from that to which the receiver is connected.
- Consult the dealer or an experienced radio/TV technician for help.

3

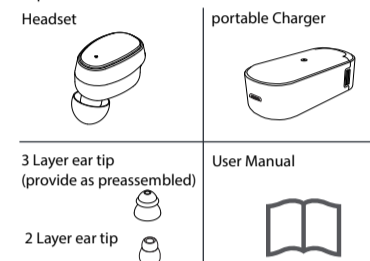
Product Overview

• Headset Features



• SoundFit including component

Please check that all components of this product are evident as shown below.
The product and some components may be different as shown in the pictures below.



4

Operation

• How to make calls on the Soundfit

Action	Control method
Receive Calls	Tap the touch pad to engage call
Hang up calls	Touch and hold for 3 seconds to hang up on call
To finish a call	At the conclusion of a call, the device will close the call automatically.

• How to use the Text-to-Speech system on the Soundfit device

The Soundfit device has a Text-to-Speech (TTS) system in order for you to conveniently hear text messages without you losing concentration on what you are doing.

To activate the Text-to-Speech system on your Soundfit device, go to your app home screen and touch the Text-to-Speech button on the bottom of the screen. The button will change from white to blue.
The Text-to-speech system is now activated.

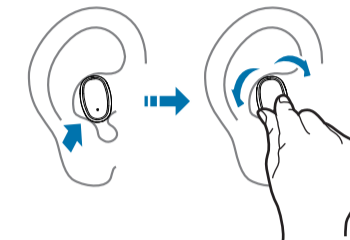


5

Operation

• Wearing instruction

Choose from the ear tips provided in the package that best fits your ear. Rotate the Headset to the direction of the arrow as shown in the diagram to attach the product closely to the conch (fossa navicularis) of your ear after you insert the Ear tip of the Headset up to your external auditory canal which will provide stability even when you are engaged in vigorous activities.
Wearing the headset correctly and that it is fastened properly at all times, ambient noise shall not seep through the ear tip, enabling crisp and clear call quality.



① You may experience howling if it is not worn properly and dislocation of the headset from the ear even while walking. We recommend you wear the Headset per instruction to block out external noise as well as product protection.

6

Operation

• SoundFit control method

- Turning on the headset**
After you wear the Headset, press the Touch Pad lightly for 3 seconds until you hear a voice message. The Headset will be in call ready standby mode.
- Answering/Declining calls**
If you receive a call during standby, press the Touch Pad lightly (half a second) to answer the call, press and hold for 2 seconds to decline the call. When the call is ended, it will automatically revert back to standby mode. Soundfit has vocal recognition software that enables users to discreetly answer or reject voice calls by a simple Yes/No command.
- Volume control**
You can control the volume either by using the customized Soundfit App or simply by using the volume keys on your phone.
- Power save function**
To save the battery power, it will turn off automatically after 3 min without pairing

7

• Usually 1 years warranty.

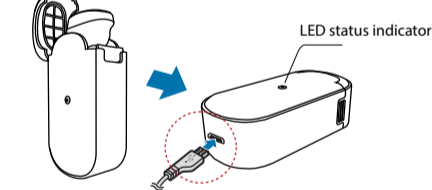
During the first year, we will replace the failed products and bear the freight if there are quality issues of our products. During the following 2 years, we will repair the device free of charge. The freight will be charged by clients. 5 years warranty is available too, while price will be a little bit higher.

soundbridge Co.,Ltd.
#810, IT Convergence Industrial Bldg.
47, Gyeongdae-ro 17-Gil, Buk-gu, Daegu, 702-832, South Korea

Operation

• How to charge your Soundfit Device

How to charge your Soundfit Device
When the LED indicator becomes RED, open your external battery and connect your head set to the socket to be recharged. The external battery has enough power to recharge your headset 3 times.



A when the LED is RED, it means you must recharge the device. If the LED is blue, then the device is fully charged and ready to go.

- If you have trouble with your Soundfit device, then you can connect it with your external battery for the program to be reset.
- When charging with the USB cable, please follow as shown on the diagram. Soundbridge will not cover your product under warranty if the charging unit was incorrectly connected by the user.
- Please do not use excessive force to connect the USB connection. Excessive force may cause damage and void warranty.

8

Operation

• How to recharge your headset

Before you use your headset, please charge it fully for the first time to ensure the maximum benefit of your new device. The Soundfit LED status indicator will indicate the battery level as shown below.

Charging Time	Approx. 1 hour
Status Indicator Color	Fully charged Red Battery low Blue

• Charging the Portable Charger

The Portable Charger can be used to not only charge but to RESET Soundfit. The LED Status Indicator on the Portable Charger will indicate the battery level as shown in the diagram.

Charging Time	Approx. 1 hour
Status Indicator Color	Charging headset Flashing blue light charging portable charger battery Red Fully charged Green

- Use the standard smartphone charger. Third Party chargers may damage or destroy the product. Warranty Service shall not cover product damage resulting from negligent or misuse by the customer
- When mobile charger is fully charged, you should disconnect the mini USB plug first after that you can pull out the main outlet plug.

9

Operation

• Bluetooth function

Bluetooth uses the electromagnetic frequency of the 2.4GHz range to connect with other bluetooth compatible devices for seamless wireless connection and to transfer large amounts of data quickly.

• Bluetooth functions

The Soundfit device provides three different settings in order to optimise the Soundfit device for efficient battery use. These functions can be changed to easily assist you in ease of communication and personal entertainment.

Profile	Phone Call	Call Rejection	Dialing by Voice	Music playback
Headset Profile	○	—	—	—
Hands Free Profile	○	○	○	—
Audio Transfer Profile	—	—	—	○

10

Operation

• Notice of Bluetooth connection

Bluetooth applications do suffer from interference from some environments. Read the information below to minimise the interference that you may suffer with your Soundfit device.

- All materials do absorb some of the transmission between bluetooth devices. Walls, ceilings, furniture, other electronics all have an ability to reduce the range or interfere with the bluetooth devices. Staying in clear line of sight or moving away from interfering electronics will help ensure that you have clear bluetooth coverage of your soundfit device.
- If the soundfit device is too far away from your phone or has too much interference, then the device will automatically disconnect with the your phone and will revert back to standby mode.
- If the device is starting to be out of range of your phone, then you will hear several tones to indicate to you that your going out of range of your phone.
- Bluetooth can suffer interference from other devices that also uses wireless electromagnetic communication systems which may include medical equipment, x-ray and scanning machines, industrial machinery and other scientific devices.
- Any bluetooth devices that are not part of the Special Interest Group may not be compatible with the Soundfit device.

11

Operation

• Phone Registration/Connecting to Bluetooth

If you connect Soundfit with your phone for the first time, registration of the product need to be completed. Once registered, it will automatically connect to the phone every time you turn on Soundfit. When you register or use Soundfit, the Headset and the Phone should ideally be kept in close proximity of each other.



• Steps for registration/connection by using the App.



You will be able to download the Soundfit App by typing "Soundfit" in the search page of Google Play Store.

• Connecting/Disconnecting Bluetooth

You can either turn off Soundfit directly or by the Bluetooth function to disconnect Soundfit from the phone.

12

Operation

• Headset Specification

Item	Specification
Bluetooth type	BDR / EDR
Bluetooth Profile	HFP / HSP / A2DP / SPP
Certification Number	MSIP-CRS-ba-SFaplus
Wireless range	Max. 10M
Battery life	Continues Call: Approximate 3 hours
	Continues music playback: Approx. 4 hours
	Standby: Approx. 60 hours
	When you recharge the Soundfit by using the mobile charger, you can make 12 hours call (based on 3 times recharging)

• Portable charger specification

Model name	SoundFit Portable charger
Battery	Lithium Polymer
Input power	DC 5V / 1A
Charging Capacity	450mAh / 3.6V

- Non authorised decomposition may affect your warranty service.

13

SF^α User's Manual



soundbridge[®]
Hands-Free Voice Notification(TTS) for SMS.
Cutting-edge Hearing Enhancement Technology.
Simply connect SF^α to your phone via Bluetooth(A2DP).
It's that simple.