



External Photos of the EUT

Model No.: RM-1700-22M3, RM-1700-22M, RM-1700-22M3-IN

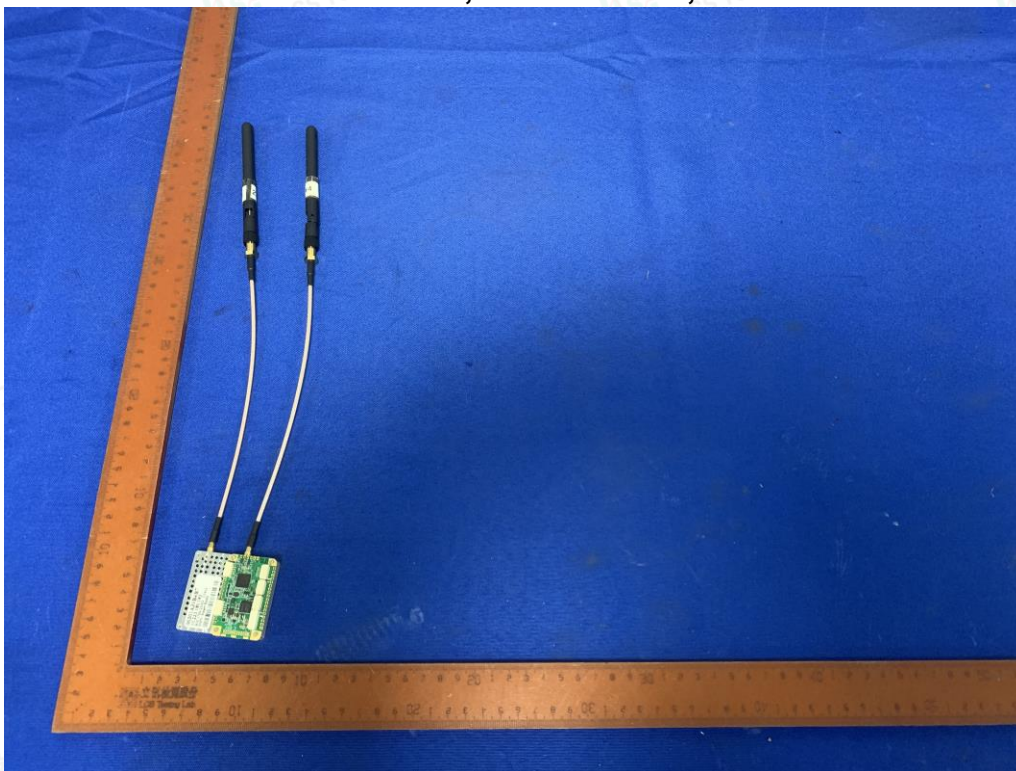


Fig. 1

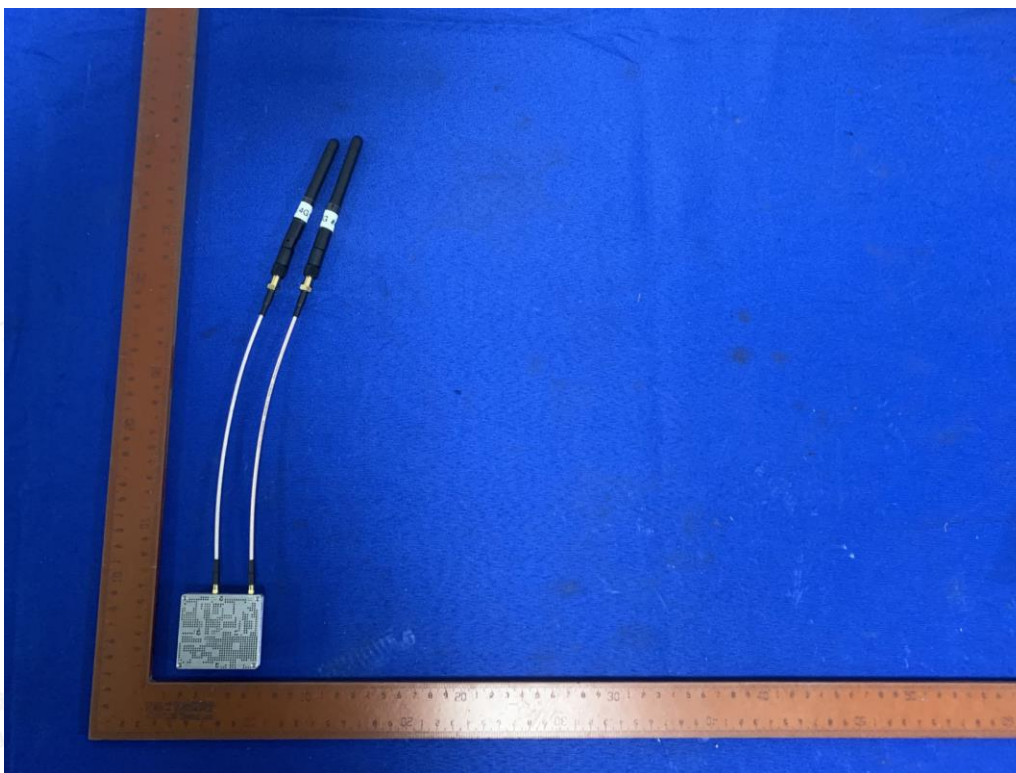


Fig. 2



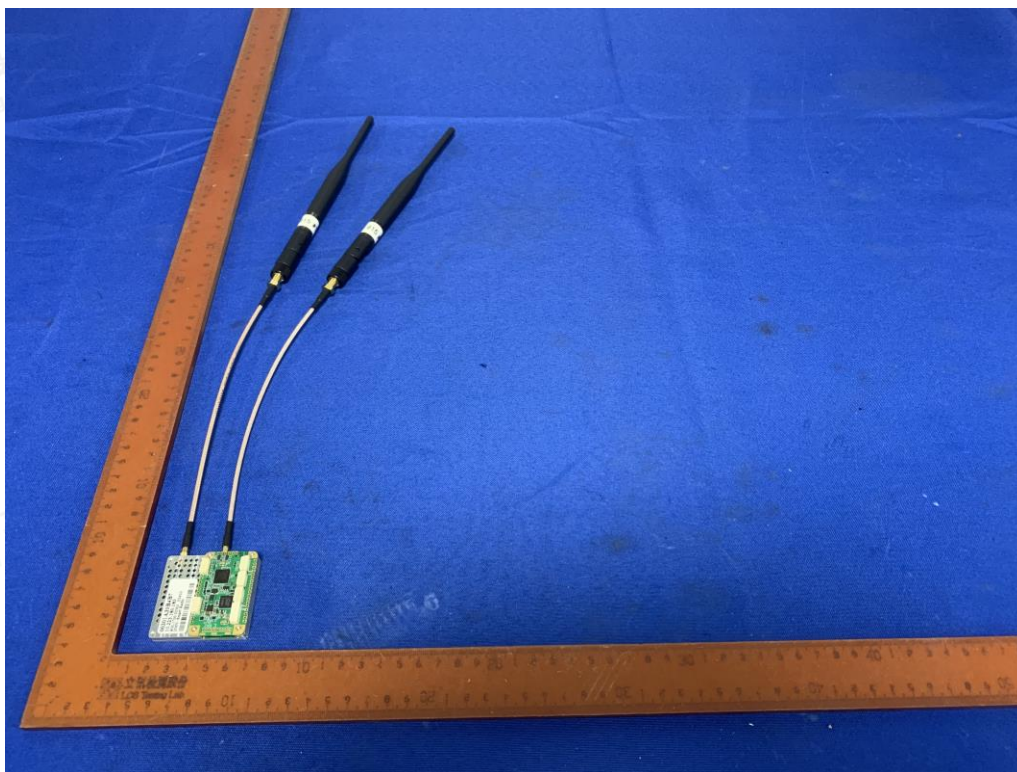


Fig. 3

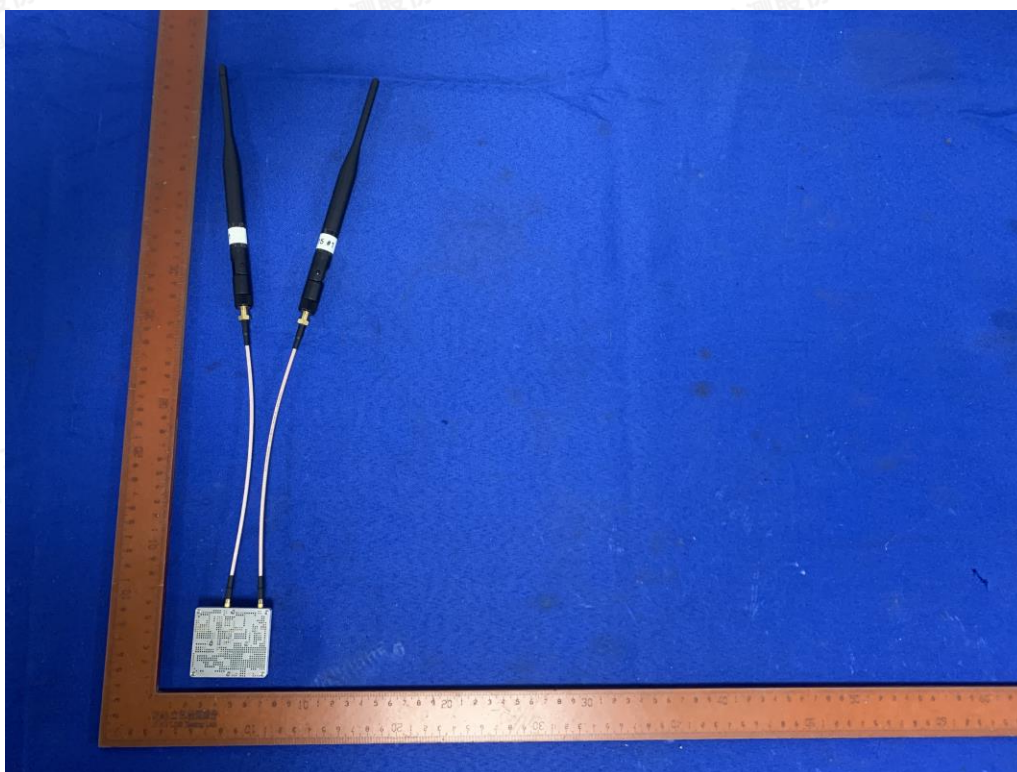


Fig. 4



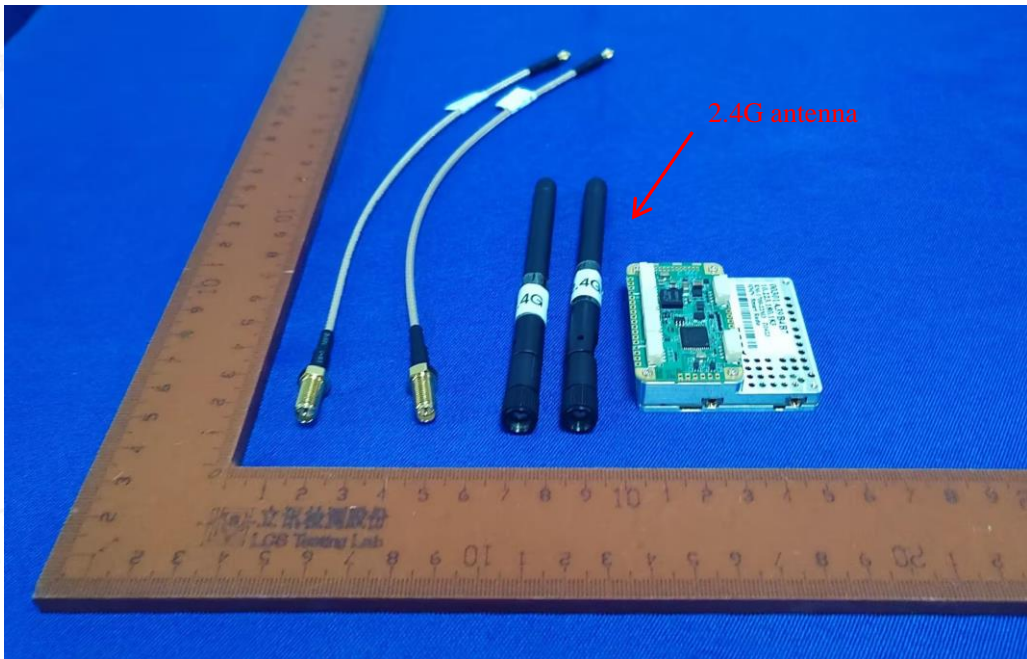


Fig. 5

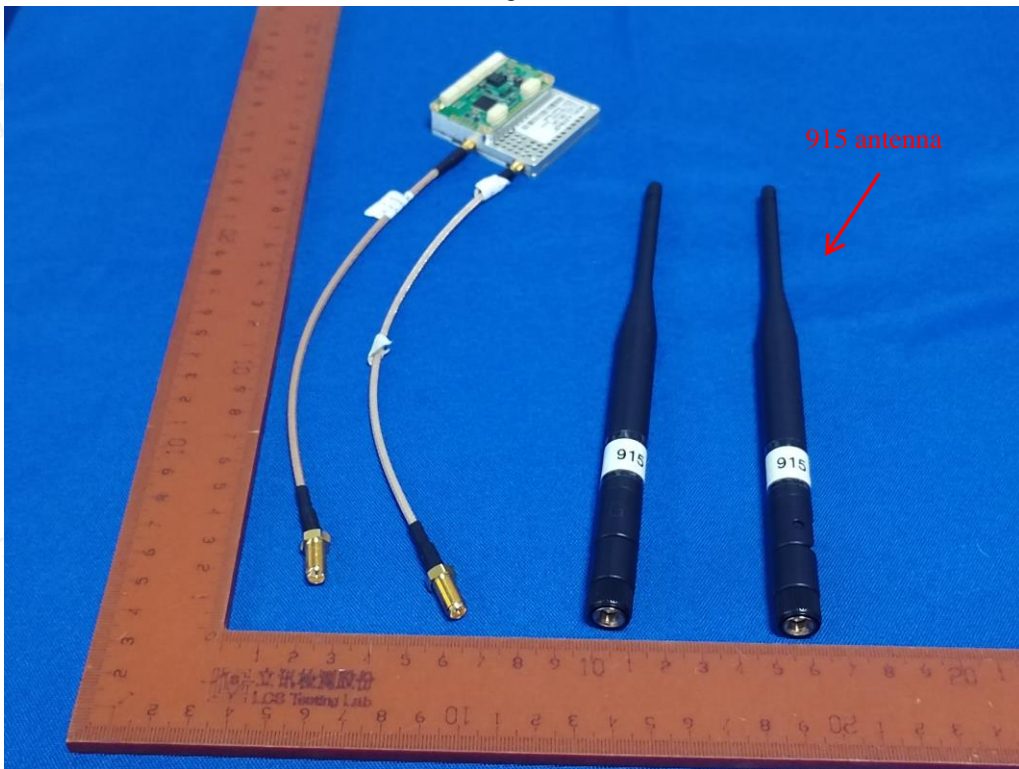


Fig. 6



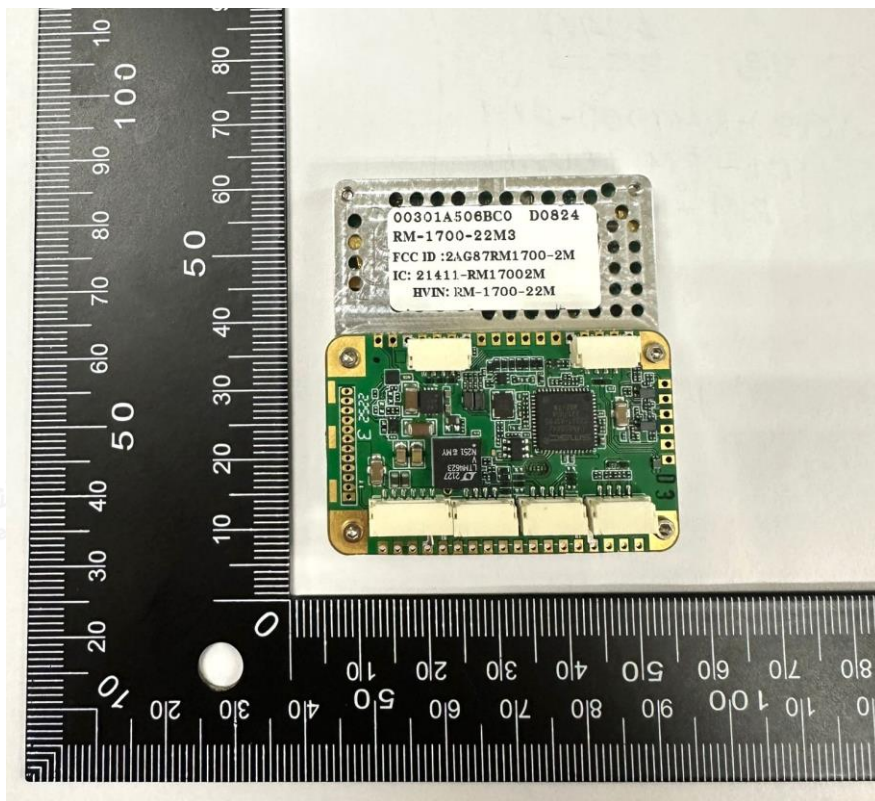


Fig. 7

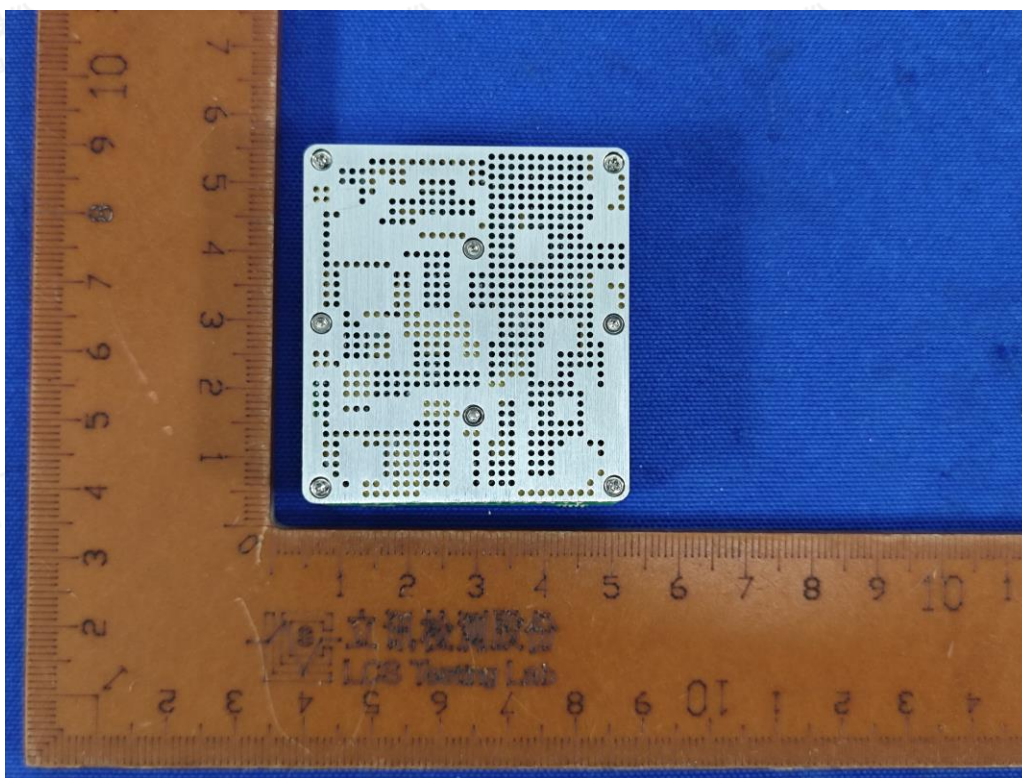


Fig. 8



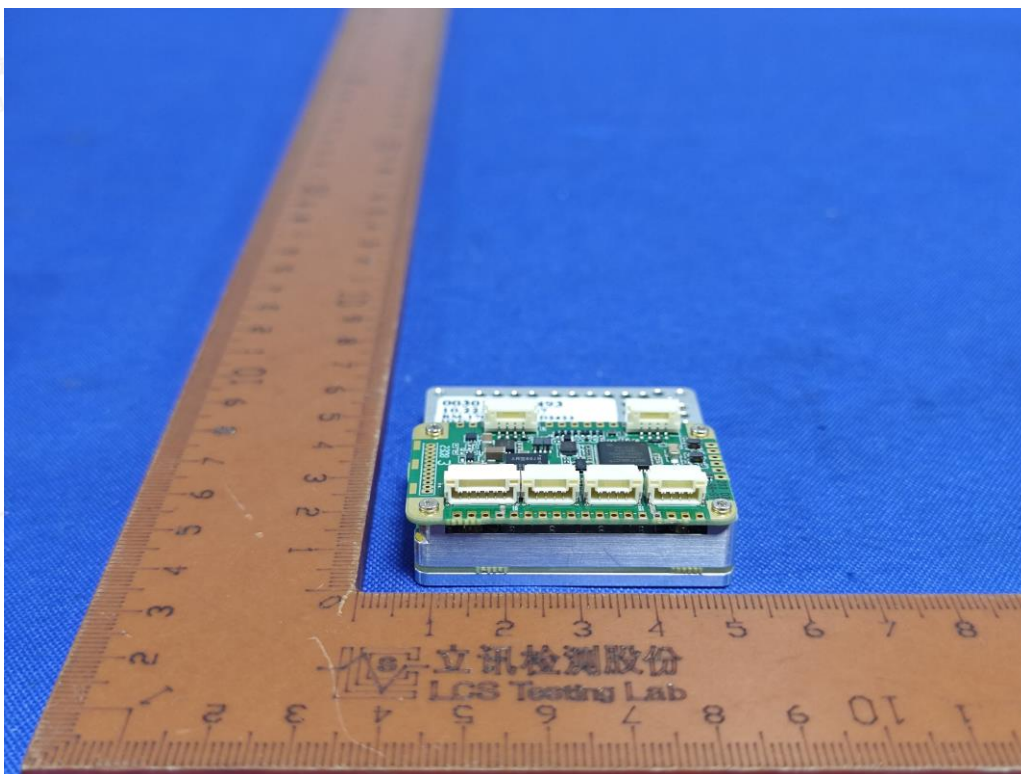


Fig. 9

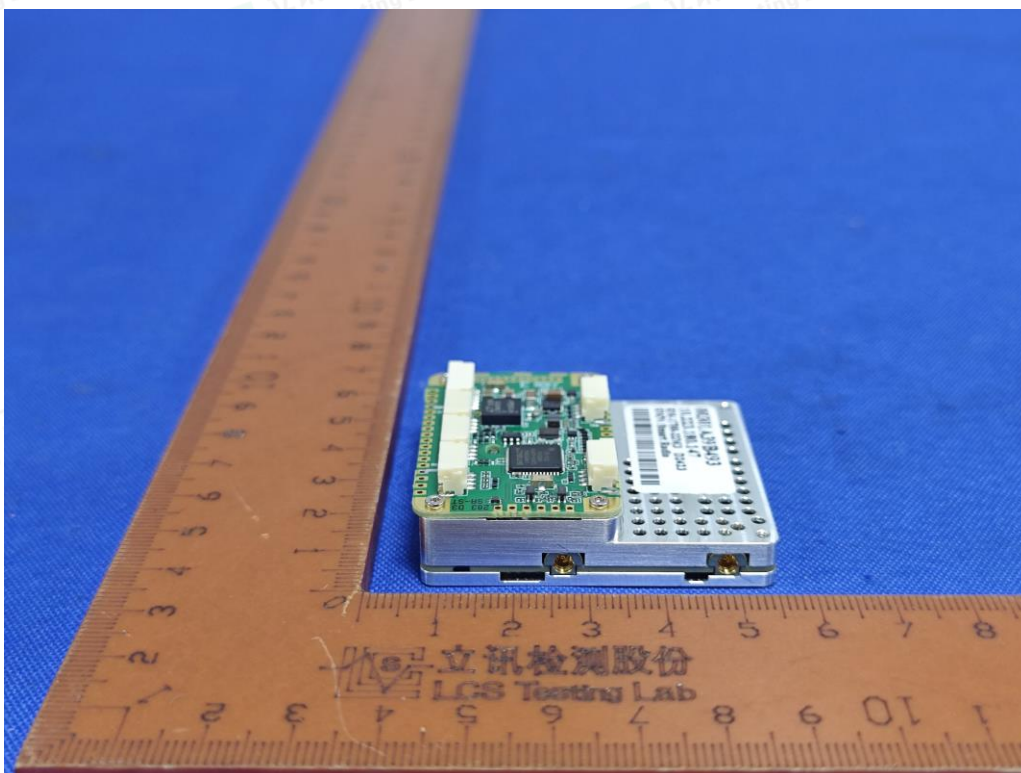


Fig. 10



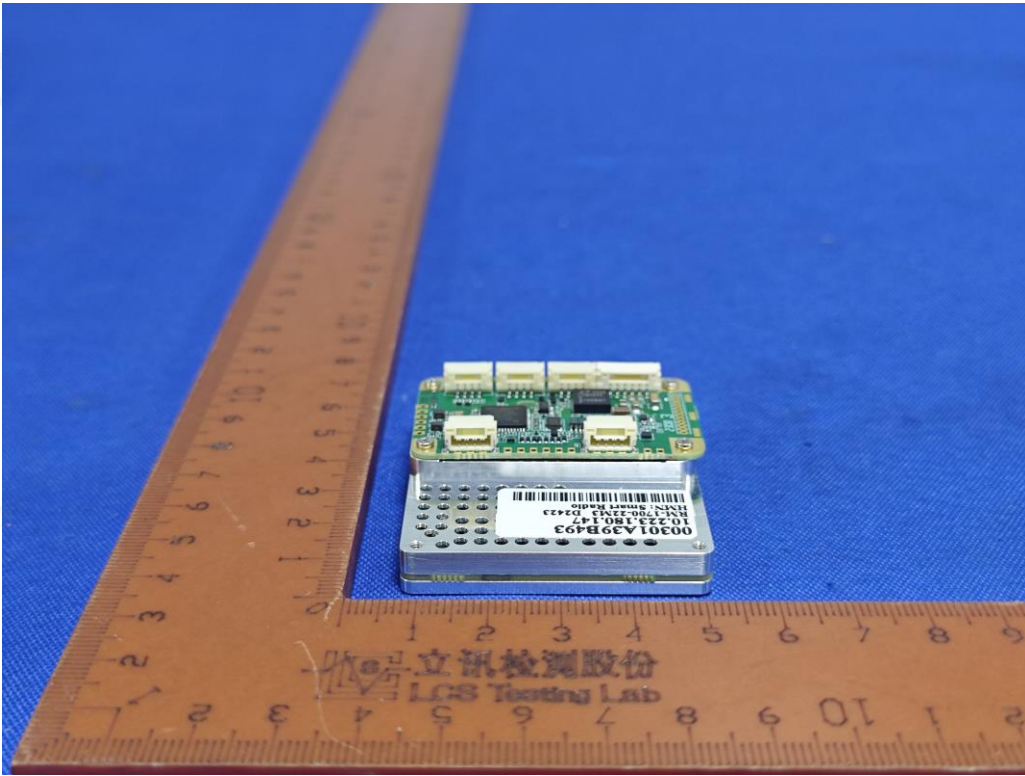


Fig. 11

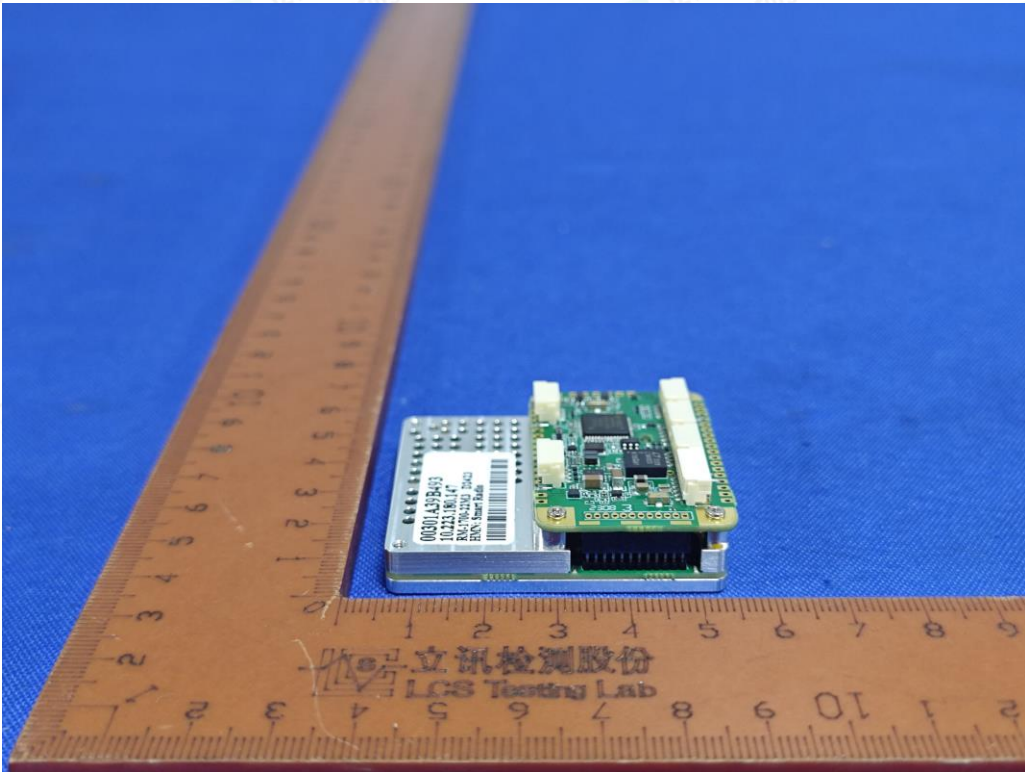


Fig. 12



Shenzhen LCS Compliance Testing Laboratory Ltd.

Add: 101, 201 Bldg A & 301 Bldg C, Juji Industrial Park Yabianxueziwei, Shajing Street, Baoan District, Shenzhen, 518000, China

Tel: +(86) 0755-82591330 | E-mail: webmaster@lcs-cert.com | Web: www.lcs-cert.com

Scan code to check authenticity

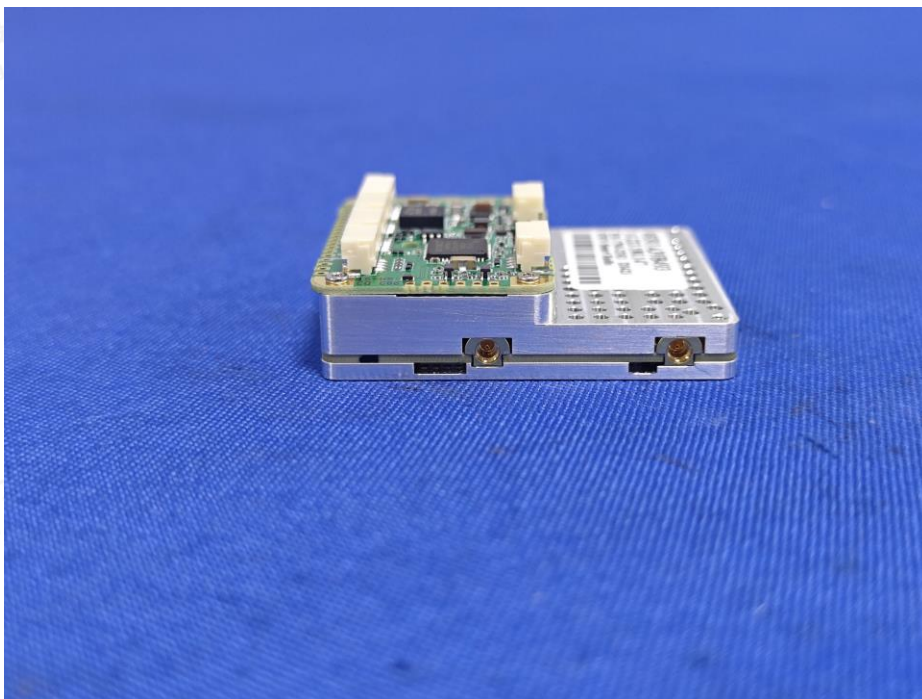


Fig. 13

RM-1700-22M4, RM-1700-22M4-IN (For Reference)

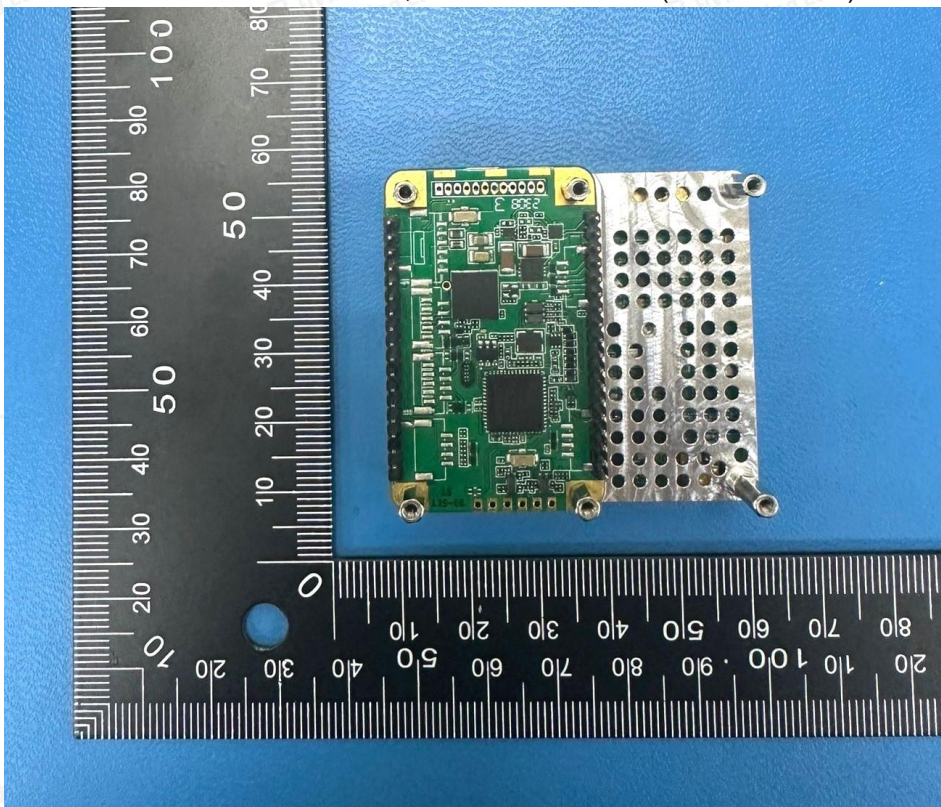


Fig. 14



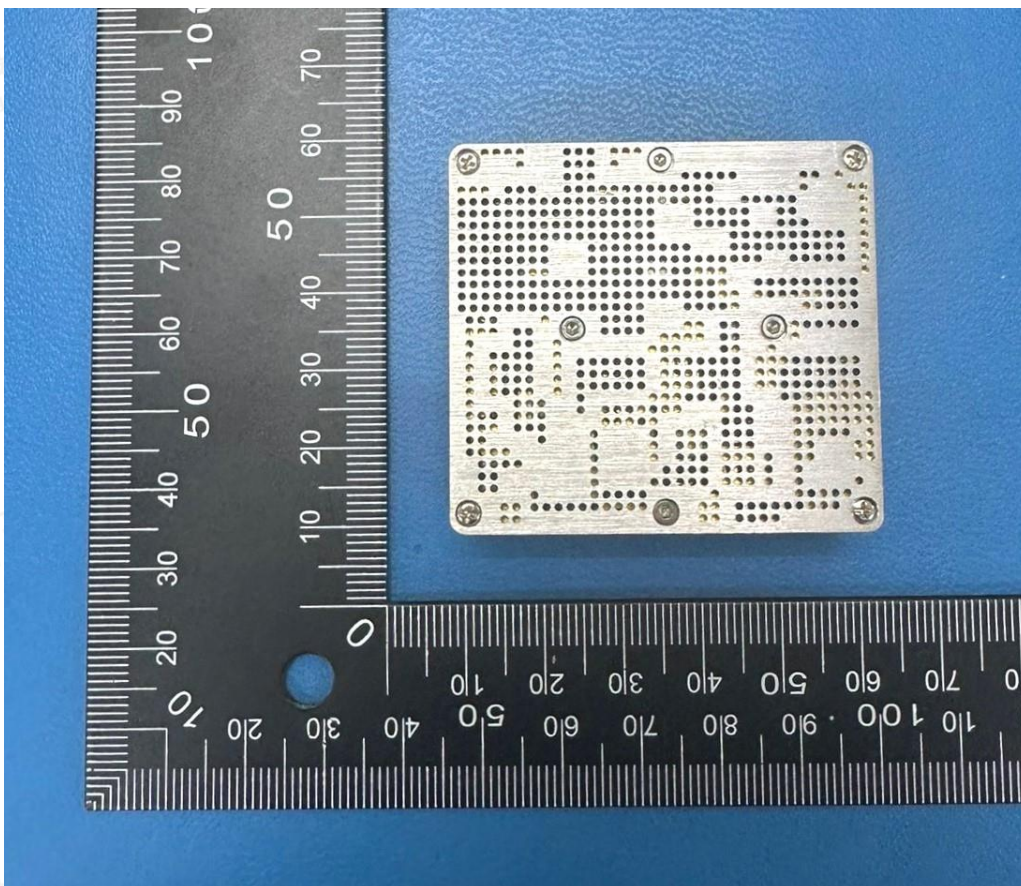


Fig. 15

