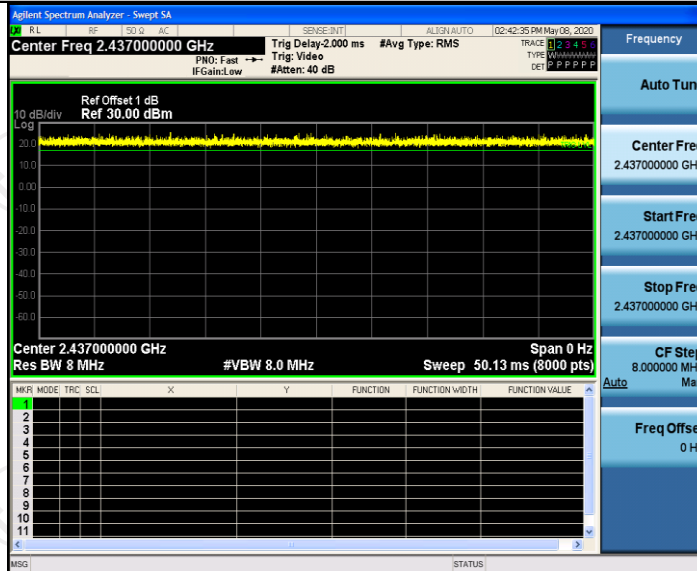
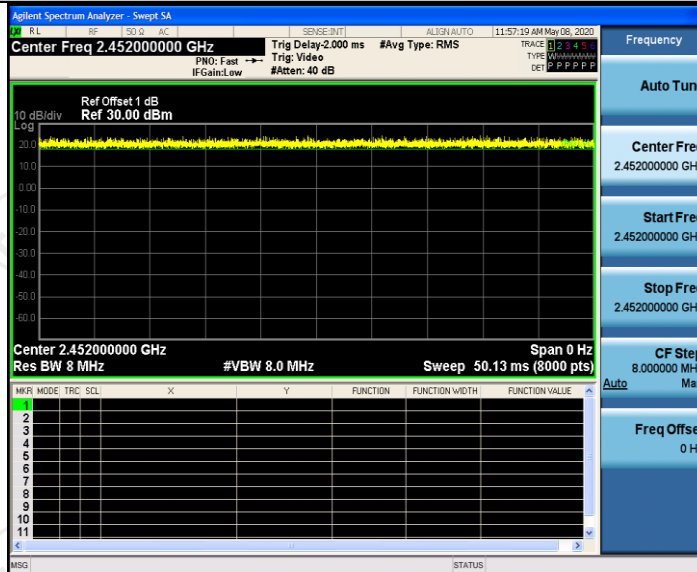


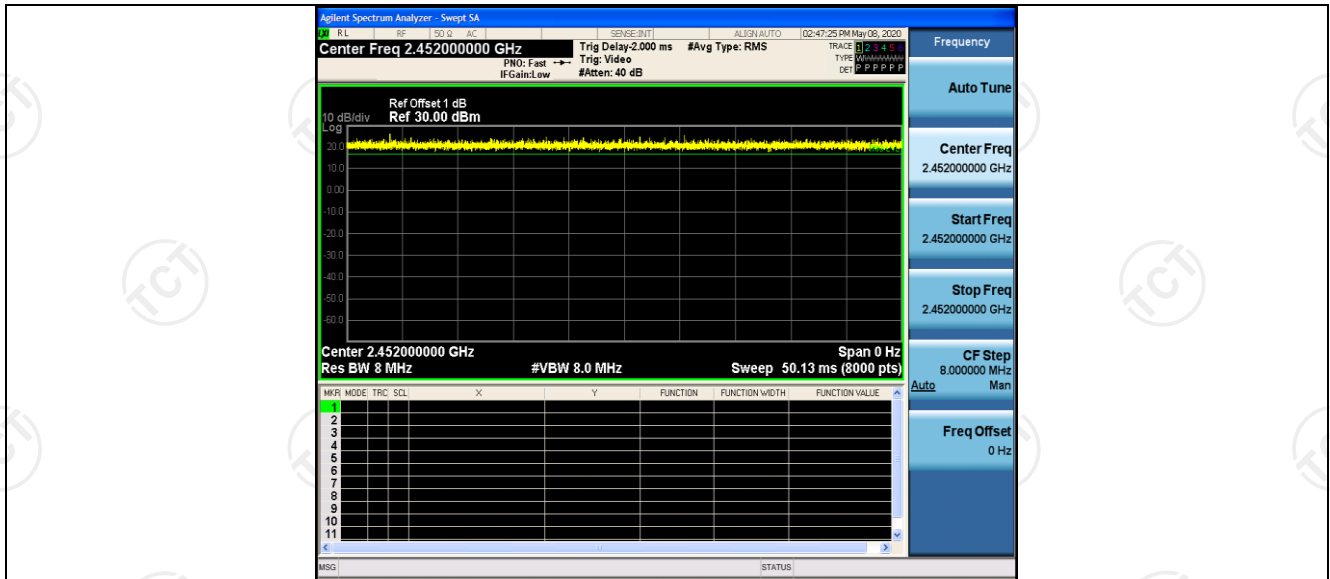
11N40SISO_Ant1_2437



11N40SISO_Ant0_2452



11N40SISO_Ant1_2452

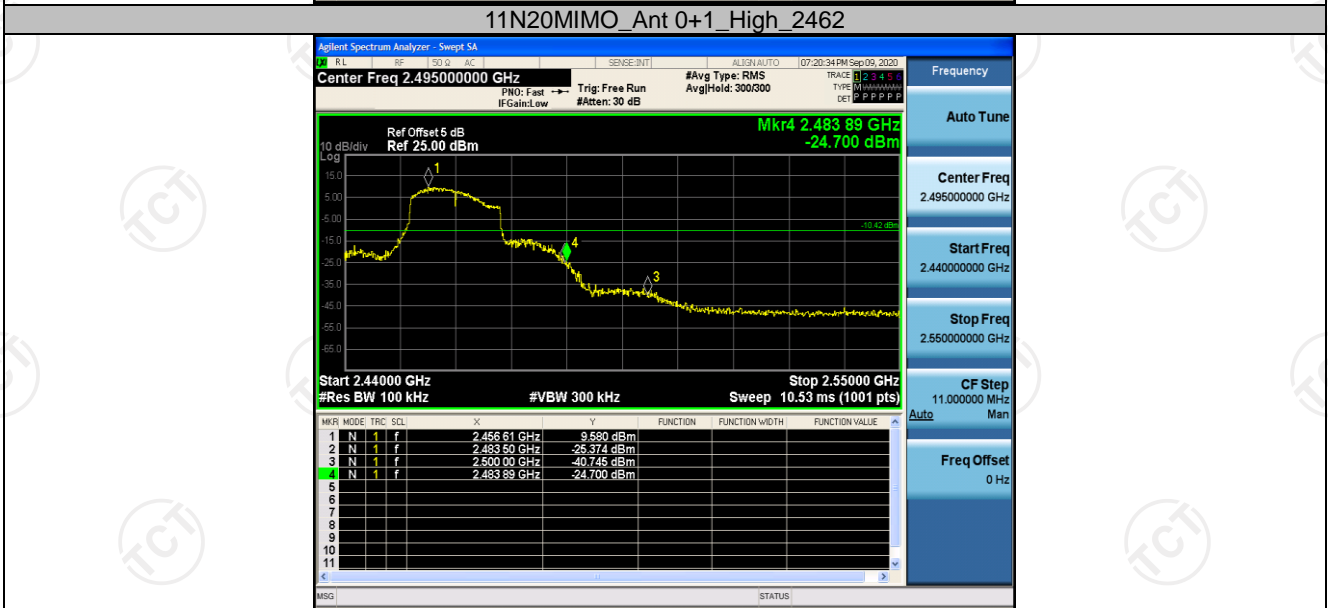
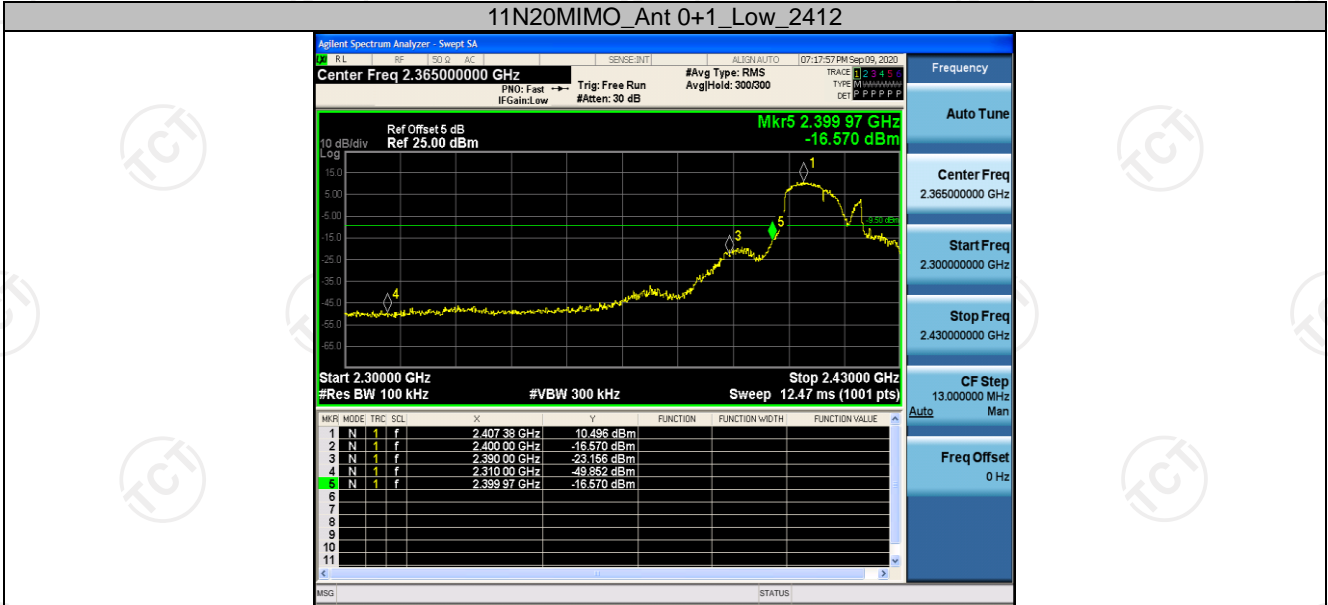


Band edge measurements in MIMO mode

Test Result

TestMode	Antenna	Channel	RefLevel[dBm]	Result[dBm]	Limit[dBm]	Verdict
11N20MIMO	Ant 0+1	2412	10.50	-16.57	<=-9.5	PASS
		2462	9.58	-24.7	<=-10.42	PASS
11N40MIMO	Ant 0+1	2422	6.00	-16.88	<=-14	PASS
		2452	6.63	-18.98	<=-13.37	PASS

Test Graphs



11N40MIMO_Ant 0+1_Low_2422



11N40MIMO_Ant 0+1_High_2452

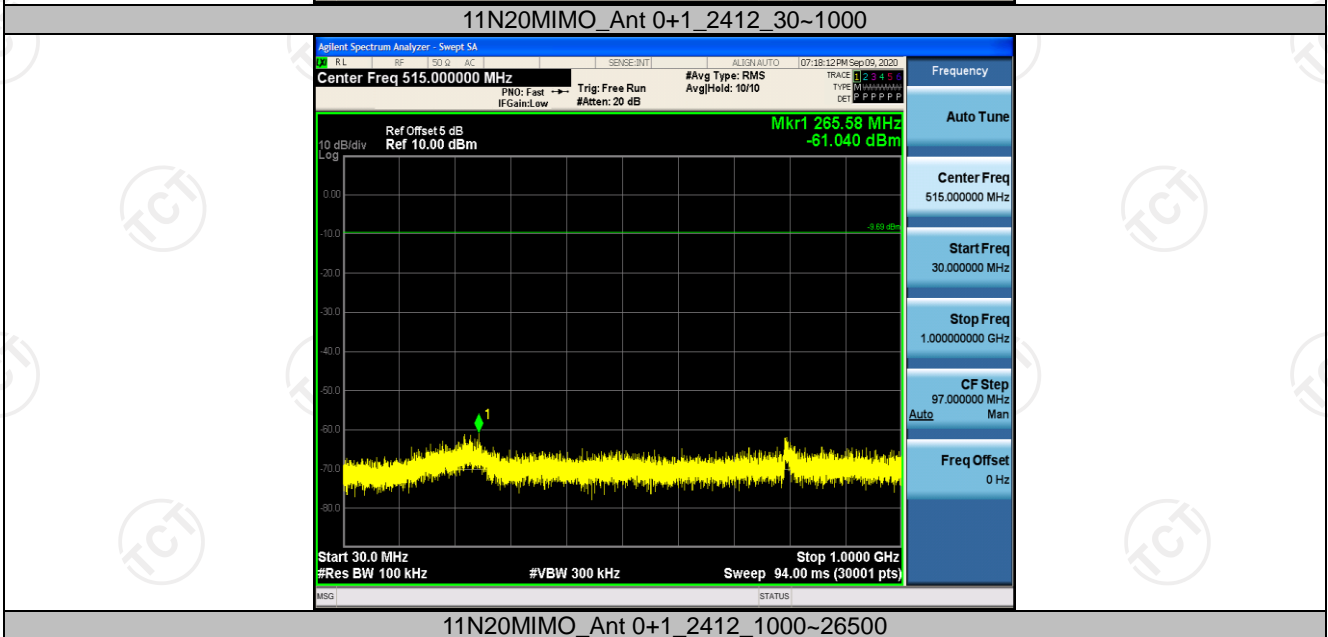
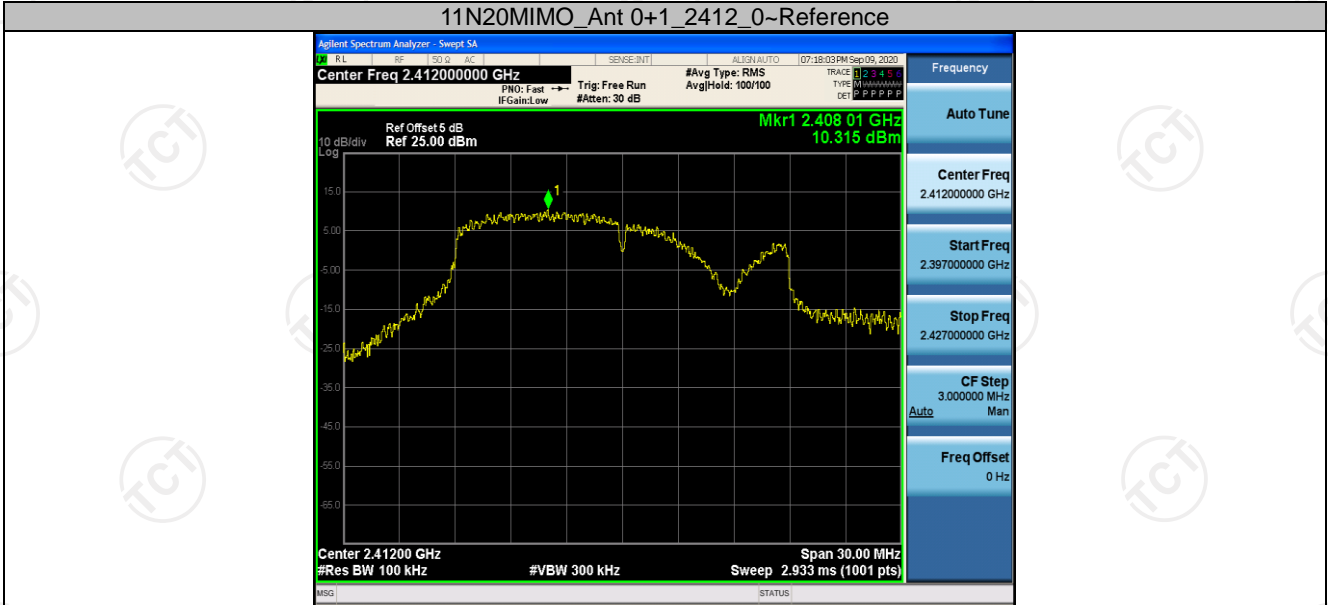


Conducted Spurious Emission in MIMO mode

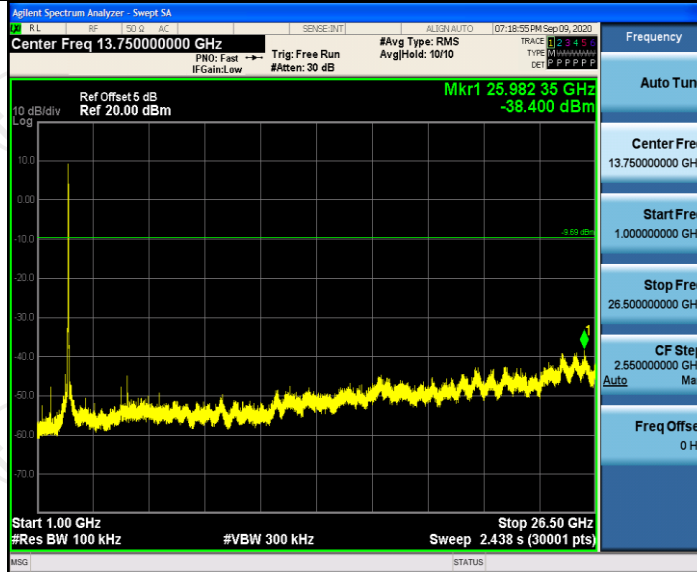
Test Result

TestMode	Antenna	Channel	FreqRange [Mhz]	RefLevel [dBm]	Result [dBm]	Limit [dBm]	Verdict
11N20MIMO	Ant 0+1	2412	Reference	10.32	10.32	---	PASS
			30~1000	30~1000	-61.04	<=-9.685	PASS
			1000~26500	1000~26500	-38.4	<=-9.685	PASS
		2437	Reference	9.25	9.25	---	PASS
			30~1000	30~1000	-61.066	<=-10.75	PASS
			1000~26500	1000~26500	-38.637	<=-10.75	PASS
		2462	Reference	9.27	9.27	---	PASS
			30~1000	30~1000	-61.442	<=-10.73	PASS
			1000~26500	1000~26500	-39.156	<=-10.73	PASS
11N40MIMO	Ant 0+1	2422	Reference	6.49	6.49	---	PASS
			30~1000	30~1000	-62.39	<=-13.509	PASS
			1000~26500	1000~26500	-38.111	<=-13.509	PASS
		2437	Reference	7.22	7.22	---	PASS
			30~1000	30~1000	-61.487	<=-12.783	PASS
			1000~26500	1000~26500	-38.676	<=-12.783	PASS
		2452	Reference	6.12	6.12	---	PASS
			30~1000	30~1000	-60.724	<=-13.876	PASS
			1000~26500	1000~26500	-39.364	<=-13.876	PASS

Test Graphs



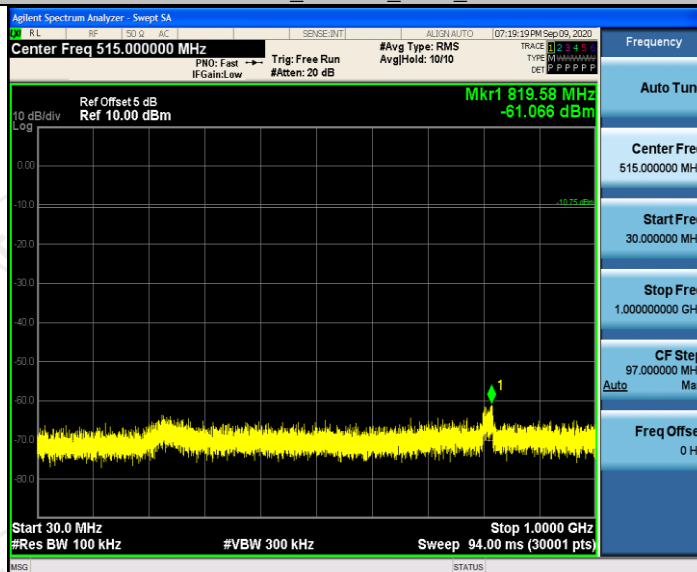
11N20MIMO_Ant 0+1_2412_1000~26500



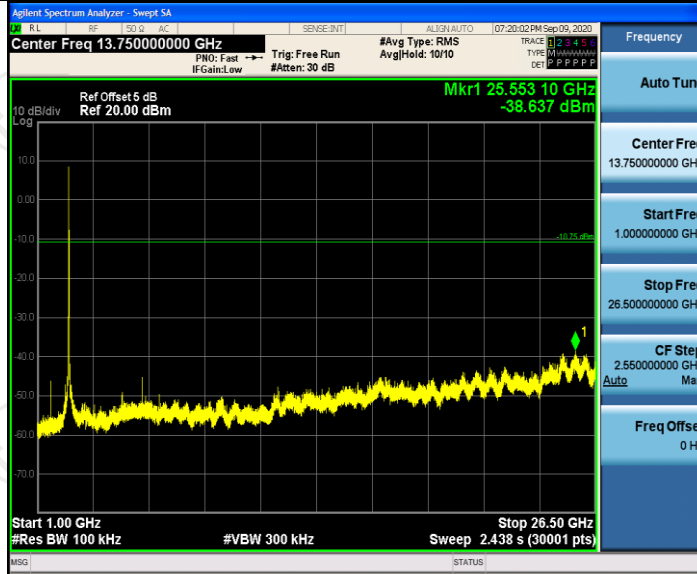
11N20MIMO_Ant 0+1_2437_0-Reference



11N20MIMO_Ant 0+1_2437_30~1000



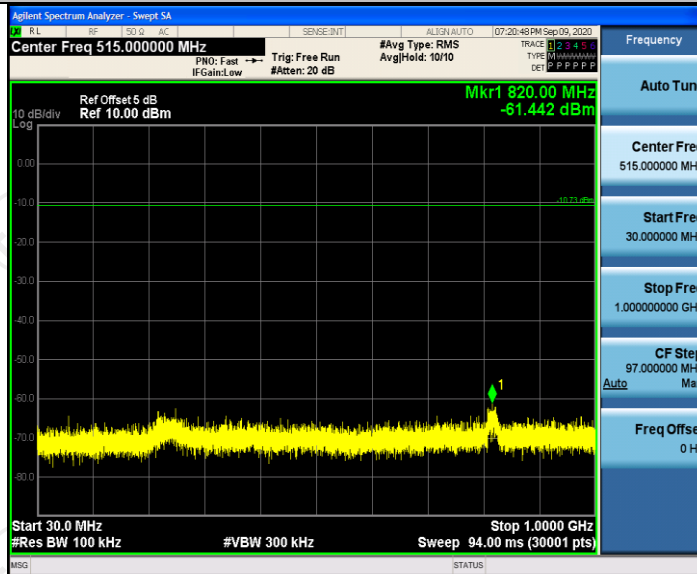
11N20MIMO_Ant 0+1_2437_1000~26500



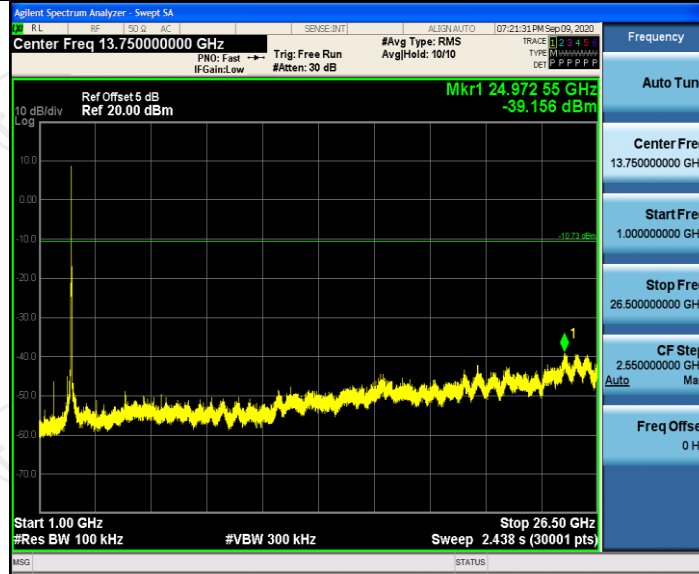
11N20MIMO_Ant 0+1_2462_0-Reference



11N20MIMO_Ant 0+1_2462_30~1000



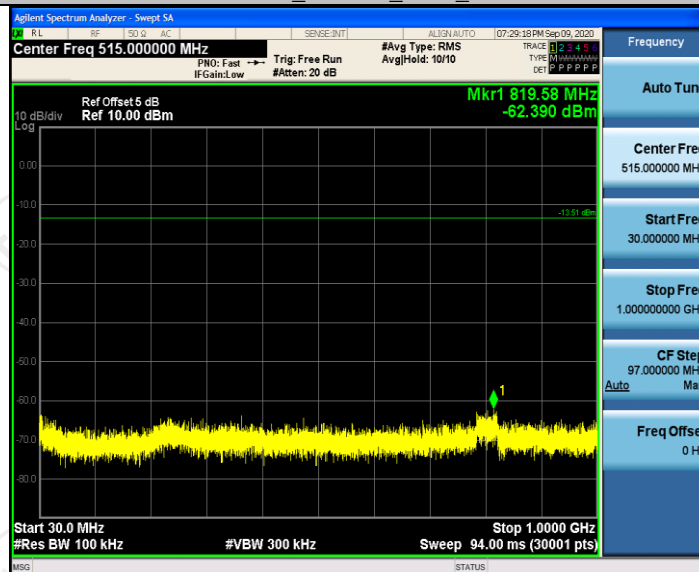
11N20MIMO_Ant 0+1_2462_1000~26500



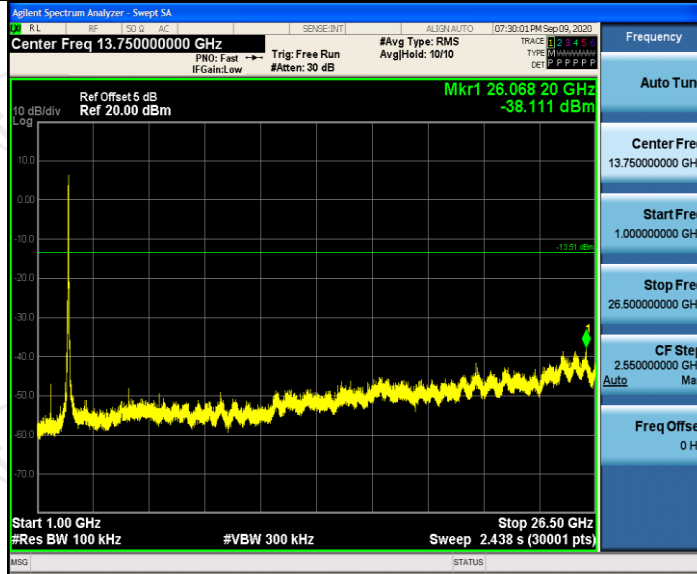
11N40MIMO_Ant 0+1_2422_0-Reference



11N40MIMO_Ant 0+1_2422_30~1000



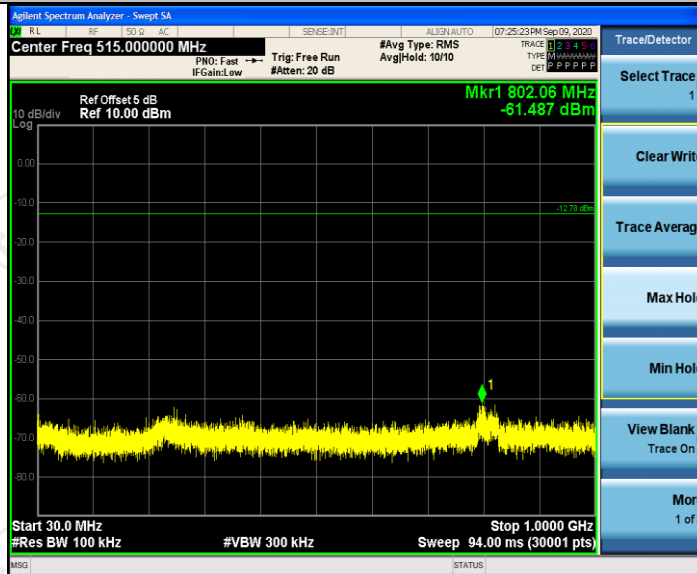
11N40MIMO_Ant 0+1_2422_1000~26500



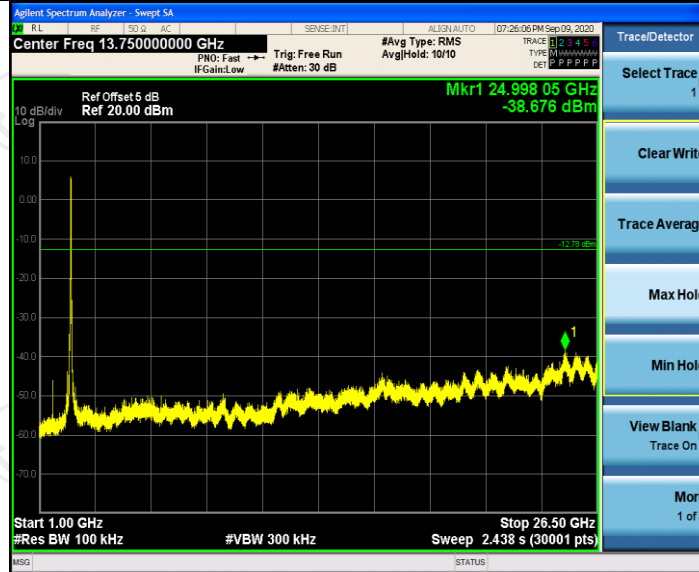
11N40MIMO_Ant 0+1_2437_0-Reference



11N40MIMO_Ant 0+1_2437_30~1000



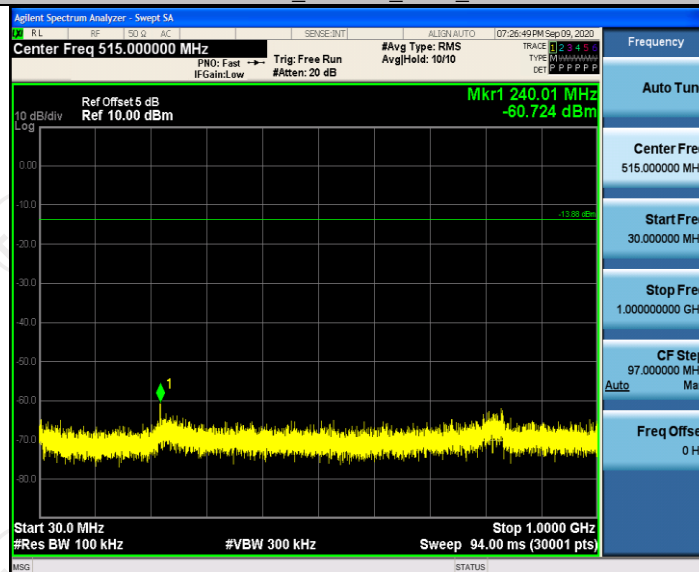
11N40MIMO_Ant 0+1_2437_1000~26500



11N40MIMO_Ant 0+1_2452_0-Reference



11N40MIMO_Ant 0+1_2452_30~1000

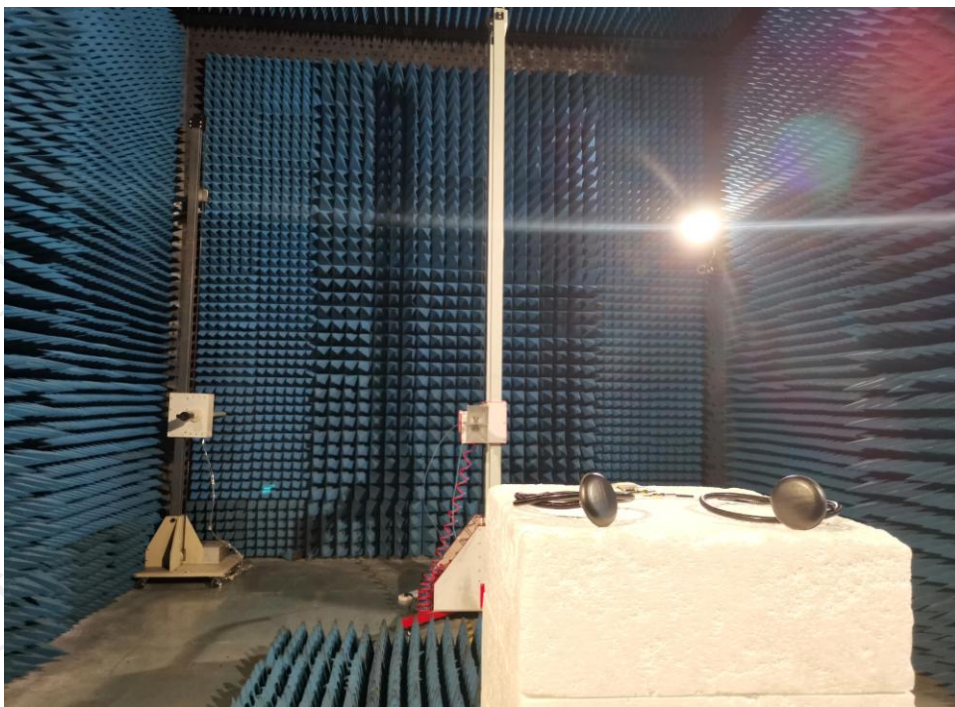
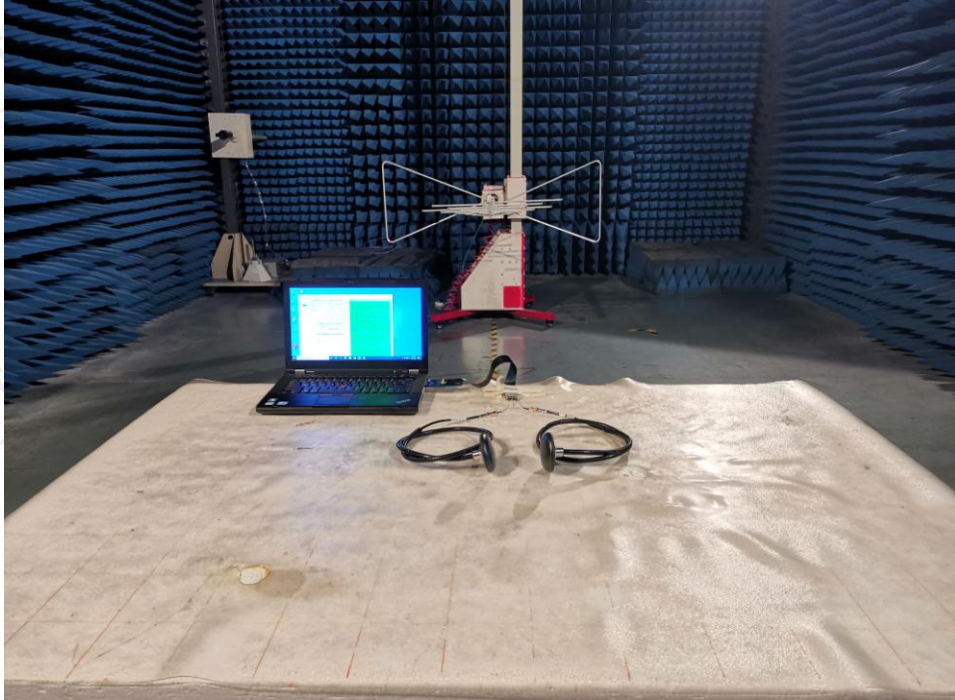


11N40MIMO_Ant 0+1_2452_1000~26500

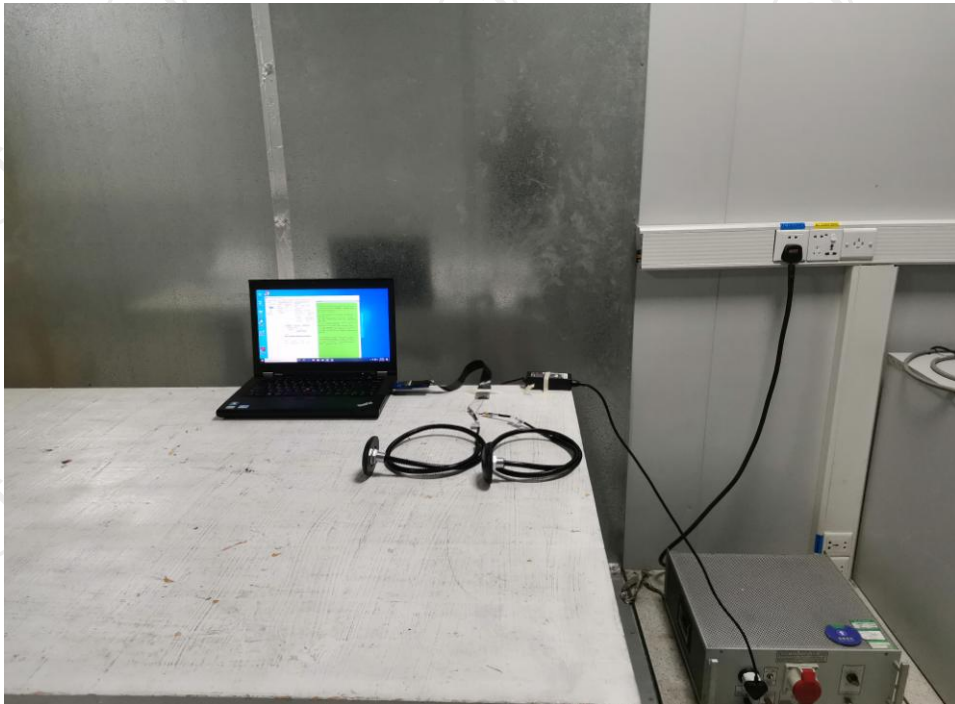


Appendix A: Photographs of Test Setup

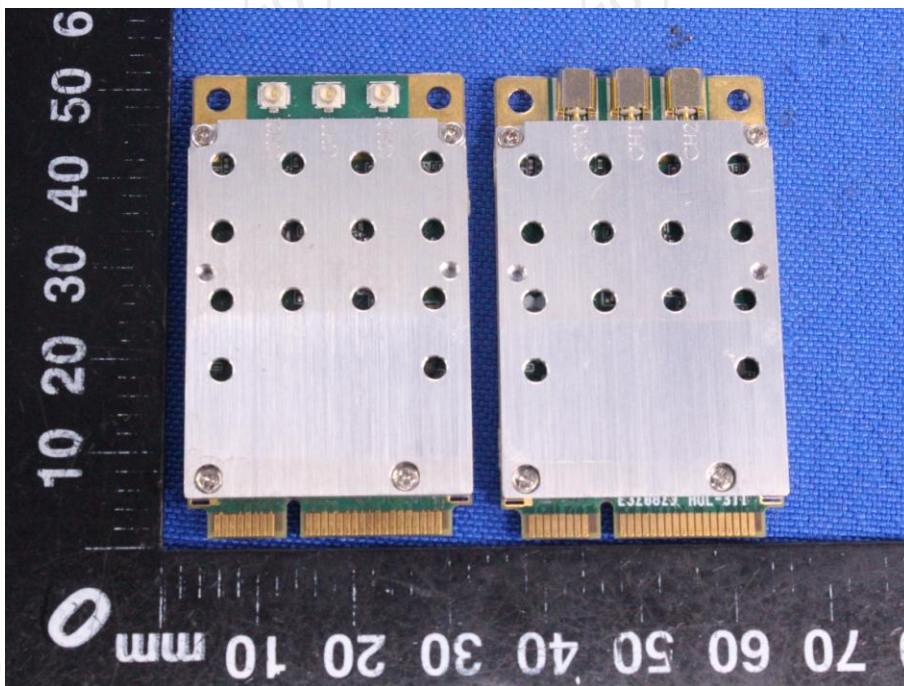
Product: Wi-Fi® Radio Transceiver
Model: NM-DB-2M
Radiated Emission

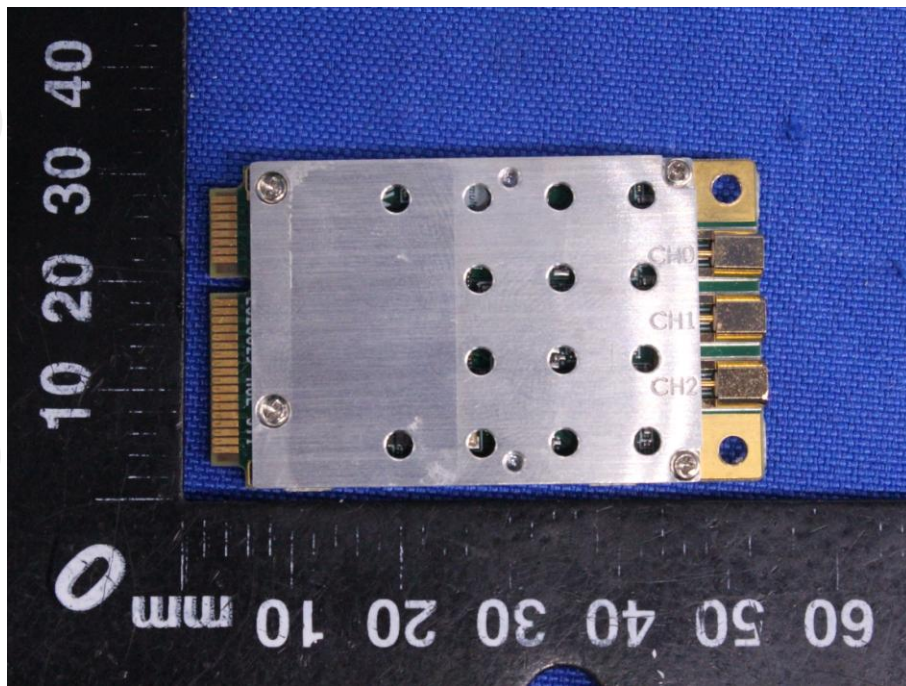
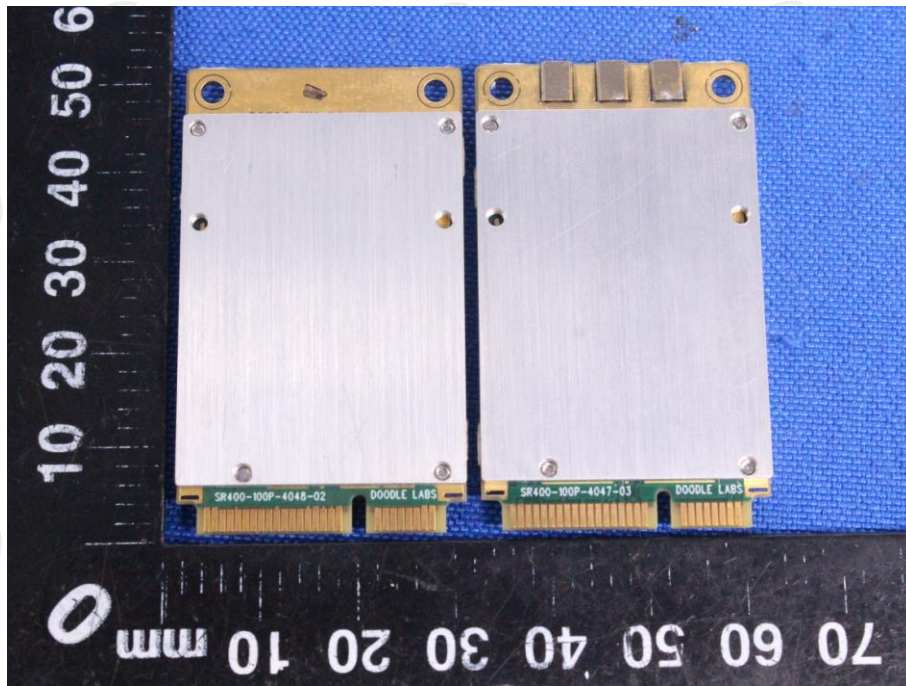


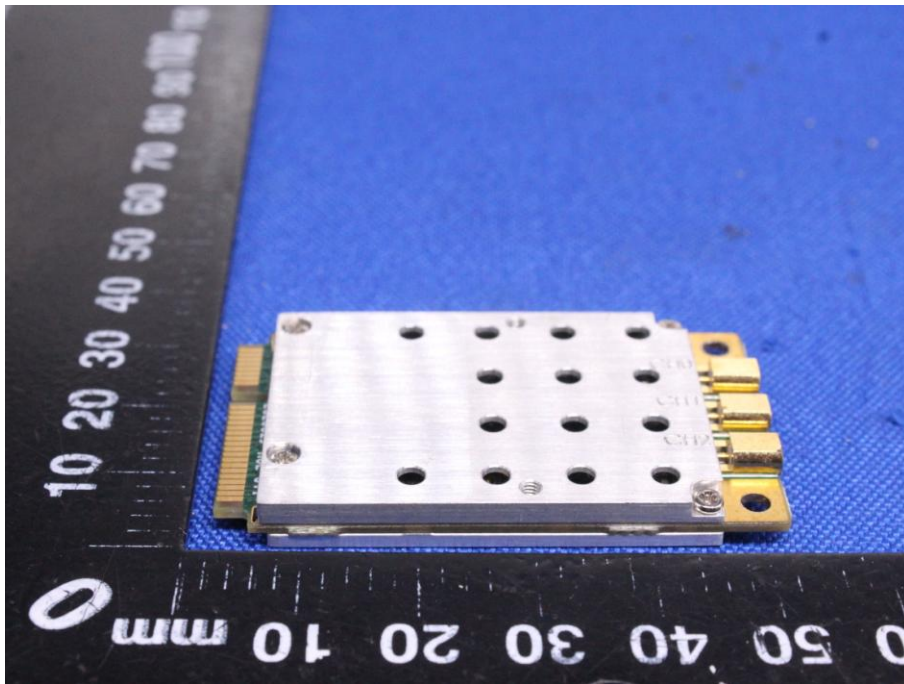
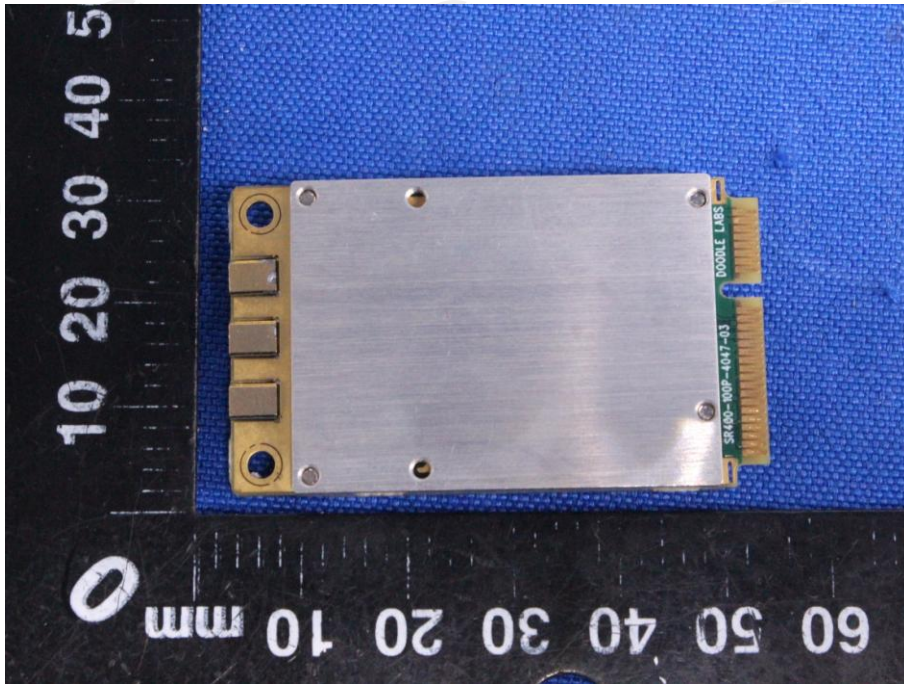
Conducted Emission

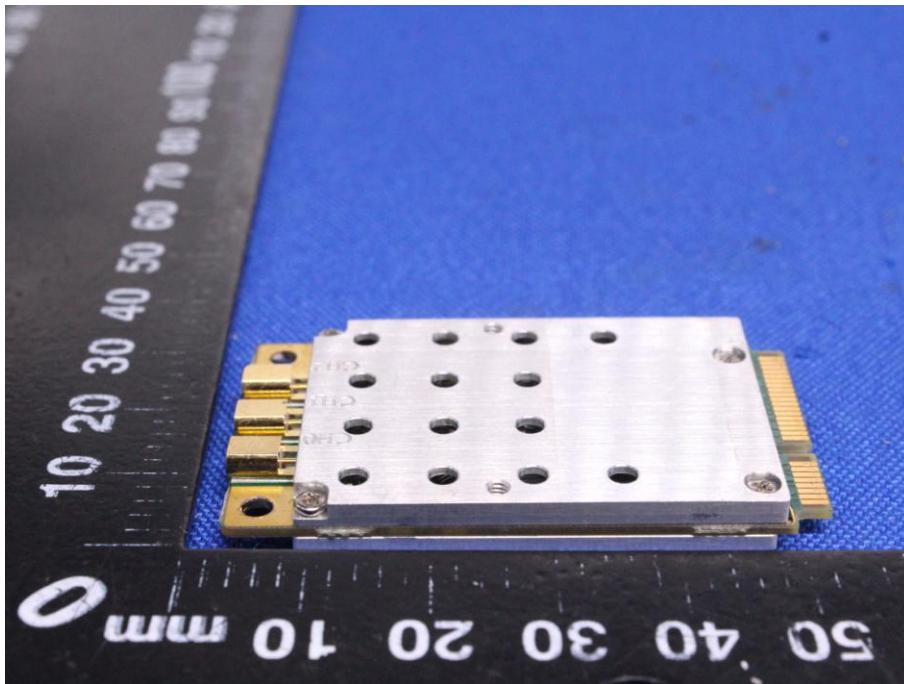
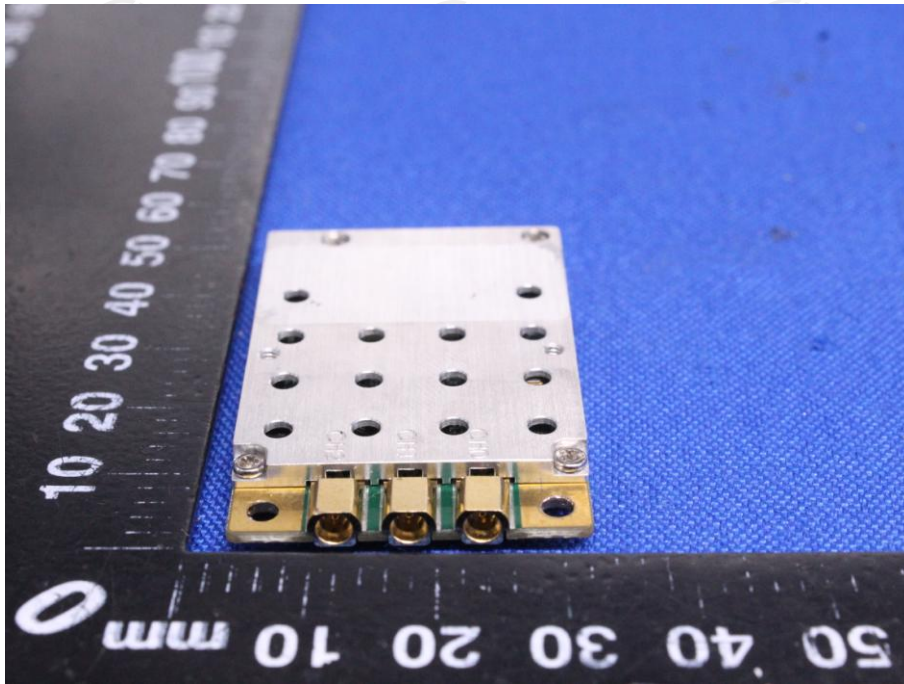


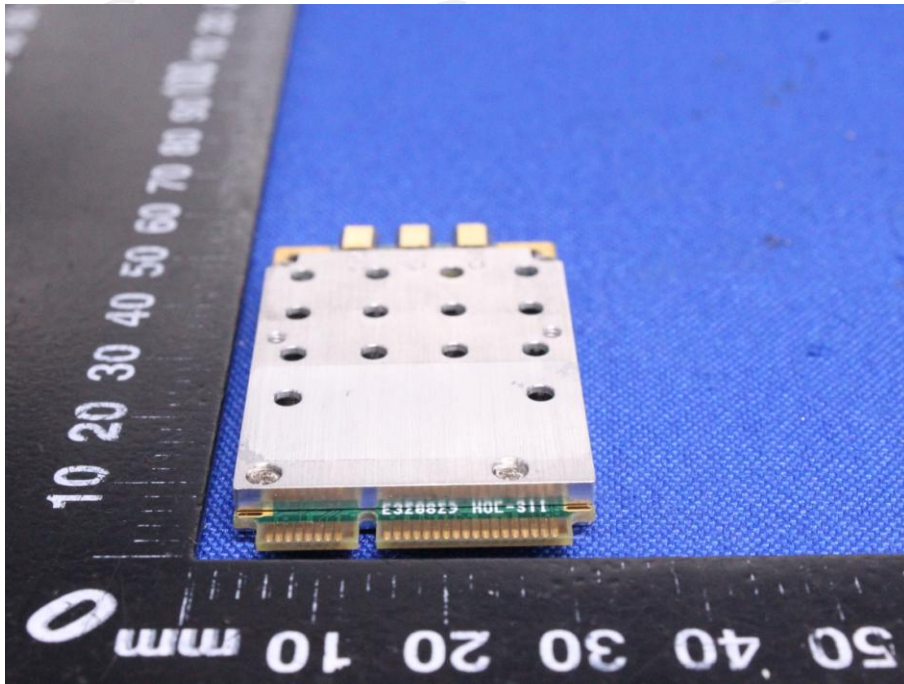
Appendix B: Photographs of EUT
Product: Wi-Fi® Radio Transceiver
Model: NM-DB-2M
External Photos



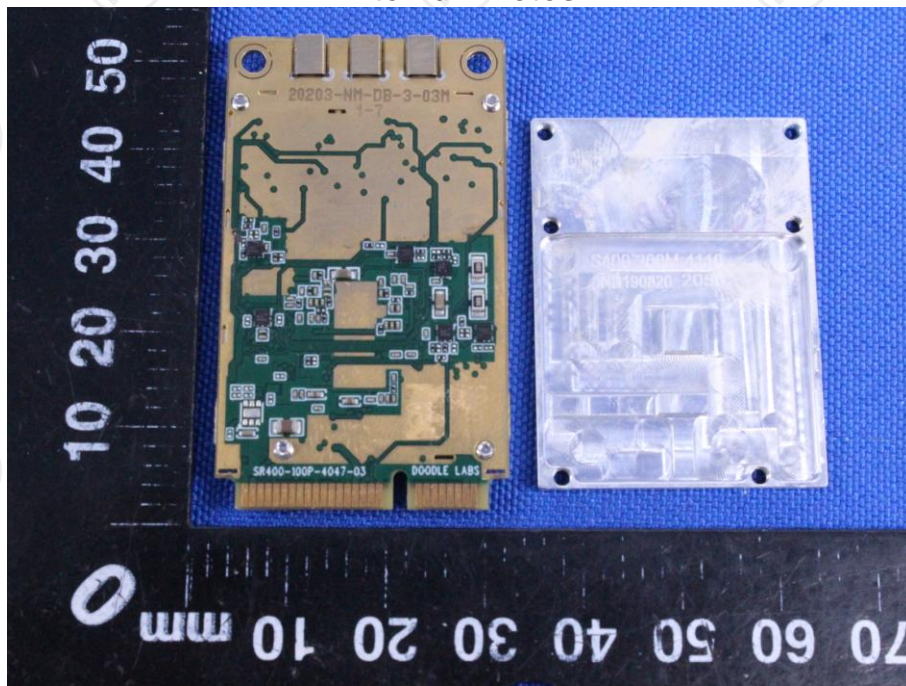


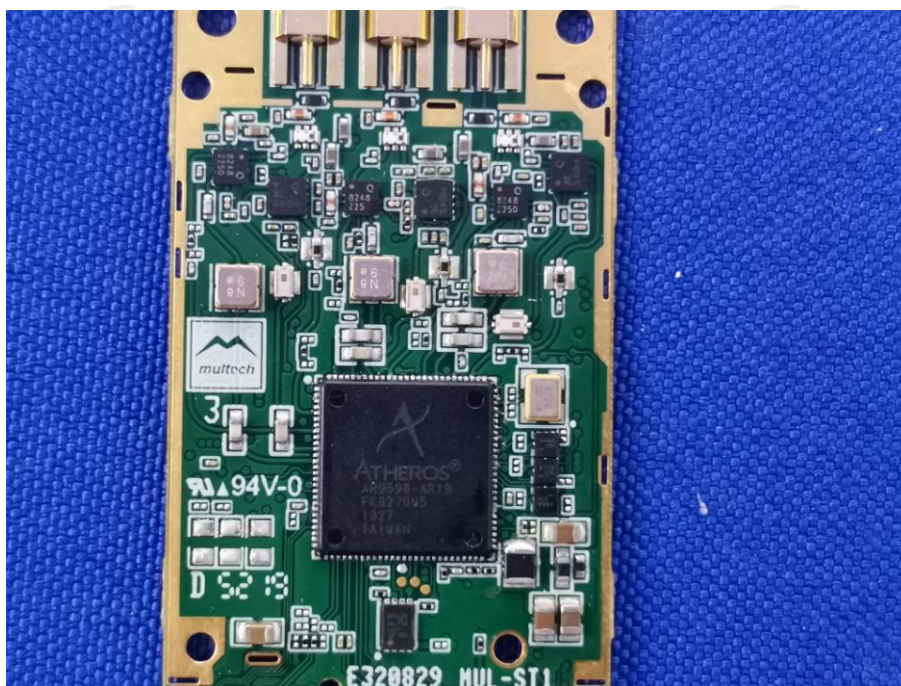






Product: Wi-Fi® Radio Transceiver
Model: NM-DB-2M
Internal Photos





*******END OF REPORT*******