

In the Box

Water Leak Sensor w/ Battery (1x CR2, 3V Lithium)	Stand	Sensor Cable	Installation/ Quick-start Guide	Screws and Anchors	Adhesive Pad

Tools Needed

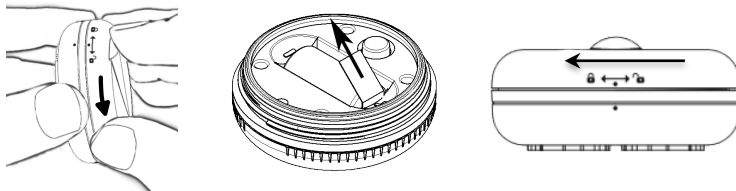
#1 Phillips Screwdriver

Note:

Additional equipment may be required due to building construction or materials, or other radio interference that may reduce the radio range.

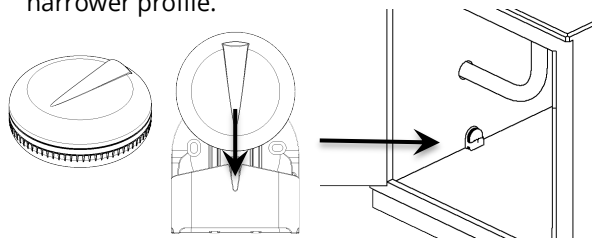
PAIRING INSTRUCTIONS

- Follow your system's instructions to prepare to add devices to the system.
- Remove the Face Plate from the sensor by turning the Face Plate counter-clockwise and pull the battery tab to start the pairing process.
- When the sensor is detected and added to the system, replace the Face Plate by aligning the dots and turning the Face Plate clockwise.
- Make sure the dots are fully aligned for a proper seal, then proceed to the sensor installation.



INSTALLATION INSTRUCTIONS

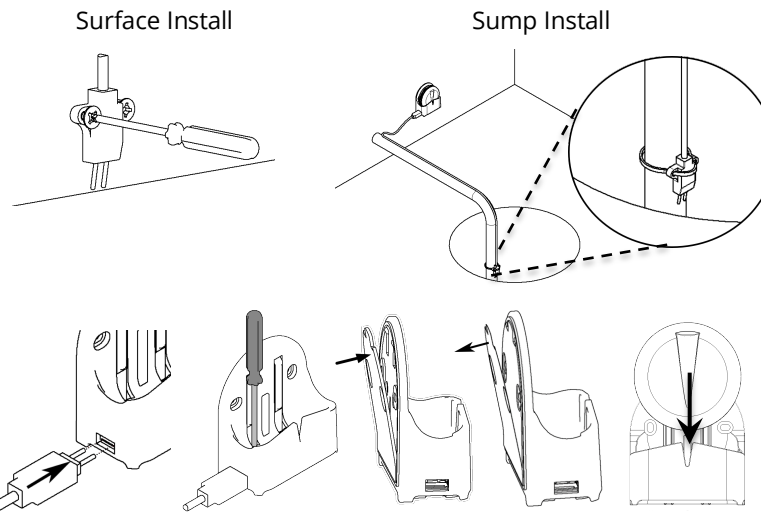
- Identify a level surface for the sensor, where water will likely accumulate in the event of a leak. If the sensor is too wide for placement at the desired location, the stand can be used for a narrower profile.



For tighter locations or locations with radio problems, use the included Sensor Cable.

INSTALLING THE SENSOR CABLE (OPTIONAL)

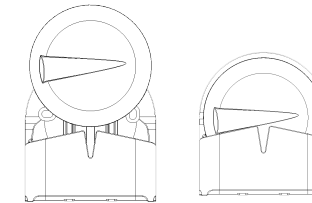
- To install the Sensor Cable, first run the cable to the desired location, and fasten the winged end of the Sensor Cable into place. Note that the tips are angled to improve the sensing ability when the tips are near a surface.



- Insert the square end of the Sensor Cable into the terminals on the stand.
- Screw down both terminals until the cable is firmly held in place.
- Mount the Stand to the wall or other surface using the supplied double-sided adhesive pad or screws.
- Insert the Water Leak Sensor into the stand to begin operation.

TESTING THE SENSOR

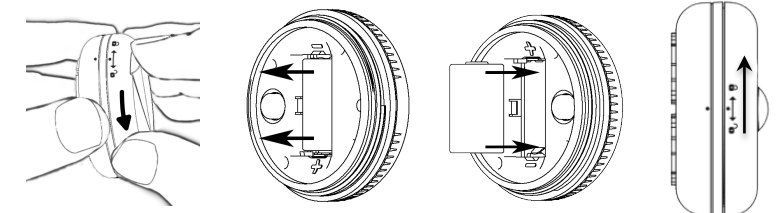
- To test the sensor, remove it from the stand or floor.
- Insert the sensor into the stand 90 degrees from upright in either direction to short the contacts on the sensor.
- The sensor will send a message to the connected home system indicating a water leak. The LED will not light up to preserve battery life.



REPLACING THE BATTERY

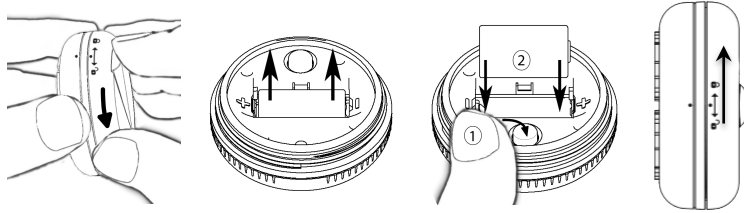
(Use only Panasonic CR2 3V lithium battery)

- Grasp the top of the sensor Face Plate, rotate counter-clockwise and lift from the sensor Body.
- Grasp the battery from both ends and lift to remove the battery from the sensor.
- Insert a new battery into the sensor, observing the proper polarity.
- Position the sensor Face Plate over the Sensor Body, aligning the dots on the Face Plate and Body, then rotate clockwise to align the dots again to close.



FACTORY RESETTING THE SENSOR

- Remove the sensor Face Plate.
- Remove the battery.
- Press and hold the Tamper Switch while re-inserting the battery.
- Release the Tamper Switch when the LED lights on the front of the sensor. The sensor is reset to factory defaults and will respond to pairing requests.
- After pairing, replace the Face Plate, making sure the Face Plate is fully sealed.
- Position the Water Leak Sensor where desired.



LED INDICATIONS

Solid at power up: Initializing, checking for Factory Reset

3 red flashes then pause: Searching for network to join

SPECIFICATIONS

Operating Conditions	32–104°F / 0–40°C 20–90% humidity (non-condensing)
Storage	-4–185 °F / -20–85°C 20–95% humidity (non-condensing)
Protocols Supported	ZigBee HA 3.0
RF Freq.	2.4 GHz
Battery	3V Lithium CR2
IP rating	IP 57
Size	<i>Sensor:</i> Ø 2.17" x 0.98" / Ø 55.0 mm x 24.9 mm <i>Stand:</i> 2.31" x 2.59" x 1.18" / 58.8 mm x 65.9 mm x 30.0 mm <i>Sensor Cable Length:</i> 78" / 2 m

FCC STATEMENTS

WARNING: Changes or modifications to this unit not expressly approved by the party responsible for compliance could void the user's authority to operate the equipment.

This device complies with Part 15 of the FCC Rules. Operation is subject to the following two conditions: (1) this device may not cause harmful interference, and (2) this device must accept any interference received, including interference that may cause undesired operation.

NOTE: This equipment has been tested and found to comply with the limits for a Class B digital device, pursuant to Part 15 of the FCC Rules. These limits are designed to provide reasonable protection against harmful interference in a residential installation. This equipment generates, uses and can radiate radio frequency energy, and if not installed and used in accordance with the instructions, may cause harmful interference to radio communications. However, there is no guarantee that interference will not occur in a particular installation. If this equipment does cause harmful interference to radio or television reception, which can be determined by turning the equipment off and on, the user is encouraged to try to correct the interference by one or more of the following measures:

- Reorient or relocate the receiving antenna.
- Increase the separation between the equipment and receiver.
- Connect the equipment into an outlet on a circuit different from that to which the receiver is connected.
- Consult the dealer or an experienced radio/TV technician for help.

FCC AND INDUSTRY CANADA

RF Radiation Exposure statement: This equipment complies with FCC and Industry Canada RF radiation exposure limits set forth for an uncontrolled environment. This equipment should be installed and operated with a minimum distance of 20 centimeters between the antenna and all persons.

INDUSTRY CANADA

This device complies with Industry Canada's licence-exempt RSSs. Operation is subject to the following two conditions: (1) this device may not cause interference, and (2) this device must accept any interference, including interference that may cause undesired operation of the device.

Cet appareil est conforme aux CNR exemptes de licence d'Industrie Canada .

Son fonctionnement est soumis aux deux conditions suivantes : (1) l'appareil ne doit pas produire de brouillage, et (2) l'utilisateur de l'appareil doit accepter tout brouillage radioélectrique subi, même si le brouillage est susceptible d'en compromettre le fonctionnement.

SALUS WARRANTY

SALUS North America, Inc. ("Salus") warrants that for a period of five (5) years ("Warranty Period") from the date of purchase by the consumer ("Customer"), this device, excluding batteries ("Product"), shall be free of defects in materials and workmanship under normal use and service in accordance with all supplied instructions. During the warranty period, Salus shall, at its option, repair or replace any defective Products, at no charge for the device. Any replacement and/or repaired devices are warranted for the remainder of the original Warranty Period or ninety (90) days, whichever is longer.

This warranty does not cover removal or reinstallation costs. This warranty does not apply to any Product (i) which has been modified, repaired, or altered, except by Salus or an authorized Salus representative, (ii) which has not been maintained in accordance with any handling or operating instructions supplied by Salus, or (iii) which has been subjected to unusual physical or electrical stress, misuses, abuse, negligence or accidents.

This warranty is the only express warranty Salus makes for the Product. Any implied warranties, including warranties of merchantability or fitness for a particular purpose, are limited to the Warranty Period or the shortest period allowed by law.

SALUS SHALL NOT BE LIABLE FOR ANY LOSS OR DAMAGE OF ANY KIND, INCLUDING ANY SPECIAL, INCIDENTAL OR CONSEQUENTIAL DAMAGES RESULTING, DIRECTLY OR INDIRECTLY, FROM ANY BREACH OF ANY WARRANTY, EXPRESS OR IMPLIED, OR ANY OTHER FAILURE OF THIS PRODUCT. Some states and provinces do not allow the exclusion or limitation of incidental or consequential damages, or limitation on the duration of implied warranties of merchantability or fitness, so these exclusions or limitations may not apply to you.

No oral or written information or advice given by Salus or a Salus-authorized representative shall modify or extend this warranty. If any term is held to be illegal or unenforceable, the legality or enforceability of the remaining terms shall not be affected or impaired.

Customer's sole and exclusive remedy under this limited warranty is product repair or replacement as provided herein. If a Product under warranty is defective, the Customer may:

- contact the party ("Seller") from which the Customer purchased the Product to obtain an equivalent replacement product after the Seller has determined that the Product is defective and the Customer is eligible for a replacement, or
- contact Salus Service at support@salusinc.com, to determine whether the device qualifies for a replacement. If a replacement is warranted and is shipped prior to the return of the device under warranty, a credit card is required and a hold may be placed on the Customer's credit card for the value of the replacement until the returned device is verified as eligible for replacement, in which case, the Customer's credit card will not be charged.

This warranty gives you specific legal rights, and you may also have other rights that vary from jurisdiction to jurisdiction. If you have any questions regarding this warranty, please write Salus at:

SALUS North America, Inc.
850 Main Street
Redwood City, CA 94063