

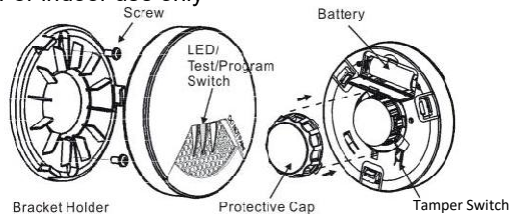
Introduction

The HS6101 is a supervised, wireless, Smoke Sensor for use with SOLO Security and PERS systems. If the sensor detects a certain density of smoke then the built in siren will sound and a signal will be sent to the SOLO base unit.

Please refer to the SOLO installation guide for further information.

Product Description and Specification

Figure 1: *** For indoor use only ***



Specification:

Frequency Range: 433.92Mhz
 Operating Range: 33m (100 ft) line of sight
 Operating Temp.: -10°C~ 50°C (14°F~122°F)
 Battery: Panasonic CR123A * 1PC

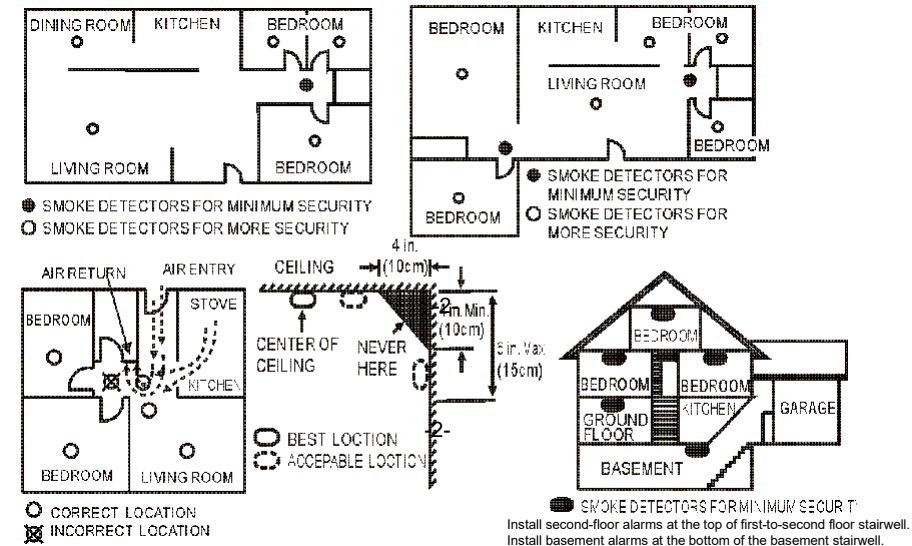
Package Content:

1pc HS 6101/HS 6101-A
 Smoke Sensor
 1pc Bracket Holder
 1pc Plastic Anchor &
 2pcs Screw
 1pc CR123A Lithium
 Battery
 1pc Installation &
 Operation Manual

Installation

1. Find a suitable location to mount the detector. See Figure 2 (opposite).
2. Open the battery cover to insert the battery.
3. Enroll and complete the placement test as per your SOLO instructions. Confirm that the installation location is within suitable RF range of the SOLO base station before proceeding.
4. Remove the bracket from the detector by rotating it counter-clockwise.
5. Place the bracket where you are going to install the detector. In each of the key hole slots, draw a mark to locate plastic anchor and screw. Using a 3/16-inch (5mm) drill bit, drills two holes at the marks and insert plastic anchor, and attached the bracket by using the screws.
6. Install the detector into the bracket by rotating it clockwise.

Figure 2: Suggested Locations for Installation:



Operation

1. **Stand-by Mode:** The Red LED flashes one time every 6 minutes.
2. **Alarm Mode (The status when the alarm is triggered.):** If a certain density of smoke is detected, an audible alarm with 3 beeps will occur. The red LED will flash continuously and rapidly and the detector will send an alarm condition to the SOLO base.
3. **Error Mode:** If the detector beeps and the yellow LED flashes three times every 43 seconds, it indicates the Smoke Sensor is not working properly. Repair or service is required.
4. **Low Battery Warning Mode:** The yellow LED will flash once every 43 seconds with a short "beep" sound and a low-battery report will be issued to the SOLO base. The battery will need to be changed to reset this warning.
5. **Test Mode:** After inserting the battery, push the test switch for about 3 seconds to enter test mode. The red LED will flash once every 11 seconds. The detector will quit test mode after 10 minutes or when the test switch is pushed again.
6. **Tamper Mode:** 1) If the detector is removed from the bracket, the yellow LED will light solid and the unit will emit a continuous alarm until it is mounted back on the bracket. 2) On installation the detector should be mounted on the bracket within 3 minutes to avoid triggering the tamper mode.
7. **Silent Mode:** When the detector is in alarm, the user can press the test switch to enter silent mode and disable the alarm temporarily. The red LED light will still flash continuously. The silent function will automatically return to normal operation if the smoke concentration around the detector is still at or above alarm level after 10 minutes of silent mode.

Federal Communications Commission Statement

This equipment has been followed and found to comply with the limits for a Class B digital device, pursuant to Part 15 of the FCC Rules. These limits are designed to provide reasonable protection against harmful interference in a residential installation. This equipment generates, uses, and can radiate radio frequency energy and, if not installed and used in accordance with the instruction, may cause harmful interference to radio communications. However, there is no guarantee that interference will not occur in a particular installation. If this equipment does cause harmful interference to radio or television reception, which can be determined by turning the equipment off and on, the user is encouraged to try and correct the interference by one of the following measures: Reorient or relocate the receiving antenna,

Increase the separation between the equipment and receiver,

Connect the equipment into an outlet on a circuit different from that to which the receiver is connected.

Consult the dealer or an experienced radio/TV technician for help.

This device complies with Part 15 of the FCC Rules. Operation is subject to the following two conditions: (1) this device may not cause harmful interference, and (2) this device must accept any interference received, including interference that may cause undesired operation.

FCC Caution: Any changes or modifications not expressly approved by the party responsible for compliance could void the user's authority to operate this equipment.

IC Statement

This class [B] digital apparatus complies with Canadian ICES-003.

This device complies with RSS-210 and ICES-003 of the Industry Canada Rules. Operation is subject to the following two conditions: (1) This device may not cause harmful interference, and (2) This device must accept any interference received, including interference that may cause undesired operation of this device.

Cet appareil numérique de la classe [B] est conforme à la norme NMB-003 du Canada.

Le présent appareil est conforme aux CNR d'Industrie Canada applicables aux appareils radio exempts de licence.

L'exploitation est autorisée aux deux conditions suivantes: (1) l'appareil ne doit pas produire de brouillage, et (2)

l'utilisateur de l'appareil doit accepter tout brouillage radioélectrique subi, même si le brouillage est susceptible

d'en compromettre le fonctionnement.

Limited Warranty

Envisacor Guarantees that every wireless Smoke Sensor is free from physical defects in material and workmanship under normal usage for one year from the date of purchase. If the product proves defective during this one-year warranty period,

Envisacor will replace it free of charge. Envisacor does not issue any refunds. This warranty is extended to the original end user purchase only and is not transferable. This warranty does not apply to: (1) damage to units caused by accident, dropping or abuse in handling, or any negligent usage; (2) units which have been repaired, taken apart, or modified by an authorized personnel; (3) units not used in accordance with instruction; (4) damages exceeding the cost of the product; (5) transit damage, initial installation costs, removal cost, or reinstallation cost.

6B1H-61UC3 –V01



Installation & Operation Manual

HS6101

Wireless Smoke Sensor

