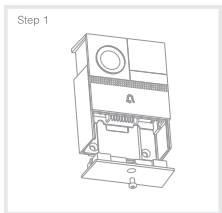
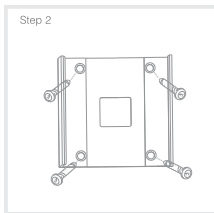


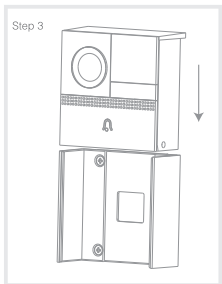
Install the device in battery-powered mode



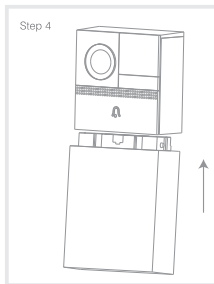
Step 1: Fix the bracket on the wall



Step 2: Disassemble the bottom of the doorbell as shown in the figure



Step 3: snap the doorbell into the bracket



Step 4: Align the battery box with the bayonet lock, and push the battery box into doorbell.

5

Set-Up

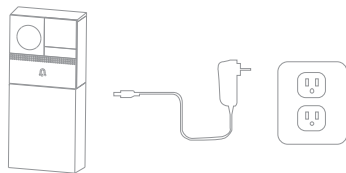
Plug in

Download the Clouledge App and install it on your smartphone, login after registering, and connect your phone to WiFi.



Add devices

The doorbell will get to sleep mode if no event happened, please press the doorbell button to wake up before you set it up in your app.



• Support



6

Functions

Remote wake-up

The doorbell will be in a sleep mode to save power; You can have a preview in app and have a remote wake-up to monitor after 3-4 Seconds.

Call

When the visitor push the doorbell button, you will get a call. You can see and hear the visitor in your app from the doorbell if you answer.

Jingle bell

Small bell installed in the room to remind visitors in real time. Please choose your own ringtone among the three ringtones.

PIR

When the doorbell detects someone stopping by, it sends an alarm message to your cell phone.

Event video

When the visitor rings the doorbell or triggers the human body detection function, the doorbell will carry out a 20s event recording, and you can view the video during playback.

Message

You can record a message lower than 30 seconds to play when someone come to visit but refuse to answer.

Power consumption management

User can carry out a power consumption saving mode in app setting, only visitors come to press the doorbell then wake it up.

Battery Lock

After battery box connected, it will be locked immediately. User have to unlock the battery box in the app setting page to if want to take out the battery box, only 30 seconds allowed.

Note: 433.92MHz

The bell management after the doorbell detects the button event, it sends the visitor button message to the indoor bell device through 433MHz frequency, and the bell device will ring automatically after receiving the message. This event can be triggered multiple times. Bell devices offer several different ring tones to choose from. Factory use default ring tone, support user Settings.

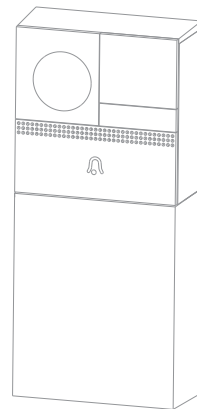
7

Bell 1C

ORIGINALITY DESIGN SMART - AND BEAUTIFUL



QUICK GUIDE



What's in the box

Consult the checklist below for all components.



PS-CMD-W01



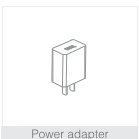
Mylar



USB cable



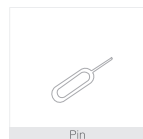
Battery box



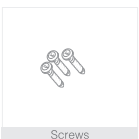
Power adapter



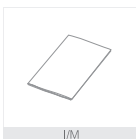
3M tape



Pin



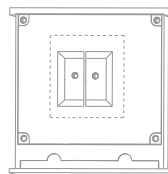
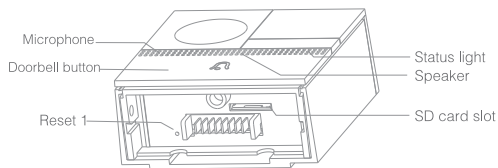
Screws



I/M



Wire nuts



Back of doorbell

Description

Doorbell button Press the button to activate the doorbell

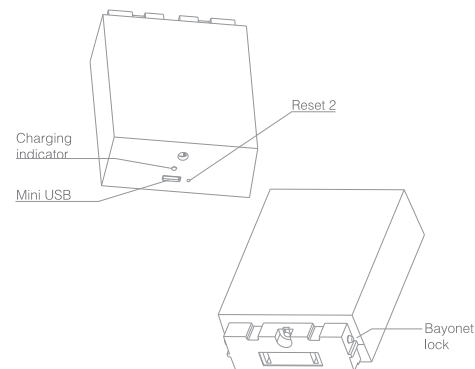
Status light

- Red light solid on: the camera network is abnormal
- Red light blinking: awaiting WiFi connection, or currently connecting (faster blinking)
- Blue light solid on: camera running correctly

Microphone Captures sound for your video

SD card slot Supports local SD Card storage (Max.128G)

Reset1 Press and hold on for 5 seconds with pin to reset the doorbell, (unable to unbind the bell from account)



Description

Charging indicator

- Red indicator solid on: battery is charging
- Blue indicator solid on: finishing charging

Reset 2 Tap reset button for 5 seconds to factory reset (it will not unbind the device)

Bayonet lock Lock the battery box through bayonet lock

FCC Statement

Any Changes or modifications not expressly approved by the party responsible for compliance could void the user's authority to operate the equipment.

This device complies with part 15 of the FCC Rules. Operation is subject to the following two conditions:

- (1) This device may not cause harmful interference, and
- (2) This device must accept any interference received, including interference that may cause undesired operation.

FCC Radiation Exposure Statement:

This equipment complies with FCC radiation exposure limits set forth for an uncontrolled environment .This equipment should be installed and operated with minimum distance 20cm between the radiator& your body.

IMPORTANT NOTE:

Note: This equipment has been tested and found to comply with the limits for a Class B digital device, pursuant to part 15 of the FCC Rules. These limits are designed to provide reasonable protection against harmful interference in a residential installation. This equipment generates, uses and can radiate radio frequency energy and, if not installed and used in accordance with the instructions, may cause harmful interference to radio communications. However, there is no guarantee that interference will not occur in a particular installation. If this equipment does cause harmful interference to radio or television reception, which can be determined by turning the equipment off and on, the user is encouraged to try to correct the interference by one or more of the following measures:

—Reorient or relocate the receiving antenna.

—Increase the separation between the equipment and receiver.

—Connect the equipment into an outlet on a circuit different from that to which the receiver is connected.

—Consult the dealer or an experienced radio/TV technician for help.