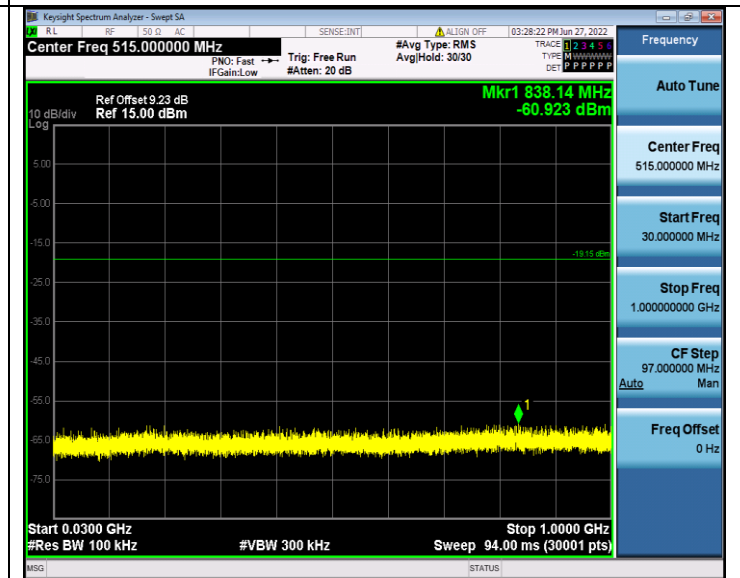
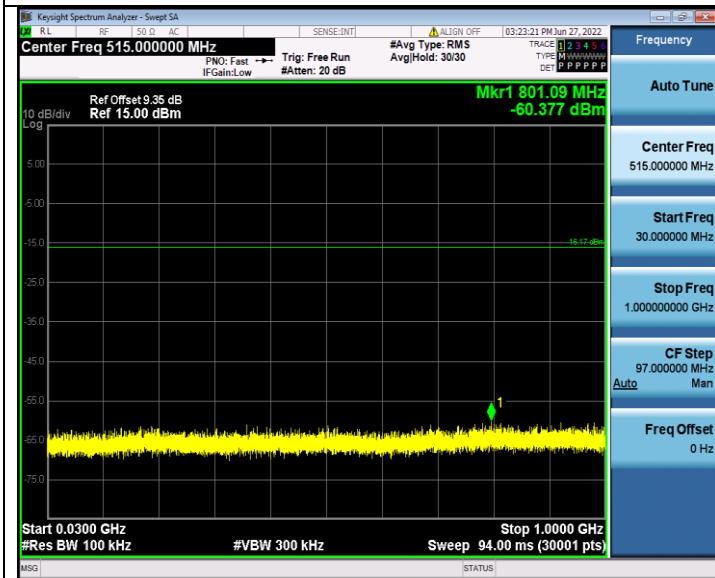


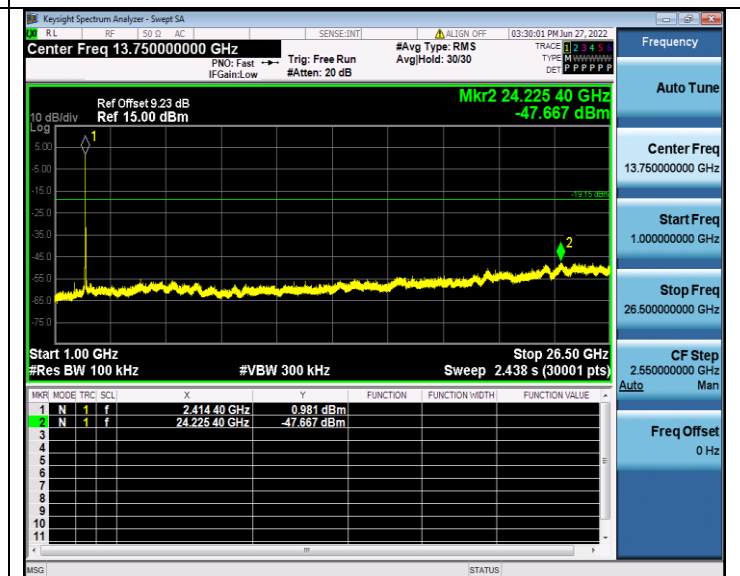
CH11

CH01



30MHz-1GHz

30MHz-1GHz



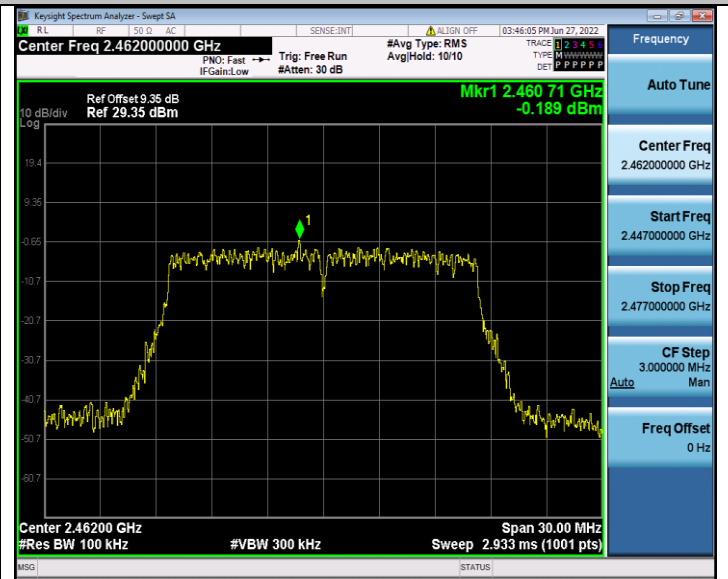
1GHz-26.5GHz

1GHz-26.5GHz

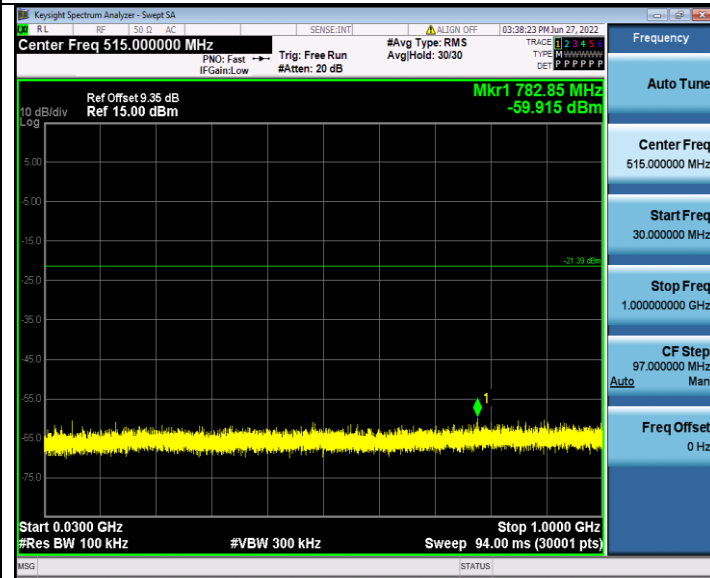
802.11g



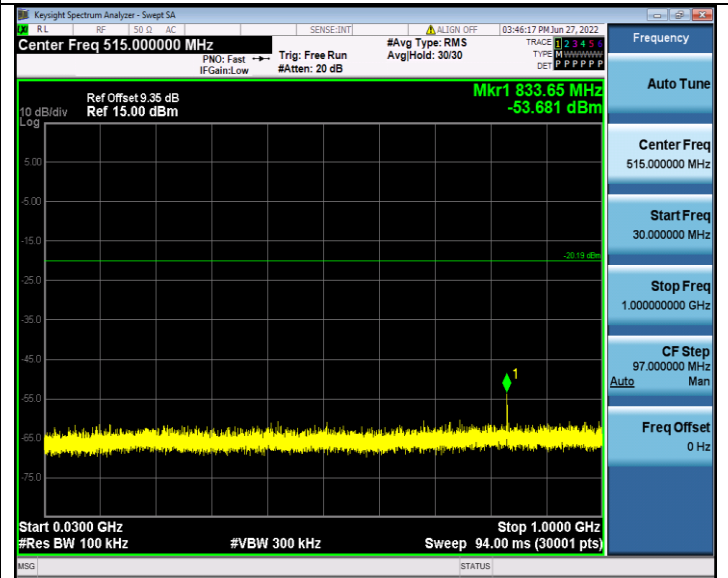
CH06



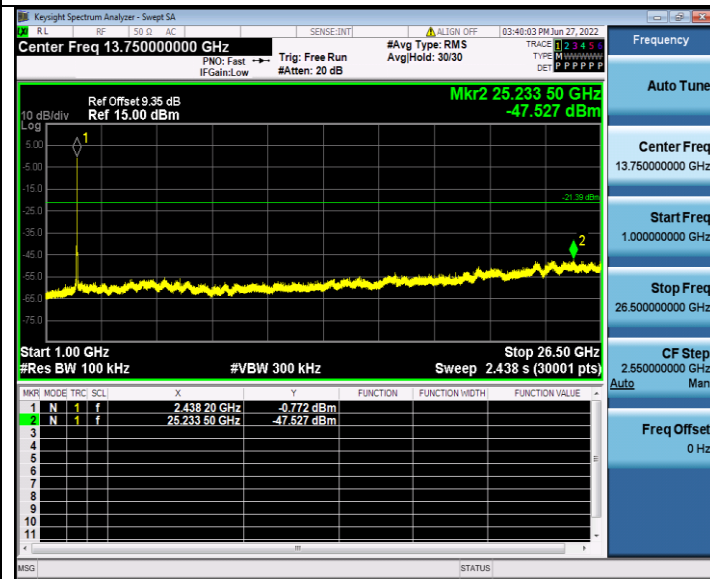
CH11



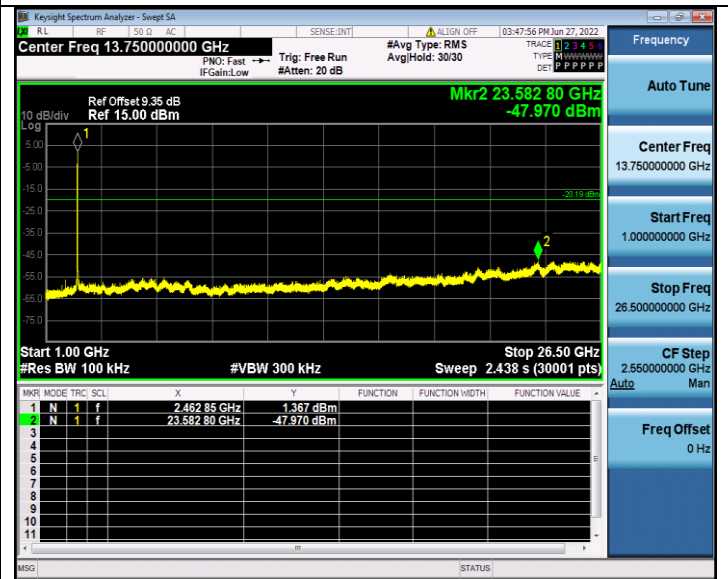
30MHz-1GHz



30MHz-1GHz



1GHz-26.5GHz



1GHz-26.5GHz

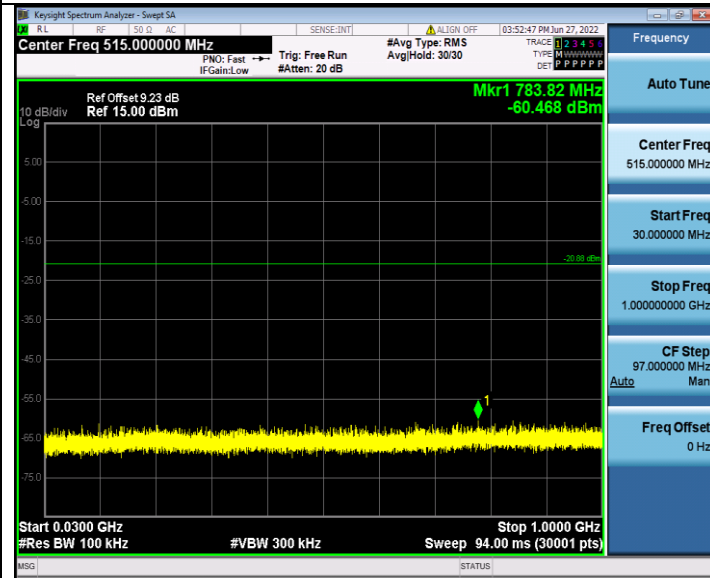
802.11n HT20



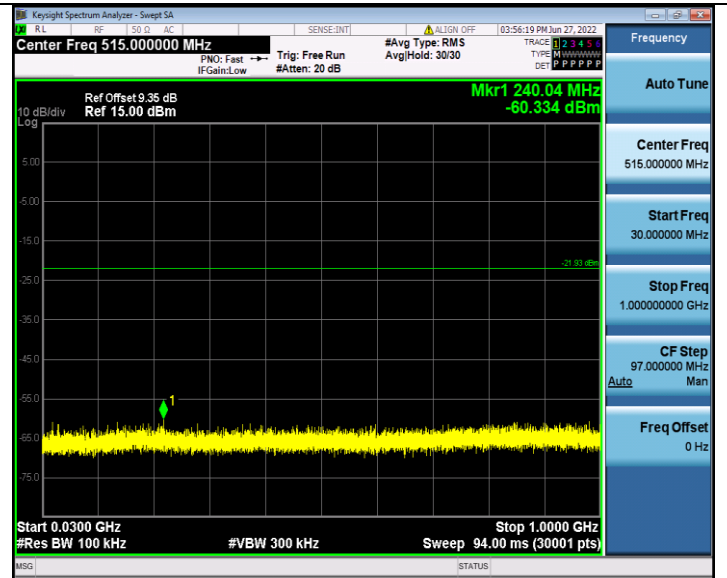
CH01



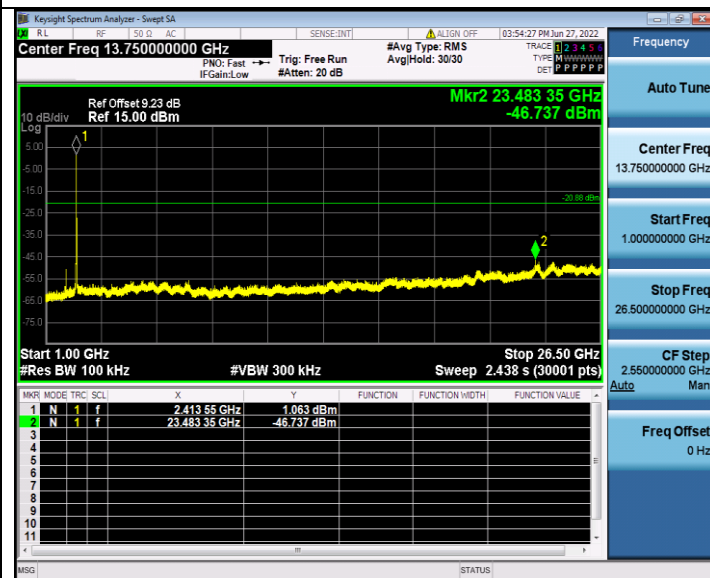
CH06



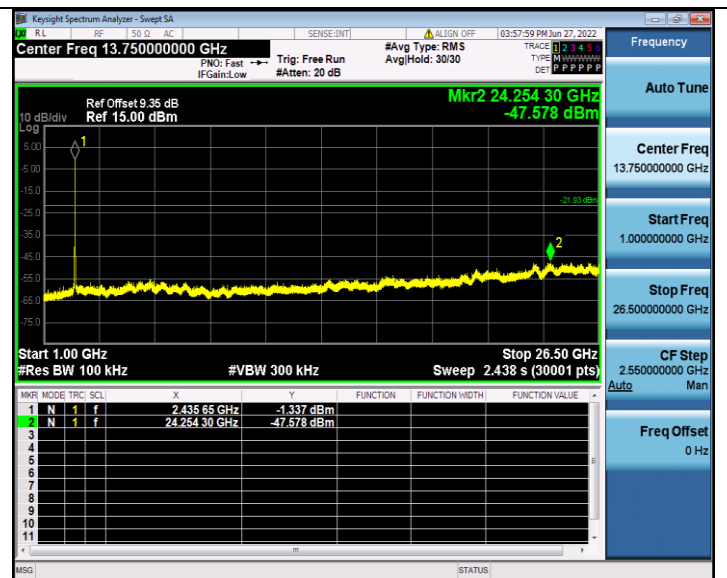
30MHz-1GHz



30MHz-1GHz



1GHz-26.5GHz



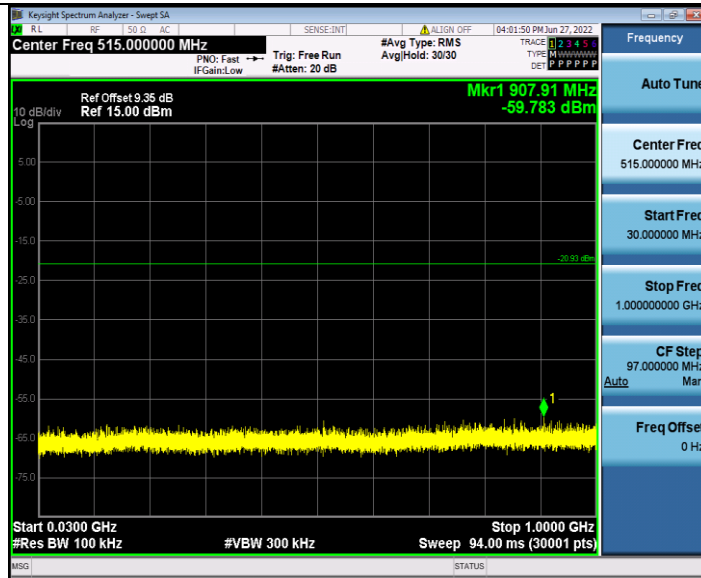
1GHz-26.5GHz

802.11n HT20



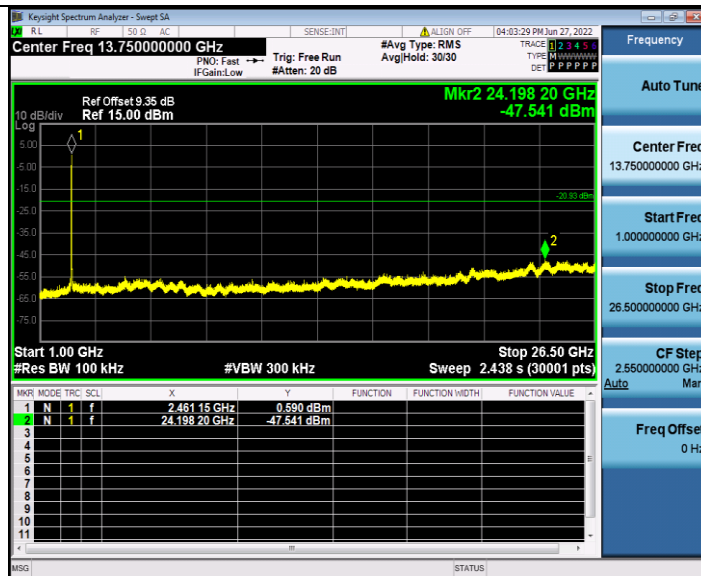
Frequency
Auto Tune
Center Freq 2.46200000 GHz
Start Freq 2.447000000 GHz
Stop Freq 2.477000000 GHz
CF Step 3.000000 MHz Auto Man
Freq Offset 0 Hz

CH11



Frequency
Auto Tune
Center Freq 515.000000 MHz
Start Freq 30.000000 MHz
Stop Freq 1.000000000 GHz
CF Step 97.000000 MHz Auto Man
Freq Offset 0 Hz

30MHz-1GHz



Frequency
Auto Tune
Center Freq 13.75000000 GHz
Start Freq 1.000000000 GHz
Stop Freq 26.500000000 GHz
CF Step 2.550000000 GHz Auto Man
Freq Offset 0 Hz

1GHz-26.5GHz

4.7. Antenna Requirement

Standard Applicable

For intentional device, according to FCC 47 CFR Section 15.203, an intentional radiator shall be designed to ensure that no antenna other than that furnished by the responsible party shall be used with the device.

And according to FCC 47 CFR Section 15.247 (c), if transmitting antennas of directional gain greater than 6dBi are used, the power shall be reduced by the amount in dB that the directional gain of the antenna exceeds 6dBi.

Antenna Information

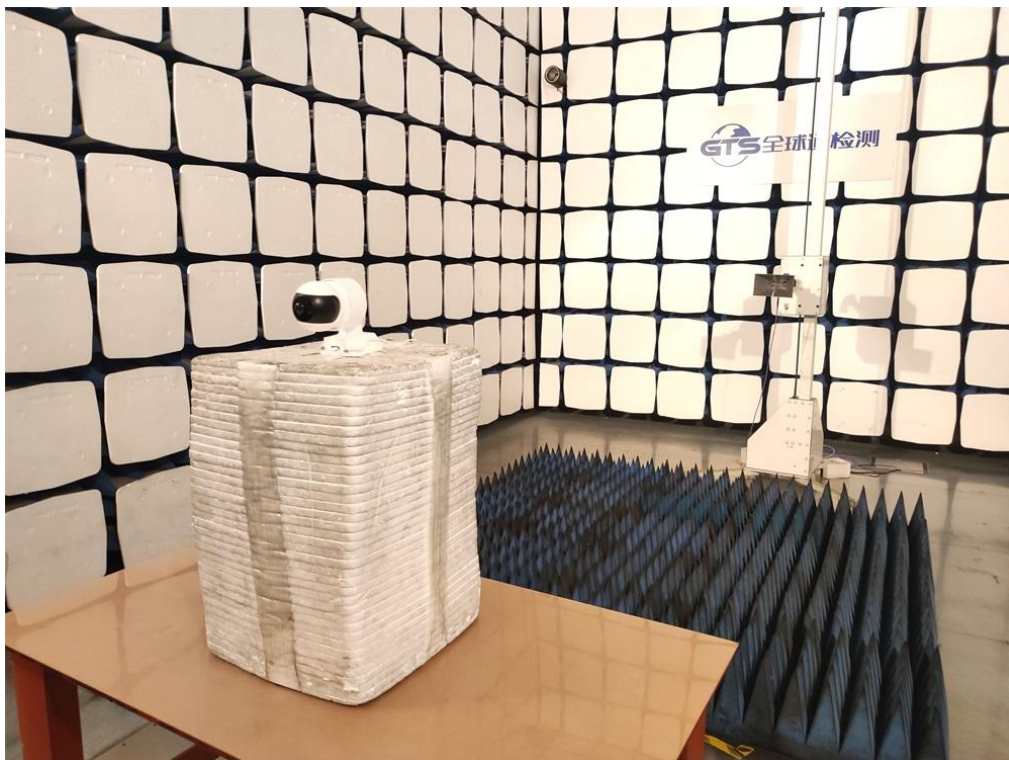
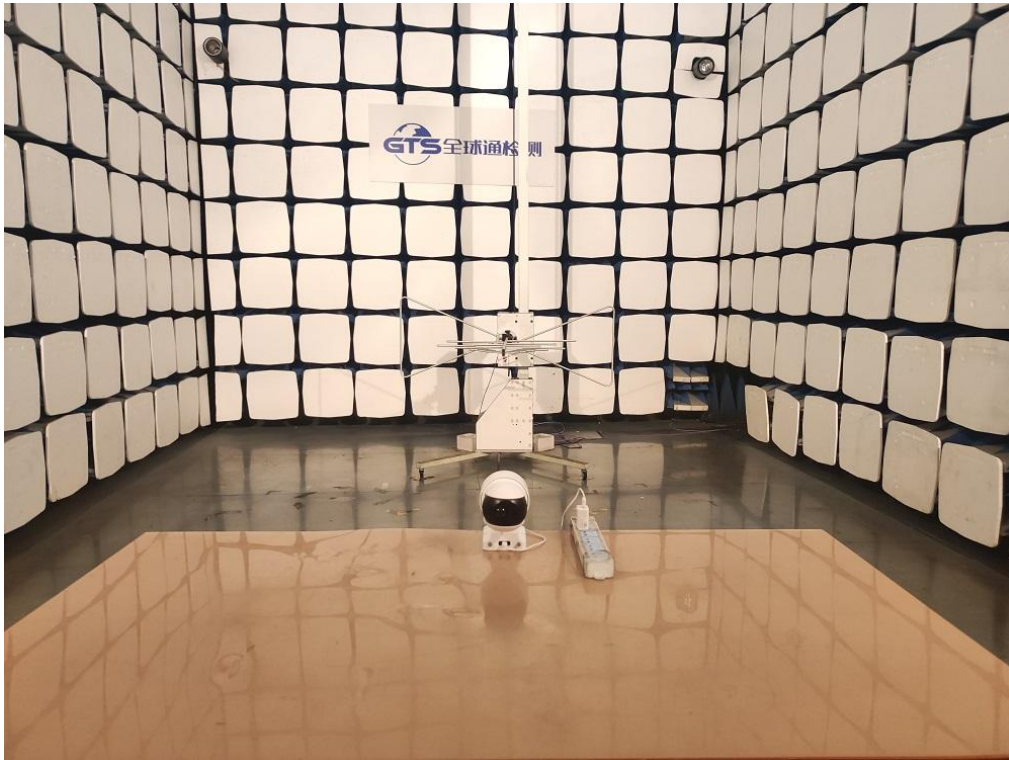
The antenna is FPC Aantenna, through the buckle stretched out, The directional gains of antenna used for transmitting is 3.67dBi.

Reference to the **Internal photos**.

5. TEST SETUP PHOTOS OF THE EUT

Adapter: TPA-46B050100UU

Radiated Emission



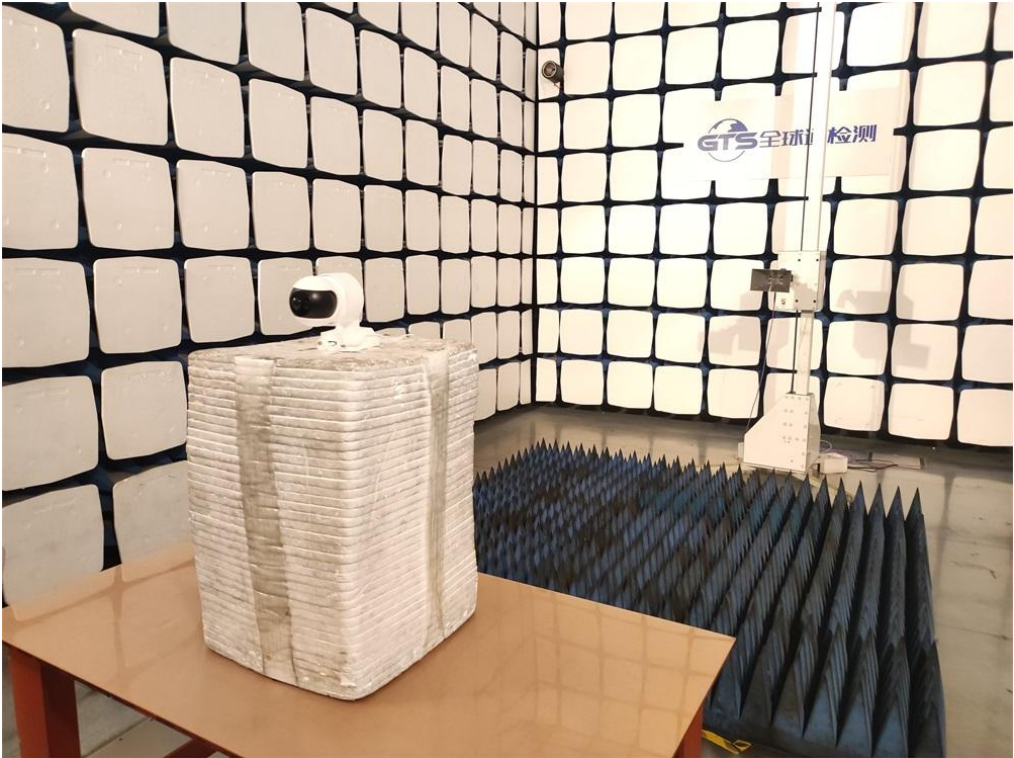
Conducted Emission



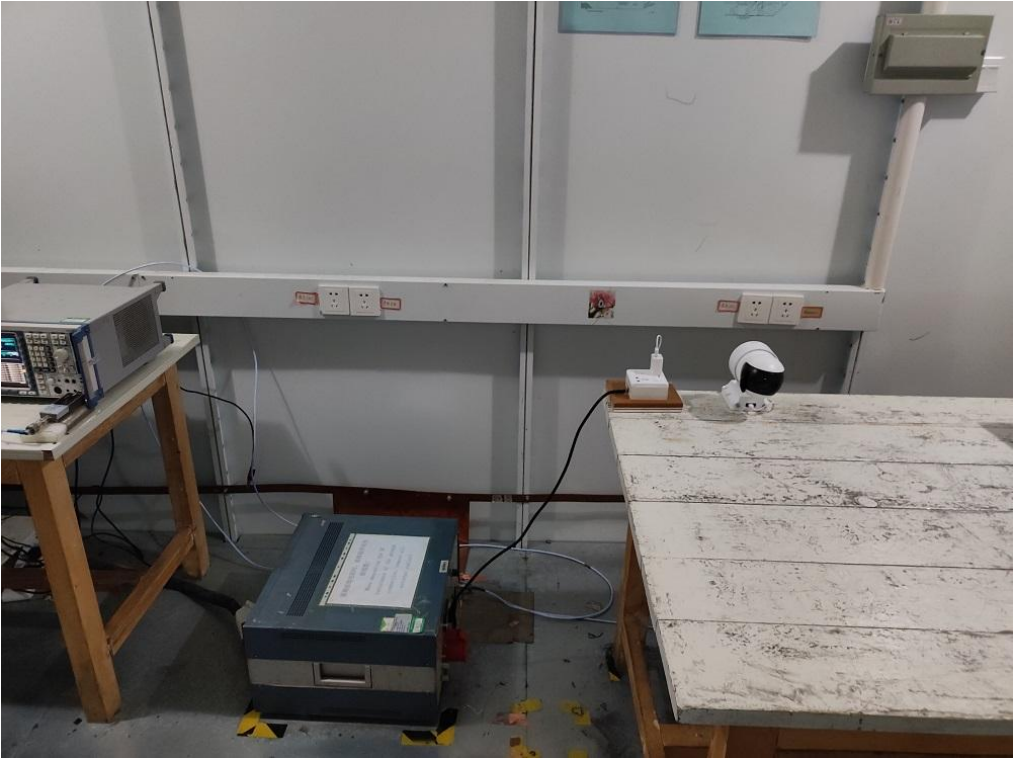
Adapter:DCT07W050100EU-C1

Radiated Emission





Conducted Emission



6. EXTERNAL AND INTERNAL PHOTOS OF THE EUT

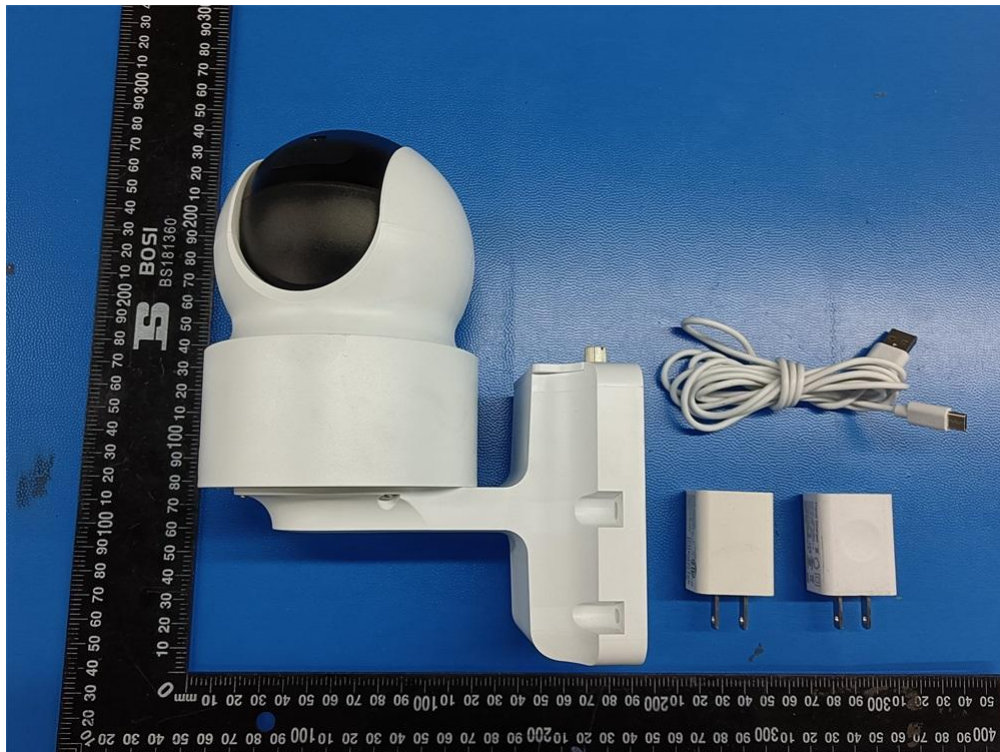


Fig. 1



Fig. 2



Fig. 3

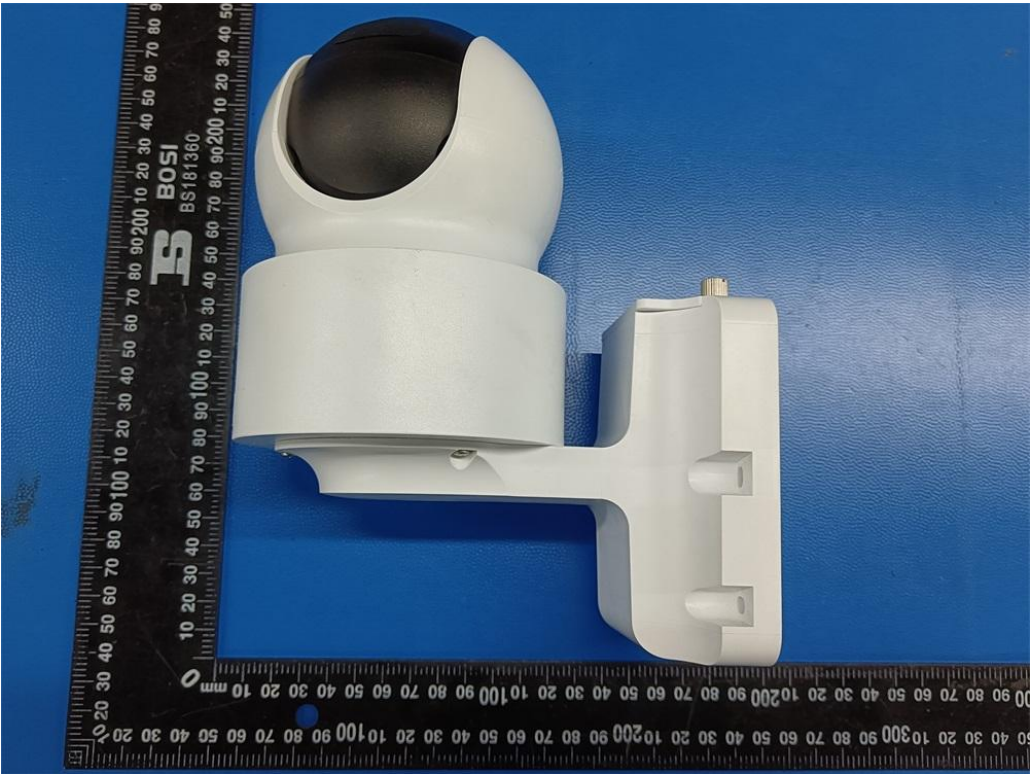


Fig. 4



Fig. 5

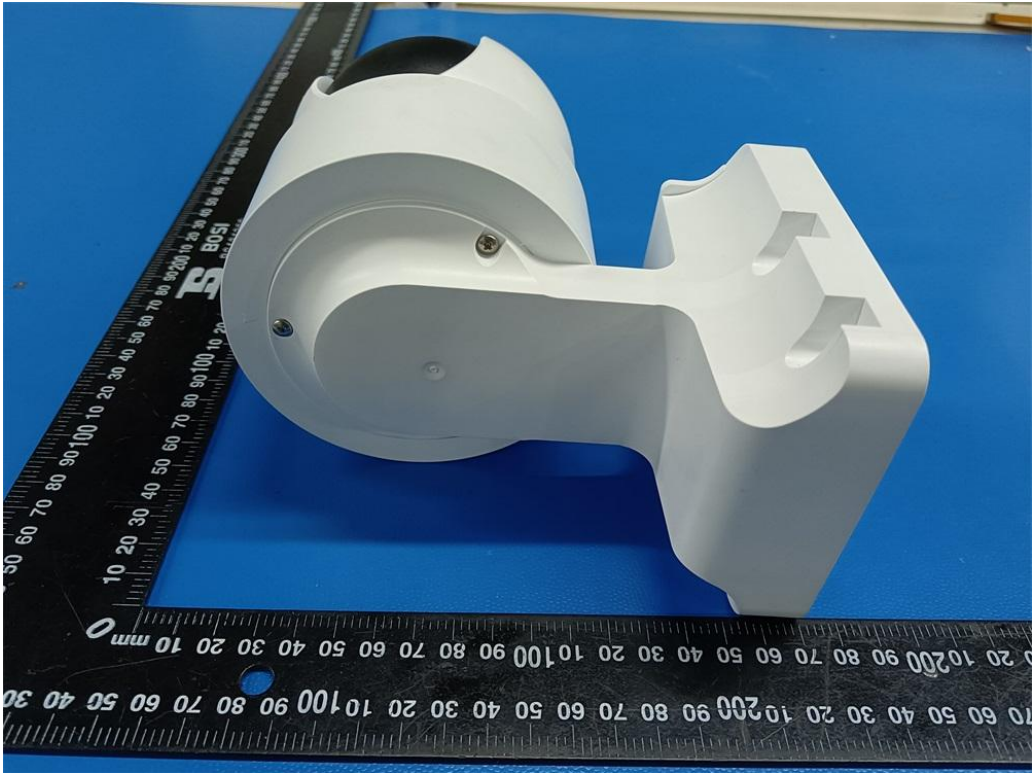


Fig. 6

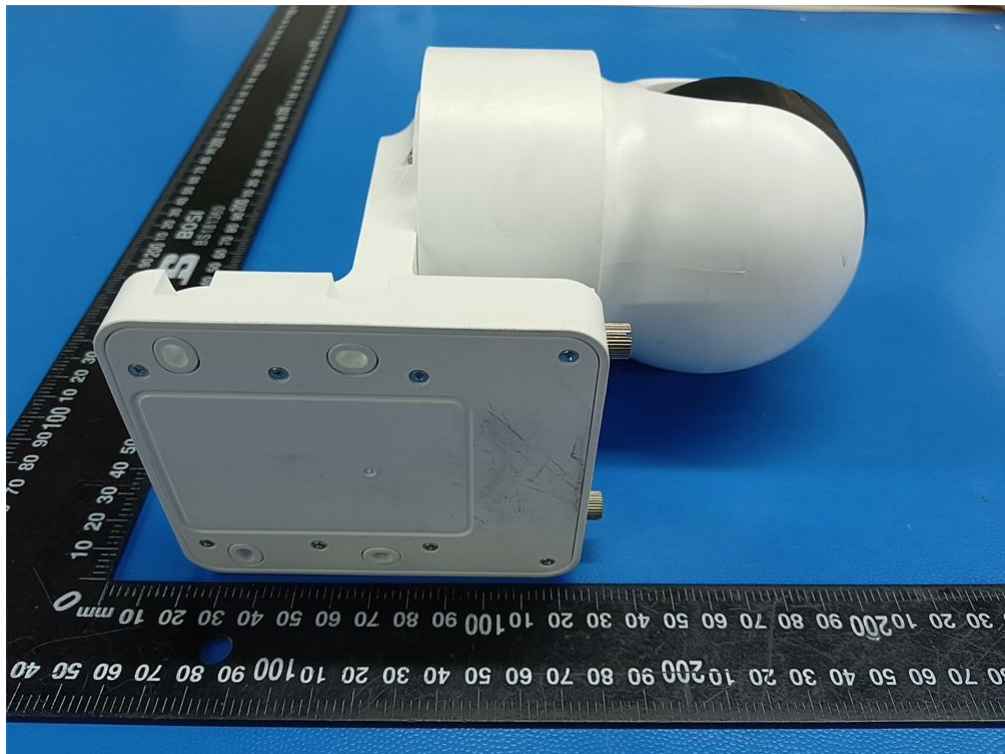


Fig. 7

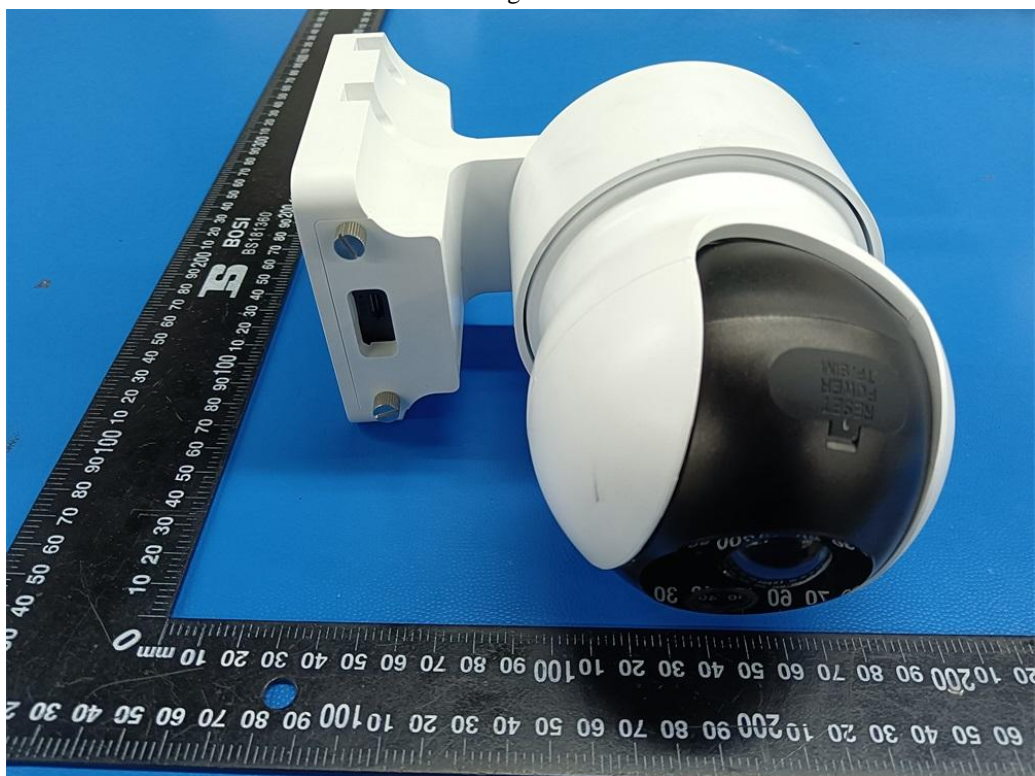


Fig. 8

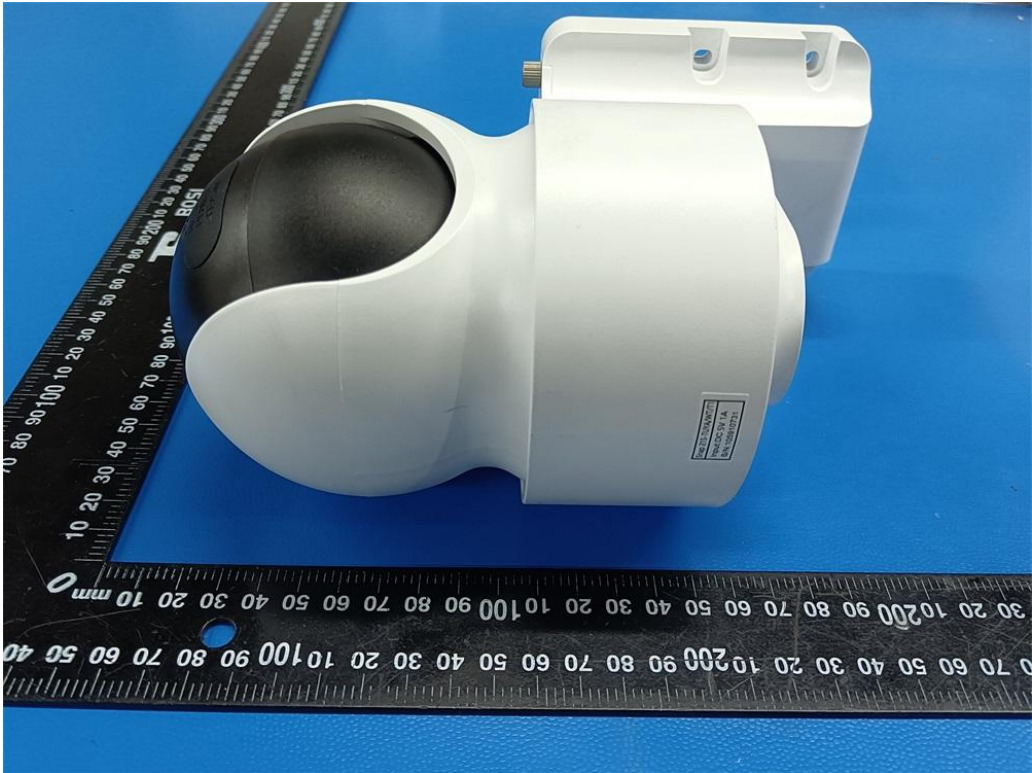


Fig. 9

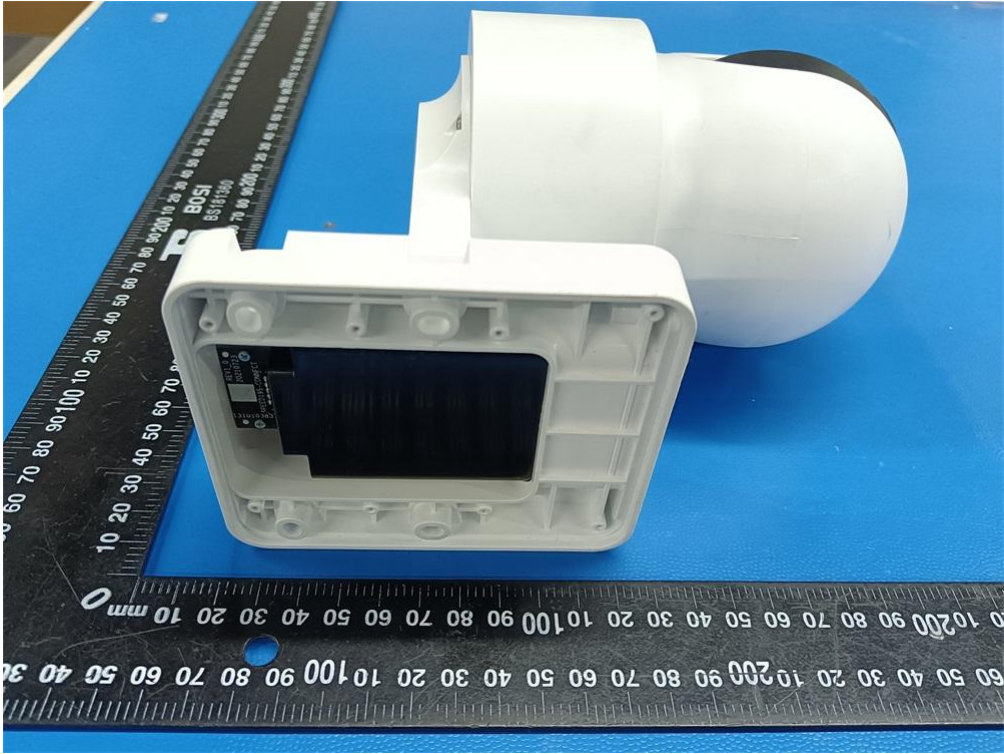


Fig. 10

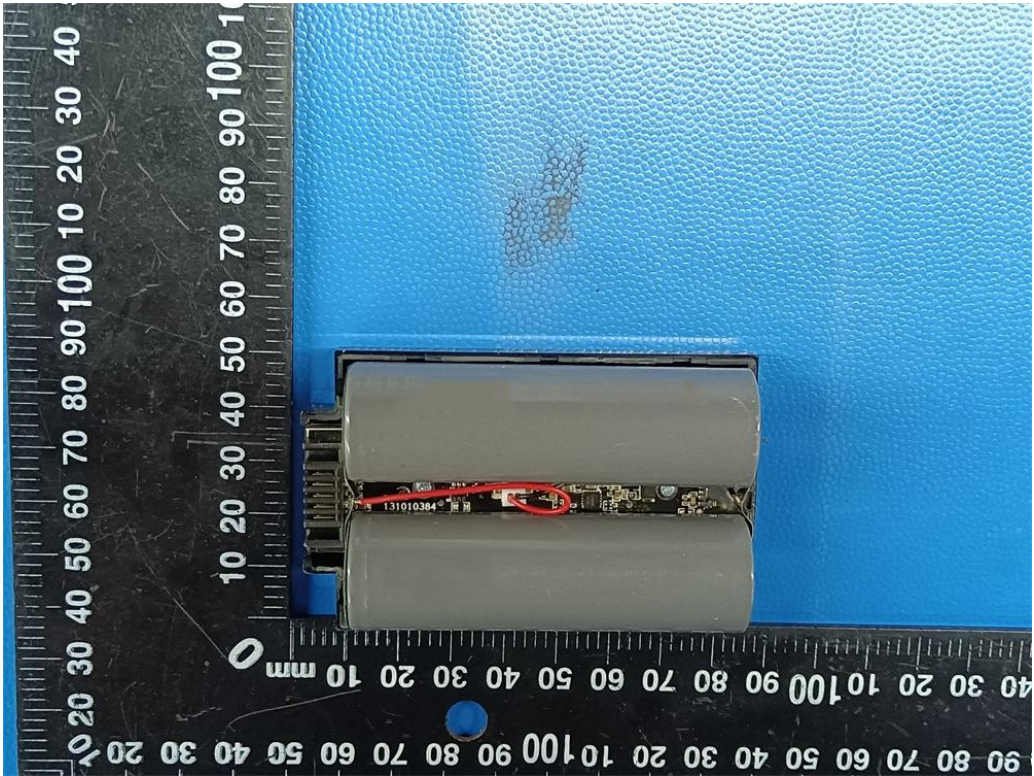


Fig. 11



Fig. 12

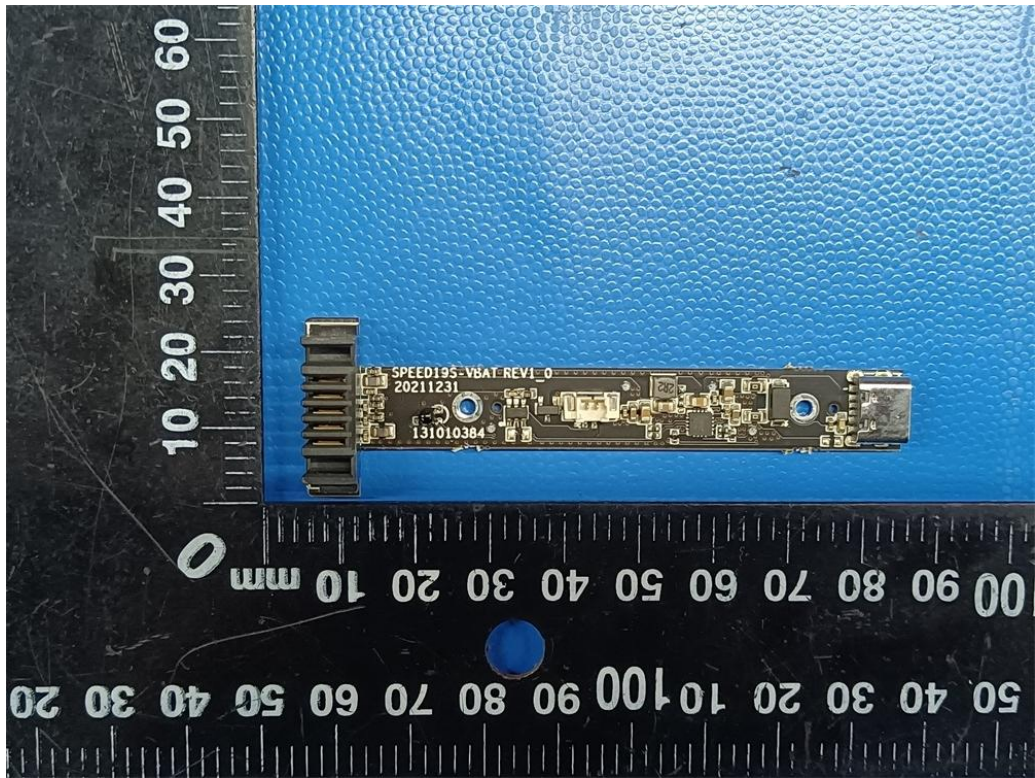


Fig. 13

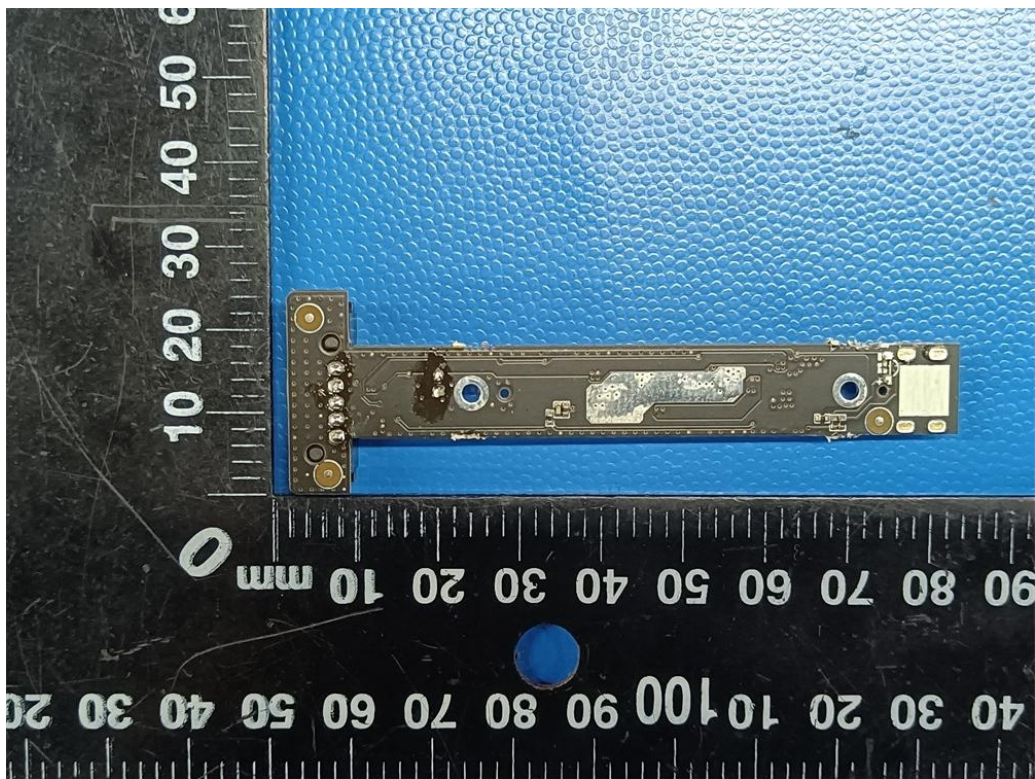


Fig. 14



Fig. 15

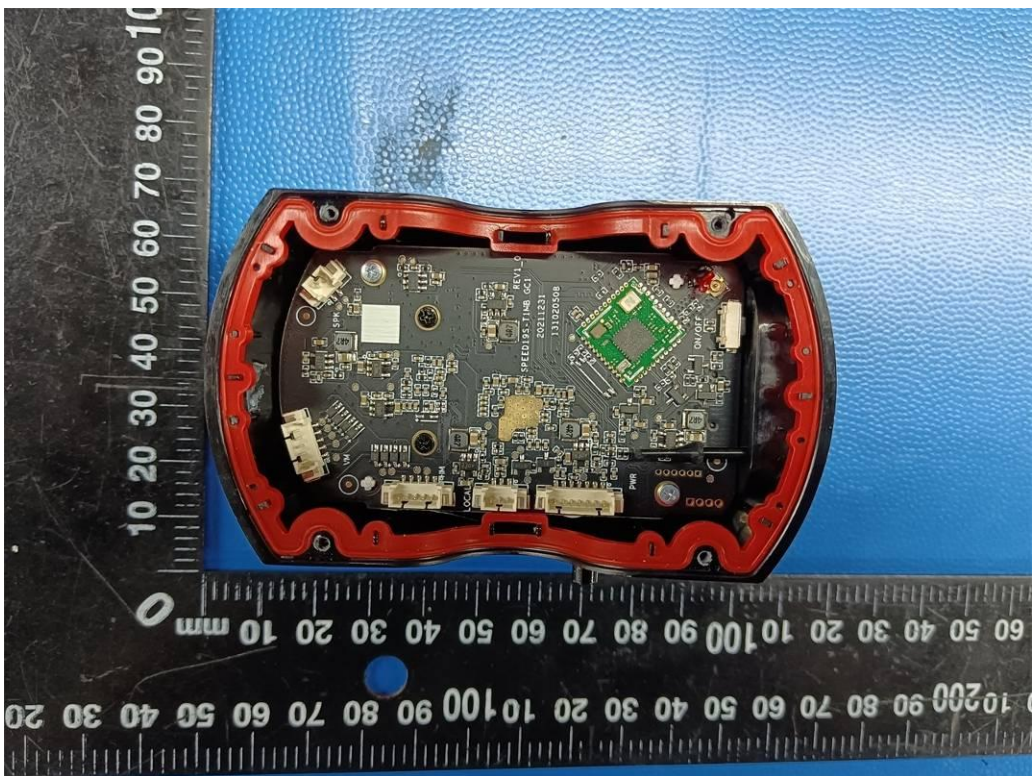


Fig. 16

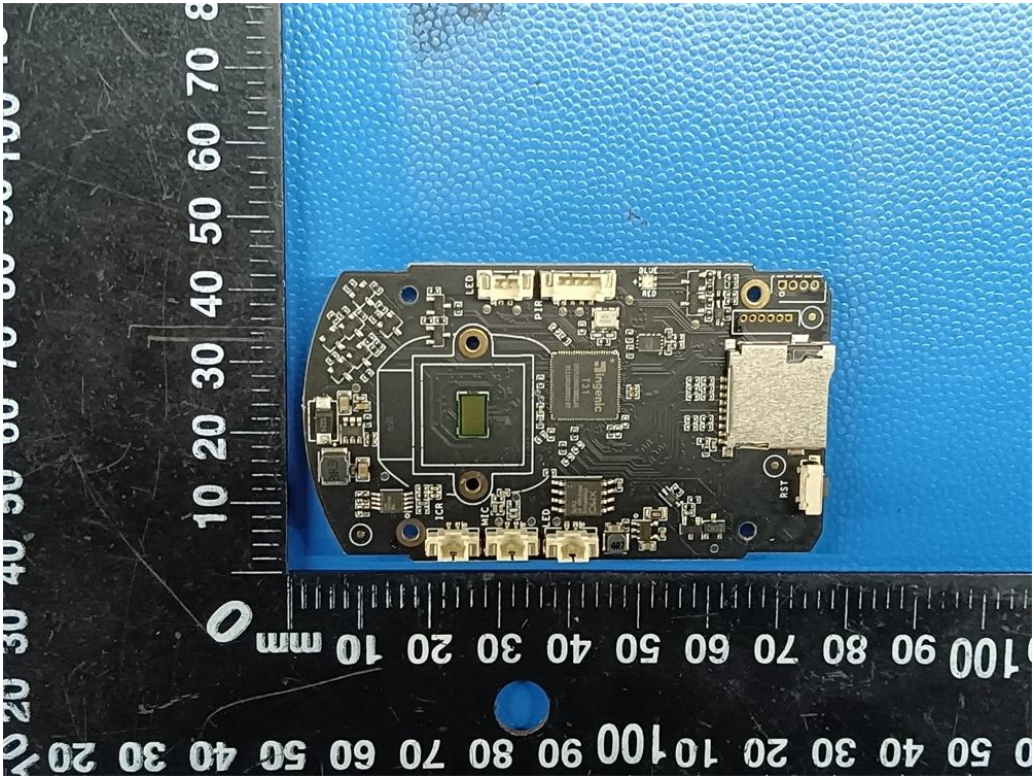


Fig. 17

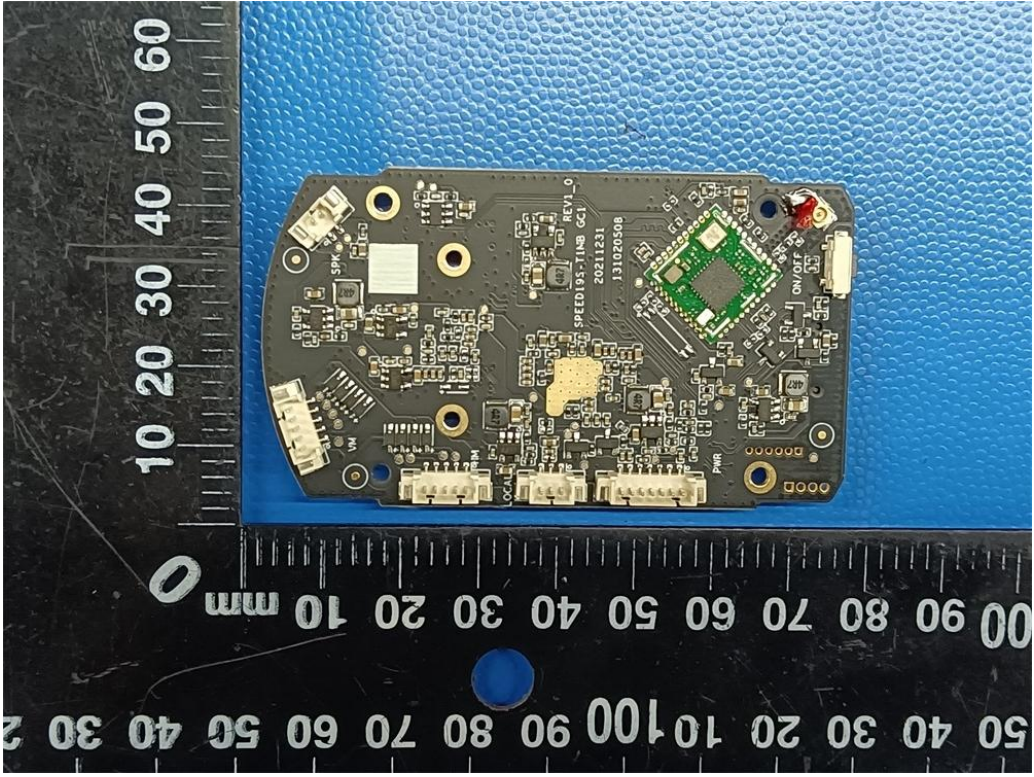


Fig. 18

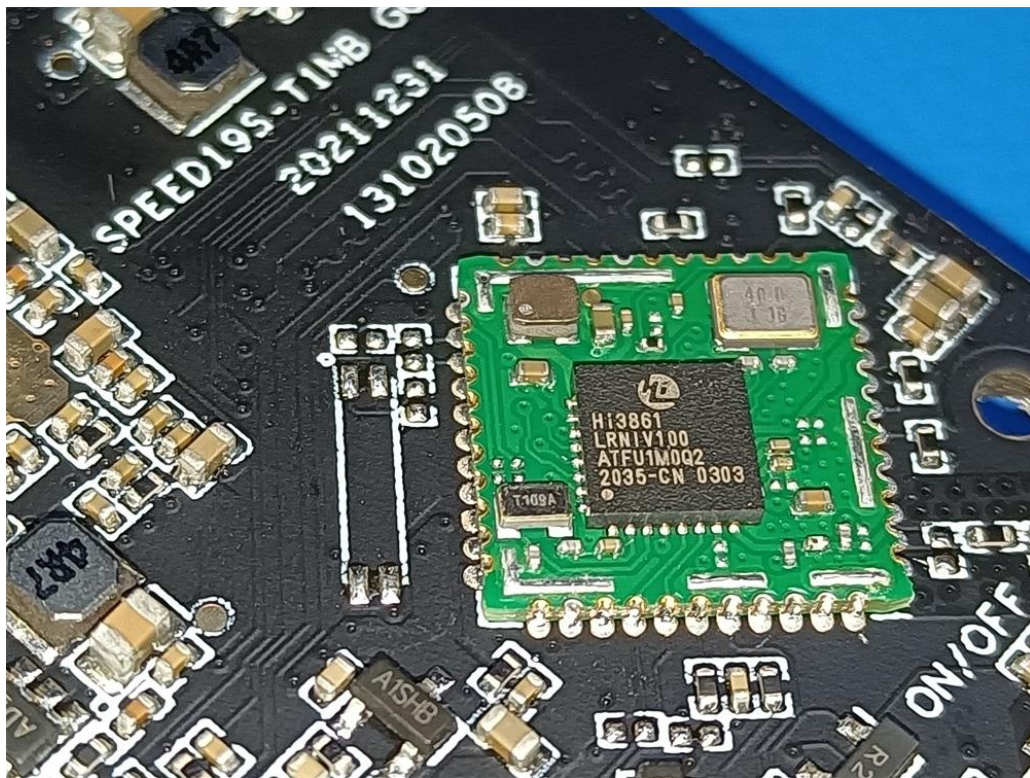


Fig. 19

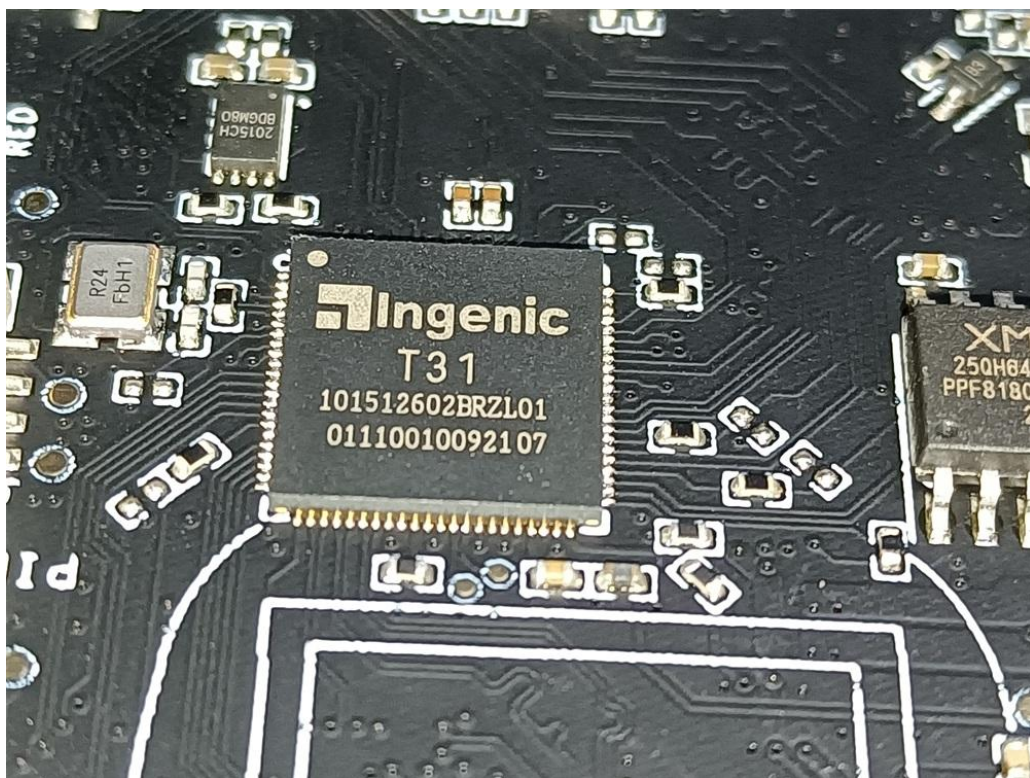


Fig. 20

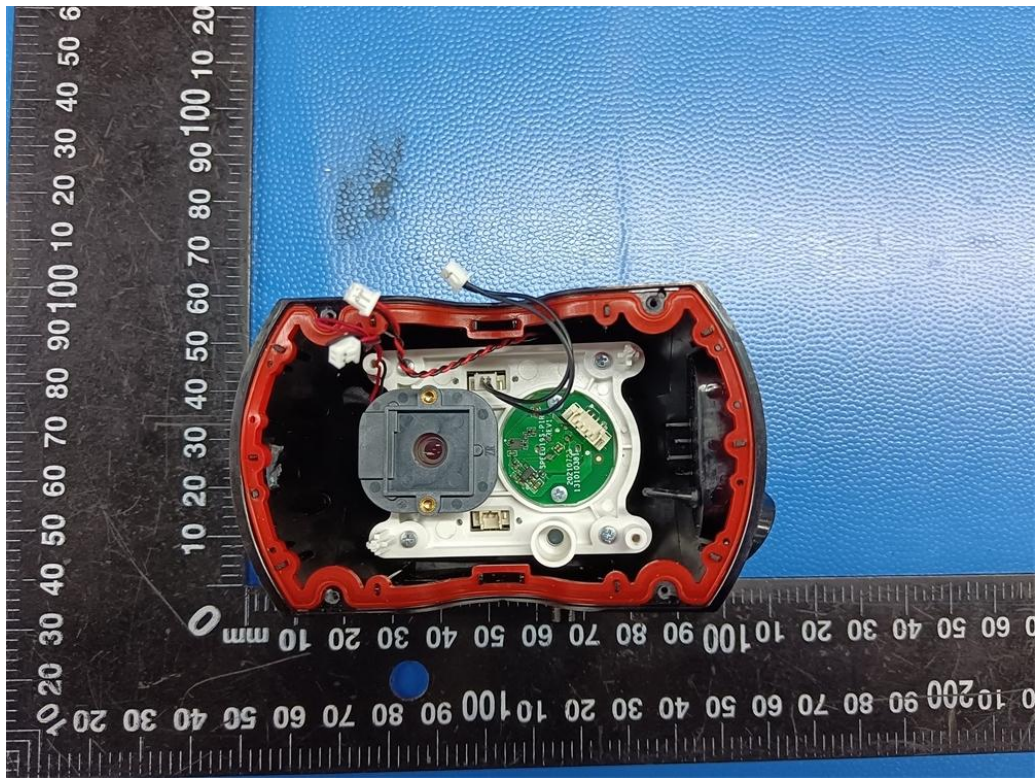


Fig. 21

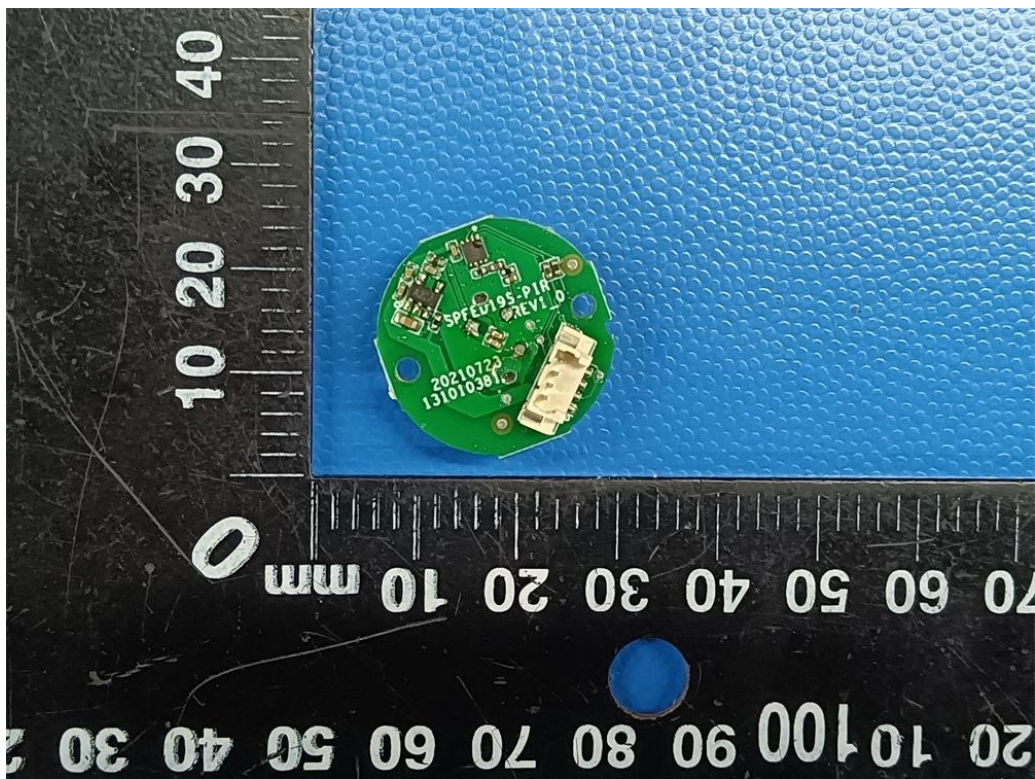


Fig. 22

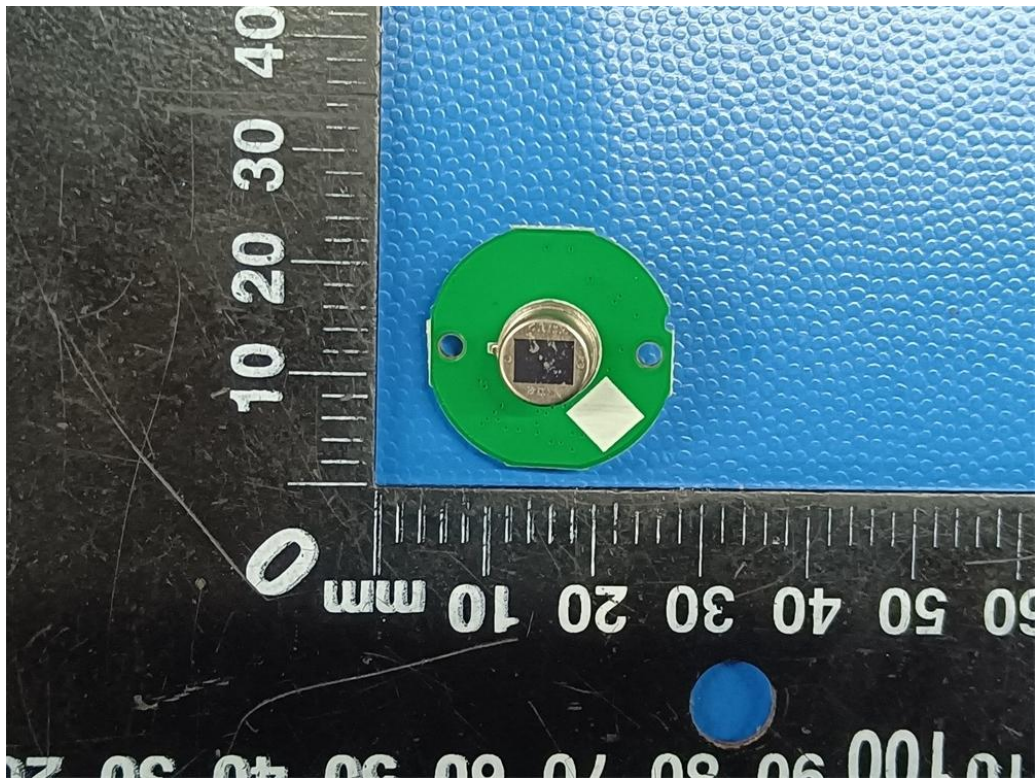


Fig. 23

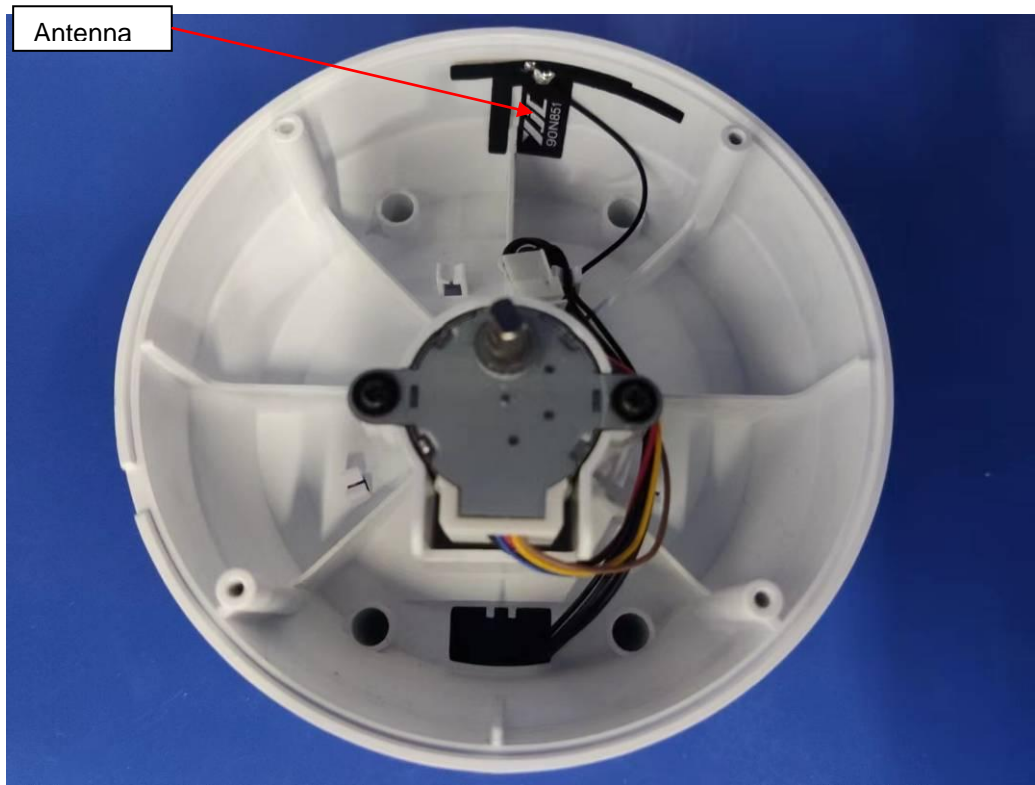


Fig. 24

.....End of Report.....