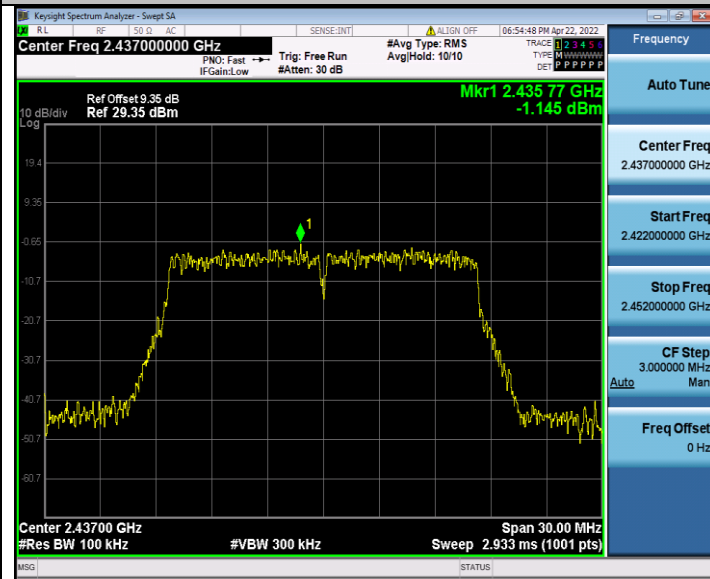
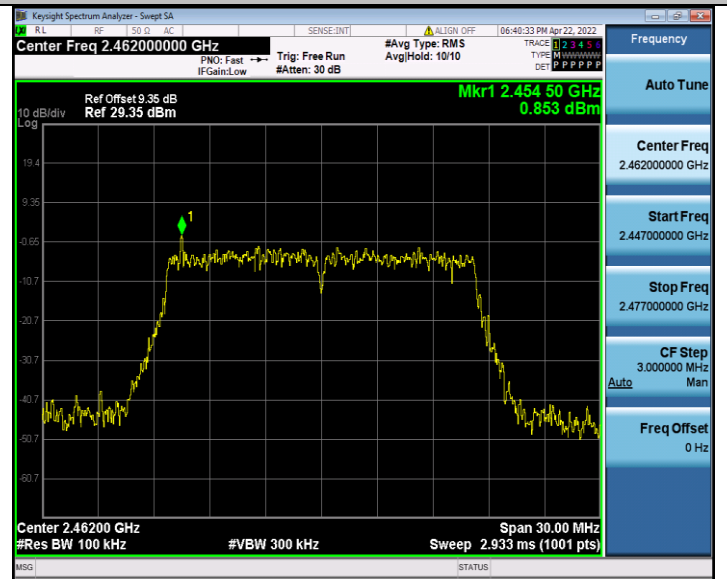


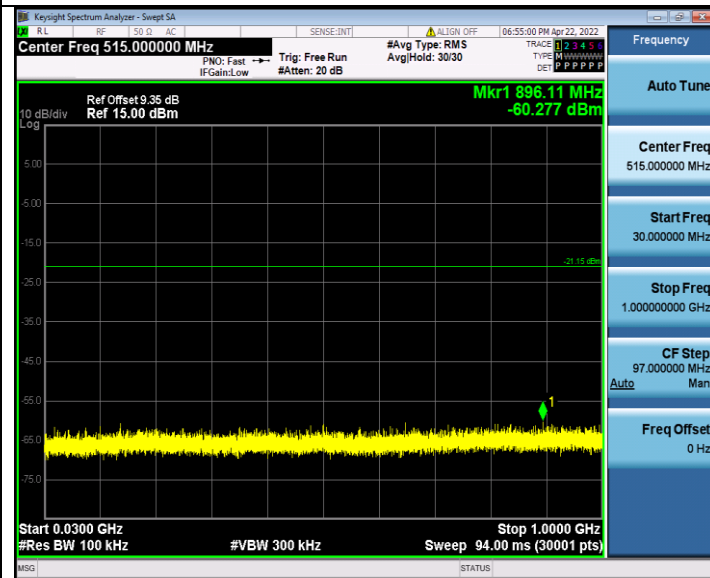
802.11g



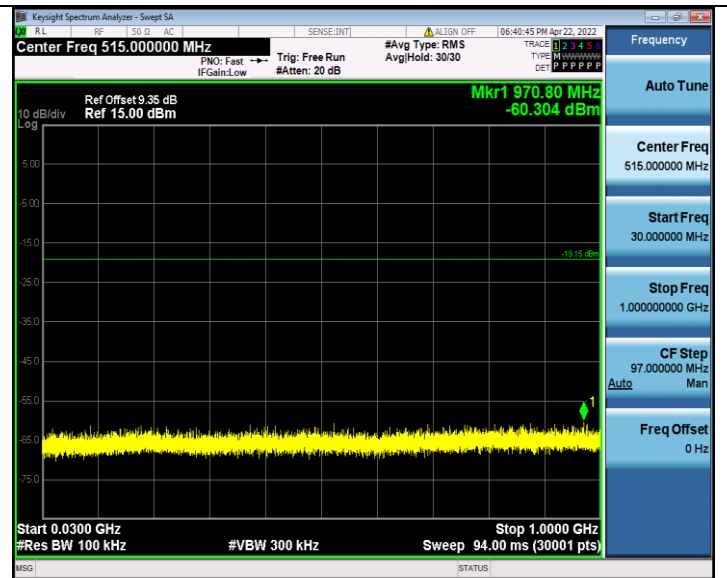
CH06



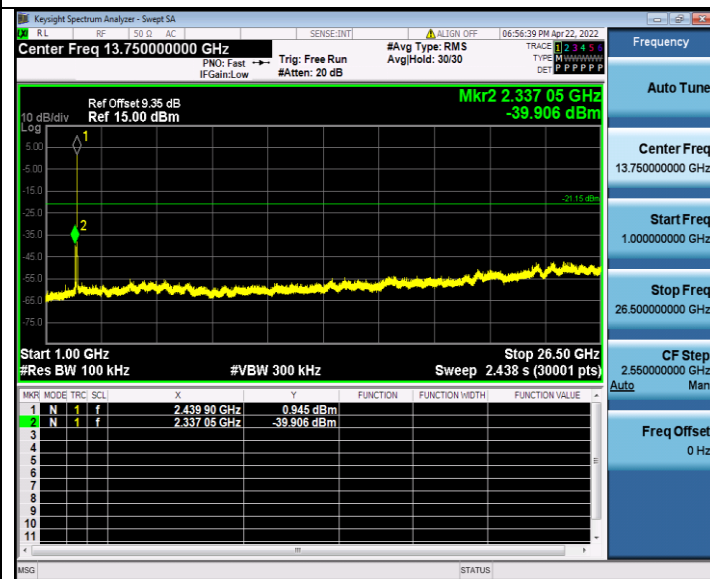
CH11



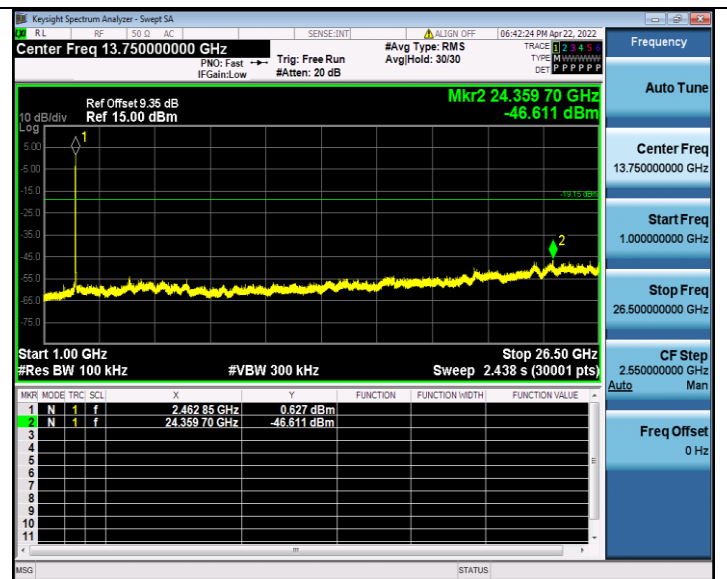
30MHz-1GHz



30MHz-1GHz



1GHz-26.5GHz



1GHz-26.5GHz

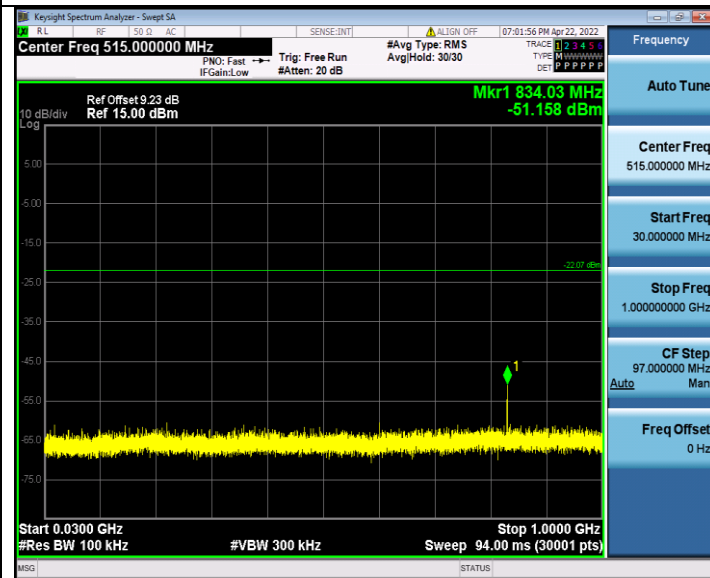
802.11n HT20



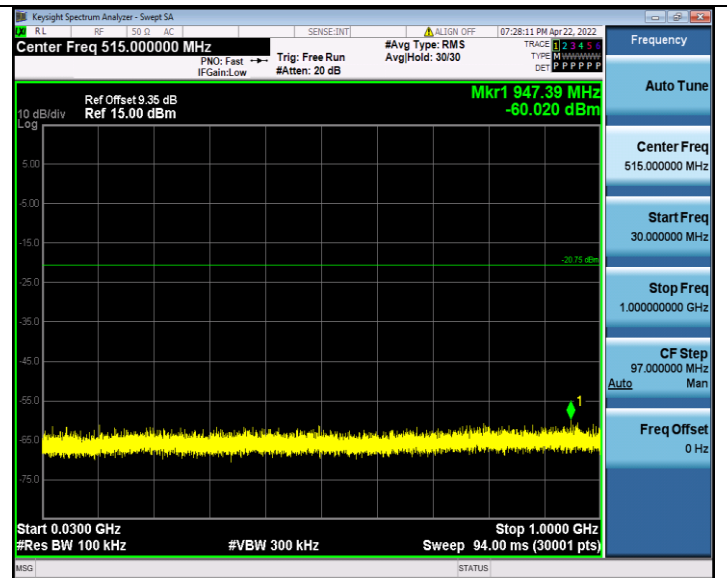
CH01



CH06



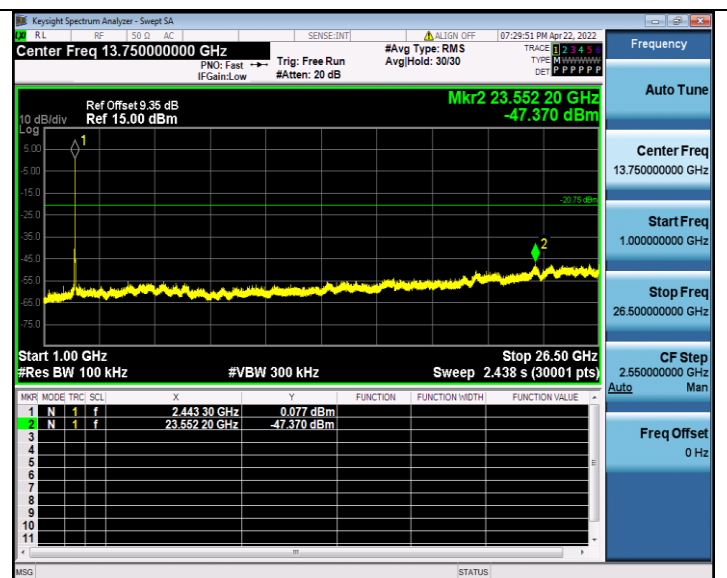
30MHz-1GHz



30MHz-1GHz



1GHz-26.5GHz

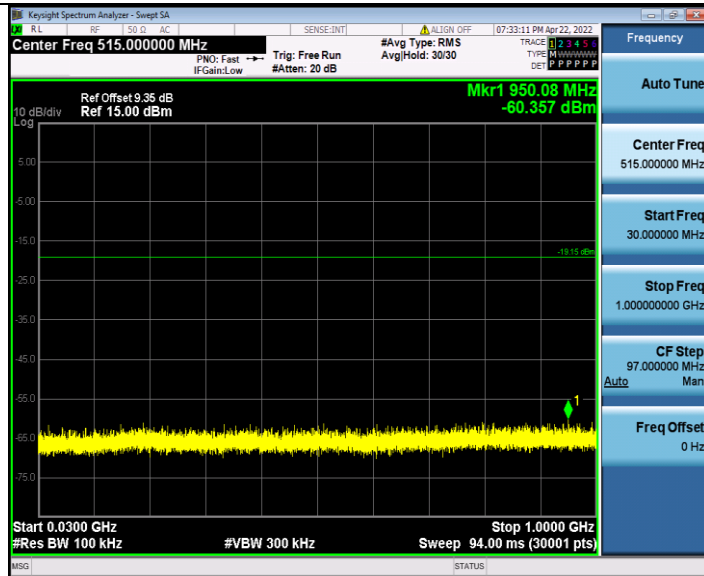


1GHz-26.5GHz

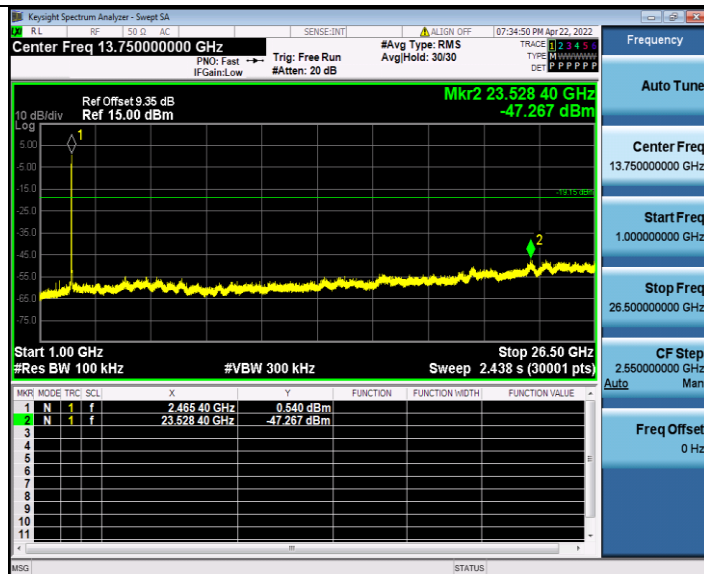
802.11n HT20



CH11



30MHz-1GHz



1GHz-26.5GHz

## 4.7. Antenna Requirement

### Standard Applicable

For intentional device, according to FCC 47 CFR Section 15.203, an intentional radiator shall be designed to ensure that no antenna other than that furnished by the responsible party shall be used with the device.

And according to FCC 47 CFR Section 15.247 (c), if transmitting antennas of directional gain greater than 6dBi are used, the power shall be reduced by the amount in dB that the directional gain of the antenna exceeds 6dBi.

### **Antenna Information**

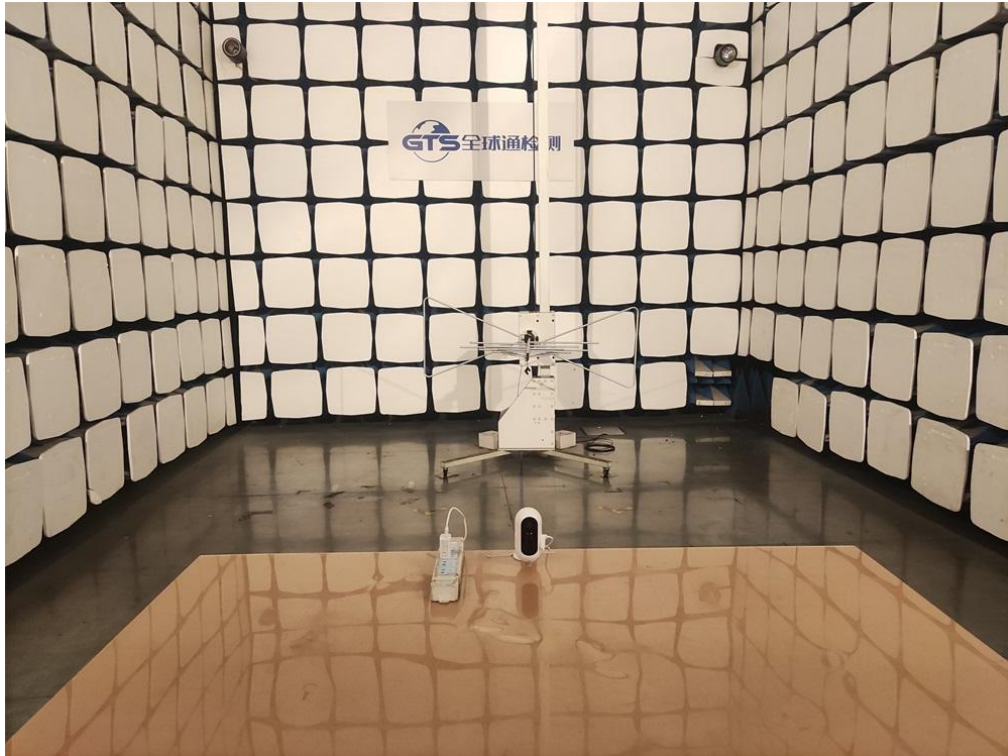
The antenna is On board Antenna, through the buckle stretched out, The directional gains of antenna used for transmitting is 2.09dBi.

Reference to the **Internal photos**.

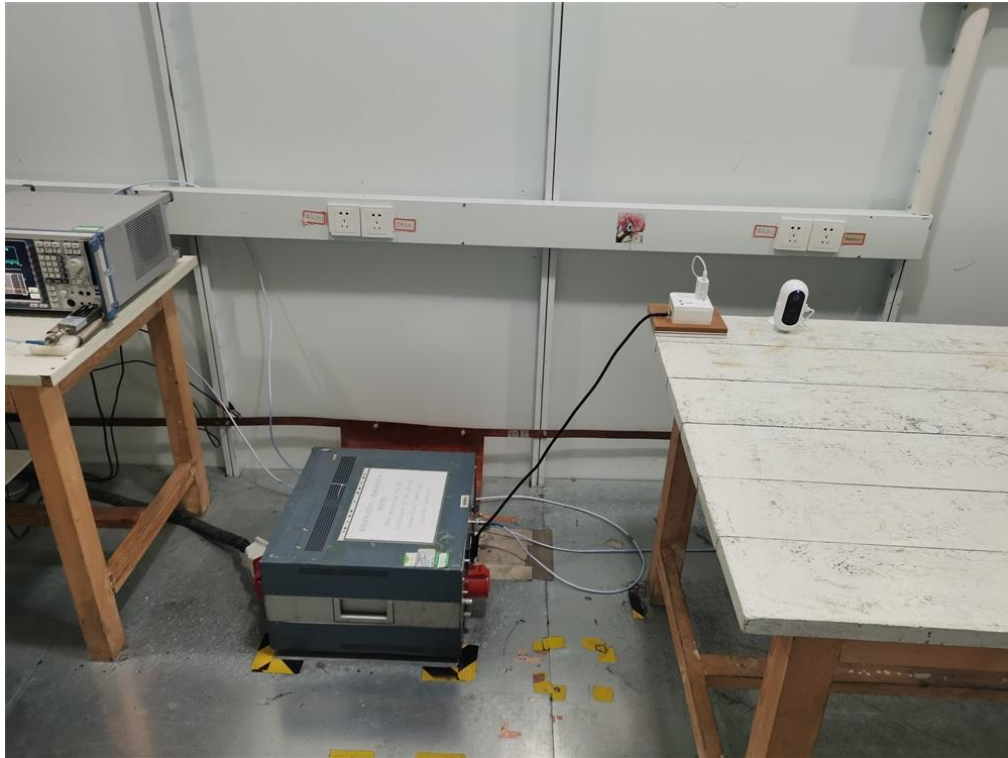
## 5. TEST SETUP PHOTOS OF THE EUT

Adapter: TPA-46B050100UU

Radiated Emission

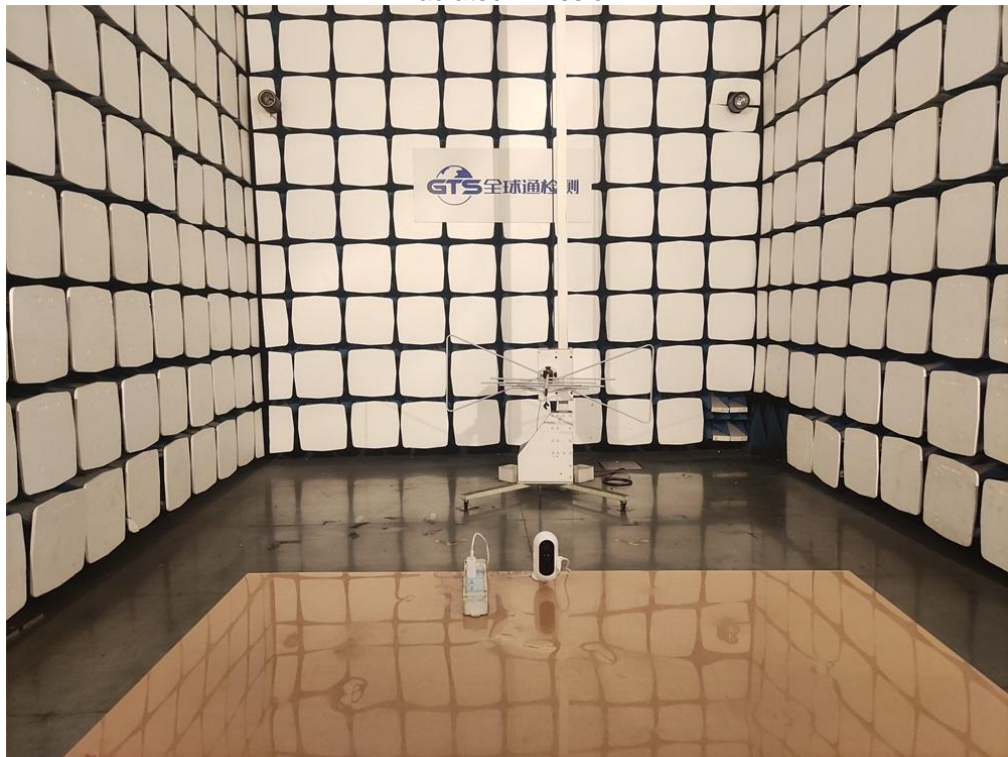


Conducted Emission



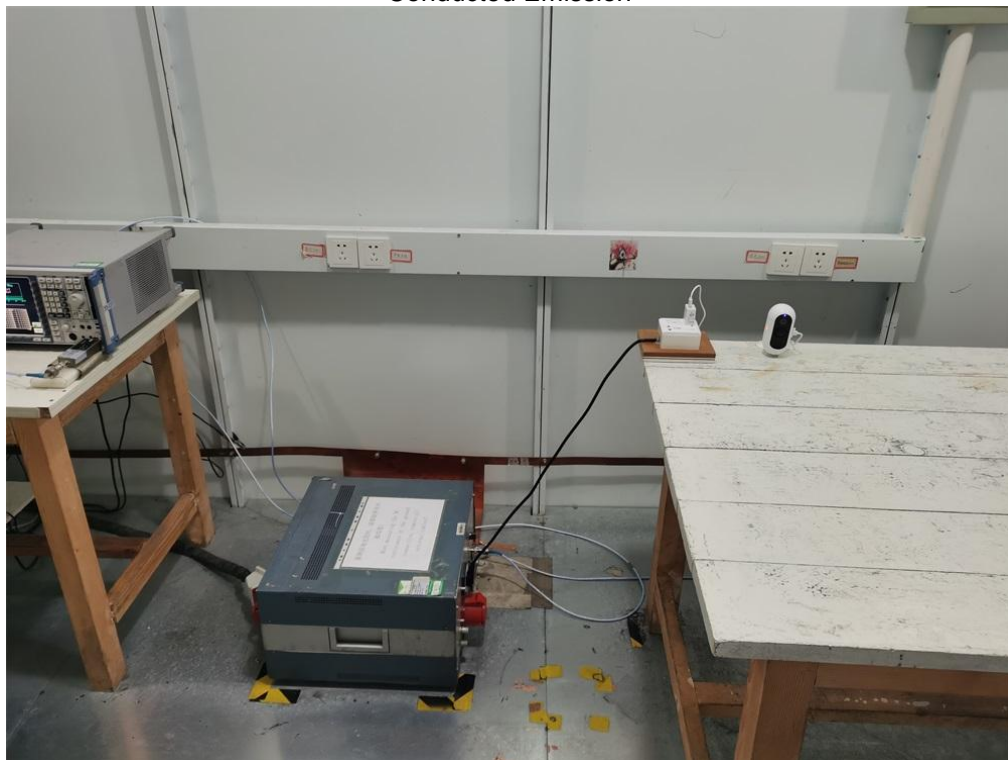
Adapter:GTA92-0501000US

Radiated Emission





Conducted Emission



## 6. EXTERNAL AND INTERNAL PHOTOS OF THE EUT



Fig. 1



Fig. 2





Fig. 3



Fig. 4



Fig. 5



Fig. 6



Fig. 7



Fig. 8



Fig. 9



Fig. 10

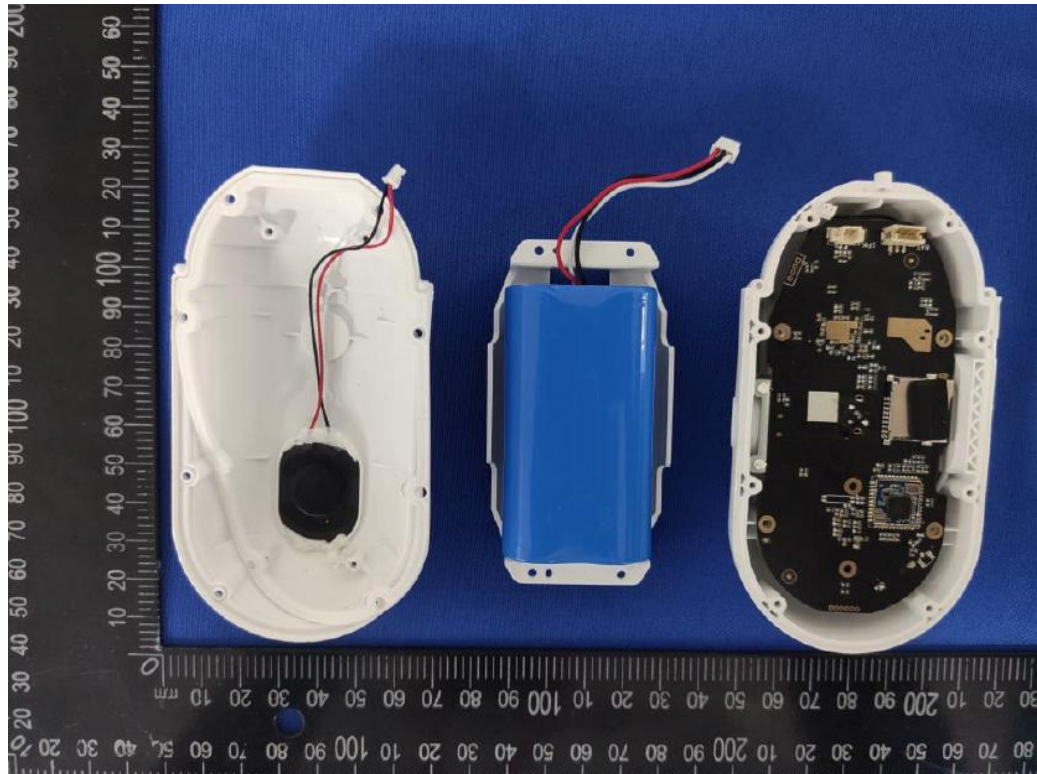


Fig. 11

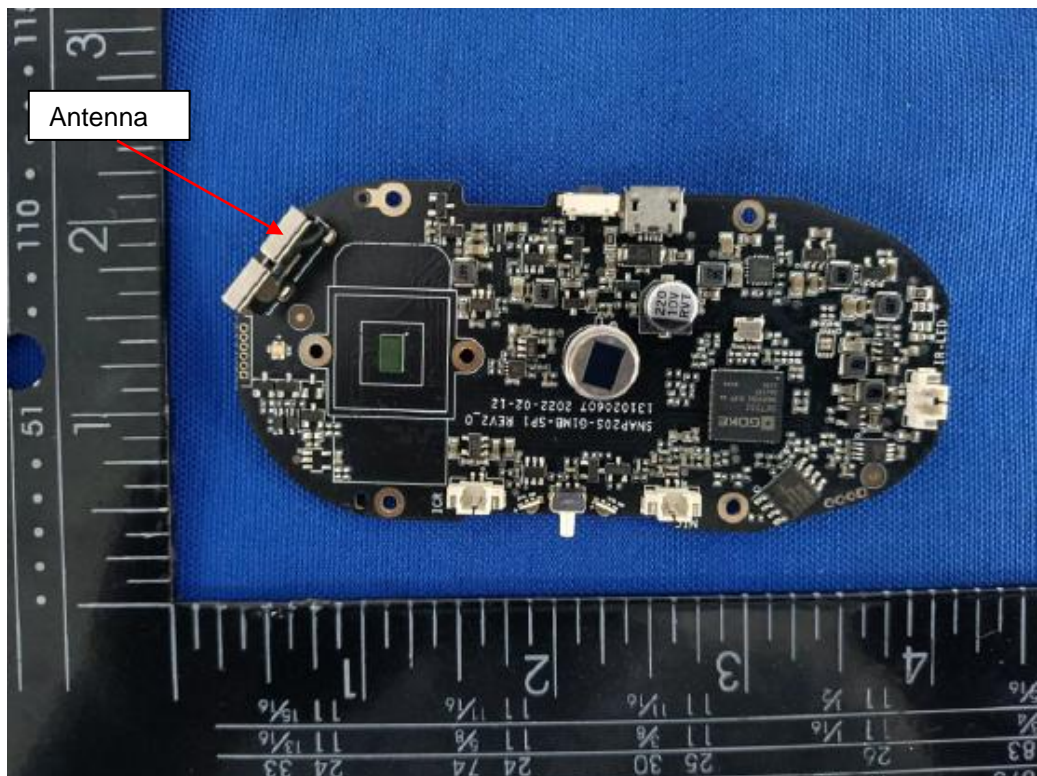


Fig. 12

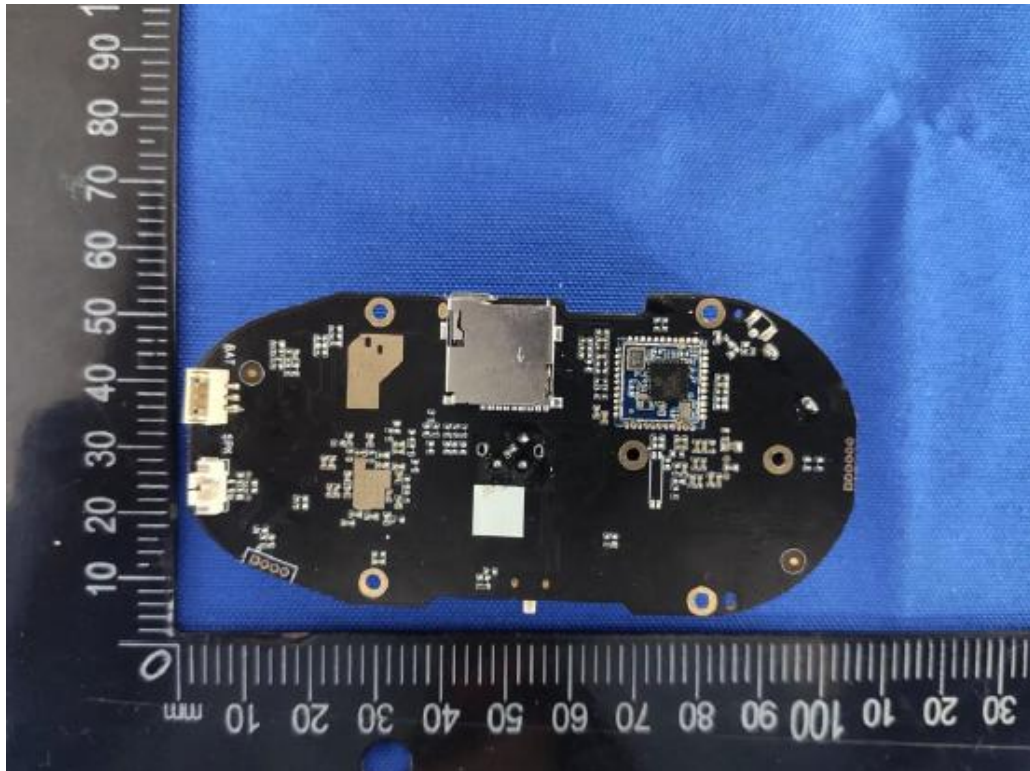


Fig. 13

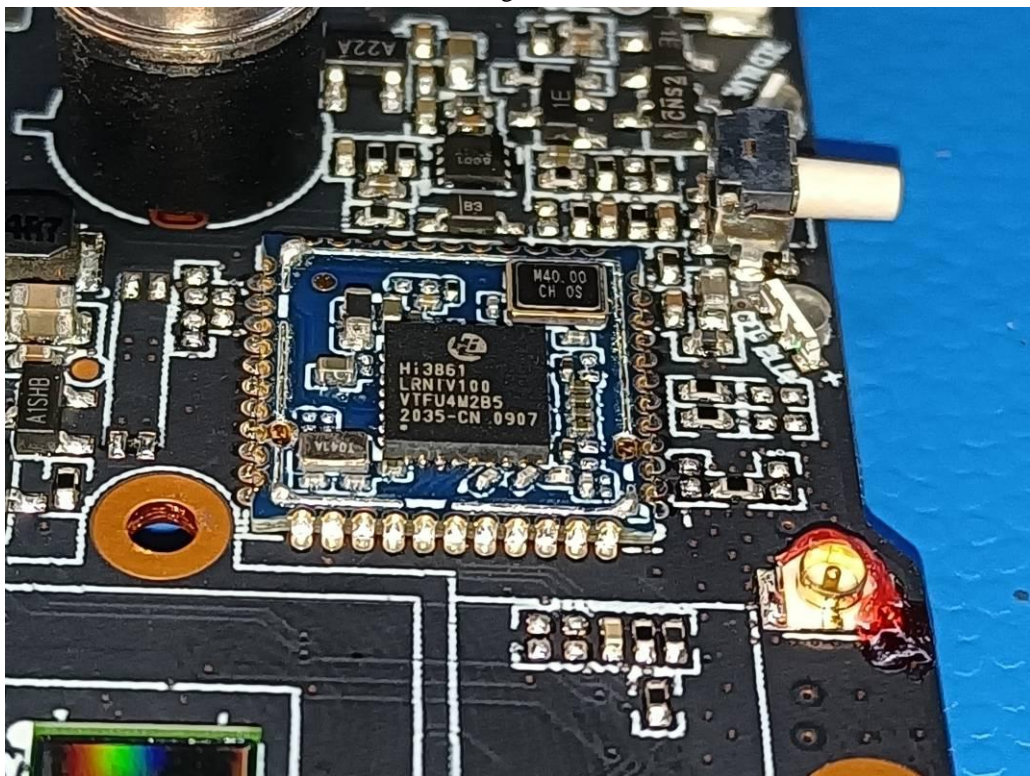


Fig. 14

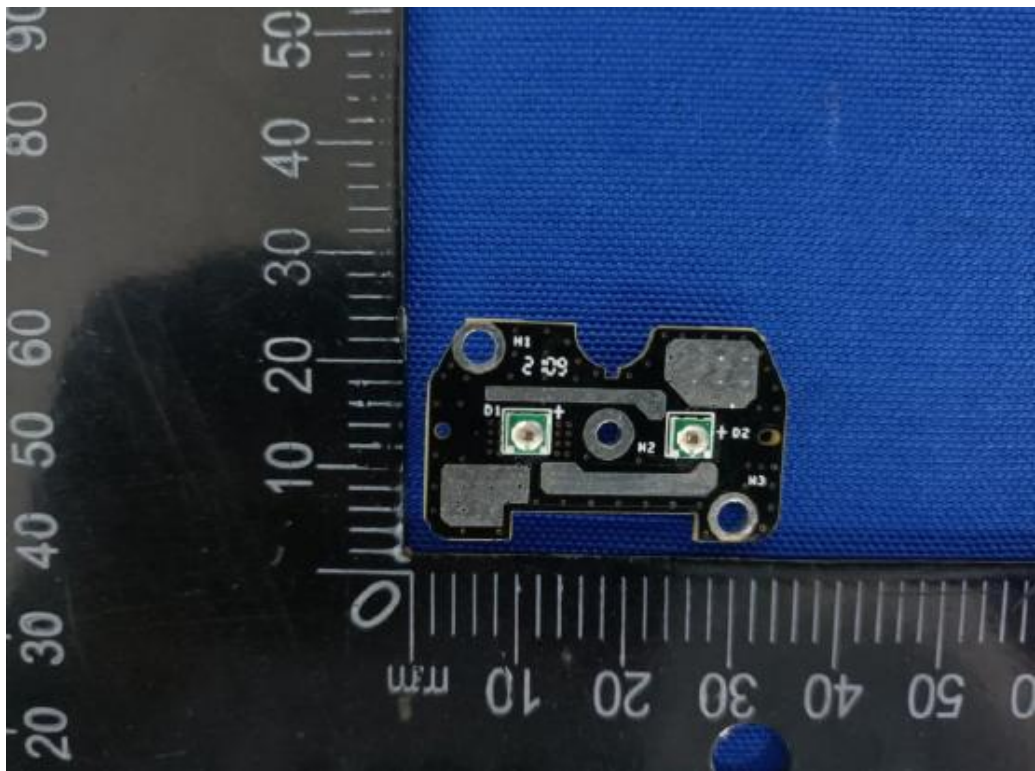


Fig. 15

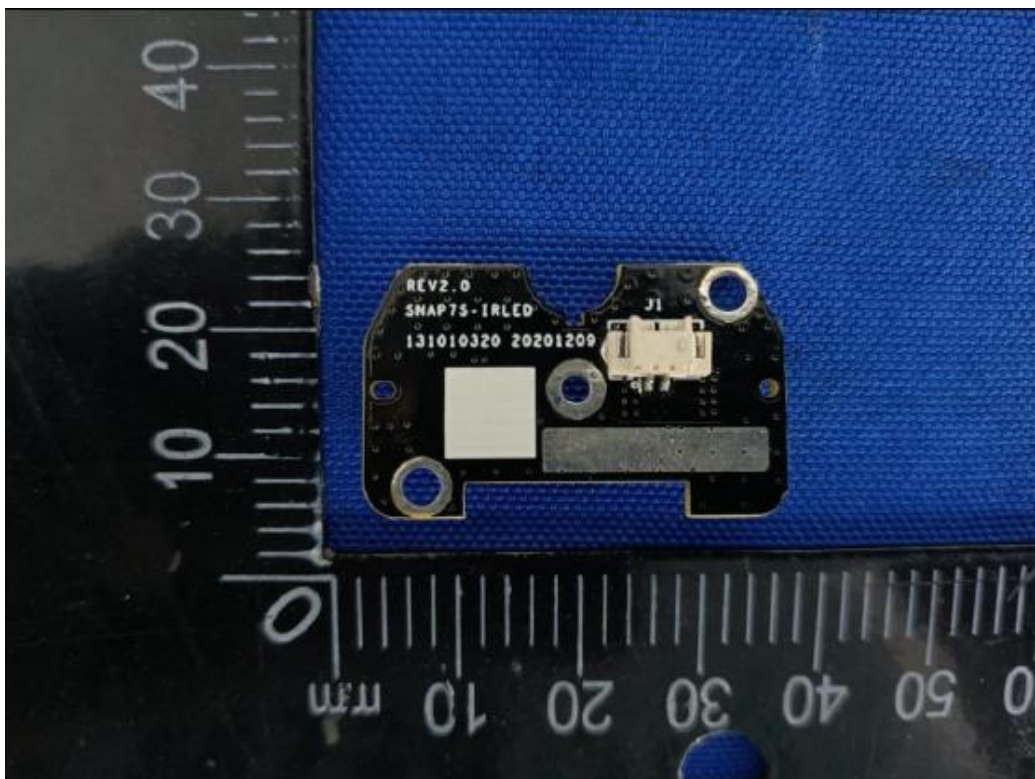


Fig. 16

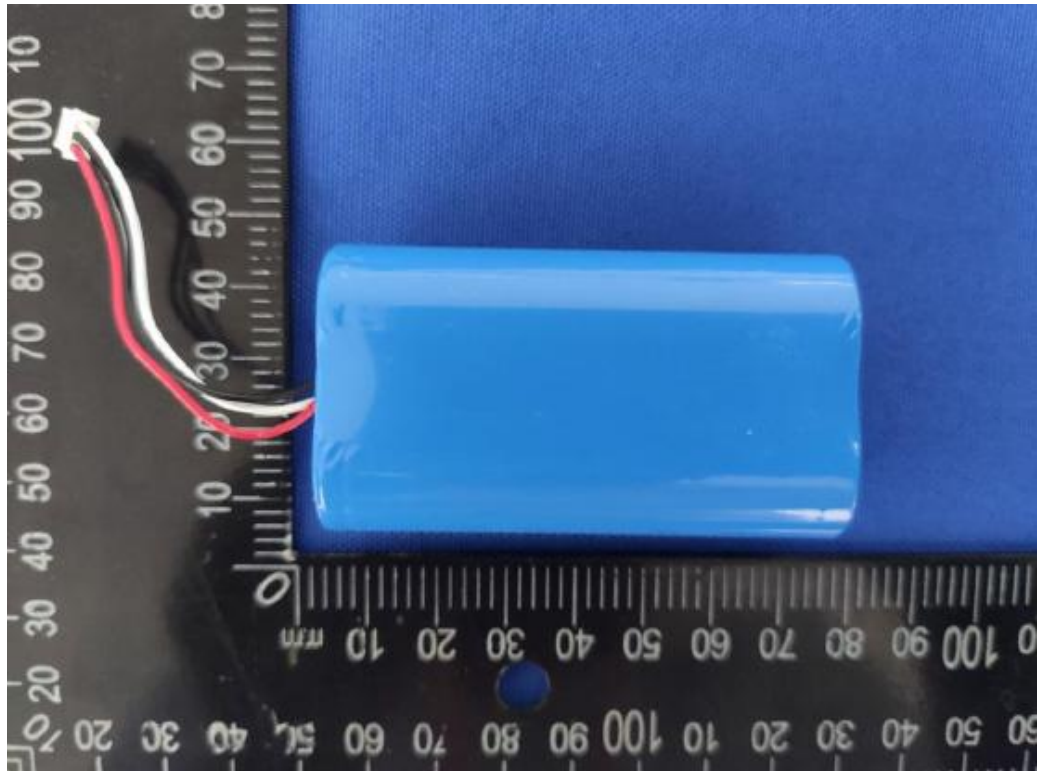


Fig. 17

.....End of Report.....