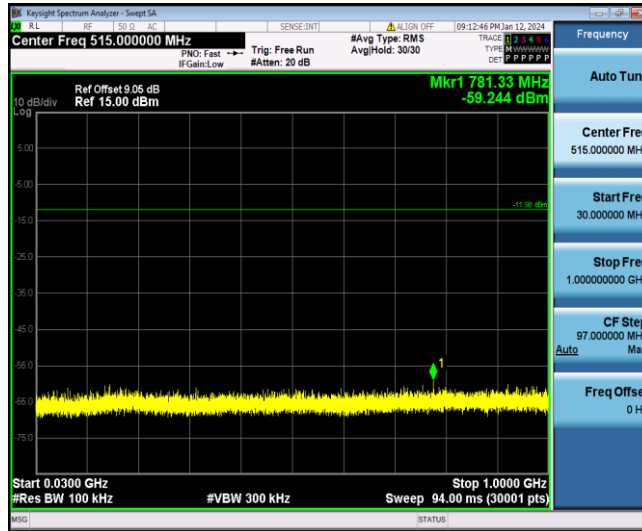
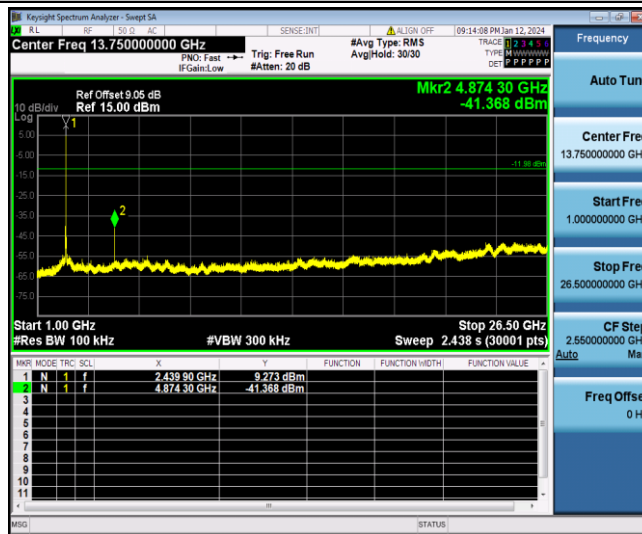




11B_Ant1_2437_30~1000



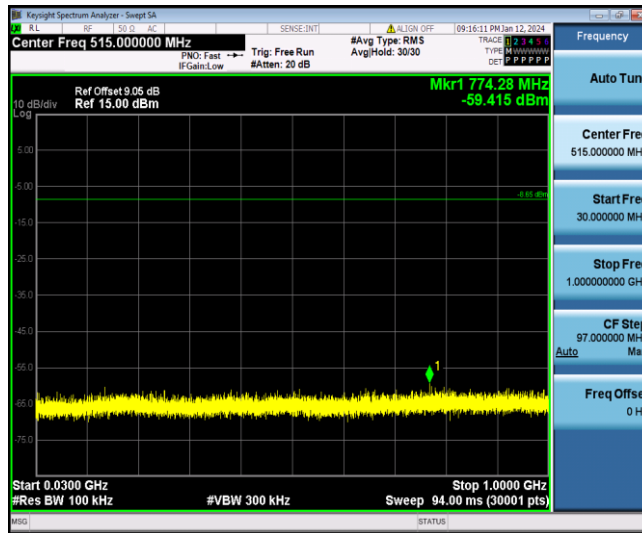
11B_Ant1_2437_1000~26500



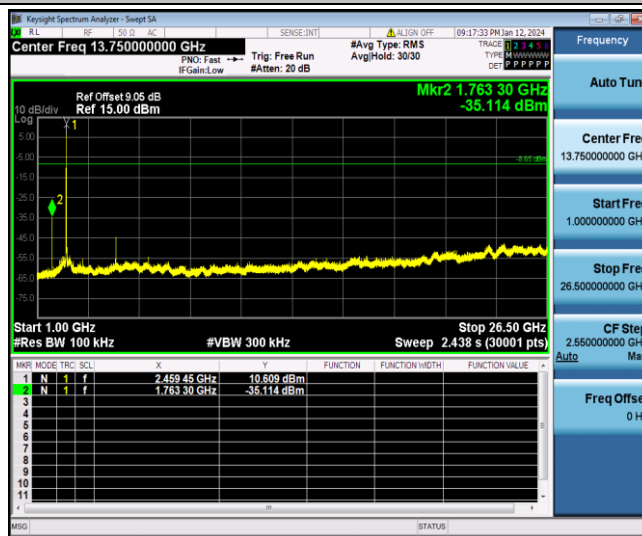
11B_Ant1_2462_0~Reference



11B_Ant1_2462_30~1000



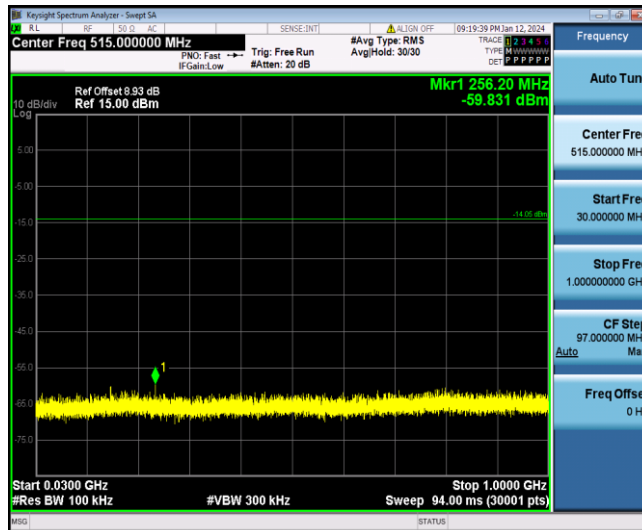
11B_Ant1_2462_1000~26500



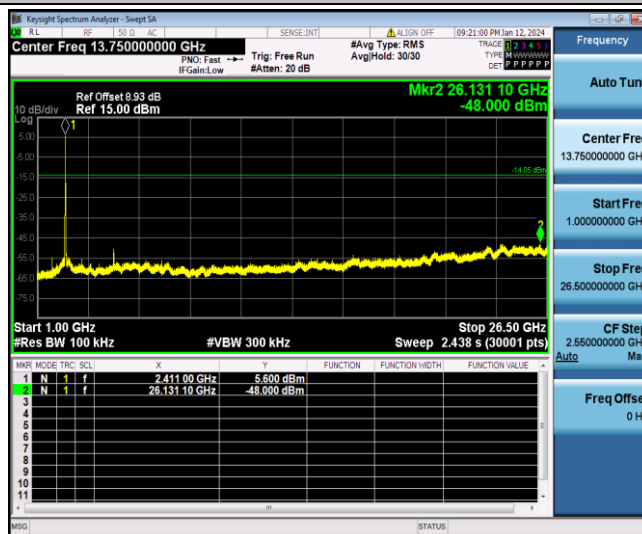
11G_Ant1_2412_0~Reference



11G_Ant1_2412_30~1000



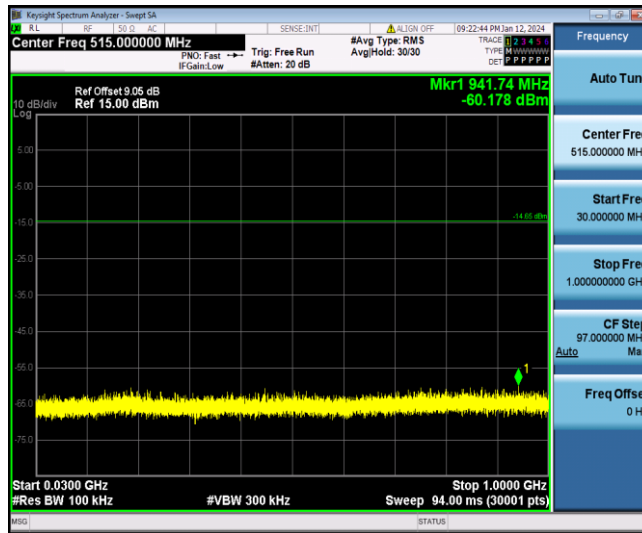
11G_Ant1_2412_1000~26500



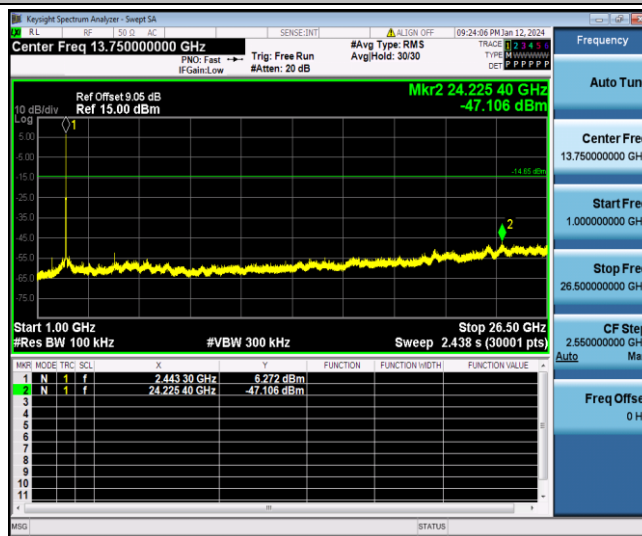
11G_Ant1_2437_0~Reference



11G_Ant1_2437_30~1000



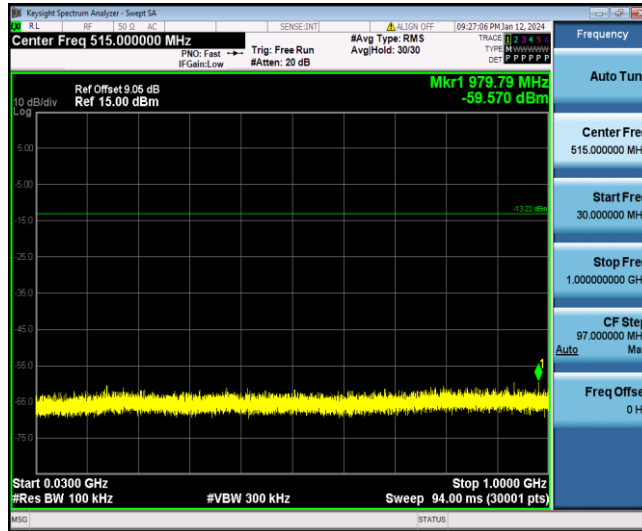
11G_Ant1_2437_1000~26500



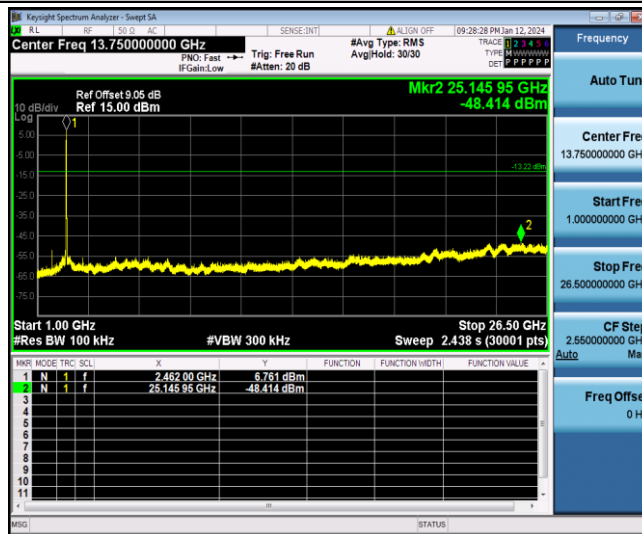
11G_Ant1_2462_0~Reference



11G_Ant1_2462_30~1000



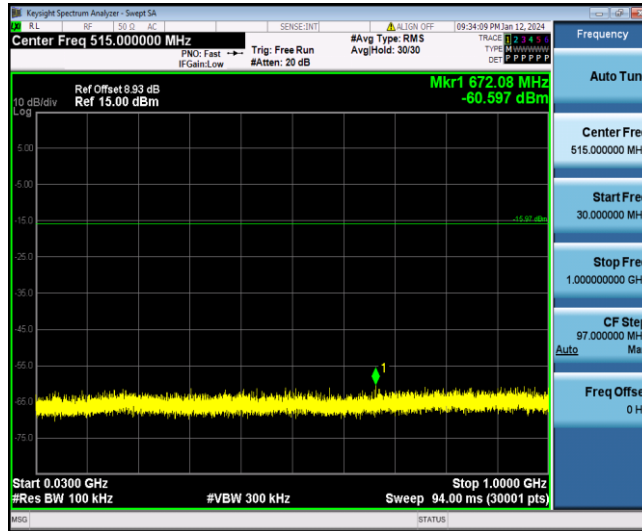
11G_Ant1_2462_1000~26500



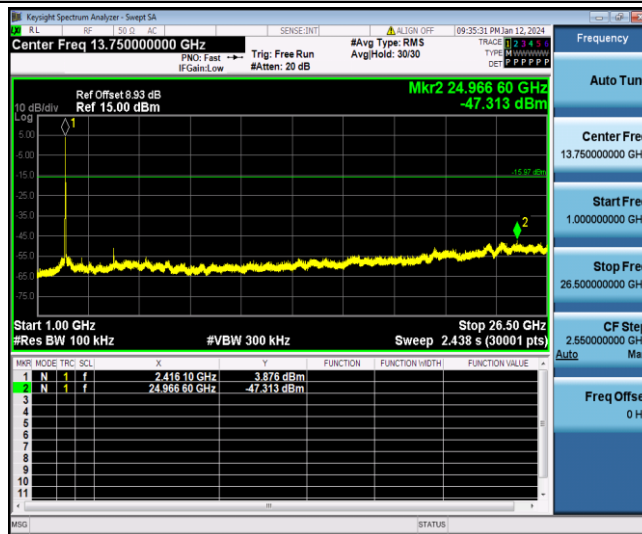
11N20SISO_Ant1_2412_0-Reference



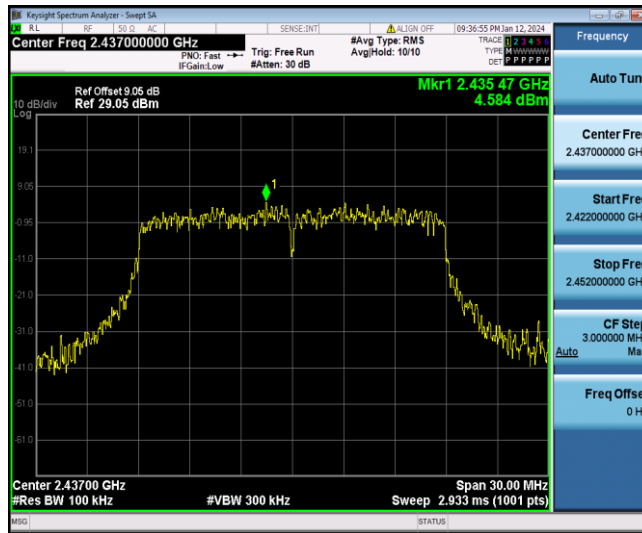
11N20SISO_Ant1_2412_30~1000



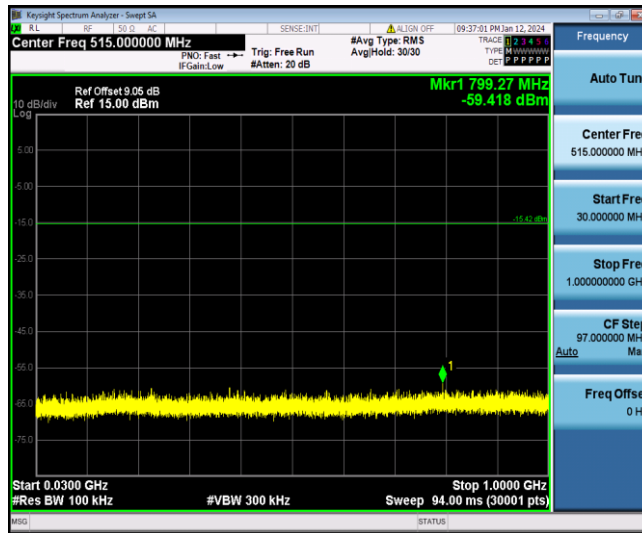
11N20SISO_Ant1_2412_1000~26500



11N20SISO_Ant1_2437_0~Reference



11N20SISO_Ant1_2437_30~1000



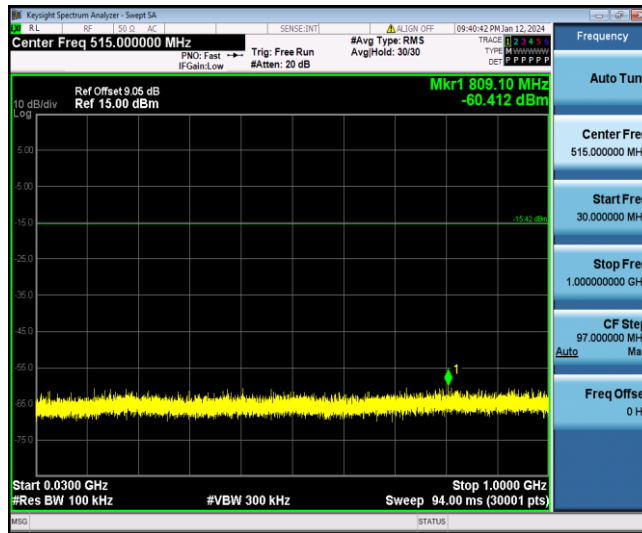
11N20SISO_Ant1_2437_1000~26500



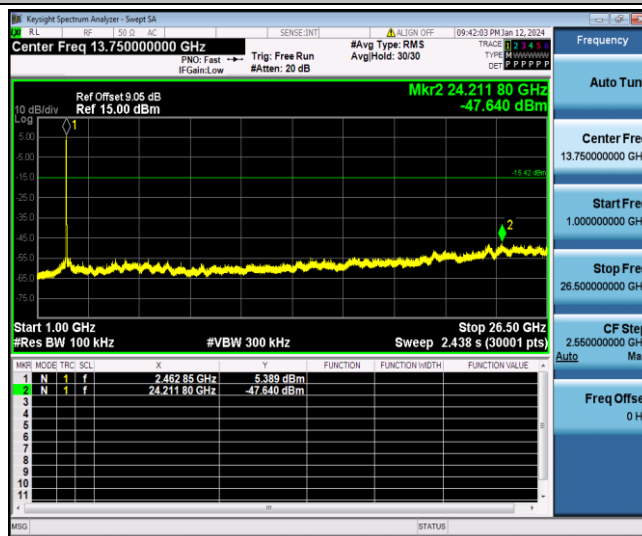
11N20SISO_Ant1_2462_0~Reference



11N20SISO_Ant1_2462_30~1000



11N20SISO_Ant1_2462_1000~26500



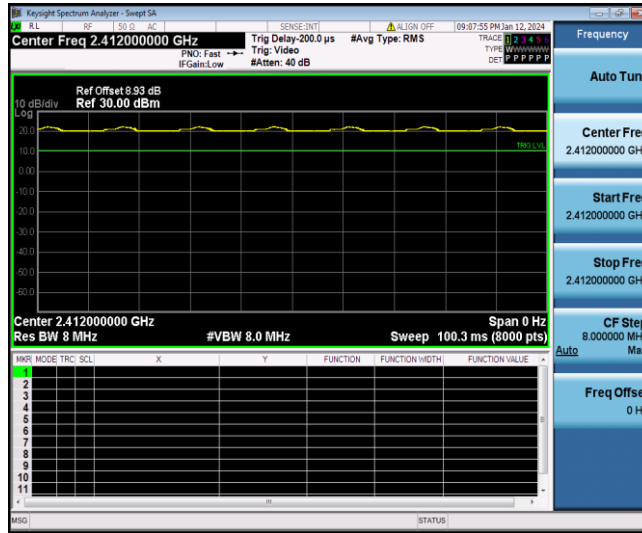
Appendix B.8: Duty Cycle

Test Result

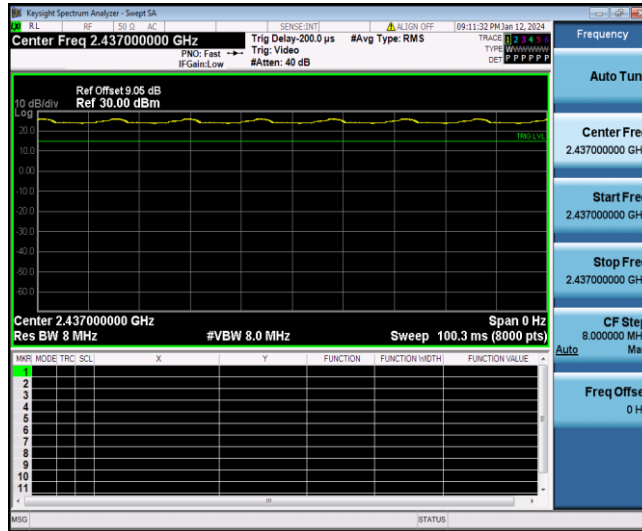
TestMode	Antenna	Frequency[MHz]	Transmission Duration [ms]	Transmission Period [ms]	Duty Cycle [%]	Duty Cycle Factor[dB]	1/T Factor[KHz]
11B	Ant1	2412	100.00	100.00	100.00	0.00	0.01
		2437	100.00	100.00	100.00	0.00	0.01
		2462	100.00	100.00	100.00	0.00	0.01
11G	Ant1	2412	100.00	100.00	100.00	0.00	0.01
		2437	100.00	100.00	100.00	0.00	0.01
		2462	100.00	100.00	100.00	0.00	0.01
11N20SISO	Ant1	2412	100.00	100.00	100.00	0.00	0.01
		2437	100.00	100.00	100.00	0.00	0.01
		2462	100.00	100.00	100.00	0.00	0.01

Test Graphs

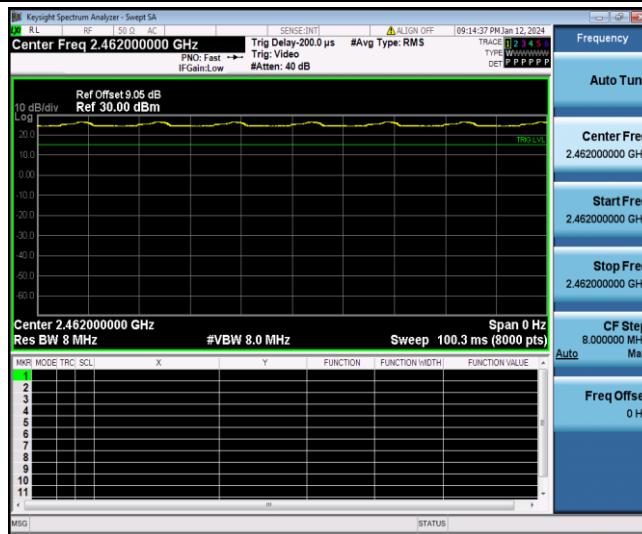
11B_Ant1_2412



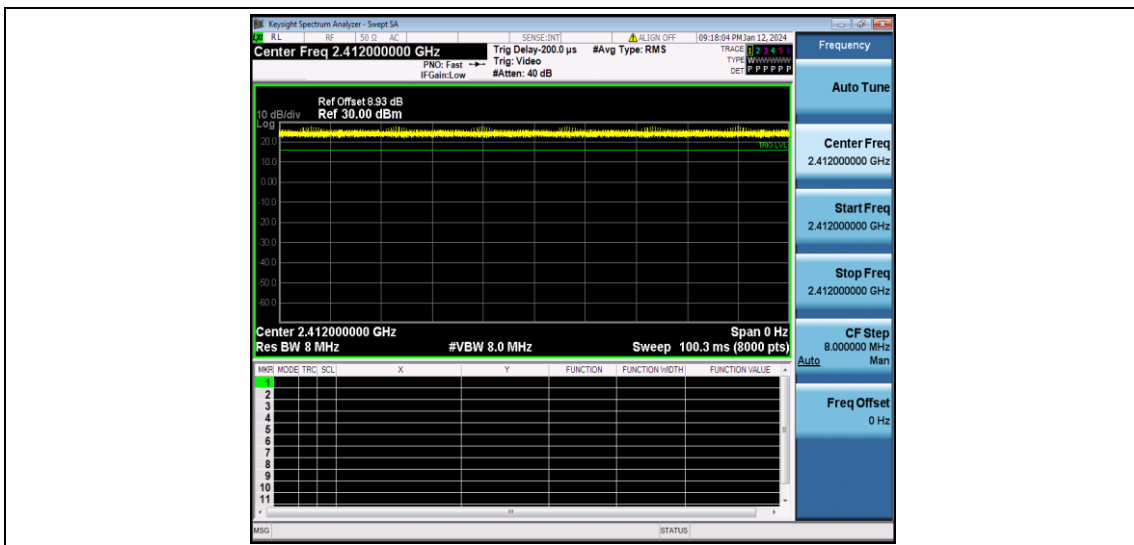
11B_Ant1_2437



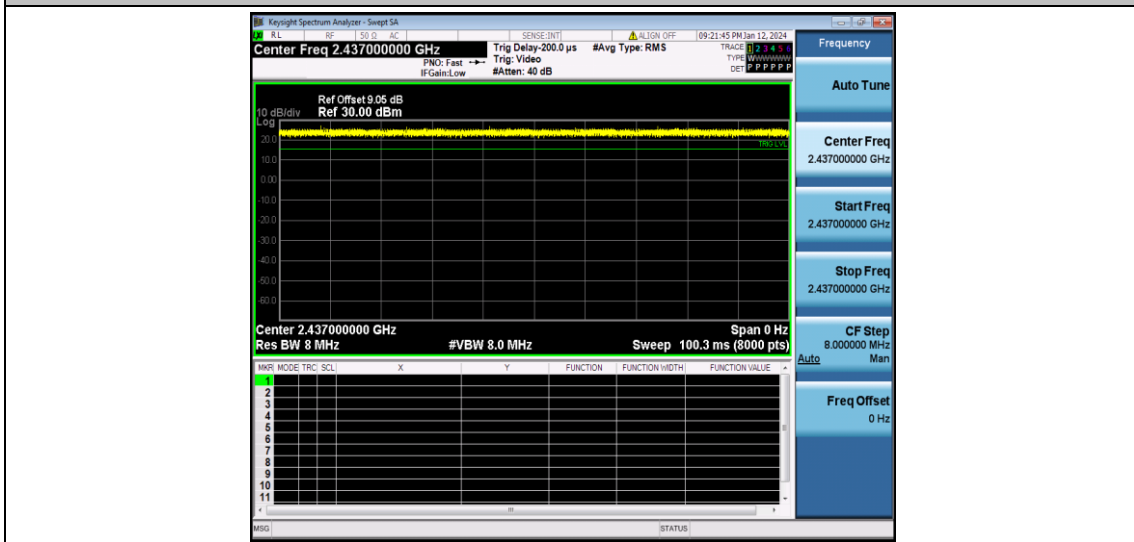
11B_Ant1_2462



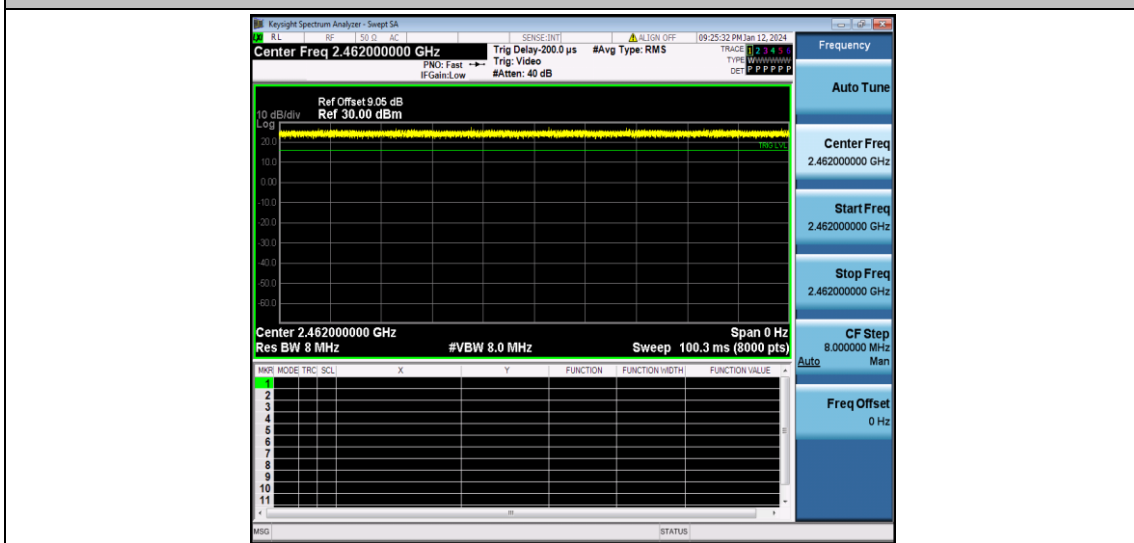
11G_Ant1_2412



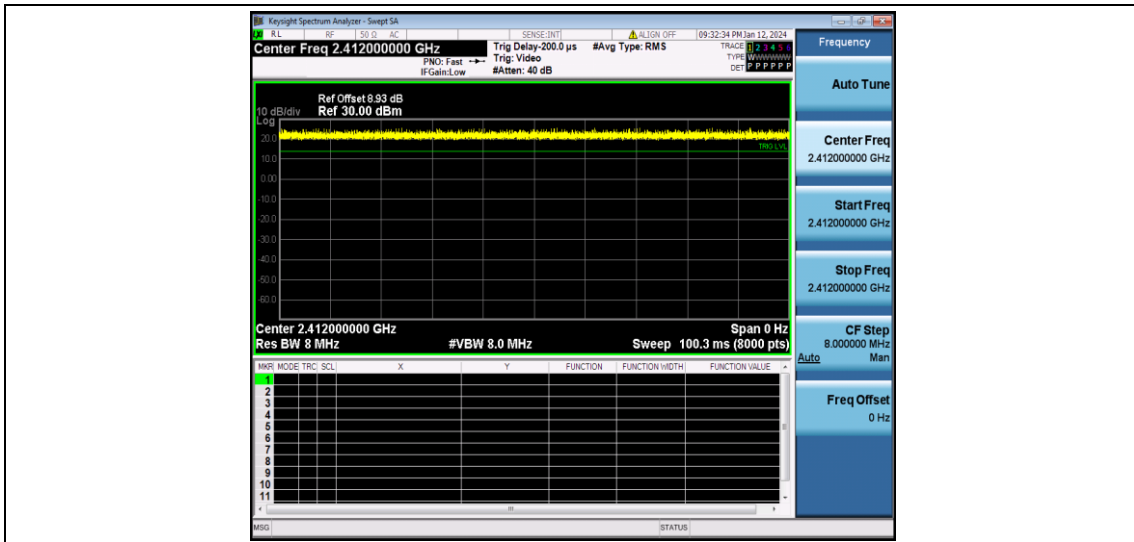
11G_Ant1_2437



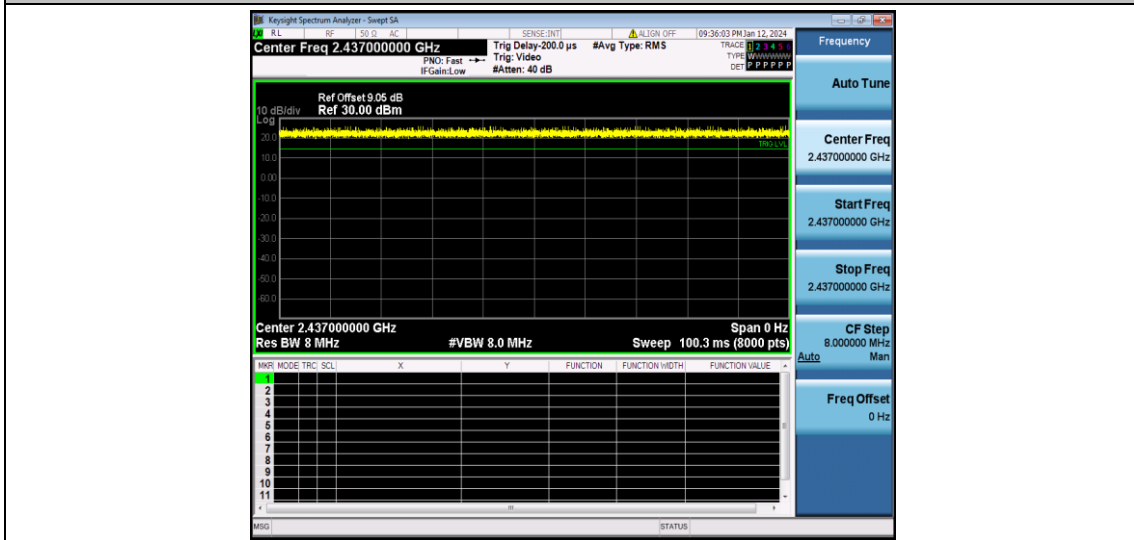
11G_Ant1_2462



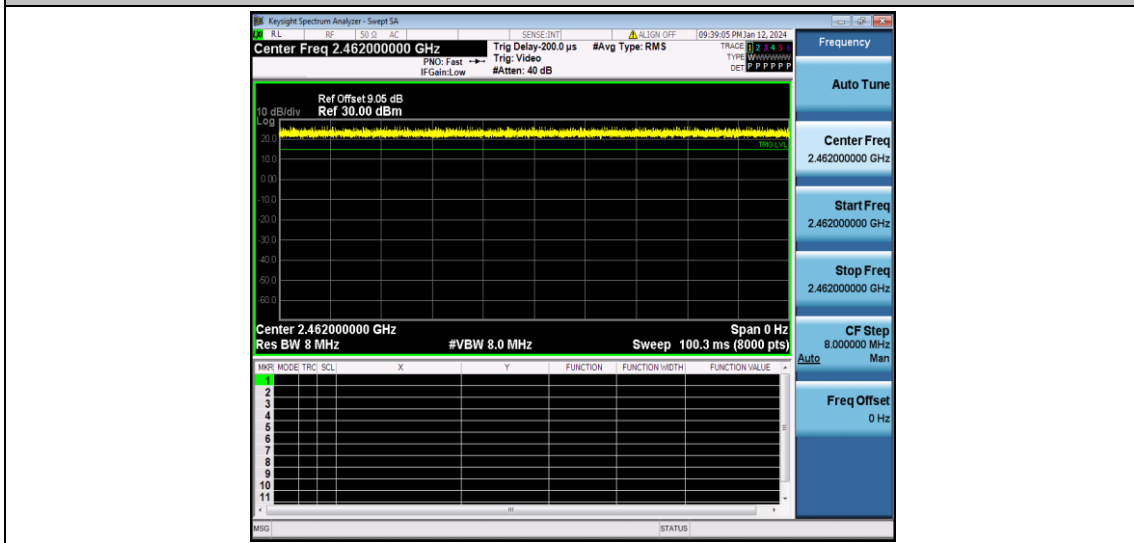
11N20SISO_Ant1_2412



11N20SISO_Ant1_2437



11N20SISO_Ant1_2462



Appendix B.7: Emissions in Restricted Bands

Test Result

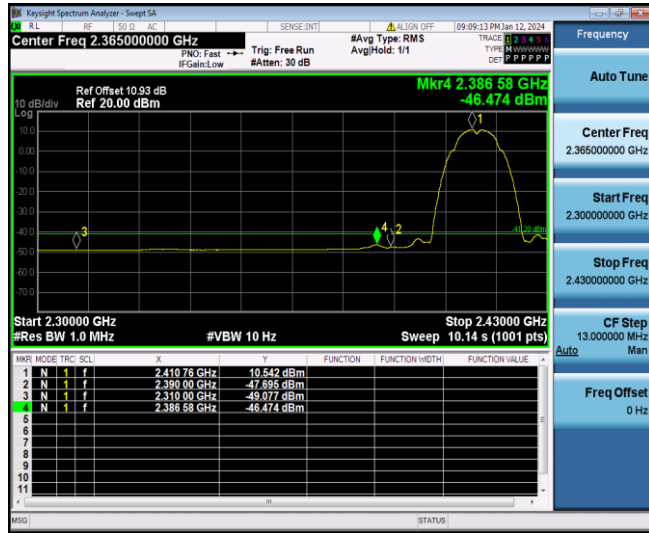
TestMode	Antenna	ChName	Frequency [MHz]	Detector	Freq [MHz]	Result [dBm]	Limit [dBm]	Result [dBuV/m]	Limit [dBuV/m]	Verdict
11B	Ant1	Low	2412	AV	2310.000	-49.08	≤-41.20	46.12	≤54	PASS
				AV	2386.580	-46.47	≤-41.20	48.73	≤54	PASS
				AV	2390.000	-47.7	≤-41.20	47.50	≤54	PASS
				Peak	2310.000	-47.34	≤-21.20	47.86	≤74	PASS
				Peak	2380.730	-39.46	≤-21.20	55.74	≤74	PASS
				Peak	2390.000	-48.55	≤-21.20	46.65	≤74	PASS
		High	2462	AV	2483.500	-45.13	≤-41.20	50.07	≤54	PASS
				AV	2483.560	-45.25	≤-41.20	49.95	≤54	PASS
				AV	2500.000	-46.8	≤-41.20	48.40	≤54	PASS
				Peak	2483.500	-38.51	≤-21.20	56.69	≤74	PASS
				Peak	2484.220	-39	≤-21.20	56.20	≤74	PASS
				Peak	2500.000	-45.4	≤-21.20	49.80	≤74	PASS
11G	Ant1	Low	2412	AV	2310.000	-49.62	≤-41.20	45.58	≤54	PASS
				AV	2389.960	-48.01	≤-41.20	47.19	≤54	PASS
				AV	2390.000	-48.01	≤-41.20	47.19	≤54	PASS
				Peak	2310.000	-44.97	≤-21.20	50.23	≤74	PASS
				Peak	2331.980	-40.09	≤-21.20	55.11	≤74	PASS
				Peak	2390.000	-49.79	≤-21.20	45.41	≤74	PASS
		High	2462	AV	2483.500	-47.87	≤-41.20	47.33	≤54	PASS
				AV	2483.560	-47.88	≤-41.20	47.32	≤54	PASS
				AV	2500.000	-48.98	≤-41.20	46.22	≤54	PASS
				Peak	2483.500	-42.97	≤-21.20	52.23	≤74	PASS
				Peak	2494.780	-40.84	≤-21.20	54.36	≤74	PASS
				Peak	2500.000	-46.77	≤-21.20	48.43	≤74	PASS
11N20SIS O	Ant1	Low	2412	AV	2310.000	-49.72	≤-41.20	45.48	≤54	PASS
				AV	2389.960	-47.53	≤-41.20	47.67	≤54	PASS
				AV	2390.000	-47.54	≤-41.20	47.66	≤54	PASS
				Peak	2310.000	-46.48	≤-21.20	48.72	≤74	PASS
				Peak	2388.920	-35.15	≤-21.20	60.05	≤74	PASS
				Peak	2390.000	-47.79	≤-21.20	47.41	≤74	PASS
		High	2462	AV	2483.500	-45.19	≤-41.20	50.01	≤54	PASS
				AV	2483.560	-45.23	≤-41.20	49.97	≤54	PASS
				AV	2500.000	-48.92	≤-41.20	46.28	≤54	PASS
				Peak	2483.500	-43.93	≤-21.20	51.27	≤74	PASS
				Peak	2486.860	-36.69	≤-21.20	58.51	≤74	PASS
				Peak	2500.000	-43.31	≤-21.20	51.89	≤74	PASS

Note:

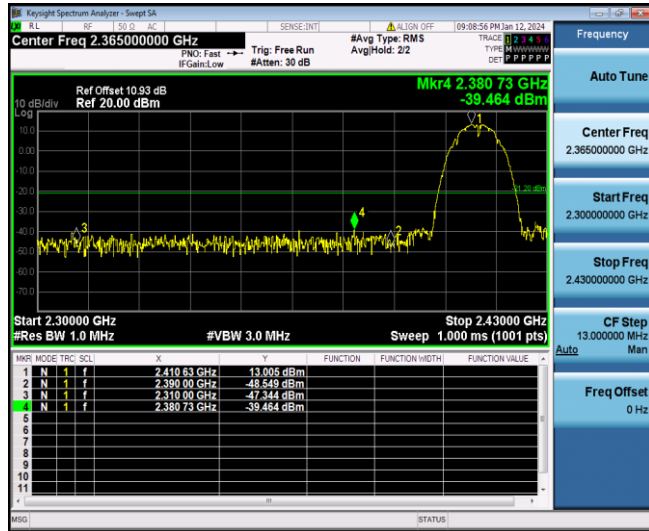
2. The Antenna Gain is compensated in the graph.
3. The Duty Cycle Factor and RBW Factor is compensated in the graph.
4. The limit in dBm for average detector is conversion from 54dBuV/m, according to 15.209(a). The limit in dBm for peak detector is 20dB above the limit of average detector in dBm.

Test Graphs

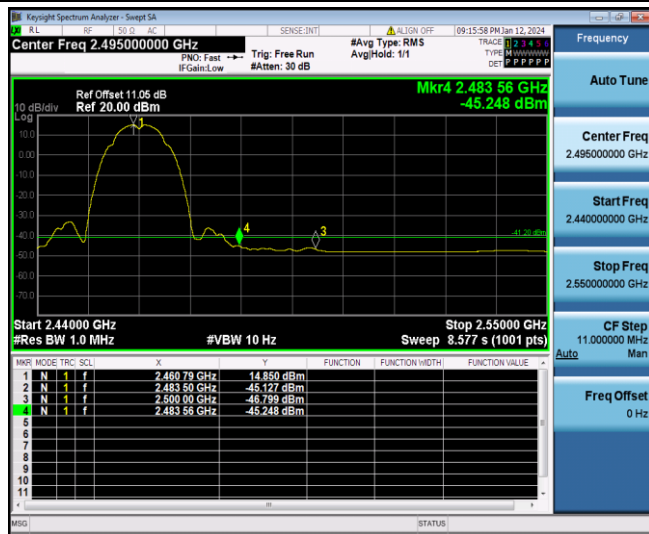
11B_Ant1_Low_2412_AV



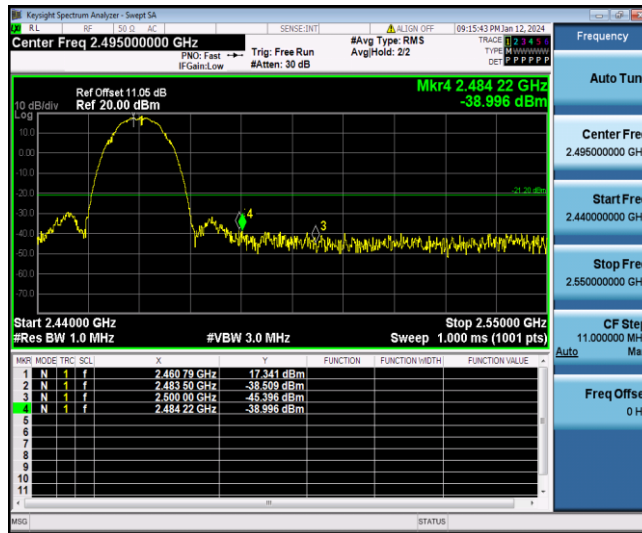
11B_Ant1_Low_2412_Peak



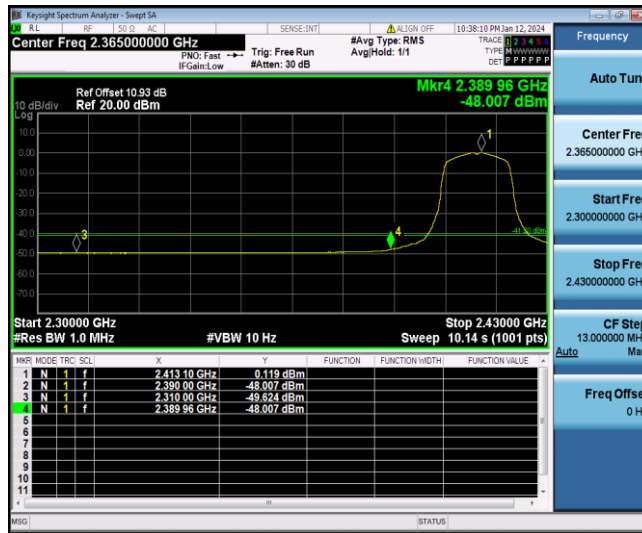
11B_Ant1_High_2462_AV



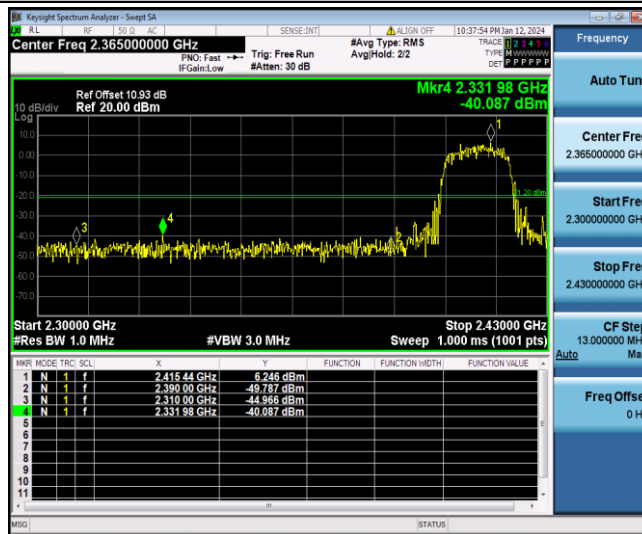
11B_Ant1_High_2462_Peak



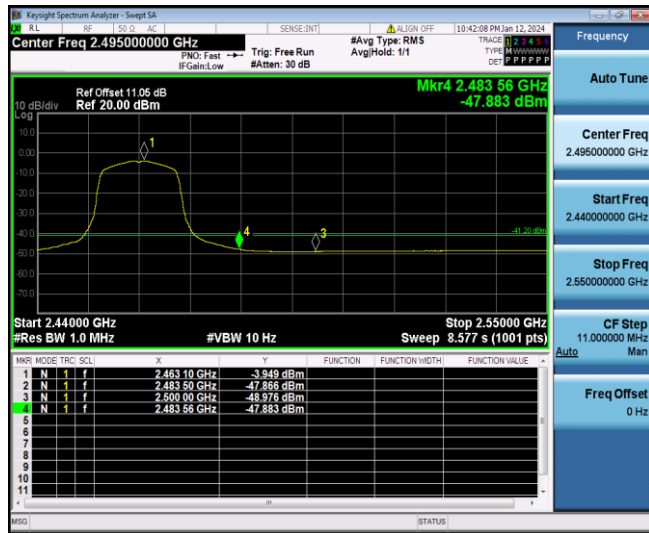
11G_Ant1_Low_2412_AV



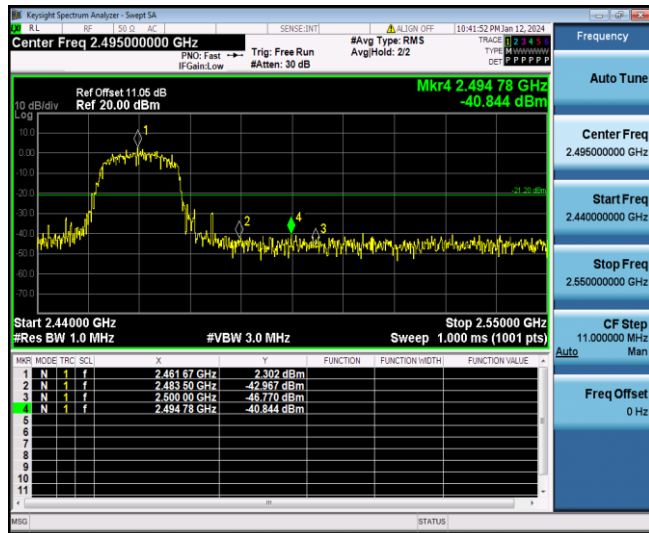
11G_Ant1_Low_2412_Peak



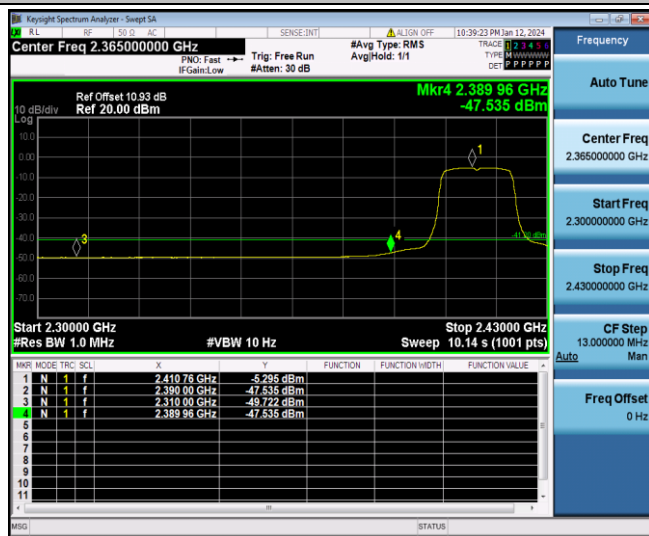
11G_Ant1_High_2462_AV



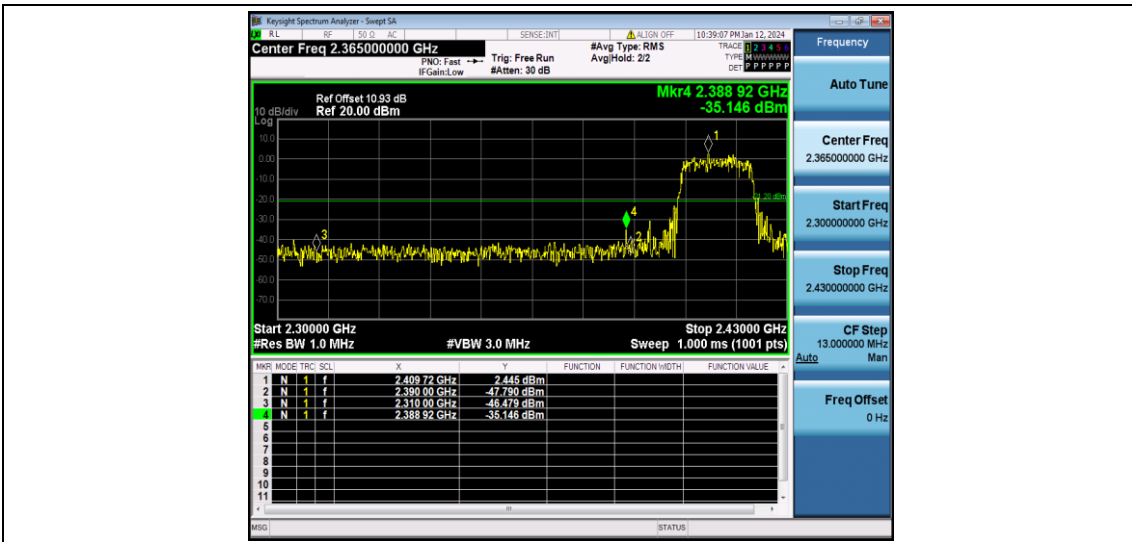
11G_Ant1_High_2462_Peak



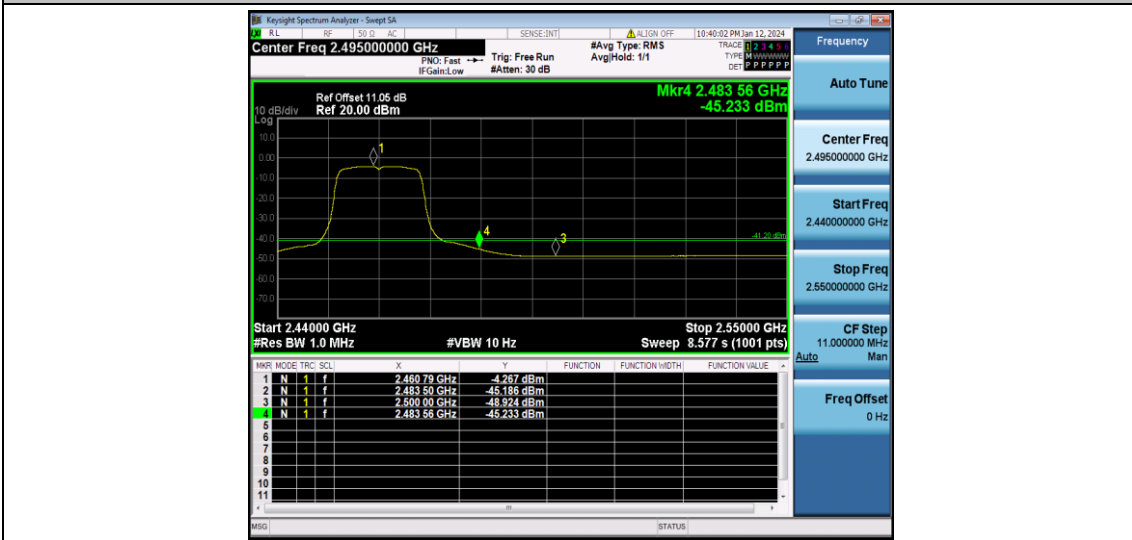
11N20SISO_Ant1_Low_2412_AV



11N20SISO_Ant1_Low_2412_Peak



11N20SISO_Ant1_High_2462_AV



11N20SISO_Ant1_High_2462_Peak

