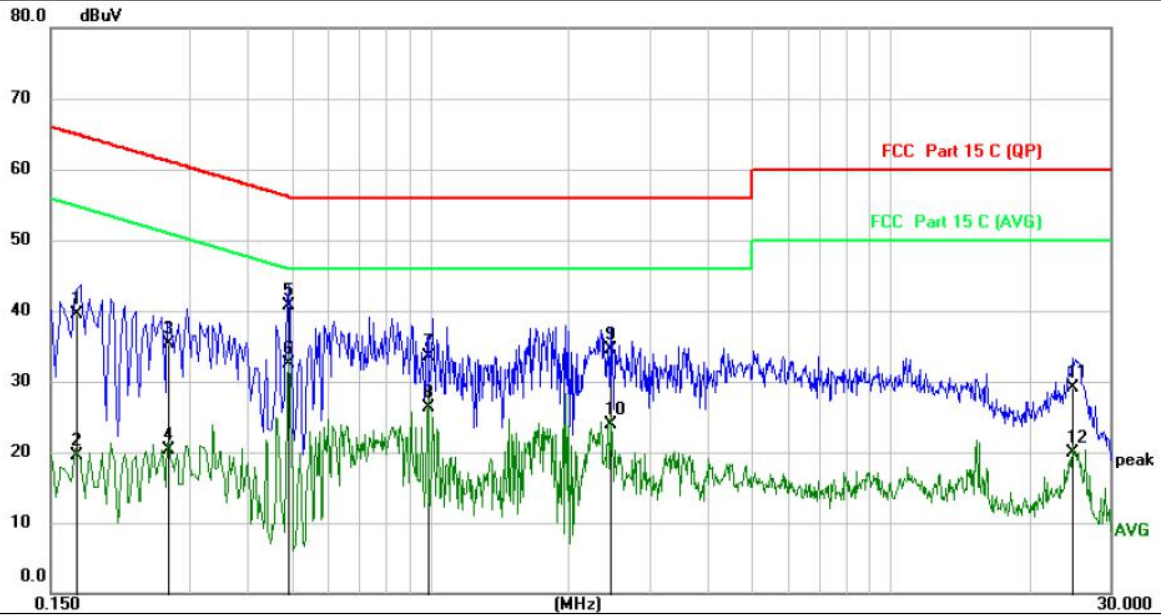


Test Voltage:	AC 120V/60Hz
Terminal:	Neutral
Test Mode:	802.11g



No.	Mk.	Freq. MHz	Reading Level dBuV	Correct Factor dB	Measure- ment dBuV	Limit dBuV	Over dB	Detector
1		0.1700	28.77	10.74	39.51	64.96	-25.45	QP
2		0.1700	8.70	10.74	19.44	54.96	-35.52	AVG
3		0.2700	24.69	10.63	35.32	61.12	-25.80	QP
4		0.2700	9.73	10.63	20.36	51.12	-30.76	AVG
5		0.4940	30.28	10.52	40.80	56.10	-15.30	QP
6	*	0.4940	22.08	10.52	32.60	46.10	-13.50	AVG
7		0.9900	22.93	10.50	33.43	56.00	-22.57	QP
8		0.9900	15.82	10.50	26.32	46.00	-19.68	AVG
9		2.4660	24.06	10.54	34.60	56.00	-21.40	QP
10		2.4660	13.40	10.54	23.94	46.00	-22.06	AVG
11		24.8980	18.20	10.93	29.13	60.00	-30.87	QP
12		24.8980	9.07	10.93	20.00	50.00	-30.00	AVG

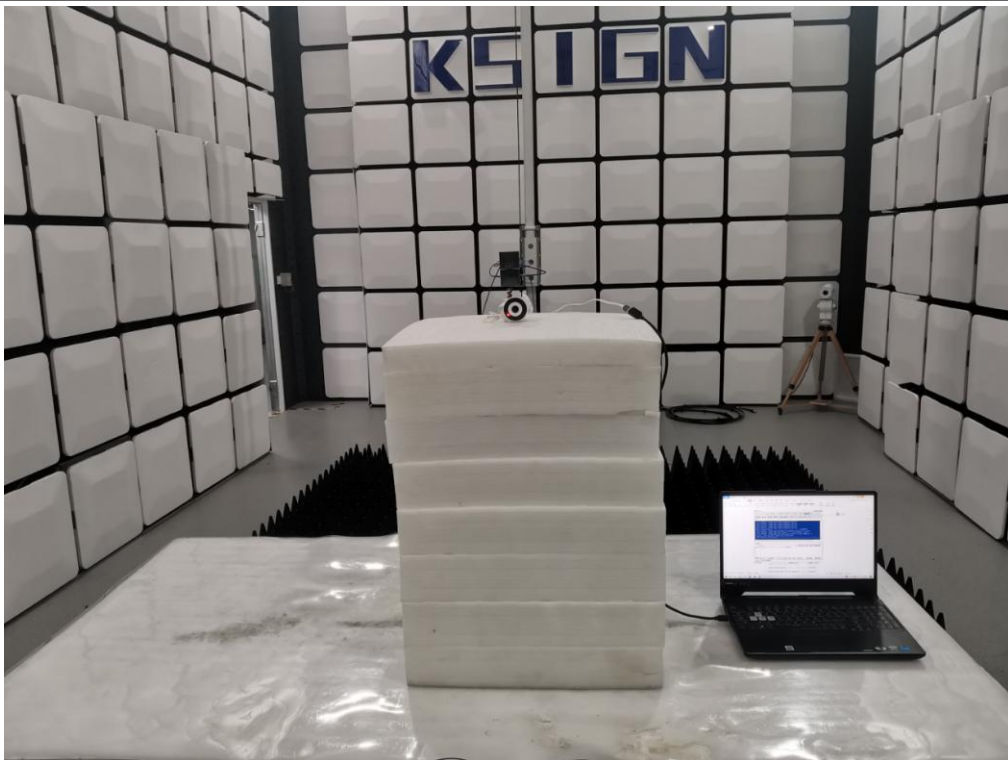
Remarks:
 1.Measurement = Reading Level+ Correct Factor
 2.Over = Measurement -Limit

4.EUT TEST PHOTOS

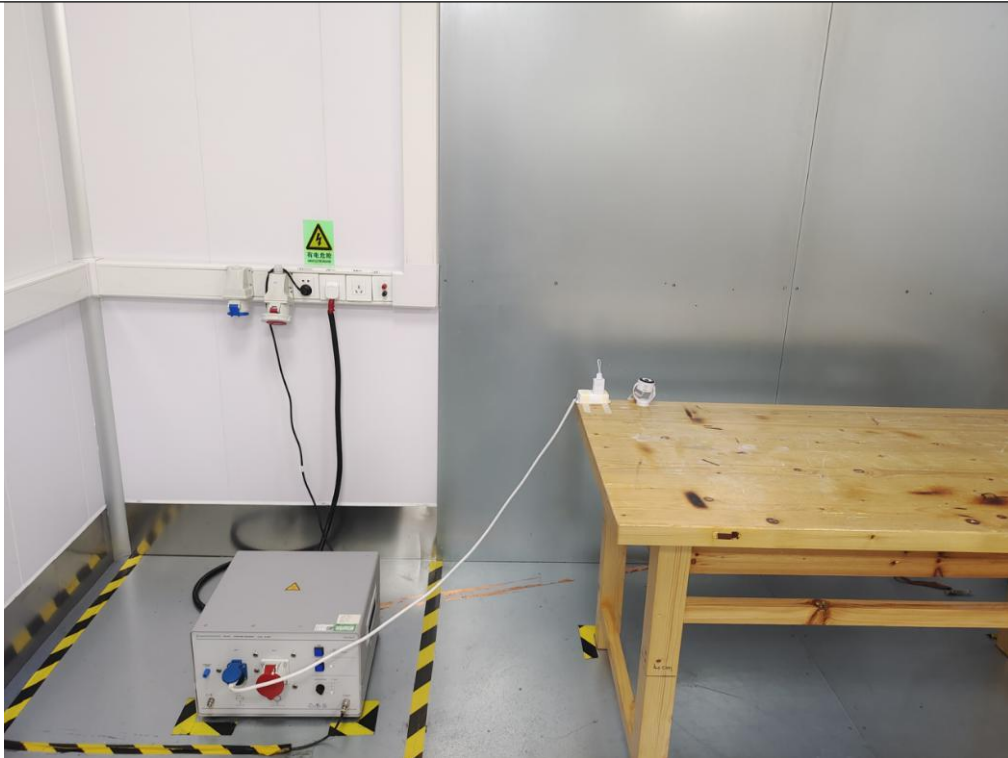
Radiated Measurement (Below 1GHz)



Radiated Measurement (Above 1GHz)



Conducted Emission



RF Conducted



5. PHOTOGRAPHS OF EUT CONSTRUCTIONAL

External Photographs

Photo 1

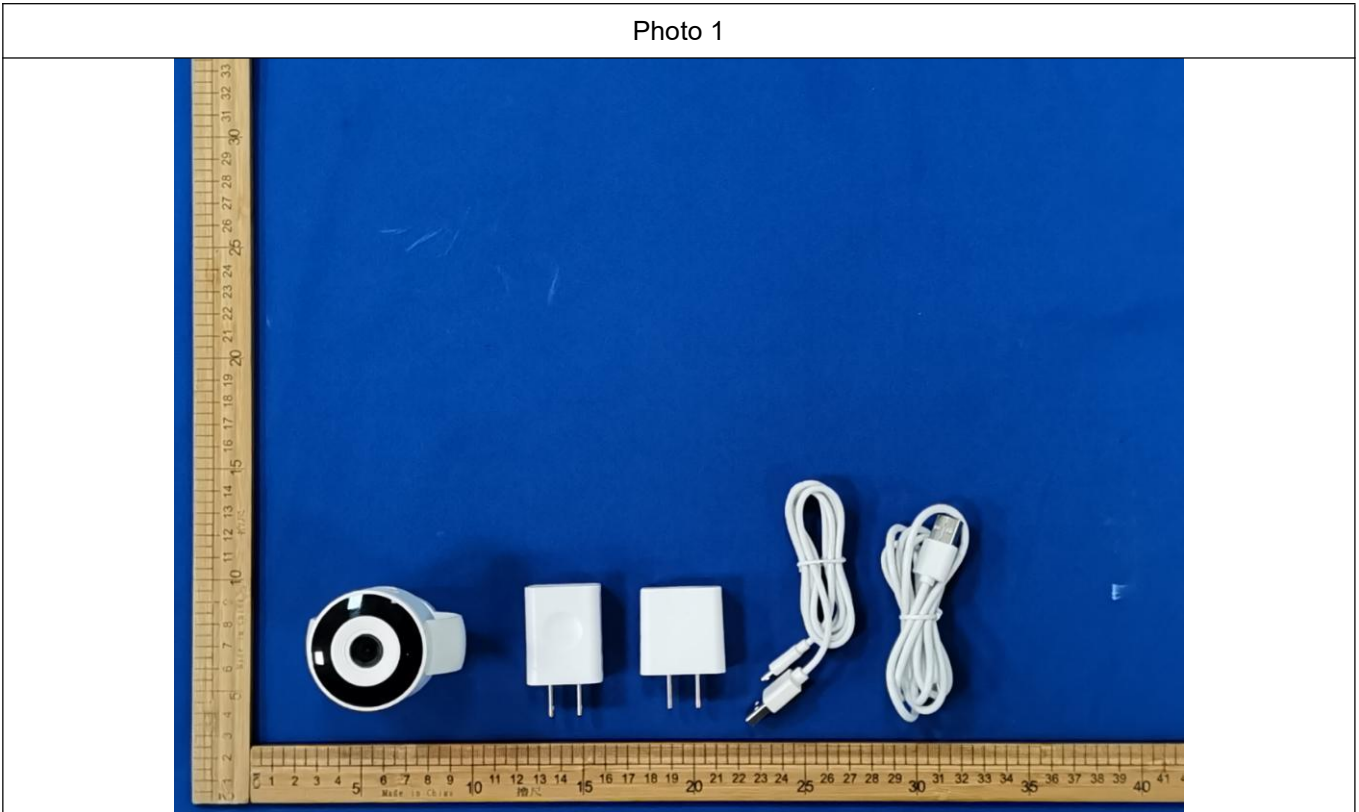


Photo 2

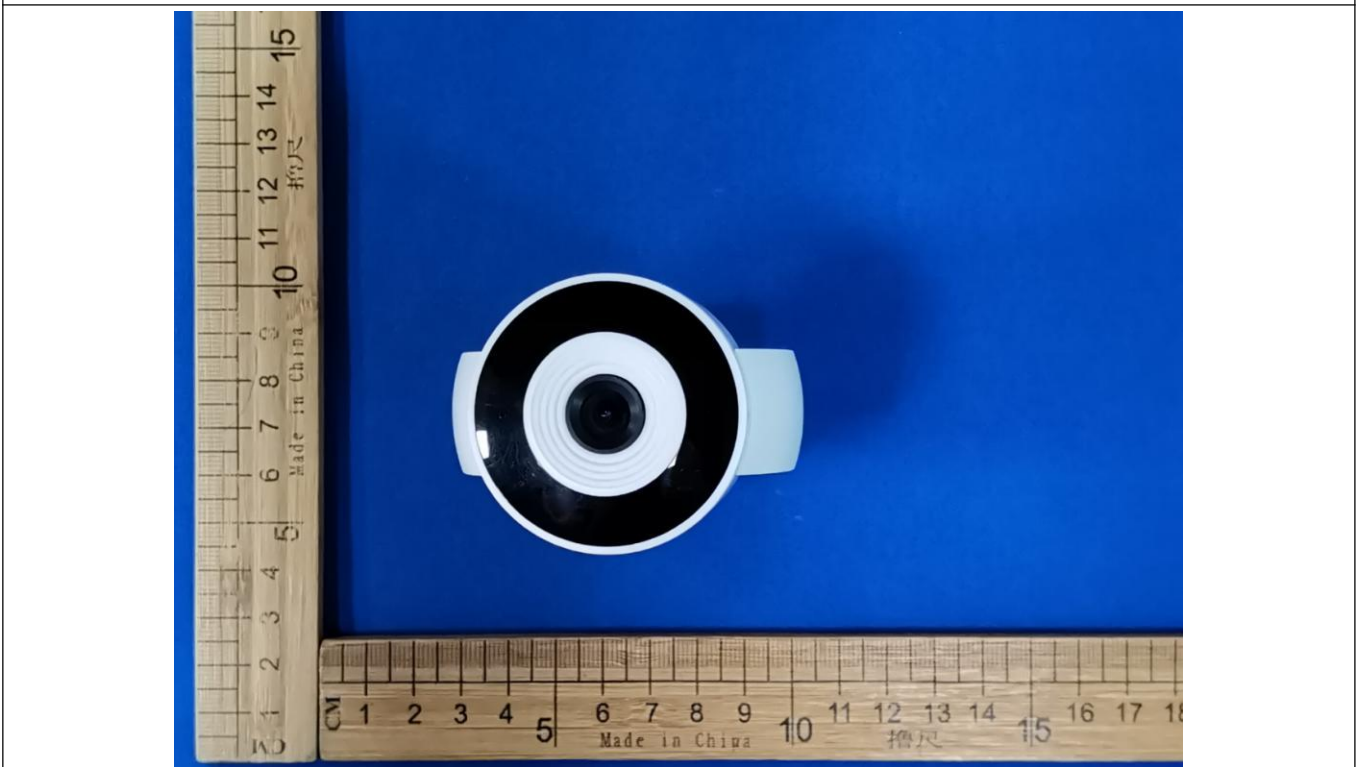


Photo 3

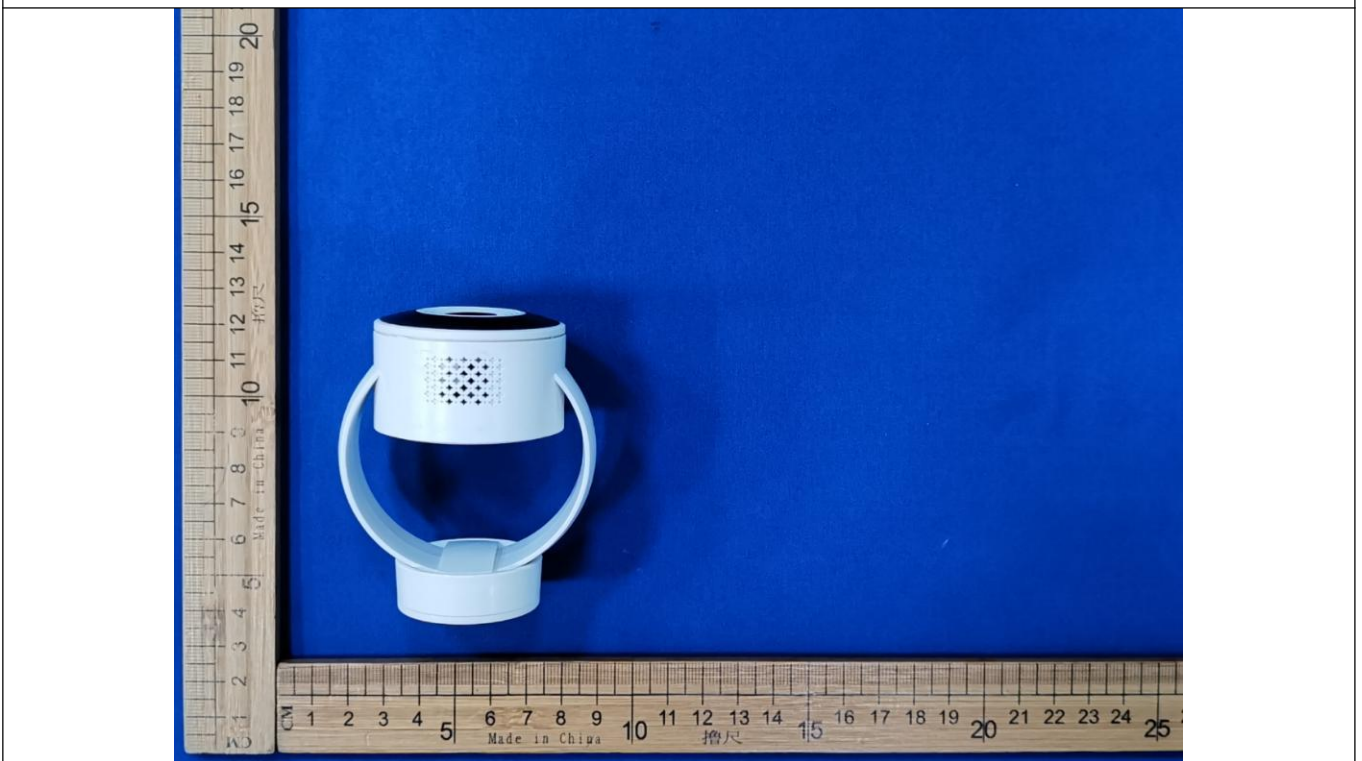


Photo 4

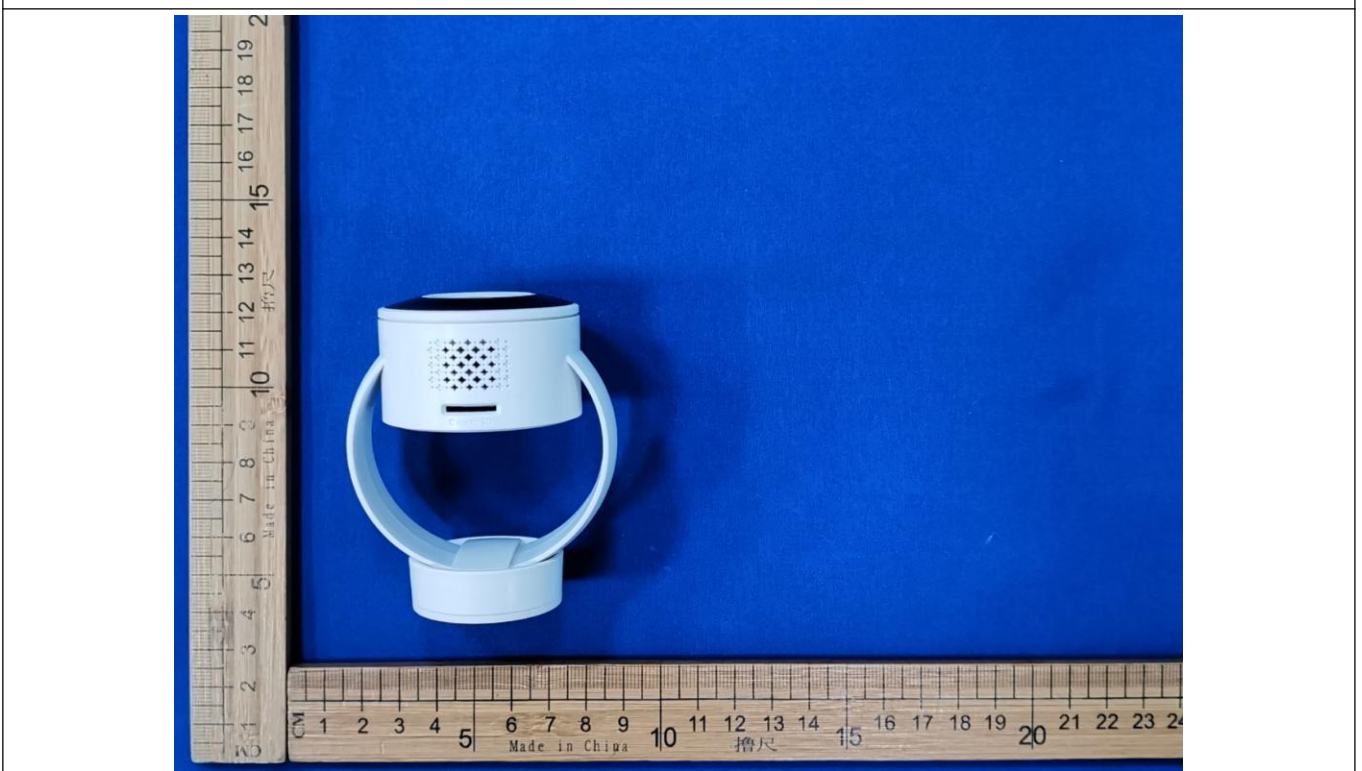


Photo 5

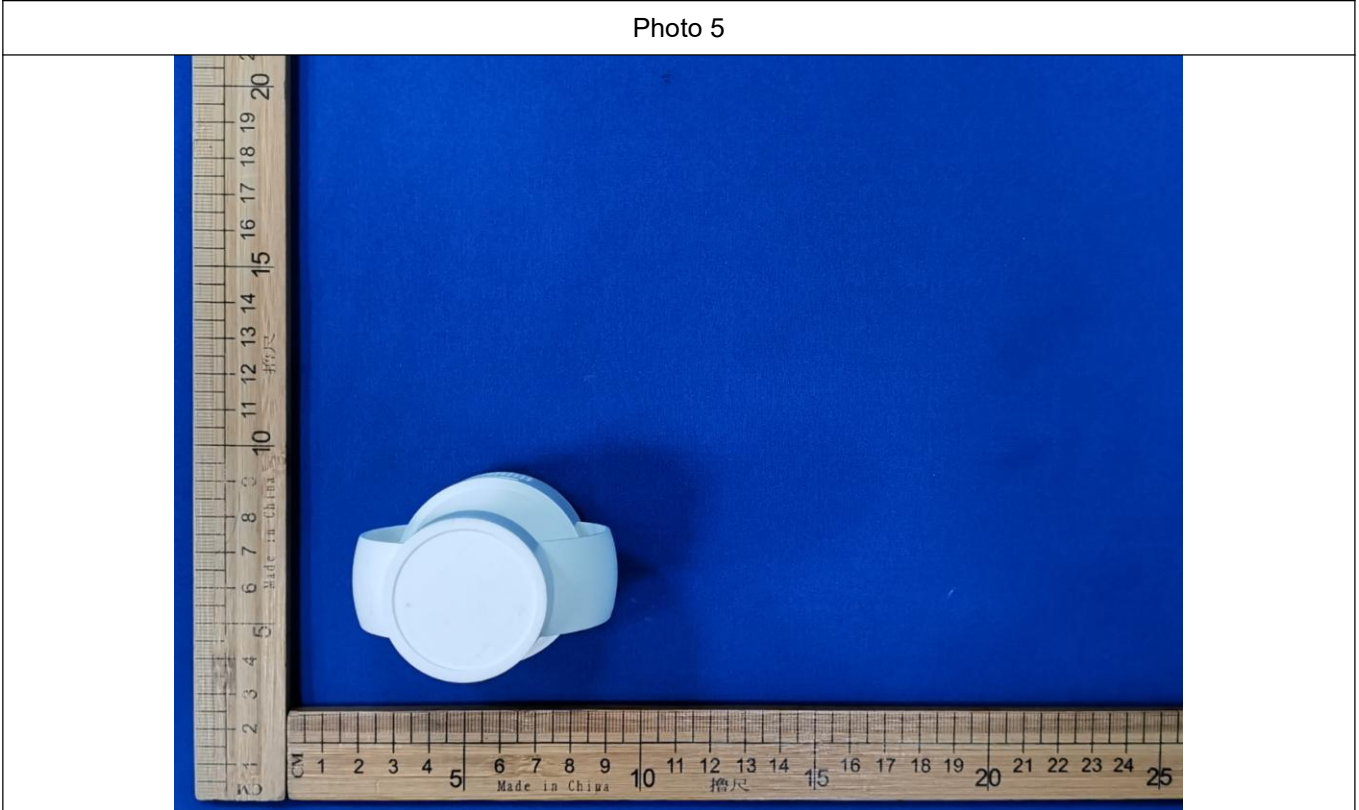


Photo 6



Photo 7



Photo 8



Photo 9



Internal Photographs

Photo 1



Photo 2

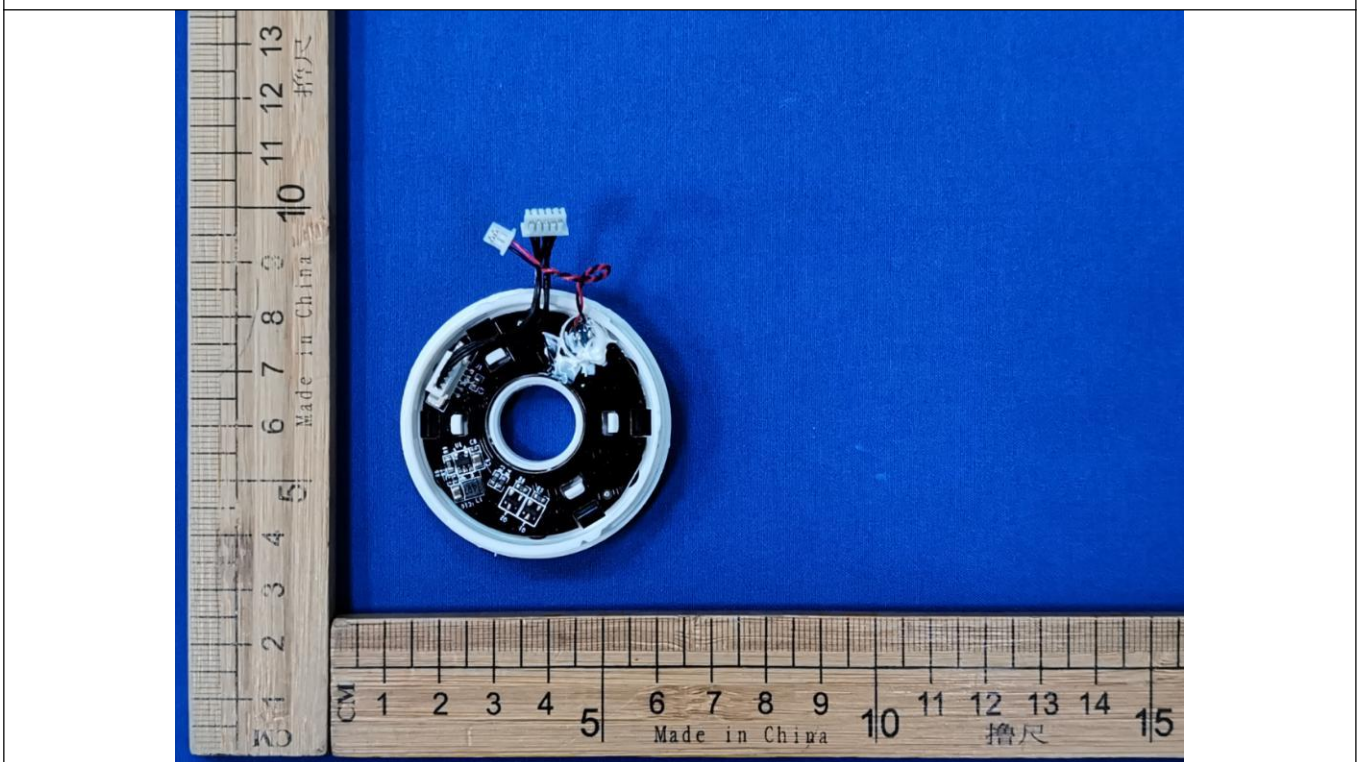


Photo 3

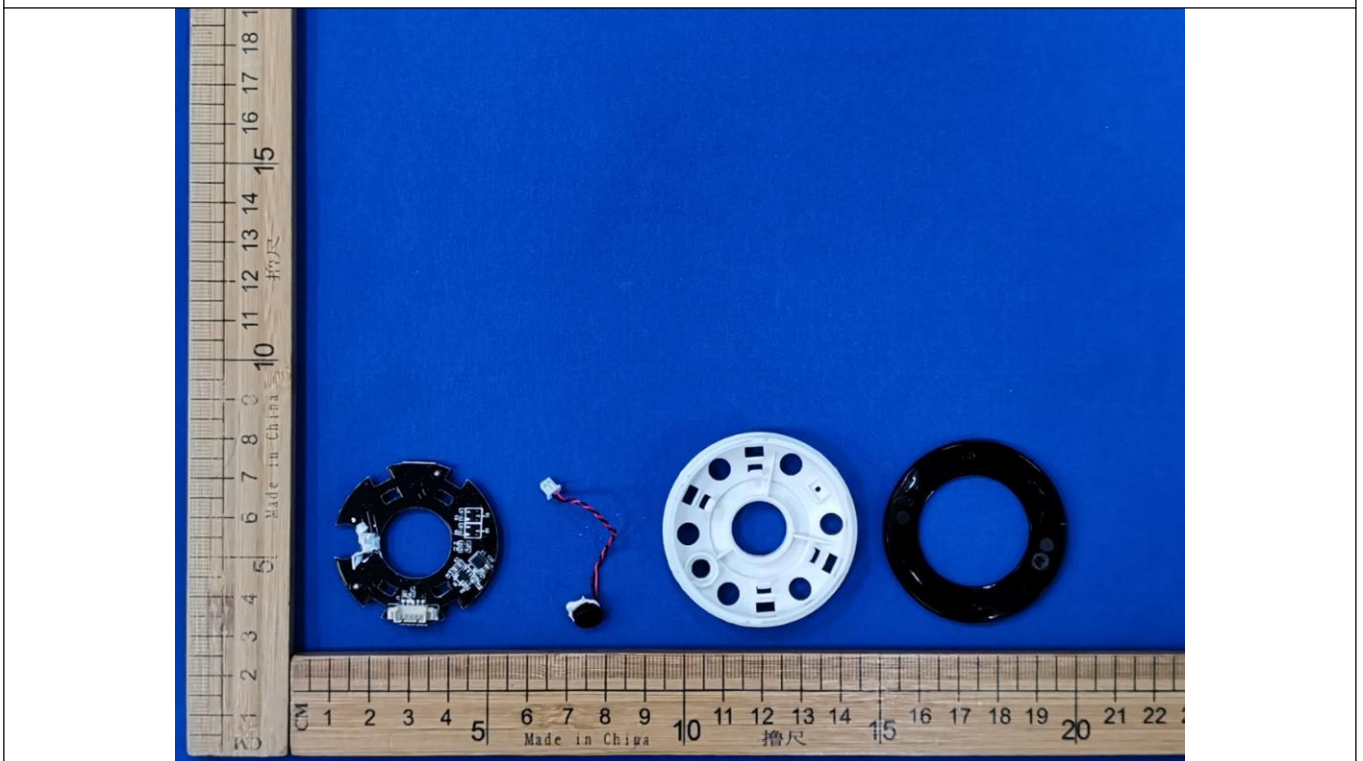


Photo 4

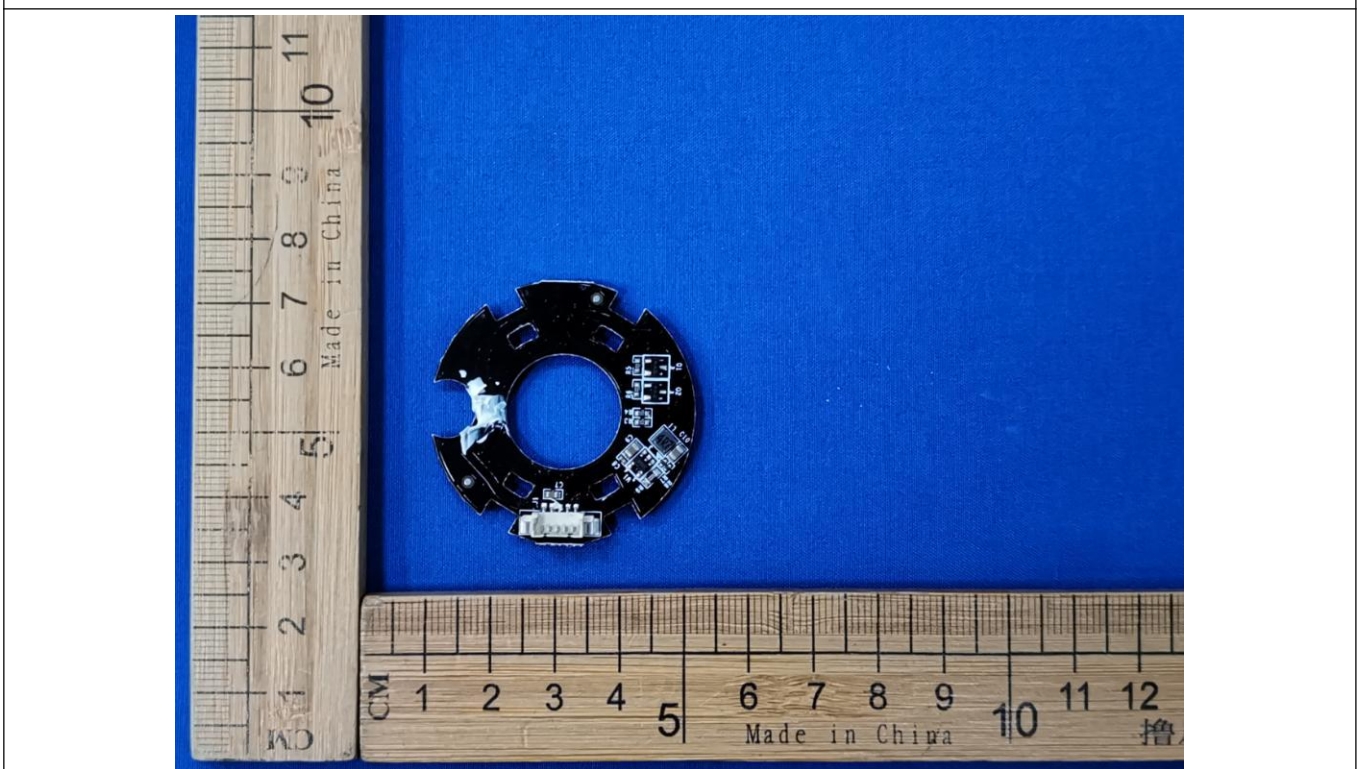


Photo 5

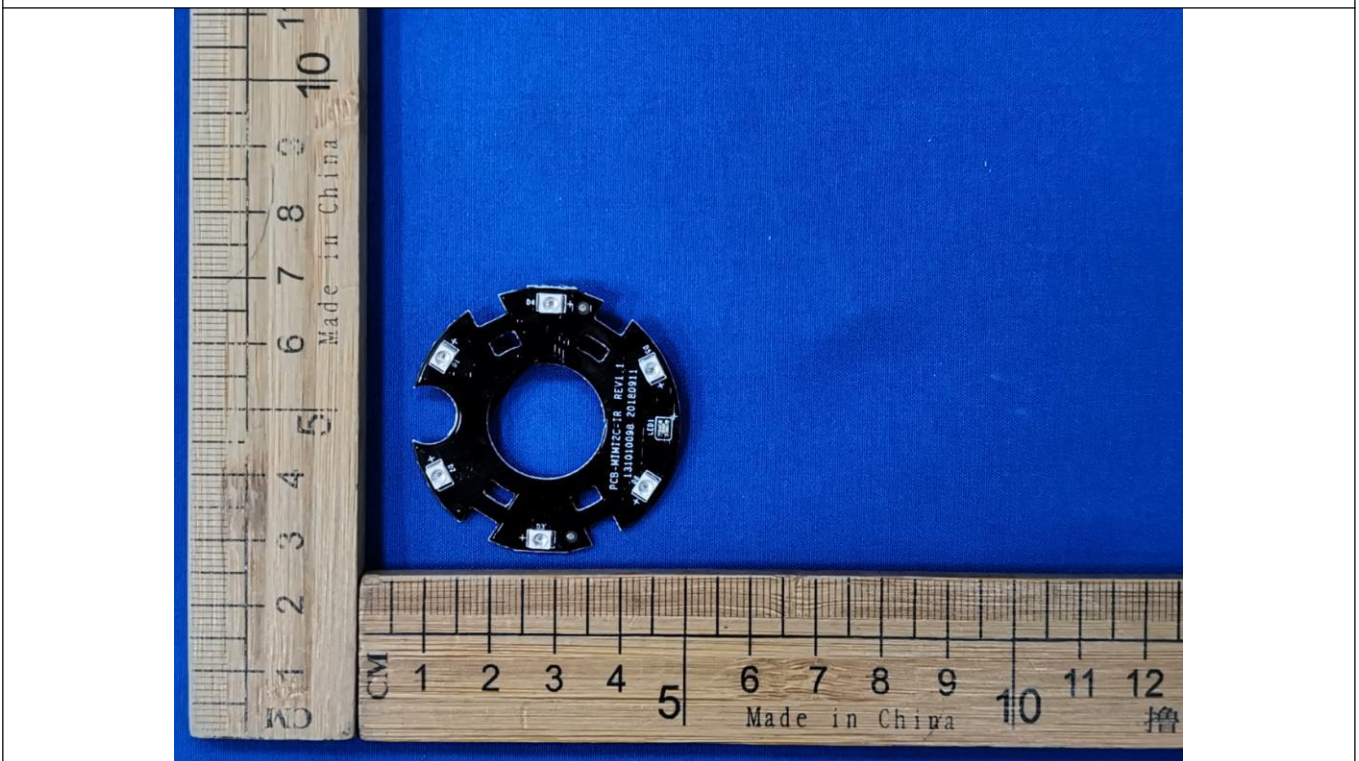


Photo 6

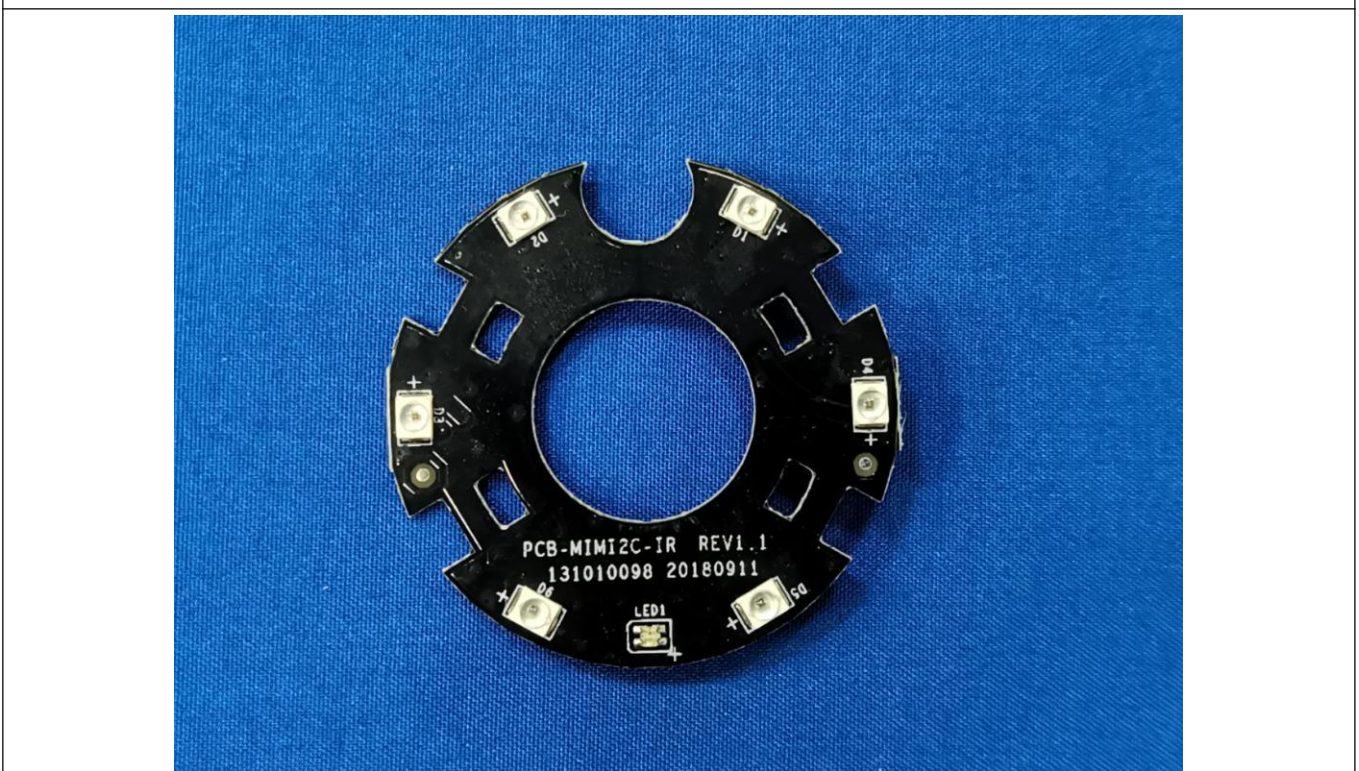


Photo 7

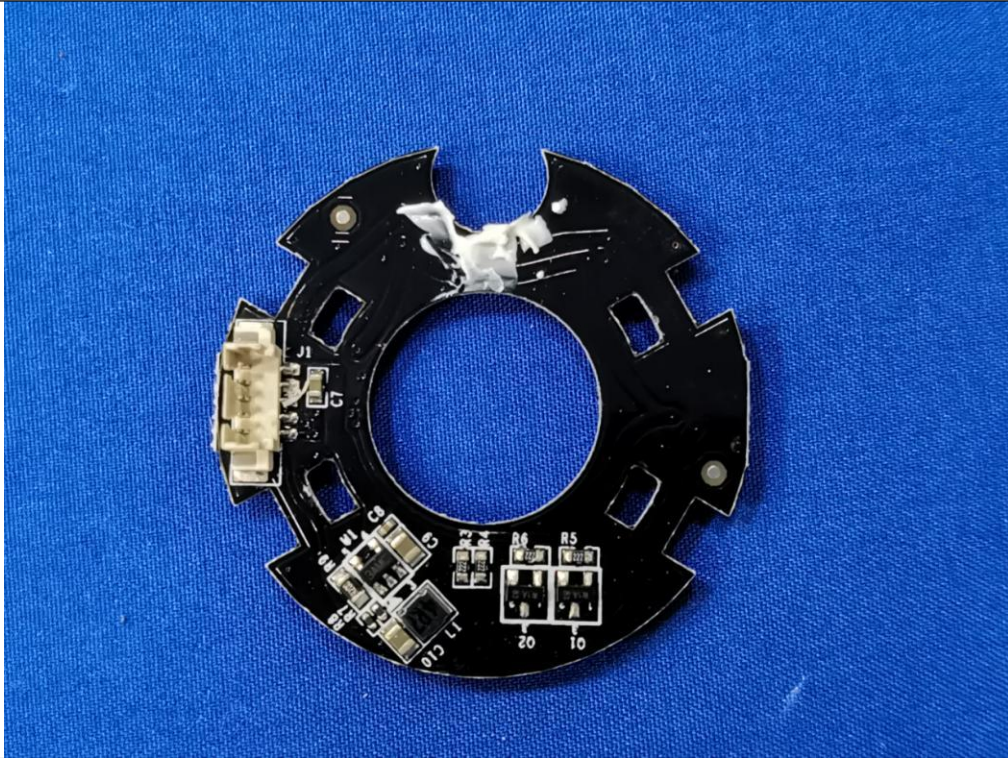


Photo 8

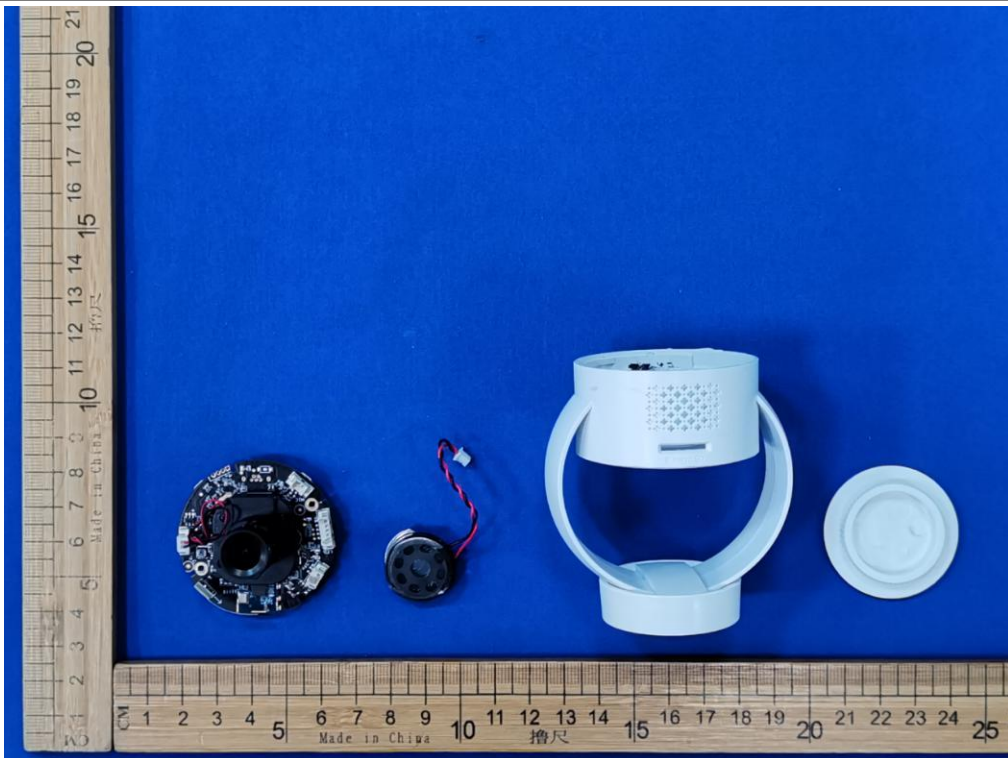


Photo 9

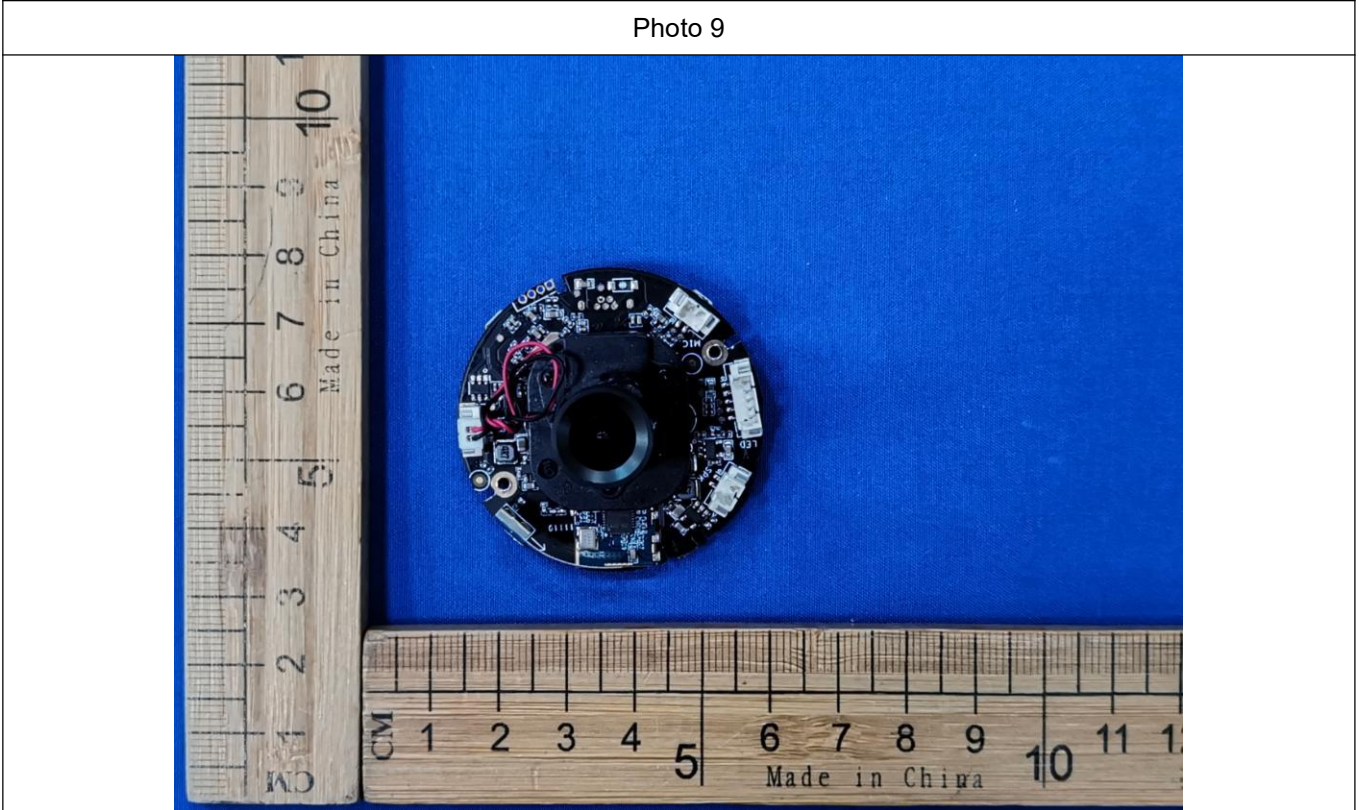


Photo 10

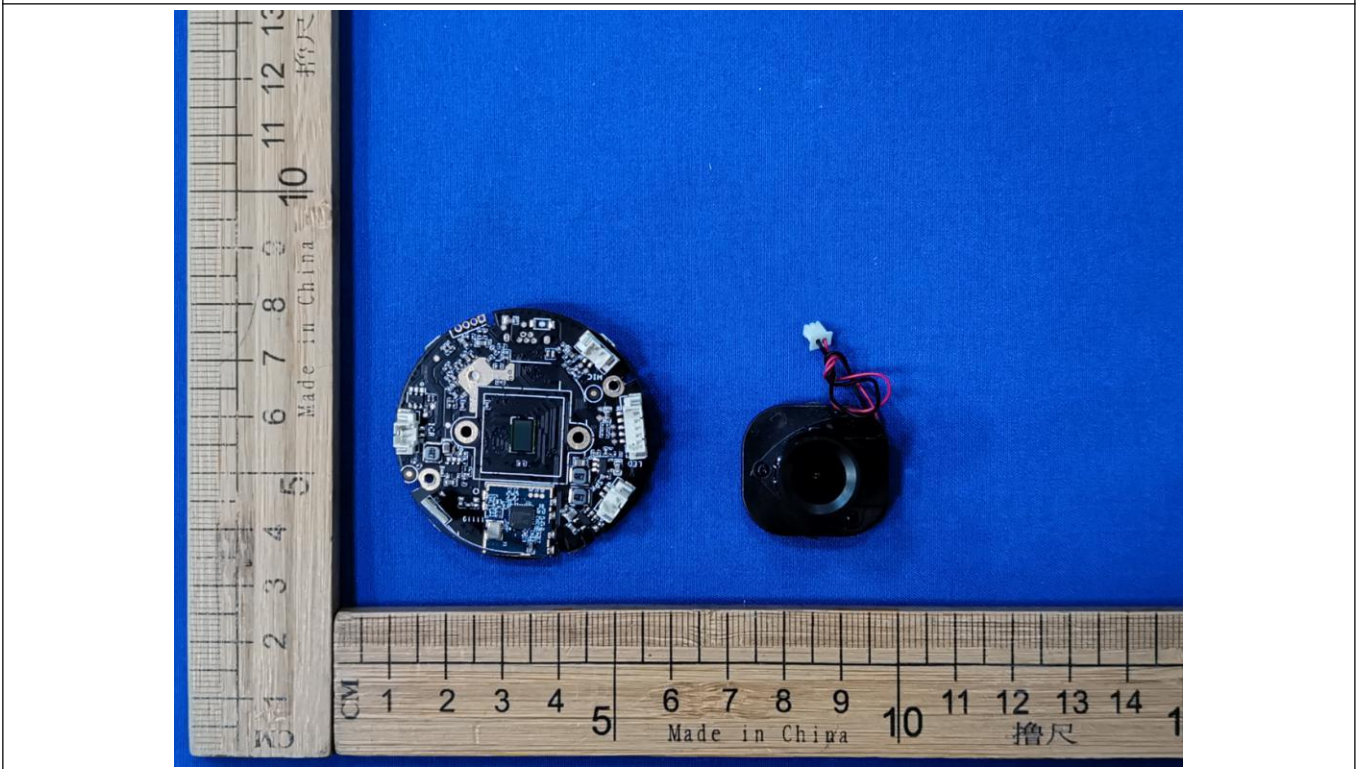


Photo 11



Photo 12

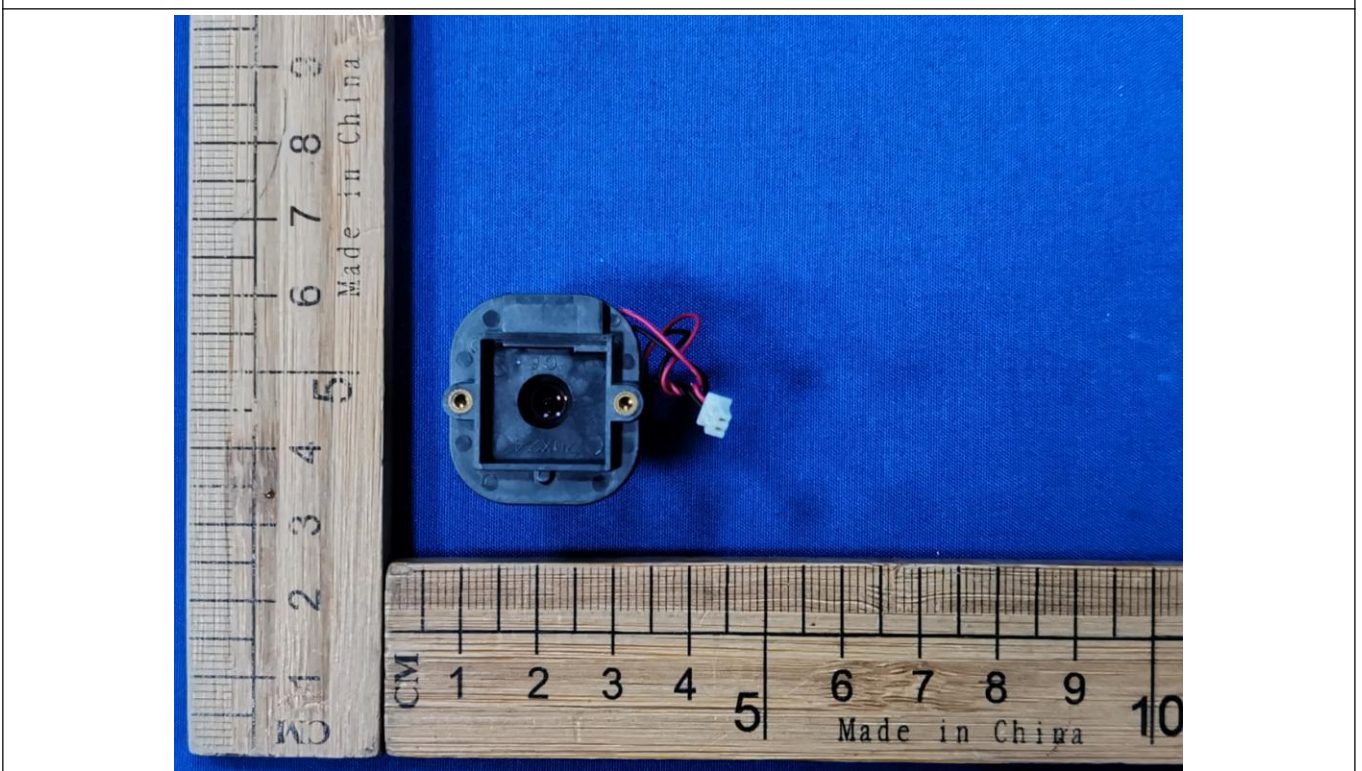


Photo 13

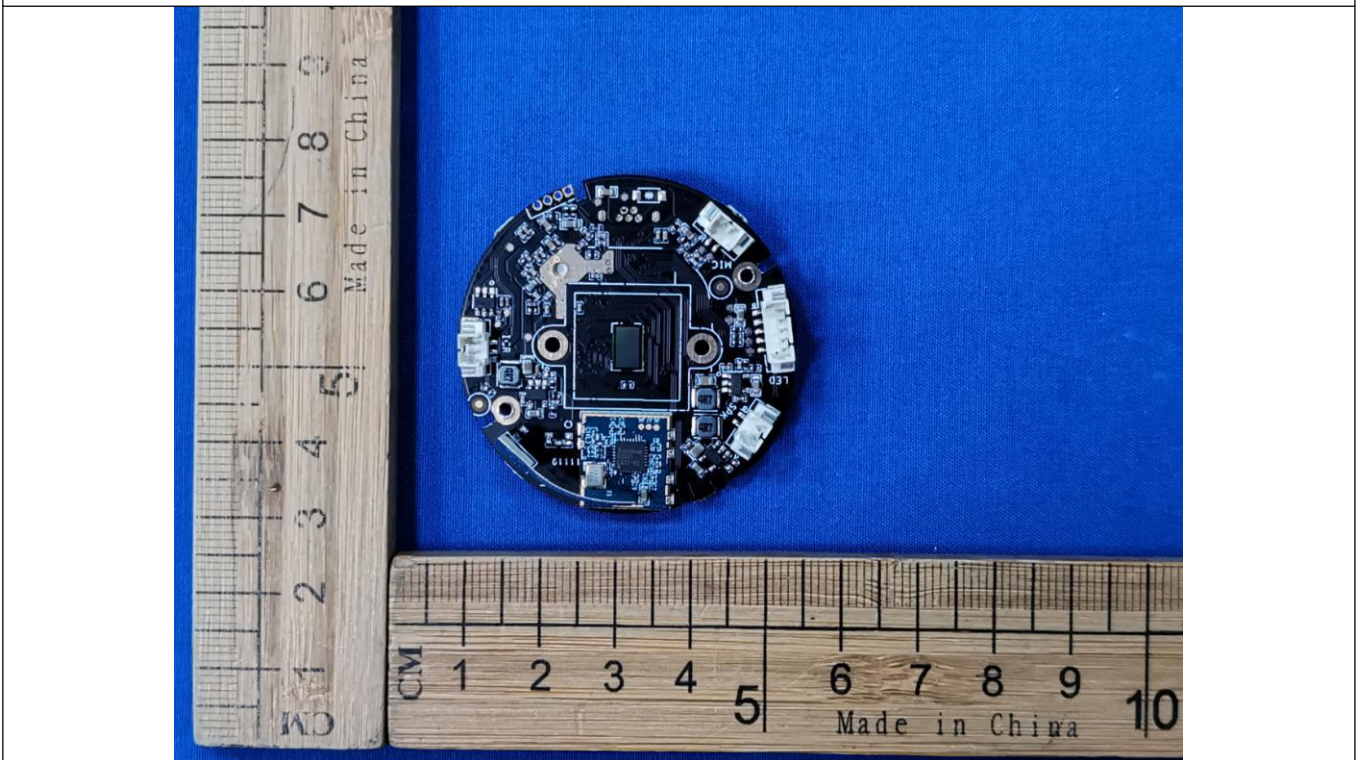


Photo 14

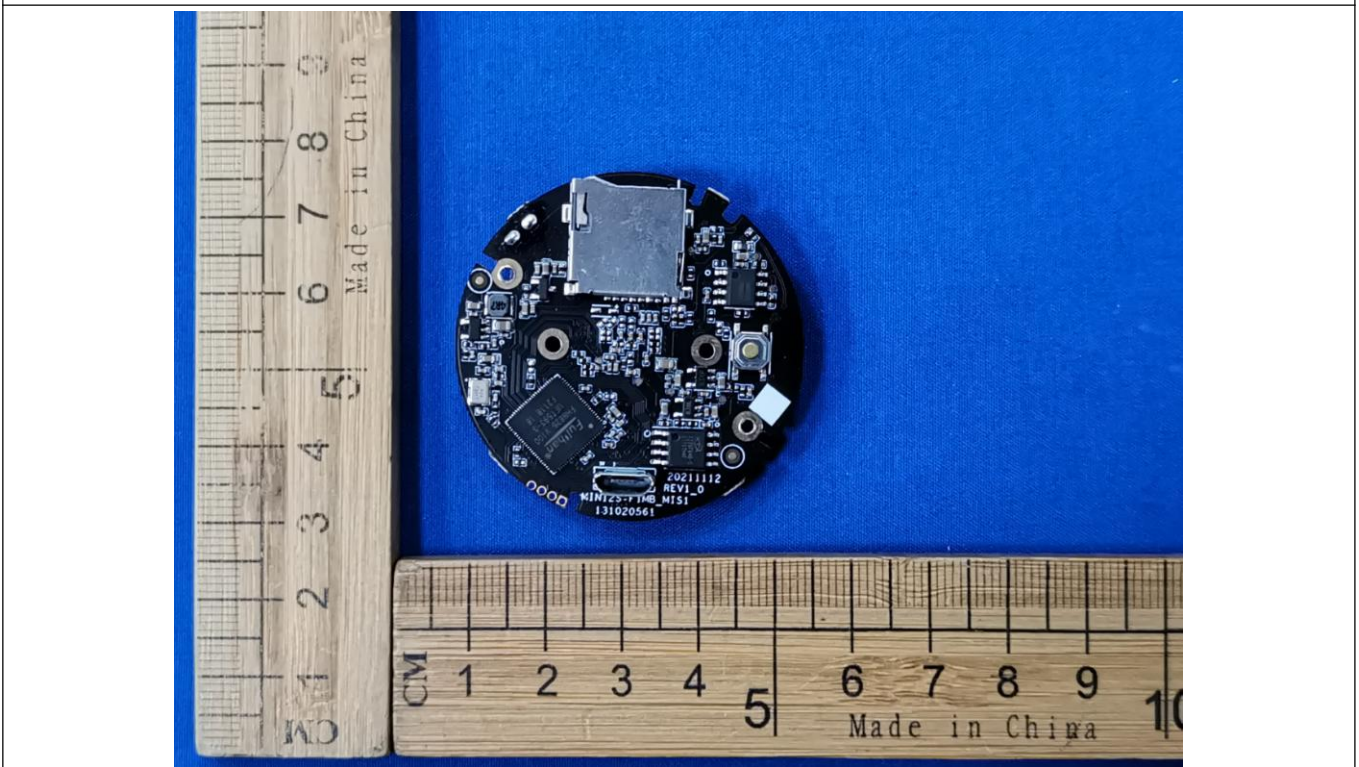


Photo 15

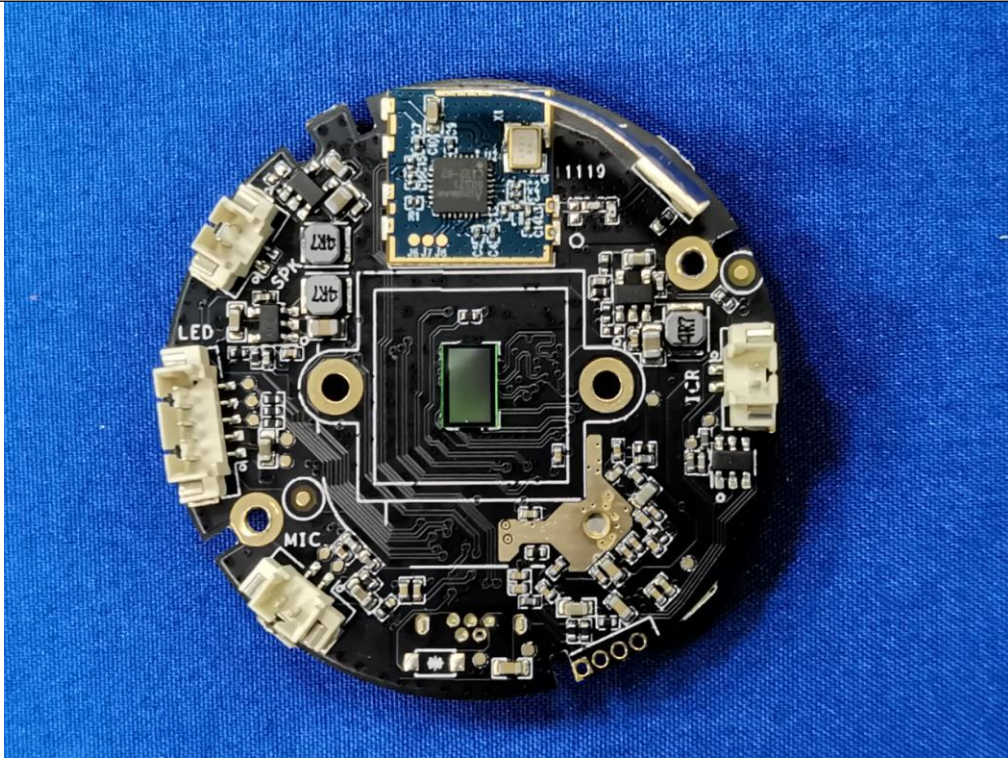


Photo 16



Photo 17

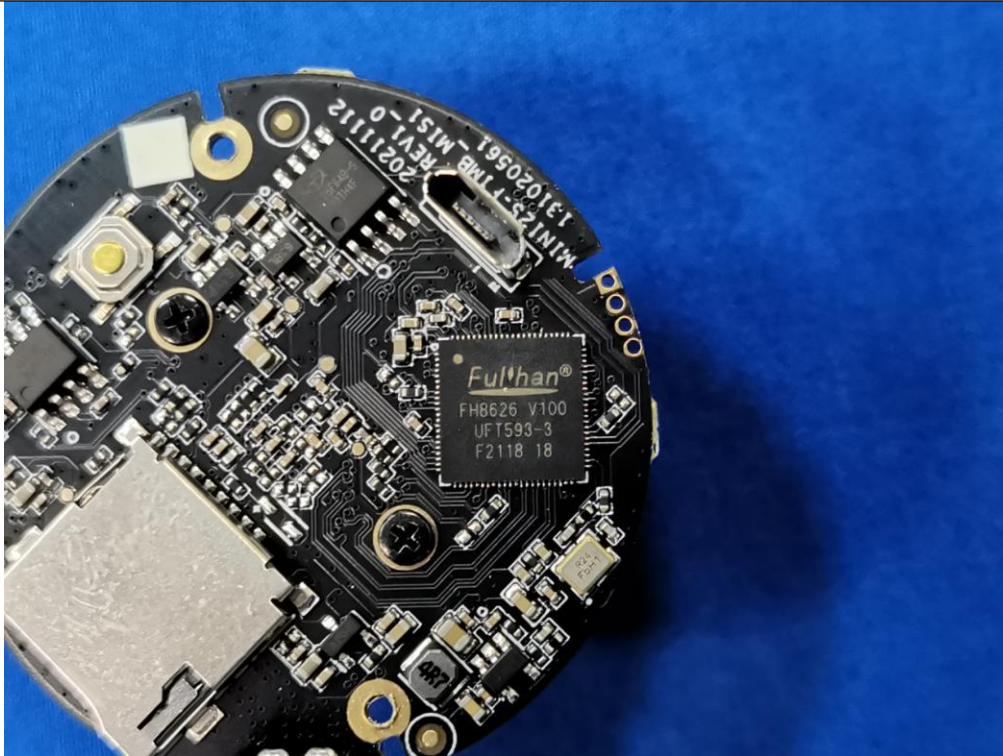


Photo 18

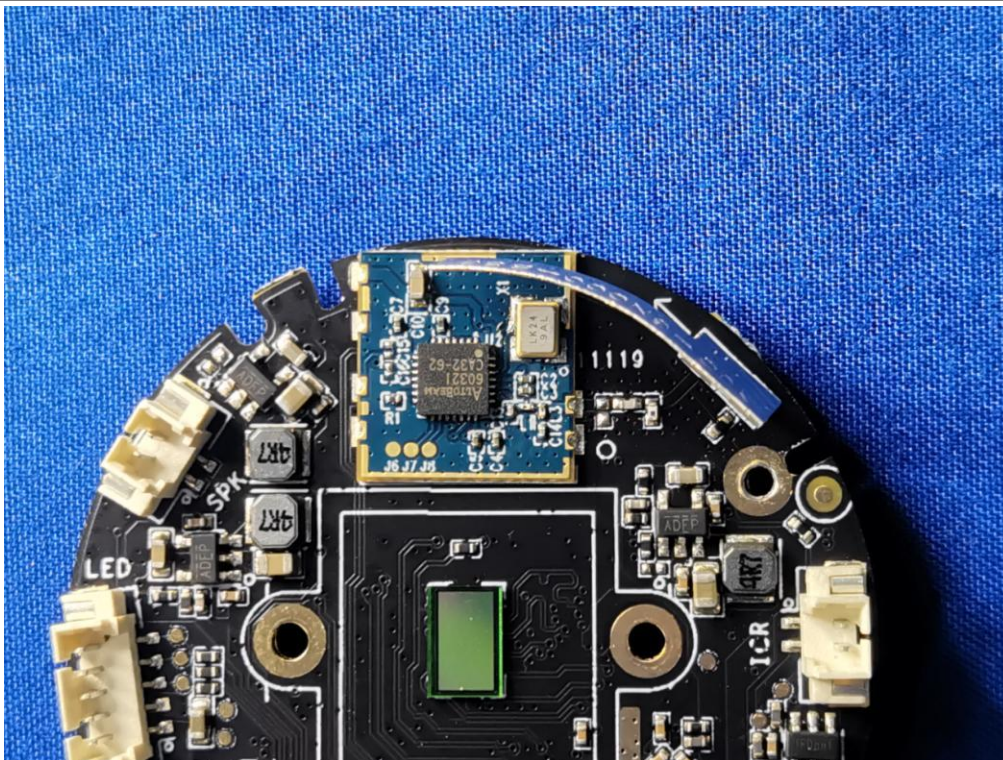
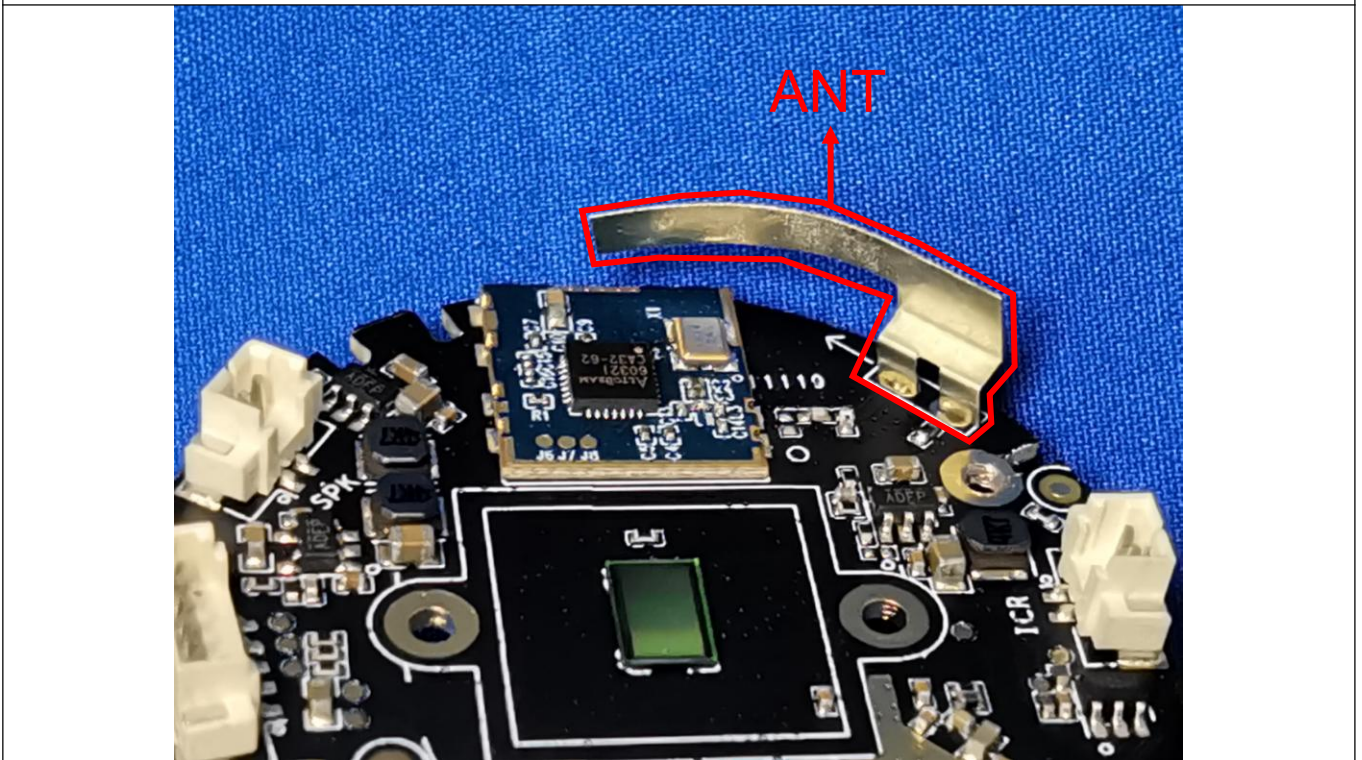


Photo 19



--THE END--