

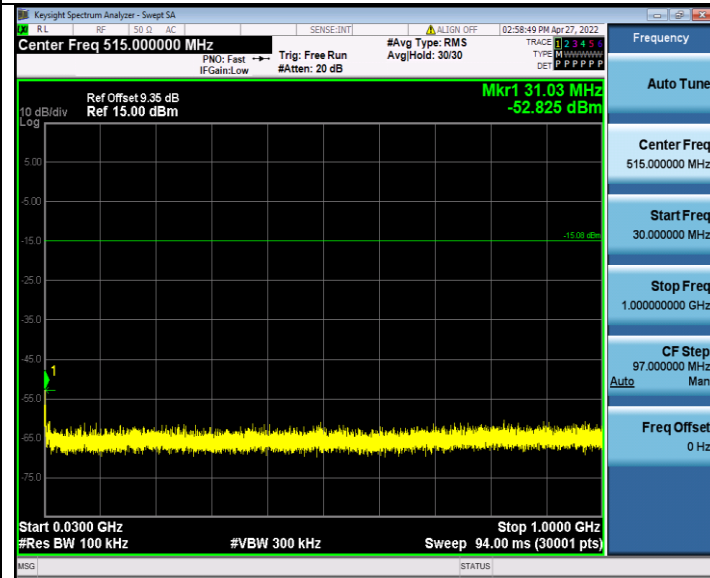
802.11g



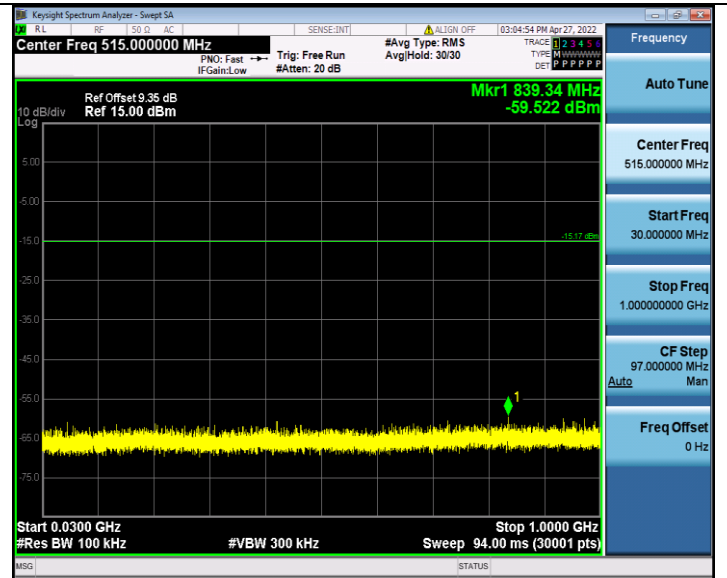
CH06



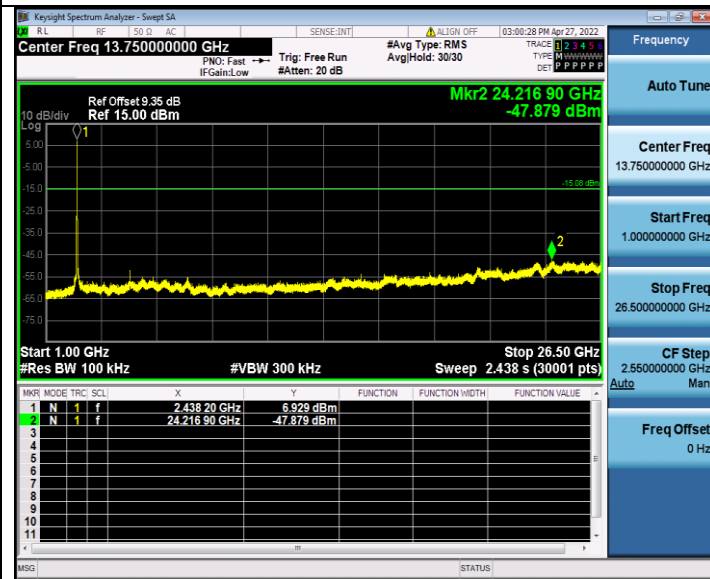
CH11



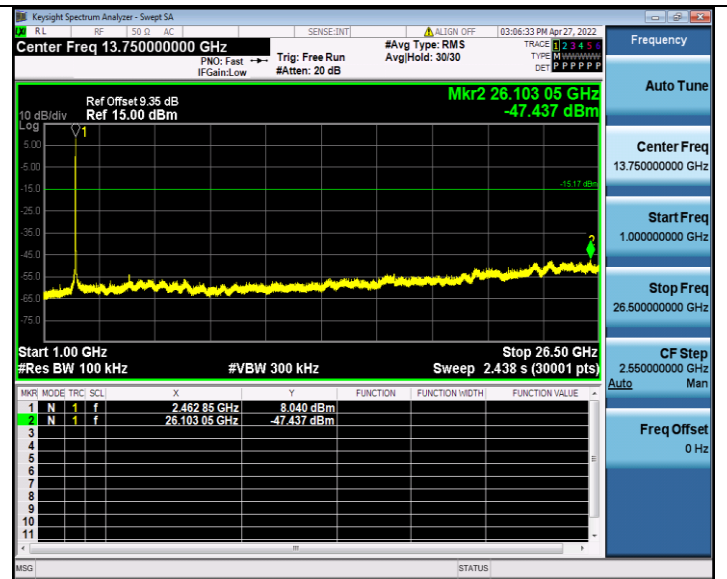
30MHz-1GHz



30MHz-1GHz

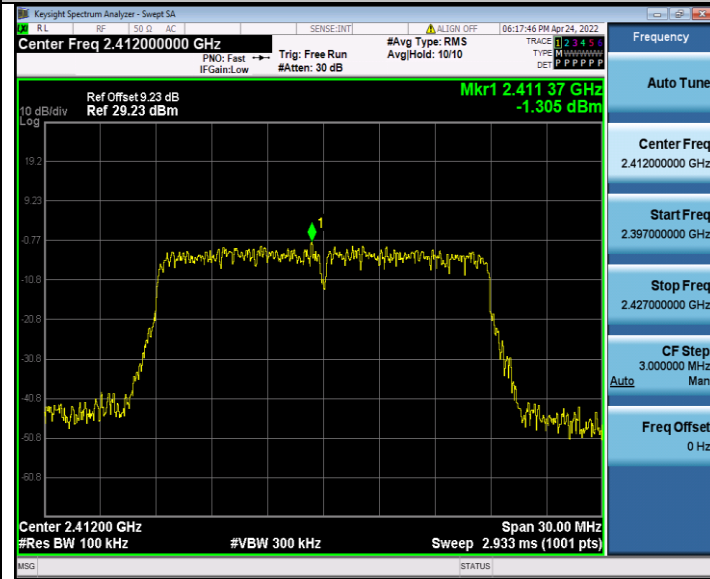


1GHz-26.5GHz



1GHz-26.5GHz

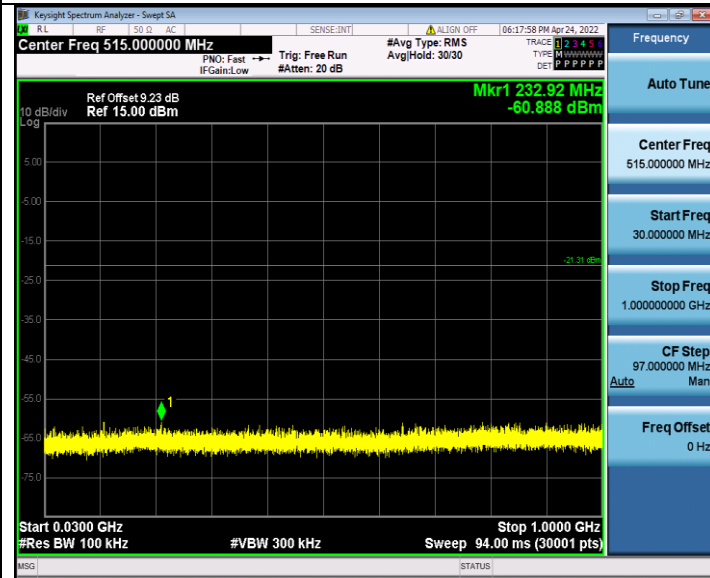
802.11n HT20



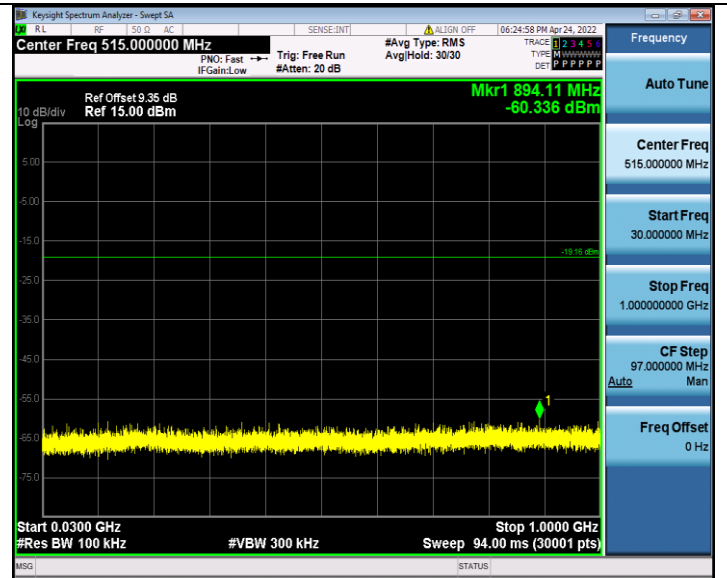
CH01



CH06



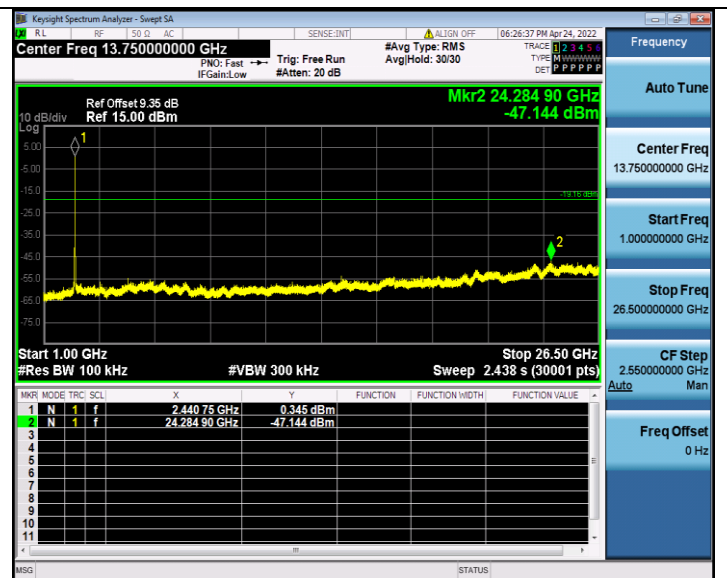
30MHz-1GHz



30MHz-1GHz



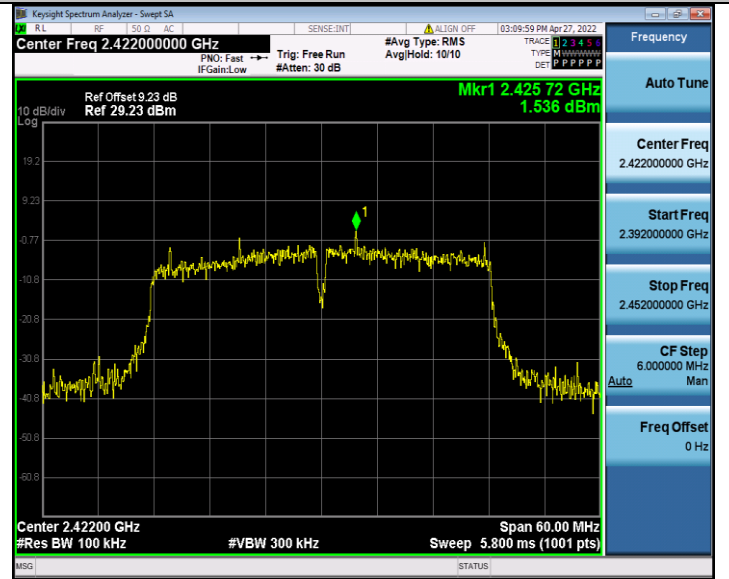
1GHz-26.5GHz



1GHz-26.5GHz

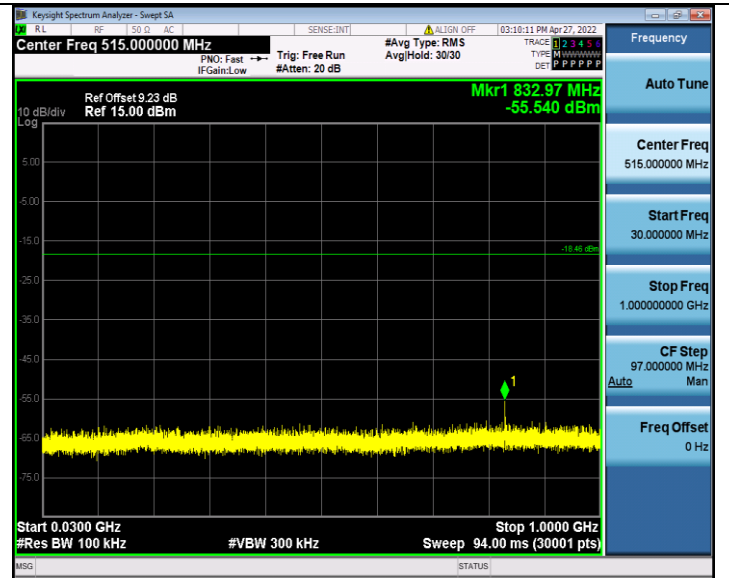
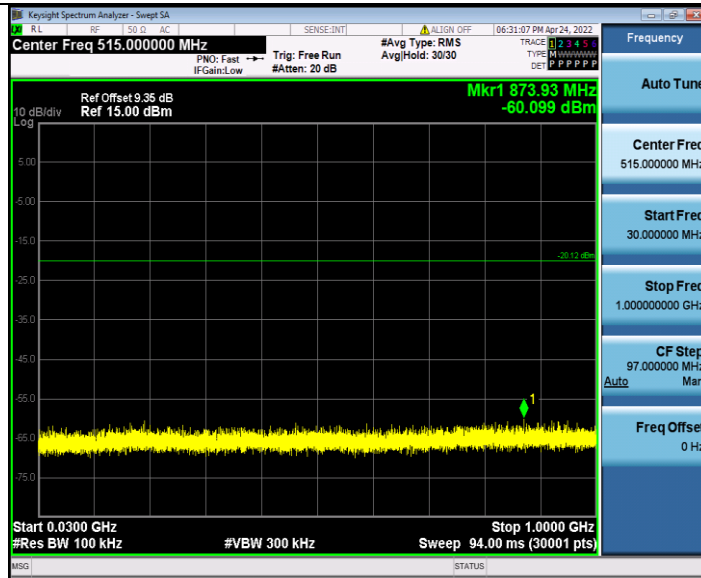
802.11n HT20

802.11n HT40



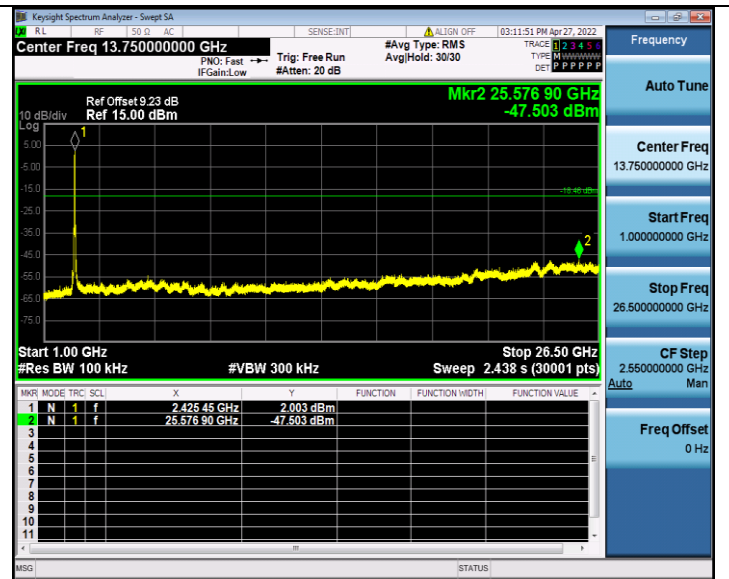
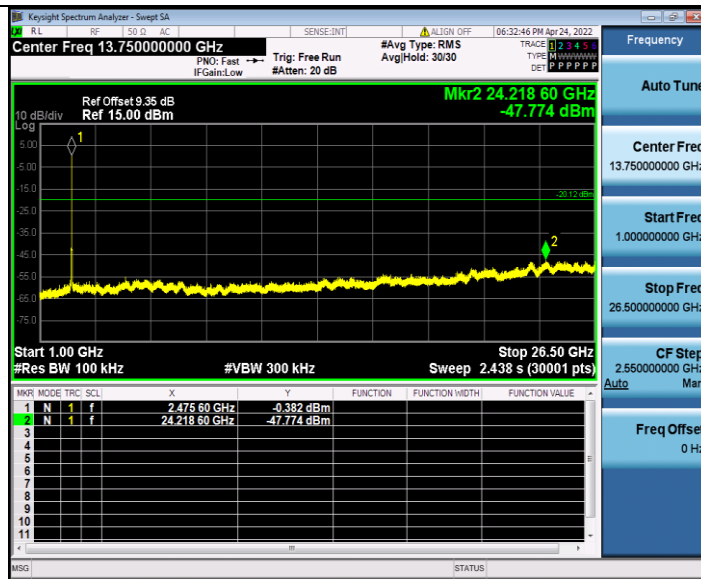
CH11

CH03



30MHz-1GHz

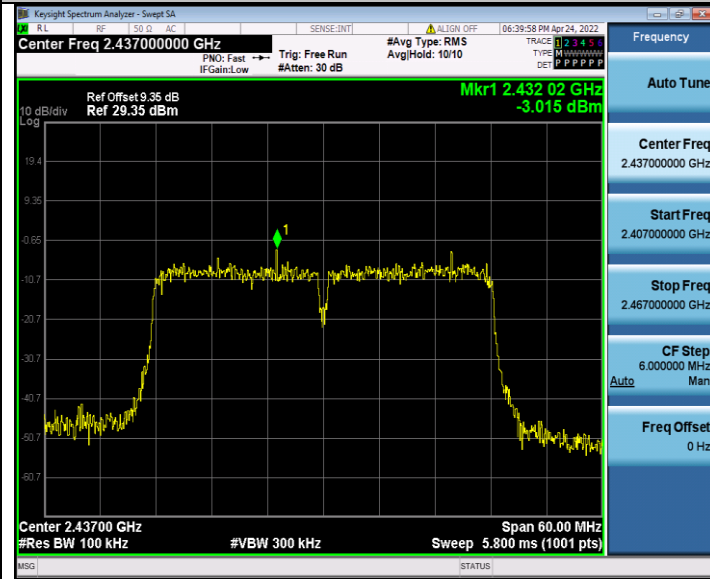
30MHz-1GHz



1GHz-26.5GHz

1GHz-26.5GHz

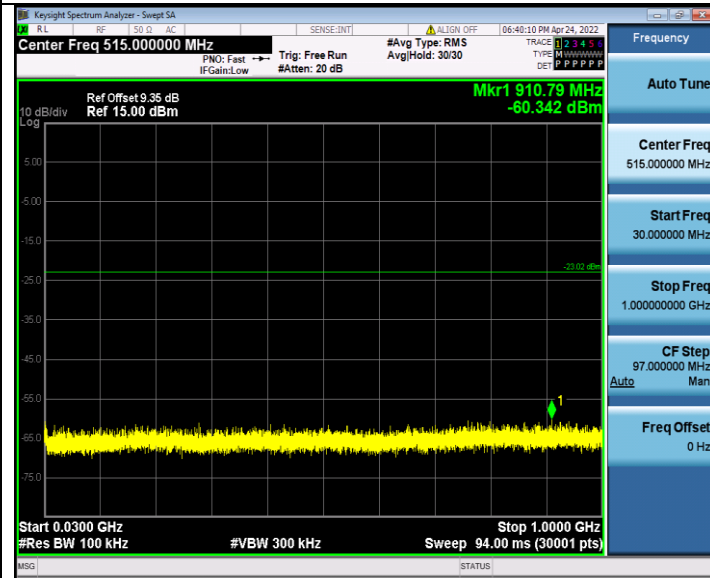
802.11n HT40



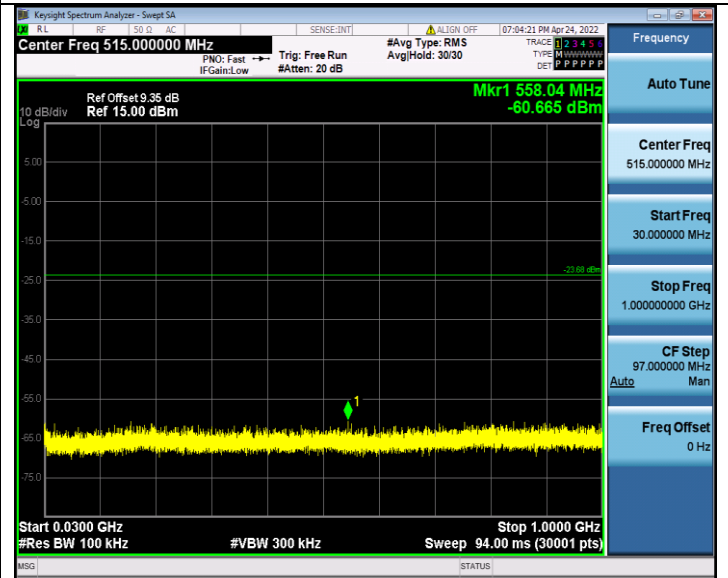
CH06



CH09



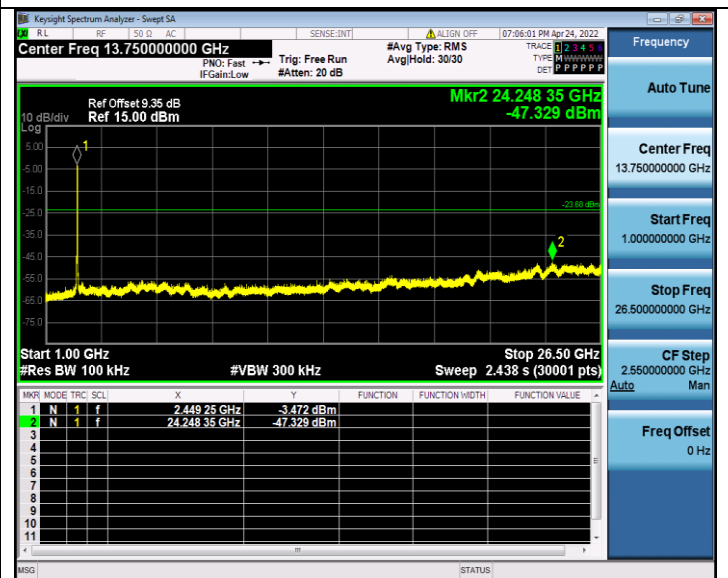
30MHz-1GHz



30MHz-1GHz



1GHz-26.5GHz



1GHz-26.5GHz

4.7. Antenna Requirement

Standard Applicable

For intentional device, according to FCC 47 CFR Section 15.203, an intentional radiator shall be designed to ensure that no antenna other than that furnished by the responsible party shall be used with the device.

And according to FCC 47 CFR Section 15.247 (c), if transmitting antennas of directional gain greater than 6dBi are used, the power shall be reduced by the amount in dB that the directional gain of the antenna exceeds 6dBi.

Antenna Information

The antenna is FPC Antenna, through the buckle stretched out, The directional gains of antenna used for transmitting is 3.67dBi.

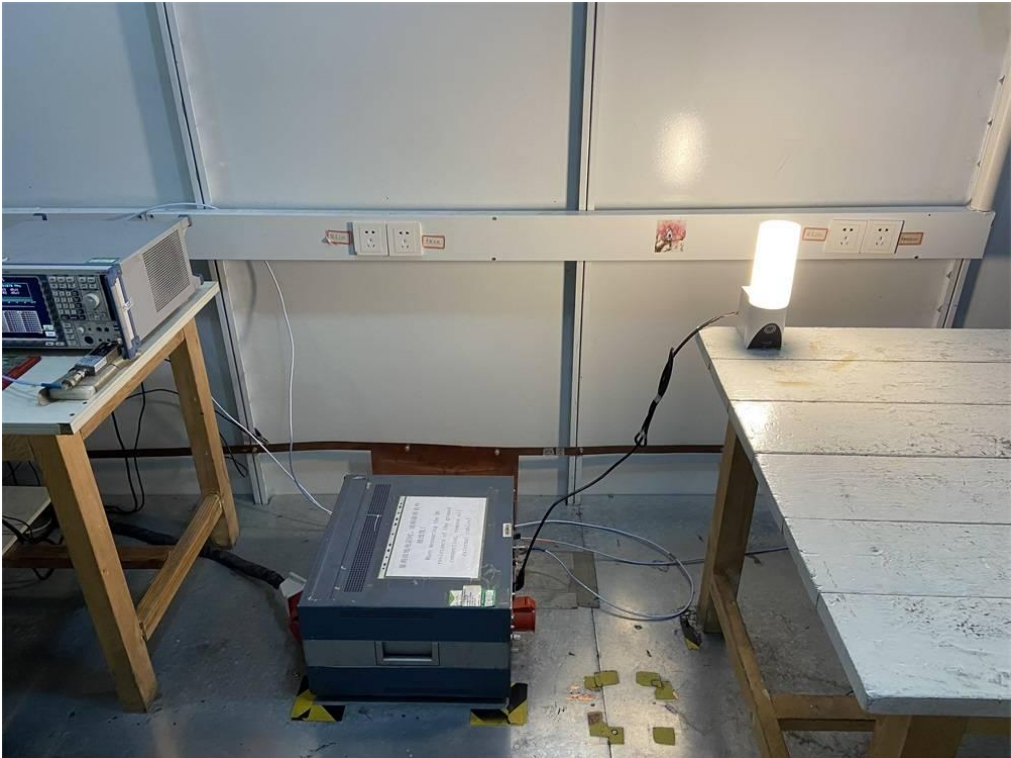
Reference to the **Internal photos**.

5. TEST SETUP PHOTOS OF THE EUT

Radiated Emission



Conducted Emission



6. EXTERNAL AND INTERNAL PHOTOS OF THE EUT

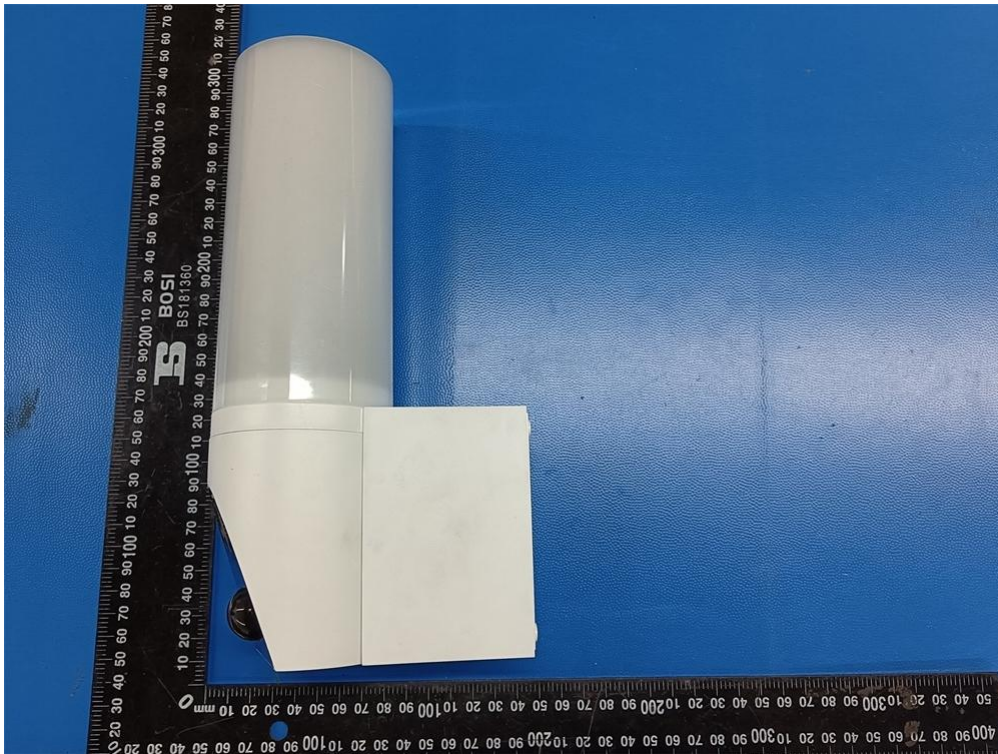


Fig. 1



Fig. 2

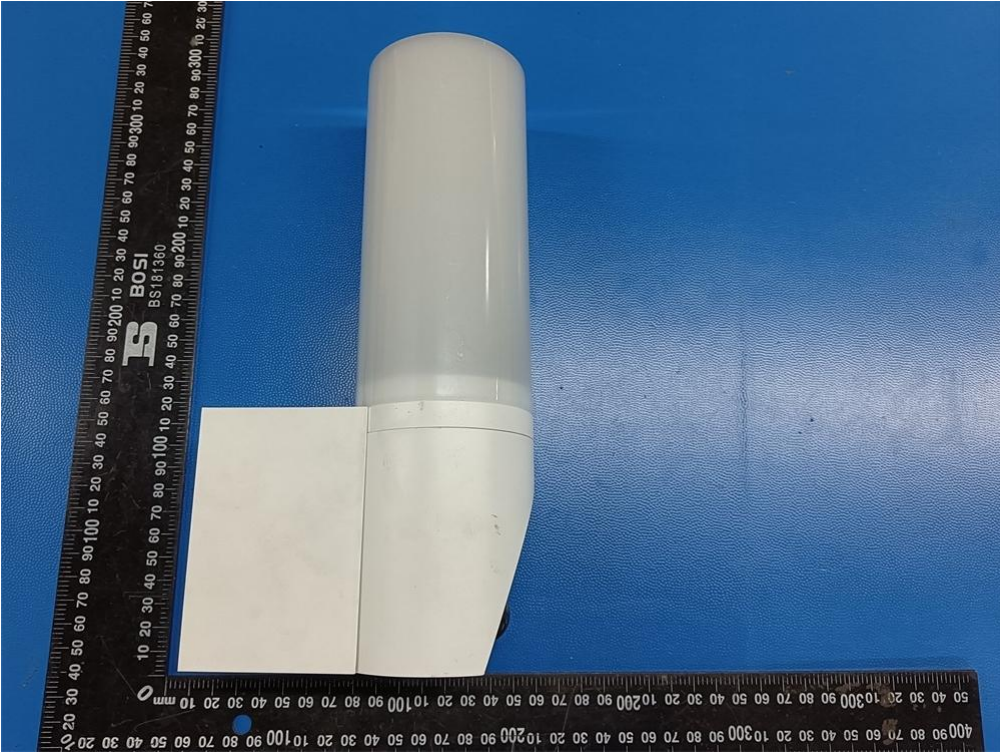


Fig. 3



Fig. 4

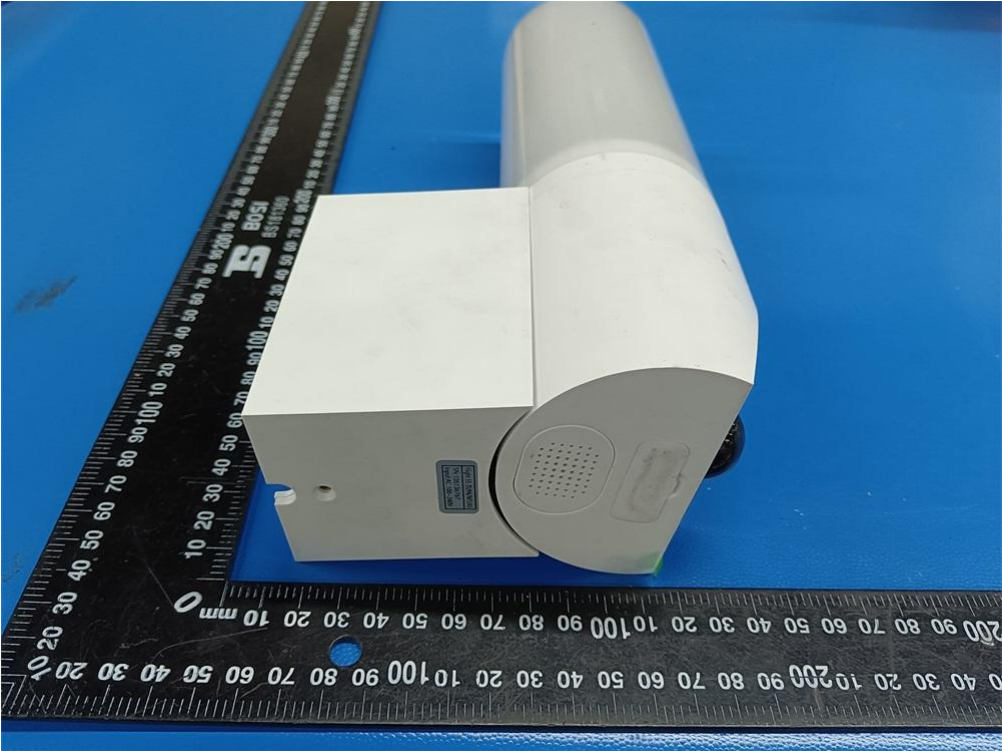


Fig. 5

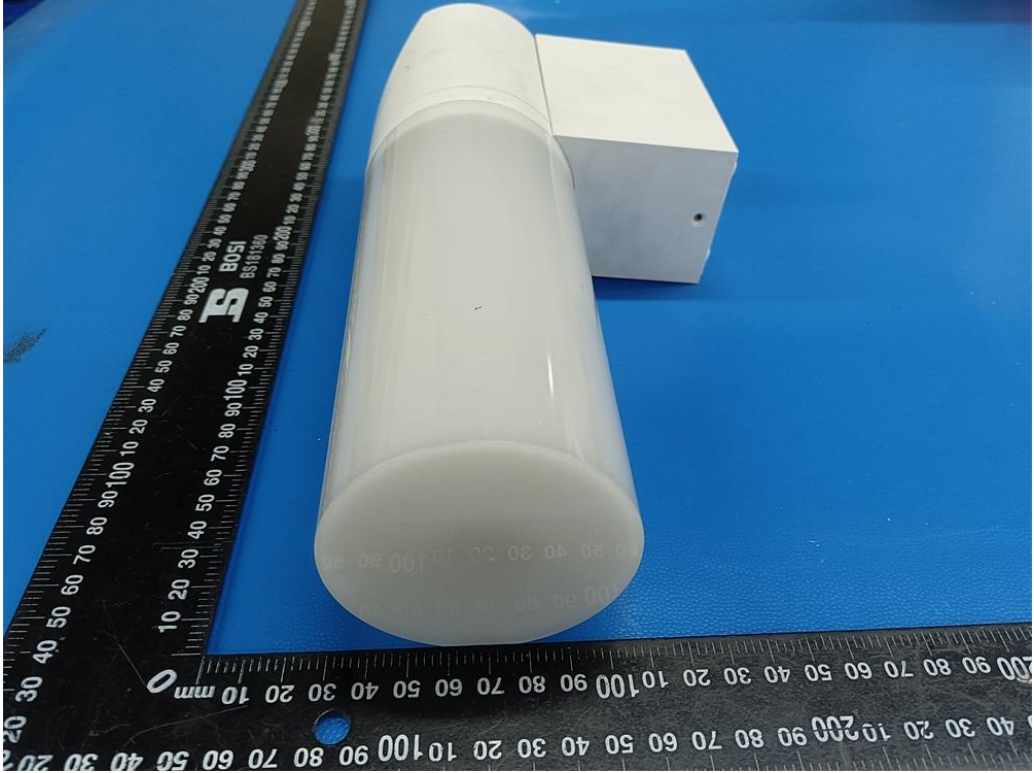


Fig. 6

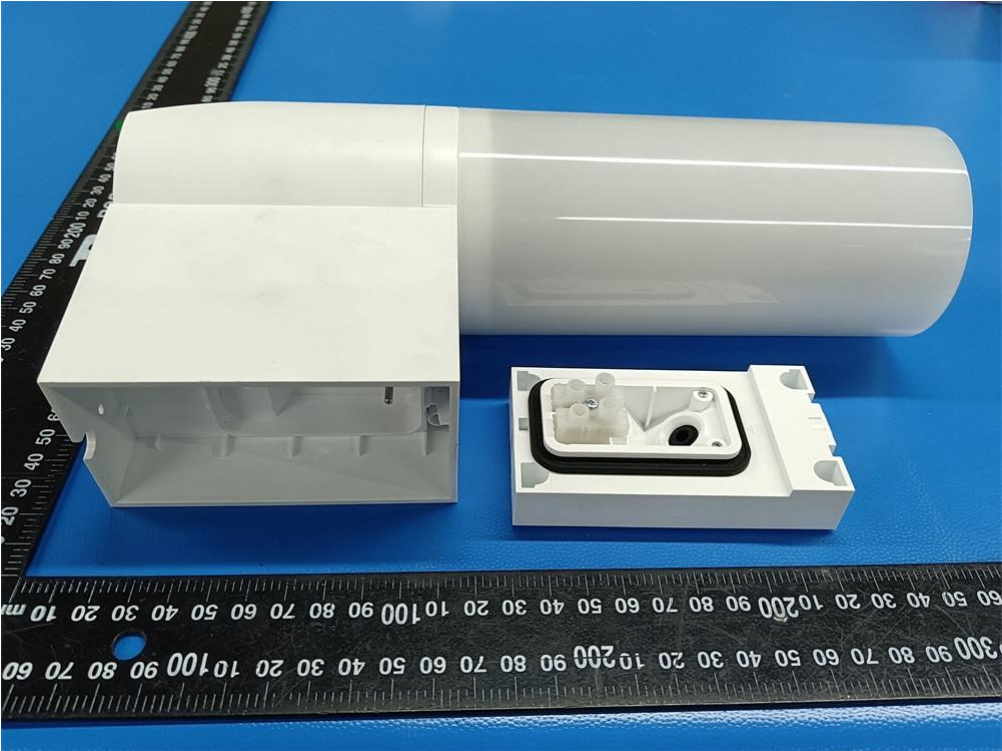


Fig. 7

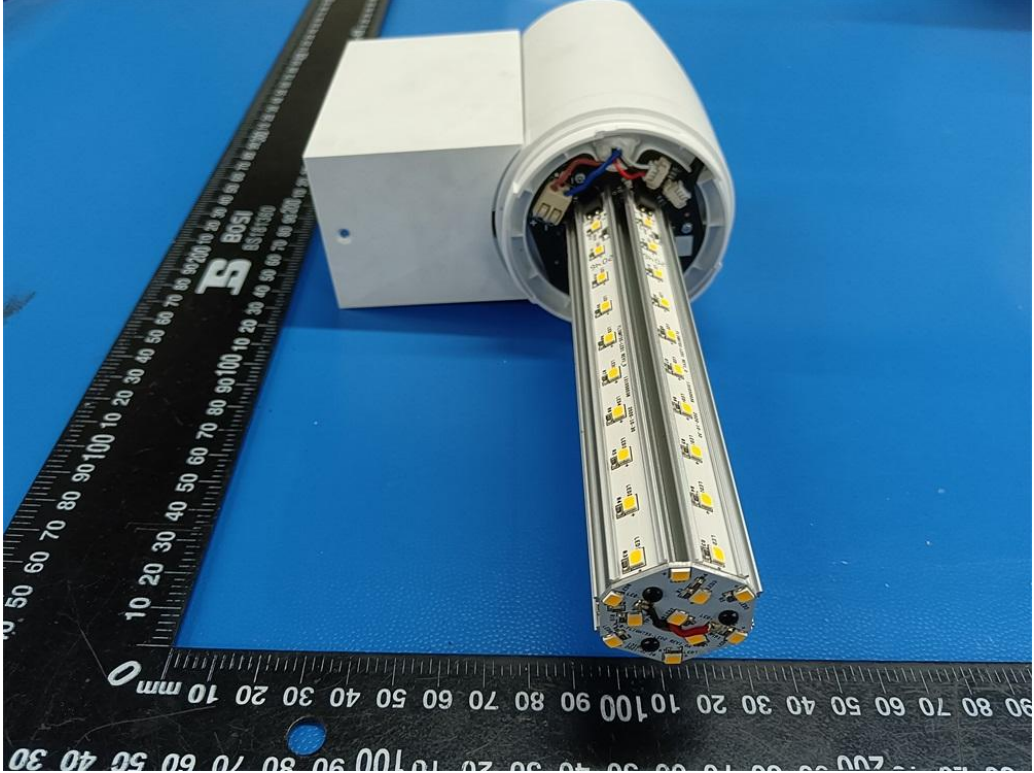


Fig. 8



Fig. 9

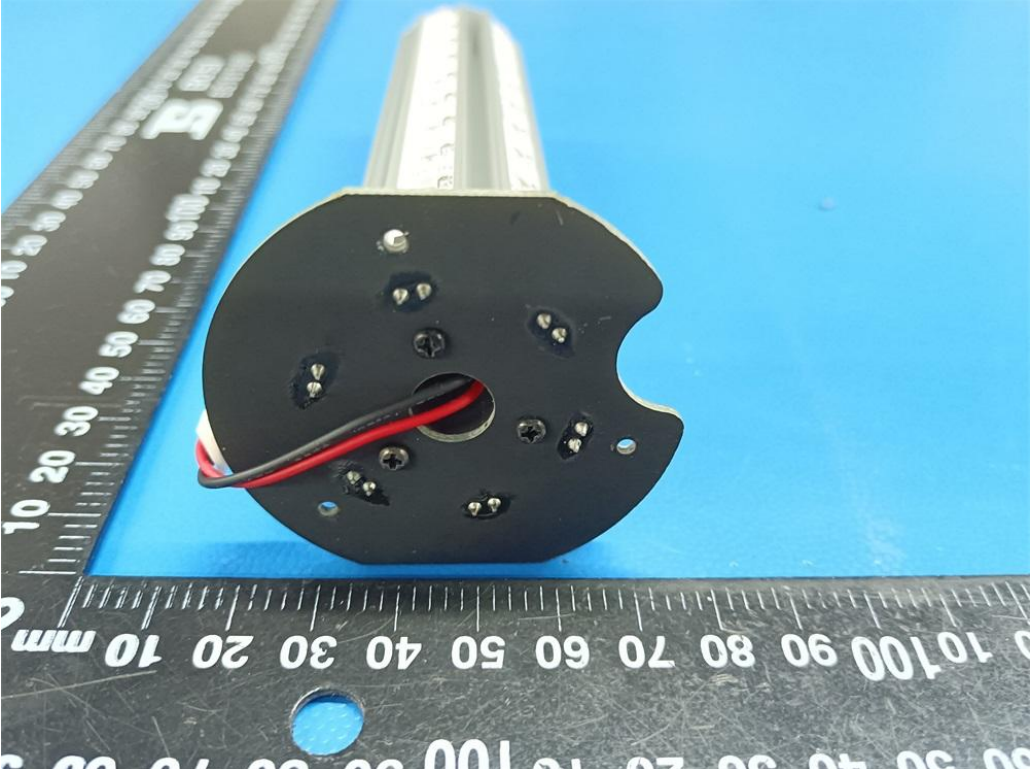


Fig. 10



Fig. 11

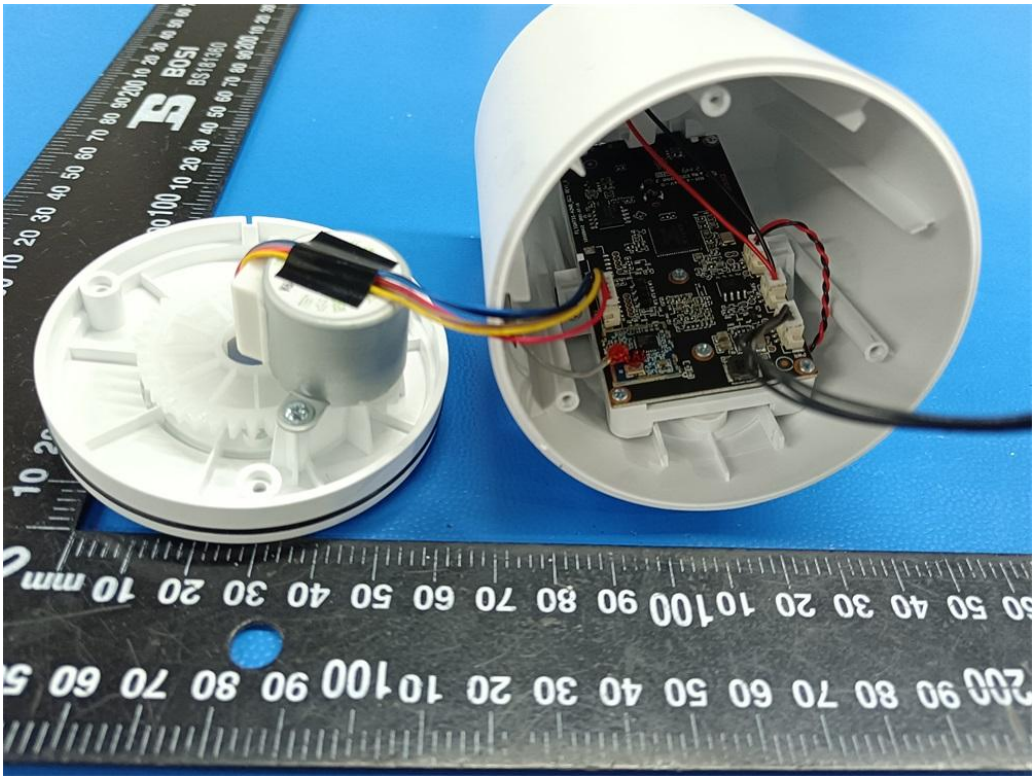


Fig. 12

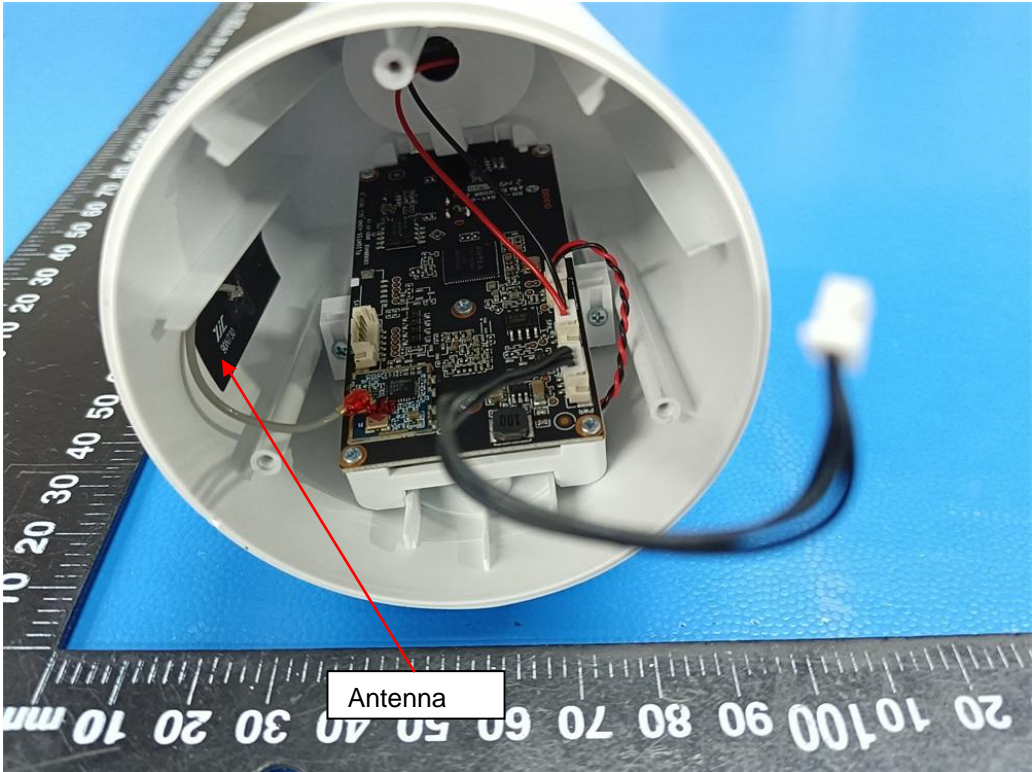


Fig. 13

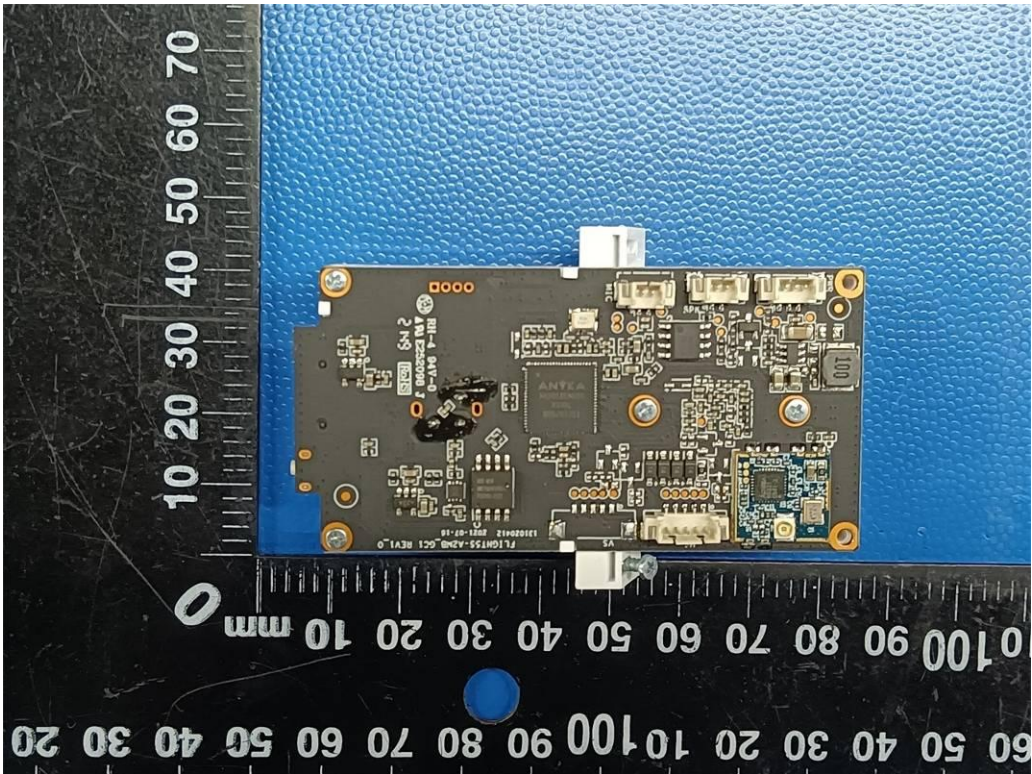


Fig. 14

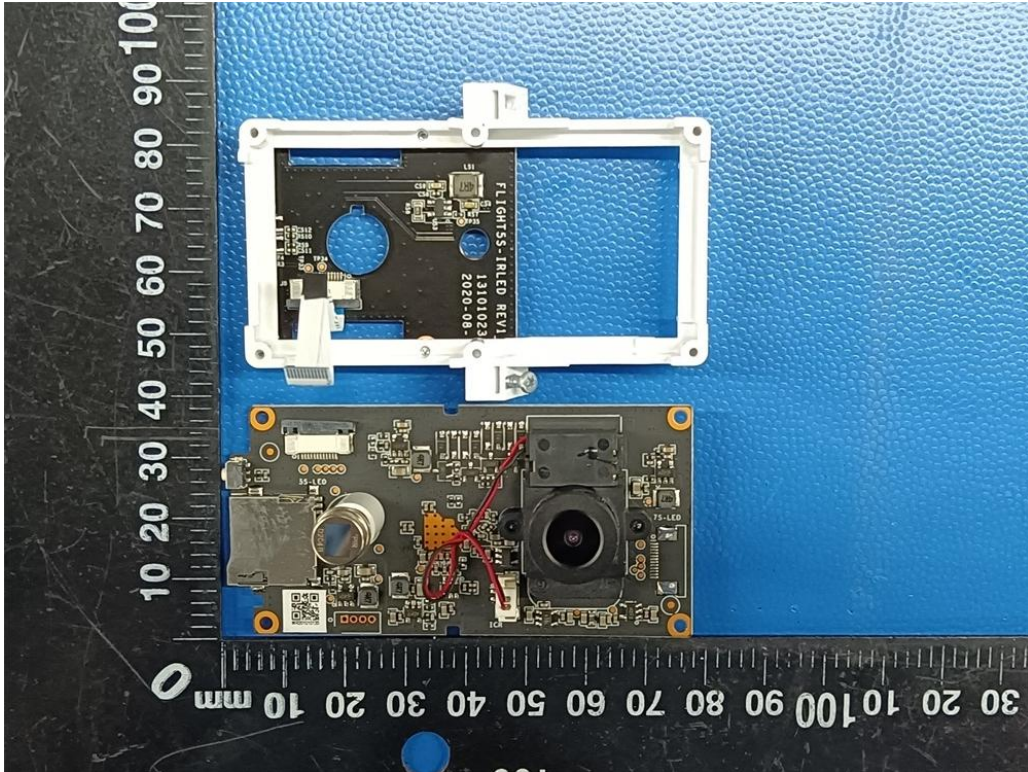


Fig. 15

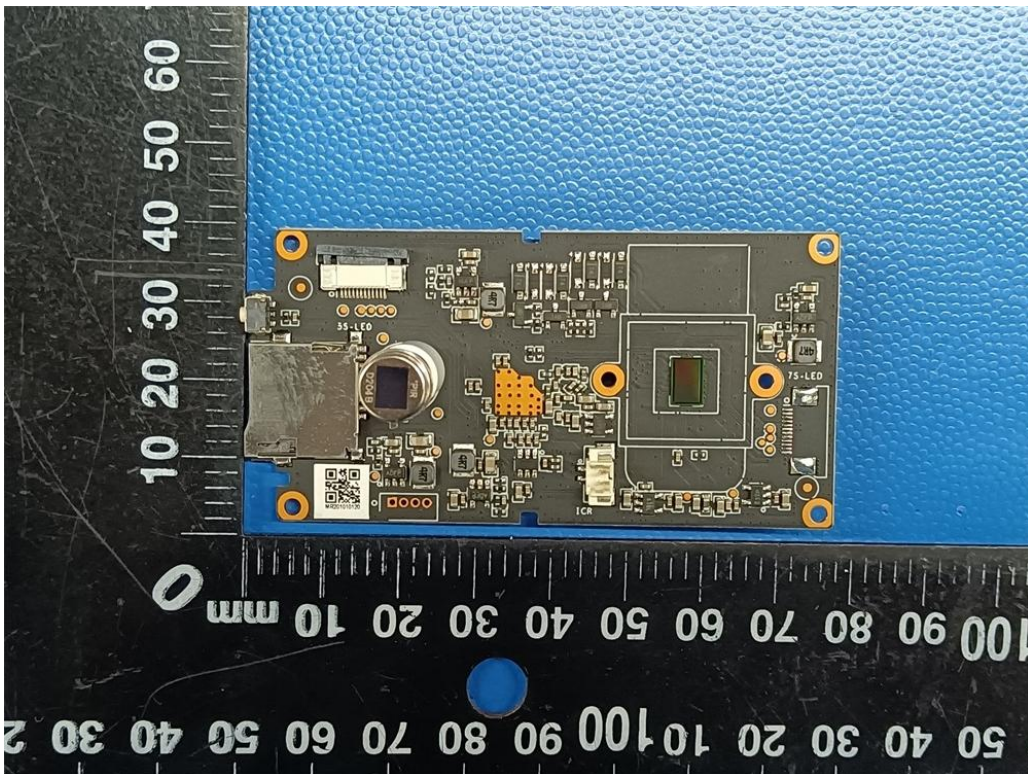


Fig. 16

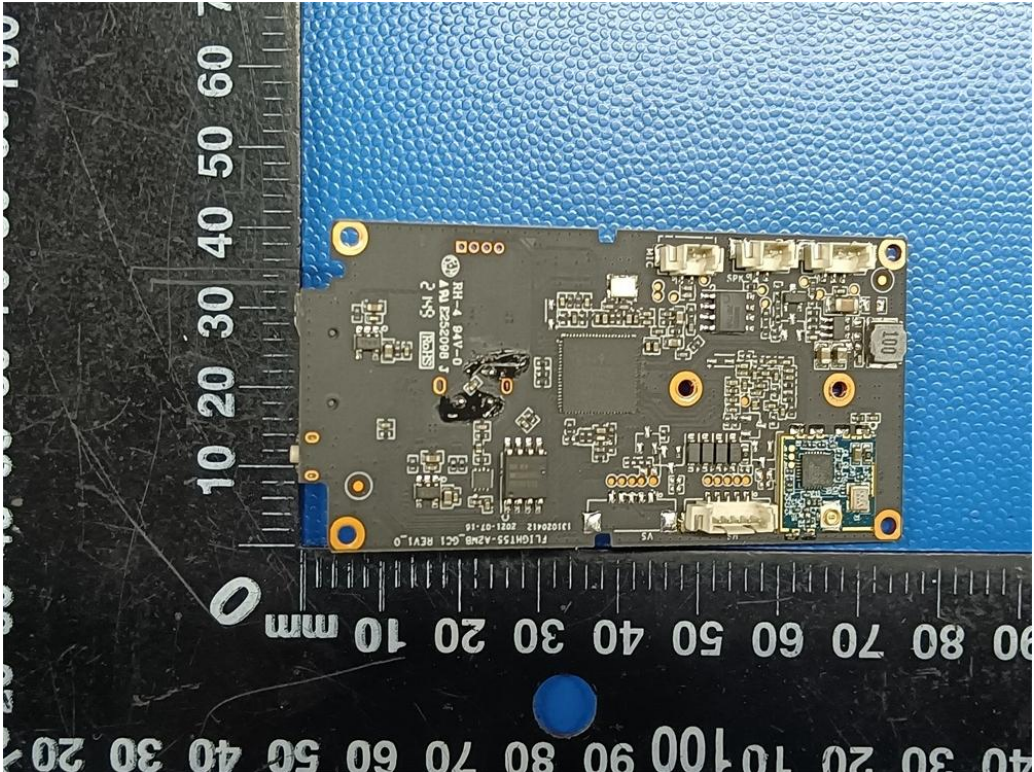


Fig. 17

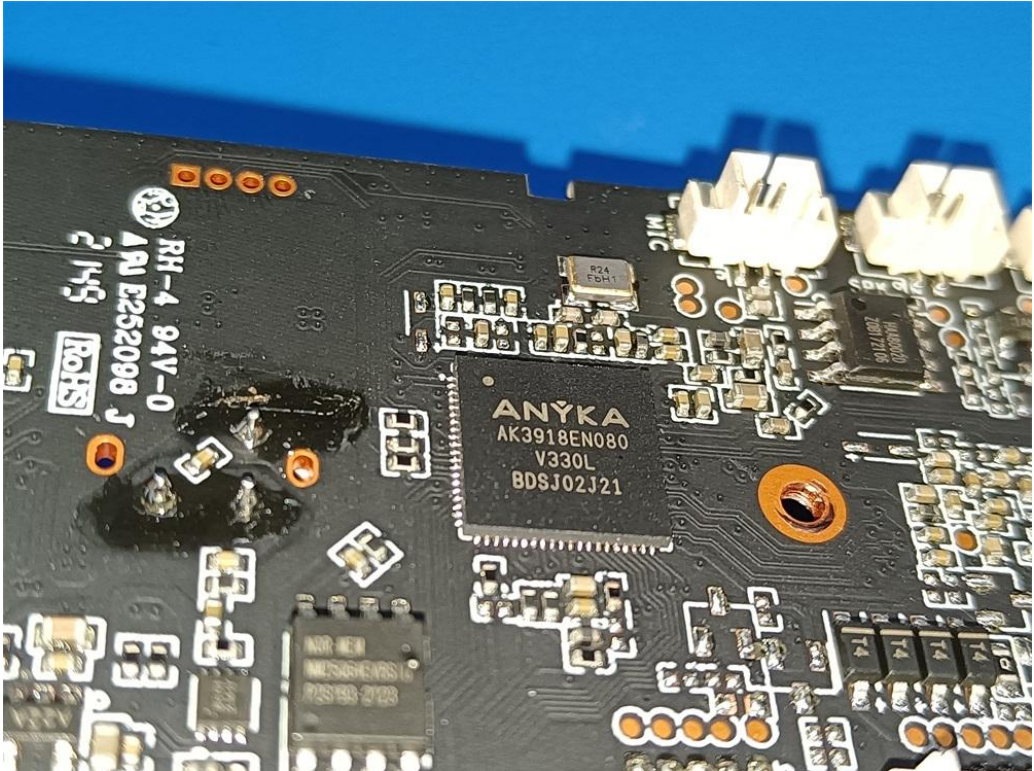


Fig. 18

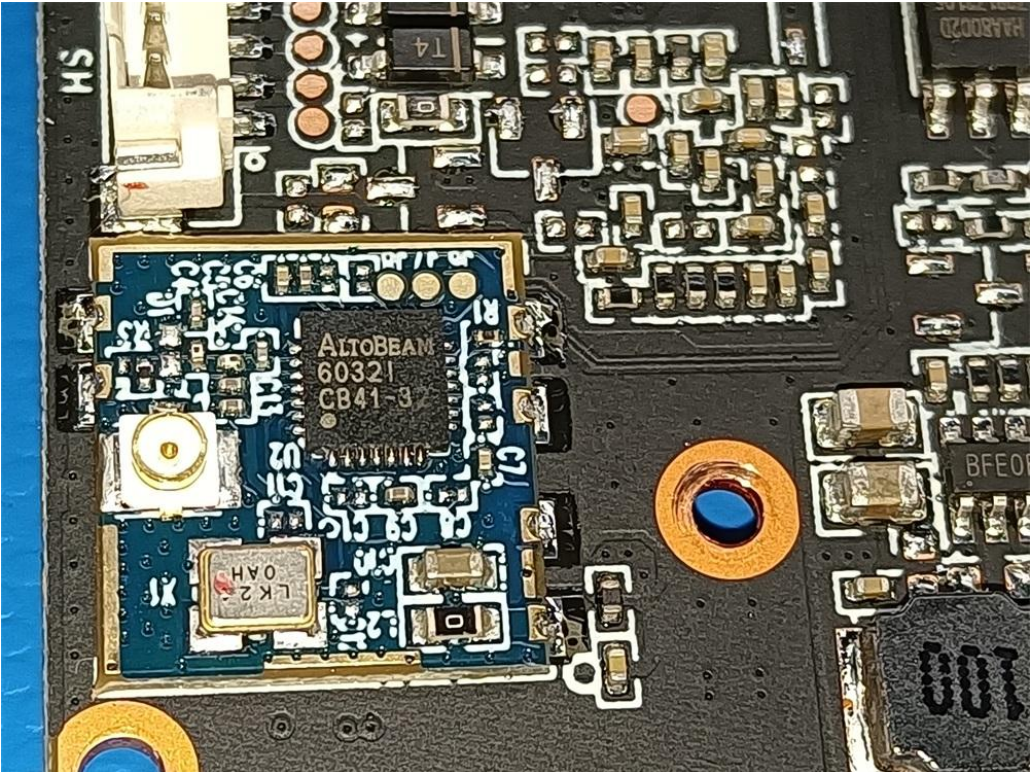


Fig. 19

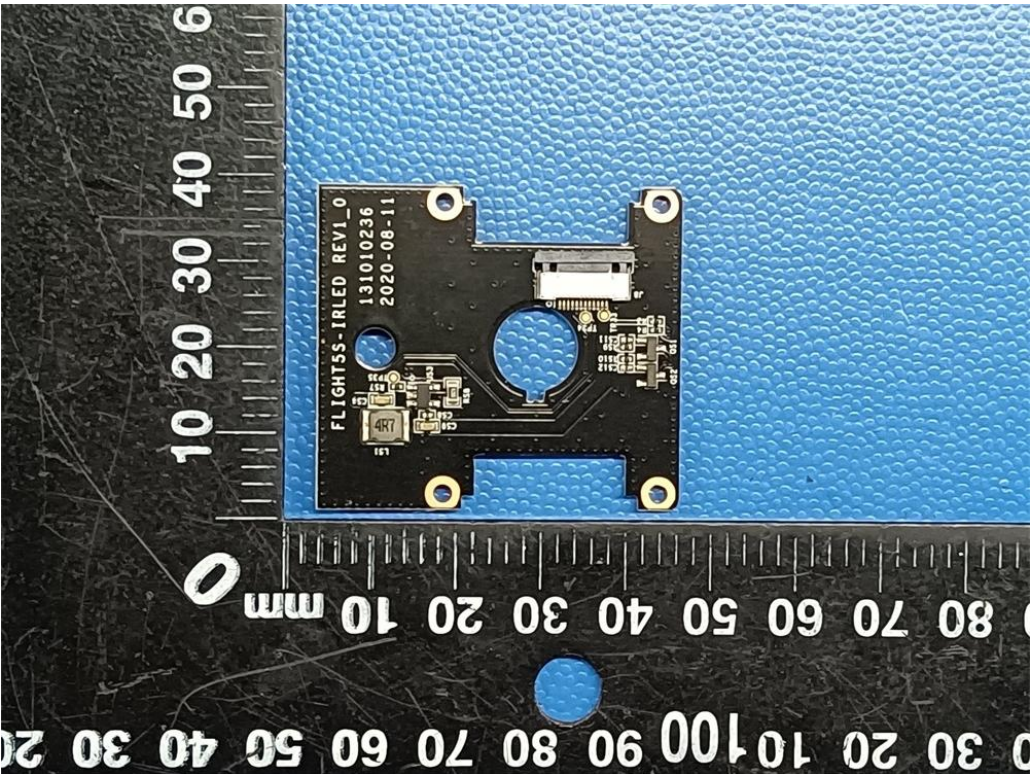


Fig. 20

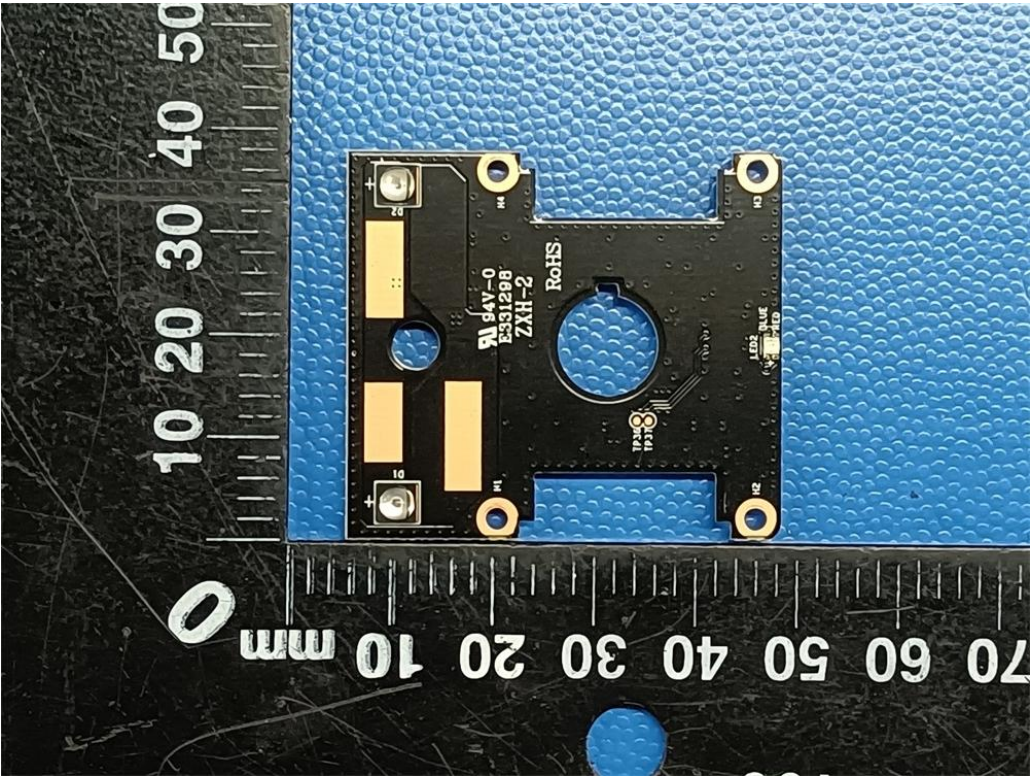


Fig. 21

.....End of Report.....