



Shenzhen CTA Testing Technology Co., Ltd.
 Room 106, Building 1, Yibaolai Industrial Park, Qiaotou Community,
 Fuhai Street, Bao'an District, Shenzhen, China

FCC PART 15 SUBPART C TEST REPORT

FCC PART 15.231

Report Reference No......: **CTA24101700901**

FCC ID: **2AG7C-BELL24TN**

Compiled by

(position+printed name+signature)..: File administrators Jinghua Xiao

Jinghua Xiao

Supervised by

(position+printed name+signature)..: Test Engineer Lushan Kong

Lushan Kong

Approved by

(position+printed name+signature)..: Manager Eric Wang



Wang

Date of issue.....: Oct.17, 2024

Representative Laboratory Name.: **Shenzhen CTA Testing Technology Co., Ltd.**

Address.....: Room 106, Building 1, Yibaolai Industrial Park, Qiaotou Community, Fuhai Street, Bao'an District, Shenzhen, China

Applicant's name.....: **Hangzhou Meari Technology Co., Ltd.**

Address.....: Building 4, Huiding Intelligent Innovation Center, No. 825, Ruquan Road, Changhe Street, Binjiang District, Hangzhou, Zhejiang, China

Test specification.....:

Standard.....: **FCC Part 15.231**

Shenzhen CTA Testing Technology Co., Ltd. All rights reserved.

This publication may be reproduced in whole or in part for non-commercial purposes as long as the Shenzhen CTA Testing Technology Co., Ltd. is acknowledged as copyright owner and source of the material. Shenzhen CTA Testing Technology Co., Ltd. takes no responsibility for and will not assume liability for damages resulting from the reader's interpretation of the reproduced material due to its placement and context.

Test item description.....: **Wireless DoorBell**

Trade Mark.....: N/A

Manufacturer.....: Hangzhou Meari Technology Co., Ltd.

Model/Type reference/HVIN.....: Bell 24T

Listed Models/HVIN: Bell 24S, Bell 24Q, Bell 24F, EOD1-1007-BLK, MZ-V3, Bell 18T, Bell 18S, Bell 18F, BellCam, VBELL1, VBELL1 PRO

Modulation Type.....: OOK

Operation Frequency.....: From 433.92MHz

Hardware Version: BELL24S-T8MB_MIS1 REV2_0

Software Version.....: N/A

Rating.....: DC 5.0V/1.0A by Adapter

Result.....: **PASS**

Shenzhen CTA Testing Technology Co., Ltd.

Room 106, Building 1, Yibaolai Industrial Park, Qiaotou Community, Fuhai Street, Bao'an District, Shenzhen, China
 Tel:+86-755 2322 5875 E-mail:cta@cta-test.cn Web:http://www.cta-test.cn

TEST REPORT

Test Report No. : CTA24101700901	Oct.17, 2024 Date of issue
---	-------------------------------

Equipment under Test : Wireless DoorBell

Model /Type /HVIN : Bell 24T

Listed model/HVIN : Bell 24S, Bell 24Q, Bell 24F, EOD1-1007-BLK, MZ-V3, Bell 18T, Bell 18S, Bell 18F, BellCam, VBELL1, VBELL1 PRO

Applicant : **Hangzhou Meari Technology Co., Ltd.**

Address : Building 4, Huiding Intelligent Innovation Center, No. 825,Ruquan Road, Changhe Street, Binjiang District, Hangzhou, Zhejiang, China

Manufacturer : **Hangzhou Meari Technology Co., Ltd.**

Address : 4F of Building 1 and 2-4F of Building 2, No. 91 Chutian Road, Xixing Street, Binjiang District, Hangzhou, Zhejiang, China

Test Result:	PASS
---------------------	-------------

The test report merely corresponds to the test sample.
It is not permitted to copy extracts of these test result without the written permission of the test laboratory.

Contents

1. TEST STANDARDS	4
2. SUMMARY	5
2.1. General Remarks	5
2.2. Product Description	5
2.3. Equipment Under Test	5
2.4. Short description of the Equipment under Test (EUT)	5
2.5. EUT operation mode	6
2.6. Block Diagram of Test Setup	6
2.7. EUT Exercise Software	6
2.8. Special Accessories	6
2.9. External I/O Cable	6
2.10. Related Submittal(s) / Grant (s)	6
2.11. Modifications	6
3. TEST ENVIRONMENT	7
3.1. Address of the test laboratory	7
3.2. Test Facility	7
3.3. Environmental conditions	7
3.4. Statement of the measurement uncertainty	7
3.5. Test Description	8
3.6. Equipments Used during the Test	9
4. TEST CONDITIONS AND RESULTS	10
4.1. AC Power Conducted Emission	10
4.2. Transmitter Field Strength of Emissions	13
4.3. Transmission Cease Time	22
4.4. 20dB Bandwidth Emissions	23
4.5. Duty cycle	24
4.6. Antenna Requirement	26
5. TEST SETUP PHOTOS OF THE EUT	27
6. EXTERNAL AND INTERNAL PHOTOS OF THE EUT	30

1. TEST STANDARDS

The tests were performed according to following standards:

[FCC Rules Part 15.231](#): Periodic operation in the band 40.66-40.70 MHz and above 70 MHz.

[ANSI C63.10-2020](#): American National Standard for Testing Unlicensed Wireless Devices

2. SUMMARY

2.1. General Remarks

Date of receipt of test sample	:	Sep.05, 2024
Testing commenced on	:	Sep.05, 2024
Testing concluded on	:	Oct.16, 2024

2.2. Product Description

Product Name	Wireless DoorBell
Trade Mark	N/A
Model/Type reference	Bell 24T
List Models	Bell 24S, Bell 24Q, Bell 24F, EOD1-1007-BLK, MZ-V3, Bell 18T, Bell 18S, Bell 18F, BellCam, VBELL1, VBELL1 PRO
Model Declaration	PCB board, structure and internal of these model(s) are the same, Only the model name different , So no additional models were tested.
Power supply:	DC 5.0V by Adapter
Sample ID	CTA241017009-5#&CTA241017009-6#
WIFI(2.4G Band)	
Frequency Range	2412MHz ~ 2462MHz
Channel Spacing	5MHz
Channel Number	11 Channel for 20MHz bandwidth(2412~2462MHz)
Modulation Type	802.11b: DSSS; 802.11g/n: OFDM
Antenna Description	On board, 1.94dBi(Max.)
SRD	
Frequency Range	433.92MHz
Channel Number	1Channel
Modulation Type	OOK
Antenna Description	FPC Antenna, 0.59dBi(Max.)

2.3. Equipment Under Test

Power supply system utilised

Power supply voltage	:	<input type="radio"/> 230V / 50 Hz	<input type="radio"/> 120V / 60Hz
		<input type="radio"/> 12 V DC	<input type="radio"/> 24 V DC
		<input checked="" type="radio"/> Other (specified in blank below)	

DC 5.0V

2.4. Short description of the Equipment under Test (EUT)

This is a Wireless DoorBell.

For more details, refer to the user's manual of the EUT.

2.5. EUT operation mode

Mode of Operations	Frequency Range (MHz)	Data Rate (Mbps)
SRD	433.92	1
For Conducted Emission		
Test Mode		TX Mode
For Radiated Emission		
Test Mode		TX Mode

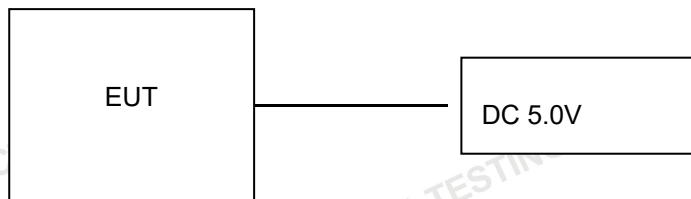
Channel	Frequency(MHz)
1	433.92

The EUT has been tested under operating condition.

This test was performed with EUT in X, Y, Z position and the worst case was found when EUT in X position.

Worst-case mode and channel used for 9 KHz-1000 MHz radiated emissions was the mode and channel with the highest output power, that was determined to be SRD mode.

2.6. Block Diagram of Test Setup



2.7. EUT Exercise Software

After the product is powered on, the signal is transmitted through the operation button.

2.8. Special Accessories

Manufacturer	Description	Model	Serial Number	Certificate
SHENZHEN TIANYIN ELECTRONICS CO.,LTD.	Adapter	TPA-46B050100UU	--	SDOC
Zhuzhou Dachuan Electronic Technology Co.,Ltd.	Adapter	DCT07W050100US-C1	--	SDOC

2.9. External I/O Cable

I/O Port Description	Quantity	Cable
DC IN Port	1	1.0M, Unscreened Cable
SD Card Port	1	N/A

2.10. Related Submittal(s) / Grant (s)

This submittal(s) (test report) is intended for **FCC ID: 2AG7C-BELL24TN** filing to comply with Section 15.247 of the FCC Part 15, Subpart C Rules.

2.11. Modifications

No modifications were implemented to meet testing criteria.

3. TEST ENVIRONMENT

3.1. Address of the test laboratory

Shenzhen CTA Testing Technology Co., Ltd.

Room 106, Building 1, Yibaolai Industrial Park, Qiaotou Community, Fuhai Street, Bao' an District, Shenzhen, China.

3.2. Test Facility

The test facility is recognized, certified, or accredited by the following organizations:

FCC-Registration No.: 517856 Designation Number: CN1318

Shenzhen CTA Testing Technology Co., Ltd. has been listed on the US Federal Communications Commission list of test facilities recognized to perform electromagnetic emissions measurements.

A2LA-Lab Cert. No.: 6534.01

Shenzhen CTA Testing Technology Co., Ltd. has been listed by American Association for Laboratory Accreditation to perform electromagnetic emission measurement.

The 3m-Semi anechoic test site fulfils CISPR 16-1-4 according to ANSI C63.10 and CISPR 16-1-4:2010.

3.3. Environmental conditions

During the measurement the environmental conditions were within the listed ranges:

Temperature:	15-35 ° C
Humidity:	30-60 %
Atmospheric pressure:	950-1050mbar

3.4. Statement of the measurement uncertainty

The data and results referenced in this document are true and accurate. The reader is cautioned that there may be errors within the calibration limits of the equipment and facilities. The measurement uncertainty was calculated for all measurements listed in this test report acc. to CISPR 16 - 4 „Specification for radio disturbance and immunity measuring apparatus and methods – Part 4: Uncertainty in EMC Measurements“ and is documented in the Shenzhen CTA Testing Technology Co., Ltd. quality system acc. to DIN EN ISO/IEC 17025. Furthermore, component and process variability of devices similar to that tested may result in additional deviation. The manufacturer has the sole responsibility of continued compliance of the device.

Hereafter the best measurement capability for Shenzhen CTA laboratory is reported:

Test	Range	Measurement Uncertainty	Notes
Radiated Emission	9KHz~30MHz	3.02 dB	(1)
Radiated Emission	30~1000MHz	4.06 dB	(1)
Radiated Emission	1~18GHz	5.14 dB	(1)
Radiated Emission	18-40GHz	5.38 dB	(1)
Conducted Disturbance	0.15~30MHz	2.14 dB	(1)
Output Peak power	30MHz~18GHz	0.55 dB	(1)
Power spectral density	/	0.57 dB	(1)
Spectrum bandwidth	/	1.1%	(1)
Radiated spurious emission (30MHz-1GHz)	30~1000MHz	4.10 dB	(1)
Radiated spurious emission (1GHz-18GHz)	1~18GHz	4.32 dB	(1)
Radiated spurious emission (18GHz-40GHz)	18-40GHz	5.54 dB	(1)

This uncertainty represents an expanded uncertainty expressed at approximately the 95% confidence level using a coverage factor of k=2.

3.5. Test Description

Applied Standard: FCC Part 15 Subpart C				
ISED Rules	Description of Test	Test Sample	Result	Remark
§15.203	Antenna Requirement	CTA241017009-5#	/	/
§15.205	Restricted Bands Of Operation	CTA241017009-5#	Compliant	Note 1
§15.209	Radiated Emission Limits, General Requirements.	CTA241017009-5# CTA241017009-6#	Compliant	Note 1
§15.231 (b)	Field Strength Of Fundamental and Harmonics	CTA241017009-5# CTA241017009-6#	Compliant	Note 1
§15.231 (c)	20dB Bandwidth	CTA241017009-5#	Compliant	Note 1
§15.231 (a)(1)	Transmission Cease Time	CTA241017009-5#	Compliant	Note 1
§15.231	Duty cycle Factor	CTA241017009-5#	Compliant	Note 1
§15.207	AC Conducted Emissions	CTA241017009-6#	Compliant	Note 1

Remark:

1. The measurement uncertainty is not included in the test result.
2. NA = Not Applicable; NP = Not Performed
3. Note 1 – Test results inside test report;
4. Note 2 – Test results in other test report (MPE Report).
5. We tested all test mode and recorded worst case in report

3.6. Equipments Used during the Test

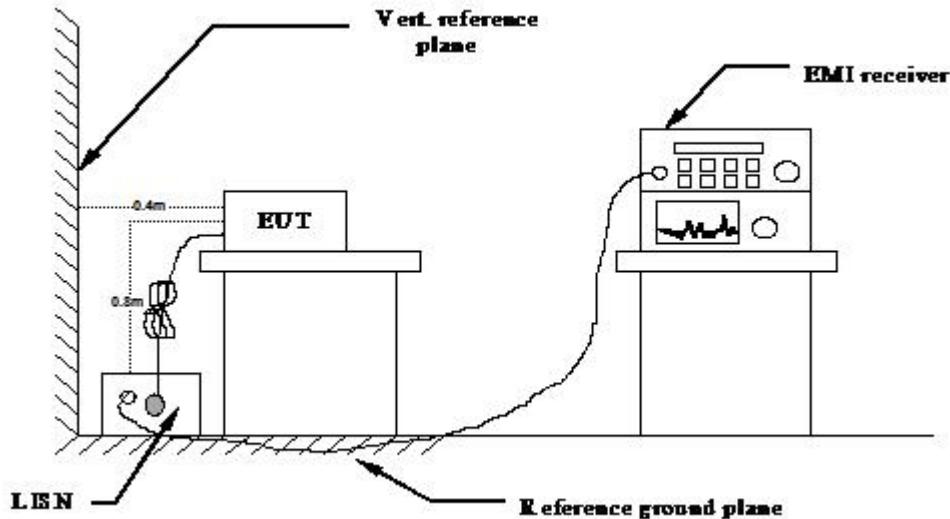
LISN	R&S	ENV216	CTA-308	2024/08/01	2025/07/31
LISN	R&S	ENV216	CTA-314	2024/08/01	2025/07/31
EMI Test Receiver	R&S	ESPI	CTA-307	2024/08/01	2025/07/31
EMI Test Receiver	R&S	ESCI	CTA-306	2024/08/01	2025/07/31
Spectrum Analyzer	Agilent	N9020A	CTA-301	2024/08/01	2025/07/31
Spectrum Analyzer	R&S	FSP	CTA-337	2024/08/01	2025/07/31
Vector Signal generator	Agilent	N5182A	CTA-305	2024/08/01	2025/07/31
Analog Signal Generator	R&S	SML03	CTA-304	2024/08/01	2025/07/31
WIDEBAND RADIO COMMUNICATION TESTER	CMW500	R&S	CTA-302	2024/08/01	2025/07/31
Temperature and humidity meter	Chigo	ZG-7020	CTA-326	2024/08/01	2025/07/31
Ultra-Broadband Antenna	Schwarzbeck	VULB9163	CTA-310	2023/10/17	2024/10/16
Horn Antenna	Schwarzbeck	BBHA 9120D	CTA-309	2023/10/17	2024/10/16
Loop Antenna	Zhinan	ZN30900C	CTA-311	2023/10/17	2024/10/16
Horn Antenna	Beijing Hangwei Dayang	OBH100400	CTA-336	2024/08/06	2025/08/05
Amplifier	Schwarzbeck	BBV 9745	CTA-312	2024/08/01	2025/07/31
Amplifier	Taiwan chengyi	EMC051845B	CTA-313	2024/08/01	2025/07/31
Directional coupler	NARDA	4226-10	CTA-303	2024/08/01	2025/07/31
High-Pass Filter	XingBo	XBLBQ-GTA18	CTA-402	2024/08/01	2025/07/31
High-Pass Filter	XingBo	XBLBQ-GTA27	CTA-403	2024/08/01	2025/07/31
Automated filter bank	Tonscend	JS0806-F	CTA-404	2024/08/01	2025/07/31
Power Sensor	Agilent	U2021XA	CTA-405	2024/08/01	2025/07/31
Amplifier	Schwarzbeck	BBV9719	CTA-406	2024/08/01	2025/07/31
EMI Test Software	Tonscend	JS32-CE	5.0.0.2	/	/
EMI Test Software	Tonscend	JS32-RE	5.0.0.1	/	/
RF Test Software	Tonscend	JS1120-1	3.1.65	/	/
RF Test Software	Tonscend	JS1120-3	3.1.46	/	/

Note: 1. The Cal.Interval was one year.

4. TEST CONDITIONS AND RESULTS

4.1. AC Power Conducted Emission

TEST CONFIGURATION



TEST PROCEDURE

- 1 The equipment was set up as per the test configuration to simulate typical actual usage per the user's manual. The EUT is a tabletop system, a wooden table with a height of 0.8 meters is used and is placed on the ground plane as per ANSI C63.10-2020.
- 2 Support equipment, if needed, was placed as per ANSI C63.10-2020
- 3 All I/O cables were positioned to simulate typical actual usage as per ANSI C63.10-2020
- 4 The EUT received DC 5V power, the adapter received AC120V/60Hz or AC 240V/60Hz power through a Line Impedance Stabilization Network (LISN) which supplied power source and was grounded to the ground plane.
- 5 The EUT test program was started. Emissions were measured on each current carrying line of the EUT using a spectrum Analyzer / Receiver connected to the LISN powering the EUT. The LISN has two monitoring points: Line 1 (Hot Side) and Line 2 (Neutral Side). Two scans were taken: one with Line 1 connected to Analyzer / Receiver and Line 2 connected to a 50 ohm load; the second scan had Line 1 connected to a 50 ohm load and Line 2 connected to the Analyzer / Receiver.
- 6 Analyzer / Receiver scanned from 150 KHz to 30MHz for emissions in each of the test modes.
- 7 During the above scans, the emissions were maximized by cable manipulation.

AC Power Conducted Emission Limit

For intentional device, according to § 15.207(a) and RSS-GEN§8.8AC Power Conducted Emission Limits is as following:

Frequency range (MHz)	Limit (dBuV)	
	Quasi-peak	Average
0.15-0.5	66 to 56*	56 to 46*
0.5-5	56	46
5-30	60	50

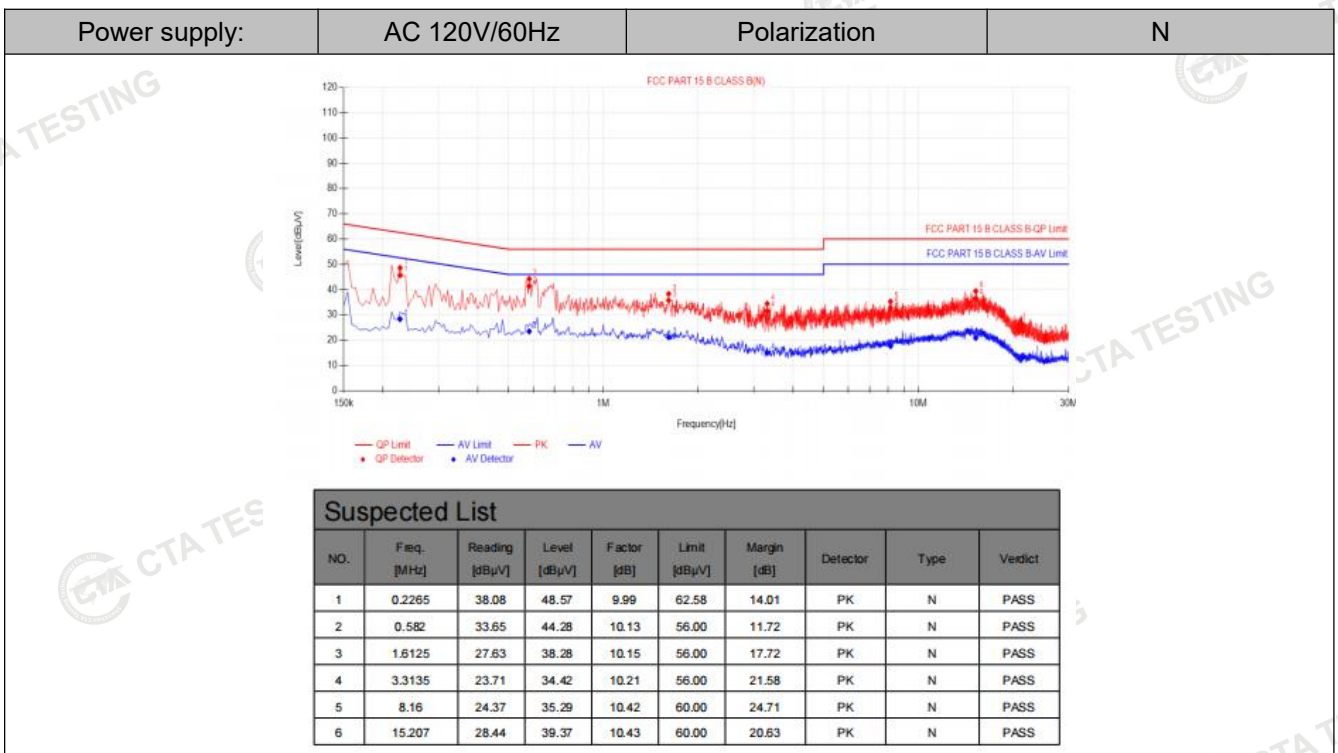
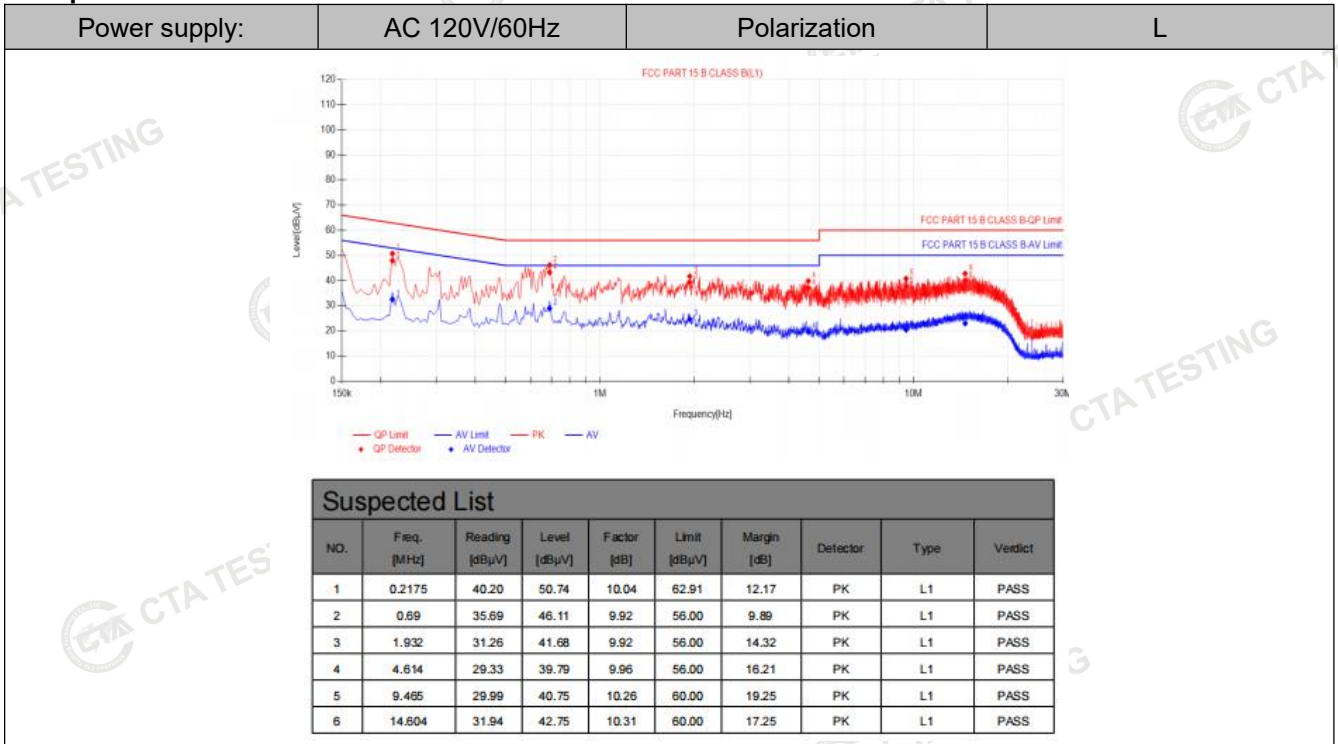
* Decreases with the logarithm of the frequency.

TEST RESULTS

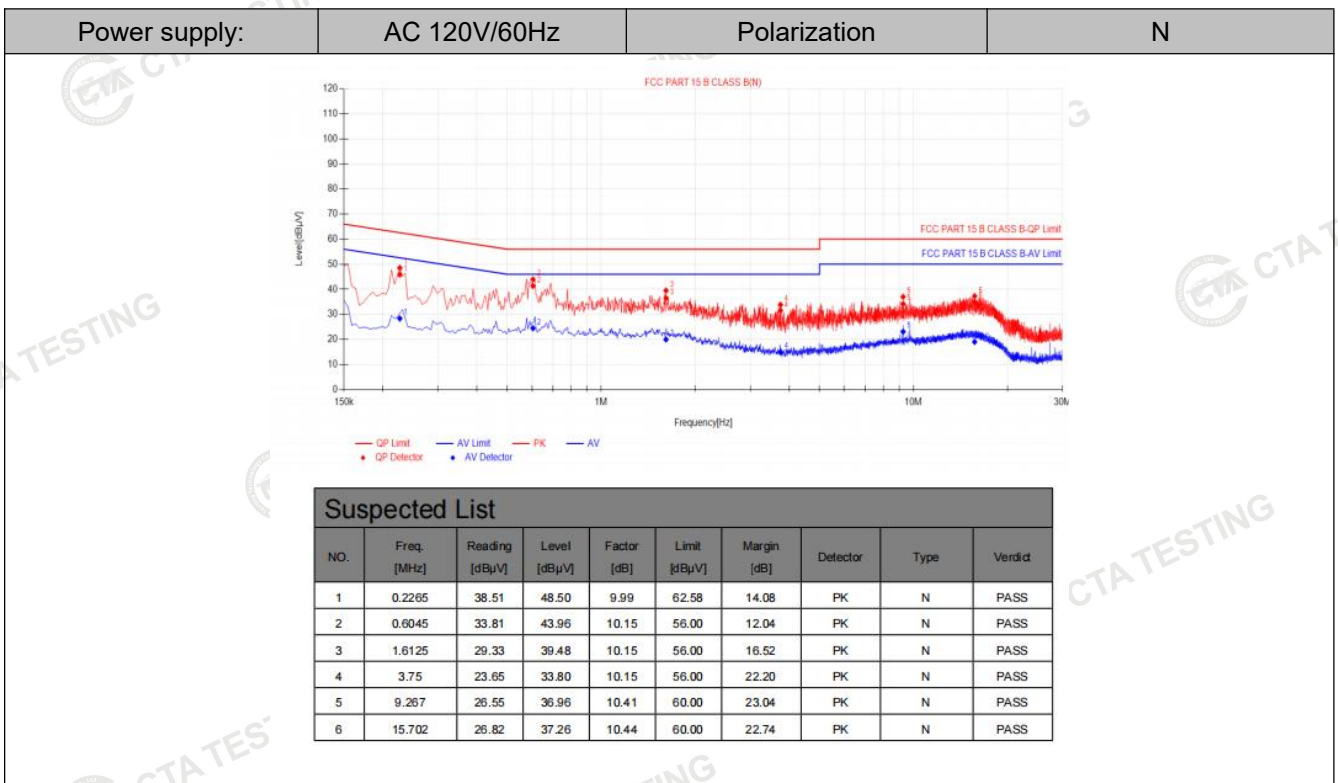
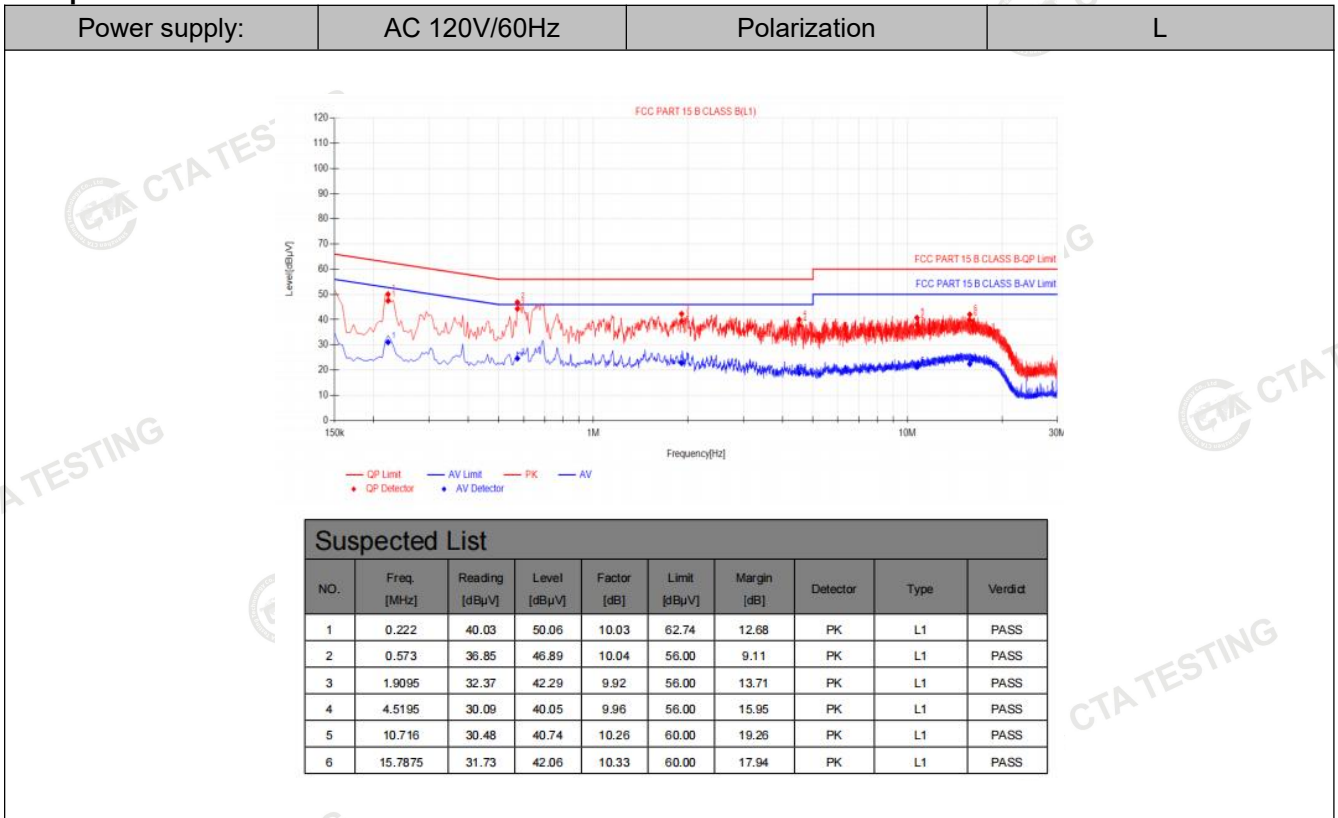
Remark: We measured Conducted Emission at OOK mode from 150 KHz to 30MHz in AC120V and the worst case was recorded.

Temperature	24.2°C	Humidity	54.2%
Test Engineer	Lushan Kong	Configurations	SRD

Adapter: TPA-46B050100UU



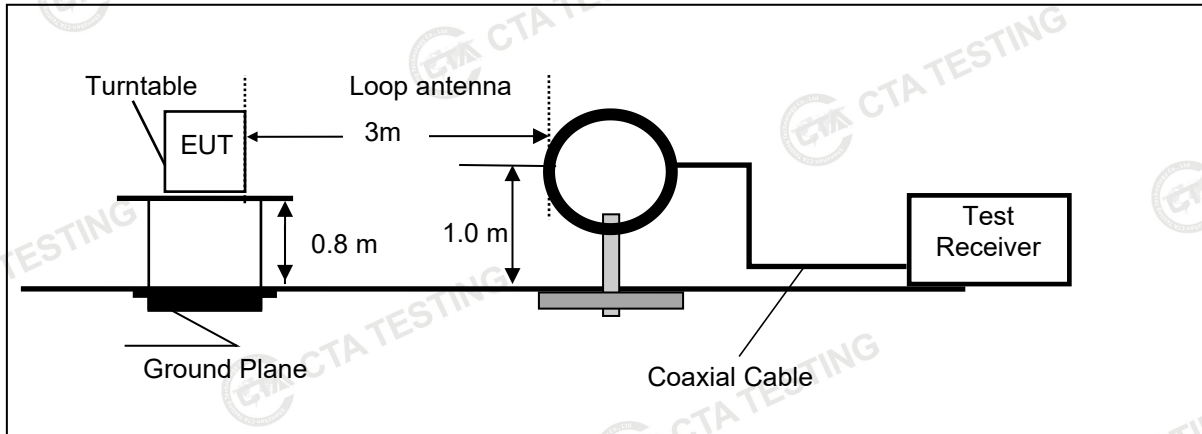
Adapter: DCT07W050100US-C1



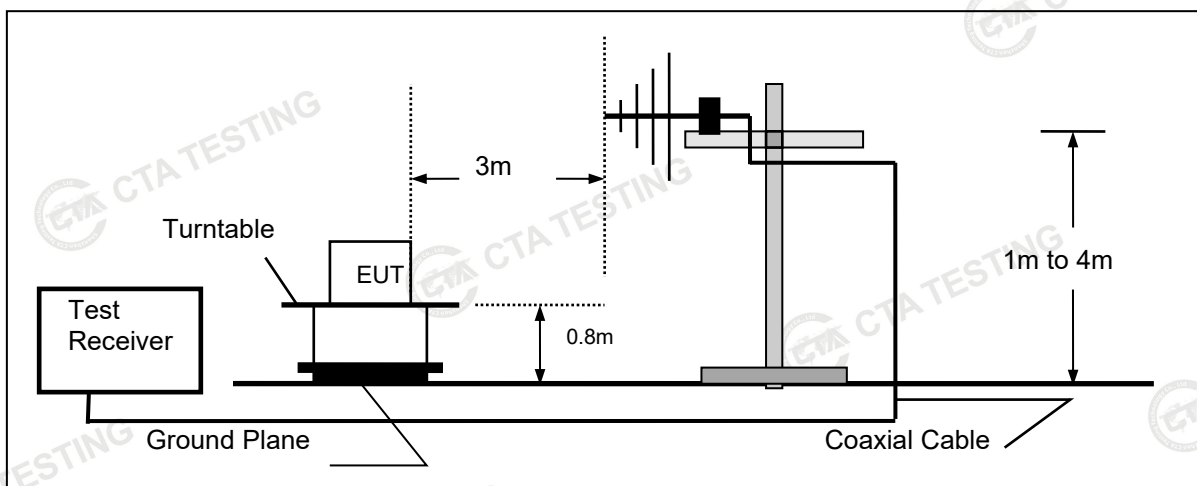
4.2. Transmitter Field Strength of Emissions

TEST CONFIGURATION

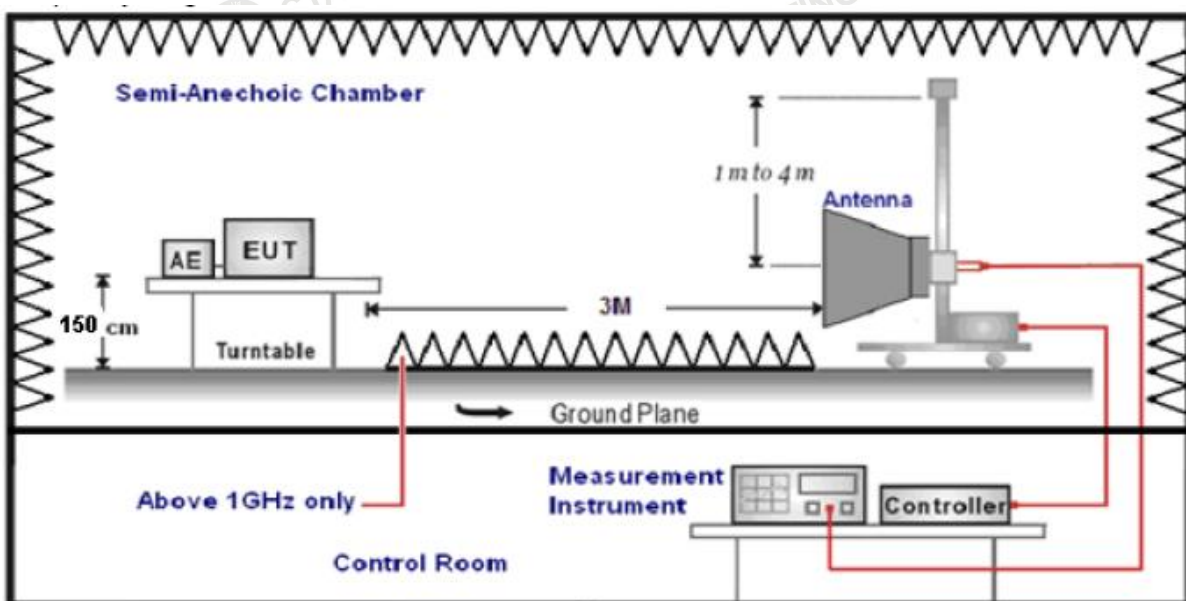
Frequency range 9 KHz – 30MHz



Frequency range 30MHz – 1000MHz



Frequency range above 1GHz-25GHz



TEST PROCEDURE

- The EUT was placed on a turn table which is 0.8m above ground plane when testing frequency range 9 KHz –1GHz;the EUT was placed on a turn table which is 1.5m above ground plane when testing frequency range 1GHz – 25GHz.
- Maximum procedure was performed by raising the receiving antenna from 1m to 4m and rotating the turn table from 0° to 360° to acquire the highest emissions from EUT.
- And also, each emission was to be maximized by changing the polarization of receiving antenna both horizontal and vertical.
- Repeat above procedures until all frequency measurements have been completed.
- Radiated emission test frequency band from 30MHz to 25GHz.
- The distance between test antenna and EUT as following table states:

Test Frequency range	Test Antenna Type	Test Distance
9KHz-30MHz	Active Loop Antenna	3
30MHz-1GHz	Ultra-Broadband Antenna	3
1GHz-18GHz	Double Ridged Horn Antenna	3
18GHz-25GHz	Horn Antenna	1

- Setting test receiver/spectrum as following table states:

Test Frequency range	Test Receiver/Spectrum Setting	Detector
9KHz-150KHz	RBW=200Hz/VBW=3KHz, Sweep time=Auto	QP
150KHz-30MHz	RBW=9KHz/VBW=100KHz, Sweep time=Auto	QP
30MHz-1GHz	RBW=120KHz/VBW=1000KHz, Sweep time=Auto	QP
1GHz-40GHz	Peak Value: RBW=1MHz/VBW=3MHz, Sweep time=Auto Average Value: RBW=1MHz/VBW=10Hz, Sweep time=Auto	Peak

Field Strength Calculation

The field strength is calculated by adding the Antenna Factor and Cable Factor and subtracting the Amplifier Gain and Duty Cycle Correction Factor(if any) from the measured reading. The basic equation with a sample calculation is as follows:

$$FS = RA + AF + CL - AG$$

Where FS = Field Strength	CL = Cable Attenuation Factor (Cable Loss)
RA = Reading Amplitude	AG = Amplifier Gain
AF = Antenna Factor	

$$\text{Transd} = AF + CL - AG$$

RADIATION LIMIT

The pre-test have done for the EUT in three axes and found the worst emission at position shown in test setup photos.

Frequency (MHz)	Distance (Meters)	Radiated (dB μ V/m)	Radiated (μ V/m)
0.009-0.49	3	20log(2400/F(KHz))+40log(300/3)	2400/F(KHz)
0.49-1.705	3	20log(24000/F(KHz))+ 40log(30/3)	24000/F(KHz)
1.705-30	3	20log(30)+ 40log(30/3)	30
30-88	3	40.0	100
88-216	3	43.5	150
216-960	3	46.0	200
Above 960	3	54.0	500

According to §RSS-210§A.1.2(b): Unwanted emissions shall be 10 times below the fundamental emissions field strength limits in table A1 or comply with the limits specified in RSS-Gen, whichever is less stringent:

Frequencies(MHz)	Field Strength (microvolts/meter)	Field Strength of spurious emissions(microvolts/meter)
40.66-40.70	2,250	225
70-130	1,250	125
130-174	¹ 1,250 to 3,750	¹ 125 to 375
174-260	3,750	375
260-470	¹ 3,750 to 12,500	¹ 375 to 1,250
Above 470	12,500	1,250

¹Linear interpolations.

[Where F is the frequency in MHz, the formulas for calculating the maximum permitted fundamental field strengths are as follows: for the band 130-174 MHz, $\mu\text{V}/\text{m}$ at 3 meters = $56.81818(F) - 6136.3636$; for the band 260-470 MHz, $\mu\text{V}/\text{m}$ at 3 meters = $41.6667(F) - 7083.3333$. The maximum permitted unwanted emission level is 20 dB below the maximum permitted fundamental level.]

(1) The above field strength limits are specified at a distance of 3 meters. The tighter limits apply at the band edges.

(2) Intentional radiators operating under the provisions of this section shall demonstrate compliance with the limits on the field strength of emissions, as shown in the above table, based on the average value of the measured emissions. As an alternative, compliance with the limits in the above table may be based on the use of measurement instrumentation with a CISPR quasi-peak detector. The specific method of measurement employed shall be specified in the application for equipment authorization. If average emission measurements are employed, the provisions in §15.35 for averaging pulsed emissions and for limiting peak emissions apply. Further, compliance with the provisions of §15.205 shall be demonstrated using the measurement instrumentation specified in that section.

(3) The limits on the field strength of the spurious emissions in the above table are based on the fundamental frequency of the intentional radiator. Spurious emissions shall be attenuated to the average (or, alternatively, CISPR quasi-peak) limits shown in this table or to the general limits shown in §15.209, whichever limit permits a higher field strength.

15.205 (a) Except as shown in paragraph (d) of this section, only spurious emissions are permitted in any of the frequency bands listed below:

MHz	MHz	MHz	GHz
0.090-0.110	16.42-16.423	399.9-410	4.5-5.15
\1\ 0.495-0.505	16.69475-16.69525	608-614	5.35-5.46
2.1735-2.1905	16.80425-16.80475	960-1240	7.25-7.75
4.125-4.128	25.5-25.67	1300-1427	8.025-8.5
4.17725-4.17775	37.5-38.25	1435-1626.5	9.0-9.2
4.20725-4.20775	73-74.6	1645.5-1646.5	9.3-9.5
6.215-6.218	74.8-75.2	1660-1710	10.6-12.7
6.26775-6.26825	108-121.94	1718.8-1722.2	13.25-13.4
6.31175-6.31225	123-138	2200-2300	14.47-14.5
8.291-8.294	149.9-150.05	2310-2390	15.35-16.2
8.362-8.366	156.52475-156.52525	2483.5-2500	17.7-21.4
8.37625-8.38675	156.7-156.9	2690-2900	22.01-23.12
8.41425-8.41475	162.0125-167.17	3260-3267	23.6-24.0
12.29-12.293	167.72-173.2	3332-3339	31.2-31.8
12.51975-12.52025	240-285	3345.8-3358	36.43-36.5
12.57675-12.57725	322-335.4	3600-4400	(\2\)
13.36-13.41			

\1\ Until February 1, 1999, this restricted band shall be 0.490-0.510 MHz.

\2\ Above 38.6

Shenzhen CTA Testing Technology Co., Ltd.

Room 106, Building 1, Yibaolai Industrial Park, Qiaotou Community, Fuhai Street, Bao'an District, Shenzhen, China
Tel:+86-755 2322 5875 E-mail:cta@cta-test.cn Web:http://www.cta-test.cn

TEST RESULTS

Remark: We measured Radiated Emission at OOK mode from 30 MHz to 25GHz in AC120V and the worst case was recorded.

Temperature	25°C	Humidity	60%
Test Engineer	Lushan Kong	Configurations	SRD

For 9 KHz~30MHz

Freq. (MHz)	Level (dBuV)	Over Limit (dB)	Over Limit (dBuV)	Remark
-	-	-	-	See Note

Note:

The low frequency, which started from 9 KHz to 30 MHz, was pre-scan and the result was 20dB lower than the limit line per 15.31(o) was not reported.

Distance extrapolation factor = $40 \log(\text{specific distance} / \text{test distance})$ (dB);

Limit line = specific limits (dBuV) + distance extrapolation factor.

For 30MHz to 1000MHz

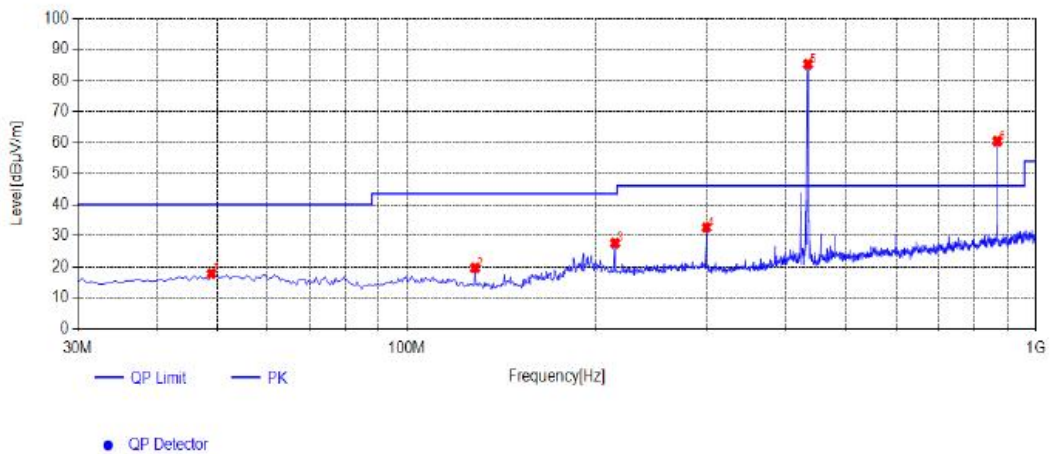
Adapter: TPA-46B050100UU

Fundamental and Harmonics Average Result						
Frequency (MHz)	Peak Level (dB μ V/m)	PK Factor(dB μ V/m) (see Section 4.5)	Average Level (dB μ V/m)	Limit(dB μ V/m) (average)	Margin(dB)	Conclusion
434.01	85.24	-9.37	75.87	80.80	4.93	PASS
868.08	60.39	-9.37	51.02	60.80	9.78	PASS

Frequency (MHz)	Pol.	Measure Result(AV, dBuV/m)	ERP(dBm)	Limit (dBuV/m)	Result
434.01	H	75.87	-19.33	80.80	Pass
868.08	H	51.02	-44.18	60.80	Pass

Horizontal

Test Graph



Suspected List

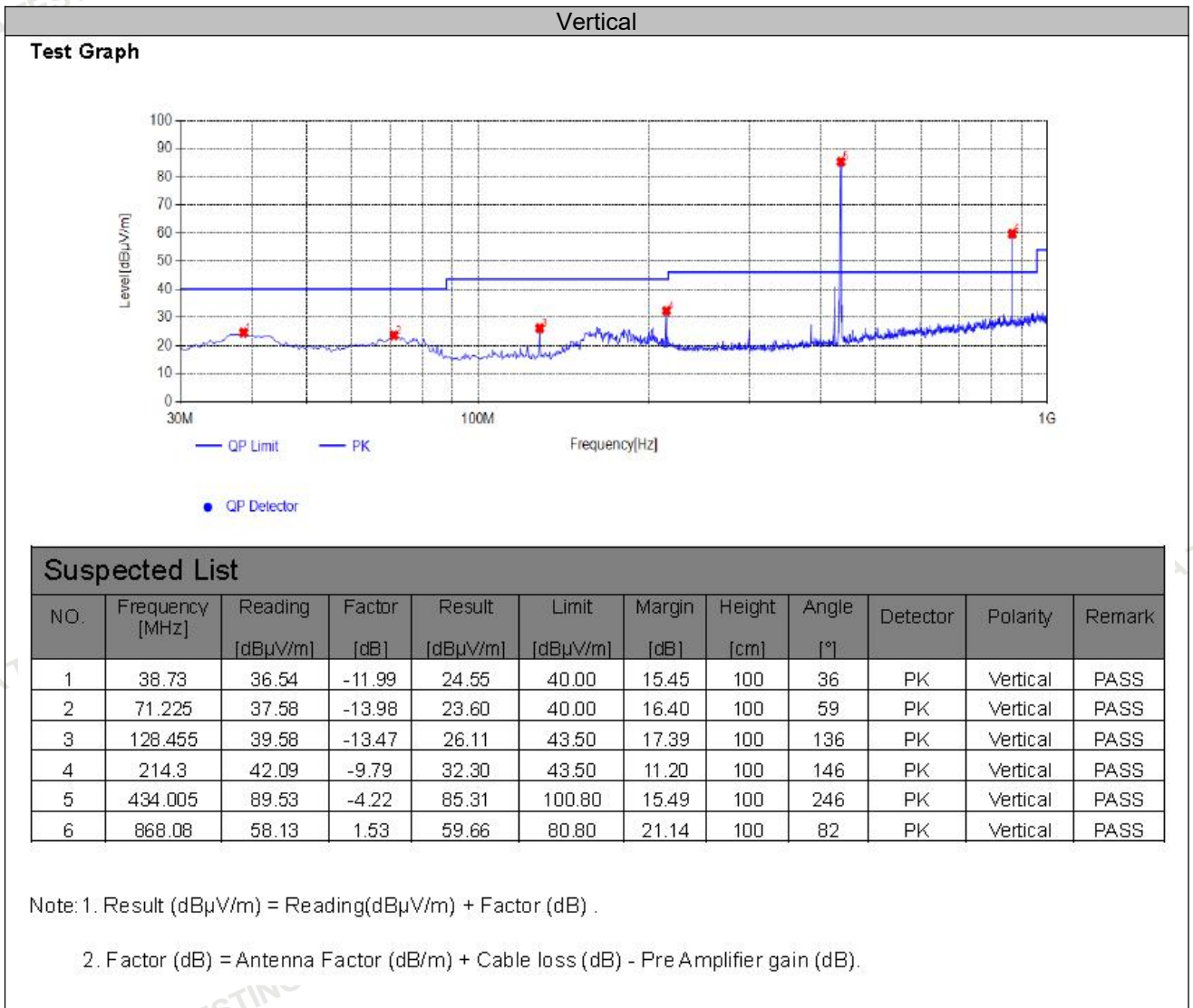
NO.	Frequency [MHz]	Reading [dB μ V/m]	Factor [dB]	Result [dB μ V/m]	Limit [dB μ V/m]	Margin [dB]	Height [cm]	Angle [°]	Detector	Polarity	Remark
1	48.915	28.78	-10.97	17.81	40.00	22.19	100	7	PK	Horizontal	PASS
2	128.455	33.12	-13.47	19.65	43.50	23.85	100	14	PK	Horizontal	PASS
3	214.3	37.38	-9.79	27.59	43.50	15.91	100	89	PK	Horizontal	PASS
4	299.66	40.10	-7.47	32.63	46.00	13.37	100	116	PK	Horizontal	PASS
5	434.005	89.46	-4.22	85.24	100.80	15.56	100	238	PK	Horizontal	PASS
6	868.08	58.86	1.53	60.39	80.80	20.41	100	63	PK	Horizontal	PASS

Note: 1. Result (dB μ V/m) = Reading(dB μ V/m) + Factor (dB) .

2. Factor (dB) = Antenna Factor (dB/m) + Cable loss (dB) - Pre Amplifier gain (dB).

Fundamental and Harmonics Average Result						
Frequency (MHz)	Peak Level (dB μ V/m)	AV Factor(dB μ V/m) (see Section 4.5)	Average Level (dB μ V/m)	Limit(dB μ V/m) (average)	Margin(dB)	Conclusion
434.01	85.31	-9.37	75.94	80.80	4.86	PASS
868.08	59.66	-9.37	50.29	60.80	10.51	PASS

Frequency (MHz)	Pol.	Measure Result(AV, dBuV/m)	ERP(dBm)	Limit (dBuV/m)	Result
434.01	V	75.94	-19.26	80.80	Pass
868.08	V	50.29	-44.91	60.80	Pass



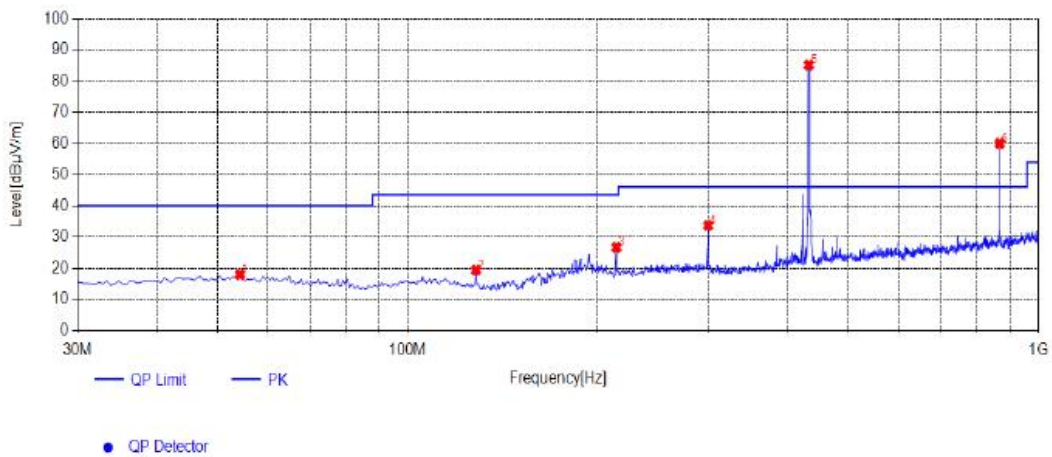
Adapter: DCT07W050100US-C1

Fundamental and Harmonics Average Result						
Frequency (MHz)	Peak Level (dB μ V/m)	AV Factor(dB μ V/m) (see Section 4.5)	Average Level (dB μ V/m)	Limit(dB μ V/m) (average)	Margin(dB)	Conclusion
434.01	85.15	-9.37	75.78	80.80	5.02	PASS
868.08	59.96	-9.37	50.59	60.80	10.21	PASS

Frequency (MHz)	Pol.	Measure Result(AV, dBuV/m)	ERP(dBm)	Limit (dBuV/m)	Result
434.01	H	75.78	-19.42	80.80	Pass
868.08	H	50.59	-44.61	60.80	Pass

Horizontal

Test Graph



Suspected List

NO.	Frequency [MHz]	Reading [dB μ V/m]	Factor [dB]	Result [dB μ V/m]	Limit [dB μ V/m]	Margin [dB]	Height [cm]	Angle [°]	Detector	Polarity	Remark
1	54.25	29.07	-11.12	17.95	40.00	22.05	100	208	PK	Horizontal	PASS
2	128.455	32.84	-13.47	19.37	43.50	24.13	100	341	PK	Horizontal	PASS
3	214.3	36.47	-9.79	26.68	43.50	16.82	100	109	PK	Horizontal	PASS
4	299.66	41.14	-7.47	33.67	46.00	12.33	100	125	PK	Horizontal	PASS
5	432.55	89.41	-4.26	85.15	100.80	15.65	100	178	PK	Horizontal	PASS
6	868.08	58.43	1.53	59.96	80.80	20.84	100	2	PK	Horizontal	PASS

Note: 1. Result (dB μ V/m) = Reading(dB μ V/m) + Factor (dB) .

2. Factor (dB) = Antenna Factor (dB/m) + Cable loss (dB) - Pre Amplifier gain (dB).

Fundamental and Harmonics Average Result						
Frequency (MHz)	Peak Level (dB μ V/m)	AV Factor(dB μ V/m) (see Section 4.5)	Average Level (dB μ V/m)	Limit(dB μ V/m) (average)	Margin(dB)	Conclusion
434.01	85.68	-9.37	76.31	80.80	4.49	PASS
868.08	59.89	-9.37	50.52	60.80	10.28	PASS

Frequency (MHz)	Pol.	Measure Result(AV, dBuV/m)	ERP(dBm)	Limit (dBuV/m)	Result
434.01	V	76.31	-18.89	80.80	Pass
868.08	V	50.52	-44.68	60.80	Pass

Vertical

Test Graph

Suspected List

NO.	Frequency [MHz]	Reading [dBuV/m]	Factor [dB]	Result [dBuV/m]	Limit [dBuV/m]	Margin [dB]	Height [cm]	Angle [°]	Detector	Polarity	Remark
1	72.195	37.70	-13.98	23.72	40.00	16.28	100	21	PK	Vertical	PASS
2	128.455	38.69	-13.47	25.22	43.50	18.28	100	308	PK	Vertical	PASS
3	214.3	41.74	-9.79	31.95	43.50	11.55	100	120	PK	Vertical	PASS
4	299.66	34.09	-7.47	26.62	46.00	19.38	100	87	PK	Vertical	PASS
5	434.49	89.88	-4.20	85.68	100.80	15.12	100	4	PK	Vertical	PASS
6	868.08	58.36	1.53	59.89	80.80	20.91	100	324	PK	Vertical	PASS

Note: 1. Result (dB μ V/m) = Reading(dB μ V/m) + Factor (dB) .
 2. Factor (dB) = Antenna Factor (dB/m) + Cable loss (dB) - Pre Amplifier gain (dB).

Notes:

- 1). Measured= Reading- Pre. Fac.+ Ant. Fac.+ Cab. Loss
- 2). Margin = Measured- Limit
- 3). Average values = Peak values + DC factor = Peak values – 0
- 4).point 5 is the fundamental, Limit is 100.80 dB μ V/m, point 6 is the second harmonic, Limit is 80.80 dB μ V/m
- 5).ERP = EMeas + 20log (dMeas) -104.7
 ERP: is the equivalent isotropically radiated power, in dBm
 EMeas: is the field strength of the emission at the measurement distance, in dBuV/m
 dMeas: is the measurement distance, in m

For 1GHz to 5GHz

Peak Value				
Frequency (MHz)	Level (dBUV/m)	Limit Line (dBUV/m)	Margin (dB)	Polarization
1299.78	51.72	74.00	22.28	Horizontal
1733.91	52.95	74.00	21.05	Horizontal
1299.58	53.19	74.00	20.81	Vertical
1733.64	52.62	74.00	21.38	Vertical

Average Value:						
Frequency (MHz)	Level (dBUV/m)	Duty cycle factor	Average value (dBUV/m)	Limit Line (dBUV/m)	Margin (dB)	Polarization
1299.78	51.72	-9.37	42.35	54.00	11.65	Horizontal
1733.91	52.95	-9.37	43.58	54.00	10.42	Horizontal
1299.58	53.19	-9.37	43.82	54.00	10.18	Vertical
1733.64	52.62	-9.37	43.25	54.00	10.75	Vertical

Notes:

- 1). Measuring frequencies from 9 KHz~10th harmonic (ex. 5GHz), No emission found between lowest internal used/generated frequency to 30MHz.
- 2). Radiated emissions measured in frequency range from 9 KHz~10th harmonic (ex. 5GHz) were made with an instrument using Peak detector mode.
- 3). Data of measurement within this frequency range shown " --- " in the table above means the reading of emissions are attenuated more than 20dB below the permissible limits or the field strength is too small to be measured.

4.3. Transmission Cease Time

TEST CONFIGURATION



TEST PROCEDURE

Maximizing procedure was performed on the highest emissions to ensure that the EUT complied with all installation combinations. The antenna was all opened.

LIMIT

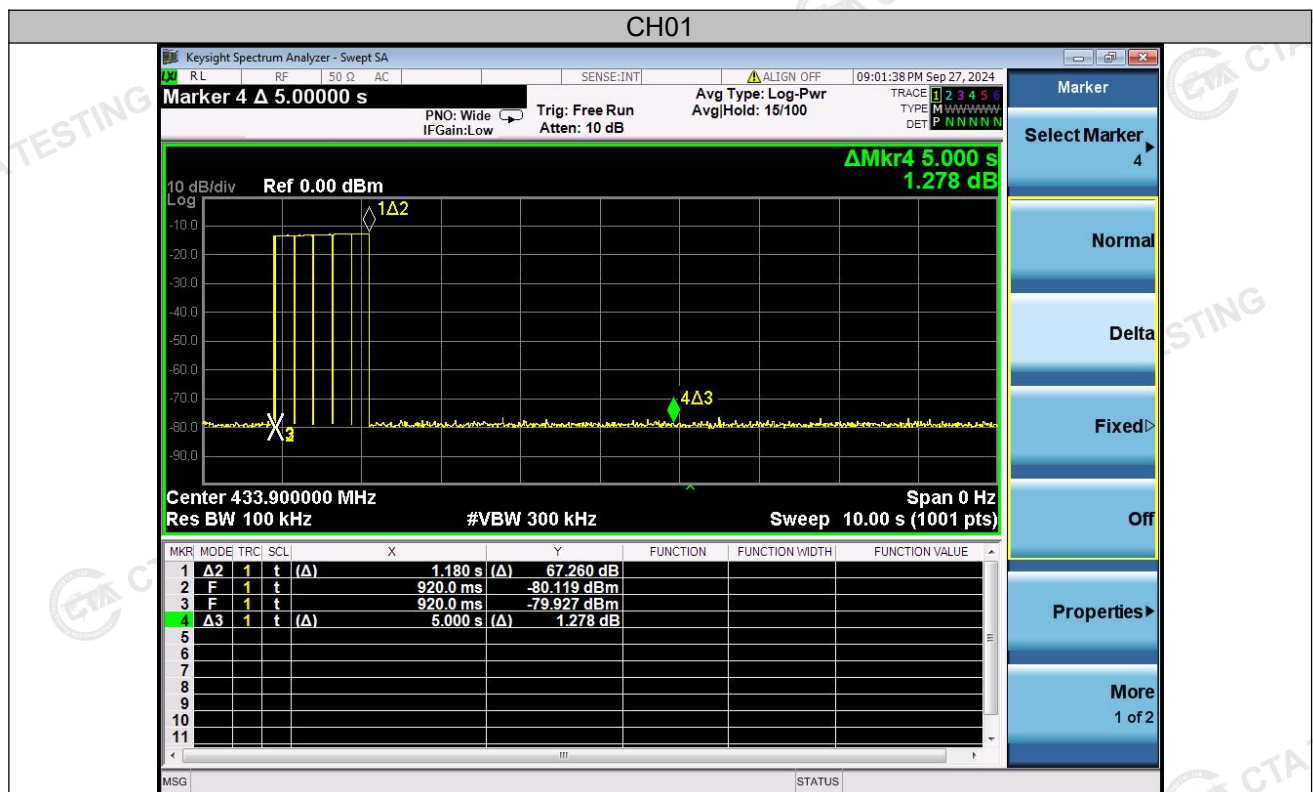
According to RSS-210§A.1.1(a)

A manually operated transmitter shall employ a switch that will automatically deactivate the transmitter within not more than 5 seconds of being released.

TEST RESULTS

Temperature	22.9°C	Humidity	53.2%
Test Engineer	Lushan Kong	Configurations	SRD

Frequency (MHz)	Transmission cease Time (s)	Limit: not more than 5 seconds of being released (s)	Conclusion
433.92	1.18	5	PASS



4.4. 20dB Bandwidth Emissions

TEST CONFIGURATION



TEST PROCEDURE

With the EUT's antenna attached, the EUT's 20dB Bandwidth power was received by the test antenna which was connected to the spectrum analyzer with the START and STOP frequencies set to the EUT's operation band.

LIMIT

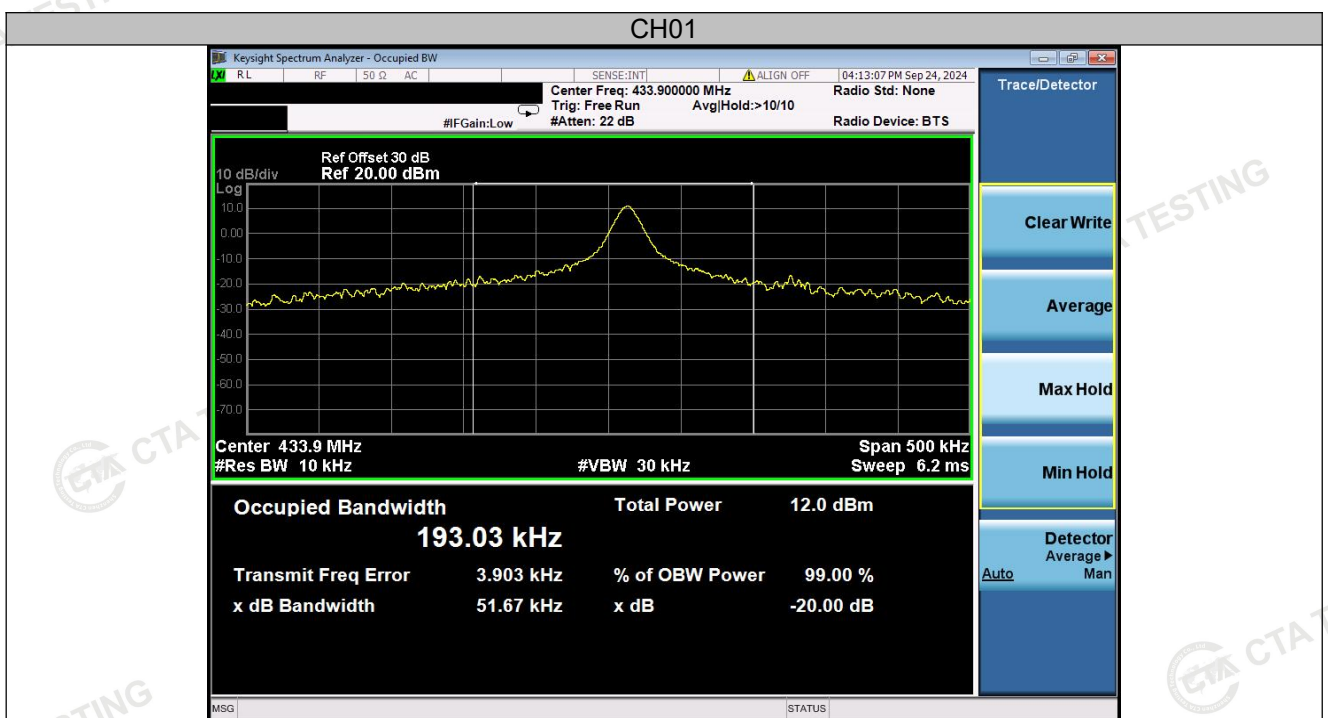
According to RSS-210§A.1.3

The occupied bandwidth of momentarily operated devices shall be less than or equal to 0.25% of the centre frequency for devices operating between 70 MHz and 900 MHz. For devices operating above 900 MHz, the occupied bandwidth shall be less than or equal to 0.5% of the centre frequency.

TEST RESULTS

Temperature	22.9°C	Humidity	53.2%
Test Engineer	Lushan Kong	Configurations	SRD

Transmit Frequency (MHz)	Limit (kHz)	20dB Bandwidth(kHz)	99% Bandwidth(kHz)	Result
433.92	1084.8	51.67	193.03	PASS
Maximum allowed bandwidth:	<input checked="" type="checkbox"/> 0.25% of the centre operating frequency <input type="checkbox"/> 0.5% of the centre operating frequency			
RBW:	<input checked="" type="checkbox"/> 10kHz <input type="checkbox"/> 100kHz <input type="checkbox"/> other 30kHz			
VBW:	<input checked="" type="checkbox"/> 30kHz <input type="checkbox"/> 300kHz <input type="checkbox"/> other 100kHz			

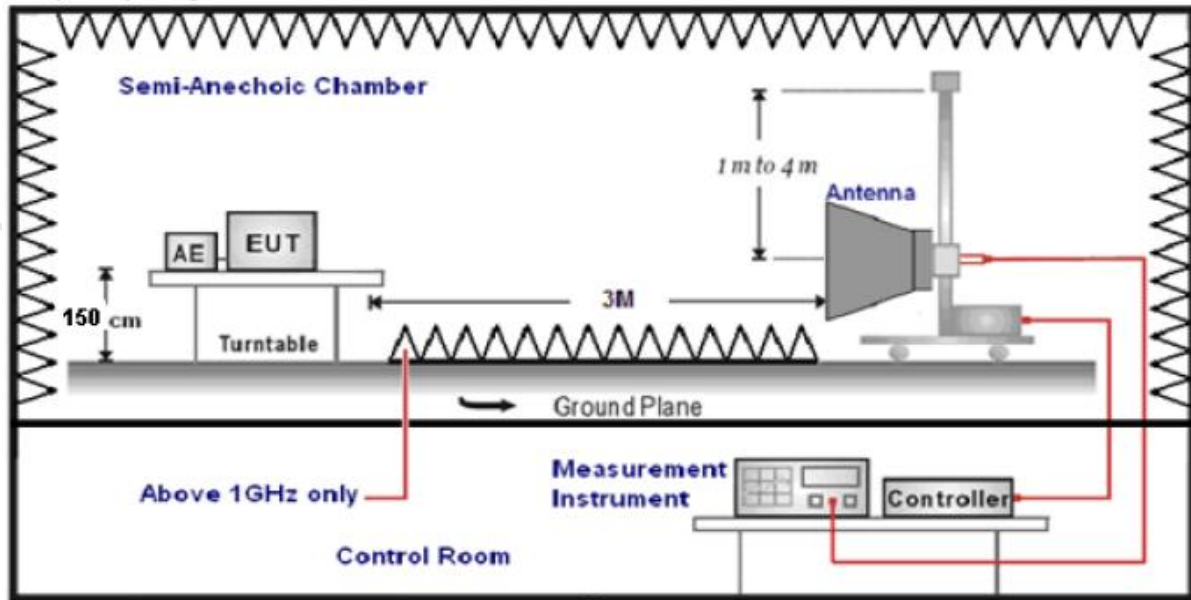


4.5. Duty cycle

TEST REQUIREMENT

According to §RSS-210§A.1.2(b): Unwanted emissions shall be 10 times below the fundamental emissions field strength limits in table A1 or comply with the limits specified in RSS-Gen, whichever is less stringent:

TEST CONFIGURATION



TEST PROCEDURE

1. Place the EUT on the table and set it in transmitting mode.
2. Remove the antenna from the EUT and then connect a low loss RF cable from the antenna port to the spectrum analyser.
3. Set centre frequency of spectrum analyser = operating frequency.
4. Set the spectrum analyser as RBW=1MHz, VBW=1MHz, Span=0Hz, Adjust Sweep=100ms to obtain the "worst-case" pulse on time
5. Repeat above procedures until all frequency measured was complete.

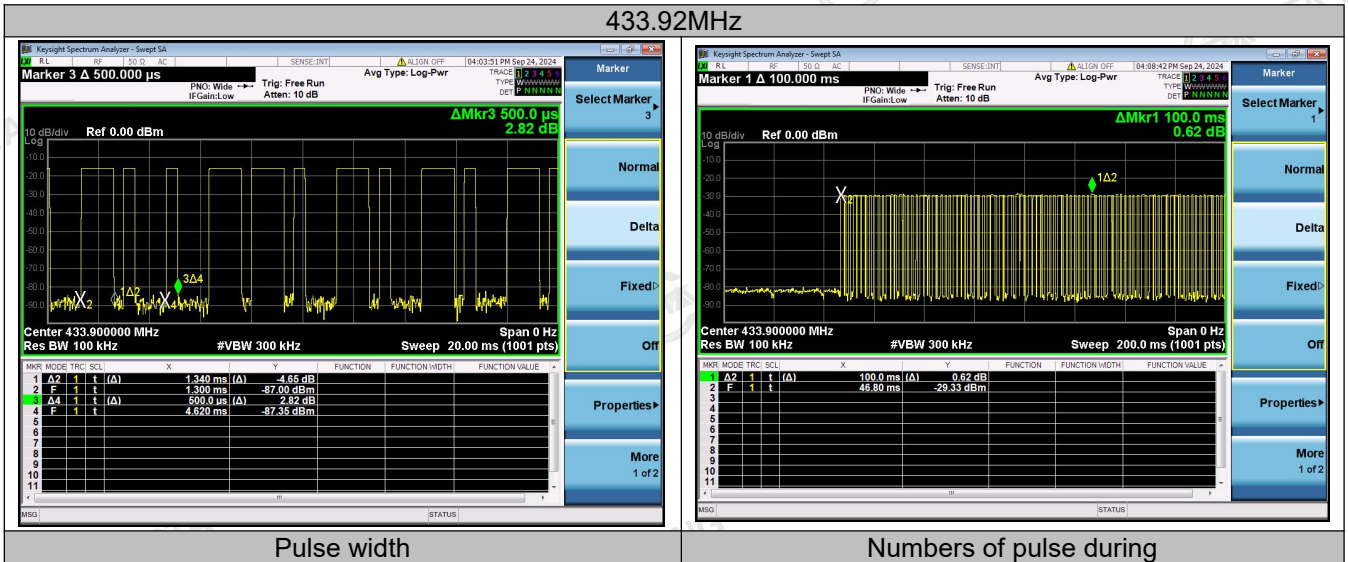
LIMIT

No dedicated limit specified in the Rules.

TEST RESULTS

Ton = (Ton₁* Numbers of pulse during)+ (Ton₂* Numbers of pulse during)=1.34*3+0.50*60= 34.02 (ms)
 Tp = 100 (ms)
 The duty cycle = 34.02/100=34.02%
 Average Correction Factory = 20*log (Ton/Tp) =20*log (0.34) = -9.37dB

Temperature	22.9°C	Humidity	53.2%
Test Engineer	Lushan Kong	Configurations	SRD



Pulse width

Numbers of pulse during

4.6. Antenna Requirement

Standard Applicable

According to § 15.203 & RSS-Gen, An intentional radiator shall be designed to ensure that no antenna other than that furnished by the responsible party shall be used with the device. The use of a permanently attached antenna or of an antenna that uses a unique coupling to the intentional radiator shall be considered sufficient to comply with the provisions of this section.

Test Result

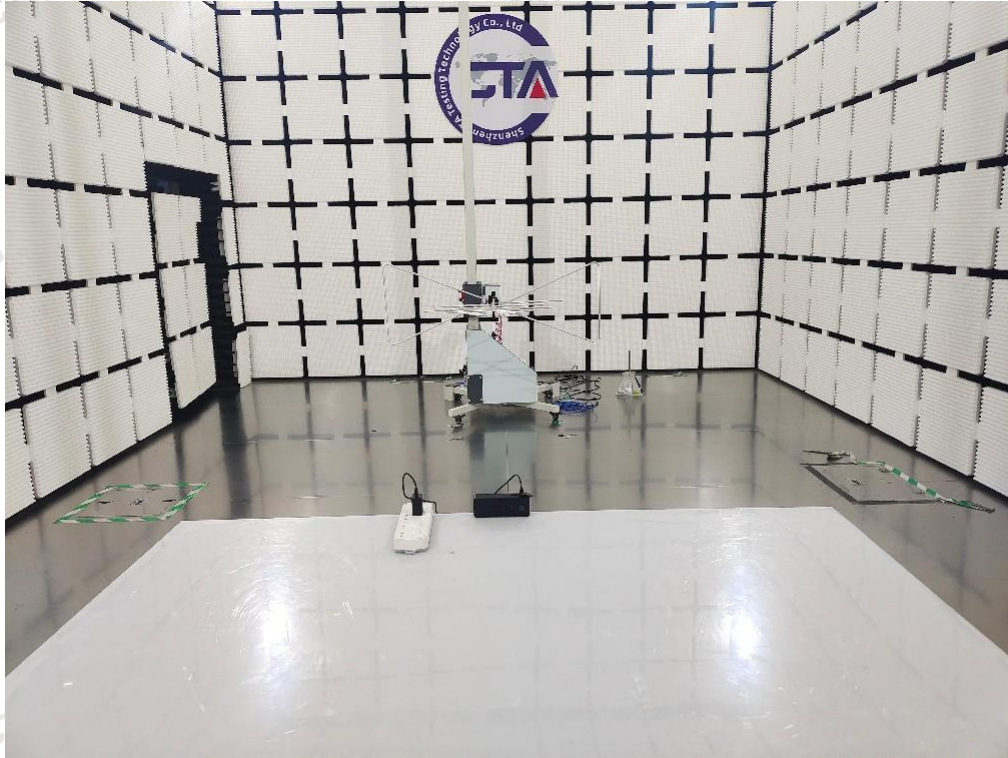
The antenna used for this product is FPC Antenna and that no antenna other than that furnished by the responsible party shall be used with the device, the maximum peak gain of the transmit antenna is only 0.59dBi.

Reference to the **Internal photos**.

5. TEST SETUP PHOTOS OF THE EUT

Adapter: TPA-46B050100UU

Radiated Emission

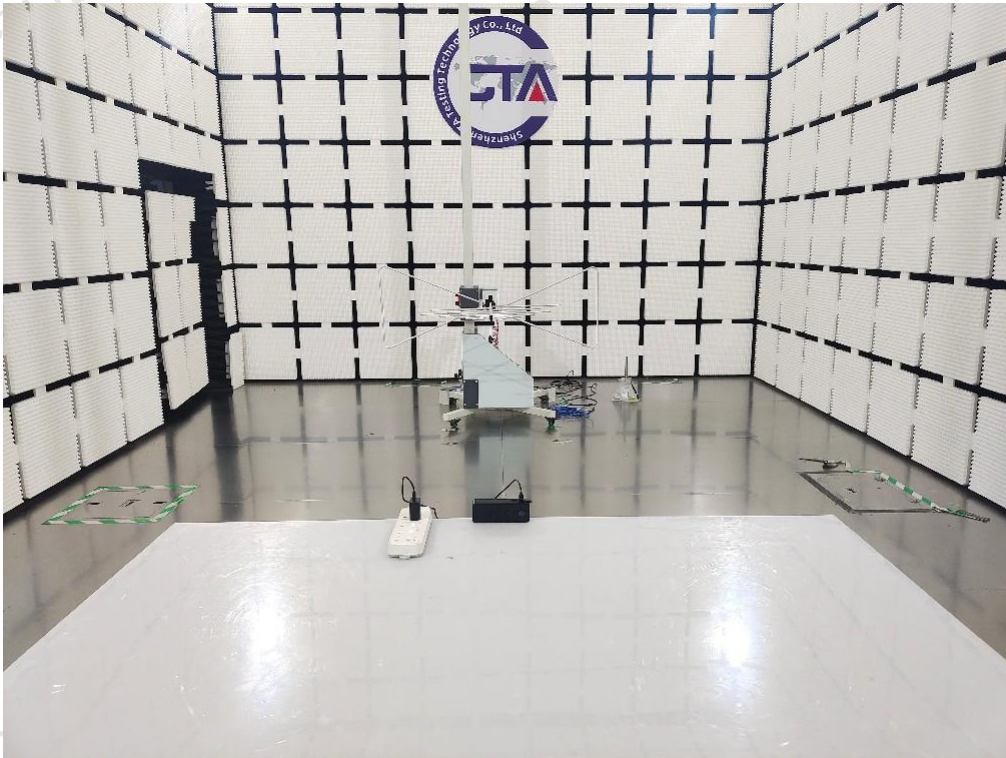


Conducted Emission



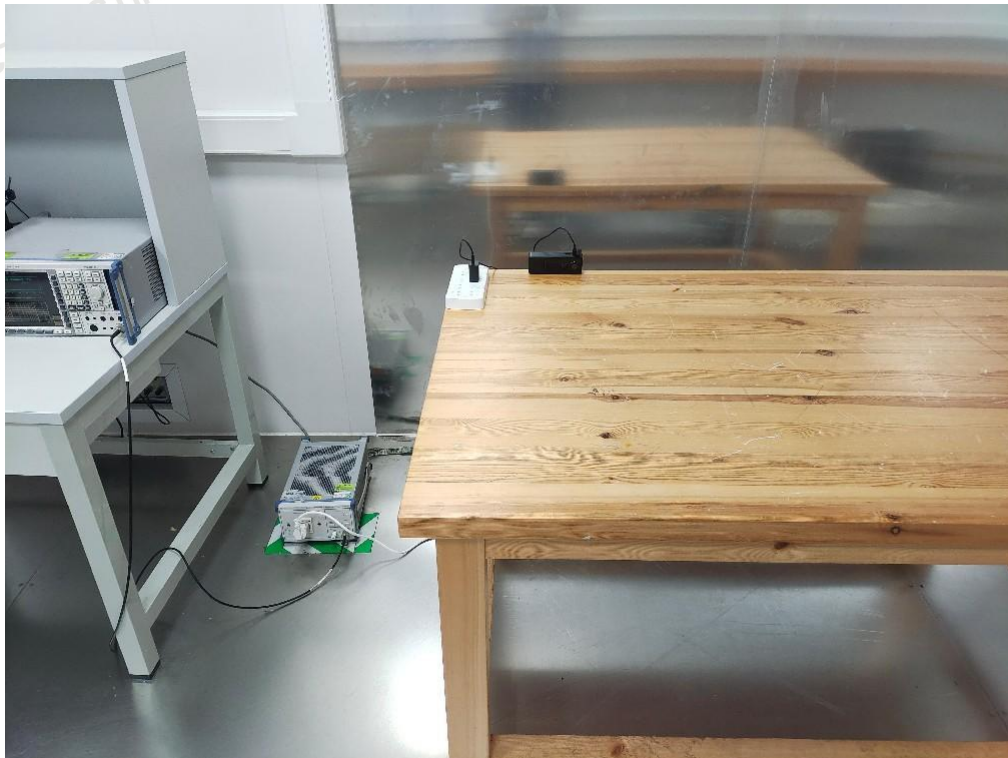
Adapter:DCT07W050100US-C1

Radiated Emission





Conducted Emission



6. EXTERNAL AND INTERNAL PHOTOS OF THE EUT



Fig. 1



Fig. 2



Fig. 3



Fig. 4



Fig. 5



Fig. 6



Fig. 7



Fig. 8



Fig. 9



Fig. 10



Fig. 11

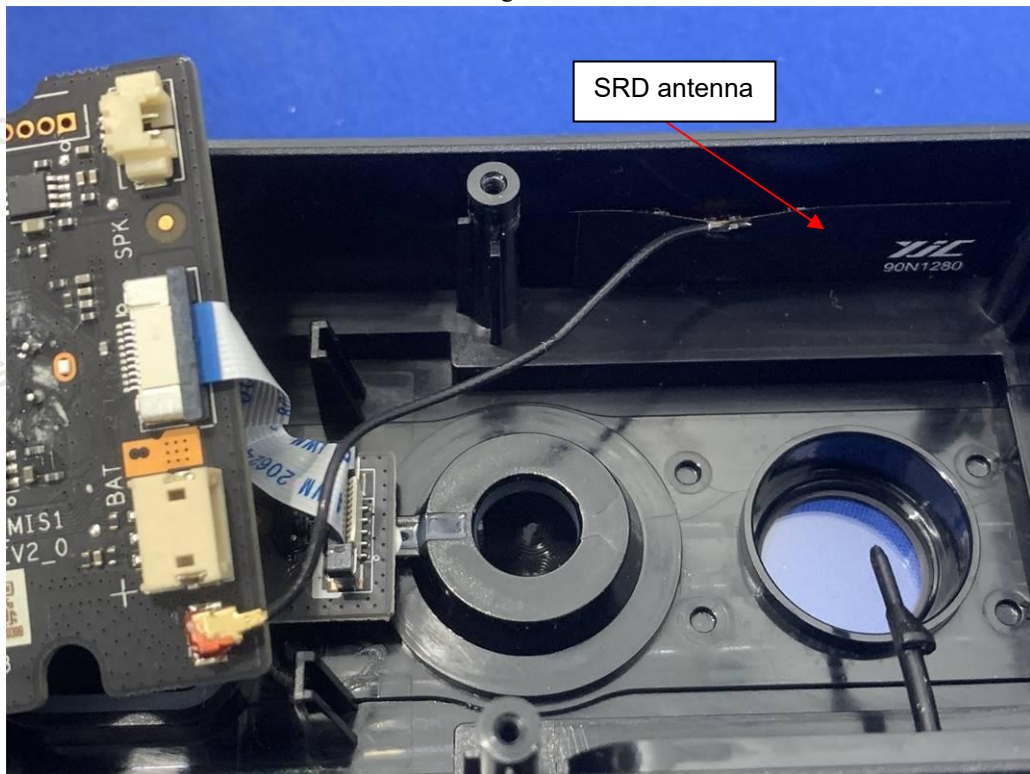


Fig. 12

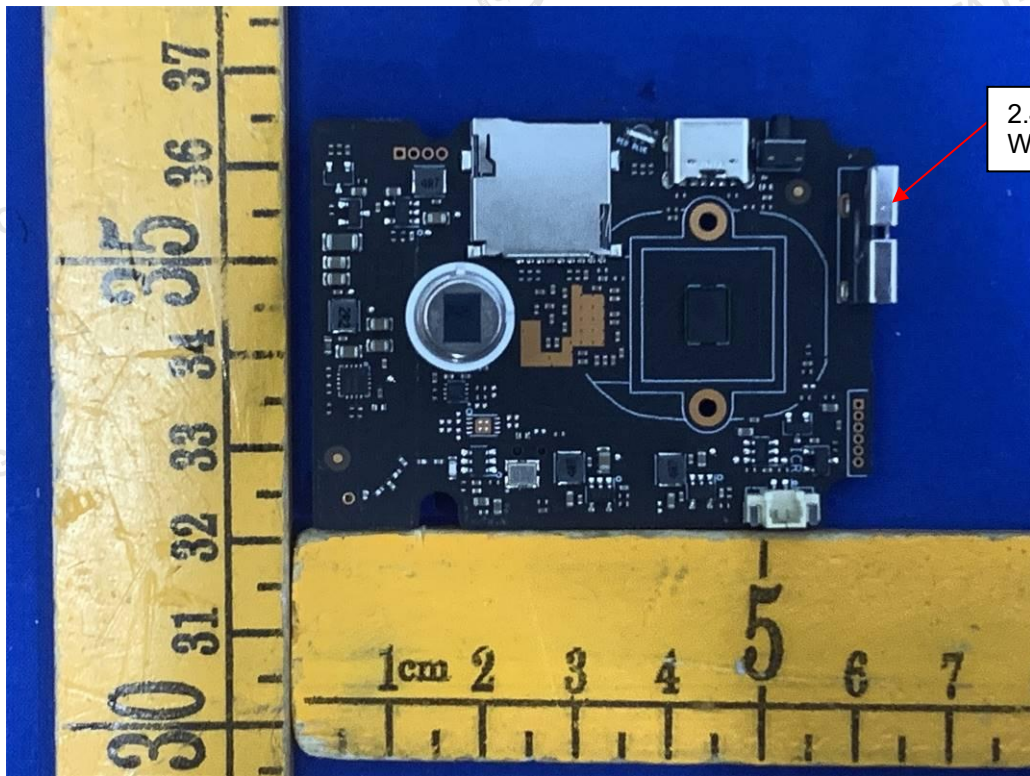


Fig. 13

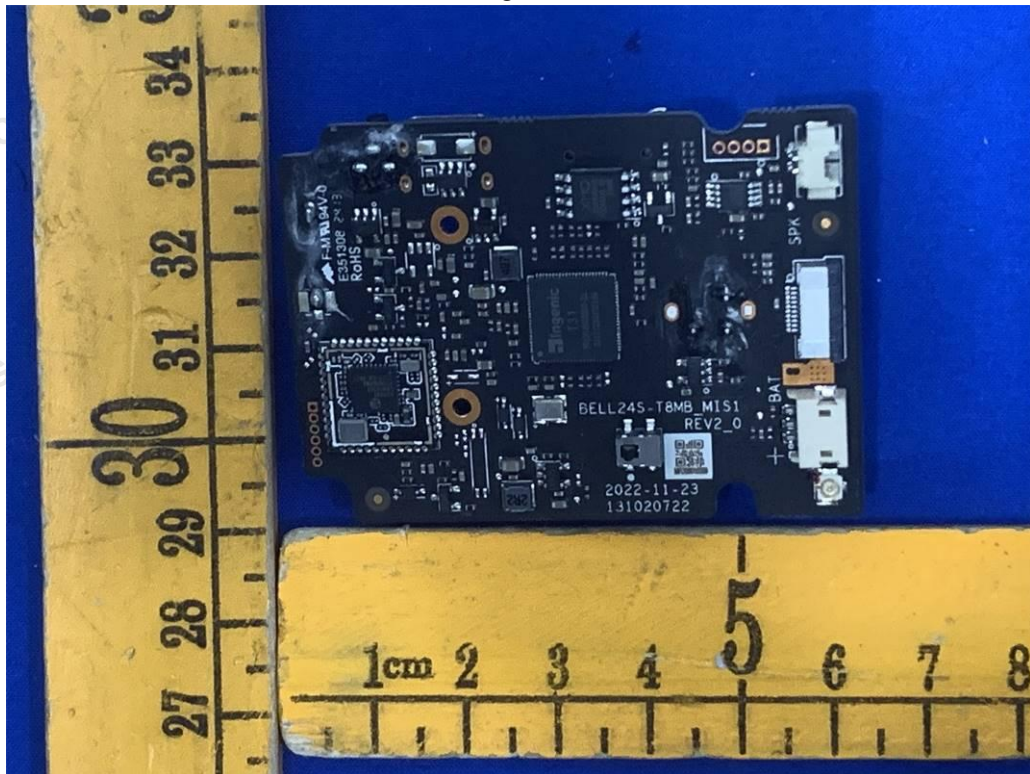


Fig. 14

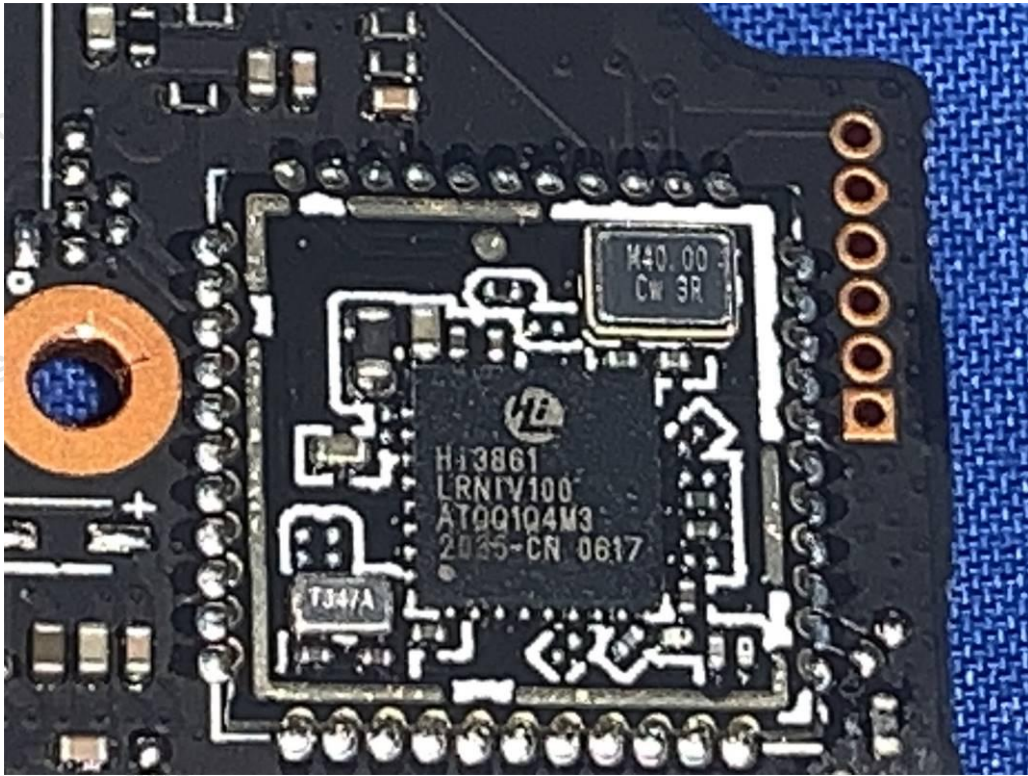


Fig. 15



Fig. 16

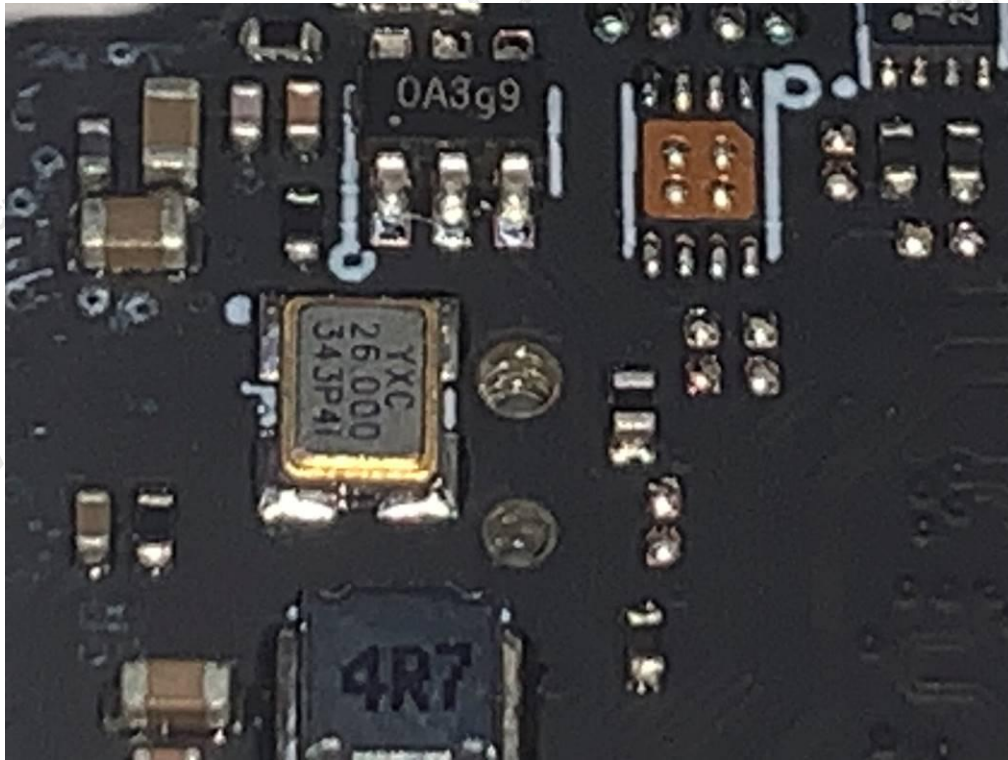


Fig. 17



Fig. 18

.....End of Report.....