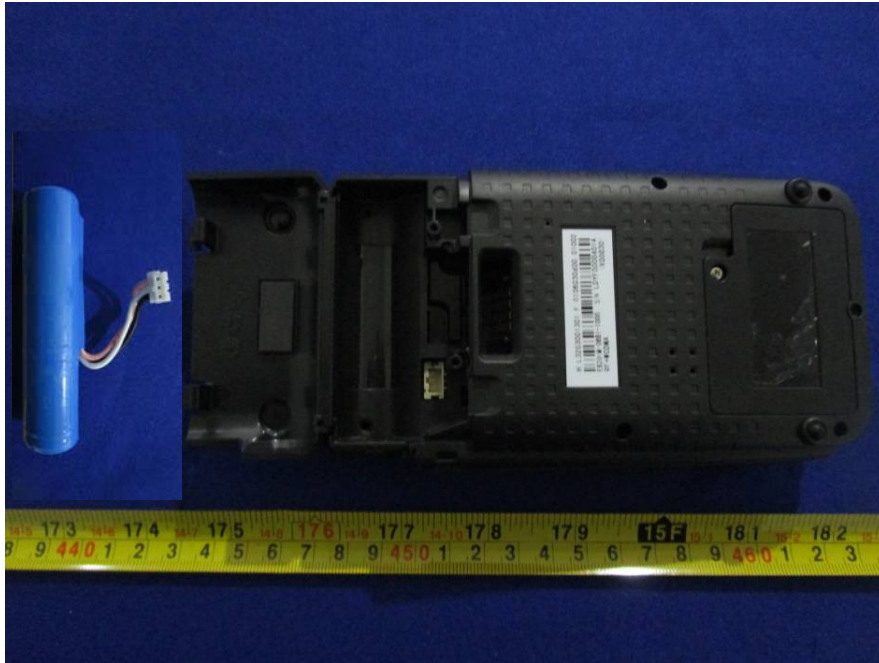


EXHIBIT C - EUT INTERNAL PHOTOGRAPHS

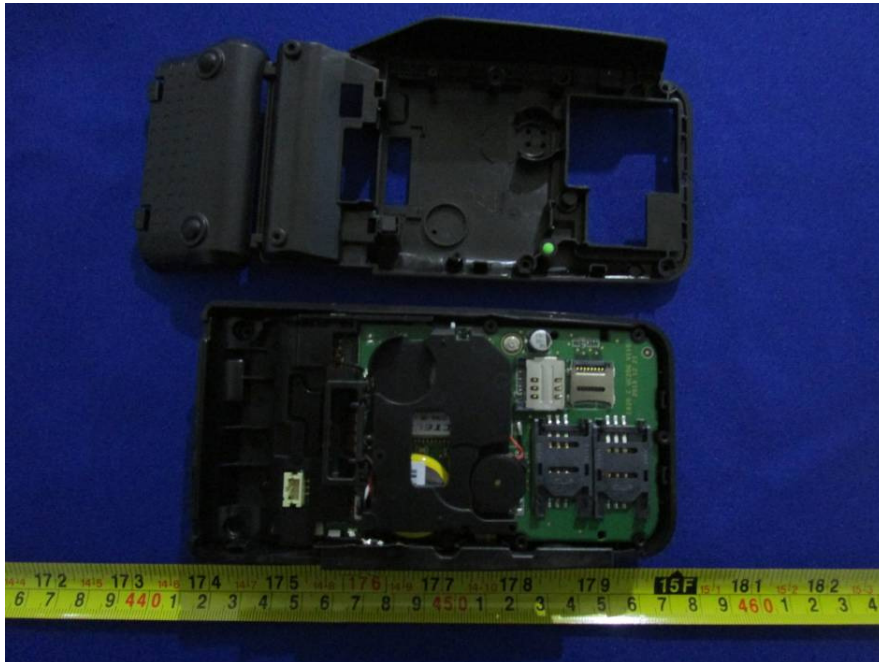
EUT- Uncover View



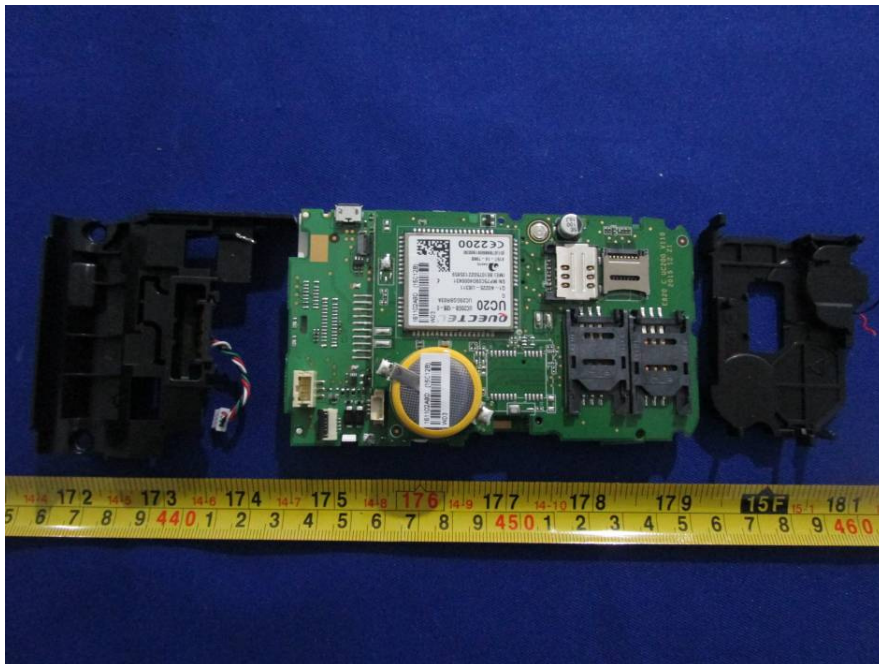
EUT- Uncover View



EUT- Uncover View



EUT- Uncover View



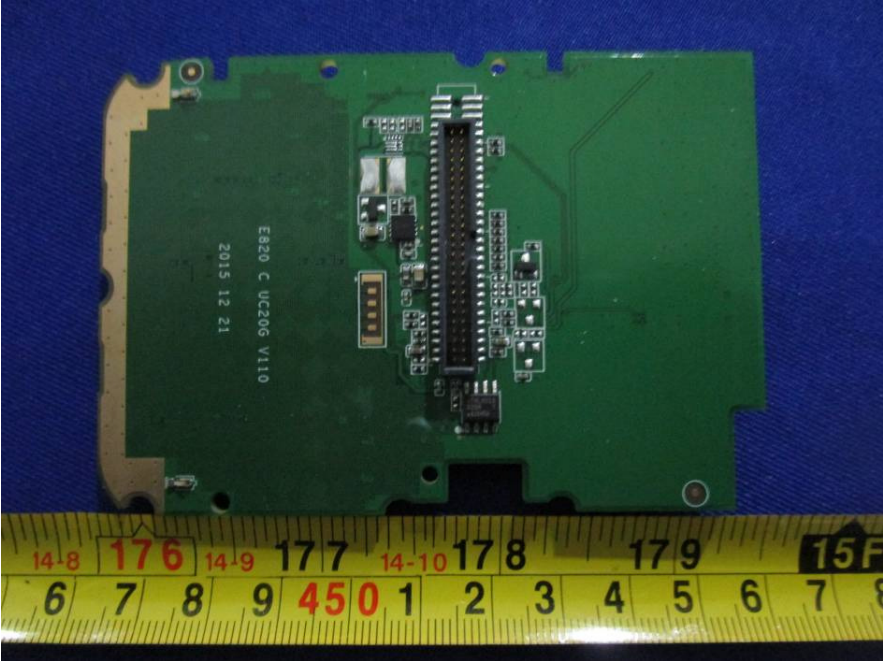
EUT- Uncover View



EUT- Sub Board Top View



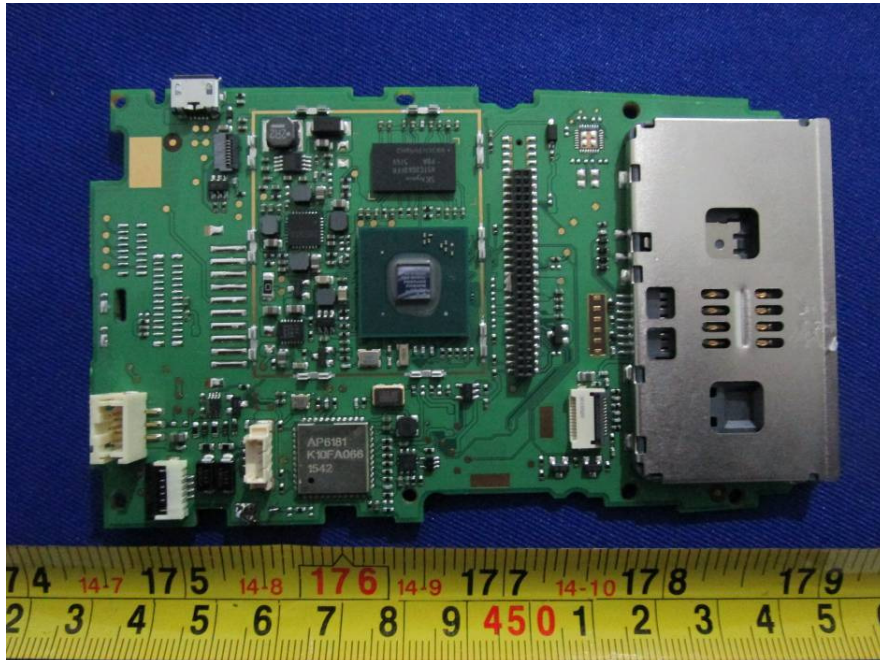
EUT- Sub Board Bottom View



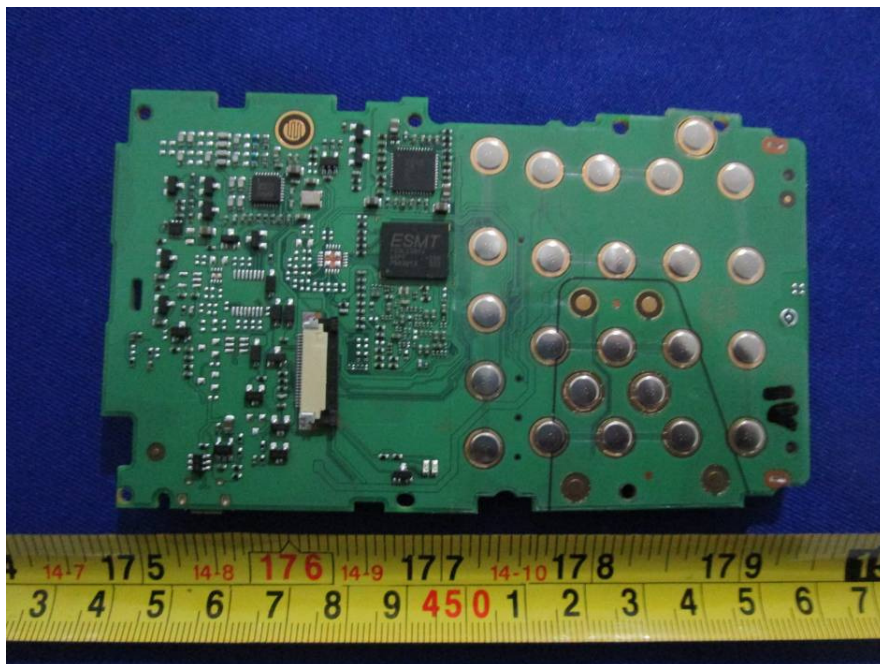
EUT- Uncover View



EUT- Main Board Top View



EUT- Main Board Bottom View



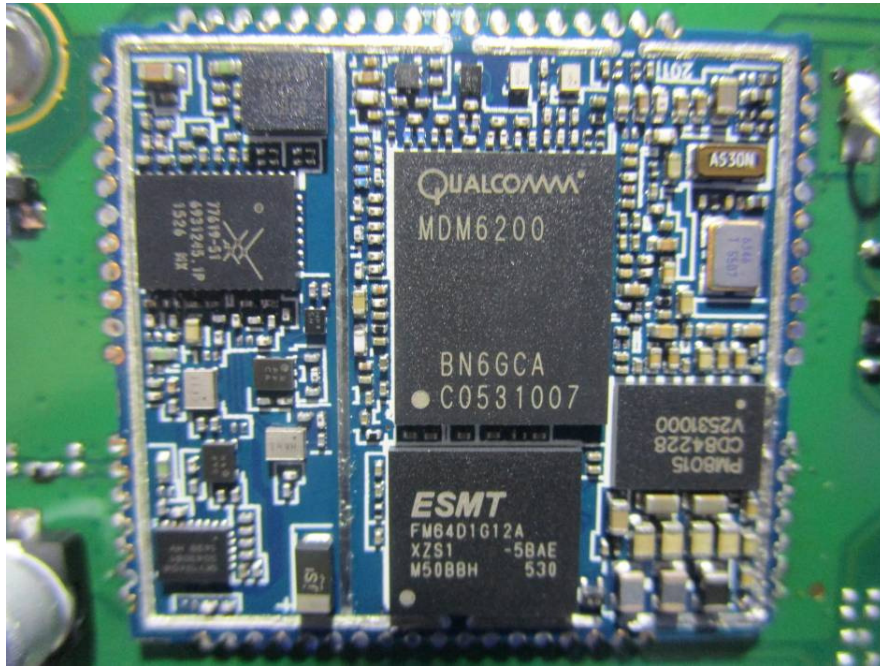
EUT- Wifi Chip View



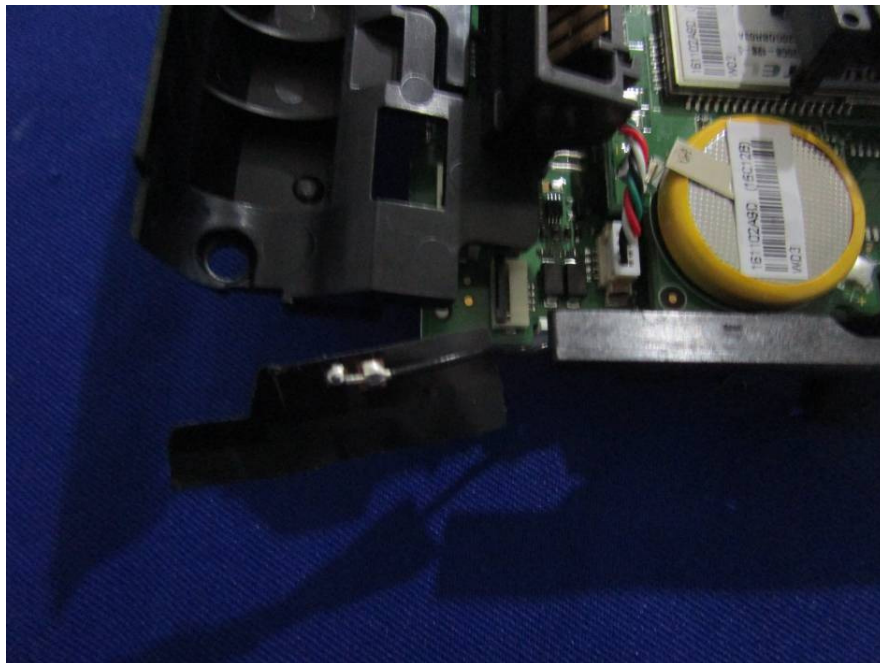
EUT- RF Chip View



EUT- RF Module View



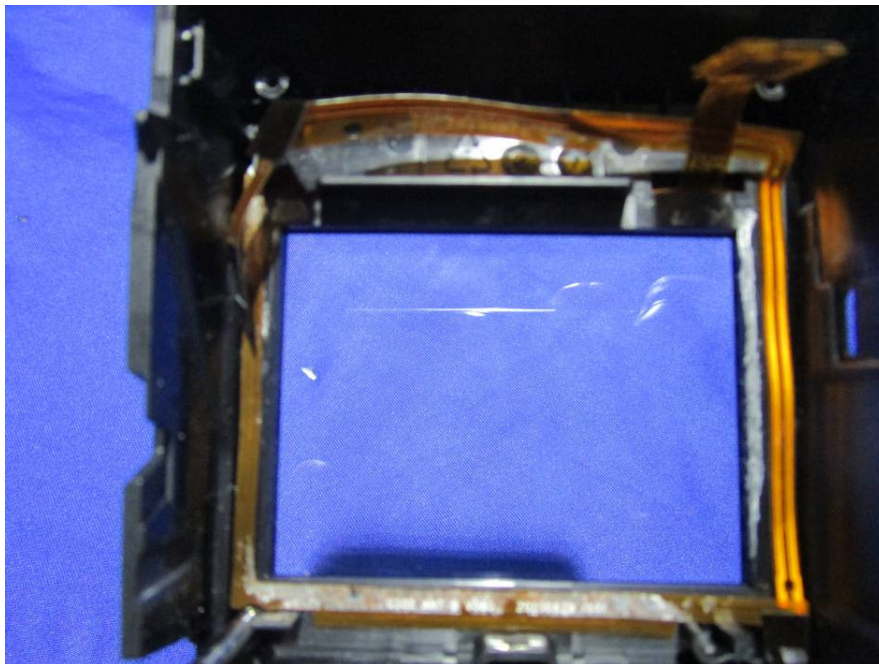
EUT- Wifi Antenna View



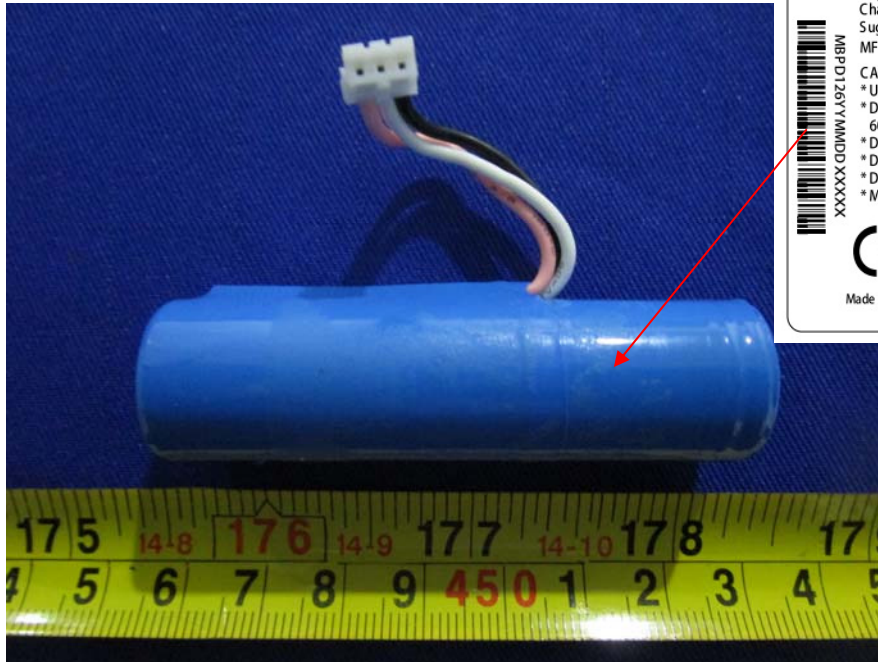
EUT- WCDMA Antenna View



EUT- RFID Antenna View



EUT- Battery View



Model: LD18650C
Voltage: 3.6V
Capacity: 2600mAh/9.36Wh
Charge Voltage: Max 4.2V
Suggest to change the battery for every 24 months
MFD. : YYYY.MM.DD

LANDI
Li-Ion Battery

MBP D126Y MMD0 XXXXX

CAUTION
* Use only specified charger
* Do not expose battery to temperature above 60°C/140°F
* Do not short circuit
* Do not disassemble battery
* Do not throw it into fire or water
* Must be disposed of properly

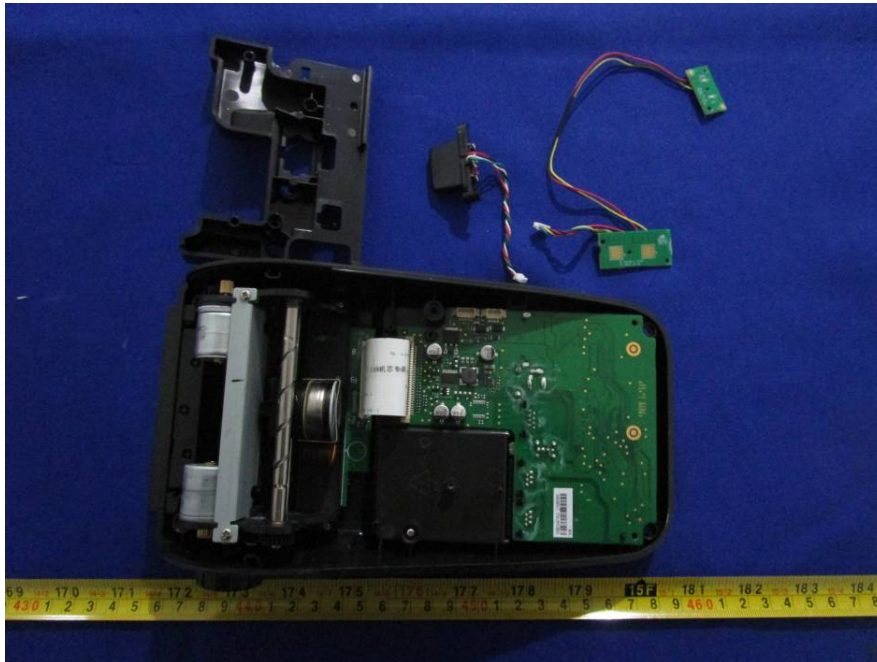
CE 5 ⚠️ ♻️ Li-Ion

Made in China Shenzhen Mbell Electronics Co.,Ltd

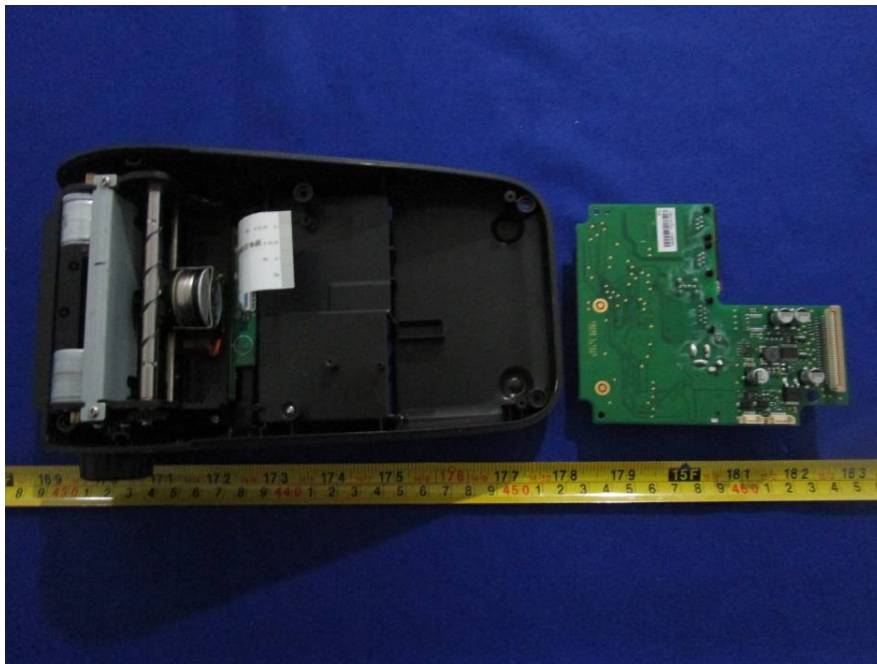
EUT- Base Uncover View



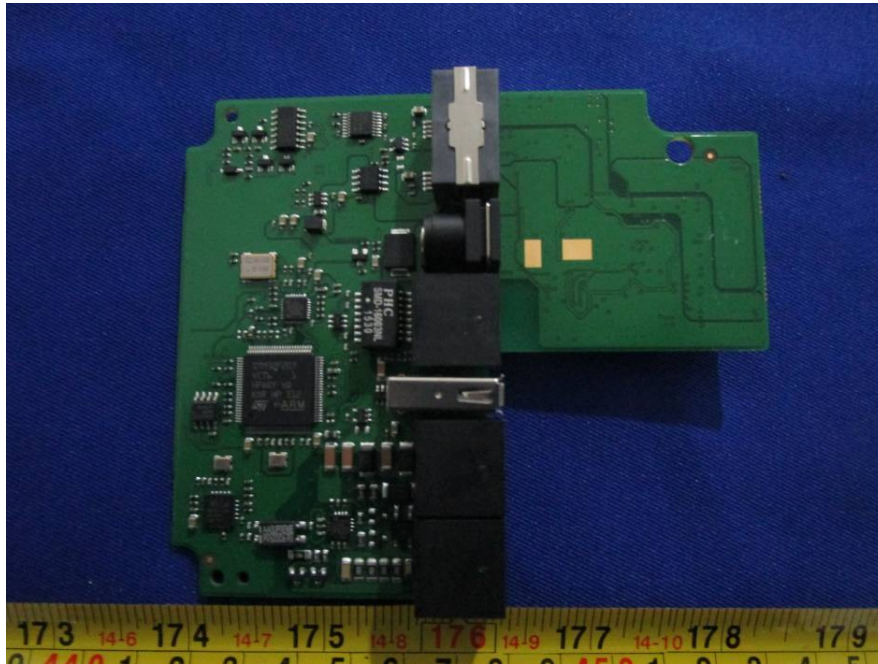
EUT- Base Uncover View



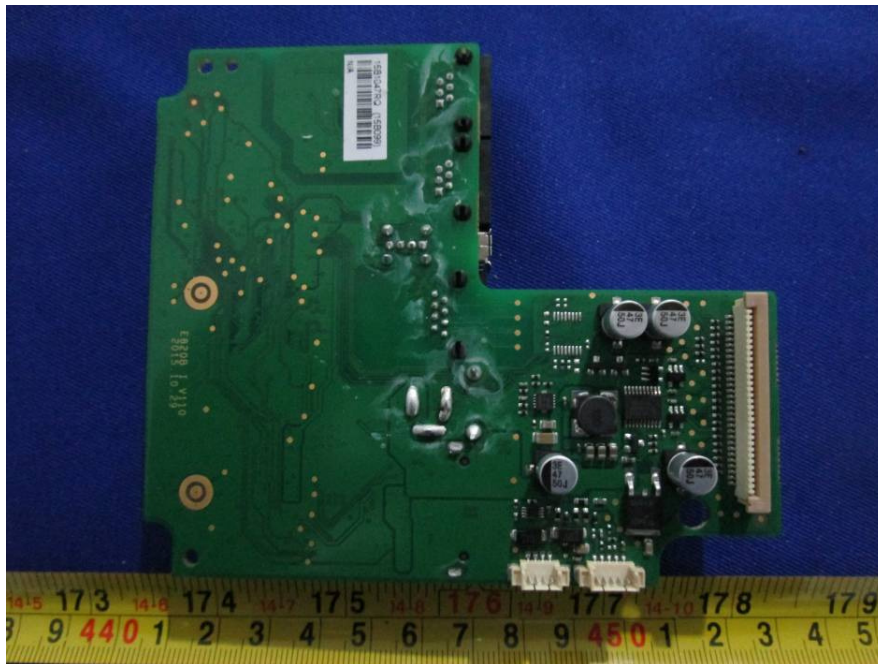
EUT- Base Uncover View



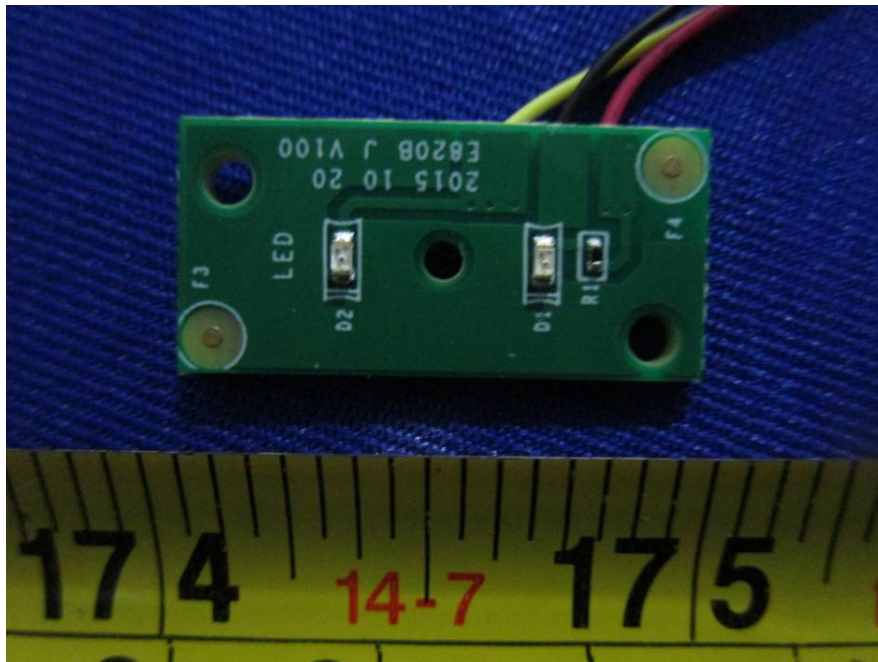
EUT- Base Main Board Top View



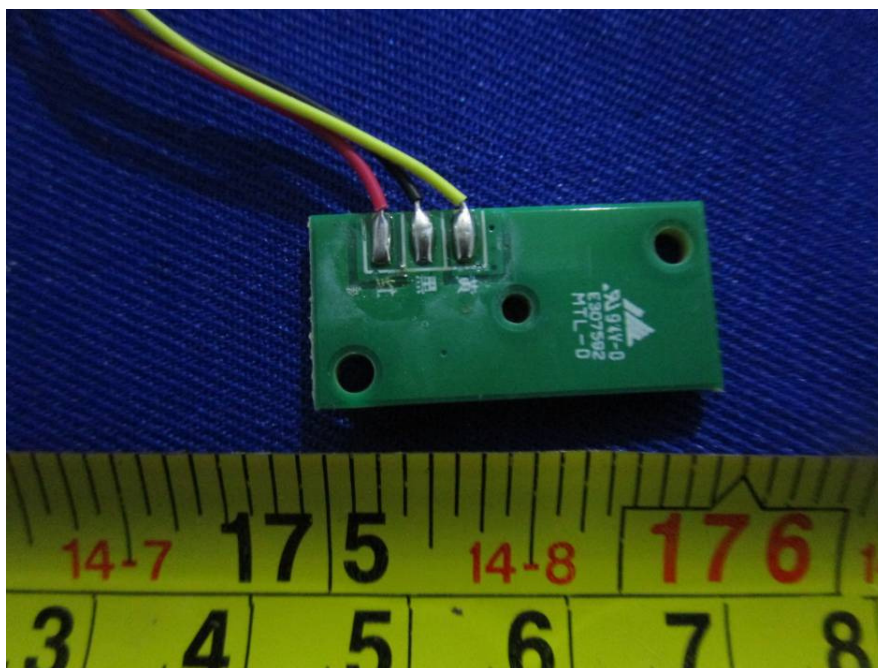
EUT- Base Main Board Bottom View



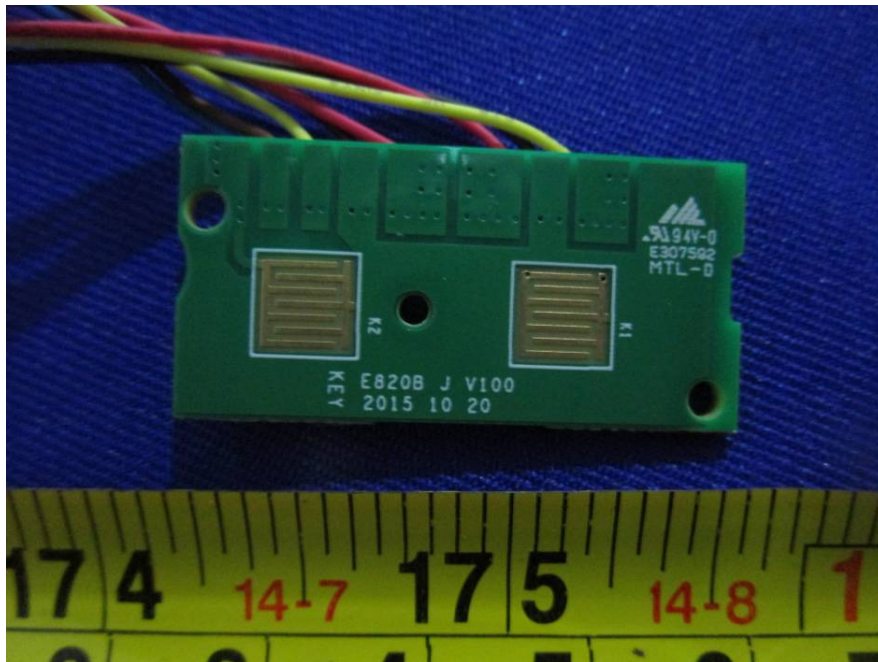
EUT- Base LED Board Top View



EUT- Base LED Board Bottom View



EUT- Base Key Board Top View



EUT- Base Key Board Bottom View

