

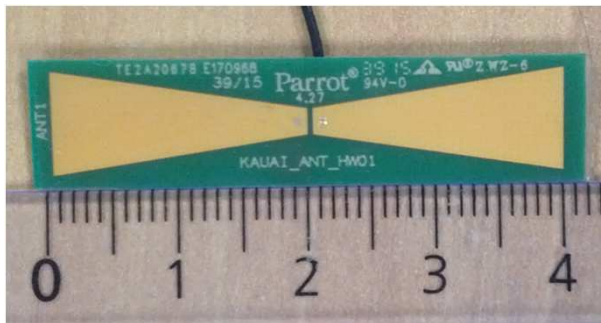
Parrot POT : 3D radiation pattern 3D @2441MHz



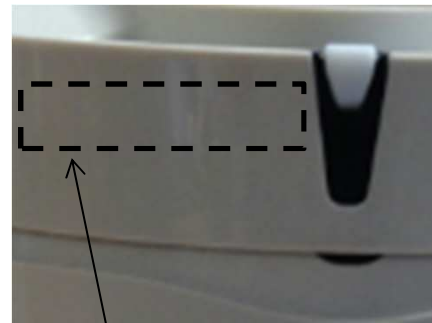
Measured equipments



- Measured sample is a DV2 sample
- Parrot Pot's antenna is a bow tie printed on a FR4 substrate
- It's positioned in the top part of the pot



Antenna dimensions:
43mm x 10mm



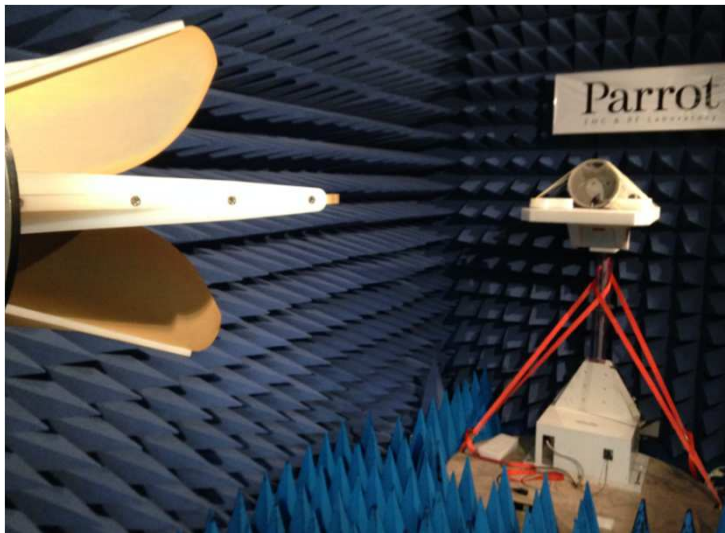
Antenna position



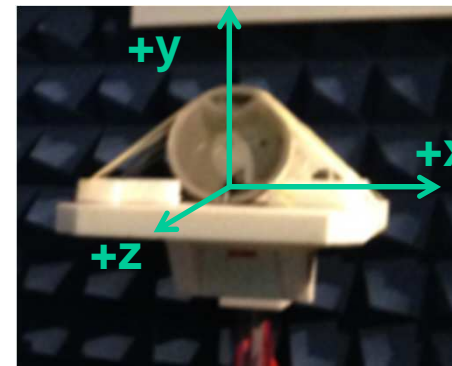
Measurement conditions



- The measurement was made at Parrot Radio test laboratory, with Diagrays3D system
- The product was set in a permanent emission mode of a CW signal @2441MHz
- Conducted output power is 0dBm
- Angular resolution is : 10°
- Measurement uncertainty : ± 1 dB



Banc Diagrays3D



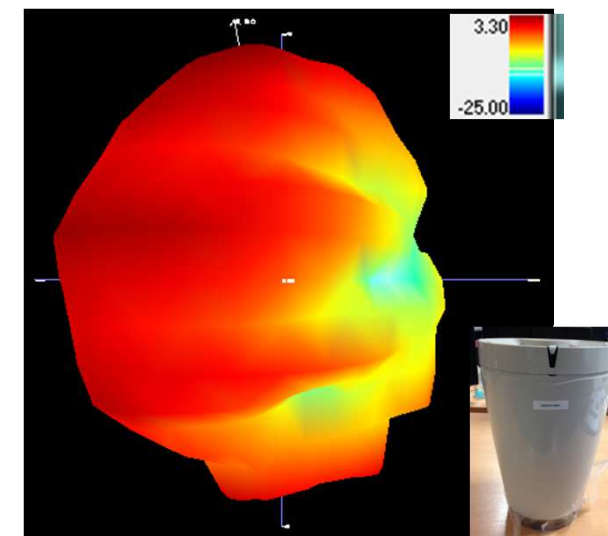
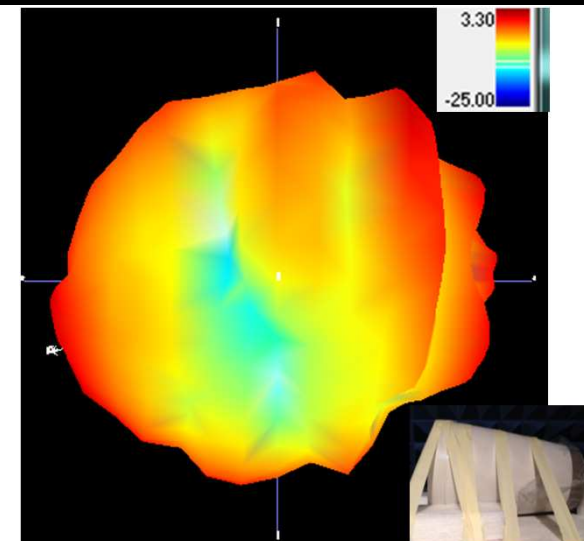
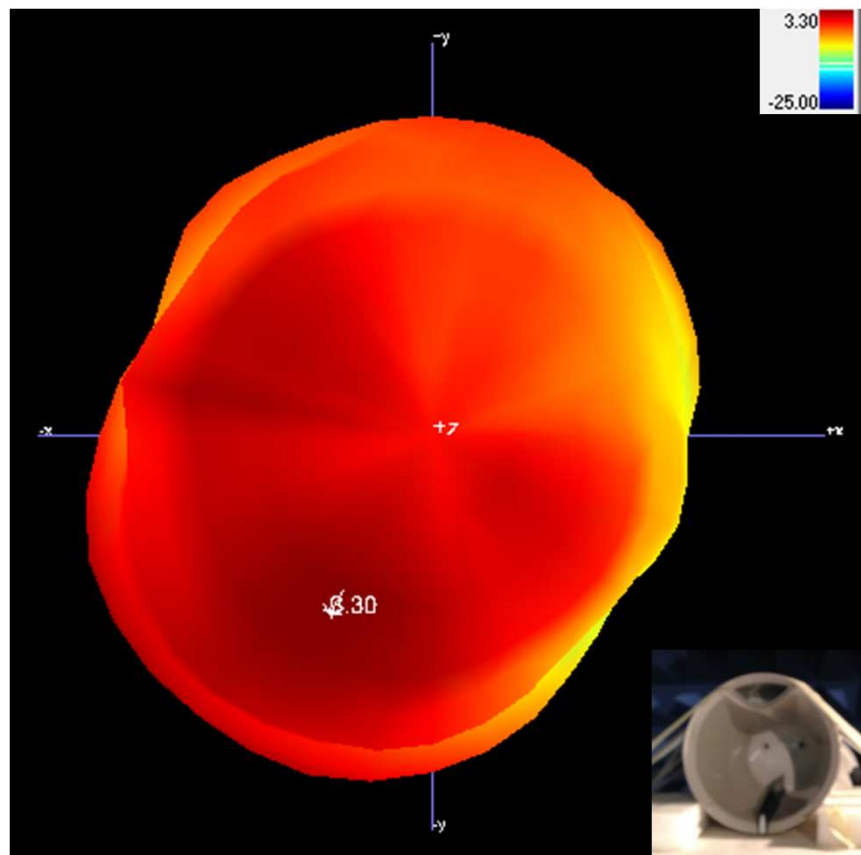
Coordinates system

Parrot POT : 3D radiation pattern @ 2.441GHz

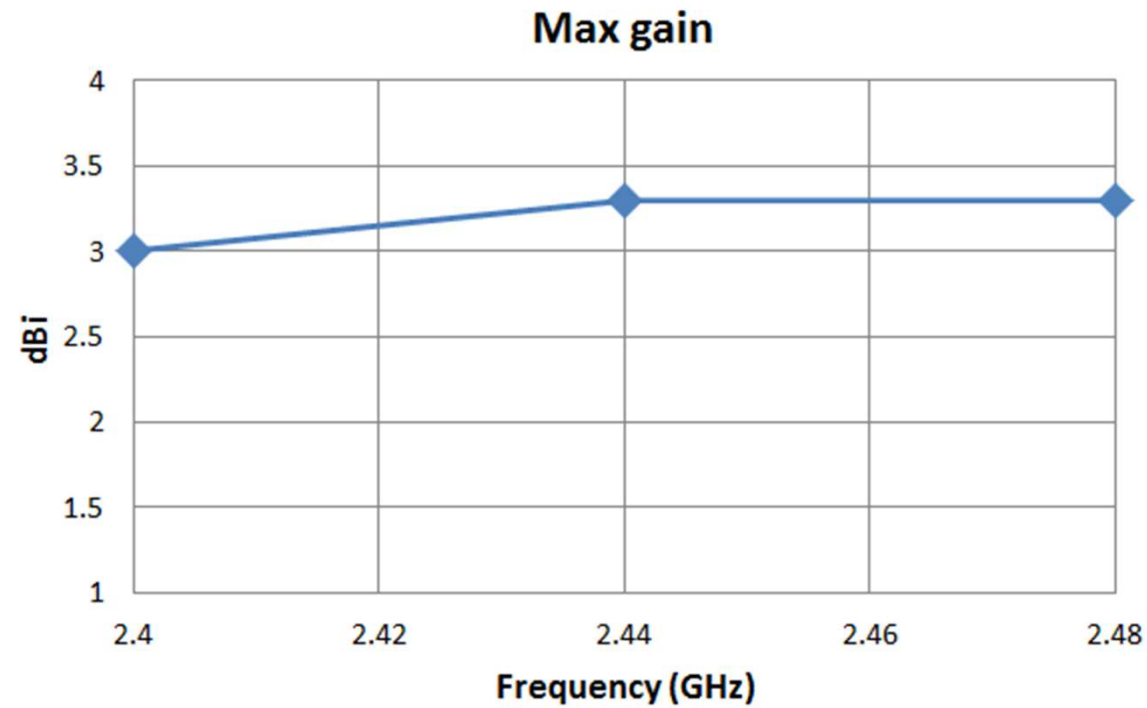


Parrot®

Max gain = 3.3dBi
Min gain = -15dBi
Mean gain 3D= -1.54dBi



Parrot POT : Max gain VS frequency





www.parrot.com

PARROT S.A.
174, quai de Jemmapes
F-75010 Paris
T: +33 1 48 03 60 60