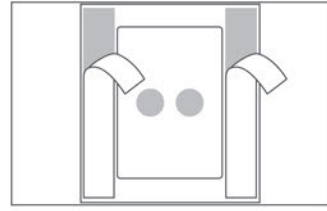


Specifications

- Battery Model: CR2032 (3V 220mAh)
- Working Current: Maximum 25mA
- Communication Protocol: 2.4GLettin
- Frequency Band: 2.405GHz~2.475GHz
- Max. Range Indoor: 12m
- Radio-frequency Power: 3.5dBm
- Connect to up to 80 Lettin devices

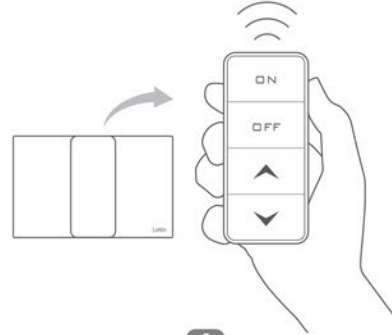
Installation >

Place it anywhere you want by using the adhesive tape on the back plate of the switch.



1

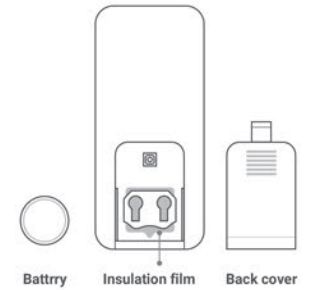
Lettin wireless remote is magnetic and can be taken out from the base mount and used as a remote control in any room with Lettin devices.



3

Battery >

For the first-use, please open the back cover and remove the battery, tear off the insulation film, then reload the battery to activate the switch.



5

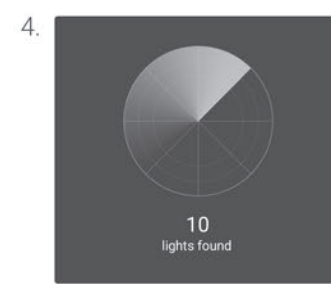
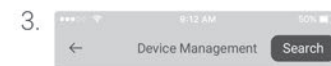
Configuration >

Set up with Lettin HQ or Lebo

Enter Lettin App, go to "My Lettin" - "Device Management" - tap "Search" on the upper right corner, the system will search for Lettin devices automatically.

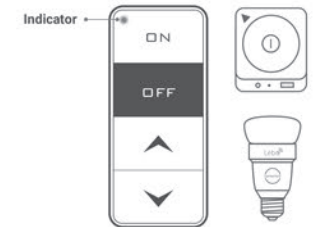


7



9

Put Lettin wireless switch close to your Lettin HQ or Lebo. Press and Hold "OFF" button for 4 seconds to start, the indicator should be red. Wait for several seconds, the indicator will flash in green when the switch is added to the network successfully. During the process, you can press any button to exit.



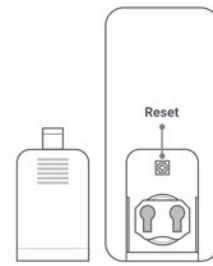
10

After successful configuration, Lettin Wireless Switch can be found in the Device Center.



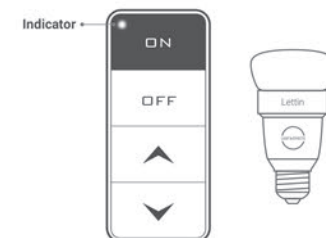
11

Confirm that the Lettin wireless switch and Lettin bulbs that need to be configured are not added to any Lettin HQ or Lebo before. If they have been added, follow the instructions to factory reset them before the configuration.



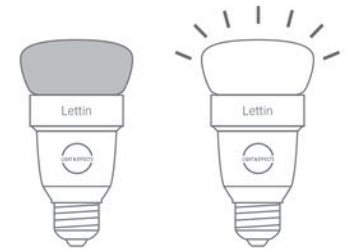
13

Put the switch close to your Lettin bulbs. Press and Hold "ON" button for 4 seconds to start, the indicator should be red. Wait for several seconds, the indicator will flash in green when the switch is added to the network successfully. During the process, you can press any button to exit.



14

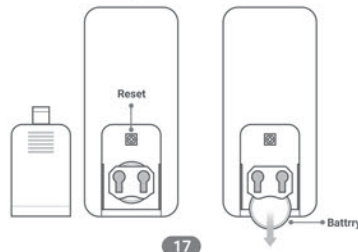
After configuration completed, the Lettin bulbs will be turned off instantly, then light up after several seconds.



15

Set Up Without Lettin HQ or Lebo

- **Restart:** If you can not control the lights or any abnormal situation happens, you may open the back cover of the switch, take out the battery and reload it. The switch will be restarted without any loss of your settings.
- **Reset:** If the restart does not work, you may press the "Reset" button to recover your switch to factory reset. All the settings will be deleted.



17

Restart and Reset >

16

Notice and Warranty >

Notice

- Lettin product is not compatible with dimmers from other brands.
- Products are not rated for damp environments such as bathrooms or covered outdoor areas.
- Modifying or dis-assembling products will effectively void the warranty of the products.
- Bulb surface temperature may increase after long period of use. Please avoid direct contact before the device cools down.
- Keep the products away from children when powered on.



19

Warranty

Two-year warranty is provided to the light source products, one-year to the accessories. The warranty is available when the customer presents credentials such as: receipts, electronic receipts, invoices, or transaction numbers.

- The following conditions do not apply to warranty:**
- Warranty period has ended.
 - Unauthorized maintenance, misuse, collision, negligence, water damage, improper installation, and altered labeling.
 - Improper or altered product packaging, accessories, and missing purchase documentation.
 - Environmental factors such as lighting, flood, fire, or other factors.
 - Due to a force majeure.

20

Cleaning & Maintenance

When connected to power, do not attempt to clean the light bulb or lighting fixture. Ensure power is off for the fixture and light bulb, and use a soft dry cloth to clean the surfaces. Do not use any chemical or cleaning.

Disposal & Recycling

This product has been designed to be recyclable, from the outer assembly to the circuit boards. Do not place product into garbage disposal. Place product in the correct recycling receptacle.



21

FCC Warning

Federal Communication Commission Interference Statement

This equipment has been tested and found to comply with the limits for a Class B digital device, pursuant to Part 15 of the FCC Rules. These limits are designed to provide reasonable protection against harmful interference in a residential installation. This equipment generates, uses, and can radiate radio frequency energy and, if not installed and used in accordance with the instructions, may cause harmful interference to radio communications. However, there is no guarantee that interference will not occur in a particular installation. If this equipment does cause harmful interference to radio or television reception, which can be determined by turning the equipment off and on, the user is encouraged to try to correct the interference by one or more of the following measures:

- Reorient or relocate the receiving antenna.
- Increase the separation between the equipment and receiver.
- Connect the equipment into an outlet on a circuit different from that to which the receiver is connected.
- Consult the dealer or an experienced radio/TV technician for help.

FCC Caution:

- This device complies with Part 15 of the FCC Rules. Operation is subject to the following two conditions:
- (1) This device may not cause harmful interference
- (2) This device must accept any interference received, including interference that may cause undesired operation.

Any changes or modifications not expressly approved by the party responsible for compliance could void the user's authority to operate this equipment. This device and its antenna(s) must not be collocated or operating in conjunction with any other antenna or transmitter.

FCC Radiation Exposure Statement:

This equipment complies with FCC radiation exposure limits set forth for an uncontrolled environment.

ISED Warning:

This device complies with Innovation, Science and Economic Development Canada license-exempt RSS standard(s). Operation is subject to the following two conditions:

- (1) This device may not cause interference, and
- (2) This device must accept any interference, including interference that may cause undesired operation of the device.

Le présent appareil est conforme aux CNR d'Innovation Science et Développement économique Canada applicables aux appareils radio exempts de licence. L'exploitation est autorisée aux deux conditions suivantes:

- (1) l'appareil ne doit pas produire de brouillage, et
- (2) l'utilisateur de l'appareil doit accepter tout brouillage radioélectrique subi, même si le brouillage est susceptible d'en compromettre le fonctionnement.

This equipment complies with ISEDC RSS-102 radiation exposure limits set forth for an uncontrolled environment.

Cet équipement est conforme aux limites d'exposition aux rayonnements ISEDC établies pour un environnement non contrôlé.