

ANC-817K7
Wireless Bluetooth Earbuds
User Guide

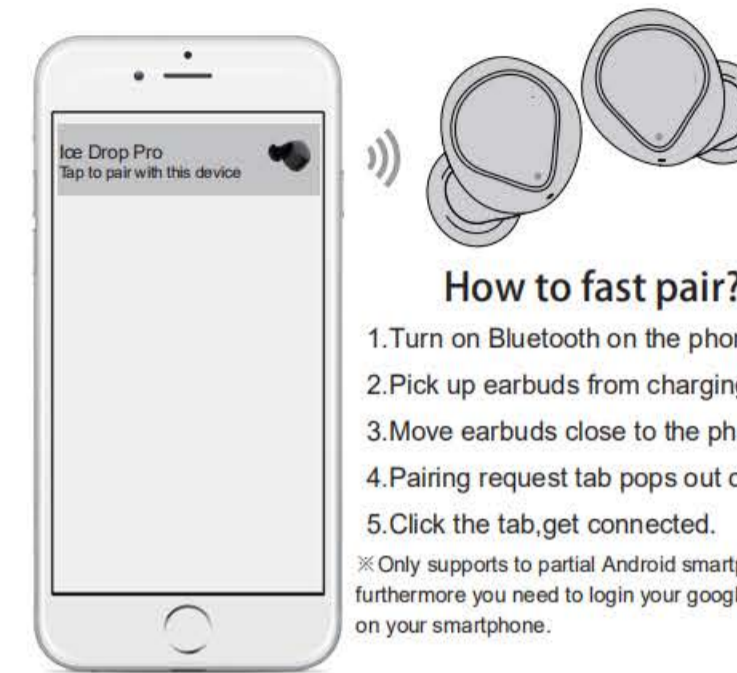
COUMI EQ

COUMI EQ app can customize sound curve for EACH user by testing your hearing and create sound curve accordingly, then save the sound curve into the earbuds. Once the sound curve has been saved, no matter what Bluetooth enabled player or what music you will choose, you can enjoy music by our earbuds with your own sound curve inside.

FREELY CUSTOMIZE MUSIC FOR YOUR EAR!



Google Fast Pairing



How to fast pair?

1. Turn on Bluetooth on the phone.
2. Pick up earbuds from charging case.
3. Move earbuds close to the phone.
4. Pairing request tab pops out on phone.
5. Click the tab, get connected.

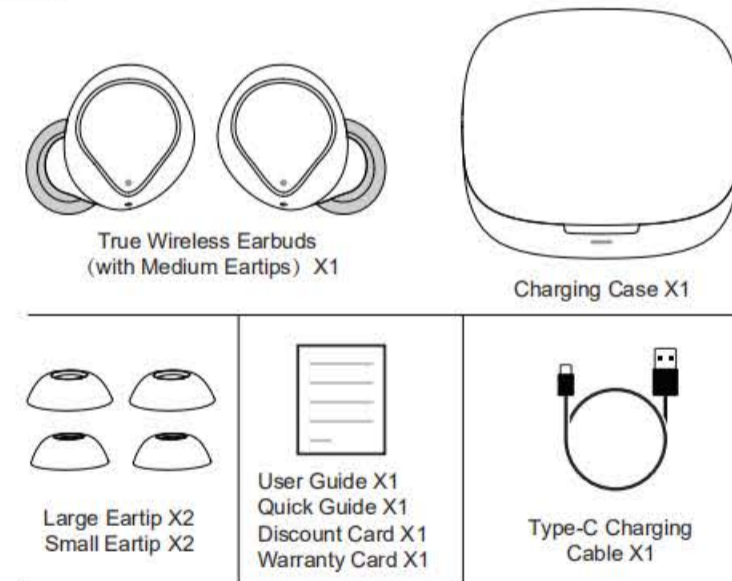
* Only supports to partial Android smartphones, furthermore you need to login your google account on your smartphone.



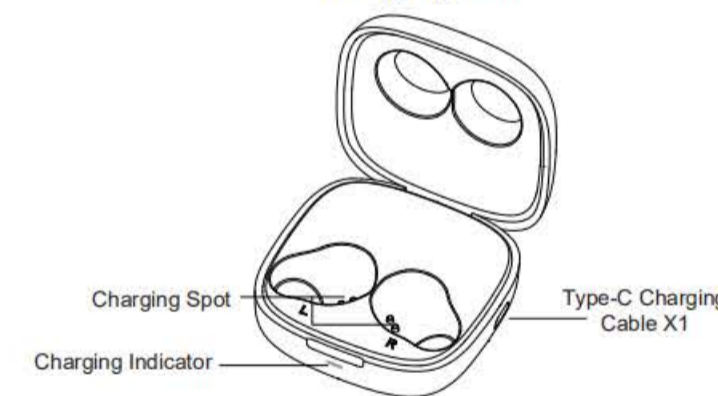
CONTENTS

English	01-07
Français	08-14
日本語	15-21
Español	22-28
Italiano	29-35
Deutsch	36-42

① Package Contents

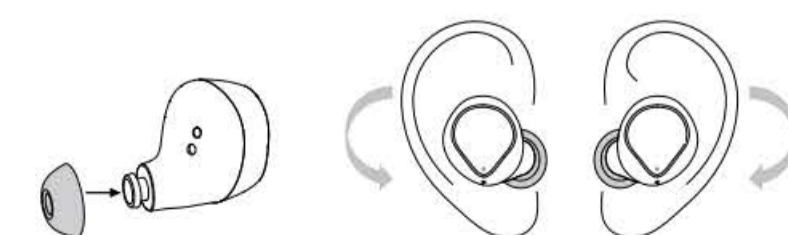


Charging Case



③ Wearing Guide

1. Select eartips of the most fitting size provided (large, medium, small).
2. Please install the fitting eartips on the earphone.
3. Pick up the earbuds accordingly (R/L), and rotate the earbuds according to the direction of the arrows for more stable fitting.



④ Instruction

1. Initial use
For the first charge, please remove the insulation film on charging port of the earbud.
2. Power On
Open the charging case, the earbuds will power on and you can hear prompt voice "Power On". White LED lights on 1s.
3. Pairing
Open the phone Bluetooth to search "Ice Drop Pro" and hear "Connected" and light goes out.



* Either earbud can be used separately.
* The earbuds can be automatically re-connected to the last connected devices.

⑤ Technical Specification

Item Number: TWS-817K7 Charging Parameter: Earbuds : 5V / 35mA
Bluetooth Version: 5.2 Charging case: 5V / 400mA
Bluetooth Profiles: HFP/HSP/A2DP/AVRCP Battery Type: Lithium ion battery
Wireless Range: 360° 10M Earbuds: 3.7V / 45mAh
Music Time: Up to 6 Hours Charging Case: 3.7V / 500mAh
Used with the Charging Case: Frequency Response: 20Hz-20KHz
Up to 24 Hours Sensitivity: 95±3dB
Charging Time: About 1.5 Hours
Battery Life:
Due to different systems, audio formats, personal usage habits (such as volume) of mobile phones and other devices, the battery life may vary for the specific situation.

⑥ Operation

Earbuds Operation Guide

Function	Left Ear	Right Ear	Voice Prompt
Power On	Open the charging case/ Press 3s when in power off		Power On
Play/Pause	/	Double Taps	/
Previous	Press 2s	/	/
Next	/	Press 2s	/
Volume+	/	Tap	/
Volume-	Tap	/	/
Answer	Double Taps	Double Taps	"Beep"
Hang Up	Double Taps	Double Taps	"Di"
Reject	Press 1~2s	Press 1~2s	"Beep"
Power Off	Put earbuds back and close the charging case/ Press 10s when in power on		Power Off
Voice assistant	Triple Taps	Triple Taps	"Di"

⑦ Light indicator

Charging case light indicator

Charging case status	LED indicator Status
Case on Charge	Led flashes
Case Fully Charged	Lights are always on

Earbuds Light Indicator

Earphone status	Earbuds light state
Power on	Light for 1s
Pairing Status	The white light of the dual earphones flashes quickly; the white light is off after successful connection with the mobile phone
Connected	Light goes out

The product name, trademark, model, MIC ID and LOGO can be found in the instruction manual and the packaging.

⑧ FAQ

1. The earbuds do not turn on.
Please confirm the earbuds have power left, if not charged please charge up and then power on.
2. Unsuccessful Bluetooth Pairing.
Make sure that the earbuds are turned on and in pairing state, the pairing distance is kept within 1m.
3. Some Bluetooth devices require a pairing password
Please enter "0000"
4. Automatically Re-connect
After Power on, it will automatically re-connect to the last connected device.
5. How long will it turn off automatically when it doesn't connect?
The earbuds will automatically turn off after 10mins if it doesn't connect with Bluetooth devices.
6. If the left and right earbud don't sync or connect the phone because the earbud is in re-connection mode or other mode, or if you can't find your preferred Bluetooth device, you can restore a factory reset:
Press and hold for 10 seconds in the shutdown state, the white light flashes 3 times quickly indicating that the clearing is successful.
7. When the earbuds cannot be charged, please wipe the earbuds metal charging spots.

Warning

Warning FCC ID : 2AG68-ANC-817K7
NOTE: This equipment has been tested and found to comply with the limits for a Class B digital device, pursuant to part 15 of the FCC Rules. These limits are designed to provide reasonable protection against harmful interference in a residential installation. This equipment generates uses and can radiate radio frequency energy and, if not installed and used in accordance with the instructions, may cause harmful interference to radio communications. However, there is no guarantee that interference will not occur in a particular installation. If this equipment does cause harmful interference to radio or television reception, which can be determined by turning the equipment off and on, the user is encouraged to try to correct the interference by one or more of the following measures:
- Reorient or relocate the receiving antenna.
- Increase the separation between the equipment and receiver.
- Connect the equipment into an outlet on a circuit different from that to which the receiver is connected.
- Consult the dealer or an experienced radio/TV technician for help
Changes or modifications not expressly approved by the party responsible for compliance could void the user's authority to operate the equipment. This device complies with Part 15 of the FCC Rules. Operation is subject to the following two conditions: (1) this device may not cause harmful interference, and (2) this device must accept any interference received, including interference that may cause undesired operation.