

Finder™

2019 – iOS User Manual



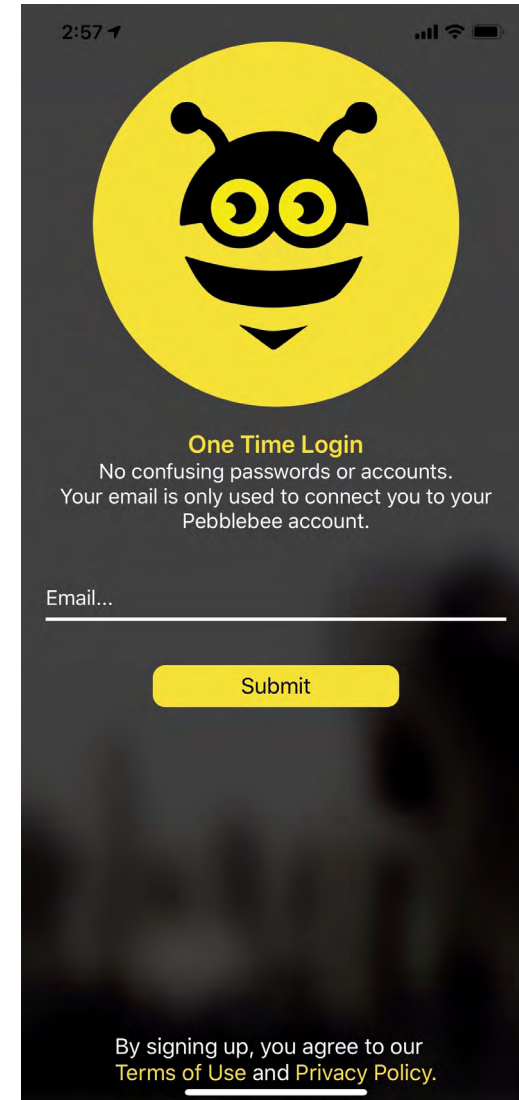
TABLE OF CONTENTS:

| | |
|----------------------------------|----|
| Download the App | 3 |
| Quick Tips | 4 |
| Setting up the App | 7 |
| Claiming your Finder | 8 |
| Using the Finder | 9 |
| Finder Settings | 10 |
| Voice Assistants | 11 |
| Crowd GPS & Left Behind Features | 12 |
| Re-enabling Permissions | 13 |
| Battery Replacement | 14 |
| Battery Caution | 16 |
| Battery Safety | 17 |
| FCC Caution | 18 |
| Declaration of Conformity | 19 |
| NCC Caution | 20 |

Download the App

The Pebblebee Finder app can be downloaded by searching for the Pebblebee Finder app in the App Store or by visiting pebblebee.com/download.

- 1 Please make sure your mobile device has Bluetooth ON.
- 2 Once downloaded, please allow all permissions for full operation. See Quick Tips on following steps for more information.



Quick Tips

1

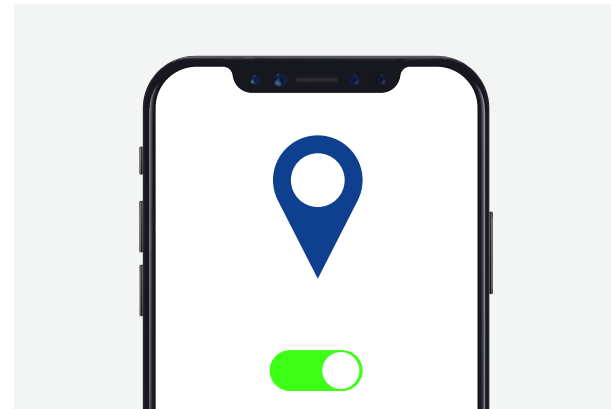
KEEP BLUETOOTH® ON

The Finder communicates with your phone via your Bluetooth® connection. Keep Bluetooth® ON so that your Pebblebee and phone are always connected.

**2**

LOCATION SERVICES ON

Always keep track of your devices by enabling and keeping Location Services ON. Make sure to 'Always Allow', this will allow you to locate and see the device's last known location on a map.



Quick Tips

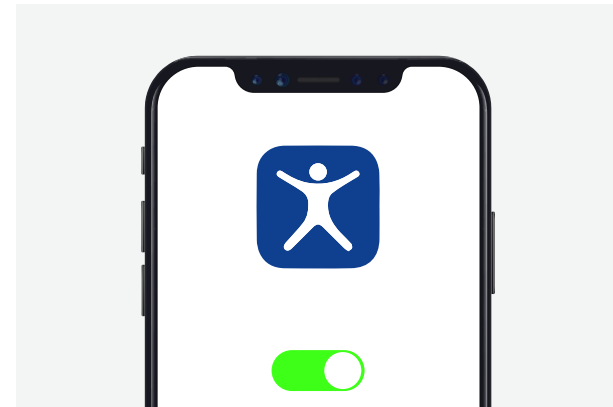
3 BLUETOOTH® SHARING ON

Enable Bluetooth® Sharing so that your device is always communicating with your phone even while you're not using the App. This will allow the Pebblebee® App to register last known location of your device.



4 MOTION & FITNESS ON

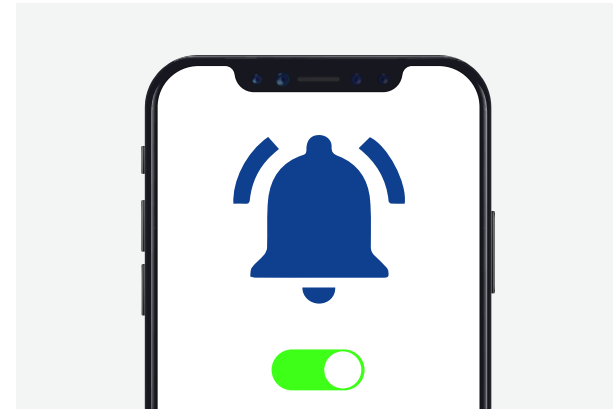
Allow access to your Motion & Fitness Activity for 'Left Behind Alerts' functionality to work efficiently.



Quick Tips

5 NOTIFICATIONS ON

Allow notifications including alerts and sounds to be sent to your phone. This allows voice activated functionality and CrowdGPS® lost notifications.



6 REMEMBER ...

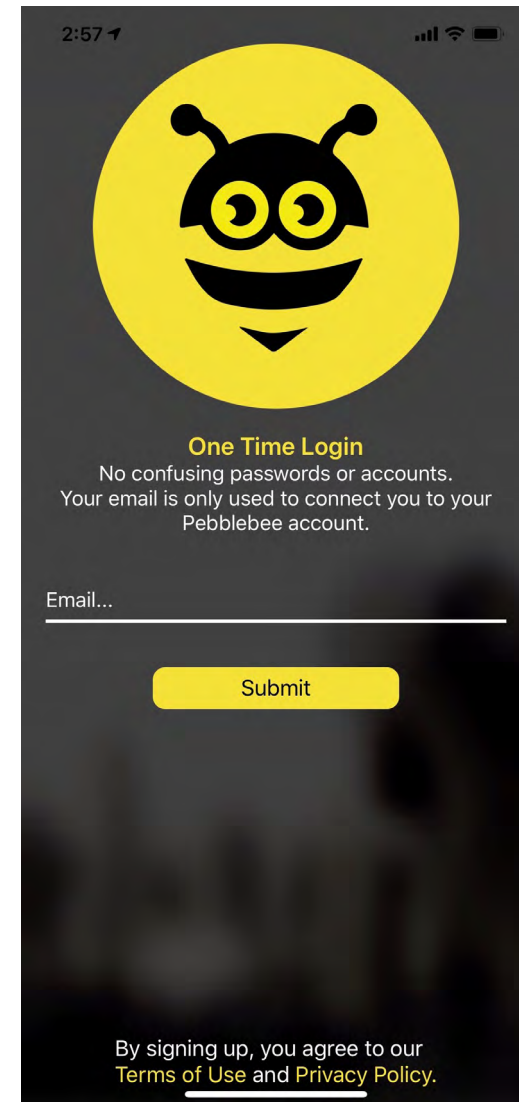
The Pebblebee® device can also help you find your phone by quickly and briefly pressing your device button once, even if your phone is on Silent.



Setting up the App

The Pebblebee Finder app can be downloaded by searching for the Pebblebee Finder app in the App Store or by visiting pebblebee.com/download.

- 1 Open the Pebblebee® App
- 2 Enter email and tap 'submit' button
- 3 Open your email and retrieve your activation code.
- 4 Enter your zip code in the app and tap Submit Code

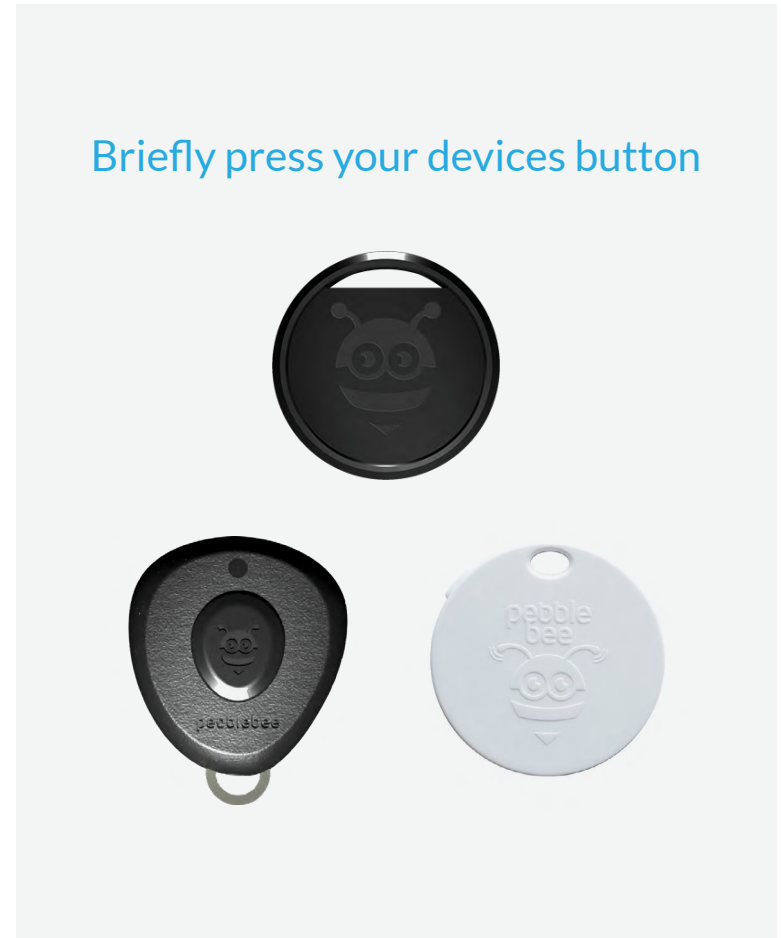


Claim the Finder®

Now that you have an account, you can claim your brand new Finder®!

- 1 Tap the bee icon on top to show a list of all claimed devices and the claiming button.
- 2 Tap on Add Device to access the claiming screen.
- 3 Briefly press your Finder's button (the center front of the device)
- 4 The app will prompt you to name your device, then will add it to your account. The name can be changed later.

Briefly press your devices button

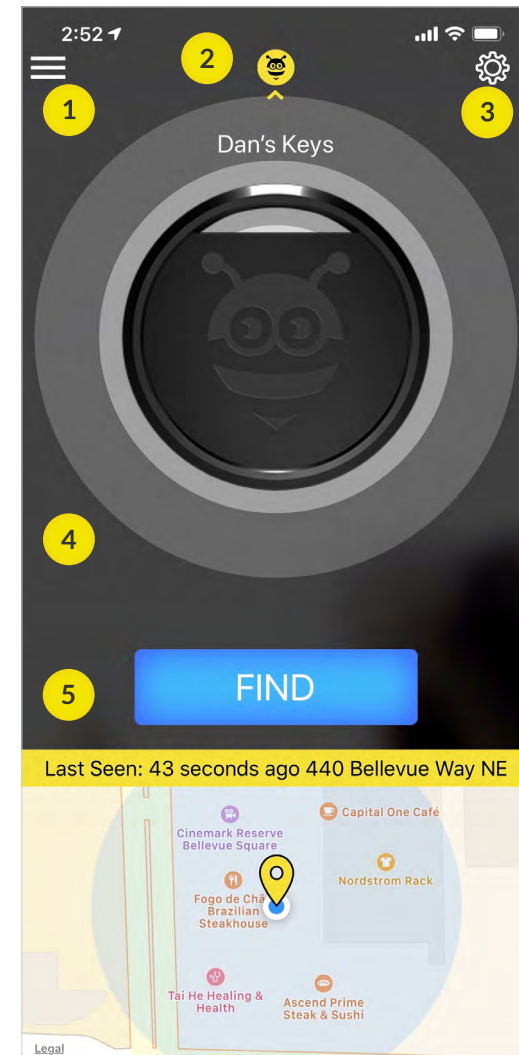


*If you see a message that the Finder has already been claimed, double check that it has not already been claimed to an account using a different email.

Using the Finder®

From this screen, you can do just about anything

- 1 Menu** - Tap here to see overall account information.
- 2 Device List** - Tap here to see all claimed devices and navigate between devices. New devices can also be claimed here.
- 3 Settings** - Tap here to view settings for the currently selected device.
- 4 Find** - Tap on FIND to Beep and Flash your Finder when it's within range of your phone. While beeping, the Finder's alarm can be stopped by pressing the Finder's button.
- 5 Map** - The map will show the last known location of the Finder, which is the last time it was within range of the app. Tap on the map to expand it.



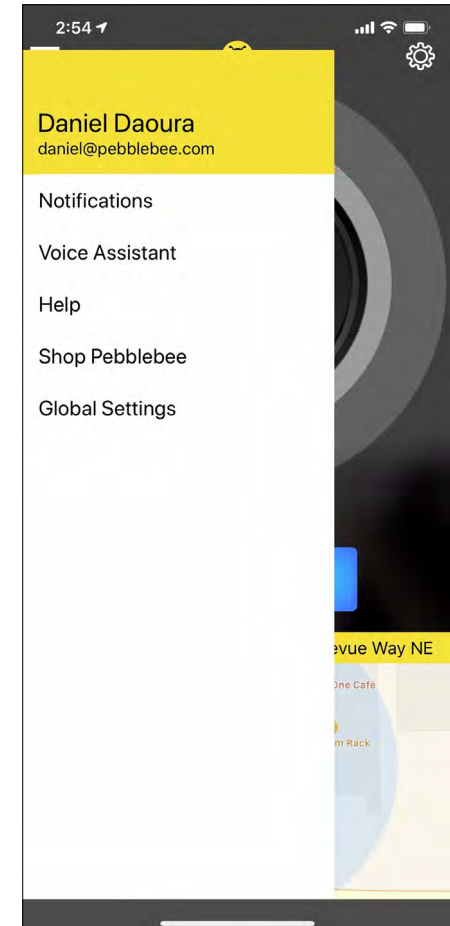
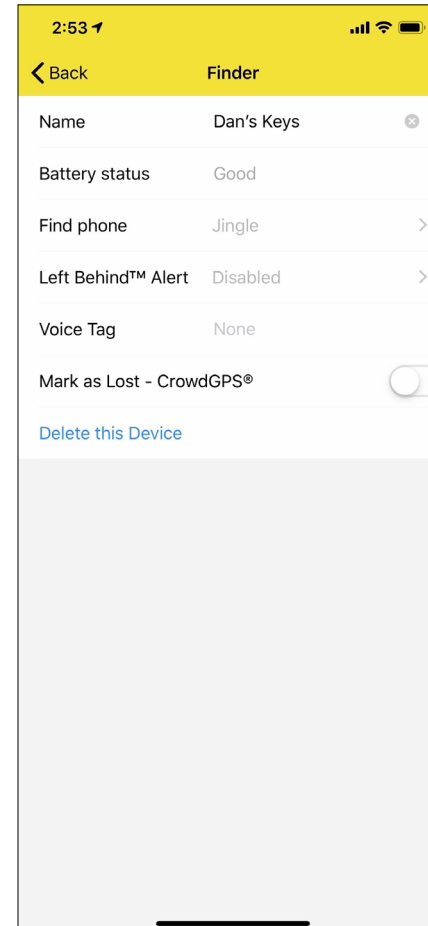
Finder® Settings

Finder® Details:

- Change the name of your Finder®
- Check the battery status of the Finder®
- Change the tone that's used for the Find Phone feature or turn it off entirely
- Enable the Left Behind Alert
- Set the keyword used to find the device with voice assistants (Google Assistant or Amazon Alexa)
- Mark device as Lost
- Delete your Finder® from the account. Deleting it removes all settings.

Profile:

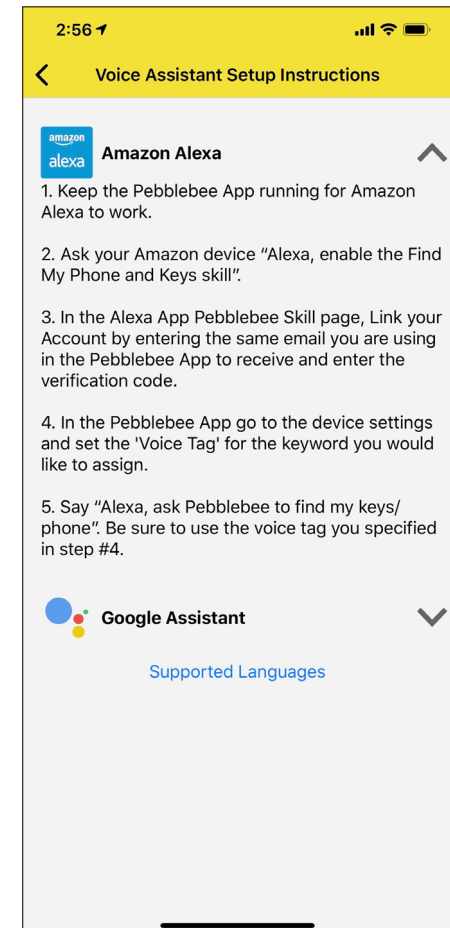
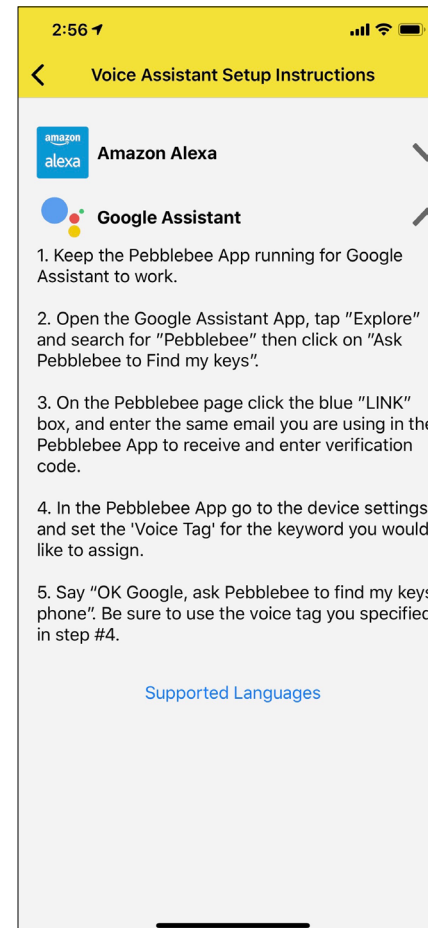
- See a list of previous notifications
- Access the website for device Help



Voice Assistants

The Pebblebee app now offers Amazon Alexa and Google Assistant integrations. That way if you can't find your phone and Finder, you can ask Alexa or Google to find them for you through voice commands.

To set up, go to the Account settings page in the app. Then, follow the directions to get started.



CrowdGPS® & Left Behind Features

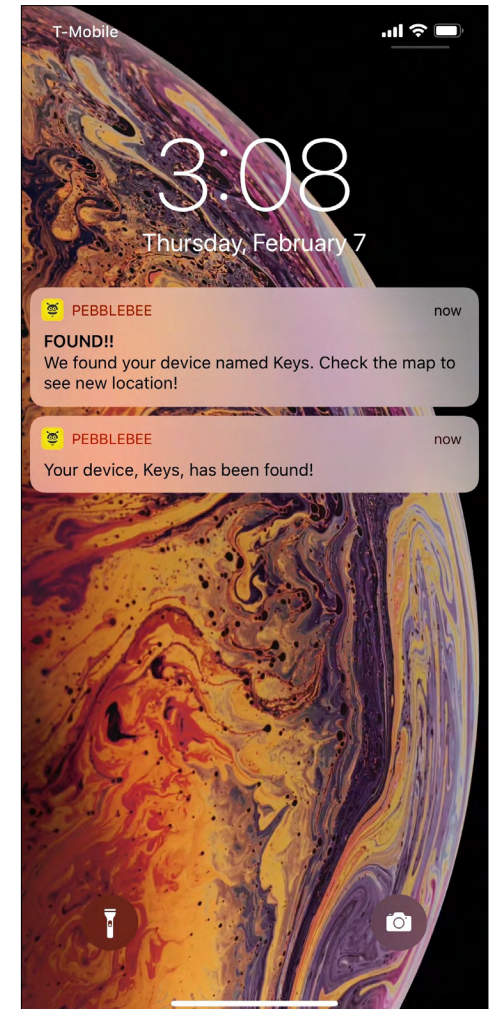
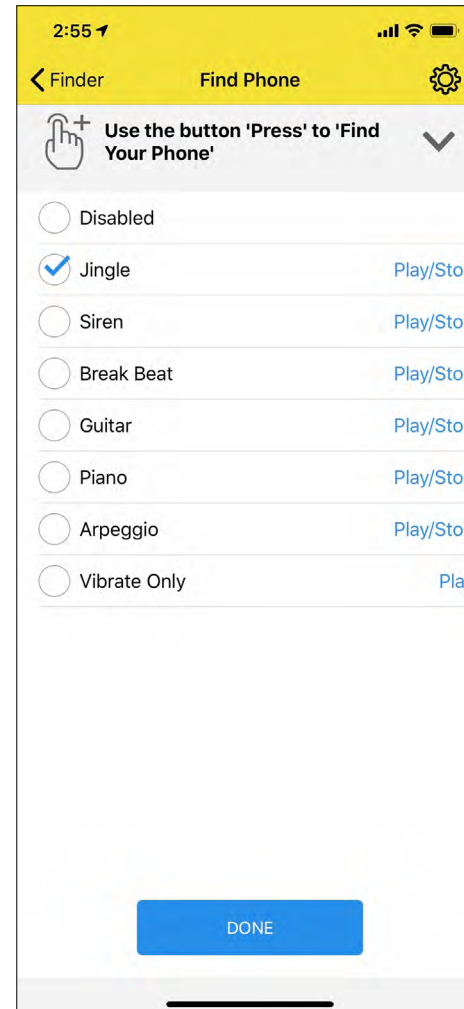
CrowdGPS®

If your device is out of range and can't be found, mark it as Lost. When it comes within range of any Pebblebee app user, you'll get a notification alerting you to its new location.

Once found, be sure to turn off the Lost button, or you'll continue to get "Found" notifications for updated locations.

LEFT BEHIND

When the Left Behind alert is enabled, you'll receive an alert when the phone notices that your Finder has been out of range for too long (~10 minutes).



Re-Enabling Permissions

If you've disabled some permissions, here's how you can re-enable them:

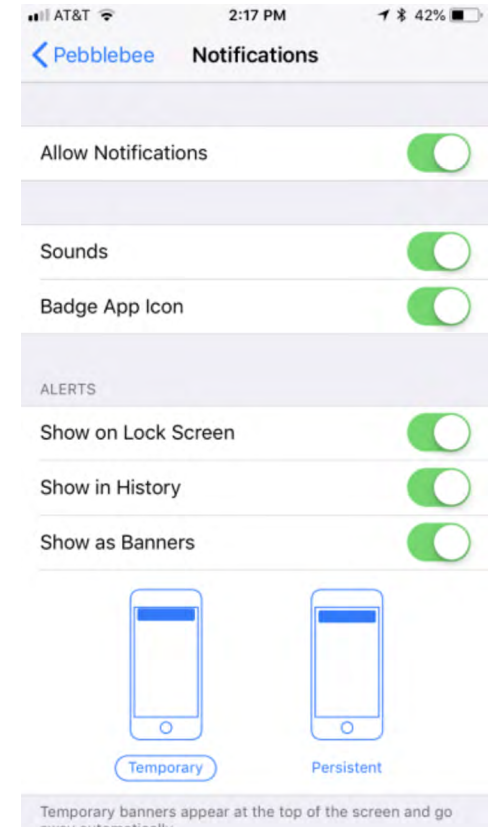
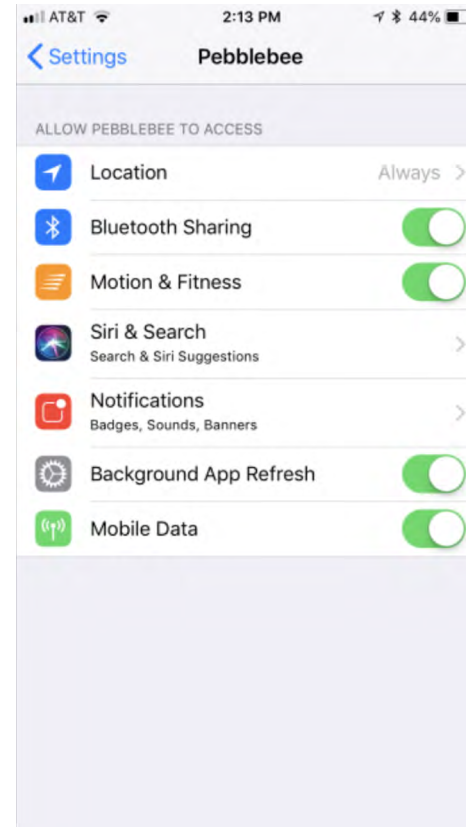


Go to your phone's Settings.



Scroll down the list and tap on Pebblebee.

Make sure that you have enabled all settings as following screens.



Battery Replacement

The Finder has a battery life of up to 1 year. When the time finally comes to replace your Finder's battery, here are tips to help:

The Finder uses a CR2032 battery.

To replace the battery:

- 1 Get a small flathead screwdriver or similar tool
- 2 Find the small notch on the Finder. It's on the top of the plastic on the bee logo side, in the key ring hole.
- 3 Use the screwdriver as a lever to carefully pry the top (the side with the logo) off toward you. The inner parts will come out as well.
- 4 Carefully remove and replace the battery
- 5 Snap the pieces back together. Make sure it's fully snapped together

Disclaimers

The Following slides are Disclaimers and safety information



Battery Caution

Remove batteries if consumed or if product is to be left unused for a long time

- 1 **WARNING** - KEEP BATTERIES OUT OF REACH OF CHILDREN
- 2 Swallowing may lead to serious injury in as little as 2 hours or death, due to chemical burns and potential perforation of the esophagus.
- 3 If you suspect your child has swallowed or inserted a button battery, immediately seek urgent medical assistance.
- 4 Examine devices and make sure the battery compartment is correctly secured, e.g. that the screw or other mechanical fastener is tightened. Do not use if compartment is not secure.
- 5 Dispose of used button batteries immediately and safely. Flat batteries can still be dangerous.
- 6 Tell others about the risk associated with button batteries and how to keep their children safe.

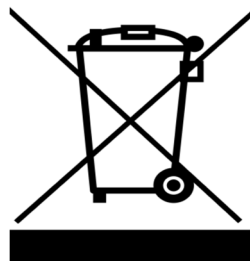
Battery Replacement

This product contains lithium, organic solvent, and other combustible materials. For this reason, improper handling of the battery could lead to distortion, leakage (Leakage is defined as an unintended escape of liquid from a battery), overheating, explosion, or fire and cause human injury or equipment trouble. Please strictly observe the following safety instructions:

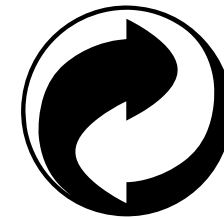
Never swallow. Never charge. Never heat. Never expose to open flame. Never disassemble. Never reverse the positive and negative terminals when mounting. Never short-circuit the battery. Never weld the terminal or wire to the body of the battery directly. Never use different batteries together. Never touch the liquid leaked out of battery. Never bring fire close to battery. Never keep in touch with battery. Please do not dispose the battery in municipal waste. The battery may be regulated by national or local regulation. Please follow the instructions of proper regulation to recycle or dispose. As electric capacity is left in a discarded battery and it comes into contact with other metals, it could lead to distortion, leakage, overheating, or explosion. Make sure to cover the (+) and (-) terminals with friction tape or some other insulator before disposal.



Please do not dispose battery in household waste



Please do not dispose product in household waste



Please recycle product and packaging appropriately

FCC Caution

This device complies with part 15 of the FCC Rules. Operation is subject to the following two conditions: (1) This device may not cause harmful interference, and (2) this device must accept any interference received, including interference that may cause undesired operation.

Any Changes or modifications not expressly approved by the party responsible for compliance could void the user's authority to operate the equipment.

Note: This equipment has been tested and found to comply with the limits for a Class B digital device, pursuant to part 15 of the FCC Rules. These limits are designed to provide reasonable protection against harmful interference in a residential installation. This equipment generates uses and can radiate radio frequency energy and, if not installed and used in accordance with the instructions, may cause harmful interference to radio communications. However, there is no guarantee that interference will not occur in a particular installation. If this equipment does cause harmful interference to radio or television reception, which can be determined by turning the equipment off and on, the user is encouraged to try to correct the interference by one or more of the following measures:

- Reorient or relocate the receiving antenna.
- Increase the separation between the equipment and receiver.
- Connect the equipment into an outlet on a circuit different from that to which the receiver is connected.
- Consult the dealer or an experienced radio/TV technician for help.

Declaration of Conformity

P.O. Box 2962, Bellevue, WA 98056

October 29th, 2018

DECLARATION OF CONFORMITY
(in accordance with ISO/IEC 17050-1)

Manufacturer's Name: PB INC
Manufacturer's Address: P.O. Box 2962 Renton, WA 98056

Equipment: Pebblebee Wireless Tracker
Product Name: Pebblebee Finder
Model Number: PB-501 (Also known by SKU PB-501-G, PB-501-B, PB-501-S, PB-502-SG)
Brand: Pebblebee

The undersigned hereby declares, on behalf of PB INC, Bellevue, Washington, USA, that the above-referenced product, to which this declaration relates, is in conformity with the provisions of:

RED 2014/53/EU (Radio Equipment Directive)
EN 60950-1:2006+A11:2009+A1:2010+A12:2011+A2:2013
EN 50663:2017
Draft ETSI EN 301 489-1 V2.2.0 Draft ETSI EN 301 489-17 V3.2.0
ETSI EN 300 328 V2.1.1

RoHS Directive 2011/65/EU (Restricted Substance Requirements)
IEC 62321-3-1:2013
IEC 62321-4:2013
IEC 62321-5:2013
IEC 62321-6:2015
IEC 62321-7-1:2015
IEC 62321-7-2:2017
IEC 62321-8:2017

Per Article 2
Frequency RF Power (EIRP)
2402-2480 MHz -21dBm EIRP

Signed:



Name: Daniel Daoura

Place of Issue: Bellevue, WA (USA)

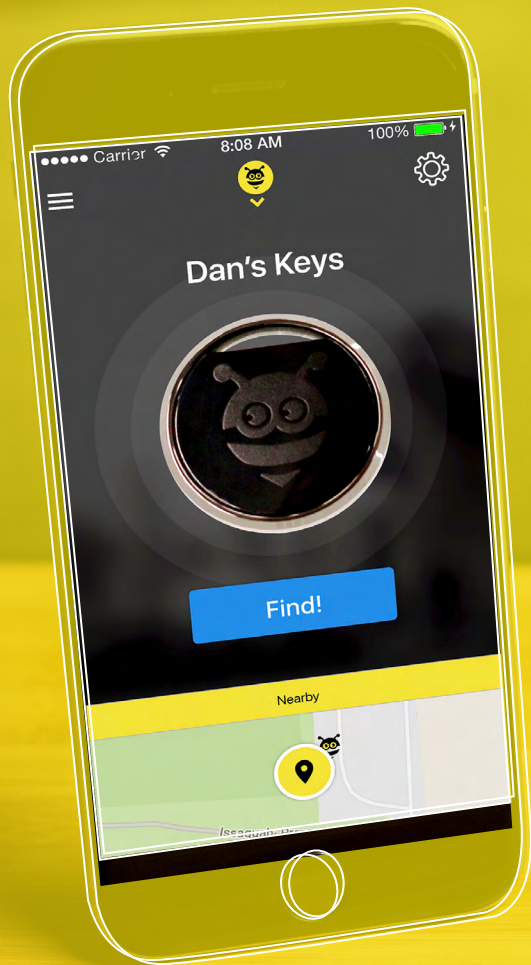
© 2018 PB INC - CONFIDENTIAL

FCC Caution

根據 NCC 低功率電波輻射性電機管理辦法規定：

第十二條 經型式認證合格之低功率射頻電機，非經許可，公司、商號或使用者均不得擅自變更頻率、加大功率或變更原設計之特性及功能。

第十四條 低功率射頻電機之使用不得影響飛航安全及干擾合法通信；經發現有干擾現象時，應立即停用，並改善至無干擾時方得繼續使用。前項合法通信，指依電信法規定作業之無線電通信。低功率射頻電機須忍受合法通信或工業、科學及醫療用電波輻射性電機設備之干擾。



THANK YOU



FinderTM

