

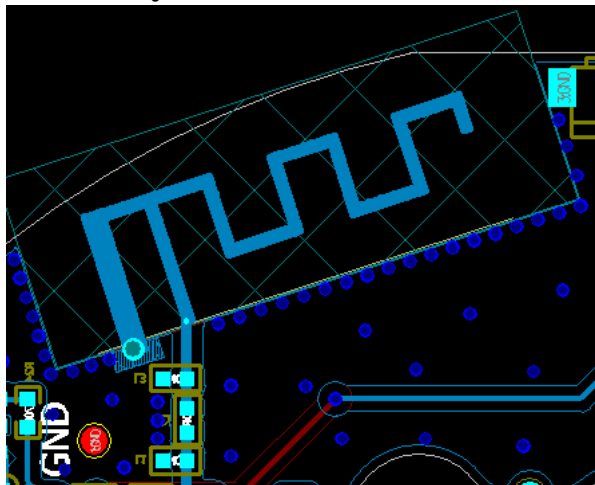
Product specification

Quick Reference Date

Manufacturer	Shenzhen Xinglong new plastic products limited company
Frequency	2.45GHz*1
Ant. Port Input Pwr. (dBm)	0 (Typ. BT class 2 output power)
Tot. Rad. Pwr. (dBm)	-2.3 (Input pwr – loss pwr)
Peak EIRP(dBm)	1.3
Directivity (dBi)	1 (all direction antenna)
Efficiency (dB)	-2.3 (58.5%)
Gain (dBi)	1.3 (Peak Gain XY-plane)
Maximum Power (dBm)	1.3 (XY-plane)
Minimum Power (dBm)	-4(XY-plane)
Avg. Power (dBm)	-0.5(XY-plane)
Max/Min Ratio (dB)	5.3(XY-plane)
Max/Avg Ratio (dB)	1.8(XY-plane)
Min/Avg Ratio (dB)	-3.5(XY-plane)
Average Gain (dB)	-0.5 (Avg Gain XY-plane)

All the technical data and information contained herein are subject to change without prior notice

Antenna Layout & module on the system board



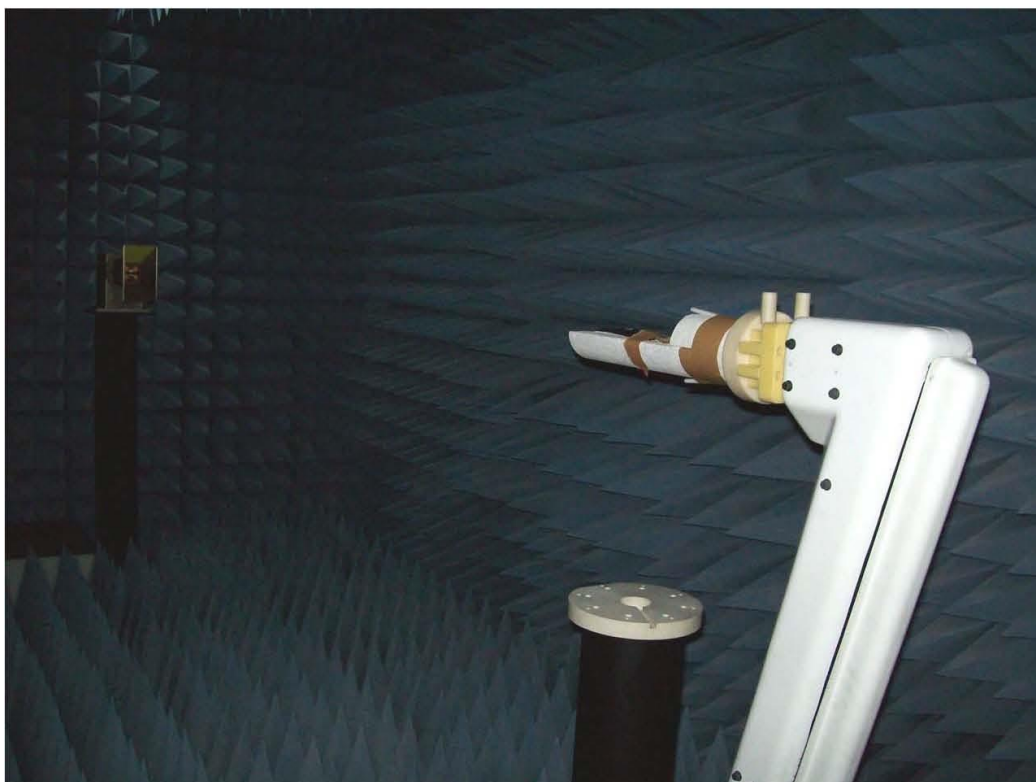
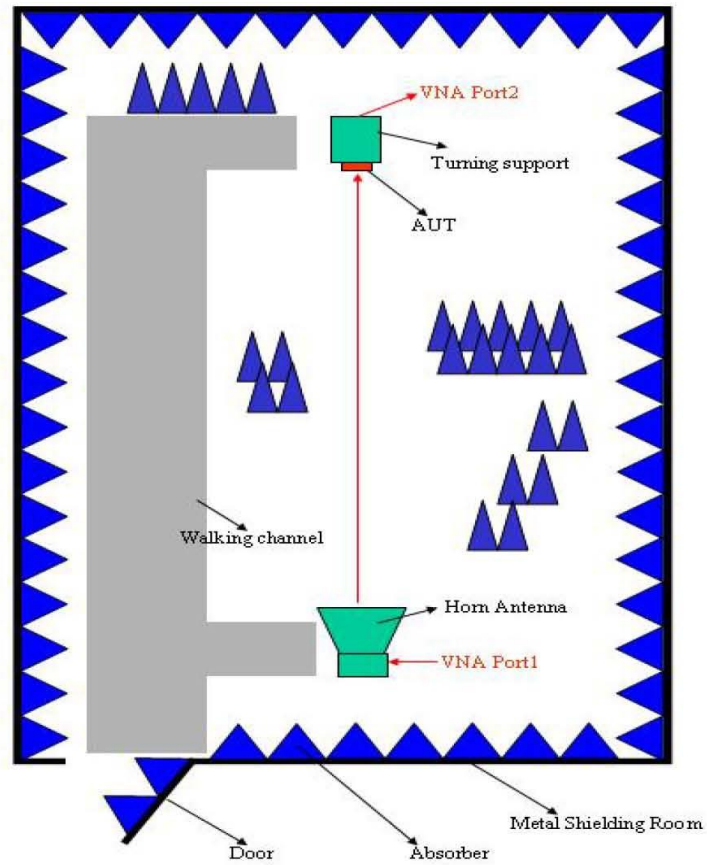
Antenna Gain Gain Table

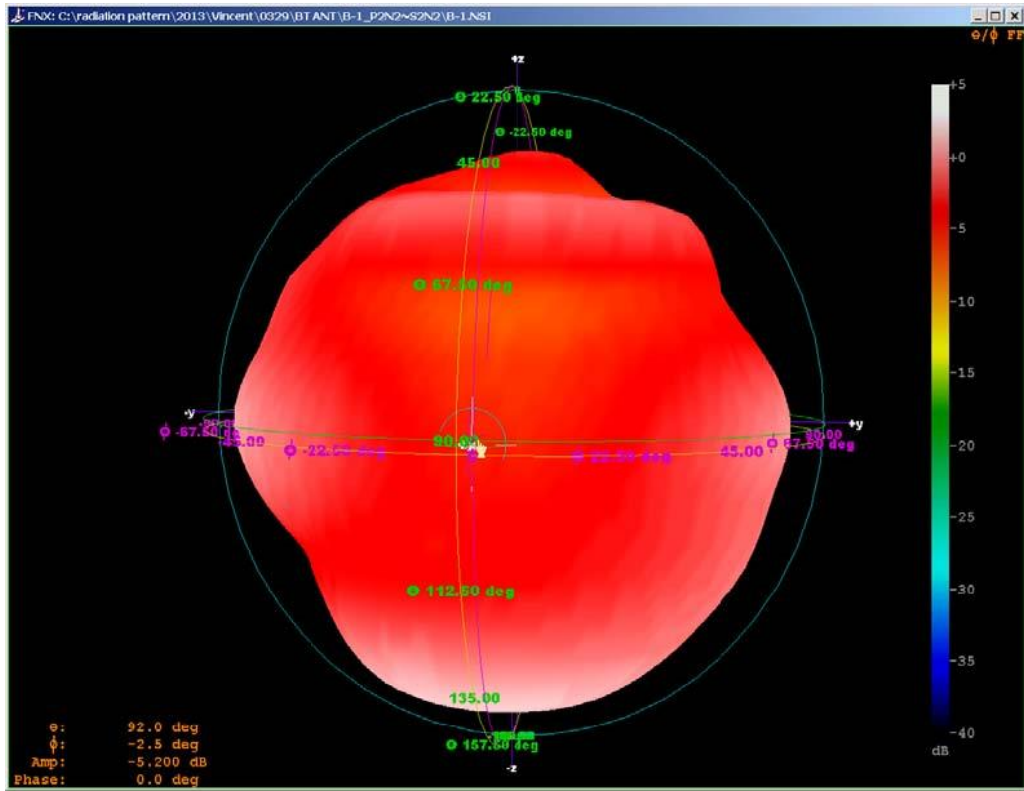
Unit in dBi @2.44GHz	XY-plane		XZ-plane		YZ-plane		Efficiency
	Peak	Avg.	Peak	Avg.	Peak	Avg.	
Module Board	0.9	-1.9	1.3	-2.2	0.4	-3.8	47.2%



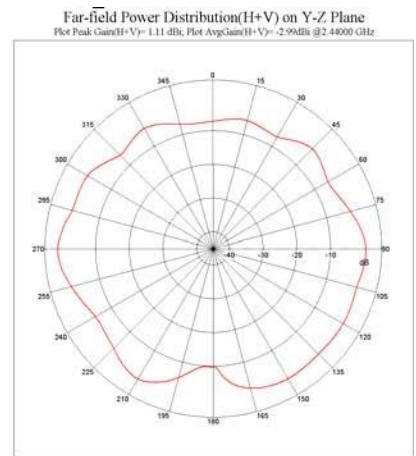
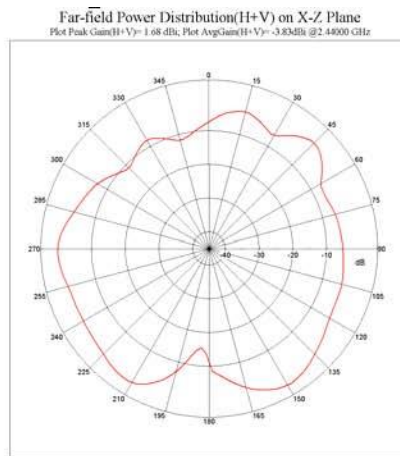
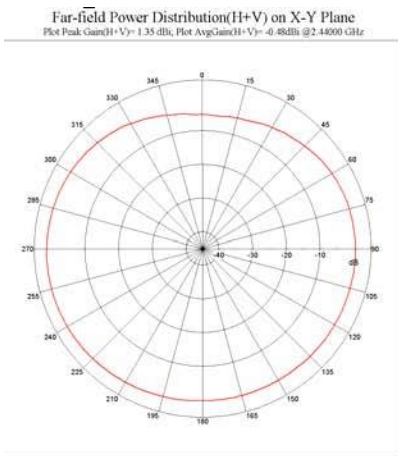
Return Loss

The Environment of Antenna Radiation Pattern





3D radiation pattern diagram



XY-plane XZ-plane YZ-plane