

205.5mm

43mm

Audio

- Speaker Unit: 2W
- Output Power: 1.8W
- S/N Ratio: S/N $\geq 90 \pm 3$ DB
- Rated Impedance: 4 Ω
- Distortion: THD $\leq 10\%$

Power

- Rechargeable 280mA lithium battery
- Voltage Input: 5V~450mA
- Playtime: 1-2H

Port

- Power Input: 5PIN MICRO USB
- Charging Time: 1-1.5H

NOTE: This equipment has been tested and found to comply with the limits for a Class B digital device, pursuant to part 15 of the FCC Rules. These limits are designed to provide reasonable protection against harmful interference in a residential installation. This equipment generates uses and can radiate radio frequency energy and, if not installed and used in accordance with the instructions, may cause harmful interference to radio communications. However, there is no guarantee that interference will not occur in a particular installation. If this equipment does cause harmful interference to radio or television reception, which can be determined by turning the equipment off and on, the user is encouraged to try to correct the interference by one or more of the following measures:

- Reorient or relocate the receiving antenna.
- Increase the separation between the equipment and receiver.
- Connect the equipment into an outlet on a circuit different from that to which the receiver is connected.
- Consult the dealer or an experienced radio/TV technician for help.

Changes or modifications not expressly approved by the party responsible for compliance could void the user's authority to operate the equipment. This device complies with Part 15 of the FCC Rules. Operation is subject to the following two conditions:

- (1) this device may not cause harmful interference, and
- (2) this device must accept any interference received, including interference that may cause undesired operation.

FCC ID: 2AG5APICO



PICO
USER MANUAL



V10.11.15 ENG

5. Legal

Manufacturer shall not in any way be liable to you or to any third party for any damages you or any third party may suffer as a result of use, intended or unintended, or misuse of this wireless speaker in conjunction with any device or accessory other than the appropriate mobile device for which this wireless speaker is designed.

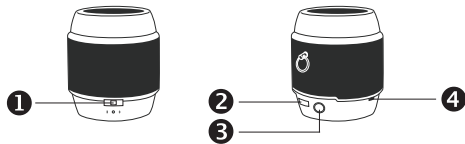
Manufacturer will not be responsible for any damages you or any third party may suffer as a result of misuse of this wireless speaker as outlined above. If you are responsible for wireless speaker use with an unintended mobile device and damages result from such use, you agree to indemnify Manufacturer for any resulting injuries to any third parties.

材质：128G铜版纸, 双面印刷

205.5mm

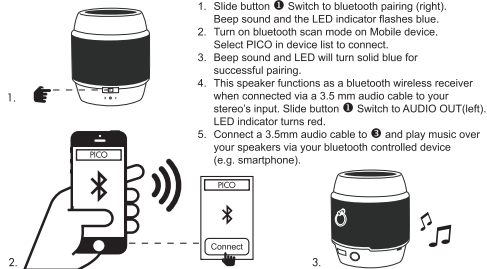
43mm

1. Buttons & Connections



- ❶ Audio out /OFF/ Bluetooth pairing button
- ❷ Female micro-USB power input
- ❸ Female 3.5 mm audio output (bluetooth wireless receiver function)
- ❹ 2 LED indicator (red/blue)

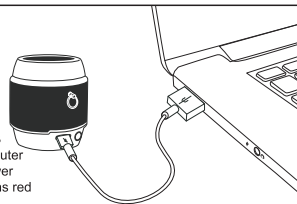
2. Connect to music player



1. Slide button ❶ Switch to bluetooth pairing (right). Beep sound and the LED indicator flashes blue.
2. Turn on bluetooth scan mode on Mobile device. Select PICO in device list to connect.
3. Beep sound and LED will turn solid blue for successful pairing.
4. This speaker functions as a bluetooth wireless receiver when connected via a 3.5 mm audio cable to your stereo's input. Slide button ❶ Switch to AUDIO OUT(left). LED indicator turns red.
5. Connect a 3.5mm audio cable to ❸ and play music over your speakers via your bluetooth controlled device (e.g. smartphone).

3. Charging the PICO

To charge PICO, use the USB cable to connect ❷ to a computer or any device with a USB power output port. LED indicator turns red when charging.



4. Specifications

- Bluetooth
- Bluetooth V2.1
 - Frequency Range: 2.402GHz-2.480GHz
 - Communication Range: More than 10M in a linear direction without obstacles

材质：128G铜版纸, 双面印刷