

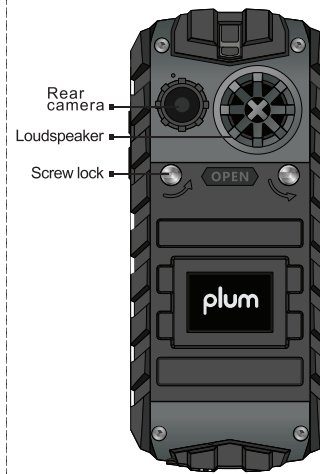
QUICK START GUIDE

RAM 3G



plum

Keypad Description



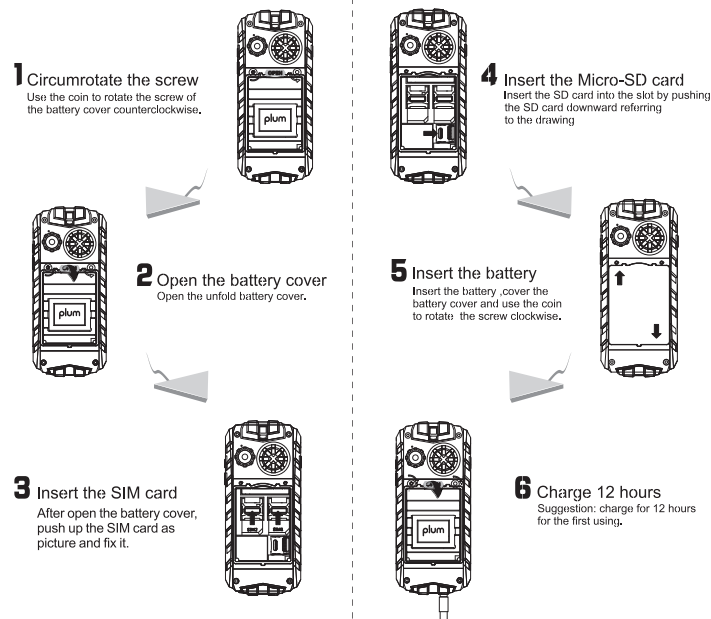
Please visit our website for user manual.
www.plum-mobile.com

Plum Rugged Device Quick Start Guide

1. Only use approved PLUM chargers, cables & accessories.
2. Ensure the USB Port Cover Flap is correctly sealed to protect from water & moisture.
3. Ensure that the rubber seal inside the battery door is placed correctly. Improper use can cause damage to the device.
4. IP-67/68 Certified devices are water proof in depths of 1 meter or less and can be submerged for up to 20 minute.
5. Rinse the device with fresh water after submersion in salt water, dirt, dust, etc.
6. Rugged devices are designed to withstand falls from up to 1 meter in height.

Plum Mobile & authorized service centers are responsible for determining warranty status, misuse or abuse.

Quick Power On



ENGLISH	
INTERNET CONNECTION PLUM "Ram 3G A104"	
To connect to the internet, follow these steps:	
Menu	
Settings	
	Connectivity
	Data accounts
	SIM1 Network account or SIM2 Network account
	Option
	Edit
1	Account name
2	APN
3	User name
4	Password
5	Auth type
6	Advanced settings
	Homepage
	Connection type
	Use proxy
	Proxy address
	Proxy port
	Proxy user name
	Proxy password
Please contact your network operator to receive information: APN, Homepage, Proxy address/port, user name and password.	

ESPAÑOL	
CONECCION PLUM "Ram 3G A104"	
Para conectarse a internet, siga los siguientes pasos:	
Menú	
Configuración	
	Conectividad
	Cuentas de datos
	Cuenta de red SIM1 o cuenta de red SIM2
	Opcion
	Editar
1	Nombre de cuenta
2	APN
3	Punto de acceso
4	Contraseña
5	Tipo autorizacion
6	Configuración avanzada
	Página principal
	Tipo de coneccion
	Usa Proxy
	Dirección Proxy
	Puerto Proxy
	Nombre de usuario de Proxy
	Contraseña Proxy
Por favor, comuníquese con su operador de Red para obtener esta información: APN, página principal, dirección proxy / puerto, nombre del usuario y contraseña.	



www.plum-mobile.com

Warning:

Any Changes or modifications not expressly approved by the party responsible for compliance could void the user's authority to operate the equipment.

This device complies with part 15 of the FCC Rules. Operation is subject to the following two conditions: (1) This device may not cause harmful interference, and (2) this device must accept any interference received, including interference that may cause undesired operation.

Note: This equipment has been tested and found to comply with the limits for a Class B digital device, pursuant to part 15 of the FCC Rules. These limits are designed to provide reasonable protection against harmful interference in a residential installation. This equipment generates, uses and can radiate radio frequency energy and, if not installed and used in accordance with the instructions, may cause harmful interference to radio communications. However, there is no guarantee that interference will not occur in a particular installation. If this equipment does cause harmful interference to radio or television reception, which can be determined by turning the equipment off and on, the user is encouraged to try to correct the interference by one or more of the following measures:

—Reorient or relocate the receiving antenna.

—Increase the separation between the equipment and receiver.

—Connect the equipment into an outlet on a circuit different from that to which the receiver is connected.

—Consult the dealer or an experienced radio/TV technician for help.

SAR tests are conducted using standard operating positions accepted by the FCC with the phone transmitting at its highest certified power level in all tested frequency bands, although the SAR is determined at the highest certified power level, the actual SAR level of the phone while operating can be well below the maximum value, in general, the closer you are to a wireless base station antenna, the lower the power output.

Before a new model phone is available for sale to the public, it must be tested and certified to the FCC that it does not exceed the exposure limit established by the FCC, Tests for each phone are performed in positions and locations (e.g. at the ear and worn on the body) as required by the FCC.

For body worn operation, this model phone has been tested and meets the FCC RF exposure guidelines when used with an accessory designated for this product or when used with an accessory that

Contains no metal, and that positions the handset a minimum of 10mm from the body. Non-compliance

This equipment complies with FCC radiation exposure limits set forth for an uncontrolled environment .

This transmitter must not be co-located or operating in conjunction with any other antenna or transmitter.

Non-compliance with the above restrictions may result in violation of RF exposure guidelines.