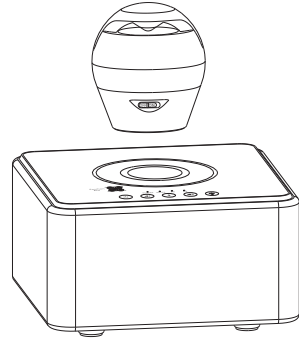




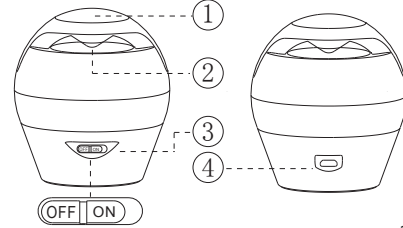
Shenzhen Skylary Audio Industry Co.,Ltd.

## Levitating Speaker User Manual Model: F1



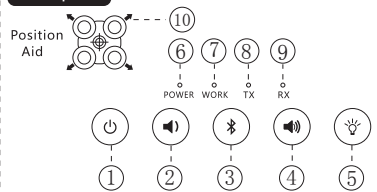
- Note:** 1. The touch buttons on subwoofer are available only under ball is turned on and levitated on subwoofer.  
2. F1 will be turned off after 2 seconds delay automatically when you take away the levitating ball as it work normally. In another word, the ball speaker can not work independently.

### Ball description



1. Top colorful decorative LED
2. Work status LED  
**Blue light:** flashing means Bluetooth pairing mode, light stably means Bluetooth connected  
**Green flashing:** Low battery, please charging  
**Red light:** it works while battery is charging, turned off while battery is filled
3. Power switch
4. Micro USB: charging in socket

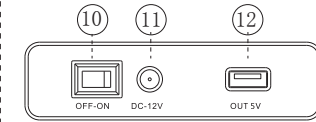
### Front panel



1. Long press: Turn on or off
2. Volume reduce.
3. Long press: Entering into Bluetooth pairing status
4. Volume increase

5. To change work mode of ball top LED lights, LED mode is cycle of breathing mode>> music mode>>turn off
6. **POWER :** Red, to indicate the status of turn on or off
7. **WORK :** Green, to indicate the speaker work normally
8. **TX :** Blue, to indicate the commands is transmitted from subwoofer to ball.
9. **RX :** Blue, to indicate the commands is received from ball to subwoofer
10. **Position Aid :** Assisted positioning LEDs

### Back panel

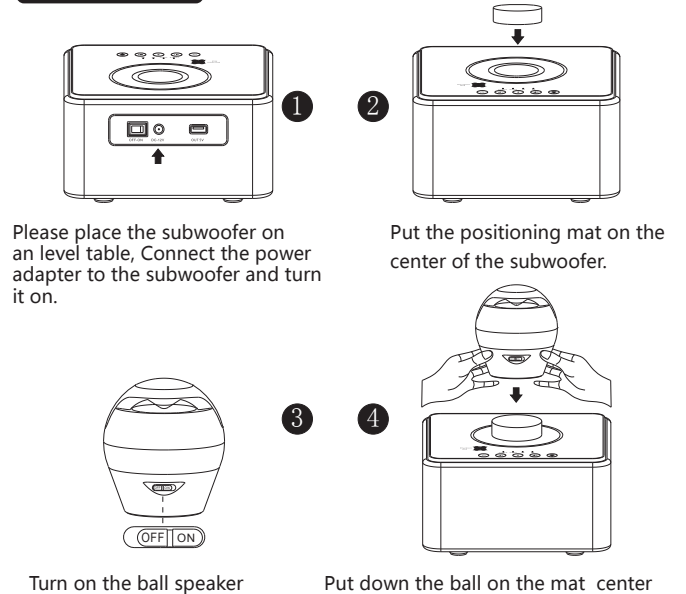


10. OFF-ON Power switch.
11. DC-12V Power input socket.
12. OUT 5V USB charging out for ball speaker or other devices.

### Technical Parameter

Levitate heigh : About15mm  
Power adapter : DC 12V/2.5A  
Bluetooth version : V4.0  
SNR : >80 dB  
Frequency response : 60HZ-20KHZ  
Ball Li battery:1200mAh  
Work time : 5 to 8 hours  
Ball size : D 77 \* H 86 mm  
Subwoofer size : L 174\*W 174\*H100mm  
Inner carton : L223\*W223\*H234mm  
G.W : About 2.3kg

### How to operate

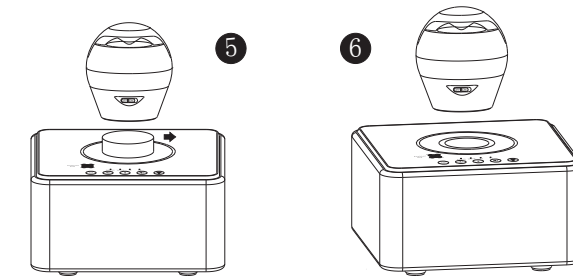


Please place the subwoofer on an level table, Connect the power adapter to the subwoofer and turn it on.

Turn on the ball speaker

Put the positioning mat on the center of the subwoofer.

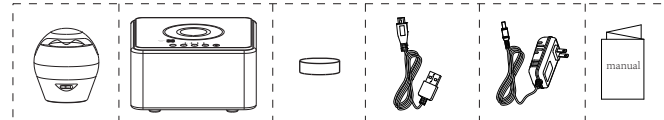
Put down the ball on the mat center vertically by 2 hands hold it, you can loosen ball slowly after the 4 positioning LEDs lit which on the left side of subwoofer



Remove positioning mat, Ball is levitated successfully

Long press on base panel, WORK LED and ball top LED is lit. F1 re-connect last used phone firstly, work status blue LED lit stable means re-connect successfully, flashing means re-connect failure, waiting for other phone to connect, Please longpress to make F1 entering into another phone pair status, if you like to change using

### Packing list



### Trouble shooting

1. **Ball can't be turned on.**  
Check the power switch is pushed to ON position; please charge it when the ball is low battery.
2. **Can't search F1 in BT device list on phone.**  
Please observe the work status LED of ball; it's connected when blue LED is light on. In this case, ball is forced into pairing state when long press button on the subwoofer panel.
3. **Ball can't be levitated.**  
Check whether the subwoofer is placed on iron table or other magnetic objects; make sure the power adapter is plugged into the subwoofer DC-12V socket, Check whether the 4 LEDs in center ring of subwoofer are lit, Operate it according to manual.
4. **The base can't be turned on.**  
Please turn on the base and ball, make sure the ball is levitated on the base, and the ball battery voltage is normal, otherwise, it can't work.

### Special notice

1. Please stop placing ball to levitate on subwoofer when you try it many times, otherwise, the electromagnetic servo system would be overheated and protection circuit is turned on while subwoofer temperature exceeds 75 degrees Celsius, please try it again after 10 minutes.
2. Please pick up the ball and adsorb it on the top of subwoofer before you unplug the subwoofer DC power. Ball will fall down when subwoofer power cut accidentally.
3. The F1 should be put away more than 80cm from phones, computers, bank cards and any objects easily magnetized because there are permanent magnets in it. Avoid using F1 in the severe electromagnetic environment, such as iron table.
4. **This is not a toy and it is not suitable for the children under 12 years old to use .**

### FCC STATEMENT :

This device complies with Part 15 of the FCC Rules. Operation is subject to the following two conditions:

- (1) This device may not cause harmful interference, and
- (2) This device must accept any interference received, including interference that may cause undesired operation.

**Warning:** Changes or modifications not expressly approved by the party responsible for compliance could void the user's authority to operate the equipment.

NOTE: This equipment has been tested and found to comply with the limits for a Class B digital device, pursuant to Part 15 of the FCC Rules. These limits are designed to provide reasonable protection against harmful interference in a residential installation. This equipment generates uses and can radiate radio frequency energy and, if not installed and used in accordance with the instructions, may cause harmful interference to radio communications. However, there is no guarantee that interference will not occur in a particular installation. If this equipment does cause harmful interference to radio or television reception, which can be determined by turning the equipment off and on, the user is encouraged to try to correct the interference by one or more of the following measures:

- Reorient or relocate the receiving antenna.
- Increase the separation between the equipment and receiver.
- Connect the equipment into an outlet on a circuit different from that to which the receiver is connected.
- Consult the dealer or an experienced radio/TV technician for help.

### RF warning statement:

The device has been evaluated to meet general RF exposure requirement. The device can be used in portable exposure condition without restriction.