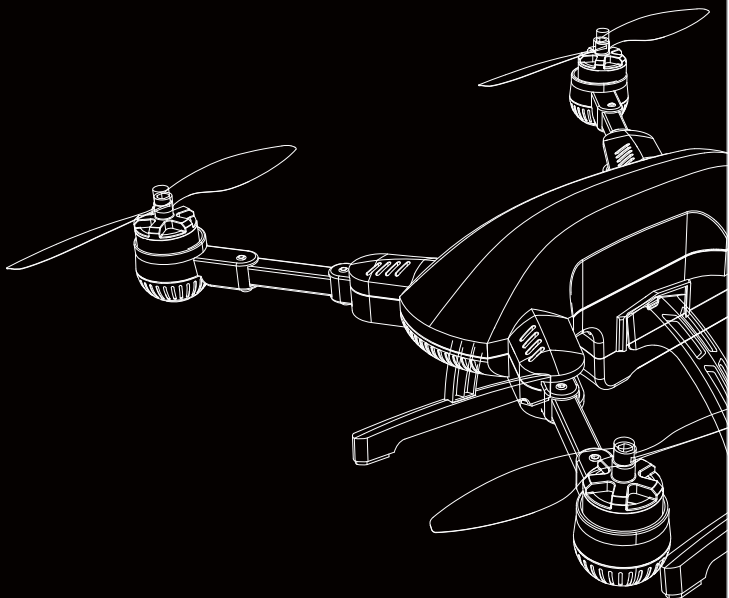




Dragonfly Drone

— Installation Manual —



See yourself in another vision

Record the unique life of yours from the view of sky

ShenZhen Simteo Intelligent Technology Co.LTD
West Industry Building A65 Park road Bao an District,
Shenzhen China 51800
TELL: 400-9801-112
Web: www.simtoo.com

(1) Safe Flying Tips

1.Ensure you are in an open area, most of your aircraft's abilities rely on strong GPS signal that can easily be weakened by nearby structures.

2.Put the aircraft on the flat ground. Long press the power button on the aircraft tail, when the Red indicators keep on.

3.After startup, aircraft will have self-checking. Don't touch or move aircraft when it's self-checking in case of failure. Blue indicators are quick flashing when self-checking. It becomes slow flashing when self-checking completes. Aircraft will also alarm "Di-Di-Di-...." when gimbal self-checking complete. When the watch displays 16 satellites, it's ready to fly.

4.You'd better keep 2 meters away from the aircraft when it takes off, in case of danger and unstable GPS signal.

5.If aircraft quickly deviate or keep ascending beyond 6 meters due to the site, weather, or surrounding electromagnetic interference, please immediately short press the "land" button to force aircraft to land.



Notes: Keep dragonfly away from people, trees, electric wires and building.



Notes: please keep the flight altitude and range within 20 meters



Notes: Do not fly in strong wind, rains, Thunder, snow or fog



Keep dragonfly in your vision: Do not fly across building or any other obstacles which may cut your vision and radio connection



Notes: Do not fly over roads or near metal structure and strong magnetic field



Notes:
1.Do not fly over roads or near metal structure and strong magnetic field.
2.Keep people **more than 5 meters** away from the aircraft before takeoff to avoid damage by propellers.

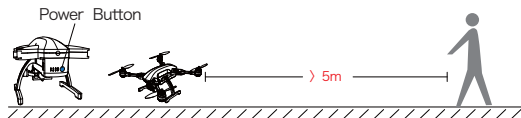


Preconditions

(II) Preconditions of aircraft, watch and tracker

1 Aircraft:

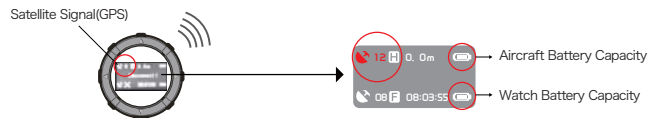
1. Place Dragonfly drone on flat ground before turning on the battery. The front LED lights will shine red and rear LED lights will flash blue slowly.
2. When the rear LED lights rapidly flashes blue, Dragonfly drone is doing self-check. The lights will come back to solid blue when the self-check is completed.
3. Keep people **5 meters** away from Dragonfly drone before starting the fly.



Please do not touch/move the drone when you just switch on the battery otherwise it will cause drone`s self-checking failure. When the drone and gimbal finished self-checking and ring "DI DI DI", you can start to take off the drone.

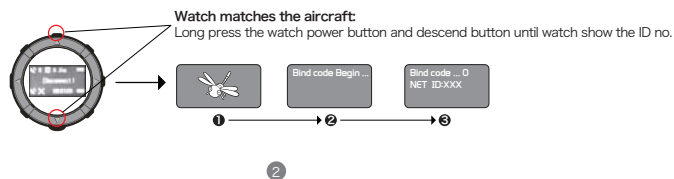
2 Smart Watch:

1. Turn on the aircraft before turning on the watch.
2. Turn on the watch, it` ll search and connect the aircraft until it shows the control interface.
3. After the aircraft connects watch, short press the power button on the watch, the aircraft front red color will be on. Short press it again, the front red color will be off.
4. Dragonfly drone is not recommended to take off until it gets more than **12 GPS** satellites and a sign of "F" are shown at the upper left of watch screen.
5. Smart watch interface will display battery icons, the one on the top is for aircraft, the other one on the bottom is for watch itself.



Match :

Make the aircraft short circuit part connected, power on the aircraft. After a few seconds, take off the connector on the short circuit. Long Press the watch power button and descend button until watch show the ID no, then loose the button and wait for the connection finished.



Preconditions

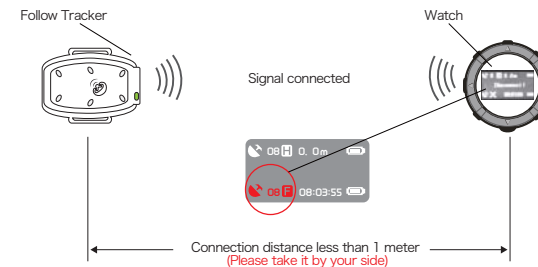


3 GPS Tracker:

Match:

turn on watch and GPS tracker first, then use needle to stick the tiny hole on the back of GPS tracker. The blue indicator flashes when it` s matching. And blue indicator keeps on and "X" icon on the left bottom of watch will disappear when code-matching complete.

1. Turn on GPS tracker, when it connects 8 satellites at least, watch will display " F " icon on the left bottom, then aircraft could be into Follow me Mode.
2. Don` t cover the tracker` s signal; don` t take tracker far from the watch. You` d better keep tracker and watch together within 1 meter.
3. If watch displays " X " on the left bottom, it means disconnect to tracker, far distance between watch and tracker, or you need to match code again.
4. Please ensure that you are familiar with all functions of watch before you get into follow me mode.
5. Please ensure aircraft is far from high-rise buildings and electromagnetic interference. Buildings will reflect GPS signal sometimes, which will lead to aircraft crash. Always fly in open area.
6. Notice your "follow me" path, keep away from buildings, trees and other obstacles in case of any damage.
7. Please keep the front of GPS tracker uncovered, or it` ll make the signal unstable to let the aircraft fly in danger.





Precautions

(III) Precautions of Flight



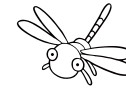
Safety Precautions

1. The propellers are quite harmful, do not fly in crowds.
2. Our drone is quite harmful, fully smart and highly relies on GPS, please fly in a wide open area and keep away from people, trees, electric wires, high buildings, roads or near metal structure and strong magnetic field.
3. If the aircraft goes unstable due to effect from the ground, weather or electromagnetism, press the land button immediately for an emergency landing.
4. Keep people more than 2 meters away from the aircraft before takeoff to avoid damage by propeller.
5. Please do not touch/move the drone when you just switch on the battery otherwise it will cause drone's self-checking failure. When the drone and gimbal finished self-checking and ring "DI DI DI", you can start to take off the drone.



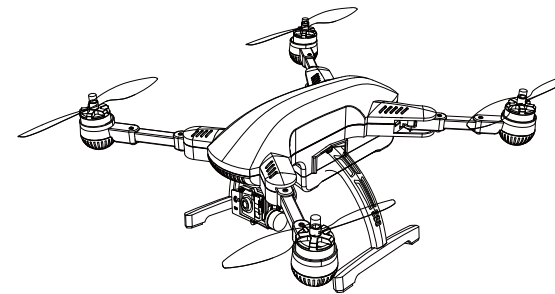
Precautions of Flight

1. Please keep the watch, camera and aircraft fully charged before taking off.
2. The aircraft will be locked again if it doesn't take off within 6 seconds. Please practice the taking off and landing firstly, then try the left or right towards flight. The aircraft will emit a continuous beep sound if it stands by for too long, you can turn off the battery or unlock the aircraft to stop the sound. Please do not assemble the props when you test dragonfly indoor and just try whether the motors are working properly.
3. Propellers must be tightened before flying, otherwise it'll crash. The same color propellers are located diagonally. The black color props are located at the front left and rear right. The silver color props are located at the front right and rear left. (Please note that the front is at the lens of camera).
4. The aircraft will blink red, emit beep and auto-land within 1 minutes when the battery is low power.
5. When the watch is power off, dragonfly will return to the takeoff point and land safety.
6. When the aircraft is low power, it will land in its current spot instead of auto-return.
7. After landing 5 seconds later, the blue light flashes slowly and props stop rotating.
8. It's necessary to press the hover button before one flight mode transferred to another.
9. When you press the Return to home button during flying, the aircraft will rise or decline to the 15 meter height, then go back the above of landing point and decline to land.
10. The return to home function only works when the aircraft is more than 5 meters away from home point, or it'll land directly.
11. The max control height is 20 meters, it'll be not work after rising up to 20 meter height by watch.



Installation Manual of Dragonfly Drone

* 10 steps presenting the smart shooting device





Step1 // Wing(as the diagram1)

Unfold or fold the wings:

1. Unfold the rear wings before folding the front wings.
2. Fold the front wings before folding the rear wings.

Step2 // Landing Gears(as the diagram2)

Installation of landing gear at both sides:

Match the landing gear to the gear slot and push it up.

Diagram1:

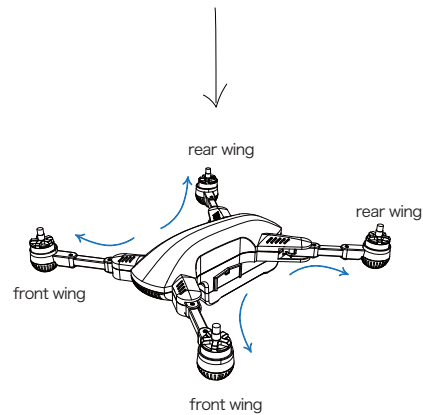
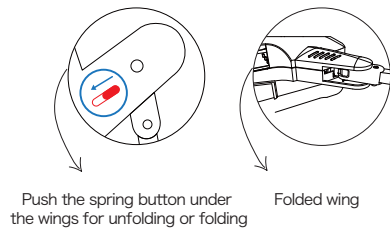
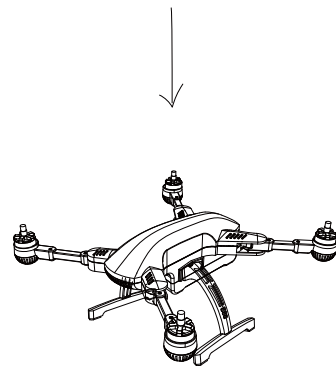
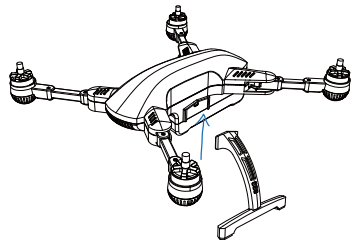


Diagram2:



*Notes: Fold the front wings before folding the rear wings. Do not force the wings without pulling the button under the wing, by which the damage is out of warranty.

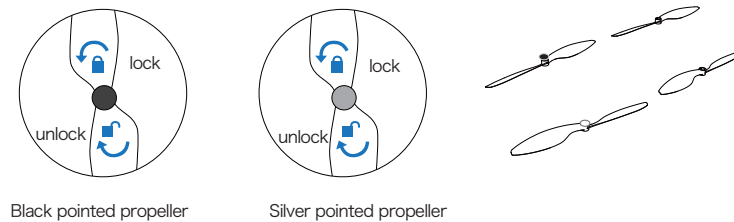


Step3 // Propellers(as the diagram)

Installation of propellers(2 black pointed and 2 silver pointed) :

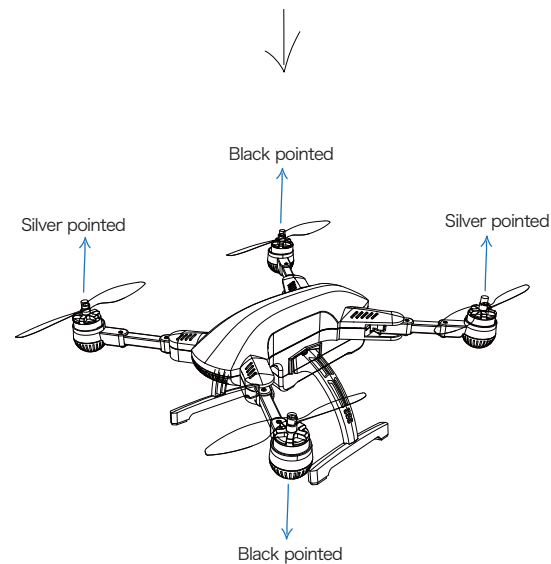
1. Tighten the propeller by spinning it in the lock direction
2. Spin the propeller in the unlock direction to loosen it.

Diagram:



Black pointed propeller

Silver pointed propeller

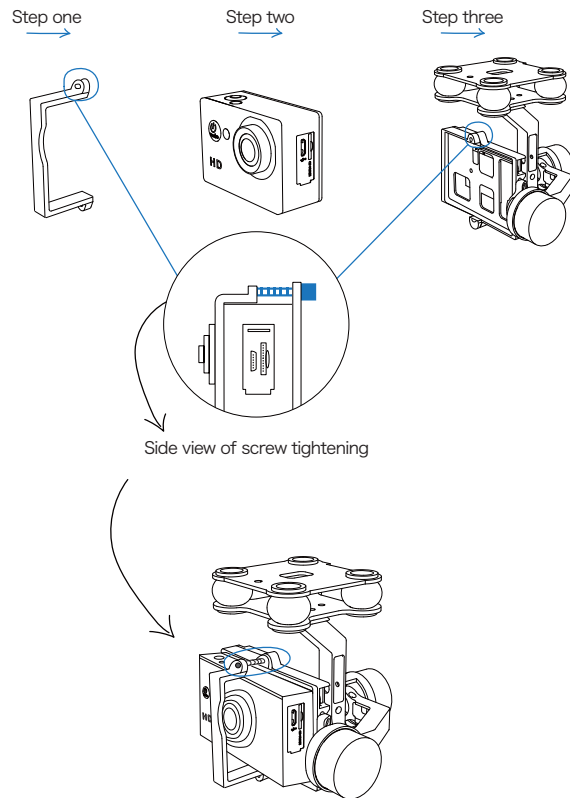




Step4 Gimbal & Camera Installation(as the diagram)

- 1.Release the gimbal clamp
- 2.Fit the camera into the gimbal holder
- 3.Tighten the gimbal clamp with long screw

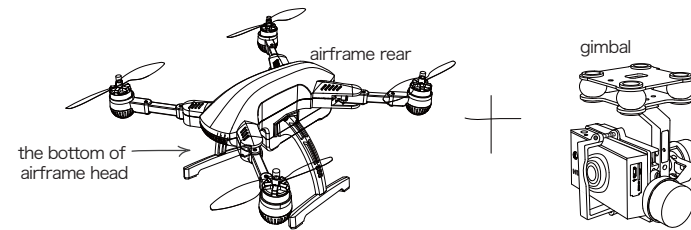
Diagram:



Step5 Fit gimbal into airframe

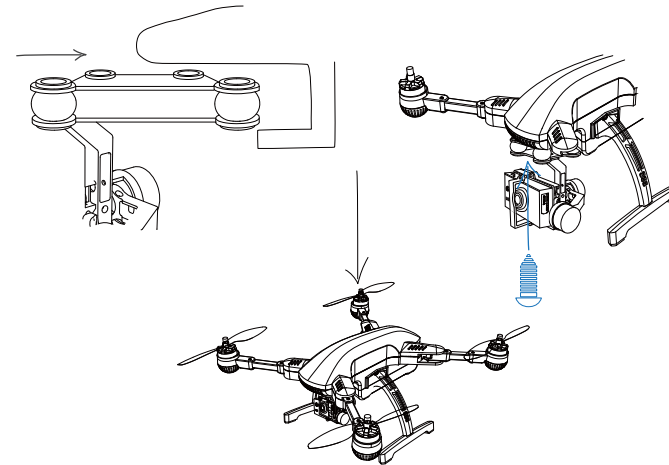
- 1.Fit the gimbal mount under the head of airframe.
- 2.Drive a screw into the hole under the head of airframe through the opening of gimbal mount.

Diagram:



Step 1: Push the gimbal into the hanger

Step 2: Match the opening of gimbal mount with the airframe hole and drive in the screw



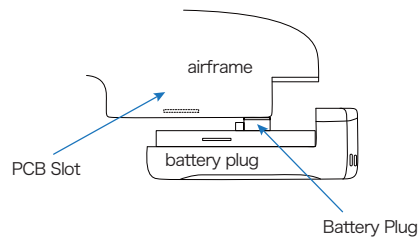
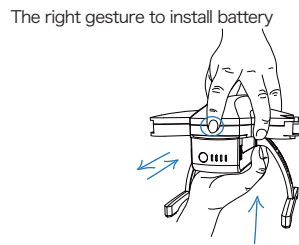
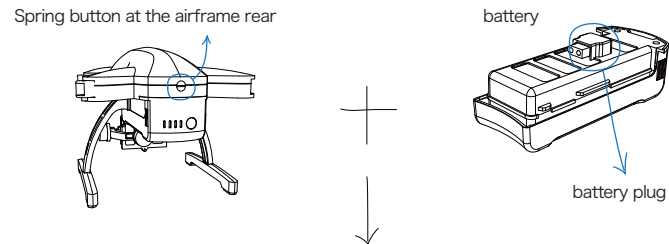
*Warnings: Do not install or remove the gimbal while the aircraft is power on. The screw must be fully driven in to fix the gimbal.

Step6 Fit battery into airframe(as the diagram)

Battery Installation:

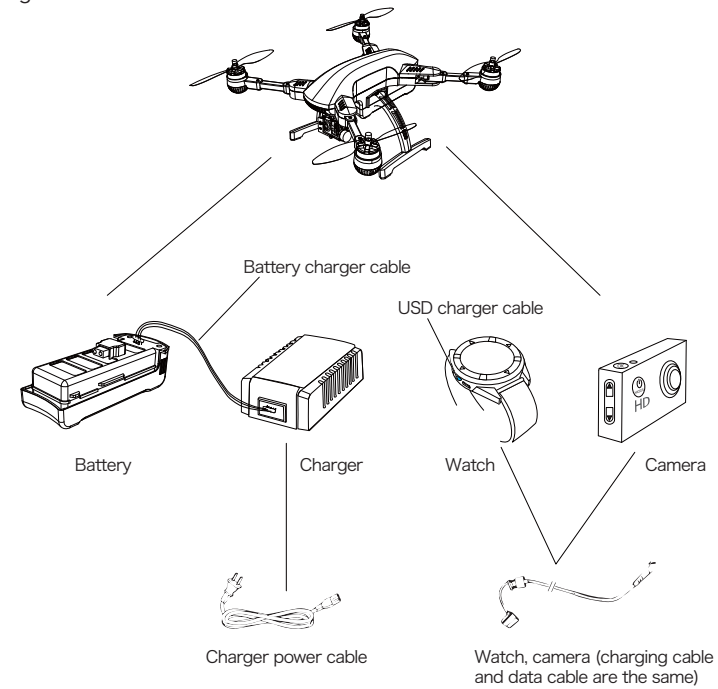
- 1.Pull up the spring button at the airframe rear to let the battery in or out
- 2.Match the battery plug with the slot on PCB before fully pushing the battery in.(as the diagram)

Diagram:



Step7 Charging cable for battery, charger, watch, camera (as the diagram)

Diagram:



| Aircraft | |
|------------------------------|--------------------------------------|
| Connecting Feature | |
| Frequency Range | 915MHz |
| Modulation Mode | FSK |
| Line of Sight Range | 60m(180ft) |
| General Specification | |
| Battery | 5500mAh 3S Lion-rechargeable battery |
| Color | Red/Black/Blue |
| Weight | 1250g |



Smart Mode - Follow me

Note:

This equipment has been tested and found to comply with the limits for a Class B digital device, pursuant to Part 15 of the FCC Rules. These limits are designed to provide reasonable protection against harmful interference in a residential installation. This equipment generates, uses and can radiate radio frequency energy and, if not installed and used in accordance with the instructions, may cause harmful interference to radio communications.

However, there is no guarantee that interference will not occur in a particular installation. If this equipment does cause harmful interference to radio or television reception, which can be determined by turning the equipment off and on, the user is encouraged to try to correct the interference by one or more of the following measures:

- Reorient or relocate the receiving antenna.
- Increase the separation between the equipment and receiver.
- Connect the equipment into an outlet on a circuit different from that to which the receiver is connected.
- Consult the dealer or an experienced radio/TV technician for help.

The device has been evaluated to meet general RF exposure requirement. The device can be used in portable exposure condition without restriction. This device and its antenna(s) must not be co-located or operation in conjunction with any other antenna or transmitter.

Caution:

Any changes or modifications not expressly approved by the party responsible for compliance could void the user's authority to operate this equipment.