

Product Specification



BANT3537/1575.42-X-65-12.5T2-BOA

Single-band antenna

3550-3700

Dual Polarization

HPBW

360°

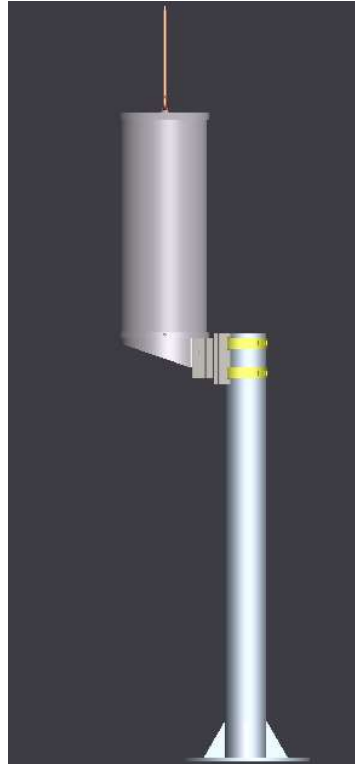
Electrical Properties

Frequency Range (MHz)	3550-3700	1575.42±1.023
Polarization (°)	±45°	RHCP
VSRW	≤1.5	≤1.5
Isolation (dB)	≥28	/
Gain (dBi)	12.5	LNA: 20
Horizontal -3dB Beamwidth (°)	360	110
Vertical -3dB Beamwidth (°)	8.5	110
Upper Side Lobe Suppression (dB)	13	/
Front to back Ratio, ±30 (dB)	/	/
Cross-Polar Discrimination 0° (dB)	≥15	/
Cross-Polar Discrimination±60° (dB)	/	/
Electrical Downtilt (°)	2	/
PIM3 (2x43 dBm carrier) (dBc)	/	/
Impedance (Ω)	50	50
Grounding	DC Ground	DCVoltage1.5-3.6V
Max. Average Input Power per Port (W)	20	/

Mechanical Properties

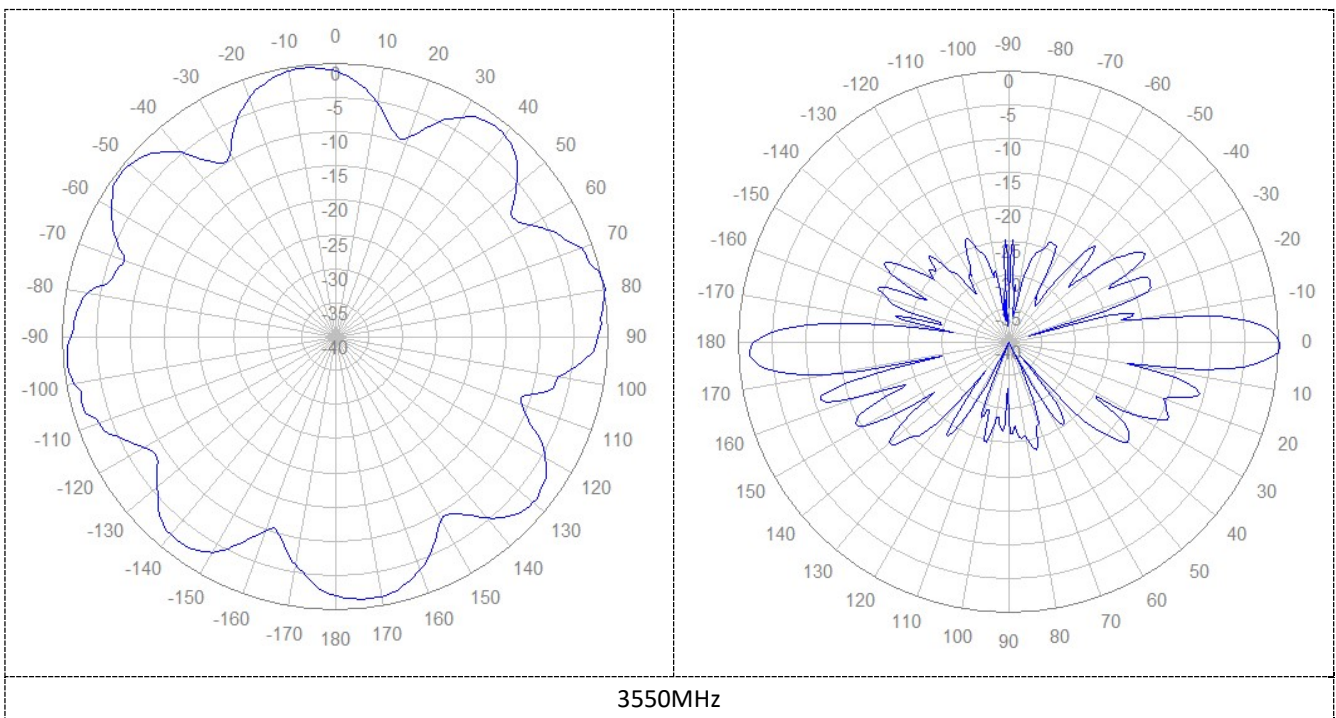
Radome Material	UPVC
Radome Colour	White
Connector Type	MCX-J*4
Antenna Dimensions (H x W x D) (mm)	Φ200×522
Antenna Weight (kg)	1.82
Operating Temperature (°C)	-40~+70
Wind Load (at 150km/h)	135
Maximum Wind Speed (km/h)	200

Product Specification



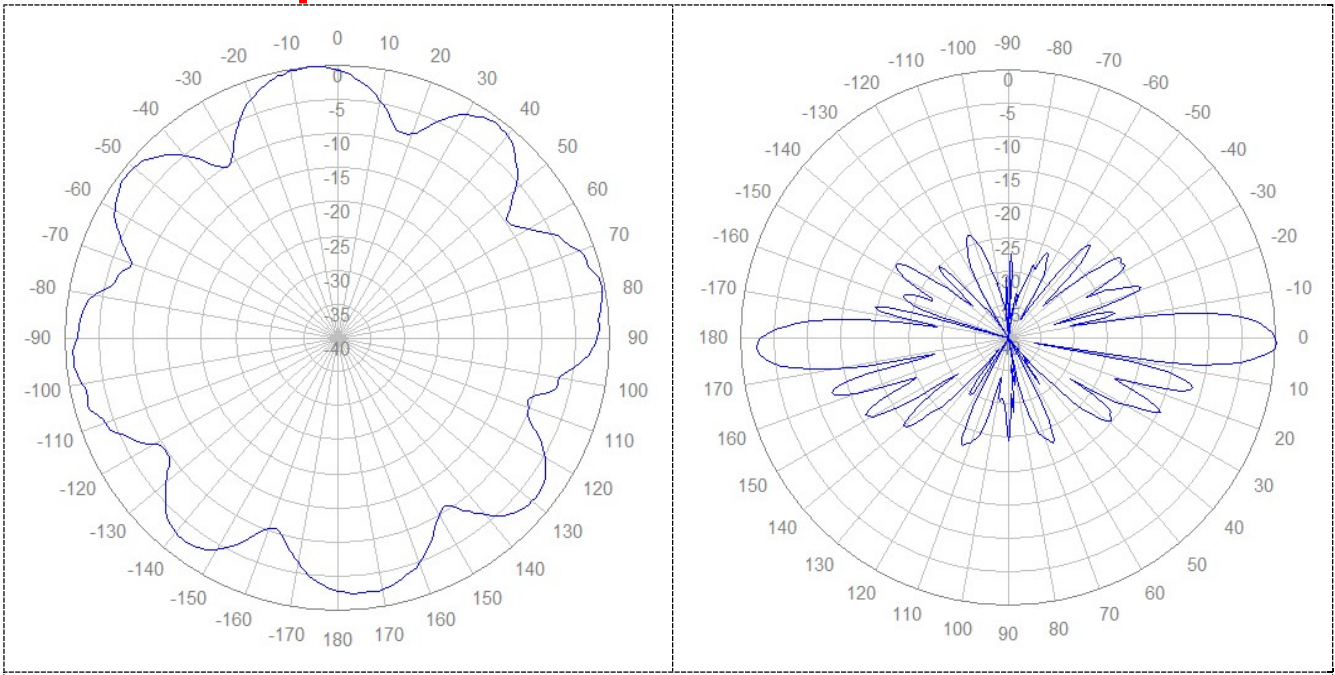
H-Pattern

V-Pattern

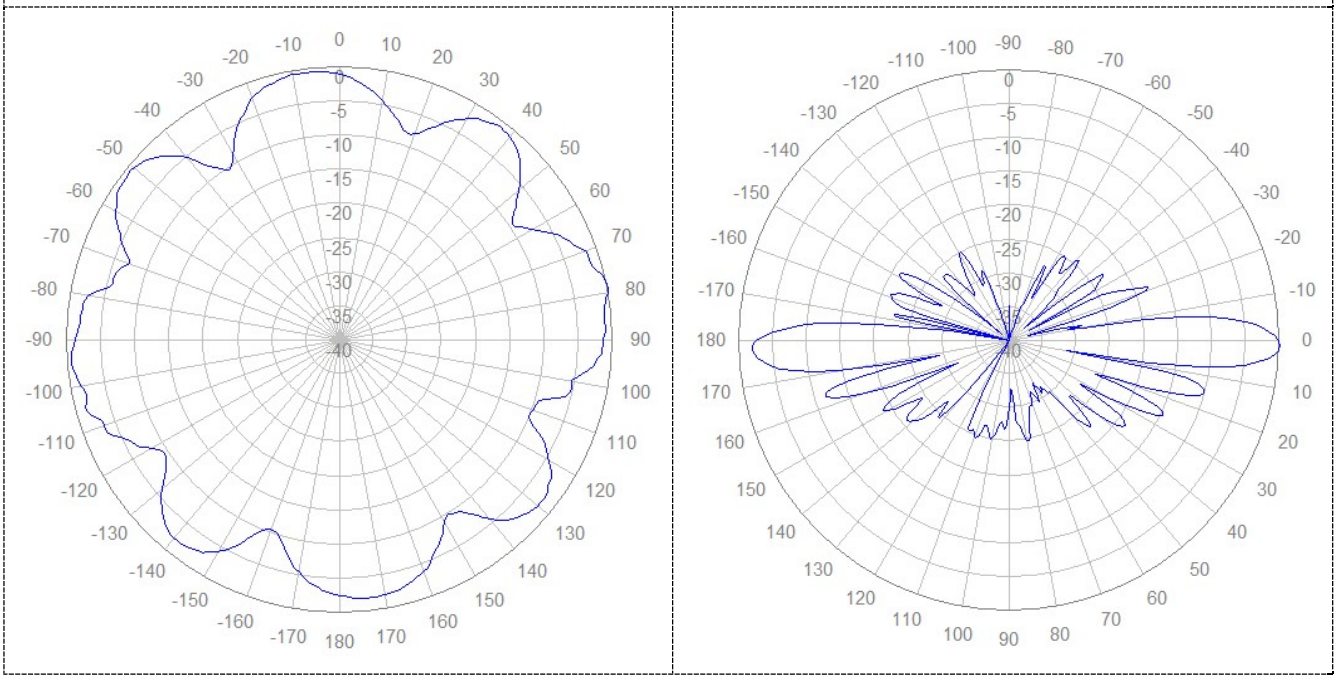


Product Specification

Baicells



3625MHz



3700MHz