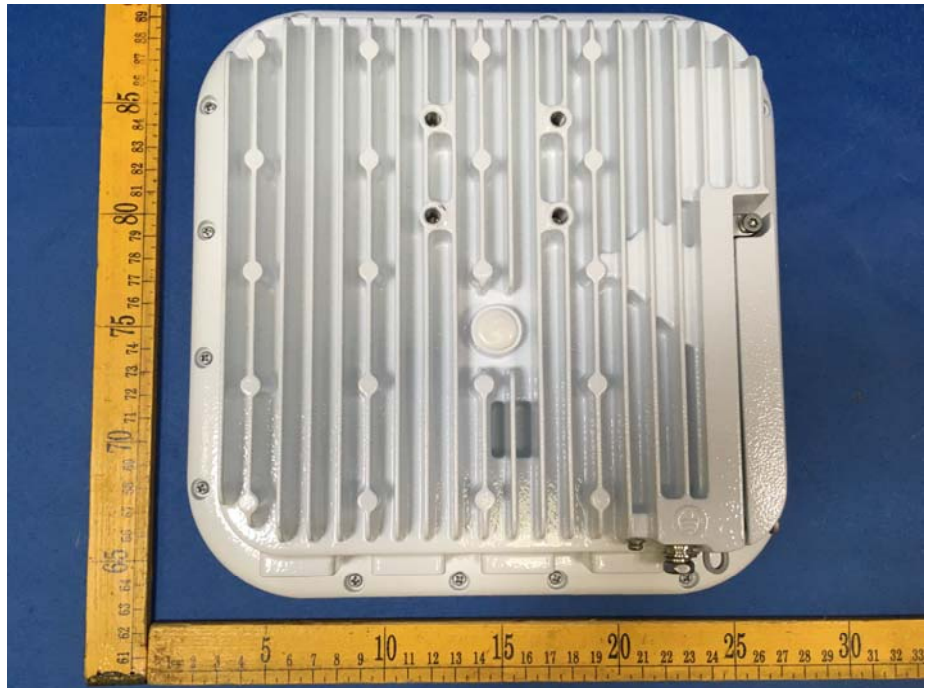


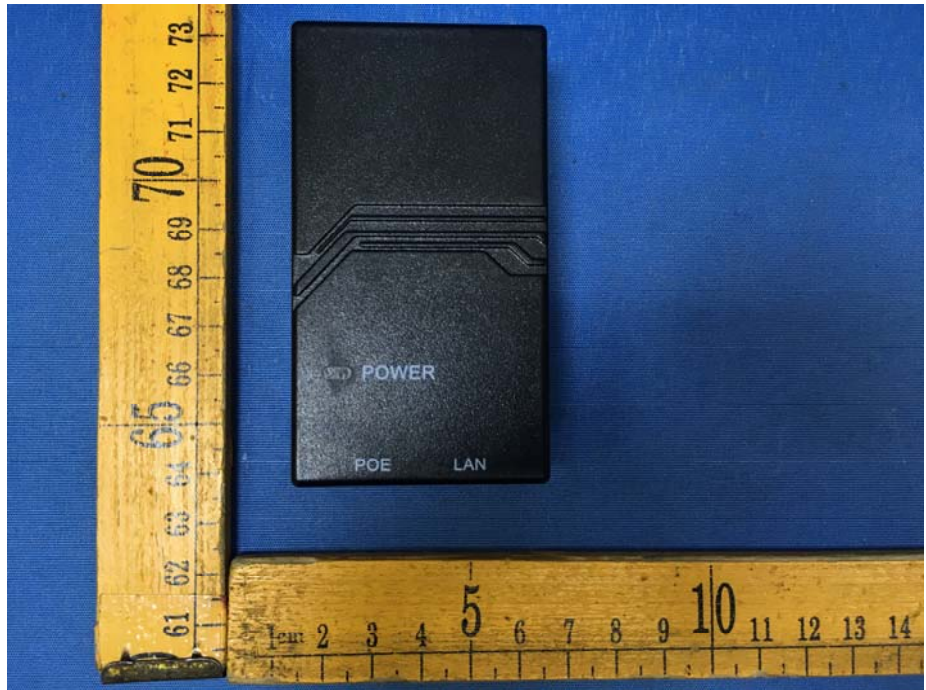
EUT – External View Model EG7035E-M11











SHENZHEN GOSPELL DIGITAL TECHNOLOGY CO.,LTD.
SWITCHING MODE POWER SUPPLY/电源适配器
MODEL/型号: G0549A-240-050

INPUT/输入: 100-240V ~ 50/60Hz 0.5A MAX

OUTPUT/输出: 24V==0.5A

I.T.E. POWER SUPPLY +4,5pins, -7,8pins

This device complies with part 15 of the FCC Rules.

Operation is subject to the following two conditions:

(1)This device may not cause harmful interference, and

(2)This device must accept any interference received,
including interference that may cause undesired operation.

WARNING

RISK OF ELECTRIC SHOCK

DO NOT OPEN

制造商: 深圳市高斯宝电气技术有限公司

MADE IN CHINA/中国制造



LISTED
E338182



株式会社



www.tuv.com

ID: 1419043634

