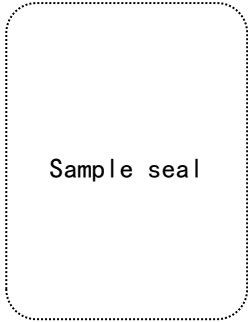




APPROVAL SHEET



Customer Name XIAOMI

Product Model RC04

Customer P/N L530100043221

Specifications 2.4GHz/5GHz, 3dBi, 1.13 RFcable, 2G=80mm, 5G=45mm

Southstar P/N 3.N102.1050

Production date 2024-05-25

Revision 1.0

Southstar		
FICTION/TEST	DQE	R&D
Jinjiang Zhang		
Customer		
PUR	QC	R&D

Manufacturers: SHENZHEN SOUTH STAR TECHNOLOGY CO., LTD

Office address: 803, Tianshu block, Xinggang tongchuanghui, No. 6099, Bao'an Avenue, Xinh community, Fuhai street, Bao'an District, Shenzhen

Production address:No. 3, Chigang Nanfang 1st Road, Humen Town, Dongguan City, Guangdong Province

Tel: 0755-27474071 0769-88086190

Http://www.southstar-tech.com



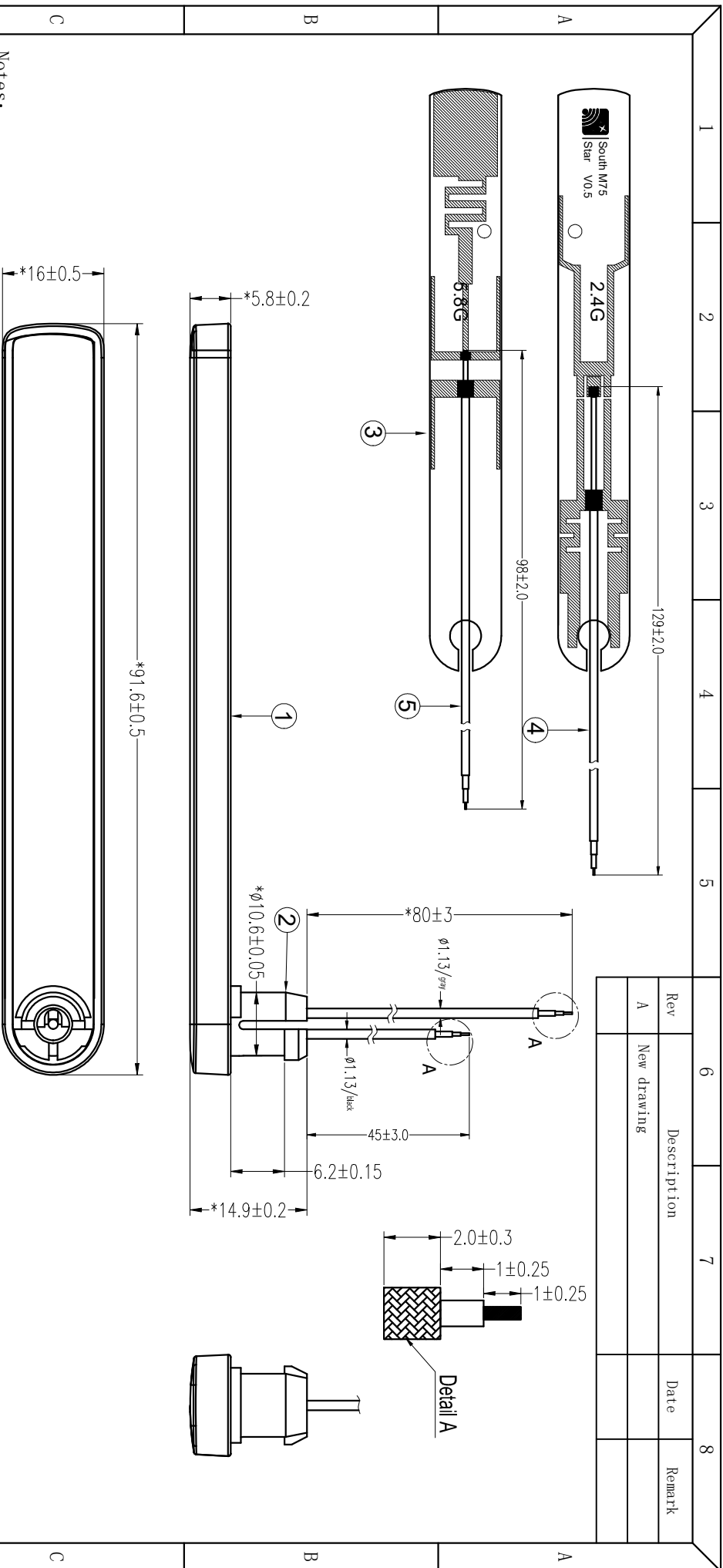
Index

1、 Cover	1
2、 Colophon	2
3、 Index	3
4、 The basic parameters	4
5、 Product Drawing	5
6、 Test Equipment & Conditions	6
7、 Test Report	7-10
8、 Antenna assembly picture	11
9、 Packing method	12

Antenna Specification

A. Electrical Characteristics	
Frequency	2400MHz~2500 MHz/5150MHz~5850 MHz
VSWR	≤ 2
Efficiency	>60%
Impedance	50 Ohm
Polarization	Linear
Gain	3dBi
Note	
B. Material & Mechanical Characteristics	
Material of Radiator	
Cable Type	2G: 1.13 Gray 5G:1.13 Black
Connector Type	
C. Environmental	
Operation Temperature	- 30 °C ~ + 65 °C
Storage Temperature	- 40 °C ~ + 70 °C

Rev	Description	Date	Remark
A	New drawing		



- Notes:
1. Mark "*" means key dimensions;
 2. Unmarked ones refer to drawings;
 3. There should not be cold/false soldering, short/open circuit etc.;
 4. ALL Parts must comply with RoHS;
 5. 100% Performance inspection is a must.

No.	Part No.	Name	Specification	Amount	Remark
1	X02-8380-ROA	5. 8g cable	φ1.13/black	1	
4	X02-8378-ROA	2. 4G-1 cable	φ1.13/gray	1	
3	D04-2094-ROA	PCB	FR4 gray/T=0.6mm	1	
2	S01-0659-ROB	bottom	PC+ABS black	1	
1	S01-0658-ROA	top	ABS black	1	

South Star		Dongguan South Star Technology Co., Ltd Shenzhen South Star Technology Co., Ltd		
Third Angle	Project	RC04	Date	2024-05-27
0~10	Part Name	WiFi-1	Designed by	Shuanglu Lei
10~18	Part No.	NI2-7508-ROA	Checked by	Jinjian Zhang
18~30	Material	/	Approved by	
30~40	DWG No.		Unit	mm
40~	Location		Scale	1:1
			Rev	A

Test Equipment & Conditions

1. Network Analyzers:

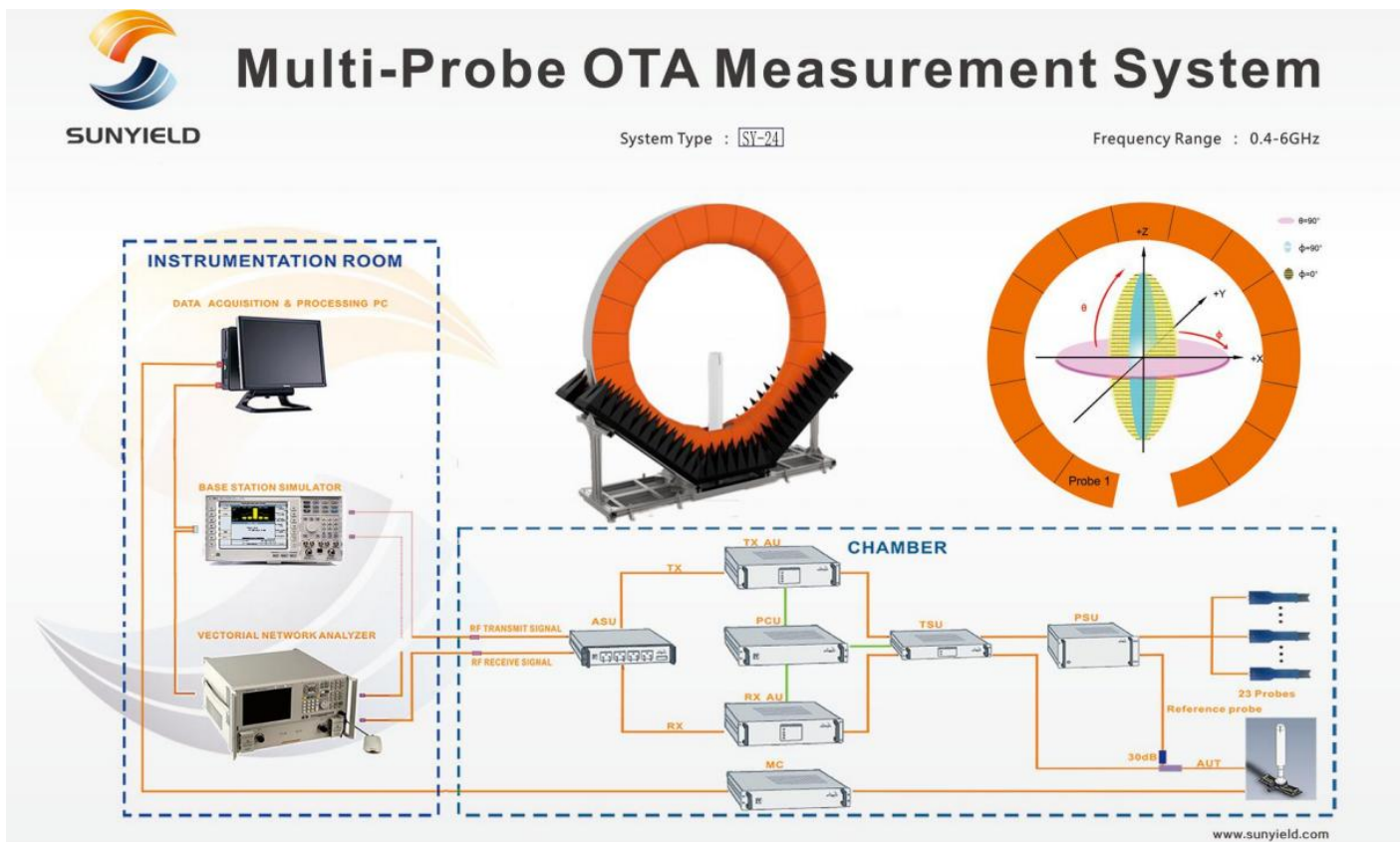
Keysight E5071C

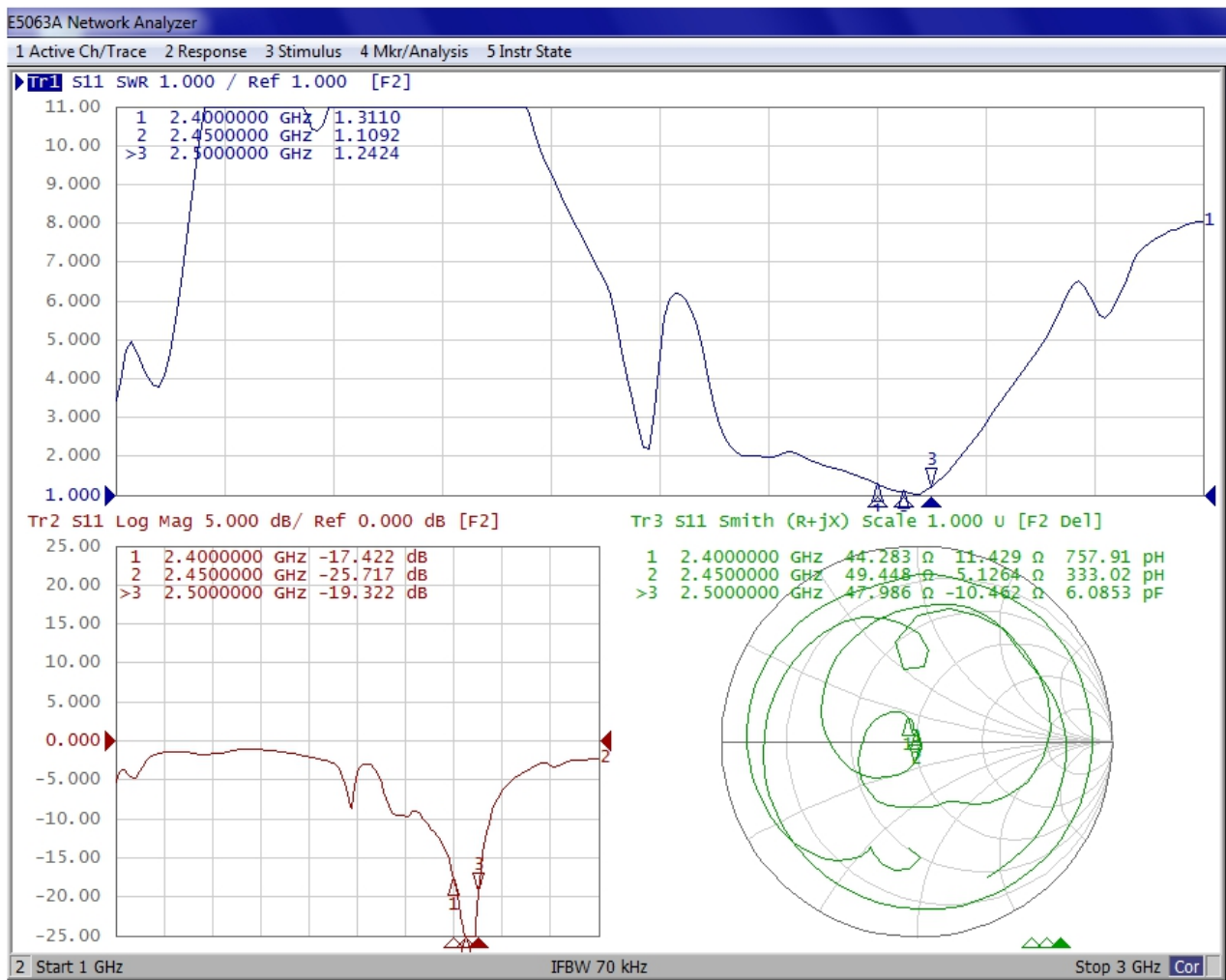
2. Comprehensive tester:

CMW500 、 MT8000A、 MT8862A

3. 3D Chamber Test System:

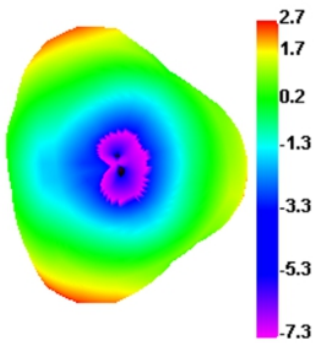
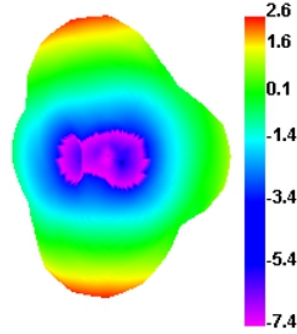
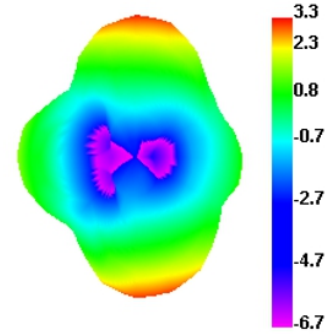
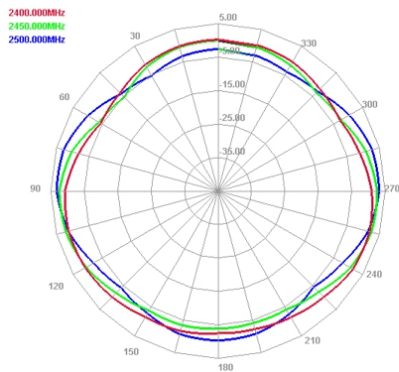
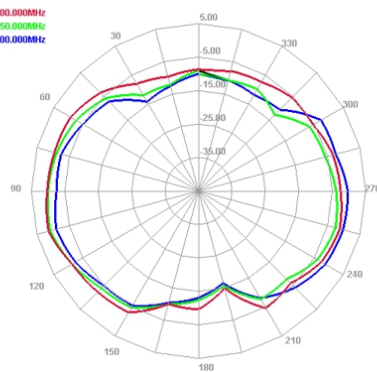
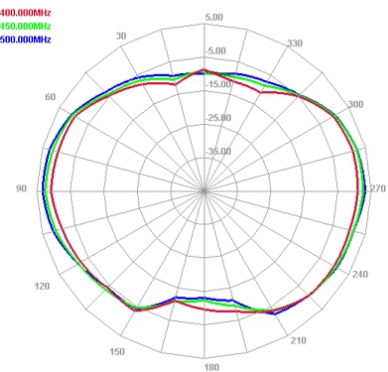
Calibrated until :2024. 03. 13



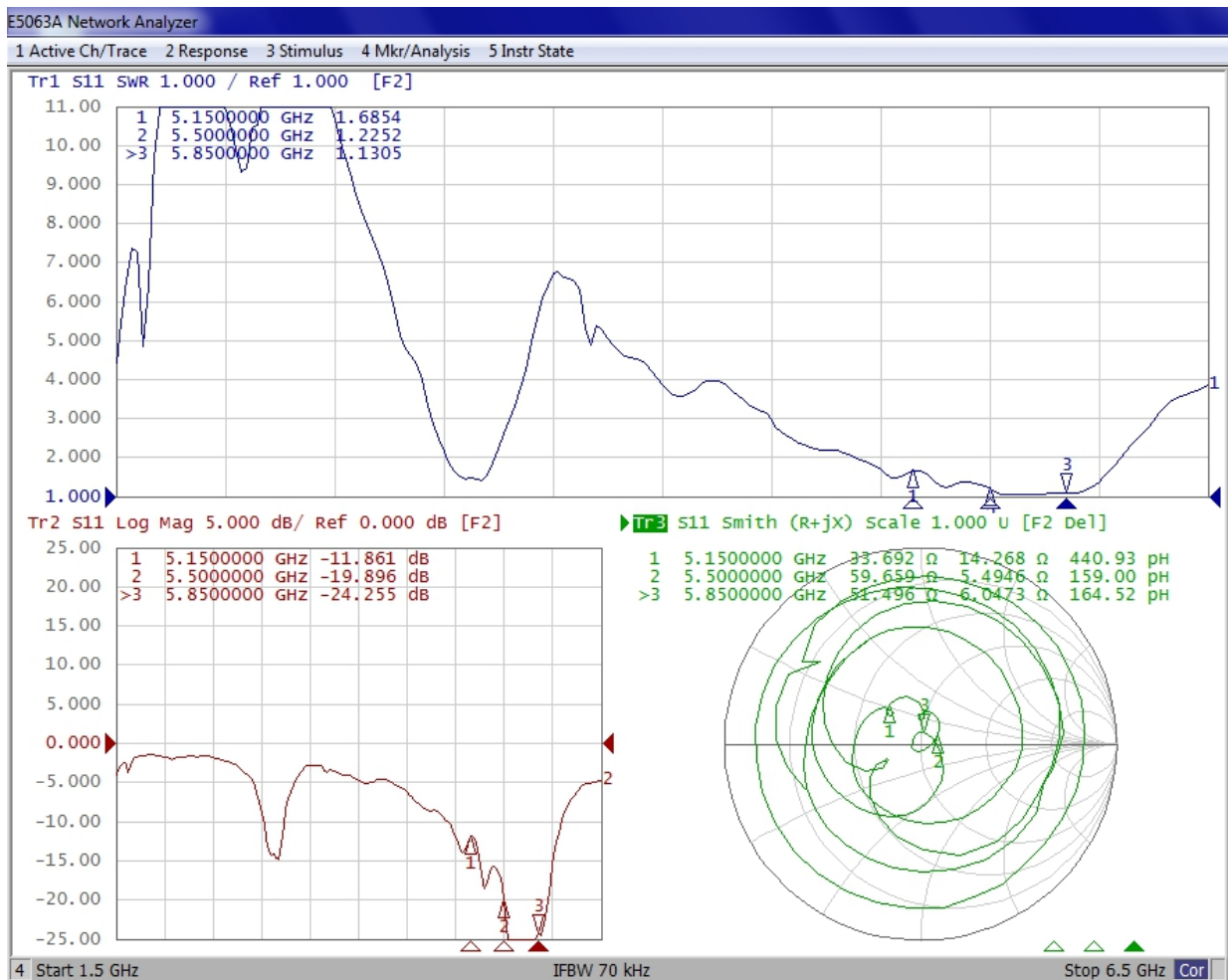
Antenna Impedance: S11


Efficiency& GAIN:

Freq (MHz)	Effi (%)	Gain (dBi)
2400	69.97	2.74
2410	67.48	2.88
2420	67.19	2.96
2430	71.07	2.74
2440	73.07	2.68
2450	72.43	2.63
2460	70.81	3.02
2470	67.42	3.36
2480	70.72	3.31
2490	71.88	3.08
2500	67.47	3.28

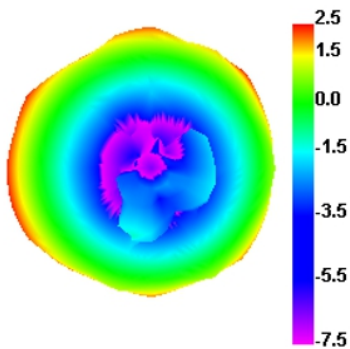
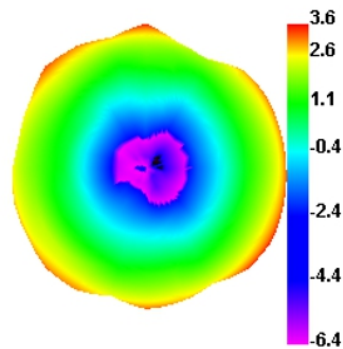
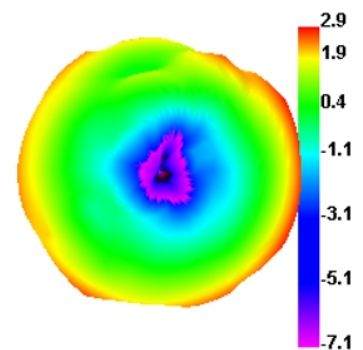
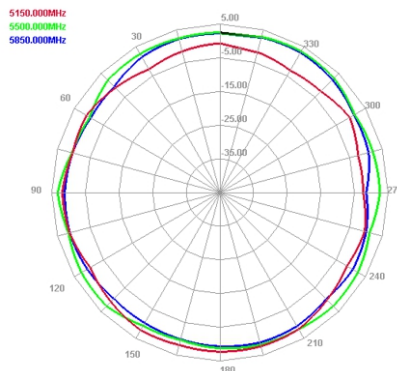
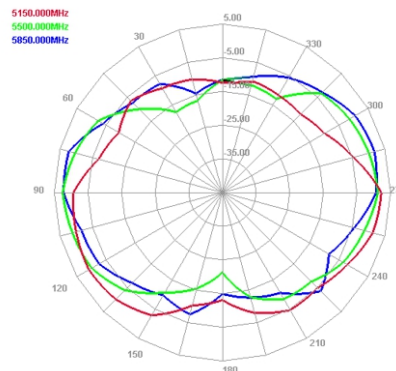
2400.000MHz

2450.000MHz

2500.000MHz

Horizontal

E1 Face

E2 Face


Antenna Impedance: S11



Efficiency& GAIN:

Freq (MHz)	Effi (%)	Gain (dBi)
5150	64.48	2.53
5200	63.21	2.93
5250	64.54	3.85
5300	62.95	3.87
5350	64.47	3.06
5400	66.21	3.01
5450	63.8	3.26
5500	72.8	3.57
5550	74.5	3.72
5600	67.87	3.06
5650	65.58	2.63
5700	72.26	3.02
5750	71.22	2.95
5800	68.81	2.89
5850	66.91	2.95

5150.000MHz

5500.000MHz

5850.000MHz

Horizontal

E1 Face

E2 Face
