



Mode	21																																																																																																																																																																									
	LF																																																																																																																																																																									
	2400-2483.5_802.11n HT40_CH06_2437MHz																																																																																																																																																																									
ANT	1+2																																																																																																																																																																									
Pol.	Horizontal	Vertical																																																																																																																																																																								
QP/ Peak	<p>Site : 830K3-HY Condition: QP 3m LF_633058001_231805 HORIZONTAL</p> <table border="1"> <thead> <tr> <th>Peak</th> <th>Freq (MHz)</th> <th>Level (dBm)</th> <th>Line Margin (dB)</th> <th>Read Level (dBm)</th> <th>Ant Factor (dB)</th> <th>Cable Loss (dB)</th> <th>Preamp Factor (dB)</th> <th>Aux Factor (dB)</th> <th>APos (cm)</th> <th>TPos (deg)</th> <th>Remark</th> </tr> </thead> <tbody> <tr><td>1</td><td>38.00</td><td>21.50</td><td>48.00</td><td>-18.50</td><td>28.70</td><td>24.48</td><td>1.87</td><td>32.75</td><td>0.00</td><td>--</td><td>Peak</td></tr> <tr><td>2</td><td>134.76</td><td>32.34</td><td>43.50</td><td>-11.16</td><td>45.37</td><td>17.73</td><td>1.81</td><td>32.70</td><td>0.13</td><td>--</td><td>Peak</td></tr> <tr><td>3</td><td>228.12</td><td>30.91</td><td>46.00</td><td>-15.09</td><td>45.95</td><td>15.29</td><td>2.22</td><td>32.72</td><td>0.17</td><td>--</td><td>Peak</td></tr> <tr><td>4</td><td>334.58</td><td>30.40</td><td>46.00</td><td>-15.60</td><td>48.52</td><td>19.06</td><td>2.72</td><td>32.80</td><td>0.10</td><td>--</td><td>Peak</td></tr> <tr><td>5</td><td>788.83</td><td>35.76</td><td>46.00</td><td>-10.24</td><td>37.97</td><td>26.79</td><td>3.79</td><td>32.94</td><td>0.15</td><td>--</td><td>Peak</td></tr> <tr><td>6</td><td>949.56</td><td>32.65</td><td>46.00</td><td>-13.35</td><td>28.69</td><td>31.05</td><td>4.29</td><td>31.64</td><td>0.26</td><td>--</td><td>Peak</td></tr> </tbody> </table>	Peak	Freq (MHz)	Level (dBm)	Line Margin (dB)	Read Level (dBm)	Ant Factor (dB)	Cable Loss (dB)	Preamp Factor (dB)	Aux Factor (dB)	APos (cm)	TPos (deg)	Remark	1	38.00	21.50	48.00	-18.50	28.70	24.48	1.87	32.75	0.00	--	Peak	2	134.76	32.34	43.50	-11.16	45.37	17.73	1.81	32.70	0.13	--	Peak	3	228.12	30.91	46.00	-15.09	45.95	15.29	2.22	32.72	0.17	--	Peak	4	334.58	30.40	46.00	-15.60	48.52	19.06	2.72	32.80	0.10	--	Peak	5	788.83	35.76	46.00	-10.24	37.97	26.79	3.79	32.94	0.15	--	Peak	6	949.56	32.65	46.00	-13.35	28.69	31.05	4.29	31.64	0.26	--	Peak	<p>Site : 830K3-HY Condition: QP 3m LF_633058001_231805 VERTICAL</p> <table border="1"> <thead> <tr> <th>Peak</th> <th>Freq (MHz)</th> <th>Level (dBm)</th> <th>Line Margin (dB)</th> <th>Read Level (dBm)</th> <th>Ant Factor (dB)</th> <th>Cable Loss (dB)</th> <th>Preamp Factor (dB)</th> <th>Aux Factor (dB)</th> <th>APos (cm)</th> <th>TPos (deg)</th> <th>Remark</th> </tr> </thead> <tbody> <tr><td>1</td><td>32.91</td><td>24.97</td><td>48.00</td><td>-15.03</td><td>33.26</td><td>23.40</td><td>1.06</td><td>32.75</td><td>0.00</td><td>--</td><td>Peak</td></tr> <tr><td>2</td><td>213.33</td><td>33.52</td><td>43.50</td><td>-9.98</td><td>48.89</td><td>14.99</td><td>2.19</td><td>32.72</td><td>0.17</td><td>--</td><td>Peak</td></tr> <tr><td>3</td><td>226.24</td><td>34.10</td><td>46.00</td><td>-11.90</td><td>49.50</td><td>14.95</td><td>2.20</td><td>32.72</td><td>0.17</td><td>--</td><td>Peak</td></tr> <tr><td>4</td><td>329.73</td><td>38.33</td><td>46.00</td><td>-15.67</td><td>48.68</td><td>19.73</td><td>2.76</td><td>32.80</td><td>0.10</td><td>--</td><td>Peak</td></tr> <tr><td>5</td><td>718.70</td><td>38.38</td><td>46.00</td><td>-7.62</td><td>48.07</td><td>27.26</td><td>3.82</td><td>32.92</td><td>0.15</td><td>--</td><td>Peak</td></tr> <tr><td>6</td><td>951.58</td><td>33.46</td><td>46.00</td><td>-12.54</td><td>29.43</td><td>31.10</td><td>4.29</td><td>31.62</td><td>0.26</td><td>--</td><td>Peak</td></tr> </tbody> </table>	Peak	Freq (MHz)	Level (dBm)	Line Margin (dB)	Read Level (dBm)	Ant Factor (dB)	Cable Loss (dB)	Preamp Factor (dB)	Aux Factor (dB)	APos (cm)	TPos (deg)	Remark	1	32.91	24.97	48.00	-15.03	33.26	23.40	1.06	32.75	0.00	--	Peak	2	213.33	33.52	43.50	-9.98	48.89	14.99	2.19	32.72	0.17	--	Peak	3	226.24	34.10	46.00	-11.90	49.50	14.95	2.20	32.72	0.17	--	Peak	4	329.73	38.33	46.00	-15.67	48.68	19.73	2.76	32.80	0.10	--	Peak	5	718.70	38.38	46.00	-7.62	48.07	27.26	3.82	32.92	0.15	--	Peak	6	951.58	33.46	46.00	-12.54	29.43	31.10	4.29	31.62	0.26	--	Peak
Peak	Freq (MHz)	Level (dBm)	Line Margin (dB)	Read Level (dBm)	Ant Factor (dB)	Cable Loss (dB)	Preamp Factor (dB)	Aux Factor (dB)	APos (cm)	TPos (deg)	Remark																																																																																																																																																															
1	38.00	21.50	48.00	-18.50	28.70	24.48	1.87	32.75	0.00	--	Peak																																																																																																																																																															
2	134.76	32.34	43.50	-11.16	45.37	17.73	1.81	32.70	0.13	--	Peak																																																																																																																																																															
3	228.12	30.91	46.00	-15.09	45.95	15.29	2.22	32.72	0.17	--	Peak																																																																																																																																																															
4	334.58	30.40	46.00	-15.60	48.52	19.06	2.72	32.80	0.10	--	Peak																																																																																																																																																															
5	788.83	35.76	46.00	-10.24	37.97	26.79	3.79	32.94	0.15	--	Peak																																																																																																																																																															
6	949.56	32.65	46.00	-13.35	28.69	31.05	4.29	31.64	0.26	--	Peak																																																																																																																																																															
Peak	Freq (MHz)	Level (dBm)	Line Margin (dB)	Read Level (dBm)	Ant Factor (dB)	Cable Loss (dB)	Preamp Factor (dB)	Aux Factor (dB)	APos (cm)	TPos (deg)	Remark																																																																																																																																																															
1	32.91	24.97	48.00	-15.03	33.26	23.40	1.06	32.75	0.00	--	Peak																																																																																																																																																															
2	213.33	33.52	43.50	-9.98	48.89	14.99	2.19	32.72	0.17	--	Peak																																																																																																																																																															
3	226.24	34.10	46.00	-11.90	49.50	14.95	2.20	32.72	0.17	--	Peak																																																																																																																																																															
4	329.73	38.33	46.00	-15.67	48.68	19.73	2.76	32.80	0.10	--	Peak																																																																																																																																																															
5	718.70	38.38	46.00	-7.62	48.07	27.26	3.82	32.92	0.15	--	Peak																																																																																																																																																															
6	951.58	33.46	46.00	-12.54	29.43	31.10	4.29	31.62	0.26	--	Peak																																																																																																																																																															



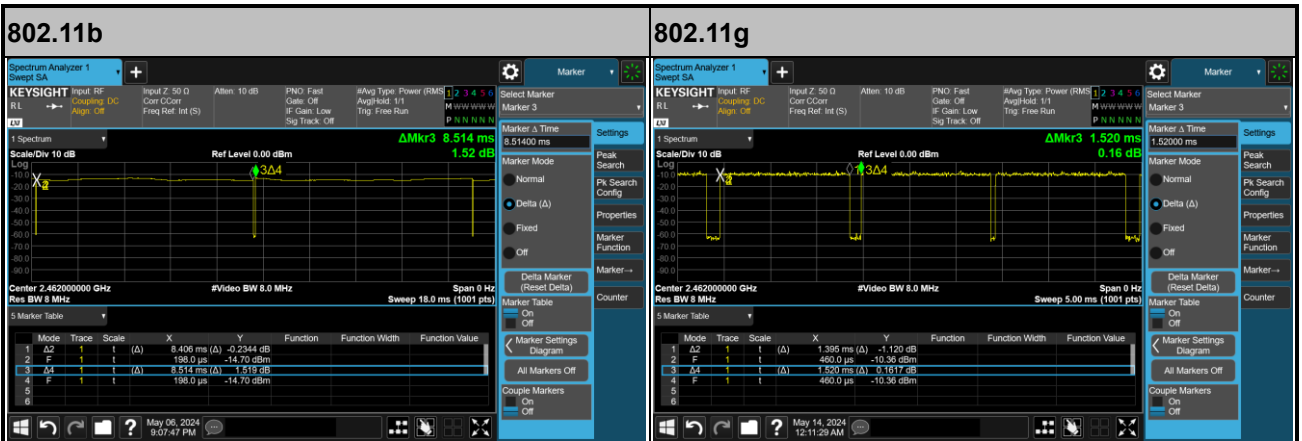
Mode	22																																																									
	SHF																																																									
	2400-2483.5_802.11n HT40_CH06_2437MHz																																																									
ANT	1+2																																																									
Pol.	Horizontal	Vertical																																																								
Peak	<p>Site : 83CH3-HY Condition: PEAK_74 In 88H9178_1225_238718 HORIZONTAL</p> <table border="1"> <thead> <tr> <th>Limit</th> <th>Read</th> <th>Ant</th> <th>Cable</th> <th>Preamp</th> <th>Aux</th> <th>APos</th> <th>TPos</th> <th>Remark</th> </tr> <tr> <th>Freq</th> <th>Level</th> <th>Line Margin</th> <th>Level Factor</th> <th>Loss Factor</th> <th>Loss Factor</th> <th>Factor</th> <th>cm</th> <th>deg</th> </tr> </thead> <tbody> <tr> <td>1 22958.00</td> <td>41.22</td> <td>74.00</td> <td>-32.78</td> <td>52.14</td> <td>39.28</td> <td>19.73</td> <td>68.31</td> <td>-9.54</td> <td>-- Peak</td> </tr> </tbody> </table>	Limit	Read	Ant	Cable	Preamp	Aux	APos	TPos	Remark	Freq	Level	Line Margin	Level Factor	Loss Factor	Loss Factor	Factor	cm	deg	1 22958.00	41.22	74.00	-32.78	52.14	39.28	19.73	68.31	-9.54	-- Peak	<p>Site : 83CH3-HY Condition: PEAK_74 In 88H9178_1225_238718 VERTICAL</p> <table border="1"> <thead> <tr> <th>Limit</th> <th>Read</th> <th>Ant</th> <th>Cable</th> <th>Preamp</th> <th>Aux</th> <th>APos</th> <th>TPos</th> <th>Remark</th> </tr> <tr> <th>Freq</th> <th>Level</th> <th>Line Margin</th> <th>Level Factor</th> <th>Loss Factor</th> <th>Loss Factor</th> <th>Factor</th> <th>cm</th> <th>deg</th> </tr> </thead> <tbody> <tr> <td>1 24754.00</td> <td>42.89</td> <td>74.00</td> <td>-31.91</td> <td>51.61</td> <td>39.59</td> <td>28.78</td> <td>68.35</td> <td>-9.54</td> <td>-- Peak</td> </tr> </tbody> </table>	Limit	Read	Ant	Cable	Preamp	Aux	APos	TPos	Remark	Freq	Level	Line Margin	Level Factor	Loss Factor	Loss Factor	Factor	cm	deg	1 24754.00	42.89	74.00	-31.91	51.61	39.59	28.78	68.35	-9.54	-- Peak
Limit	Read	Ant	Cable	Preamp	Aux	APos	TPos	Remark																																																		
Freq	Level	Line Margin	Level Factor	Loss Factor	Loss Factor	Factor	cm	deg																																																		
1 22958.00	41.22	74.00	-32.78	52.14	39.28	19.73	68.31	-9.54	-- Peak																																																	
Limit	Read	Ant	Cable	Preamp	Aux	APos	TPos	Remark																																																		
Freq	Level	Line Margin	Level Factor	Loss Factor	Loss Factor	Factor	cm	deg																																																		
1 24754.00	42.89	74.00	-31.91	51.61	39.59	28.78	68.35	-9.54	-- Peak																																																	



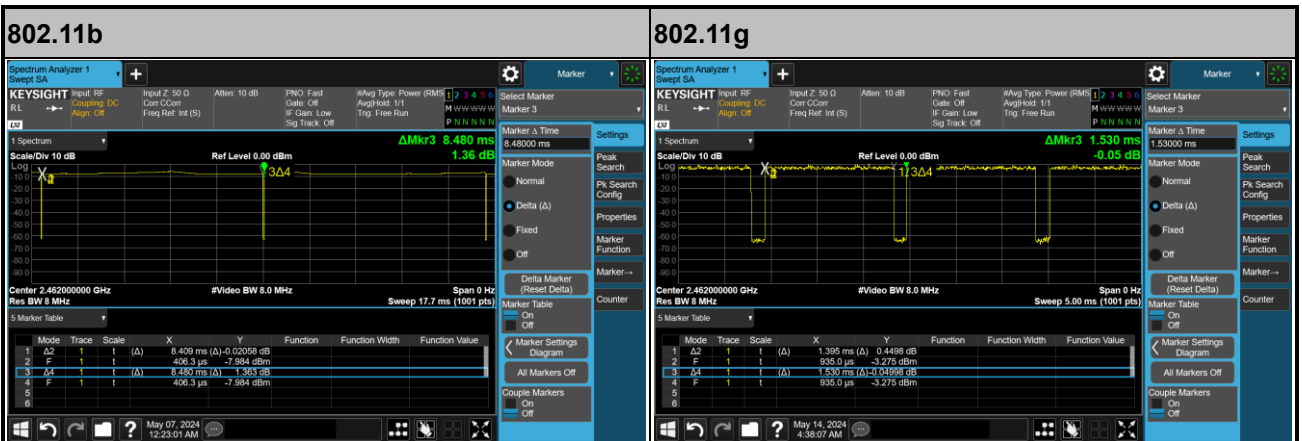
Appendix D. Duty Cycle Plots

Antenna	Band	Duty Cycle(%)	T(us)	1/T(kHz)	VBW Setting
1	802.11b	98.73	-	-	10Hz
2	802.11b	99.16	-	-	10Hz
1	802.11g	91.78	1395	0.72	750Hz
2	802.11g	91.18	1395	0.72	750Hz
1+2	2.4GHz 802.11n HT20	92.88	1305	0.77	820Hz
1+2	2.4GHz 802.11n HT40	81.00	648	1.54	1.6kHz

<Ant. 1>



<Ant. 2>





MIMO <Ant. 1+2>

