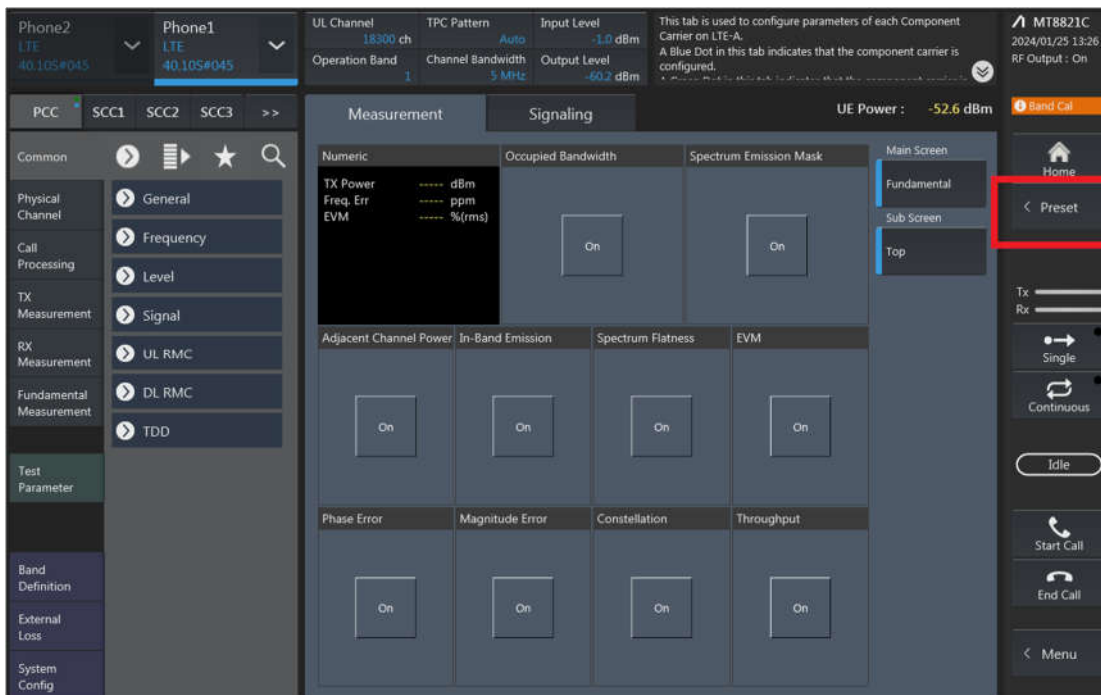


LTE Uplink and Downlink Carrier Aggregation configurations:

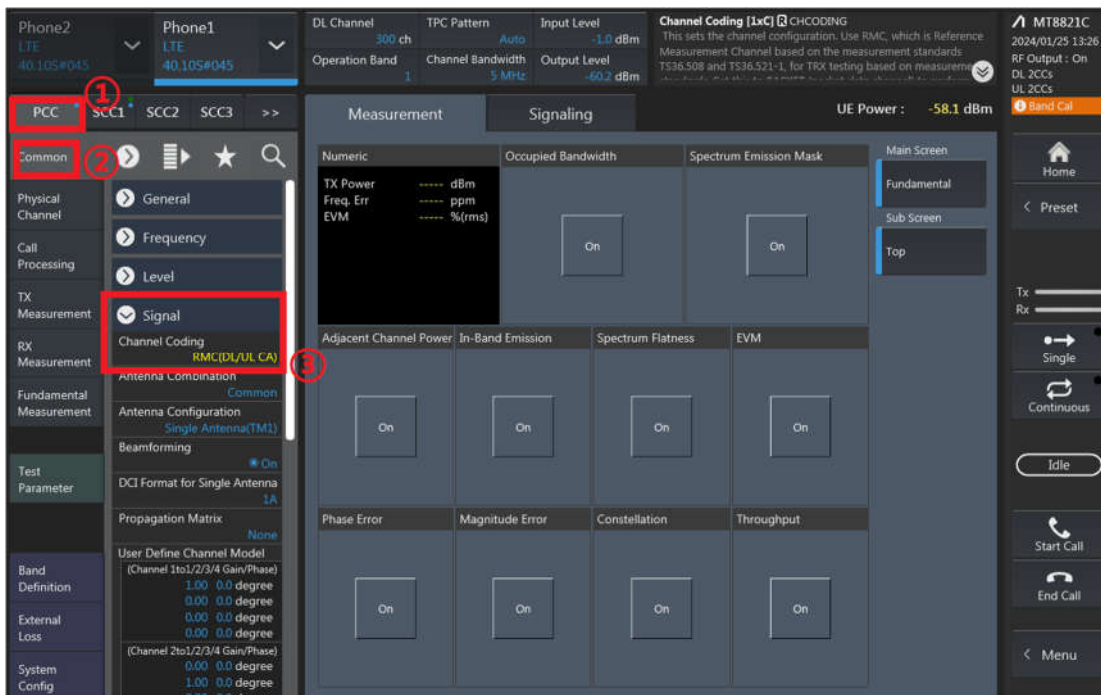
1. Change the Scenario in the Configuration of LTE Signaling and Preset.



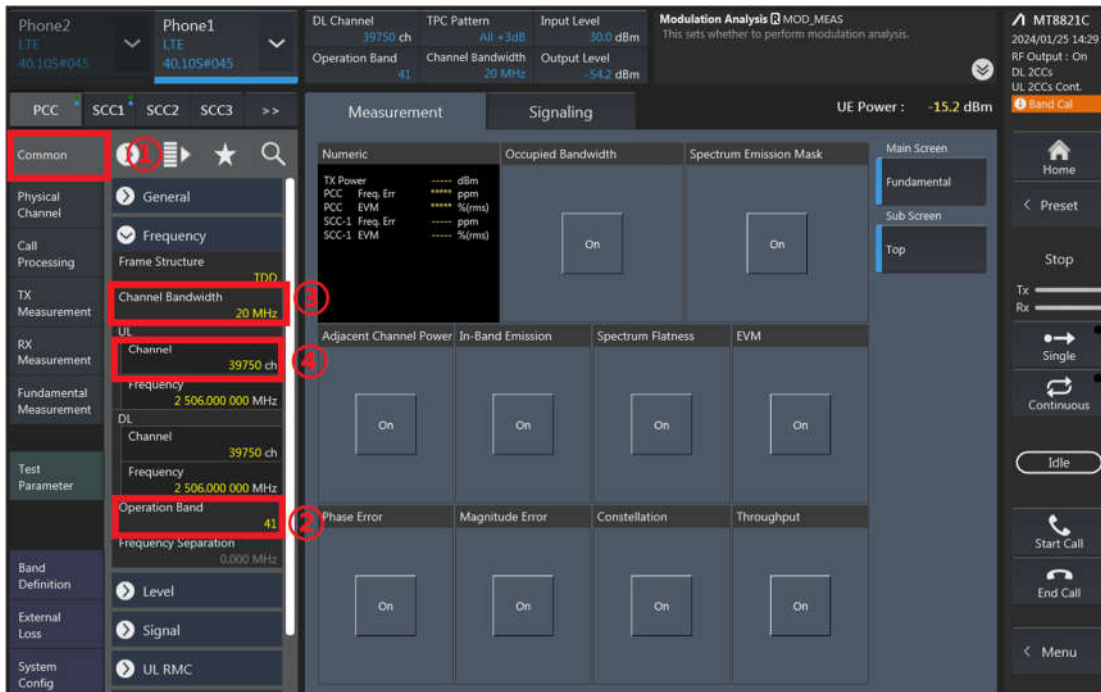
2. If Select "RMC (DL/UL CA)" for Uplink Carrier Aggregation;
If Select "RMC (DL CA)" for Downlink Carrier Aggregation.

For example, Uplink Carrier Aggregation:

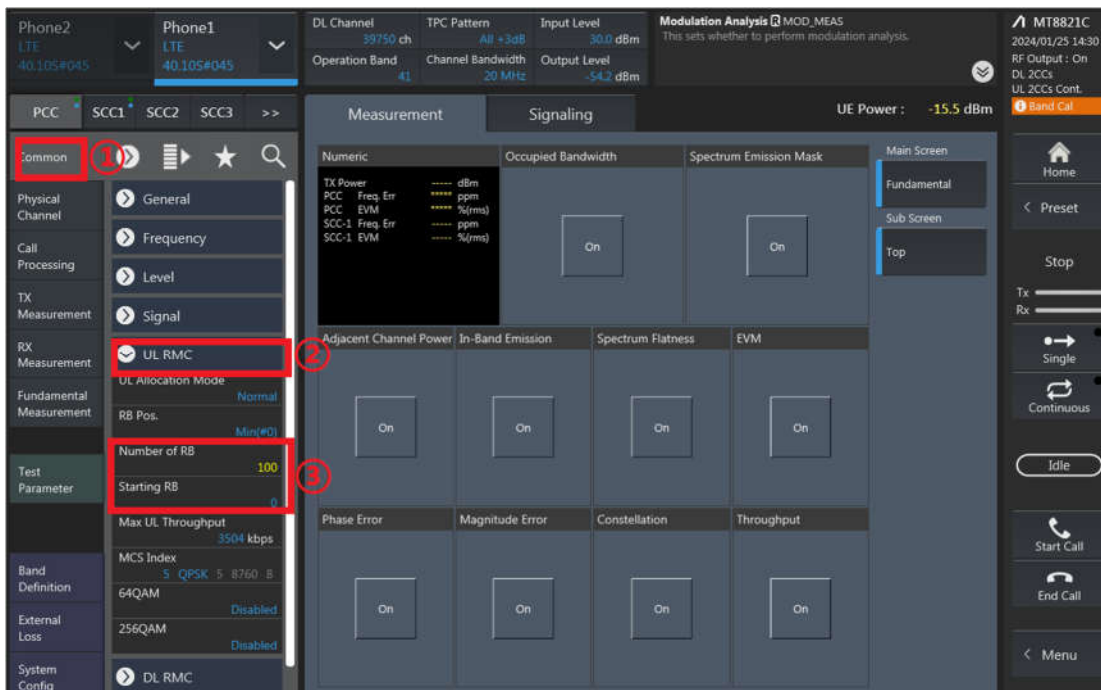
Detailed operation: PCC → Common → Signal → Channel Coding → Select 【RMC (DL/UL CA)】



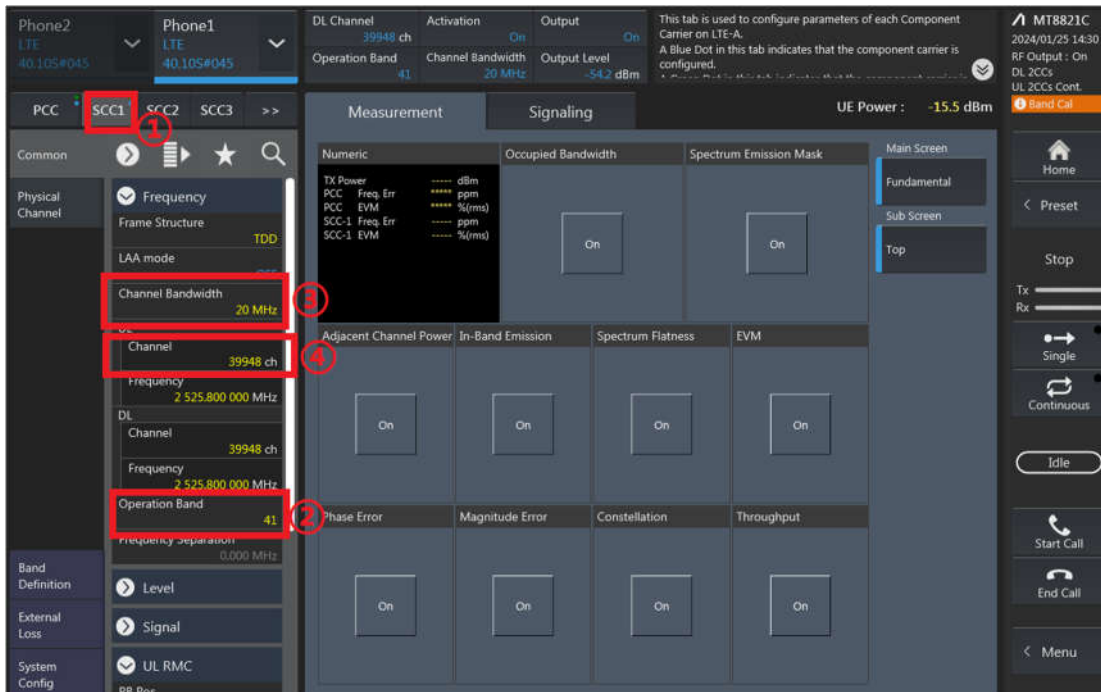
- PCC parameter Settings: on the screen, and then select the PCC tab and Set operating band, BW, channel and RB configurations for PCC;



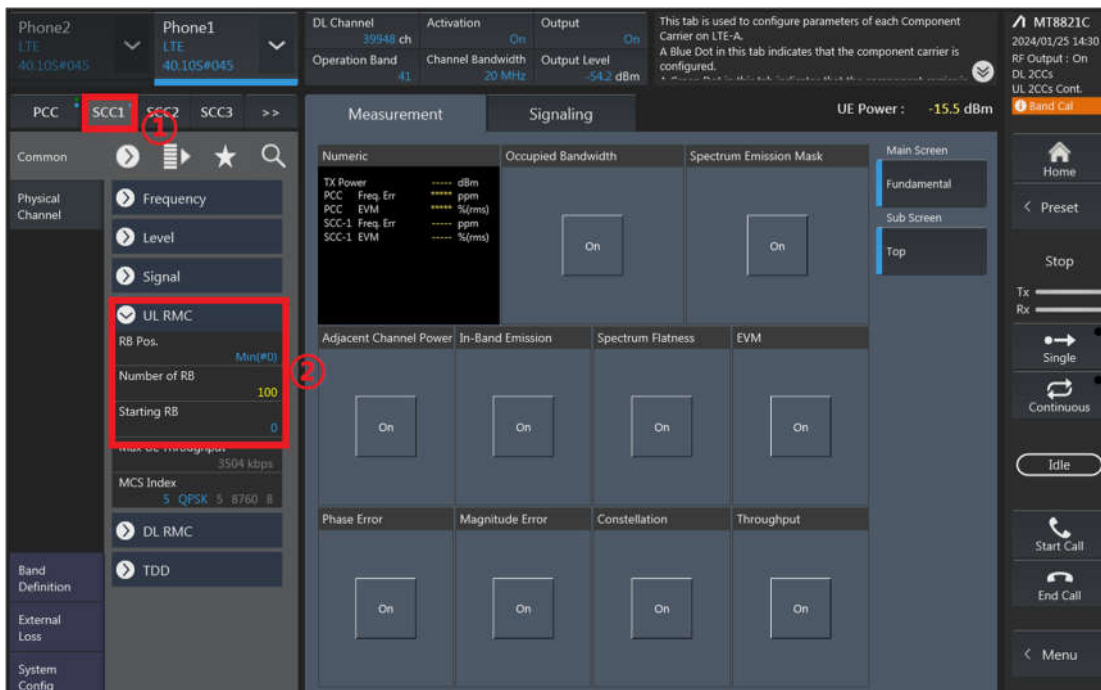
RB configurations (Number of RB / Starting RB) for PCC;



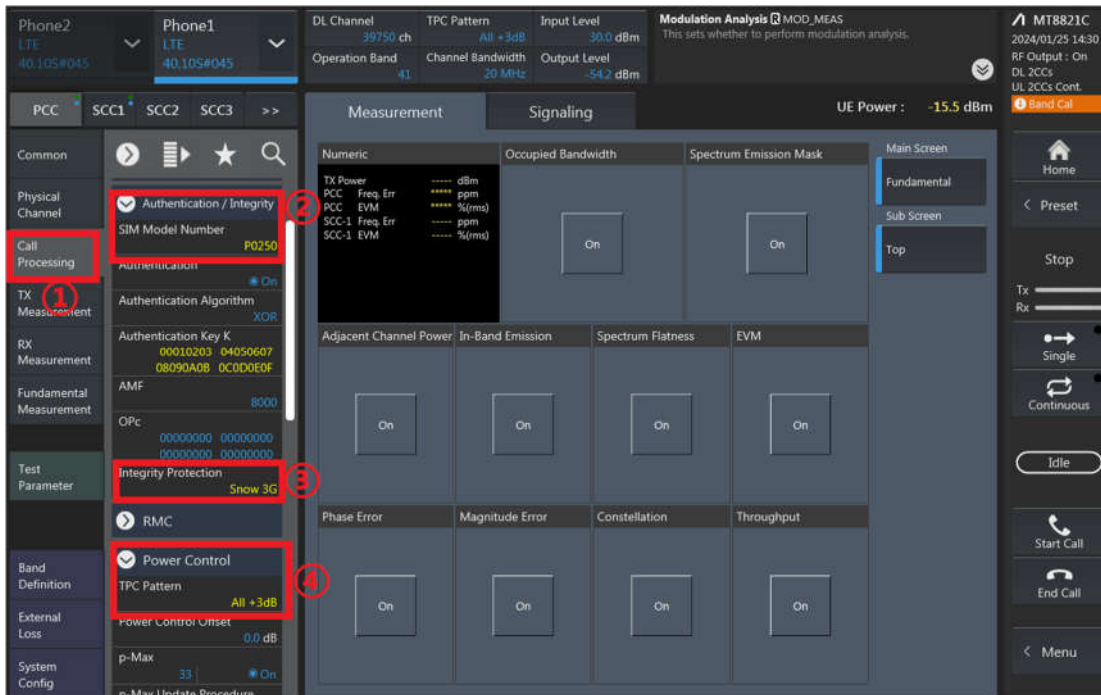
4. SCC parameter Settings: Select the SCC1 tab, Set operating band, BW, channel, and RB configurations for SCC1;



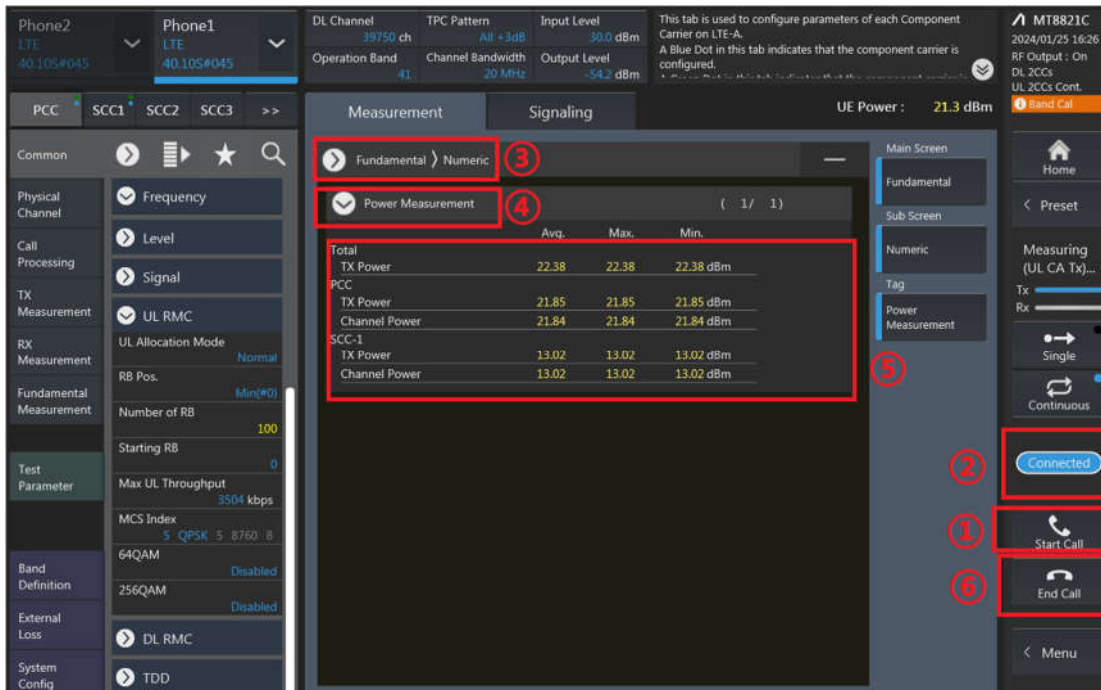
RB configurations (Number of RB / Starting RB) for SCC1;



5. Select the PCC tab, then set “SIM Model Number” and select max power;



6. Click the “Connect” button at the Right of the screen, if necessary, turn the Airplane mode on/off in the DUT



7. The inter-band ULCA test method is similar to intra-band ULCA, and DLCA test method is similar to intra-band ULCA too.



UL CA_Full&Default Power Mode

ANT 0 Other PA

CA_7C								
Combination 20MHz+20MHz (100RB+100RB)								
PCC Channel	SCC Channel	Modulation	PCC		SCC		Measured Power (dBm)	Tune up Power (dBm)
			RB Size	RB offset	RB Size	RB offset		
20850	21048	QPSK	1	99	1	0	24.05	25.70
21100	21298	QPSK	1	99	1	0	24.19	25.70
21350	21152	QPSK	1	0	1	99	24.08	25.70

ANT 1 Other PA

CA_7C								
Combination 20MHz+20MHz (100RB+100RB)								
PCC Channel	SCC Channel	Modulation	PCC		SCC		Measured Power (dBm)	Tune up Power (dBm)
			RB Size	RB offset	RB Size	RB offset		
20850	21048	QPSK	1	99	1	0	24.35	25.70
21100	21298	QPSK	1	99	1	0	24.48	25.70
21350	21152	QPSK	1	0	1	99	24.31	25.70

ANT 5 Main PA

CA_7C								
Combination 20MHz+20MHz (100RB+100RB)								
PCC Channel	SCC Channel	Modulation	PCC		SCC		Measured Power (dBm)	Tune up Power (dBm)
			RB Size	RB offset	RB Size	RB offset		
20850	21048	QPSK	1	99	1	0	24.11	25.70
21100	21298	QPSK	1	99	1	0	24.15	25.70
21350	21152	QPSK	1	0	1	99	24.13	25.70

ANT 6 Main PA

CA_7C								
Combination 20MHz+20MHz (100RB+100RB)								
PCC Channel	SCC Channel	Modulation	PCC		SCC		Measured Power (dBm)	Tune up Power (dBm)
			RB Size	RB offset	RB Size	RB offset		
20850	21048	QPSK	1	99	1	0	23.75	25.70
21100	21298	QPSK	1	99	1	0	23.79	25.70
21350	21152	QPSK	1	0	1	99	23.85	25.70

ANT 0 Other PA

CA_38C								
Combination 20MHz+20MHz (100RB+100RB)								
PCC Channel	SCC Channel	Modulation	PCC		SCC		Measured Power (dBm)	Tune up Power (dBm)
			RB Size	RB offset	RB Size	RB offset		
37850	38048	QPSK	1	99	1	0	24.73	25.70
37901	38099	QPSK	1	99	1	0	24.92	25.70
38150	37952	QPSK	1	0	1	99	24.75	25.70

ANT 1 Other PA

CA_38C								
Combination 20MHz+20MHz (100RB+100RB)								
PCC Channel	SCC Channel	Modulation	PCC		SCC		Measured Power (dBm)	Tune up Power (dBm)
			RB Size	RB offset	RB Size	RB offset		
37850	38048	QPSK	1	99	1	0	24.71	25.70
37901	38099	QPSK	1	99	1	0	24.70	25.70
38150	37952	QPSK	1	0	1	99	24.63	25.70

ANT 5 Main PA

CA_38C								
Combination 20MHz+20MHz (100RB+100RB)								
PCC Channel	SCC Channel	Modulation	PCC		SCC		Measured Power (dBm)	Tune up Power (dBm)
			RB Size	RB offset	RB Size	RB offset		
37850	38048	QPSK	1	99	1	0	24.15	25.70
37901	38099	QPSK	1	99	1	0	24.21	25.70
38150	37952	QPSK	1	0	1	99	24.13	25.70

ANT 6 Main PA

CA_38C								
Combination 20MHz+20MHz (100RB+100RB)								
PCC Channel	SCC Channel	Modulation	PCC		SCC		Measured Power (dBm)	Tune up Power (dBm)
			RB Size	RB offset	RB Size	RB offset		
37850	38048	QPSK	1	99	1	0	23.89	25.50
37901	38099	QPSK	1	99	1	0	23.95	25.50
38150	37952	QPSK	1	0	1	99	23.85	25.50

ANT 0 Other PA

CA_41C								
Combination 20MHz+20MHz (100RB+100RB)								
PCC Channel	SCC Channel	Modulation	PCC		SCC		Measured Power (dBm)	Tune up Power (dBm)
			RB Size	RB offset	RB Size	RB offset		
39750	39948	QPSK	1	99	1	0	24.85	25.70
40185	40383	QPSK	1	99	1	0	24.81	25.70
40620	40818	QPSK	1	99	1	0	24.99	25.70
41055	41253	QPSK	1	99	1	0	24.91	25.70
41490	41292	QPSK	1	0	1	99	24.93	25.70

ANT 1 Other PA

CA_41C								
Combination 20MHz+20MHz (100RB+100RB)								
PCC Channel	SCC Channel	Modulation	PCC		SCC		Measured Power (dBm)	Tune up Power (dBm)
			RB Size	RB offset	RB Size	RB offset		
39750	39948	QPSK	1	99	1	0	24.63	25.70
40185	40383	QPSK	1	99	1	0	24.51	25.70
40620	40818	QPSK	1	99	1	0	24.75	25.70
41055	41253	QPSK	1	99	1	0	24.31	25.70
41490	41292	QPSK	1	0	1	99	24.43	25.70

ANT 5 Main PA

CA_41C								
Combination 20MHz+20MHz (100RB+100RB)								
PCC Channel	SCC Channel	Modulation	PCC		SCC		Measured Power (dBm)	Tune up Power (dBm)
			RB Size	RB offset	RB Size	RB offset		
39750	39948	QPSK	1	99	1	0	24.61	25.70
40185	40383	QPSK	1	99	1	0	24.65	25.70
40620	40818	QPSK	1	99	1	0	24.86	25.70
41055	41253	QPSK	1	99	1	0	24.75	25.70
41490	41292	QPSK	1	0	1	99	24.71	25.70

ANT 6 Main PA

CA_41C								
Combination 20MHz+20MHz (100RB+100RB)								
PCC Channel	SCC Channel	Modulation	PCC		SCC		Measured Power (dBm)	Tune up Power (dBm)
			RB Size	RB offset	RB Size	RB offset		
39750	39948	QPSK	1	99	1	0	23.81	25.50
40185	40383	QPSK	1	99	1	0	23.7	25.50
40620	40818	QPSK	1	99	1	0	23.89	25.50
41055	41253	QPSK	1	99	1	0	23.85	25.50
41490	41292	QPSK	1	0	1	99	23.81	25.50



UL CA_Reduced Power Mode for DS11

ANT 0		Other PA									
CA_7C											
Combination 20MHz+20MHz (100RB+100RB)											
PCC Channel	SCC Channel	Modulation	PCC		SCC		Measured Power (dBm)	Tune up Power (dBm)			
			RB Size	RB offset	RB Size	RB offset					
20850	21048	QPSK	1	99	1	0	22.71	23.70			
21100	21298	QPSK	1	99	1	0	22.78	23.70			
21350	21152	QPSK	1	0	1	99	22.69	23.70			

ANT 1		Other PA									
CA_7C											
Combination 20MHz+20MHz (100RB+100RB)											
PCC Channel	SCC Channel	Modulation	PCC		SCC		Measured Power (dBm)	Tune up Power (dBm)			
			RB Size	RB offset	RB Size	RB offset					
20850	21048	QPSK	1	99	1	0	20.85	21.70			
21100	21298	QPSK	1	99	1	0	21.03	21.70			
21350	21152	QPSK	1	0	1	99	20.81	21.70			

ANT 5		Main PA									
CA_7C											
Combination 20MHz+20MHz (100RB+100RB)											
PCC Channel	SCC Channel	Modulation	PCC		SCC		Measured Power (dBm)	Tune up Power (dBm)			
			RB Size	RB offset	RB Size	RB offset					
20850	21048	QPSK	1	99	1	0	16.15	17.20			
21100	21298	QPSK	1	99	1	0	16.21	17.20			
21350	21152	QPSK	1	0	1	99	16.18	17.20			

ANT 6		Main PA									
CA_7C											
Combination 20MHz+20MHz (100RB+100RB)											
PCC Channel	SCC Channel	Modulation	PCC		SCC		Measured Power (dBm)	Tune up Power (dBm)			
			RB Size	RB offset	RB Size	RB offset					
20850	21048	QPSK	1	99	1	0	19.21	21.20			
21100	21298	QPSK	1	99	1	0	19.25	21.20			
21350	21152	QPSK	1	0	1	99	19.23	21.20			

ANT 1		Other PA									
CA_38C											
Combination 20MHz+20MHz (100RB+100RB)											
PCC Channel	SCC Channel	Modulation	PCC		SCC		Measured Power (dBm)	Tune up Power (dBm)			
			RB Size	RB offset	RB Size	RB offset					
37850	38048	QPSK	1	99	1	0	21.85	22.70			
37901	38099	QPSK	1	99	1	0	21.89	22.70			
38150	37952	QPSK	1	0	1	99	21.76	22.70			

ANT 5		Main PA									
CA_38C											
Combination 20MHz+20MHz (100RB+100RB)											
PCC Channel	SCC Channel	Modulation	PCC		SCC		Measured Power (dBm)	Tune up Power (dBm)			
			RB Size	RB offset	RB Size	RB offset					
37850	38048	QPSK	1	99	1	0	18.00	18.70			
37901	38099	QPSK	1	99	1	0	18.08	18.70			
38150	37952	QPSK	1	0	1	99	18.01	18.70			

ANT 6		Main PA									
CA_38C											
Combination 20MHz+20MHz (100RB+100RB)											
PCC Channel	SCC Channel	Modulation	PCC		SCC		Measured Power (dBm)	Tune up Power (dBm)			
			RB Size	RB offset	RB Size	RB offset					
37850	38048	QPSK	1	99	1	0	20.71	22.50			
37901	38099	QPSK	1	99	1	0	20.75	22.50			
38150	37952	QPSK	1	0	1	99	20.73	22.50			

ANT 1		Other PA									
CA_41C											
Combination 20MHz+20MHz (100RB+100RB)											
PCC Channel	SCC Channel	Modulation	PCC		SCC		Measured Power (dBm)	Tune up Power (dBm)			
			RB Size	RB offset	RB Size	RB offset					
39750	39948	QPSK	1	99	1	0	21.81	22.70			
40185	40383	QPSK	1	99	1	0	21.73	22.70			
40620	40818	QPSK	1	99	1	0	22.03	22.70			
41055	41253	QPSK	1	99	1	0	21.52	22.70			
41490	41292	QPSK	1	0	1	99	21.61	22.70			

ANT 5		Main PA									
CA_41C											
Combination 20MHz+20MHz (100RB+100RB)											
PCC Channel	SCC Channel	Modulation	PCC		SCC		Measured Power (dBm)	Tune up Power (dBm)			
			RB Size	RB offset	RB Size	RB offset					
39750	39948	QPSK	1	99	1	0	17.81	18.70			
40185	40383	QPSK	1	99	1	0	17.75	18.70			
40620	40818	QPSK	1	99	1	0	18.08	18.70			
41055	41253	QPSK	1	99	1	0	17.81	18.70			
41490	41292	QPSK	1	0	1	99	17.79	18.70			

ANT 6		Main PA									
CA_41C											
Combination 20MHz+20MHz (100RB+100RB)											
PCC Channel	SCC Channel	Modulation	PCC		SCC		Measured Power (dBm)	Tune up Power (dBm)			
			RB Size	RB offset	RB Size	RB offset					
39750	39948	QPSK	1	99	1	0	20.58	22.50			
40185	40383	QPSK	1	99	1	0	20.64	22.50			
40620	40818	QPSK	1	99	1	0	20.88	22.50			
41055	41253	QPSK	1	99	1	0	20.71	22.50			
41490	41292	QPSK	1	0	1	99	20.56	22.50			



UL CA_Reduced Power Mode for DSI2

ANT 0		Other PA		CA_7C							
Combination 20MHz+20MHz (100RB+100RB)											
PCC Channel	SCC Channel	Modulation	PCC		SCC		Measured Power (dBm)	Tune up Power (dBm)			
			RB Size	RB offset	RB Size	RB offset					
20850	21048	QPSK	1	99	1	0	23.15	24.20			
21100	21298	QPSK	1	99	1	0	23.25	24.20			
21350	21152	QPSK	1	0	1	99	23.06	24.20			

ANT 1		Other PA		CA_7C							
Combination 20MHz+20MHz (100RB+100RB)											
PCC Channel	SCC Channel	Modulation	PCC		SCC		Measured Power (dBm)	Tune up Power (dBm)			
			RB Size	RB offset	RB Size	RB offset					
20850	21048	QPSK	1	99	1	0	21.31	22.20			
21100	21298	QPSK	1	99	1	0	21.35	22.20			
21350	21152	QPSK	1	0	1	99	21.25	22.20			

ANT 5		Main PA		CA_7C							
Combination 20MHz+20MHz (100RB+100RB)											
PCC Channel	SCC Channel	Modulation	PCC		SCC		Measured Power (dBm)	Tune up Power (dBm)			
			RB Size	RB offset	RB Size	RB offset					
20850	21048	QPSK	1	99	1	0	20.78	21.70			
21100	21298	QPSK	1	99	1	0	20.83	21.70			
21350	21152	QPSK	1	0	1	99	20.81	21.70			

ANT 6		Main PA		CA_7C							
Combination 20MHz+20MHz (100RB+100RB)											
PCC Channel	SCC Channel	Modulation	PCC		SCC		Measured Power (dBm)	Tune up Power (dBm)			
			RB Size	RB offset	RB Size	RB offset					
20850	21048	QPSK	1	99	1	0	19.21	21.20			
21100	21298	QPSK	1	99	1	0	19.25	21.20			
21350	21152	QPSK	1	0	1	99	19.23	21.20			

ANT 1		Other PA		CA_38C							
Combination 20MHz+20MHz (100RB+100RB)											
PCC Channel	SCC Channel	Modulation	PCC		SCC		Measured Power (dBm)	Tune up Power (dBm)			
			RB Size	RB offset	RB Size	RB offset					
37850	38048	QPSK	1	99	1	0	22.75	23.70			
37901	38099	QPSK	1	99	1	0	22.86	23.70			
38150	37952	QPSK	1	0	1	99	22.69	23.70			

ANT 5		Main PA		CA_38C							
Combination 20MHz+20MHz (100RB+100RB)											
PCC Channel	SCC Channel	Modulation	PCC		SCC		Measured Power (dBm)	Tune up Power (dBm)			
			RB Size	RB offset	RB Size	RB offset					
37850	38048	QPSK	1	99	1	0	22.76	23.70			
37901	38099	QPSK	1	99	1	0	22.81	23.70			
38150	37952	QPSK	1	0	1	99	22.57	23.70			

ANT 6		Main PA		CA_38C							
Combination 20MHz+20MHz (100RB+100RB)											
PCC Channel	SCC Channel	Modulation	PCC		SCC		Measured Power (dBm)	Tune up Power (dBm)			
			RB Size	RB offset	RB Size	RB offset					
37850	38048	QPSK	1	99	1	0	21.75	23.50			
37901	38099	QPSK	1	99	1	0	21.89	23.50			
38150	37952	QPSK	1	0	1	99	21.71	23.50			

ANT 1		Other PA		CA_41C							
Combination 20MHz+20MHz (100RB+100RB)											
PCC Channel	SCC Channel	Modulation	PCC		SCC		Measured Power (dBm)	Tune up Power (dBm)			
			RB Size	RB offset	RB Size	RB offset					
39750	39948	QPSK	1	99	1	0	22.78	23.70			
40185	40383	QPSK	1	99	1	0	22.8	23.70			
40620	40818	QPSK	1	99	1	0	23.05	23.70			
41055	41253	QPSK	1	99	1	0	22.69	23.70			
41490	41292	QPSK	1	0	1	99	22.61	23.70			

ANT 5		Main PA		CA_41C							
Combination 20MHz+20MHz (100RB+100RB)											
PCC Channel	SCC Channel	Modulation	PCC		SCC		Measured Power (dBm)	Tune up Power (dBm)			
			RB Size	RB offset	RB Size	RB offset					
39750	39948	QPSK	1	99	1	0	22.85	23.70			
40185	40383	QPSK	1	99	1	0	22.83	23.70			
40620	40818	QPSK	1	99	1	0	23.15	23.70			
41055	41253	QPSK	1	99	1	0	22.86	23.70			
41490	41292	QPSK	1	0	1	99	22.81	23.70			

ANT 6		Main PA		CA_41C							
Combination 20MHz+20MHz (100RB+100RB)											
PCC Channel	SCC Channel	Modulation	PCC		SCC		Measured Power (dBm)	Tune up Power (dBm)			
			RB Size	RB offset	RB Size	RB offset					
39750	39948	QPSK	1	99	1	0	21.05	23.00			
40185	40383	QPSK	1	99	1	0	21.14	23.00			
40620	40818	QPSK	1	99	1	0	21.45	23.00			
41055	41253	QPSK	1	99	1	0	21.21	23.00			
41490	41292	QPSK	1	0	1	99	21.14	23.00			



UL CA_Reduced Power Mode for DSI3

ANT 0		Other PA		CA_7C							
Combination 20MHz+20MHz (100RB+100RB)											
PCC Channel	SCC Channel	Modulation	PCC		SCC		Measured Power (dBm)	Tune up Power (dBm)			
			RB Size	RB offset	RB Size	RB offset					
20850	21048	QPSK	1	99	1	0	23.05	24.70			
21100	21298	QPSK	1	99	1	0	23.14	24.70			
21350	21152	QPSK	1	0	1	99	23.01	24.70			

ANT 1		Other PA		CA_7C							
Combination 20MHz+20MHz (100RB+100RB)											
PCC Channel	SCC Channel	Modulation	PCC		SCC		Measured Power (dBm)	Tune up Power (dBm)			
			RB Size	RB offset	RB Size	RB offset					
20850	21048	QPSK	1	99	1	0	21.31	22.20			
21100	21298	QPSK	1	99	1	0	21.35	22.20			
21350	21152	QPSK	1	0	1	99	21.25	22.20			

ANT 1		Other PA		CA_38C							
Combination 20MHz+20MHz (100RB+100RB)											
PCC Channel	SCC Channel	Modulation	PCC		SCC		Measured Power (dBm)	Tune up Power (dBm)			
			RB Size	RB offset	RB Size	RB offset					
37850	38048	QPSK	1	99	1	0	22.75	23.70			
37901	38099	QPSK	1	99	1	0	22.86	23.70			
38150	37952	QPSK	1	0	1	99	22.69	23.70			

ANT 1		Other PA		CA_41C							
Combination 20MHz+20MHz (100RB+100RB)											
PCC Channel	SCC Channel	Modulation	PCC		SCC		Measured Power (dBm)	Tune up Power (dBm)			
			RB Size	RB offset	RB Size	RB offset					
39750	39948	QPSK	1	99	1	0	22.79	23.70			
40185	40383	QPSK	1	99	1	0	22.8	23.70			
40620	40818	QPSK	1	99	1	0	23.05	23.70			
41055	41253	QPSK	1	99	1	0	22.69	23.70			
41490	41292	QPSK	1	0	1	99	22.61	23.70			



UL CA_Reduced Power Mode for DS14

ANT 0 Other PA

CA_7C								
Combination 20MHz+20MHz (100RB+100RB)								
PCC Channel	SCC Channel	Modulation	PCC		SCC		Measured Power (dBm)	Tune up Power (dBm)
			RB Size	RB offset	RB Size	RB offset		
20850	21048	QPSK	1	99	1	0	15.71	16.70
21100	21298	QPSK	1	99	1	0	15.85	16.70
21350	21152	QPSK	1	0	1	99	15.21	16.70

ANT 0 Other PA

CA_38C								
Combination 20MHz+20MHz (100RB+100RB)								
PCC Channel	SCC Channel	Modulation	PCC		SCC		Measured Power (dBm)	Tune up Power (dBm)
			RB Size	RB offset	RB Size	RB offset		
37850	38048	QPSK	1	99	1	0	18.85	19.70
37901	38099	QPSK	1	99	1	0	19.01	19.70
38150	37952	QPSK	1	0	1	99	18.76	19.70

ANT 0 Other PA

CA_41C								
Combination 20MHz+20MHz (100RB+100RB)								
PCC Channel	SCC Channel	Modulation	PCC		SCC		Measured Power (dBm)	Tune up Power (dBm)
			RB Size	RB offset	RB Size	RB offset		
39750	39948	QPSK	1	99	1	0	18.35	19.20
40185	40383	QPSK	1	99	1	0	18.29	19.20
40620	40818	QPSK	1	99	1	0	18.55	19.20
41055	41253	QPSK	1	99	1	0	18.36	19.20
41490	41292	QPSK	1	0	1	99	18.31	19.20

ANT 1 Other PA

CA_7C								
Combination 20MHz+20MHz (100RB+100RB)								
PCC Channel	SCC Channel	Modulation	PCC		SCC		Measured Power (dBm)	Tune up Power (dBm)
			RB Size	RB offset	RB Size	RB offset		
20850	21048	QPSK	1	99	1	0	20.85	21.70
21100	21298	QPSK	1	99	1	0	21.03	21.70
21350	21152	QPSK	1	0	1	99	20.81	21.70

ANT 1 Other PA

CA_38C								
Combination 20MHz+20MHz (100RB+100RB)								
PCC Channel	SCC Channel	Modulation	PCC		SCC		Measured Power (dBm)	Tune up Power (dBm)
			RB Size	RB offset	RB Size	RB offset		
37850	38048	QPSK	1	99	1	0	21.85	22.70
37901	38099	QPSK	1	99	1	0	21.89	22.70
38150	37952	QPSK	1	0	1	99	21.76	22.70

ANT 1 Other PA

CA_41C								
Combination 20MHz+20MHz (100RB+100RB)								
PCC Channel	SCC Channel	Modulation	PCC		SCC		Measured Power (dBm)	Tune up Power (dBm)
			RB Size	RB offset	RB Size	RB offset		
39750	39948	QPSK	1	99	1	0	21.35	22.20
40185	40383	QPSK	1	99	1	0	21.17	22.20
40620	40818	QPSK	1	99	1	0	21.46	22.20
41055	41253	QPSK	1	99	1	0	20.91	22.20
41490	41292	QPSK	1	0	1	99	21.03	22.20

ANT 5 Main PA

CA_7C								
Combination 20MHz+20MHz (100RB+100RB)								
PCC Channel	SCC Channel	Modulation	PCC		SCC		Measured Power (dBm)	Tune up Power (dBm)
			RB Size	RB offset	RB Size	RB offset		
20850	21048	QPSK	1	99	1	0	16.15	17.20
21100	21298	QPSK	1	99	1	0	16.21	17.20
21350	21152	QPSK	1	0	1	99	16.18	17.20

ANT 5 Main PA

CA_38C								
Combination 20MHz+20MHz (100RB+100RB)								
PCC Channel	SCC Channel	Modulation	PCC		SCC		Measured Power (dBm)	Tune up Power (dBm)
			RB Size	RB offset	RB Size	RB offset		
37850	38048	QPSK	1	99	1	0	18.00	18.70
37901	38099	QPSK	1	99	1	0	18.08	18.70
38150	37952	QPSK	1	0	1	99	18.01	18.70

ANT 5 Main PA

CA_41C								
Combination 20MHz+20MHz (100RB+100RB)								
PCC Channel	SCC Channel	Modulation	PCC		SCC		Measured Power (dBm)	Tune up Power (dBm)
			RB Size	RB offset	RB Size	RB offset		
39750	39948	QPSK	1	99	1	0	17.81	18.70
40185	40383	QPSK	1	99	1	0	17.75	18.70
40620	40818	QPSK	1	99	1	0	18.08	18.70
41055	41253	QPSK	1	99	1	0	17.81	18.70
41490	41292	QPSK	1	0	1	99	17.79	18.70

ANT 6 Main PA

CA_7C								
Combination 20MHz+20MHz (100RB+100RB)								
PCC Channel	SCC Channel	Modulation	PCC		SCC		Measured Power (dBm)	Tune up Power (dBm)
			RB Size	RB offset	RB Size	RB offset		
20850	21048	QPSK	1	99	1	0	15.15	17.20
21100	21298	QPSK	1	99	1	0	15.21	17.20
21350	21152	QPSK	1	0	1	99	15.11	17.20

ANT 6 Main PA

CA_38C								
Combination 20MHz+20MHz (100RB+100RB)								
PCC Channel	SCC Channel	Modulation	PCC		SCC		Measured Power (dBm)	Tune up Power (dBm)
			RB Size	RB offset	RB Size	RB offset		
37850	38048	QPSK	1	99	1	0	18.79	20.50
37901	38099	QPSK	1	99	1	0	18.86	20.50
38150	37952	QPSK	1	0	1	99	18.81	20.50

ANT 6 Main PA

CA_41C								
Combination 20MHz+20MHz (100RB+100RB)								
PCC Channel	SCC Channel	Modulation	PCC		SCC		Measured Power (dBm)	Tune up Power (dBm)
			RB Size	RB offset	RB Size	RB offset		
39750	39948	QPSK	1	99	1	0	17.85	19.50
40185	40383	QPSK	1	99	1	0	17.71	19.50
40620	40818	QPSK	1	99	1	0	18.01	19.50
41055	41253	QPSK	1	99	1	0	17.92	19.50
41490	41292	QPSK	1	0	1	99	17.85	19.50



UL CA_Reduced Power Mode for DSI5

ANT 0		Other PA		CA_7C							
Combination 20MHz+20MHz (100RB+100RB)											
PCC Channel	SCC Channel	Modulation	PCC		SCC		Measured Power (dBm)	Tune up Power (dBm)			
			RB Size	RB offset	RB Size	RB offset					
20850	21048	QPSK	1	99	1	0	24.05	24.50			
21100	21298	QPSK	1	99	1	0	24.19	24.50			
21350	21162	QPSK	1	0	1	99	24.08	24.50			

ANT 1		Other PA		CA_7C							
Combination 20MHz+20MHz (100RB+100RB)											
PCC Channel	SCC Channel	Modulation	PCC		SCC		Measured Power (dBm)	Tune up Power (dBm)			
			RB Size	RB offset	RB Size	RB offset					
20850	21048	QPSK	1	99	1	0	18.71	19.70			
21100	21298	QPSK	1	99	1	0	18.76	19.70			
21350	21162	QPSK	1	0	1	99	18.61	19.70			

ANT 5		Main PA		CA_7C							
Combination 20MHz+20MHz (100RB+100RB)											
PCC Channel	SCC Channel	Modulation	PCC		SCC		Measured Power (dBm)	Tune up Power (dBm)			
			RB Size	RB offset	RB Size	RB offset					
20850	21048	QPSK	1	99	1	0	15.31	16.20			
21100	21298	QPSK	1	99	1	0	15.35	16.20			
21350	21162	QPSK	1	0	1	99	15.32	16.20			

ANT 6		Main PA		CA_7C							
Combination 20MHz+20MHz (100RB+100RB)											
PCC Channel	SCC Channel	Modulation	PCC		SCC		Measured Power (dBm)	Tune up Power (dBm)			
			RB Size	RB offset	RB Size	RB offset					
20850	21048	QPSK	1	99	1	0	18.25	20.20			
21100	21298	QPSK	1	99	1	0	18.31	20.20			
21350	21162	QPSK	1	0	1	99	18.25	20.20			

ANT 1		Other PA		CA_38C							
Combination 20MHz+20MHz (100RB+100RB)											
PCC Channel	SCC Channel	Modulation	PCC		SCC		Measured Power (dBm)	Tune up Power (dBm)			
			RB Size	RB offset	RB Size	RB offset					
37850	38048	QPSK	1	99	1	0	18.81	19.70			
37901	38099	QPSK	1	99	1	0	18.89	19.70			
38150	37952	QPSK	1	0	1	99	18.75	19.70			

ANT 5		Main PA		CA_38C							
Combination 20MHz+20MHz (100RB+100RB)											
PCC Channel	SCC Channel	Modulation	PCC		SCC		Measured Power (dBm)	Tune up Power (dBm)			
			RB Size	RB offset	RB Size	RB offset					
37850	38048	QPSK	1	99	1	0	17.25	18.20			
37901	38099	QPSK	1	99	1	0	17.35	18.20			
38150	37952	QPSK	1	0	1	99	17.31	18.20			

ANT 6		Main PA		CA_38C							
Combination 20MHz+20MHz (100RB+100RB)											
PCC Channel	SCC Channel	Modulation	PCC		SCC		Measured Power (dBm)	Tune up Power (dBm)			
			RB Size	RB offset	RB Size	RB offset					
37850	38048	QPSK	1	99	1	0	18.41	20.00			
37901	38099	QPSK	1	99	1	0	18.45	20.00			
38150	37952	QPSK	1	0	1	99	18.35	20.00			

ANT 1		Other PA		CA_41C							
Combination 20MHz+20MHz (100RB+100RB)											
PCC Channel	SCC Channel	Modulation	PCC		SCC		Measured Power (dBm)	Tune up Power (dBm)			
			RB Size	RB offset	RB Size	RB offset					
39750	39948	QPSK	1	99	1	0	18.71	19.70			
40185	40383	QPSK	1	99	1	0	18.75	19.70			
40620	40818	QPSK	1	99	1	0	18.91	19.70			
41055	41253	QPSK	1	99	1	0	18.51	19.70			
41490	41292	QPSK	1	0	1	99	18.43	19.70			

ANT 5		Main PA		CA_41C							
Combination 20MHz+20MHz (100RB+100RB)											
PCC Channel	SCC Channel	Modulation	PCC		SCC		Measured Power (dBm)	Tune up Power (dBm)			
			RB Size	RB offset	RB Size	RB offset					
39750	39948	QPSK	1	99	1	0	17.21	18.20			
40185	40383	QPSK	1	99	1	0	17.25	18.20			
40620	40818	QPSK	1	99	1	0	17.56	18.20			
41055	41253	QPSK	1	99	1	0	17.31	18.20			
41490	41292	QPSK	1	0	1	99	17.29	18.20			

ANT 6		Main PA		CA_41C							
Combination 20MHz+20MHz (100RB+100RB)											
PCC Channel	SCC Channel	Modulation	PCC		SCC		Measured Power (dBm)	Tune up Power (dBm)			
			RB Size	RB offset	RB Size	RB offset					
39750	39948	QPSK	1	99	1	0	19.21	21.00			
40185	40383	QPSK	1	99	1	0	19.23	21.00			
40620	40818	QPSK	1	99	1	0	19.42	21.00			
41055	41253	QPSK	1	99	1	0	19.35	21.00			
41490	41292	QPSK	1	0	1	99	19.18	21.00			



UL CA_Reduced Power Mode for DSI6

ANT 0		Other PA		CA_7C						
Combination 20MHz+20MHz (100RB+100RB)										
PCC Channel	SCC Channel	Modulation	PCC		SCC		Measured Power (dBm)	Tune up Power (dBm)		
			RB Size	RB offset	RB Size	RB offset				
20850	21048	QPSK	1	99	1	0	22.35	23.20		
21100	21298	QPSK	1	99	1	0	22.45	23.20		
21350	21152	QPSK	1	0	1	99	22.19	23.20		

ANT 0		Other PA		CA_38C						
Combination 20MHz+20MHz (100RB+100RB)										
PCC Channel	SCC Channel	Modulation	PCC		SCC		Measured Power (dBm)	Tune up Power (dBm)		
			RB Size	RB offset	RB Size	RB offset				
37850	38048	QPSK	1	99	1	0	23.65	24.70		
37901	38099	QPSK	1	99	1	0	23.85	24.70		
38150	37952	QPSK	1	0	1	99	23.73	24.70		

ANT 0		Other PA		CA_41C						
Combination 20MHz+20MHz (100RB+100RB)										
PCC Channel	SCC Channel	Modulation	PCC		SCC		Measured Power (dBm)	Tune up Power (dBm)		
			RB Size	RB offset	RB Size	RB offset				
39750	39948	QPSK	1	99	1	0	23.71	24.70		
40185	40383	QPSK	1	99	1	0	23.75	24.70		
40620	40818	QPSK	1	99	1	0	23.79	24.70		
41055	41253	QPSK	1	99	1	0	23.61	24.70		
41490	41292	QPSK	1	0	1	99	23.73	24.70		

ANT 1		Other PA		CA_7C						
Combination 20MHz+20MHz (100RB+100RB)										
PCC Channel	SCC Channel	Modulation	PCC		SCC		Measured Power (dBm)	Tune up Power (dBm)		
			RB Size	RB offset	RB Size	RB offset				
20850	21048	QPSK	1	99	1	0	22.35	23.20		
21100	21298	QPSK	1	99	1	0	22.51	23.20		
21350	21152	QPSK	1	0	1	99	22.31	23.20		

ANT 1		Other PA		CA_38C						
Combination 20MHz+20MHz (100RB+100RB)										
PCC Channel	SCC Channel	Modulation	PCC		SCC		Measured Power (dBm)	Tune up Power (dBm)		
			RB Size	RB offset	RB Size	RB offset				
37850	38048	QPSK	1	99	1	0	22.75	23.70		
37901	38099	QPSK	1	99	1	0	22.85	23.70		
38150	37952	QPSK	1	0	1	99	22.69	23.70		

ANT 1		Other PA		CA_41C						
Combination 20MHz+20MHz (100RB+100RB)										
PCC Channel	SCC Channel	Modulation	PCC		SCC		Measured Power (dBm)	Tune up Power (dBm)		
			RB Size	RB offset	RB Size	RB offset				
39750	39948	QPSK	1	99	1	0	22.75	23.70		
40185	40383	QPSK	1	99	1	0	22.8	23.70		
40620	40818	QPSK	1	99	1	0	23.05	23.70		
41055	41253	QPSK	1	99	1	0	22.69	23.70		
41490	41292	QPSK	1	0	1	99	22.61	23.70		

ANT 5		Main PA		CA_7C						
Combination 20MHz+20MHz (100RB+100RB)										
PCC Channel	SCC Channel	Modulation	PCC		SCC		Measured Power (dBm)	Tune up Power (dBm)		
			RB Size	RB offset	RB Size	RB offset				
20850	21048	QPSK	1	99	1	0	18.76	19.70		
21100	21298	QPSK	1	99	1	0	18.81	19.70		
21350	21152	QPSK	1	0	1	99	18.71	19.70		

ANT 5		Main PA		CA_38C						
Combination 20MHz+20MHz (100RB+100RB)										
PCC Channel	SCC Channel	Modulation	PCC		SCC		Measured Power (dBm)	Tune up Power (dBm)		
			RB Size	RB offset	RB Size	RB offset				
37850	38048	QPSK	1	99	1	0	21.25	22.20		
37901	38099	QPSK	1	99	1	0	21.38	22.20		
38150	37952	QPSK	1	0	1	99	21.21	22.20		

ANT 5		Main PA		CA_41C						
Combination 20MHz+20MHz (100RB+100RB)										
PCC Channel	SCC Channel	Modulation	PCC		SCC		Measured Power (dBm)	Tune up Power (dBm)		
			RB Size	RB offset	RB Size	RB offset				
39750	39948	QPSK	1	99	1	0	20.18	21.20		
40185	40383	QPSK	1	99	1	0	20.21	21.20		
40620	40818	QPSK	1	99	1	0	20.39	21.20		
41055	41253	QPSK	1	99	1	0	20.25	21.20		
41490	41292	QPSK	1	0	1	99	20.16	21.20		

ANT 6		Main PA		CA_7C						
Combination 20MHz+20MHz (100RB+100RB)										
PCC Channel	SCC Channel	Modulation	PCC		SCC		Measured Power (dBm)	Tune up Power (dBm)		
			RB Size	RB offset	RB Size	RB offset				
20850	21048	QPSK	1	99	1	0	18.51	20.70		
21100	21298	QPSK	1	99	1	0	18.59	20.70		
21350	21152	QPSK	1	0	1	99	18.45	20.70		

ANT 6		Main PA		CA_38C						
Combination 20MHz+20MHz (100RB+100RB)										
PCC Channel	SCC Channel	Modulation	PCC		SCC		Measured Power (dBm)	Tune up Power (dBm)		
			RB Size	RB offset	RB Size	RB offset				
37850	38048	QPSK	1	99	1	0	21.32	23.00		
37901	38099	QPSK	1	99	1	0	21.43	23.00		
38150	37952	QPSK	1	0	1	99	21.35	23.00		

ANT 6		Main PA		CA_41C						
Combination 20MHz+20MHz (100RB+100RB)										
PCC Channel	SCC Channel	Modulation	PCC		SCC		Measured Power (dBm)	Tune up Power (dBm)		
			RB Size	RB offset	RB Size	RB offset				
39750	39948	QPSK	1	99	1	0	20.58	22.50		
40185	40383	QPSK	1	99	1	0	20.64	22.50		
40620	40818	QPSK	1	99	1	0	20.98	22.50		
41055	41253	QPSK	1	99	1	0	20.71	22.50		
41490	41292	QPSK	1	0	1	99	20.56	22.50		



UL CA_Reduced Power Mode for DSI7

ANT 0		Other PA		CA_7C							
Combination 20MHz+20MHz (100RB+100RB)											
PCC Channel	SCC Channel	Modulation	PCC		SCC		Measured Power (dBm)	Tune up Power (dBm)			
			RB Size	RB offset	RB Size	RB offset					
20850	21048	QPSK	1	99	1	0	22.35	23.20			
21100	21298	QPSK	1	99	1	0	22.45	23.20			
21350	21152	QPSK	1	0	1	99	22.19	23.20			

ANT 0		Other PA		CA_38C							
Combination 20MHz+20MHz (100RB+100RB)											
PCC Channel	SCC Channel	Modulation	PCC		SCC		Measured Power (dBm)	Tune up Power (dBm)			
			RB Size	RB offset	RB Size	RB offset					
37850	38048	QPSK	1	99	1	0	23.65	24.70			
37901	38099	QPSK	1	99	1	0	23.85	24.70			
38150	37952	QPSK	1	0	1	99	23.73	24.70			

ANT 0		Other PA		CA_41C							
Combination 20MHz+20MHz (100RB+100RB)											
PCC Channel	SCC Channel	Modulation	PCC		SCC		Measured Power (dBm)	Tune up Power (dBm)			
			RB Size	RB offset	RB Size	RB offset					
39750	39948	QPSK	1	99	1	0	23.71	24.70			
40185	40383	QPSK	1	99	1	0	23.75	24.70			
40620	40818	QPSK	1	99	1	0	23.79	24.70			
41055	41253	QPSK	1	99	1	0	23.61	24.70			
41490	41292	QPSK	1	0	1	99	23.73	24.70			

ANT 1		Other PA		CA_7C							
Combination 20MHz+20MHz (100RB+100RB)											
PCC Channel	SCC Channel	Modulation	PCC		SCC		Measured Power (dBm)	Tune up Power (dBm)			
			RB Size	RB offset	RB Size	RB offset					
20850	21048	QPSK	1	99	1	0	22.35	23.20			
21100	21298	QPSK	1	99	1	0	22.51	23.20			
21350	21152	QPSK	1	0	1	99	22.31	23.20			

ANT 1		Other PA		CA_38C							
Combination 20MHz+20MHz (100RB+100RB)											
PCC Channel	SCC Channel	Modulation	PCC		SCC		Measured Power (dBm)	Tune up Power (dBm)			
			RB Size	RB offset	RB Size	RB offset					
37850	38048	QPSK	1	99	1	0	22.75	23.70			
37901	38099	QPSK	1	99	1	0	22.86	23.70			
38150	37952	QPSK	1	0	1	99	22.69	23.70			

ANT 1		Other PA		CA_41C							
Combination 20MHz+20MHz (100RB+100RB)											
PCC Channel	SCC Channel	Modulation	PCC		SCC		Measured Power (dBm)	Tune up Power (dBm)			
			RB Size	RB offset	RB Size	RB offset					
39750	39948	QPSK	1	99	1	0	22.79	23.70			
40185	40383	QPSK	1	99	1	0	22.8	23.70			
40620	40818	QPSK	1	99	1	0	23.05	23.70			
41055	41253	QPSK	1	99	1	0	22.69	23.70			
41490	41292	QPSK	1	0	1	99	22.61	23.70			

ANT 5		Main PA		CA_7C							
Combination 20MHz+20MHz (100RB+100RB)											
PCC Channel	SCC Channel	Modulation	PCC		SCC		Measured Power (dBm)	Tune up Power (dBm)			
			RB Size	RB offset	RB Size	RB offset					
20850	21048	QPSK	1	99	1	0	23.81	25.20			
21100	21298	QPSK	1	99	1	0	23.89	25.20			
21350	21152	QPSK	1	0	1	99	23.75	25.20			



UL CA_Reduced Power Mode for DS18

ANT 0 Other PA

CA_7C								
Combination 20MHz+20MHz (100RB+100RB)								
PCC Channel	SCC Channel	Modulation	PCC		SCC		Measured Power (dBm)	Tune up Power (dBm)
			RB Size	RB offset	RB Size	RB offset		
20850	21048	QPSK	1	99	1	0	22.35	23.20
21100	21298	QPSK	1	99	1	0	22.45	23.20
21350	21152	QPSK	1	0	1	99	22.19	23.20

ANT 0 Other PA

CA_38C								
Combination 20MHz+20MHz (100RB+100RB)								
PCC Channel	SCC Channel	Modulation	PCC		SCC		Measured Power (dBm)	Tune up Power (dBm)
			RB Size	RB offset	RB Size	RB offset		
37850	38048	QPSK	1	99	1	0	23.65	24.70
37901	38099	QPSK	1	99	1	0	23.85	24.70
38150	37952	QPSK	1	0	1	99	23.73	24.70

ANT 0 Other PA

CA_41C								
Combination 20MHz+20MHz (100RB+100RB)								
PCC Channel	SCC Channel	Modulation	PCC		SCC		Measured Power (dBm)	Tune up Power (dBm)
			RB Size	RB offset	RB Size	RB offset		
39750	39948	QPSK	1	99	1	0	23.71	24.70
40185	40383	QPSK	1	99	1	0	23.75	24.70
40620	40818	QPSK	1	99	1	0	23.79	24.70
41055	41253	QPSK	1	99	1	0	23.61	24.70
41490	41292	QPSK	1	0	1	99	23.73	24.70

ANT 1 Other PA

CA_7C								
Combination 20MHz+20MHz (100RB+100RB)								
PCC Channel	SCC Channel	Modulation	PCC		SCC		Measured Power (dBm)	Tune up Power (dBm)
			RB Size	RB offset	RB Size	RB offset		
20850	21048	QPSK	1	99	1	0	18.71	19.70
21100	21298	QPSK	1	99	1	0	18.76	19.70
21350	21152	QPSK	1	0	1	99	18.61	19.70

ANT 1 Other PA

CA_38C								
Combination 20MHz+20MHz (100RB+100RB)								
PCC Channel	SCC Channel	Modulation	PCC		SCC		Measured Power (dBm)	Tune up Power (dBm)
			RB Size	RB offset	RB Size	RB offset		
37850	38048	QPSK	1	99	1	0	18.81	19.70
37901	38099	QPSK	1	99	1	0	18.99	19.70
38150	37952	QPSK	1	0	1	99	18.75	19.70

ANT 1 Other PA

CA_41C								
Combination 20MHz+20MHz (100RB+100RB)								
PCC Channel	SCC Channel	Modulation	PCC		SCC		Measured Power (dBm)	Tune up Power (dBm)
			RB Size	RB offset	RB Size	RB offset		
39750	39948	QPSK	1	99	1	0	18.71	19.70
40185	40383	QPSK	1	99	1	0	18.75	19.70
40620	40818	QPSK	1	99	1	0	18.91	19.70
41055	41253	QPSK	1	99	1	0	18.51	19.70
41490	41292	QPSK	1	0	1	99	18.43	19.70

ANT 5 Main PA

CA_7C								
Combination 20MHz+20MHz (100RB+100RB)								
PCC Channel	SCC Channel	Modulation	PCC		SCC		Measured Power (dBm)	Tune up Power (dBm)
			RB Size	RB offset	RB Size	RB offset		
20850	21048	QPSK	1	99	1	0	15.31	16.20
21100	21298	QPSK	1	99	1	0	15.35	16.20
21350	21152	QPSK	1	0	1	99	15.32	16.20

ANT 5 Main PA

CA_38C								
Combination 20MHz+20MHz (100RB+100RB)								
PCC Channel	SCC Channel	Modulation	PCC		SCC		Measured Power (dBm)	Tune up Power (dBm)
			RB Size	RB offset	RB Size	RB offset		
37850	38048	QPSK	1	99	1	0	17.25	18.20
37901	38099	QPSK	1	99	1	0	17.35	18.20
38150	37952	QPSK	1	0	1	99	17.31	18.20

ANT 5 Main PA

CA_41C								
Combination 20MHz+20MHz (100RB+100RB)								
PCC Channel	SCC Channel	Modulation	PCC		SCC		Measured Power (dBm)	Tune up Power (dBm)
			RB Size	RB offset	RB Size	RB offset		
39750	39948	QPSK	1	99	1	0	17.21	18.20
40185	40383	QPSK	1	99	1	0	17.25	18.20
40620	40818	QPSK	1	99	1	0	17.56	18.20
41055	41253	QPSK	1	99	1	0	17.31	18.20
41490	41292	QPSK	1	0	1	99	17.29	18.20

ANT 6 Main PA

CA_7C								
Combination 20MHz+20MHz (100RB+100RB)								
PCC Channel	SCC Channel	Modulation	PCC		SCC		Measured Power (dBm)	Tune up Power (dBm)
			RB Size	RB offset	RB Size	RB offset		
20850	21048	QPSK	1	99	1	0	18.25	20.20
21100	21298	QPSK	1	99	1	0	18.31	20.20
21350	21152	QPSK	1	0	1	99	18.25	20.20

ANT 6 Main PA

CA_38C								
Combination 20MHz+20MHz (100RB+100RB)								
PCC Channel	SCC Channel	Modulation	PCC		SCC		Measured Power (dBm)	Tune up Power (dBm)
			RB Size	RB offset	RB Size	RB offset		
37850	38048	QPSK	1	99	1	0	18.41	20.00
37901	38099	QPSK	1	99	1	0	18.45	20.00
38150	37952	QPSK	1	0	1	99	18.35	20.00

ANT 6 Main PA

CA_41C								
Combination 20MHz+20MHz (100RB+100RB)								
PCC Channel	SCC Channel	Modulation	PCC		SCC		Measured Power (dBm)	Tune up Power (dBm)
			RB Size	RB offset	RB Size	RB offset		
39750	39948	QPSK	1	99	1	0	19.21	21.00
40185	40383	QPSK	1	99	1	0	19.23	21.00
40620	40818	QPSK	1	99	1	0	19.42	21.00
41055	41253	QPSK	1	99	1	0	19.35	21.00
41490	41292	QPSK	1	0	1	99	19.18	21.00