

System Check_835MHz

D835V2-4d162

Communication System: D835; Frequency: 835.0

Medium: HSL. Medium parameters used: $f= 835.0$ MHz; $\sigma= 0.914$ S/m; $\epsilon_r = 43.5$

Ambient Temperature: 23.5°C; Liquid Temperature: 22.4°C

DASY6 Configuration:

- Probe: EX3DV4 - SN3826; ConvF(9.31, 9.31, 9.31); Calibrated: 2022/8/8
- Sensor-Surface: 1.4 mm
- Electronics: DAE4 Sn1210; Calibrated: 2022/4/12
- Phantom: Twin-SAM V5.0 (30deg probe tilt); Serial: 1670; Section: Flat
- Measurement Software: cDASY6 V16.0.0.116
- UID: CW, 0--
- MAIA: Area Scan: N/A; Zoom Scan: N/A

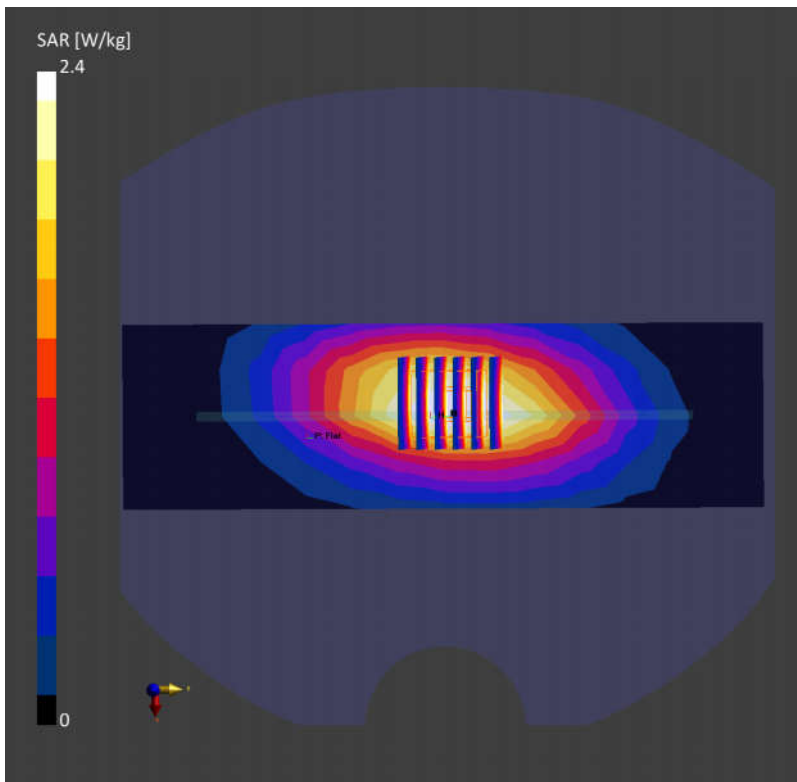
Area Scan (60.0 mm x 210.0 mm): Measurement Grid: 15.0 mm x 15.0 mm

SAR (1g) = 2.24 W/kg; SAR (10g) = 1.49 W/kg;

Zoom Scan (30.0 mm x 30.0 mm x 30.0 mm): Measurement Grid: 6.0 mm x 6.0 mm x 1.5 mm

Power Drift = -0.02 dB

SAR (1g) = 2.40 W/kg; SAR (10g) = 1.50 W/kg;



System Check_1750MHz

D1750V2-SN:1137

Communication System: D1750; Frequency: 1750.0

Medium: HSL. Medium parameters used: $f=1750.0$ MHz; $\sigma=1.34$ S/m; $\epsilon_r=41.9$

Ambient Temperature: 23.4°C; Liquid Temperature: 22.6°C

DASY6 Configuration:

- Probe: EX3DV4 - SN3826; ConvF(8.56, 8.56, 8.56); Calibrated: 2022/8/8
- Sensor-Surface: 1.4 mm
- Electronics: DAE4 Sn1210; Calibrated: 2022/4/12
- Phantom: Twin-SAM V5.0 (30deg probe tilt); Serial: 1670; Section: Flat
- Measurement Software: cDASY6 V16.0.0.116
- UID: CW, 0--
- MAIA: Area Scan: N/A; Zoom Scan: N/A

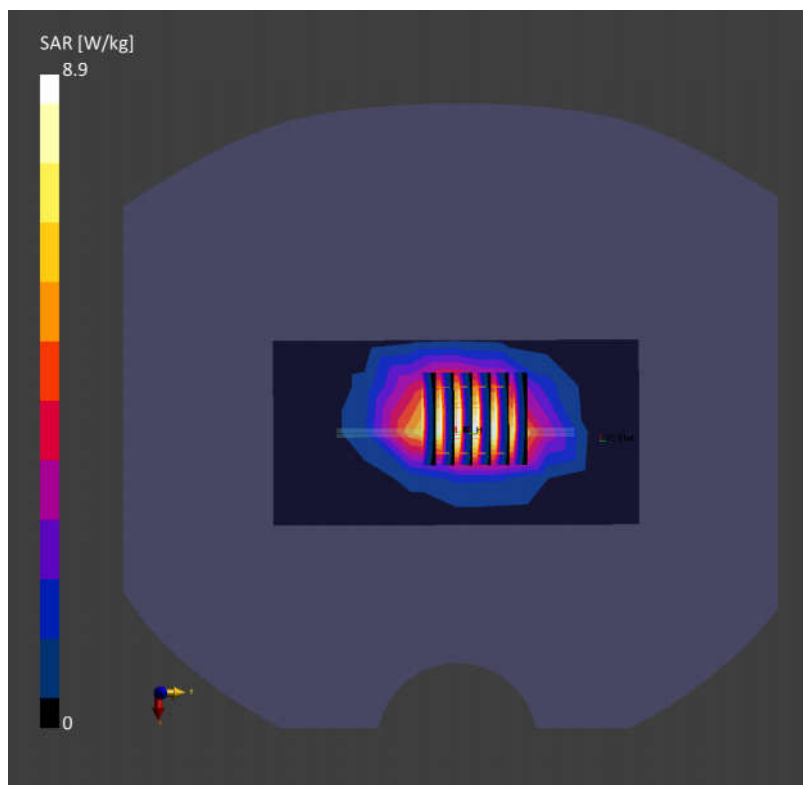
Area Scan (60.0 mm x 120.0 mm): Measurement Grid: 15.0 mm x 15.0 mm

SAR (1g) = 7.91 W/kg; SAR (10g) = 4.40 W/kg;

Zoom Scan (30.0 mm x 30.0 mm x 30.0 mm): Measurement Grid: 6.0 mm x 6.0 mm x 1.5 mm

Power Drift = 0.03 dB

SAR (1g) = 8.90 W/kg; SAR (10g) = 4.66 W/kg;



System Check_2600MHz

D2600V2-SN:1070

Communication System: D2600; Frequency: 2600.0

Medium: HSL. Medium parameters used: $f= 2600.0$ MHz; $\sigma= 1.95$ S/m; $\epsilon_r = 37.7$

Ambient Temperature: 23.3°C; Liquid Temperature: 22.3°C

DASY6 Configuration:

- Probe: EX3DV4 - SN3826; ConvF(7.35, 7.35, 7.35); Calibrated: 2022/8/8
- Sensor-Surface: 1.4 mm
- Electronics: DAE4 Sn1210; Calibrated: 2022/4/12
- Phantom: Twin-SAM V5.0 (30deg probe tilt); Serial: 1670; Section: Flat
- Measurement Software: cDASY6 V16.0.0.116
- UID: CW, 0--
- MAIA: Area Scan: N/A; Zoom Scan: N/A

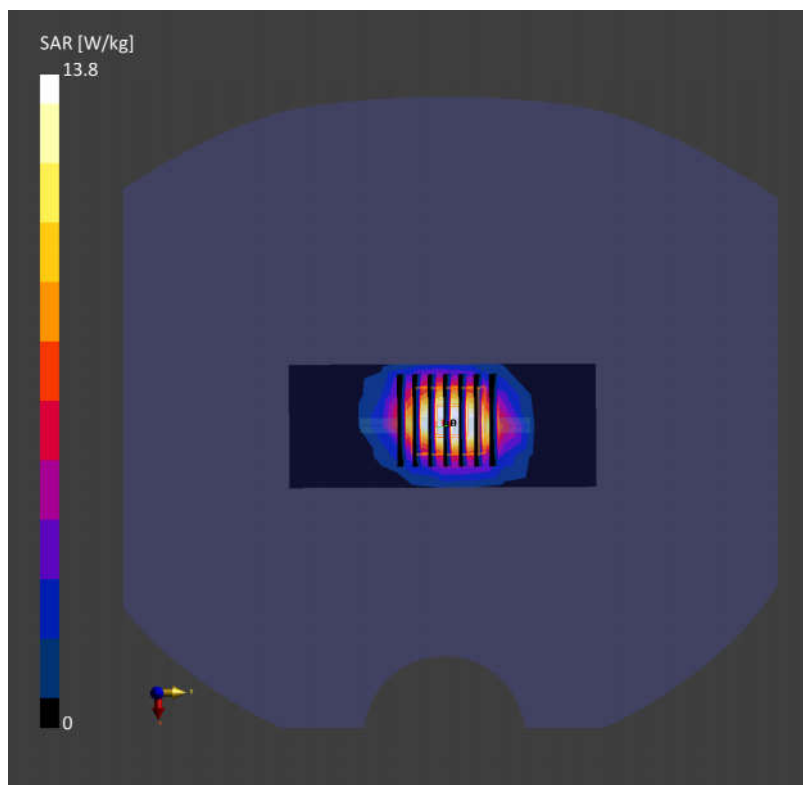
Area Scan (40.0 mm x 100.0 mm): Measurement Grid: 10.0 mm x 10.0 mm

SAR (1g) = 13.3 W/kg; SAR (10g) = 6.04 W/kg;

Zoom Scan (30.0 mm x 30.0 mm x 30.0 mm): Measurement Grid: 5.0 mm x 5.0 mm x 1.5 mm

Power Drift = -0.01 dB

SAR (1g) = 13.8 W/kg; SAR (10g) = 6.12 W/kg;



System Check_3500MHz

D3500V2-1076

Communication System: D3500; Frequency: 3500.0

Medium: HSL. Medium parameters used: $f=3500.0$ MHz; $\sigma=2.79$ S/m; $\epsilon_r=39.2$

Ambient Temperature: 23.5°C; Liquid Temperature: 22.2°C

DASY6 Configuration:

- Probe: EX3DV4 - SN3826; ConvF(7.05, 7.05, 7.05); Calibrated: 2022/8/8
- Sensor-Surface: 1.4 mm
- Electronics: DAE4 Sn1210; Calibrated: 2022/4/12
- Phantom: Twin-SAM V5.0 (30deg probe tilt); Serial: 1670; Section: Flat
- Measurement Software: cDASY6 V16.0.0.116
- UID: CW, 0--
- MAIA: Area Scan: N/A; Zoom Scan: N/A

Area Scan (40.0 mm x 80.0 mm): Measurement Grid: 10.0 mm x 10.0 mm

SAR (1g) = 6.14 W/kg; SAR (10g) = 2.53 W/kg;

Zoom Scan (28.0 mm x 28.0 mm x 28.0 mm): Measurement Grid: 5.0 mm x 5.0 mm x 1.4 mm

Power Drift = 0.04 dB

SAR (1g) = 6.81 W/kg; SAR (10g) = 2.56 W/kg;

