

## System Check\_Head\_835MHz

**DUT:D835V2 - SN:4d091**

Communication System: ; Frequency: 835.000

Medium: HSL. Medium parameters used:  $f= 835.000$  MHz;  $\sigma= 0.912$  S/m;  $\epsilon_r = 41.9$

Ambient Temperature: 23.3°C; Liquid Temperature: 22.6°C

DASY6 Configuration:

- Probe: EX3DV4 - SN7764; ConvF(9.78, 9.78, 9.78); Calibrated: 2023-10-05
- Sensor-Surface: 1.4 mm
- Electronics: DAE4 Sn1649; Calibrated: 2023-04-24
- Phantom: Twin-SAM V8.0 (30deg probe tilt); Serial: 2022
- Measurement Software: cDASY6 V6.6.0.13926

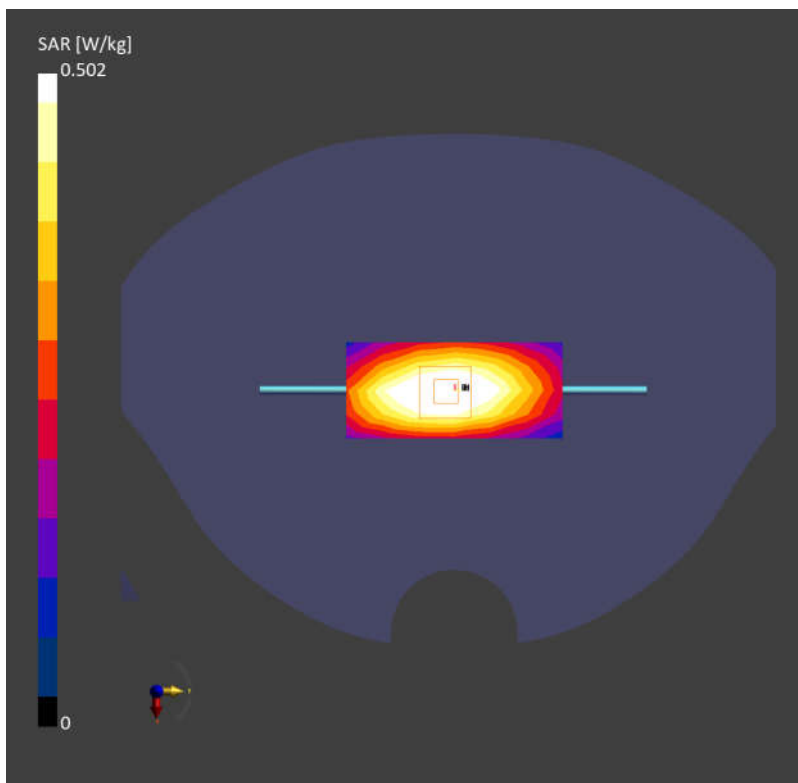
**Area Scan (40.0 mm x 90.0 mm):** Measurement Grid: 10.0 mm x 15.0 mm

SAR (1g) = 0.501 W/kg; SAR (10g) = 0.316 W/kg;

**Zoom Scan (32.0 mm x 32.0 mm x 30.0 mm):** Measurement Grid: 6.0 mm x 6.0 mm x 1.5 mm

Power Drift = 0.01 dB

SAR (1g) = 0.502 W/kg; SAR (10g) = 0.329 W/kg;



## System Check\_Head\_1750MHz

**DUT:D1750V2 - SN:1090**

Communication System: ; Frequency: 1750.000

Medium: HSL. Medium parameters used:  $f= 1750.000$  MHz;  $\sigma= 1.32$  S/m;  $\epsilon_r = 40.2$

Ambient Temperature: 23.4°C; Liquid Temperature: 22.9°C

DASY6 Configuration:

- Probe: EX3DV4 - SN7764; ConvF(8.78, 8.78, 8.78); Calibrated: 2023-10-05
- Sensor-Surface: 1.4 mm
- Electronics: DAE4 Sn1649; Calibrated: 2023-04-24
- Phantom: Twin-SAM V8.0 (30deg probe tilt); Serial: 2022
- Measurement Software: cDASY6 V6.6.0.13926

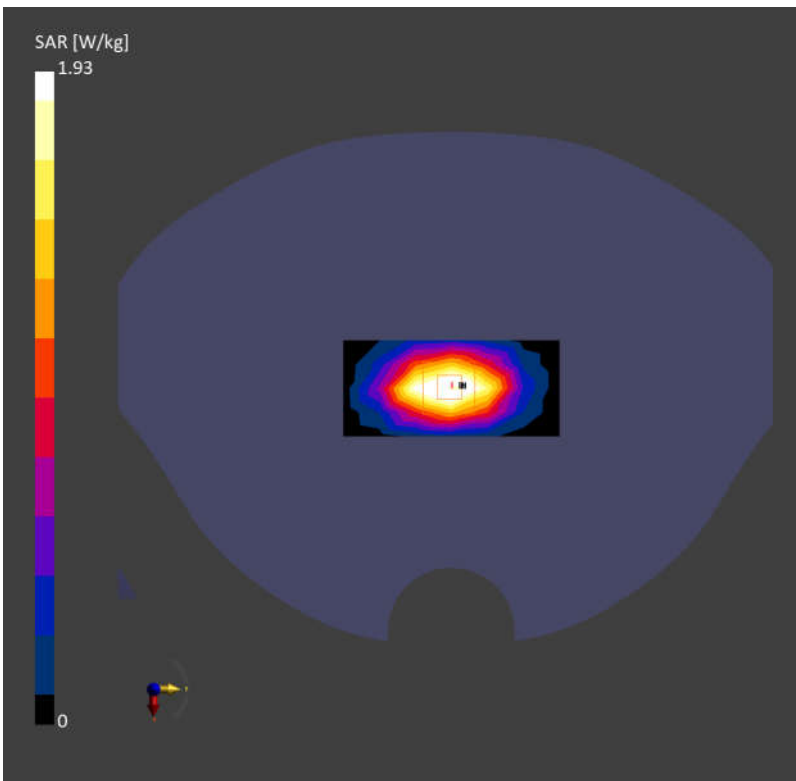
**Area Scan (40.0 mm x 90.0 mm):** Measurement Grid: 10.0 mm x 15.0 mm

SAR (1g) = 1.91 W/kg; SAR (10g) = 1.03 W/kg;

**Zoom Scan (32.0 mm x 32.0 mm x 30.0 mm):** Measurement Grid: 6.0 mm x 6.0 mm x 1.5 mm

Power Drift = 0.01 dB

SAR (1g) = 1.93 W/kg; SAR (10g) = 1.05 W/kg;



## System Check\_Head\_1900MHz

**DUT:D1900V2 - SN:5d118**

Communication System: ; Frequency: 1900.000

Medium: HSL. Medium parameters used:  $f= 1900.000$  MHz;  $\sigma= 1.41$  S/m;  $\epsilon_r = 40.2$

Ambient Temperature: 23.2°C; Liquid Temperature: 22.6°C

DASY6 Configuration:

- Probe: EX3DV4 - SN7764; ConvF(8.46, 8.46, 8.46); Calibrated: 2023-10-05
- Sensor-Surface: 1.4 mm
- Electronics: DAE4 Sn1649; Calibrated: 2023-04-24
- Phantom: Twin-SAM V8.0 (30deg probe tilt); Serial: 2022
- Measurement Software: cDASY6 V6.6.0.13926

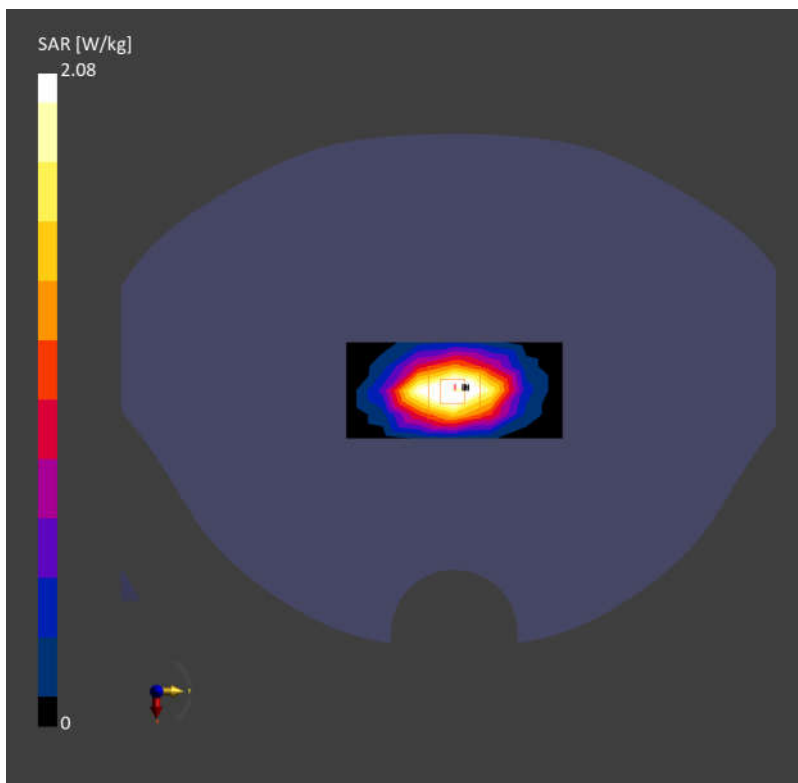
**Area Scan (40.0 mm x 90.0 mm):** Measurement Grid: 10.0 mm x 15.0 mm

SAR (1g) = 2.09 W/kg; SAR (10g) = 1.08 W/kg;

**Zoom Scan (32.0 mm x 32.0 mm x 30.0 mm):** Measurement Grid: 6.0 mm x 6.0 mm x 1.5 mm

Power Drift = 0.00 dB

SAR (1g) = 2.08 W/kg; SAR (10g) = 1.10 W/kg;



## System Check\_Head\_2600MHz

**DUT:D2600V2 - SN:1112**

Communication System: ; Frequency: 2600.000

Medium: HSL. Medium parameters used:  $f= 2600.000$  MHz;  $\sigma= 1.88$  S/m;  $\epsilon_r = 39.2$

Ambient Temperature: 23.2°C; Liquid Temperature: 22.8°C

DASY6 Configuration:

- Probe: EX3DV4 - SN7764; ConvF(8.02, 8.02, 8.02); Calibrated: 2023-10-05
- Sensor-Surface: 1.4 mm
- Electronics: DAE4 Sn1649; Calibrated: 2023-04-24
- Phantom: Twin-SAM V8.0 (30deg probe tilt); Serial: 2022
- Measurement Software: cDASY6 V6.6.0.13926

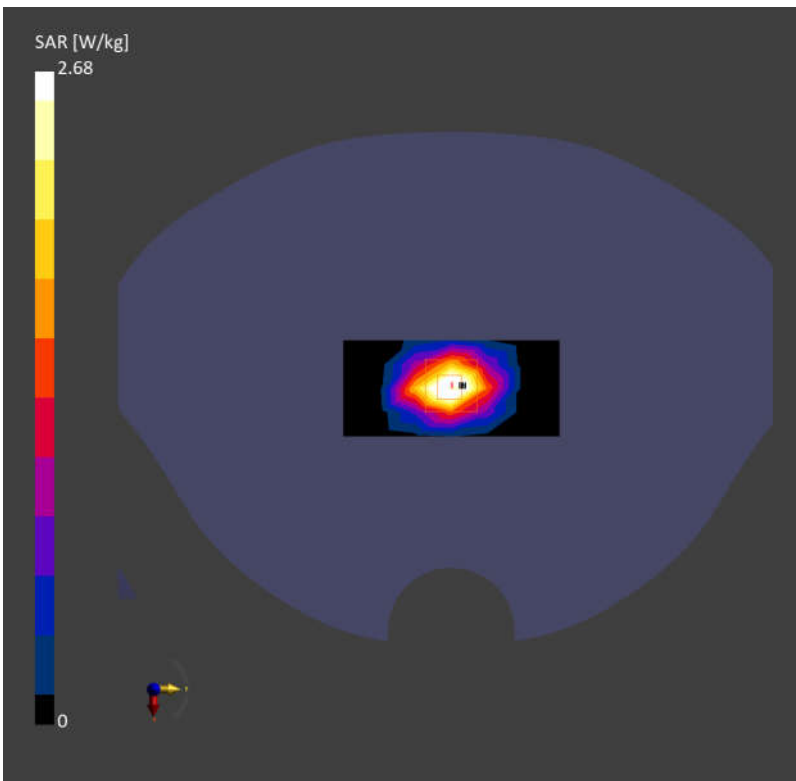
**Area Scan (40.0 mm x 90.0 mm):** Measurement Grid: 10.0 mm x 12.0 mm

SAR (1g) = 2.55 W/kg; SAR (10g) = 1.14 W/kg;

**Zoom Scan (30.0 mm x 30.0 mm x 30.0 mm):** Measurement Grid: 5.0 mm x 5.0 mm x 1.5 mm

Power Drift = -0.01 dB

SAR (1g) = 2.68 W/kg; SAR (10g) = 1.22 W/kg;



## System Check\_Head\_3500MHz

**DUT:D3500V2 - SN:1037**

Communication System: ; Frequency: 3500.000

Medium: HSL. Medium parameters used:  $f= 3500.000$  MHz;  $\sigma= 2.81$  S/m;  $\epsilon_r = 38.7$

Ambient Temperature: 23.4°C; Liquid Temperature: 22.9°C

DASY6 Configuration:

- Probe: EX3DV4 - SN7764; ConvF(7.11, 7.11, 7.11); Calibrated: 2023-10-05
- Sensor-Surface: 1.4 mm
- Electronics: DAE4 Sn1649; Calibrated: 2023-04-24
- Phantom: Twin-SAM V8.0 (30deg probe tilt); Serial: 2022
- Measurement Software: cDASY6 V6.6.0.13926

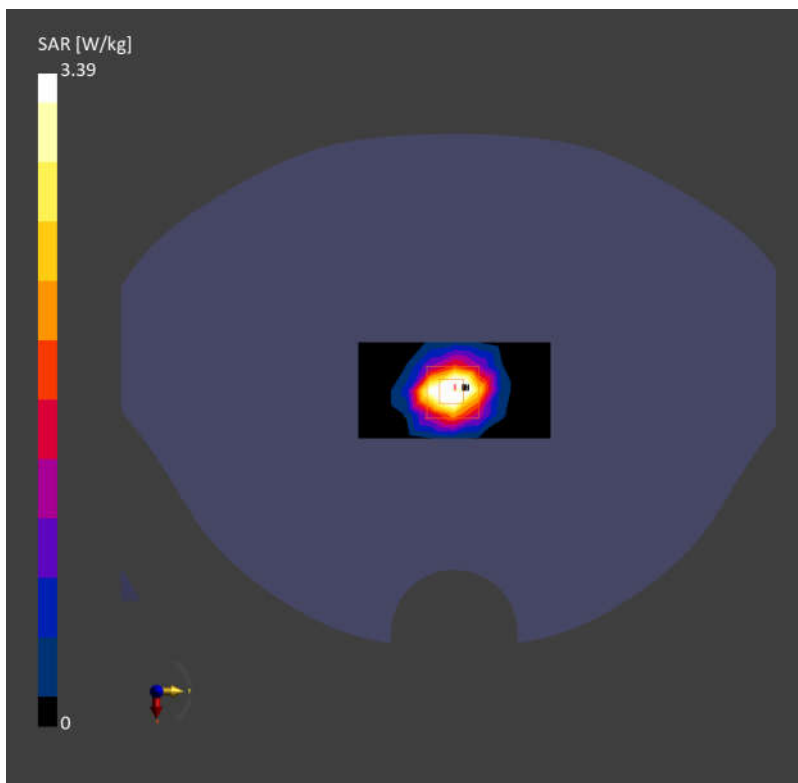
**Area Scan (40.0 mm x 80.0 mm):** Measurement Grid: 10.0 mm x 10.0 mm

SAR (1g) = 3.34 W/kg; SAR (10g) = 1.27 W/kg;

**Zoom Scan (24.0 mm x 24.0 mm x 22.0 mm):** Measurement Grid: 4.0 mm x 4.0 mm x 1.4 mm

Power Drift = 0.01 dB

SAR (1g) = 3.39 W/kg; SAR (10g) = 1.33 W/kg;



## System Check\_Head\_3700MHz

**DUT:D3700V2 - SN:1008**

Communication System: ; Frequency: 3700.000

Medium: HSL. Medium parameters used:  $f= 3700.000$  MHz;  $\sigma= 2.99$  S/m;  $\epsilon_r = 38.4$

Ambient Temperature: 23.3°C; Liquid Temperature: 22.9°C

DASY6 Configuration:

- Probe: EX3DV4 - SN7764; ConvF(7.1, 7.1, 7.1); Calibrated: 2023-10-05
- Sensor-Surface: 1.4 mm
- Electronics: DAE4 Sn1649; Calibrated: 2023-04-24
- Phantom: Twin-SAM V8.0 (30deg probe tilt); Serial: 2022
- Measurement Software: cDASY6 V6.6.0.13926

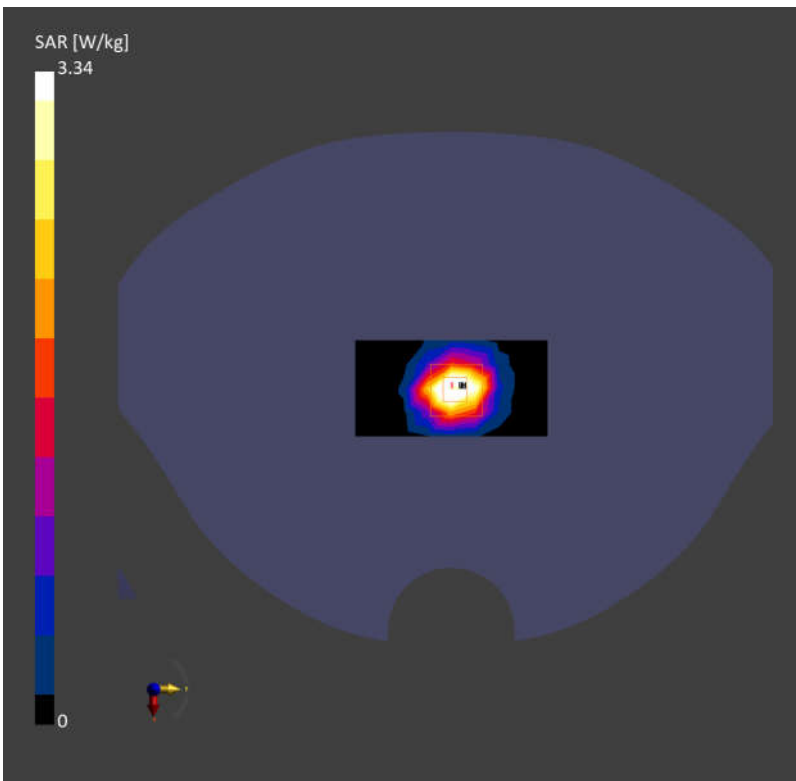
**Area Scan (40.0 mm x 80.0 mm):** Measurement Grid: 10.0 mm x 10.0 mm

SAR (1g) = 3.25 W/kg; SAR (10g) = 1.21 W/kg;

**Zoom Scan (24.0 mm x 24.0 mm x 22.0 mm):** Measurement Grid: 4.0 mm x 4.0 mm x 1.4 mm

Power Drift = 0.00 dB

SAR (1g) = 3.34 W/kg; SAR (10g) = 1.28 W/kg;



## System Check\_Head\_3900MHz

**DUT:D3900V2 - SN:1048**

Communication System: ; Frequency: 3900.000

Medium: HSL. Medium parameters used:  $f= 3900.000$  MHz;  $\sigma= 3.18$  S/m;  $\epsilon_r = 38.0$

Ambient Temperature: 23.4°C; Liquid Temperature: 22.7°C

DASY6 Configuration:

- Probe: EX3DV4 - SN7764; ConvF(6.74, 6.74, 6.74); Calibrated: 2023-10-05
- Sensor-Surface: 1.4 mm
- Electronics: DAE4 Sn1649; Calibrated: 2023-04-24
- Phantom: Twin-SAM V8.0 (30deg probe tilt); Serial: 2022
- Measurement Software: cDASY6 V6.6.0.13926

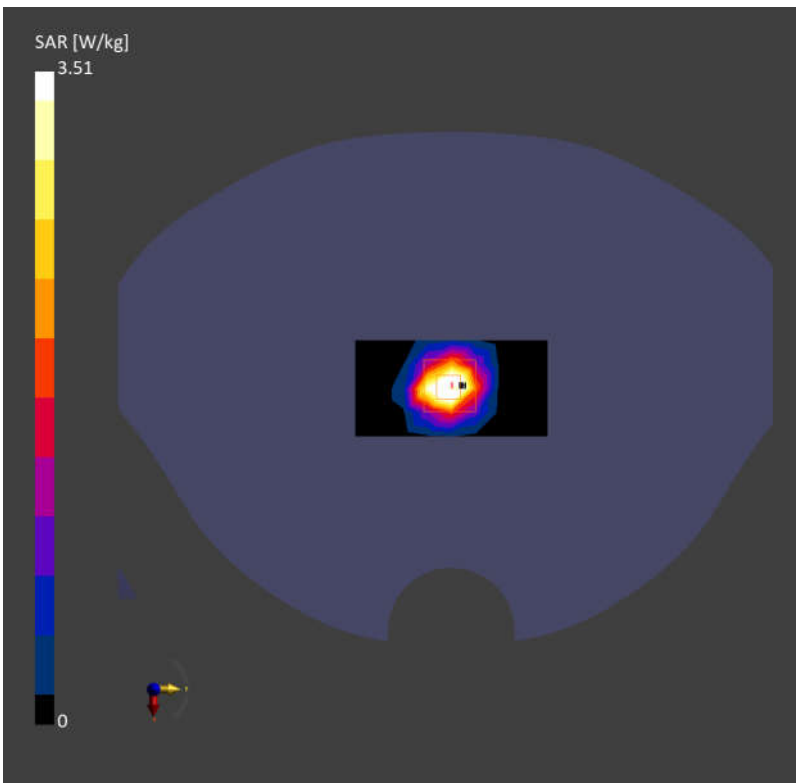
**Area Scan (40.0 mm x 80.0 mm):** Measurement Grid: 10.0 mm x 10.0 mm

SAR (1g) = 3.34 W/kg; SAR (10g) = 1.19 W/kg;

**Zoom Scan (24.0 mm x 24.0 mm x 22.0 mm):** Measurement Grid: 4.0 mm x 4.0 mm x 1.4 mm

Power Drift = -0.02 dB

SAR (1g) = 3.51 W/kg; SAR (10g) = 1.29 W/kg;



## System Check\_Head\_835MHz

**DUT:D835V2 - SN:4d091**

Communication System: ; Frequency: 835.000

Medium: HSL. Medium parameters used:  $f = 835.000$  MHz;  $\sigma = 0.924$  S/m;  $\epsilon_r = 41.4$

Ambient Temperature: 23.1°C; Liquid Temperature: 22.8°C

DASY6 Configuration:

- Probe: EX3DV4 - SN7764; ConvF(9.78, 9.78, 9.78); Calibrated: 2023-10-05
- Sensor-Surface: 1.4 mm
- Electronics: DAE4 Sn1649; Calibrated: 2023-04-24
- Phantom: Twin-SAM V8.0 (30deg probe tilt); Serial: 2022
- Measurement Software: cDASY6 V6.6.0.13926

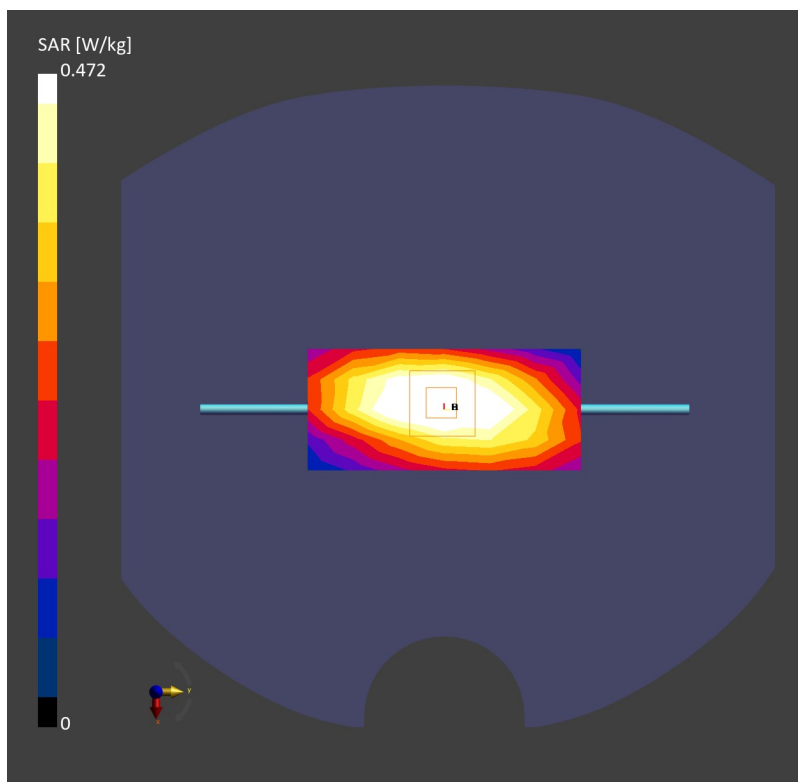
**Area Scan (40.0 mm x 90.0 mm):** Measurement Grid: 10.0 mm x 15.0 mm

SAR (1g) = 0.487 W/kg; SAR (10g) = 0.319 W/kg;

**Zoom Scan (30.0 mm x 30.0 mm x 30.0 mm):** Measurement Grid: 6.0 mm x 6.0 mm x 1.5 mm

Power Drift = -0.01 dB

SAR (1g) = 0.472 W/kg; SAR (10g) = 0.305 W/kg;





## System Check\_Head\_1750MHz

### DUT:D1750V2 - SN:1090

Communication System: ; Frequency: 1750.000

Medium: HSL. Medium parameters used:  $f= 1750.000$  MHz;  $\sigma= 1.35$  S/m;  $\epsilon_r = 40.1$

Ambient Temperature: 23.1°C; Liquid Temperature: 22.7°C

#### DASY6 Configuration:

- Probe: EX3DV4 - SN7764; ConvF(8.78, 8.78, 8.78); Calibrated: 2023-10-05
- Sensor-Surface: 1.4 mm
- Electronics: DAE4 Sn1649; Calibrated: 2023-04-24
- Phantom: Twin-SAM V8.0 (30deg probe tilt); Serial: 2022
- Measurement Software: cDASY6 V6.6.0.13926

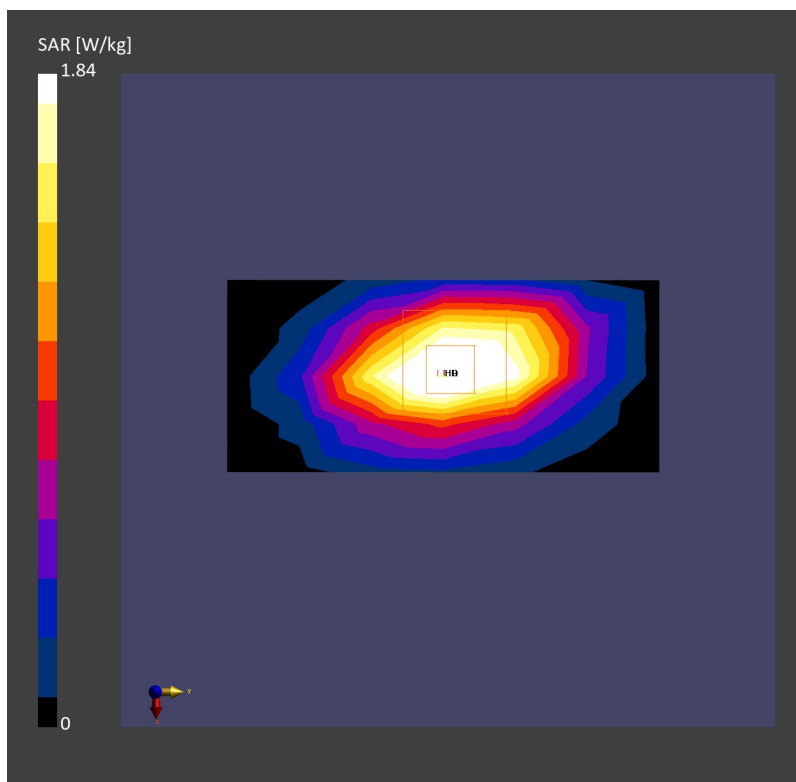
**Area Scan (40.0 mm x 90.0 mm):** Measurement Grid: 10.0 mm x 15.0 mm

SAR (1g) = 1.87 W/kg; SAR (10g) = 1.00 W/kg;

**Zoom Scan (30.0 mm x 30.0 mm x 30.0 mm):** Measurement Grid: 6.0 mm x 6.0 mm x 1.5 mm

Power Drift = 0.02 dB

SAR (1g) = 1.84 W/kg; SAR (10g) = 0.968 W/kg;



## System Check\_Head\_1900MHz

### DUT:D1900V2 - SN:5d118

Communication System: ; Frequency: 1900.000

Medium: HSL. Medium parameters used:  $f= 1900.000$  MHz;  $\sigma= 1.43$  S/m;  $\epsilon_r = 39.8$

Ambient Temperature: 23.2°C; Liquid Temperature: 22.9°C

DASY6 Configuration:

- Probe: EX3DV4 - SN7764; ConvF(8.46, 8.46, 8.46); Calibrated: 2023-10-05
- Sensor-Surface: 1.4 mm
- Electronics: DAE4 Sn1649; Calibrated: 2023-04-24
- Phantom: Twin-SAM V8.0 (30deg probe tilt); Serial: 2022
- Measurement Software: cDASY6 V6.6.0.13926

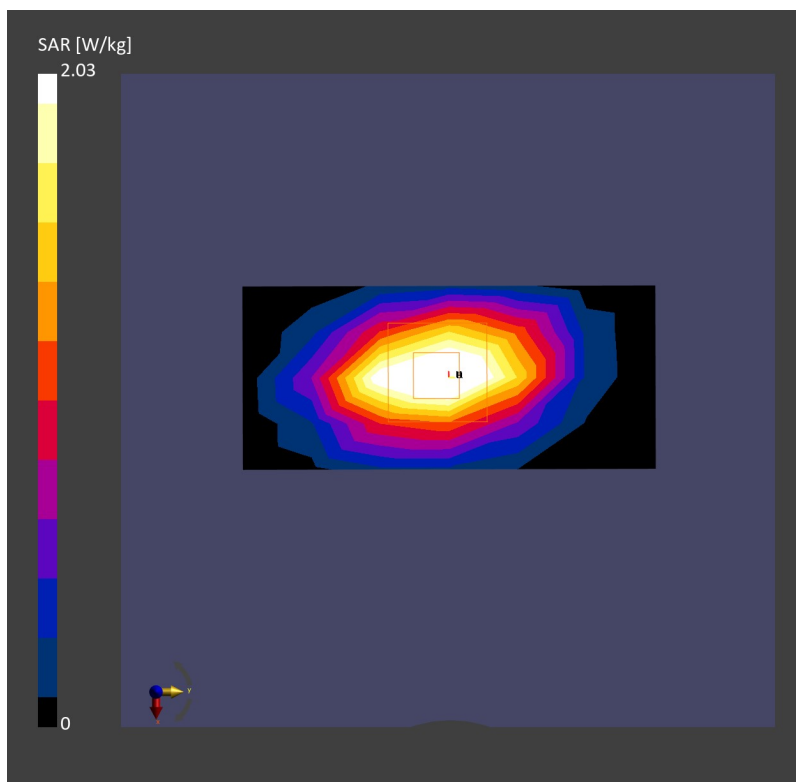
**Area Scan (40.0 mm x 90.0 mm):** Measurement Grid: 10.0 mm x 15.0 mm

SAR (1g) = 2.02 W/kg; SAR (10g) = 1.05 W/kg;

**Zoom Scan (30.0 mm x 30.0 mm x 30.0 mm):** Measurement Grid: 6.0 mm x 6.0 mm x 1.5 mm

Power Drift = 0.02 dB

SAR (1g) = 2.03 W/kg; SAR (10g) = 1.04 W/kg;



## System Check\_Head\_2600MHz

### DUT:D2600V2 - SN:1112

Communication System: ; Frequency: 2600.000

Medium: HSL. Medium parameters used:  $f= 2600.000$  MHz;  $\sigma= 1.96$  S/m;  $\epsilon_r = 40.4$

Ambient Temperature: 23.2°C; Liquid Temperature: 22.6°C

#### DASY6 Configuration:

- Probe: EX3DV4 - SN7764; ConvF(8.02, 8.02, 8.02); Calibrated: 2023-10-05
- Sensor-Surface: 1.4 mm
- Electronics: DAE4 Sn1649; Calibrated: 2023-04-24
- Phantom: Twin-SAM V8.0 (30deg probe tilt); Serial: 2022
- Measurement Software: cDASY6 V6.6.0.13926

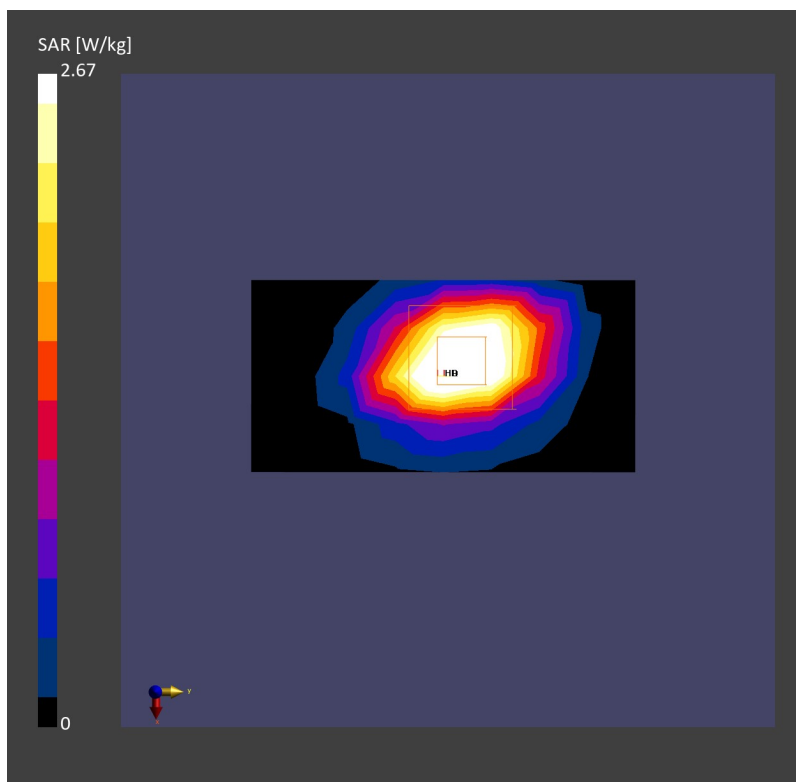
**Area Scan (40.0 mm x 80.0 mm):** Measurement Grid: 10.0 mm x 10.0 mm

SAR (1g) = 2.72 W/kg; SAR (10g) = 1.25 W/kg;

**Zoom Scan (30.0 mm x 30.0 mm x 30.0 mm):** Measurement Grid: 5.0 mm x 5.0 mm x 1.5 mm

Power Drift = -0.02 dB

SAR (1g) = 2.67 W/kg; SAR (10g) = 1.20 W/kg;



## System Check\_Head\_3500MHz

### DUT:D3500V2 - SN:1037

Communication System: ; Frequency: 3500.000

Medium: HSL. Medium parameters used:  $f= 3500.000$  MHz;  $\sigma= 2.88$  S/m;  $\epsilon_r = 38.5$

Ambient Temperature: 23.3°C; Liquid Temperature: 22.7°C

#### DASY6 Configuration:

- Probe: EX3DV4 - SN7764; ConvF(7.11, 7.11, 7.11); Calibrated: 2023-10-05
- Sensor-Surface: 1.4 mm
- Electronics: DAE4 Sn1649; Calibrated: 2023-04-24
- Phantom: Twin-SAM V8.0 (30deg probe tilt); Serial: 2022
- Measurement Software: cDASY6 V6.6.0.13926

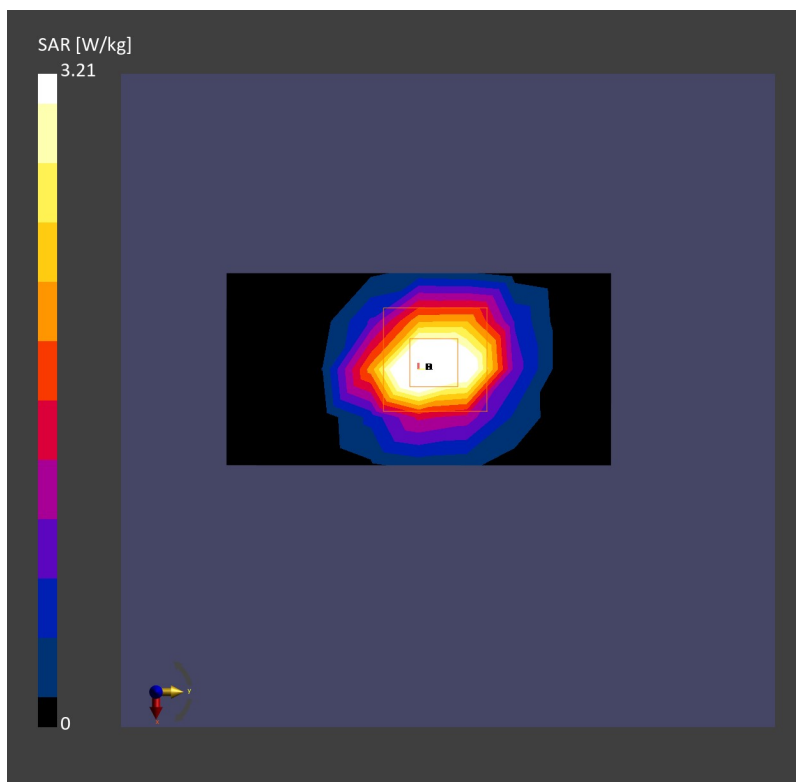
**Area Scan (40.0 mm x 80.0 mm):** Measurement Grid: 10.0 mm x 10.0 mm

SAR (1g) = 3.18 W/kg; SAR (10g) = 1.22 W/kg;

**Zoom Scan (28.0 mm x 28.0 mm x 28.0 mm):** Measurement Grid: 4.0 mm x 4.0 mm x 1.4 mm

Power Drift = 0.01 dB

SAR (1g) = 3.21 W/kg; SAR (10g) = 1.23 W/kg;



## System Check\_Head\_3700MHz

### DUT:D3700V2 - SN:1008

Communication System: ; Frequency: 3700.000

Medium: HSL. Medium parameters used:  $f= 3700.000$  MHz;  $\sigma= 3.08$  S/m;  $\epsilon_r = 38.0$

Ambient Temperature: 23.2°C; Liquid Temperature: 22.7°C

#### DASY6 Configuration:

- Probe: EX3DV4 - SN7764; ConvF(7.1, 7.1, 7.1); Calibrated: 2023-10-05
- Sensor-Surface: 1.4 mm
- Electronics: DAE4 Sn1649; Calibrated: 2023-04-24
- Phantom: Twin-SAM V8.0 (30deg probe tilt); Serial: 2022
- Measurement Software: cDASY6 V6.6.0.13926

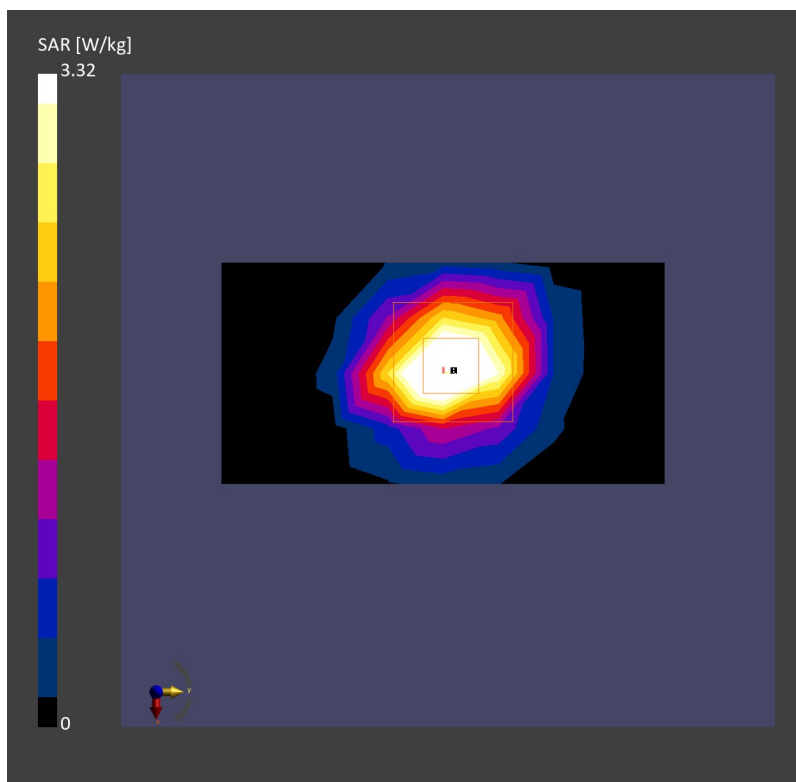
**Area Scan (40.0 mm x 80.0 mm):** Measurement Grid: 10.0 mm x 10.0 mm

SAR (1g) = 3.32 W/kg; SAR (10g) = 1.23 W/kg;

**Zoom Scan (28.0 mm x 28.0 mm x 28.0 mm):** Measurement Grid: 4.0 mm x 4.0 mm x 1.4 mm

Power Drift = -0.01 dB

SAR (1g) = 3.32 W/kg; SAR (10g) = 1.23 W/kg;



## System Check\_Head\_3900MHz

### DUT:D3900V2 - SN:1048

Communication System: ; Frequency: 3900.000

Medium: HSL. Medium parameters used:  $f= 3900.000$  MHz;  $\sigma= 3.28$  S/m;  $\epsilon_r = 37.6$

Ambient Temperature: 23.1°C; Liquid Temperature: 22.9°C

#### DASY6 Configuration:

- Probe: EX3DV4 - SN7764; ConvF(6.74, 6.74, 6.74); Calibrated: 2023-10-05
- Sensor-Surface: 1.4 mm
- Electronics: DAE4 Sn1649; Calibrated: 2023-04-24
- Phantom: Twin-SAM V8.0 (30deg probe tilt); Serial: 2022
- Measurement Software: cDASY6 V6.6.0.13926

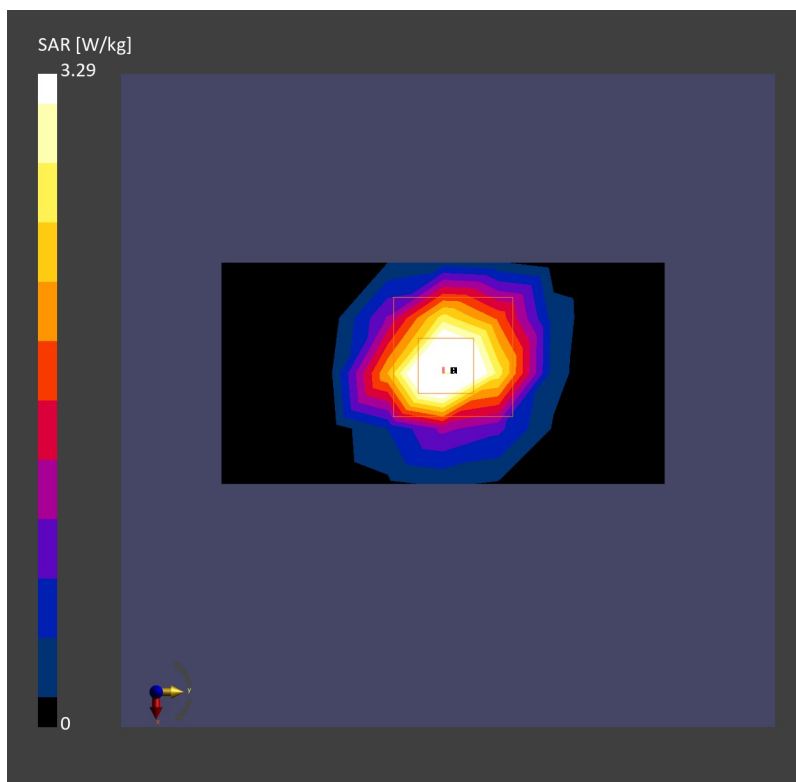
**Area Scan (40.0 mm x 80.0 mm):** Measurement Grid: 10.0 mm x 10.0 mm

SAR (1g) = 3.16 W/kg; SAR (10g) = 1.13 W/kg;

**Zoom Scan (28.0 mm x 28.0 mm x 28.0 mm):** Measurement Grid: 4.0 mm x 4.0 mm x 1.4 mm

Power Drift = -0.02 dB

SAR (1g) = 3.29 W/kg; SAR (10g) = 1.18 W/kg;



## System Check\_Head\_2450MHz

### DUT:D2450V2 - SN:1040

Communication System: ; Frequency: 2450.000

Medium: HSL. Medium parameters used:  $f= 2450.000$  MHz;  $\sigma= 1.86$  S/m;  $\epsilon_r = 38.4$

Ambient Temperature: 23.2°C; Liquid Temperature: 22.6°C

### DASY6 Configuration:

- Probe: EX3DV4 - SN7764; ConvF(8.03, 8.03, 8.03); Calibrated: 2023-10-05
- Sensor-Surface: 1.4 mm
- Electronics: DAE4 Sn1649; Calibrated: 2023-04-24
- Phantom: Twin-SAM V8.0 (30deg probe tilt); Serial: 2022
- Measurement Software: cDASY6 V6.6.0.13926

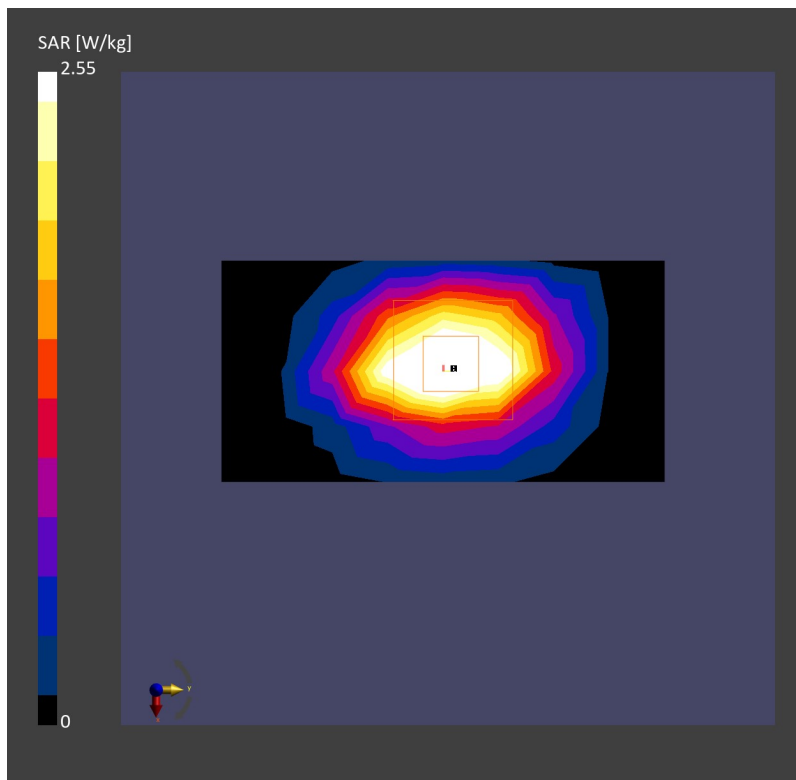
**Area Scan (40.0 mm x 80.0 mm):** Measurement Grid: 10.0 mm x 10.0 mm

SAR (1g) = 2.61 W/kg; SAR (10g) = 1.21 W/kg;

**Zoom Scan (30.0 mm x 30.0 mm x 30.0 mm):** Measurement Grid: 5.0 mm x 5.0 mm x 1.5 mm

Power Drift = -0.01 dB

SAR (1g) = 2.55 W/kg; SAR (10g) = 1.19 W/kg;



## System Check\_Head\_5250MHz

### DUT:D5GHzV2 - SN:1113

Communication System: ; Frequency: 5250.000

Medium: HSL. Medium parameters used:  $f= 5250.000$  MHz;  $\sigma= 4.57$  S/m;  $\epsilon_r = 35.5$

Ambient Temperature: 23.2°C; Liquid Temperature: 22.8°C

#### DASY6 Configuration:

- Probe: EX3DV4 - SN7764; ConvF(5.73, 5.73, 5.73); Calibrated: 2023-10-05
- Sensor-Surface: 1.4 mm
- Electronics: DAE4 Sn1649; Calibrated: 2023-04-24
- Phantom: Twin-SAM V8.0 (30deg probe tilt); Serial: 2022
- Measurement Software: cDASY6 V6.6.0.13926

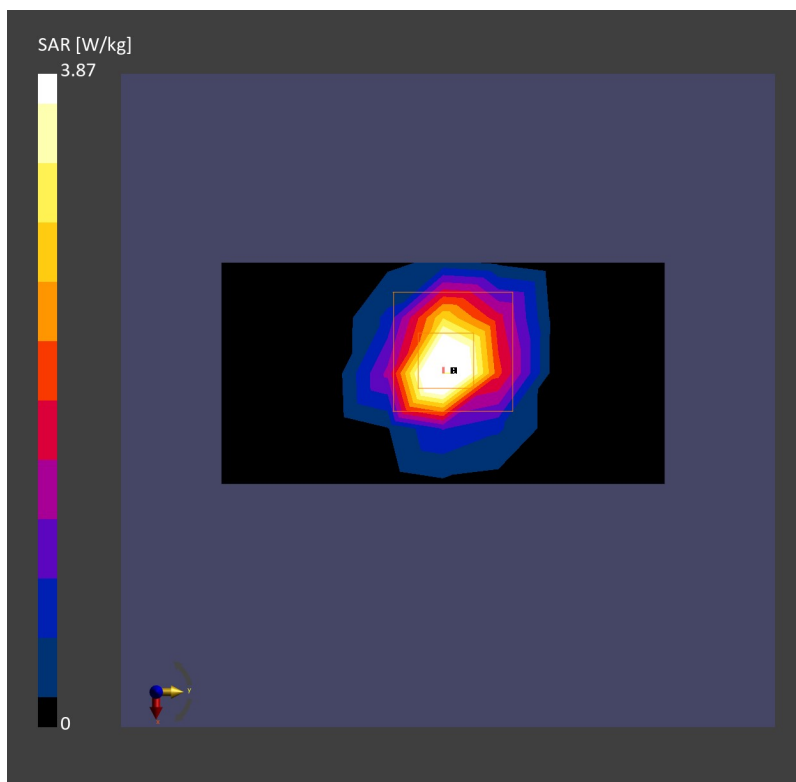
**Area Scan (40.0 mm x 80.0 mm):** Measurement Grid: 10.0 mm x 10.0 mm

SAR (1g) = 3.30 W/kg; SAR (10g) = 0.977 W/kg;

**Zoom Scan (22.0 mm x 22.0 mm x 22.0 mm):** Measurement Grid: 4.0 mm x 4.0 mm x 1.4 mm

Power Drift = 0.02 dB

SAR (1g) = 3.87 W/kg; SAR (10g) = 1.09 W/kg;





## System Check\_Head\_5600MHz

### DUT:D5GHzV2 - SN:1113

Communication System: ; Frequency: 5600.000

Medium: HSL. Medium parameters used:  $f= 5600.000$  MHz;  $\sigma= 4.95$  S/m;  $\epsilon_r = 34.8$

Ambient Temperature: 23.2°C; Liquid Temperature: 22.8°C

#### DASY6 Configuration:

- Probe: EX3DV4 - SN7764; ConvF(5.10, 5.10, 5.10); Calibrated: 2023-10-05
- Sensor-Surface: 1.4 mm
- Electronics: DAE4 Sn1649; Calibrated: 2023-04-24
- Phantom: Twin-SAM V8.0 (30deg probe tilt); Serial: 2022
- Measurement Software: cDASY6 V6.6.0.13926

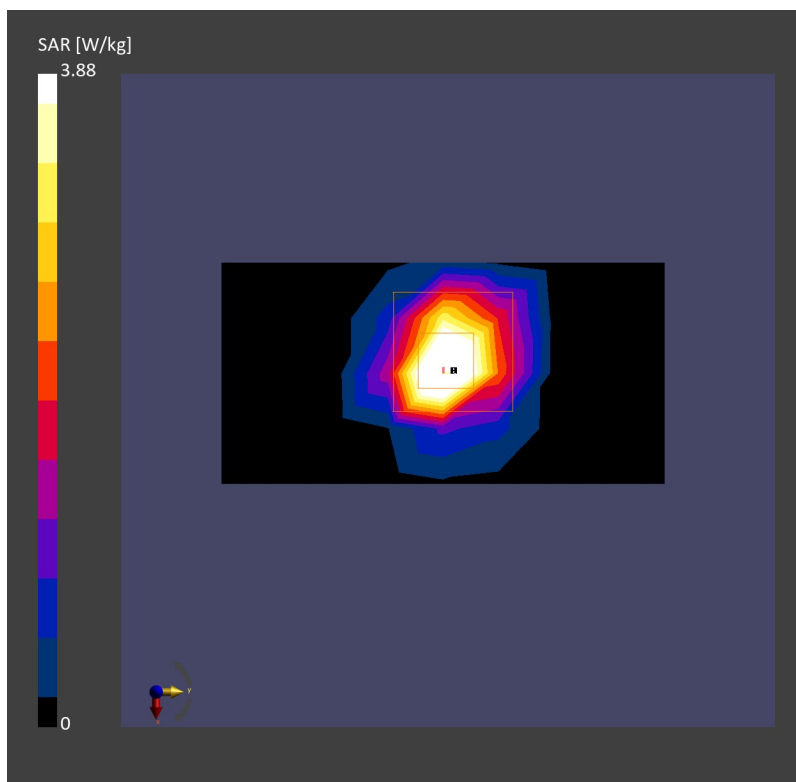
**Area Scan (40.0 mm x 80.0 mm):** Measurement Grid: 10.0 mm x 10.0 mm

SAR (1g) = 3.64 W/kg; SAR (10g) = 1.06 W/kg;

**Zoom Scan (22.0 mm x 22.0 mm x 22.0 mm):** Measurement Grid: 4.0 mm x 4.0 mm x 1.4 mm

Power Drift = 0.01 dB

SAR (1g) = 3.88 W/kg; SAR (10g) = 1.11 W/kg;



## System Check\_Head\_5750MHz

### DUT:D5GHzV2 - SN:1113

Communication System: ; Frequency: 5750.000

Medium: HSL. Medium parameters used:  $f= 5750.000$  MHz;  $\sigma= 5.13$  S/m;  $\epsilon_r = 34.6$

Ambient Temperature: 23.2°C; Liquid Temperature: 22.8°C

#### DASY6 Configuration:

- Probe: EX3DV4 - SN7764; ConvF(5.32, 5.32, 5.32); Calibrated: 2023-10-05
- Sensor-Surface: 1.4 mm
- Electronics: DAE4 Sn1649; Calibrated: 2023-04-24
- Phantom: Twin-SAM V8.0 (30deg probe tilt); Serial: 2022
- Measurement Software: cDASY6 V6.6.0.13926

**Area Scan (40.0 mm x 80.0 mm):** Measurement Grid: 10.0 mm x 10.0 mm

SAR (1g) = 3.27 W/kg; SAR (10g) = 0.960 W/kg;

**Zoom Scan (22.0 mm x 22.0 mm x 22.0 mm):** Measurement Grid: 4.0 mm x 4.0 mm x 1.4 mm

Power Drift = 0.01 dB

SAR (1g) = 3.79 W/kg; SAR (10g) = 1.08 W/kg;

