

System Check_Head_835MHz

DUT: D835V2 - SN4d167

Communication System: CW; Frequency: 835.000 MHz; Duty Cycle: 1:1

Medium: HSL_850_20231027 Medium parameters used: $f=835.000$ MHz; $\sigma=0.919$ S/m; $\epsilon_r=41.4$

Ambient Temperature: 23.5°C; Liquid Temperature: 22.5°C

DASY6 Configuration:

- Probe: EX3DV4 - SN3642; ConvF(8.70, 8.70, 8.70); Calibrated: 2023-04-26
- Sensor-Surface: 1.4 mm
- Electronics: DAE4 Sn854; Calibrated: 2023-08-17
- Phantom: Twin-SAM V5.0 (30deg probe tilt); Serial: 1884; Section: Flat
- Measurement Software: 16.2.4.2524
- UID: CW, 0--

Pin=17.0dBm/Area Scan (40.0 mm x 90.0 mm): Measurement Grid: 10.0 mm x 15.0 mm

SAR (1g) = 0.467 W/kg; SAR (10g) = 0.309 W/kg;

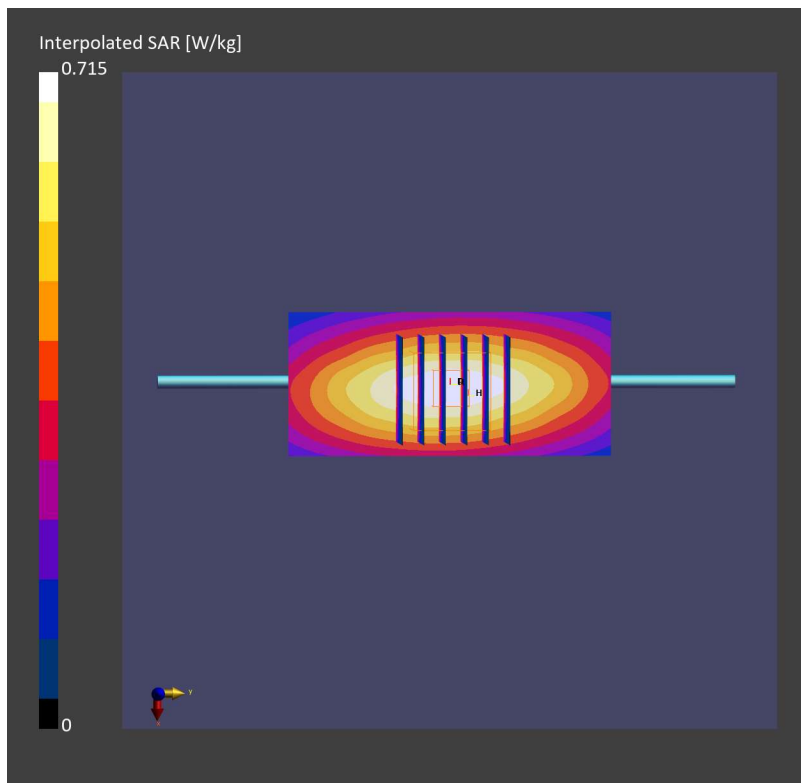
Pin=17.0dBm/Zoom Scan (30.0 mm x 30.0 mm x 30.0 mm): Measurement Grid: 6.0 mm x 6.0 mm x 1.5 mm

Power Drift = 0.11 dB

SAR (1g) = 0.468 W/kg; SAR (8g) = 0.325 W/kg; SAR (10g) = 0.307 W/kg

Smallest distance from peaks to all points 3 dB below = 18.4 mm

Ratio of SAR at M2 to SAR at M1 = 86.6 %



System Check_Head_1900MHz

DUT: D1900V2 - SN5d093

Communication System: CW; Frequency: 1900.000 MHz; Duty Cycle: 1:1

Medium: HSL_1900_20231027 Medium parameters used: $f = 1900.000$ MHz; $\sigma = 1.45$ S/m; $\epsilon_r = 39.3$

Ambient Temperature: 23.5°C; Liquid Temperature: 22.5°C

DASY6 Configuration:

- Probe: EX3DV4 - SN3642; ConvF(7.88, 7.88, 7.88); Calibrated: 2023-04-26
- Sensor-Surface: 1.4 mm
- Electronics: DAE4 Sn854; Calibrated: 2023-08-17
- Phantom: Twin-SAM V5.0 (30deg probe tilt); Serial: 1884; Section: Flat
- Measurement Software: 16.2.4.2524
- UID: CW, 0--

Pin=17.0dBm/Area Scan (40.0 mm x 90.0 mm): Measurement Grid: 10.0 mm x 15.0 mm

SAR (1g) = 1.85 W/kg; SAR (10g) = 0.991 W/kg;

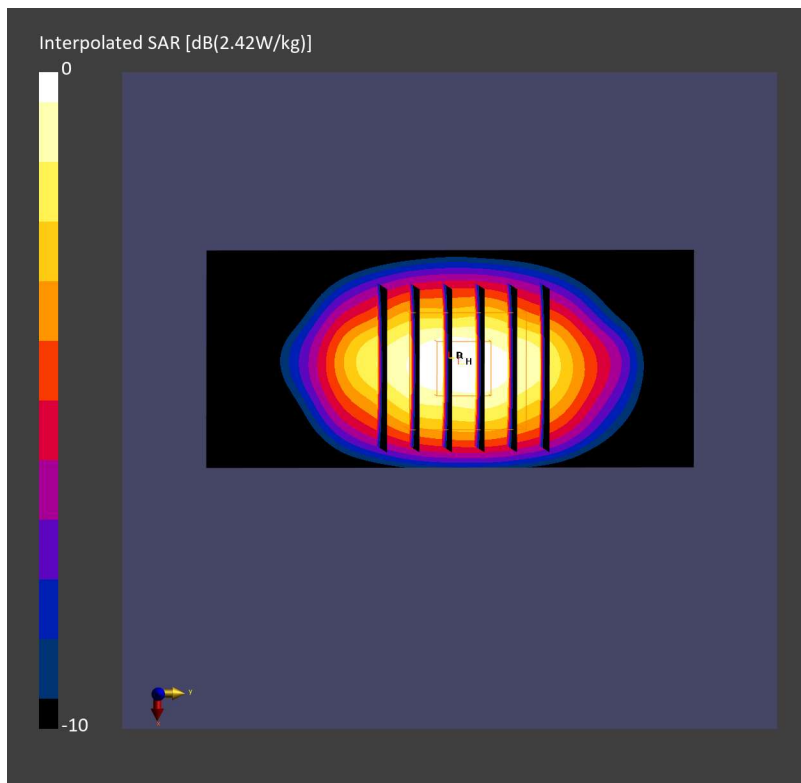
Pin=17.0dBm/Zoom Scan (30.0 mm x 30.0 mm x 30.0 mm): Measurement Grid: 6.0 mm x 6.0 mm x 1.5 mm

Power Drift = -0.08 dB

SAR (1g) = 1.86 W/kg; SAR (8g) = 1.01 W/kg; SAR (10g) = 0.979 W/kg

Smallest distance from peaks to all points 3 dB below = 10.3 mm

Ratio of SAR at M2 to SAR at M1 = 81.0 %



System Check_Head_2600MHz

DUT: D2600V2 - SN1008

Communication System: CW; Frequency: 2600.000 MHz; Duty Cycle: 1:1

Medium: HSL_2600_20231027 Medium parameters used: $f = 2600.000$ MHz; $\sigma = 1.92$ S/m; $\epsilon_r = 39.1$

Ambient Temperature: 23.5°C; Liquid Temperature: 22.5°C

DASY6 Configuration:

- Probe: EX3DV4 - SN3642; ConvF(7.20, 7.20, 7.20); Calibrated: 2023-04-26
- Sensor-Surface: 1.4 mm
- Electronics: DAE4 Sn854; Calibrated: 2023-08-17
- Phantom: Twin-SAM V5.0 (30deg probe tilt); Serial: 1884; Section: Flat
- Measurement Software: 16.2.4.2524
- UID: CW, 0--

Pin=17.0dBm/Area Scan (40.0 mm x 80.0 mm): Measurement Grid: 10.0 mm x 10.0 mm

SAR (1g) = 2.68 W/kg; SAR (10g) = 1.27 W/kg;

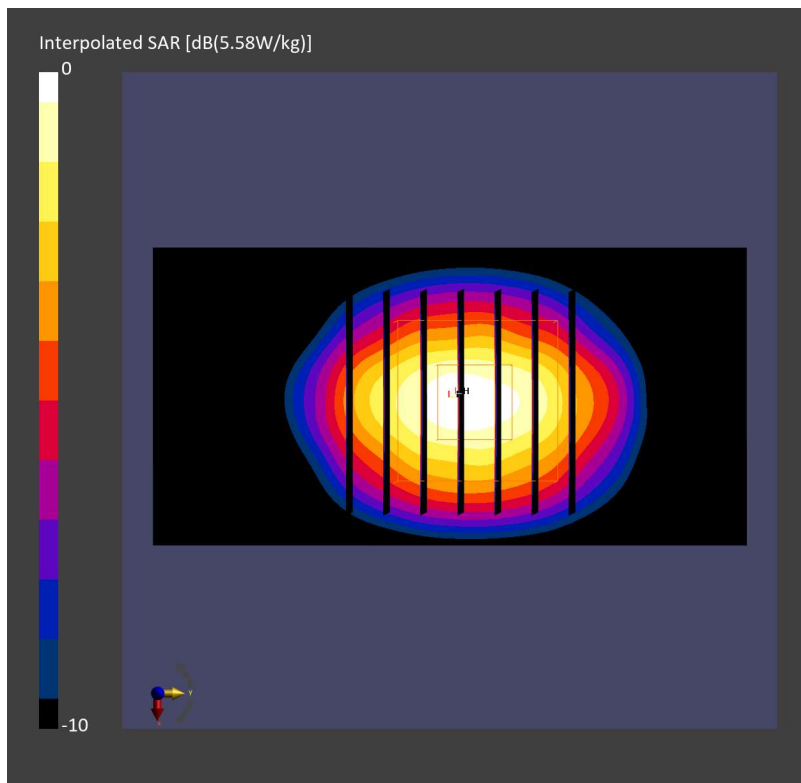
Pin=17.0dBm/Zoom Scan (30.0 mm x 30.0 mm x 30.0 mm): Measurement Grid: 5.0 mm x 5.0 mm x 1.5 mm

Power Drift = 0.09 dB

SAR (1g) = 2.67 W/kg; SAR (8g) = 1.36 W/kg; SAR (10g) = 1.24 W/kg

Smallest distance from peaks to all points 3 dB below = 9.0 mm

Ratio of SAR at M2 to SAR at M1 = 78.6 %



System Check_Head_3700MHz

DUT: D3700V2 - SN1022

Communication System: CW; Frequency: 3700.000 MHz; Duty Cycle: 1:1

Medium: HSL_3700_20231027 Medium parameters used: $f = 3700.000$ MHz; $\sigma = 3.15$ S/m; $\epsilon_r = 37.7$

Ambient Temperature: 23.5°C; Liquid Temperature: 22.5°C

DASY6 Configuration:

- Probe: EX3DV4 - SN3642; ConvF(6.42, 6.42, 6.42); Calibrated: 2023-04-26
- Sensor-Surface: 1.4 mm
- Electronics: DAE4 Sn854; Calibrated: 2023-08-17
- Phantom: Twin-SAM V5.0 (30deg probe tilt); Serial: 1884; Section: Flat
- Measurement Software: 16.2.4.2524
- UID: CW, 0--

Pin=17.0dBm/Area Scan (40.0 mm x 80.0 mm): Measurement Grid: 10.0 mm x 10.0 mm

SAR (1g) = 3.29 W/kg; SAR (10g) = 1.29 W/kg;

Pin=17.0dBm/Zoom Scan (28.0 mm x 28.0 mm x 28.0 mm): Measurement Grid: 5.0 mm x 5.0 mm x 1.4 mm

Power Drift = 0.02 dB

SAR (1g) = 3.39 W/kg; SAR (8g) = 1.48 W/kg; SAR (10g) = 1.32 W/kg

Smallest distance from peaks to all points 3 dB below = 8.3 mm

Ratio of SAR at M2 to SAR at M1 = 74.2 %

