



16.1 Head Exposure Conditions

UAT means top antenna, LAT means bottom antenna

WWAN Band		Exposure Position	1	2	3	4	1+2 Summed 1g SAR (W/kg)	1+3+4 Summed 1g SAR (W/kg)
			WWAN	2.4GHz WLAN	5GHz WLAN	Bluetooth		
			1g SAR (W/kg)	1g SAR (W/kg)	1g SAR (W/kg)	1g SAR (W/kg)		
GSM	GSM 850-UAT	Right Cheek	0.795	0.271	0.201	0.101	1.07	1.10
		Right Tilted	0.610	0.413	0.171	0.123	1.02	0.90
		Left Cheek	0.627	0.635	0.582	0.197	1.26	1.41
		Left Tilted	0.597	0.729	0.408	0.235	1.33	1.24
	GSM 850-LAT	Right Cheek	0.130	0.271	0.201	0.101	0.40	0.43
		Right Tilted	0.062	0.413	0.171	0.123	0.48	0.36
		Left Cheek	0.175	0.635	0.582	0.197	0.81	0.95
		Left Tilted	0.070	0.729	0.408	0.235	0.80	0.71
	GSM 1900-UAT	Right Cheek	1.002	0.271	0.201	0.101	1.27	1.30
		Right Tilted	0.515	0.413	0.171	0.123	0.93	0.81
		Left Cheek	0.278	0.635	0.582	0.197	0.91	1.06
		Left Tilted	0.316	0.729	0.408	0.235	1.05	0.96
	GSM 1900-LAT	Right Cheek	0.094	0.271	0.201	0.101	0.37	0.40
		Right Tilted	0.043	0.413	0.171	0.123	0.46	0.34
		Left Cheek	0.056	0.635	0.582	0.197	0.69	0.84
		Left Tilted	0.062	0.729	0.408	0.235	0.79	0.71
WCDMA	WCDMA V-UAT	Right Cheek	0.675	0.271	0.201	0.101	0.95	0.98
		Right Tilted	0.601	0.413	0.171	0.123	1.01	0.90
		Left Cheek	0.737	0.635	0.582	0.197	1.37	1.52
		Left Tilted	0.621	0.729	0.408	0.235	1.35	1.26
	WCDMA V-LAT	Right Cheek	0.168	0.271	0.201	0.101	0.44	0.47
		Right Tilted	0.088	0.413	0.171	0.123	0.50	0.38
		Left Cheek	0.255	0.635	0.582	0.197	0.89	1.03
		Left Tilted	0.104	0.729	0.408	0.235	0.83	0.75
	WCDMA IV-UAT	Right Cheek	1.040	0.271	0.201	0.101	1.31	1.34
		Right Tilted	0.534	0.413	0.171	0.123	0.95	0.83
		Left Cheek	0.362	0.635	0.582	0.197	1.00	1.14
		Left Tilted	0.348	0.729	0.408	0.235	1.08	0.99
	WCDMA IV-LAT	Right Cheek	0.231	0.271	0.201	0.101	0.50	0.53
		Right Tilted	0.141	0.413	0.171	0.123	0.55	0.44
		Left Cheek	0.164	0.635	0.582	0.197	0.80	0.94
		Left Tilted	0.125	0.729	0.408	0.235	0.85	0.77
	WCDMA II-UAT	Right Cheek	1.185	0.271	0.201	0.101	1.46	1.49
		Right Tilted	0.514	0.413	0.171	0.123	0.93	0.81
		Left Cheek	0.460	0.635	0.582	0.197	1.10	1.24
		Left Tilted	0.415	0.729	0.408	0.235	1.14	1.06



WWAN Band		Exposure Position	1	2	3	4	1+2 Summed 1g SAR (W/kg)	1+3+4 Summed 1g SAR (W/kg)
			WWAN	2.4GHz WLAN	5GHz WLAN	Bluetooth		
			1g SAR (W/kg)	1g SAR (W/kg)	1g SAR (W/kg)	1g SAR (W/kg)		
WCDMA	WCDMA II-LAT	Right Cheek	0.217	0.271	0.201	0.101	0.49	0.52
		Right Tilted	0.092	0.413	0.171	0.123	0.51	0.39
		Left Cheek	0.135	0.635	0.582	0.197	0.77	0.91
		Left Tilted	0.140	0.729	0.408	0.235	0.87	0.78
LTE	LTE Band 26-UAT	Right Cheek	0.762	0.271	0.201	0.101	1.03	1.06
		Right Tilted	0.583	0.413	0.171	0.123	1.00	0.88
		Left Cheek	0.701	0.635	0.582	0.197	1.34	1.48
		Left Tilted	0.567	0.729	0.408	0.235	1.30	1.21
	LTE Band 26-LAT	Right Cheek	0.120	0.271	0.201	0.101	0.39	0.42
		Right Tilted	0.066	0.413	0.171	0.123	0.48	0.36
		Left Cheek	0.141	0.635	0.582	0.197	0.78	0.92
		Left Tilted	0.064	0.729	0.408	0.235	0.79	0.71
	LTE Band 4-UAT	Right Cheek	0.985	0.271	0.201	0.101	1.26	1.29
		Right Tilted	0.931	0.413	0.171	0.123	1.34	1.23
		Left Cheek	0.363	0.635	0.582	0.197	1.00	1.14
		Left Tilted	0.502	0.729	0.408	0.235	1.23	1.15
	LTE Band 4-LAT	Right Cheek	0.223	0.271	0.201	0.101	0.49	0.53
		Right Tilted	0.112	0.413	0.171	0.123	0.53	0.41
		Left Cheek	0.150	0.635	0.582	0.197	0.79	0.93
		Left Tilted	0.111	0.729	0.408	0.235	0.84	0.75
	LTE Band 2-UAT	Right Cheek	1.156	0.271	0.201	0.101	1.43	1.46
		Right Tilted	0.904	0.413	0.171	0.123	1.32	1.20
		Left Cheek	0.534	0.635	0.582	0.197	1.17	1.31
		Left Tilted	0.532	0.729	0.408	0.235	1.26	1.18
	LTE Band 2-LAT	Right Cheek	0.183	0.271	0.201	0.101	0.45	0.49
		Right Tilted	0.117	0.413	0.171	0.123	0.53	0.41
		Left Cheek	0.125	0.635	0.582	0.197	0.76	0.90
		Left Tilted	0.132	0.729	0.408	0.235	0.86	0.78
	LTE Band 7-UAT	Right Cheek	0.911	0.271	0.201	0.101	1.18	1.21
		Right Tilted	0.763	0.413	0.171	0.123	1.18	1.06
		Left Cheek	0.325	0.635	0.582	0.197	0.96	1.10
		Left Tilted	0.372	0.729	0.408	0.235	1.10	1.02
	LTE Band 7-LAT	Right Cheek	0.114	0.271	0.201	0.101	0.39	0.42
		Right Tilted	0.091	0.413	0.171	0.123	0.50	0.39
		Left Cheek	0.102	0.635	0.582	0.197	0.74	0.88
		Left Tilted	0.109	0.729	0.408	0.235	0.84	0.75



WWAN Band		Exposure Position	1	2	3	4	1+2 Summed 1g SAR (W/kg)	1+3+4 Summed 1g SAR (W/kg)
			WWAN	2.4GHz WLAN	5GHz WLAN	Bluetooth		
			1g SAR (W/kg)	1g SAR (W/kg)	1g SAR (W/kg)	1g SAR (W/kg)		
LTE	LTE Band 38-UAT	Right Cheek	0.780	0.271	0.201	0.101	1.05	1.08
		Right Tilted	0.577	0.413	0.171	0.123	0.99	0.87
		Left Cheek	0.201	0.635	0.582	0.197	0.84	0.98
		Left Tilted	0.270	0.729	0.408	0.235	1.00	0.91
	LTE Band 38-LAT	Right Cheek	0.087	0.271	0.201	0.101	0.36	0.39
		Right Tilted	0.059	0.413	0.171	0.123	0.47	0.35
		Left Cheek	0.086	0.635	0.582	0.197	0.72	0.87
		Left Tilted	0.078	0.729	0.408	0.235	0.81	0.72

16.2 Hotspot Exposure Conditions

UAT means top antenna, LAT means bottom antenna

WWAN Band		Exposure Position	1	2	3	4	1+2 Summed 1g SAR (W/kg)	1+3+4 Summed 1g SAR (W/kg)
			WWAN 1g SAR (W/kg)	2.4GHz WLAN 1g SAR (W/kg)	5GHz WLAN 1g SAR (W/kg)	Bluetooth 1g SAR (W/kg)		
GSM	GSM 850-UAT	Front	0.272	0.194	0.318	0.029	0.47	0.62
		Back	0.239	0.190	0.470	0.026	0.43	0.74
		Left side	0.292				0.29	0.29
		Right side		0.040	0.127	0.024	0.04	0.15
		Top side	0.229	0.423	0.431	0.029	0.65	0.69
	GSM 850-LAT	Front	0.295	0.194	0.318	0.029	0.49	0.64
		Back	0.358	0.190	0.470	0.026	0.55	0.85
		Left side	0.186				0.19	0.19
		Right side	0.081	0.040	0.127	0.024	0.12	0.23
		Top side		0.423	0.431	0.029	0.42	0.46
	GSM 1900-UAT	Bottom side	0.203				0.20	0.20
		Front	0.099	0.194	0.318	0.029	0.29	0.45
		Back	0.110	0.190	0.470	0.026	0.30	0.61
		Left side	0.156				0.16	0.16
		Right side		0.040	0.127	0.024	0.04	0.15
	GSM 1900-LAT	Top side	0.170	0.423	0.431	0.029	0.59	0.63
		Front	0.534	0.194	0.318	0.029	0.73	0.88
		Back	0.441	0.190	0.470	0.026	0.63	0.94
		Left side	0.112				0.11	0.11
		Right side	0.100	0.040	0.127	0.024	0.14	0.25
WCDMA	WCDMA V-UAT	Top side		0.423	0.431	0.029	0.42	0.46
		Bottom side	1.181				1.18	1.18
		Front	0.530	0.194	0.318	0.029	0.72	0.88
		Back	0.468	0.190	0.470	0.026	0.66	0.96
		Left side	0.364				0.36	0.36
	WCDMA V-LAT	Right side		0.040	0.127	0.024	0.04	0.15
		Top side	0.537	0.423	0.431	0.029	0.96	1.00
		Front	0.330	0.194	0.318	0.029	0.52	0.68
		Back	0.450	0.190	0.470	0.026	0.64	0.95
		Left side	0.227				0.23	0.23
		Right side	0.052	0.040	0.127	0.024	0.09	0.20
Top side		0.423	0.431	0.029	0.42	0.46		
Bottom side	0.323				0.32	0.32		



WWAN Band		Exposure Position	1	2	3	4	1+2 Summed 1g SAR (W/kg)	1+3+4 Summed 1g SAR (W/kg)
			WWAN	2.4GHz WLAN	5GHz WLAN	Bluetooth		
			1g SAR (W/kg)	1g SAR (W/kg)	1g SAR (W/kg)	1g SAR (W/kg)		
WCDMA	WCDMA IV-UAT	Front	0.285	0.194	0.318	0.029	0.48	0.63
		Back	0.232	0.190	0.470	0.026	0.42	0.73
		Left side	0.319				0.32	0.32
		Right side		0.040	0.127	0.024	0.04	0.15
		Top side	0.338	0.423	0.431	0.029	0.76	0.80
	WCDMA IV-LAT	Front	0.577	0.194	0.318	0.029	0.77	0.92
		Back	0.634	0.190	0.470	0.026	0.82	1.13
		Left side	0.116				0.12	0.12
		Right side	0.129	0.040	0.127	0.024	0.17	0.28
		Top side		0.423	0.431	0.029	0.42	0.46
	WCDMA II-UAT	Bottom side	1.147				1.15	1.15
		Front	0.336	0.194	0.318	0.029	0.53	0.68
		Back	0.327	0.190	0.470	0.026	0.52	0.82
		Left side	0.498				0.50	0.50
		Right side		0.040	0.127	0.024	0.04	0.15
	WCDMA II-LAT	Top side	0.458	0.423	0.431	0.029	0.88	0.92
		Bottom side	1.181				1.18	1.18
		Front	0.455	0.194	0.318	0.029	0.65	0.80
		Back	0.531	0.190	0.470	0.026	0.72	1.03
		Left side	0.108				0.11	0.11
LTE	LTE Band 26-UAT	Right side	0.075	0.040	0.127	0.024	0.12	0.23
		Top side		0.423	0.431	0.029	0.42	0.46
		Bottom side	1.181				1.18	1.18
		Front	0.352	0.194	0.318	0.029	0.55	0.70
		Back	0.313	0.190	0.470	0.026	0.50	0.81
	LTE Band 26-LAT	Left side	0.257				0.26	0.26
		Right side		0.040	0.127	0.024	0.04	0.15
		Top side	0.383	0.423	0.431	0.029	0.81	0.84
		Bottom side	0.228				0.23	0.23
		Front	0.254	0.194	0.318	0.029	0.45	0.60
		Back	0.321	0.190	0.470	0.026	0.51	0.82
	LTE Band 4-UAT	Left side	0.219				0.22	0.22
		Right side	0.086	0.040	0.127	0.024	0.13	0.24
		Top side		0.423	0.431	0.029	0.42	0.46
		Bottom side	0.228				0.23	0.23
		Front	0.173	0.194	0.318	0.029	0.37	0.52
	LTE Band 4-LAT	Back	0.203	0.190	0.470	0.026	0.39	0.70
		Left side	0.237				0.24	0.24
		Right side		0.040	0.127	0.024	0.04	0.15
		Top side	0.322	0.423	0.431	0.029	0.75	0.78
Bottom side		0.228				0.23	0.23	



WWAN Band	Exposure Position	1	2	3	4	1+2 Summed 1g SAR (W/kg)	1+3+4 Summed 1g SAR (W/kg)	
		WWAN	2.4GHz WLAN	5GHz WLAN	Bluetooth			
		1g SAR (W/kg)	1g SAR (W/kg)	1g SAR (W/kg)	1g SAR (W/kg)			
LTE	LTE Band 4-LAT	Front	0.580	0.194	0.318	0.029	0.77	0.93
		Back	0.662	0.190	0.470	0.026	0.85	1.16
		Left side	0.117				0.12	0.12
		Right side	0.146	0.040	0.127	0.024	0.19	0.30
		Top side		0.423	0.431	0.029	0.42	0.46
		Bottom side	1.095				1.10	1.10
	LTE Band 2-UAT	Front	0.201	0.194	0.318	0.029	0.40	0.55
		Back	0.211	0.190	0.470	0.026	0.40	0.71
		Left side	0.293				0.29	0.29
		Right side		0.040	0.127	0.024	0.04	0.15
		Top side	0.366	0.423	0.431	0.029	0.79	0.83
	LTE Band 2-LAT	Front	0.476	0.194	0.318	0.029	0.67	0.82
		Back	0.512	0.190	0.470	0.026	0.70	1.01
		Left side	0.103				0.10	0.10
		Right side	0.095	0.040	0.127	0.024	0.14	0.25
		Top side		0.423	0.431	0.029	0.42	0.46
		Bottom side	1.103				1.10	1.10
	LTE Band 7-UAT	Front	0.443	0.194	0.318	0.029	0.64	0.79
		Back	0.454	0.190	0.470	0.026	0.64	0.95
		Left side	1.165				1.17	1.17
		Right side		0.040	0.127	0.024	0.04	0.15
		Top side	0.508	0.423	0.431	0.029	0.93	0.97
	LTE Band 7-LAT	Front	0.356	0.194	0.318	0.029	0.55	0.70
		Back	0.415	0.190	0.470	0.026	0.61	0.91
		Left side	0.157				0.16	0.16
		Right side	0.061	0.040	0.127	0.024	0.10	0.21
		Top side		0.423	0.431	0.029	0.42	0.46
		Bottom side	0.928				0.93	0.93
	LTE Band 38-UAT	Front	0.253	0.194	0.318	0.029	0.45	0.60
		Back	0.313	0.190	0.470	0.026	0.50	0.81
		Left side	0.579				0.58	0.58
		Right side		0.040	0.127	0.024	0.04	0.15
		Top side	0.364	0.423	0.431	0.029	0.79	0.82
	LTE Band 38-LAT	Front	0.424	0.194	0.318	0.029	0.62	0.77
		Back	0.456	0.190	0.470	0.026	0.65	0.95
		Left side	0.166				0.17	0.17
Right side		0.091	0.040	0.127	0.024	0.13	0.24	
Top side			0.423	0.431	0.029	0.42	0.46	
Bottom side		1.045				1.05	1.05	



16.3 Body-Worn Accessory Exposure Conditions

UAT means top antenna, LAT means bottom antenna

WWAN Band		Exposure Position	1	2	3	4	1+2 Summed 1g SAR (W/kg)	1+3+4 Summed 1g SAR (W/kg)	
			WWAN	2.4GHz WLAN	5GHz WLAN	Bluetooth			
			1g SAR (W/kg)	1g SAR (W/kg)	1g SAR (W/kg)	1g SAR (W/kg)			
GSM	GSM 850-UAT	Front	0.137	0.104	0.268	0.016	0.24	0.42	
		Back	0.128	0.104	0.268	0.014	0.23	0.41	
	GSM 850-LAT	Front	0.168	0.104	0.268	0.016	0.27	0.45	
		Back	0.198	0.104	0.268	0.014	0.30	0.48	
	GSM 1900-UAT	Front	0.055	0.104	0.268	0.016	0.16	0.34	
		Back	0.059	0.104	0.268	0.014	0.16	0.34	
	GSM 1900-LAT	Front	0.310	0.104	0.268	0.016	0.41	0.59	
		Back	0.353	0.104	0.268	0.014	0.46	0.64	
	WCDMA	WCDMA V-UAT	Front	0.216	0.104	0.268	0.016	0.32	0.50
			Back	0.199	0.104	0.268	0.014	0.30	0.48
WCDMA V-LAT		Front	0.212	0.104	0.268	0.016	0.32	0.50	
		Back	0.240	0.104	0.268	0.014	0.34	0.52	
WCDMA IV-UAT		Front	0.125	0.104	0.268	0.016	0.23	0.41	
		Back	0.135	0.104	0.268	0.014	0.24	0.42	
WCDMA IV-LAT		Front	0.723	0.104	0.268	0.016	0.83	1.01	
		Back	0.895	0.104	0.268	0.014	1.00	1.18	
WCDMA II-UAT		Front	0.163	0.104	0.268	0.016	0.27	0.45	
		Back	0.176	0.104	0.268	0.014	0.28	0.46	
WCDMA II-LAT		Front	0.682	0.104	0.268	0.016	0.79	0.97	
		Back	0.785	0.104	0.268	0.014	0.89	1.07	
LTE		LTE Band 26-UAT	Front	0.131	0.104	0.268	0.016	0.24	0.42
			Back	0.133	0.104	0.268	0.014	0.24	0.42
	LTE Band 26-LAT	Front	0.145	0.104	0.268	0.016	0.25	0.43	
		Back	0.175	0.104	0.268	0.014	0.28	0.46	
	LTE Band 4-UAT	Front	0.070	0.104	0.268	0.016	0.17	0.35	
		Back	0.087	0.104	0.268	0.014	0.19	0.37	
	LTE Band 4-LAT	Front	0.587	0.104	0.268	0.016	0.69	0.87	
		Back	0.720	0.104	0.268	0.014	0.82	1.00	
	LTE Band 2-UAT	Front	0.115	0.104	0.268	0.016	0.22	0.40	
		Back	0.131	0.104	0.268	0.014	0.24	0.41	
	LTE Band 2-LAT	Front	0.569	0.104	0.268	0.016	0.67	0.85	
		Back	0.655	0.104	0.268	0.014	0.76	0.94	
	LTE Band 7-UAT	Front	0.219	0.104	0.268	0.016	0.32	0.50	
		Back	0.251	0.104	0.268	0.014	0.36	0.53	
	LTE Band 7-LAT	Front	0.705	0.104	0.268	0.016	0.81	0.99	
		Back	1.055	0.104	0.268	0.014	1.16	1.34	



WWAN Band		Exposure Position	1	2	3	4	1+2 Summed 1g SAR (W/kg)	1+3+4 Summed 1g SAR (W/kg)
			WWAN	2.4GHz WLAN	5GHz WLAN	Bluetooth		
			1g SAR (W/kg)	1g SAR (W/kg)	1g SAR (W/kg)	1g SAR (W/kg)		
LTE	LTE Band 38-UAT	Front	0.130	0.104	0.268	0.016	0.23	0.41
		Back	0.145	0.104	0.268	0.014	0.25	0.43
	LTE Band 38-LAT	Front	0.451	0.104	0.268	0.016	0.56	0.74
		Back	0.522	0.104	0.268	0.014	0.63	0.80



16.4 Product specific 10g SAR Exposure Conditions

UAT means top antenna, LAT means bottom antenna

WWAN Band		Exposure Position	1	2	1+2 Summed 10g SAR (W/kg)
			WWAN	5GHz WLAN	
			10g SAR (W/kg)	10g SAR (W/kg)	
GSM	GSM 1900-LAT	Front		1.189	1.19
		Back		0.729	0.73
		Right side		0.198	0.20
		Top side		0.756	0.76
		Bottom side	3.194		3.19
CDMA	WCDMA II-LAT	Front		1.189	1.19
		Back		0.729	0.73
		Right side		0.198	0.20
		Top side		0.756	0.76
		Bottom side	3.600		3.60
LTE	LTE Band 2-LAT	Front		1.189	1.19
		Back		0.729	0.73
		Right side		0.198	0.20
		Top side		0.756	0.76
		Bottom side	2.831		2.83

Remark:

1. For Bluetooth Product specific 10g stand-alone SAR is not required for a transmitter or antenna, due to 1g hotspot SAR is <1.2W/kg.
2. If SPLSR ≤ 0.10 for 10g SAR, simultaneously transmission SAR measurement is not necessary.

Test Engineer : Nick Hu, Yuan Zhao, Jiaying Chang, Yuankai Kong

17. Uncertainty Assessment

The component of uncertainty may generally be categorized according to the methods used to evaluate them. The evaluation of uncertainty by the statistical analysis of a series of observations is termed a Type A evaluation of uncertainty. The evaluation of uncertainty by means other than the statistical analysis of a series of observation is termed a Type B evaluation of uncertainty. Each component of uncertainty, however evaluated, is represented by an estimated standard deviation, termed standard uncertainty, which is determined by the positive square root of the estimated variance.

A Type A evaluation of standard uncertainty may be based on any valid statistical method for treating data. This includes calculating the standard deviation of the mean of a series of independent observations; using the method of least squares to fit a curve to the data in order to estimate the parameter of the curve and their standard deviations; or carrying out an analysis of variance in order to identify and quantify random effects in certain kinds of measurement.

A type B evaluation of standard uncertainty is typically based on scientific judgment using all of the relevant information available. These may include previous measurement data, experience, and knowledge of the behavior and properties of relevant materials and instruments, manufacture’s specification, data provided in calibration reports and uncertainties assigned to reference data taken from handbooks. Broadly speaking, the uncertainty is either obtained from an outdoor source or obtained from an assumed distribution, such as the normal distribution, rectangular or triangular distributions indicated in table below.

Uncertainty Distributions	Normal	Rectangular	Triangular	U-Shape
Multi-plying Factor ^(a)	1/k ^(b)	1/√3	1/√6	1/√2

(a) standard uncertainty is determined as the product of the multiplying factor and the estimated range of variations in the measured quantity

(b) κ is the coverage factor

Table 17.1. Standard Uncertainty for Assumed Distribution

The combined standard uncertainty of the measurement result represents the estimated standard deviation of the result. It is obtained by combining the individual standard uncertainties of both Type A and Type B evaluation using the usual “root-sum-squares” (RSS) methods of combining standard deviations by taking the positive square root of the estimated variances.

Expanded uncertainty is a measure of uncertainty that defines an interval about the measurement result within which the measured value is confidently believed to lie. It is obtained by multiplying the combined standard uncertainty by a coverage factor. Typically, the coverage factor ranges from 2 to 3. Using a coverage factor allows the true value of a measured quantity to be specified with a defined probability within the specified uncertainty range. For purpose of this document, a coverage factor two is used, which corresponds to confidence interval of about 95 %. The DASY uncertainty Budget is shown in the following tables.

Error Description	Uncertainty Value (±%)	Probability	Divisor	(Ci) 1g	(Ci) 10g	Standard Uncertainty (1g) (±%)	Standard Uncertainty (10g) (±%)
Measurement System							
Probe Calibration	6.0	N	1	1	1	6.0	6.0
Axial Isotropy	4.7	R	1.732	0.7	0.7	1.9	1.9
Hemispherical Isotropy	9.6	R	1.732	0.7	0.7	3.9	3.9
Boundary Effects	1.0	R	1.732	1	1	0.6	0.6
Linearity	4.7	R	1.732	1	1	2.7	2.7
System Detection Limits	1.0	R	1.732	1	1	0.6	0.6
Modulation Response	3.1	R	1.732	1	1	1.8	1.8
Readout Electronics	0.3	N	1	1	1	0.3	0.3
Response Time	0.0	R	1.732	1	1	0.0	0.0
Integration Time	2.6	R	1.732	1	1	1.5	1.5
RF Ambient Noise	3.0	R	1.732	1	1	1.7	1.7
RF Ambient Reflections	3.0	R	1.732	1	1	1.7	1.7
Probe Positioner	0.4	R	1.732	1	1	0.2	0.2
Probe Positioning	2.9	R	1.732	1	1	1.7	1.7
Max. SAR Eval.	2.0	R	1.732	1	1	1.2	1.2
Test Sample Related							
Device Positioning	3.4	N	1	1	1	3.4	3.4
Device Holder	3.4	N	1	1	1	3.4	3.4
Power Drift	5.0	R	1.732	1	1	2.9	2.9
Power Scaling	0.0	R	1.732	1	1	0.0	0.0
Phantom and Setup							
Phantom Uncertainty	6.1	R	1.732	1	1	3.5	3.5
SAR correction	0.0	R	1.732	1	0.84	0.0	0.0
Liquid Conductivity Repeatability	0.1	N	1	0.78	0.71	0.1	0.1
Liquid Conductivity (target)	5.0	R	1.732	0.78	0.71	2.3	2.0
Liquid Conductivity (mea.)	2.5	R	1.732	0.78	0.71	1.1	1.0
Temp. unc. - Conductivity	3.4	R	1.732	0.78	0.71	1.5	1.4
Liquid Permittivity Repeatability	0.10	N	1	0.23	0.26	0.0	0.0
Liquid Permittivity (target)	5.0	R	1.732	0.23	0.26	0.7	0.8
Liquid Permittivity (mea.)	2.5	R	1.732	0.23	0.26	0.3	0.4
Temp. unc. - Permittivity	0.59	R	1.732	0.23	0.26	0.1	0.1
Combined Std. Uncertainty						11.5%	11.4%
Coverage Factor for 95 %						K=2	K=2
Expanded STD Uncertainty						22.9%	22.8%

Table 17.2. Uncertainty Budget for frequency range 300 MHz to 3 GHz

Error Description	Uncertainty Value (±%)	Probability	Divisor	(Ci) 1g	(Ci) 10g	Standard Uncertainty (1g) (±%)	Standard Uncertainty (10g) (±%)
Measurement System							
Probe Calibration	6.55	N	1	1	1	6.6	6.6
Axial Isotropy	4.7	R	1.732	0.7	0.7	1.9	1.9
Hemispherical Isotropy	9.6	R	1.732	0.7	0.7	3.9	3.9
Boundary Effects	2.0	R	1.732	1	1	1.2	1.2
Linearity	4.7	R	1.732	1	1	2.7	2.7
System Detection Limits	1.0	R	1.732	1	1	0.6	0.6
Modulation Response	3.2	R	1.732	1	1	1.8	1.8
Readout Electronics	0.3	N	1	1	1	0.3	0.3
Response Time	0.0	R	1.732	1	1	0.0	0.0
Integration Time	2.6	R	1.732	1	1	1.5	1.5
RF Ambient Noise	3.0	R	1.732	1	1	1.7	1.7
RF Ambient Reflections	3.0	R	1.732	1	1	1.7	1.7
Probe Positioner	0.4	R	1.732	1	1	0.2	0.2
Probe Positioning	6.7	R	1.732	1	1	3.9	3.9
Max. SAR Eval.	4.0	R	1.732	1	1	2.3	2.3
Test Sample Related							
Device Positioning	3.0	N	1	1	1	3.0	3.0
Device Holder	3.6	N	1	1	1	3.6	3.6
Power Drift	5.0	R	1.732	1	1	2.9	2.9
Power Scaling	0.0	R	1.732	1	1	0.0	0.0
Phantom and Setup							
Phantom Uncertainty	6.6	R	1.732	1	1	3.8	3.8
SAR correction	0.0	R	1.732	1	0.84	0.0	0.0
Liquid Conductivity Repeatability	0.2	N	1	0.78	0.71	0.1	0.1
Liquid Conductivity (target)	5.0	R	1.732	0.78	0.71	2.3	2.0
Liquid Conductivity (mea.)	2.5	R	1.732	0.78	0.71	1.1	1.0
Temp. unc. - Conductivity	3.4	R	1.732	0.78	0.71	1.5	1.4
Liquid Permittivity Repeatability	0.15	N	1	0.23	0.26	0.0	0.0
Liquid Permittivity (target)	5.0	R	1.732	0.23	0.26	0.7	0.8
Liquid Permittivity (mea.)	2.5	R	1.732	0.23	0.26	0.3	0.4
Temp. unc. - Permittivity	0.83	R	1.732	0.23	0.26	0.1	0.1
Combined Std. Uncertainty						12.5%	12.5%
Coverage Factor for 95 %						K=2	K=2
Expanded STD Uncertainty						25.0%	24.9%

Table 17.3. Uncertainty Budget of DASY5 for frequency range 3 GHz to 6 GHz



18. References

- [1] FCC 47 CFR Part 2 "Frequency Allocations and Radio Treaty Matters; General Rules and Regulations"
- [2] ANSI/IEEE Std. C95.1-1992, "IEEE Standard for Safety Levels with Respect to Human Exposure to Radio Frequency Electromagnetic Fields, 3 kHz to 300 GHz", September 1992
- [3] IEEE Std. 1528-2013, "IEEE Recommended Practice for Determining the Peak Spatial-Average Specific Absorption Rate (SAR) in the Human Head from Wireless Communications Devices: Measurement Techniques", Sep 2013
- [4] SPEAG DASY System Handbook
- [5] FCC KDB 865664 D01 v01r04, "SAR Measurement Requirements for 100 MHz to 6 GHz", Aug 2015.
- [6] FCC KDB 865664 D02 v01r02, "RF Exposure Compliance Reporting and Documentation Considerations" Oct 2015.
- [7] FCC KDB 248227 D01 v02r02, "SAR Guidance for IEEE 802.11 (WiFi) Transmitters", Oct 2015.
- [8] FCC KDB 447498 D01 v06, "Mobile and Portable Device RF Exposure Procedures and Equipment Authorization Policies", Oct 2015
- [9] FCC KDB 648474 D04 v01r03, "SAR Evaluation Considerations for Wireless Handsets", Oct 2015.
- [10] FCC KDB 941225 D01 v03r01, "3G SAR MEAUREMENT PROCEDURES", Oct 2015
- [11] FCC KDB 941225 D05 v02r05, "SAR Evaluation Considerations for LTE Devices", Dec 2015
- [12] FCC KDB 941225 D06 v02r01, "SAR Evaluation Procedures for Portable Devices with Wireless Router Capabilities", Oct 2015.

-----THE END-----



Appendix A. Plots of System Performance Check

The plots are shown as follows.

System Check_Head_835MHz

DUT: D835V2 - SN:4d151

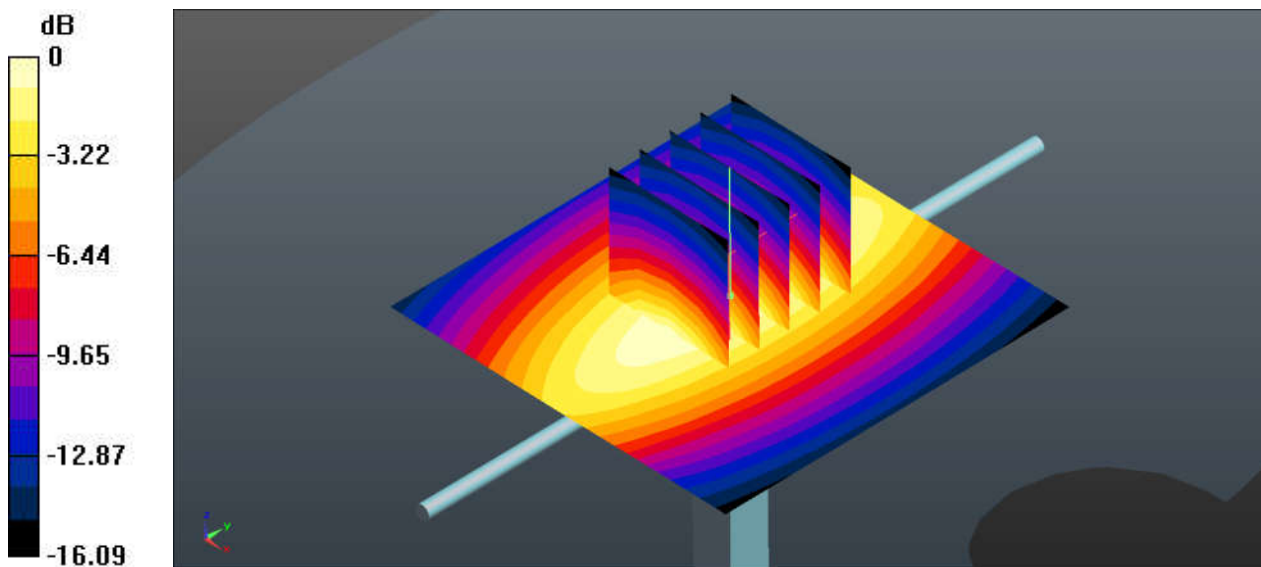
Communication System: UID 0, CW (0); Frequency: 835 MHz; Duty Cycle: 1:1
Medium: HSL_835 Medium parameters used: $f = 835 \text{ MHz}$; $\sigma = 0.925 \text{ S/m}$; $\epsilon_r = 41.159$; $\rho = 1000 \text{ kg/m}^3$
Ambient Temperature : $23.3 \text{ }^\circ\text{C}$; Liquid Temperature : $22.7 \text{ }^\circ\text{C}$

DASY5 Configuration:

- Probe: EX3DV4 - SN3857; ConvF(9.48, 9.48, 9.48); Calibrated: 2019.5.27
- Sensor-Surface: 1.4mm (Mechanical Surface Detection)
- Electronics: DAE4 Sn1210; Calibrated: 2019.7.23
- Phantom: SAM1; Type: SAM; Serial: TP-1697
- Measurement SW: DASY52, Version 52.10 (1); SEMCAD X Version 14.6.11 (7439)

Pin=250mW/Area Scan (61x61x1): Interpolated grid: $dx=1.500 \text{ mm}$, $dy=1.500 \text{ mm}$
Maximum value of SAR (interpolated) = 4.01 W/kg

Pin=250mW/Zoom Scan (5x5x7)/Cube 0: Measurement grid: $dx=8\text{mm}$, $dy=8\text{mm}$, $dz=5\text{mm}$
Reference Value = 67.31 V/m ; Power Drift = 0.05 dB
Peak SAR (extrapolated) = 4.55 W/kg
SAR(1 g) = 2.22 W/kg ; SAR(10 g) = 1.48 W/kg
Maximum value of SAR (measured) = 4.04 W/kg



0 dB = 4.01 W/kg = 6.03 dBW/kg

System Check_Head_1750MHz

DUT: D1750V2 - SN:1090

Communication System: UID 0, CW (0); Frequency: 1750 MHz; Duty Cycle: 1:1
Medium: HSL_1750 Medium parameters used: $f = 1750$ MHz; $\sigma = 1.368$ S/m; $\epsilon_r = 41.38$; $\rho = 1000$ kg/m³
Ambient Temperature : 23.4 °C; Liquid Temperature : 22.8 °C

DASY5 Configuration:

- Probe: EX3DV4 - SN3857; ConvF(8.46, 8.46, 8.46); Calibrated: 2019.5.27
- Sensor-Surface: 1.4mm (Mechanical Surface Detection)
- Electronics: DAE4 Sn1210; Calibrated: 2019.7.23
- Phantom: SAM1; Type: SAM; Serial: TP-1697
- Measurement SW: DASY52, Version 52.10 (1); SEMCAD X Version 14.6.11 (7439)

Pin=250mW/Area Scan (61x61x1): Interpolated grid: dx=1.500 mm, dy=1.500 mm

Maximum value of SAR (interpolated) = 12.8 W/kg

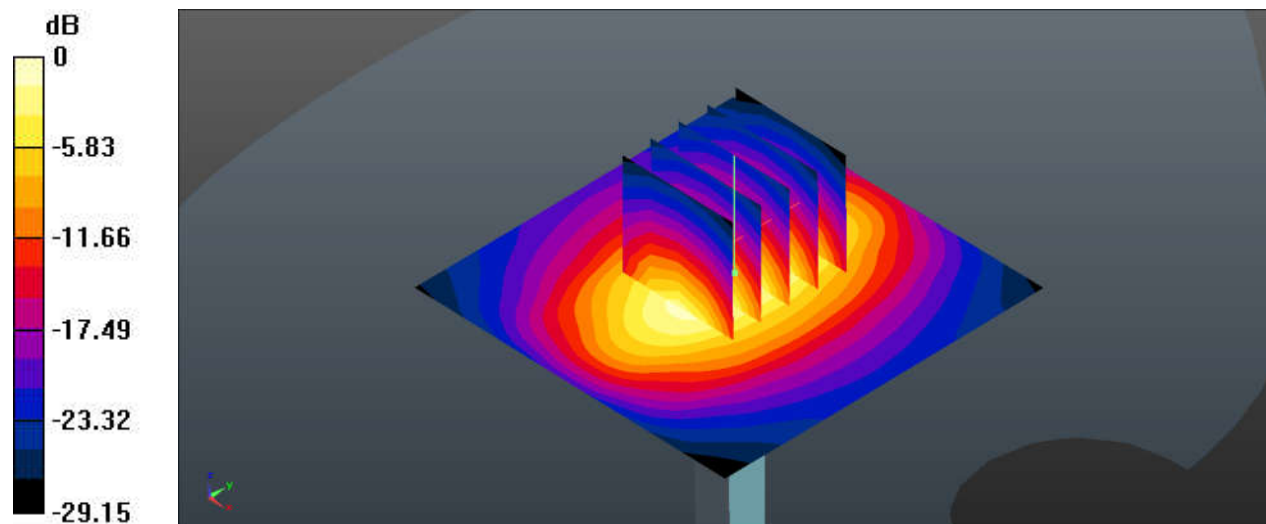
Pin=250mW/Zoom Scan (5x5x7)/Cube 0: Measurement grid: dx=8mm, dy=8mm, dz=5mm

Reference Value = 83.79 V/m; Power Drift = 0.05 dB

Peak SAR (extrapolated) = 16.2 W/kg

SAR(1 g) = 8.93 W/kg; SAR(10 g) = 4.75 W/kg

Maximum value of SAR (measured) = 12.8 W/kg



0 dB = 12.8 W/kg = 11.07 dBW/kg

System Check_Head_1900MHz

DUT: D1900V2 - SN:5d170

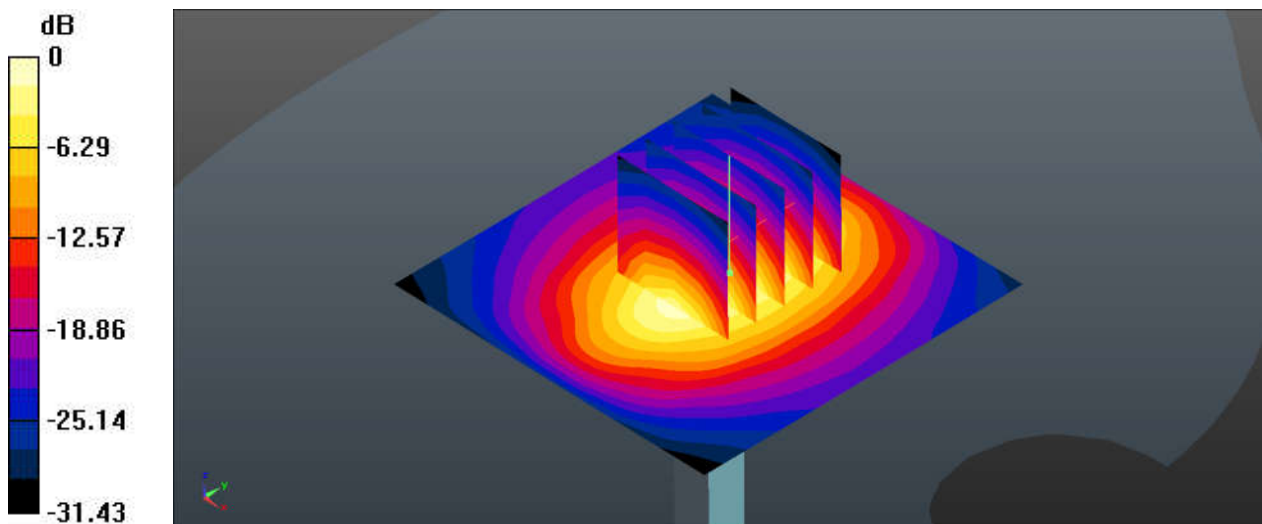
Communication System: UID 0, CW (0); Frequency: 1900 MHz; Duty Cycle: 1:1
Medium: HSL_1900 Medium parameters used: $f = 1900$ MHz; $\sigma = 1.429$ S/m; $\epsilon_r = 39.827$; $\rho = 1000$ kg/m³
Ambient Temperature : 23.3 °C; Liquid Temperature : 22.7 °C

DASY5 Configuration:

- Probe: EX3DV4 - SN3857; ConvF(8.1, 8.1, 8.1); Calibrated: 2019.5.27
- Sensor-Surface: 1.4mm (Mechanical Surface Detection)
- Electronics: DAE4 Sn1210; Calibrated: 2019.7.23
- Phantom: SAM1; Type: SAM; Serial: TP-1697
- Measurement SW: DASY52, Version 52.10 (1); SEMCAD X Version 14.6.11 (7439)

Pin=250mW/Area Scan (61x61x1): Interpolated grid: dx=1.500 mm, dy=1.500 mm
Maximum value of SAR (interpolated) = 15.0 W/kg

Pin=250mW/Zoom Scan (5x5x7)/Cube 0: Measurement grid: dx=8mm, dy=8mm, dz=5mm
Reference Value = 88.67 V/m; Power Drift = -0.05 dB
Peak SAR (extrapolated) = 18.9 W/kg
SAR(1 g) = 10 W/kg; SAR(10 g) = 5.13 W/kg
Maximum value of SAR (measured) = 14.6 W/kg



0 dB = 15.0 W/kg = 11.76 dBW/kg

System Check_Head_2450MHz

DUT: D2450V2 - SN:908

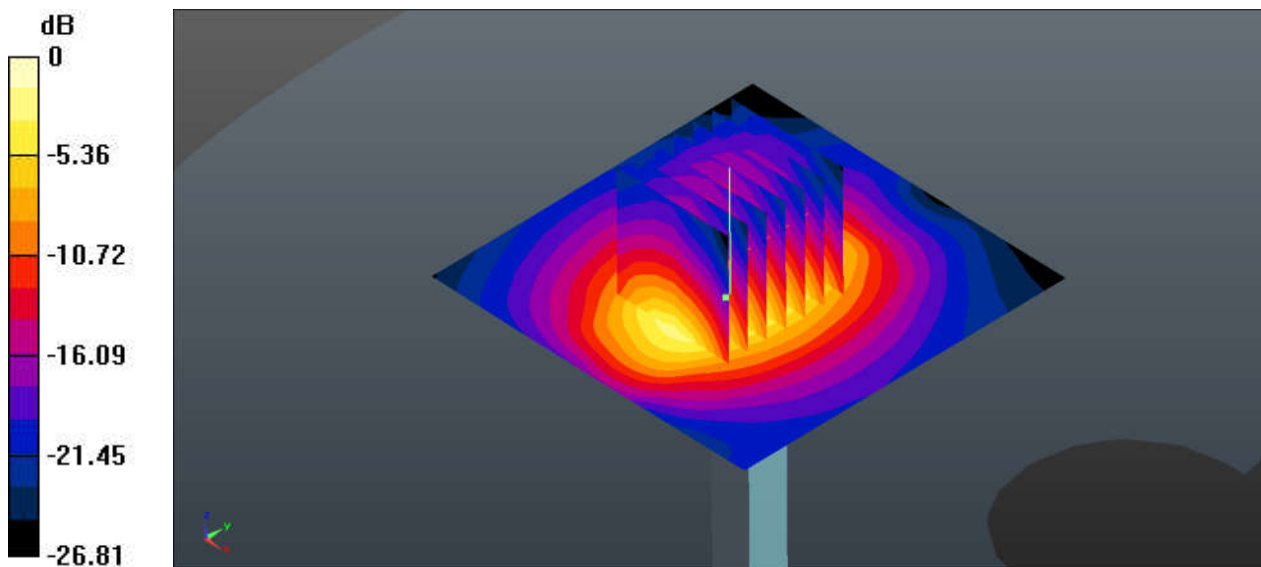
Communication System: UID 0, CW (0); Frequency: 2450 MHz;Duty Cycle: 1:1
Medium: HSL_2450 Medium parameters used: $f = 2450$ MHz; $\sigma = 1.869$ S/m; $\epsilon_r = 38.887$; $\rho = 1000$ kg/m³
Ambient Temperature : 23.3 °C; Liquid Temperature : 22.3 °C

DASY5 Configuration:

- Probe: EX3DV4 - SN3857; ConvF(7.5, 7.5, 7.5); Calibrated: 2019.5.27
- Sensor-Surface: 1.4mm (Mechanical Surface Detection)
- Electronics: DAE4 Sn1210; Calibrated: 2019.7.23
- Phantom: SAM1; Type: SAM; Serial: TP-1697
- Measurement SW: DASY52, Version 52.10 (1); SEMCAD X Version 14.6.11 (7439)

Pin=250mW/Area Scan (71x71x1): Interpolated grid: dx=1.200 mm, dy=1.200 mm
Maximum value of SAR (interpolated) = 21.3 W/kg

Pin=250mW/Zoom Scan (7x7x7)/Cube 0: Measurement grid: dx=5mm, dy=5mm, dz=5mm
Reference Value = 87.87 V/m; Power Drift = -0.07 dB
Peak SAR (extrapolated) = 27.7 W/kg
SAR(1 g) = 13.6 W/kg; SAR(10 g) = 6.27 W/kg
Maximum value of SAR (measured) = 21.3 W/kg



0 dB = 21.3 W/kg = 13.28 dBW/kg

System Check_Head_2600MHz

DUT: D2600V2 - SN:1061

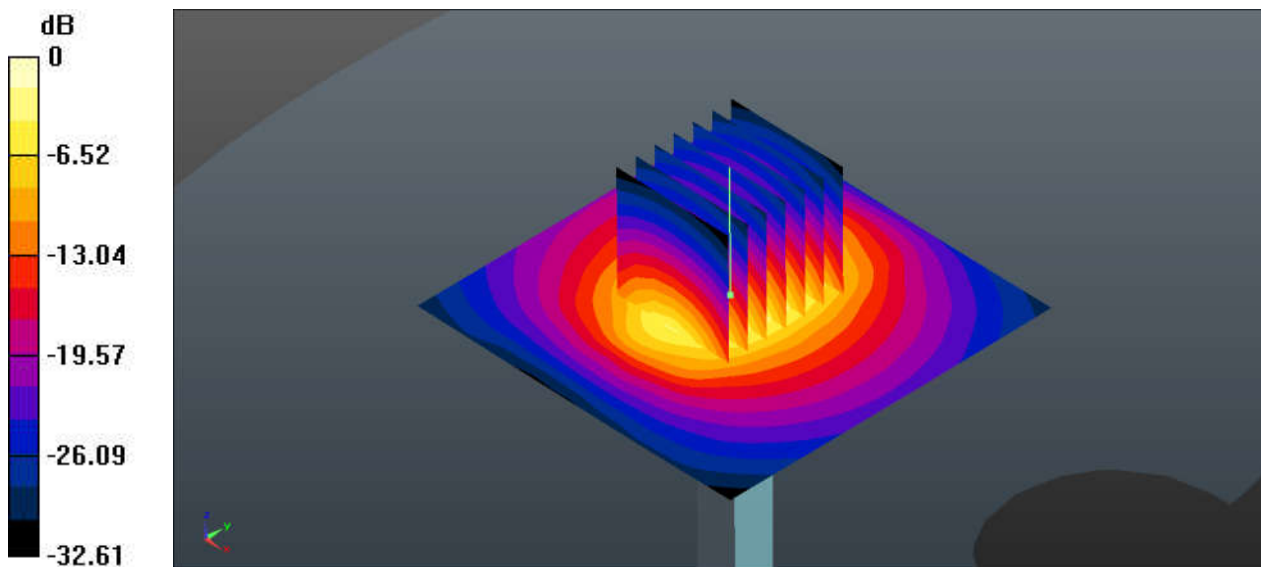
Communication System: UID 0, CW (0); Frequency: 2600 MHz;Duty Cycle: 1:1
Medium: HSL_2600 Medium parameters used: $f = 2600$ MHz; $\sigma = 2.048$ S/m; $\epsilon_r = 38.258$; $\rho = 1000$ kg/m³
Ambient Temperature : 23.3 °C; Liquid Temperature : 22.2 °C

DASY5 Configuration:

- Probe: EX3DV4 - SN3857; ConvF(7.31, 7.31, 7.31); Calibrated: 2019.5.27
- Sensor-Surface: 1.4mm (Mechanical Surface Detection)
- Electronics: DAE4 Sn1210; Calibrated: 2019.7.23
- Phantom: SAM1; Type: SAM; Serial: TP-1697
- Measurement SW: DASY52, Version 52.10 (1); SEMCAD X Version 14.6.11 (7439)

Pin=250mW/Area Scan (71x71x1): Interpolated grid: dx=1.200 mm, dy=1.200 mm
Maximum value of SAR (interpolated) = 23.0 W/kg

Pin=250mW/Zoom Scan (7x7x7)/Cube 0: Measurement grid: dx=5mm, dy=5mm, dz=5mm
Reference Value = 83.21 V/m; Power Drift = 0.17 dB
Peak SAR (extrapolated) = 32.0 W/kg
SAR(1 g) = 14 W/kg; SAR(10 g) = 6.36 W/kg
Maximum value of SAR (measured) = 22.6 W/kg



0 dB = 23.0 W/kg = 13.62 dBW/kg

System Check_Head_5250MHz

DUT: D5GHzV2 - SN:1128

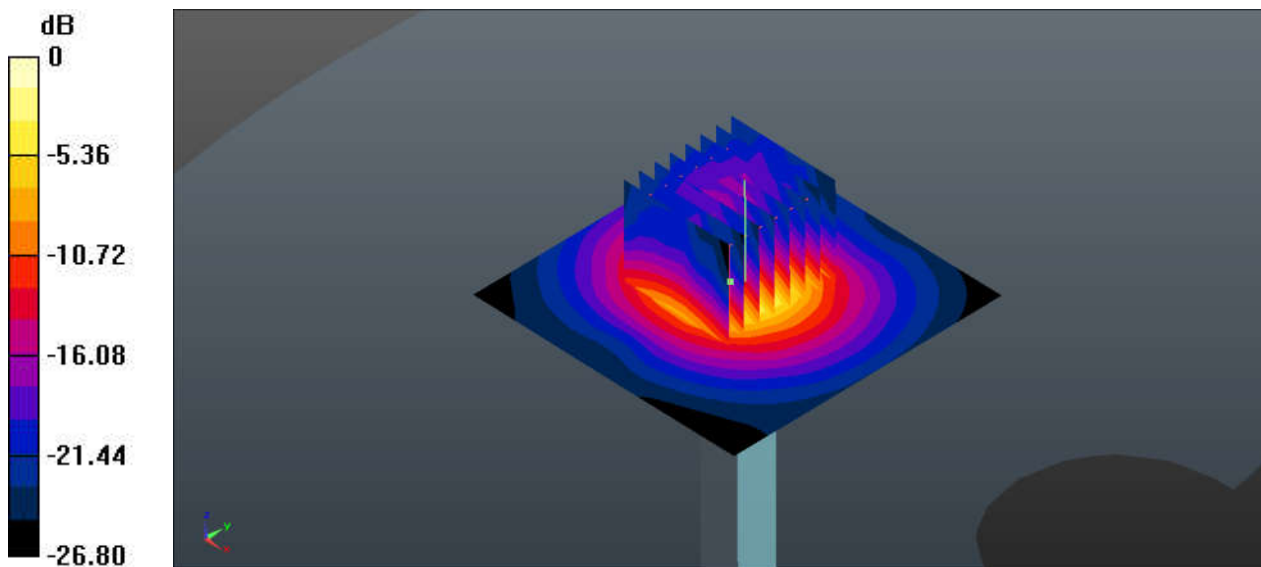
Communication System: UID 0, CW (0); Frequency: 5250 MHz; Duty Cycle: 1:1
Medium: HSL_5000 Medium parameters used: $f = 5250$ MHz; $\sigma = 4.555$ S/m; $\epsilon_r = 34.771$; $\rho = 1000$ kg/m³
Ambient Temperature : 23.3 °C ; Liquid Temperature : 22.3 °C

DASY5 Configuration:

- Probe: EX3DV4 - SN3857; ConvF(5.19, 5.19, 5.19); Calibrated: 2019.5.27
- Sensor-Surface: 1.4mm (Mechanical Surface Detection)
- Electronics: DAE4 Sn1210; Calibrated: 2019.7.23
- Phantom: SAM1; Type: SAM; Serial: TP-1697
- Measurement SW: DASY52, Version 52.10 (1); SEMCAD X Version 14.6.11 (7439)

Pin=100mW/Area Scan (71x71x1): Interpolated grid: dx=1.000 mm, dy=1.000 mm
Maximum value of SAR (interpolated) = 18.0 W/kg

Pin=100mW/Zoom Scan (8x8x7)/Cube 0: Measurement grid: dx=4mm, dy=4mm, dz=1.4mm
Reference Value = 40.05 V/m; Power Drift = 0.06 dB
Peak SAR (extrapolated) = 29.0 W/kg
SAR(1 g) = 7.81 W/kg; SAR(10 g) = 2.27 W/kg
Maximum value of SAR (measured) = 17.8 W/kg



0 dB = 18.0 W/kg = 12.55 dBW/kg

System Check_Head_5600MHz

DUT: D5GHzV2 - SN:1128

Communication System: UID 0, CW (0); Frequency: 5600 MHz; Duty Cycle: 1:1
Medium: HSL_5000 Medium parameters used: $f = 5600$ MHz; $\sigma = 4.897$ S/m; $\epsilon_r = 34.296$; $\rho = 1000$ kg/m³
Ambient Temperature : 23.3 °C; Liquid Temperature : 22.3 °C

DASY5 Configuration:

- Probe: EX3DV4 - SN3857; ConvF(4.92, 4.92, 4.92); Calibrated: 2019.5.27
- Sensor-Surface: 1.4mm (Mechanical Surface Detection)
- Electronics: DAE4 Sn1210; Calibrated: 2019.7.23
- Phantom: SAM1; Type: SAM; Serial: TP-1697
- Measurement SW: DASY52, Version 52.10 (1); SEMCAD X Version 14.6.11 (7439)

Pin=100mW/Area Scan (91x91x1): Interpolated grid: dx=1.000 mm, dy=1.000 mm

Maximum value of SAR (interpolated) = 21.0 W/kg

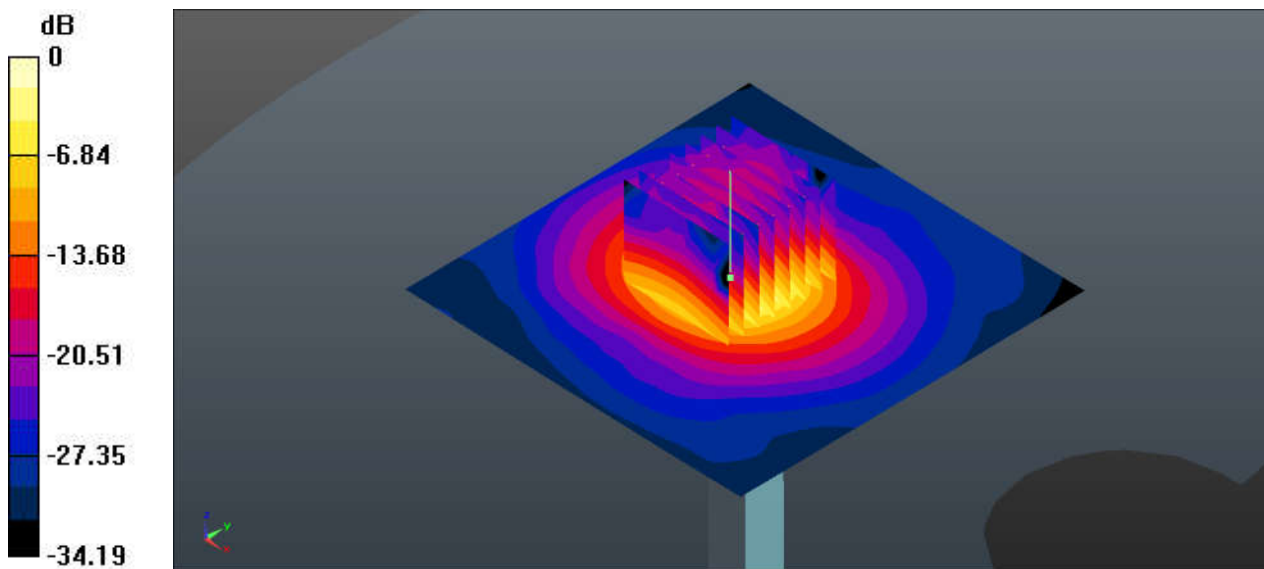
Pin=100mW/Zoom Scan (8x8x7)/Cube 0: Measurement grid: dx=4mm, dy=4mm, dz=1.4mm

Reference Value = 39.29 V/m; Power Drift = 0.01 dB

Peak SAR (extrapolated) = 36.3 W/kg

SAR(1 g) = 8.03 W/kg; SAR(10 g) = 2.33 W/kg

Maximum value of SAR (measured) = 20.9 W/kg



0 dB = 20.9 W/kg = 13.38 dBW/kg

System Check_Head_5750MHz

DUT: D5GHzV2 - SN:1128

Communication System: UID 0, CW (0); Frequency: 5750 MHz;Duty Cycle: 1:1
Medium: HSL_5000 Medium parameters used: $f = 5750$ MHz; $\sigma = 5.049$ S/m; $\epsilon_r = 34.067$; $\rho = 1000$ kg/m³
Ambient Temperature : 23.3 °C; Liquid Temperature : 22.3 °C

DASY5 Configuration:

- Probe: EX3DV4 - SN3857; ConvF(5.17, 5.17, 5.17); Calibrated: 2019.5.27
- Sensor-Surface: 1.4mm (Mechanical Surface Detection)
- Electronics: DAE4 Sn1210; Calibrated: 2019.7.23
- Phantom: SAM1; Type: SAM; Serial: TP-1697
- Measurement SW: DASY52, Version 52.10 (1); SEMCAD X Version 14.6.11 (7439)

Pin=100mW/Area Scan (71x71x1): Interpolated grid: dx=1.000 mm, dy=1.000 mm

Maximum value of SAR (interpolated) = 19.6 W/kg

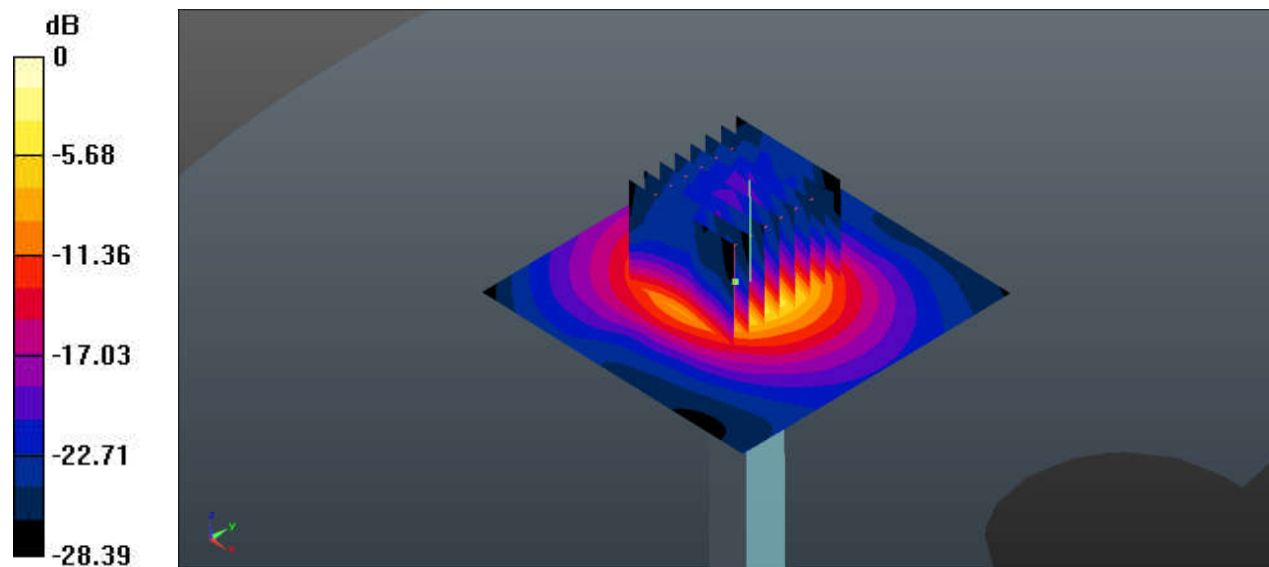
Pin=100mW/Zoom Scan (8x8x7)/Cube 0: Measurement grid: dx=4mm, dy=4mm, dz=1.4mm

Reference Value = 37.93 V/m; Power Drift = 0.06 dB

Peak SAR (extrapolated) = 32.7 W/kg

SAR(1 g) = 7.92 W/kg; SAR(10 g) = 2.29 W/kg

Maximum value of SAR (measured) = 18.2 W/kg



0 dB = 19.6 W/kg = 12.92 dBW/kg



Appendix B. Plots of High SAR Measurement

The plots are shown as follows.

01_GSM 850_UAT_GPRS 4 Tx slots_Right Cheek_0mm_Ch251

Communication System: UID 0, GSM850 (0); Frequency: 848.8 MHz; Duty Cycle: 1:2.08
Medium: HSL_835 Medium parameters used: $f = 849$ MHz; $\sigma = 0.938$ S/m; $\epsilon_r = 41.021$; $\rho = 1000$ kg/m³
Ambient Temperature : 23.3 °C ; Liquid Temperature : 22.7 °C

DASY5 Configuration:

- Probe: EX3DV4 - SN3857; ConvF(9.48, 9.48, 9.48); Calibrated: 2019.5.27
- Sensor-Surface: 1.4mm (Mechanical Surface Detection)
- Electronics: DAE4 Sn1210; Calibrated: 2019.7.23
- Phantom: SAM1; Type: SAM; Serial: TP-1697
- Measurement SW: DASY52, Version 52.10 (1); SEMCAD X Version 14.6.11 (7439)

Ch251/Area Scan (71x61x1): Interpolated grid: dx=1.500 mm, dy=1.500 mm

Maximum value of SAR (interpolated) = 1.45 W/kg

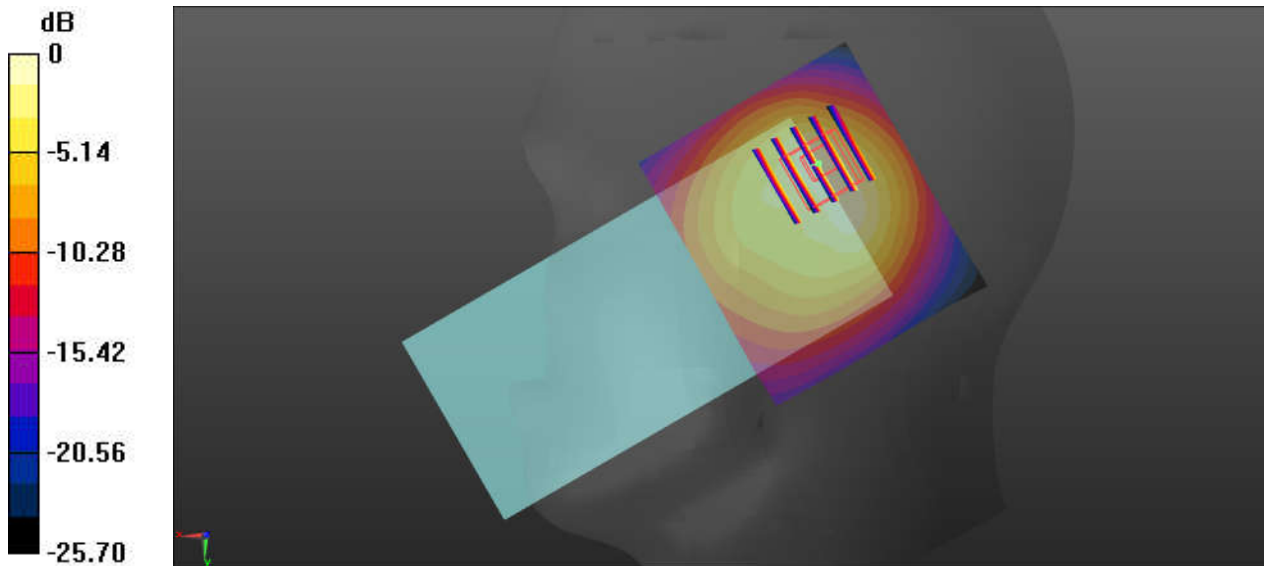
Ch251/Zoom Scan (5x5x7)/Cube 0: Measurement grid: dx=8mm, dy=8mm, dz=5mm

Reference Value = 23.41 V/m; Power Drift = 0.01 dB

Peak SAR (extrapolated) = 1.77 W/kg

SAR(1 g) = 0.762 W/kg; SAR(10 g) = 0.422 W/kg

Maximum value of SAR (measured) = 1.36 W/kg



0 dB = 1.45 W/kg = 1.61 dBW/kg

02_GSM 1900_UAT_GPRS 4 Tx slots_Right Cheek_0mm_Ch810

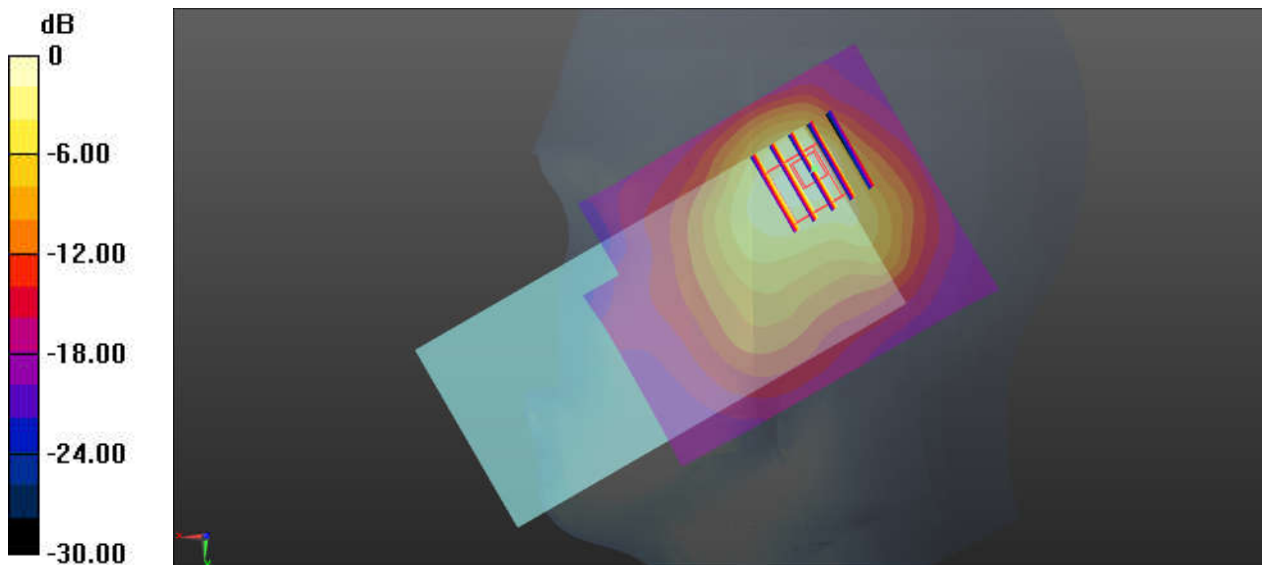
Communication System: UID 0, GSM1900 (0); Frequency: 1909.8 MHz; Duty Cycle: 1:2.08
Medium: HSL_1900 Medium parameters used: $f = 1910$ MHz; $\sigma = 1.439$ S/m; $\epsilon_r = 39.788$; $\rho = 1000$ kg/m³
Ambient Temperature : 23.3 °C ; Liquid Temperature : 22.7 °C

DASY5 Configuration:

- Probe: EX3DV4 - SN3857; ConvF(8.1, 8.1, 8.1); Calibrated: 2019.5.27
- Sensor-Surface: 1.4mm (Mechanical Surface Detection)
- Electronics: DAE4 Sn1210; Calibrated: 2019.7.23
- Phantom: SAM1; Type: SAM; Serial: TP-1697
- Measurement SW: DASY52, Version 52.10 (1); SEMCAD X Version 14.6.11 (7439)

Ch810/Area Scan (71x91x1): Interpolated grid: dx=1.500 mm, dy=1.500 mm
Maximum value of SAR (interpolated) = 1.37 W/kg

Ch810/Zoom Scan (5x5x7)/Cube 0: Measurement grid: dx=8mm, dy=8mm, dz=5mm
Reference Value = 19.72 V/m; Power Drift = 0.06 dB
Peak SAR (extrapolated) = 1.85 W/kg
SAR(1 g) = 0.853 W/kg; SAR(10 g) = 0.485 W/kg
Maximum value of SAR (measured) = 1.08 W/kg



0 dB = 1.37 W/kg = 1.37 dBW/kg

03_WCDMA V_UAT_RMC 12.2Kbps_Right Cheek_0mm_Ch4132

Communication System: UID 0, WCDMA (0); Frequency: 826.4 MHz; Duty Cycle: 1:1
Medium: HSL_835 Medium parameters used: $f = 826.4$ MHz; $\sigma = 0.916$ S/m; $\epsilon_r = 41.261$; $\rho = 1000$ kg/m³
Ambient Temperature : 23.3 °C ; Liquid Temperature : 22.7 °C

DASY5 Configuration:

- Probe: EX3DV4 - SN3857; ConvF(9.48, 9.48, 9.48); Calibrated: 2019.5.27
- Sensor-Surface: 1.4mm (Mechanical Surface Detection)
- Electronics: DAE4 Sn1210; Calibrated: 2019.7.23
- Phantom: SAM1; Type: SAM; Serial: TP-1697
- Measurement SW: DASY52, Version 52.10 (1); SEMCAD X Version 14.6.11 (7439)

Ch4132/Area Scan (81x71x1): Interpolated grid: dx=1.500 mm, dy=1.500 mm

Maximum value of SAR (interpolated) = 1.00 W/kg

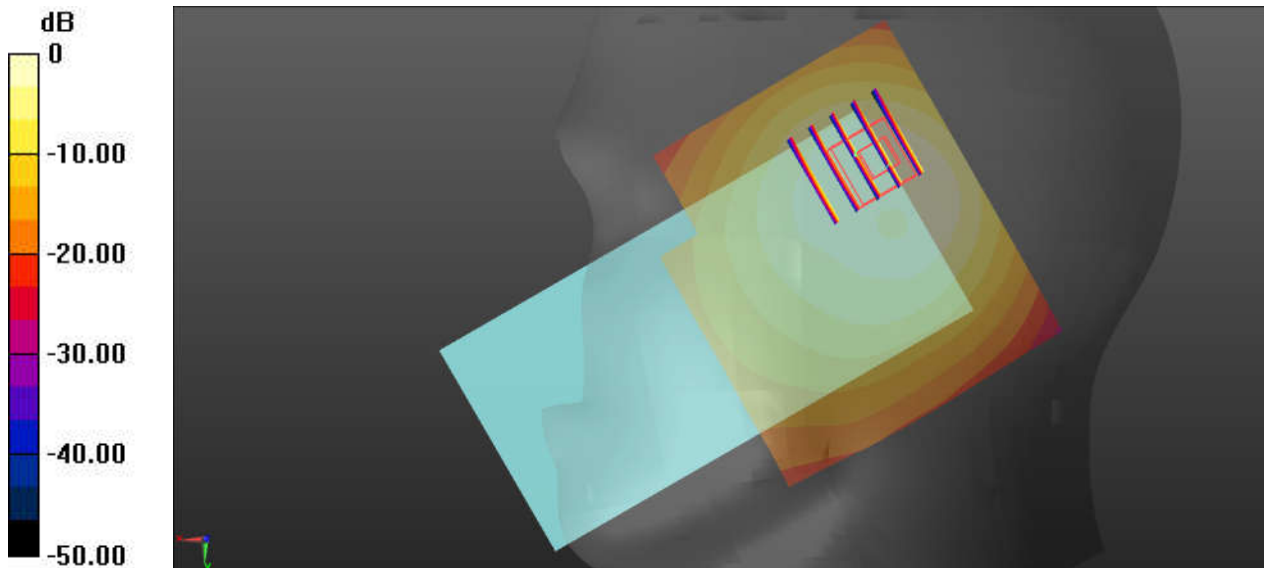
Ch4132/Zoom Scan (5x5x7)/Cube 0: Measurement grid: dx=8mm, dy=8mm, dz=5mm

Reference Value = 30.44 V/m; Power Drift = -0.10 dB

Peak SAR (extrapolated) = 1.76 W/kg

SAR(1 g) = 0.825 W/kg; SAR(10 g) = 0.457 W/kg

Maximum value of SAR (measured) = 1.04 W/kg



0 dB = 1.00 W/kg = 0.00 dBW/kg

04_WCDMA IV_UAT_RMC 12.2Kbps_Right Cheek_0mm_Ch1513

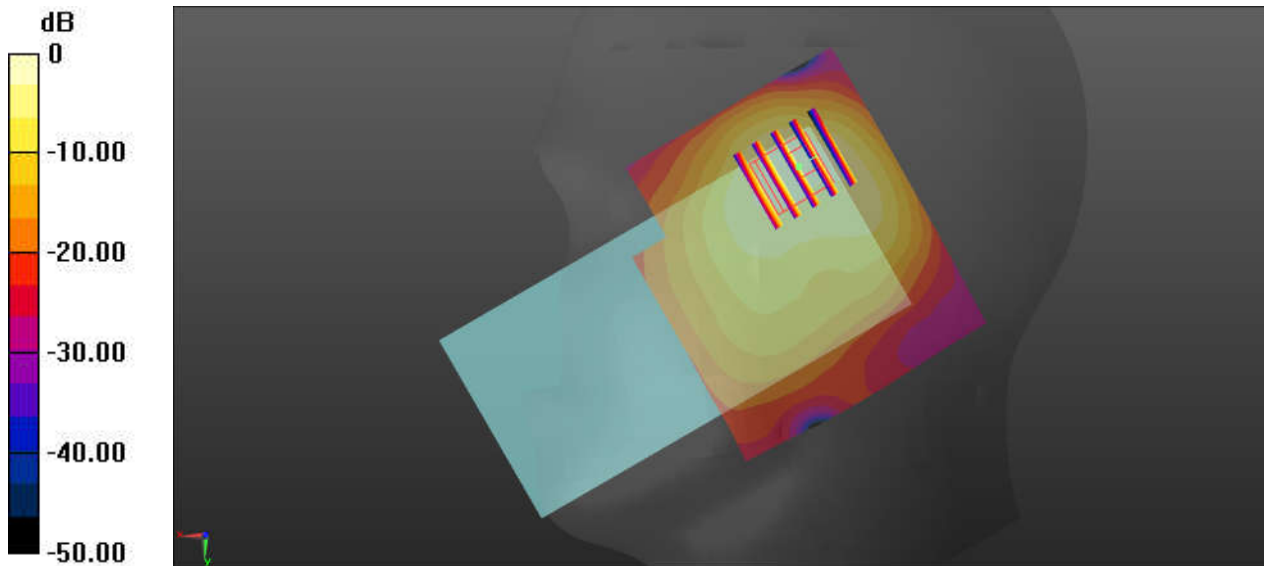
Communication System: UID 0, WCDMA (0); Frequency: 1752.6 MHz; Duty Cycle: 1:1
Medium: HSL_1750 Medium parameters used: $f = 1753$ MHz; $\sigma = 1.37$ S/m; $\epsilon_r = 41.374$; $\rho = 1000$ kg/m³
Ambient Temperature : 23.4 °C ; Liquid Temperature : 22.8 °C

DASY5 Configuration:

- Probe: EX3DV4 - SN3857; ConvF(8.46, 8.46, 8.46); Calibrated: 2019.5.27
- Sensor-Surface: 1.4mm (Mechanical Surface Detection)
- Electronics: DAE4 Sn1210; Calibrated: 2019.7.23
- Phantom: SAM1; Type: SAM; Serial: TP-1697
- Measurement SW: DASY52, Version 52.10 (1); SEMCAD X Version 14.6.11 (7439)

Ch1513/Area Scan (81x71x1): Interpolated grid: dx=1.500 mm, dy=1.500 mm
Maximum value of SAR (interpolated) = 1.30 W/kg

Ch1513/Zoom Scan (5x5x7)/Cube 0: Measurement grid: dx=8mm, dy=8mm, dz=5mm
Reference Value = 19.84 V/m; Power Drift = -0.06 dB
Peak SAR (extrapolated) = 2.04 W/kg
SAR(1 g) = 0.855 W/kg; SAR(10 g) = 0.438 W/kg
Maximum value of SAR (measured) = 1.12 W/kg



0 dB = 1.30 W/kg = 1.14 dBW/kg

05_WCDMA II_UAT_RMC 12.2Kbps_Right Cheek_0mm_Ch9538

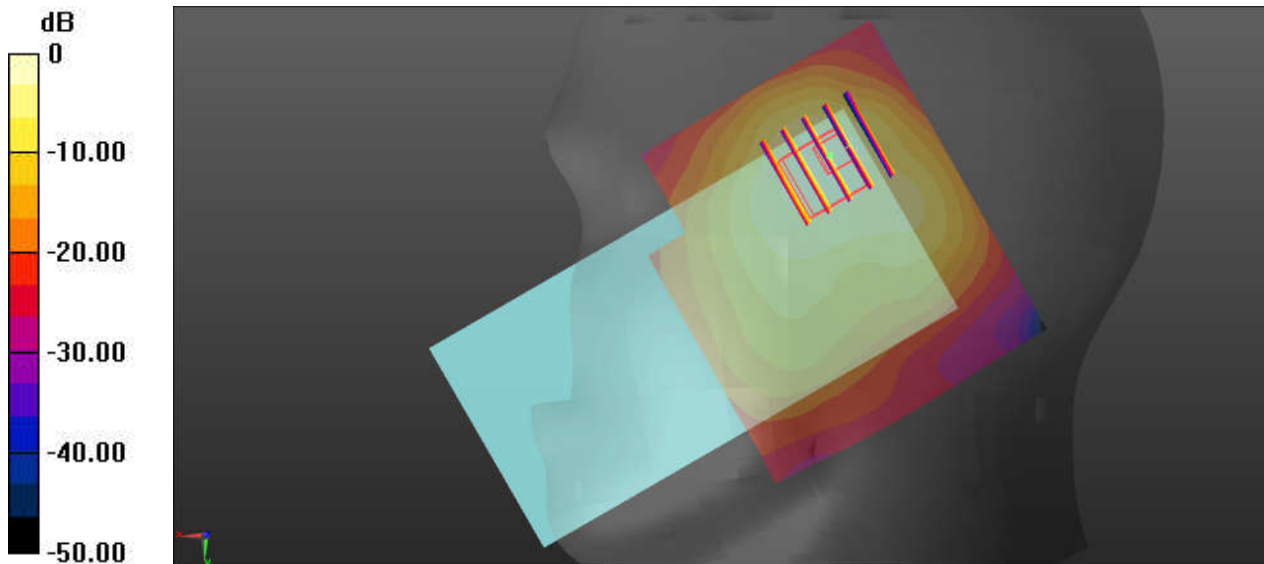
Communication System: UID 0, WCDMA (0); Frequency: 1907.6 MHz; Duty Cycle: 1:1
Medium: HSL_1900 Medium parameters used: $f = 1908$ MHz; $\sigma = 1.437$ S/m; $\epsilon_r = 39.794$; $\rho = 1000$ kg/m³
Ambient Temperature : 23.3 °C ; Liquid Temperature : 22.7 °C

DASY5 Configuration:

- Probe: EX3DV4 - SN3857; ConvF(8.1, 8.1, 8.1); Calibrated: 2019.5.27
- Sensor-Surface: 1.4mm (Mechanical Surface Detection)
- Electronics: DAE4 Sn1210; Calibrated: 2019.7.23
- Phantom: SAM1; Type: SAM; Serial: TP-1697
- Measurement SW: DASY52, Version 52.10 (1); SEMCAD X Version 14.6.11 (7439)

Ch9538/Area Scan (81x71x1): Interpolated grid: dx=1.500 mm, dy=1.500 mm
Maximum value of SAR (interpolated) = 1.67 W/kg

Ch9538/Zoom Scan (5x5x7)/Cube 0: Measurement grid: dx=8mm, dy=8mm, dz=5mm
Reference Value = 20.32 V/m; Power Drift = 0.01 dB
Peak SAR (extrapolated) = 2.37 W/kg
SAR(1 g) = 1.02 W/kg; SAR(10 g) = 0.551 W/kg
Maximum value of SAR (measured) = 1.28 W/kg



0 dB = 1.67 W/kg = 2.23 dBW/kg

06_LTE Band 26_UAT_15M_QPSK_75RB_0Offset_Left Cheek_0mm_Ch26865

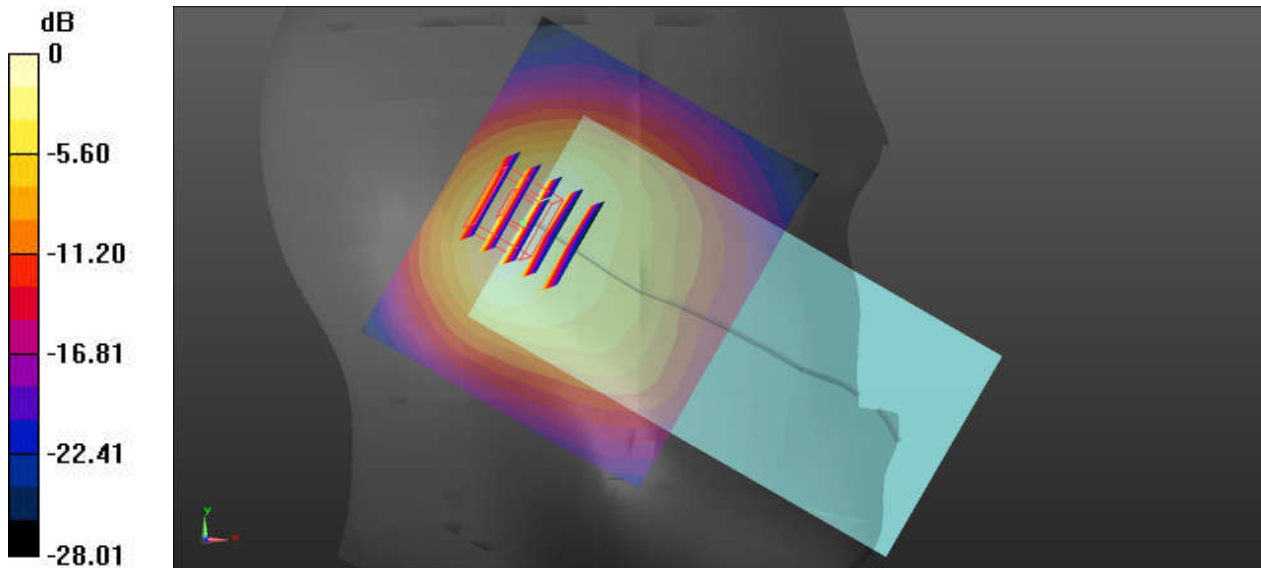
Communication System: UID 0, LTE-FDD (0); Frequency: 831.5 MHz; Duty Cycle: 1:1
Medium: HSL_835 Medium parameters used: $f = 831.5$ MHz; $\sigma = 0.922$ S/m; $\epsilon_r = 41.201$; $\rho = 1000$ kg/m³
Ambient Temperature : 23.3 °C; Liquid Temperature : 22.7 °C

DASY5 Configuration:

- Probe: EX3DV4 - SN3857; ConvF(9.48, 9.48, 9.48); Calibrated: 2019.5.27
- Sensor-Surface: 1.4mm (Mechanical Surface Detection)
- Electronics: DAE4 Sn1210; Calibrated: 2019.7.23
- Phantom: SAM1; Type: SAM; Serial: TP-1697
- Measurement SW: DASY52, Version 52.10 (1); SEMCAD X Version 14.6.11 (7439)

Ch26865/Area Scan (81x71x1): Interpolated grid: dx=1.500 mm, dy=1.500 mm
Maximum value of SAR (interpolated) = 1.29 W/kg

Ch26865/Zoom Scan (5x5x7)/Cube 0: Measurement grid: dx=8mm, dy=8mm, dz=5mm
Reference Value = 36.44 V/m; Power Drift = -0.01 dB
Peak SAR (extrapolated) = 1.93 W/kg
SAR(1 g) = 0.829 W/kg; SAR(10 g) = 0.417 W/kg
Maximum value of SAR (measured) = 1.40 W/kg



0 dB = 1.29 W/kg = 1.11 dBW/kg

07_LTE Band 4_UAT_20M_QPSK_1RB_0Offset_Right Cheek_0mm_Ch20175

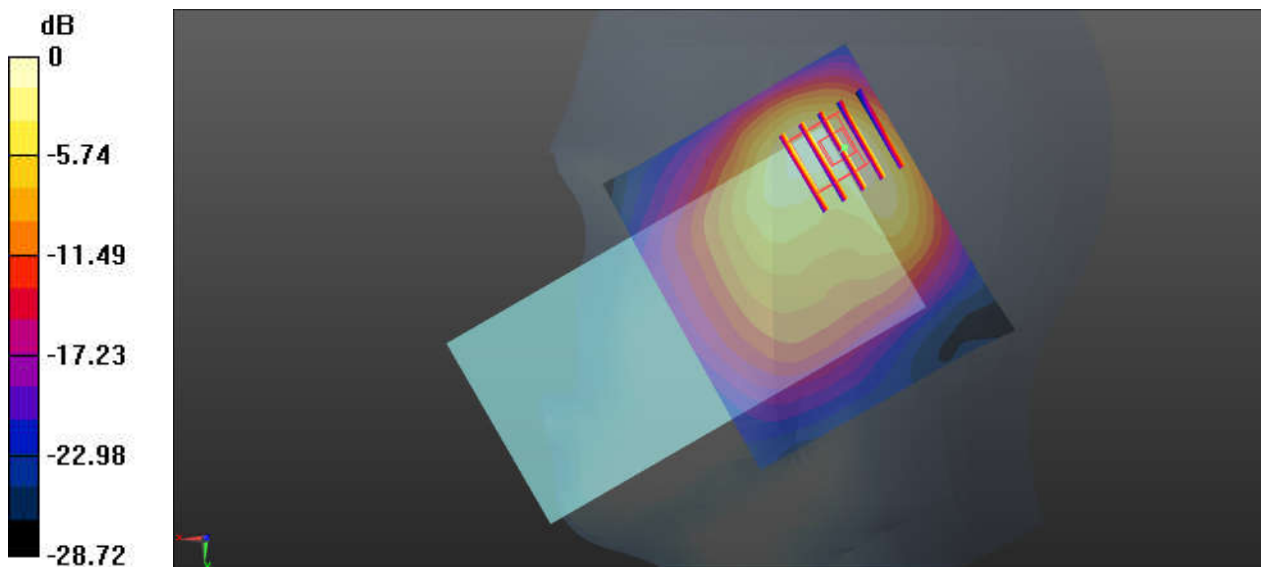
Communication System: UID 0, LTE-FDD (0); Frequency: 1732.5 MHz; Duty Cycle: 1:1
Medium: HSL_1750 Medium parameters used: $f = 1732.5$ MHz; $\sigma = 1.349$ S/m; $\epsilon_r = 41.428$; $\rho = 1000$ kg/m³
Ambient Temperature : 23.4 °C ; Liquid Temperature : 22.8 °C

DASY5 Configuration:

- Probe: EX3DV4 - SN3857; ConvF(8.46, 8.46, 8.46); Calibrated: 2019.5.27
- Sensor-Surface: 1.4mm (Mechanical Surface Detection)
- Electronics: DAE4 Sn1210; Calibrated: 2019.7.23
- Phantom: SAM1; Type: SAM; Serial: TP-1697
- Measurement SW: DASY52, Version 52.10 (1); SEMCAD X Version 14.6.11 (7439)

Ch20175/Area Scan (81x71x1): Interpolated grid: dx=1.500 mm, dy=1.500 mm
Maximum value of SAR (interpolated) = 1.12 W/kg

Ch20175/Zoom Scan (5x5x7)/Cube 0: Measurement grid: dx=8mm, dy=8mm, dz=5mm
Reference Value = 17.03 V/m; Power Drift = -0.05 dB
Peak SAR (extrapolated) = 1.79 W/kg
SAR(1 g) = 0.799 W/kg; SAR(10 g) = 0.417 W/kg
Maximum value of SAR (measured) = 1.09 W/kg



0 dB = 1.12 W/kg = 0.49 dBW/kg

08_LTE Band 2_UAT_20M_QPSK_50RB_24Offset_Right Cheek_0mm_Ch19100

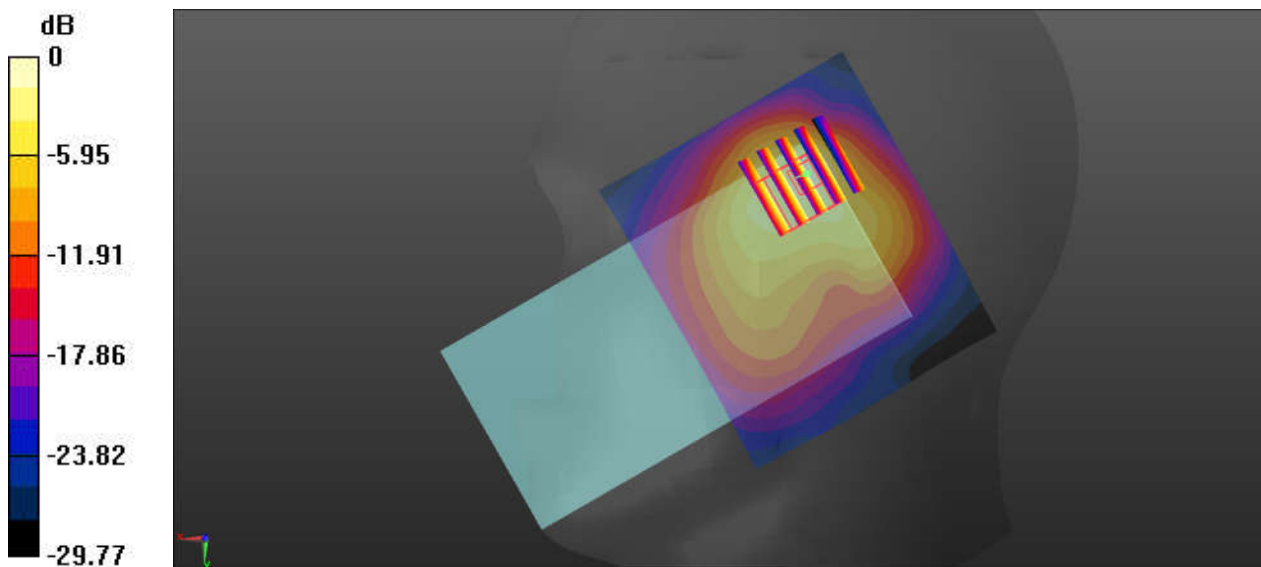
Communication System: UID 0, LTE-FDD (0); Frequency: 1900 MHz; Duty Cycle: 1:1
Medium: HSL_1900 Medium parameters used: $f = 1900$ MHz; $\sigma = 1.429$ S/m; $\epsilon_r = 39.827$; $\rho = 1000$ kg/m³
Ambient Temperature : 23.3 °C ; Liquid Temperature : 22.7 °C

DASY5 Configuration:

- Probe: EX3DV4 - SN3857; ConvF(8.1, 8.1, 8.1); Calibrated: 2019.5.27
- Sensor-Surface: 1.4mm (Mechanical Surface Detection)
- Electronics: DAE4 Sn1210; Calibrated: 2019.7.23
- Phantom: SAM1; Type: SAM; Serial: TP-1697
- Measurement SW: DASY52, Version 52.10 (1); SEMCAD X Version 14.6.11 (7439)

Ch19100/Area Scan (81x71x1): Interpolated grid: dx=1.500 mm, dy=1.500 mm
Maximum value of SAR (interpolated) = 2.23 W/kg

Ch19100/Zoom Scan (5x5x7)/Cube 0: Measurement grid: dx=8mm, dy=8mm, dz=5mm
Reference Value = 23.34 V/m; Power Drift = 0.01 dB
Peak SAR (extrapolated) = 2.32 W/kg
SAR(1 g) = 0.968 W/kg; SAR(10 g) = 0.542 W/kg
Maximum value of SAR (measured) = 1.54 W/kg



0 dB = 2.23 W/kg = 3.48 dBW/kg

09_LTE Band 7_UAT_20M_QPSK_50RB_50Offset_Right Cheek_0mm_Ch20850

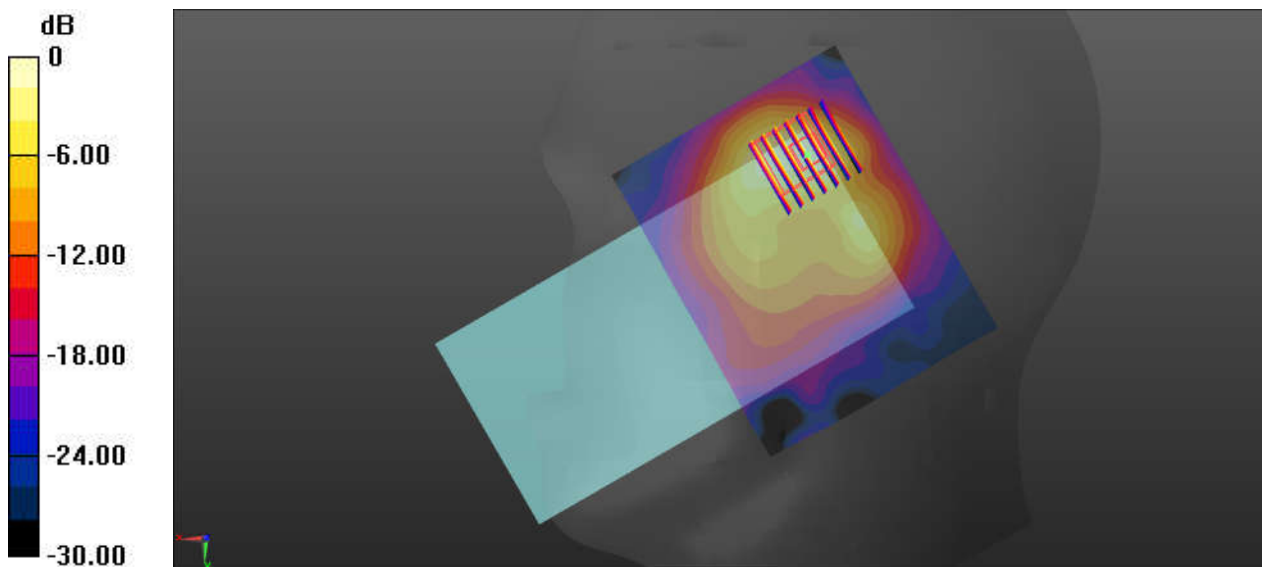
Communication System: UID 0, LTE-FDD (0); Frequency: 2510 MHz; Duty Cycle: 1:1
Medium: HSL_2600 Medium parameters used: $f = 2510$ MHz; $\sigma = 1.938$ S/m; $\epsilon_r = 38.609$; $\rho = 1000$ kg/m³
Ambient Temperature : 23.3 °C ; Liquid Temperature : 22.2 °C

DASY5 Configuration:

- Probe: EX3DV4 - SN3857; ConvF(7.31, 7.31, 7.31); Calibrated: 2019.5.27
- Sensor-Surface: 1.4mm (Mechanical Surface Detection)
- Electronics: DAE4 Sn1210; Calibrated: 2019.7.23
- Phantom: SAM1; Type: SAM; Serial: TP-1697
- Measurement SW: DASY52, Version 52.10 (1); SEMCAD X Version 14.6.11 (7439)

Ch20850/Area Scan (101x81x1): Interpolated grid: dx=1.200 mm, dy=1.200 mm
Maximum value of SAR (interpolated) = 1.51 W/kg

Ch20850/Zoom Scan (7x7x7)/Cube 0: Measurement grid: dx=5mm, dy=5mm, dz=5mm
Reference Value = 18.05 V/m; Power Drift = -0.12 dB
Peak SAR (extrapolated) = 2.11 W/kg
SAR(1 g) = 0.775 W/kg; SAR(10 g) = 0.346 W/kg
Maximum value of SAR (measured) = 1.50 W/kg



0 dB = 1.51 W/kg = 1.79 dBW/kg

10_LTE Band 38_UAT_20M_QPSK_50RB_0Offset_Right Cheek_0mm_Ch38000

Communication System: UID 0, LTE-TDD (0); Frequency: 2595 MHz; Duty Cycle: 1:1.59
Medium: HSL_2600 Medium parameters used: $f = 2595$ MHz; $\sigma = 2.042$ S/m; $\epsilon_r = 38.278$; $\rho = 1000$ kg/m³
Ambient Temperature : 23.3 °C ; Liquid Temperature : 22.2 °C

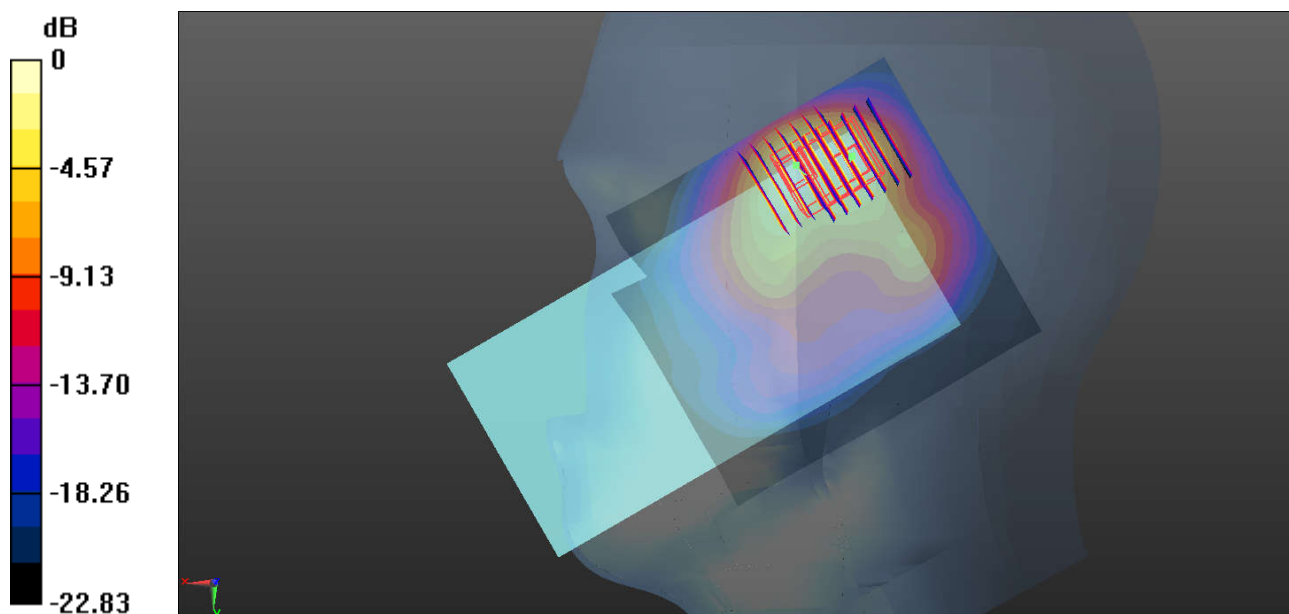
DASY5 Configuration:

- Probe: EX3DV4 - SN3857; ConvF(7.31, 7.31, 7.31); Calibrated: 2019.5.27
- Sensor-Surface: 1.4mm (Mechanical Surface Detection)
- Electronics: DAE4 Sn1210; Calibrated: 2019.7.23
- Phantom: SAM1; Type: SAM; Serial: TP-1697
- Measurement SW: DASY52, Version 52.10 (1); SEMCAD X Version 14.6.11 (7439)

Ch38000/Area Scan (91x101x1): Interpolated grid: dx=1.200 mm, dy=1.200 mm
Maximum value of SAR (interpolated) = 1.01 W/kg

Ch38000/Zoom Scan (7x7x7)/Cube 0: Measurement grid: dx=5mm, dy=5mm, dz=5mm
Reference Value = 11.99 V/m; Power Drift = -0.16 dB
Peak SAR (extrapolated) = 1.81 W/kg
SAR(1 g) = 0.738 W/kg; SAR(10 g) = 0.349 W/kg
Maximum value of SAR (measured) = 1.04 W/kg

Ch38000/Zoom Scan (7x7x7)/Cube 1: Measurement grid: dx=5mm, dy=5mm, dz=5mm
Reference Value = 11.99 V/m; Power Drift = -0.16 dB
Peak SAR (extrapolated) = 1.89 W/kg
SAR(1 g) = 0.747 W/kg; SAR(10 g) = 0.328 W/kg
Maximum value of SAR (measured) = 1.02 W/kg



0 dB = 1.02 W/kg = 0.09 dBW/kg

11_Bluetooth_1Mbps_Left Tilted_0mm_Ch0

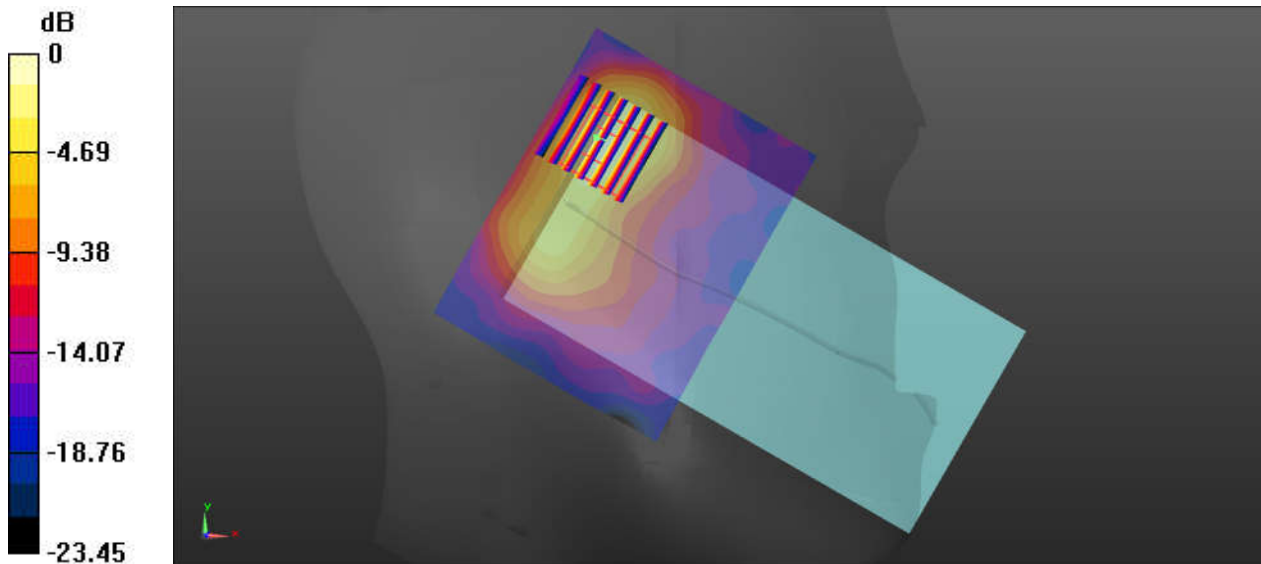
Communication System: UID 0, Bluetooth (0); Frequency: 2402 MHz; Duty Cycle: 1:1.304
Medium: HSL_2450 Medium parameters used: $f = 2402$ MHz; $\sigma = 1.811$ S/m; $\epsilon_r = 39.093$; $\rho = 1000$ kg/m³
Ambient Temperature : 23.3 °C ; Liquid Temperature : 22.3 °C

DASY5 Configuration:

- Probe: EX3DV4 - SN3857; ConvF(7.5, 7.5, 7.5); Calibrated: 2019.5.27
- Sensor-Surface: 1.4mm (Mechanical Surface Detection)
- Electronics: DAE4 Sn1210; Calibrated: 2019.7.23
- Phantom: SAM1; Type: SAM; Serial: TP-1697
- Measurement SW: DASY52, Version 52.10 (1); SEMCAD X Version 14.6.11 (7439)

Ch0/Area Scan (91x71x1): Interpolated grid: dx=1.200 mm, dy=1.200 mm
Maximum value of SAR (interpolated) = 0.316 W/kg

Ch0/Zoom Scan (7x7x7)/Cube 0: Measurement grid: dx=5mm, dy=5mm, dz=5mm
Reference Value = 9.080 V/m; Power Drift = -0.04 dB
Peak SAR (extrapolated) = 0.507 W/kg
SAR(1 g) = 0.193 W/kg; SAR(10 g) = 0.085 W/kg
Maximum value of SAR (measured) = 0.378 W/kg



0 dB = 0.316 W/kg = -5.00 dBW/kg

12_WLAN2.4GHz_802.11b 1Mbps_Left Tilted_0mm_Ant1_Ch11

Communication System: UID 0, 802.11b (0); Frequency: 2462 MHz; Duty Cycle: 1:1
Medium: HSL_2450 Medium parameters used: $f = 2462$ MHz; $\sigma = 1.884$ S/m; $\epsilon_r = 38.855$; $\rho = 1000$ kg/m³
Ambient Temperature : 23.3 °C; Liquid Temperature : 22.3 °C

DASY5 Configuration:

- Probe: EX3DV4 - SN3857; ConvF(7.5, 7.5, 7.5); Calibrated: 2019.5.27
- Sensor-Surface: 1.4mm (Mechanical Surface Detection)
- Electronics: DAE4 Sn1210; Calibrated: 2019.7.23
- Phantom: SAM1; Type: SAM; Serial: TP-1697
- Measurement SW: DASY52, Version 52.10 (1); SEMCAD X Version 14.6.11 (7439)

Ch11/Area Scan (81x71x1): Interpolated grid: dx=1.200 mm, dy=1.200 mm

Maximum value of SAR (interpolated) = 1.96 W/kg

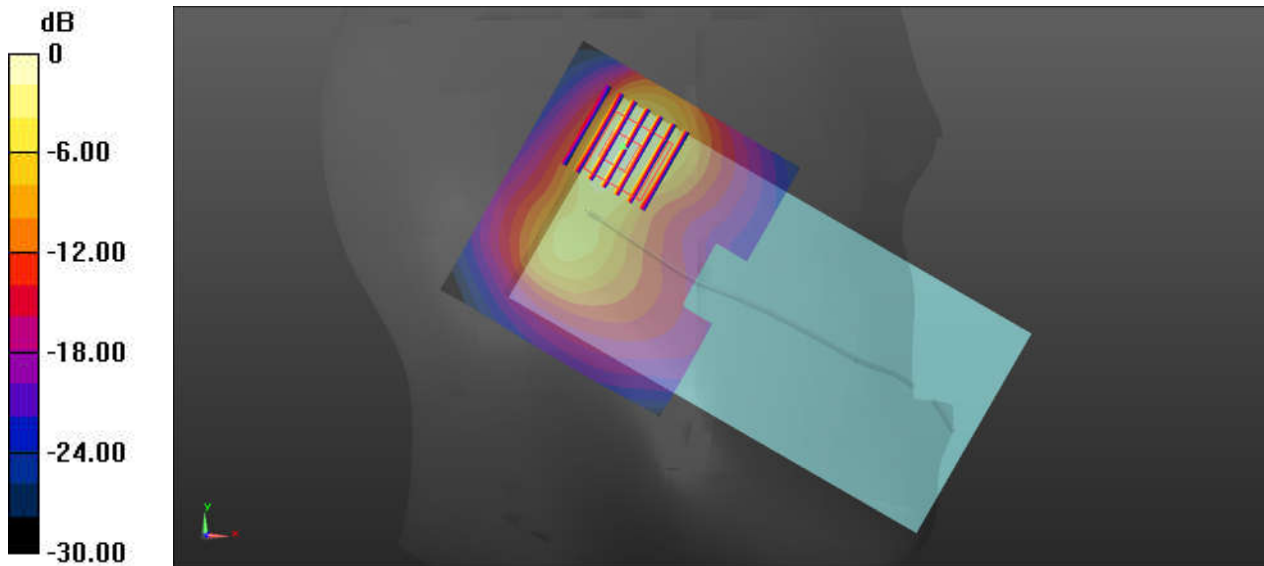
Ch11/Zoom Scan (7x7x7)/Cube 0: Measurement grid: dx=5mm, dy=5mm, dz=5mm

Reference Value = 18.81 V/m; Power Drift = -0.04 dB

Peak SAR (extrapolated) = 2.37 W/kg

SAR(1 g) = 0.956 W/kg; SAR(10 g) = 0.410 W/kg

Maximum value of SAR (measured) = 1.79 W/kg



0 dB = 1.96 W/kg = 2.92 dBW/kg

13_WLAN5GHz_802.11a 6Mbps_Left Cheek_0mm_Ant1_Ch60

Communication System: UID 0, 802.11a (0); Frequency: 5300 MHz; Duty Cycle: 1:1.018
Medium: HSL_5000 Medium parameters used: $f = 5300$ MHz; $\sigma = 4.602$ S/m; $\epsilon_r = 34.706$; $\rho = 1000$ kg/m³
Ambient Temperature : 23.3 °C ; Liquid Temperature : 22.3 °C

DASY5 Configuration:

- Probe: EX3DV4 - SN3857; ConvF(5.19, 5.19, 5.19); Calibrated: 2019.5.27
- Sensor-Surface: 1.4mm (Mechanical Surface Detection)
- Electronics: DAE4 Sn1210; Calibrated: 2019.7.23
- Phantom: SAM1; Type: SAM; Serial: TP-1697
- Measurement SW: DASY52, Version 52.10 (1); SEMCAD X Version 14.6.11 (7439)

Ch60/Area Scan (101x81x1): Interpolated grid: dx=1.000 mm, dy=1.000 mm

Maximum value of SAR (interpolated) = 2.58 W/kg

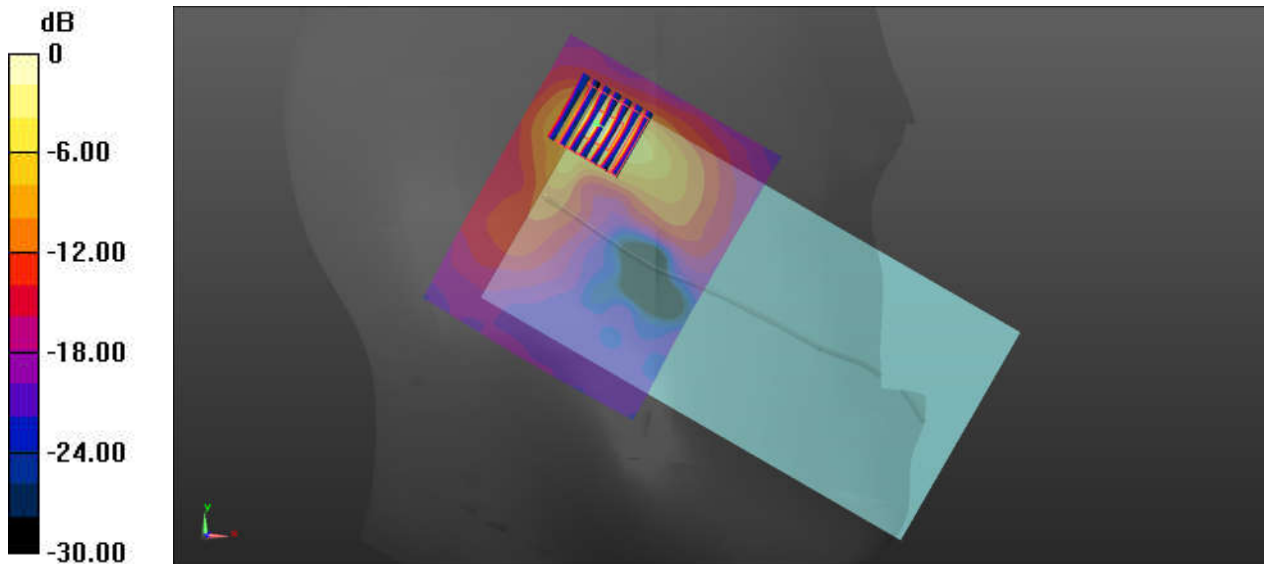
Ch60/Zoom Scan (7x7x7)/Cube 0: Measurement grid: dx=4mm, dy=4mm, dz=1.4mm

Reference Value = 7.592 V/m; Power Drift = -0.01 dB

Peak SAR (extrapolated) = 4.98 W/kg

SAR(1 g) = 0.962 W/kg; SAR(10 g) = 0.254 W/kg

Maximum value of SAR (measured) = 2.82 W/kg



0 dB = 2.58 W/kg = 4.12 dBW/kg

14_WLAN5GHz_802.11a 6Mbps_Left Cheek_0mm_Ant1_Ch140

Communication System: UID 0, 802.11a (0); Frequency: 5700 MHz; Duty Cycle: 1:1.018
Medium: HSL_5000 Medium parameters used: $f = 5700$ MHz; $\sigma = 4.999$ S/m; $\epsilon_r = 34.158$; $\rho = 1000$ kg/m³
Ambient Temperature : 23.3 °C ; Liquid Temperature : 22.3 °C

DASY5 Configuration:

- Probe: EX3DV4 - SN3857; ConvF(5.17, 5.17, 5.17); Calibrated: 2019.5.27
- Sensor-Surface: 1.4mm (Mechanical Surface Detection)
- Electronics: DAE4 Sn1210; Calibrated: 2019.7.23
- Phantom: SAM1; Type: SAM; Serial: TP-1697
- Measurement SW: DASY52, Version 52.10 (1); SEMCAD X Version 14.6.11 (7439)

Ch140/Area Scan (101x81x1): Interpolated grid: dx=1.000 mm, dy=1.000 mm

Maximum value of SAR (interpolated) = 2.15 W/kg

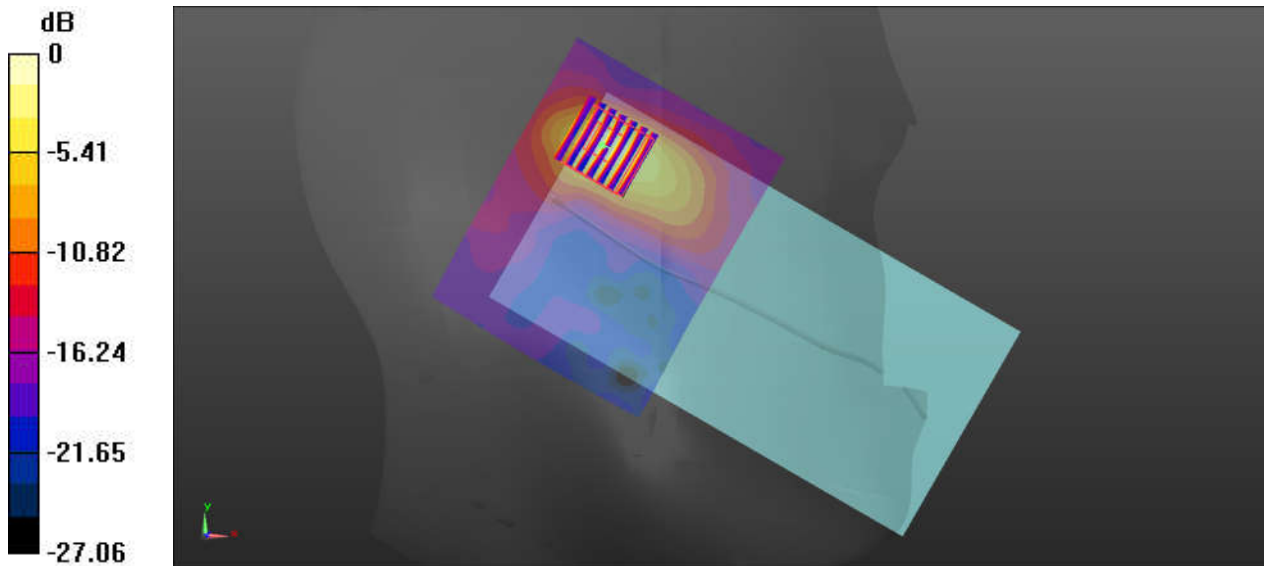
Ch140/Zoom Scan (7x7x7)/Cube 0: Measurement grid: dx=4mm, dy=4mm, dz=1.4mm

Reference Value = 4.945 V/m; Power Drift = 0.02 dB

Peak SAR (extrapolated) = 5.37 W/kg

SAR(1 g) = 0.983 W/kg; SAR(10 g) = 0.264 W/kg

Maximum value of SAR (measured) = 2.70 W/kg



0 dB = 2.15 W/kg = 3.32 dBW/kg

15_WLAN5GHz_802.11a 6Mbps_Left Cheek_0mm_Ant1_Ch157

Communication System: UID 0, 802.11a (0); Frequency: 5785 MHz; Duty Cycle: 1:1.018
Medium: HSL_5000 Medium parameters used: $f = 5785$ MHz; $\sigma = 5.085$ S/m; $\epsilon_r = 34.054$; $\rho = 1000$ kg/m³
Ambient Temperature : 23.3 °C ; Liquid Temperature : 22.3 °C

DASY5 Configuration:

- Probe: EX3DV4 - SN3857; ConvF(5.17, 5.17, 5.17); Calibrated: 2019.5.27
- Sensor-Surface: 1.4mm (Mechanical Surface Detection)
- Electronics: DAE4 Sn1210; Calibrated: 2019.7.23
- Phantom: SAM1; Type: SAM; Serial: TP-1697
- Measurement SW: DASY52, Version 52.10 (1); SEMCAD X Version 14.6.11 (7439)

Ch157/Area Scan (101x81x1): Interpolated grid: dx=1.000 mm, dy=1.000 mm

Maximum value of SAR (interpolated) = 2.76 W/kg

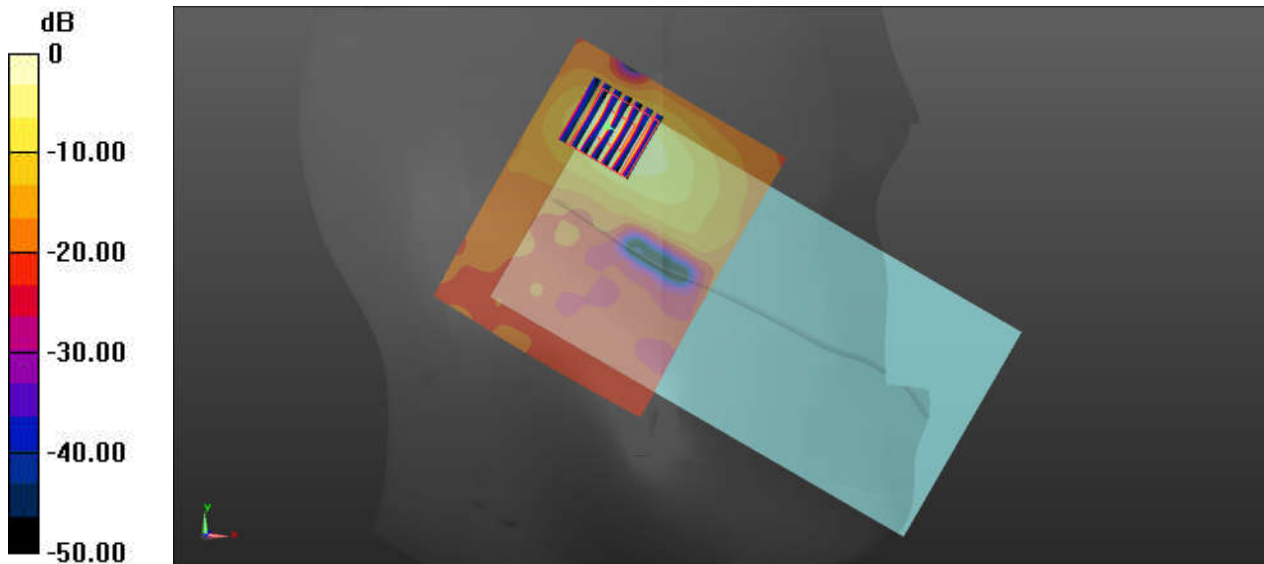
Ch157/Zoom Scan (7x7x7)/Cube 0: Measurement grid: dx=4mm, dy=4mm, dz=1.4mm

Reference Value = 2.749 V/m; Power Drift = -0.09 dB

Peak SAR (extrapolated) = 5.70 W/kg

SAR(1 g) = 1.04 W/kg; SAR(10 g) = 0.272 W/kg

Maximum value of SAR (measured) = 3.02 W/kg



0 dB = 2.76 W/kg = 4.41 dBW/kg

16_GSM 850-UAT_GPRS 4 Tx slots_Back_10mm_Ch189

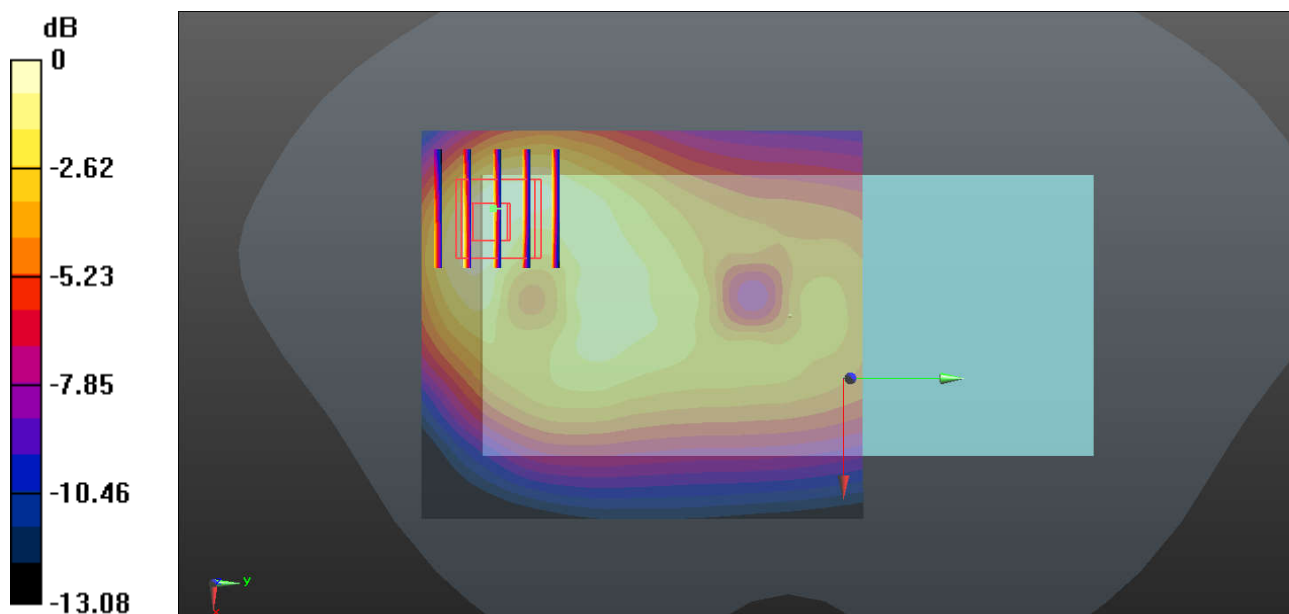
Communication System: UID 0, GSM850 (0); Frequency: 836.4 MHz; Duty Cycle: 1:2.08
Medium: HSL_835 Medium parameters used: $f = 836.4$ MHz; $\sigma = 0.926$ S/m; $\epsilon_r = 41.15$; $\rho = 1000$ kg/m³
Ambient Temperature : 23.3 °C ; Liquid Temperature : 22.7 °C

DASY5 Configuration:

- Probe: EX3DV4 - SN3857; ConvF(9.48, 9.48, 9.48); Calibrated: 2019.5.27
- Sensor-Surface: 1.4mm (Mechanical Surface Detection)
- Electronics: DAE4 Sn1210; Calibrated: 2019.7.23
- Phantom: SAM1; Type: SAM; Serial: TP-1697
- Measurement SW: DASY52, Version 52.10 (1); SEMCAD X Version 14.6.11 (7439)

Ch189/Area Scan (71x81x1): Interpolated grid: dx=1.500 mm, dy=1.500 mm
Maximum value of SAR (interpolated) = 0.301 W/kg

Ch189/Zoom Scan (5x5x7)/Cube 0: Measurement grid: dx=8mm, dy=8mm, dz=5mm
Reference Value = 13.10 V/m; Power Drift = -0.07 dB
Peak SAR (extrapolated) = 0.412 W/kg
SAR(1 g) = 0.250 W/kg; SAR(10 g) = 0.148 W/kg
Maximum value of SAR (measured) = 0.300 W/kg



0 dB = 0.300 W/kg = -5.23 dBW/kg

17_GSM 1900_LAT_GPRS 4 Tx slots_Bottom side_10mm_Ch661

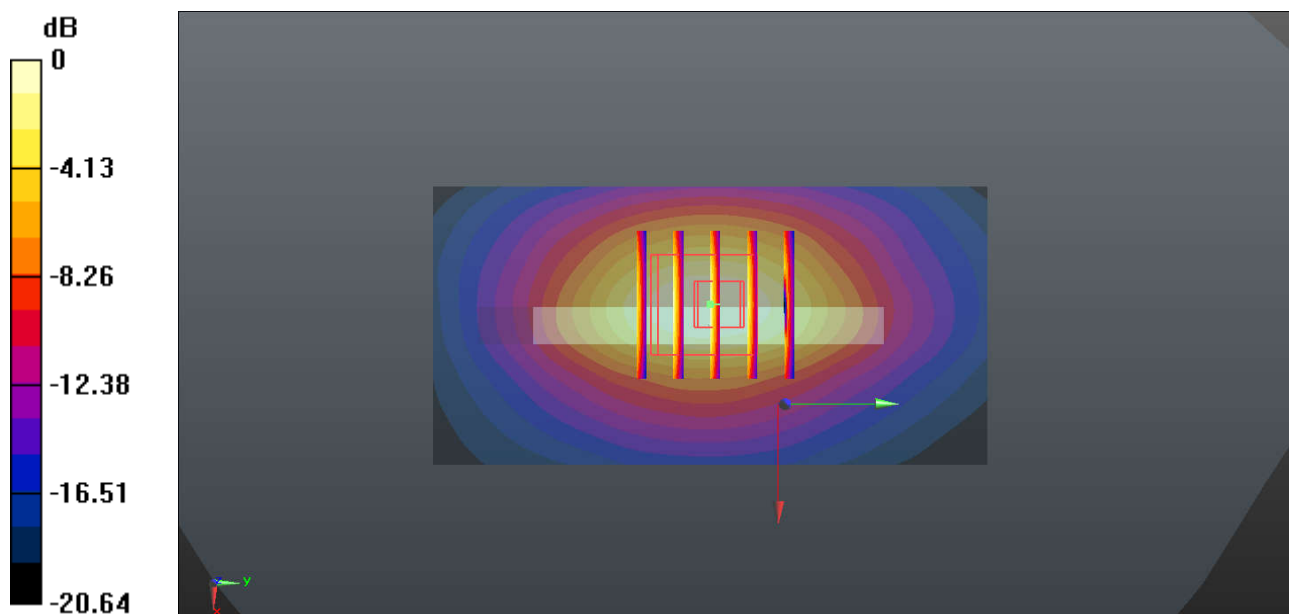
Communication System: UID 0, GSM1900 (0); Frequency: 1880 MHz; Duty Cycle: 1:2.08
Medium: HSL_1900 Medium parameters used: $f = 1880$ MHz; $\sigma = 1.407$ S/m; $\epsilon_r = 39.925$; $\rho = 1000$ kg/m³
Ambient Temperature : 23.3 °C ; Liquid Temperature : 22.7 °C

DASY5 Configuration:

- Probe: EX3DV4 - SN3857; ConvF(8.1, 8.1, 8.1); Calibrated: 2019.5.27
- Sensor-Surface: 1.4mm (Mechanical Surface Detection)
- Electronics: DAE4 Sn1210; Calibrated: 2019.7.23
- Phantom: SAM1; Type: SAM; Serial: TP-1697
- Measurement SW: DASY52, Version 52.10 (1); SEMCAD X Version 14.6.11 (7439)

Ch661/Area Scan (41x81x1): Interpolated grid: dx=1.500 mm, dy=1.500 mm
Maximum value of SAR (interpolated) = 0.985 W/kg

Ch661/Zoom Scan (5x5x7)/Cube 0: Measurement grid: dx=8mm, dy=8mm, dz=5mm
Reference Value = 26.14 V/m; Power Drift = -0.08 dB
Peak SAR (extrapolated) = 1.54 W/kg
SAR(1 g) = 0.804 W/kg; SAR(10 g) = 0.411 W/kg
Maximum value of SAR (measured) = 0.950 W/kg



0 dB = 0.950 W/kg = -0.22 dBW/kg

18_WCDMA V-UAT_RMC 12.2Kbps_Top Side_10mm_Ch4233

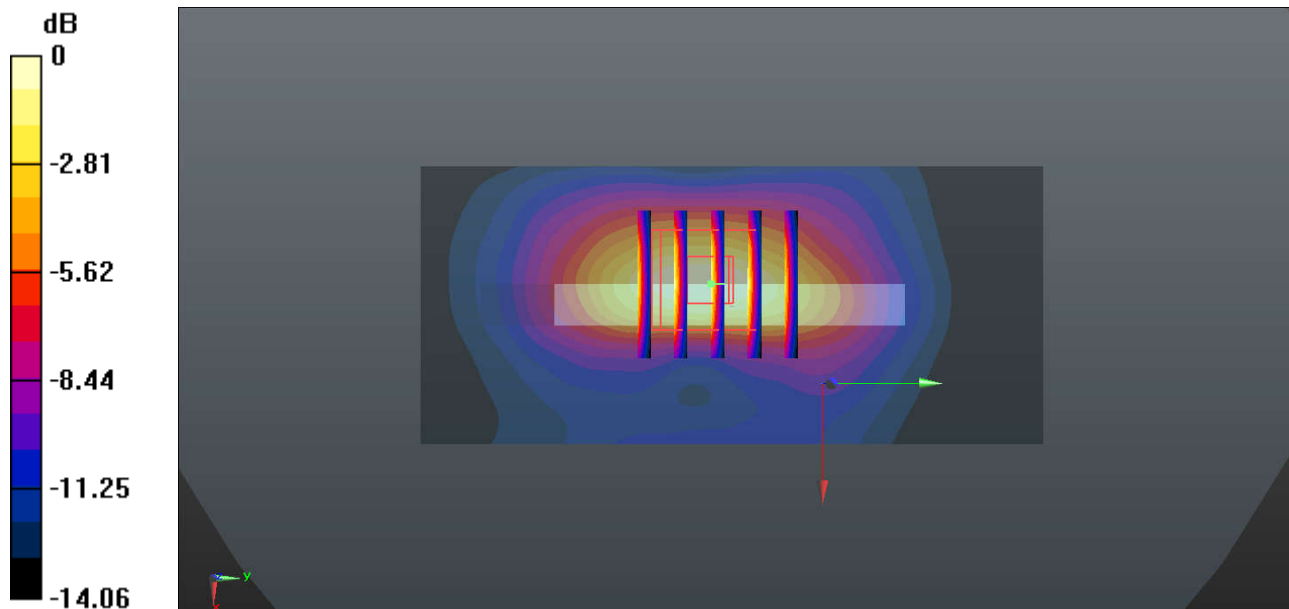
Communication System: UID 0, WCDMA (0); Frequency: 846.6 MHz; Duty Cycle: 1:1
Medium: HSL_835 Medium parameters used: $f = 847$ MHz; $\sigma = 0.936$ S/m; $\epsilon_r = 41.041$; $\rho = 1000$ kg/m³
Ambient Temperature : 23.3 °C ; Liquid Temperature : 22.7 °C

DASY5 Configuration:

- Probe: EX3DV4 - SN3857; ConvF(9.48, 9.48, 9.48); Calibrated: 2019.5.27
- Sensor-Surface: 1.4mm (Mechanical Surface Detection)
- Electronics: DAE4 Sn1210; Calibrated: 2019.7.23
- Phantom: SAM1; Type: SAM; Serial: TP-1697
- Measurement SW: DASY52, Version 52.10 (1); SEMCAD X Version 14.6.11 (7439)

Ch4233/Area Scan (41x91x1): Interpolated grid: dx=1.500 mm, dy=1.500 mm
Maximum value of SAR (interpolated) = 0.536 W/kg

Ch4233/Zoom Scan (5x5x7)/Cube 0: Measurement grid: dx=8mm, dy=8mm, dz=5mm
Reference Value = 21.91 V/m; Power Drift = 0.03 dB
Peak SAR (extrapolated) = 0.816 W/kg
SAR(1 g) = 0.424 W/kg; SAR(10 g) = 0.215 W/kg
Maximum value of SAR (measured) = 0.542 W/kg



0 dB = 0.542 W/kg = -2.66 dBW/kg

19_WCDMA IV_LAT_RMC 12.2Kbps_Bottom side_10mm_Ch1513

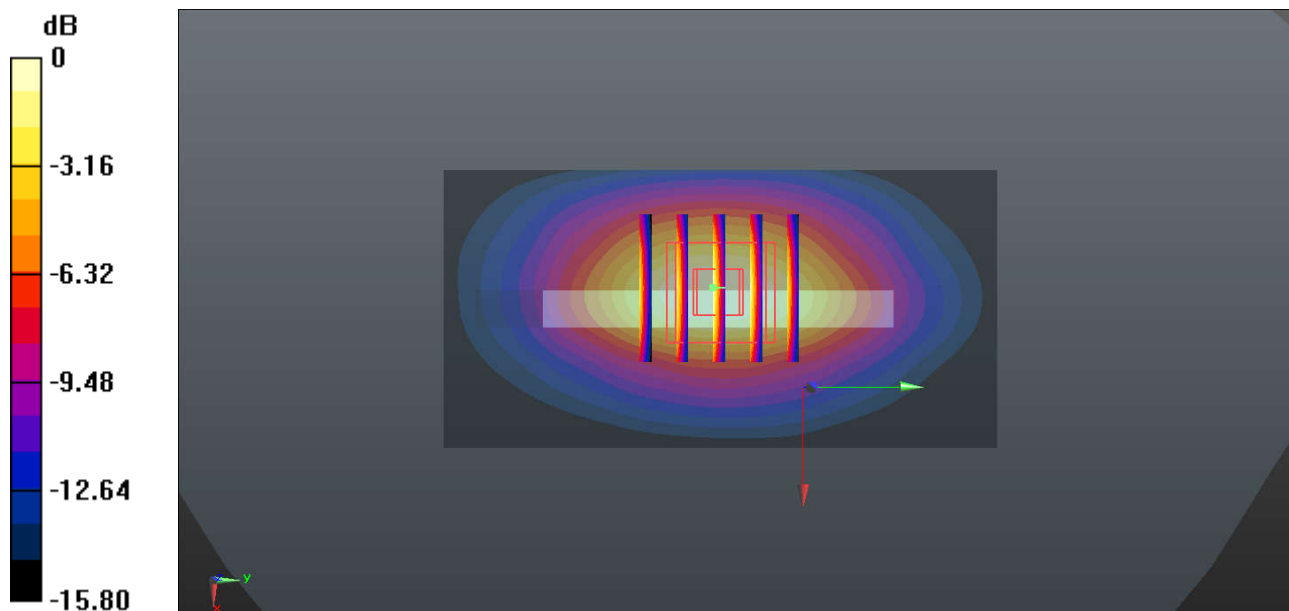
Communication System: UID 0, WCDMA (0); Frequency: 1752.6 MHz; Duty Cycle: 1:1
Medium: HSL_1750 Medium parameters used: $f = 1753 \text{ MHz}$; $\sigma = 1.37 \text{ S/m}$; $\epsilon_r = 41.374$; $\rho = 1000 \text{ kg/m}^3$
Ambient Temperature : $23.4 \text{ }^\circ\text{C}$; Liquid Temperature : $22.8 \text{ }^\circ\text{C}$

DASY5 Configuration:

- Probe: EX3DV4 - SN3857; ConvF(8.46, 8.46, 8.46); Calibrated: 2019.5.27
- Sensor-Surface: 1.4mm (Mechanical Surface Detection)
- Electronics: DAE4 Sn1210; Calibrated: 2019.7.23
- Phantom: SAM1; Type: SAM; Serial: TP-1697
- Measurement SW: DASY52, Version 52.10 (1); SEMCAD X Version 14.6.11 (7439)

Ch1513/Area Scan (41x81x1): Interpolated grid: $dx=1.500 \text{ mm}$, $dy=1.500 \text{ mm}$
Maximum value of SAR (interpolated) = 1.16 W/kg

Ch1513/Zoom Scan (5x5x7)/Cube 0: Measurement grid: $dx=8\text{mm}$, $dy=8\text{mm}$, $dz=5\text{mm}$
Reference Value = 28.35 V/m ; Power Drift = 0.14 dB
Peak SAR (extrapolated) = 1.49 W/kg
SAR(1 g) = 0.901 W/kg ; SAR(10 g) = 0.493 W/kg
Maximum value of SAR (measured) = 1.10 W/kg



0 dB = $1.10 \text{ W/kg} = 0.41 \text{ dBW/kg}$

20_WCDMA II_LAT_RMC 12.2Kbps_Bottom side_10mm_Ch9400

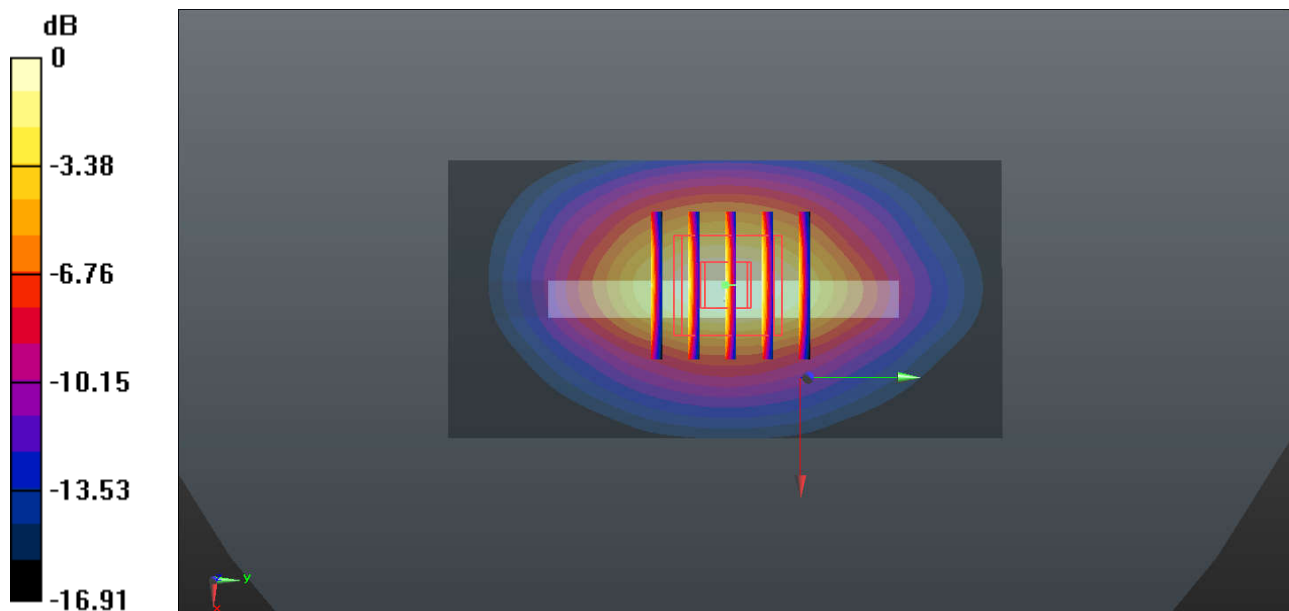
Communication System: UID 0, WCDMA (0); Frequency: 1880 MHz; Duty Cycle: 1:1
Medium: HSL_1900 Medium parameters used: $f = 1880$ MHz; $\sigma = 1.407$ S/m; $\epsilon_r = 39.925$; $\rho = 1000$ kg/m³
Ambient Temperature : 23.3 °C; Liquid Temperature : 22.7 °C

DASY5 Configuration:

- Probe: EX3DV4 - SN3857; ConvF(8.1, 8.1, 8.1); Calibrated: 2019.5.27
- Sensor-Surface: 1.4mm (Mechanical Surface Detection)
- Electronics: DAE4 Sn1210; Calibrated: 2019.7.23
- Phantom: SAM1; Type: SAM; Serial: TP-1697
- Measurement SW: DASY52, Version 52.10 (1); SEMCAD X Version 14.6.11 (7439)

Ch9400/Area Scan (41x81x1): Interpolated grid: dx=1.500 mm, dy=1.500 mm
Maximum value of SAR (interpolated) = 1.20 W/kg

Ch9400/Zoom Scan (5x5x7)/Cube 0: Measurement grid: dx=8mm, dy=8mm, dz=5mm
Reference Value = 28.84 V/m; Power Drift = 0.17 dB
Peak SAR (extrapolated) = 1.62 W/kg
SAR(1 g) = 0.947 W/kg; SAR(10 g) = 0.506 W/kg
Maximum value of SAR (measured) = 1.18 W/kg



0 dB = 1.18 W/kg = 0.72 dBW/kg

21_LTE Band 26_15M_QPSK_1RB_0Offset_Top Side_10mm_Ch26865

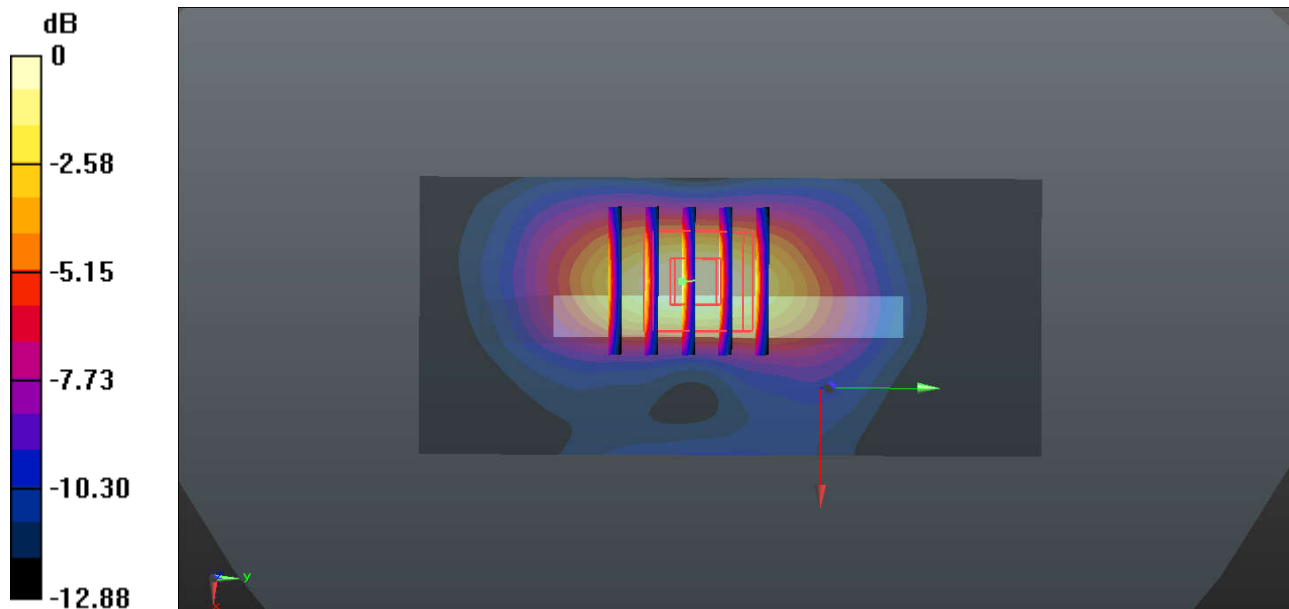
Communication System: UID 0, LTE-FDD (0); Frequency: 831.5 MHz;Duty Cycle: 1:1
Medium: HSL_835 Medium parameters used: $f = 831.5$ MHz; $\sigma = 0.922$ S/m; $\epsilon_r = 41.201$; $\rho = 1000$ kg/m³
Ambient Temperature : 23.3 °C ; Liquid Temperature : 22.7 °C

DASY5 Configuration:

- Probe: EX3DV4 - SN3857; ConvF(9.48, 9.48, 9.48); Calibrated: 2019.5.27
- Sensor-Surface: 1.4mm (Mechanical Surface Detection)
- Electronics: DAE4 Sn1210; Calibrated: 2019.7.23
- Phantom: SAM1; Type: SAM; Serial: TP-1697
- Measurement SW: DASY52, Version 52.10 (1); SEMCAD X Version 14.6.11 (7439)

Ch26865/Area Scan (41x91x1): Interpolated grid: dx=1.500 mm, dy=1.500 mm
Maximum value of SAR (interpolated) = 0.414 W/kg

Ch26865/Zoom Scan (5x5x7)/Cube 0: Measurement grid: dx=8mm, dy=8mm, dz=5mm
Reference Value = 16.20 V/m; Power Drift = 0.07 dB
Peak SAR (extrapolated) = 0.618 W/kg
SAR(1 g) = 0.321 W/kg; SAR(10 g) = 0.165 W/kg
Maximum value of SAR (measured) = 0.400 W/kg



0 dB = 0.400 W/kg = -3.98 dBW/kg

22_LTE Band 4_LAT_20M_QPSK_100RB_0Offset_Bottom side_10mm_Ch20175

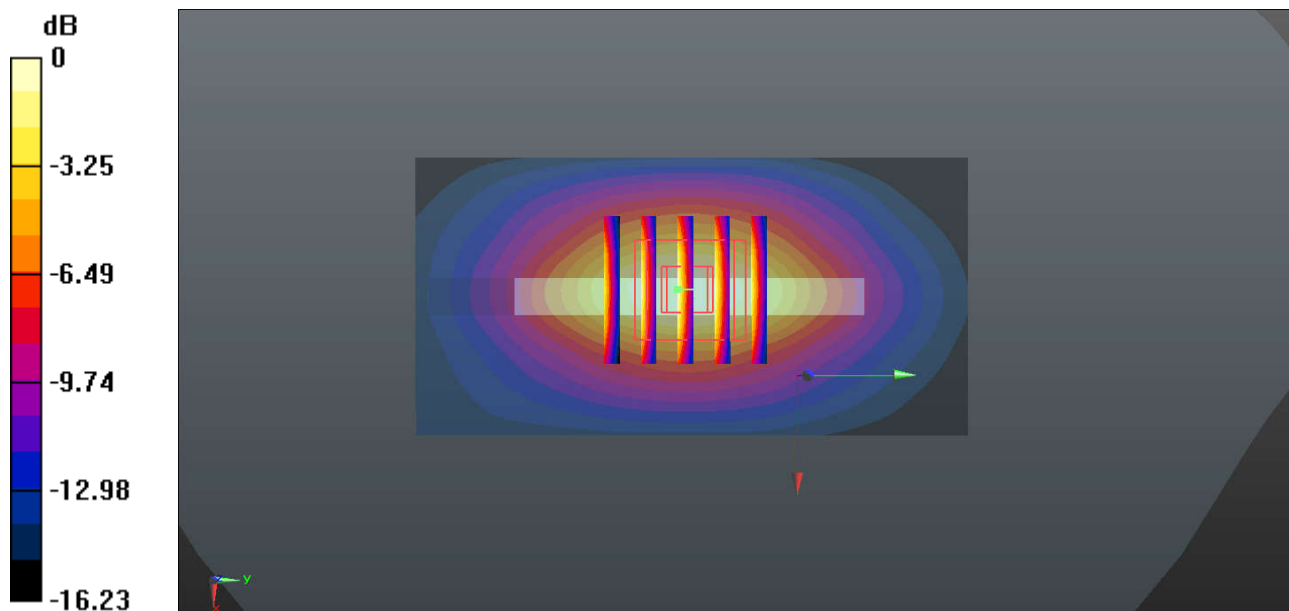
Communication System: UID 0, LTE-FDD (0); Frequency: 1732.5 MHz; Duty Cycle: 1:1
Medium: HSL_1750 Medium parameters used: $f = 1732.5$ MHz; $\sigma = 1.349$ S/m; $\epsilon_r = 41.429$; $\rho = 1000$ kg/m³
Ambient Temperature : 23.4 °C ; Liquid Temperature : 22.8 °C

DASY5 Configuration:

- Probe: EX3DV4 - SN3857; ConvF(8.46, 8.46, 8.46); Calibrated: 2019.5.27
- Sensor-Surface: 1.4mm (Mechanical Surface Detection)
- Electronics: DAE4 Sn1210; Calibrated: 2019.7.23
- Phantom: SAM1; Type: SAM; Serial: TP-1697
- Measurement SW: DASY52, Version 52.10 (1); SEMCAD X Version 14.6.11 (7439)

Ch20175/Area Scan (41x81x1): Interpolated grid: dx=1.500 mm, dy=1.500 mm
Maximum value of SAR (interpolated) = 1.09 W/kg

Ch20175/Zoom Scan (5x5x7)/Cube 0: Measurement grid: dx=8mm, dy=8mm, dz=5mm
Reference Value = 29.07 V/m; Power Drift = -0.08 dB
Peak SAR (extrapolated) = 1.41 W/kg
SAR(1 g) = 0.860 W/kg; SAR(10 g) = 0.472 W/kg
Maximum value of SAR (measured) = 1.06 W/kg



0 dB = 1.06 W/kg = 0.25 dBW/kg

23_LTE Band 2_LAT_20M_QPSK_100RB_0Offset_Bottom side_10mm_Ch18900

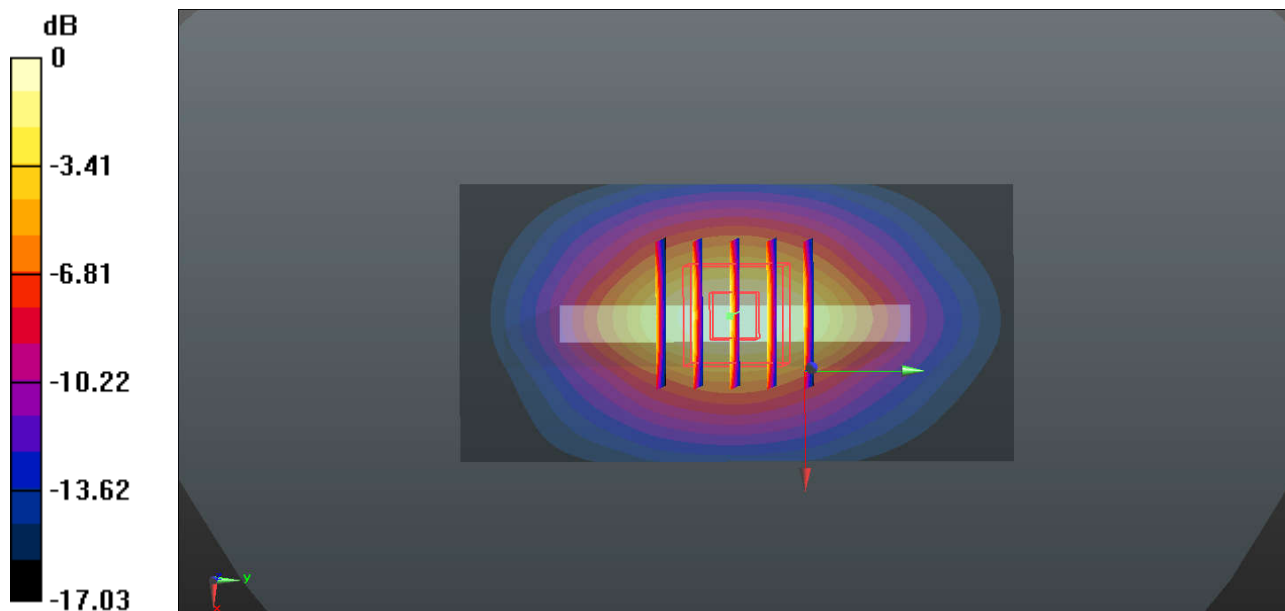
Communication System: UID 0, LTE-FDD (0); Frequency: 1880 MHz;Duty Cycle: 1:1
 Medium: HSL_1900 Medium parameters used: $f = 1880$ MHz; $\sigma = 1.407$ S/m; $\epsilon_r = 39.925$; $\rho = 1000$ kg/m³
 Ambient Temperature : 23.3 °C ; Liquid Temperature : 22.7 °C

DASY5 Configuration:

- Probe: EX3DV4 - SN3857; ConvF(8.1, 8.1, 8.1); Calibrated: 2019.5.27
- Sensor-Surface: 1.4mm (Mechanical Surface Detection)
- Electronics: DAE4 Sn1210; Calibrated: 2019.7.23
- Phantom: SAM1; Type: SAM; Serial: TP-1697
- Measurement SW: DASY52, Version 52.10 (1); SEMCAD X Version 14.6.11 (7439)

Ch18900/Area Scan (41x81x1): Interpolated grid: dx=1.500 mm, dy=1.500 mm
 Maximum value of SAR (interpolated) = 1.23 W/kg

Ch18900/Zoom Scan (5x5x7)/Cube 0: Measurement grid: dx=8mm, dy=8mm, dz=5mm
 Reference Value = 30.37 V/m; Power Drift = -0.08 dB
 Peak SAR (extrapolated) = 1.66 W/kg
SAR(1 g) = 0.970 W/kg; SAR(10 g) = 0.518 W/kg
 Maximum value of SAR (measured) = 1.21 W/kg



0 dB = 1.21 W/kg = 0.83 dBW/kg

24_LTE Band 7_UAT_20M_QPSK_1RB_99Offset_Left Side_10mm_Ch21350

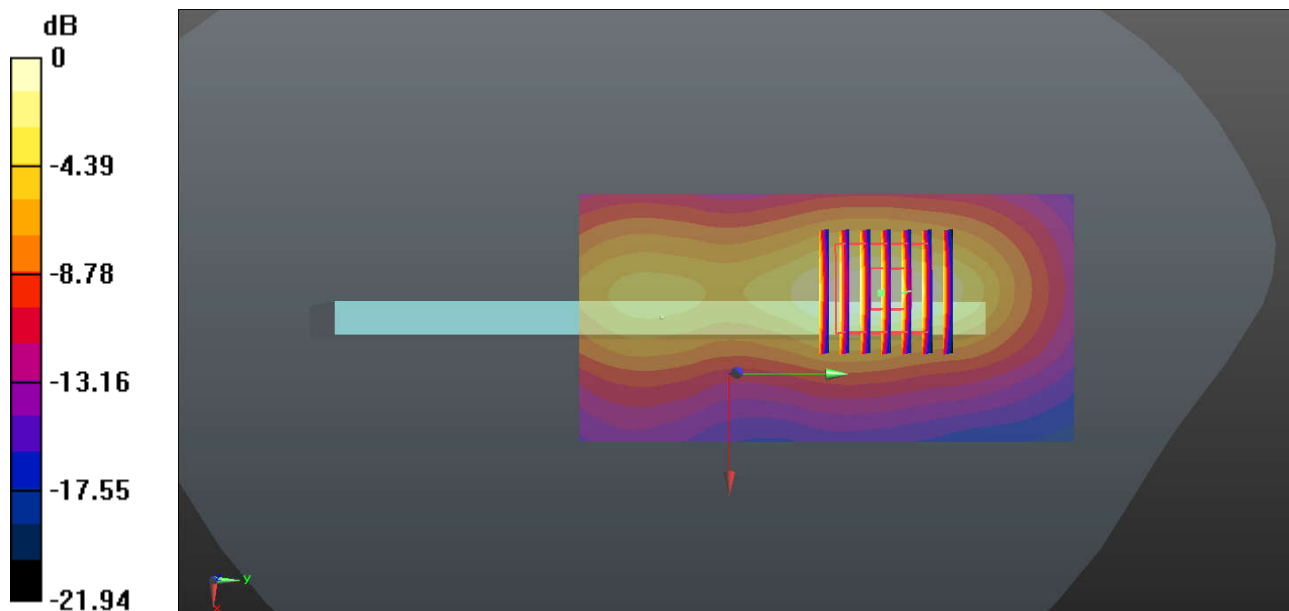
Communication System: UID 0, LTE-FDD (0); Frequency: 2560 MHz; Duty Cycle: 1:1
Medium: HSL_2600 Medium parameters used: $f = 2560$ MHz; $\sigma = 2.003$ S/m; $\epsilon_r = 38.419$; $\rho = 1000$ kg/m³
Ambient Temperature : 23.3 °C ; Liquid Temperature : 22.2 °C

DASY5 Configuration:

- Probe: EX3DV4 - SN3857; ConvF(7.31, 7.31, 7.31); Calibrated: 2019.5.27
- Sensor-Surface: 1.4mm (Mechanical Surface Detection)
- Electronics: DAE4 Sn1210; Calibrated: 2019.7.23
- Phantom: SAM1; Type: SAM; Serial: TP-1697
- Measurement SW: DASY52, Version 52.10 (1); SEMCAD X Version 14.6.11 (7439)

Ch21350/Area Scan (51x101x1): Interpolated grid: dx=1.200 mm, dy=1.200 mm
Maximum value of SAR (interpolated) = 1.20 W/kg

Ch21350/Zoom Scan (7x7x7)/Cube 0: Measurement grid: dx=5mm, dy=5mm, dz=5mm
Reference Value = 15.61 V/m; Power Drift = 0.15 dB
Peak SAR (extrapolated) = 1.89 W/kg
SAR(1 g) = 0.921 W/kg; SAR(10 g) = 0.427 W/kg
Maximum value of SAR (measured) = 1.21 W/kg



0 dB = 1.21 W/kg = 0.83 dBW/kg

25_LTE Band 38_LAT_20M_QPSK_100RB_0Offset_Bottom side_10mm_Ch38000

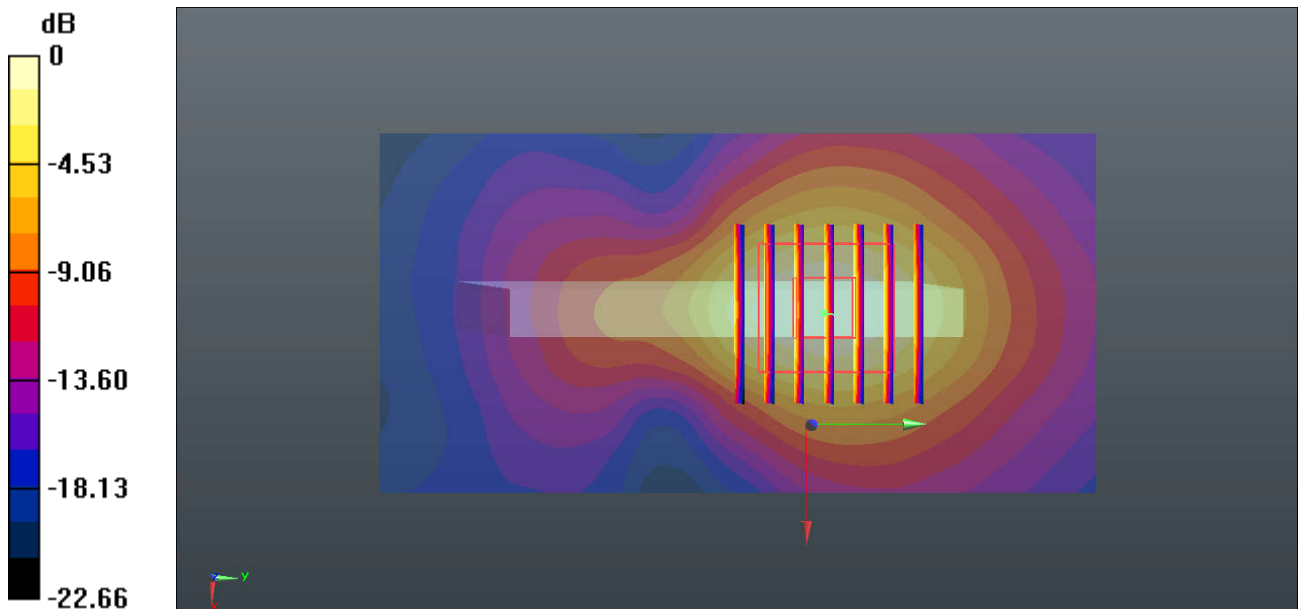
Communication System: UID 0, LTE-TDD (0); Frequency: 2595 MHz; Duty Cycle: 1:1.59
 Medium: HSL_2600 Medium parameters used: $f = 2595$ MHz; $\sigma = 2.042$ S/m; $\epsilon_r = 38.278$; $\rho = 1000$ kg/m³
 Ambient Temperature : 23.3 °C ; Liquid Temperature : 22.2 °C

DASY5 Configuration:

- Probe: EX3DV4 - SN3857; ConvF(7.31, 7.31, 7.31); Calibrated: 2019.5.27
- Sensor-Surface: 1.4mm (Mechanical Surface Detection)
- Electronics: DAE4 Sn1210; Calibrated: 2019.7.23
- Phantom: SAM1; Type: SAM; Serial: TP-1697
- Measurement SW: DASY52, Version 52.10 (1); SEMCAD X Version 14.6.11 (7439)

Ch38000/Area Scan (51x101x1): Interpolated grid: dx=1.200 mm, dy=1.200 mm
 Maximum value of SAR (interpolated) = 1.32 W/kg

Ch38000/Zoom Scan (7x7x7)/Cube 0: Measurement grid: dx=5mm, dy=5mm, dz=5mm
 Reference Value = 19.56 V/m; Power Drift = -0.09 dB
 Peak SAR (extrapolated) = 1.94 W/kg
SAR(1 g) = 0.954 W/kg; SAR(10 g) = 0.453 W/kg
 Maximum value of SAR (measured) = 1.24 W/kg



0 dB = 1.24 W/kg = 0.93 dBW/kg

26_WLAN2.4GHz_802.11b 1Mbps_Top Side_10mm_Ant1_Ch11

Communication System: UID 0, 802.11b (0); Frequency: 2462 MHz; Duty Cycle: 1:1
Medium: HSL_2450 Medium parameters used: $f = 2462$ MHz; $\sigma = 1.884$ S/m; $\epsilon_r = 38.855$; $\rho = 1000$ kg/m³
Ambient Temperature : 23.3 °C ; Liquid Temperature : 22.3 °C

DASY5 Configuration:

- Probe: EX3DV4 - SN3857; ConvF(7.5, 7.5, 7.5); Calibrated: 2019.5.27
- Sensor-Surface: 1.4mm (Mechanical Surface Detection)
- Electronics: DAE4 Sn1210; Calibrated: 2019.7.23
- Phantom: SAM1; Type: SAM; Serial: TP-1697
- Measurement SW: DASY52, Version 52.10 (1); SEMCAD X Version 14.6.11 (7439)

Ch11/Area Scan (51x81x1): Interpolated grid: dx=1.200 mm, dy=1.200 mm

Maximum value of SAR (interpolated) = 0.489 W/kg

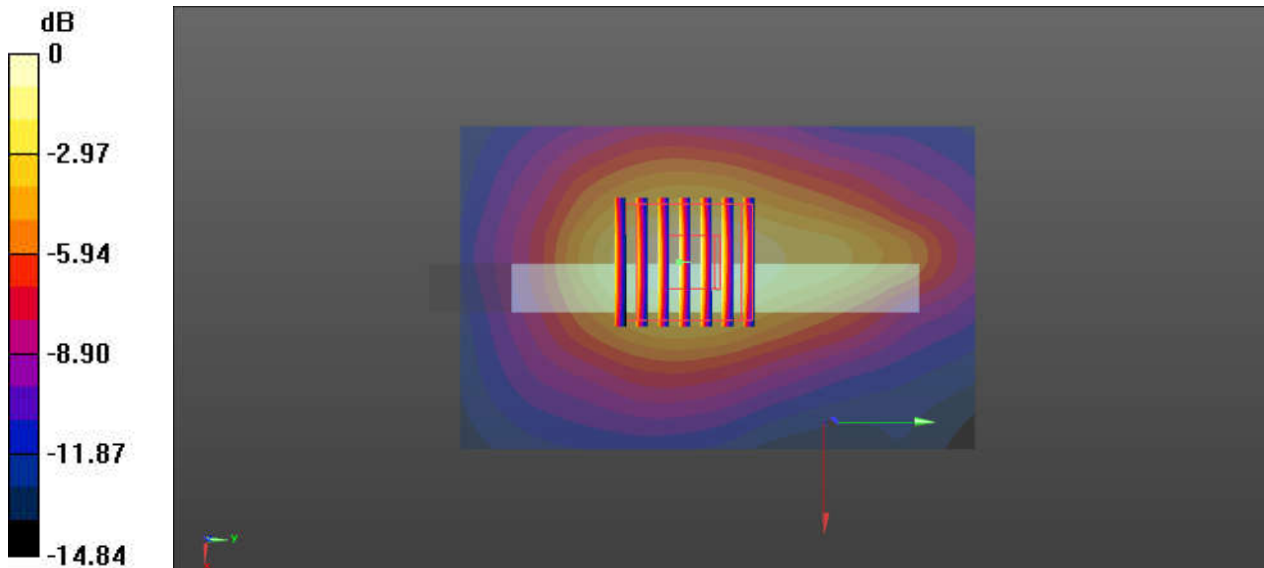
Ch11/Zoom Scan (7x7x7)/Cube 0: Measurement grid: dx=4mm, dy=4mm, dz=1.4mm

Reference Value = 15.03 V/m; Power Drift = 0.05 dB

Peak SAR (extrapolated) = 0.600 W/kg

SAR(1 g) = 0.305 W/kg; SAR(10 g) = 0.160 W/kg

Maximum value of SAR (measured) = 0.479 W/kg



0 dB = 0.489 W/kg = -3.11 dBW/kg

27_Bluetooth_1Mbps_Front_10mm_Ch0

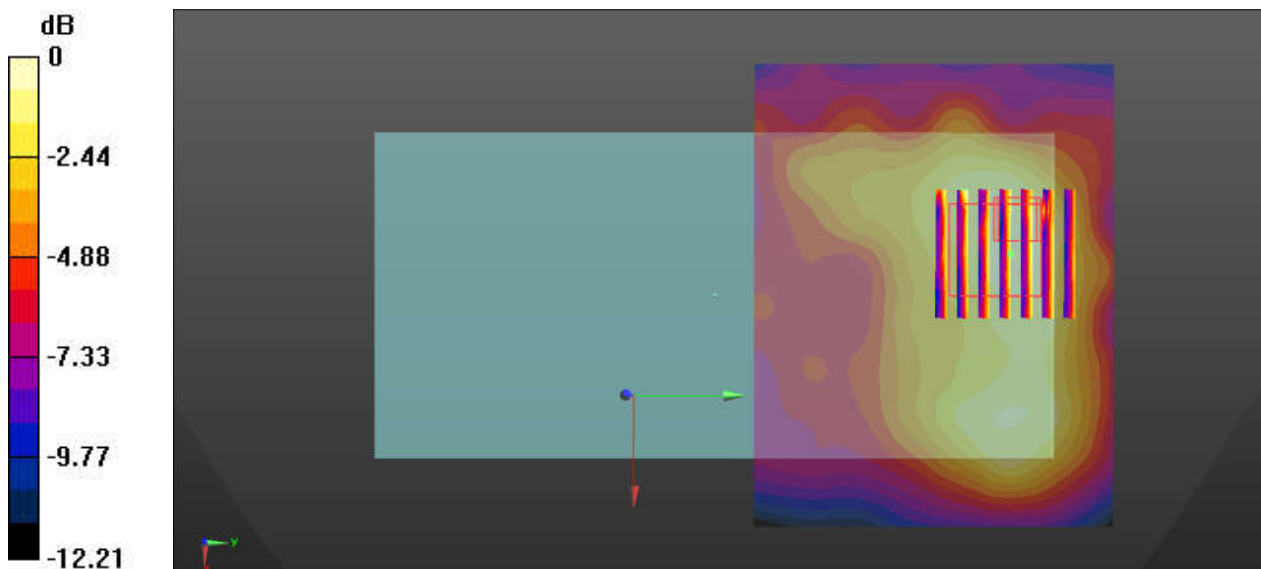
Communication System: UID 0, Bluetooth (0); Frequency: 2402 MHz; Duty Cycle: 1:1.304
Medium: HSL_2450 Medium parameters used: $f = 2402$ MHz; $\sigma = 1.811$ S/m; $\epsilon_r = 39.093$; $\rho = 1000$ kg/m³
Ambient Temperature : 23.3 °C ; Liquid Temperature : 22.3 °C

DASY5 Configuration:

- Probe: EX3DV4 - SN3857; ConvF(7.5, 7.5, 7.5); Calibrated: 2019.5.27
- Sensor-Surface: 1.4mm (Mechanical Surface Detection)
- Electronics: DAE4 Sn1210; Calibrated: 2019.7.23
- Phantom: SAM1; Type: SAM; Serial: TP-1697
- Measurement SW: DASY52, Version 52.10 (1); SEMCAD X Version 14.6.11 (7439)

Ch0/Area Scan (91x71x1): Interpolated grid: dx=1.200 mm, dy=1.200 mm
Maximum value of SAR (interpolated) = 0.0380 W/kg

Ch0/Zoom Scan (7x7x7)/Cube 0: Measurement grid: dx=5mm, dy=5mm, dz=5mm
Reference Value = 1.528 V/m; Power Drift = 0.03 dB
Peak SAR (extrapolated) = 0.155 W/kg
SAR(1 g) = 0.024 W/kg; SAR(10 g) = 0.014 W/kg
Maximum value of SAR (measured) = 0.0422 W/kg



0 dB = 0.0380 W/kg = -14.20 dBW/kg

28_WLAN5GHz_802.11a_6Mbps_Back_10mm_Ant1_Ch48

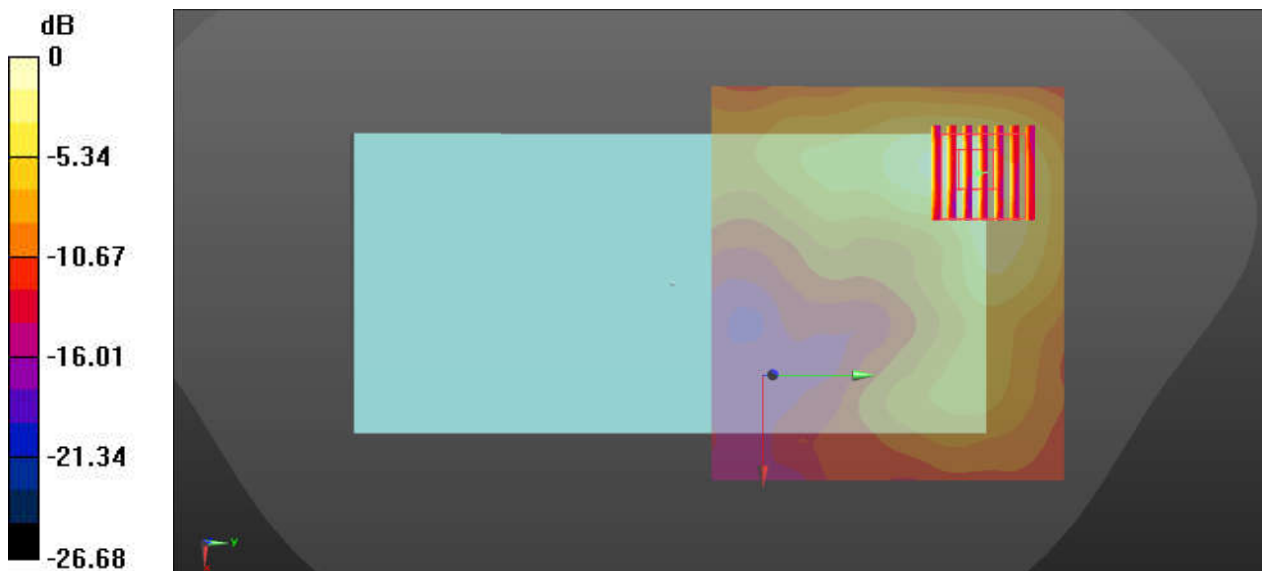
Communication System: UID 0, 802.11a (0); Frequency: 5240 MHz; Duty Cycle: 1:1.018
Medium: HSL_5000 Medium parameters used: $f = 5240$ MHz; $\sigma = 4.542$ S/m; $\epsilon_r = 34.793$; $\rho = 1000$ kg/m³
Ambient Temperature : 23.3 °C ; Liquid Temperature : 22.3 °C

DASY5 Configuration:

- Probe: EX3DV4 - SN3857; ConvF(5.19, 5.19, 5.19); Calibrated: 2019.5.27
- Sensor-Surface: 1.4mm (Mechanical Surface Detection)
- Electronics: DAE4 Sn1210; Calibrated: 2019.7.23
- Phantom: SAM1; Type: SAM; Serial: TP-1697
- Measurement SW: DASY52, Version 52.10 (1); SEMCAD X Version 14.6.11 (7439)

Ch48/Area Scan (101x91x1): Interpolated grid: dx=1.000 mm, dy=1.000 mm
Maximum value of SAR (interpolated) = 0.904 W/kg

Ch48/Zoom Scan (7x7x7)/Cube 0: Measurement grid: dx=4mm, dy=4mm, dz=1.4mm
Reference Value = 2.435 V/m; Power Drift = 0.03 dB
Peak SAR (extrapolated) = 1.34 W/kg
SAR(1 g) = 0.401 W/kg; SAR(10 g) = 0.166 W/kg
Maximum value of SAR (measured) = 0.872 W/kg



0 dB = 0.904 W/kg = -0.44 dBW/kg

29_WLAN5GHz_802.11a 6Mbps_Front_10mm_Ant1_Ch161

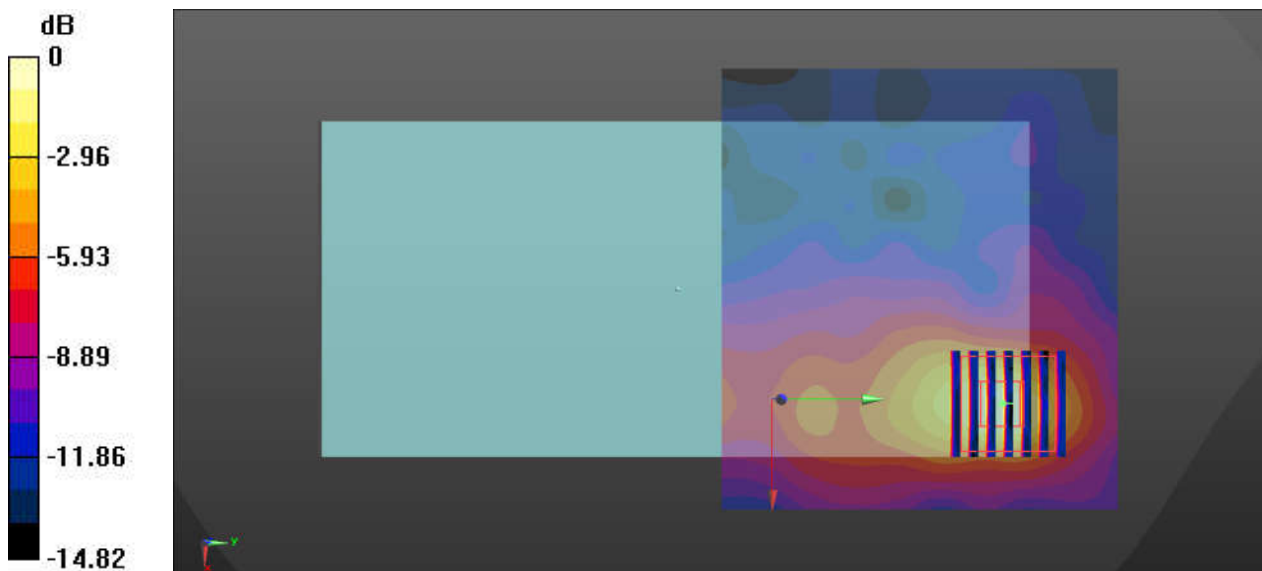
Communication System: UID 0, 802.11a (0); Frequency: 5805 MHz; Duty Cycle: 1:1.018
Medium: HSL_5000 Medium parameters used: $f = 5805$ MHz; $\sigma = 5.108$ S/m; $\epsilon_r = 34.011$; $\rho = 1000$ kg/m³
Ambient Temperature : 23.3 °C ; Liquid Temperature : 22.3 °C

DASY5 Configuration:

- Probe: EX3DV4 - SN3857; ConvF(5.17, 5.17, 5.17); Calibrated: 2019.5.27
- Sensor-Surface: 1.4mm (Mechanical Surface Detection)
- Electronics: DAE4 Sn1210; Calibrated: 2019.7.23
- Phantom: SAM1; Type: SAM; Serial: TP-1697
- Measurement SW: DASY52, Version 52.10 (1); SEMCAD X Version 14.6.11 (7439)

Ch161/Area Scan (101x91x1): Interpolated grid: dx=1.000 mm, dy=1.000 mm
Maximum value of SAR (interpolated) = 0.712 W/kg

Ch161/Zoom Scan (7x7x7)/Cube 0: Measurement grid: dx=4mm, dy=4mm, dz=1.4mm
Reference Value = 3.653 V/m; Power Drift = 0.03 dB
Peak SAR (extrapolated) = 1.21 W/kg
SAR(1 g) = 0.297 W/kg; SAR(10 g) = 0.119 W/kg
Maximum value of SAR (measured) = 0.705 W/kg



0 dB = 0.712 W/kg = -1.48 dBW/kg

30_GSM 850-LAT_GPRS 4 Tx slots_Back_15mm_Ch189

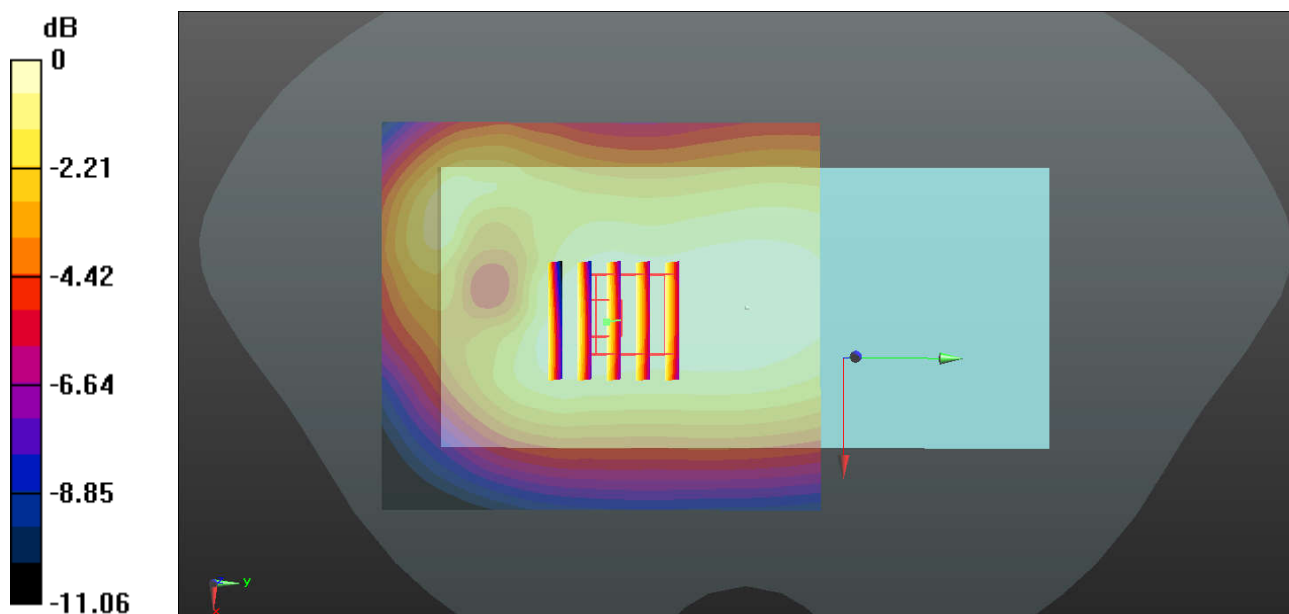
Communication System: UID 0, GSM850 (0); Frequency: 836.4 MHz; Duty Cycle: 1:2.08
Medium: HSL_835 Medium parameters used: $f = 836.4$ MHz; $\sigma = 0.926$ S/m; $\epsilon_r = 41.15$; $\rho = 1000$ kg/m³
Ambient Temperature : 23.3 °C ; Liquid Temperature : 22.7 °C

DASY5 Configuration:

- Probe: EX3DV4 - SN3857; ConvF(9.48, 9.48, 9.48); Calibrated: 2019.5.27
- Sensor-Surface: 1.4mm (Mechanical Surface Detection)
- Electronics: DAE4 Sn1210; Calibrated: 2019.7.23
- Phantom: SAM1; Type: SAM; Serial: TP-1697
- Measurement SW: DASY52, Version 52.10 (1); SEMCAD X Version 14.6.11 (7439)

Ch189/Area Scan (71x81x1): Interpolated grid: dx=1.500 mm, dy=1.500 mm
Maximum value of SAR (interpolated) = 0.154 W/kg

Ch189/Zoom Scan (5x5x7)/Cube 0: Measurement grid: dx=8mm, dy=8mm, dz=5mm
Reference Value = 13.12 V/m; Power Drift = -0.02 dB
Peak SAR (extrapolated) = 0.174 W/kg
SAR(1 g) = 0.138 W/kg; SAR(10 g) = 0.105 W/kg
Maximum value of SAR (measured) = 0.151 W/kg



0 dB = 0.151 W/kg = -8.21 dBW/kg

31_GSM 1900_LAT_GPRS 4 Tx slots_Back_15mm_Ch810

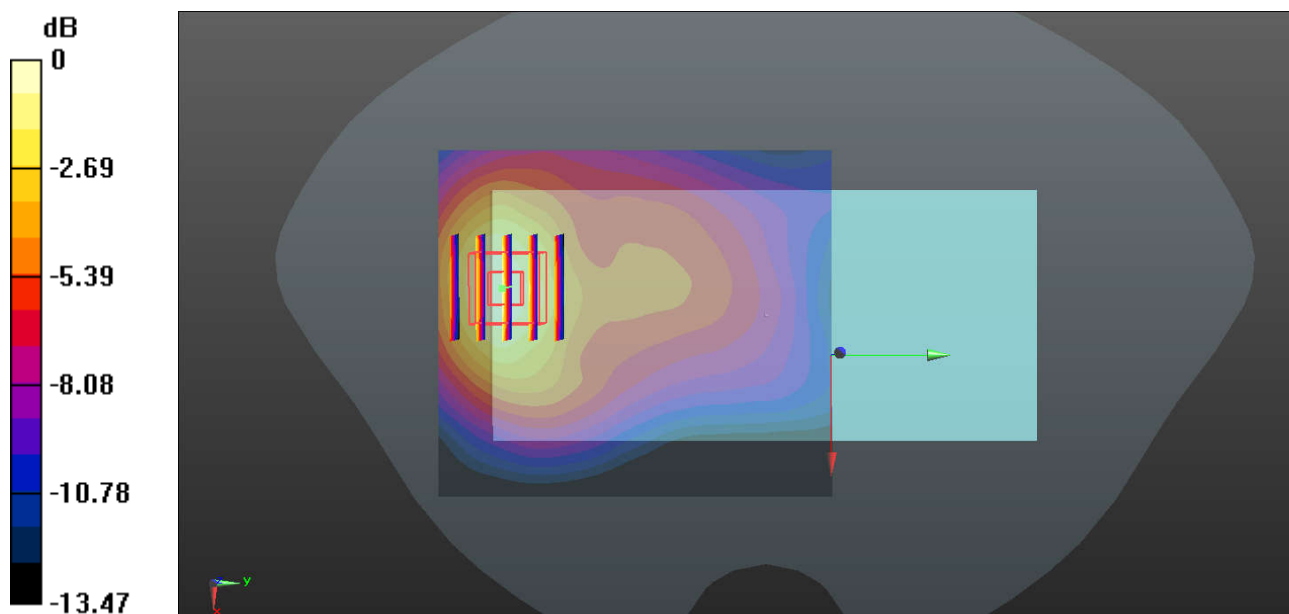
Communication System: UID 0, GSM1900 (0); Frequency: 1909.8 MHz; Duty Cycle: 1:2.08
Medium: HSL_1900 Medium parameters used: $f = 1910$ MHz; $\sigma = 1.439$ S/m; $\epsilon_r = 39.788$; $\rho = 1000$ kg/m³
Ambient Temperature : 23.3 °C; Liquid Temperature : 22.7 °C

DASY5 Configuration:

- Probe: EX3DV4 - SN3857; ConvF(8.1, 8.1, 8.1); Calibrated: 2019.5.27
- Sensor-Surface: 1.4mm (Mechanical Surface Detection)
- Electronics: DAE4 Sn1210; Calibrated: 2019.7.23
- Phantom: SAM1; Type: SAM; Serial: TP-1697
- Measurement SW: DASY52, Version 52.10 (1); SEMCAD X Version 14.6.11 (7439)

Ch810/Area Scan (71x81x1): Interpolated grid: dx=1.500 mm, dy=1.500 mm
Maximum value of SAR (interpolated) = 0.293 W/kg

Ch810/Zoom Scan (5x5x7)/Cube 0: Measurement grid: dx=8mm, dy=8mm, dz=5mm
Reference Value = 6.032 V/m; Power Drift = 0.13 dB
Peak SAR (extrapolated) = 0.375 W/kg
SAR(1 g) = 0.246 W/kg; SAR(10 g) = 0.150 W/kg
Maximum value of SAR (measured) = 0.294 W/kg



0 dB = 0.294 W/kg = -5.32 dBW/kg

32_WCDMA V-LAT_RMC 12.2Kbps_Back_15mm_Ch4233

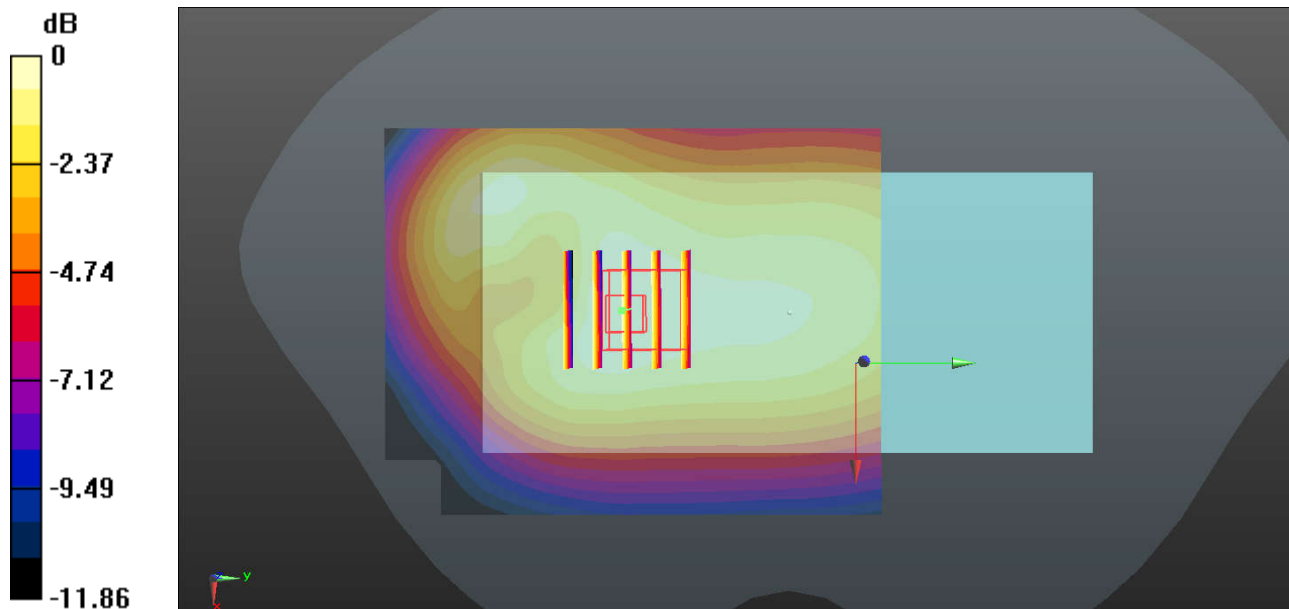
Communication System: UID 0, WCDMA (0); Frequency: 846.6 MHz; Duty Cycle: 1:1
Medium: HSL_835 Medium parameters used: $f = 847$ MHz; $\sigma = 0.936$ S/m; $\epsilon_r = 41.041$; $\rho = 1000$ kg/m³
Ambient Temperature : 23.3 °C ; Liquid Temperature : 22.7 °C

DASY5 Configuration:

- Probe: EX3DV4 - SN3857; ConvF(9.48, 9.48, 9.48); Calibrated: 2019.5.27
- Sensor-Surface: 1.4mm (Mechanical Surface Detection)
- Electronics: DAE4 Sn1210; Calibrated: 2019.7.23
- Phantom: SAM1; Type: SAM; Serial: TP-1697
- Measurement SW: DASY52, Version 52.10 (1); SEMCAD X Version 14.6.11 (7439)

Ch4233/Area Scan (71x91x1): Interpolated grid: dx=1.500 mm, dy=1.500 mm
Maximum value of SAR (interpolated) = 0.242 W/kg

Ch4233/Zoom Scan (5x5x7)/Cube 0: Measurement grid: dx=8mm, dy=8mm, dz=5mm
Reference Value = 15.19 V/m; Power Drift = -0.09 dB
Peak SAR (extrapolated) = 0.270 W/kg
SAR(1 g) = 0.212 W/kg; SAR(10 g) = 0.158 W/kg
Maximum value of SAR (measured) = 0.235 W/kg



0 dB = 0.235 W/kg = -6.29 dBW/kg

33_WCDMA IV_LAT_RMC 12.2Kbps_Back_15mm_Ch1413

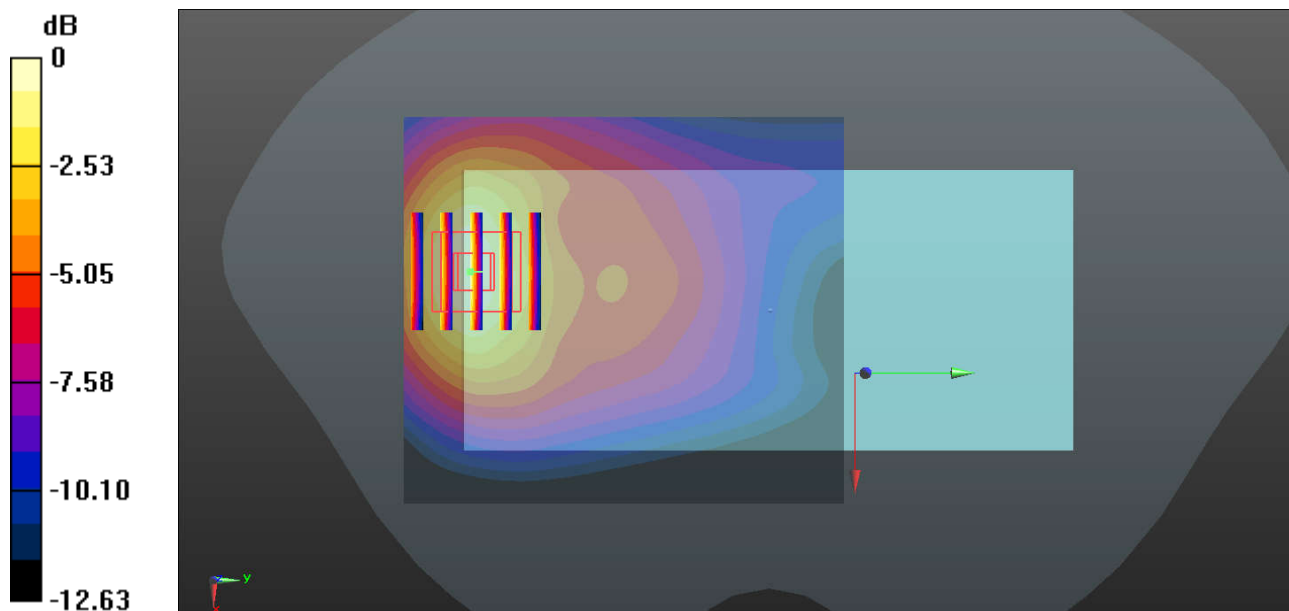
Communication System: UID 0, WCDMA (0); Frequency: 1732.6 MHz; Duty Cycle: 1:1
Medium: HSL_1750 Medium parameters used: $f = 1733$ MHz; $\sigma = 1.349$ S/m; $\epsilon_r = 41.428$; $\rho = 1000$ kg/m³
Ambient Temperature : 23.4 °C ; Liquid Temperature : 22.8 °C

DASY5 Configuration:

- Probe: EX3DV4 - SN3857; ConvF(8.46, 8.46, 8.46); Calibrated: 2019.5.27
- Sensor-Surface: 1.4mm (Mechanical Surface Detection)
- Electronics: DAE4 Sn1210; Calibrated: 2019.7.23
- Phantom: SAM1; Type: SAM; Serial: TP-1697
- Measurement SW: DASY52, Version 52.10 (1); SEMCAD X Version 14.6.11 (7439)

Ch1413/Area Scan (71x81x1): Interpolated grid: dx=1.500 mm, dy=1.500 mm
Maximum value of SAR (interpolated) = 0.864 W/kg

Ch1413/Zoom Scan (5x5x7)/Cube 0: Measurement grid: dx=8mm, dy=8mm, dz=5mm
Reference Value = 8.347 V/m; Power Drift = 0.12 dB
Peak SAR (extrapolated) = 1.07 W/kg
SAR(1 g) = 0.743 W/kg; SAR(10 g) = 0.469 W/kg
Maximum value of SAR (measured) = 0.869 W/kg



0 dB = 0.869 W/kg = -0.61 dBW/kg

34_WCDMA II_LAT_RMC 12.2Kbps_Back_15mm_Ch9538

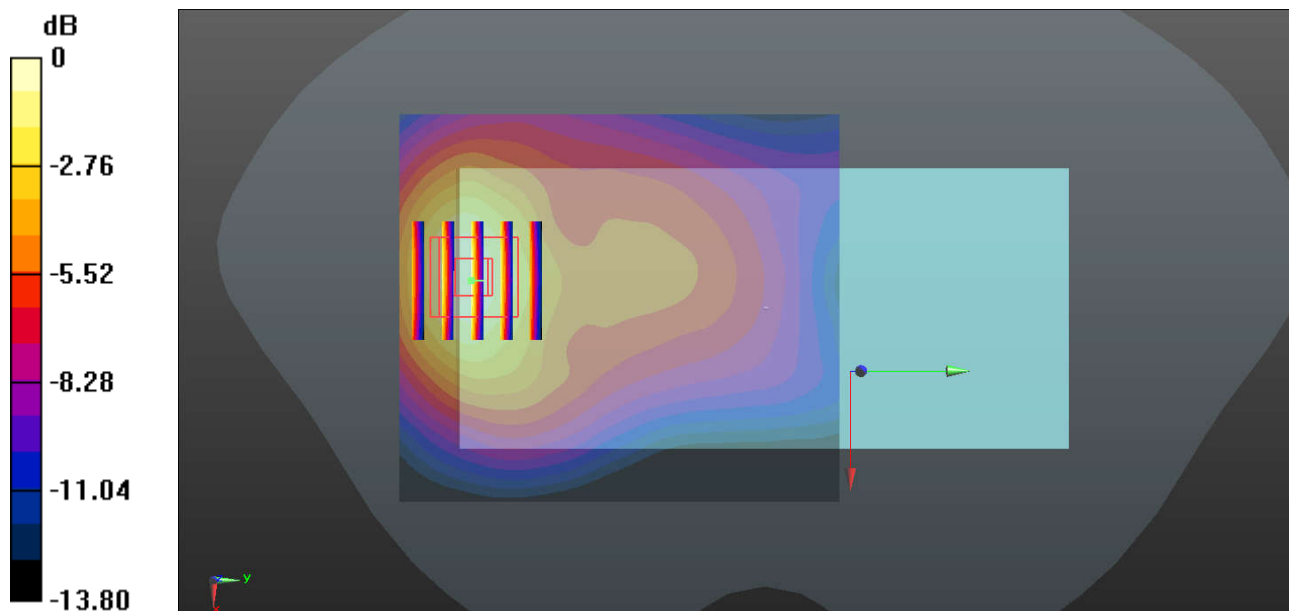
Communication System: UID 0, WCDMA (0); Frequency: 1907.6 MHz; Duty Cycle: 1:1
Medium: HSL_1900 Medium parameters used: $f = 1908$ MHz; $\sigma = 1.437$ S/m; $\epsilon_r = 39.794$; $\rho = 1000$ kg/m³
Ambient Temperature : 23.3 °C ; Liquid Temperature : 22.7 °C

DASY5 Configuration:

- Probe: EX3DV4 - SN3857; ConvF(8.1, 8.1, 8.1); Calibrated: 2019.5.27
- Sensor-Surface: 1.4mm (Mechanical Surface Detection)
- Electronics: DAE4 Sn1210; Calibrated: 2019.7.23
- Phantom: SAM1; Type: SAM; Serial: TP-1697
- Measurement SW: DASY52, Version 52.10 (1); SEMCAD X Version 14.6.11 (7439)

Ch9538/Area Scan (71x81x1): Interpolated grid: dx=1.500 mm, dy=1.500 mm
Maximum value of SAR (interpolated) = 0.797 W/kg

Ch9538/Zoom Scan (5x5x7)/Cube 0: Measurement grid: dx=8mm, dy=8mm, dz=5mm
Reference Value = 9.866 V/m; Power Drift = 0.15 dB
Peak SAR (extrapolated) = 1.01 W/kg
SAR(1 g) = 0.667 W/kg; SAR(10 g) = 0.404 W/kg
Maximum value of SAR (measured) = 0.795 W/kg



0 dB = 0.795 W/kg = -1.00 dBW/kg

35_LTE Band 26_15M_QPSK_1RB_0Offset_Back_15mm_Ch26865

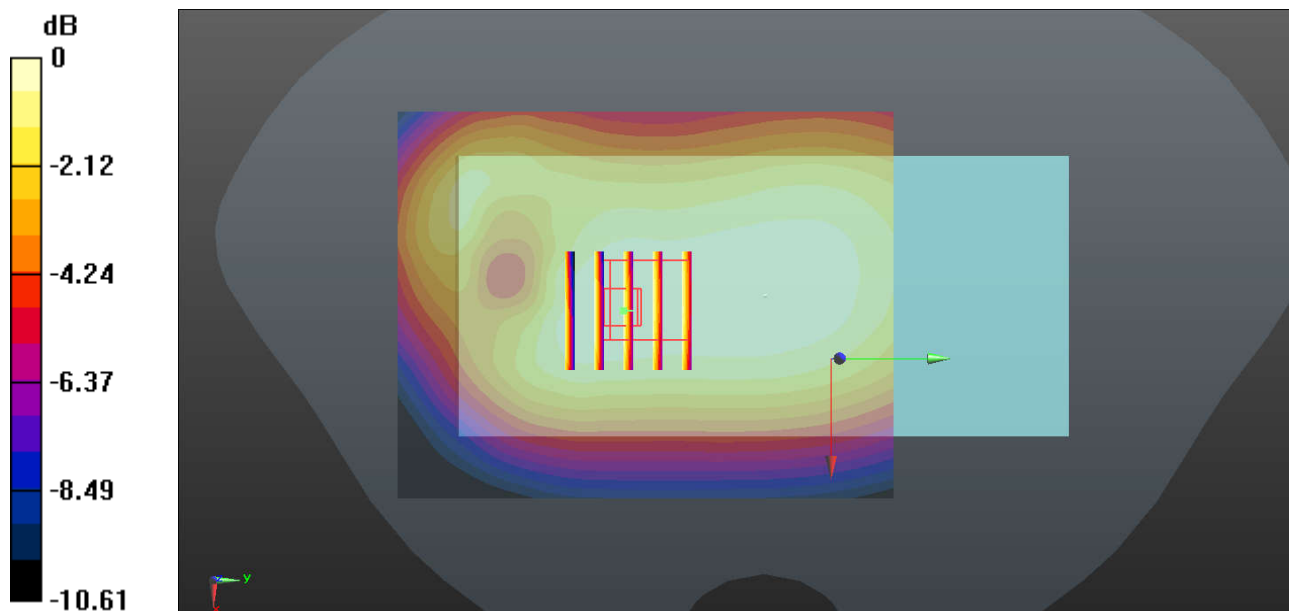
Communication System: UID 0, LTE-FDD (0); Frequency: 831.5 MHz; Duty Cycle: 1:1
Medium: HSL_835 Medium parameters used: $f = 831.5$ MHz; $\sigma = 0.922$ S/m; $\epsilon_r = 41.201$; $\rho = 1000$ kg/m³
Ambient Temperature : 23.3 °C ; Liquid Temperature : 22.7 °C

DASY5 Configuration:

- Probe: EX3DV4 - SN3857; ConvF(9.48, 9.48, 9.48); Calibrated: 2019.5.27
- Sensor-Surface: 1.4mm (Mechanical Surface Detection)
- Electronics: DAE4 Sn1210; Calibrated: 2019.7.23
- Phantom: SAM1; Type: SAM; Serial: TP-1697
- Measurement SW: DASY52, Version 52.10 (1); SEMCAD X Version 14.6.11 (7439)

Ch26865/Area Scan (71x91x1): Interpolated grid: dx=1.500 mm, dy=1.500 mm
Maximum value of SAR (interpolated) = 0.157 W/kg

Ch26865/Zoom Scan (5x5x7)/Cube 0: Measurement grid: dx=8mm, dy=8mm, dz=5mm
Reference Value = 13.44 V/m; Power Drift = -0.01 dB
Peak SAR (extrapolated) = 0.176 W/kg
SAR(1 g) = 0.141 W/kg; SAR(10 g) = 0.108 W/kg
Maximum value of SAR (measured) = 0.154 W/kg



0 dB = 0.154 W/kg = -8.12 dBW/kg

36_LTE Band 4_LAT_20M_QPSK_1RB_0Offset_Back_15mm_Ch20175

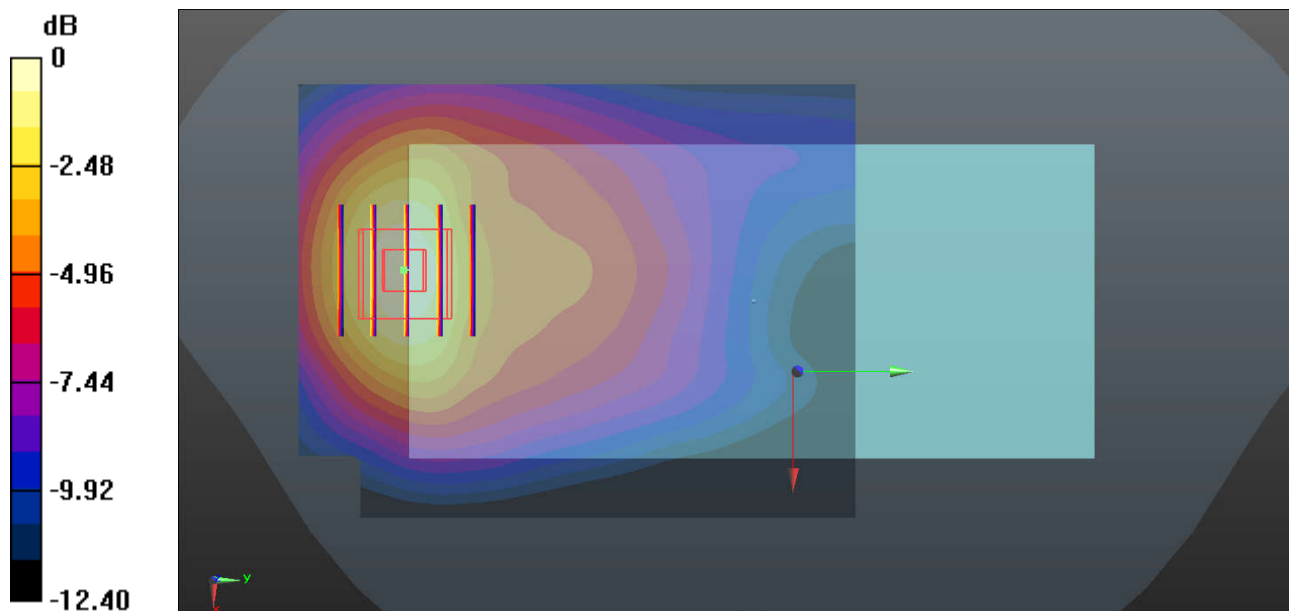
Communication System: UID 0, LTE-FDD (0); Frequency: 1732.5 MHz; Duty Cycle: 1:1
Medium: HSL_1750 Medium parameters used: $f = 1732.5$ MHz; $\sigma = 1.349$ S/m; $\epsilon_r = 41.429$; $\rho = 1000$ kg/m³
Ambient Temperature : 23.4 °C ; Liquid Temperature : 22.8 °C

DASY5 Configuration:

- Probe: EX3DV4 - SN3857; ConvF(8.46, 8.46, 8.46); Calibrated: 2019.5.27
- Sensor-Surface: 1.4mm (Mechanical Surface Detection)
- Electronics: DAE4 Sn1210; Calibrated: 2019.7.23
- Phantom: SAM1; Type: SAM; Serial: TP-1697
- Measurement SW: DASY52, Version 52.10 (1); SEMCAD X Version 14.6.11 (7439)

Ch20175/Area Scan (71x91x1): Interpolated grid: dx=1.500 mm, dy=1.500 mm
Maximum value of SAR (interpolated) = 0.637 W/kg

Ch20175/Zoom Scan (5x5x7)/Cube 0: Measurement grid: dx=8mm, dy=8mm, dz=5mm
Reference Value = 6.911 V/m; Power Drift = 0.04 dB
Peak SAR (extrapolated) = 0.777 W/kg
SAR(1 g) = 0.549 W/kg; SAR(10 g) = 0.351 W/kg
Maximum value of SAR (measured) = 0.643 W/kg



0 dB = 0.643 W/kg = -1.92 dBW/kg

37_LTE Band 2_LAT_20M_QPSK_1RB_0Offset_Back_15mm_Ch18900

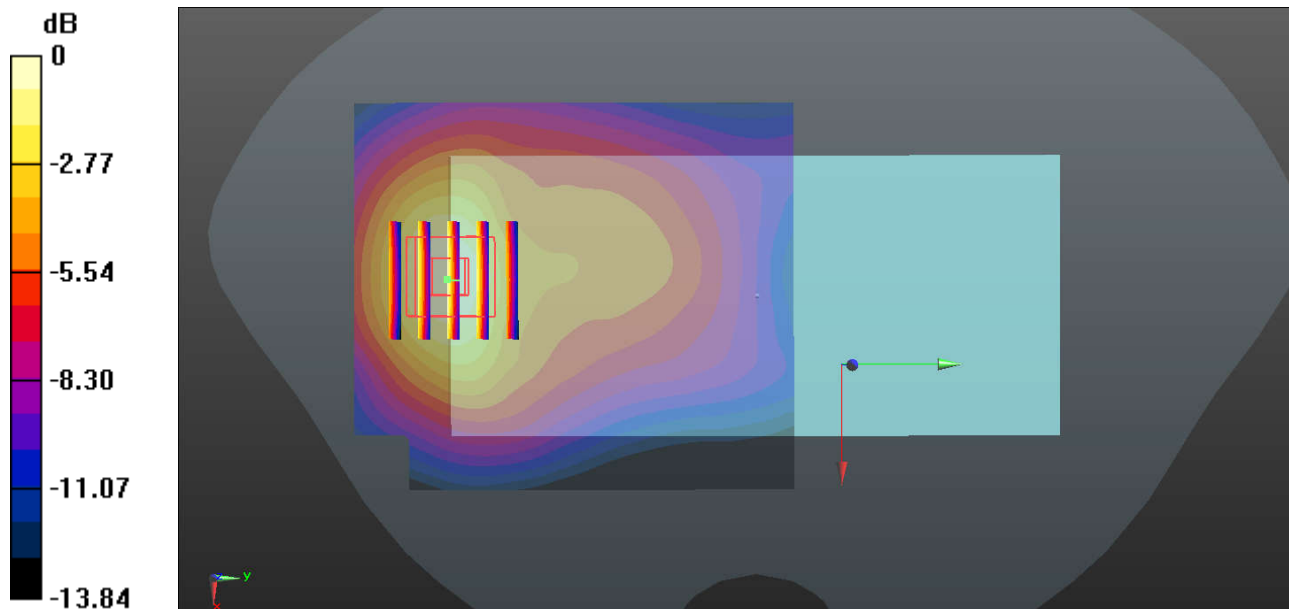
Communication System: UID 0, LTE-FDD (0); Frequency: 1880 MHz; Duty Cycle: 1:1
Medium: HSL_1900 Medium parameters used: $f = 1880$ MHz; $\sigma = 1.407$ S/m; $\epsilon_r = 39.925$; $\rho = 1000$ kg/m³
Ambient Temperature : 23.3 °C ; Liquid Temperature : 22.7 °C

DASY5 Configuration:

- Probe: EX3DV4 - SN3857; ConvF(8.1, 8.1, 8.1); Calibrated: 2019.5.27
- Sensor-Surface: 1.4mm (Mechanical Surface Detection)
- Electronics: DAE4 Sn1210; Calibrated: 2019.7.23
- Phantom: SAM1; Type: SAM; Serial: TP-1697
- Measurement SW: DASY52, Version 52.10 (1); SEMCAD X Version 14.6.11 (7439)

Ch18900/Area Scan (71x81x1): Interpolated grid: dx=1.500 mm, dy=1.500 mm
Maximum value of SAR (interpolated) = 0.628 W/kg

Ch18900/Zoom Scan (5x5x7)/Cube 0: Measurement grid: dx=8mm, dy=8mm, dz=5mm
Reference Value = 7.231 V/m; Power Drift = 0.09 dB
Peak SAR (extrapolated) = 0.781 W/kg
SAR(1 g) = 0.525 W/kg; SAR(10 g) = 0.324 W/kg
Maximum value of SAR (measured) = 0.624 W/kg



0 dB = 0.624 W/kg = -2.05 dBW/kg

38_LTE Band 7_LAT_20M_QPSK_1RB_99Offset_Back_15mm_Ch21350

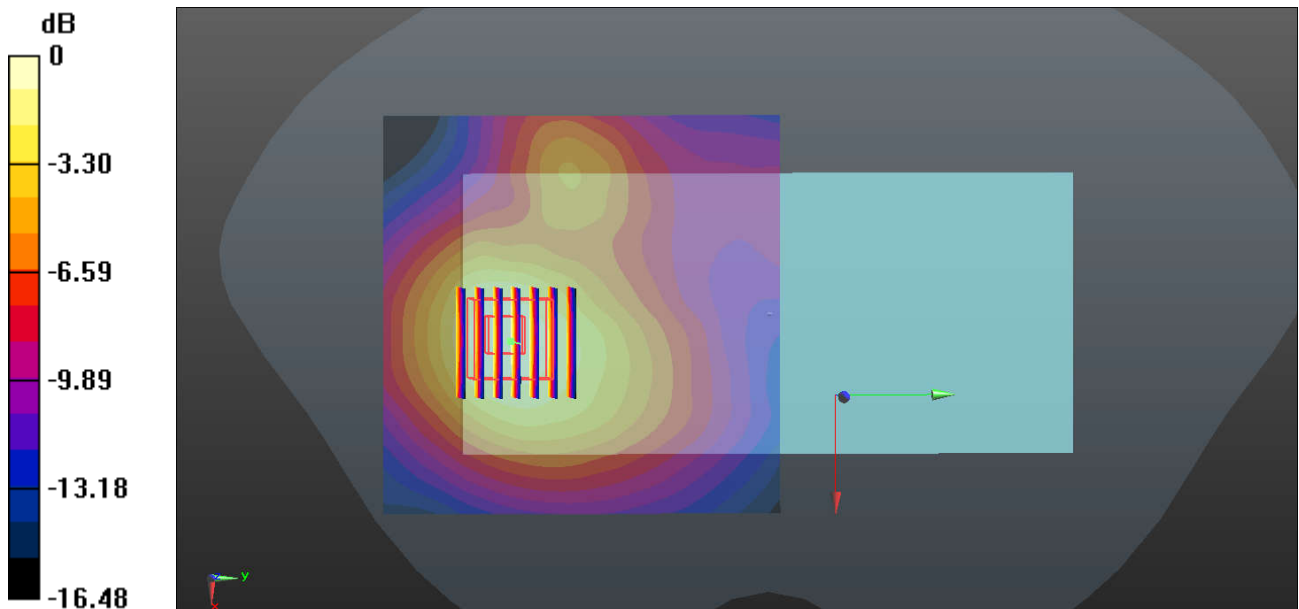
Communication System: UID 0, LTE-FDD (0); Frequency: 2560 MHz; Duty Cycle: 1:1
 Medium: HSL_2600 Medium parameters used: $f = 2560$ MHz; $\sigma = 2.003$ S/m; $\epsilon_r = 38.419$; $\rho = 1000$ kg/m³
 Ambient Temperature : 23.3 °C ; Liquid Temperature : 22.2 °C

DASY5 Configuration:

- Probe: EX3DV4 - SN3857; ConvF(7.31, 7.31, 7.31); Calibrated: 2019.5.27
- Sensor-Surface: 1.4mm (Mechanical Surface Detection)
- Electronics: DAE4 Sn1210; Calibrated: 2019.7.23
- Phantom: SAM1; Type: SAM; Serial: TP-1697
- Measurement SW: DASY52, Version 52.10 (1); SEMCAD X Version 14.6.11 (7439)

Ch21350/Area Scan (91x91x1): Interpolated grid: dx=1.200 mm, dy=1.200 mm
 Maximum value of SAR (interpolated) = 1.05 W/kg

Ch21350/Zoom Scan (7x7x7)/Cube 0: Measurement grid: dx=5mm, dy=5mm, dz=5mm
 Reference Value = 5.866 V/m; Power Drift = 0.08 dB
 Peak SAR (extrapolated) = 1.46 W/kg
SAR(1 g) = 0.819 W/kg; SAR(10 g) = 0.451 W/kg
 Maximum value of SAR (measured) = 1.01 W/kg



0 dB = 1.01 W/kg = 0.04 dBW/kg

39_LTE Band 38_LAT_20M_QPSK_1RB_0Offset_Back_15mm_Ch38000

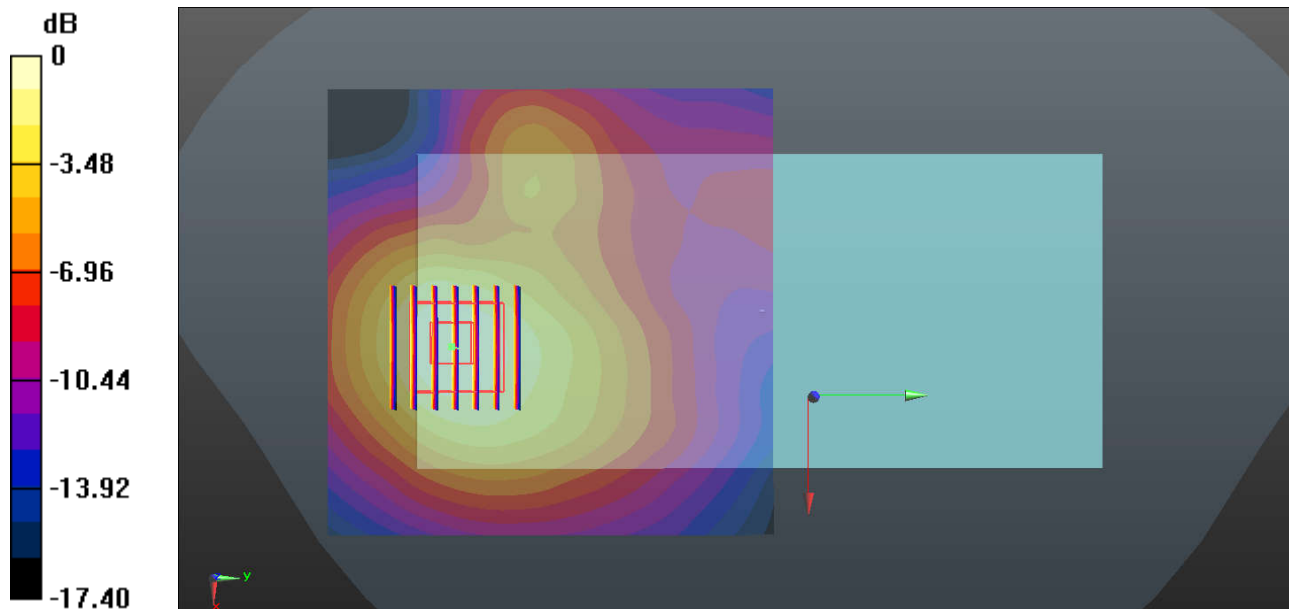
Communication System: UID 0, LTE-TDD (0); Frequency: 2595 MHz; Duty Cycle: 1:1.59
Medium: HSL_2600 Medium parameters used: $f = 2595$ MHz; $\sigma = 2.042$ S/m; $\epsilon_r = 38.278$; $\rho = 1000$ kg/m³
Ambient Temperature : 23.3 °C ; Liquid Temperature : 22.2 °C

DASY5 Configuration:

- Probe: EX3DV4 - SN3857; ConvF(7.31, 7.31, 7.31); Calibrated: 2019.5.27
- Sensor-Surface: 1.4mm (Mechanical Surface Detection)
- Electronics: DAE4 Sn1210; Calibrated: 2019.7.23
- Phantom: SAM1; Type: SAM; Serial: TP-1697
- Measurement SW: DASY52, Version 52.10 (1); SEMCAD X Version 14.6.11 (7439)

Ch38000/Area Scan (91x91x1): Interpolated grid: dx=1.200 mm, dy=1.200 mm
Maximum value of SAR (interpolated) = 0.541 W/kg

Ch38000/Zoom Scan (7x7x7)/Cube 0: Measurement grid: dx=5mm, dy=5mm, dz=5mm
Reference Value = 4.358 V/m; Power Drift = 0.05 dB
Peak SAR (extrapolated) = 0.764 W/kg
SAR(1 g) = 0.431 W/kg; SAR(10 g) = 0.239 W/kg
Maximum value of SAR (measured) = 0.532 W/kg



0 dB = 0.532 W/kg = -2.74 dBW/kg

40_Bluetooth_1Mbps_Front_15mm_Ch0

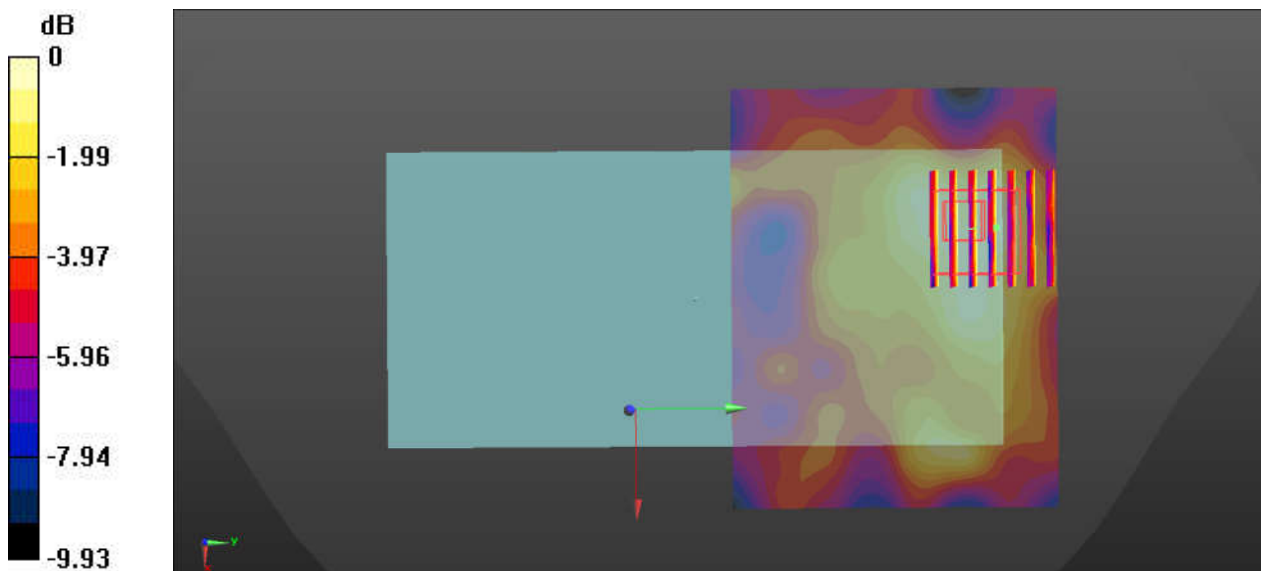
Communication System: UID 0, Bluetooth (0); Frequency: 2402 MHz; Duty Cycle: 1:1.304
Medium: HSL_2450 Medium parameters used: $f = 2402$ MHz; $\sigma = 1.811$ S/m; $\epsilon_r = 39.093$; $\rho = 1000$ kg/m³
Ambient Temperature : 23.3 °C ; Liquid Temperature : 22.3 °C

DASY5 Configuration:

- Probe: EX3DV4 - SN3857; ConvF(7.5, 7.5, 7.5); Calibrated: 2019.5.27
- Sensor-Surface: 1.4mm (Mechanical Surface Detection)
- Electronics: DAE4 Sn1210; Calibrated: 2019.7.23
- Phantom: SAM1; Type: SAM; Serial: TP-1697
- Measurement SW: DASY52, Version 52.10 (1); SEMCAD X Version 14.6.11 (7439)

Ch0/Area Scan (91x71x1): Interpolated grid: dx=1.200 mm, dy=1.200 mm
Maximum value of SAR (interpolated) = 0.0230 W/kg

Ch0/Zoom Scan (7x7x7)/Cube 0: Measurement grid: dx=5mm, dy=5mm, dz=5mm
Reference Value = 1.690 V/m; Power Drift = 0.01 dB
Peak SAR (extrapolated) = 0.0270 W/kg
SAR(1 g) = 0.013 W/kg; SAR(10 g) = 0.00752 W/kg
Maximum value of SAR (measured) = 0.0205 W/kg



0 dB = 0.0230 W/kg = -16.38 dBW/kg

41_WLAN2.4GHz_802.11b 1Mbps_Front_15mm_Ant1_Ch11

Communication System: UID 0, 802.11b (0); Frequency: 2462 MHz; Duty Cycle: 1:1
Medium: HSL_2450 Medium parameters used: $f = 2462$ MHz; $\sigma = 1.884$ S/m; $\epsilon_r = 38.855$; $\rho = 1000$ kg/m³
Ambient Temperature : 23.3 °C ; Liquid Temperature : 22.3 °C

DASY5 Configuration:

- Probe: EX3DV4 - SN3857; ConvF(7.5, 7.5, 7.5); Calibrated: 2019.5.27
- Sensor-Surface: 1.4mm (Mechanical Surface Detection)
- Electronics: DAE4 Sn1210; Calibrated: 2019.7.23
- Phantom: SAM1; Type: SAM; Serial: TP-1697
- Measurement SW: DASY52, Version 52.10 (1); SEMCAD X Version 14.6.11 (7439)

Ch11/Area Scan (101x71x1): Interpolated grid: dx=1.200 mm, dy=1.200 mm

Maximum value of SAR (interpolated) = 0.110 W/kg

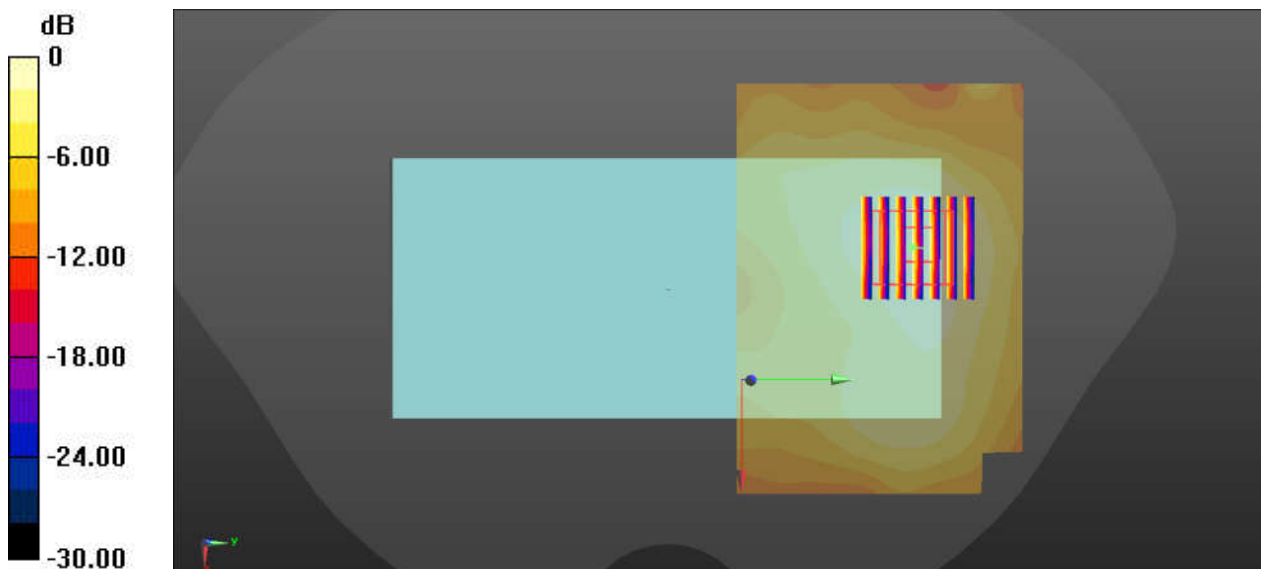
Ch11/Zoom Scan (7x7x7)/Cube 0: Measurement grid: dx=5mm, dy=5mm, dz=5mm

Reference Value = 2.742 V/m; Power Drift = -0.05 dB

Peak SAR (extrapolated) = 0.130 W/kg

SAR(1 g) = 0.075 W/kg; SAR(10 g) = 0.043 W/kg

Maximum value of SAR (measured) = 0.108 W/kg



0 dB = 0.110 W/kg = -9.59 dBW/kg