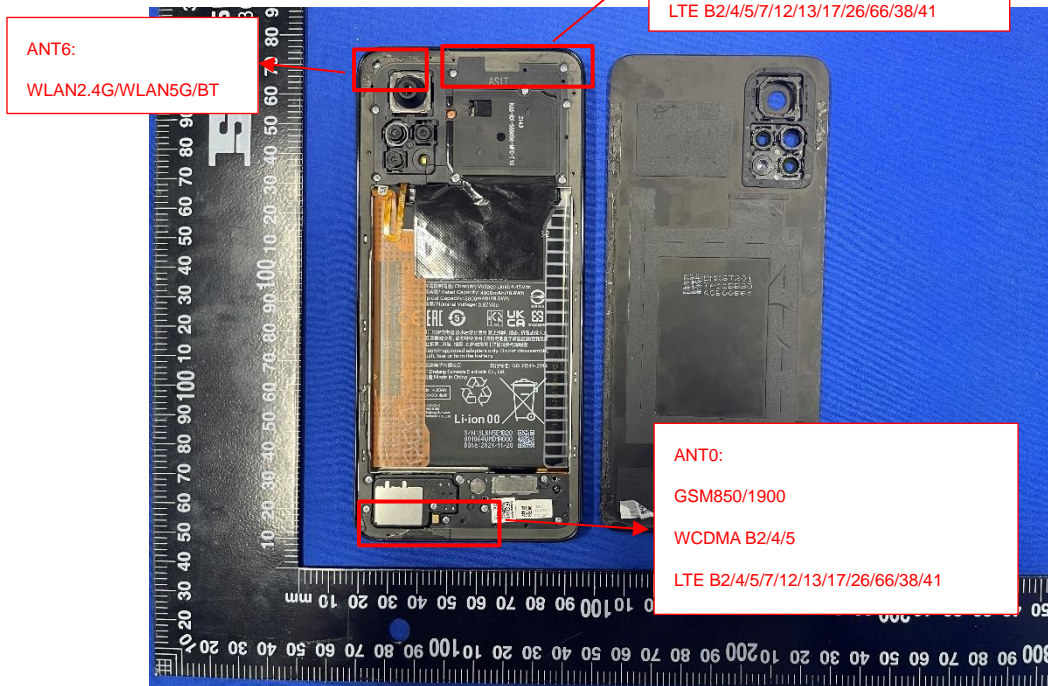
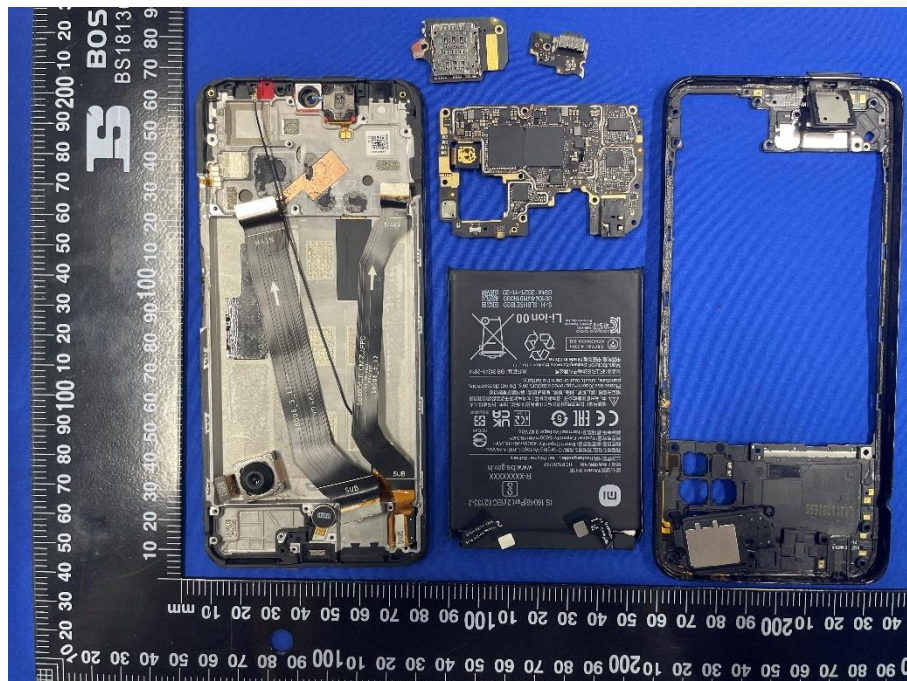


## EUT INTERNAL PHOTOS

### EUT UNCOVER VIEW

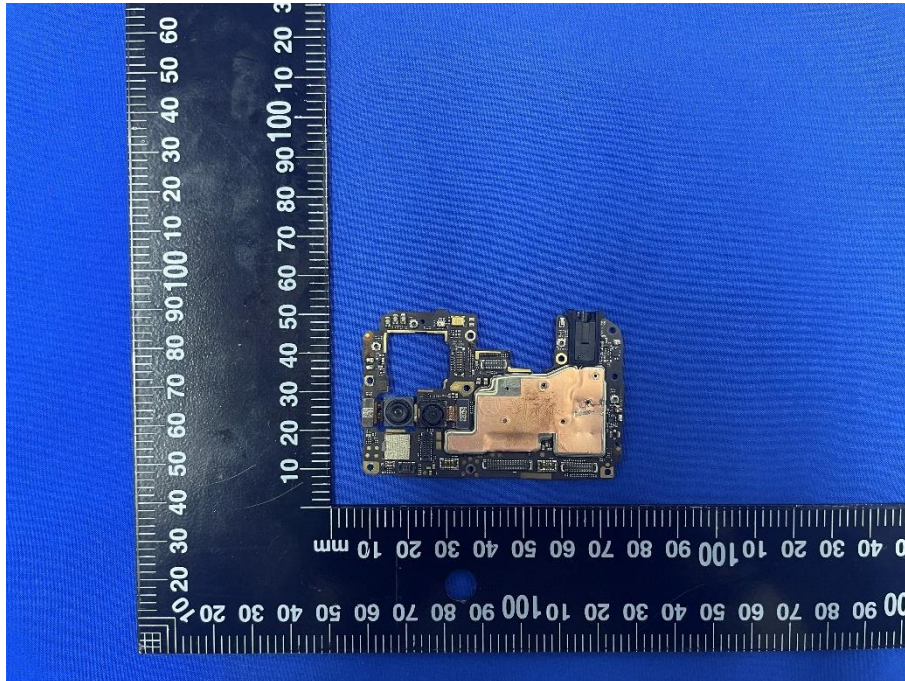


### EUT UNCOVER VIEW

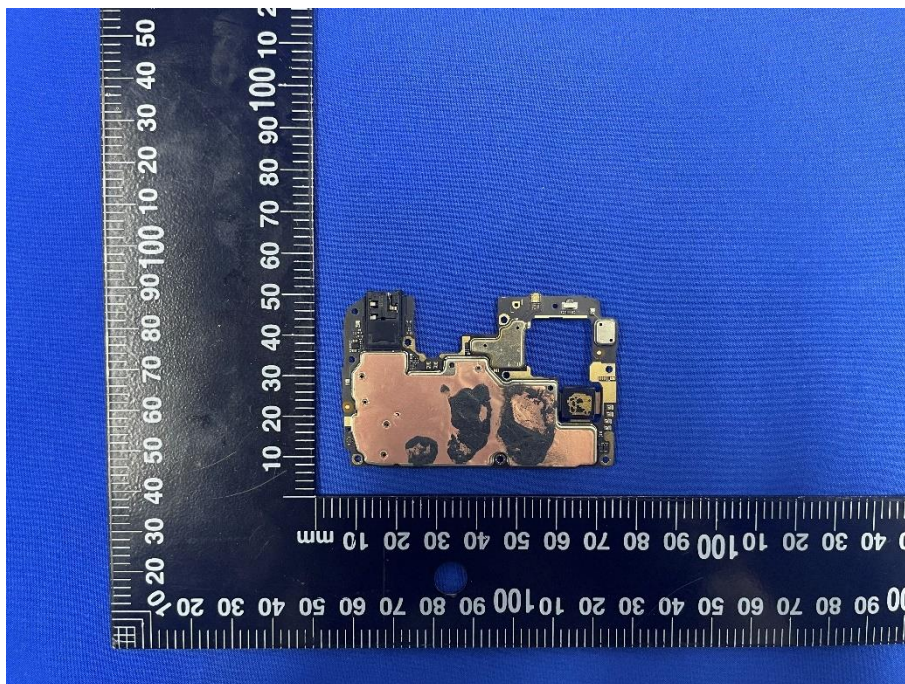




MAIN BOARD TOP VIEW (WITH SHIELDING)

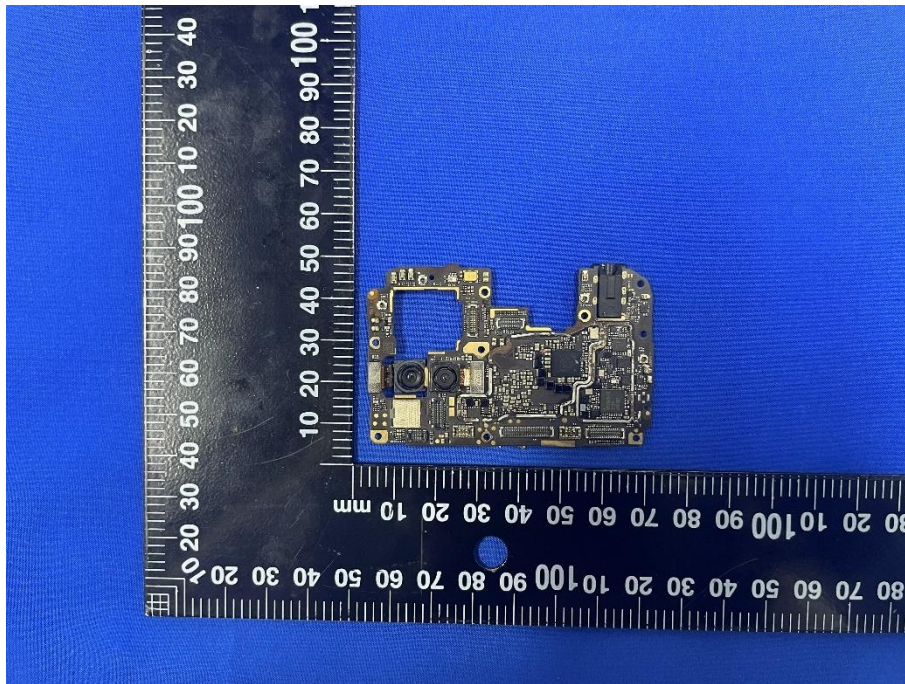


MAIN BOARD REAR VIEW (WITH SHIELDING)

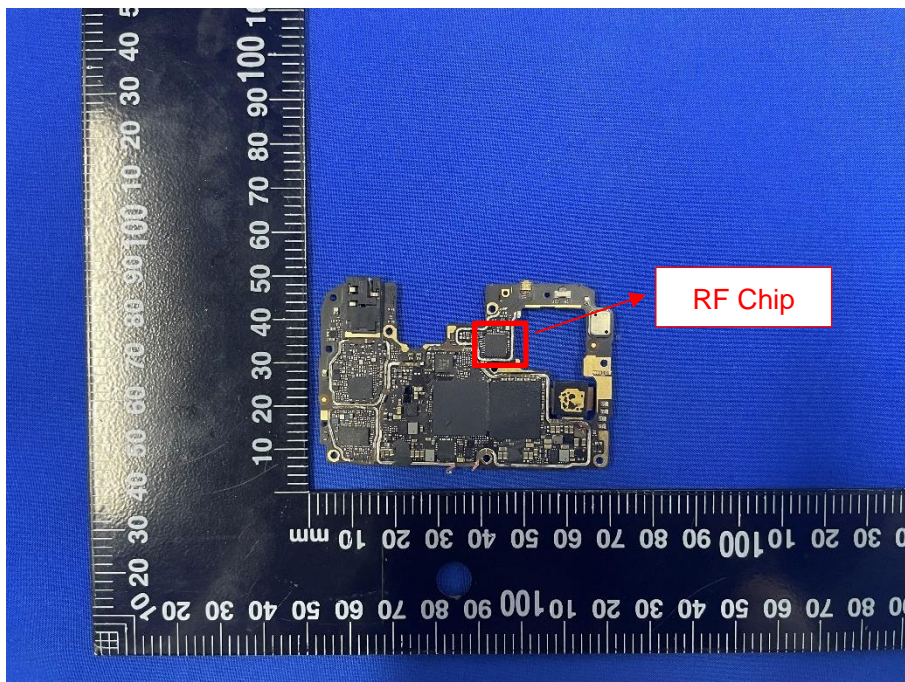




MAIN BOARD TOP VIEW (WITHOUT SHIELDING)

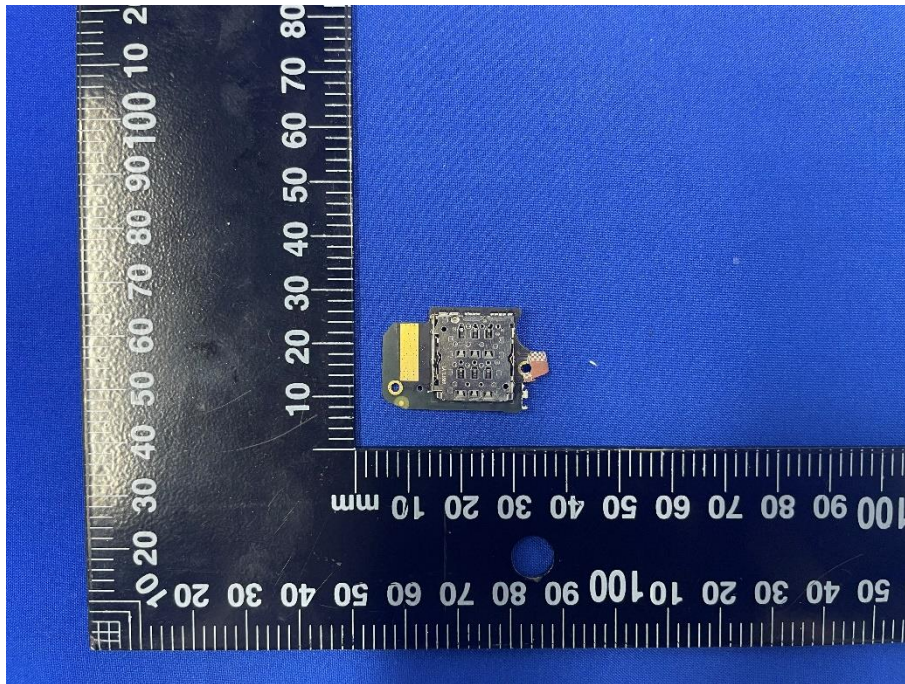


MAIN BOARD REAR VIEW (WITHOUT SHIELDING)

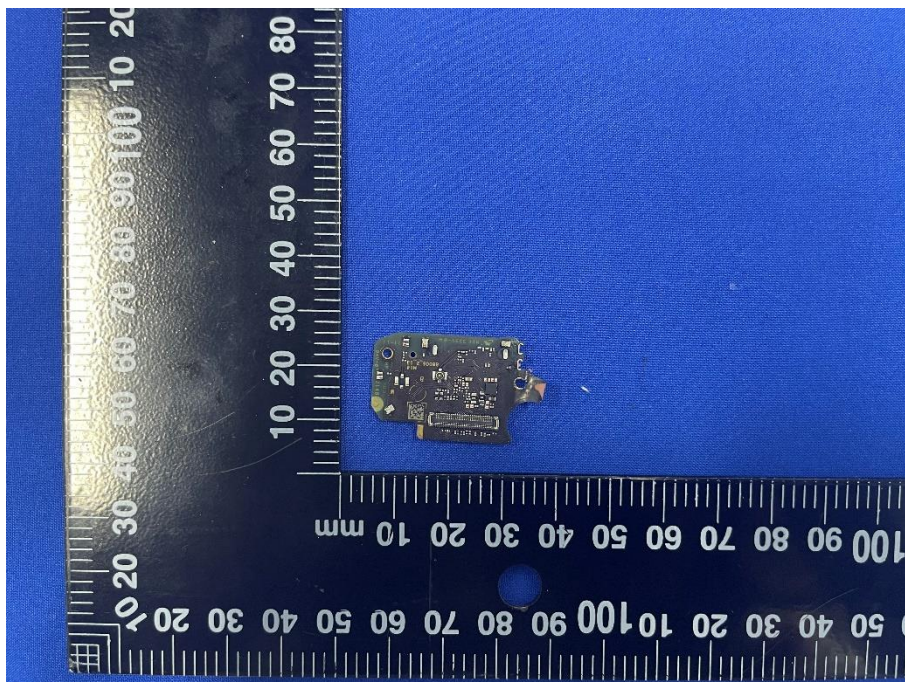




SECONDARY BOARD TOP VIEW 1

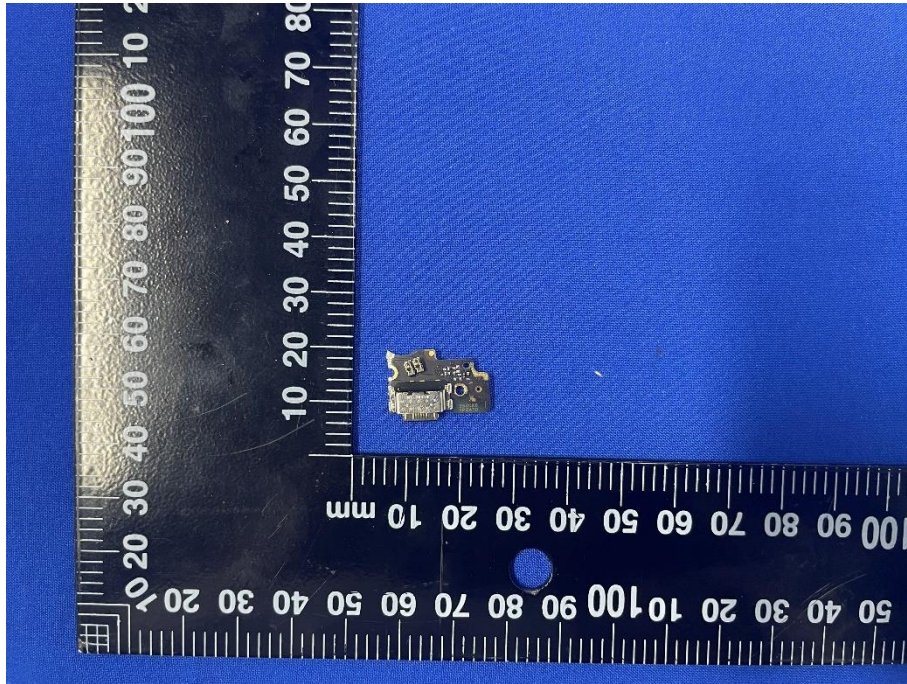


SECONDARY BOARD REAR VIEW 1

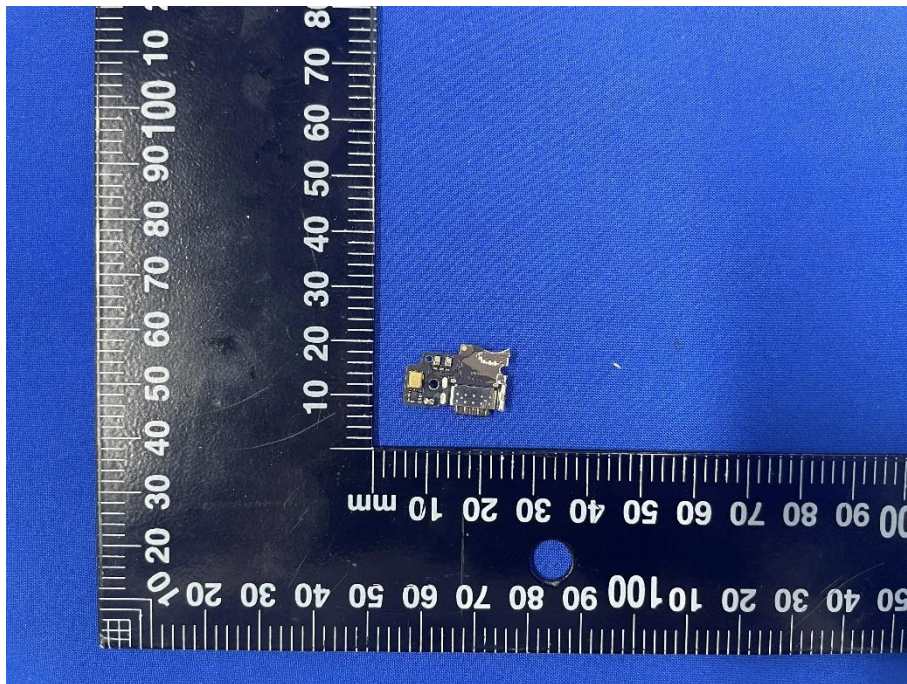




## SECONDARY BOARD TOP VIEW 2



## SECONDARY BOARD REAR VIEW 2





IS 15048 (Part 2) IEC 62133-2

R300000000

www.us.gov.in

Model: 0105

ICPS602

Charging Voltage Limit: 4.45Vdc

Typical Capacity: 3000mAh/30Wh

Terminal Voltage: 3.7Vdc

CE ENEC UK KS

Li-ion 00

S/N: SLR5E1820

0316-2021/11-20

[illegible]



The image shows a black rectangular Li-ion polymer battery, model TIS 2217-2548, placed on a blue surface next to a white ruler. The battery has various labels and markings, including a 'mi' logo, a barcode, and technical specifications. The ruler shows measurements in both centimeters and inches.

Labels on the battery include:

- mi logo
- TIS 2217-2548
- License name (importer name)
- 型号/Model: Node B/NE
- 容量/容量: 1050mAh
- 二次充电电池/Rechargeable Li-ion Polymer Battery
- 充电电压/充电电压限制/Charging Voltage Limit: 4.2Vdc
- 额定容量/额定容量/Rated Capacity: 450mAh@18.50V
- 额定电压/Nominal Voltage: 3.7Vdc
- 额定容量/额定容量/Rated Capacity: 500mAh@18.50V
- 额定电压/额定电压/Nominal Voltage: 3.7Vdc
- CE, ENEC, UK, and other certification marks
- 警告/Warning: 请勿拆解/Do not disassemble, puncture, cut, heat or burn the battery.
- 制造商/Manufacturer: 东莞市新航科技股份有限公司/ Dongguan Xinhang Technology Co., Ltd.
- 执行标准/Execution Standard: GB 31241-2014
- 生产地址/Production Address: 中国东莞/China Dongguan
- IS 10046 (Part 2)
- AEC-Q200
- R-41169137
- www.xh-tech.com
- Li-ion 00
- 5-NI-MH/NE 18 10
- 80 充电/充电/80% CHG
- DATE: 2021/11/10

A black rectangular battery is shown against a blue background. A white label on the battery contains the text "3.8V", "1040 51A", and a QR code. A ruler is placed horizontally below the battery, showing measurements in millimeters (0 to 100) and centimeters (0 to 10). Another ruler is placed vertically to the left of the battery, showing measurements in centimeters (0 to 70).