

System Check_2600MHz

D2600V2-SN:1070

Communication System: D2600; Frequency: 2600.0

Medium: HSL. Medium parameters used: $f= 2600.0$ MHz; $\sigma= 1.94$ S/m; $\epsilon_r = 40.7$

Ambient Temperature: 23.4°C; Liquid Temperature: 22.8°C

DASY6 Configuration:

- Probe: EX3DV4 - SN7576; ConvF(7.59, 7.59, 7.59); Calibrated: 2022/7/28
- Sensor-Surface: 1.4 mm
- Electronics: DAE4 Sn1210; Calibrated: 2022/4/12
- Phantom: Twin-SAM V5.0 (30deg probe tilt); Serial: 1670; Section: Flat
- Measurement Software: cDASY6 V16.0.0.116
- UID: CW, 0--
- MAIA: Area Scan: N/A; Zoom Scan: N/A

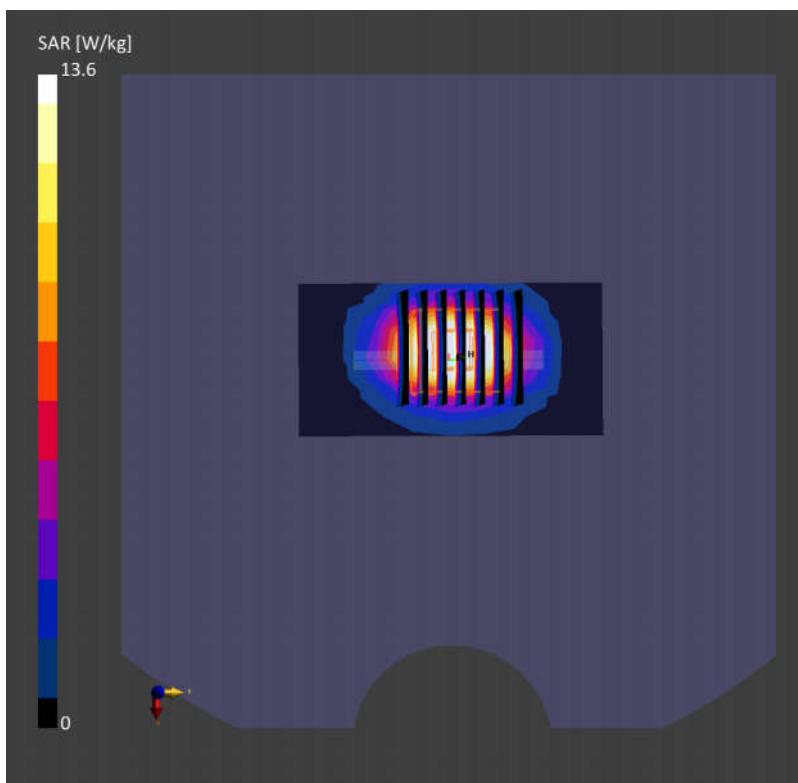
Area Scan (40.0 mm x 80.0 mm): Measurement Grid: 10.0 mm x 10.0 mm

SAR (1g) = 14.0 W/kg; SAR (10g) = 6.37 W/kg;

Zoom Scan (30.0 mm x 30.0 mm x 30.0 mm): Measurement Grid: 5.0 mm x 5.0 mm x 1.5 mm

Power Drift = -0.00 dB

SAR (1g) = 13.6 W/kg; SAR (10g) = 6.19 W/kg;



System Check_3500MHz

D3500V2-SN:1076

Communication System: D3500; Frequency: 3500.0

Medium: HSL. Medium parameters used: $f= 3500.0$ MHz; $\sigma= 2.88$ S/m; $\epsilon_r = 39.3$

Ambient Temperature: 23.6°C; Liquid Temperature: 22.9°C

DASY6 Configuration:

- Probe: EX3DV4 - SN7576; ConvF(6.76, 6.76, 6.76); Calibrated: 2022/7/28
- Sensor-Surface: 1.4 mm
- Electronics: DAE4 Sn1210; Calibrated: 2022/4/12
- Phantom: Twin-SAM V5.0 (30deg probe tilt); Serial: 1670; Section: Flat
- Measurement Software: cDASY6 V16.0.0.116
- UID: CW, 0--
- MAIA: Area Scan: N/A; Zoom Scan: N/A

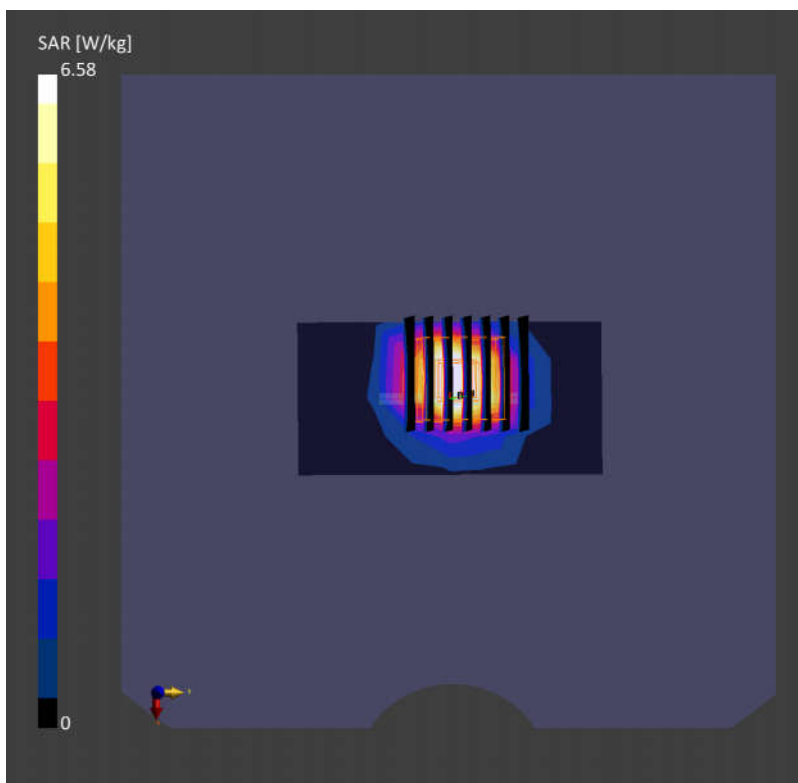
Area Scan (40.0 mm x 80.0 mm): Measurement Grid: 10.0 mm x 10.0 mm

SAR (1g) = 6.11 W/kg; SAR (10g) = 2.46 W/kg;

Zoom Scan (28.0 mm x 28.0 mm x 28.0 mm): Measurement Grid: 5.0 mm x 5.0 mm x 1.4 mm

Power Drift = -0.03 dB

SAR (1g) = 6.58 W/kg; SAR (10g) = 2.46 W/kg;



System Check_3900MHz

D3900V2-SN:1048

Communication System: D3900; Frequency: 3900.0

Medium: HSL. Medium parameters used: $f= 3900.0$ MHz; $\sigma= 3.28$ S/m; $\epsilon_r = 37.4$

Ambient Temperature: 23.7°C; Liquid Temperature: 22.2°C

DASY6 Configuration:

- Probe: EX3DV4 - SN7576; ConvF(6.53, 6.53, 6.53); Calibrated: 2022/7/28
- Sensor-Surface: 1.4 mm
- Electronics: DAE4 Sn1210; Calibrated: 2022/4/12
- Phantom: Twin-SAM V5.0 (30deg probe tilt); Serial: 1670; Section: Flat
- Measurement Software: cDASY6 V16.0.0.116
- UID: CW, 0--
- MAIA: Area Scan: N/A; Zoom Scan: N/A

Area Scan (40.0 mm x 80.0 mm): Measurement Grid: 10.0 mm x 10.0 mm

SAR (1g) = 6.38 W/kg; SAR (10g) = 2.34 W/kg;

Zoom Scan (28.0 mm x 28.0 mm x 28.0 mm): Measurement Grid: 5.0 mm x 5.0 mm x 1.4 mm

Power Drift = 0.00 dB

SAR (1g) = 6.94 W/kg; SAR (10g) = 2.53 W/kg;

