



Report No.: SEWM2209000170RG02

Rev.: 01

Page: 1 of 118

Appendix B.25

NR Band n78(3450-3550)



Unless otherwise agreed in writing, this document is issued by the Company subject to its General Conditions of Service printed overleaf, available on request or accessible at <http://www.sgs.com/en/Terms-and-Conditions.aspx> and, for electronic format documents, subject to Terms and Conditions for Electronic Documents at <http://www.sgs.com/en/Terms-and-Conditions/Terms-e-Documents.aspx>. Attention is drawn to the limitation of liability, indemnification and jurisdiction issues defined therein. Any holder of this document is advised that information contained hereon reflects the Company's findings at the time of its intervention only and within the limits of Client's instructions, if any. The Company's sole responsibility is to its Client and this document does not exonerate parties to a transaction from exercising all their rights and obligations under the transaction documents. This document cannot be reproduced except in full, without prior written approval of the Company. Any unauthorized alteration, forgery or falsification of the content or appearance of this document is unlawful and offenders may be prosecuted to the fullest extent of the law. Unless otherwise stated the results shown in this test report refer only to the sample(s) tested and such sample(s) are retained for 30 days only.
Attention: To check the authenticity of testing/inspection report & certificate, please contact us at telephone: (86-755) 8307 1443, or email: CN.Doccheck@sgs.com

South of No. 6 Plant, No. 1, Runsheng Road, Suzhou Industrial Park, Suzhou Area, China (Jiangsu) Pilot Free Trade Zone 215000
中国·苏州·中国(江苏)自由贸易试验区苏州片区苏州工业园区海胜路1号的6号厂房南楼 邮编: 215000

t (86-512) 62992980 www.sgs.com.cn
t (86-512) 62992980 sgs.china@sgs.com



Effective (Isotropic) Radiated Power Output Data for SA

Test Result

ANT2:

Band	SCS	Bandwidth	Modulation	Channel	RB Config	Power (dBm)	EIRP (dBm)	LIMIT	Verdict
N78-3450-3550	30	20	DFT-PI2BPSK	L	Inner_1RB_Left	25.21	24.51	33	PASS
N78-3450-3550	30	20	DFT-PI2BPSK	L	Inner_1RB_Right	25.14	24.44	33	PASS
N78-3450-3550	30	20	DFT-PI2BPSK	L	Outer_Full	24.86	24.16	33	PASS
N78-3450-3550	30	20	DFT-QPSK	L	Inner_1RB_Left	25.23	24.53	33	PASS
N78-3450-3550	30	20	DFT-QPSK	L	Inner_1RB_Right	25.19	24.49	33	PASS
N78-3450-3550	30	20	DFT-QPSK	L	Outer_Full	19.18	18.48	33	PASS
N78-3450-3550	30	20	DFT-16QAM	L	Inner_1RB_Left	24.37	23.67	33	PASS
N78-3450-3550	30	20	DFT-16QAM	L	Inner_1RB_Right	24.06	23.36	33	PASS
N78-3450-3550	30	20	DFT-16QAM	L	Outer_Full	23.42	22.72	33	PASS
N78-3450-3550	30	20	DFT-64QAM	L	Inner_1RB_Left	23.05	22.35	33	PASS
N78-3450-3550	30	20	DFT-64QAM	L	Inner_1RB_Right	22.94	22.24	33	PASS
N78-3450-3550	30	20	DFT-64QAM	L	Outer_Full	22.93	22.23	33	PASS
N78-3450-3550	30	20	DFT-256QAM	L	Inner_1RB_Left	20.69	19.99	33	PASS
N78-3450-3550	30	20	DFT-256QAM	L	Inner_1RB_Right	20.74	20.04	33	PASS
N78-3450-3550	30	20	DFT-256QAM	L	Outer_Full	20.9	20.2	33	PASS
N78-3450-3550	30	20	DFT-PI2BPSK	M	Inner_1RB_Left	24.96	24.26	33	PASS
N78-3450-3550	30	20	DFT-PI2BPSK	M	Inner_1RB_Right	24.81	24.11	33	PASS
N78-3450-3550	30	20	DFT-PI2BPSK	M	Outer_Full	24.68	23.98	33	PASS
N78-3450-3550	30	20	DFT-QPSK	M	Inner_1RB_Left	24.96	24.26	33	PASS
N78-3450-3550	30	20	DFT-QPSK	M	Inner_1RB_Right	24.86	24.16	33	PASS
N78-3450-3550	30	20	DFT-QPSK	M	Outer_Full	24.22	23.52	33	PASS
N78-3450-3550	30	20	DFT-16QAM	M	Inner_1RB_Left	23.87	23.17	33	PASS
N78-3450-3550	30	20	DFT-16QAM	M	Inner_1RB_Right	23.75	23.05	33	PASS
N78-3450-3550	30	20	DFT-16QAM	M	Outer_Full	23.2	22.5	33	PASS
N78-3450-3550	30	20	DFT-64QAM	M	Inner_1RB_Left	22.78	22.08	33	PASS
N78-3450-3550	30	20	DFT-64QAM	M	Inner_1RB_Right	22.59	21.89	33	PASS
N78-3450-3550	30	20	DFT-64QAM	M	Outer_Full	22.73	22.03	33	PASS



Unless otherwise agreed in writing, this document is issued by the Company subject to its General Conditions of Service printed overleaf, available on request or accessible at <http://www.sgs.com/en/Terms-and-Conditions.aspx> and, for electronic format documents, subject to Terms and Conditions for Electronic Documents at <http://www.sgs.com/en/Terms-and-Conditions/Terms-e-Documents.aspx>. Attention is drawn to the limitation of liability, indemnification and jurisdiction issues defined therein. Any holder of this document is advised that information contained hereon reflects the Company's findings at the time of its intervention only and within the limits of Client's instructions, if any. The Company's sole responsibility is to its Client and this document does not exonerate parties to a transaction from exercising all their rights and obligations under the transaction documents. This document cannot be reproduced except in full, without prior written approval of the Company. Any unauthorized alteration, forgery or falsification of the content or appearance of this document is unlawful and offenders may be prosecuted to the fullest extent of the law. Unless otherwise stated the results shown in this test report refer only to the sample(s) tested and such sample(s) are retained for 30 days only.

Attention: To check the authenticity of testing/inspection report & certificate, please contact us at telephone: (86-755) 8307 1443, or email: CN.Doccheck@sgs.com

South of No. 6 Plant, No. 1, Pansheng Road, Suzhou Industrial Park, Suzhou Area, China (Jiangsu) Pilot Free Trade Zone 215000
 中国·苏州·中国(江苏)自由贸易试验区苏州片区苏州工业园区海胜路1号的6号厂房南楼 邮编: 215000

t (86-512) 62992980 www.sgs.com.cn
 t (86-512) 62992980 sgs.china@sgs.com



Report No.: SEWM2209000170RG02

Rev.: 01

Page: 3 of 118

N78-3450-3550	30	20	DFT-256QAM	M	Inner_1RB_Left	20.37	19.67	33	PASS
N78-3450-3550	30	20	DFT-256QAM	M	Inner_1RB_Right	20.23	19.53	33	PASS
N78-3450-3550	30	20	DFT-256QAM	M	Outer_Full	20.71	20.01	33	PASS
N78-3450-3550	30	20	DFT-PI2BPSK	H	Inner_1RB_Left	24.95	24.25	33	PASS
N78-3450-3550	30	20	DFT-PI2BPSK	H	Inner_1RB_Right	24.77	24.07	33	PASS
N78-3450-3550	30	20	DFT-PI2BPSK	H	Outer_Full	24.48	23.78	33	PASS
N78-3450-3550	30	20	DFT-QPSK	H	Inner_1RB_Left	24.96	24.26	33	PASS
N78-3450-3550	30	20	DFT-QPSK	H	Inner_1RB_Right	24.8	24.1	33	PASS
N78-3450-3550	30	20	DFT-QPSK	H	Outer_Full	24.02	23.32	33	PASS
N78-3450-3550	30	20	DFT-16QAM	H	Inner_1RB_Left	23.89	23.19	33	PASS
N78-3450-3550	30	20	DFT-16QAM	H	Inner_1RB_Right	23.68	22.98	33	PASS
N78-3450-3550	30	20	DFT-16QAM	H	Outer_Full	23.02	22.32	33	PASS
N78-3450-3550	30	20	DFT-64QAM	H	Inner_1RB_Left	21.36	20.66	33	PASS
N78-3450-3550	30	20	DFT-64QAM	H	Inner_1RB_Right	22.55	21.85	33	PASS
N78-3450-3550	30	20	DFT-64QAM	H	Outer_Full	22.54	21.84	33	PASS
N78-3450-3550	30	20	DFT-256QAM	H	Inner_1RB_Left	20.25	19.55	33	PASS
N78-3450-3550	30	20	DFT-256QAM	H	Inner_1RB_Right	20.3	19.6	33	PASS
N78-3450-3550	30	20	DFT-256QAM	H	Outer_Full	20.53	19.83	33	PASS
N78-3450-3550	30	30	DFT-PI2BPSK	L	Inner_1RB_Left	25.06	24.36	33	PASS
N78-3450-3550	30	30	DFT-PI2BPSK	L	Inner_1RB_Right	24.63	23.93	33	PASS
N78-3450-3550	30	30	DFT-PI2BPSK	L	Outer_Full	24.71	24.01	33	PASS
N78-3450-3550	30	30	DFT-QPSK	L	Inner_1RB_Left	25.08	24.38	33	PASS
N78-3450-3550	30	30	DFT-QPSK	L	Inner_1RB_Right	24.65	23.95	33	PASS
N78-3450-3550	30	30	DFT-QPSK	L	Outer_Full	24.24	23.54	33	PASS
N78-3450-3550	30	30	DFT-16QAM	L	Inner_1RB_Left	24.15	23.45	33	PASS
N78-3450-3550	30	30	DFT-16QAM	L	Inner_1RB_Right	23.57	22.87	33	PASS
N78-3450-3550	30	30	DFT-16QAM	L	Outer_Full	23.26	22.56	33	PASS
N78-3450-3550	30	30	DFT-64QAM	L	Inner_1RB_Left	22.86	22.16	33	PASS
N78-3450-3550	30	30	DFT-64QAM	L	Inner_1RB_Right	22.44	21.74	33	PASS
N78-3450-3550	30	30	DFT-64QAM	L	Outer_Full	22.81	22.11	33	PASS
N78-3450-3550	30	30	DFT-256QAM	L	Inner_1RB_Left	20.51	19.81	33	PASS
N78-3450-3550	30	30	DFT-256QAM	L	Inner_1RB_Right	20.23	19.53	33	PASS
N78-3450-3550	30	30	DFT-256QAM	L	Outer_Full	20.81	20.11	33	PASS
N78-3450-3550	30	30	DFT-PI2BPSK	M	Inner_1RB_Left	24.66	23.96	33	PASS
N78-3450-3550	30	30	DFT-PI2BPSK	M	Inner_1RB_Right	24.58	23.88	33	PASS



Unless otherwise agreed in writing, this document is issued by the Company subject to its General Conditions of Service printed overleaf, available on request or accessible at <http://www.sgs.com/en/Terms-and-Conditions.aspx> and, for electronic format documents, subject to Terms and Conditions for Electronic Documents at <http://www.sgs.com/en/Terms-and-Conditions/Terms-e-Documents.aspx>. Attention is drawn to the limitation of liability, indemnification and jurisdiction issues defined therein. Any holder of this document is advised that information contained hereon reflects the Company's findings at the time of its intervention only and within the limits of Client's instructions, if any. The Company's sole responsibility is to its Client and this document does not exonerate parties to a transaction from exercising all their rights and obligations under the transaction documents. This document cannot be reproduced except in full, without prior written approval of the Company. Any unauthorized alteration, forgery or falsification of the content or appearance of this document is unlawful and offenders may be prosecuted to the fullest extent of the law. Unless otherwise stated the results shown in this test report refer only to the sample(s) tested and such sample(s) are retained for 30 days only.

Attention: To check the authenticity of testing/inspection report & certificate, please contact us at telephone: (86-755) 8307 1443, or email: CN.Doccheck@sgs.com

South of No. 6 Plant, No. 1, Pansheng Road, Suzhou Industrial Park, Suzhou Area, China (Jiangsu) Pilot Free Trade Zone 215000
 中国·苏州·中国(江苏)自由贸易试验区苏州片区苏州工业园区海胜路1号的6号厂房南楼 邮编: 215000

t (86-512) 62992980 www.sgs.com.cn
 t (86-512) 62992980 sgs.china@sgs.com



N78-3450-3550	30	30	DFT-PI2BPSK	M	Outer_Full	24.55	23.85	33	PASS
N78-3450-3550	30	30	DFT-QPSK	M	Inner_1RB_Left	24.69	23.99	33	PASS
N78-3450-3550	30	30	DFT-QPSK	M	Inner_1RB_Right	24.62	23.92	33	PASS
N78-3450-3550	30	30	DFT-QPSK	M	Outer_Full	24.07	23.37	33	PASS
N78-3450-3550	30	30	DFT-16QAM	M	Inner_1RB_Left	23.75	23.05	33	PASS
N78-3450-3550	30	30	DFT-16QAM	M	Inner_1RB_Right	23.67	22.97	33	PASS
N78-3450-3550	30	30	DFT-16QAM	M	Outer_Full	23.09	22.39	33	PASS
N78-3450-3550	30	30	DFT-64QAM	M	Inner_1RB_Left	22.48	21.78	33	PASS
N78-3450-3550	30	30	DFT-64QAM	M	Inner_1RB_Right	22.36	21.66	33	PASS
N78-3450-3550	30	30	DFT-64QAM	M	Outer_Full	22.62	21.92	33	PASS
N78-3450-3550	30	30	DFT-256QAM	M	Inner_1RB_Left	20.24	19.54	33	PASS
N78-3450-3550	30	30	DFT-256QAM	M	Inner_1RB_Right	20	19.3	33	PASS
N78-3450-3550	30	30	DFT-256QAM	M	Outer_Full	20.6	19.9	33	PASS
N78-3450-3550	30	30	DFT-PI2BPSK	H	Inner_1RB_Left	24.62	23.92	33	PASS
N78-3450-3550	30	30	DFT-PI2BPSK	H	Inner_1RB_Right	24.48	23.78	33	PASS
N78-3450-3550	30	30	DFT-PI2BPSK	H	Outer_Full	24.39	23.69	33	PASS
N78-3450-3550	30	30	DFT-QPSK	H	Inner_1RB_Left	24.69	23.99	33	PASS
N78-3450-3550	30	30	DFT-QPSK	H	Inner_1RB_Right	24.55	23.85	33	PASS
N78-3450-3550	30	30	DFT-QPSK	H	Outer_Full	23.92	23.22	33	PASS
N78-3450-3550	30	30	DFT-16QAM	H	Inner_1RB_Left	23.72	23.02	33	PASS
N78-3450-3550	30	30	DFT-16QAM	H	Inner_1RB_Right	23.44	22.74	33	PASS
N78-3450-3550	30	30	DFT-16QAM	H	Outer_Full	22.91	22.21	33	PASS
N78-3450-3550	30	30	DFT-64QAM	H	Inner_1RB_Left	22.43	21.73	33	PASS
N78-3450-3550	30	30	DFT-64QAM	H	Inner_1RB_Right	22.32	21.62	33	PASS
N78-3450-3550	30	30	DFT-64QAM	H	Outer_Full	22.44	21.74	33	PASS
N78-3450-3550	30	30	DFT-256QAM	H	Inner_1RB_Left	20.21	19.51	33	PASS
N78-3450-3550	30	30	DFT-256QAM	H	Inner_1RB_Right	20.06	19.36	33	PASS
N78-3450-3550	30	30	DFT-256QAM	H	Outer_Full	20.42	19.72	33	PASS
N78-3450-3550	30	40	DFT-PI2BPSK	L	Inner_1RB_Left	24.87	24.17	33	PASS
N78-3450-3550	30	40	DFT-PI2BPSK	L	Inner_1RB_Right	24.42	23.72	33	PASS
N78-3450-3550	30	40	DFT-PI2BPSK	L	Outer_Full	24.61	23.91	33	PASS
N78-3450-3550	30	40	DFT-QPSK	L	Inner_1RB_Left	24.92	24.22	33	PASS
N78-3450-3550	30	40	DFT-QPSK	L	Inner_1RB_Right	24.44	23.74	33	PASS
N78-3450-3550	30	40	DFT-QPSK	L	Outer_Full	24.12	23.42	33	PASS
N78-3450-3550	30	40	DFT-16QAM	L	Inner_1RB_Left	23.82	23.12	33	PASS



Unless otherwise agreed in writing, this document is issued by the Company subject to its General Conditions of Service printed overleaf, available on request or accessible at <http://www.sgs.com/en/Terms-and-Conditions.aspx> and, for electronic format documents, subject to Terms and Conditions for Electronic Documents at <http://www.sgs.com/en/Terms-and-Conditions/Terms-e-Documents.aspx>. Attention is drawn to the limitation of liability, indemnification and jurisdiction issues defined therein. Any holder of this document is advised that information contained hereon reflects the Company's findings at the time of its intervention only and within the limits of Client's instructions, if any. The Company's sole responsibility is to its Client and this document does not exonerate parties to a transaction from exercising all their rights and obligations under the transaction documents. This document cannot be reproduced except in full, without prior written approval of the Company. Any unauthorized alteration, forgery or falsification of the content or appearance of this document is unlawful and offenders may be prosecuted to the fullest extent of the law. Unless otherwise stated the results shown in this test report refer only to the sample(s) tested and such sample(s) are retained for 30 days only.

Attention: To check the authenticity of testing/inspection report & certificate, please contact us at telephone: (86-755) 8307 1443, or email: CN.Doccheck@sgs.com

South of No. 6 Plant, No. 1, Pansheng Road, Suzhou Industrial Park, Suzhou Area, China (Jiangsu) Pilot Free Trade Zone 215000 t (86-512) 62992980 www.sgs.com.cn
 中国·苏州·中国(江苏)自由贸易试验区苏州片区苏州工业园区海胜路1号的6号厂房南座 邮编: 215000 t (86-512) 62992980 sgs.china@sgs.com



Report No.: SEWM2209000170RG02

Rev.: 01

Page: 5 of 118

N78-3450-3550	30	40	DFT-16QAM	L	Inner_1RB_Right	23.53	22.83	33	PASS
N78-3450-3550	30	40	DFT-16QAM	L	Outer_Full	23.15	22.45	33	PASS
N78-3450-3550	30	40	DFT-64QAM	L	Inner_1RB_Left	22.71	22.01	33	PASS
N78-3450-3550	30	40	DFT-64QAM	L	Inner_1RB_Right	22.24	21.54	33	PASS
N78-3450-3550	30	40	DFT-64QAM	L	Outer_Full	22.66	21.96	33	PASS
N78-3450-3550	30	40	DFT-256QAM	L	Inner_1RB_Left	20.5	19.8	33	PASS
N78-3450-3550	30	40	DFT-256QAM	L	Inner_1RB_Right	19.84	19.14	33	PASS
N78-3450-3550	30	40	DFT-256QAM	L	Outer_Full	18.56	17.86	33	PASS
N78-3450-3550	30	40	DFT-PI2BPSK	M	Inner_1RB_Left	24.48	23.78	33	PASS
N78-3450-3550	30	40	DFT-PI2BPSK	M	Inner_1RB_Right	24.35	23.65	33	PASS
N78-3450-3550	30	40	DFT-PI2BPSK	M	Outer_Full	24.46	23.76	33	PASS
N78-3450-3550	30	40	DFT-QPSK	M	Inner_1RB_Left	24.49	23.79	33	PASS
N78-3450-3550	30	40	DFT-QPSK	M	Inner_1RB_Right	24.38	23.68	33	PASS
N78-3450-3550	30	40	DFT-QPSK	M	Outer_Full	23.54	22.84	33	PASS
N78-3450-3550	30	40	DFT-16QAM	M	Inner_1RB_Left	23.42	22.72	33	PASS
N78-3450-3550	30	40	DFT-16QAM	M	Inner_1RB_Right	23.49	22.79	33	PASS
N78-3450-3550	30	40	DFT-16QAM	M	Outer_Full	22.97	22.27	33	PASS
N78-3450-3550	30	40	DFT-64QAM	M	Inner_1RB_Left	22.3	21.6	33	PASS
N78-3450-3550	30	40	DFT-64QAM	M	Inner_1RB_Right	22.18	21.48	33	PASS
N78-3450-3550	30	40	DFT-64QAM	M	Outer_Full	22.49	21.79	33	PASS
N78-3450-3550	30	40	DFT-256QAM	M	Inner_1RB_Left	20.08	19.38	33	PASS
N78-3450-3550	30	40	DFT-256QAM	M	Inner_1RB_Right	19.83	19.13	33	PASS
N78-3450-3550	30	40	DFT-256QAM	M	Outer_Full	20.51	19.81	33	PASS
N78-3450-3550	30	40	DFT-PI2BPSK	H	Inner_1RB_Left	24.34	23.64	33	PASS
N78-3450-3550	30	40	DFT-PI2BPSK	H	Inner_1RB_Right	24.24	23.54	33	PASS
N78-3450-3550	30	40	DFT-PI2BPSK	H	Outer_Full	24.3	23.6	33	PASS
N78-3450-3550	30	40	DFT-QPSK	H	Inner_1RB_Left	24.36	23.66	33	PASS
N78-3450-3550	30	40	DFT-QPSK	H	Inner_1RB_Right	24.28	23.58	33	PASS
N78-3450-3550	30	40	DFT-QPSK	H	Outer_Full	21.6	20.9	33	PASS
N78-3450-3550	30	40	DFT-16QAM	H	Inner_1RB_Left	23.46	22.76	33	PASS
N78-3450-3550	30	40	DFT-16QAM	H	Inner_1RB_Right	23.38	22.68	33	PASS
N78-3450-3550	30	40	DFT-16QAM	H	Outer_Full	22.79	22.09	33	PASS
N78-3450-3550	30	40	DFT-64QAM	H	Inner_1RB_Left	22.2	21.5	33	PASS
N78-3450-3550	30	40	DFT-64QAM	H	Inner_1RB_Right	22.11	21.41	33	PASS
N78-3450-3550	30	40	DFT-64QAM	H	Outer_Full	22.32	21.62	33	PASS



Unless otherwise agreed in writing, this document is issued by the Company subject to its General Conditions of Service printed overleaf, available on request or accessible at <http://www.sgs.com/en/Terms-and-Conditions.aspx> and, for electronic format documents, subject to Terms and Conditions for Electronic Documents at <http://www.sgs.com/en/Terms-and-Conditions/Terms-e-Documents.aspx>. Attention is drawn to the limitation of liability, indemnification and jurisdiction issues defined therein. Any holder of this document is advised that information contained hereon reflects the Company's findings at the time of its intervention only and within the limits of Client's instructions, if any. The Company's sole responsibility is to its Client and this document does not exonerate parties to a transaction from exercising all their rights and obligations under the transaction documents. This document cannot be reproduced except in full, without prior written approval of the Company. Any unauthorized alteration, forgery or falsification of the content or appearance of this document is unlawful and offenders may be prosecuted to the fullest extent of the law. Unless otherwise stated the results shown in this test report refer only to the sample(s) tested and such sample(s) are retained for 30 days only.

Attention: To check the authenticity of testing/inspection report & certificate, please contact us at telephone: (86-755) 8307 1443, or email: CN.Doccheck@sgs.com

South of No. 6 Plant, No. 1, Pansheng Road, Suzhou Industrial Park, Suzhou Area, China (Jiangsu) Pilot Free Trade Zone 215000
 中国·苏州·中国(江苏)自由贸易试验区苏州片区苏州工业园区润胜路1号的6号厂房南楼 邮编: 215000

t (86-512) 62992980 www.sgs.com.cn
 t (86-512) 62992980 sgs.china@sgs.com



Report No.: SEWM2209000170RG02

Rev.: 01

Page: 6 of 118

N78-3450-3550	30	40	DFT-256QAM	H	Inner_1RB_Left	19.83	19.13	33	PASS
N78-3450-3550	30	40	DFT-256QAM	H	Inner_1RB_Right	19.7	19	33	PASS
N78-3450-3550	30	40	DFT-256QAM	H	Outer_Full	20.32	19.62	33	PASS
N78-3450-3550	30	50	DFT-PI2BPSK	L	Inner_1RB_Left	25.18	24.48	33	PASS
N78-3450-3550	30	50	DFT-PI2BPSK	L	Inner_1RB_Right	24.83	24.13	33	PASS
N78-3450-3550	30	50	DFT-PI2BPSK	L	Outer_Full	24.69	23.99	33	PASS
N78-3450-3550	30	50	DFT-QPSK	L	Inner_1RB_Left	25.23	24.53	33	PASS
N78-3450-3550	30	50	DFT-QPSK	L	Inner_1RB_Right	24.93	24.23	33	PASS
N78-3450-3550	30	50	DFT-QPSK	L	Outer_Full	24.24	23.54	33	PASS
N78-3450-3550	30	50	DFT-16QAM	L	Inner_1RB_Left	24.3	23.6	33	PASS
N78-3450-3550	30	50	DFT-16QAM	L	Inner_1RB_Right	23.96	23.26	33	PASS
N78-3450-3550	30	50	DFT-16QAM	L	Outer_Full	23.26	22.56	33	PASS
N78-3450-3550	30	50	DFT-64QAM	L	Inner_1RB_Left	22.99	22.29	33	PASS
N78-3450-3550	30	50	DFT-64QAM	L	Inner_1RB_Right	22.73	22.03	33	PASS
N78-3450-3550	30	50	DFT-64QAM	L	Outer_Full	22.78	22.08	33	PASS
N78-3450-3550	30	50	DFT-256QAM	L	Inner_1RB_Left	20.77	20.07	33	PASS
N78-3450-3550	30	50	DFT-256QAM	L	Inner_1RB_Right	20.45	19.75	33	PASS
N78-3450-3550	30	50	DFT-256QAM	L	Outer_Full	20.75	20.05	33	PASS
N78-3450-3550	30	50	DFT-PI2BPSK	M	Inner_1RB_Left	24.86	24.16	33	PASS
N78-3450-3550	30	50	DFT-PI2BPSK	M	Inner_1RB_Right	24.7	24	33	PASS
N78-3450-3550	30	50	DFT-PI2BPSK	M	Outer_Full	24.51	23.81	33	PASS
N78-3450-3550	30	50	DFT-QPSK	M	Inner_1RB_Left	24.86	24.16	33	PASS
N78-3450-3550	30	50	DFT-QPSK	M	Inner_1RB_Right	24.73	24.03	33	PASS
N78-3450-3550	30	50	DFT-QPSK	M	Outer_Full	24.04	23.34	33	PASS
N78-3450-3550	30	50	DFT-16QAM	M	Inner_1RB_Left	24.12	23.42	33	PASS
N78-3450-3550	30	50	DFT-16QAM	M	Inner_1RB_Right	23.82	23.12	33	PASS
N78-3450-3550	30	50	DFT-16QAM	M	Outer_Full	23.1	22.4	33	PASS
N78-3450-3550	30	50	DFT-64QAM	M	Inner_1RB_Left	22.59	21.89	33	PASS
N78-3450-3550	30	50	DFT-64QAM	M	Inner_1RB_Right	22.49	21.79	33	PASS
N78-3450-3550	30	50	DFT-64QAM	M	Outer_Full	22.6	21.9	33	PASS
N78-3450-3550	30	50	DFT-256QAM	M	Inner_1RB_Left	20.59	19.89	33	PASS
N78-3450-3550	30	50	DFT-256QAM	M	Inner_1RB_Right	20.43	19.73	33	PASS
N78-3450-3550	30	50	DFT-256QAM	M	Outer_Full	20.57	19.87	33	PASS
N78-3450-3550	30	50	DFT-PI2BPSK	H	Inner_1RB_Left	24.85	24.15	33	PASS
N78-3450-3550	30	50	DFT-PI2BPSK	H	Inner_1RB_Right	24.49	23.79	33	PASS



Unless otherwise agreed in writing, this document is issued by the Company subject to its General Conditions of Service printed overleaf, available on request or accessible at <http://www.sgs.com/en/Terms-and-Conditions.aspx> and, for electronic format documents, subject to Terms and Conditions for Electronic Documents at <http://www.sgs.com/en/Terms-and-Conditions/Terms-e-Documents.aspx>. Attention is drawn to the limitation of liability, indemnification and jurisdiction issues defined therein. Any holder of this document is advised that information contained hereon reflects the Company's findings at the time of its intervention only and within the limits of Client's instructions, if any. The Company's sole responsibility is to its Client and this document does not exonerate parties to a transaction from exercising all their rights and obligations under the transaction documents. This document cannot be reproduced except in full, without prior written approval of the Company. Any unauthorized alteration, forgery or falsification of the content or appearance of this document is unlawful and offenders may be prosecuted to the fullest extent of the law. Unless otherwise stated the results shown in this test report refer only to the sample(s) tested and such sample(s) are retained for 30 days only.

Attention: To check the authenticity of testing/inspection report & certificate, please contact us at telephone: (86-755) 8307 1443, or email: CN.Doccheck@sgs.com

South of No. 6 Plant, No. 1, Pansheng Road, Suzhou Industrial Park, Suzhou Area, China (Jiangsu) Pilot Free Trade Zone 215000 t (86-512) 62992980 www.sgs.com.cn
 中国·苏州·中国(江苏)自由贸易试验区苏州片区苏州工业园区润胜路1号的6号厂房南座 邮编: 215000 t (86-512) 62992980 sgs.china@sgs.com



N78-3450-3550	30	50	DFT-PI2BPSK	H	Outer_Full	24.36	23.66	33	PASS
N78-3450-3550	30	50	DFT-QPSK	H	Inner_1RB_Left	24.87	24.17	33	PASS
N78-3450-3550	30	50	DFT-QPSK	H	Inner_1RB_Right	24.55	23.85	33	PASS
N78-3450-3550	30	50	DFT-QPSK	H	Outer_Full	23.91	23.21	33	PASS
N78-3450-3550	30	50	DFT-16QAM	H	Inner_1RB_Left	24.12	23.42	33	PASS
N78-3450-3550	30	50	DFT-16QAM	H	Inner_1RB_Right	23.62	22.92	33	PASS
N78-3450-3550	30	50	DFT-16QAM	H	Outer_Full	22.93	22.23	33	PASS
N78-3450-3550	30	50	DFT-64QAM	H	Inner_1RB_Left	22.6	21.9	33	PASS
N78-3450-3550	30	50	DFT-64QAM	H	Inner_1RB_Right	22.26	21.56	33	PASS
N78-3450-3550	30	50	DFT-64QAM	H	Outer_Full	22.43	21.73	33	PASS
N78-3450-3550	30	50	DFT-256QAM	H	Inner_1RB_Left	20.41	19.71	33	PASS
N78-3450-3550	30	50	DFT-256QAM	H	Inner_1RB_Right	19.94	19.24	33	PASS
N78-3450-3550	30	50	DFT-256QAM	H	Outer_Full	20.4	19.7	33	PASS
N78-3450-3550	30	60	DFT-PI2BPSK	L	Inner_1RB_Left	25.19	24.49	33	PASS
N78-3450-3550	30	60	DFT-PI2BPSK	L	Inner_1RB_Right	24.66	23.96	33	PASS
N78-3450-3550	30	60	DFT-PI2BPSK	L	Outer_Full	24.76	24.06	33	PASS
N78-3450-3550	30	60	DFT-QPSK	L	Inner_1RB_Left	25.26	24.56	33	PASS
N78-3450-3550	30	60	DFT-QPSK	L	Inner_1RB_Right	24.69	23.99	33	PASS
N78-3450-3550	30	60	DFT-QPSK	L	Outer_Full	24.29	23.59	33	PASS
N78-3450-3550	30	60	DFT-16QAM	L	Inner_1RB_Left	24.16	23.46	33	PASS
N78-3450-3550	30	60	DFT-16QAM	L	Inner_1RB_Right	23.58	22.88	33	PASS
N78-3450-3550	30	60	DFT-16QAM	L	Outer_Full	23.32	22.62	33	PASS
N78-3450-3550	30	60	DFT-64QAM	L	Inner_1RB_Left	23.07	22.37	33	PASS
N78-3450-3550	30	60	DFT-64QAM	L	Inner_1RB_Right	22.44	21.74	33	PASS
N78-3450-3550	30	60	DFT-64QAM	L	Outer_Full	22.78	22.08	33	PASS
N78-3450-3550	30	60	DFT-256QAM	L	Inner_1RB_Left	20.83	20.13	33	PASS
N78-3450-3550	30	60	DFT-256QAM	L	Inner_1RB_Right	20.2	19.5	33	PASS
N78-3450-3550	30	60	DFT-256QAM	L	Outer_Full	20.81	20.11	33	PASS
N78-3450-3550	30	60	DFT-PI2BPSK	M	Inner_1RB_Left	24.95	24.25	33	PASS
N78-3450-3550	30	60	DFT-PI2BPSK	M	Inner_1RB_Right	24.67	23.97	33	PASS
N78-3450-3550	30	60	DFT-PI2BPSK	M	Outer_Full	24.5	23.8	33	PASS
N78-3450-3550	30	60	DFT-QPSK	M	Inner_1RB_Left	24.97	24.27	33	PASS
N78-3450-3550	30	60	DFT-QPSK	M	Inner_1RB_Right	24.65	23.95	33	PASS
N78-3450-3550	30	60	DFT-QPSK	M	Outer_Full	23.06	22.36	33	PASS
N78-3450-3550	30	60	DFT-16QAM	M	Inner_1RB_Left	23.89	23.19	33	PASS



Unless otherwise agreed in writing, this document is issued by the Company subject to its General Conditions of Service printed overleaf, available on request or accessible at <http://www.sgs.com/en/Terms-and-Conditions.aspx> and, for electronic format documents, subject to Terms and Conditions for Electronic Documents at <http://www.sgs.com/en/Terms-and-Conditions/Terms-e-Documents.aspx>. Attention is drawn to the limitation of liability, indemnification and jurisdiction issues defined therein. Any holder of this document is advised that information contained hereon reflects the Company's findings at the time of its intervention only and within the limits of Client's instructions, if any. The Company's sole responsibility is to its Client and this document does not exonerate parties to a transaction from exercising all their rights and obligations under the transaction documents. This document cannot be reproduced except in full, without prior written approval of the Company. Any unauthorized alteration, forgery or falsification of the content or appearance of this document is unlawful and offenders may be prosecuted to the fullest extent of the law. Unless otherwise stated the results shown in this test report refer only to the sample(s) tested and such sample(s) are retained for 30 days only.

Attention: To check the authenticity of testing/inspection report & certificate, please contact us at telephone: (86-755) 8307 1443, or email: CN.Doccheck@sgs.com

South of No. 6 Plant, No. 1, Pansheng Road, Suzhou Industrial Park, Suzhou Area, China (Jiangsu) Pilot Free Trade Zone 215000 t (86-512) 62992980 www.sgs.com.cn
 中国·苏州·中国(江苏)自由贸易试验区苏州片区苏州工业园区海胜路1号的6号厂房南楼 邮编: 215000 t (86-512) 62992980 sgs.china@sgs.com



Report No.: SEWM2209000170RG02

Rev.: 01

Page: 8 of 118

N78-3450-3550	30	60	DFT-16QAM	M	Inner_1RB_Right	23.71	23.01	33	PASS
N78-3450-3550	30	60	DFT-16QAM	M	Outer_Full	23.06	22.36	33	PASS
N78-3450-3550	30	60	DFT-64QAM	M	Inner_1RB_Left	20.36	19.66	33	PASS
N78-3450-3550	30	60	DFT-64QAM	M	Inner_1RB_Right	22.41	21.71	33	PASS
N78-3450-3550	30	60	DFT-64QAM	M	Outer_Full	22.52	21.82	33	PASS
N78-3450-3550	30	60	DFT-256QAM	M	Inner_1RB_Left	19.63	18.93	33	PASS
N78-3450-3550	30	60	DFT-256QAM	M	Inner_1RB_Right	20.12	19.42	33	PASS
N78-3450-3550	30	60	DFT-256QAM	M	Outer_Full	20.54	19.84	33	PASS
N78-3450-3550	30	60	DFT-PI2BPSK	H	Inner_1RB_Left	24.79	24.09	33	PASS
N78-3450-3550	30	60	DFT-PI2BPSK	H	Inner_1RB_Right	24.5	23.8	33	PASS
N78-3450-3550	30	60	DFT-PI2BPSK	H	Outer_Full	24.47	23.77	33	PASS
N78-3450-3550	30	60	DFT-QPSK	H	Inner_1RB_Left	24.8	24.1	33	PASS
N78-3450-3550	30	60	DFT-QPSK	H	Inner_1RB_Right	24.5	23.8	33	PASS
N78-3450-3550	30	60	DFT-QPSK	H	Outer_Full	24.01	23.31	33	PASS
N78-3450-3550	30	60	DFT-16QAM	H	Inner_1RB_Left	23.88	23.18	33	PASS
N78-3450-3550	30	60	DFT-16QAM	H	Inner_1RB_Right	23.41	22.71	33	PASS
N78-3450-3550	30	60	DFT-16QAM	H	Outer_Full	23	22.3	33	PASS
N78-3450-3550	30	60	DFT-64QAM	H	Inner_1RB_Left	22.58	21.88	33	PASS
N78-3450-3550	30	60	DFT-64QAM	H	Inner_1RB_Right	22.32	21.62	33	PASS
N78-3450-3550	30	60	DFT-64QAM	H	Outer_Full	22.49	21.79	33	PASS
N78-3450-3550	30	60	DFT-256QAM	H	Inner_1RB_Left	20.21	19.51	33	PASS
N78-3450-3550	30	60	DFT-256QAM	H	Inner_1RB_Right	20.02	19.32	33	PASS
N78-3450-3550	30	60	DFT-256QAM	H	Outer_Full	20.5	19.8	33	PASS
N78-3450-3550	30	80	DFT-PI2BPSK	L	Inner_1RB_Left	25.02	24.32	33	PASS
N78-3450-3550	30	80	DFT-PI2BPSK	L	Inner_1RB_Right	24.56	23.86	33	PASS
N78-3450-3550	30	80	DFT-PI2BPSK	L	Outer_Full	24.62	23.92	33	PASS
N78-3450-3550	30	80	DFT-QPSK	L	Inner_1RB_Left	25.15	24.45	33	PASS
N78-3450-3550	30	80	DFT-QPSK	L	Inner_1RB_Right	24.64	23.94	33	PASS
N78-3450-3550	30	80	DFT-QPSK	L	Outer_Full	23.21	22.51	33	PASS
N78-3450-3550	30	80	DFT-16QAM	L	Inner_1RB_Left	23.87	23.17	33	PASS
N78-3450-3550	30	80	DFT-16QAM	L	Inner_1RB_Right	23.58	22.88	33	PASS
N78-3450-3550	30	80	DFT-16QAM	L	Outer_Full	23.21	22.51	33	PASS
N78-3450-3550	30	80	DFT-64QAM	L	Inner_1RB_Left	22.8	22.1	33	PASS
N78-3450-3550	30	80	DFT-64QAM	L	Inner_1RB_Right	22.32	21.62	33	PASS
N78-3450-3550	30	80	DFT-64QAM	L	Outer_Full	22.7	22	33	PASS



Unless otherwise agreed in writing, this document is issued by the Company subject to its General Conditions of Service printed overleaf, available on request or accessible at <http://www.sgs.com/en/Terms-and-Conditions.aspx> and, for electronic format documents, subject to Terms and Conditions for Electronic Documents at <http://www.sgs.com/en/Terms-and-Conditions/Terms-e-Documents.aspx>. Attention is drawn to the limitation of liability, indemnification and jurisdiction issues defined therein. Any holder of this document is advised that information contained hereon reflects the Company's findings at the time of its intervention only and within the limits of Client's instructions, if any. The Company's sole responsibility is to its Client and this document does not exonerate parties to a transaction from exercising all their rights and obligations under the transaction documents. This document cannot be reproduced except in full, without prior written approval of the Company. Any unauthorized alteration, forgery or falsification of the content or appearance of this document is unlawful and offenders may be prosecuted to the fullest extent of the law. Unless otherwise stated the results shown in this test report refer only to the sample(s) tested and such sample(s) are retained for 30 days only.

Attention: To check the authenticity of testing/inspection report & certificate, please contact us at telephone: (86-755) 8307 1443, or email: CN.Doccheck@sgs.com

South of No. 6 Plant, No. 1, Pansheng Road, Suzhou Industrial Park, Suzhou Area, China (Jiangsu) Pilot Free Trade Zone 215000
 中国·苏州·中国(江苏)自由贸易试验区苏州片区苏州工业园区海胜路1号的6号厂房南楼 邮编: 215000

t (86-512) 62992980 www.sgs.com.cn
 t (86-512) 62992980 sgs.china@sgs.com



Report No.: SEWM2209000170RG02

Rev.: 01

Page: 9 of 118

N78-3450-3550	30	80	DFT-256QAM	L	Inner_1RB_Left	20.48	19.78	33	PASS
N78-3450-3550	30	80	DFT-256QAM	L	Inner_1RB_Right	20.06	19.36	33	PASS
N78-3450-3550	30	80	DFT-256QAM	L	Outer_Full	20.68	19.98	33	PASS
N78-3450-3550	30	80	DFT-PI2BPSK	M	Inner_1RB_Left	24.84	24.14	33	PASS
N78-3450-3550	30	80	DFT-PI2BPSK	M	Inner_1RB_Right	24.28	23.58	33	PASS
N78-3450-3550	30	80	DFT-PI2BPSK	M	Outer_Full	24.52	23.82	33	PASS
N78-3450-3550	30	80	DFT-QPSK	M	Inner_1RB_Left	24.94	24.24	33	PASS
N78-3450-3550	30	80	DFT-QPSK	M	Inner_1RB_Right	24.4	23.7	33	PASS
N78-3450-3550	30	80	DFT-QPSK	M	Outer_Full	18.81	18.11	33	PASS
N78-3450-3550	30	80	DFT-16QAM	M	Inner_1RB_Left	23.88	23.18	33	PASS
N78-3450-3550	30	80	DFT-16QAM	M	Inner_1RB_Right	23.16	22.46	33	PASS
N78-3450-3550	30	80	DFT-16QAM	M	Outer_Full	23.09	22.39	33	PASS
N78-3450-3550	30	80	DFT-64QAM	M	Inner_1RB_Left	22.67	21.97	33	PASS
N78-3450-3550	30	80	DFT-64QAM	M	Inner_1RB_Right	22.06	21.36	33	PASS
N78-3450-3550	30	80	DFT-64QAM	M	Outer_Full	22.58	21.88	33	PASS
N78-3450-3550	30	80	DFT-256QAM	M	Inner_1RB_Left	20.32	19.62	33	PASS
N78-3450-3550	30	80	DFT-256QAM	M	Inner_1RB_Right	19.75	19.05	33	PASS
N78-3450-3550	30	80	DFT-256QAM	M	Outer_Full	20.57	19.87	33	PASS
N78-3450-3550	30	80	DFT-PI2BPSK	H	Inner_1RB_Left	24.71	24.01	33	PASS
N78-3450-3550	30	80	DFT-PI2BPSK	H	Inner_1RB_Right	24.28	23.58	33	PASS
N78-3450-3550	30	80	DFT-PI2BPSK	H	Outer_Full	24.45	23.75	33	PASS
N78-3450-3550	30	80	DFT-QPSK	H	Inner_1RB_Left	24.87	24.17	33	PASS
N78-3450-3550	30	80	DFT-QPSK	H	Inner_1RB_Right	24.36	23.66	33	PASS
N78-3450-3550	30	80	DFT-QPSK	H	Outer_Full	23.51	22.81	33	PASS
N78-3450-3550	30	80	DFT-16QAM	H	Inner_1RB_Left	23.6	22.9	33	PASS
N78-3450-3550	30	80	DFT-16QAM	H	Inner_1RB_Right	23.16	22.46	33	PASS
N78-3450-3550	30	80	DFT-16QAM	H	Outer_Full	23	22.3	33	PASS
N78-3450-3550	30	80	DFT-64QAM	H	Inner_1RB_Left	22.51	21.81	33	PASS
N78-3450-3550	30	80	DFT-64QAM	H	Inner_1RB_Right	22.1	21.4	33	PASS
N78-3450-3550	30	80	DFT-64QAM	H	Outer_Full	22.5	21.8	33	PASS
N78-3450-3550	30	80	DFT-256QAM	H	Inner_1RB_Left	20.15	19.45	33	PASS
N78-3450-3550	30	80	DFT-256QAM	H	Inner_1RB_Right	19.66	18.96	33	PASS
N78-3450-3550	30	80	DFT-256QAM	H	Outer_Full	20.49	19.79	33	PASS
N78-3450-3550	30	90	DFT-PI2BPSK	L	Inner_1RB_Left	24.8	24.1	33	PASS
N78-3450-3550	30	90	DFT-PI2BPSK	L	Inner_1RB_Right	24.14	23.44	33	PASS



Unless otherwise agreed in writing, this document is issued by the Company subject to its General Conditions of Service printed overleaf, available on request or accessible at <http://www.sgs.com/en/Terms-and-Conditions.aspx> and, for electronic format documents, subject to Terms and Conditions for Electronic Documents at <http://www.sgs.com/en/Terms-and-Conditions/Terms-e-Documents.aspx>. Attention is drawn to the limitation of liability, indemnification and jurisdiction issues defined therein. Any holder of this document is advised that information contained hereon reflects the Company's findings at the time of its intervention only and within the limits of Client's instructions, if any. The Company's sole responsibility is to its Client and this document does not exonerate parties to a transaction from exercising all their rights and obligations under the transaction documents. This document cannot be reproduced except in full, without prior written approval of the Company. Any unauthorized alteration, forgery or falsification of the content or appearance of this document is unlawful and offenders may be prosecuted to the fullest extent of the law. Unless otherwise stated the results shown in this test report refer only to the sample(s) tested and such sample(s) are retained for 30 days only.

Attention: To check the authenticity of testing/inspection report & certificate, please contact us at telephone: (86-755) 8307 1443, or email: CN.Doccheck@sgs.com

South of No. 6 Plant, No. 1, Pansheng Road, Suzhou Industrial Park, Suzhou Area, China (Jiangsu) Pilot Free Trade Zone 215000
 中国·苏州·中国(江苏)自由贸易试验区苏州片区苏州工业园区海胜路1号的6号厂房南座 邮编: 215000

t (86-512) 62992980 www.sgs.com.cn
 t (86-512) 62992980 sgs.china@sgs.com



Report No.: SEWM2209000170RG02

Rev.: 01

Page: 10 of 118

N78-3450-3550	30	90	DFT-PI2BPSK	L	Outer_Full	24.6	23.9	33	PASS
N78-3450-3550	30	90	DFT-QPSK	L	Inner_1RB_Left	24.87	24.17	33	PASS
N78-3450-3550	30	90	DFT-QPSK	L	Inner_1RB_Right	24.2	23.5	33	PASS
N78-3450-3550	30	90	DFT-QPSK	L	Outer_Full	23.17	22.47	33	PASS
N78-3450-3550	30	90	DFT-16QAM	L	Inner_1RB_Left	23.76	23.06	33	PASS
N78-3450-3550	30	90	DFT-16QAM	L	Inner_1RB_Right	23.3	22.6	33	PASS
N78-3450-3550	30	90	DFT-16QAM	L	Outer_Full	23.12	22.42	33	PASS
N78-3450-3550	30	90	DFT-64QAM	L	Inner_1RB_Left	22.68	21.98	33	PASS
N78-3450-3550	30	90	DFT-64QAM	L	Inner_1RB_Right	21.97	21.27	33	PASS
N78-3450-3550	30	90	DFT-64QAM	L	Outer_Full	22.65	21.95	33	PASS
N78-3450-3550	30	90	DFT-256QAM	L	Inner_1RB_Left	20.29	19.59	33	PASS
N78-3450-3550	30	90	DFT-256QAM	L	Inner_1RB_Right	19.59	18.89	33	PASS
N78-3450-3550	30	90	DFT-256QAM	L	Outer_Full	20.67	19.97	33	PASS
N78-3450-3550	30	90	DFT-PI2BPSK	M	Inner_1RB_Left	24.73	24.03	33	PASS
N78-3450-3550	30	90	DFT-PI2BPSK	M	Inner_1RB_Right	24.08	23.38	33	PASS
N78-3450-3550	30	90	DFT-PI2BPSK	M	Outer_Full	24.5	23.8	33	PASS
N78-3450-3550	30	90	DFT-QPSK	M	Inner_1RB_Left	24.76	24.06	33	PASS
N78-3450-3550	30	90	DFT-QPSK	M	Inner_1RB_Right	24.1	23.4	33	PASS
N78-3450-3550	30	90	DFT-QPSK	M	Outer_Full	24.04	23.34	33	PASS
N78-3450-3550	30	90	DFT-16QAM	M	Inner_1RB_Left	23.68	22.98	33	PASS
N78-3450-3550	30	90	DFT-16QAM	M	Inner_1RB_Right	23.18	22.48	33	PASS
N78-3450-3550	30	90	DFT-16QAM	M	Outer_Full	23.03	22.33	33	PASS
N78-3450-3550	30	90	DFT-64QAM	M	Inner_1RB_Left	22.53	21.83	33	PASS
N78-3450-3550	30	90	DFT-64QAM	M	Inner_1RB_Right	21.9	21.2	33	PASS
N78-3450-3550	30	90	DFT-64QAM	M	Outer_Full	22.54	21.84	33	PASS
N78-3450-3550	30	90	DFT-256QAM	M	Inner_1RB_Left	20.28	19.58	33	PASS
N78-3450-3550	30	90	DFT-256QAM	M	Inner_1RB_Right	19.41	18.71	33	PASS
N78-3450-3550	30	90	DFT-256QAM	M	Outer_Full	20.55	19.85	33	PASS
N78-3450-3550	30	90	DFT-PI2BPSK	H	Inner_1RB_Left	24.72	24.02	33	PASS
N78-3450-3550	30	90	DFT-PI2BPSK	H	Inner_1RB_Right	24.13	23.43	33	PASS
N78-3450-3550	30	90	DFT-PI2BPSK	H	Outer_Full	24.49	23.79	33	PASS
N78-3450-3550	30	90	DFT-QPSK	H	Inner_1RB_Left	24.76	24.06	33	PASS
N78-3450-3550	30	90	DFT-QPSK	H	Inner_1RB_Right	24.14	23.44	33	PASS
N78-3450-3550	30	90	DFT-QPSK	H	Outer_Full	24.01	23.31	33	PASS
N78-3450-3550	30	90	DFT-16QAM	H	Inner_1RB_Left	23.78	23.08	33	PASS



Unless otherwise agreed in writing, this document is issued by the Company subject to its General Conditions of Service printed overleaf, available on request or accessible at <http://www.sgs.com/en/Terms-and-Conditions.aspx> and, for electronic format documents, subject to Terms and Conditions for Electronic Documents at <http://www.sgs.com/en/Terms-and-Conditions/Terms-e-Documents.aspx>. Attention is drawn to the limitation of liability, indemnification and jurisdiction issues defined therein. Any holder of this document is advised that information contained hereon reflects the Company's findings at the time of its intervention only and within the limits of Client's instructions, if any. The Company's sole responsibility is to its Client and this document does not exonerate parties to a transaction from exercising all their rights and obligations under the transaction documents. This document cannot be reproduced except in full, without prior written approval of the Company. Any unauthorized alteration, forgery or falsification of the content or appearance of this document is unlawful and offenders may be prosecuted to the fullest extent of the law. Unless otherwise stated the results shown in this test report refer only to the sample(s) tested and such sample(s) are retained for 30 days only.

Attention: To check the authenticity of testing/inspection report & certificate, please contact us at telephone: (86-755) 8307 1443, or email: CN.Doccheck@sgs.com

South of No. 6 Plant, No. 1, Pansheng Road, Suzhou Industrial Park, Suzhou Area, China (Jiangsu) Pilot Free Trade Zone 215000
 中国·苏州·中国(江苏)自由贸易试验区苏州片区苏州工业园区海胜路1号的6号厂房南楼 邮编: 215000

t (86-512) 62992980 www.sgs.com.cn
 t (86-512) 62992980 sgs.china@sgs.com



N78-3450-3550	30	90	DFT-16QAM	H	Inner_1RB_Right	23.24	22.54	33	PASS
N78-3450-3550	30	90	DFT-16QAM	H	Outer_Full	23.01	22.31	33	PASS
N78-3450-3550	30	90	DFT-64QAM	H	Inner_1RB_Left	22.58	21.88	33	PASS
N78-3450-3550	30	90	DFT-64QAM	H	Inner_1RB_Right	21.95	21.25	33	PASS
N78-3450-3550	30	90	DFT-64QAM	H	Outer_Full	22.53	21.83	33	PASS
N78-3450-3550	30	90	DFT-256QAM	H	Inner_1RB_Left	20.15	19.45	33	PASS
N78-3450-3550	30	90	DFT-256QAM	H	Inner_1RB_Right	19.51	18.81	33	PASS
N78-3450-3550	30	90	DFT-256QAM	H	Outer_Full	20.51	19.81	33	PASS
N78-3450-3550	30	100	DFT-PI2BPSK	L	Inner_1RB_Left	24.61	23.91	33	PASS
N78-3450-3550	30	100	DFT-PI2BPSK	L	Inner_1RB_Right	23.95	23.25	33	PASS
N78-3450-3550	30	100	DFT-PI2BPSK	L	Outer_Full	24.44	23.74	33	PASS
N78-3450-3550	30	100	DFT-QPSK	L	Inner_1RB_Left	24.63	23.93	33	PASS
N78-3450-3550	30	100	DFT-QPSK	L	Inner_1RB_Right	23.96	23.26	33	PASS
N78-3450-3550	30	100	DFT-QPSK	L	Outer_Full	23.97	23.27	33	PASS
N78-3450-3550	30	100	DFT-16QAM	L	Inner_1RB_Left	23.66	22.96	33	PASS
N78-3450-3550	30	100	DFT-16QAM	L	Inner_1RB_Right	22.97	22.27	33	PASS
N78-3450-3550	30	100	DFT-16QAM	L	Outer_Full	23	22.3	33	PASS
N78-3450-3550	30	100	DFT-64QAM	L	Inner_1RB_Left	20.36	19.66	33	PASS
N78-3450-3550	30	100	DFT-64QAM	L	Inner_1RB_Right	21.74	21.04	33	PASS
N78-3450-3550	30	100	DFT-64QAM	L	Outer_Full	22.47	21.77	33	PASS
N78-3450-3550	30	100	DFT-256QAM	L	Inner_1RB_Left	19.58	18.88	33	PASS
N78-3450-3550	30	100	DFT-256QAM	L	Inner_1RB_Right	19.38	18.68	33	PASS
N78-3450-3550	30	100	DFT-256QAM	L	Outer_Full	20.47	19.77	33	PASS
N78-3450-3550	30	100	DFT-PI2BPSK	M	Inner_1RB_Left	24.61	23.91	33	PASS
N78-3450-3550	30	100	DFT-PI2BPSK	M	Inner_1RB_Right	23.94	23.24	33	PASS
N78-3450-3550	30	100	DFT-PI2BPSK	M	Outer_Full	23.98	23.28	33	PASS
N78-3450-3550	30	100	DFT-QPSK	M	Inner_1RB_Left	24.62	23.92	33	PASS
N78-3450-3550	30	100	DFT-QPSK	M	Inner_1RB_Right	23.96	23.26	33	PASS
N78-3450-3550	30	100	DFT-QPSK	M	Outer_Full	23.97	23.27	33	PASS
N78-3450-3550	30	100	DFT-16QAM	M	Inner_1RB_Left	23.14	22.44	33	PASS
N78-3450-3550	30	100	DFT-16QAM	M	Inner_1RB_Right	22.92	22.22	33	PASS
N78-3450-3550	30	100	DFT-16QAM	M	Outer_Full	22.98	22.28	33	PASS
N78-3450-3550	30	100	DFT-64QAM	M	Inner_1RB_Left	22.43	21.73	33	PASS
N78-3450-3550	30	100	DFT-64QAM	M	Inner_1RB_Right	21.77	21.07	33	PASS
N78-3450-3550	30	100	DFT-64QAM	M	Outer_Full	22.46	21.76	33	PASS



Unless otherwise agreed in writing, this document is issued by the Company subject to its General Conditions of Service printed overleaf, available on request or accessible at <http://www.sgs.com/en/Terms-and-Conditions.aspx> and, for electronic format documents, subject to Terms and Conditions for Electronic Documents at <http://www.sgs.com/en/Terms-and-Conditions/Terms-e-Documents.aspx>. Attention is drawn to the limitation of liability, indemnification and jurisdiction issues defined therein. Any holder of this document is advised that information contained hereon reflects the Company's findings at the time of its intervention only and within the limits of Client's instructions, if any. The Company's sole responsibility is to its Client and this document does not exonerate parties to a transaction from exercising all their rights and obligations under the transaction documents. This document cannot be reproduced except in full, without prior written approval of the Company. Any unauthorized alteration, forgery or falsification of the content or appearance of this document is unlawful and offenders may be prosecuted to the fullest extent of the law. Unless otherwise stated the results shown in this test report refer only to the sample(s) tested and such sample(s) are retained for 30 days only.

Attention: To check the authenticity of testing/inspection report & certificate, please contact us at telephone: (86-755) 8307 1443, or email: CN.Doccheck@sgs.com

South of No. 6 Plant, No. 1, Pansheng Road, Suzhou Industrial Park, Suzhou Area, China (Jiangsu) Pilot Free Trade Zone 215000
 中国·苏州·中国(江苏)自由贸易试验区苏州片区苏州工业园区海胜路1号的6号厂房南楼 邮编: 215000

t (86-512) 62992980 www.sgs.com.cn
 t (86-512) 62992980 sgs.china@sgs.com



Report No.: SEWM2209000170RG02

Rev.: 01

Page: 12 of 118

N78-3450-3550	30	100	DFT-256QAM	M	Inner_1RB_Left	20.03	19.33	33	PASS
N78-3450-3550	30	100	DFT-256QAM	M	Inner_1RB_Right	19.32	18.62	33	PASS
N78-3450-3550	30	100	DFT-256QAM	M	Outer_Full	20.47	19.77	33	PASS
N78-3450-3550	30	100	DFT-PI2BPSK	H	Inner_1RB_Left	24.61	23.91	33	PASS
N78-3450-3550	30	100	DFT-PI2BPSK	H	Inner_1RB_Right	23.95	23.25	33	PASS
N78-3450-3550	30	100	DFT-PI2BPSK	H	Outer_Full	24.44	23.74	33	PASS
N78-3450-3550	30	100	DFT-QPSK	H	Inner_1RB_Left	24.65	23.95	33	PASS
N78-3450-3550	30	100	DFT-QPSK	H	Inner_1RB_Right	23.95	23.25	33	PASS
N78-3450-3550	30	100	DFT-QPSK	H	Outer_Full	23.99	23.29	33	PASS
N78-3450-3550	30	100	DFT-16QAM	H	Inner_1RB_Left	23.65	22.95	33	PASS
N78-3450-3550	30	100	DFT-16QAM	H	Inner_1RB_Right	22.94	22.24	33	PASS
N78-3450-3550	30	100	DFT-16QAM	H	Outer_Full	23	22.3	33	PASS
N78-3450-3550	30	100	DFT-64QAM	H	Inner_1RB_Left	22.42	21.72	33	PASS
N78-3450-3550	30	100	DFT-64QAM	H	Inner_1RB_Right	21.72	21.02	33	PASS
N78-3450-3550	30	100	DFT-64QAM	H	Outer_Full	22.48	21.78	33	PASS
N78-3450-3550	30	100	DFT-256QAM	H	Inner_1RB_Left	20.12	19.42	33	PASS
N78-3450-3550	30	100	DFT-256QAM	H	Inner_1RB_Right	19.29	18.59	33	PASS
N78-3450-3550	30	100	DFT-256QAM	H	Outer_Full	20.47	19.77	33	PASS



Unless otherwise agreed in writing, this document is issued by the Company subject to its General Conditions of Service printed overleaf, available on request or accessible at <http://www.sgs.com/en/Terms-and-Conditions.aspx> and, for electronic format documents, subject to Terms and Conditions for Electronic Documents at <http://www.sgs.com/en/Terms-and-Conditions/Terms-e-Documents.aspx>. Attention is drawn to the limitation of liability, indemnification and jurisdiction issues defined therein. Any holder of this document is advised that information contained hereon reflects the Company's findings at the time of its intervention only and within the limits of Client's instructions, if any. The Company's sole responsibility is to its Client and this document does not exonerate parties to a transaction from exercising all their rights and obligations under the transaction documents. This document cannot be reproduced except in full, without prior written approval of the Company. Any unauthorized alteration, forgery or falsification of the content or appearance of this document is unlawful and offenders may be prosecuted to the fullest extent of the law. Unless otherwise stated the results shown in this test report refer only to the sample(s) tested and such sample(s) are retained for 30 days only.
Attention: To check the authenticity of testing/inspection report & certificate, please contact us at telephone: (86-755) 8307 1443, or email: CN.Doccheck@sgs.com
 South of No. 6 Plant, No. 1, Runsheng Road, Suzhou Industrial Park, Suzhou Area, China (Jiangsu) Pilot Free Trade Zone 215000 t (86-512) 62992980 www.sgs.com.cn
 中国·苏州·中国(江苏)自由贸易试验区苏州片区苏州工业园区润胜路1号的6号厂房南楼 邮编: 215000 t (86-512) 62992980 sgs.china@sgs.com



Report No.: SEWM2209000170RG02

Rev.: 01

Page: 13 of 118

Peak-to-Average Ratio for SA

Test Result

Band	SCS	Bandwidth	Modulation	Channel	RB Config	DutyCycle	Factor	Result	Limit	Verdict
N78-3450-3550	30	100	DFT-256QAM	L	Outer_Full	100%	0.00	9.47	≤13	PASS
N78-3450-3550	30	100	CP-256QAM	L	Outer_Full	100%	0.00	9.49	≤13	PASS
N78-3450-3550	30	100	DFT-256QAM	M	Outer_Full	100%	0.00	9.24	≤13	PASS
N78-3450-3550	30	100	CP-256QAM	M	Outer_Full	100%	0.00	9.31	≤13	PASS
N78-3450-3550	30	100	DFT-256QAM	H	Outer_Full	100%	0.00	9.26	≤13	PASS
N78-3450-3550	30	100	CP-256QAM	H	Outer_Full	100%	0.00	9.55	≤13	PASS



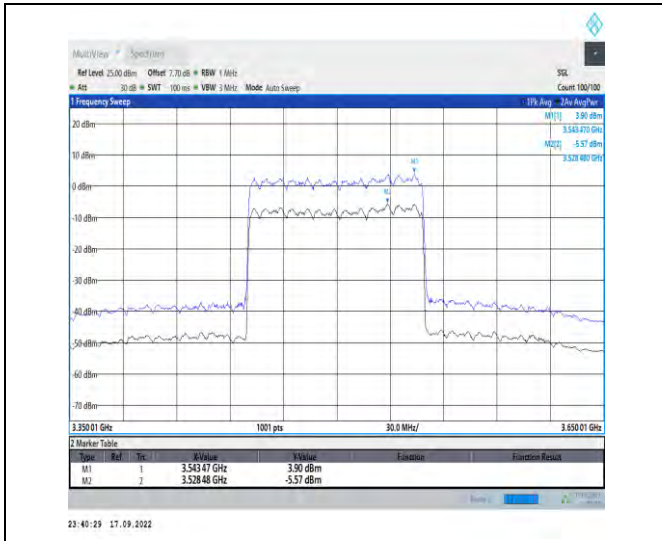
Unless otherwise agreed in writing, this document is issued by the Company subject to its General Conditions of Service printed overleaf, available on request or accessible at <http://www.sgs.com/en/Terms-and-Conditions.aspx> and, for electronic format documents, subject to Terms and Conditions for Electronic Documents at <http://www.sgs.com/en/Terms-and-Conditions/Terms-e-Documents.aspx>. Attention is drawn to the limitation of liability, indemnification and jurisdiction issues defined therein. Any holder of this document is advised that information contained hereon reflects the Company's findings at the time of its intervention only and within the limits of Client's instructions, if any. The Company's sole responsibility is to its Client and this document does not exonerate parties to a transaction from exercising all their rights and obligations under the transaction documents. This document cannot be reproduced except in full, without prior written approval of the Company. Any unauthorized alteration, forgery or falsification of the content or appearance of this document is unlawful and offenders may be prosecuted to the fullest extent of the law. Unless otherwise stated the results shown in this test report refer only to the sample(s) tested and such sample(s) are retained for 30 days only.

Attention: To check the authenticity of testing/inspection report & certificate, please contact us at telephone: (86-755) 8307 1443, or email: CN.Doccheck@sgs.com

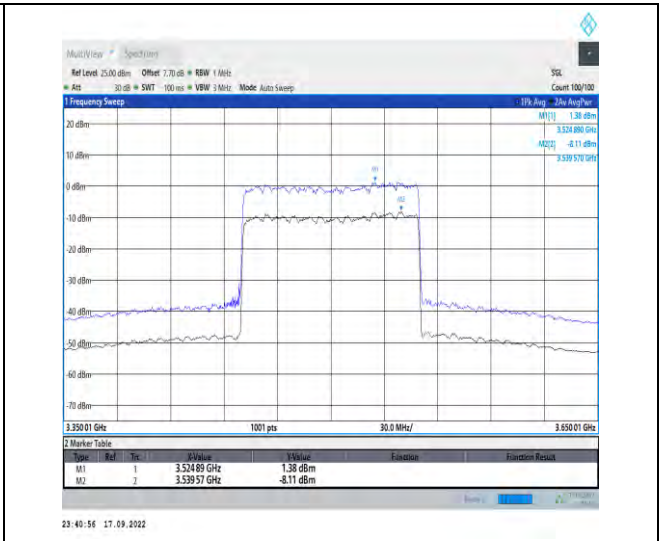
South of No. 6 Plant, No. 1, Runsheng Road, Suzhou Industrial Park, Suzhou Area, China (Jiangsu) Pilot Free Trade Zone 215000 t (86-512) 62992980 www.sgs.com.cn
 中国·苏州·中国(江苏)自由贸易试验区苏州片区苏州工业园区海胜路1号的6号厂房南楼 邮编: 215000 t (86-512) 62992980 sgs.china@sgs.com



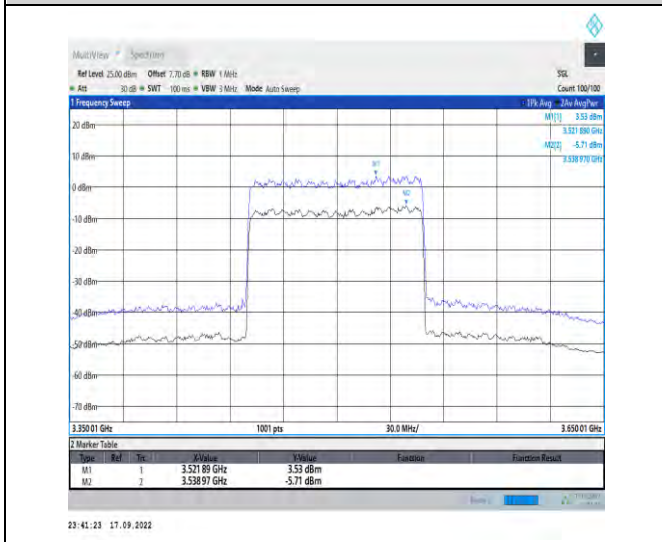
Test Graphs



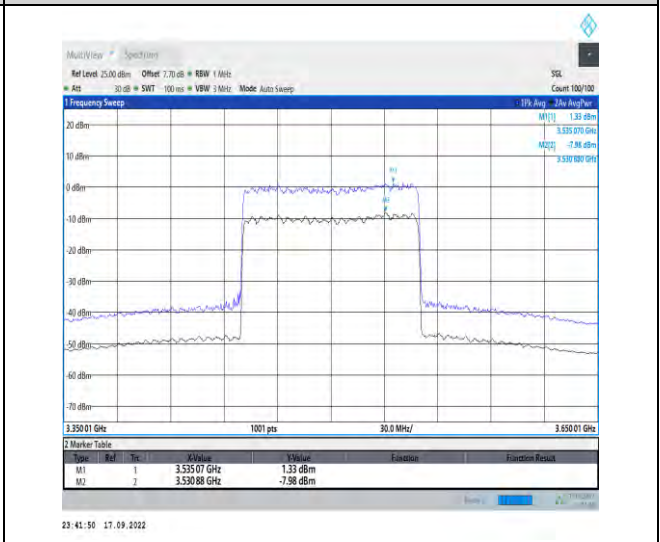
1-N78-3450-3550--30-100-L-1-DFT-256QAM-Outer_Full-270@0-Ant1-9.47-100%-0.00-9.47-- ≤ 13



1-N78-3450-3550--30-100-L-2-CP-256QAM-Outer_Full-273@0-Ant1-9.49-100%-0.00-9.49-- ≤ 13



1-N78-3450-3550--30-100-M-1-DFT-256QAM-Outer_Full-270@0-Ant1-9.24-100%-0.00-9.24-- ≤ 13



1-N78-3450-3550--30-100-M-2-CP-256QAM-Outer_Full-273@0-Ant1-9.31-100%-0.00-9.31-- ≤ 13

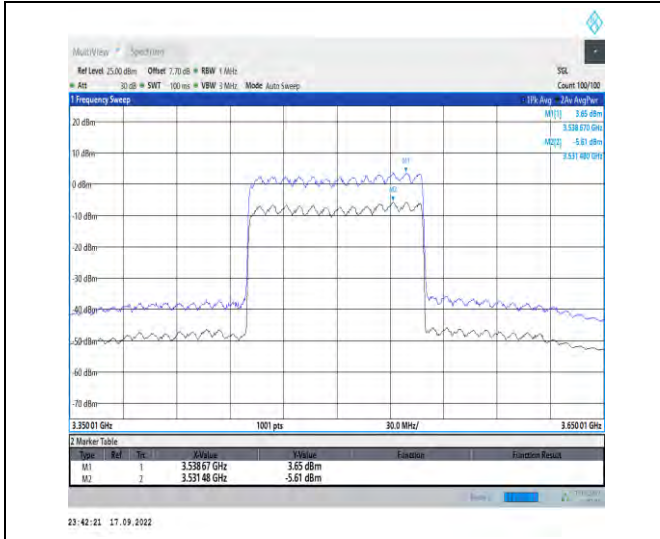


Unless otherwise agreed in writing, this document is issued by the Company subject to its General Conditions of Service printed overleaf, available on request or accessible at <http://www.sgs.com/en/Terms-and-Conditions.aspx> and, for electronic format documents, subject to Terms and Conditions for Electronic Documents at <http://www.sgs.com/en/Terms-and-Conditions/Terms-e-Documents.aspx>. Attention is drawn to the limitation of liability, indemnification and jurisdiction issues defined therein. Any holder of this document is advised that information contained hereon reflects the Company's findings at the time of its intervention only and within the limits of Client's instructions, if any. The Company's sole responsibility is to its Client and this document does not exonerate parties to a transaction from exercising all their rights and obligations under the transaction documents. This document cannot be reproduced except in full, without prior written approval of the Company. Any unauthorized alteration, forgery or falsification of the content or appearance of this document is unlawful and offenders may be prosecuted to the fullest extent of the law. Unless otherwise stated the results shown in this test report refer only to the sample(s) tested and such sample(s) are retained for 30 days only.

Attention: To check the authenticity of testing/inspection report & certificate, please contact us at telephone: (86-755) 8307 1443, or email: CN.Doccheck@sgs.com

South of No. 6 Plant, No. 1, Pansheng Road, Suzhou Industrial Park, Suzhou Area, China (Jiangsu) Pilot Free Trade Zone 215000
 中国·苏州·中国(江苏)自由贸易试验区苏州片区苏州工业园区海胜路1号的6号厂房南楼 邮编: 215000

t (86-512) 62992980 www.sgs.com.cn
 t (86-512) 62992980 sgs.china@sgs.com



1-N78-3450-3550--30-100-H-1-DFT-256QAM-Outer_Full-270@0-Ant1-9.26-100%-0.00-9.26-- ≤ 13

1-N78-3450-3550--30-100-H-2-CP-256QAM-Outer_Full-273@0-Ant1-9.55-100%-0.00-9.55-- ≤ 13



Unless otherwise agreed in writing, this document is issued by the Company subject to its General Conditions of Service printed overleaf, available on request or accessible at <http://www.sgs.com/en/Terms-and-Conditions.aspx> and, for electronic format documents, subject to Terms and Conditions for Electronic Documents at <http://www.sgs.com/en/Terms-and-Conditions/Terms-e-Documents.aspx>. Attention is drawn to the limitation of liability, indemnification and jurisdiction issues defined therein. Any holder of this document is advised that information contained hereon reflects the Company's findings at the time of its intervention only and within the limits of Client's instructions, if any. The Company's sole responsibility is to its Client and this document does not exonerate parties to a transaction from exercising all their rights and obligations under the transaction documents. This document cannot be reproduced except in full, without prior written approval of the Company. Any unauthorized alteration, forgery or falsification of the content or appearance of this document is unlawful and offenders may be prosecuted to the fullest extent of the law. Unless otherwise stated the results shown in this test report refer only to the sample(s) tested and such sample(s) are retained for 30 days only.

Attention: To check the authenticity of testing/inspection report & certificate, please contact us at telephone: (86-755) 8307 1443, or email: CN.Doccheck@sgs.com

South of No. 6 Plant, No. 1, Runsheng Road, Suzhou Industrial Park, Suzhou Area, China (Jiangsu) Pilot Free Trade Zone 215000 t (86-512) 62992980 www.sgs.com.cn
 中国·苏州·中国(江苏)自由贸易试验区苏州片区苏州工业园区润胜路1号的6号厂房南楼 邮编: 215000 t (86-512) 62992980 sgs.china@sgs.com



Report No.: SEWM2209000170RG02

Rev.: 01

Page: 16 of 118

Modulation characteristics for SA

Test Result

Band	SCS	Bandwidth	Modulation	Channel	RB Config	Result	Verdict
N78-3450-3550	30	100	DFT-PI2BPSK	M	Outer_Full	see graph	PASS
N78-3450-3550	30	100	DFT-QPSK	M	Outer_Full	see graph	PASS
N78-3450-3550	30	100	DFT-16QAM	M	Outer_Full	see graph	PASS
N78-3450-3550	30	100	DFT-64QAM	M	Outer_Full	see graph	PASS
N78-3450-3550	30	100	DFT-256QAM	M	Outer_Full	see graph	PASS
N78-3450-3550	30	100	CP-QPSK	M	Outer_Full	see graph	PASS
N78-3450-3550	30	100	CP-16QAM	M	Outer_Full	see graph	PASS
N78-3450-3550	30	100	CP-64QAM	M	Outer_Full	see graph	PASS
N78-3450-3550	30	100	CP-256QAM	M	Outer_Full	see graph	PASS



Unless otherwise agreed in writing, this document is issued by the Company subject to its General Conditions of Service printed overleaf, available on request or accessible at <http://www.sgs.com/en/Terms-and-Conditions.aspx> and, for electronic format documents, subject to Terms and Conditions for Electronic Documents at <http://www.sgs.com/en/Terms-and-Conditions/Terms-e-Documents.aspx>. Attention is drawn to the limitation of liability, indemnification and jurisdiction issues defined therein. Any holder of this document is advised that information contained hereon reflects the Company's findings at the time of its intervention only and within the limits of Client's instructions, if any. The Company's sole responsibility is to its Client and this document does not exonerate parties to a transaction from exercising all their rights and obligations under the transaction documents. This document cannot be reproduced except in full, without prior written approval of the Company. Any unauthorized alteration, forgery or falsification of the content or appearance of this document is unlawful and offenders may be prosecuted to the fullest extent of the law. Unless otherwise stated the results shown in this test report refer only to the sample(s) tested and such sample(s) are retained for 30 days only.

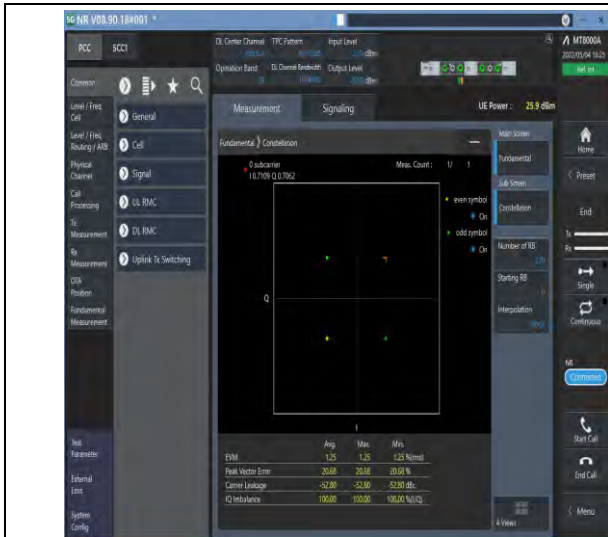
Attention: To check the authenticity of testing/inspection report & certificate, please contact us at telephone: (86-755) 8307 1443, or email: CN.Doccheck@sgs.com

South of No. 6 Plant, No. 1, Runsheng Road, Suzhou Industrial Park, Suzhou Area, China (Jiangsu) Pilot Free Trade Zone 215000
 中国·苏州·中国(江苏)自由贸易试验区苏州片区苏州工业园区润胜路1号的6号厂房南楼 邮编: 215000

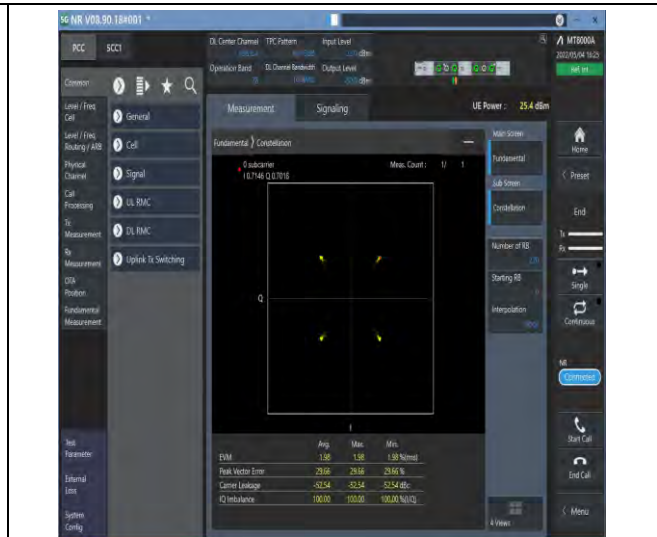
t (86-512) 62992980 www.sgs.com.cn
 t (86-512) 62992980 sgs.china@sgs.com



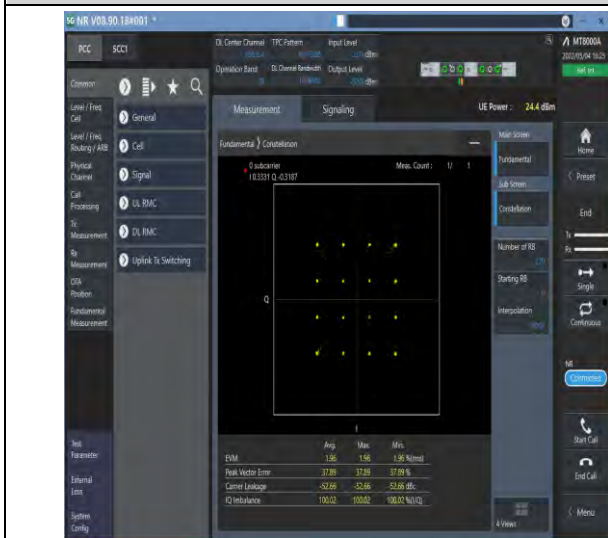
Test Graphs



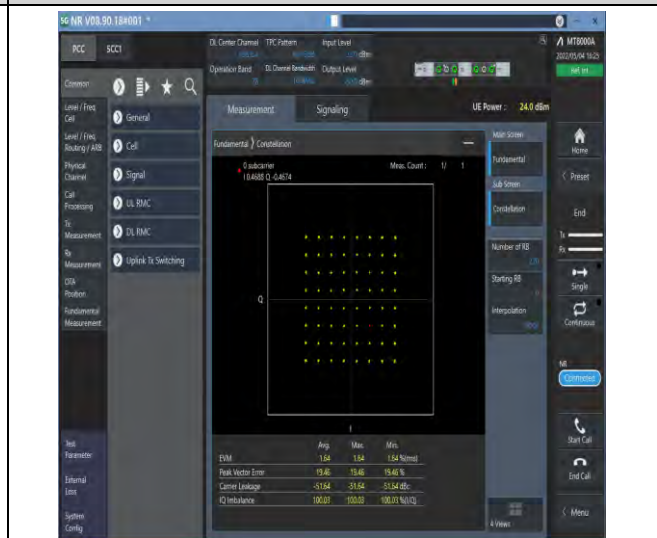
1-N78-3450-3550--30-100-M-1-DFT-PI2BPSK-Outer_Full-270@0-Ant1-see graph-PASS



1-N78-3450-3550--30-100-M-2-DFT-QPSK-Outer_Full-270@0-Ant1-see graph-PASS



1-N78-3450-3550--30-100-M-3-DFT-16QAM-Outer_Full-270@0-Ant1-see graph-PASS



1-N78-3450-3550--30-100-M-4-DFT-64QAM-Outer_Full-270@0-Ant1-see graph-PASS

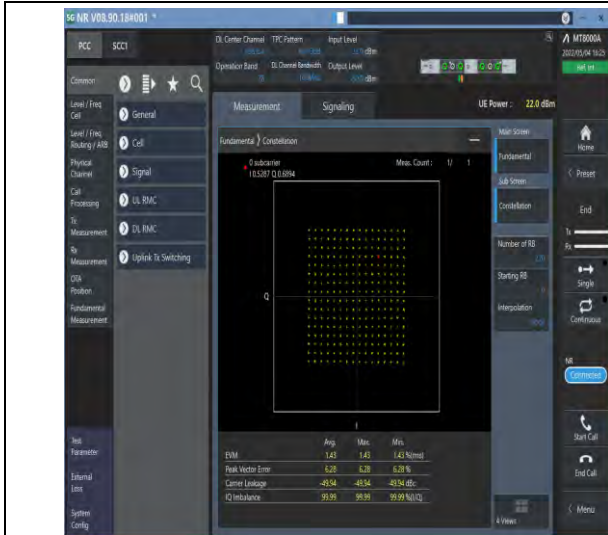


Unless otherwise agreed in writing, this document is issued by the Company subject to its General Conditions of Service printed overleaf, available on request or accessible at <http://www.sgs.com/en/Terms-and-Conditions.aspx> and, for electronic format documents, subject to Terms and Conditions for Electronic Documents at <http://www.sgs.com/en/Terms-and-Conditions/Terms-e-Documents.aspx>. Attention is drawn to the limitation of liability, indemnification and jurisdiction issues defined therein. Any holder of this document is advised that information contained hereon reflects the Company's findings at the time of its intervention only and within the limits of Client's instructions, if any. The Company's sole responsibility is to its Client and this document does not exonerate parties to a transaction from exercising all their rights and obligations under the transaction documents. This document cannot be reproduced except in full, without prior written approval of the Company. Any unauthorized alteration, forgery or falsification of the content or appearance of this document is unlawful and offenders may be prosecuted to the fullest extent of the law. Unless otherwise stated the results shown in this test report refer only to the sample(s) tested and such sample(s) are retained for 30 days only.

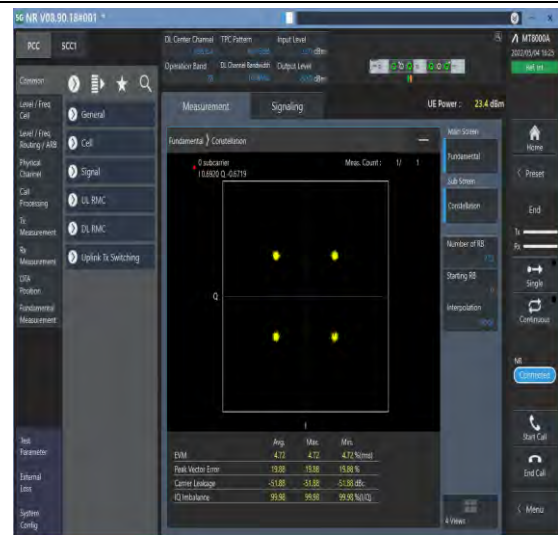
Attention: To check the authenticity of testing/inspection report & certificate, please contact us at telephone: (86-755) 8307 1443, or email: CN.Doccheck@sgs.com

South of No. 6 Plant, No. 1, Pansheng Road, Suzhou Industrial Park, Suzhou Area, China (Jiangsu) Pilot Free Trade Zone 215000
 中国·苏州·中国(江苏)自由贸易试验区苏州片区苏州工业园区海胜路1号的6号厂房南楼 邮编: 215000

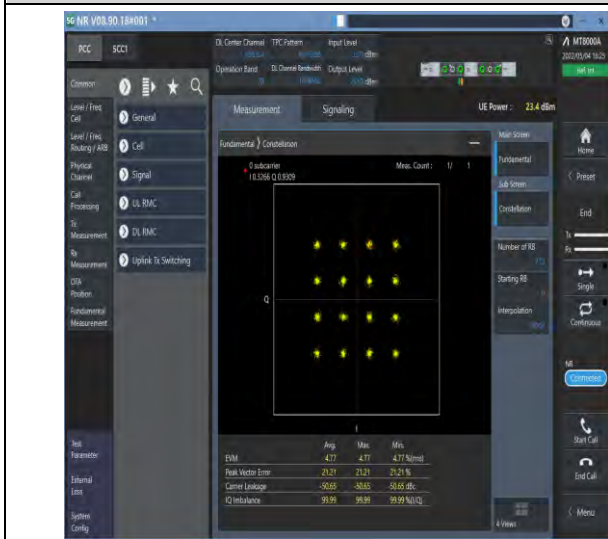
t (86-512) 62992980 www.sgs.com.cn
 t (86-512) 62992980 sgs.china@sgs.com



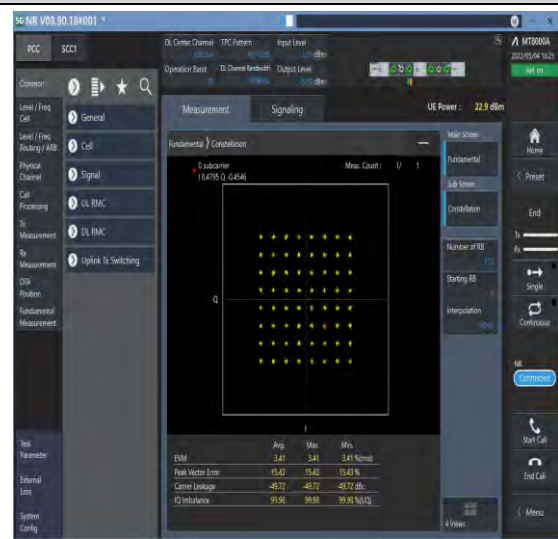
1-N78-3450-3550--30-100-M-5-DFT-256QAM-Outer_Fu
Full-270@0-Ant1-see graph-PASS



1-N78-3450-3550--30-100-M-6-CP-QPSK-Outer_Fu
II-273@0-Ant1-see graph-PASS



1-N78-3450-3550--30-100-M-7-CP-16QAM-Outer_Fu
II-273@0-Ant1-see graph-PASS



1-N78-3450-3550--30-100-M-8-CP-64QAM-Outer_F
ull-273@0-Ant1-see graph-PASS



Unless otherwise agreed in writing, this document is issued by the Company subject to its General Conditions of Service printed overleaf, available on request or accessible at <http://www.sgs.com/en/Terms-and-Conditions.aspx> and, for electronic format documents, subject to Terms and Conditions for Electronic Documents at <http://www.sgs.com/en/Terms-and-Conditions/Terms-e-Documents.aspx>. Attention is drawn to the limitation of liability, indemnification and jurisdiction issues defined therein. Any holder of this document is advised that information contained hereon reflects the Company's findings at the time of its intervention only and within the limits of Client's instructions, if any. The Company's sole responsibility is to its Client and this document does not exonerate parties to a transaction from exercising all their rights and obligations under the transaction documents. This document cannot be reproduced except in full, without prior written approval of the Company. Any unauthorized alteration, forgery or falsification of the content or appearance of this document is unlawful and offenders may be prosecuted to the fullest extent of the law. Unless otherwise stated the results shown in this test report refer only to the sample(s) tested and such sample(s) are retained for 30 days only.

Attention: To check the authenticity of testing/inspection report & certificate, please contact us at telephone: (86-755) 8307 1443, or email: CN.Doccheck@sgs.com

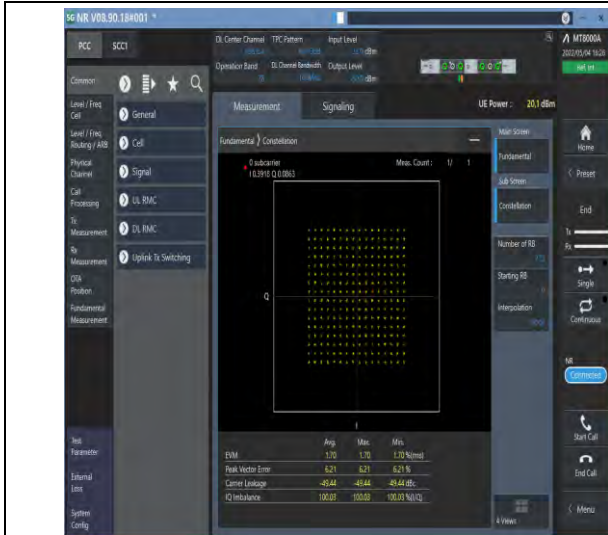
South of No. 6 Plant, No. 1, Runsheng Road, Suzhou Industrial Park, Suzhou Area, China (Jiangsu) Pilot Free Trade Zone 215000 t (86-512) 62992980 www.sgs.com.cn
 中国·苏州·中国(江苏)自由贸易试验区苏州片区苏州工业园区润胜路1号的6号厂房南座 邮编: 215000 t (86-512) 62992980 sgs.china@sgs.com



Report No.: SEWM2209000170RG02

Rev.: 01

Page: 19 of 118



1-N78-3450-3550--30-100-M-9-CP-256QAM-Outer_F
ull-273@0-Ant1-see graph-PASS



Unless otherwise agreed in writing, this document is issued by the Company subject to its General Conditions of Service printed overleaf, available on request or accessible at <http://www.sgs.com/en/Terms-and-Conditions.aspx> and, for electronic format documents, subject to Terms and Conditions for Electronic Documents at <http://www.sgs.com/en/Terms-and-Conditions/Terms-e-Documents.aspx>. Attention is drawn to the limitation of liability, indemnification and jurisdiction issues defined therein. Any holder of this document is advised that information contained hereon reflects the Company's findings at the time of its intervention only and within the limits of Client's instructions, if any. The Company's sole responsibility is to its Client and this document does not exonerate parties to a transaction from exercising all their rights and obligations under the transaction documents. This document cannot be reproduced except in full, without prior written approval of the Company. Any unauthorized alteration, forgery or falsification of the content or appearance of this document is unlawful and offenders may be prosecuted to the fullest extent of the law. Unless otherwise stated the results shown in this test report refer only to the sample(s) tested and such sample(s) are retained for 30 days only.

Attention: To check the authenticity of testing/inspection report & certificate, please contact us at telephone: (86-755) 8307 1443, or email: CN.Doccheck@sgs.com

South of No. 6 Plant, No. 1, Runsheng Road, Suzhou Industrial Park, Suzhou Area, China (Jiangsu) Pilot Free Trade Zone 215000
 中国·苏州·中国(江苏)自由贸易试验区苏州片区苏州工业园区润胜路1号的6号厂房南楼 邮编: 215000

t (86-512) 62992980 www.sgs.com.cn
 t (86-512) 62992980 sgs.china@sgs.com



26dB Bandwidth and Occupied Bandwidth for SA

Test Result

Band	SCS	Bandwidth	Modulation	Channel	RB Config	Result (99%)	Result (26dB)	Verdict
N78-3450-3550	30	20	DFT-QPSK	L	Outer_Full	17.824	18.800	PASS
N78-3450-3550	30	20	DFT-PI2BPSK	L	Outer_Full	17.872	18.920	PASS
N78-3450-3550	30	20	DFT-16QAM	L	Outer_Full	17.777	18.800	PASS
N78-3450-3550	30	20	DFT-64QAM	L	Outer_Full	17.834	18.640	PASS
N78-3450-3550	30	20	DFT-256QAM	L	Outer_Full	17.805	18.800	PASS
N78-3450-3550	30	20	CP-QPSK	L	Outer_Full	18.203	19.480	PASS
N78-3450-3550	30	20	CP-16QAM	L	Outer_Full	18.242	19.440	PASS
N78-3450-3550	30	20	CP-64QAM	L	Outer_Full	18.178	19.480	PASS
N78-3450-3550	30	20	CP-256QAM	L	Outer_Full	18.161	19.160	PASS
N78-3450-3550	30	20	DFT-QPSK	M	Outer_Full	17.827	18.920	PASS
N78-3450-3550	30	20	DFT-PI2BPSK	M	Outer_Full	17.846	19.040	PASS
N78-3450-3550	30	20	DFT-16QAM	M	Outer_Full	17.83	18.600	PASS
N78-3450-3550	30	20	DFT-64QAM	M	Outer_Full	17.845	19.000	PASS
N78-3450-3550	30	20	DFT-256QAM	M	Outer_Full	17.814	18.720	PASS
N78-3450-3550	30	20	CP-QPSK	M	Outer_Full	18.118	19.320	PASS
N78-3450-3550	30	20	CP-16QAM	M	Outer_Full	18.242	19.120	PASS
N78-3450-3550	30	20	CP-64QAM	M	Outer_Full	18.247	19.200	PASS
N78-3450-3550	30	20	CP-256QAM	M	Outer_Full	18.166	19.200	PASS
N78-3450-3550	30	20	DFT-QPSK	H	Outer_Full	17.801	18.840	PASS
N78-3450-3550	30	20	DFT-PI2BPSK	H	Outer_Full	17.869	19.080	PASS
N78-3450-3550	30	20	DFT-16QAM	H	Outer_Full	17.901	18.880	PASS
N78-3450-3550	30	20	DFT-64QAM	H	Outer_Full	17.838	18.640	PASS
N78-3450-3550	30	20	DFT-256QAM	H	Outer_Full	17.888	18.720	PASS
N78-3450-3550	30	20	CP-QPSK	H	Outer_Full	18.193	19.120	PASS
N78-3450-3550	30	20	CP-16QAM	H	Outer_Full	18.224	19.320	PASS
N78-3450-3550	30	20	CP-64QAM	H	Outer_Full	18.235	19.360	PASS
N78-3450-3550	30	20	CP-256QAM	H	Outer_Full	18.133	19.400	PASS
N78-3450-3550	30	30	DFT-QPSK	L	Outer_Full	26.843	28.380	PASS



Unless otherwise agreed in writing, this document is issued by the Company subject to its General Conditions of Service printed overleaf, available on request or accessible at <http://www.sgs.com/en/Terms-and-Conditions.aspx> and, for electronic format documents, subject to Terms and Conditions for Electronic Documents at <http://www.sgs.com/en/Terms-and-Conditions/Terms-e-Documents.aspx>. Attention is drawn to the limitation of liability, indemnification and jurisdiction issues defined therein. Any holder of this document is advised that information contained hereon reflects the Company's findings at the time of its intervention only and within the limits of Client's instructions, if any. The Company's sole responsibility is to its Client and this document does not exonerate parties to a transaction from exercising all their rights and obligations under the transaction documents. This document cannot be reproduced except in full, without prior written approval of the Company. Any unauthorized alteration, forgery or falsification of the content or appearance of this document is unlawful and offenders may be prosecuted to the fullest extent of the law. Unless otherwise stated the results shown in this test report refer only to the sample(s) tested and such sample(s) are retained for 30 days only.

Attention: To check the authenticity of testing/inspection report & certificate, please contact us at telephone: (86-755) 8307 1443, or email: CN.Doccheck@sgs.com

South of No. 6 Plant, No. 1, Pansheng Road, Suzhou Industrial Park, Suzhou Area, China (Jiangsu) Pilot Free Trade Zone 215000
 中国·苏州·中国(江苏)自由贸易试验区苏州片区苏州工业园区海胜路1号的6号厂房南楼 邮编: 215000

t (86-512) 62992980 www.sgs.com.cn
 t (86-512) 62992980 sgs.china@sgs.com



Report No.: SEWM2209000170RG02

Rev.: 01

Page: 21 of 118

N78-3450-3550	30	30	DFT-PI2BPSK	L	Outer_Full	26.814	28.620	PASS
N78-3450-3550	30	30	DFT-16QAM	L	Outer_Full	26.777	28.020	PASS
N78-3450-3550	30	30	DFT-64QAM	L	Outer_Full	26.738	28.440	PASS
N78-3450-3550	30	30	DFT-256QAM	L	Outer_Full	26.803	28.260	PASS
N78-3450-3550	30	30	CP-QPSK	L	Outer_Full	27.87	29.160	PASS
N78-3450-3550	30	30	CP-16QAM	L	Outer_Full	27.834	29.100	PASS
N78-3450-3550	30	30	CP-64QAM	L	Outer_Full	27.808	29.700	PASS
N78-3450-3550	30	30	CP-256QAM	L	Outer_Full	27.952	29.040	PASS
N78-3450-3550	30	30	DFT-QPSK	M	Outer_Full	26.879	27.840	PASS
N78-3450-3550	30	30	DFT-PI2BPSK	M	Outer_Full	26.846	27.780	PASS
N78-3450-3550	30	30	DFT-16QAM	M	Outer_Full	26.752	28.140	PASS
N78-3450-3550	30	30	DFT-64QAM	M	Outer_Full	26.768	28.080	PASS
N78-3450-3550	30	30	DFT-256QAM	M	Outer_Full	26.838	28.680	PASS
N78-3450-3550	30	30	CP-QPSK	M	Outer_Full	27.811	29.340	PASS
N78-3450-3550	30	30	CP-16QAM	M	Outer_Full	27.86	29.100	PASS
N78-3450-3550	30	30	CP-64QAM	M	Outer_Full	27.816	28.860	PASS
N78-3450-3550	30	30	CP-256QAM	M	Outer_Full	27.883	28.980	PASS
N78-3450-3550	30	30	DFT-QPSK	H	Outer_Full	26.703	28.260	PASS
N78-3450-3550	30	30	DFT-PI2BPSK	H	Outer_Full	26.671	28.560	PASS
N78-3450-3550	30	30	DFT-16QAM	H	Outer_Full	26.746	28.380	PASS
N78-3450-3550	30	30	DFT-64QAM	H	Outer_Full	26.725	28.620	PASS
N78-3450-3550	30	30	DFT-256QAM	H	Outer_Full	26.786	28.020	PASS
N78-3450-3550	30	30	CP-QPSK	H	Outer_Full	27.803	29.460	PASS
N78-3450-3550	30	30	CP-16QAM	H	Outer_Full	27.799	28.920	PASS
N78-3450-3550	30	30	CP-64QAM	H	Outer_Full	27.822	28.980	PASS
N78-3450-3550	30	30	CP-256QAM	H	Outer_Full	27.773	29.100	PASS
N78-3450-3550	30	40	DFT-QPSK	L	Outer_Full	35.681	37.520	PASS
N78-3450-3550	30	40	DFT-PI2BPSK	L	Outer_Full	35.672	37.600	PASS
N78-3450-3550	30	40	DFT-16QAM	L	Outer_Full	35.798	37.440	PASS
N78-3450-3550	30	40	DFT-64QAM	L	Outer_Full	35.762	37.360	PASS
N78-3450-3550	30	40	DFT-256QAM	L	Outer_Full	35.743	37.360	PASS
N78-3450-3550	30	40	CP-QPSK	L	Outer_Full	37.916	39.600	PASS
N78-3450-3550	30	40	CP-16QAM	L	Outer_Full	37.822	39.680	PASS
N78-3450-3550	30	40	CP-64QAM	L	Outer_Full	37.769	40.480	PASS
N78-3450-3550	30	40	CP-256QAM	L	Outer_Full	37.916	39.600	PASS



Unless otherwise agreed in writing, this document is issued by the Company subject to its General Conditions of Service printed overleaf, available on request or accessible at <http://www.sgs.com/en/Terms-and-Conditions.aspx> and, for electronic format documents, subject to Terms and Conditions for Electronic Documents at <http://www.sgs.com/en/Terms-and-Conditions/Terms-e-Documents.aspx>. Attention is drawn to the limitation of liability, indemnification and jurisdiction issues defined therein. Any holder of this document is advised that information contained hereon reflects the Company's findings at the time of its intervention only and within the limits of Client's instructions, if any. The Company's sole responsibility is to its Client and this document does not exonerate parties to a transaction from exercising all their rights and obligations under the transaction documents. This document cannot be reproduced except in full, without prior written approval of the Company. Any unauthorized alteration, forgery or falsification of the content or appearance of this document is unlawful and offenders may be prosecuted to the fullest extent of the law. Unless otherwise stated the results shown in this test report refer only to the sample(s) tested and such sample(s) are retained for 30 days only.

Attention: To check the authenticity of testing/inspection report & certificate, please contact us at telephone: (86-755) 8307 1443, or email: CN.Doccheck@sgs.com

South of No. 6 Plant, No. 1, Runsheng Road, Suzhou Industrial Park, Suzhou Area, China (Jiangsu) Pilot Free Trade Zone 215000
 中国·苏州·中国(江苏)自由贸易试验区苏州片区苏州工业园区润胜路1号的6号厂房南楼 邮编: 215000

t (86-512) 62992980 www.sgs.com.cn
 t (86-512) 62992980 sgs.china@sgs.com



Report No.: SEWM2209000170RG02

Rev.: 01

Page: 22 of 118

N78-3450-3550	30	40	DFT-QPSK	M	Outer_Full	35.697	37.680	PASS
N78-3450-3550	30	40	DFT-PI2BPSK	M	Outer_Full	35.762	37.280	PASS
N78-3450-3550	30	40	DFT-16QAM	M	Outer_Full	35.824	37.520	PASS
N78-3450-3550	30	40	DFT-64QAM	M	Outer_Full	35.85	37.760	PASS
N78-3450-3550	30	40	DFT-256QAM	M	Outer_Full	35.817	37.520	PASS
N78-3450-3550	30	40	CP-QPSK	M	Outer_Full	37.659	39.280	PASS
N78-3450-3550	30	40	CP-16QAM	M	Outer_Full	37.932	39.840	PASS
N78-3450-3550	30	40	CP-64QAM	M	Outer_Full	37.861	39.680	PASS
N78-3450-3550	30	40	CP-256QAM	M	Outer_Full	37.953	39.760	PASS
N78-3450-3550	30	40	DFT-QPSK	H	Outer_Full	35.653	37.600	PASS
N78-3450-3550	30	40	DFT-PI2BPSK	H	Outer_Full	35.625	38.160	PASS
N78-3450-3550	30	40	DFT-16QAM	H	Outer_Full	35.769	37.520	PASS
N78-3450-3550	30	40	DFT-64QAM	H	Outer_Full	35.632	37.440	PASS
N78-3450-3550	30	40	DFT-256QAM	H	Outer_Full	35.817	37.600	PASS
N78-3450-3550	30	40	CP-QPSK	H	Outer_Full	37.644	39.200	PASS
N78-3450-3550	30	40	CP-16QAM	H	Outer_Full	37.885	39.600	PASS
N78-3450-3550	30	40	CP-64QAM	H	Outer_Full	37.831	40.080	PASS
N78-3450-3550	30	40	CP-256QAM	H	Outer_Full	37.928	39.520	PASS
N78-3450-3550	30	50	DFT-QPSK	L	Outer_Full	45.718	47.600	PASS
N78-3450-3550	30	50	DFT-PI2BPSK	L	Outer_Full	45.739	47.800	PASS
N78-3450-3550	30	50	DFT-16QAM	L	Outer_Full	45.69	47.700	PASS
N78-3450-3550	30	50	DFT-64QAM	L	Outer_Full	45.695	47.400	PASS
N78-3450-3550	30	50	DFT-256QAM	L	Outer_Full	45.508	47.600	PASS
N78-3450-3550	30	50	CP-QPSK	L	Outer_Full	47.434	49.400	PASS
N78-3450-3550	30	50	CP-16QAM	L	Outer_Full	47.435	49.200	PASS
N78-3450-3550	30	50	CP-64QAM	L	Outer_Full	47.307	49.200	PASS
N78-3450-3550	30	50	CP-256QAM	L	Outer_Full	47.347	49.600	PASS
N78-3450-3550	30	50	DFT-QPSK	M	Outer_Full	45.728	47.800	PASS
N78-3450-3550	30	50	DFT-PI2BPSK	M	Outer_Full	45.704	48.000	PASS
N78-3450-3550	30	50	DFT-16QAM	M	Outer_Full	45.733	47.500	PASS
N78-3450-3550	30	50	DFT-64QAM	M	Outer_Full	45.544	48.000	PASS
N78-3450-3550	30	50	DFT-256QAM	M	Outer_Full	45.769	47.400	PASS
N78-3450-3550	30	50	CP-QPSK	M	Outer_Full	47.554	49.500	PASS
N78-3450-3550	30	50	CP-16QAM	M	Outer_Full	47.415	49.300	PASS
N78-3450-3550	30	50	CP-64QAM	M	Outer_Full	47.539	49.700	PASS



Unless otherwise agreed in writing, this document is issued by the Company subject to its General Conditions of Service printed overleaf, available on request or accessible at <http://www.sgs.com/en/Terms-and-Conditions.aspx> and, for electronic format documents, subject to Terms and Conditions for Electronic Documents at <http://www.sgs.com/en/Terms-and-Conditions/Terms-e-Documents.aspx>. Attention is drawn to the limitation of liability, indemnification and jurisdiction issues defined therein. Any holder of this document is advised that information contained hereon reflects the Company's findings at the time of its intervention only and within the limits of Client's instructions, if any. The Company's sole responsibility is to its Client and this document does not exonerate parties to a transaction from exercising all their rights and obligations under the transaction documents. This document cannot be reproduced except in full, without prior written approval of the Company. Any unauthorized alteration, forgery or falsification of the content or appearance of this document is unlawful and offenders may be prosecuted to the fullest extent of the law. Unless otherwise stated the results shown in this test report refer only to the sample(s) tested and such sample(s) are retained for 30 days only.

Attention: To check the authenticity of testing/inspection report & certificate, please contact us at telephone: (86-755) 8307 1443, or email: CN.Doccheck@sgs.com

South of No. 6 Plant, No. 1, Runsheng Road, Suzhou Industrial Park, Suzhou Area, China (Jiangsu) Pilot Free Trade Zone 215000 t (86-512) 62992980 www.sgs.com.cn
 中国·苏州·中国(江苏)自由贸易试验区苏州片区苏州工业园区润胜路1号的6号厂房南楼 邮编: 215000 t (86-512) 62992980 sgs.china@sgs.com



Report No.: SEWM2209000170RG02

Rev.: 01

Page: 23 of 118

N78-3450-3550	30	50	CP-256QAM	M	Outer_Full	47.456	49.800	PASS
N78-3450-3550	30	50	DFT-QPSK	H	Outer_Full	45.656	47.400	PASS
N78-3450-3550	30	50	DFT-PI2BPSK	H	Outer_Full	45.756	47.300	PASS
N78-3450-3550	30	50	DFT-16QAM	H	Outer_Full	45.688	47.300	PASS
N78-3450-3550	30	50	DFT-64QAM	H	Outer_Full	45.743	48.100	PASS
N78-3450-3550	30	50	DFT-256QAM	H	Outer_Full	45.693	48.000	PASS
N78-3450-3550	30	50	CP-QPSK	H	Outer_Full	47.309	49.500	PASS
N78-3450-3550	30	50	CP-16QAM	H	Outer_Full	47.294	49.400	PASS
N78-3450-3550	30	50	CP-64QAM	H	Outer_Full	47.353	49.600	PASS
N78-3450-3550	30	50	CP-256QAM	H	Outer_Full	47.402	49.600	PASS
N78-3450-3550	30	60	DFT-QPSK	L	Outer_Full	57.786	59.880	PASS
N78-3450-3550	30	60	DFT-PI2BPSK	L	Outer_Full	57.73	59.760	PASS
N78-3450-3550	30	60	DFT-16QAM	L	Outer_Full	57.793	59.880	PASS
N78-3450-3550	30	60	DFT-64QAM	L	Outer_Full	57.81	59.760	PASS
N78-3450-3550	30	60	DFT-256QAM	L	Outer_Full	57.811	60.000	PASS
N78-3450-3550	30	60	CP-QPSK	L	Outer_Full	57.835	59.640	PASS
N78-3450-3550	30	60	CP-16QAM	L	Outer_Full	57.751	60.000	PASS
N78-3450-3550	30	60	CP-64QAM	L	Outer_Full	57.845	59.880	PASS
N78-3450-3550	30	60	CP-256QAM	L	Outer_Full	57.835	59.640	PASS
N78-3450-3550	30	60	DFT-QPSK	M	Outer_Full	57.987	59.760	PASS
N78-3450-3550	30	60	DFT-PI2BPSK	M	Outer_Full	57.947	59.640	PASS
N78-3450-3550	30	60	DFT-16QAM	M	Outer_Full	57.885	59.880	PASS
N78-3450-3550	30	60	DFT-64QAM	M	Outer_Full	57.91	59.760	PASS
N78-3450-3550	30	60	DFT-256QAM	M	Outer_Full	57.793	60.000	PASS
N78-3450-3550	30	60	CP-QPSK	M	Outer_Full	57.937	60.120	PASS
N78-3450-3550	30	60	CP-16QAM	M	Outer_Full	57.882	59.880	PASS
N78-3450-3550	30	60	CP-64QAM	M	Outer_Full	57.814	59.760	PASS
N78-3450-3550	30	60	CP-256QAM	M	Outer_Full	57.983	59.760	PASS
N78-3450-3550	30	60	DFT-QPSK	H	Outer_Full	57.651	59.760	PASS
N78-3450-3550	30	60	DFT-PI2BPSK	H	Outer_Full	57.778	60.000	PASS
N78-3450-3550	30	60	DFT-16QAM	H	Outer_Full	57.847	59.640	PASS
N78-3450-3550	30	60	DFT-64QAM	H	Outer_Full	57.791	59.880	PASS
N78-3450-3550	30	60	DFT-256QAM	H	Outer_Full	57.768	59.640	PASS
N78-3450-3550	30	60	CP-QPSK	H	Outer_Full	57.756	59.760	PASS
N78-3450-3550	30	60	CP-16QAM	H	Outer_Full	57.763	60.000	PASS



Unless otherwise agreed in writing, this document is issued by the Company subject to its General Conditions of Service printed overleaf, available on request or accessible at <http://www.sgs.com/en/Terms-and-Conditions.aspx> and, for electronic format documents, subject to Terms and Conditions for Electronic Documents at <http://www.sgs.com/en/Terms-and-Conditions/Terms-e-Documents.aspx>. Attention is drawn to the limitation of liability, indemnification and jurisdiction issues defined therein. Any holder of this document is advised that information contained hereon reflects the Company's findings at the time of its intervention only and within the limits of Client's instructions, if any. The Company's sole responsibility is to its Client and this document does not exonerate parties to a transaction from exercising all their rights and obligations under the transaction documents. This document cannot be reproduced except in full, without prior written approval of the Company. Any unauthorized alteration, forgery or falsification of the content or appearance of this document is unlawful and offenders may be prosecuted to the fullest extent of the law. Unless otherwise stated the results shown in this test report refer only to the sample(s) tested and such sample(s) are retained for 30 days only.

Attention: To check the authenticity of testing/inspection report & certificate, please contact us at telephone: (86-755) 8307 1443, or email: CN.Doccheck@sgs.com

South of No. 6 Plant, No. 1, Runsheng Road, Suzhou Industrial Park, Suzhou Area, China (Jiangsu) Pilot Free Trade Zone 215000 t (86-512) 62992980 www.sgs.com.cn
 中国·苏州·中国(江苏)自由贸易试验区苏州片区苏州工业园区润胜路1号的6号厂房南楼 邮编: 215000 t (86-512) 62992980 sgs.china@sgs.com



Report No.: SEWM2209000170RG02

Rev.: 01

Page: 24 of 118

N78-3450-3550	30	60	CP-64QAM	H	Outer_Full	57.566	59.640	PASS
N78-3450-3550	30	60	CP-256QAM	H	Outer_Full	57.756	59.760	PASS
N78-3450-3550	30	80	DFT-QPSK	L	Outer_Full	77.032	80.320	PASS
N78-3450-3550	30	80	DFT-PI2BPSK	L	Outer_Full	77.135	80.320	PASS
N78-3450-3550	30	80	DFT-16QAM	L	Outer_Full	77.017	80.320	PASS
N78-3450-3550	30	80	DFT-64QAM	L	Outer_Full	77.244	80.320	PASS
N78-3450-3550	30	80	DFT-256QAM	L	Outer_Full	77.138	80.160	PASS
N78-3450-3550	30	80	CP-QPSK	L	Outer_Full	77.504	80.480	PASS
N78-3450-3550	30	80	CP-16QAM	L	Outer_Full	77.327	80.640	PASS
N78-3450-3550	30	80	CP-64QAM	L	Outer_Full	77.182	80.000	PASS
N78-3450-3550	30	80	CP-256QAM	L	Outer_Full	77.424	80.640	PASS
N78-3450-3550	30	80	DFT-QPSK	M	Outer_Full	77.218	80.160	PASS
N78-3450-3550	30	80	DFT-PI2BPSK	M	Outer_Full	77.103	80.320	PASS
N78-3450-3550	30	80	DFT-16QAM	M	Outer_Full	77.322	80.160	PASS
N78-3450-3550	30	80	DFT-64QAM	M	Outer_Full	76.896	80.320	PASS
N78-3450-3550	30	80	DFT-256QAM	M	Outer_Full	77.305	80.320	PASS
N78-3450-3550	30	80	CP-QPSK	M	Outer_Full	77.255	80.640	PASS
N78-3450-3550	30	80	CP-16QAM	M	Outer_Full	77.758	80.800	PASS
N78-3450-3550	30	80	CP-64QAM	M	Outer_Full	77.358	81.760	PASS
N78-3450-3550	30	80	CP-256QAM	M	Outer_Full	77.585	80.480	PASS
N78-3450-3550	30	80	DFT-QPSK	H	Outer_Full	76.934	80.160	PASS
N78-3450-3550	30	80	DFT-PI2BPSK	H	Outer_Full	77.148	80.320	PASS
N78-3450-3550	30	80	DFT-16QAM	H	Outer_Full	77.018	80.160	PASS
N78-3450-3550	30	80	DFT-64QAM	H	Outer_Full	77.181	80.160	PASS
N78-3450-3550	30	80	DFT-256QAM	H	Outer_Full	77.137	80.320	PASS
N78-3450-3550	30	80	CP-QPSK	H	Outer_Full	77.536	80.640	PASS
N78-3450-3550	30	80	CP-16QAM	H	Outer_Full	77.366	80.640	PASS
N78-3450-3550	30	80	CP-64QAM	H	Outer_Full	77.137	80.320	PASS
N78-3450-3550	30	80	CP-256QAM	H	Outer_Full	77.334	80.480	PASS
N78-3450-3550	30	90	DFT-QPSK	L	Outer_Full	86.799	90.000	PASS
N78-3450-3550	30	90	DFT-PI2BPSK	L	Outer_Full	86.683	90.000	PASS
N78-3450-3550	30	90	DFT-16QAM	L	Outer_Full	86.582	90.360	PASS
N78-3450-3550	30	90	DFT-64QAM	L	Outer_Full	86.595	89.820	PASS
N78-3450-3550	30	90	DFT-256QAM	L	Outer_Full	86.984	90.000	PASS
N78-3450-3550	30	90	CP-QPSK	L	Outer_Full	87.484	90.720	PASS



Unless otherwise agreed in writing, this document is issued by the Company subject to its General Conditions of Service printed overleaf, available on request or accessible at <http://www.sgs.com/en/Terms-and-Conditions.aspx> and, for electronic format documents, subject to Terms and Conditions for Electronic Documents at <http://www.sgs.com/en/Terms-and-Conditions/Terms-e-Documents.aspx>. Attention is drawn to the limitation of liability, indemnification and jurisdiction issues defined therein. Any holder of this document is advised that information contained hereon reflects the Company's findings at the time of its intervention only and within the limits of Client's instructions, if any. The Company's sole responsibility is to its Client and this document does not exonerate parties to a transaction from exercising all their rights and obligations under the transaction documents. This document cannot be reproduced except in full, without prior written approval of the Company. Any unauthorized alteration, forgery or falsification of the content or appearance of this document is unlawful and offenders may be prosecuted to the fullest extent of the law. Unless otherwise stated the results shown in this test report refer only to the sample(s) tested and such sample(s) are retained for 30 days only.

Attention: To check the authenticity of testing/inspection report & certificate, please contact us at telephone: (86-755) 8307 1443, or email: CN.Doccheck@sgs.com

South of No. 6 Plant, No. 1, Runsheng Road, Suzhou Industrial Park, Suzhou Area, China (Jiangsu) Pilot Free Trade Zone 215000 t (86-512) 62992980 www.sgs.com.cn
 中国·苏州·中国(江苏)自由贸易试验区苏州片区苏州工业园区润胜路1号的6号厂房南楼 邮编: 215000 t (86-512) 62992980 sgs.china@sgs.com



Report No.: SEWM2209000170RG02

Rev.: 01

Page: 25 of 118

N78-3450-3550	30	90	CP-16QAM	L	Outer_Full	87.385	90.720	PASS
N78-3450-3550	30	90	CP-64QAM	L	Outer_Full	87.227	90.720	PASS
N78-3450-3550	30	90	CP-256QAM	L	Outer_Full	87.435	90.720	PASS
N78-3450-3550	30	90	DFT-QPSK	M	Outer_Full	86.763	90.000	PASS
N78-3450-3550	30	90	DFT-PI2BPSK	M	Outer_Full	86.88	90.180	PASS
N78-3450-3550	30	90	DFT-16QAM	M	Outer_Full	86.583	90.180	PASS
N78-3450-3550	30	90	DFT-64QAM	M	Outer_Full	86.608	90.000	PASS
N78-3450-3550	30	90	DFT-256QAM	M	Outer_Full	86.569	90.000	PASS
N78-3450-3550	30	90	CP-QPSK	M	Outer_Full	87.423	90.720	PASS
N78-3450-3550	30	90	CP-16QAM	M	Outer_Full	87.429	90.720	PASS
N78-3450-3550	30	90	CP-64QAM	M	Outer_Full	87.522	90.540	PASS
N78-3450-3550	30	90	CP-256QAM	M	Outer_Full	87.359	90.540	PASS
N78-3450-3550	30	90	DFT-QPSK	H	Outer_Full	86.702	90.360	PASS
N78-3450-3550	30	90	DFT-PI2BPSK	H	Outer_Full	86.44	90.000	PASS
N78-3450-3550	30	90	DFT-16QAM	H	Outer_Full	86.611	90.000	PASS
N78-3450-3550	30	90	DFT-64QAM	H	Outer_Full	86.702	90.180	PASS
N78-3450-3550	30	90	DFT-256QAM	H	Outer_Full	86.612	90.000	PASS
N78-3450-3550	30	90	CP-QPSK	H	Outer_Full	87.214	90.900	PASS
N78-3450-3550	30	90	CP-16QAM	H	Outer_Full	87.334	90.720	PASS
N78-3450-3550	30	90	CP-64QAM	H	Outer_Full	87.456	90.540	PASS
N78-3450-3550	30	90	CP-256QAM	H	Outer_Full	87.399	90.720	PASS
N78-3450-3550	30	100	DFT-QPSK	L	Outer_Full	96.438	99.800	PASS
N78-3450-3550	30	100	DFT-PI2BPSK	L	Outer_Full	96.343	99.600	PASS
N78-3450-3550	30	100	DFT-16QAM	L	Outer_Full	96.405	99.800	PASS
N78-3450-3550	30	100	DFT-64QAM	L	Outer_Full	96.172	99.800	PASS
N78-3450-3550	30	100	DFT-256QAM	L	Outer_Full	96.209	99.800	PASS
N78-3450-3550	30	100	CP-QPSK	L	Outer_Full	97.182	100.800	PASS
N78-3450-3550	30	100	CP-16QAM	L	Outer_Full	97.348	100.800	PASS
N78-3450-3550	30	100	CP-64QAM	L	Outer_Full	97.293	101.000	PASS
N78-3450-3550	30	100	CP-256QAM	L	Outer_Full	97.209	100.600	PASS
N78-3450-3550	30	100	DFT-QPSK	M	Outer_Full	96.49	99.800	PASS
N78-3450-3550	30	100	DFT-PI2BPSK	M	Outer_Full	96.286	99.800	PASS
N78-3450-3550	30	100	DFT-16QAM	M	Outer_Full	96.306	99.800	PASS
N78-3450-3550	30	100	DFT-64QAM	M	Outer_Full	96.341	100.000	PASS
N78-3450-3550	30	100	DFT-256QAM	M	Outer_Full	96.264	99.800	PASS



Unless otherwise agreed in writing, this document is issued by the Company subject to its General Conditions of Service printed overleaf, available on request or accessible at <http://www.sgs.com/en/Terms-and-Conditions.aspx> and, for electronic format documents, subject to Terms and Conditions for Electronic Documents at <http://www.sgs.com/en/Terms-and-Conditions/Terms-e-Documents.aspx>. Attention is drawn to the limitation of liability, indemnification and jurisdiction issues defined therein. Any holder of this document is advised that information contained hereon reflects the Company's findings at the time of its intervention only and within the limits of Client's instructions, if any. The Company's sole responsibility is to its Client and this document does not exonerate parties to a transaction from exercising all their rights and obligations under the transaction documents. This document cannot be reproduced except in full, without prior written approval of the Company. Any unauthorized alteration, forgery or falsification of the content or appearance of this document is unlawful and offenders may be prosecuted to the fullest extent of the law. Unless otherwise stated the results shown in this test report refer only to the sample(s) tested and such sample(s) are retained for 30 days only.

Attention: To check the authenticity of testing/inspection report & certificate, please contact us at telephone: (86-755) 8307 1443, or email: CN.Doccheck@sgs.com

South of No. 6 Plant, No. 1, Runsheng Road, Suzhou Industrial Park, Suzhou Area, China (Jiangsu) Pilot Free Trade Zone 215000 t (86-512) 62992980 www.sgs.com.cn
 中国·苏州·中国(江苏)自由贸易试验区苏州片区苏州工业园区润胜路1号的6号厂房南楼 邮编: 215000 t (86-512) 62992980 sgs.china@sgs.com



Report No.: SEWM2209000170RG02

Rev.: 01

Page: 26 of 118

N78-3450-3550	30	100	CP-QPSK	M	Outer_Full	96.987	100.600	PASS
N78-3450-3550	30	100	CP-16QAM	M	Outer_Full	97.354	101.000	PASS
N78-3450-3550	30	100	CP-64QAM	M	Outer_Full	97.041	100.800	PASS
N78-3450-3550	30	100	CP-256QAM	M	Outer_Full	97.368	100.800	PASS
N78-3450-3550	30	100	DFT-QPSK	H	Outer_Full	96.419	99.800	PASS
N78-3450-3550	30	100	DFT-PI2BPSK	H	Outer_Full	96.324	99.800	PASS
N78-3450-3550	30	100	DFT-16QAM	H	Outer_Full	96.342	99.600	PASS
N78-3450-3550	30	100	DFT-64QAM	H	Outer_Full	96.333	99.800	PASS
N78-3450-3550	30	100	DFT-256QAM	H	Outer_Full	96.16	99.800	PASS
N78-3450-3550	30	100	CP-QPSK	H	Outer_Full	97.268	100.800	PASS
N78-3450-3550	30	100	CP-16QAM	H	Outer_Full	97.447	100.800	PASS
N78-3450-3550	30	100	CP-64QAM	H	Outer_Full	96.985	100.800	PASS
N78-3450-3550	30	100	CP-256QAM	H	Outer_Full	97.162	100.800	PASS



Unless otherwise agreed in writing, this document is issued by the Company subject to its General Conditions of Service printed overleaf, available on request or accessible at <http://www.sgs.com/en/Terms-and-Conditions.aspx> and, for electronic format documents, subject to Terms and Conditions for Electronic Documents at <http://www.sgs.com/en/Terms-and-Conditions/Terms-e-Documents.aspx>. Attention is drawn to the limitation of liability, indemnification and jurisdiction issues defined therein. Any holder of this document is advised that information contained hereon reflects the Company's findings at the time of its intervention only and within the limits of Client's instructions, if any. The Company's sole responsibility is to its Client and this document does not exonerate parties to a transaction from exercising all their rights and obligations under the transaction documents. This document cannot be reproduced except in full, without prior written approval of the Company. Any unauthorized alteration, forgery or falsification of the content or appearance of this document is unlawful and offenders may be prosecuted to the fullest extent of the law. Unless otherwise stated the results shown in this test report refer only to the sample(s) tested and such sample(s) are retained for 30 days only.

Attention: To check the authenticity of testing/inspection report & certificate, please contact us at telephone: (86-755) 8307 1443, or email: CN.Doccheck@sgs.com

South of No. 6 Plant, No. 1, Runsheng Road, Suzhou Industrial Park, Suzhou Area, China (Jiangsu) Pilot Free Trade Zone 215000 t (86-512) 62992980 www.sgs.com.cn
 中国·苏州·中国(江苏)自由贸易试验区苏州片区苏州工业园区海胜路1号的6号厂房南楼 邮编: 215000 t (86-512) 62992980 sgs.china@sgs.com



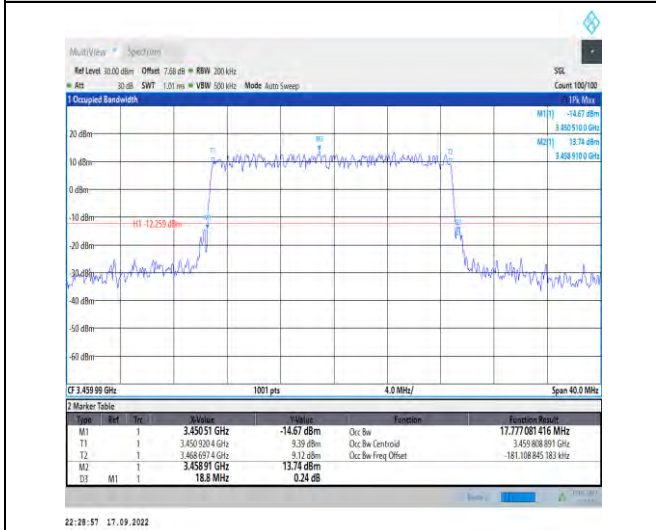
Test Graphs



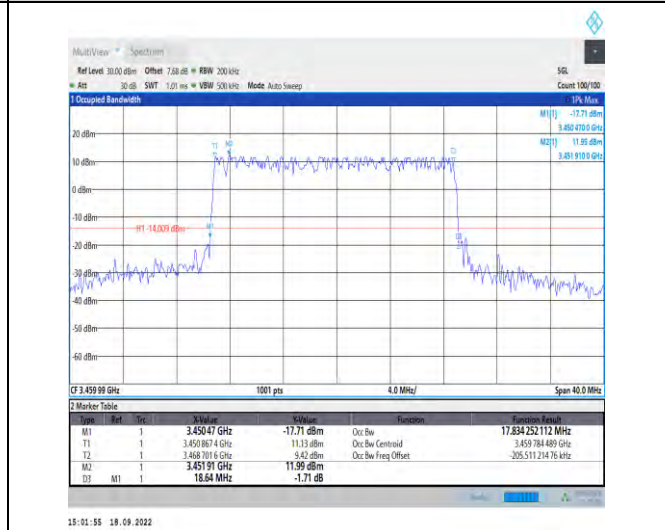
1-N78-3450-3550--30-20-L-1-DFT-QPSK-Outer_Full-50@0-Ant1-17.824-18.800-\leq-20



1-N78-3450-3550--30-20-L-2-DFT-PI2BPSK-Outer_Full-50@0-Ant1-17.872-18.920-\leq-20



1-N78-3450-3550--30-20-L-3-DFT-16QAM-Outer_Full-50@0-Ant1-17.777-18.800-\leq-20



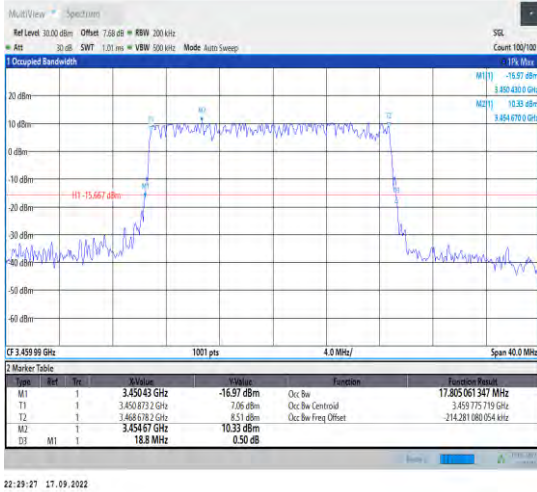
1-N78-3450-3550--30-20-L-4-DFT-64QAM-Outer_Full-50@0-Ant1-17.834-18.640-\leq-20



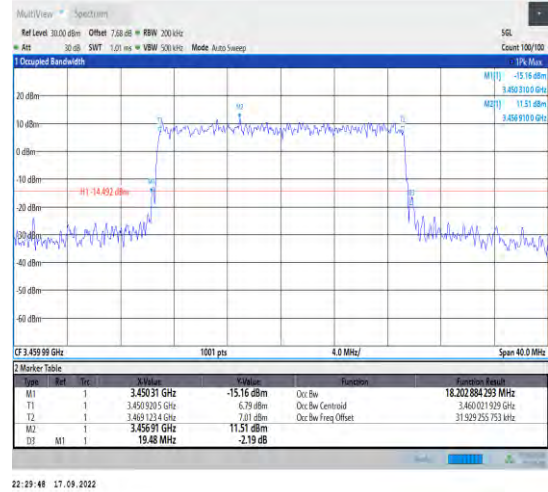
Unless otherwise agreed in writing, this document is issued by the Company subject to its General Conditions of Service printed overleaf, available on request or accessible at <http://www.sgs.com/en/Terms-and-Conditions.aspx> and, for electronic format documents, subject to Terms and Conditions for Electronic Documents at <http://www.sgs.com/en/Terms-and-Conditions/Terms-e-Documents.aspx>. Attention is drawn to the limitation of liability, indemnification and jurisdiction issues defined therein. Any holder of this document is advised that information contained hereon reflects the Company's findings at the time of its intervention only and within the limits of Client's instructions, if any. The Company's sole responsibility is to its Client and this document does not exonerate parties to a transaction from exercising all their rights and obligations under the transaction documents. This document cannot be reproduced except in full, without prior written approval of the Company. Any unauthorized alteration, forgery or falsification of the content or appearance of this document is unlawful and offenders may be prosecuted to the fullest extent of the law. Unless otherwise stated the results shown in this test report refer only to the sample(s) tested and such sample(s) are retained for 30 days only.

Attention: To check the authenticity of testing/inspection report & certificate, please contact us at telephone: (86-755) 83071443, or email: CN.Doccheck@sgs.com

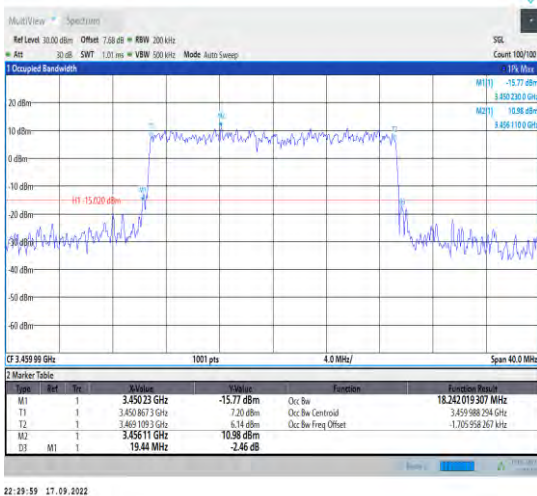
South of No. 6 Plant, No. 1, Pansheng Road, Suzhou Industrial Park, Suzhou Area, China (Jiangsu) Pilot Free Trade Zone 215000 t (86-512) 62992980 www.sgs.com.cn
中国·苏州·中国(江苏)自由贸易试验区苏州片区苏州工业园区海陆路1号的6号厂房南楼 邮编: 215000 t (86-512) 62992980 sgs.china@sgs.com



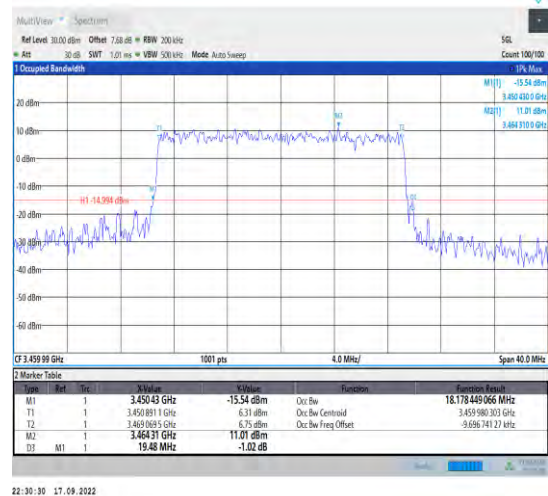
1-N78-3450-3550--30-20-L-5-DFT-256QAM-Outer_Full-50@0-Ant1-17.805-18.800-≤ 20-



1-N78-3450-3550--30-20-L-6-CP-QPSK-Outer_Full-51@0-Ant1-18.203-19.480-≤ 20-



1-N78-3450-3550--30-20-L-7-CP-16QAM-Outer_Full-51@0-Ant1-18.242-19.440-≤ 20-



1-N78-3450-3550--30-20-L-8-CP-64QAM-Outer_Full-51@0-Ant1-18.178-19.480-≤ 20-

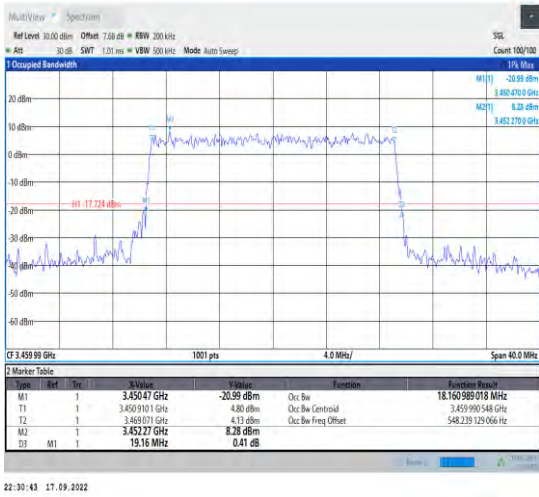


Unless otherwise agreed in writing, this document is issued by the Company subject to its General Conditions of Service printed overleaf, available on request or accessible at <http://www.sgs.com/en/Terms-and-Conditions.aspx> and, for electronic format documents, subject to Terms and Conditions for Electronic Documents at <http://www.sgs.com/en/Terms-and-Conditions/Terms-e-Documents.aspx>. Attention is drawn to the limitation of liability, indemnification and jurisdiction issues defined therein. Any holder of this document is advised that information contained hereon reflects the Company's findings at the time of its intervention only and within the limits of Client's instructions, if any. The Company's sole responsibility is to its Client and this document does not exonerate parties to a transaction from exercising all their rights and obligations under the transaction documents. This document cannot be reproduced except in full, without prior written approval of the Company. Any unauthorized alteration, forgery or falsification of the content or appearance of this document is unlawful and offenders may be prosecuted to the fullest extent of the law. Unless otherwise stated the results shown in this test report refer only to the sample(s) tested and such sample(s) are retained for 30 days only.

Attention: To check the authenticity of testing/inspection report & certificate, please contact us at telephone: (86-755) 8307 1443, or email: CN.Doccheck@sgs.com

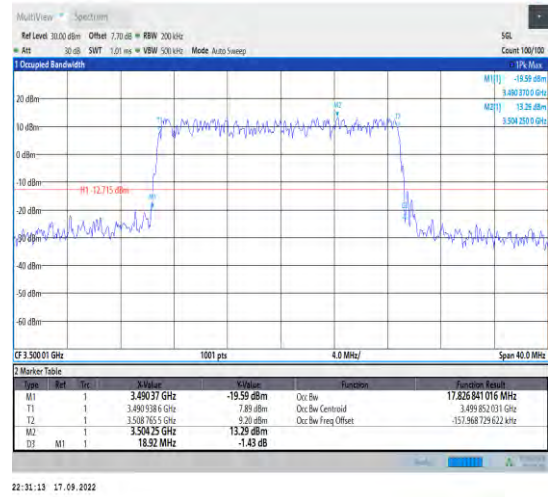
South of No. 6 Plant, No. 1, Pansheng Road, Suzhou Industrial Park, Suzhou Area, China (Jiangsu) Pilot Free Trade Zone 215000
 中国·苏州·中国(江苏)自由贸易试验区苏州片区苏州工业园区海胜路1号的6号厂房南面 邮编: 215000

t (86-512) 62992980 www.sgs.com.cn
 t (86-512) 62992980 sgs.china@sgs.com



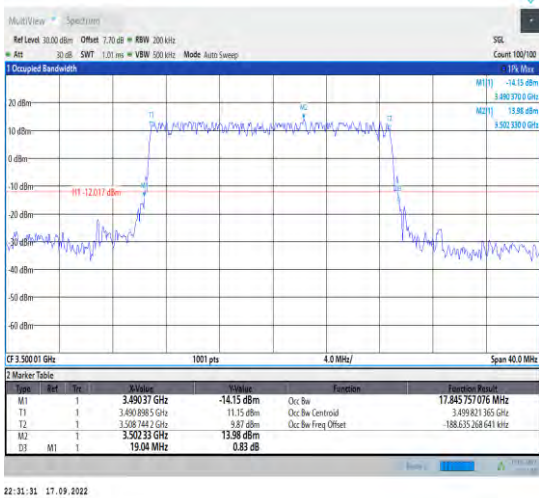
22:30:43 17.09.2022

1-N78-3450-3550--30-20-L-9-CP-256QAM-Outer_Fu
II-51@0-Ant1-18.161-19.160-≤20-



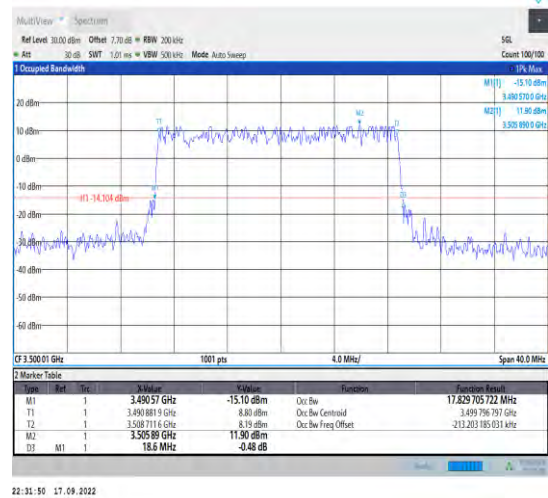
22:31:13 17.09.2022

1-N78-3450-3550--30-20-M-1-DFT-QPSK-Outer_Full
-50@0-Ant1-17.827-18.920-≤20-



22:31:31 17.09.2022

1-N78-3450-3550--30-20-M-2-DFT-PI2BPSK-Outer_Full
Full-50@0-Ant1-17.846-19.040-≤20-



22:31:50 17.09.2022

1-N78-3450-3550--30-20-M-3-DFT-16QAM-Outer_Full
ull-50@0-Ant1-17.83-18.600-≤20-

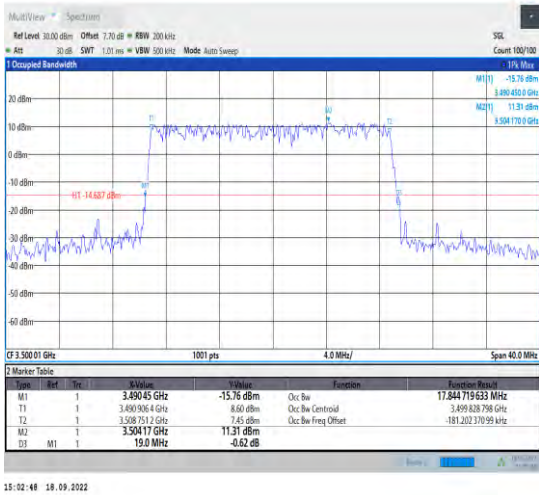


Unless otherwise agreed in writing, this document is issued by the Company subject to its General Conditions of Service printed overleaf, available on request or accessible at <http://www.sgs.com/en/Terms-and-Conditions.aspx> and, for electronic format documents, subject to Terms and Conditions for Electronic Documents at <http://www.sgs.com/en/Terms-and-Conditions/Terms-e-Documents.aspx>. Attention is drawn to the limitation of liability, indemnification and jurisdiction issues defined therein. Any holder of this document is advised that information contained hereon reflects the Company's findings at the time of its intervention only and within the limits of Client's instructions, if any. The Company's sole responsibility is to its Client and this document does not exonerate parties to a transaction from exercising all their rights and obligations under the transaction documents. This document cannot be reproduced except in full, without prior written approval of the Company. Any unauthorized alteration, forgery or falsification of the content or appearance of this document is unlawful and offenders may be prosecuted to the fullest extent of the law. Unless otherwise stated the results shown in this test report refer only to the sample(s) tested and such sample(s) are retained for 30 days only.

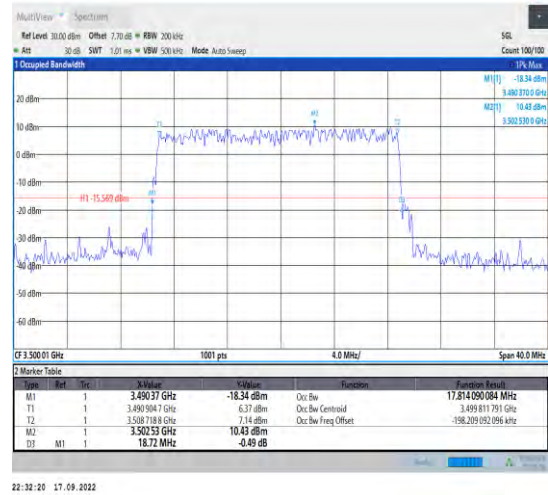
Attention: To check the authenticity of testing/inspection report & certificate, please contact us at telephone: (86-755) 8307 1443, or email: CN.Doccheck@sgs.com

South of No. 6 Plant, No. 1, Pansheng Road, Suzhou Industrial Park, Suzhou Area, China (Jiangsu) Pilot Free Trade Zone 215000
中国·苏州·中国(江苏)自由贸易试验区苏州片区苏州工业园区海胜路1号的6号厂房南座 邮编: 215000

t (86-512) 62992980 www.sgs.com.cn
t (86-512) 62992980 sgs.china@sgs.com



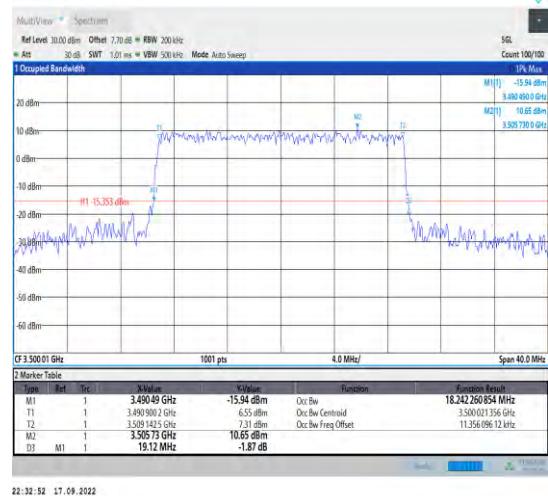
1-N78-3450-3550--30-20-M-4-DFT-64QAM-Outer_Full-50@0-Ant1-17.845-19.000-≤20-



1-N78-3450-3550--30-20-M-5-DFT-256QAM-Outer_Full-50@0-Ant1-17.814-18.720-≤20-



1-N78-3450-3550--30-20-M-6-CP-QPSK-Outer_Full-51@0-Ant1-18.118-19.320-≤20-



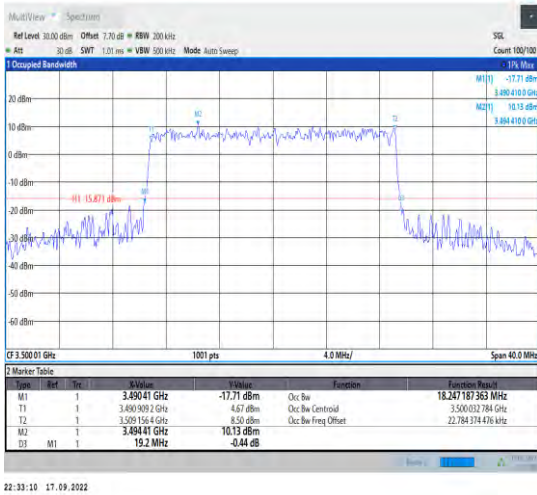
1-N78-3450-3550--30-20-M-7-CP-16QAM-Outer_Full-51@0-Ant1-18.242-19.120-≤20-



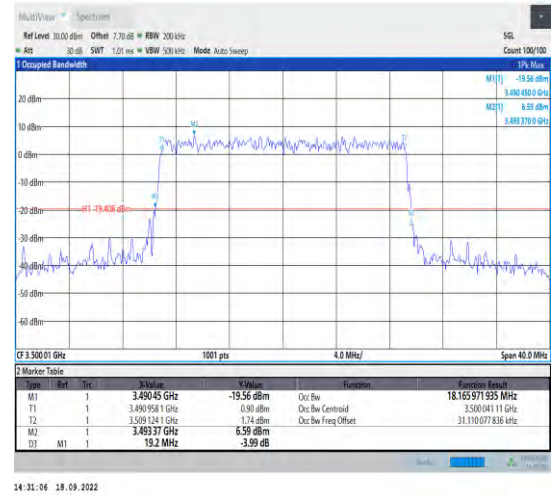
Unless otherwise agreed in writing, this document is issued by the Company subject to its General Conditions of Service printed overleaf, available on request or accessible at <http://www.sgs.com/en/Terms-and-Conditions.aspx> and, for electronic format documents, subject to Terms and Conditions for Electronic Documents at <http://www.sgs.com/en/Terms-and-Conditions/Terms-e-Documents.aspx>. Attention is drawn to the limitation of liability, indemnification and jurisdiction issues defined therein. Any holder of this document is advised that information contained hereon reflects the Company's findings at the time of its intervention only and within the limits of Client's instructions, if any. The Company's sole responsibility is to its Client and this document does not exonerate parties to a transaction from exercising all their rights and obligations under the transaction documents. This document cannot be reproduced except in full, without prior written approval of the Company. Any unauthorized alteration, forgery or falsification of the content or appearance of this document is unlawful and offenders may be prosecuted to the fullest extent of the law. Unless otherwise stated the results shown in this test report refer only to the sample(s) tested and such sample(s) are retained for 30 days only.

Attention: To check the authenticity of testing/inspection report & certificate, please contact us at telephone: (86-755) 83071443, or email: CN.Doccheck@sgs.com

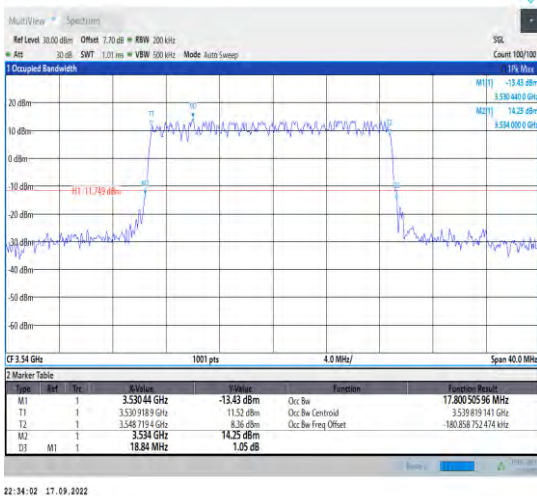
South of No. 6 Plant, No. 1, Punsheng Road, Suzhou Industrial Park, Suzhou Area, China (Jiangsu) Pilot Free Trade Zone 215000 t (86-512) 62992980 www.sgs.com.cn
 中国·苏州·中国(江苏)自由贸易试验区苏州片区苏州工业园区海胜路1号的6号厂房南座 邮编: 215000 t (86-512) 62992980 sgs.china@sgs.com



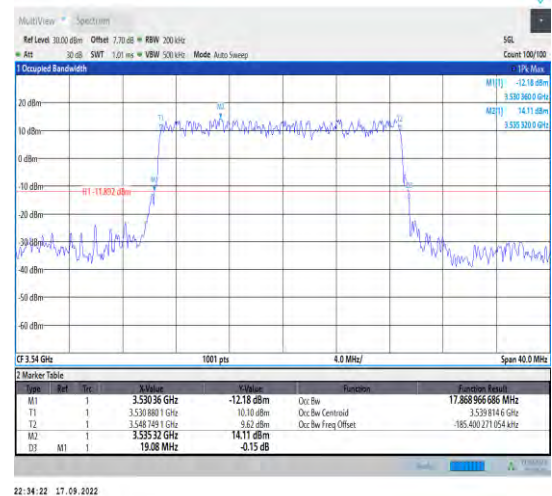
1-N78-3450-3550--30-20-M-8-CP-64QAM-Outer_Full-51@0-Ant1-18.247-19.200-<20-



1-N78-3450-3550--30-20-M-9-CP-256QAM-Outer_Full-51@0-Ant1-18.166-19.200-<20-



1-N78-3450-3550--30-20-H-1-DFT-QPSK-Outer_Full-50@0-Ant1-17.801-18.840-<20-



1-N78-3450-3550--30-20-H-2-DFT-PI2BPSK-Outer_Full-50@0-Ant1-17.869-19.080-<20-

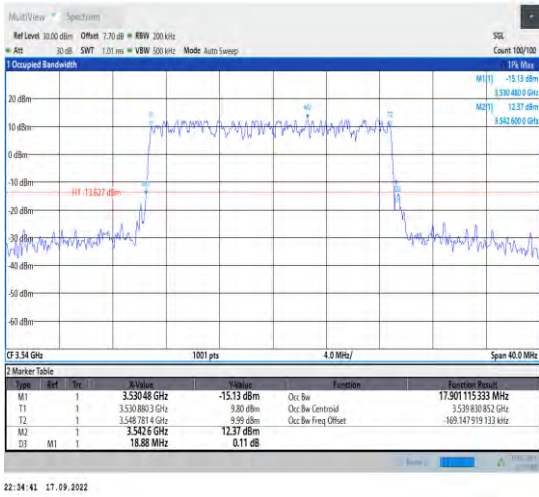


Unless otherwise agreed in writing, this document is issued by the Company subject to its General Conditions of Service printed overleaf, available on request or accessible at <http://www.sgs.com/en/Terms-and-Conditions.aspx> and, for electronic format documents, subject to Terms and Conditions for Electronic Documents at <http://www.sgs.com/en/Terms-and-Conditions/Terms-e-Documents.aspx>. Attention is drawn to the limitation of liability, indemnification and jurisdiction issues defined therein. Any holder of this document is advised that information contained hereon reflects the Company's findings at the time of its intervention only and within the limits of Client's instructions, if any. The Company's sole responsibility is to its Client and this document does not exonerate parties to a transaction from exercising all their rights and obligations under the transaction documents. This document cannot be reproduced except in full, without prior written approval of the Company. Any unauthorized alteration, forgery or falsification of the content or appearance of this document is unlawful and offenders may be prosecuted to the fullest extent of the law. Unless otherwise stated the results shown in this test report refer only to the sample(s) tested and such sample(s) are retained for 30 days only.

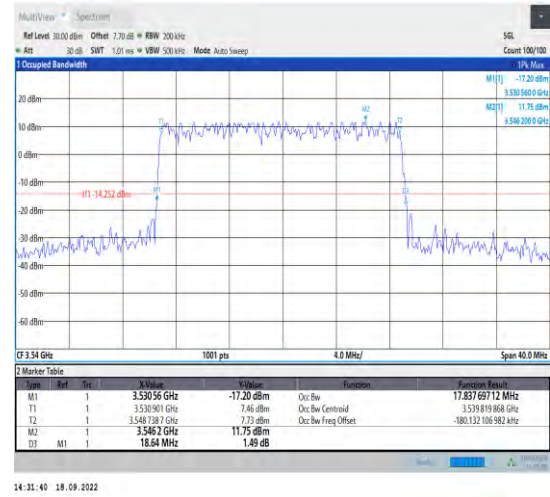
Attention: To check the authenticity of testing/inspection report & certificate, please contact us at telephone: (86-755) 83071443, or email: CN.Doccheck@sgs.com

South of No. 6 Plant, No. 1, Pansheng Road, Suzhou Industrial Park, Suzhou Area, China (Jiangsu) Pilot Free Trade Zone 215000
 中国·苏州·中国(江苏)自由贸易试验区苏州片区苏州工业园区海胜路1号的6号厂房南面 邮编: 215000

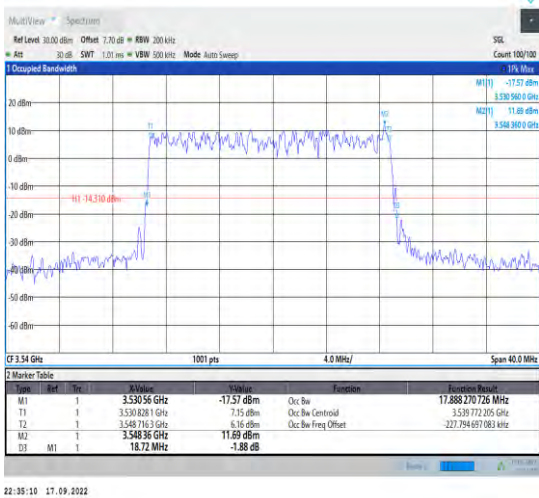
t (86-512) 62992980 www.sgs.com.cn
 t (86-512) 62992980 sgs.china@sgs.com



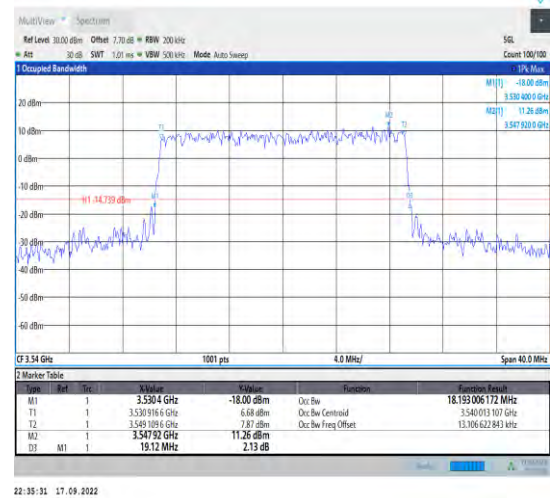
1-N78-3450-3550--30-20-H-3-DFT-16QAM-Outer_Fu
II-50@0-Ant1-17.901-18.880-<20-



1-N78-3450-3550--30-20-H-4-DFT-64QAM-Outer_Fu
II-50@0-Ant1-17.838-18.640-<20-



1-N78-3450-3550--30-20-H-5-DFT-256QAM-Outer_F
ull-50@0-Ant1-17.888-18.720-<20-



1-N78-3450-3550--30-20-H-6-CP-QPSK-Outer_Full-
51@0-Ant1-18.193-19.120-<20-



Unless otherwise agreed in writing, this document is issued by the Company subject to its General Conditions of Service printed overleaf, available on request or accessible at <http://www.sgs.com/en/Terms-and-Conditions.aspx> and, for electronic format documents, subject to Terms and Conditions for Electronic Documents at <http://www.sgs.com/en/Terms-and-Conditions/Terms-e-Documents.aspx>. Attention is drawn to the limitation of liability, indemnification and jurisdiction issues defined therein. Any holder of this document is advised that information contained hereon reflects the Company's findings at the time of its intervention only and within the limits of Client's instructions, if any. The Company's sole responsibility is to its Client and this document does not exonerate parties to a transaction from exercising all their rights and obligations under the transaction documents. This document cannot be reproduced except in full, without prior written approval of the Company. Any unauthorized alteration, forgery or falsification of the content or appearance of this document is unlawful and offenders may be prosecuted to the fullest extent of the law. Unless otherwise stated the results shown in this test report refer only to the sample(s) tested and such sample(s) are retained for 30 days only.

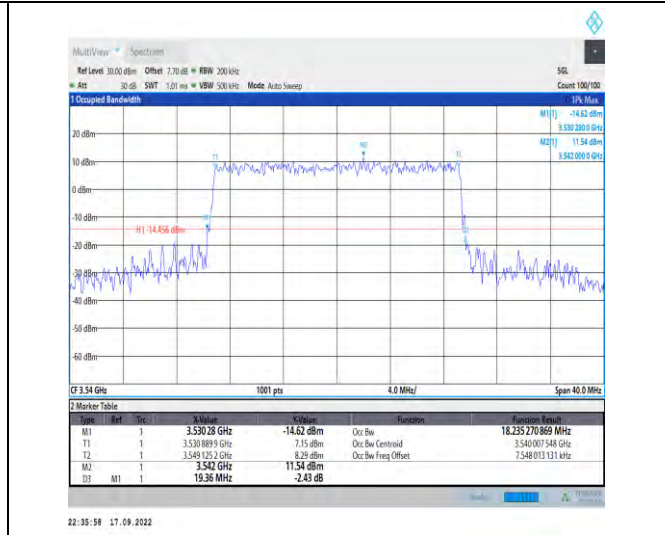
Attention: To check the authenticity of testing/inspection report & certificate, please contact us at telephone: (86-755) 83071443, or email: CN.Doccheck@sgs.com

South of No. 6 Plant, No. 1, Pansheng Road, Suzhou Industrial Park, Suzhou Area, China (Jiangsu) Pilot Free Trade Zone 215000
中国·苏州·中国(江苏)自由贸易试验区苏州片区苏州工业园区海胜路1号的1号厂房南座 邮编: 215000

t (86-512) 62992980 www.sgs.com.cn
t (86-512) 62992980 sgs.china@sgs.com



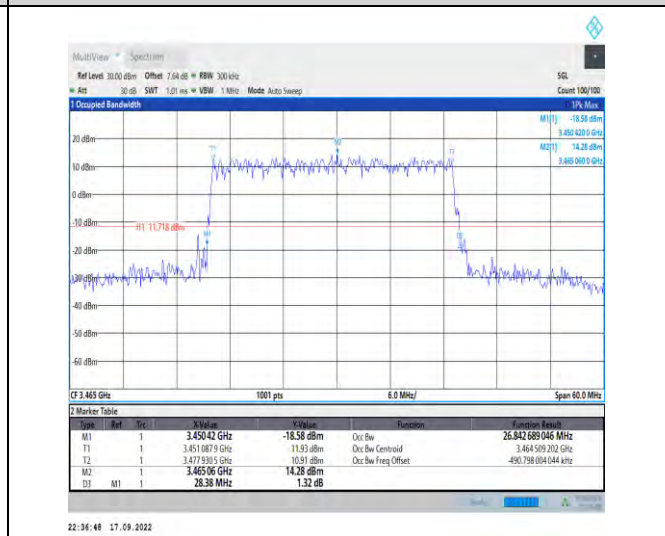
1-N78-3450-3550--30-20-H-7-CP-16QAM-Outer_Full
-51@0-Ant1-18.224-19.320-<20-



1-N78-3450-3550--30-20-H-8-CP-64QAM-Outer_Full
-51@0-Ant1-18.235-19.360-<20-



1-N78-3450-3550--30-20-H-9-CP-256QAM-Outer_F
ull-51@0-Ant1-18.133-19.400-<20-



1-N78-3450-3550--30-30-L-1-DFT-QPSK-Outer_Full-
75@0-Ant1-26.843-28.380-<30-

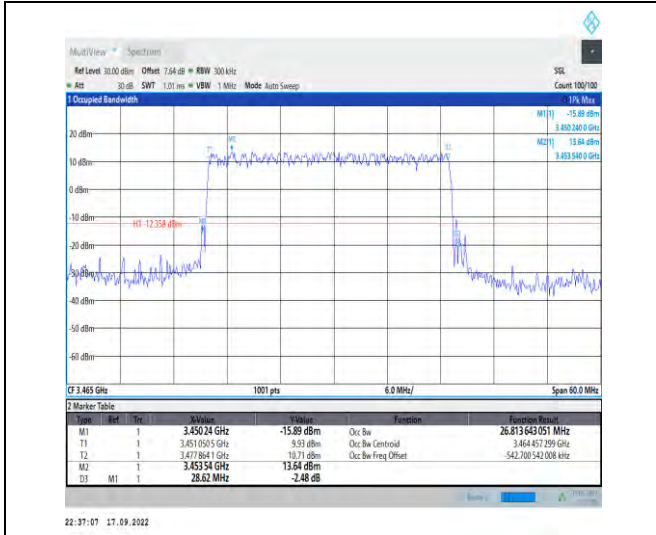


Unless otherwise agreed in writing, this document is issued by the Company subject to its General Conditions of Service printed overleaf, available on request or accessible at <http://www.sgs.com/en/Terms-and-Conditions.aspx> and, for electronic format documents, subject to Terms and Conditions for Electronic Documents at <http://www.sgs.com/en/Terms-and-Conditions/Terms-e-Documents.aspx>. Attention is drawn to the limitation of liability, indemnification and jurisdiction issues defined therein. Any holder of this document is advised that information contained hereon reflects the Company's findings at the time of its intervention only and within the limits of Client's instructions, if any. The Company's sole responsibility is to its Client and this document does not exonerate parties to a transaction from exercising all their rights and obligations under the transaction documents. This document cannot be reproduced except in full, without prior written approval of the Company. Any unauthorized alteration, forgery or falsification of the content or appearance of this document is unlawful and offenders may be prosecuted to the fullest extent of the law. Unless otherwise stated the results shown in this test report refer only to the sample(s) tested and such sample(s) are retained for 30 days only.

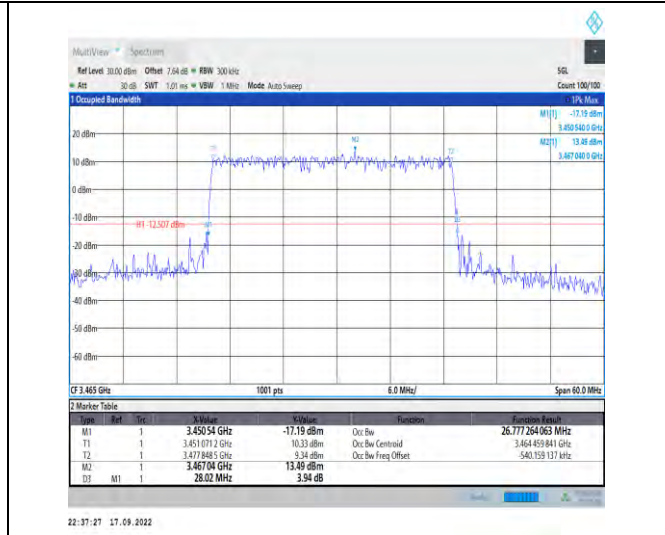
Attention: To check the authenticity of testing/inspection report & certificate, please contact us at telephone: (86-755) 8307 1443, or email: CN.Doccheck@sgs.com

South of No. 6 Plant, No. 1, Pansheng Road, Suzhou Industrial Park, Suzhou Area, China (Jiangsu) Pilot Free Trade Zone 215000
中国·苏州·中国(江苏)自由贸易试验区苏州片区苏州工业园区海胜路1号的6号厂房南楼 邮编: 215000

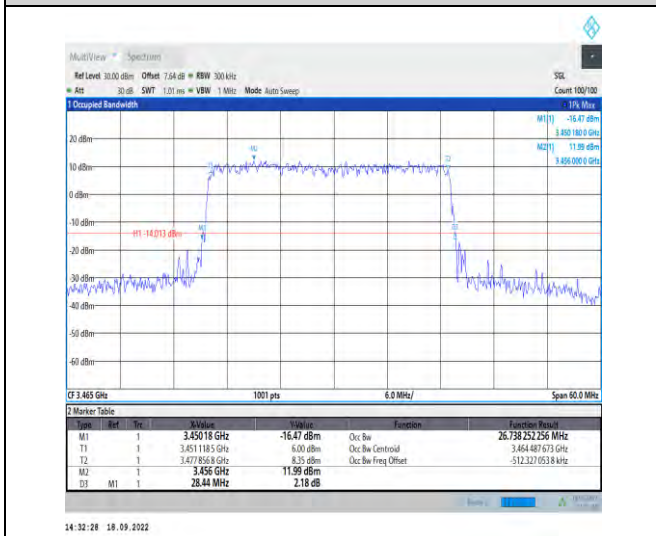
t (86-512) 62992980 www.sgs.com.cn
t (86-512) 62992980 sgs.china@sgs.com



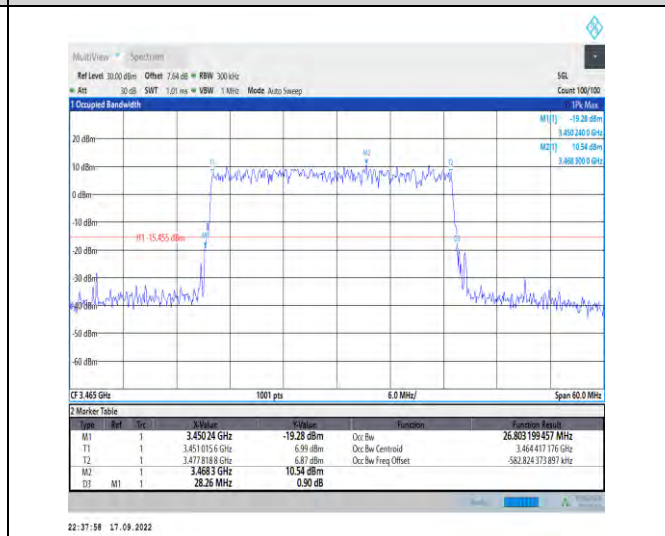
1-N78-3450-3550--30-30-L-2-DFT-PI2BPSK-Outer_Full-75@0-Ant1-26.814-28.620-≤30-



1-N78-3450-3550--30-30-L-3-DFT-16QAM-Outer_Full-75@0-Ant1-26.777-28.020-≤30-



1-N78-3450-3550--30-30-L-4-DFT-64QAM-Outer_Full-75@0-Ant1-26.738-28.440-≤30-



1-N78-3450-3550--30-30-L-5-DFT-256QAM-Outer_Full-75@0-Ant1-26.803-28.260-≤30-

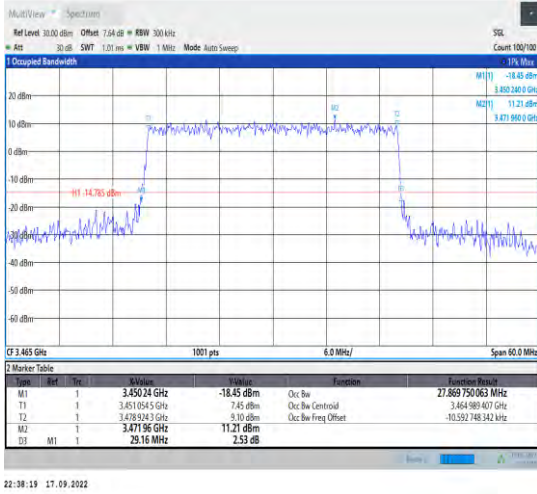


Unless otherwise agreed in writing, this document is issued by the Company subject to its General Conditions of Service provided overleaf, available on request or accessible at <http://www.sgs.com/en/Terms-and-Conditions.aspx> and, for electronic format documents, subject to Terms and Conditions for Electronic Documents at <http://www.sgs.com/en/Terms-and-Conditions/Terms-e-Documents.aspx>.

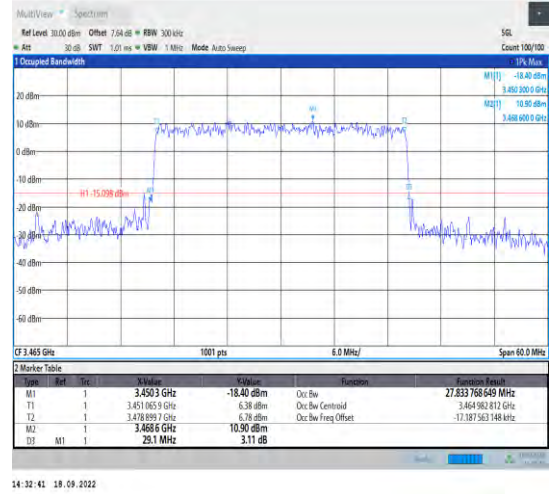
Attention is drawn to the limitation of liability, indemnification and jurisdiction issues defined therein. Any holder of this document is advised that information contained hereon reflects the Company's findings at the time of its intervention only and within the limits of Client's instructions, if any. The Company's sole responsibility is to its Client and this document does not exonerate parties to a transaction from exercising all their rights and obligations under the transaction documents. This document cannot be reproduced except in full, without prior written approval of the Company. Any unauthorized alteration, forgery or falsification of the content or appearance of this document is unlawful and offenders may be prosecuted to the fullest extent of the law. Unless otherwise stated the results shown in this test report refer only to the sample(s) tested and such sample(s) are retained for 30 days only.

Attention: To check the authenticity of testing/inspection report & certificate, please contact us at telephone: (86-755) 83071443, or email: CN.Doccheck@sgs.com

South of No. 6 Plant, No. 1, Pansheng Road, Suzhou Industrial Park, Suzhou Area, China (Jiangsu) Pilot Free Trade Zone 215000 t (86-512) 62992980 www.sgs.com.cn
中国·苏州·中国(江苏)自由贸易试验区苏州片区苏州工业园区海胜路1号的6号厂房南座 邮编: 215000 t (86-512) 62992980 sgs.china@sgs.com



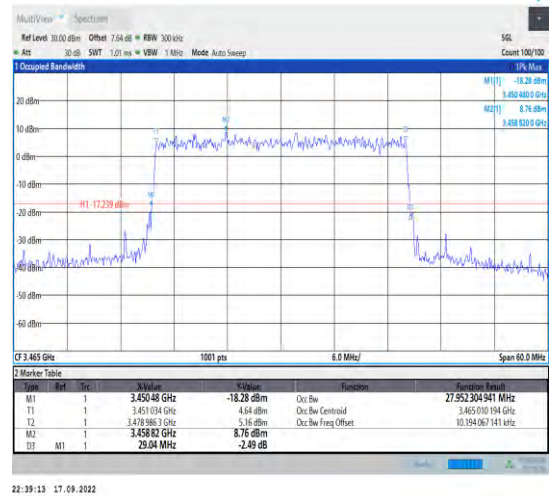
1-N78-3450-3550--30-30-L-6-CP-QPSK-Outer_Full-78@0-Ant1-27.87-29.160-<30-



1-N78-3450-3550--30-30-L-7-CP-16QAM-Outer_Full-78@0-Ant1-27.834-29.100-<30-



1-N78-3450-3550--30-30-L-8-CP-64QAM-Outer_Full-78@0-Ant1-27.808-29.700-<30-



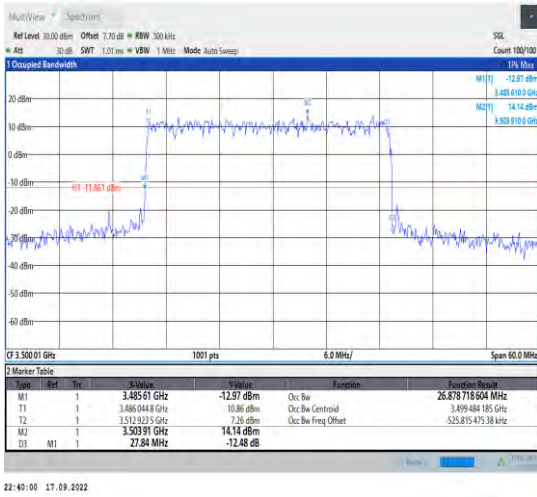
1-N78-3450-3550--30-30-L-9-CP-256QAM-Outer_Fu ll-78@0-Ant1-27.952-29.040-<30-



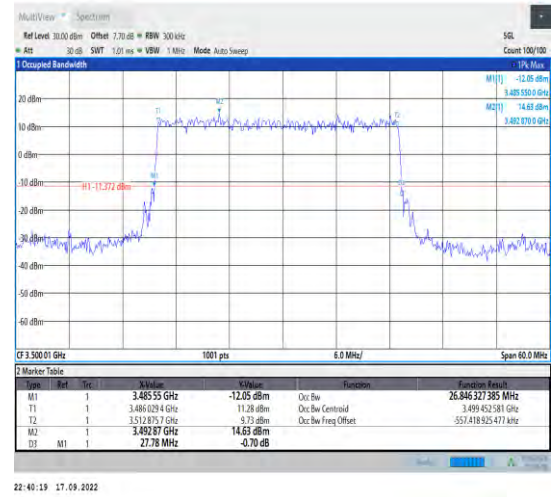
Unless otherwise agreed in writing, this document is issued by the Company subject to its General Conditions of Service printed overleaf, available on request or accessible at <http://www.sgs.com/en/Terms-and-Conditions.aspx> and, for electronic format documents, subject to Terms and Conditions for Electronic Documents at <http://www.sgs.com/en/Terms-and-Conditions/Terms-e-Documents.aspx>. Attention is drawn to the limitation of liability, indemnification and jurisdiction issues defined therein. Any holder of this document is advised that information contained hereon reflects the Company's findings at the time of its intervention only and within the limits of Client's instructions, if any. The Company's sole responsibility is to its Client and this document does not exonerate parties to a transaction from exercising all their rights and obligations under the transaction documents. This document cannot be reproduced except in full, without prior written approval of the Company. Any unauthorized alteration, forgery or falsification of the content or appearance of this document is unlawful and offenders may be prosecuted to the fullest extent of the law. Unless otherwise stated the results shown in this test report refer only to the sample(s) tested and such sample(s) are retained for 30 days only. Attention: To check the authenticity of testing/inspection report & certificate, please contact us at telephone: (86-755) 8307 1443, or email: CN.Doccheck@sgs.com

South of No. 6 Plant, No. 1, Pansheng Road, Suzhou Industrial Park, Suzhou Area, China (Jiangsu) Pilot Free Trade Zone 215000
 中国·苏州·中国(江苏)自由贸易试验区苏州片区苏州工业园区海胜路1号厂房南座 邮编: 215000

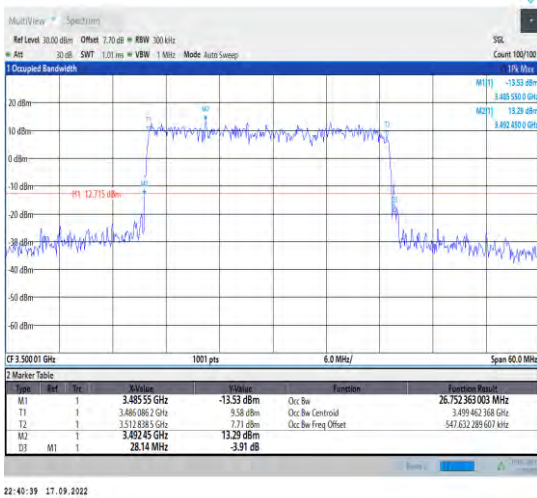
t (86-512) 62992980 www.sgs.com.cn
 t (86-512) 62992980 sgs.china@sgs.com



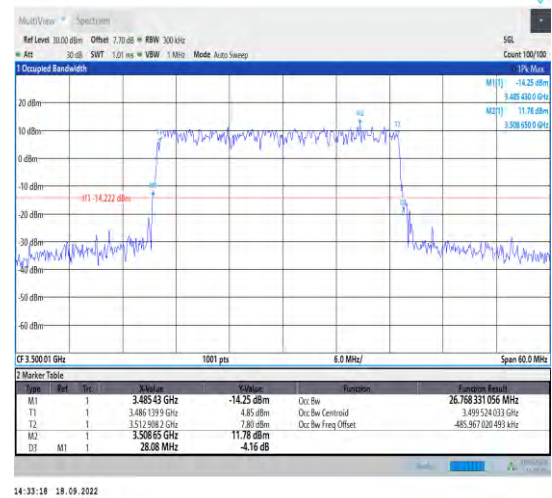
1-N78-3450-3550--30-30-M-1-DFT-QPSK-Outer_Full
-75@0-Ant1-26.879-27.840-<30-



1-N78-3450-3550--30-30-M-2-DFT-PI2BPSK-Outer_Full
Full-75@0-Ant1-26.846-27.780-<30-



1-N78-3450-3550--30-30-M-3-DFT-16QAM-Outer_Full
ull-75@0-Ant1-26.752-28.140-<30-



1-N78-3450-3550--30-30-M-4-DFT-64QAM-Outer_Full
ull-75@0-Ant1-26.768-28.080-<30-

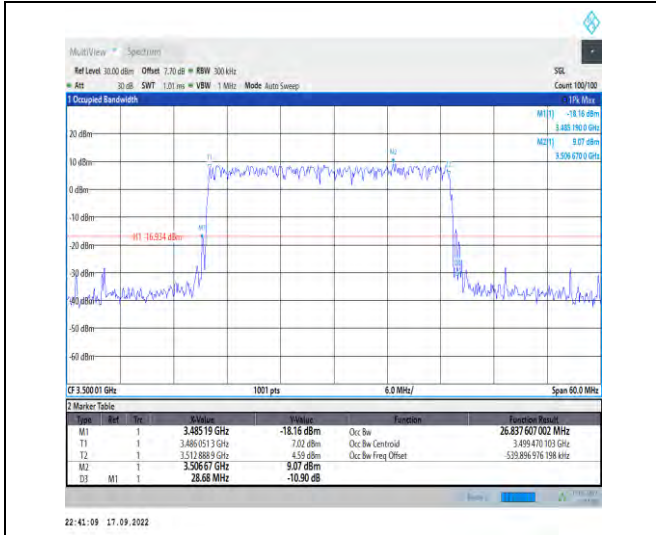


Unless otherwise agreed in writing, this document is issued by the Company subject to its General Conditions of Service printed overleaf, available on request or accessible at <http://www.sgs.com/en/Terms-and-Conditions.aspx> and, for electronic format documents, subject to Terms and Conditions for Electronic Documents at <http://www.sgs.com/en/Terms-and-Conditions/Terms-e-Documents.aspx>. Attention is drawn to the limitation of liability, indemnification and jurisdiction issues defined therein. Any holder of this document is advised that information contained hereon reflects the Company's findings at the time of its intervention only and within the limits of Client's instructions, if any. The Company's sole responsibility is to its Client and this document does not exonerate parties to a transaction from exercising all their rights and obligations under the transaction documents. This document cannot be reproduced except in full, without prior written approval of the Company. Any unauthorized alteration, forgery or falsification of the content or appearance of this document is unlawful and offenders may be prosecuted to the fullest extent of the law. Unless otherwise stated the results shown in this test report refer only to the sample(s) tested and such sample(s) are retained for 30 days only.

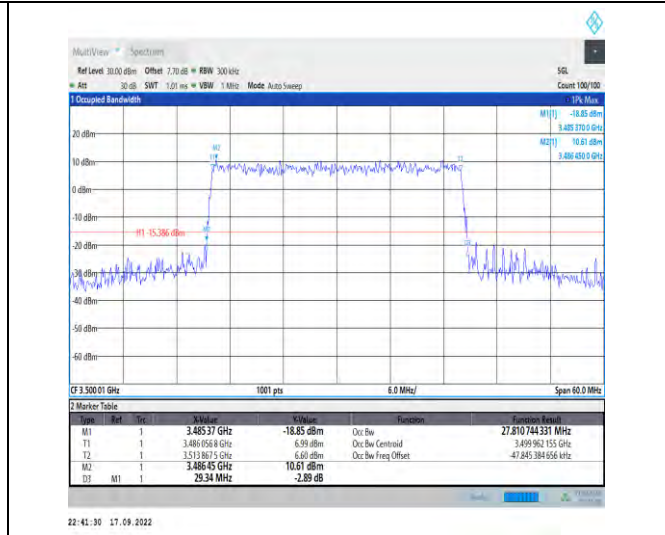
Attention: To check the authenticity of testing/inspection report & certificate, please contact us at telephone: (86-755) 8307 1443, or email: CN.Doccheck@sgs.com

South of No. 6 Plant, No. 1, Pansheng Road, Suzhou Industrial Park, Suzhou Area, China (Jiangsu) Pilot Free Trade Zone 215000
中国·苏州·中国(江苏)自由贸易试验区苏州片区苏州工业园区海陆路1号的6号厂房南楼 邮编: 215000

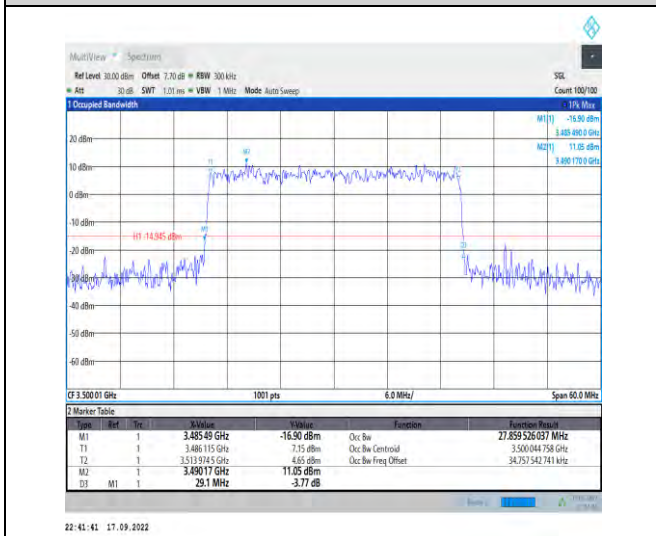
t (86-512) 62992980 www.sgs.com.cn
t (86-512) 62992980 sgs.china@sgs.com



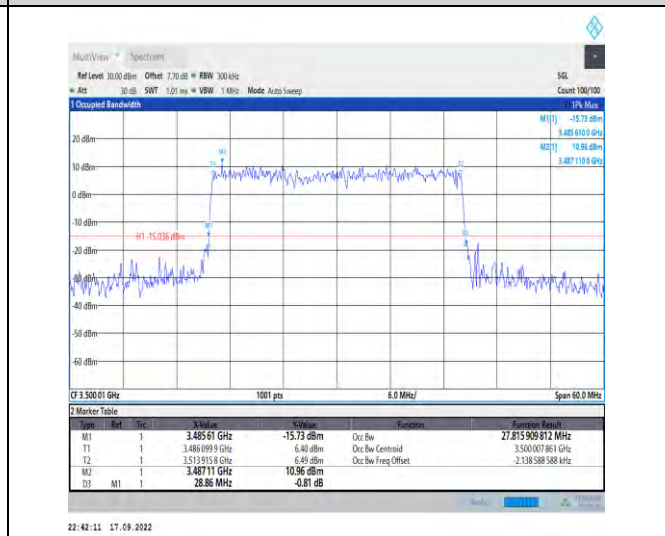
1-N78-3450-3550--30-30-M-5-DFT-256QAM-Outer_Full-75@0-Ant1-26.838-28.680-≤30-



1-N78-3450-3550--30-30-M-6-CP-QPSK-Outer_Full-78@0-Ant1-27.811-29.340-≤30-

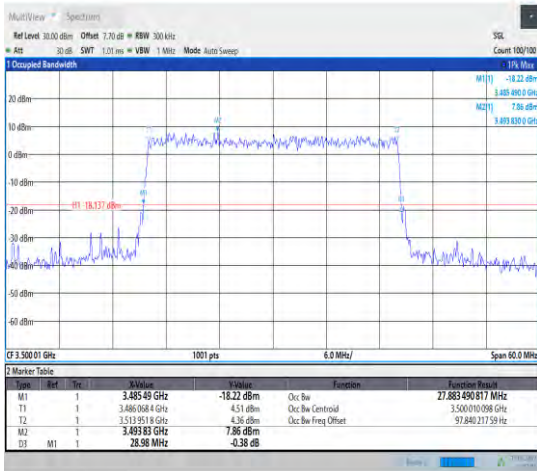


1-N78-3450-3550--30-30-M-7-CP-16QAM-Outer_Ful-1-78@0-Ant1-27.86-29.100-≤30-



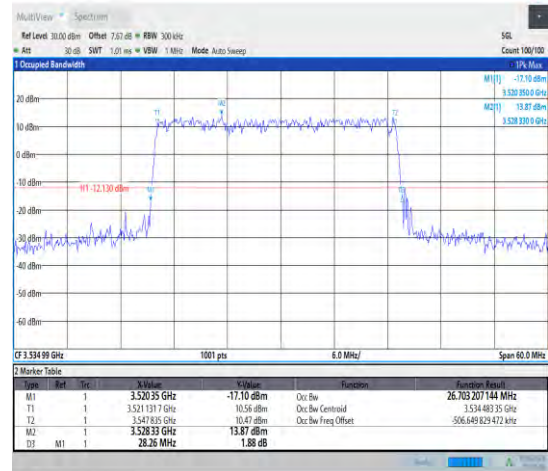
1-N78-3450-3550--30-30-M-8-CP-64QAM-Outer_Full-78@0-Ant1-27.816-28.860-≤30-





22:42:24 17.09.2022

1-N78-3450-3550--30-30-M-9-CP-256QAM-Outer_Full-78@0-Ant1-27.883-28.980-≤30-



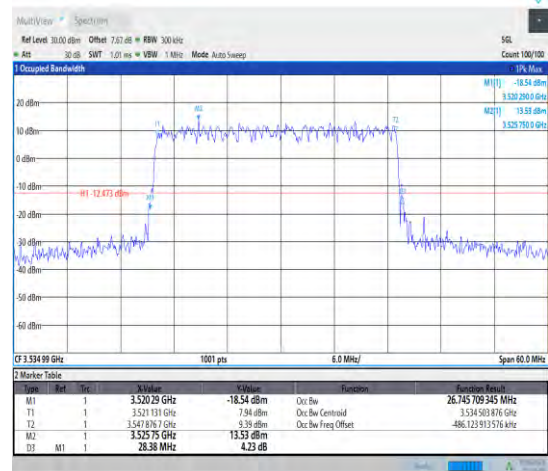
22:43:06 17.09.2022

1-N78-3450-3550--30-30-H-1-DFT-QPSK-Outer_Full-75@0-Ant1-26.703-28.260-≤30-



22:43:26 17.09.2022

1-N78-3450-3550--30-30-H-2-DFT-PI2BPSK-Outer_Full-75@0-Ant1-26.671-28.560-≤30-



22:43:46 17.09.2022

1-N78-3450-3550--30-30-H-3-DFT-16QAM-Outer_Full-75@0-Ant1-26.746-28.380-≤30-

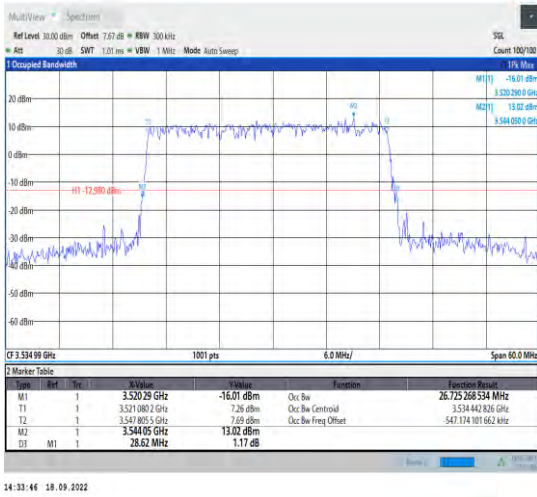


Unless otherwise agreed in writing, this document is issued by the Company subject to its General Conditions of Service printed overleaf, available on request or accessible at <http://www.sgs.com/en/Terms-and-Conditions.aspx> and, for electronic format documents, subject to Terms and Conditions for Electronic Documents at <http://www.sgs.com/en/Terms-and-Conditions/Terms-e-Documents.aspx>. Attention is drawn to the limitation of liability, indemnification and jurisdiction issues defined therein. Any holder of this document is advised that information contained hereon reflects the Company's findings at the time of its intervention only and within the limits of Client's instructions, if any. The Company's sole responsibility is to its Client and this document does not exonerate parties to a transaction from exercising all their rights and obligations under the transaction documents. This document cannot be reproduced except in full, without prior written approval of the Company. Any unauthorized alteration, forgery or falsification of the content or appearance of this document is unlawful and offenders may be prosecuted to the fullest extent of the law. Unless otherwise stated the results shown in this test report refer only to the sample(s) tested and such sample(s) are retained for 30 days only.

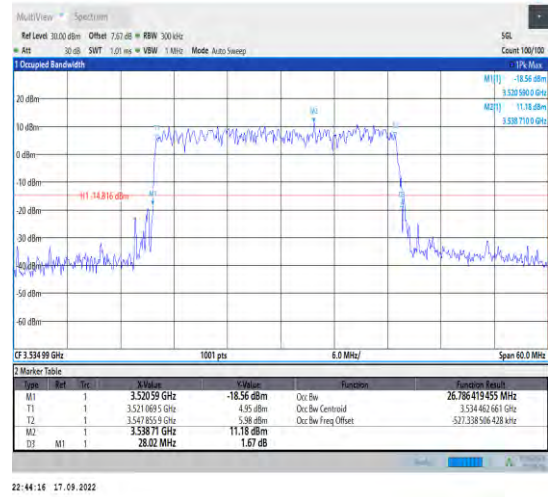
Attention: To check the authenticity of testing/inspection report & certificate, please contact us at telephone: (86-755) 83071443, or email: CN.Doccheck@sgs.com

South of No. 6 Plant, No. 1, Pansheng Road, Suzhou Industrial Park, Suzhou Area, China (Jiangsu) Pilot Free Trade Zone 215000
 中国·苏州·中国(江苏)自由贸易试验区苏州片区苏州工业园区海陵路1号的6号厂房南座 邮编: 215000

t (86-512) 62992980 www.sgs.com.cn
 t (86-512) 62992980 sgs.china@sgs.com



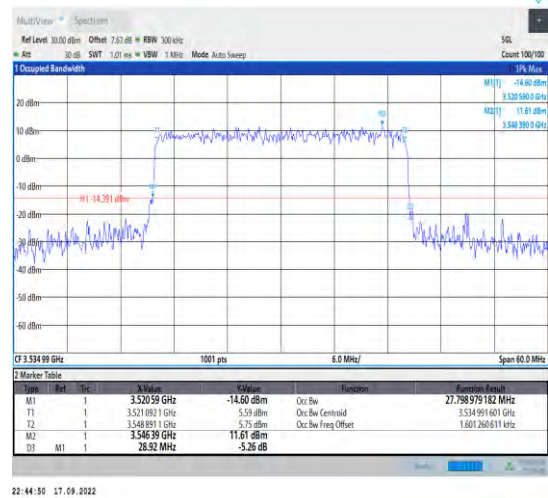
1-N78-3450-3550--30-30-H-4-DFT-64QAM-Outer_Fu II-75@0-Ant1-26.725-28.620-≤30-



1-N78-3450-3550--30-30-H-5-DFT-256QAM-Outer_Full-75@0-Ant1-26.786-28.020-≤30-



1-N78-3450-3550--30-30-H-6-CP-QPSK-Outer_Full-78@0-Ant1-27.803-29.460-≤30-



1-N78-3450-3550--30-30-H-7-CP-16QAM-Outer_Full-78@0-Ant1-27.799-28.920-≤30-

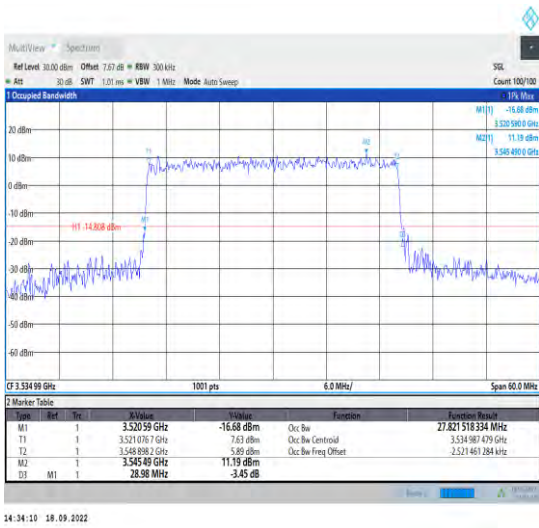


Unless otherwise agreed in writing, this document is issued by the Company subject to its General Conditions of Service printed overleaf, available on request or accessible at <http://www.sgs.com/en/Terms-and-Conditions.aspx> and, for electronic format documents, subject to Terms and Conditions for Electronic Documents at <http://www.sgs.com/en/Terms-and-Conditions/Terms-e-Documents.aspx>. Attention is drawn to the limitation of liability, indemnification and jurisdiction issues defined therein. Any holder of this document is advised that information contained hereon reflects the Company's findings at the time of its intervention only and within the limits of Client's instructions, if any. The Company's sole responsibility is to its Client and this document does not exonerate parties to a transaction from exercising all their rights and obligations under the transaction documents. This document cannot be reproduced except in full, without prior written approval of the Company. Any unauthorized alteration, forgery or falsification of the content or appearance of this document is unlawful and offenders may be prosecuted to the fullest extent of the law. Unless otherwise stated the results shown in this test report refer only to the sample(s) tested and such sample(s) are retained for 30 days only.

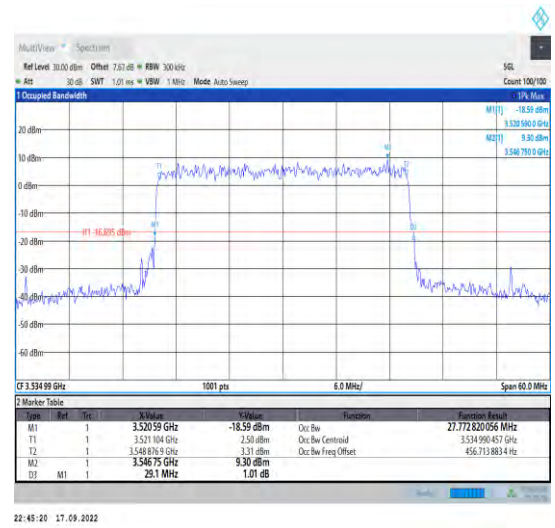
Attention: To check the authenticity of testing/inspection report & certificate, please contact us at telephone: (86-755) 83071443, or email: CN.Doccheck@sgs.com

South of No. 6 Plant, No. 1, Punsheng Road, Suzhou Industrial Park, Suzhou Area, China (Jiangsu) Pilot Free Trade Zone 215000
 中国·苏州·中国(江苏)自由贸易试验区苏州片区苏州工业园区润胜路1号的6号厂房南座 邮编: 215000

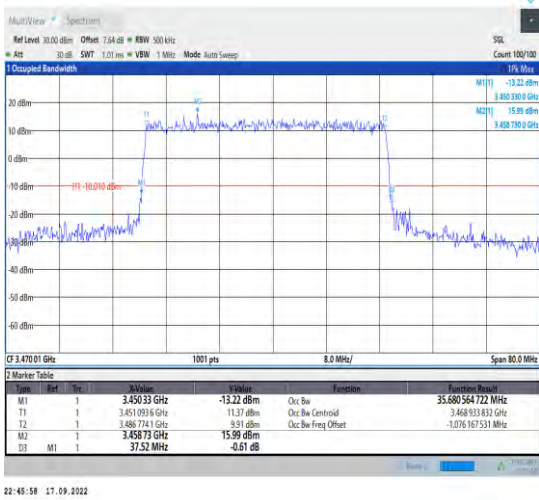
t (86-512) 62992980 www.sgs.com.cn
 t (86-512) 62992980 sgs.china@sgs.com



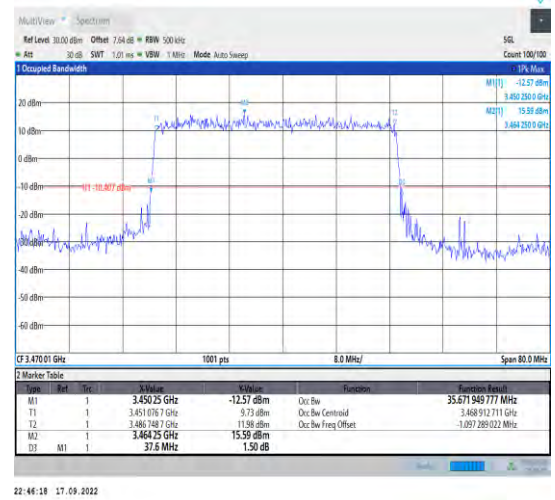
1-N78-3450-3550--30-30-H-8-CP-64QAM-Outer_Full
-78@0-Ant1-27.822-28.980<30-



1-N78-3450-3550--30-30-H-9-CP-256QAM-Outer_Fu
ll-78@0-Ant1-27.773-29.100<30-



1-N78-3450-3550--30-40-L-1-DFT-QPSK-Outer_Full
100@0-Ant1-35.681-37.520<40-



1-N78-3450-3550--30-40-L-2-DFT-PI2BPSK-Outer_F
ull-100@0-Ant1-35.672-37.600<40-

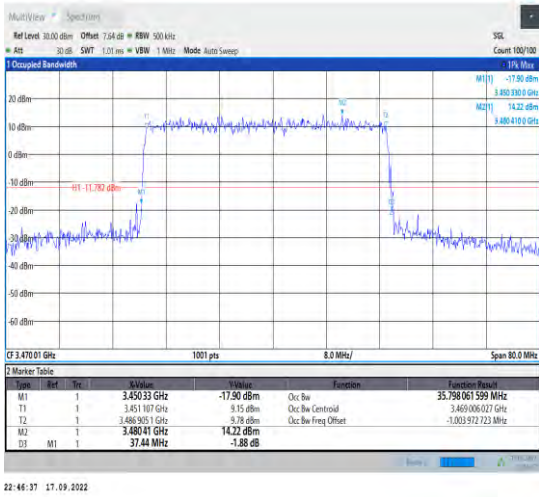


Unless otherwise agreed in writing, this document is issued by the Company subject to its General Conditions of Service printed overleaf, available on request or accessible at <http://www.sgs.com/en/Terms-and-Conditions.aspx> and, for electronic format documents, subject to Terms and Conditions for Electronic Documents at <http://www.sgs.com/en/Terms-and-Conditions/Terms-e-Documents.aspx>. Attention is drawn to the limitation of liability, indemnification and jurisdiction issues defined therein. Any holder of this document is advised that information contained hereon reflects the Company's findings at the time of its intervention only and within the limits of Client's instructions, if any. The Company's sole responsibility is to its Client and this document does not exonerate parties to a transaction from exercising all their rights and obligations under the transaction documents. This document cannot be reproduced except in full, without prior written approval of the Company. Any unauthorized alteration, forgery or falsification of the content or appearance of this document is unlawful and offenders may be prosecuted to the fullest extent of the law. Unless otherwise stated the results shown in this test report refer only to the sample(s) tested and such sample(s) are retained for 30 days only.

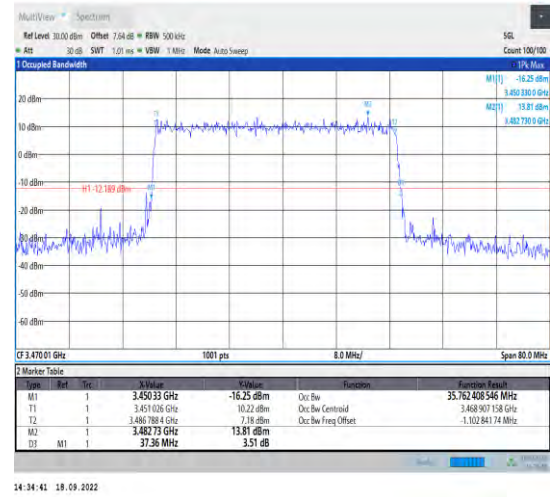
Attention: To check the authenticity of testing/inspection report & certificate, please contact us at telephone: (86-755) 83071443, or email: CN.Doccheck@sgs.com

South of No. 6 Plant, No. 1, Pansheng Road, Suzhou Industrial Park, Suzhou Area, China (Jiangsu) Pilot Free Trade Zone 215000
中国·苏州·中国(江苏)自由贸易试验区苏州片区苏州工业园区海胜路1号的6号厂房南座 邮编: 215000

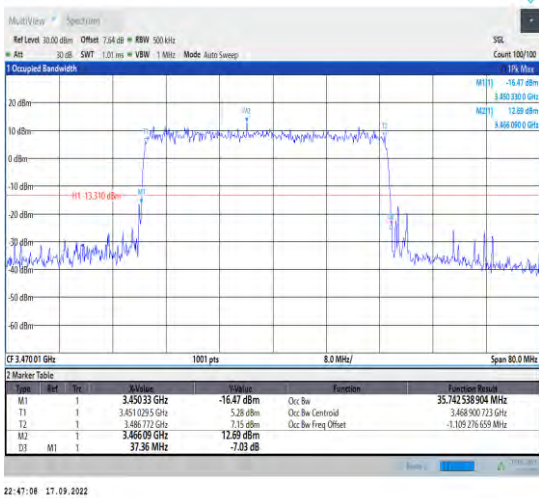
t (86-512) 62992980 www.sgs.com.cn
t (86-512) 62992980 sgs.china@sgs.com



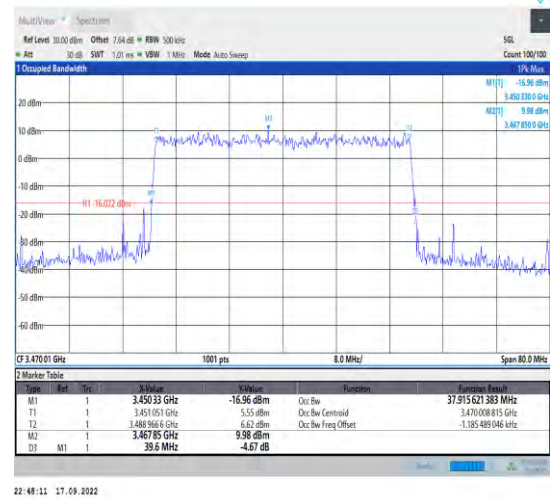
1-N78-3450-3550--30-40-L-3-DFT-16QAM-Outer_Fu
II-100@0-Ant1-35.798-37.440-<40-



1-N78-3450-3550--30-40-L-4-DFT-64QAM-Outer_Ful
I-100@0-Ant1-35.762-37.360-<40-



1-N78-3450-3550--30-40-L-5-DFT-256QAM-Outer_F
ull-100@0-Ant1-35.743-37.360-<40-



1-N78-3450-3550--30-40-L-6-CP-QPSK-Outer_Full-1
06@0-Ant1-33.648-34.720-<40-



Unless otherwise agreed in writing, this document is issued by the Company subject to its General Conditions of Service printed overleaf, available on request or accessible at <http://www.sgs.com/en/Terms-and-Conditions.aspx> and, for electronic format documents, subject to Terms and Conditions for Electronic Documents at <http://www.sgs.com/en/Terms-and-Conditions/Terms-e-Documents.aspx>. Attention is drawn to the limitation of liability, indemnification and jurisdiction issues defined therein. Any holder of this document is advised that information contained hereon reflects the Company's findings at the time of its intervention only and within the limits of Client's instructions, if any. The Company's sole responsibility is to its Client and this document does not exonerate parties to a transaction from exercising all their rights and obligations under the transaction documents. This document cannot be reproduced except in full, without prior written approval of the Company. Any unauthorized alteration, forgery or falsification of the content or appearance of this document is unlawful and offenders may be prosecuted to the fullest extent of the law. Unless otherwise stated the results shown in this test report refer only to the sample(s) tested and such sample(s) are retained for 30 days only.

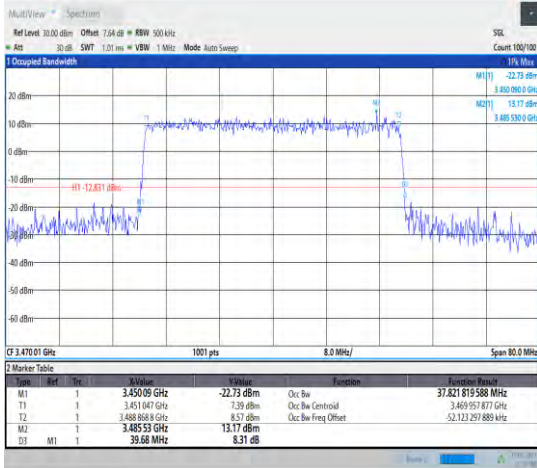
Attention: To check the authenticity of testing/inspection report & certificate, please contact us at telephone: (86-755) 83071443, or email: CN.Doccheck@sgs.com
 South of No. 6 Plant, No. 1, Pansheng Road, Suzhou Industrial Park, Suzhou Area, China (Jiangsu) Pilot Free Trade Zone 215000 t (86-512) 62992980 www.sgs.com.cn
 中国·苏州·中国(江苏)自由贸易试验区苏州片区苏州工业园区海澄路1号的6号厂房南座 邮编: 215000 t (86-512) 62992980 sgs.china@sgs.com



Report No.: SEWM2209000170RG02

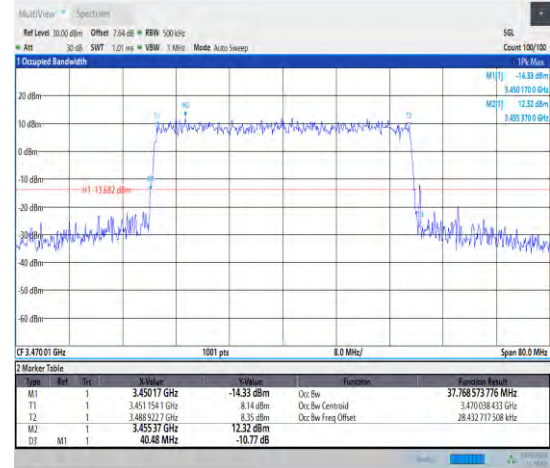
Rev.: 01

Page: 42 of 118



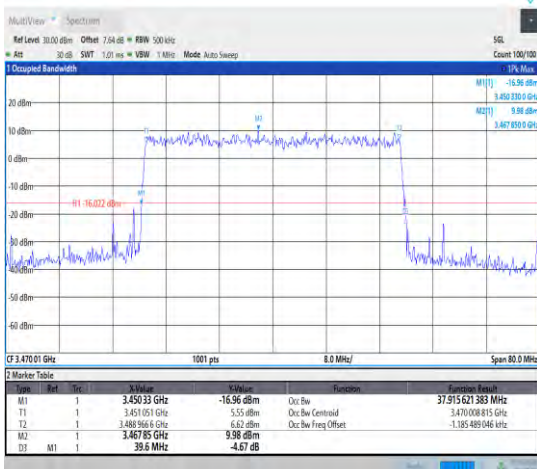
22:47:41 17.09.2022

1-N78-3450-3550--30-40-L-7-CP-16QAM-Outer_Full
-106@0-Ant1-37.822-39.680≤40-



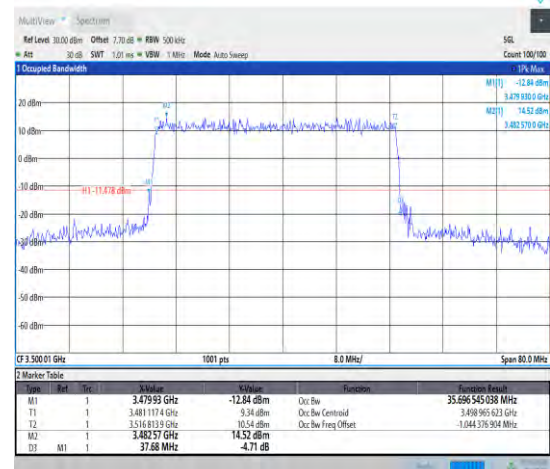
14:34:53 18.09.2022

1-N78-3450-3550--30-40-L-8-CP-64QAM-Outer_Full
-106@0-Ant1-37.769-40.480≤40-



22:48:11 17.09.2022

1-N78-3450-3550--30-40-L-9-CP-256QAM-Outer_Fu
II-106@0-Ant1-37.916-39.600≤40-



22:48:51 17.09.2022

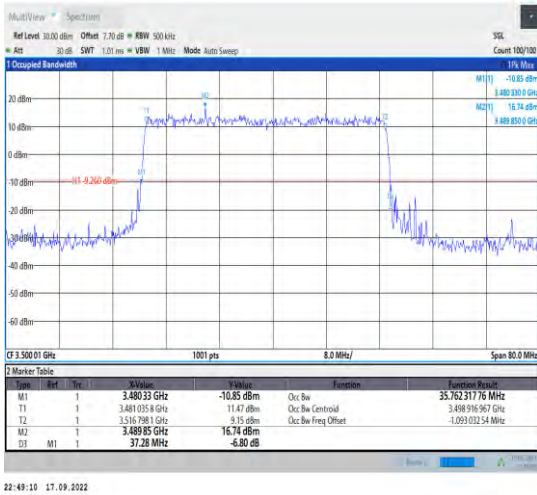
1-N78-3450-3550--30-40-M-1-DFT-QPSK-Outer_Full
-100@0-Ant1-35.697-37.680≤40-



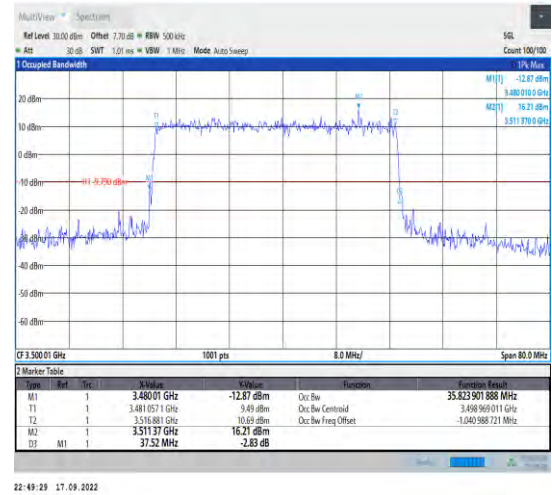
Unless otherwise agreed in writing, this document is issued by the Company subject to its General Conditions of Service printed overleaf, available on request or accessible at <http://www.sgs.com/en/Terms-and-Conditions.aspx> and, for electronic format documents, subject to Terms and Conditions for Electronic Documents at <http://www.sgs.com/en/Terms-and-Conditions/Terms-e-Documents.aspx>. Attention is drawn to the limitation of liability, indemnification and jurisdiction issues defined therein. Any holder of this document is advised that information contained hereon reflects the Company's findings at the time of its intervention only and within the limits of Client's instructions, if any. The Company's sole responsibility is to its Client and this document does not exonerate parties to a transaction from exercising all their rights and obligations under the transaction documents. This document cannot be reproduced except in full, without prior written approval of the Company. Any unauthorized alteration, forgery or falsification of the content or appearance of this document is unlawful and offenders may be prosecuted to the fullest extent of the law. Unless otherwise stated the results shown in this test report refer only to the sample(s) tested and such sample(s) are retained for 30 days only.
Attention: To check the authenticity of testing/inspection report & certificate, please contact us at telephone: (86-755) 8307 1443, or email: CN.Doccheck@sgs.com

South of No. 6 Plant, No. 1, Pulinsheng Road, Suzhou Industrial Park, Suzhou Area, China (Jiangsu) Pilot Free Trade Zone 215000
中国·苏州·中国(江苏)自由贸易试验区苏州片区苏州工业园区海胜路1号的6号厂房南座 邮编: 215000

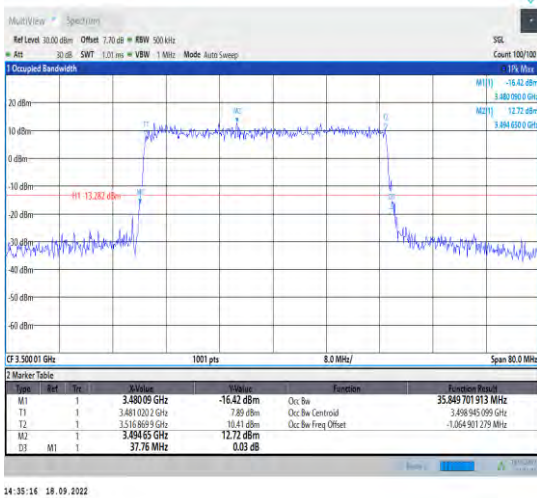
t (86-512) 62992980 www.sgs.com.cn
t (86-512) 62992980 sgs.china@sgs.com



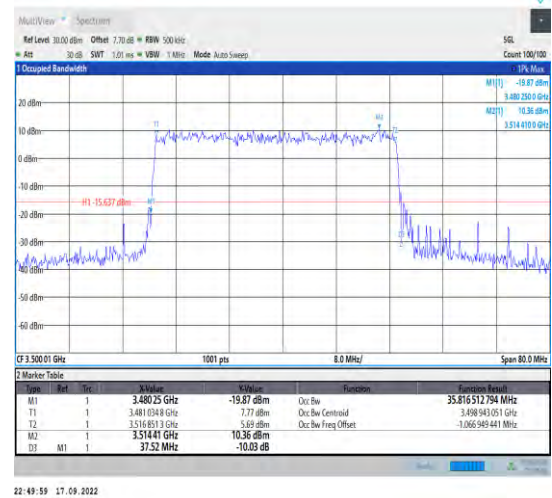
1-N78-3450-3550--30-40-M-2-DFT-PI2BPSK-Outer_F
Full-100@0-Ant1-35.762-37.280-<40-



1-N78-3450-3550--30-40-M-3-DFT-16QAM-Outer_F
Full-100@0-Ant1-35.824-37.520-<40-



1-N78-3450-3550--30-40-M-4-DFT-64QAM-Outer_F
Full-100@0-Ant1-35.85-37.760-<40-



1-N78-3450-3550--30-40-M-5-DFT-256QAM-Outer_F
Full-100@0-Ant1-35.817-37.520-<40-



Unless otherwise agreed in writing, this document is issued by the Company subject to its General Conditions of Service printed overleaf, available on request or accessible at <http://www.sgs.com/en/Terms-and-Conditions.aspx> and, for electronic format documents, subject to Terms and Conditions for Electronic Documents at <http://www.sgs.com/en/Terms-and-Conditions/Terms-e-Document.aspx>. Attention is drawn to the limitation of liability, indemnification and jurisdiction issues defined therein. Any holder of this document is advised that information contained hereon reflects the Company's findings at the time of its intervention only and within the limits of Client's instructions, if any. The Company's sole responsibility is to its Client and this document does not exonerate parties to a transaction from exercising all their rights and obligations under the transaction documents. This document cannot be reproduced except in full, without prior written approval of the Company. Any unauthorized alteration, forgery or falsification of the content or appearance of this document is unlawful and offenders may be prosecuted to the fullest extent of the law. Unless otherwise stated the results shown in this test report refer only to the sample(s) tested and such sample(s) are retained for 30 days only.

Attention: To check the authenticity of testing/inspection report & certificate, please contact us at telephone: (86-755) 83071443, or email: CN.Doccheck@sgs.com
 South of No. 6 Plant, No. 1, Pansheng Road, Suzhou Industrial Park, Suzhou Area, China (Jiangsu) Pilot Free Trade Zone 215000 t (86-512) 62992980 www.sgs.com.cn
 中国·苏州·中国(江苏)自由贸易试验区苏州片区苏州工业园区海陵路1号的6号厂房南座 邮编: 215000 t (86-512) 62992980 sgs.china@sgs.com