

System Check_Head_13MHz_220623

DUT: CLA13-1011

Communication System: CW; Frequency: 13 MHz; Duty Cycle: 1:1

Medium: HSL_13_220623 Medium parameters used : $f = 13$ MHz; $\sigma = 0.726$ S/m; $\epsilon_r = 54.258$; $\rho = 1000$ kg/m³

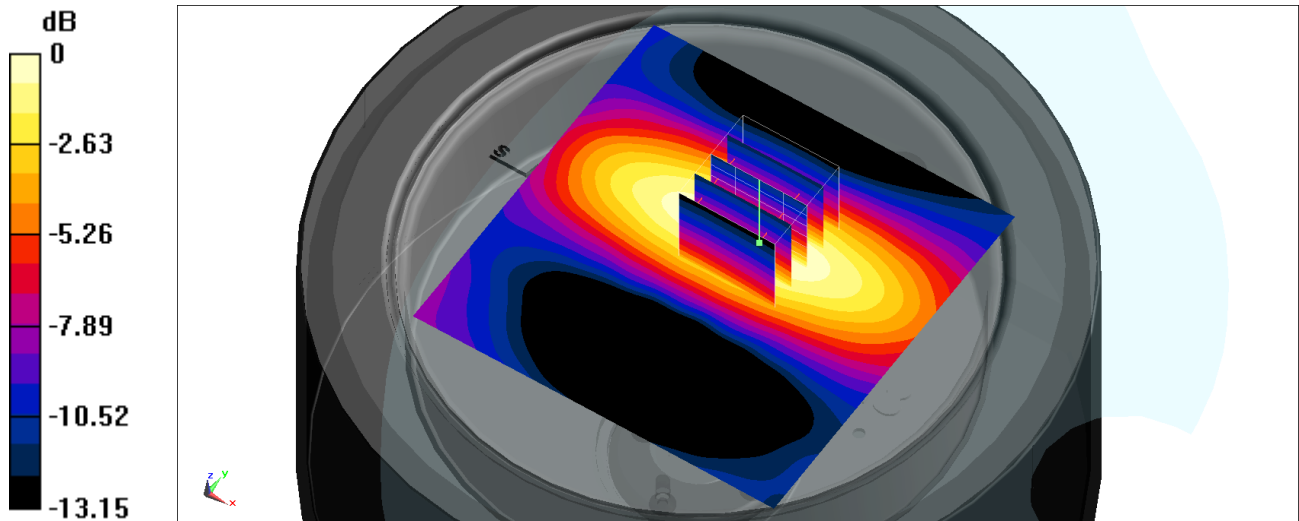
Ambient Temperature : 23.5 °C; Liquid Temperature : 22.5 °C

DASY5 Configuration:

- Probe: EX3DV4 - SN3931; ConvF(18.36, 18.36, 18.36) @ 13 MHz; Calibrated: 2021/10/21
- Sensor-Surface: 1.4mm (Mechanical Surface Detection)
- Electronics: DAE4 Sn699; Calibrated: 2022/2/24
- Phantom: SAM_Left; Type: SAM; Serial: 1796
- Measurement SW: DASY52, Version 52.10 (4); SEMCAD X Version 14.6.14 (7501)

Pin=250mW/Area Scan (81x81x1): Interpolated grid: dx=1.500 mm, dy=1.500 mm
Maximum value of SAR (interpolated) = 0.241 W/kg

Pin=250mW/Zoom Scan 2 (5x5x7)/Cube 0: Measurement grid: dx=8mm, dy=8mm, dz=5mm
Reference Value = 12.62 V/m; Power Drift = -0.16dB
Peak SAR (extrapolated) = 0.260 W/kg
SAR(1 g) = 0.142 W/kg; SAR(10 g) = 0.088 W/kg
Maximum value of SAR (measured) = 0.210 W/kg



0 dB = 0.241 W/kg = -6.18 dBW/kg