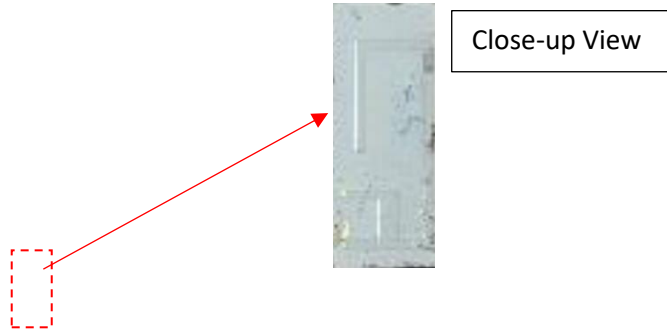


Specification For Approval

Client:	Brightway Innovation Intelligent Technology (Suzhou) Co., Ltd. Building A2, Shangjinwan Headquarters Economic Park, No. 2288, Wuzhong Avenue, Wuzhong Economic Development Zone, Suzhou, Jiangsu, P.R. China, Block A, Building 3, Changwu Mid Road 18#, Wujin Dist., Changzhou, Jiangsu, China
Antenna type	2.4GHz Bluetooth, PCB antenna

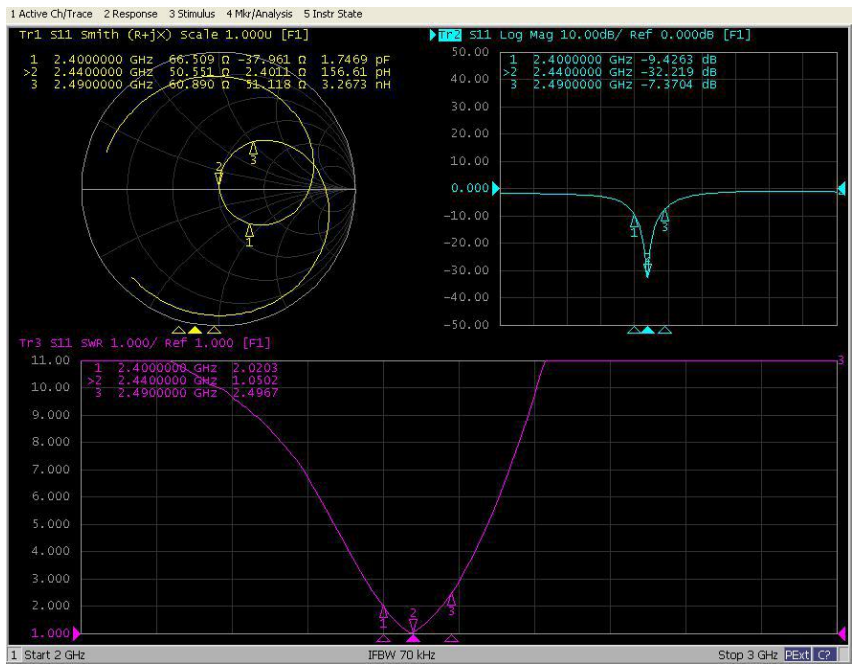
Test Photos



Technical parameters

Design Specifications	Typical
Antenna Type	PCB
working Frequency	2400-2490MHz
VSWR	≤2.5
Polarization	H/V
Radiation pattern	Omni
impedance	50Ω
Operating Temp	-40°C~80°C

Standing wave ratio & return loss diagram



Gain and efficiency

频率/MHz	2400	2410	2420	2430	2440	2450	2460	2470	2480	2490	2500
最大增益/dBi	-0.11	0.12	0.18	0.2	0.17	0.03	-0.1	-0.56	-1.04	-1.68	-2.38
效率/%	42.75	44.59	45.53	46.28	45.41	44.78	42.22	38.68	34.64	31.12	26.95

Radiation pattern (3D&2D)

