

FCC SAR Test Report

APPLICANT : Xiaomi Communications
Co., Ltd.
EQUIPMENT : Mobile Phone
BRAND NAME : MI
MODEL NAME : 2014819
MARKETING NAME : Redmi 2 Pro
FCC ID : 2AFZZ-H2X819
STANDARD : FCC 47 CFR Part 2 (2.1093)
ANSI/IEEE C95.1-1992
IEEE 1528-2013

We, SPORTON INTERNATIONAL (SHENZHEN) INC., would like to declare that the tested sample has been evaluated in accordance with the procedures and had been in compliance with the applicable technical standards.

The test results in this report apply exclusively to the tested model / sample. Without written approval of SPORTON INTERNATIONAL (SHENZHEN) INC., the test report shall not be reproduced except in full.



Prepared by: Mark Qu / Manager



Approved by: Jones Tsai / Manager



Testing Laboratory
2353

SPORTON INTERNATIONAL (SHENZHEN) INC.

1F & 2F, Building A, Morning Business Center, No. 4003 ShiGu Rd., Xili Town,
Nanshan District, Shenzhen, Guangdong, P. R. China



Table of Contents

1. Statement of Compliance4

2. Administration Data5

3. Guidance Standard5

4. Equipment Under Test (EUT) Information.....6

 4.1 General Information6

 4.2 General LTE SAR Test and Reporting Considerations7

5. RF Exposure Limits9

 5.1 Uncontrolled Environment.....9

 5.2 Controlled Environment.....9

6. Specific Absorption Rate (SAR).....10

 6.1 Introduction10

 6.2 SAR Definition.....10

7. System Description and Setup11

8. Measurement Procedures12

 8.1 Spatial Peak SAR Evaluation.....12

 8.2 Power Reference Measurement.....13

 8.3 Area Scan13

 8.4 Zoom Scan.....14

 8.5 Volume Scan Procedures.....14

 8.6 Power Drift Monitoring.....14

9. Test Equipment List15

10. System Verification16

 10.1 Tissue Verification16

 10.2 System Performance Check Results.....17

11. RF Exposure Positions18

 11.1 Ear and handset reference point18

 11.2 Definition of the cheek position.....19

 11.3 Definition of the tilt position.....20

 11.4 Body Worn Accessory21

 11.5 Wireless Router.....21

12. Conducted RF Output Power (Unit: dBm).....22

13. Bluetooth Exclusions Applied36

14. Antenna Location37

15. SAR Test Results38

 15.1 Head SAR40

 15.2 Hotspot SAR42

 15.3 Body Worn Accessory SAR.....45

 15.4 Repeated SAR Measurement47

16. Simultaneous Transmission Analysis.....48

 16.1 Head Exposure Conditions49

 16.2 Hotspot Exposure Conditions.....50

 16.3 Body-Worn Accessory Exposure Conditions51

17. Uncertainty Assessment52

18. References54

Appendix A. Plots of System Performance Check

Appendix B. Plots of High SAR Measurement

Appendix C. DASY Calibration Certificate

Appendix D. Test Setup Photos



1. Statement of Compliance

The maximum results of Specific Absorption Rate (SAR) found during testing for **Xiaomi Communications Co., Ltd., Mobile Phone, 2014819** are as follows.

Equipment Class	Wireless Operated	Highest SAR Summary			Highest Simultaneous Transmission 1g SAR (W/kg)
		Head (Separation 0mm)	Body-worn (Separation 10mm)	Wireless Router (Separation 10mm)	
		1g SAR (W/kg)	1g SAR (W/kg)	1g SAR (W/kg)	
PCE	WWAN	0.79	1.19	1.19	1.35
DTS	2.4GHz WLAN	0.23	0.16	0.16	1.35
Date of Testing:		2015/10/14 ~ 2015/10/17			

This device is in compliance with Specific Absorption Rate (SAR) for general population/uncontrolled exposure limits (1.6 W/kg) specified in FCC 47 CFR part 2 (2.1093) and ANSI/IEEE C95.1-1992, and had been tested in accordance with the measurement methods and procedures specified in IEEE 1528-2013 and FCC KDB publications.



2. Administration Data

Testing Laboratory	
Test Site	SPORTON INTERNATIONAL (SHENZHEN) INC.
Test Site Location	1F & 2F, Building A, Morning Business Center, No. 4003 ShiGu Rd., Xili Town, Nanshan District, Shenzhen, Guangdong, P. R. China TEL: +86-755-8637-9589 FAX: +86-755-8637-9595

Applicant	
Company Name	Xiaomi Communications Co., Ltd.
Address	The Rainbow City of China Resources, NO.68, Qinghe Middle Street, Haidian District, Beijing, China

Manufacturer	
Company Name	Xiaomi Communications Co., Ltd.
Address	The Rainbow City of China Resources, NO.68, Qinghe Middle Street, Haidian District, Beijing, China

3. Guidance Standard

The Specific Absorption Rate (SAR) testing specification, method, and procedure for this device is in accordance with the following standards:

- FCC 47 CFR Part 2 (2.1093)
- ANSI/IEEE C95.1-1992
- IEEE 1528-2013
- FCC KDB 865664 D01 SAR Measurement 100 MHz to 6 GHz v01r04
- FCC KDB 865664 D02 SAR Reporting v01r01
- FCC KDB 447498 D01 General RF Exposure Guidance v05r02
- FCC KDB 648474 D04 SAR Evaluation Considerations for Wireless Handsets v01r02
- FCC KDB 248227 D01 802.11 Wi-Fi SAR v02r01
- FCC KDB 941225 D01 3G SAR Procedures v03
- FCC KDB 941225 D05 SAR for LTE Devices v02r03
- FCC KDB 941225 D06 Hotspot Mode SAR v02

4. Equipment Under Test (EUT) Information

4.1 General Information

Product Feature & Specification	
Equipment Name	Mobile Phone
Brand Name	MI
Model Name	2014819
Marketing Name	Redmi 2 Pro
FCC ID	2AFZZ-H2X819
IMEI Code	SIM1: 866393023014295 SIM 2: 866393023011291
Wireless Technology and Frequency Range	GSM850: 824.2 MHz ~ 848.8 MHz GSM1900: 1850.2 MHz ~ 1909.8 MHz WCDMA Band II: 1852.4 MHz ~ 1907.6 MHz WCDMA Band V: 826.4 MHz ~ 846.6 MHz LTE Band 2: 1850.7 MHz ~ 1909.3 MHz LTE Band 4: 1710.7 MHz ~ 1754.3 MHz LTE Band 7: 2502.5 MHz ~ 2567.5 MHz WLAN 2.4GHz Band: 2412 MHz ~ 2472 MHz Bluetooth: 2402 MHz ~ 2480 MHz
Mode	<ul style="list-style-type: none"> · GSM/GPRS/EGPRS · RMC/AMR 12.2Kbps · HSDPA · HSUPA · DC-HSDPA · HSPA+(16QAM uplink is not supported) · LTE: QPSK, 16QAM · 802.11b/g/n HT20 · Bluetooth v3.0+EDR, Bluetooth v4.0 LE
HW Version	88047
SW Version	MIUI 6
GSM / (E)GPRS Transfer mode	Class B – EUT cannot support Packet Switched and Circuit Switched Network simultaneously but can automatically switch between Packet and Circuit Switched Network.
EUT Stage	Production Unit
Remark: <ol style="list-style-type: none"> 1. This device 2.4GHz WLAN supports Hotspot operation, and 802.11n-HT40 is not supported in 2.4GHz WLAN. 2. This device supported VoIP in GPRS, EGPRS, WCDMA and LTE (e.g. 3rd party VoIP). 3. This device supports GRPS/EGPRS mode up to multi-slot class 12. 4. This device does not support DTM operation. 5. This device has 2 SIM slots and supports dual SIM dual Standby. The WWAN radio transmission will be enabled by either one SIM at a time (Single active). After pre-scan two SIM cards power, we found test result of the SIM2 was the worse, so we chose dual SIM2 card to perform all tests. 	



4.2 General LTE SAR Test and Reporting Considerations

Summarized necessary items addressed in KDB 941225 D05 v02r03																																							
FCC ID	2AFZZ-H2X819																																						
Equipment Name	Mobile Phone																																						
Operating Frequency Range of each LTE transmission band	LTE Band 2: 1850.7 MHz ~ 1909.3 MHz LTE Band 4: 1710.7 MHz ~ 1754.3 MHz LTE Band 7: 2502.5 MHz ~ 2567.5 MHz																																						
Channel Bandwidth	LTE Band 2: 1.4MHz, 3MHz, 5MHz, 10MHz, 15MHz, 20MHz LTE Band 4: 1.4MHz, 3MHz, 5MHz, 10MHz, 15MHz, 20MHz LTE Band 7: 5MHz, 10MHz, 15MHz, 20MHz																																						
uplink modulations used	QPSK, and 16QAM																																						
LTE Voice / Data requirements	Data only																																						
LTE Release	R9, Cat 4																																						
LTE MPR permanently built-in by design	<p style="text-align: center;">Table 6.2.3-1: Maximum Power Reduction (MPR) for Power Class 3</p> <table border="1"> <thead> <tr> <th rowspan="2">Modulation</th> <th colspan="6">Channel bandwidth / Transmission bandwidth (RB)</th> <th rowspan="2">MPR (dB)</th> </tr> <tr> <th>1.4 MHz</th> <th>3.0 MHz</th> <th>5 MHz</th> <th>10 MHz</th> <th>15 MHz</th> <th>20 MHz</th> </tr> </thead> <tbody> <tr> <td>QPSK</td> <td>> 5</td> <td>> 4</td> <td>> 8</td> <td>> 12</td> <td>> 16</td> <td>> 18</td> <td>≤ 1</td> </tr> <tr> <td>16 QAM</td> <td>≤ 5</td> <td>≤ 4</td> <td>≤ 8</td> <td>≤ 12</td> <td>≤ 16</td> <td>≤ 18</td> <td>≤ 1</td> </tr> <tr> <td>16 QAM</td> <td>> 5</td> <td>> 4</td> <td>> 8</td> <td>> 12</td> <td>> 16</td> <td>> 18</td> <td>≤ 2</td> </tr> </tbody> </table>	Modulation	Channel bandwidth / Transmission bandwidth (RB)						MPR (dB)	1.4 MHz	3.0 MHz	5 MHz	10 MHz	15 MHz	20 MHz	QPSK	> 5	> 4	> 8	> 12	> 16	> 18	≤ 1	16 QAM	≤ 5	≤ 4	≤ 8	≤ 12	≤ 16	≤ 18	≤ 1	16 QAM	> 5	> 4	> 8	> 12	> 16	> 18	≤ 2
Modulation	Channel bandwidth / Transmission bandwidth (RB)						MPR (dB)																																
	1.4 MHz	3.0 MHz	5 MHz	10 MHz	15 MHz	20 MHz																																	
QPSK	> 5	> 4	> 8	> 12	> 16	> 18	≤ 1																																
16 QAM	≤ 5	≤ 4	≤ 8	≤ 12	≤ 16	≤ 18	≤ 1																																
16 QAM	> 5	> 4	> 8	> 12	> 16	> 18	≤ 2																																
LTE A-MPR	In the base station simulator configuration, Network Setting value is set to NS_01 to disable A-MPR during SAR testing and the LTE SAR tests was transmitting on all TTI frames (Maximum TTI)																																						
Spectrum plots for RB configuration	A properly configured base station simulator was used for the SAR and power measurement; therefore, spectrum plots for each RB allocation and offset configuration are not included in the SAR report.																																						



Transmission (H, M, L) channel numbers and frequencies in each LTE band												
LTE Band 2												
	Bandwidth 1.4 MHz		Bandwidth 3 MHz		Bandwidth 5 MHz		Bandwidth 10 MHz		Bandwidth 15 MHz		Bandwidth 20 MHz	
	Ch. #	Freq. (MHz)	Ch. #	Freq. (MHz)	Ch. #	Freq. (MHz)	Ch. #	Freq. (MHz)	Ch. #	Freq. (MHz)	Ch. #	Freq. (MHz)
L	18607	1850.7	18615	1851.5	18625	1852.5	18650	1855	18675	1857.5	18700	1860
M	18900	1880	18900	1880	18900	1880	18900	1880	18900	1880	18900	1880
H	19193	1909.3	19185	1908.5	19175	1907.5	19150	1905	19125	1902.5	19100	1900
LTE Band 4												
	Bandwidth 1.4 MHz		Bandwidth 3 MHz		Bandwidth 5 MHz		Bandwidth 10 MHz		Bandwidth 15 MHz		Bandwidth 20 MHz	
	Ch. #	Freq. (MHz)	Ch. #	Freq. (MHz)	Ch. #	Freq. (MHz)	Ch. #	Freq. (MHz)	Ch. #	Freq. (MHz)	Ch. #	Freq. (MHz)
L	19957	1710.7	19965	1711.5	19975	1712.5	20000	1715	20025	1717.5	20050	1720
M	20175	1732.5	20175	1732.5	20175	1732.5	20175	1732.5	20175	1732.5	20175	1732.5
H	20393	1754.3	20385	1753.5	20375	1752.5	20350	1750	20325	1747.5	20300	1745
LTE Band 7												
	Bandwidth 5 MHz		Bandwidth 10 MHz		Bandwidth 15 MHz		Bandwidth 20 MHz					
	Ch. #	Freq. (MHz)	Ch. #	Freq. (MHz)	Ch. #	Freq. (MHz)	Ch. #	Freq. (MHz)				
L	20775	2502.5	20800	2505	20825	2507.5	20850	2510				
M	21100	2535	21100	2535	21100	2535	21100	2535				
H	21425	2567.5	21400	2565	21375	2562.5	21350	2560				



5. RF Exposure Limits

5.1 Uncontrolled Environment

Uncontrolled Environments are defined as locations where there is the exposure of individuals who have no knowledge or control of their exposure. The general population/uncontrolled exposure limits are applicable to situations in which the general public may be exposed or in which persons who are exposed as a consequence of their employment may not be made fully aware of the potential for exposure or cannot exercise control over their exposure. Members of the general public would come under this category when exposure is not employment-related; for example, in the case of a wireless transmitter that exposes persons in its vicinity.

5.2 Controlled Environment

Controlled Environments are defined as locations where there is exposure that may be incurred by persons who are aware of the potential for exposure, (i.e. as a result of employment or occupation). In general, occupational/controlled exposure limits are applicable to situations in which persons are exposed as a consequence of their employment, who have been made fully aware of the potential for exposure and can exercise control over their exposure. The exposure category is also applicable when the exposure is of a transient nature due to incidental passage through a location where the exposure levels may be higher than the general population/uncontrolled limits, but the exposed person is fully aware of the potential for exposure and can exercise control over his or her exposure by leaving the area or by some other appropriate means.

Limits for Occupational/Controlled Exposure (W/kg)

Whole-Body	Partial-Body	Hands, Wrists, Feet and Ankles
0.4	8.0	20.0

Limits for General Population/Uncontrolled Exposure (W/kg)

Whole-Body	Partial-Body	Hands, Wrists, Feet and Ankles
0.08	1.6	4.0

1. Whole-Body SAR is averaged over the entire body, partial-body SAR is averaged over any 1gram of tissue defined as a tissue volume in the shape of a cube. SAR for hands, wrists, feet and ankles is averaged over any 10 grams of tissue defined as a tissue volume in the shape of a cube.

6. Specific Absorption Rate (SAR)

6.1 Introduction

SAR is related to the rate at which energy is absorbed per unit mass in an object exposed to a radio field. The SAR distribution in a biological body is complicated and is usually carried out by experimental techniques or numerical modeling. The standard recommends limits for two tiers of groups, occupational/controlled and general population/uncontrolled, based on a person's awareness and ability to exercise control over his or her exposure. In general, occupational/controlled exposure limits are higher than the limits for general population/uncontrolled.

6.2 SAR Definition

The SAR definition is the time derivative (rate) of the incremental energy (dW) absorbed by (dissipated in) an incremental mass (dm) contained in a volume element (dv) of a given density (ρ). The equation description is as below:

$$SAR = \frac{d}{dt} \left(\frac{dW}{dm} \right) = \frac{d}{dt} \left(\frac{dW}{\rho dv} \right)$$

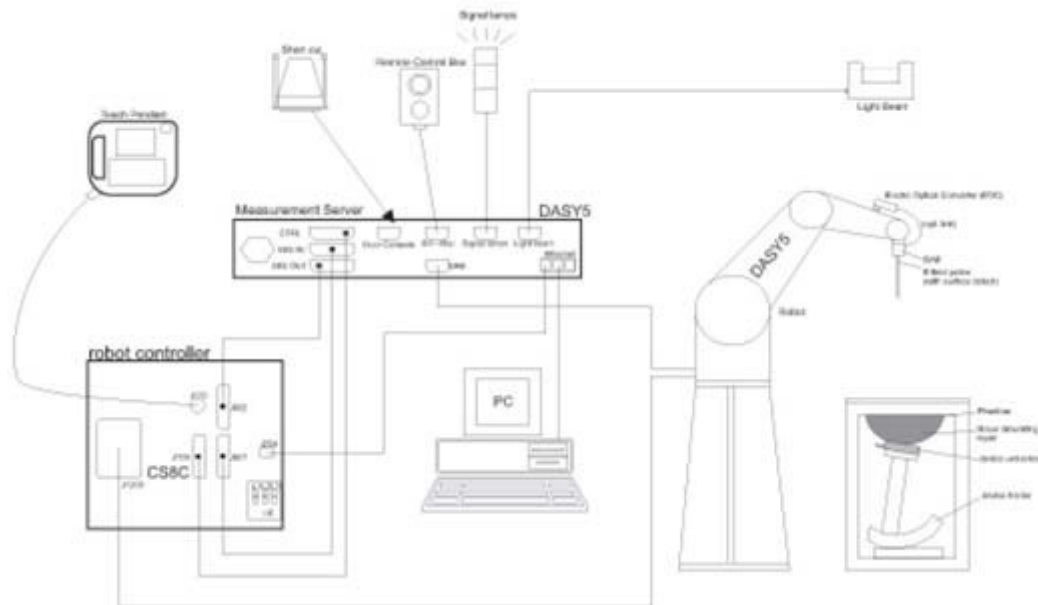
SAR is expressed in units of Watts per kilogram (W/kg)

$$SAR = \frac{\sigma |E|^2}{\rho}$$

Where: σ is the conductivity of the tissue, ρ is the mass density of the tissue and E is the RMS electrical field strength.

7. System Description and Setup

The DASY system used for performing compliance tests consists of the following items:



- A standard high precision 6-axis robot with controller, teach pendant and software. An arm extension for accommodating the data acquisition electronics (DAE).
- An isotropic Field probe optimized and calibrated for the targeted measurement.
- A data acquisition electronics (DAE) which performs the signal amplification, signal multiplexing, AD-conversion, offset measurements, mechanical surface detection, collision detection, etc. The unit is battery powered with standard or rechargeable batteries. The signal is optically transmitted to the EOC.
- The Electro-optical converter (EOC) performs the conversion from optical to electrical signals for the digital communication to the DAE. To use optical surface detection, a special version of the EOC is required. The EOC signal is transmitted to the measurement server.
- The function of the measurement server is to perform the time critical tasks such as signal filtering, control of the robot operation and fast movement interrupts.
- The Light Beam used is for probe alignment. This improves the (absolute) accuracy of the probe positioning.
- A computer running WinXP or Win7 and the DASY5 software.
- Remote control and teach pendant as well as additional circuitry for robot safety such as warning lamps, etc.
- The phantom, the device holder and other accessories according to the targeted measurement.

8. Measurement Procedures

The measurement procedures are as follows:

<Conducted power measurement>

- (a) For WWAN power measurement, use base station simulator to configure EUT WWAN transmission in conducted connection with RF cable, at maximum power in each supported wireless interface and frequency band.
- (b) Read the WWAN RF power level from the base station simulator.
- (c) For WLAN/BT power measurement, use engineering software to configure EUT WLAN/BT continuously transmission, at maximum RF power in each supported wireless interface and frequency band
- (d) Connect EUT RF port through RF cable to the power meter, and measure WLAN/BT output power

<SAR measurement>

- (a) Use base station simulator to configure EUT WWAN transmission in radiated connection, and engineering software to configure EUT WLAN/BT continuously transmission, at maximum RF power, in the highest power channel.
- (b) Place the EUT in the positions as Appendix D demonstrates.
- (c) Set scan area, grid size and other setting on the DASY software.
- (d) Measure SAR results for the highest power channel on each testing position.
- (e) Find out the largest SAR result on these testing positions of each band
- (f) Measure SAR results for other channels in worst SAR testing position if the reported SAR of highest power channel is larger than 0.8 W/kg

According to the test standard, the recommended procedure for assessing the peak spatial-average SAR value consists of the following steps:

- (a) Power reference measurement
- (b) Area scan
- (c) Zoom scan
- (d) Power drift measurement

8.1 Spatial Peak SAR Evaluation

The procedure for spatial peak SAR evaluation has been implemented according to the test standard. It can be conducted for 1g and 10g, as well as for user-specific masses. The DASY software includes all numerical procedures necessary to evaluate the spatial peak SAR value.

The base for the evaluation is a "cube" measurement. The measured volume must include the 1g and 10g cubes with the highest averaged SAR values. For that purpose, the center of the measured volume is aligned to the interpolated peak SAR value of a previously performed area scan.

The entire evaluation of the spatial peak values is performed within the post-processing engine (SEMCAD). The system always gives the maximum values for the 1g and 10g cubes. The algorithm to find the cube with highest averaged SAR is divided into the following stages:

- (a) Extraction of the measured data (grid and values) from the Zoom Scan
- (b) Calculation of the SAR value at every measurement point based on all stored data (A/D values and measurement parameters)
- (c) Generation of a high-resolution mesh within the measured volume
- (d) Interpolation of all measured values from the measurement grid to the high-resolution grid
- (e) Extrapolation of the entire 3-D field distribution to the phantom surface over the distance from sensor to surface
- (f) Calculation of the averaged SAR within masses of 1g and 10g

8.2 Power Reference Measurement

The Power Reference Measurement and Power Drift Measurements are for monitoring the power drift of the device under test in the batch process. The minimum distance of probe sensors to surface determines the closest measurement point to phantom surface. This distance cannot be smaller than the distance of sensor calibration points to probe tip as defined in the probe properties.

8.3 Area Scan

The area scan is used as a fast scan in two dimensions to find the area of high field values, before doing a fine measurement around the hot spot. The sophisticated interpolation routines implemented in DASY software can find the maximum found in the scanned area, within a range of the global maximum. The range (in dB0 is specified in the standards for compliance testing. For example, a 2 dB range is required in IEEE standard 1528 and IEC 62209 standards, whereby 3 dB is a requirement when compliance is assessed in accordance with the ARIB standard (Japan), if only one zoom scan follows the area scan, then only the absolute maximum will be taken as reference. For cases where multiple maximums are detected, the number of zoom scans has to be increased accordingly.

Area scan parameters extracted from FCC KDB 865664 D01v01r04 SAR measurement 100 MHz to 6 GHz.

	≤ 3 GHz	> 3 GHz
Maximum distance from closest measurement point (geometric center of probe sensors) to phantom surface	5 ± 1 mm	$\frac{1}{2} \cdot \delta \cdot \ln(2) \pm 0.5 \text{ mm}$
Maximum probe angle from probe axis to phantom surface normal at the measurement location	30° ± 1°	20° ± 1°
Maximum area scan spatial resolution: $\Delta x_{Area}, \Delta y_{Area}$	≤ 2 GHz: ≤ 15 mm 2 – 3 GHz: ≤ 12 mm	3 – 4 GHz: ≤ 12 mm 4 – 6 GHz: ≤ 10 mm
	When the x or y dimension of the test device, in the measurement plane orientation, is smaller than the above, the measurement resolution must be ≤ the corresponding x or y dimension of the test device with at least one measurement point on the test device.	

8.4 Zoom Scan

Zoom scans are used assess the peak spatial SAR values within a cubic averaging volume containing 1 gram and 10 gram of simulated tissue. The zoom scan measures points (refer to table below) within a cube shoes base faces are centered on the maxima found in a preceding area scan job within the same procedure. When the measurement is done, the zoom scan evaluates the averaged SAR for 1 gram and 10 gram and displays these values next to the job's label.

Zoom scan parameters extracted from FCC KDB 865664 D01v01r04 SAR measurement 100 MHz to 6 GHz.

		≤ 3 GHz	> 3 GHz	
Maximum zoom scan spatial resolution: $\Delta x_{Zoom}, \Delta y_{Zoom}$		≤ 2 GHz: ≤ 8 mm 2 – 3 GHz: ≤ 5 mm*	3 – 4 GHz: ≤ 5 mm* 4 – 6 GHz: ≤ 4 mm*	
Maximum zoom scan spatial resolution, normal to phantom surface	uniform grid: $\Delta z_{Zoom}(n)$	≤ 5 mm	3 – 4 GHz: ≤ 4 mm 4 – 5 GHz: ≤ 3 mm 5 – 6 GHz: ≤ 2 mm	
	graded grid	$\Delta z_{Zoom}(1)$: between 1 st two points closest to phantom surface	≤ 4 mm	3 – 4 GHz: ≤ 3 mm 4 – 5 GHz: ≤ 2.5 mm 5 – 6 GHz: ≤ 2 mm
		$\Delta z_{Zoom}(n>1)$: between subsequent points	$\leq 1.5 \cdot \Delta z_{Zoom}(n-1)$	
Minimum zoom scan volume	x, y, z	≥ 30 mm	3 – 4 GHz: ≥ 28 mm 4 – 5 GHz: ≥ 25 mm 5 – 6 GHz: ≥ 22 mm	
Note: δ is the penetration depth of a plane-wave at normal incidence to the tissue medium; see draft standard IEEE P1528-2011 for details. * When zoom scan is required and the <i>reported</i> SAR from the <i>area scan based 1-g SAR estimation</i> procedures of KDB 447498 is ≤ 1.4 W/kg, ≤ 8 mm, ≤ 7 mm and ≤ 5 mm zoom scan resolution may be applied, respectively, for 2 GHz to 3 GHz, 3 GHz to 4 GHz and 4 GHz to 6 GHz.				

8.5 Volume Scan Procedures

The volume scan is used for assess overlapping SAR distributions for antennas transmitting in different frequency bands. It is equivalent to an oversized zoom scan used in standalone measurements. The measurement volume will be used to enclose all the simultaneous transmitting antennas. For antennas transmitting simultaneously in different frequency bands, the volume scan is measured separately in each frequency band. In order to sum correctly to compute the 1g aggregate SAR, the EUT remain in the same test position for all measurements and all volume scan use the same spatial resolution and grid spacing. When all volume scan were completed, the software, SEMCAD postprocessor can combine and subsequently superpose these measurement data to calculating the multiband SAR.

8.6 Power Drift Monitoring

All SAR testing is under the EUT install full charged battery and transmit maximum output power. In DASY measurement software, the power reference measurement and power drift measurement procedures are used for monitoring the power drift of EUT during SAR test. Both these procedures measure the field at a specified reference position before and after the SAR testing. The software will calculate the field difference in dB. If the power drifts more than 5%, the SAR will be retested.



9. Test Equipment List

Manufacturer	Name of Equipment	Type/Model	Serial Number	Calibration	
				Last Cal.	Due Date
SPEAG	835MHz System Validation Kit	D835V2	4d091	Nov. 21, 2014	Nov. 20, 2015
SPEAG	1750MHz System Validation Kit	D1750V2	1069	Nov. 21, 2014	Nov. 20, 2015
SPEAG	1900MHz System Validation Kit	D1900V2	5d118	Nov. 21, 2014	Nov. 20, 2015
SPEAG	2450MHz System Validation Kit	D2450V2	926	Jul. 24, 2015	Jul. 23, 2016
SPEAG	2600MHz System Validation Kit	D2600V2	1061	Nov. 19, 2014	Nov. 18, 2015
SPEAG	Data Acquisition Electronics	DAE4	1386	Feb. 19, 2015	Feb. 18, 2016
SPEAG	Data Acquisition Electronics	DAE4	1303	Dec. 11, 2014	Dec. 10, 2015
SPEAG	Dosimetric E-Field Probe	EX3DV4	3958	Jul. 23, 2015	Jul. 22, 2016
SPEAG	Dosimetric E-Field Probe	EX3DV4	3819	Nov. 13, 2014	Nov. 12, 2015
SPEAG	SAM Twin Phantom	QD 000 P40 CD	TP-1670	NCR	NCR
SPEAG	SAM Twin Phantom	QD 000 P40 CD	TP-1671	NCR	NCR
SPEAG	Phone Positioner	N/A	N/A	NCR	NCR
Anritsu	Radio communication analyzer	MT8820C	6201300653	Aug. 25, 2015	Aug. 24, 2016
Agilent	Wireless Communication Test Set	E5515C	MY50267224	Aug. 07, 2015	Aug. 06, 2016
Agilent	Network Analyzer	E5071C	MY46317418	Dec. 09, 2014	Dec. 08, 2015
SPEAG	Dielectric Assessment KIT	DAK-3.5	1032	NCR	NCR
R&S	Signal Generator	SMBV100A	258305	Jan. 23, 2015	Jan. 22, 2016
mini-circuits	Amplifier	ZVE-3W-83+	162601250	NCR	NCR
Anritsu	Power Sensor	MA2411B	1207253	Jan. 28, 2015	Jan. 27, 2016
Anritsu	Power Meter	ML2495A	1218010	Jan. 28, 2015	Jan. 27, 2016
Anritsu	Power Sensor	MA2411B	917070	Jan. 23, 2015	Jan. 22, 2016
Anritsu	Power Meter	ML2495A	1005002	Jan. 23, 2015	Jan. 22, 2016
R&S	CBT BLUETOOTH TESTER	CBT	100963	Jan. 28, 2015	Jan. 27, 2016
R&S	Spectrum Analyzer	FSP7	101634	Aug. 07, 2015	Aug. 06, 2016
Agilent	Dual Directional Coupler	778D	50422		Note1
Woken	Attenuator 1	WK0602-XX	N/A		Note1
PE	Attenuator 2	PE7005-10	N/A		Note1
PE	Attenuator 3	PE7005- 3	N/A		Note1
AR	Power Amplifier	5S1G4M2	0328767		Note1
Mini-Circuits	Power Amplifier	ZVE-3W	162601250		Note1
Mini-Circuits	Power Amplifier	ZHL-42W+	13440021344		Note1

General Note:

1. Prior to system verification and validation, the path loss from the signal generator to the system check source and the power meter, which includes the amplifier, cable, attenuator and directional coupler, was measured by the network analyzer. The reading of the power meter was offset by the path loss difference between the path to the power meter and the path to the system check source to monitor the actual power level fed to the system check source.

10. System Verification

10.1 Tissue Verification

The following tissue formulations are provided for reference only as some of the parameters have not been thoroughly verified. The composition of ingredients may be modified accordingly to achieve the desired target tissue parameters required for routine SAR evaluation.

Frequency (MHz)	Water (%)	Sugar (%)	Cellulose (%)	Salt (%)	Preventol (%)	DGBE (%)	Conductivity (σ)	Permittivity (ϵ_r)
For Head								
835	40.3	57.9	0.2	1.4	0.2	0	0.90	41.5
1800, 1900, 2000	55.2	0	0	0.3	0	44.5	1.40	40.0
2450	55.0	0	0	0	0	45.0	1.80	39.2
2600	54.8	0	0	0.1	0	45.1	1.96	39.0
For Body								
835	50.8	48.2	0	0.9	0.1	0	0.97	55.2
1800, 1900, 2000	70.2	0	0	0.4	0	29.4	1.52	53.3
2450	68.6	0	0	0	0	31.4	1.95	52.7
2600	68.1	0	0	0.1	0	31.8	2.16	52.5

<Tissue Dielectric Parameter Check Results>

Frequency (MHz)	Tissue Type	Liquid Temp. (°C)	Conductivity (σ)	Permittivity (ϵ_r)	Conductivity Target (σ)	Permittivity Target (ϵ_r)	Delta (σ) (%)	Delta (ϵ_r) (%)	Limit (%)	Date
835	Head	22.6	0.916	41.029	0.90	41.50	1.78	-1.13	±5	2015/10/16
1750	Head	22.8	1.373	41.392	1.37	40.10	0.22	3.22	±5	2015/10/17
1900	Head	22.9	1.421	41.283	1.40	40.00	1.50	3.21	±5	2015/10/17
2450	Head	22.5	1.829	40.081	1.80	39.20	1.61	2.25	±5	2015/10/16
2600	Head	22.8	2.056	37.587	1.96	39.00	4.90	-3.62	±5	2015/10/16
835	Body	22.6	0.998	54.379	0.97	55.20	2.89	-1.49	±5	2015/10/14
1750	Body	22.8	1.522	52.519	1.49	53.40	2.15	-1.65	±5	2015/10/15
1900	Body	22.9	1.512	53.903	1.52	53.30	-0.53	1.13	±5	2015/10/15
2450	Body	22.7	1.992	52.291	1.95	52.70	2.15	-0.78	±5	2015/10/16
2600	Body	22.6	2.165	53.823	2.16	52.50	0.23	2.52	±5	2015/10/14

10.2 System Performance Check Results

Comparing to the original SAR value provided by SPEAG, the verification data should be within its specification of 10 %. Below table shows the target SAR and measured SAR after normalized to 1W input power. The table below indicates the system performance check can meet the variation criterion and the plots can be referred to Appendix A of this report.

Date	Frequency (MHz)	Tissue Type	Input Power (mW)	Dipole S/N	Probe S/N	DAE S/N	Measured SAR (W/kg)	Targeted SAR (W/kg)	Normalized SAR (W/kg)	Deviation (%)
2015/10/16	835	Head	250	4d091	3958	1386	2.29	9.11	9.16	0.55
2015/10/17	1750	Head	250	1069	3958	1386	9.41	37.10	37.64	1.46
2015/10/17	1900	Head	250	5d118	3958	1386	10.30	40.10	41.2	2.74
2015/10/16	2450	Head	250	926	3958	1386	13.40	52.10	53.6	2.88
2015/10/16	2600	Head	250	1061	3958	1386	14.90	56.90	59.6	4.75
2015/10/14	835	Body	250	4d091	3958	1386	2.57	9.60	10.28	7.08
2015/10/15	1750	Body	250	1069	3958	1386	9.11	38.10	36.44	-4.36
2015/10/15	1900	Body	250	5d118	3958	1386	9.28	40.00	37.12	-7.20
2015/10/16	2450	Body	250	926	3819	1303	13.30	51.70	53.2	2.90
2015/10/14	2600	Body	250	1061	3958	1386	13.90	54.90	55.6	1.28

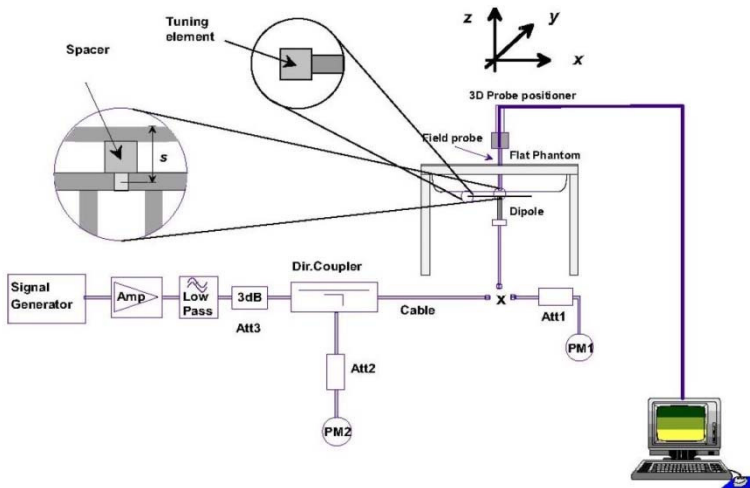


Fig 8.3.1 System Performance Check Setup



Fig 8.3.2 Setup Photo

11. RF Exposure Positions

11.1 Ear and handset reference point

Figure 9.1.1 shows the front, back, and side views of the SAM phantom. The center-of-mouth reference point is labeled “M,” the left ear reference point (ERP) is marked “LE,” and the right ERP is marked “RE.” Each ERP is 15 mm along the B-M (back-mouth) line behind the entrance-to-ear-canal (EEC) point, as shown in Figure 9.1.2 The Reference Plane is defined as passing through the two ear reference points and point M. The line N-F (neck-front), also called the reference pivoting line, is normal to the Reference Plane and perpendicular to both a line passing through RE and LE and the B-M line (see Figure 9.1.3). Both N-F and B-M lines should be marked on the exterior of the phantom shell to facilitate handset positioning. Posterior to the N-F line the ear shape is a flat surface with 6 mm thickness at each ERP, and forward of the N-F line the ear is truncated, as illustrated in Figure 9.1.2. The ear truncation is introduced to preclude the ear lobe from interfering with handset tilt, which could lead to unstable positioning at the cheek.

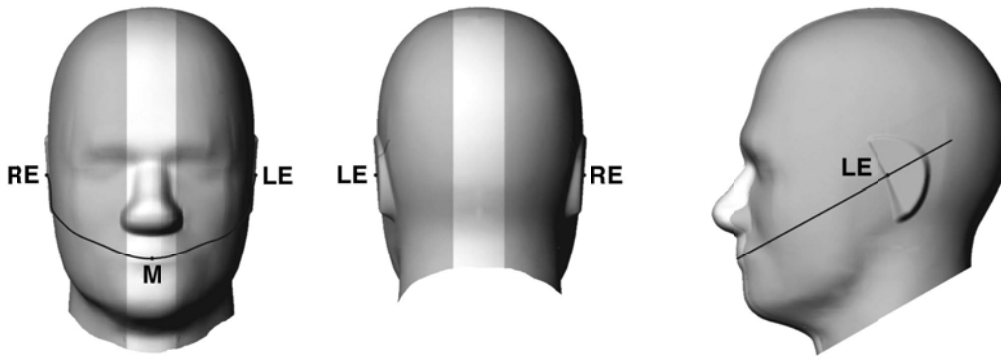


Fig 9.1.1 Front, back, and side views of SAM twin phantom

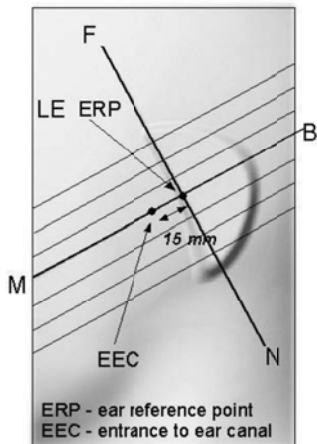


Fig 9.1.2 Close-up side view of phantom showing the ear region.

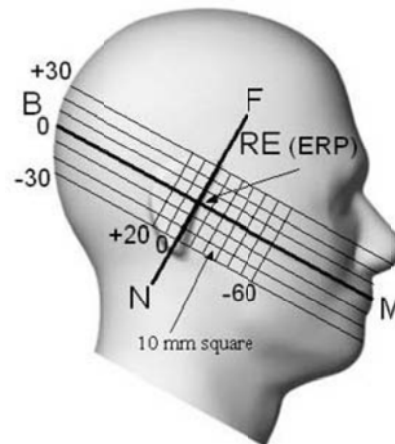


Fig 9.1.3 Side view of the phantom showing relevant markings and seven cross-sectional plane locations

11.2 Definition of the cheek position

1. Ready the handset for talk operation, if necessary. For example, for handsets with a cover piece (flip cover), open the cover. If the handset can transmit with the cover closed, both configurations must be tested.
2. Define two imaginary lines on the handset—the vertical centerline and the horizontal line. The vertical centerline passes through two points on the front side of the handset—the midpoint of the width w_t of the handset at the level of the acoustic output (point A in Figure 9.2.1 and Figure 9.2.2), and the midpoint of the width w_b of the bottom of the handset (point B). The horizontal line is perpendicular to the vertical centerline and passes through the center of the acoustic output (see Figure 9.2.1). The two lines intersect at point A. Note that for many handsets, point A coincides with the center of the acoustic output; however, the acoustic output may be located elsewhere on the horizontal line. Also note that the vertical centerline is not necessarily parallel to the front face of the handset (see Figure 9.2.2), especially for clamshell handsets, handsets with flip covers, and other irregularly-shaped handsets.
3. Position the handset close to the surface of the phantom such that point A is on the (virtual) extension of the line passing through points RE and LE on the phantom (see Figure 9.2.3), such that the plane defined by the vertical centerline and the horizontal line of the handset is approximately parallel to the sagittal plane of the phantom.
4. Translate the handset towards the phantom along the line passing through RE and LE until handset point A touches the pinna at the ERP.
5. While maintaining the handset in this plane, rotate it around the LE-RE line until the vertical centerline is in the plane normal to the plane containing B-M and N-F lines, i.e., the Reference Plane.
6. Rotate the handset around the vertical centerline until the handset (horizontal line) is parallel to the N-F line.
7. While maintaining the vertical centerline in the Reference Plane, keeping point A on the line passing through RE and LE, and maintaining the handset contact with the pinna, rotate the handset about the N-F line until any point on the handset is in contact with a phantom point below the pinna on the cheek. See Figure 9.2.3. The actual rotation angles should be documented in the test report.

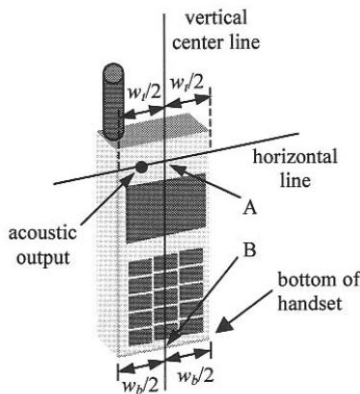


Fig 9.2.1 Handset vertical and horizontal reference lines—“fixed case”

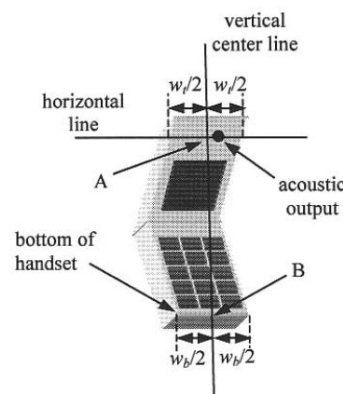


Fig 9.2.2 Handset vertical and horizontal reference lines—“clam-shell case”

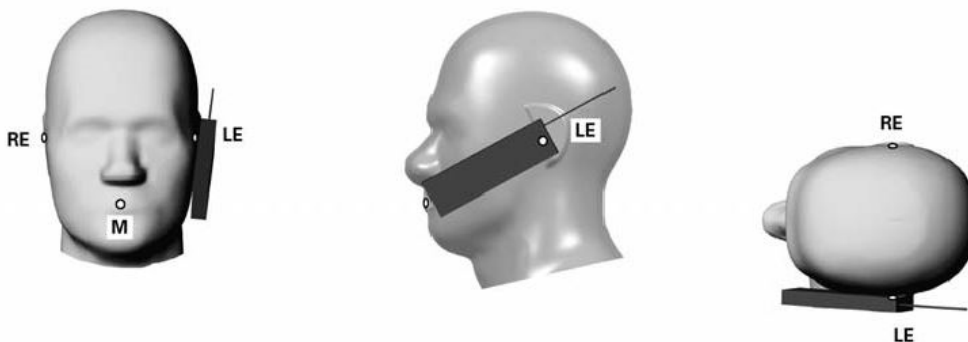


Fig 9.2.3 cheek or touch position. The reference points for the right ear (RE), left ear (LE), and mouth (M), which establish the Reference Plane for handset positioning, are indicated.

11.3 Definition of the tilt position

1. Ready the handset for talk operation, if necessary. For example, for handsets with a cover piece (flip cover), open the cover. If the handset can transmit with the cover closed, both configurations must be tested.
2. While maintaining the orientation of the handset, move the handset away from the pinna along the line passing through RE and LE far enough to allow a rotation of the handset away from the cheek by 15°.
3. Rotate the handset around the horizontal line by 15°.
4. While maintaining the orientation of the handset, move the handset towards the phantom on the line passing through RE and LE until any part of the handset touches the ear. The tilt position is obtained when the contact point is on the pinna. See Figure 9.3.1. If contact occurs at any location other than the pinna, e.g., the antenna at the back of the phantom head, the angle of the handset should be reduced. In this case, the tilt position is obtained if any point on the handset is in contact with the pinna and a second point

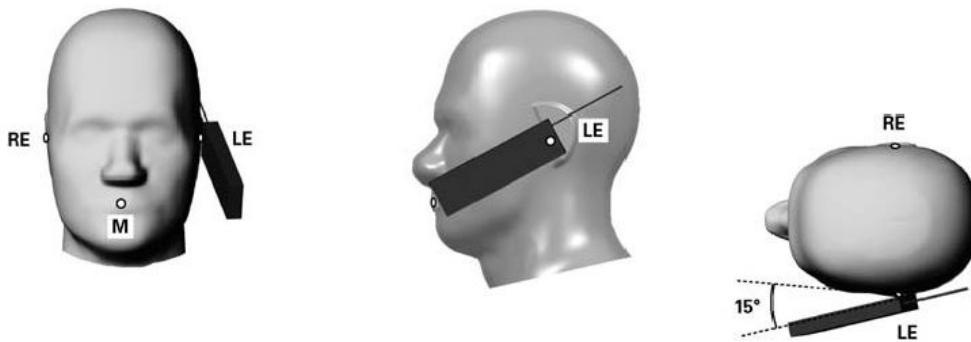


Fig 9.3.1 Tilt position. The reference points for the right ear (RE), left ear (LE), and mouth (M), which define the Reference Plane for handset positioning, are indicated.

11.4 Body Worn Accessory

Body-worn operating configurations are tested with the belt-clips and holsters attached to the device and positioned against a flat phantom in a normal use configuration (see Figure 9.4). Per KDB 648474 D04v01r02, body-worn accessory exposure is typically related to voice mode operations when handsets are carried in body-worn accessories. The body-worn accessory procedures in FCC KDB 447498 D01v05r02 should be used to test for body-worn accessory SAR compliance, without a headset connected to it. This enables the test results for such configuration to be compatible with that required for hotspot mode when the body-worn accessory test separation distance is greater than or equal to that required for hotspot mode, when applicable. When the reported SAR for body-worn accessory, measured without a headset connected to the handset is $< 1.2 \text{ W/kg}$, the highest reported SAR configuration for that wireless mode and frequency band should be repeated for that body-worn accessory with a handset attached to the handset.

Accessories for body-worn operation configurations are divided into two categories: those that do not contain metallic components and those that do contain metallic components. When multiple accessories that do not contain metallic components are supplied with the device, the device is tested with only the accessory that dictates the closest spacing to the body. Then multiple accessories that contain metallic components are test with the device with each accessory. If multiple accessories share an identical metallic component (i.e. the same metallic belt-clip used with different holsters with no other metallic components) only the accessory that dictates the closest spacing to the body is tested.

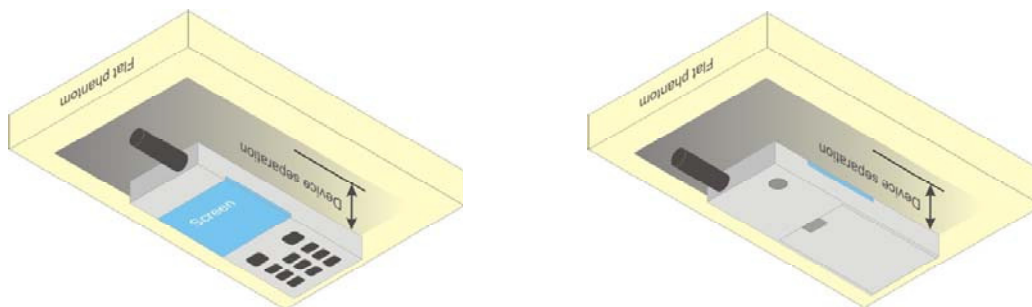


Fig 9.4 Body Worn Position

11.5 Wireless Router

Some battery-operated handsets have the capability to transmit and receive user through simultaneous transmission of WIFI simultaneously with a separate licensed transmitter. The FCC has provided guidance in FCC KDB Publication 941225 D06 v02 where SAR test considerations for handsets ($L \times W \geq 9 \text{ cm} \times 5 \text{ cm}$) are based on a composite test separation distance of 10mm from the front, back and edges of the device containing transmitting antennas within 2.5cm of their edges, determined from general mixed use conditions for this type of devices. Since the hotspot SAR results may overlap with the body-worn accessory SAR requirements, the more conservative configurations can be considered, thus excluding some body-worn accessory SAR tests.

When the user enables the personal wireless router functions for the handset, actual operations include simultaneous transmission of both the WIFI transmitter and another licensed transmitter. Both transmitters often do not transmit at the same transmitting frequency and thus cannot be evaluated for SAR under actual use conditions due to the limitations of the SAR assessment probes. Therefore, SAR must be evaluated for each frequency transmission and mode separately and spatially summed with the WIFI transmitter according to FCC KDB Publication 447498 D01v05r02 publication procedures. The "Portable Hotspot" feature on the handset was NOT activated during SAR assessments, to ensure the SAR measurements were evaluated for a single transmission frequency RF signal at a time.

12. Conducted RF Output Power (Unit: dBm)

<GSM Conducted Power>

1. Per KDB 447498 D01v05r02, the maximum output power channel is used for SAR testing and for further SAR test reduction.
2. Per KDB 941225 D01v03, considering the possibility of e.g. 3rd party VoIP operation for Head and body-worn SAR test reduction for GSM and GPRS and EDGE modes is determined by the source-based time-averaged output power including tune-up tolerance. The mode with highest specified time-averaged output power should be tested for SAR compliance in the applicable exposure conditions. For modes with the same specified maximum output power and tolerance, the higher number time-slot configuration should be tested. Therefore, the EUT was set in GPRS (4Tx slots) for GSM850/GSM1900.
3. Per KDB 941225 D01v03, for Hotspot SAR test reduction for GPRS and EDGE modes is determined by the source-based time-averaged output power including tune-up tolerance, for modes with the same specified maximum output power and tolerance, the higher number time-slot configuration should be tested, therefore, the EUT was set in GPRS (4Tx slots) for GSM850/GSM1900.

Band GSM850	Burst Average Power (dBm)			Tune-up Limit (dBm)	Frame-Average Power (dBm)			Tune-up Limit (dBm)	
	128	189	251		128	189	251		
TX Channel	824.2	836.4	848.8		824.2	836.4	848.8		
Frequency (MHz)	824.2	836.4	848.8		824.2	836.4	848.8		
GSM (GMSK, 1 Tx slot)	32.74	32.73	32.86	33.50	23.74	23.73	23.86	24.50	
GPRS (GMSK, 1 Tx slot)	32.73	32.67	32.77	33.50	23.73	23.67	23.77	24.50	
GPRS (GMSK, 2 Tx slots)	31.66	31.64	31.82	32.50	25.66	25.64	25.82	26.50	
GPRS (GMSK, 3 Tx slots)	30.68	30.65	30.76	31.50	26.42	26.39	26.50	27.24	
GPRS (GMSK, 4 Tx slots)	29.59	29.58	29.82	30.50	26.59	26.58	26.82	27.50	
EDGE (8PSK, 1 Tx slot)	26.13	26.28	26.35	27.00	17.13	17.28	17.35	18.00	
EDGE (8PSK, 2 Tx slots)	25.18	25.29	25.37	26.00	19.18	19.29	19.37	20.00	
EDGE (8PSK, 3 Tx slots)	24.16	24.24	24.25	25.00	19.90	19.98	19.99	20.74	
EDGE (8PSK, 4 Tx slots)	23.04	23.17	23.21	24.00	20.04	20.17	20.21	21.00	
Band GSM1900		Burst Average Power (dBm)			Tune-up Limit (dBm)	Frame-Average Power (dBm)			Tune-up Limit (dBm)
TX Channel		512	661	810		512	661	810	
Frequency (MHz)		1850.2	1880	1909.8		1850.2	1880	1909.8	
GSM (GMSK, 1 Tx slot)		29.26	29.27	29.40	30.00	20.26	20.27	20.40	21.00
GPRS (GMSK, 1 Tx slot)		29.18	29.29	29.36	30.00	20.18	20.29	20.36	21.00
GPRS (GMSK, 2 Tx slots)		28.43	28.52	28.62	29.00	22.43	22.52	22.62	23.00
GPRS (GMSK, 3 Tx slots)		27.45	27.57	27.64	28.00	23.19	23.31	23.38	23.74
GPRS (GMSK, 4 Tx slots)		26.62	26.66	26.74	27.50	23.62	23.66	23.74	24.50
EDGE (8PSK, 1 Tx slot)		25.56	25.60	25.68	26.00	16.56	16.60	16.68	17.00
EDGE (8PSK, 2 Tx slots)		24.67	24.70	24.73	25.00	18.67	18.70	18.73	19.00
EDGE (8PSK, 3 Tx slots)		23.81	23.76	23.80	24.00	19.55	19.50	19.54	19.74
EDGE (8PSK, 4 Tx slots)		22.80	22.73	22.84	23.00	19.80	19.73	19.84	20.00

Remark: The frame-averaged power is linearly scaled the maximum burst averaged power over 8 time slots.

The calculated method are shown as below:

Frame-averaged power = Maximum burst averaged power (1 Tx Slot) - 9 dB

Frame-averaged power = Maximum burst averaged power (2 Tx Slots) - 6 dB

Frame-averaged power = Maximum burst averaged power (3 Tx Slots) - 4.26 dB

Frame-averaged power = Maximum burst averaged power (4 Tx Slots) - 3 dB

<WCDMA Conducted Power>

1. The following tests were conducted according to the test requirements outlines in 3GPP TS 34.121 specification.
2. The procedures in KDB 941225 D01 are applied for 3GPP Rel. 6 HSPA to configure the device in the required sub-test mode(s) to determine SAR test exclusion.
3. For DC-HSDPA, the device was configured according to the H-Set 12, Fixed Reference Channel (FRC) configuration in Table C.8.1.12 of 3GPP TS 34.121-1, with the primary and the secondary serving HS-DSCH Cell enabled during the power measurement.

A summary of these settings are illustrated below:

HSDPA Setup Configuration:

- a. The EUT was connected to Base Station Agilent E5515C referred to the Setup Configuration.
- b. The RF path losses were compensated into the measurements.
- c. A call was established between EUT and Base Station with following setting:
 - i. Set Gain Factors (β_c and β_d) and parameters were set according to each
 - ii. Specific sub-test in the following table, C10.1.4, quoted from the TS 34.121
 - iii. Set RMC 12.2Kbps + HSDPA mode.
 - iv. Set Cell Power = -86 dBm
 - v. Set HS-DSCH Configuration Type to FRC (H-set 1, QPSK)
 - vi. Select HSDPA Uplink Parameters
 - vii. Set Delta ACK, Delta NACK and Delta CQI = 8
 - viii. Set Ack-Nack Repetition Factor to 3
 - ix. Set CQI Feedback Cycle (k) to 4 ms
 - x. Set CQI Repetition Factor to 2
 - xi. Power Ctrl Mode = All Up bits
- d. The transmitted maximum output power was recorded.

Table C.10.1.4: β values for transmitter characteristics tests with HS-DPCCH

Sub-test	β_c	β_d	β_d (SF)	β_c/β_d	β_{HS} (Note 1, Note 2)	CM (dB) (Note 3)	MPR (dB) (Note 3)
1	2/15	15/15	64	2/15	4/15	0.0	0.0
2	12/15 (Note 4)	15/15 (Note 4)	64	12/15 (Note 4)	24/15	1.0	0.0
3	15/15	8/15	64	15/8	30/15	1.5	0.5
4	15/15	4/15	64	15/4	30/15	1.5	0.5

Note 1: $\Delta_{ACK}, \Delta_{NACK}$ and $\Delta_{CQI} = 30/15$ with $\beta_{HS} = 30/15 * \beta_c$.

Note 2: For the HS-DPCCH power mask requirement test in clause 5.2C, 5.7A, and the Error Vector Magnitude (EVM) with HS-DPCCH test in clause 5.13.1A, and HSDPA EVM with phase discontinuity in clause 5.13.1AA, Δ_{ACK} and $\Delta_{NACK} = 30/15$ with $\beta_{HS} = 30/15 * \beta_c$, and $\Delta_{CQI} = 24/15$ with $\beta_{HS} = 24/15 * \beta_c$.

Note 3: CM = 1 for $\beta_c/\beta_d = 12/15$, $\beta_{HS}/\beta_c = 24/15$. For all other combinations of DPCCH, DPDCCH and HS-DPCCH the MPR is based on the relative CM difference. This is applicable for only UEs that support HSDPA in release 6 and later releases.

Note 4: For subtest 2 the β_c/β_d ratio of 12/15 for the TFC during the measurement period (TF1, TF0) is achieved by setting the signalled gain factors for the reference TFC (TF1, TF1) to $\beta_c = 11/15$ and $\beta_d = 15/15$.

Setup Configuration

HSUPA Setup Configuration:

- a. The EUT was connected to Base Station Agilent E5515C referred to the Setup Configuration.
- b. The RF path losses were compensated into the measurements.
- c. A call was established between EUT and Base Station with following setting * :
 - i. Call Configs = 5.2B, 5.9B, 5.10B, and 5.13.2B with QPSK
 - ii. Set the Gain Factors (β_c and β_d) and parameters (AG Index) were set according to each specific sub-test in the following table, C11.1.3, quoted from the TS 34.121
 - iii. Set Cell Power = -86 dBm
 - iv. Set Channel Type = 12.2k + HSPA
 - v. Set UE Target Power
 - vi. Power Ctrl Mode= Alternating bits
 - vii. Set and observe the E-TFCl
 - viii. Confirm that E-TFCl is equal to the target E-TFCl of 75 for sub-test 1, and other subtest's E-TFCl
- d. The transmitted maximum output power was recorded.

Table C.11.1.3: β values for transmitter characteristics tests with HS-DPCCH and E-DCH

Sub-test	β_c	β_d	β_d (SF)	β_c/β_d	β_{HS} (Note 1)	β_{ec}	β_{ed} (Note 5) (Note 6)	β_{ed} (SF)	β_{ed} (Codes)	CM (dB) (Note 2)	MPR (dB) (Note 2)	AG Index (Note 6)	E-TFCl
1	11/15 (Note 3)	15/15 (Note 3)	64	11/15 (Note 3)	22/15	209/25	1309/225	4	1	1.0	0.0	20	75
2	6/15	15/15	64	6/15	12/15	12/15	94/75	4	1	3.0	2.0	12	67
3	15/15	9/15	64	15/9	30/15	30/15	$\beta_{ed1}: 47/15$ $\beta_{ed2}: 47/15$	4 4	2	2.0	1.0	15	92
4	2/15	15/15	64	2/15	4/15	2/15	56/75	4	1	3.0	2.0	17	71
5	15/15 (Note 4)	15/15 (Note 4)	64	15/15 (Note 4)	30/15	24/15	134/15	4	1	1.0	0.0	21	81

Note 1: $\Delta_{ACK}, \Delta_{NACK}$ and $\Delta_{CQI} = 30/15$ with $\beta_{hs} = 30/15 * \beta_c$.

Note 2: CM = 1 for $\beta_c/\beta_d = 12/15$, $\beta_{hs}/\beta_c = 24/15$. For all other combinations of DPDCH, DPCCH, HS-DPCCH, E-DPDCH and E-DPCCH the MPR is based on the relative CM difference.

Note 3: For subtest 1 the β_c/β_d ratio of 11/15 for the TFC during the measurement period (TF1, TF0) is achieved by setting the signalled gain factors for the reference TFC (TF1, TF1) to $\beta_c = 10/15$ and $\beta_d = 15/15$.

Note 4: For subtest 5 the β_c/β_d ratio of 15/15 for the TFC during the measurement period (TF1, TF0) is achieved by setting the signalled gain factors for the reference TFC (TF1, TF1) to $\beta_c = 14/15$ and $\beta_d = 15/15$.

Note 5: In case of testing by UE using E-DPDCH Physical Layer category 1, Sub-test 3 is omitted according to TS25.306 Table 5.1g.

Note 6: β_{ed} can not be set directly, it is set by Absolute Grant Value.

Setup Configuration

DC-HSDPA 3GPP release 8 Setup Configuration:

- a. The EUT was connected to Base Station Agilent E5515C referred to the Setup Configuration below
- b. The RF path losses were compensated into the measurements.
- c. A call was established between EUT and Base Station with following setting:
 - i. Set RMC 12.2Kbps + HSDPA mode.
 - ii. Set Cell Power = -25 dBm
 - iii. Set HS-DSCH Configuration Type to FRC (H-set 12, QPSK)
 - iv. Select HSDPA Uplink Parameters
 - v. Set Gain Factors (β_c and β_d) and parameters were set according to each Specific sub-test in the following table, C10.1.4, quoted from the TS 34.121
 - a). Subtest 1: $\beta_c/\beta_d=2/15$
 - b). Subtest 2: $\beta_c/\beta_d=12/15$
 - c). Subtest 3: $\beta_c/\beta_d=15/8$
 - d). Subtest 4: $\beta_c/\beta_d=15/4$
 - vi. Set Delta ACK, Delta NACK and Delta CQI = 8
 - vii. Set Ack-Nack Repetition Factor to 3
 - viii. Set CQI Feedback Cycle (k) to 4 ms
 - ix. Set CQI Repetition Factor to 2
 - x. Power Ctrl Mode = All Up bits
- d. The transmitted maximum output power was recorded.

The following tests were conducted according to the test requirements outlines in 3GPP TS 34.121 specification. A summary of these settings are illustrated below:

C.8.1.12 Fixed Reference Channel Definition H-Set 12

Table C.8.1.12: Fixed Reference Channel H-Set 12

Parameter	Unit	Value
Nominal Avg. Inf. Bit Rate	kbps	60
Inter-TTI Distance	TTI's	1
Number of HARQ Processes	Processes	6
Information Bit Payload (N_{INF})	Bits	120
Number Code Blocks	Blocks	1
Binary Channel Bits Per TTI	Bits	960
Total Available SML's in UE	SML's	19200
Number of SML's per HARQ Proc.	SML's	3200
Coding Rate		0.15
Number of Physical Channel Codes	Codes	1
Modulation		QPSK
Note 1: The RMC is intended to be used for DC-HSDPA mode and both cells shall transmit with identical parameters as listed in the table. Note 2: Maximum number of transmission is limited to 1, i.e., retransmission is not allowed. The redundancy and constellation version 0 shall be used.		

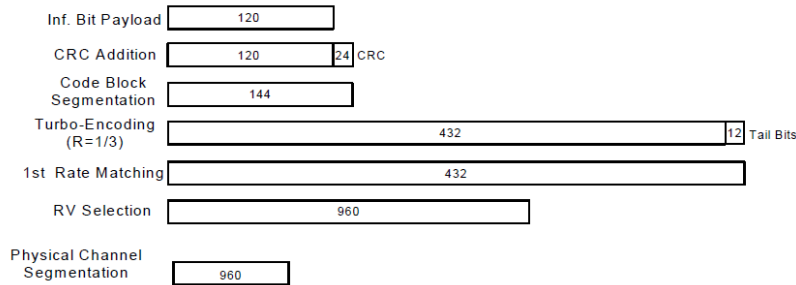


Figure C.8.19: Coding rate for Fixed reference Channel H-Set 12 (QPSK)

Setup Configuration



<WCDMA Conducted Power>

General Note:

1. Per KDB 941225 D01v03, SAR for Head / Hotspot / Body-worn exposure is measured using a 12.2 kbps RMC with TPC bits configured to all "1's".
2. Per KDB 941225 D01v03, RMC 12.2kbps setting is used to evaluate SAR. If the maximum output power and tune-up tolerance specified for production units in HSDPA / HSUPA / DC-HSDPA is $\leq \frac{1}{4}$ dB higher than RMC 12.2Kbps or when the highest reported SAR of the RMC12.2Kbps is scaled by the ratio of specified maximum output power and tune-up tolerance of HSDPA / HSUPA / DC-HSDPA to RMC12.2Kbps and the adjusted SAR is ≤ 1.2 W/kg, SAR measurement is not required for HSDPA / HSUPA / DC-HSDPA.

Band		WCDMA Band V			Tune-up Limit (dBm)	WCDMA Band II			Tune-up Limit (dBm)
TX Channel		4132	4182	4233		9262	9400	9538	
Rx Channel		4357	4407	4458		9662	9800	9938	
Frequency (MHz)		826.4	836.4	846.6		1852.4	1880	1907.6	
3GPP Rel 99	AMR 12.2Kbps	23.91	23.97	24.03	24.50	23.43	23.52	23.38	24.00
3GPP Rel 99	RMC 12.2Kbps	23.92	23.99	24.04	24.50	23.44	23.54	23.40	24.00
3GPP Rel 6	HSDPA Subtest-1	22.25	22.37	22.47	23.00	21.79	21.93	21.83	22.50
3GPP Rel 6	HSDPA Subtest-2	22.33	22.37	22.49	23.00	21.83	22.08	21.86	22.50
3GPP Rel 6	HSDPA Subtest-3	21.76	21.85	21.97	23.00	21.29	21.56	21.34	22.50
3GPP Rel 6	HSDPA Subtest-4	21.84	21.83	21.97	23.00	21.28	21.56	21.34	22.50
3GPP Rel 8	DC-HSDPA Subtest-1	22.15	22.25	22.31	23.00	21.47	21.70	21.59	22.50
3GPP Rel 8	DC-HSDPA Subtest-2	22.07	22.25	22.30	23.00	21.45	21.69	21.56	22.50
3GPP Rel 8	DC-HSDPA Subtest-3	21.62	21.75	21.81	23.00	20.99	21.16	21.02	22.50
3GPP Rel 8	DC-HSDPA Subtest-4	21.69	21.76	21.82	23.00	20.98	21.09	21.04	22.50
3GPP Rel 6	HSUPA Subtest-1	22.23	22.15	21.76	22.50	21.73	21.69	21.47	22.00
3GPP Rel 6	HSUPA Subtest-2	20.87	21.23	21.19	22.50	20.34	20.93	20.23	22.00
3GPP Rel 6	HSUPA Subtest-3	20.90	20.98	21.09	22.50	20.45	20.47	20.90	22.00
3GPP Rel 6	HSUPA Subtest-4	21.48	21.30	21.36	22.50	20.88	21.07	20.88	22.00
3GPP Rel 6	HSUPA Subtest-5	22.40	22.40	22.30	22.50	21.90	21.90	22.00	22.50

**<LTE Conducted Power>****General Note:**

1. Anritsu MT8820C base station simulator was used to setup the connection with EUT; the frequency band, channel bandwidth, RB allocation configuration, modulation type are set in the base station simulator to configure EUT transmitting at maximum power and at different configurations which are requested to be reported to FCC, for conducted power measurement and SAR testing.
2. Per KDB 941225 D05v02r03, when a properly configured base station simulator is used for the SAR and power measurements, spectrum plots for each RB allocation and offset configuration is not required.
3. Per KDB 941225 D05v02r03, start with the largest channel bandwidth and measure SAR for QPSK with 1 RB allocation, using the RB offset and required test channel combination with the highest maximum output power for RB offsets at the upper edge, middle and lower edge of each required test channel.
4. Per KDB 941225 D05v02r03, 50% RB allocation for QPSK SAR testing follows 1RB QPSK allocation procedure.
5. Per KDB 941225 D05v02r03, For QPSK with 100% RB allocation, SAR is not required when the highest maximum output power for 100 % RB allocation is less than the highest maximum output power in 50% and 1 RB allocations and the highest reported SAR for 1 RB and 50% RB allocation are ≤ 0.8 W/kg. Otherwise, SAR is measured for the highest output power channel; and if the reported SAR is > 1.45 W/kg, the remaining required test channels must also be tested.
6. Per KDB 941225 D05v02r03, 16QAM output power for each RB allocation configuration is $>$ not $\frac{1}{2}$ dB higher than the same configuration in QPSK and the reported SAR for the QPSK configuration is ≤ 1.45 W/kg; Per KDB 941225 D05v02r03, 16QAM SAR testing is not required.
7. Per KDB 941225 D05v02r03, Smaller bandwidth output power for each RB allocation configuration is $>$ not $\frac{1}{2}$ dB higher than the same configuration in the largest supported bandwidth, and the reported SAR for the largest supported bandwidth is ≤ 1.45 W/kg; Per KDB 941225 D05v02r03, smaller bandwidth SAR testing is not required.



<LTE Band 4>

BW [MHz]	Modulation	RB Size	RB Offset	Power Low Ch. / Freq.	Power Middle Ch. / Freq.	Power High Ch. / Freq.	Tune up Limit (dBm)	MPR (dB)
Channel				20050	20175	20300		
Frequency (MHz)				1720	1732.5	1745		
20	QPSK	1	0	22.05	22.18	22.29	23.00	0
20	QPSK	1	49	21.97	22.13	22.23		
20	QPSK	1	99	21.99	22.16	22.08		
20	QPSK	50	0	20.78	20.99	21.16	22.00	0-1
20	QPSK	50	24	20.76	20.95	21.07		
20	QPSK	50	50	20.74	20.94	21.03		
20	QPSK	100	0	20.82	20.97	21.12		
20	16QAM	1	0	21.14	21.34	21.52	22.00	0-1
20	16QAM	1	49	21.16	21.37	21.51		
20	16QAM	1	99	21.36	21.48	21.39		
20	16QAM	50	0	19.63	19.88	20.16	21.00	0-2
20	16QAM	50	24	19.78	20.04	20.10		
20	16QAM	50	50	19.79	19.98	20.06		
20	16QAM	100	0	19.90	20.05	19.97		
Channel				20025	20175	20325	Tune up Limit (dBm)	MPR (dB)
Frequency (MHz)				1717.5	1732.5	1747.5		
15	QPSK	1	0	21.96	22.23	22.25	23.00	0
15	QPSK	1	37	21.89	22.24	22.21		
15	QPSK	1	74	22.00	22.23	22.22		
15	QPSK	36	0	20.75	20.93	21.07	22.00	0-1
15	QPSK	36	20	20.82	20.95	21.04		
15	QPSK	36	39	20.77	21.09	21.08		
15	QPSK	75	0	20.64	21.04	20.96		
15	16QAM	1	0	20.87	21.01	21.23	22.00	0-1
15	16QAM	1	37	20.90	21.06	21.22		
15	16QAM	1	74	20.81	21.06	21.11		
15	16QAM	36	0	19.77	19.98	20.02	21.00	0-2
15	16QAM	36	20	19.83	20.00	20.00		
15	16QAM	36	39	19.79	20.06	19.95		
15	16QAM	75	0	19.71	20.05	19.96		
Channel				20000	20175	20350	Tune up Limit (dBm)	MPR (dB)
Frequency (MHz)				1715	1732.5	1750		
10	QPSK	1	0	21.81	22.15	22.28	23.00	0
10	QPSK	1	25	21.83	22.19	22.23		
10	QPSK	1	49	22.03	22.19	22.22		
10	QPSK	25	0	20.80	21.02	21.13	22.00	0-1
10	QPSK	25	12	20.72	21.05	21.07		
10	QPSK	25	25	20.81	21.03	21.13		
10	QPSK	50	0	20.66	20.92	21.02		
10	16QAM	1	0	20.89	21.26	21.47	22.00	0-1
10	16QAM	1	25	21.13	21.34	21.43		
10	16QAM	1	49	20.95	21.30	21.41		
10	16QAM	25	0	19.77	19.97	20.18	21.00	0-2
10	16QAM	25	12	19.72	20.08	19.99		
10	16QAM	25	25	19.86	20.10	20.07		
10	16QAM	50	0	19.70	20.01	19.99		



Channel				19975	20175	20375	Tune up Limit (dBm)	MPR (dB)
Frequency (MHz)				1712.5	1732.5	1752.5		
5	QPSK	1	0	21.92	22.14	22.28	23.00	0
5	QPSK	1	12	21.92	22.19	22.22		
5	QPSK	1	24	21.93	22.25	22.11		
5	QPSK	12	0	20.86	21.18	21.15	22.00	0-1
5	QPSK	12	7	20.83	21.15	21.28		
5	QPSK	12	13	20.85	21.14	21.17		
5	QPSK	25	0	20.74	21.05	21.18		
5	16QAM	1	0	21.12	21.33	21.44	22.00	0-1
5	16QAM	1	12	21.10	21.34	21.48		
5	16QAM	1	24	21.12	21.42	21.40		
5	16QAM	12	0	19.98	20.20	20.26	21.00	0-2
5	16QAM	12	7	19.92	20.18	20.28		
5	16QAM	12	13	19.97	20.28	20.17		
5	16QAM	25	0	19.78	20.19	20.12		
Channel				19965	20175	20385	Tune up Limit (dBm)	MPR (dB)
Frequency (MHz)				1711.5	1732.5	1753.5		
3	QPSK	1	0	21.93	22.19	22.15	23.00	0
3	QPSK	1	8	21.85	22.15	22.16		
3	QPSK	1	14	21.87	22.18	22.12		
3	QPSK	8	0	20.90	21.13	21.18	22.00	0-1
3	QPSK	8	4	20.83	21.16	21.19		
3	QPSK	8	7	20.85	21.13	21.10		
3	QPSK	15	0	20.88	21.13	21.15		
3	16QAM	1	0	20.56	20.80	20.92	22.00	0-1
3	16QAM	1	8	20.52	20.87	20.90		
3	16QAM	1	14	20.62	20.76	20.77		
3	16QAM	8	0	19.93	20.19	20.18	21.00	0-2
3	16QAM	8	4	19.83	20.19	20.18		
3	16QAM	8	7	19.77	20.24	20.08		
3	16QAM	15	0	19.94	20.16	20.18		
Channel				19957	20175	20393	Tune up Limit (dBm)	MPR (dB)
Frequency (MHz)				1710.7	1732.5	1754.3		
1.4	QPSK	1	0	21.86	22.06	21.98	23.00	0
1.4	QPSK	1	3	21.92	22.15	22.09		
1.4	QPSK	1	5	21.95	22.07	22.03		
1.4	QPSK	3	0	21.95	22.26	22.14		
1.4	QPSK	3	1	21.96	22.20	22.15		
1.4	QPSK	3	3	21.90	22.21	22.13		
1.4	QPSK	6	0	20.96	21.21	21.15	22.00	0-1
1.4	16QAM	1	0	20.82	21.38	20.99	22.00	0-1
1.4	16QAM	1	3	20.72	21.01	21.43		
1.4	16QAM	1	5	20.71	21.06	21.04		
1.4	16QAM	3	0	21.00	21.20	21.17		
1.4	16QAM	3	1	21.03	21.27	21.20		
1.4	16QAM	3	3	21.02	21.14	21.22		
1.4	16QAM	6	0	20.02	20.33	20.19	21.00	0-2



<LTE Band 2>

BW [MHz]	Modulation	RB Size	RB Offset	Power Low Ch. / Freq.	Power Middle Ch. / Freq.	Power High Ch. / Freq.	Tune up Limit (dBm)	MPR (dB)
Channel				18700	18900	19100		
Frequency (MHz)				1860	1880	1900		
20	QPSK	1	0	22.01	21.72	21.65	23.00	0
20	QPSK	1	49	22.03	21.94	21.77		
20	QPSK	1	99	22.12	21.98	21.87		
20	QPSK	50	0	20.90	20.88	20.66	22.00	0-1
20	QPSK	50	24	20.78	20.86	20.61		
20	QPSK	50	50	20.75	20.80	20.64		
20	QPSK	100	0	20.90	20.79	20.59		
20	16QAM	1	0	21.26	21.29	21.04	22.00	0-1
20	16QAM	1	49	21.30	21.20	21.03		
20	16QAM	1	99	21.09	21.07	21.11		
20	16QAM	50	0	19.76	19.88	19.64	21.00	0-2
20	16QAM	50	24	19.75	19.85	19.57		
20	16QAM	50	50	19.78	19.71	19.61		
20	16QAM	100	0	19.79	19.74	19.71		
Channel				18675	18900	19125	Tune up Limit (dBm)	MPR (dB)
Frequency (MHz)				1857.5	1880	1902.5		
15	QPSK	1	0	22.03	22.09	21.77	23.00	0
15	QPSK	1	37	22.03	22.07	21.84		
15	QPSK	1	74	22.07	21.89	22.05		
15	QPSK	36	0	20.77	20.75	20.64	22.00	0-1
15	QPSK	36	20	20.84	20.86	20.59		
15	QPSK	36	39	20.85	20.80	20.70		
15	QPSK	75	0	20.76	20.78	20.66		
15	16QAM	1	0	21.09	21.21	20.75	22.00	0-1
15	16QAM	1	37	21.29	20.88	20.69		
15	16QAM	1	74	21.24	21.09	20.70		
15	16QAM	36	0	19.86	19.82	19.56	21.00	0-2
15	16QAM	36	20	19.86	19.94	19.53		
15	16QAM	36	39	19.98	19.79	19.66		
15	16QAM	75	0	19.76	19.90	19.64		
Channel				18650	18900	19150	Tune up Limit (dBm)	MPR (dB)
Frequency (MHz)				1855	1880	1905		
10	QPSK	1	0	21.87	21.87	21.61	23.00	0
10	QPSK	1	25	21.73	21.82	21.63		
10	QPSK	1	49	21.94	21.78	21.42		
10	QPSK	25	0	20.82	20.86	20.66	22.00	0-1
10	QPSK	25	12	20.80	20.91	20.69		
10	QPSK	25	25	20.99	20.99	20.64		
10	QPSK	50	0	20.77	20.86	20.55		
10	16QAM	1	0	20.63	20.90	20.51	22.00	0-1
10	16QAM	1	25	21.02	20.97	20.76		
10	16QAM	1	49	21.13	21.11	20.88		
10	16QAM	25	0	19.79	19.95	19.75	21.00	0-2
10	16QAM	25	12	19.78	19.91	19.66		
10	16QAM	25	25	19.95	19.96	19.62		
10	16QAM	50	0	19.78	19.90	19.63		



Channel				18625	18900	19175	Tune up Limit (dBm)	MPR (dB)
Frequency (MHz)				1852.5	1880	1907.5		
5	QPSK	1	0	21.96	22.01	21.73	23.00	0
5	QPSK	1	12	22.00	21.94	21.89		
5	QPSK	1	24	22.09	21.88	21.72		
5	QPSK	12	0	20.92	20.95	20.79	22.00	0-1
5	QPSK	12	7	20.95	21.00	20.74		
5	QPSK	12	13	20.94	20.98	20.86		
5	QPSK	25	0	20.84	20.90	20.63	22.00	0-1
5	16QAM	1	0	20.82	20.73	20.43		
5	16QAM	1	12	20.74	20.65	20.52		
5	16QAM	1	24	21.23	20.54	20.54	21.00	0-2
5	16QAM	12	0	19.96	19.98	19.83		
5	16QAM	12	7	19.98	20.05	19.99		
5	16QAM	12	13	19.99	20.13	19.79	21.00	0-2
5	16QAM	12	13	19.99	20.13	19.79		
5	16QAM	25	0	19.82	19.83	19.66		
Channel				18615	18900	19185	Tune up Limit (dBm)	MPR (dB)
Frequency (MHz)				1851.5	1880	1908.5		
3	QPSK	1	0	21.92	22.04	21.94	23.00	0
3	QPSK	1	8	21.96	21.99	21.76		
3	QPSK	1	14	21.91	21.96	21.79		
3	QPSK	8	0	20.89	21.01	20.84	22.00	0-1
3	QPSK	8	4	20.90	21.00	20.80		
3	QPSK	8	7	20.91	21.01	20.86		
3	QPSK	15	0	20.85	20.96	20.79	22.00	0-1
3	16QAM	1	0	20.71	20.66	20.91		
3	16QAM	1	8	20.55	20.56	20.25		
3	16QAM	1	14	20.66	20.67	20.46	21.00	0-2
3	16QAM	8	0	19.78	19.83	19.79		
3	16QAM	8	4	19.89	19.99	19.75		
3	16QAM	8	7	19.91	19.91	19.63	21.00	0-2
3	16QAM	8	7	19.91	19.91	19.63		
3	16QAM	15	0	19.90	19.83	19.73		
Channel				18607	18900	19193	Tune up Limit (dBm)	MPR (dB)
Frequency (MHz)				1850.7	1880	1909.3		
1.4	QPSK	1	0	21.94	21.88	21.69	23.00	0
1.4	QPSK	1	3	21.92	22.02	21.75		
1.4	QPSK	1	5	21.85	22.03	21.64		
1.4	QPSK	3	0	21.97	22.01	21.85		
1.4	QPSK	3	1	21.97	22.04	21.86		
1.4	QPSK	3	3	21.93	22.02	21.81		
1.4	QPSK	6	0	20.96	21.09	20.88	22.00	0-1
1.4	16QAM	1	0	20.91	20.89	20.72	22.00	0-1
1.4	16QAM	1	3	20.76	20.83	20.71		
1.4	16QAM	1	5	20.80	20.92	21.00		
1.4	16QAM	3	0	21.12	21.05	20.90		
1.4	16QAM	3	1	21.04	21.09	20.91		
1.4	16QAM	3	3	21.03	21.07	20.88		
1.4	16QAM	6	0	20.01	20.13	19.88	21.00	0-2



<LTE Band 7>

BW [MHz]	Modulation	RB Size	RB Offset	Power Low Ch. / Freq.	Power Middle Ch. / Freq.	Power High Ch. / Freq.	Tune up Limit (dBm)	MPR (dB)
Channel				20850	21100	21350		
Frequency (MHz)				2510	2535	2560		
20	QPSK	1	0	22.45	22.36	22.50	23.00	0
20	QPSK	1	49	22.35	22.26	22.42		
20	QPSK	1	99	22.46	22.65	22.78		
20	QPSK	50	0	21.29	21.32	21.43	22.00	0-1
20	QPSK	50	24	21.15	21.17	21.29		
20	QPSK	50	50	21.12	21.16	21.28		
20	QPSK	100	0	21.10	21.14	21.52		
20	16QAM	1	0	21.18	21.35	21.76	22.00	0-1
20	16QAM	1	49	21.33	21.39	21.82		
20	16QAM	1	99	21.37	21.50	21.66		
20	16QAM	50	0	20.09	20.20	20.42	21.00	0-2
20	16QAM	50	24	20.29	20.19	20.38		
20	16QAM	50	50	20.16	20.19	20.32		
20	16QAM	100	0	20.19	20.19	20.34		
Channel				20825	21100	21375	Tune up Limit (dBm)	MPR (dB)
Frequency (MHz)				2507.5	2535	2562.5		
15	QPSK	1	0	22.13	22.29	22.56	23.00	0
15	QPSK	1	37	22.22	22.37	22.61		
15	QPSK	1	74	22.29	22.37	22.64		
15	QPSK	36	0	21.07	21.19	21.44	22.00	0-1
15	QPSK	36	20	21.05	21.16	21.38		
15	QPSK	36	39	21.08	21.22	21.35		
15	QPSK	75	0	21.00	21.10	21.40		
15	16QAM	1	0	21.41	21.51	21.95	22.00	0-1
15	16QAM	1	37	21.44	21.55	21.49		
15	16QAM	1	74	21.56	21.54	21.76		
15	16QAM	36	0	20.13	20.33	20.51	21.00	0-2
15	16QAM	36	20	20.23	20.21	20.43		
15	16QAM	36	39	20.23	20.20	20.43		
15	16QAM	75	0	20.10	20.16	20.36		



Channel				20800	21100	21400	Tune up Limit (dBm)	MPR (dB)
Frequency (MHz)				2505	2535	2565		
10	QPSK	1	0	22.26	22.27	22.50	23.00	0
10	QPSK	1	25	22.15	22.26	22.55		
10	QPSK	1	49	22.37	22.39	22.55		
10	QPSK	25	0	21.07	21.29	21.47	22.00	0-1
10	QPSK	25	12	21.09	21.19	21.39		
10	QPSK	25	25	21.08	21.26	21.45		
10	QPSK	50	0	20.98	21.10	21.19		
10	16QAM	1	0	20.75	20.92	21.12	22.00	0-1
10	16QAM	1	25	20.85	20.99	21.11		
10	16QAM	1	49	20.94	21.14	21.53		
10	16QAM	25	0	20.14	20.23	20.44	21.00	0-2
10	16QAM	25	12	20.17	20.25	20.40		
10	16QAM	25	25	20.17	20.34	20.45		
10	16QAM	50	0	20.12	20.21	20.26		
Channel				20775	21100	21425	Tune up Limit (dBm)	MPR (dB)
Frequency (MHz)				2502.5	2535	2567.5		
5	QPSK	1	0	22.14	22.22	22.40	23.00	0
5	QPSK	1	12	22.16	22.22	22.50		
5	QPSK	1	24	22.07	22.24	22.53		
5	QPSK	12	0	21.10	21.30	21.46	22.00	0-1
5	QPSK	12	7	21.14	21.31	21.54		
5	QPSK	12	13	21.12	21.33	21.49		
5	QPSK	25	0	21.06	21.26	21.41		
5	16QAM	1	0	21.03	21.21	21.33	22.00	0-1
5	16QAM	1	12	21.04	21.14	21.67		
5	16QAM	1	24	21.10	21.67	21.37		
5	16QAM	12	0	20.27	20.40	20.55	21.00	0-2
5	16QAM	12	7	20.20	20.40	20.66		
5	16QAM	12	13	20.20	20.40	20.63		
5	16QAM	25	0	19.98	20.23	20.38		

**<WLAN Conducted Power>****General Note:**

1. Per KDB 248227 D01v02r01, SAR test reduction is determined according to 802.11 transmission mode configurations and certain exposure conditions with multiple test positions. In the 2.4 GHz band, separate SAR procedures are applied to DSSS and OFDM configurations to simplify DSSS test requirements. For OFDM, in both 2.4 and 5 GHz bands, an initial test configuration must be determined for each standalone and aggregated frequency band, according to the transmission mode configuration with the highest maximum output power specified for production units to perform SAR measurements. If the same highest maximum output power applies to different combinations of channel bandwidths, modulations and data rates, additional procedures are applied to determine which test configurations require SAR measurement. When applicable, an initial test position may be applied to reduce the number of SAR measurements required for next to the ear, UMPC mini-tablet or hotspot mode configurations with multiple test positions.
2. For 2.4 GHz 802.11b DSSS, either the initial test position procedure for multiple exposure test positions or the DSSS procedure for fixed exposure position is applied; these are mutually exclusive. For 2.4 GHz and 5 GHz OFDM configurations, the initial test configuration is applied to measure SAR using either the initial test position procedure for multiple exposure test position configurations or the initial test configuration procedures for fixed exposure test conditions. Based on the reported SAR of the measured configurations and maximum output power of the transmission mode configurations that are not included in the initial test configuration, the subsequent test configuration and initial test position procedures are applied to determine if SAR measurements are required for the remaining OFDM transmission configurations. In general, the number of test channels that require SAR measurement is minimized based on maximum output power measured for the test sample(s).
3. For OFDM transmission configurations in the 2.4 GHz and 5 GHz bands, When the same maximum power is specified for multiple transmission modes in a frequency band, the largest channel bandwidth, lowest order modulation, lowest data rate and lowest order 802.11a/g/n/ac mode is used for SAR measurement, on the highest measured output power channel for each frequency band.
4. DSSS and OFDM configurations are considered separately according to the required SAR procedures. SAR is measured in the initial test position using the 802.11 transmission mode configuration required by the DSSS procedure or initial test configuration and subsequent test configuration(s) according to the OFDM procedures. 18 The initial test position procedure is described in the following:
 - a. When the reported SAR of the initial test position is ≤ 0.4 W/kg, further SAR measurement is not required for the other test positions in that exposure configuration and 802.11 transmission mode combinations within the frequency band or aggregated band.
 - b. When the reported SAR of the test position is > 0.4 W/kg, SAR is repeated for the 802.11 transmission mode configuration tested in the initial test position to measure the subsequent next closet/smallest test separation distance and maximum coupling test position on the highest maximum output power channel, until the report SAR is ≤ 0.8 W/kg or all required test position are tested.
 - c. For all positions/configurations, when the reported SAR is > 0.8 W/kg, SAR is measured for these test positions/configurations on the subsequent next highest measured output power channel(s) until the reported SAR is ≤ 1.2 W/kg or all required channels are tested.



<2.4GHz WLAN>

	Mode	Channel	Frequency (MHz)	Data Rate	Average power (dBm)	Tune-Up Limit	Duty Cycle %
2.4GHz WLAN	802.11b	CH 1	2412	1Mbps	12.31	13.00	100.00
		CH 6	2437		13.26	14.00	
		CH 11	2462		13.55	14.00	
		CH 12	2467		11.69	12.00	
		CH 13	2472		11.80	12.00	
	802.11g	CH 1	2412	6Mbps	10.95	11.00	97.47
		CH 6	2437		11.91	12.00	
		CH 11	2462		11.97	12.00	
		CH 12	2467		11.32	12.00	
		CH 13	2472		11.46	12.00	
	802.11n-HT20	CH 1	2412	MCS0	9.98	10.00	98.16
		CH 6	2437		10.98	11.00	
		CH 11	2462		11.22	12.00	
		CH 12	2467		10.40	11.00	
		CH 13	2472		10.60	11.00	



13. Bluetooth Exclusions Applied

Mode Band	Average power(dBm)	
	Bluetooth v3.0+EDR	Bluetooth v4.0 LE
2.4GHz Bluetooth	7.50	-2.00

Note:

1. Per KDB 447498 D01v05r02, the 1-g and 10-g SAR test exclusion thresholds for 100 MHz to 6 GHz at test separation distances ≤ 50 mm are determined by:

$$[(\text{max. power of channel, including tune-up tolerance, mW}) / (\text{min. test separation distance, mm})] \cdot [\sqrt{f(\text{GHz})}] \leq 3.0 \text{ for 1-g SAR and } \leq 7.5 \text{ for 10-g extremity SAR}$$

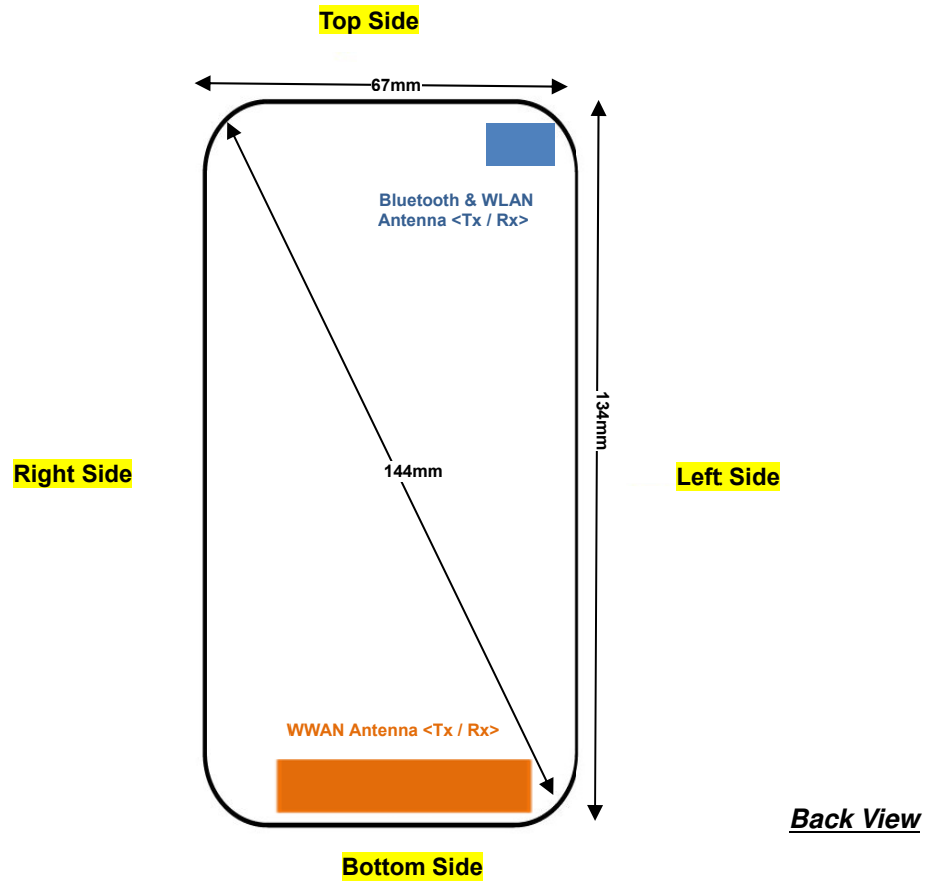
- f(GHz) is the RF channel transmit frequency in GHz
- Power and distance are rounded to the nearest mW and mm before calculation
- The result is rounded to one decimal place for comparison

Bluetooth Max Power (dBm)	Separation Distance (mm)	Frequency (GHz)	exclusion thresholds
7.50	10	2.48	0.9

Note:

Per KDB 447498 D01v05r02, a distance of 10 mm is applied to determine SAR test exclusion. The test exclusion threshold is 0.9 which is ≤ 3, SAR testing is not required.

14. Antenna Location



Distance of the Antenna to the EUT surface/edge						
Antennas	Back	Front	Top Side	Bottom Side	Right Side	Left Side
WWAN	≤ 25mm	≤ 25mm	125mm	≤ 25mm	≤ 25mm	≤ 25mm
BT&WLAN	≤ 25mm	≤ 25mm	≤ 25mm	122mm	47mm	≤ 25mm

Positions for SAR tests; Hotspot mode						
Antennas	Back	Front	Top Side	Bottom Side	Right Side	Left Side
WWAN	Yes	Yes	No	Yes	Yes	Yes
BT&WLAN	Yes	Yes	Yes	No	No	Yes

General Note:

Referring to KDB 941225 D06 v02, when the overall device length and width are ≥ 9cm*5cm, the test distance is 10 mm. SAR must be measured for all sides and surfaces with a transmitting antenna located within 25mm from that surface or edge



15. SAR Test Results

General Note:

1. Per KDB 447498 D01v05r02, the reported SAR is the measured SAR value adjusted for maximum tune-up tolerance.
 - a. Tune-up scaling Factor = tune-up limit power (mW) / EUT RF power (mW), where tune-up limit is the maximum rated power among all production units.
 - b. Reported SAR(W/kg)= Measured SAR(W/kg)*Tune-up Scaling Factor
2. Per KDB 447498 D01v05r02, for each exposure position, testing of other required channels within the operating mode of a frequency band is not required when the *reported* 1-g or 10-g SAR for the mid-band or highest output power channel is:
 - ≤ 0.8 W/kg or 2.0 W/kg, for 1-g or 10-g respectively, when the transmission band is ≤ 100 MHz
 - ≤ 0.6 W/kg or 1.5 W/kg, for 1-g or 10-g respectively, when the transmission band is between 100 MHz and 200 MHz
 - ≤ 0.4 W/kg or 1.0 W/kg, for 1-g or 10-g respectively, when the transmission band is ≥ 200 MHz
3. Per KDB 648474 D04v01r02, when the reported SAR for a body-worn accessory measured without a headset connected to the handset is ≤ 1.2 W/kg, SAR testing with a headset connected to the handset is not required.

GSM Note:

1. Per KDB 941225 D01v03, considering the possibility of e.g. 3rd party VoIP operation for Head and body-worn SAR test reduction for GSM and GPRS and EDGE modes is determined by the source-based time-averaged output power including tune-up tolerance. The mode with highest specified time-averaged output power should be tested for SAR compliance in the applicable exposure conditions. For modes with the same specified maximum output power and tolerance, the higher number time-slot configuration should be tested. Therefore, the EUT was set in GPRS (4Tx slots) for GSM850/GSM1900.
2. Per KDB 941225 D01v03, for Hotspot SAR test reduction for GPRS and EDGE modes is determined by the source-based time-averaged output power including tune-up tolerance, for modes with the same specified maximum output power and tolerance, the higher number time-slot configuration should be tested, therefore, the EUT was set in GPRS (4Tx slots) for GSM850/GSM1900.

UMTS Note:

1. Per KDB 941225 D01v03, SAR for Head / Hotspot / Body-worn exposure is measured using a 12.2 kbps RMC with TPC bits configured to all "1's".
2. Per KDB 941225 D01v03, RMC 12.2kbps setting is used to evaluate SAR. If the maximum output power and tune-up tolerance specified for production units in HSDPA / HSUPA / DC-HSDPA is $\leq \frac{1}{4}$ dB higher than RMC 12.2Kbps or when the highest reported SAR of the RMC12.2Kbps is scaled by the ratio of specified maximum output power and tune-up tolerance of HSDPA / HSUPA / DC-HSDPA to RMC12.2Kbps and the adjusted SAR is ≤ 1.2 W/kg, SAR measurement is not required for HSDPA / HSUPA / DC-HSDPA.

LTE Note:

1. Per KDB 941225 D05v02r03, start with the largest channel bandwidth and measure SAR for QPSK with 1 RB allocation, using the RB offset and required test channel combination with the highest maximum output power for RB offsets at the upper edge, middle and lower edge of each required test channel.
2. Per KDB 941225 D05v02r03, 50% RB allocation for QPSK SAR testing follows 1RB QPSK allocation procedure.
3. Per KDB 941225 D05v02r03, For QPSK with 100% RB allocation, SAR is not required when the highest maximum output power for 100 % RB allocation is less than the highest maximum output power in 50% and 1 RB allocations and the highest reported SAR for 1 RB and 50% RB allocation are ≤ 0.8 W/kg. Otherwise, SAR is measured for the highest output power channel; and if the reported SAR is > 1.45 W/kg, the remaining required test channels must also be tested.
4. Per KDB 941225 D05v02r03, 16QAM output power for each RB allocation configuration is $> \text{not } \frac{1}{2}$ dB higher than the same configuration in QPSK and the reported SAR for the QPSK configuration is ≤ 1.45 W/kg; Per KDB 941225 D05v02r03, 16QAM SAR testing is not required.
5. Per KDB 941225 D05v02r03, Smaller bandwidth output power for each RB allocation configuration is $> \text{not } \frac{1}{2}$ dB higher than the same configuration in the largest supported bandwidth, and the reported SAR for the largest supported bandwidth is ≤ 1.45 W/kg; Per KDB 941225 D05v02r03, smaller bandwidth SAR testing is not required.
6. For LTE B4 the maximum bandwidth does not support three non-overlapping channels, per KDB 941225 D05v02r03, when a device supports overlapping channel assignment in a channel bandwidth configuration, the middle channel of the group of overlapping channels should be selected for testing.



WLAN Note:

1. Per KDB 248227 D01v02r01, for 2.4GHz 802.11g/n SAR testing is not required when the highest reported SAR for DSSS is adjusted by the ratio of OFDM to DSSS specified maximum output power and the adjusted SAR is ≤ 1.2 W/kg.
2. When the reported SAR of the test position is > 0.4 W/kg, SAR is repeated for the 802.11 transmission mode configuration tested in the initial test position to measure the subsequent next closet/smallest test separation distance and maximum coupling test position on the highest maximum output power channel, until the report SAR is ≤ 0.8 W/kg or all required test position are tested.
3. For all positions / configurations, when the reported SAR is > 0.8 W/kg, SAR is measured for these test positions / configurations on the subsequent next highest measured output power channel(s) until the reported SAR is ≤ 1.2 W/kg or all required channels are tested.
4. During SAR testing the WLAN transmission was verified using a spectrum analyzer.



15.1 Head SAR

<GSM SAR>

Plot No.	Band	Mode	Test Position	Ch.	Freq. (MHz)	Average Power (dBm)	Tune-Up Limit (dBm)	Tune-up Scaling Factor	Power Drift (dB)	Measured 1g SAR (W/kg)	Reported 1g SAR (W/kg)
01	GSM850	GPRS(4 Tx slots)	Right Cheek	251	848.8	29.82	30.50	1.169	0.08	0.551	0.644
	GSM850	GPRS(4 Tx slots)	Right Tilted	251	848.8	29.82	30.50	1.169	-0.06	0.350	0.409
	GSM850	GPRS(4 Tx slots)	Left Cheek	251	848.8	29.82	30.50	1.169	-0.09	0.490	0.573
	GSM850	GPRS(4 Tx slots)	Left Tilted	251	848.8	29.82	30.50	1.169	-0.06	0.352	0.412
02	GSM1900	GPRS(4 Tx slots)	Right Cheek	810	1909.8	26.74	27.50	1.191	-0.1	0.352	0.419
	GSM1900	GPRS(4 Tx slots)	Right Tilted	810	1909.8	26.74	27.50	1.191	0.02	0.122	0.145
	GSM1900	GPRS(4 Tx slots)	Left Cheek	810	1909.8	26.74	27.50	1.191	0.02	0.581	0.692
	GSM1900	GPRS(4 Tx slots)	Left Tilted	810	1909.8	26.74	27.50	1.191	-0.01	0.094	0.112

<WCDMA SAR>

Plot No.	Band	Mode	Test Position	Ch.	Freq. (MHz)	Average Power (dBm)	Tune-Up Limit (dBm)	Tune-up Scaling Factor	Power Drift (dB)	Measured 1g SAR (W/kg)	Reported 1g SAR (W/kg)
03	WCDMA Band V	RMC 12.2Kbps	Right Cheek	4233	846.6	24.04	24.50	1.112	0.11	0.306	0.340
	WCDMA Band V	RMC 12.2Kbps	Right Tilted	4233	846.6	24.04	24.50	1.112	-0.03	0.196	0.218
	WCDMA Band V	RMC 12.2Kbps	Left Cheek	4233	846.6	24.04	24.50	1.112	-0.03	0.258	0.287
	WCDMA Band V	RMC 12.2Kbps	Left Tilted	4233	846.6	24.04	24.50	1.112	0.01	0.193	0.215
04	WCDMA Band II	RMC 12.2Kbps	Right Cheek	9400	1880	23.54	24.00	1.112	-0.06	0.430	0.478
	WCDMA Band II	RMC 12.2Kbps	Right Tilted	9400	1880	23.54	24.00	1.112	-0.04	0.155	0.172
	WCDMA Band II	RMC 12.2Kbps	Left Cheek	9400	1880	23.54	24.00	1.112	-0.1	0.714	0.794
	WCDMA Band II	RMC 12.2Kbps	Left Tilted	9400	1880	23.54	24.00	1.112	0.06	0.142	0.158

<LTE SAR>

Plot No.	Band	BW (MHz)	RB Size	RB offset	Modulation	Test Position	Ch.	Freq. (MHz)	Average Power (dBm)	Tune-Up Limit (dBm)	Tune-up Scaling Factor	Power Drift (dB)	Measured 1g SAR (W/kg)	Reported 1g SAR (W/kg)
05	LTE Band 4	20M	1	0	QPSK	Right Cheek	20175	1732.5	22.18	23.00	1.208	-0.08	0.478	0.577
	LTE Band 4	20M	1	0	QPSK	Right Tilted	20175	1732.5	22.18	23.00	1.208	-0.02	0.136	0.164
	LTE Band 4	20M	1	0	QPSK	Left Cheek	20175	1732.5	22.18	23.00	1.208	0.01	0.460	0.556
	LTE Band 4	20M	1	0	QPSK	Left Tilted	20175	1732.5	22.18	23.00	1.208	-0.04	0.164	0.198
	LTE Band 4	20M	50	0	QPSK	Right Cheek	20175	1732.5	20.99	22.00	1.262	0.1	0.360	0.454
	LTE Band 4	20M	50	0	QPSK	Right Tilted	20175	1732.5	20.99	22.00	1.262	0.13	0.097	0.122
	LTE Band 4	20M	50	0	QPSK	Left Cheek	20175	1732.5	20.99	22.00	1.262	0.01	0.353	0.445
	LTE Band 4	20M	50	0	QPSK	Left Tilted	20175	1732.5	20.99	22.00	1.262	-0.02	0.118	0.149
06	LTE Band 2	20M	1	99	QPSK	Right Cheek	18700	1860	22.12	23.00	1.225	-0.05	0.440	0.539
	LTE Band 2	20M	1	99	QPSK	Right Tilted	18700	1860	22.12	23.00	1.225	-0.04	0.139	0.170
	LTE Band 2	20M	1	99	QPSK	Left Cheek	18700	1860	22.12	23.00	1.225	-0.07	0.574	0.703
	LTE Band 2	20M	1	99	QPSK	Left Tilted	18700	1860	22.12	23.00	1.225	-0.12	0.120	0.147
	LTE Band 2	20M	50	0	QPSK	Right Cheek	18700	1860	20.90	22.00	1.288	-0.12	0.355	0.457
	LTE Band 2	20M	50	0	QPSK	Right Tilted	18700	1860	20.90	22.00	1.288	-0.19	0.100	0.129
	LTE Band 2	20M	50	0	QPSK	Left Cheek	18700	1860	20.90	22.00	1.288	0.01	0.405	0.522
	LTE Band 2	20M	50	0	QPSK	Left Tilted	18700	1860	20.90	22.00	1.288	-0.02	0.084	0.108
07	LTE Band 7	20M	1	99	QPSK	Right Cheek	21350	2560	22.78	23.00	1.052	0.08	0.323	0.340
	LTE Band 7	20M	1	99	QPSK	Right Tilted	21350	2560	22.78	23.00	1.052	0.04	0.214	0.225
	LTE Band 7	20M	1	99	QPSK	Left Cheek	21350	2560	22.78	23.00	1.052	-0.09	0.605	0.636
	LTE Band 7	20M	1	99	QPSK	Left Tilted	21350	2560	22.78	23.00	1.052	-0.08	0.156	0.164
	LTE Band 7	20M	50	0	QPSK	Right Cheek	21350	2560	21.43	22.00	1.140	0.06	0.240	0.274
	LTE Band 7	20M	50	0	QPSK	Right Tilted	21350	2560	21.43	22.00	1.140	0.06	0.166	0.189
	LTE Band 7	20M	50	0	QPSK	Left Cheek	21350	2560	21.43	22.00	1.140	-0.06	0.456	0.520
	LTE Band 7	20M	50	0	QPSK	Left Tilted	21350	2560	21.43	22.00	1.140	-0.07	0.120	0.137



<WLAN SAR>

Plot No.	Band	Mode	Test Position	Ch.	Freq. (MHz)	Average Power (dBm)	Tune-Up Limit (dBm)	Tune-up Scaling Factor	Power Drift (dB)	Measured 1g SAR (W/kg)	Reported 1g SAR (W/kg)
08	WLAN 2.4GHz	802.11b 1Mbps	Right Cheek	11	2462	13.55	14.00	1.109	-0.07	0.205	0.227
	WLAN 2.4GHz	802.11b 1Mbps	Right Tilted	11	2462	13.55	14.00	1.109	0.09	0.143	0.159
	WLAN 2.4GHz	802.11b 1Mbps	Left Cheek	11	2462	13.55	14.00	1.109	-0.04	0.077	0.085
	WLAN 2.4GHz	802.11b 1Mbps	Left Tilted	11	2462	13.55	14.00	1.109	0.06	0.069	0.077



15.2 Hotspot SAR

<GSM SAR>

Plot No.	Band	Mode	Test Position	Gap (mm)	Ch.	Freq. (MHz)	Average Power (dBm)	Tune-Up Limit (dBm)	Tune-up Scaling Factor	Power Drift (dB)	Measured 1g SAR (W/kg)	Reported 1g SAR (W/kg)
	GSM850	GPRS(4 Tx slots)	Front	10	251	848.8	29.82	30.50	1.169	-0.13	0.550	0.643
	GSM850	GPRS(4 Tx slots)	Back	10	251	848.8	29.82	30.50	1.169	0.07	0.919	1.075
	GSM850	GPRS(4 Tx slots)	Left Side	10	251	848.8	29.82	30.50	1.169	-0.07	0.740	0.865
	GSM850	GPRS(4 Tx slots)	Right Side	10	251	848.8	29.82	30.50	1.169	-0.04	0.812	0.950
	GSM850	GPRS(4 Tx slots)	Bottom Side	10	251	848.8	29.82	30.50	1.169	-0.11	0.213	0.249
	GSM850	GPRS(4 Tx slots)	Back	10	128	824.2	29.59	30.50	1.233	0.18	0.761	0.938
09	GSM850	GPRS(4 Tx slots)	Back	10	189	836.4	29.58	30.50	1.236	0.07	0.879	1.086
	GSM850	GPRS(4 Tx slots)	Left Side	10	128	824.2	29.59	30.50	1.233	0.02	0.779	0.961
	GSM850	GPRS(4 Tx slots)	Left Side	10	189	836.4	29.58	30.50	1.236	0.17	0.788	0.974
	GSM850	GPRS(4 Tx slots)	Right Side	10	128	824.2	29.59	30.50	1.233	-0.05	0.685	0.845
	GSM850	GPRS(4 Tx slots)	Right Side	10	189	836.4	29.58	30.50	1.236	-0.01	0.781	0.965
	GSM1900	GPRS(4 Tx slots)	Front	10	810	1909.8	26.74	27.50	1.191	0.03	0.835	0.995
10	GSM1900	GPRS(4 Tx slots)	Back	10	810	1909.8	26.74	27.50	1.191	0.01	0.998	1.189
	GSM1900	GPRS(4 Tx slots)	Left Side	10	810	1909.8	26.74	27.50	1.191	-0.05	0.425	0.506
	GSM1900	GPRS(4 Tx slots)	Right Side	10	810	1909.8	26.74	27.50	1.191	-0.03	0.143	0.170
	GSM1900	GPRS(4 Tx slots)	Bottom Side	10	810	1909.8	26.74	27.50	1.191	-0.02	0.992	1.182
	GSM1900	GPRS(4 Tx slots)	Front	10	512	1850.2	26.62	27.50	1.225	0.02	0.823	1.008
	GSM1900	GPRS(4 Tx slots)	Front	10	661	1880	26.66	27.50	1.213	-0.09	0.807	0.979
	GSM1900	GPRS(4 Tx slots)	Back	10	512	1850.2	26.62	27.50	1.225	0.04	0.849	1.040
	GSM1900	GPRS(4 Tx slots)	Back	10	661	1880	26.66	27.50	1.213	0.09	0.899	1.091
	GSM1900	GPRS(4 Tx slots)	Bottom Side	10	512	1850.2	26.62	27.50	1.225	-0.07	0.796	0.975
	GSM1900	GPRS(4 Tx slots)	Bottom Side	10	661	1880	26.66	27.50	1.213	-0.12	0.915	1.110

<WCDMA SAR>

Plot No.	Band	Mode	Test Position	Gap (mm)	Ch.	Freq. (MHz)	Average Power (dBm)	Tune-Up Limit (dBm)	Tune-up Scaling Factor	Power Drift (dB)	Measured 1g SAR (W/kg)	Reported 1g SAR (W/kg)
	WCDMA Band V	RMC12.2Kbps	Front	10	4233	846.6	24.04	24.50	1.112	-0.07	0.305	0.339
11	WCDMA Band V	RMC12.2Kbps	Back	10	4233	846.6	24.04	24.50	1.112	0.07	0.517	0.575
	WCDMA Band V	RMC12.2Kbps	Left Side	10	4233	846.6	24.04	24.50	1.112	-0.13	0.403	0.448
	WCDMA Band V	RMC12.2Kbps	Right Side	10	4233	846.6	24.04	24.50	1.112	0.03	0.456	0.507
	WCDMA Band V	RMC12.2Kbps	Bottom Side	10	4233	846.6	24.04	24.50	1.112	-0.02	0.106	0.118
	WCDMA Band II	RMC12.2Kbps	Front	10	9400	1880	23.54	24.00	1.112	0.01	0.888	0.987
	WCDMA Band II	RMC12.2Kbps	Back	10	9400	1880	23.54	24.00	1.112	0.05	0.985	1.095
	WCDMA Band II	RMC12.2Kbps	Left Side	10	9400	1880	23.54	24.00	1.112	0.03	0.421	0.468
	WCDMA Band II	RMC12.2Kbps	Right Side	10	9400	1880	23.54	24.00	1.112	-0.01	0.145	0.161
	WCDMA Band II	RMC12.2Kbps	Bottom Side	10	9400	1880	23.54	24.00	1.112	0.02	1.070	1.190
	WCDMA Band II	RMC12.2Kbps	Front	10	9262	1852.4	23.44	24.00	1.138	-0.07	0.918	1.044
	WCDMA Band II	RMC12.2Kbps	Front	10	9538	1907.6	23.40	24.00	1.148	0.09	0.841	0.966
	WCDMA Band II	RMC12.2Kbps	Back	10	9262	1852.4	23.44	24.00	1.138	0.08	0.931	1.059
	WCDMA Band II	RMC12.2Kbps	Back	10	9538	1907.6	23.40	24.00	1.148	0.02	1.010	1.160
	WCDMA Band II	RMC12.2Kbps	Bottom Side	10	9262	1852.4	23.44	24.00	1.138	0.02	0.977	1.111
12	WCDMA Band II	RMC12.2Kbps	Bottom Side	10	9538	1907.6	23.40	24.00	1.148	0.07	1.040	1.194



<LTE SAR>

Plot No.	Band	BW (MHz)	RB Size	RB offset	Modulation	Test Position	Gap (mm)	Ch.	Freq. (MHz)	Average Power (dBm)	Tune-Up Limit (dBm)	Tune-up Scaling Factor	Power Drift (dB)	Measured 1g SAR (W/kg)	Reported 1g SAR (W/kg)
	LTE Band 4	20M	1	0	QPSK	Front	10	20175	1732.5	22.18	23.00	1.208	0.13	0.714	0.862
13	LTE Band 4	20M	1	0	QPSK	Back	10	20175	1732.5	22.18	23.00	1.208	0.04	0.732	0.884
	LTE Band 4	20M	1	0	QPSK	Left Side	10	20175	1732.5	22.18	23.00	1.208	-0.05	0.275	0.332
	LTE Band 4	20M	1	0	QPSK	Right Side	10	20175	1732.5	22.18	23.00	1.208	0.01	0.138	0.167
	LTE Band 4	20M	1	0	QPSK	Bottom Side	10	20175	1732.5	22.18	23.00	1.208	-0.09	0.575	0.694
	LTE Band 4	20M	50	0	QPSK	Front	10	20175	1732.5	20.99	22.00	1.262	0.03	0.529	0.668
	LTE Band 4	20M	50	0	QPSK	Back	10	20175	1732.5	20.99	22.00	1.262	0.09	0.557	0.703
	LTE Band 4	20M	50	0	QPSK	Left Side	10	20175	1732.5	20.99	22.00	1.262	0.03	0.209	0.264
	LTE Band 4	20M	50	0	QPSK	Right Side	10	20175	1732.5	20.99	22.00	1.262	-0.02	0.103	0.130
	LTE Band 4	20M	50	0	QPSK	Bottom Side	10	20175	1732.5	20.99	22.00	1.262	0.06	0.429	0.541
	LTE Band 4	20M	100	0	QPSK	Front	10	20175	1732.5	20.97	22.00	1.268	-0.04	0.546	0.692
	LTE Band 4	20M	100	0	QPSK	Back	10	20175	1732.5	20.97	22.00	1.268	-0.05	0.575	0.729
	LTE Band 2	20M	1	99	QPSK	Front	10	18700	1860	22.12	23.00	1.225	-0.05	0.714	0.874
	LTE Band 2	20M	1	99	QPSK	Back	10	18700	1860	22.12	23.00	1.225	0.03	0.691	0.846
	LTE Band 2	20M	1	99	QPSK	Left Side	10	18700	1860	22.12	23.00	1.225	0.01	0.313	0.383
	LTE Band 2	20M	1	99	QPSK	Right Side	10	18700	1860	22.12	23.00	1.225	-0.06	0.106	0.130
	LTE Band 2	20M	1	99	QPSK	Bottom Side	10	18700	1860	22.12	23.00	1.225	-0.05	0.748	0.916
	LTE Band 2	20M	1	99	QPSK	Front	10	18900	1880	21.98	23.00	1.265	-0.06	0.698	0.883
	LTE Band 2	20M	1	99	QPSK	Front	10	19100	1900	21.87	23.00	1.297	-0.01	0.647	0.839
	LTE Band 2	20M	1	99	QPSK	Back	10	18900	1880	21.98	23.00	1.265	0.01	0.669	0.846
	LTE Band 2	20M	1	99	QPSK	Back	10	19100	1900	21.87	23.00	1.297	0.03	0.740	0.960
	LTE Band 2	20M	1	99	QPSK	Bottom Side	10	18900	1880	21.98	23.00	1.265	-0.02	0.765	0.968
14	LTE Band 2	20M	1	99	QPSK	Bottom Side	10	19100	1900	21.87	23.00	1.297	-0.02	0.797	1.034
	LTE Band 2	20M	50	0	QPSK	Front	10	18700	1860	20.90	22.00	1.288	-0.07	0.549	0.707
	LTE Band 2	20M	50	0	QPSK	Back	10	18700	1860	20.90	22.00	1.288	0.09	0.533	0.687
	LTE Band 2	20M	50	0	QPSK	Left Side	10	18700	1860	20.90	22.00	1.288	0.09	0.244	0.314
	LTE Band 2	20M	50	0	QPSK	Right Side	10	18700	1860	20.90	22.00	1.288	-0.14	0.081	0.104
	LTE Band 2	20M	50	0	QPSK	Bottom Side	10	18700	1860	20.90	22.00	1.288	-0.02	0.573	0.738
	LTE Band 2	20M	100	0	QPSK	Front	10	18700	1860	20.90	22.00	1.288	-0.03	0.546	0.703
	LTE Band 2	20M	100	0	QPSK	Back	10	18700	1860	20.90	22.00	1.288	0.08	0.546	0.703
	LTE Band 2	20M	100	0	QPSK	Bottom Side	10	18700	1860	20.90	22.00	1.288	-0.1	0.565	0.728
	LTE Band 7	20M	1	99	QPSK	Front	10	21350	2560	22.78	23.00	1.052	-0.06	0.295	0.310
15	LTE Band 7	20M	1	99	QPSK	Back	10	21350	2560	22.78	23.00	1.052	-0.07	0.661	0.695
	LTE Band 7	20M	1	99	QPSK	Left Side	10	21350	2560	22.78	23.00	1.052	0.15	0.367	0.386
	LTE Band 7	20M	1	99	QPSK	Right Side	10	21350	2560	22.78	23.00	1.052	-0.1	0.016	0.017
	LTE Band 7	20M	1	99	QPSK	Bottom Side	10	21350	2560	22.78	23.00	1.052	-0.09	0.551	0.580
	LTE Band 7	20M	50	0	QPSK	Front	10	21350	2560	21.43	22.00	1.140	-0.01	0.223	0.254
	LTE Band 7	20M	50	0	QPSK	Back	10	21350	2560	21.43	22.00	1.140	-0.08	0.518	0.591
	LTE Band 7	20M	50	0	QPSK	Left Side	10	21350	2560	21.43	22.00	1.140	-0.04	0.266	0.303
	LTE Band 7	20M	50	0	QPSK	Right Side	10	21350	2560	21.43	22.00	1.140	-0.04	0.013	0.015
	LTE Band 7	20M	50	0	QPSK	Bottom Side	10	21350	2560	21.43	22.00	1.140	0.01	0.409	0.466



<WLAN SAR>

Plot No.	Band	Mode	Test Position	Gap (mm)	Ch.	Freq. (MHz)	Average Power (dBm)	Tune-Up Limit (dBm)	Tune-up Scaling Factor	Power Drift (dB)	Measured 1g SAR (W/kg)	Reported 1g SAR (W/kg)
	WLAN 2.4GHz	802.11b 1Mbps	Front	10	11	2462	13.55	14.00	1.109	-0.01	0.071	0.079
16	WLAN 2.4GHz	802.11b 1Mbps	Back	10	11	2462	13.55	14.00	1.109	-0.08	0.142	0.158
	WLAN 2.4GHz	802.11b 1Mbps	Left Side	10	11	2462	13.55	14.00	1.109	0.04	0.062	0.069
	WLAN 2.4GHz	802.11b 1Mbps	Top Side	10	11	2462	13.55	14.00	1.109	0.15	0.067	0.074



15.3 Body Worn Accessory SAR

<GSM SAR>

Plot No.	Band	Mode	Test Position	Gap (mm)	Ch.	Freq. (MHz)	Average Power (dBm)	Tune-Up Limit (dBm)	Tune-up Scaling Factor	Power Drift (dB)	Measured 1g SAR (W/kg)	Reported 1g SAR (W/kg)
	GSM850	GPRS(4 Tx slots)	Front	10	251	848.8	29.82	30.50	1.169	-0.13	0.550	0.643
	GSM850	GPRS(4 Tx slots)	Back	10	251	848.8	29.82	30.50	1.169	0.07	0.919	1.075
	GSM850	GPRS(4 Tx slots)	Back	10	128	824.2	29.59	30.50	1.233	0.18	0.761	0.938
09	GSM850	GPRS(4 Tx slots)	Back	10	189	836.4	29.58	30.50	1.236	0.07	0.879	1.086
	GSM1900	GPRS(4 Tx slots)	Front	10	810	1909.8	26.74	27.50	1.191	0.03	0.835	0.995
10	GSM1900	GPRS(4 Tx slots)	Back	10	810	1909.8	26.74	27.50	1.191	0.01	0.998	1.189
	GSM1900	GPRS(4 Tx slots)	Front	10	512	1850.2	26.62	27.50	1.225	0.02	0.823	1.008
	GSM1900	GPRS(4 Tx slots)	Front	10	661	1880	26.66	27.50	1.213	-0.09	0.807	0.979
	GSM1900	GPRS(4 Tx slots)	Back	10	512	1850.2	26.62	27.50	1.225	0.04	0.849	1.040
	GSM1900	GPRS(4 Tx slots)	Back	10	661	1880	26.66	27.50	1.213	0.09	0.899	1.091

<WCDMA SAR>

Plot No.	Band	Mode	Test Position	Gap (mm)	Ch.	Freq. (MHz)	Average Power (dBm)	Tune-Up Limit (dBm)	Tune-up Scaling Factor	Power Drift (dB)	Measured 1g SAR (W/kg)	Reported 1g SAR (W/kg)
	WCDMA Band V	RMC12.2Kbps	Front	10	4233	846.6	24.04	24.50	1.112	-0.07	0.305	0.339
11	WCDMA Band V	RMC12.2Kbps	Back	10	4233	846.6	24.04	24.50	1.112	0.07	0.517	0.575
	WCDMA Band II	RMC12.2Kbps	Front	10	9400	1880	23.54	24.00	1.112	0.01	0.888	0.987
	WCDMA Band II	RMC12.2Kbps	Back	10	9400	1880	23.54	24.00	1.112	0.05	0.985	1.095
	WCDMA Band II	RMC12.2Kbps	Front	10	9262	1852.4	23.44	24.00	1.138	-0.07	0.918	1.044
	WCDMA Band II	RMC12.2Kbps	Front	10	9538	1907.6	23.40	24.00	1.148	0.09	0.841	0.966
	WCDMA Band II	RMC12.2Kbps	Back	10	9262	1852.4	23.44	24.00	1.138	0.08	0.931	1.059
17	WCDMA Band II	RMC12.2Kbps	Back	10	9538	1907.6	23.40	24.00	1.148	0.02	1.010	1.160

<LTE SAR>

Plot No.	Band	BW (MHz)	RB Size	RB offset	Modulation	Test Position	Gap (mm)	Ch.	Freq. (MHz)	Average Power (dBm)	Tune-Up Limit (dBm)	Tune-up Scaling Factor	Power Drift (dB)	Measured 1g SAR (W/kg)	Reported 1g SAR (W/kg)
	LTE Band 4	20M	1	0	QPSK	Front	10	20175	1732.5	22.18	23.00	1.208	0.13	0.714	0.862
13	LTE Band 4	20M	1	0	QPSK	Back	10	20175	1732.5	22.18	23.00	1.208	0.04	0.732	0.884
	LTE Band 4	20M	50	0	QPSK	Front	10	20175	1732.5	20.99	22.00	1.262	0.03	0.529	0.668
	LTE Band 4	20M	50	0	QPSK	Back	10	20175	1732.5	20.99	22.00	1.262	0.09	0.557	0.703
	LTE Band 4	20M	100	0	QPSK	Front	10	20175	1732.5	20.97	22.00	1.268	-0.04	0.546	0.692
	LTE Band 4	20M	100	0	QPSK	Back	10	20175	1732.5	20.97	22.00	1.268	-0.05	0.575	0.729
	LTE Band 2	20M	1	99	QPSK	Front	10	18700	1860	22.12	23.00	1.225	-0.05	0.714	0.874
	LTE Band 2	20M	1	99	QPSK	Back	10	18700	1860	22.12	23.00	1.225	0.03	0.691	0.846
	LTE Band 2	20M	1	99	QPSK	Front	10	18900	1880	21.98	23.00	1.265	-0.06	0.698	0.883
	LTE Band 2	20M	1	99	QPSK	Front	10	19100	1900	21.87	23.00	1.297	-0.01	0.647	0.839
	LTE Band 2	20M	1	99	QPSK	Back	10	18900	1880	21.98	23.00	1.265	0.01	0.669	0.846
18	LTE Band 2	20M	1	99	QPSK	Back	10	19100	1900	21.87	23.00	1.297	0.03	0.740	0.960
	LTE Band 2	20M	50	0	QPSK	Front	10	18700	1860	20.90	22.00	1.288	-0.07	0.549	0.707
	LTE Band 2	20M	50	0	QPSK	Back	10	18700	1860	20.90	22.00	1.288	0.09	0.533	0.687
	LTE Band 2	20M	100	0	QPSK	Front	10	18700	1860	20.90	22.00	1.288	-0.03	0.546	0.703
	LTE Band 2	20M	100	0	QPSK	Back	10	18700	1860	20.90	22.00	1.288	0.08	0.546	0.703
	LTE Band 7	20M	1	99	QPSK	Front	10	21350	2560	22.78	23.00	1.052	-0.06	0.295	0.310
15	LTE Band 7	20M	1	99	QPSK	Back	10	21350	2560	22.78	23.00	1.052	-0.07	0.661	0.695
	LTE Band 7	20M	50	0	QPSK	Front	10	21350	2560	21.43	22.00	1.140	-0.01	0.223	0.254
	LTE Band 7	20M	50	0	QPSK	Back	10	21350	2560	21.43	22.00	1.140	-0.08	0.518	0.591



<WLAN SAR>

Plot No.	Band	Mode	Test Position	Gap (mm)	Ch.	Freq. (MHz)	Average Power (dBm)	Tune-Up Limit (dBm)	Tune-up Scaling Factor	Power Drift (dB)	Measured 1g SAR (W/kg)	Reported 1g SAR (W/kg)
	WLAN 2.4GHz	802.11b 1Mbps	Front	10	11	2462	13.55	14.00	1.109	-0.01	0.071	0.079
16	WLAN 2.4GHz	802.11b 1Mbps	Back	10	11	2462	13.55	14.00	1.109	-0.08	0.142	0.158

15.4 Repeated SAR Measurement

No.	Band	Mode	Test Position	Gap (cm)	Ch.	Freq. (MHz)	Average Power (dBm)	Tune-Up Limit (dBm)	Tune-up Scaling Factor	Power Drift (dB)	Measured 1g SAR (W/kg)	Ratio	Reported 1g SAR (W/kg)
1st	GSM850	GPRS(4 Tx slots)	Back	10	251	848.8	29.82	30.50	1.169	0.07	0.919	1	1.075
2nd	GSM850	GPRS(4 Tx slots)	Back	10	251	848.8	29.82	30.50	1.169	0.14	0.909	1.011	1.063
1st	WCDMA Band II	RMC12.2Kbps	Bottom Side	10	9400	1880	23.54	24.00	1.112	0.02	1.070	1	1.190
2nd	WCDMA Band II	RMC12.2Kbps	Bottom Side	10	9400	1880	23.54	24.00	1.112	-0.07	1.050	1.019	1.167

General Note:

1. Per KDB 865664 D01v01r04, for each frequency band, repeated SAR measurement is required only when the measured SAR is $\geq 0.8W/kg$.
2. Per KDB 865664 D01v01r04, if the ratio among the repeated measurement is ≤ 1.2 and the measured SAR $< 1.45W/kg$, only one repeated measurement is required.
3. The ratio is the difference in percentage between original and repeated *measured SAR*.
4. All measurement SAR result is scaled-up to account for tune-up tolerance and is compliant.

16. Simultaneous Transmission Analysis

NO.	Simultaneous Transmission Configurations	Portable Handset			Note
		Head	Body-worn	Hotspot	
1.	GSM Voice + WLAN2.4GHz	Yes	Yes		
2.	GPRS/EDGE + WLAN2.4GHz	Yes	Yes	Yes	Hotspot
3.	WCDMA + WLAN2.4GHz	Yes	Yes	Yes	Hotspot
4.	LTE + WLAN2.4GHz	Yes	Yes	Yes	Hotspot
5.	GSM Voice + Bluetooth		Yes		
6.	GPRS/EDGE + Bluetooth		Yes		WWAN VoIP
7.	WCDMA+ Bluetooth		Yes		WWAN VoIP
8.	LTE + Bluetooth		Yes		WWAN VoIP

General Note:

1. This device supported VoIP in GPRS, EGPRS, WCDMA and LTE (e.g. 3rd party VoIP).
2. This device 2.4GHz WLAN supports Hotspot operation.
3. WLAN and Bluetooth share the same antenna, and cannot transmit simultaneously.
4. EUT will choose each GSM, WCDMA and LTE according to the network signal condition; therefore, they will not operate simultaneously at any moment.
5. The Scaled SAR summation is calculated based on the same configuration and test position.
6. Per KDB 447498 D01v05r02, simultaneous transmission SAR is compliant if,
 - i) Scalar SAR summation < 1.6W/kg.
 - ii) $SPLSR = (SAR_1 + SAR_2)^{1.5} / (min. separation distance, mm)$, and the peak separation distance is determined from the square root of $[(x_1-x_2)^2 + (y_1-y_2)^2 + (z_1-z_2)^2]$, where (x_1, y_1, z_1) and (x_2, y_2, z_2) are the coordinates of the extrapolated peak SAR locations in the zoom scan.
 - iii) If $SPLSR \leq 0.04$, simultaneously transmission SAR measurement is not necessary.
 - iv) Simultaneously transmission SAR measurement, and the reported multi-band SAR < 1.6W/kg.
7. For simultaneous transmission analysis, Bluetooth SAR is estimated per KDB 447498 D01v05r02 based on the formula below.
 - i) $(max. power of channel, including tune-up tolerance, mW) / (min. test separation distance, mm) \cdot [\sqrt{f(GHz)/x}] W/kg$ for test separation distances ≤ 50 mm; where $x = 7.5$ for 1-g SAR, and $x = 18.75$ for 10-g SAR.
 - ii) When the minimum separation distance is < 5mm, the distance is used 5mm to determine SAR test exclusion.
 - iii) 0.4 W/kg for 1-g SAR and 1.0 W/kg for 10-g SAR, when the test separation distances is > 50 mm.

Bluetooth Max Power	Exposure Position	Body worn
	Test separation	10 mm
7.50dBm	Estimated SAR (W/kg)	0.126 W/kg



16.1 Head Exposure Conditions

<WWAN + WLAN 2.4GHz>

WWAN Band		Exposure Position	WWAN	WLAN	Summed SAR (W/kg)	SPLSR	Case No
			Max. WWAN SAR (W/kg)	Max. WLAN SAR (W/kg)			
GSM	GSM850	Right Cheek	0.644	0.227	0.87		
		Right Tilted	0.409	0.159	0.57		
		Left Cheek	0.573	0.085	0.66		
		Left Tilted	0.412	0.077	0.49		
	GSM1900	Right Cheek	0.419	0.227	0.65		
		Right Tilted	0.145	0.159	0.30		
		Left Cheek	0.692	0.085	0.78		
		Left Tilted	0.112	0.077	0.19		
WCDMA	Band V	Right Cheek	0.340	0.227	0.57		
		Right Tilted	0.218	0.159	0.38		
		Left Cheek	0.287	0.085	0.37		
		Left Tilted	0.215	0.077	0.29		
	Band II	Right Cheek	0.478	0.227	0.71		
		Right Tilted	0.172	0.159	0.33		
		Left Cheek	0.794	0.085	0.88		
		Left Tilted	0.158	0.077	0.24		
LTE	Band 4	Right Cheek	0.577	0.227	0.80		
		Right Tilted	0.164	0.159	0.32		
		Left Cheek	0.556	0.085	0.64		
		Left Tilted	0.198	0.077	0.28		
	Band 2	Right Cheek	0.539	0.227	0.77		
		Right Tilted	0.170	0.159	0.33		
		Left Cheek	0.703	0.085	0.79		
		Left Tilted	0.147	0.077	0.22		
	Band 7	Right Cheek	0.340	0.227	0.57		
		Right Tilted	0.225	0.159	0.38		
		Left Cheek	0.636	0.085	0.72		
		Left Tilted	0.164	0.077	0.24		



16.2 Hotspot Exposure Conditions

<WWAN + WLAN 2.4GHz>

WWAN Band	Exposure Position	WWAN	WLAN	Summed SAR (W/kg)	SPLSR	Case No
		Max. WWAN SAR (W/kg)	Max. WLAN SAR (W/kg)			
GSM	GSM850	Front	0.643	0.079	0.72	
		Back	1.086	0.158	1.24	
		Left side	0.974	0.069	1.04	
		Right side	0.965		0.97	
		Top side		0.074	0.07	
		Bottom side	0.249		0.25	
	GSM1900	Front	1.008	0.079	1.09	
		Back	1.189	0.158	1.35	
		Left side	0.506	0.069	0.58	
		Right side	0.170		0.17	
		Top side		0.074	0.07	
		Bottom side	1.182		1.18	
WCDMA	Band V	Front	0.339	0.079	0.42	
		Back	0.575	0.158	0.73	
		Left side	0.448	0.069	0.52	
		Right side	0.507		0.51	
		Top side		0.074	0.07	
		Bottom side	0.118		0.12	
	Band II	Front	1.044	0.079	1.12	
		Back	1.160	0.158	1.32	
		Left side	0.468	0.069	0.54	
		Right side	0.161		0.16	
		Top side		0.074	0.07	
		Bottom side	1.194		1.19	
LTE	Band 4	Front	0.862	0.079	0.94	
		Back	0.884	0.158	1.04	
		Left side	0.332	0.069	0.40	
		Right side	0.167		0.17	
		Top side		0.074	0.07	
		Bottom side	0.694		0.69	
	Band 2	Front	0.883	0.079	0.96	
		Back	0.960	0.158	1.12	
		Left side	0.383	0.069	0.45	
		Right side	0.130		0.13	
		Top side		0.074	0.07	
		Bottom side	1.034		1.03	
	Band 7	Front	0.310	0.079	0.39	
		Back	0.695	0.158	0.85	
		Left side	0.386	0.069	0.46	
		Right side	0.017		0.02	
		Top side		0.074	0.07	
		Bottom side	0.580		0.58	



16.3 Body-Worn Accessory Exposure Conditions

<WWAN + WLAN 2.4GHz>

WWAN Band		Exposure Position	WWAN	WLAN	Summed SAR (W/kg)	SPLSR	Case No
			Max. WWAN SAR (W/kg)	Max. WLAN SAR (W/kg)			
GSM	GSM850	Front	0.643	0.079	0.72		
		Back	1.086	0.158	1.24		
	GSM1900	Front	1.008	0.079	1.09		
		Back	1.189	0.158	1.35		
WCDMA	Band V	Front	0.339	0.079	0.42		
		Back	0.575	0.158	0.73		
	Band II	Front	1.044	0.079	1.12		
		Back	1.160	0.158	1.32		
LTE	Band 4	Front	0.862	0.079	0.94		
		Back	0.884	0.158	1.04		
	Band 2	Front	0.883	0.079	0.96		
		Back	0.960	0.158	1.12		
	Band 7	Front	0.310	0.079	0.39		
		Back	0.695	0.158	0.85		

<WWAN + Bluetooth>

WWAN Band		Exposure Position	WWAN	Bluetooth	Summed SAR (W/kg)	SPLSR	Case No
			Max. WWAN SAR (W/kg)	Bluetooth SAR (W/kg)			
GSM	GSM850	Front	0.643	0.126	0.77		
		Back	1.086	0.126	1.21		
	GSM1900	Front	1.008	0.126	1.13		
		Back	1.189	0.126	1.32		
WCDMA	Band V	Front	0.339	0.126	0.47		
		Back	0.575	0.126	0.70		
	Band II	Front	1.044	0.126	1.17		
		Back	1.160	0.126	1.29		
LTE	Band 4	Front	0.862	0.126	0.99		
		Back	0.884	0.126	1.01		
	Band 2	Front	0.883	0.126	1.01		
		Back	0.960	0.126	1.09		
	Band 7	Front	0.310	0.126	0.44		
		Back	0.695	0.126	0.82		

Test Engineer : Luke Lu

17. Uncertainty Assessment

The component of uncertainty may generally be categorized according to the methods used to evaluate them. The evaluation of uncertainty by the statistical analysis of a series of observations is termed a Type A evaluation of uncertainty. The evaluation of uncertainty by means other than the statistical analysis of a series of observation is termed a Type B evaluation of uncertainty. Each component of uncertainty, however evaluated, is represented by an estimated standard deviation, termed standard uncertainty, which is determined by the positive square root of the estimated variance.

A Type A evaluation of standard uncertainty may be based on any valid statistical method for treating data. This includes calculating the standard deviation of the mean of a series of independent observations; using the method of least squares to fit a curve to the data in order to estimate the parameter of the curve and their standard deviations; or carrying out an analysis of variance in order to identify and quantify random effects in certain kinds of measurement.

A type B evaluation of standard uncertainty is typically based on scientific judgment using all of the relevant information available. These may include previous measurement data, experience, and knowledge of the behavior and properties of relevant materials and instruments, manufacture’s specification, data provided in calibration reports and uncertainties assigned to reference data taken from handbooks. Broadly speaking, the uncertainty is either obtained from an outdoor source or obtained from an assumed distribution, such as the normal distribution, rectangular or triangular distributions indicated in table below.

Uncertainty Distributions	Normal	Rectangular	Triangular	U-Shape
Multi-plying Factor ^(a)	1/ κ ^(b)	1/ $\sqrt{3}$	1/ $\sqrt{6}$	1/ $\sqrt{2}$

(a) standard uncertainty is determined as the product of the multiplying factor and the estimated range of variations in the measured quantity

(b) κ is the coverage factor

Table 17.1. Standard Uncertainty for Assumed Distribution

The combined standard uncertainty of the measurement result represents the estimated standard deviation of the result. It is obtained by combining the individual standard uncertainties of both Type A and Type B evaluation using the usual “root-sum-squares” (RSS) methods of combining standard deviations by taking the positive square root of the estimated variances.

Expanded uncertainty is a measure of uncertainty that defines an interval about the measurement result within which the measured value is confidently believed to lie. It is obtained by multiplying the combined standard uncertainty by a coverage factor. Typically, the coverage factor ranges from 2 to 3. Using a coverage factor allows the true value of a measured quantity to be specified with a defined probability within the specified uncertainty range. For purpose of this document, a coverage factor two is used, which corresponds to confidence interval of about 95 %. The DASY uncertainty Budget is shown in the following tables.



Error Description	Uncertainty Value (±%)	Probability	Divisor	(Ci) 1g	(Ci) 10g	Standard Uncertainty (1g) (±%)	Standard Uncertainty (10g) (±%)
Measurement System							
Probe Calibration	6.0	N	1	1	1	6.0	6.0
Axial Isotropy	4.7	R	1.732	0.7	0.7	1.9	1.9
Hemispherical Isotropy	9.6	R	1.732	0.7	0.7	3.9	3.9
Boundary Effects	1.0	R	1.732	1	1	0.6	0.6
Linearity	4.7	R	1.732	1	1	2.7	2.7
System Detection Limits	1.0	R	1.732	1	1	0.6	0.6
Modulation Response	3.2	R	1.732	1	1	1.8	1.8
Readout Electronics	0.3	N	1	1	1	0.3	0.3
Response Time	0.0	R	1.732	1	1	0.0	0.0
Integration Time	2.6	R	1.732	1	1	1.5	1.5
RF Ambient Noise	3.0	R	1.732	1	1	1.7	1.7
RF Ambient Reflections	3.0	R	1.732	1	1	1.7	1.7
Probe Positioner	0.4	R	1.732	1	1	0.2	0.2
Probe Positioning	2.9	R	1.732	1	1	1.7	1.7
Max. SAR Eval.	2.0	R	1.732	1	1	1.2	1.2
Test Sample Related							
Device Positioning	3.0	N	1	1	1	3.0	3.0
Device Holder	3.6	N	1	1	1	3.6	3.6
Power Drift	5.0	R	1.732	1	1	2.9	2.9
Power Scaling	0.0	R	1.732	1	1	0.0	0.0
Phantom and Setup							
Phantom Uncertainty	6.1	R	1.732	1	1	3.5	3.5
SAR correction	0.0	R	1.732	1	0.84	0.0	0.0
Liquid Conductivity Repeatability	0.2	N	1	0.78	0.71	0.1	0.1
Liquid Conductivity (target)	5.0	R	1.732	0.78	0.71	2.3	2.0
Liquid Conductivity (mea.)	2.5	R	1.732	0.78	0.71	1.1	1.0
Temp. unc. - Conductivity	3.4	R	1.732	0.78	0.71	1.5	1.4
Liquid Permittivity Repeatability	0.15	N	1	0.23	0.26	0.0	0.0
Liquid Permittivity (target)	5.0	R	1.732	0.23	0.26	0.7	0.8
Liquid Permittivity (mea.)	2.5	R	1.732	0.23	0.26	0.3	0.4
Temp. unc. - Permittivity	0.83	R	1.732	0.23	0.26	0.1	0.1
Combined Std. Uncertainty						11.4%	11.4%
Coverage Factor for 95 %						K=2	K=2
Expanded STD Uncertainty						22.9%	22.7%

Table 17.2. Uncertainty Budget for frequency range 300 MHz to 3 GHz



18. References

- [1] FCC 47 CFR Part 2 “Frequency Allocations and Radio Treaty Matters; General Rules and Regulations”
- [2] ANSI/IEEE Std. C95.1-1992, “IEEE Standard for Safety Levels with Respect to Human Exposure to Radio Frequency Electromagnetic Fields, 3 kHz to 300 GHz”, September 1992
- [3] IEEE Std. 1528-2013, “IEEE Recommended Practice for Determining the Peak Spatial-Average Specific Absorption Rate (SAR) in the Human Head from Wireless Communications Devices: Measurement Techniques”, Sep 2013
- [4] SPEAG DASY System Handbook
- [5] FCC KDB 248227 D01 v02r01, “SAR Guidance for IEEE 802.11 (WiFi) Transmitters”, Jun 2015.
- [6] FCC KDB 447498 D01 v05r02, “Mobile and Portable Device RF Exposure Procedures and Equipment Authorization Policies”, Feb 2014
- [7] FCC KDB 648474 D04 v01r02, “SAR Evaluation Considerations for Wireless Handsets”, Dec 2013.
- [8] FCC KDB 941225 D01 v03, “3G SAR MEAUREMENT PROCEDURES”, Oct 2014
- [9] FCC KDB 941225 D05 v02r03, “SAR Evaluation Considerations for LTE Devices”, Dec 2013
- [10] FCC KDB 941225 D06 v02, “SAR Evaluation Procedures for Portable Devices with Wireless Router Capabilities”, Oct 2014.
- [11] FCC KDB 865664 D01 v01r04, “SAR Measurement Requirements for 100 MHz to 6 GHz”, Aug 2015.
- [12] FCC KDB 865664 D02 v01r01, “RF Exposure Compliance Reporting and Documentation Considerations” May 2013.



Appendix A. Plots of System Performance Check

The plots are shown as follows.

System Check_Head_835MHz_151016

DUT: D835V2-SN:4d091

Communication System: UID 0, CW; Frequency: 835 MHz;Duty Cycle: 1:1
Medium: HSL_835_151016 Medium parameters used: $f = 835 \text{ MHz}$; $\sigma = 0.916 \text{ S/m}$; $\epsilon_r = 41.029$; $\rho = 1000 \text{ kg/m}^3$

Ambient Temperature: 23.4 °C ; Liquid Temperature: 22.6 °C

DASY5 Configuration:

- Probe: EX3DV4 - SN3958; ConvF(9.96, 9.96, 9.96); Calibrated: 2015.07.23;
- Sensor-Surface: 2mm (Mechanical Surface Detection)
- Electronics: DAE4 Sn1386; Calibrated: 2015.02.19
- Phantom: SAM1; Type: QD000P40CD; Serial: TP:1670
- Measurement SW: DASY52, Version 52.8 (8);SEMCAD X Version 14.6.10 (7331)

Pin=250mW/Area Scan (61x61x1): Interpolated grid: $dx=15\text{mm}$, $dy=15\text{mm}$

Maximum value of SAR (interpolated) = 2.92 W/kg

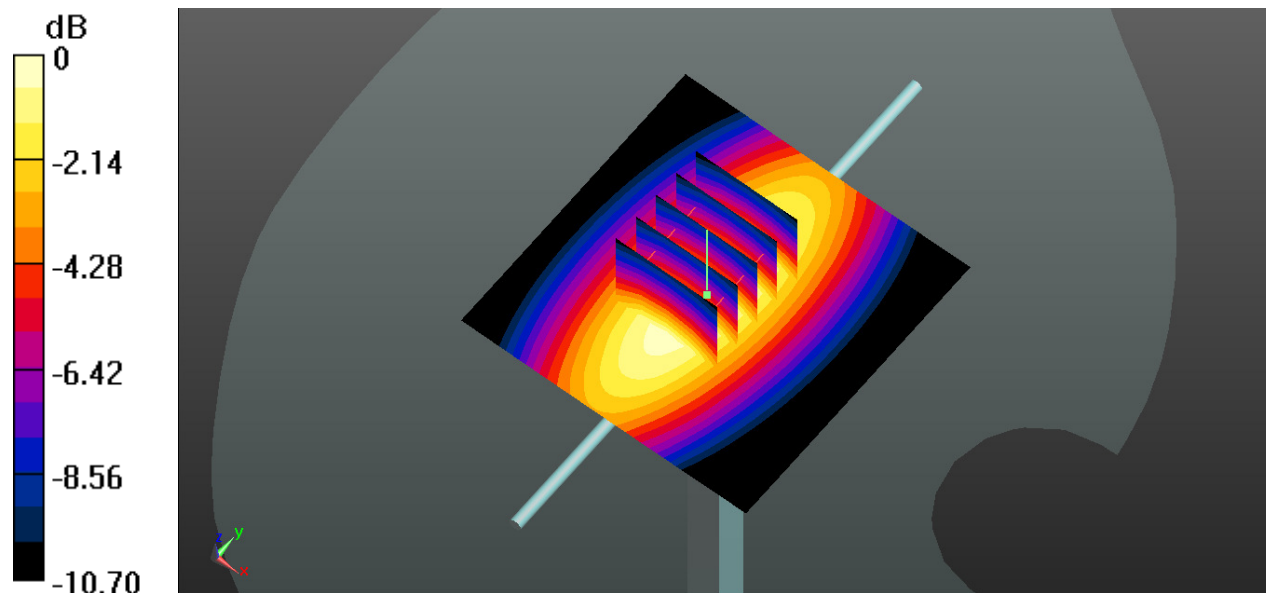
Pin=250mW/Zoom Scan (5x5x7)/Cube 0: Measurement grid: $dx=8\text{mm}$, $dy=8\text{mm}$, $dz=5\text{mm}$

Reference Value = 56.96 V/m; Power Drift = 0.02 dB

Peak SAR (extrapolated) = 3.51 W/kg

SAR(1 g) = 2.29 W/kg; SAR(10 g) = 1.49 W/kg

Maximum value of SAR (measured) = 2.93 W/kg



0 dB = 2.92 W/kg

System Check_Head_1750MHz_151017

DUT: D1750V2-SN:1069

Communication System: UID 0, CW; Frequency: 1750 MHz;Duty Cycle: 1:1
Medium: HSL_1800_151017 Medium parameters used: $f = 1750$ MHz; $\sigma = 1.373$ S/m; $\epsilon_r = 41.392$;
 $\rho = 1000$ kg/m³

Ambient Temperature: 23.5 °C ; Liquid Temperature: 22.8 °C

DASY5 Configuration:

- Probe: EX3DV4 - SN3958; ConvF(8.52, 8.52, 8.52); Calibrated: 2015.07.23;
- Sensor-Surface: 2mm (Mechanical Surface Detection)
- Electronics: DAE4 Sn1386; Calibrated: 2015.02.19
- Phantom: SAM1; Type: QD000P40CD; Serial: TP:1670
- Measurement SW: DASY52, Version 52.8 (8);SEMCAD X Version 14.6.10 (7331)

Pin=250mW/Area Scan (61x61x1): Interpolated grid: dx=15mm, dy=15mm

Maximum value of SAR (interpolated) = 13.2 W/kg

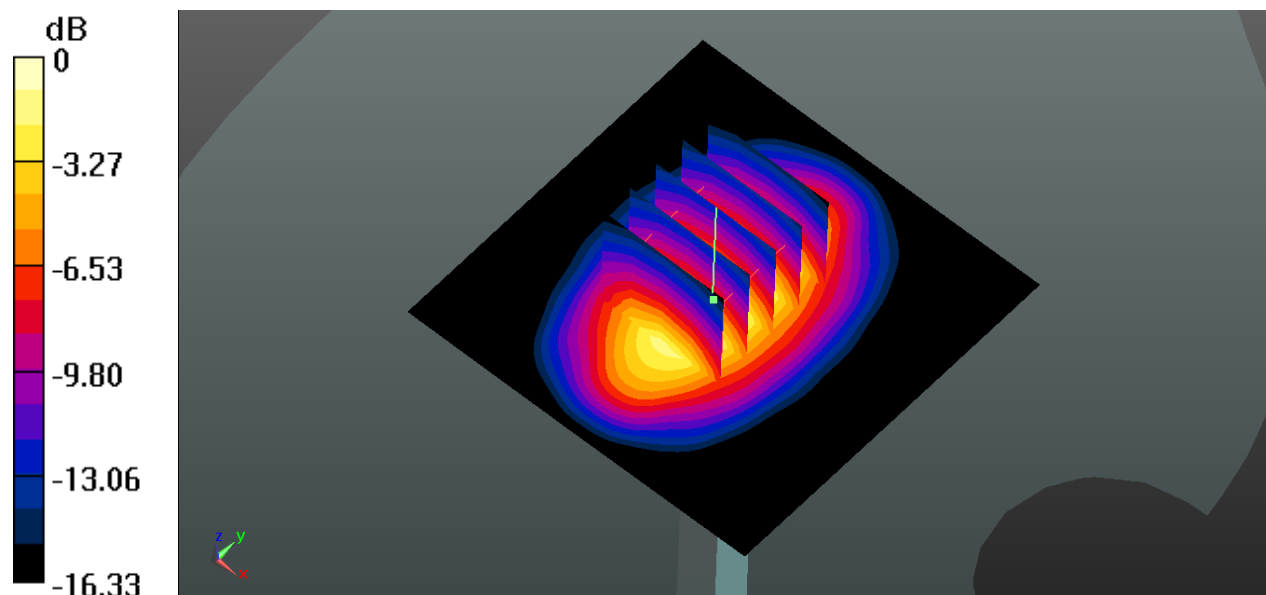
Pin=250mW/Zoom Scan (5x5x7)/Cube 0: Measurement grid: dx=8mm, dy=8mm, dz=5mm

Reference Value = 98.66 V/m; Power Drift = -0.02 dB

Peak SAR (extrapolated) = 16.5 W/kg

SAR(1 g) = 9.41 W/kg; SAR(10 g) = 5.09 W/kg

Maximum value of SAR (measured) = 13.2 W/kg



0 dB = 13.2 W/kg

System Check_Head_1900MHz_151017

DUT: D1900V2-SN:5d118

Communication System: UID 0, CW; Frequency: 1900 MHz;Duty Cycle: 1:1
Medium: HSL_1900_151017 Medium parameters used: $f = 1900$ MHz; $\sigma = 1.421$ S/m; $\epsilon_r = 41.283$;
 $\rho = 1000$ kg/m³

Ambient Temperature: 23.5 °C ; Liquid Temperature: 22.9 °C

DASY5 Configuration:

- Probe: EX3DV4 - SN3958; ConvF(8.22, 8.22, 8.22); Calibrated: 2015.07.23;
- Sensor-Surface: 2mm (Mechanical Surface Detection)
- Electronics: DAE4 Sn1386; Calibrated: 2015.02.19
- Phantom: SAM1; Type: QD000P40CD; Serial: TP:1670
- Measurement SW: DASY52, Version 52.8 (8);SEMCAD X Version 14.6.10 (7331)

Pin=250mW/Area Scan (61x61x1): Interpolated grid: dx=15mm, dy=15mm

Maximum value of SAR (interpolated) = 14.9 W/kg

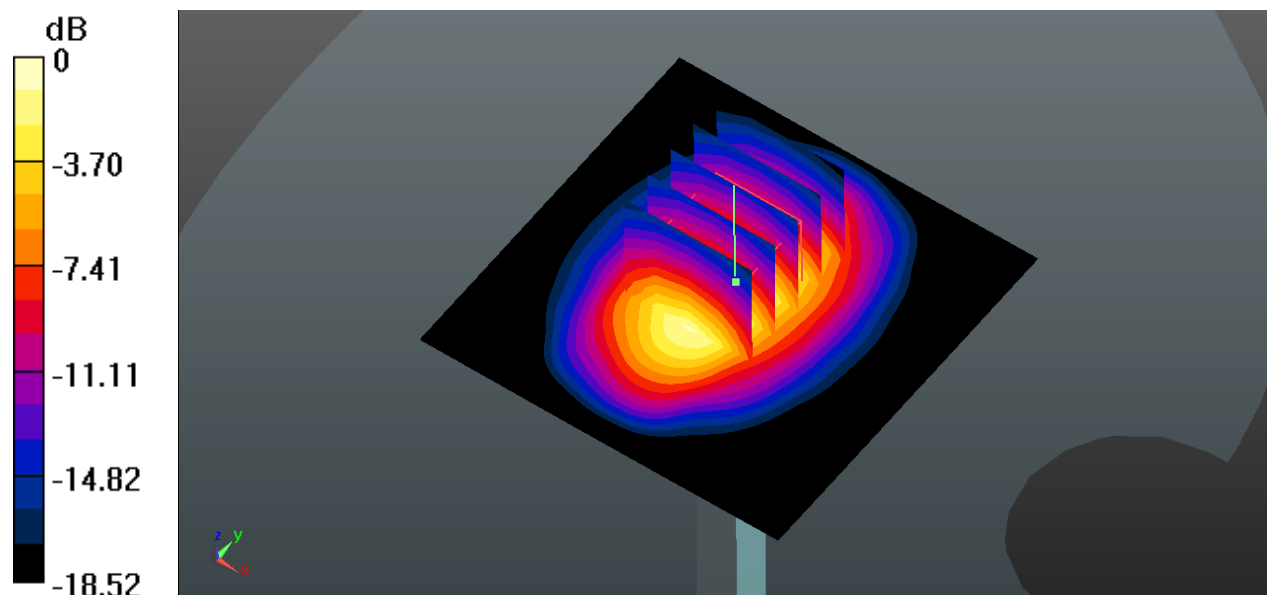
Pin=250mW/Zoom Scan (5x5x7)/Cube 0: Measurement grid: dx=8mm, dy=8mm, dz=5mm

Reference Value = 101.7 V/m; Power Drift = -0.01 dB

Peak SAR (extrapolated) = 18.7 W/kg

SAR(1 g) = 10.3 W/kg; SAR(10 g) = 5.37 W/kg

Maximum value of SAR (measured) = 14.4 W/kg



0 dB = 14.9 W/kg

System Check_Head_2450MHz_151016

DUT: D2450V2-SN:926

Communication System: UID 0, CW; Frequency: 2450 MHz; Duty Cycle: 1:1

Medium: HSL_2450_151016 Medium parameters used: $f = 2450$ MHz; $\sigma = 1.829$ S/m; $\epsilon_r = 40.081$; $\rho = 1000$ kg/m³

Ambient Temperature: 23.2 °C ; **Liquid Temperature:** 22.5 °C

DASY5 Configuration:

- Probe: EX3DV4 - SN3819; ConvF(7.01, 7.01, 7.01); Calibrated: 2014.11.13;
- Sensor-Surface: 2mm (Mechanical Surface Detection)
- Electronics: DAE4 Sn1303; Calibrated: 2014.12.11
- Phantom: SAM2; Type: QD000P40CD; Serial: TP:1671
- Measurement SW: DASY52, Version 52.8 (8); SEMCAD X Version 14.6.10 (7331)

Pin=250mW/Area Scan (81x81x1): Interpolated grid: dx=12mm, dy=12mm

Maximum value of SAR (interpolated) = 22.4 W/kg

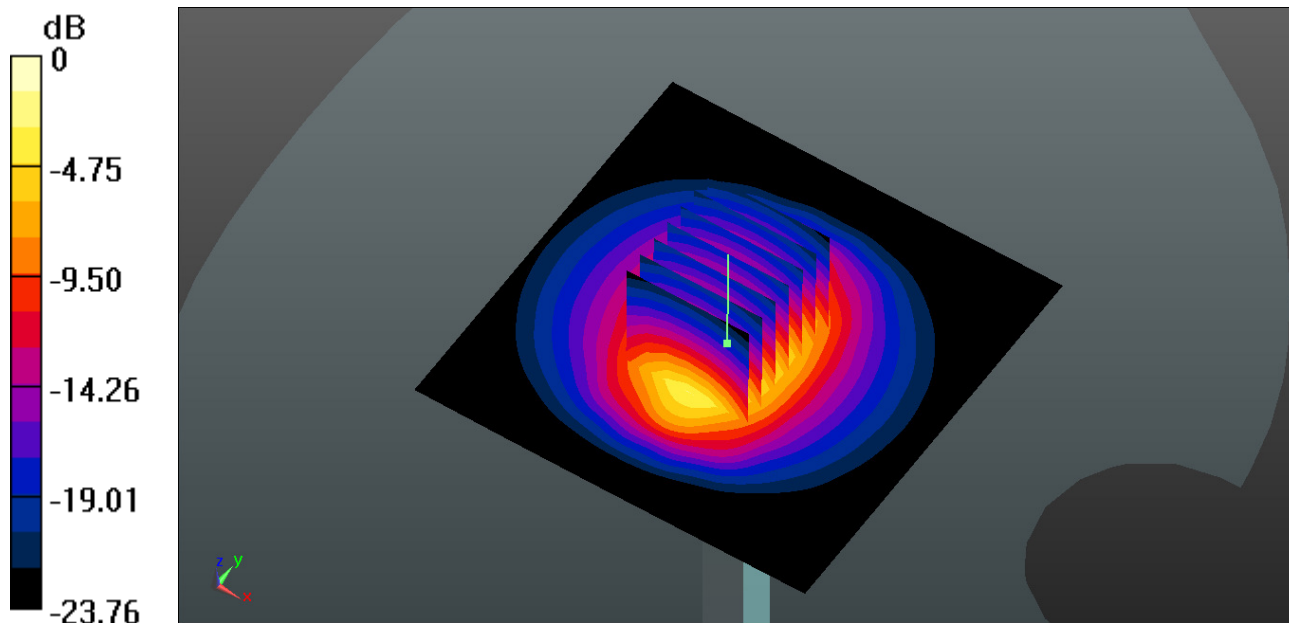
Pin=250mW/Zoom Scan (7x7x7)/Cube 0: Measurement grid: dx=5mm, dy=5mm, dz=5mm

Reference Value = 97.4 V/m; Power Drift = -0.06 dB

Peak SAR (extrapolated) = 31.3 W/kg

SAR(1 g) = 13.4 W/kg; SAR(10 g) = 5.77 W/kg

Maximum value of SAR (measured) = 21.6 W/kg



0 dB = 22.4 W/kg

System Check_Head_2600MHz_151016

DUT: D2600V2-SN:1061

Communication System: UID 0, CW; Frequency: 2600 MHz;Duty Cycle: 1:1
Medium: HSL_2600_151016 Medium parameters used: $f = 2600$ MHz; $\sigma = 2.056$ S/m; $\epsilon_r = 37.587$;
 $\rho = 1000$ kg/m³

Ambient Temperature: 23.4 °C ; Liquid Temperature: 22.8 °C

DASY5 Configuration:

- Probe: EX3DV4 - SN3958; ConvF(7.46, 7.46, 7.46); Calibrated: 2015.07.23;
- Sensor-Surface: 2mm (Mechanical Surface Detection)
- Electronics: DAE4 Sn1386; Calibrated: 2015.02.19
- Phantom: SAM1; Type: QD000P40CD; Serial: TP:1670
- Measurement SW: DASY52, Version 52.8 (8);SEMCAD X Version 14.6.10 (7331)

Pin=250mW/Area Scan (61x61x1): Interpolated grid: dx=12mm, dy=12mm

Maximum value of SAR (interpolated) = 25.3 W/kg

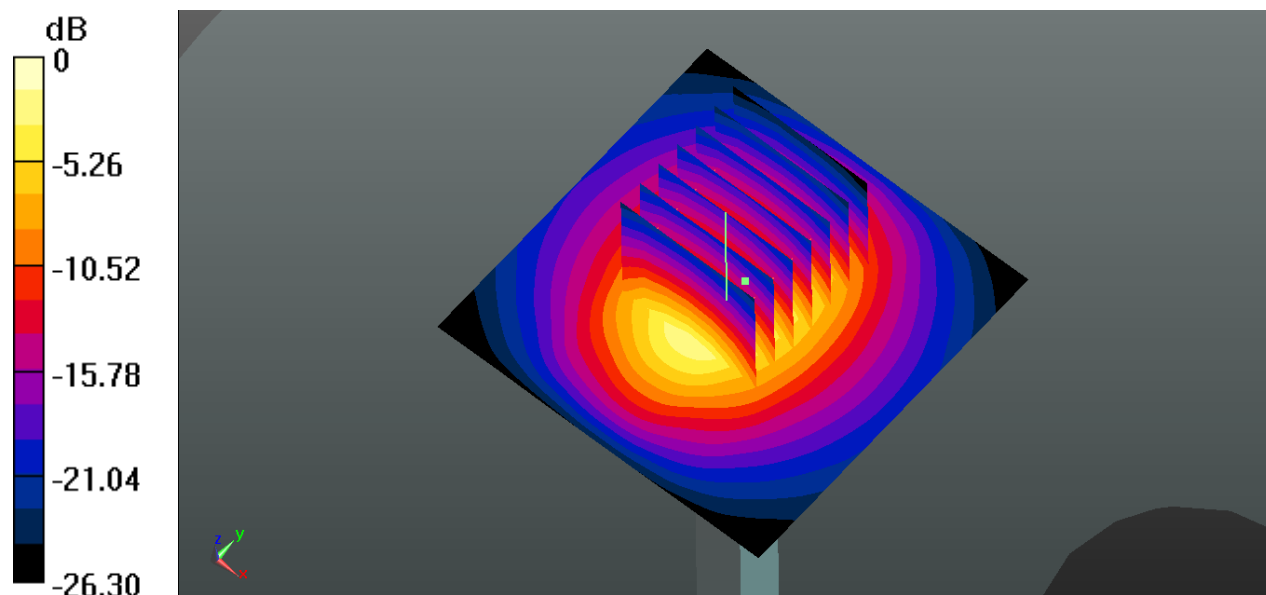
Pin=250mW/Zoom Scan (7x7x7)/Cube 0: Measurement grid: dx=5mm, dy=5mm, dz=5mm

Reference Value = 105.94 V/m; Power Drift = 0.01 dB

Peak SAR (extrapolated) = 34.9 W/kg

SAR(1 g) = 14.9 W/kg; SAR(10 g) = 6.51 W/kg

Maximum value of SAR (measured) = 23.7 W/kg



0 dB = 25.3 W/kg

System Check_Body_835MHz_151014

DUT: D835V2-SN:4d091

Communication System: UID 0, CW; Frequency: 835 MHz; Duty Cycle: 1:1
Medium: MSL_835_151014 Medium parameters used: $f = 835 \text{ MHz}$; $\sigma = 0.998 \text{ S/m}$; $\epsilon_r = 54.379$; $\rho = 1000 \text{ kg/m}^3$

Ambient Temperature: 23.4 °C ; Liquid Temperature: 22.6 °C

DASY5 Configuration:

- Probe: EX3DV4 - SN3958; ConvF(9.99, 9.99, 9.99); Calibrated: 2015.07.23;
- Sensor-Surface: 2mm (Mechanical Surface Detection)
- Electronics: DAE4 Sn1386; Calibrated: 2015.02.19
- Phantom: SAM1; Type: QD000P40CD; Serial: TP:1670
- Measurement SW: DASY52, Version 52.8 (8); SEMCAD X Version 14.6.10 (7331)

Pin=250mW/Area Scan (61x61x1): Interpolated grid: $dx=15\text{mm}$, $dy=15\text{mm}$

Maximum value of SAR (interpolated) = 2.79 W/kg

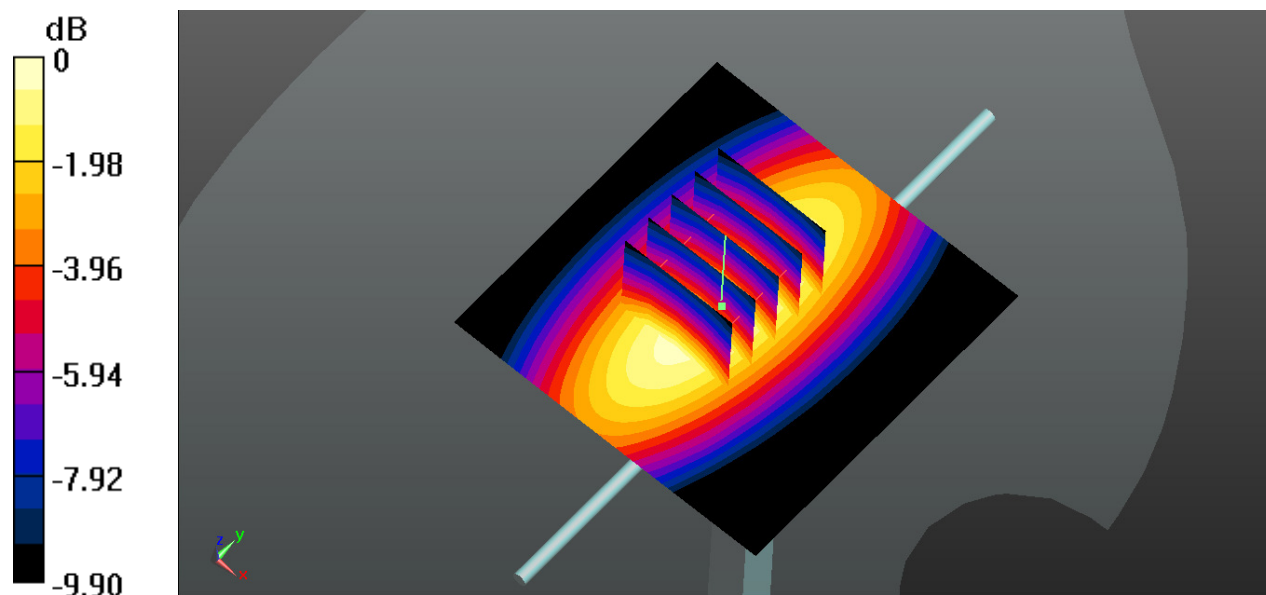
Pin=250mW/Zoom Scan (5x5x7)/Cube 0: Measurement grid: $dx=8\text{mm}$, $dy=8\text{mm}$, $dz=5\text{mm}$

Reference Value = 52.41 V/m; Power Drift = -0.01 dB

Peak SAR (extrapolated) = 3.70 W/kg

SAR(1 g) = 2.57 W/kg; SAR(10 g) = 1.72 W/kg

Maximum value of SAR (measured) = 2.77 W/kg



0 dB = 2.79 W/kg

System Check_Body_1750MHz_151015

DUT: D1750V2-SN:1069

Communication System: UID 0, CW; Frequency: 1750 MHz;Duty Cycle: 1:1
Medium: MSL_1800_151015 Medium parameters used: $f = 1750$ MHz; $\sigma = 1.522$ S/m; $\epsilon_r = 52.519$;
 $\rho = 1000$ kg/m³

Ambient Temperature: 23.3 °C ; Liquid Temperature: 22.8 °C

DASY5 Configuration:

- Probe: EX3DV4 - SN3958; ConvF(8.2, 8.2, 8.2); Calibrated: 2015.07.23;
- Sensor-Surface: 2mm (Mechanical Surface Detection)
- Electronics: DAE4 Sn1386; Calibrated: 2015.02.19
- Phantom: SAM1; Type: QD000P40CD; Serial: TP:1670
- Measurement SW: DASY52, Version 52.8 (8);SEMCAD X Version 14.6.10 (7331)

Pin=250mW/Area Scan (61x61x1): Interpolated grid: dx=15mm, dy=15mm

Maximum value of SAR (interpolated) = 12.8 W/kg

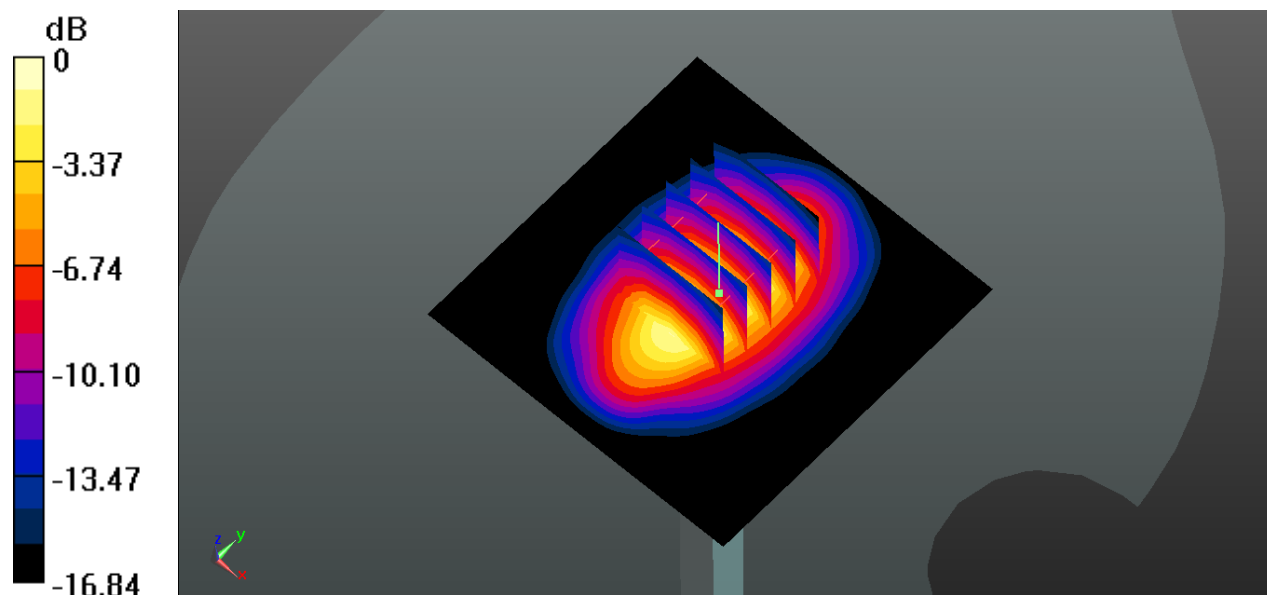
Pin=250mW/Zoom Scan (5x5x7)/Cube 0: Measurement grid: dx=8mm, dy=8mm, dz=5mm

Reference Value = 93.48 V/m; Power Drift = -0.05 dB

Peak SAR (extrapolated) = 15.8 W/kg

SAR(1 g) = 9.11 W/kg; SAR(10 g) = 4.88 W/kg

Maximum value of SAR (measured) = 12.7 W/kg



0 dB = 12.8 W/kg

System Check_Body_1900MHz_151015

DUT: D1900V2-SN:5d118

Communication System: UID 0, CW; Frequency: 1900 MHz;Duty Cycle: 1:1
Medium: MSL_1900_151015 Medium parameters used: $f = 1900$ MHz; $\sigma = 1.512$ S/m; $\epsilon_r = 53.903$;
 $\rho = 1000$ kg/m³

Ambient Temperature: 23.3 °C ; Liquid Temperature: 22.9 °C

DASY5 Configuration:

- Probe: EX3DV4 - SN3958; ConvF(7.87, 7.87, 7.87); Calibrated: 2015.07.23;
- Sensor-Surface: 2mm (Mechanical Surface Detection)
- Electronics: DAE4 Sn1386; Calibrated: 2015.02.19
- Phantom: SAM1; Type: QD000P40CD; Serial: TP:1670
- Measurement SW: DASY52, Version 52.8 (8);SEMCAD X Version 14.6.10 (7331)

Pin=250mW/Area Scan (61x61x1): Interpolated grid: dx=15mm, dy=15mm

Maximum value of SAR (interpolated) = 13.3 W/kg

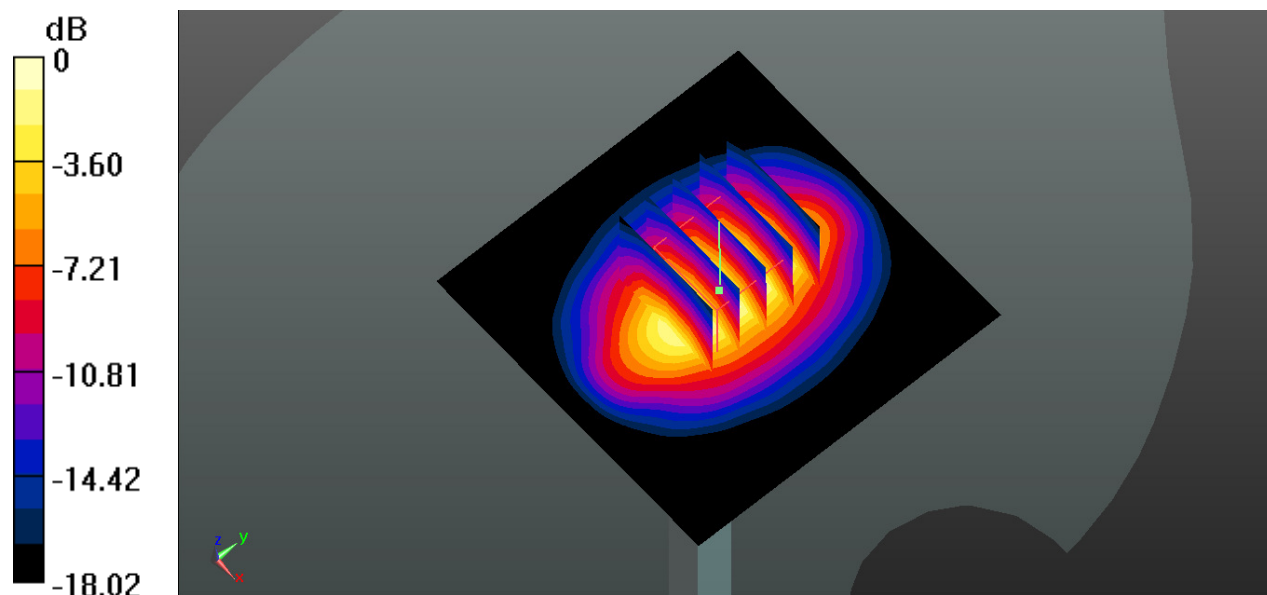
Pin=250mW/Zoom Scan (5x5x7)/Cube 0: Measurement grid: dx=8mm, dy=8mm, dz=5mm

Reference Value = 83.10 V/m; Power Drift = 0.01 dB

Peak SAR (extrapolated) = 16.7 W/kg

SAR(1 g) = 9.28 W/kg; SAR(10 g) = 4.82 W/kg

Maximum value of SAR (measured) = 12.9 W/kg



0 dB = 13.3 W/kg

System Check_Body_2450MHz_151016

DUT: D2450V2-SN:926

Communication System: UID 0, CW; Frequency: 2450 MHz;Duty Cycle: 1:1

Medium: MSL_2450_151016 Medium parameters used: $f = 2450$ MHz; $\sigma = 1.992$ S/m; $\epsilon_r = 52.291$; $\rho = 1000$ kg/m³

Ambient Temperature: 23.2 °C ; Liquid Temperature: 22.7 °C

DASY5 Configuration:

- Probe: EX3DV4 - SN3819; ConvF(6.95, 6.95, 6.95); Calibrated: 2014.11.13;
- Sensor-Surface: 2mm (Mechanical Surface Detection)
- Electronics: DAE4 Sn1303; Calibrated: 2014.12.11
- Phantom: SAM2; Type: QD000P40CD; Serial: TP:1671
- Measurement SW: DASY52, Version 52.8 (8);SEMCAD X Version 14.6.10 (7331)

Pin=250mW/Area Scan (81x81x1): Interpolated grid: dx=12mm, dy=12mm

Maximum value of SAR (interpolated) = 20.0 W/kg

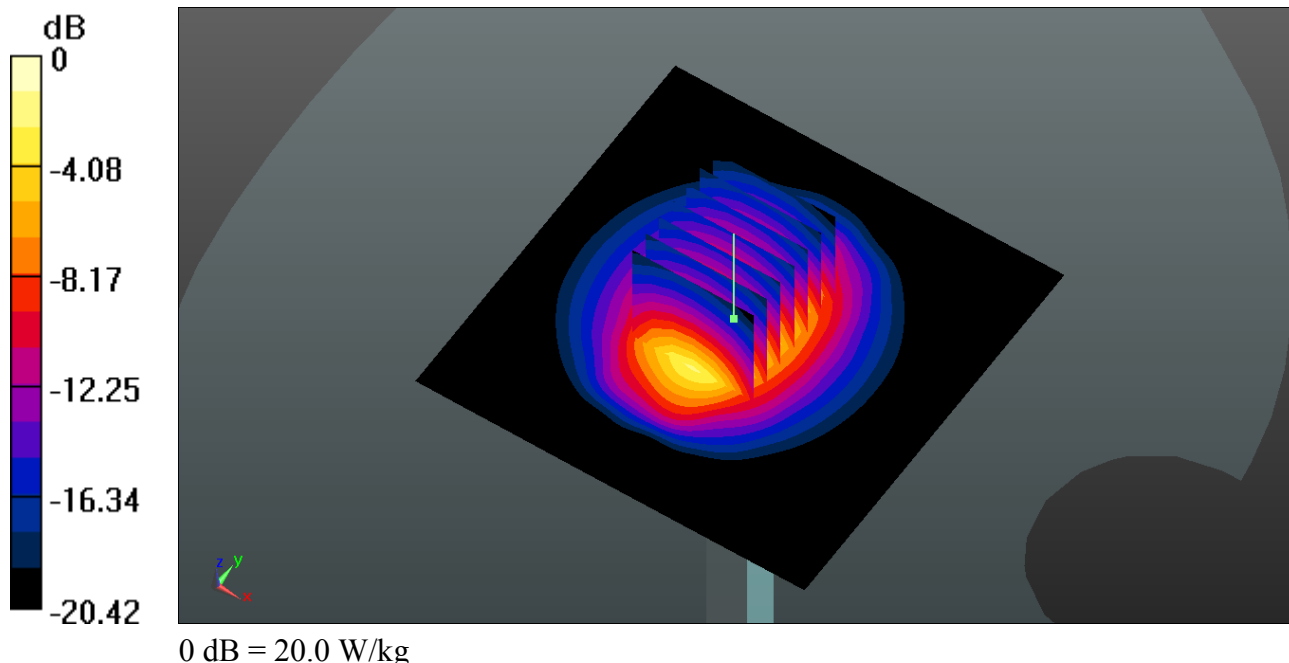
Pin=250mW/Zoom Scan (7x7x7)/Cube 0: Measurement grid: dx=5mm, dy=5mm, dz=5mm

Reference Value = 85.21 V/m; Power Drift = -0.01 dB

Peak SAR (extrapolated) = 26.6 W/kg

SAR(1 g) = 13.3 W/kg; SAR(10 g) = 6.27 W/kg

Maximum value of SAR (measured) = 20.1 W/kg



System Check_Body_2600MHz_151014

DUT: D2600V2-SN:1061

Communication System: UID 0, CW (0); Frequency: 2600 MHz;Duty Cycle: 1:1
Medium: MSL_2600_151014 Medium parameters used: $f = 2600$ MHz; $\sigma = 2.165$ S/m; $\epsilon_r = 53.823$;
 $\rho = 1000$ kg/m³

Ambient Temperature: 23.3 °C ; Liquid Temperature: 22.6 °C

DASY5 Configuration:

- Probe: EX3DV4 - SN3958; ConvF(7.41, 7.41, 7.41); Calibrated: 2015.07.23;
- Sensor-Surface: 2mm (Mechanical Surface Detection)
- Electronics: DAE4 Sn1386; Calibrated: 2015.02.19
- Phantom: SAM1; Type: QD000P40CD; Serial: TP:1670
- Measurement SW: DASY52, Version 52.8 (8);SEMCAD X Version 14.6.10 (7331)

Pin=250mW/Area Scan (61x61x1): Interpolated grid: dx=12mm, dy=12mm

Maximum value of SAR (interpolated) = 21.5 W/kg

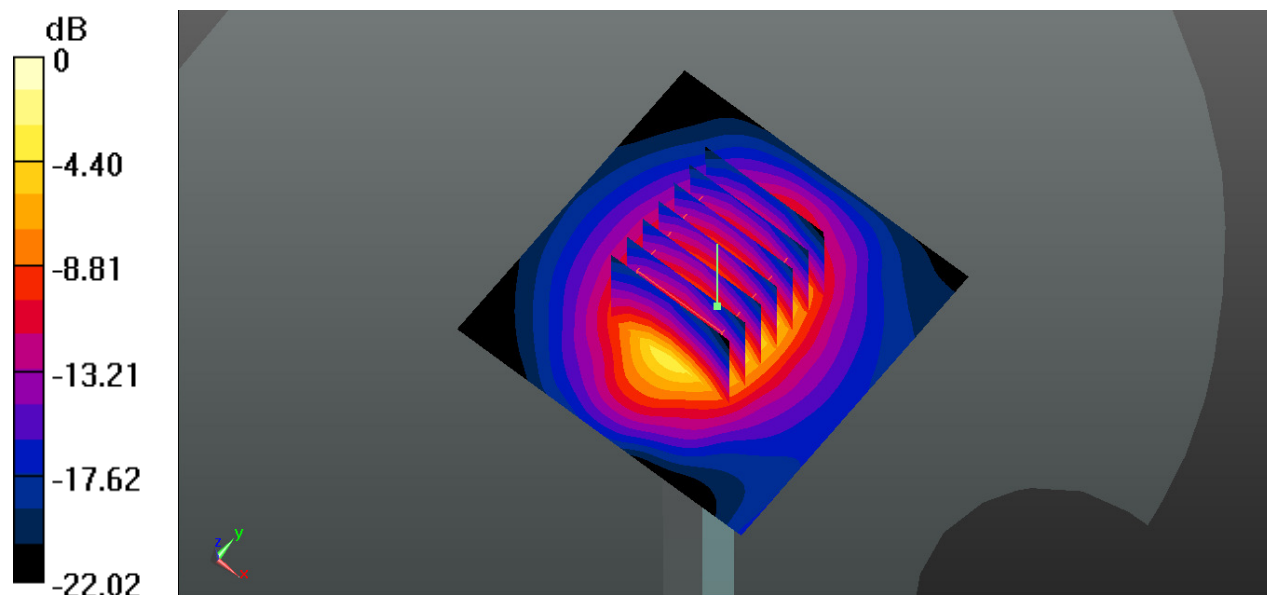
Pin=250mW/Zoom Scan (7x7x7)/Cube 0: Measurement grid: dx=5mm, dy=5mm, dz=5mm

Reference Value = 100.9 V/m; Power Drift = -0.08 dB

Peak SAR (extrapolated) = 29.0 W/kg

SAR(1 g) = 13.9 W/kg; SAR(10 g) = 6.27 W/kg

Maximum value of SAR (measured) = 21.5 W/kg



0 dB = 21.5 W/kg



Appendix B. Plots of High SAR Measurement

The plots are shown as follows.

0

18_LTE Band 2_20M_QPSK_1RB_99Offset_Back_10mm_Ch19100

Communication System: UID 0, LTE (0); Frequency: 1900 MHz;Duty Cycle: 1:1
Medium: MSL_1900_151015 Medium parameters used: $f = 1900$ MHz; $\sigma = 1.512$ S/m; $\epsilon_r = 53.903$;
 $\rho = 1000$ kg/m³

Ambient Temperature: 23.3 °C ; **Liquid Temperature:** 22.9 °C

DASY5 Configuration:

- Probe: EX3DV4 - SN3958; ConvF(7.87, 7.87, 7.87); Calibrated: 2015.07.23;
- Sensor-Surface: 2mm (Mechanical Surface Detection)
- Electronics: DAE4 Sn1386; Calibrated: 2015.02.19
- Phantom: SAM1; Type: QD000P40CD; Serial: TP:1670
- Measurement SW: DASY52, Version 52.8 (8);SEMCAD X Version 14.6.10 (7331)

Ch19100/Area Scan (61x111x1): Interpolated grid: dx=15mm, dy=15mm

Maximum value of SAR (interpolated) = 1.04 W/kg

Ch19100/Zoom Scan (5x5x7)/Cube 0: Measurement grid: dx=8mm, dy=8mm, dz=5mm

Reference Value = 1.953 V/m; Power Drift = 0.03 dB

Peak SAR (extrapolated) = 1.28 W/kg

SAR(1 g) = 0.740 W/kg; SAR(10 g) = 0.403 W/kg

Maximum value of SAR (measured) = 1.04 W/kg

