

## SPECIFICATIONS

<b>Model:</b>	QLA-CAD
<b>Communication:</b>	BLE 4.0 / ANT+ (Connection distance 5m)
<b>Battery lifetime:</b>	1 Year (1hr each day)
<b>Working temp:</b>	0-40°C
<b>Battery:</b>	CR2032
<b>Sensor size:</b>	31.1 x 34.4 x 9.4mm
<b>Weight:</b>	10g

## COMPATIBLE WITH:

This sensor can be connected to devices which support standard BLE 4.0/ANT+ protocol

## AUSTRALIAN WARRANTY

This document details the terms and conditions of the warranty provided with this product within Australia.

This warranty is offered by: Annex Products Pty Ltd,  
Suite 201, 168 Greville Street, Prahran, VIC 3181, Australia  
(03) 9521 3219 | support@quadlockcase.com

Subject to the exclusions and limitations set out below, we warrant to you that if you purchase a product directly from us, or from any of our authorised resellers, that it will not contain defects which are a result of faulty manufacturer workmanship or materials. This warranty subsists for one (1) year from the date of purchase.

Subject to any rights you have under the Australian Consumer Law, we will not be liable for defects which are a result of damage or loss caused by factors beyond our control, any product which has not been maintained according to any care or maintenance instructions provided with the product, any alterations to a product which are not performed by us, or damage or defects caused to the product due to unusual or non-recommended use. We will not be liable for any special, indirect, consequential or economic loss or damage or loss of profits whatsoever suffered by you or any other person resulting from any act or omission by us. Our total liability in respect of this Warranty against Defects is limited to the replacement of the goods.

Any claim made under this warranty must be made by returning the defective goods to us, at your expense. Please provide details of the defect and evidence of purchase to support@quadlockcase.com and we will provide instructions on how to obtain a replacement. If you do not have Internet access please telephone us for further instructions.

This Warranty against Defects is provided in addition to other rights and remedies that you may have at law. Our goods come with guarantees that cannot be excluded under the Australian Consumer Law. You are entitled to a replacement or refund for a major failure and for compensation for any reasonably foreseeable loss or damage. You are also entitled to have the goods repaired or replaced if the goods fail to be of acceptable quality and the failure does not amount to a major failure.

## EU WARRANTY

Purchases made within the EU are covered by EU consumer law for a period of two (2) years from the date of purchase. Proof of purchase will be required for any claim against warranty.

## WHERE'S MY WARRANTY INFO?

For local warranty information check the Quad Lock website [quadlockcase.com/pages/return-policy](http://quadlockcase.com/pages/return-policy)

1812-158



## Bicycle Cadence Sensor

## KEEP IN TOUCH



QUADLOCKCASE



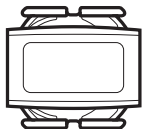
@QUADLOCKCASE



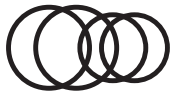
@QUADLOCKCASE

**QUADLOCKCASE.COM**

## WHAT'S IN THE BOX?



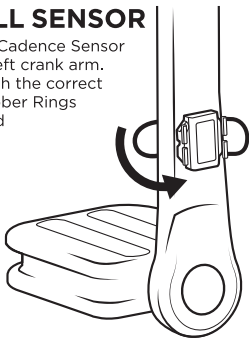
1x Cadence Sensor  
1x CR2032 Battery



4x Rubber Rings

## INSTALL SENSOR

1. Put the Cadence Sensor on the left crank arm. Affix with the correct size Rubber Rings provided



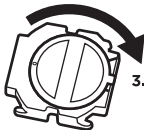
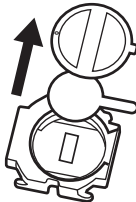
## INSTALL AND REPLACE THE BATTERY



1. Unscrew the battery case cover anticlockwise



2. Take out the transparent plastic sheet



3. Screw the battery case cover clockwise



### WATERPROOF SEAL

Ensure the rubber seal is properly and firmly in place

## FCC statement:

This device complies with Part 15 of the FCC rules. Operation is subject to the following two conditions: 1) this device may not cause harmful interference, and 2) this device must accept any interference received, including interference that may cause undesired operation.

Note: This equipment has been tested and found to comply with the limits for a Class B digital device, pursuant to part 15 of the FCC Rules. These limits are designed to provide reasonable protection against harmful interference in a residential installation. This equipment generates uses and can radiate radio frequency energy and, if not installed and used in accordance with the instructions, may cause harmful interference to radio communications. However, there is no guarantee that interference will not occur in particular installation. If this equipment does cause harmful interference to radio or television reception, which can be determined by turning the equipment off and on, the user is encouraged to try to correct the interference by one or more of the following measures:

- Reorient or relocate the receiving antenna.
- Increase the separation between the equipment and receiver.
- Connect the equipment into an outlet on a circuit different from that to which the receiver is connected.
- Consult the dealer or an experienced radio/TV technician for help.

Changes or modifications not expressly approved by the party responsible for compliance could void the user's authority to operate the equipment.

### FCC Radiation Exposure Statement

This device complies with FCC RF radiation exposure limits set forth for an uncontrolled environment. This transmitter must not be co-located or operating in conjunction with any other antenna or transmitter.

This device must operate with a minimum distance of 20 cm between the radiator and user body.