



# Runicc

**Shenzhen Runicc Wireless Technology Co., Ltd**  
Second Floor of Quanhuan Creative Park, lane1, Weiyuan New village,  
Gushu, Xixiang Street, Bao'an District, Shenzhen, China, 518101  
Tel : 0086 0755 27218716 Phone: +15999527926

Product Name 2.4Ghz Rod antenna  
Model No. 6201ANT  
Note: 2.4Ghz-2.5Ghz, 3dBi gain, RPSMA male Connector, ROHS, CE

## 1. PRODUCT TECHNICAL SPECIFICATION

<b>Electrical Specifications</b>	
Centre Frequency	2.4Ghz-2.5Ghz
Gain	3dBi
VSWR	≤1.5
Input Impedance	50Ω
Polarization	Vertical
Max Input Power (W)	50
<b>Mechanical Specifications</b>	
Working Temperature	-40°C~ + 85°C
Connector Type	RPSMA male (FME/BNC/MCX/MMCX and so on)
Size	28 ± 2mm
Antenna Cover Material	ABS
Color	Black



# Runicc

**Shenzhen Runicc Wireless Technology Co., Ltd**  
Second Floor of Quanhan Creative Park, lane1, Weiyuan New village,  
Gushu, Xixiang Street, Bao'an District, Shenzhen, China, 518101  
Tel : 0086 0755 27218716 Phone: +15999527926

---

## 2.PRODUCT PICTURE

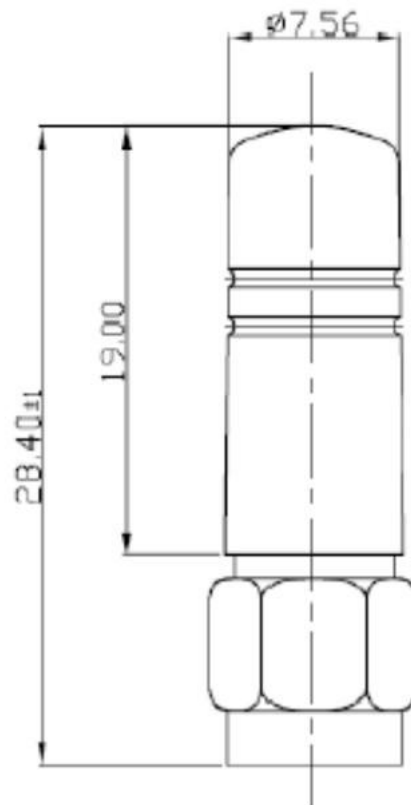




# Runicc

**Shenzhen Runicc Wireless Technology Co., Ltd**  
Second Floor of Quanhao Creative Park, lane1, Weiyuan New village,  
Gushu, Xixiang Street, Bao'an District, Shenzhen, China, 518101  
Tell : 0086 0755 27218716 Phone: +15999527926

### 3.PRODUCT TECHNICAL SPECIFICATION





# Runicc

**Shenzhen Runicc Wireless Technology Co., Ltd**  
Second Floor of Quanhan Creative Park, lane1, Weiyuan New village,  
Gushu, Xixiang Street, Bao'an District, Shenzhen, China, 518101  
Tell : 0086 0755 27218716 Phone: +15999527926

## 4. ELECTRIC APPLIANCE CHARACTERISTICS

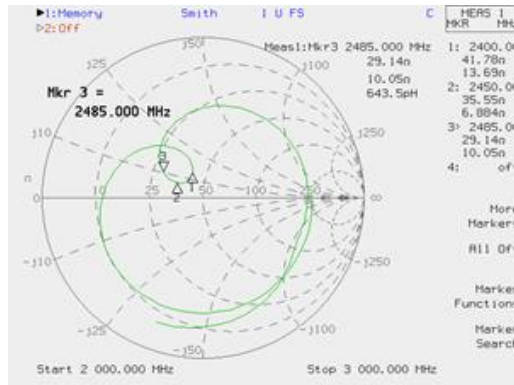
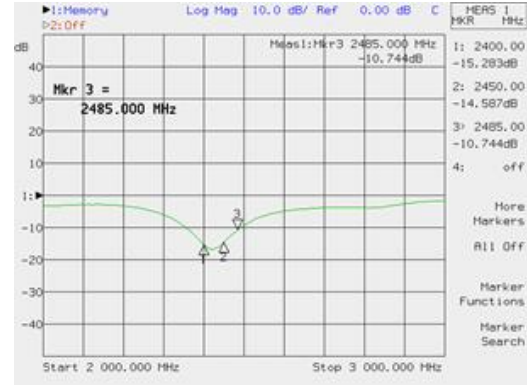
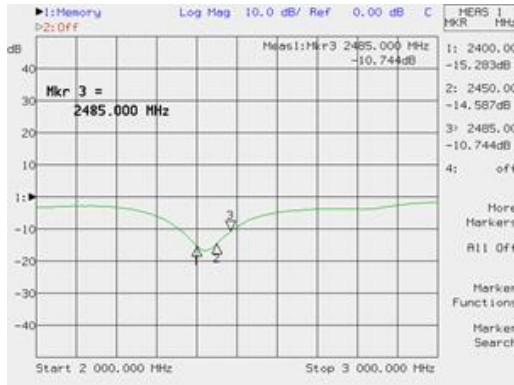
ITEM		TEST CONDITION	SPECIFICATION
1	Return Loss	Using Agilent Network Analyzer 8753ES to Measure Antenna S11 Return Loss Characteristics.	
2	VSWR	Using Agilent Network Analyzer 8753ES to Measure Antenna S11 VSWR Characteristics.	
3	Smith chart	Using Agilent Network Analyzer 8753ES to Measure Antenna S11 Gain Response Characteristics.	
4	Gain response	Using Agilent Network Analyzer 8753ES to Measure Antenna S21 Gain Response Characteristics.	



# Runicc

**Shenzhen Runicc Wireless Technology Co., Ltd**  
 Second Floor of Quanhan Creative Park, lane1, Weiyuan New village,  
 Gushu, Xixiang Street, Bao'an District, Shenzhen, China, 518101  
 Tell : 0086 0755 27218716 Phone: +15999527926

## 5. Testing Report





# Runicc

**Shenzhen Runicc Wireless Technology Co., Ltd**  
Second Floor of Quanhao Creative Park, lane1, Weiyuan New village,  
Gushu, Xixiang Street, Bao'an District, Shenzhen, China, 518101  
Tel : 0086 0755 27218716 Phone: +15999527926

**Pattern**  
H-plane

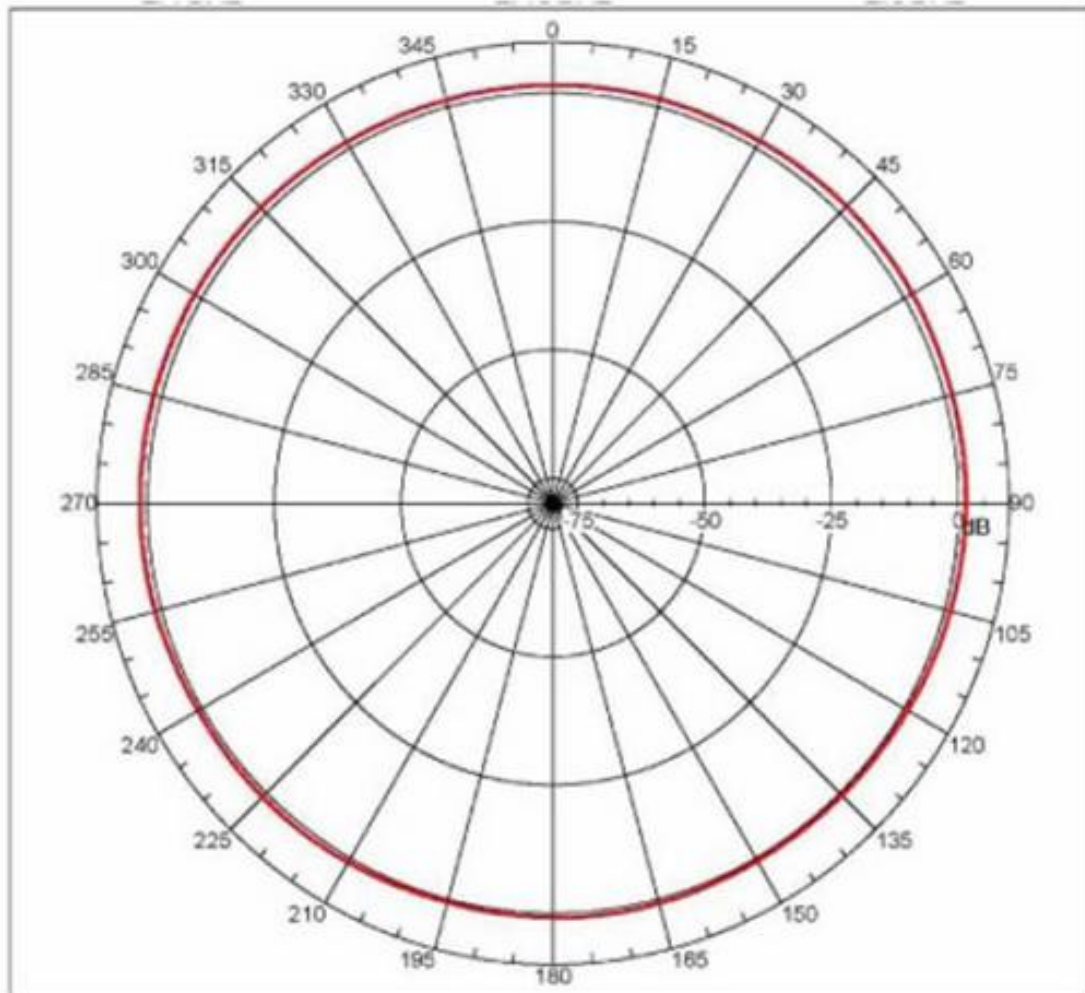
## SPEC : 2.4~2.5 GHz

Far-field amplitude of antenna-5-h.nsi

2.4GHz

2.45GHz

2.5GHz





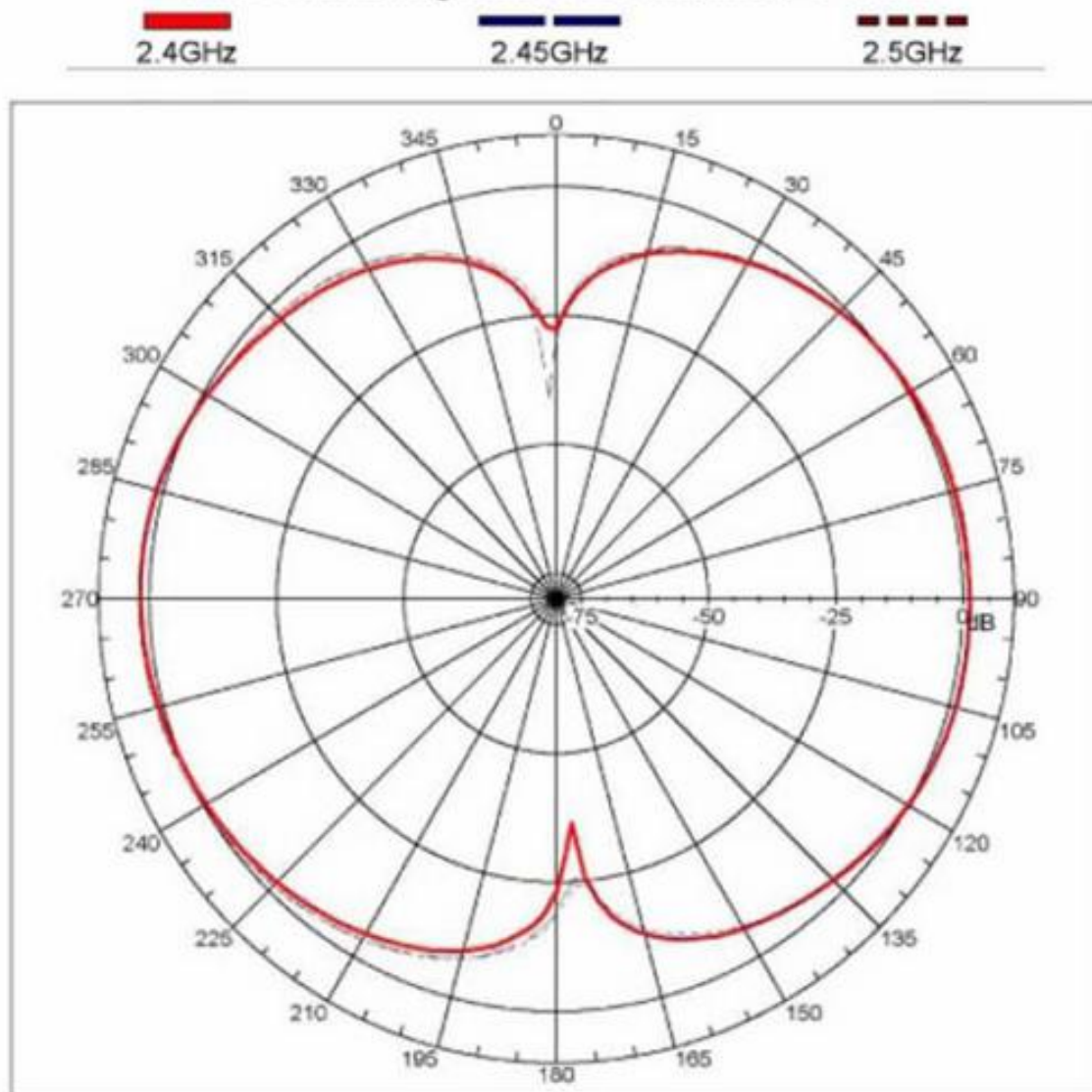
# Runicc

**Shenzhen Runicc Wireless Technology Co., Ltd**  
Second Floor of Quanhan Creative Park, lane1, Weiyuan New village,  
Gushu, Xixiang Street, Bao'an District, Shenzhen, China, 518101  
Tell : 0086 0755 27218716 Phone: +15999527926

E-PLANE

## SPEC : 2.4~2.5 GHz

Far-field amplitude of antenna-6-e.nsi





# 规格承认书

## SPECIFICATION FOR APPROVAL

编号: 2021042801

File No. \_\_\_\_\_

版本: 1.0

Revision \_\_\_\_\_

客户  
CUSTOMER: Iton Technology Corp., Ltd

客户料号  
CUSTOMER NO: \_\_\_\_\_

品名  
PART NAME: SMA JACK L=300MM  
6100CBL

供方料号  
SUPPLIER NO: SL180P.100007.P01

送样日期 Date: \_\_\_\_\_ 送样数量 Q'TY: PCS

客户确认 CUSTOMER APPROVED BY		
APPROVAL	CHIEF	SUPERVISOR

供方确认 SUPPLIER SIGNATURE		
APPROVAL	CHECK	DESIGN
sunny	ZouJie	LuoYi

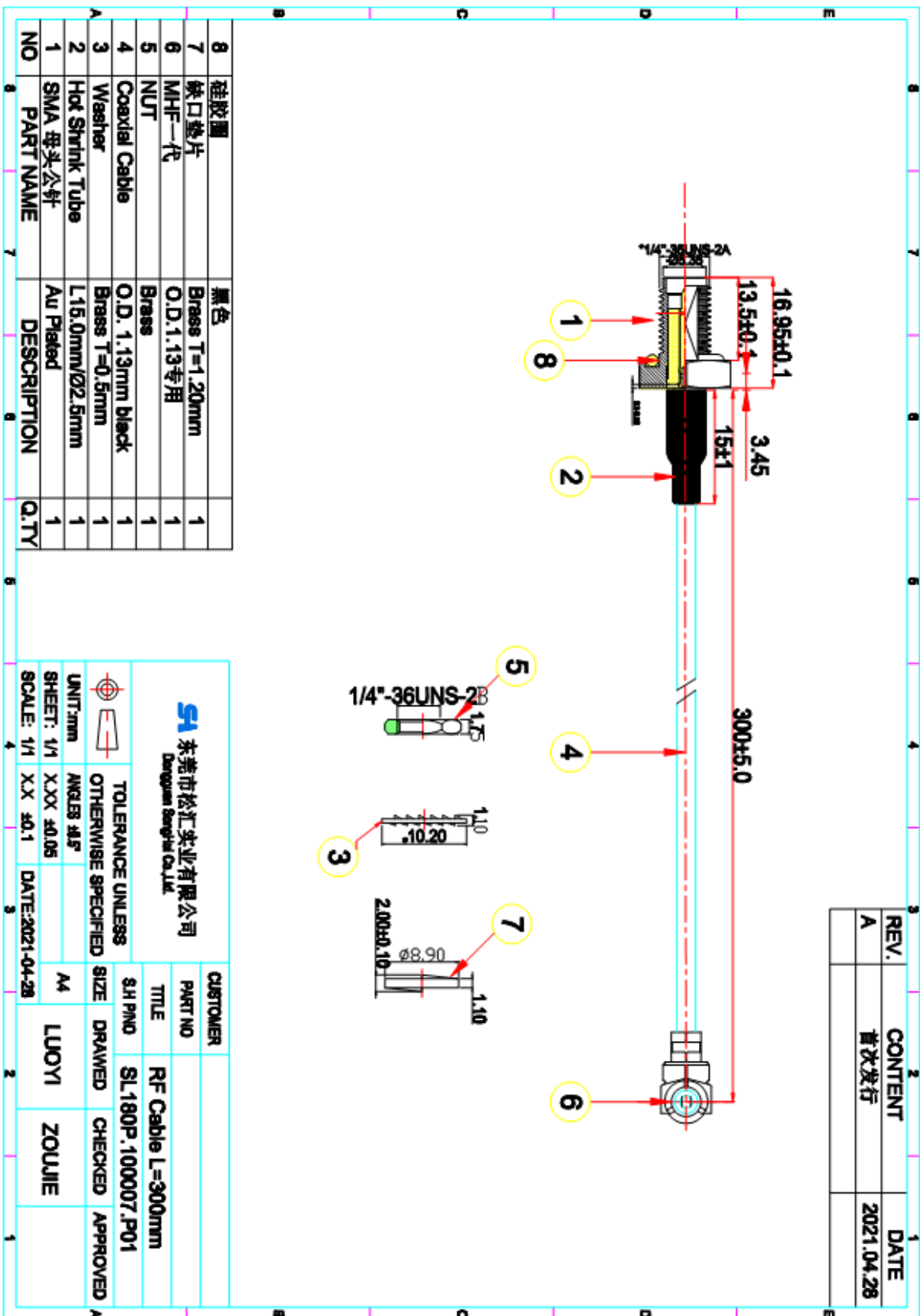
SH-RD-F04-A





# 承认书项目表

NO.	内容 (Contents)	页数 (Number of Page)	页码 (Page Code)
1	承认书封面 (Spec Cover)	1	1
2	承认书项目表 (Spec Item)	1	2
3	工程成品图 (Drawing)	1	3
4	电性测试报告 (Test Reports)	1	4
5	S参数测试 (S Parameter)	1	5
6			
7			
8			
9			
10	-	-	-
11	-	-	-
12	-	-	-



add: 东莞市大朗镇佛新聚祥二路24 号 电话: 0769-82226176 传真: 0769-82226175



# 电性测试报告

## Test Reports

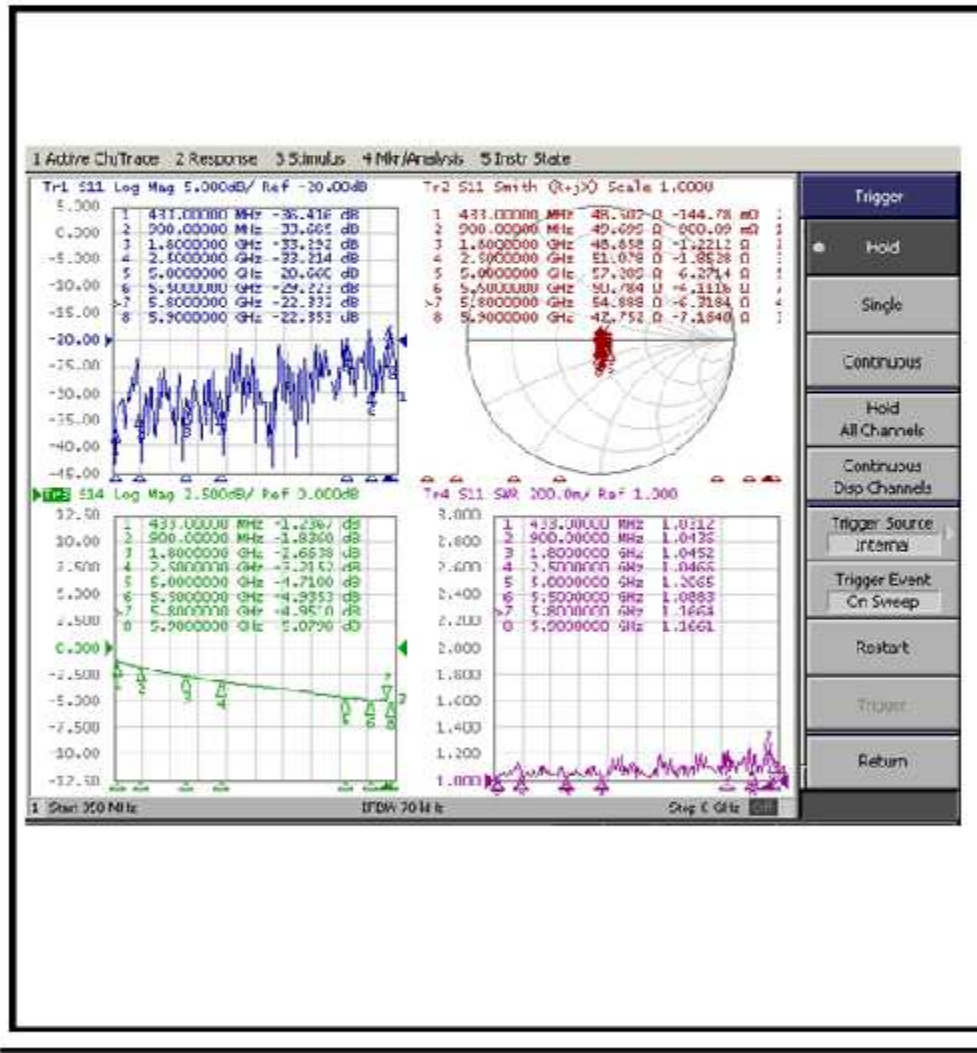
<b>Electrical Properties</b>	
Frequency	DC-6GHz
Impedance	50 Ohm Nominal
V.S.W.R	1.5 : 1 Max
Return Loss	-13 dB Max
Working Voltage (depending on cable type)	170V/50Hz
Insulation Resistance	1000M ohm
Cable Loss	2.0dB / m Max @ 900 MHz
Contact Resistance	Center Contact: 10M ohm Outer Contact: 5M ohm
Admitted Power	1 W
Connector	RP-SMA Female and MHF一代
<b>Physical Properties</b>	
Cable	O.D. 1.13mm // L= 300mm
Operating Temp.	-40 ~ +80 °C
Storage Temp.	-40 ~ +80 °C
Cable Color	Black

add: 东莞市大朗镇佛新聚祥二路24 号 电话: 0769-82226176 传真: 0769-82226175



# S 参数测试

## S Parameter Test



Note: 6211ANT = 6201ANT + 6100CBL:300mm RPSMA Cable

6211ANT Photo:

