

User Manual & Warranty

Quick Start	2
Introduction	3
Installation	4
Advanced Settings	6
Specifications	8
Important Safety Instructions	8
Compatibility	8
Warranty	9
Regulatory Compliance	11

Quick Start

AUX Plug

Connect to your car's AUX port if available

USB Port

Microphone

OLED Screen

Next Button

Tap to play next song

Center Button

Tap to play/pause music;

Answer Call:

Tap to answer/end an incoming call; Press and hold to reject

Voice Assistant:

Press and hold to activate your phone's voice assistant

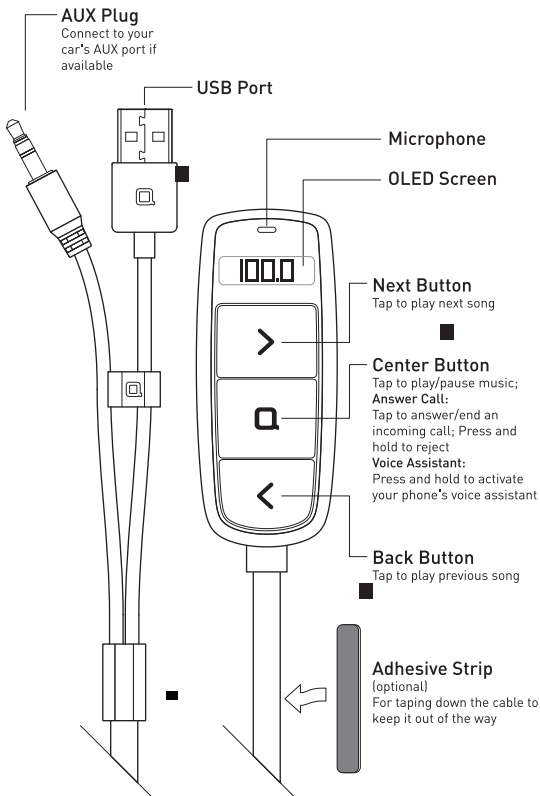
Back Button

Tap to play previous song

Adhesive Strip

(optional)

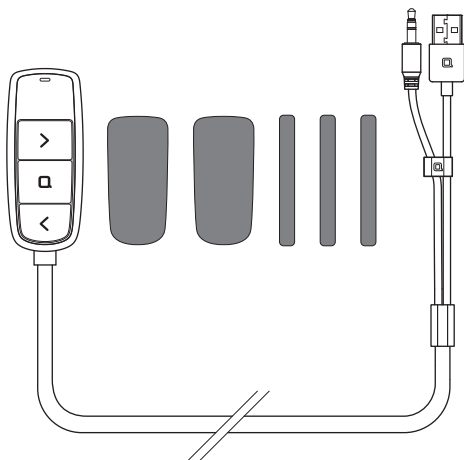
For taping down the cable to keep it out of the way



Introduction

Stream Music Wirelessly in Any Car. Enjoy Bluetooth capabilities from answering calls to listening to HD music hands-free. Compatible with any Bluetooth smartphone (iPhone, Android, Blackberry, etc.) and for all cars with or without an AUX port.

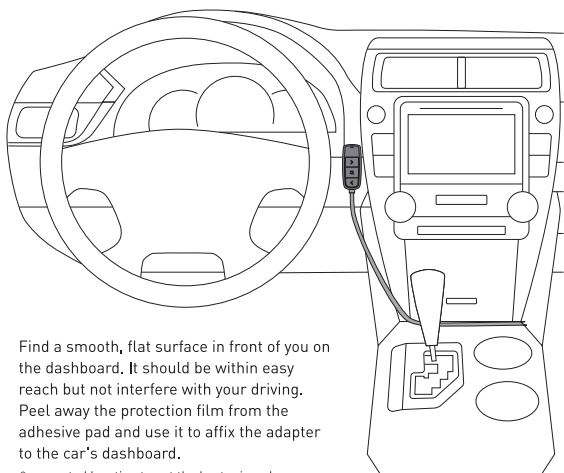
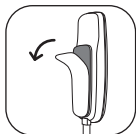
At a Glance



- All Compatible HD Music Adapter x 1pc
- Adhesive Pad x 2pcs
- Adhesive Strip x 3pcs
- User Manual and Warranty x 1pc

Installation

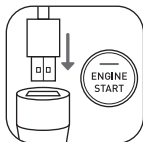
Step 1 : Mount



Find a smooth, flat surface in front of you on the dashboard. It should be within easy reach but not interfere with your driving. Peel away the protection film from the adhesive pad and use it to affix the adapter to the car's dashboard.

*suggested location to get the best microphone performance

Step 2: Connect to Power



Plug the adapter into your car's USB port (or a car charger) and start the car engine.

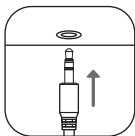
Step 3 : Pair with Your Smartphone



Once the adapter is powered on, turn on your phone's Bluetooth. Go to your phone's Bluetooth settings and select the **ZUSMusic** to start pairing.

*Pair a second phone to the adapter by pressing and holding down Center Button for 6 seconds. Up to two phones can be paired to the adapter at any time.

Step 4 : Connect to AUX



Plug the 3.5 mm AUX cable into your car's AUX port. Turn your car stereo to the AUX mode. Double click Center Button to switch between AUX and FM mode.

*If you car does not support AUX, please see how to connect to your car's FM radio on the next page.

Advanced Settings

Optional Step 1: Connect to FM Radio

Switch your car's FM radio to an 91MHz frequency. Then, adjust the radio frequency state the frequency fixed at 91 MHz on the adapter to match that of your car.

Troubleshooting Procedures



You can reset the device to clear all pairing memory.

Reset:

Press all three buttons at the same time and hold for 6 seconds to reset all settings.

Optional Step 2: Cable Management

We have designed a flat cable in order to give the adapter a cleaner look. To keep the cable tucked away, use the included adhesive strips to tape the cable to your car's dashboard.



- 1** Peel off the protection film on the adhesive strip. Apply the strip to the back of the cable.



- 2** Press the cable firmly against the dashboard. Repeat with the second adhesive strip.

Specifications

Features	Specifications
Size	75.3 x 31.5 x 11.7mm or 3 x 1.24 x 0.46 inch
Weight	50g
Connection	Bluetooth, FM or Aux
Bluetooth	Bluetooth 4.1
Operating Frequency	FM: 91MHz Bluetooth: 2.4GHz
Power Requirements	USB 5V / 500mA
Audio Technology	* Qualcomm® aptX™ codec technology * Qualcomm® cVc™ audio technology
AUX Cable	Standard AUX-out
Cable Length	120 cm or 47 inches
OLED Screen	96 x 32 pixels
Power	Standard USB Male Port

Important Safety Instructions

Do not submerge or expose to water for an extended period of time.

Do not place near any open flame sources.

Do not disassemble.

Avoid dropping.

Compatibility

Compatible with most smartphones and tablets that support Bluetooth such as iPhone, iPad, Samsung, LG, HTC, Google Nexus, and etc.

Vehicle must have a USB port or a cigarette lighter socket.

Vehicle must have either FM radio or an AUX port.

No NDA inc. One year Warranty

nonda warrants that your nonda hardware product (the "Product") will be free from defects in materials and workmanship under normal use for a period of one (1) year from the date of delivery.

REMEDIES

If a hardware defect in the Product arises and a valid claim is received within the Warranty Period, nonda will, at its sole option and subject to applicable laws: (a) repair the Product at no charge with a new or refurbished component or (b) replace the Product with a new or refurbished Product upon return of the defective Product. This Warranty does not apply to Products you purchased from unauthorized resellers, or where the instructions for use and activation of the Product are not complied with or where the Product is damaged as a result of abuse, accident, modification or other causes beyond our reasonable control. Any replacement product will be warranted for the remainder of the original warranty period or 30 calendar days, whichever is longer.

EXCLUSIONS AND LIMITATIONS

This Limited Warranty applies only to the original purchaser of Product that was purchased from an authorized retailer or sales channel. Non-authorized 3rd party receipts or order numbers are NOT accepted for warranty verification. Without limiting the foregoing, the Limited Warranty does not apply to any (a) nonda products and services other than the Product, (b) Product that is, or nonda reasonably believes to be, stolen, (c) to damage caused by accident, abuse, misuse, flood, fire, earthquake or other external causes; (d) to damage caused by operating the Product outside the permitted or intended uses described by nonda or with improper voltage or power supply;

OBTAIN WARRANTY SERVICES

To obtain remedies under this Warranty, nonda must receive your claim before the end of the Warranty Period. You also must deliver the Product, in either its original packaging or packaging providing an equal degree of protection, to the address specified by nonda. Consumer shall bear the cost of shipping the device to nonda. By sending the Device, consumer agrees to transfer ownership to nonda. nonda may not return the original device to consumer. If the claim is justified based on this Warranty, nonda shall bear the cost of shipping the repaired or replacement device to the Consumer.

How To Make A Warranty Claim

Read through our warranty above. If you believe you are covered by the warranty, please prepare the following documents and email them to cs@nonda.us.

1. A copy or screenshot of the original purchase invoice to verify your warranty (order ID, purchase date, website or store)
2. A description of the problem with a photo illustrating the physical damage
3. Your shipping address including name, postal code and phone number

If you need software support only, you may contact us with your app account and phone operation system. We would be glad to help.

Please note that, in the European Union, any warranty period less than two years shall be increased to two years.

Regulatory Compliance

FCC Compliance Statement

NOTE: This equipment has been tested and found to comply with the limits for a Class B digital device, pursuant to part 15 of the FCC Rules. These limits are designed to provide reasonable protection against harmful interference in a residential installation. This equipment generates uses and can radiate radio frequency energy and, if not installed and used in accordance with the instructions, may cause harmful interference to radio communications. However, there is no guarantee that interference will not occur in a particular installation. If this equipment does cause harmful interference to radio or television reception, which can be determined by turning the equipment off and on, the user is encouraged to try to correct the interference by one or more of the following measures:

- Reorient or relocate the receiving antenna.
- Increase the separation between the equipment and receiver.
- Connect the equipment into an outlet on a circuit different from that to which the receiver is connected.
- Consult the dealer or an experienced radio/TV technician for help.

Changes or modifications not expressly approved by the party responsible for compliance could void the user's authority to operate the equipment. This device complies with Part 15 of the FCC Rules. Operation is subject to the following two conditions:

- (1) this device may not cause harmful interference, and
- (2) this device must accept any interference received, including interference that may cause undesired operation.

NCC Statement

Administrative Regulations on Low Power Radio Waves Radiated Devices
warning:

Article 12

Without permission granted by the NCC, any company, enterprise, or user is not allowed to change frequency, enhance transmitting power or alter original characteristic as well as performance to a approved low power radio-frequency devices.

Article 14

The low power radio-frequency devices shall not influence aircraft security and interfere legal communications; If found, the user shall cease operating immediately until no interference is achieved.

The said legal communications means radio communications is operated in compliance with the Telecommunications Act.

The low power radio-frequency devices must be susceptible with the interference from legal communications or ISM radio wave radiated devices.

NCC警語：

根據交通部低功率電波輻射性電機管理辦法規定：

第十二條

經型式認證合格之低功率射頻電機，非經許可，公司、商號或使用者均不得擅自變更頻率、加大功率或變更原設計之特性及功能。

第十四條

低功率射頻電機之使用不得影響飛航安全及干擾合法通信；經發現有干擾現象時，應立即停用，並改善至無干擾時方得繼續使用。前項合法通信，指依電信法規定作業之無線電通信。低功率射頻電機須忍受合法通信或工業、科學及醫療用電波輻射性電機設備之干擾。



Declaration of Conformity

Refer to article 10(9), shall be provided as follows:

Hereby, No NDA inc. declares that the radio equipment type Smart Vehicle Health Monitor is in compliance with Directive 2014/53/EU.

The full text of the EU declaration of conformity is available at the following Internet address: <https://www.nonda.co/pages/regulation/>.

Please note that, in the European Union, any warranty period less than two years shall be increased to two years.

Manufacturer: No NDA Inc.

EU Warranty

2 year warranty against defects in materials and workmanship. For further warranty information, please visit www.nonda.co.

Garantie deux sur les matériaux et la technologie. Pour plus d'information rendez-vous sur le site www.nonda.co.

2 Jahre Garantie auf Material- und Fertigungsfehler. Für weitere Informationen zur Garantie besuchen Sie bitte www.nonda.co.

Garantia de 2 (dois) anos contra defeitos de materiais e mão de obra. Para mais informações de garantia, acesse www.nonda.co.

2 Anni di garanzia contro difetti di materiale e lavorazione. Per ulteriori informazioni sulla garanzia, si prega di visitare www.nonda.co.

2 jaar garantie tegen materiaal- en fabricagefouten. Meer informatie over de garantie bepalingen is beschikbaar bezoek de website www.nonda.co.

2 años de garantía contra defectos en materiales y mano de obra. Si necesita más información acerca de la garantía, por favor visite www.nonda.co.

如有材料和工艺方面的瑕疵, 我们负责保修两年。更多的保修信息, 请访问www.nonda.co 网站。当社は材料が製造上の欠陥など2年間保証いたします。詳しくはwww.nonda.coウェブサイトをお問い合わせください。

재료 와 제조공예의문제상항은 2 년 보증입니다. 추가 보증 내용은 www.nonda.co에서 확인할수있습니다.

2 года гарантии на производственные дефекты корпуса и устройства. Для получения дополнительной информации о гарантии, пожалуйста, посетите nonda.co.

Developed by nonda in California. Assembled in China.

No NDA Inc., 320 Mountain View Avenue, Mountain View, CA 94041, USA.

No NDA Inc., Günther-Wagner-Allee 13, 30177 Hannover, Germany. www.nonda.co | TM and © 2017 No NDA Inc. All rights reserved.