

## Internal pictures of the LORA IOT STATION 915MHz

General view of the opened LORA IOT Station:



Note: dimensions of the enclosure are 231 x 126 x 60 mm

Detail of the inside front panel:



Note: dimensions of the enclosure are 231 x 126 x 60 mm

Detail of the sticker, on door rear side:



**LoRa IoT STATION**

All the LEDs are OFF by default  
 Short press on the TEST button : LEDs are enabled for about 1 minute  
 Long press on the TEST button : test procedure is launched

LEDs / Color		Description
<b>STATION LEDs</b>		
<b>GSM1</b>	<b>GSM2</b>	Used to describe GSM reception
OFF	OFF	SIM card error
OFF	ON	No network
ON	OFF	RSSI level < 17 (network present but low signal)
ON	ON	RSSI level > 18 (network present and good signal)
<b>WAN</b>		Behavior depends on application embedded in the station
<b>MOD1</b>	<b>MOD2</b>	Behavior depends on application embedded in the station
OFF	OFF	
OFF	ON	
ON	OFF	
ON	ON	
<b>LoRa MODEM LEDs</b>		
<b>PWR</b>		ON if the LoRa modem is powered
<b>TX</b>		NOT USED
<b>CRC</b>		NOT USED
<b>RSSI</b>		NOT USED
<b>LINK</b>		NOT USED

KLK02084 - Date : 23rd May 14

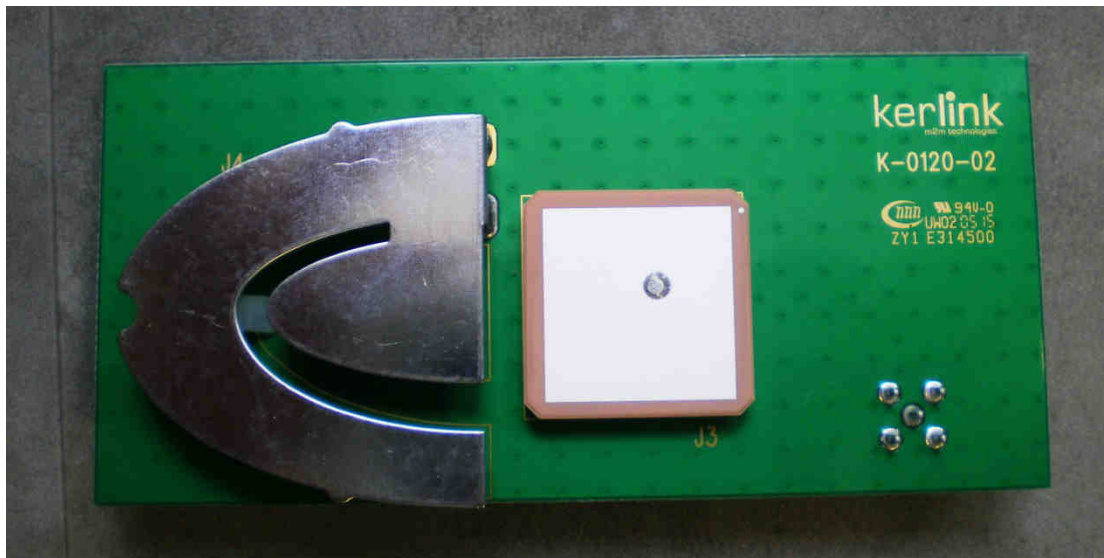
Note: dimensions of the enclosure are 231 x 126 x 60 mm

Internal view when the PCB are removed:

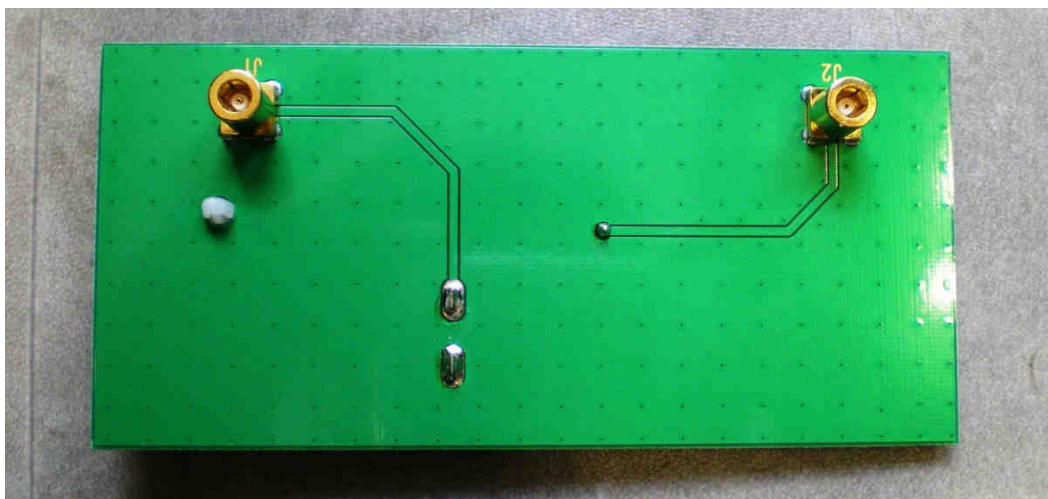


Note: dimensions of the enclosure are 231 x 126 x 60 mm

View of the top side of the antenna PCB (K-0120-02) :

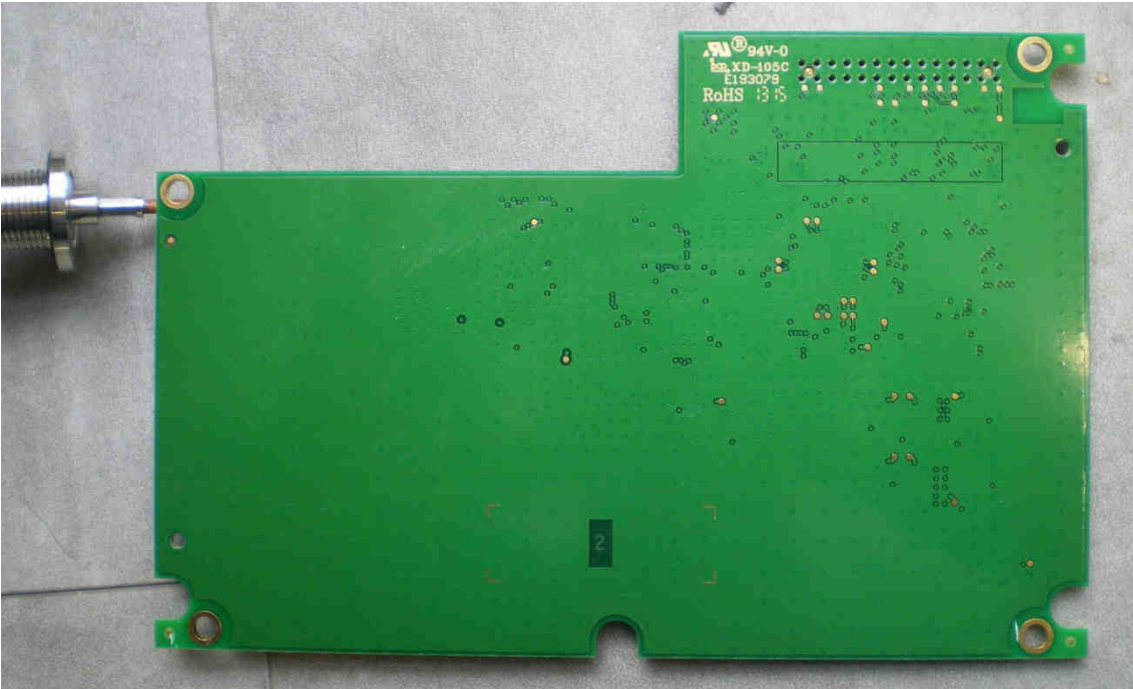


View of the bottom side of the antenna PCB (K-0120-02) :

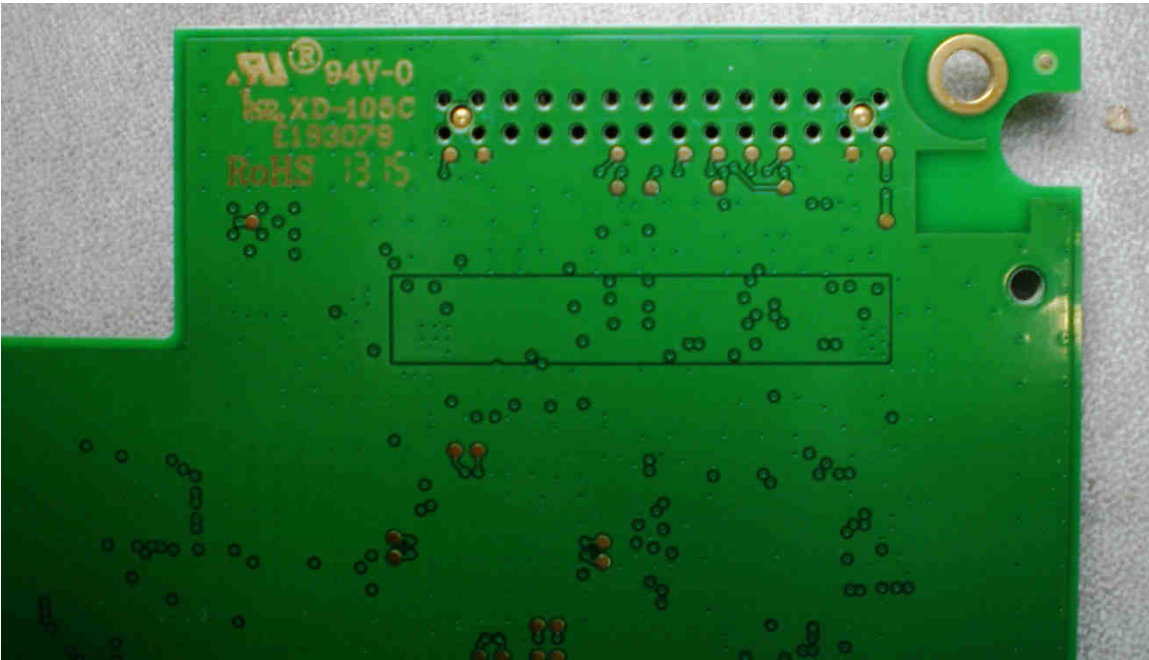


Note: dimensions of the PCB are 107 x 50 mm.

View of the bottom side of the LORA PCB (K-0121-05) :



Detail of the bottom side of the LORA PCB (K-0120-02) :

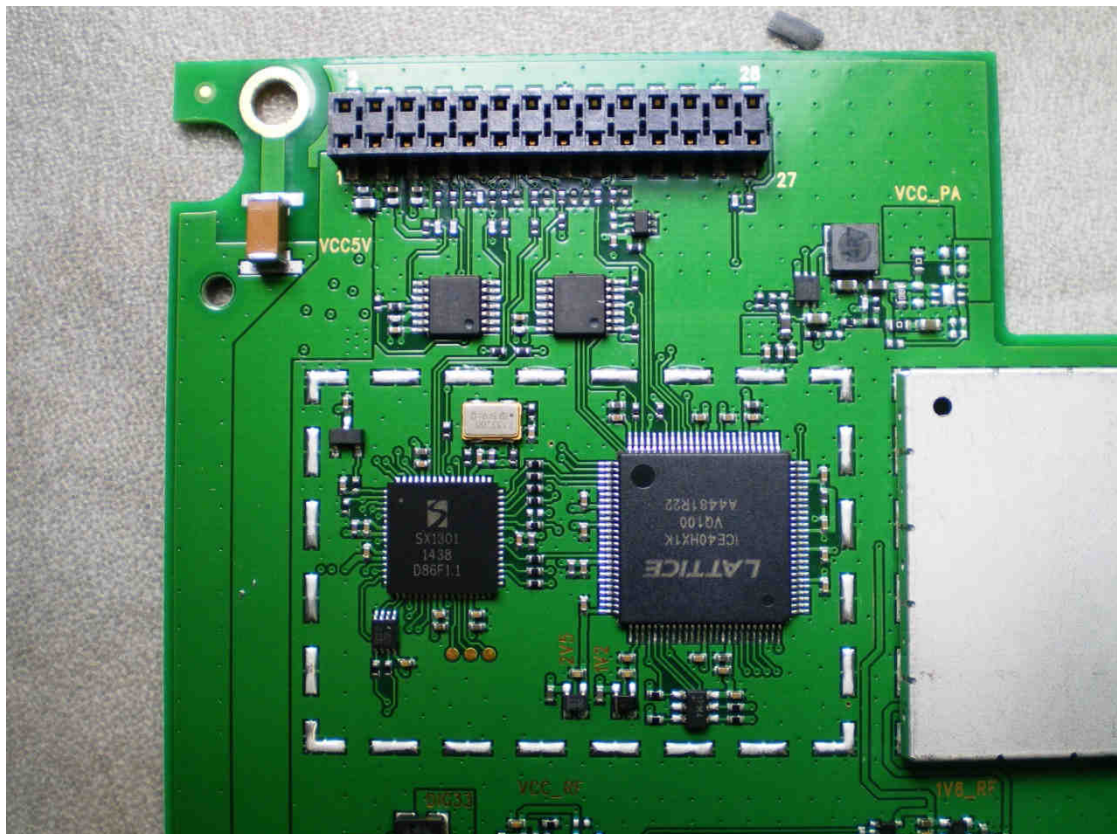


Note: dimensions of the PCB are 159,7 x 106,5 mm.

View of the top side of the LORA PCB (K-0121-05) :

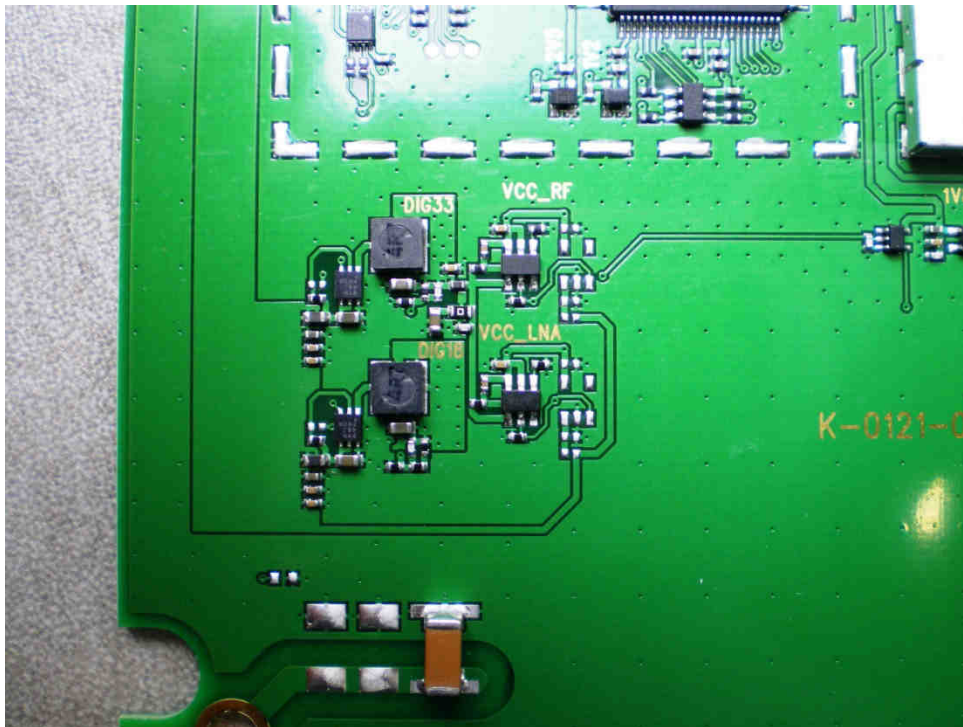


Detail of the top side of the LORA PCB (K-0121-05), CPU area :

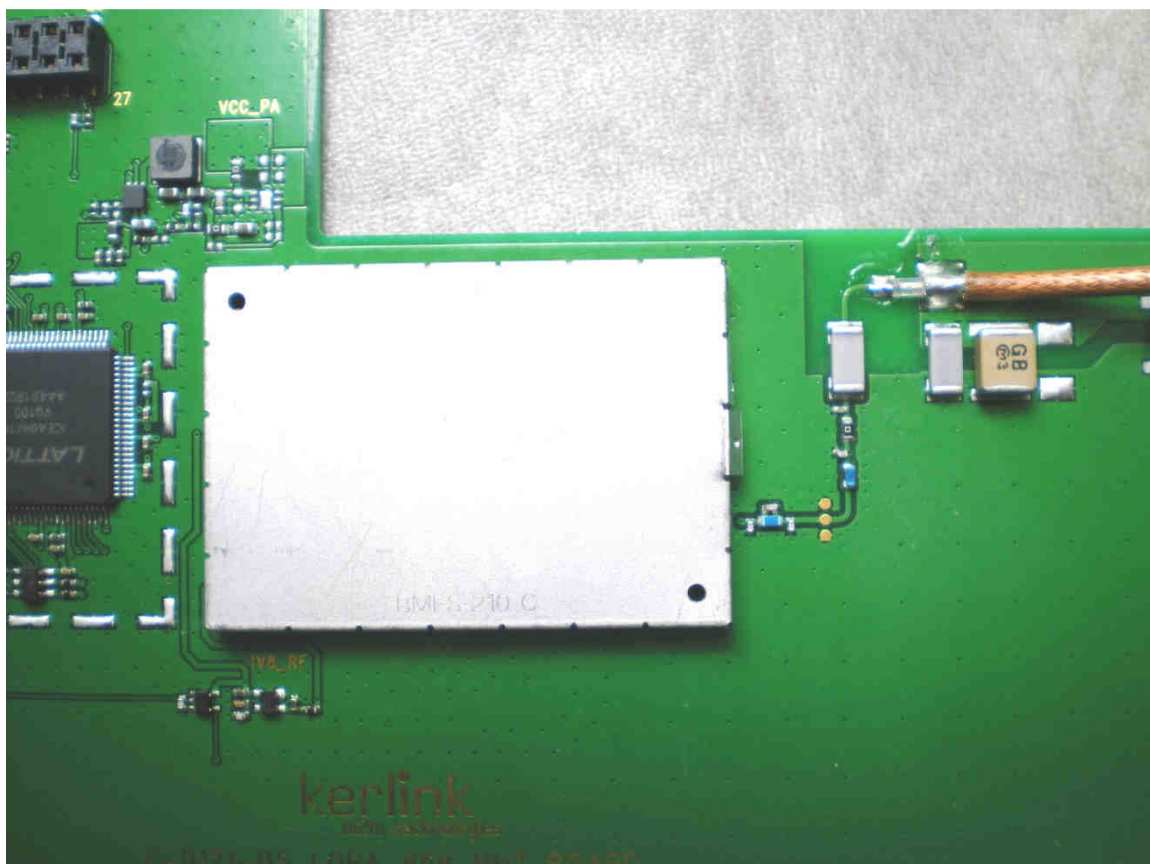


Note: dimensions of the PCB are 159,7 x 106,5 mm.

Detail of the top side of the LORA PCB (K-0121-05), power area :



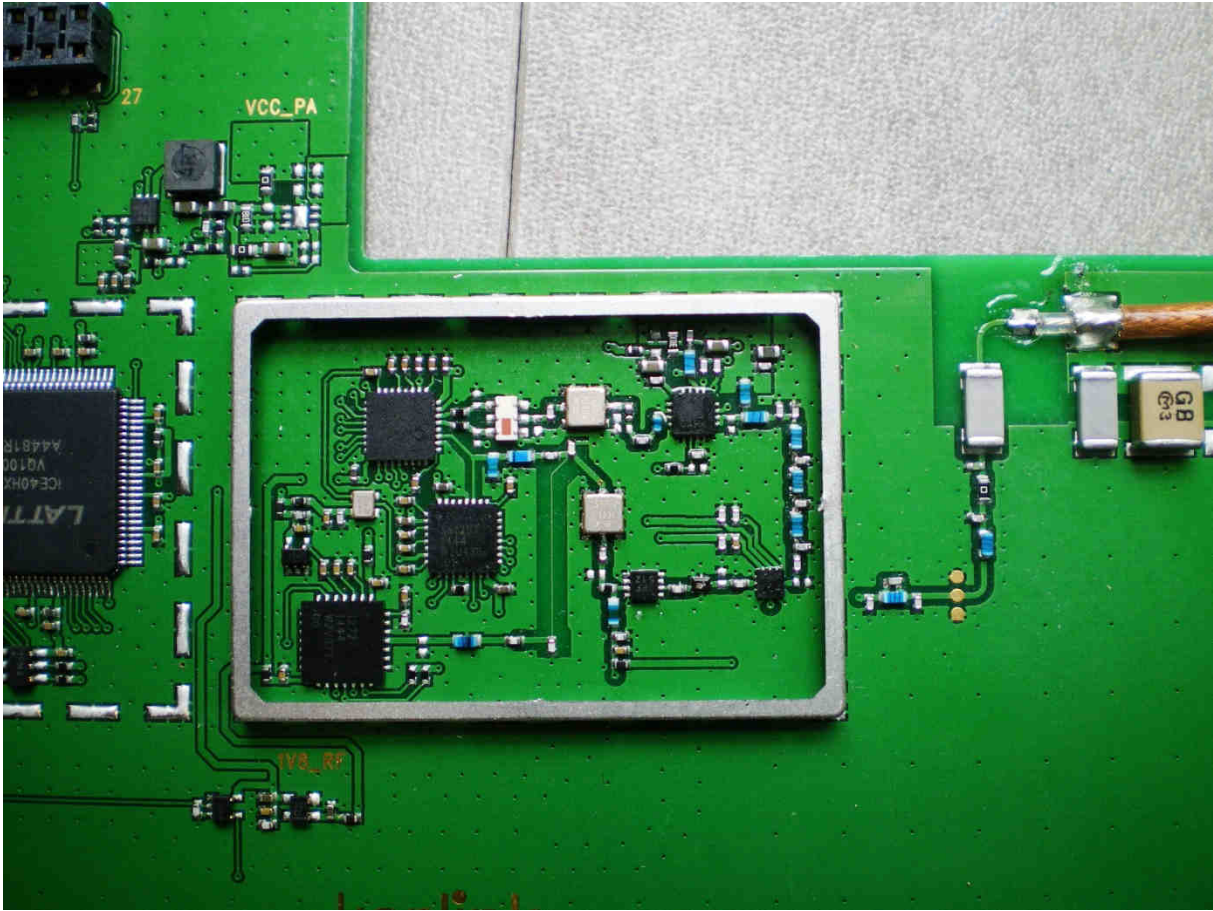
Detail of the top side of the LORA PCB (K-0121-05), radio area :



Note: dimensions of the PCB are 159,7 x 106,5 mm.  
Note: dimensions of the shield are 44 x 30 mm.

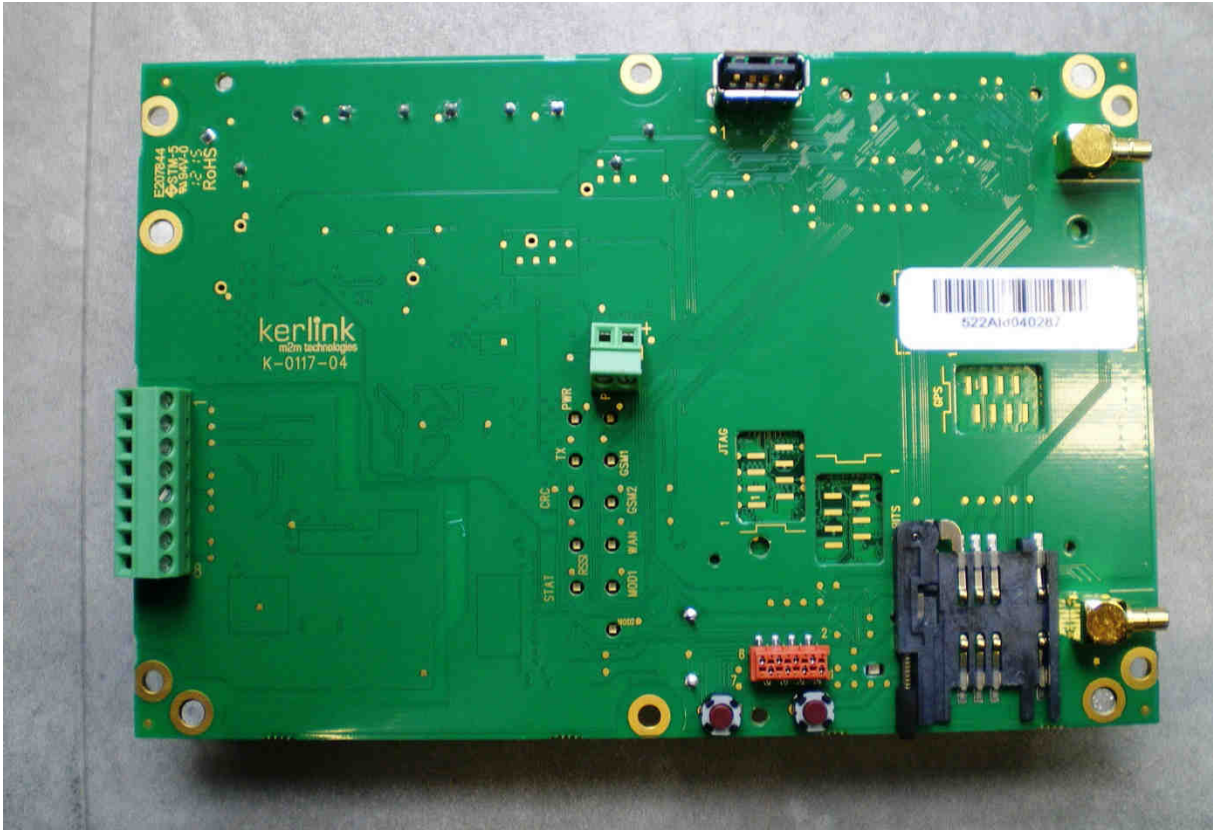


Detail of the top side of the LORA PCB (K-0121-05), radio area without shield :

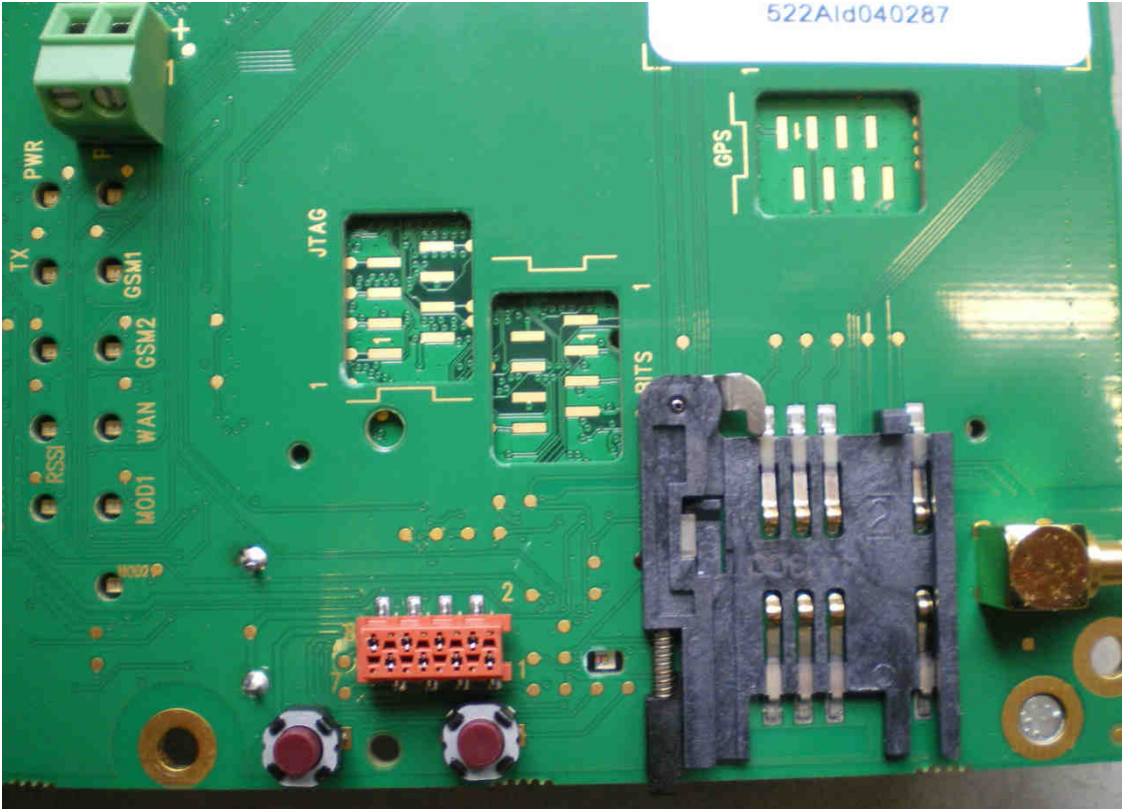


Note: dimensions of the PCB are 159,7 x 106,5 mm.  
Note: dimensions of the shield are 44 x 30 mm.

View of the bottom side of the MOTHER PCB (K-0117-04) :

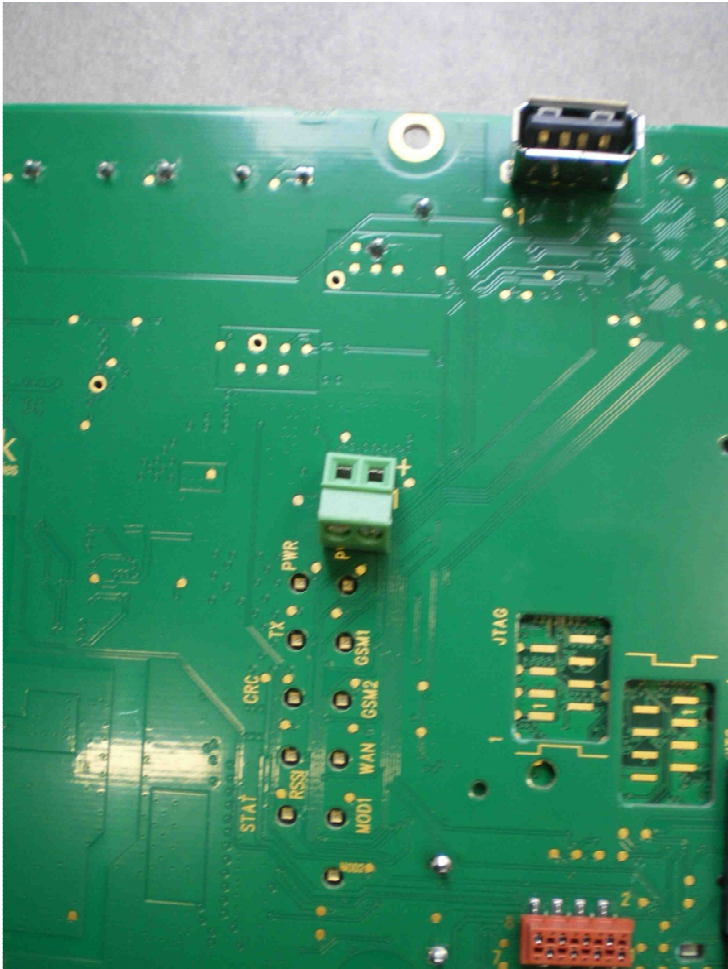


Detail of the bottom side of the MOTHER PCB (K-0117-04), USIM connector area :



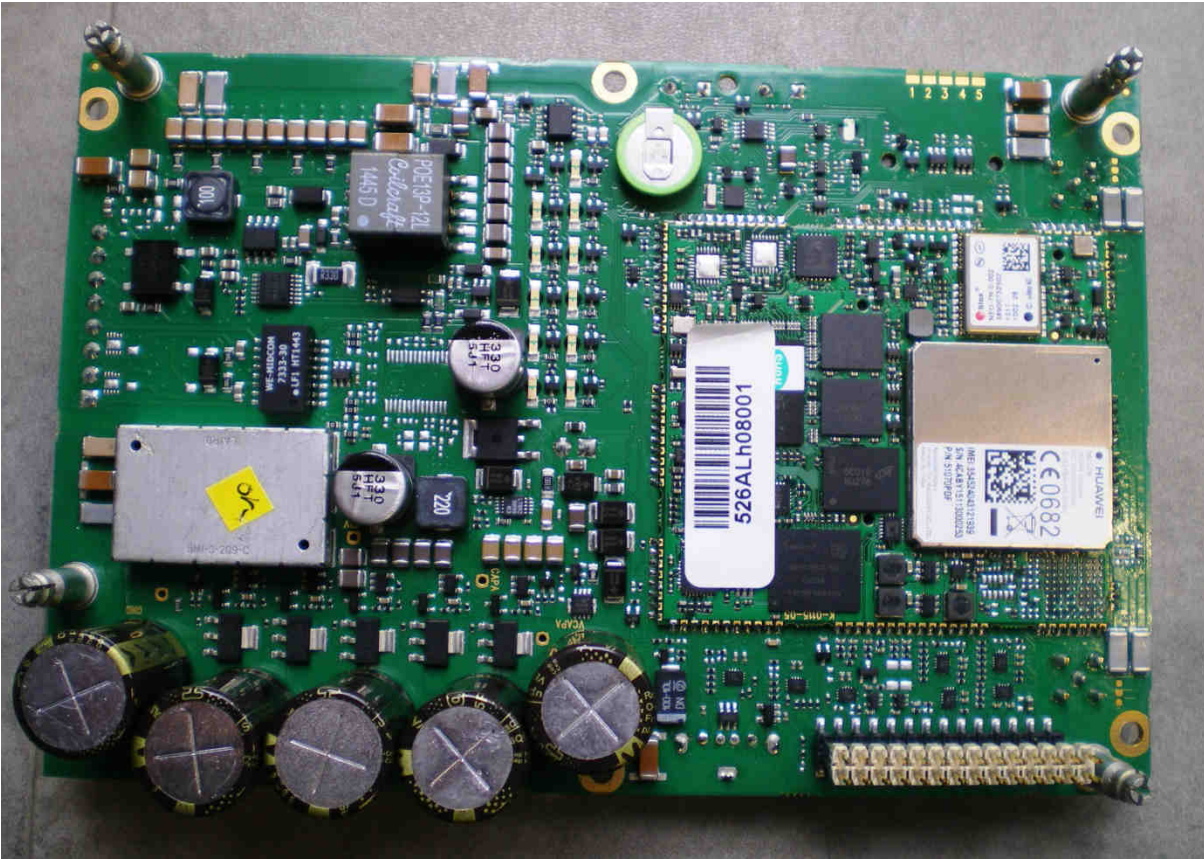
Note: dimensions of the PCB are 159,7 x 106,5 mm.

Detail of the bottom side of the MOTHER PCB (K-0117-04), external power supply area :



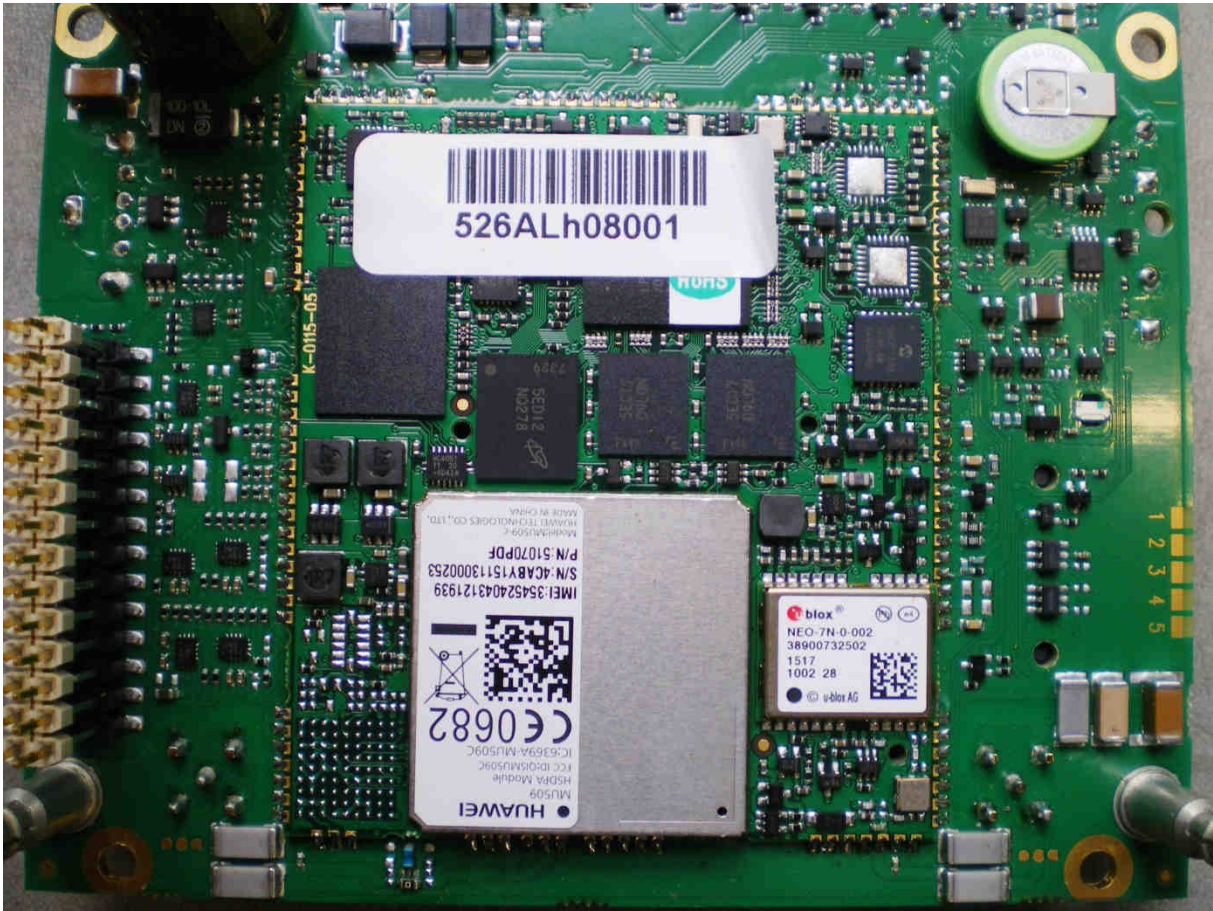
Note: dimensions of the PCB are 159,7 x 106,5 mm.

View of the top side of the MOTHER PCB (K-0117-04) :



Note: dimensions of the PCB are 159,7 x 106,5 mm.

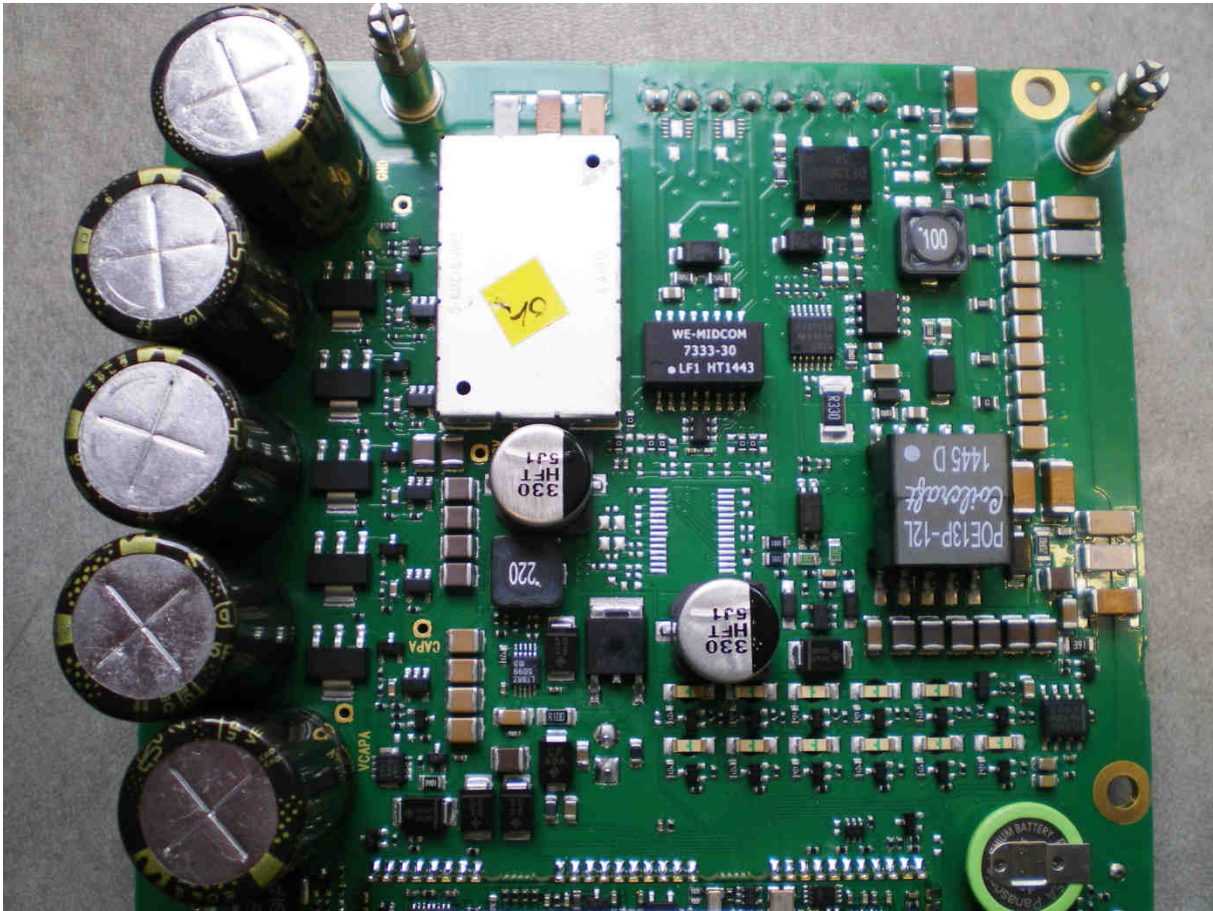
Detail of the top side of the SOP3G PCB (K-0115-05) mounted on MOTHER PCB (K-0117-04) :



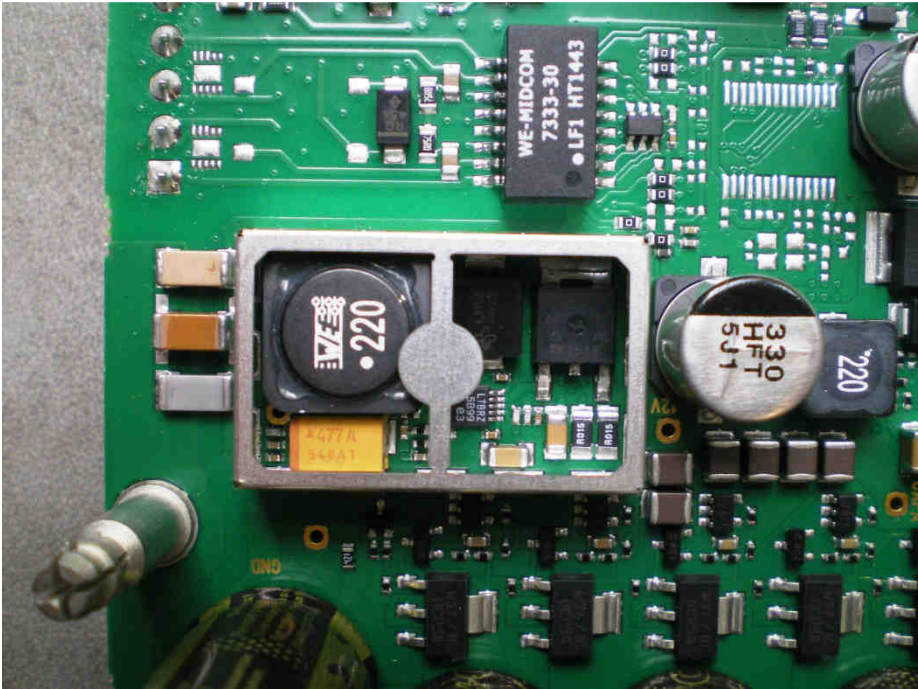
Note: dimensions of the K-0117-04 PCB are 159,7 x 106,5 mm.

Note: dimensions of the K-0115-05 PCB are 66 x 58 mm.

Detail of the top side of the MOTHER PCB (K-0117-04), power area :



Detail of the top side of the MOTHER PCB (K-0117-04), power area without shield :



Note: dimensions of the PCB are 159,7 x 106,5 mm.  
Note : dimensions of the shield are 29,36 x 18.5 mm.