

1 PWB CPU (CGS Carte UC)

1.1 Top side



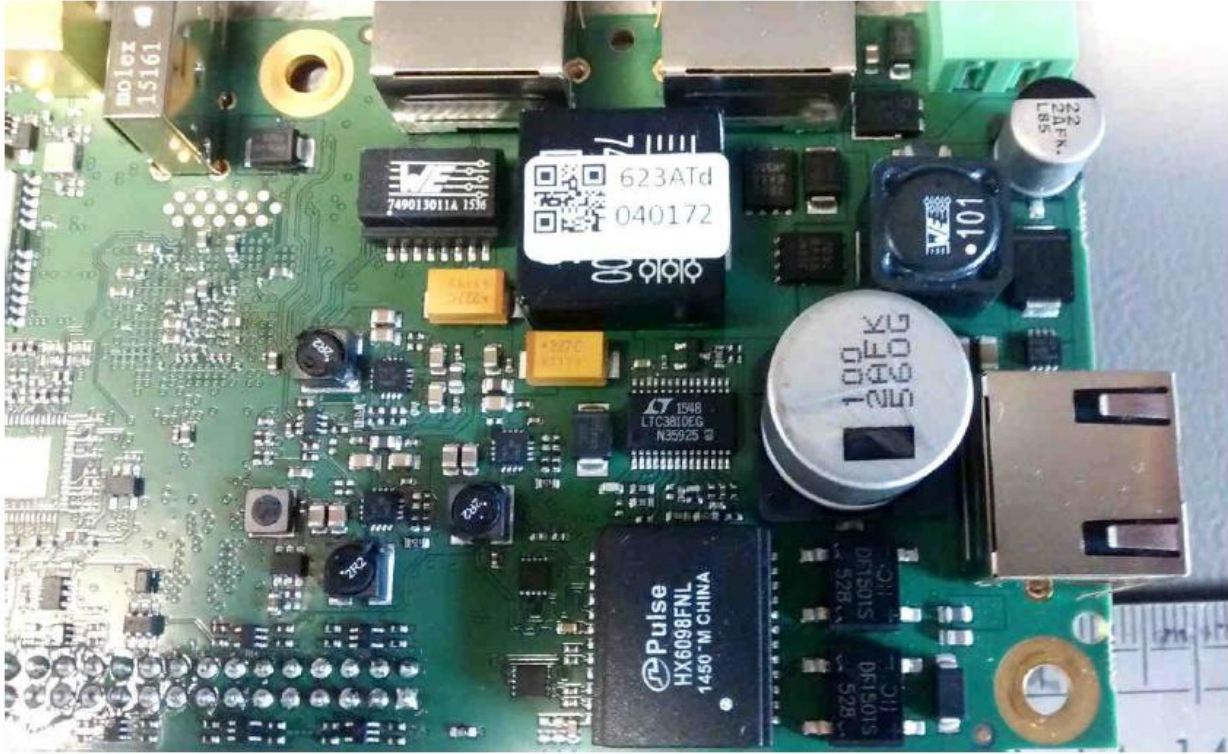
Detail of the left side:



Without shield:



Detail of the right side:



1.2 Bottom side



2 PWB LoRa LOC (CGS Carte LoRa LOC)

2.1 Top side



2.2 Bottom side

Without shield:

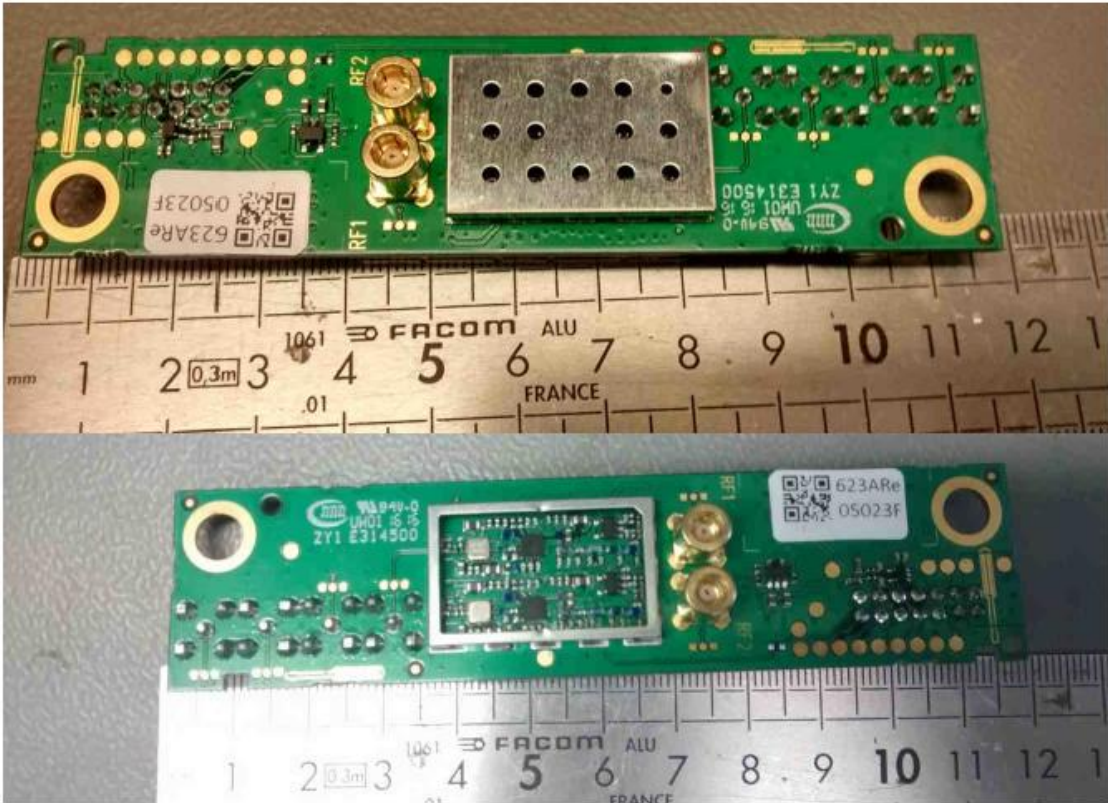


With shield:

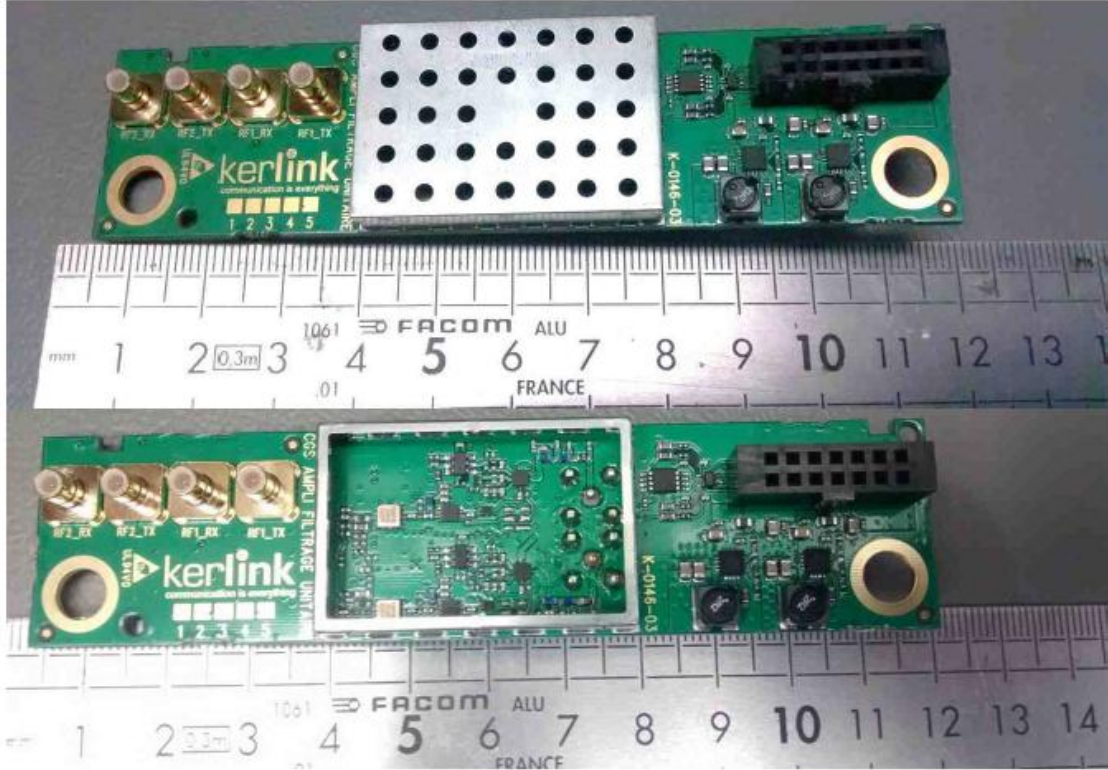


3 PWB Front-End - one module (CGS Carte Ampli Filtrage Unitaire)

3.1 Top side (w/ and w/o shield)

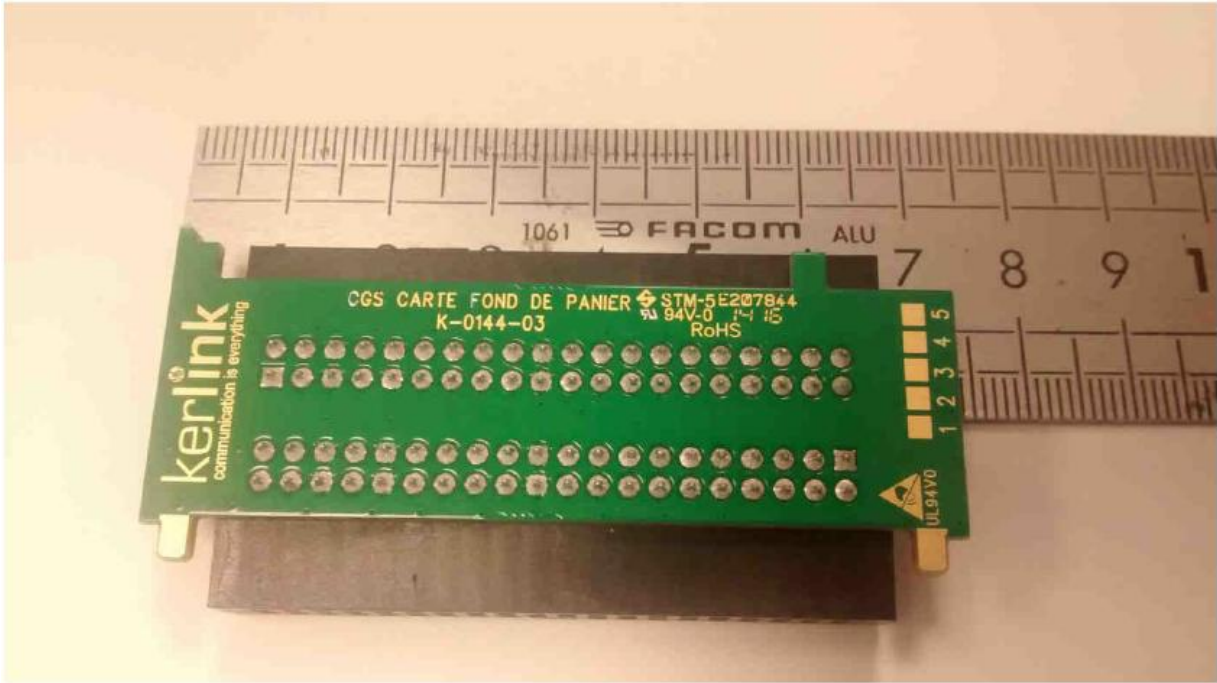


3.2 Bottom side (w/ and w/o shield)

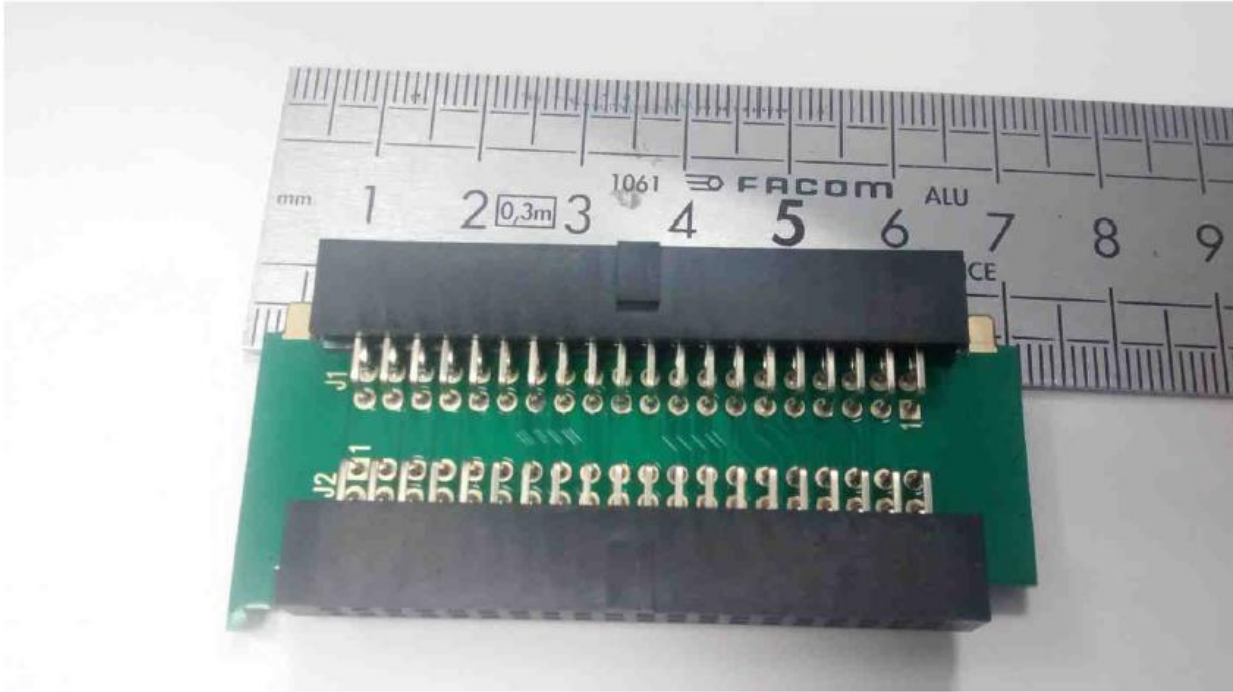


4 PWB Back panel (CGS Carte Fond de Panier)

4.1 Top side



4.2 Bottom side

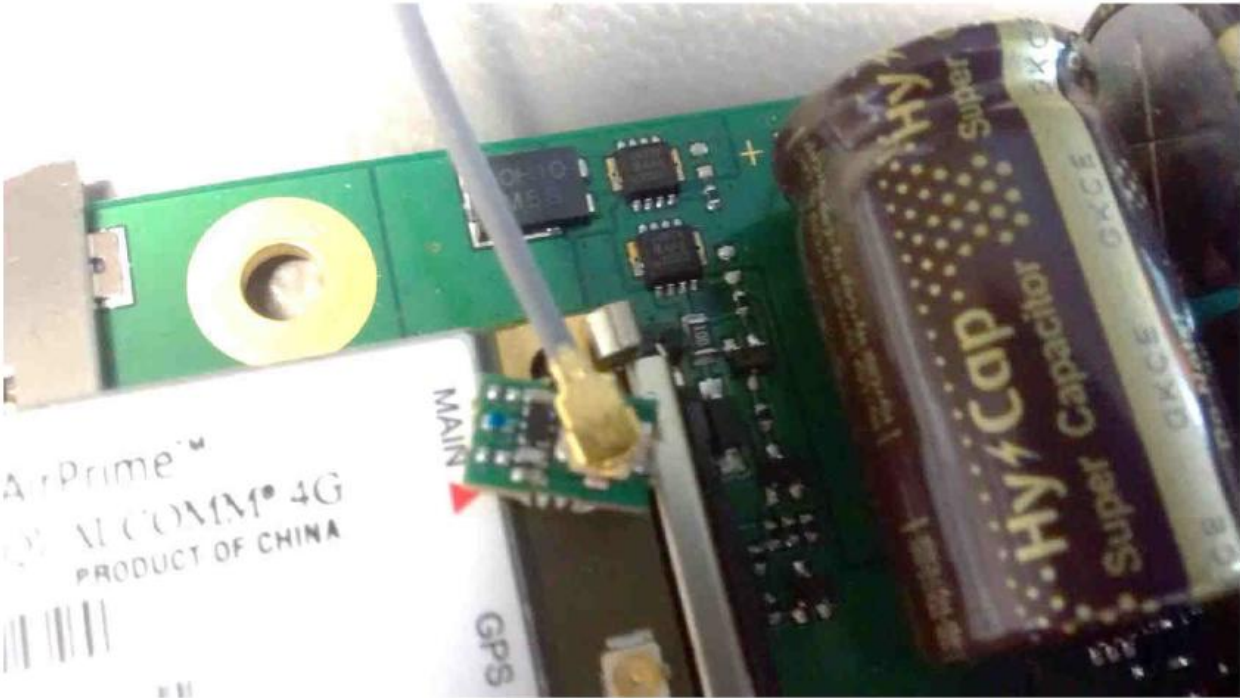


5 PWB WAN (CGS WAN_WLAN)

5.1 Top side



Detail of the notch filter:

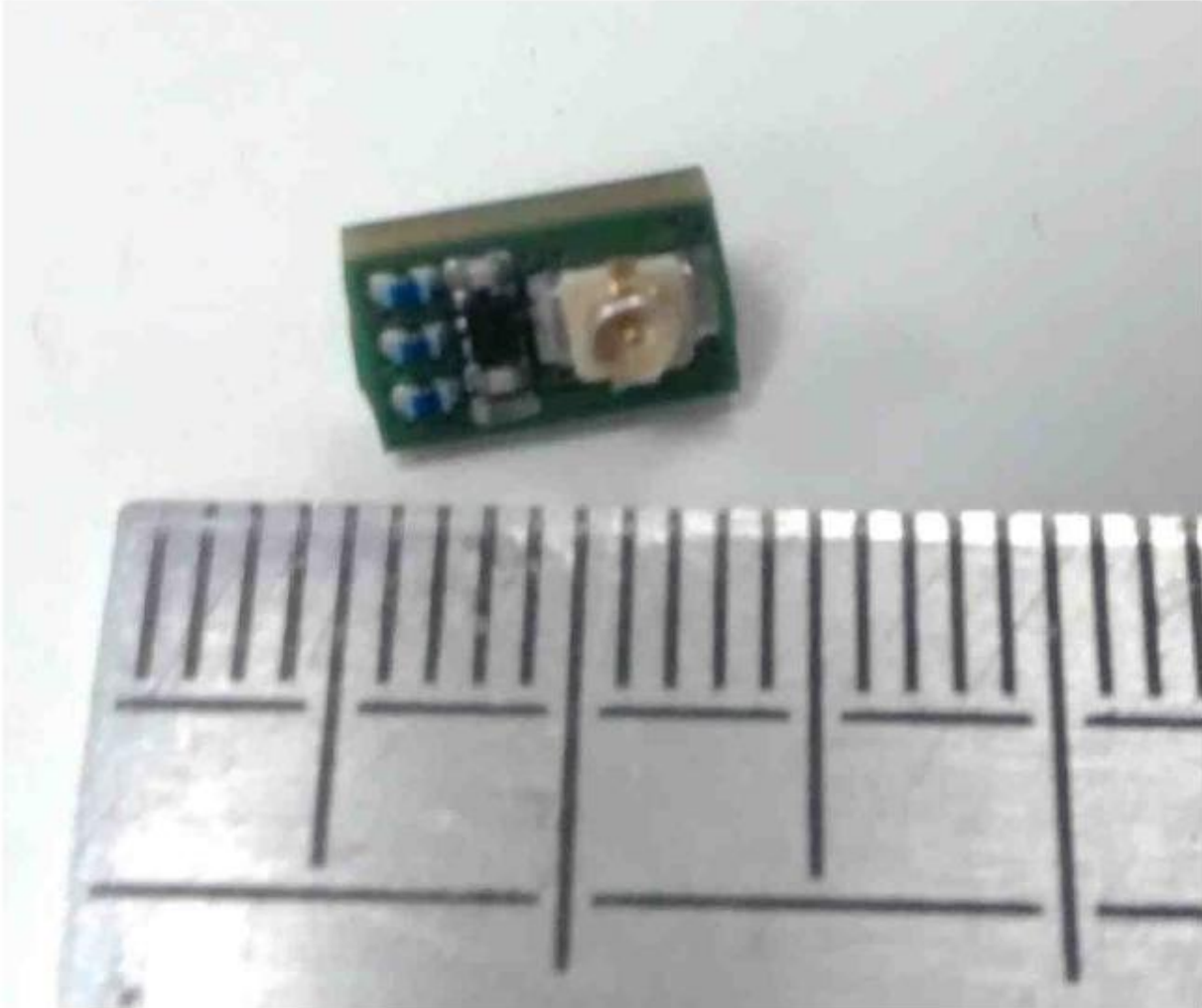


5.2 Bottom side

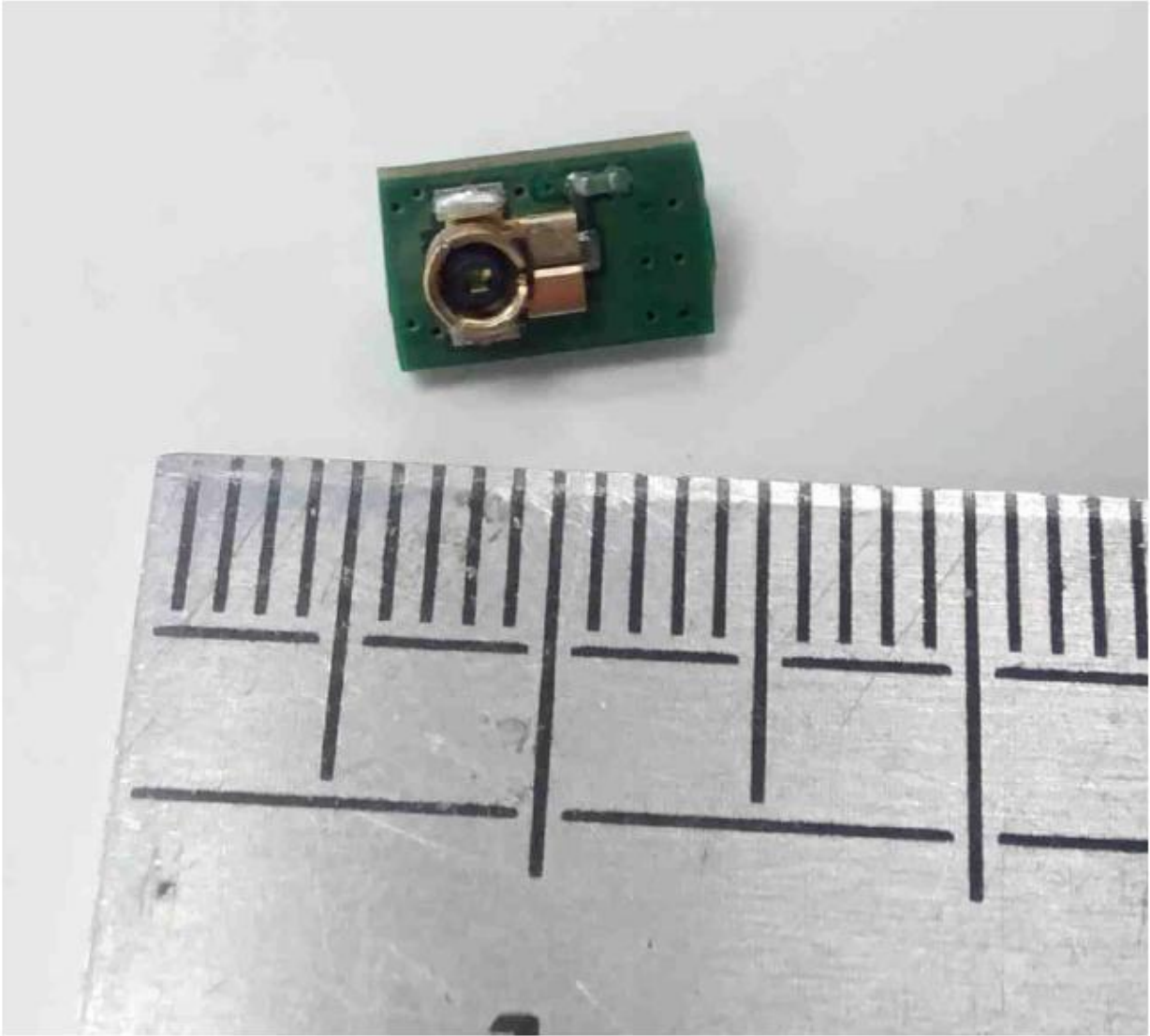


6 PWB notch filter (CGS Notch)

6.1 Top side



6.2 Bottom side



7 Mini PCI Express Module

7.1 Top side



7.2 Bottom side

