

# 1 PWB CPU (CGS Carte UC)

## 1.1 Top side



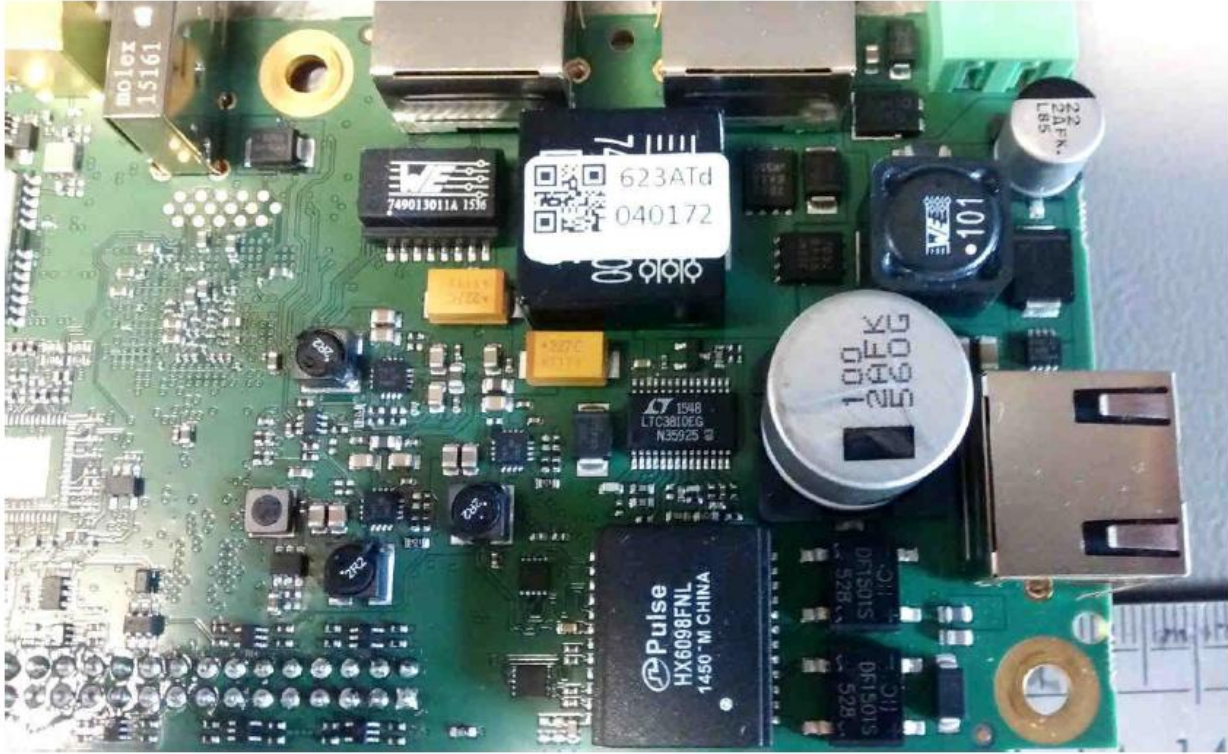
Detail of the left side:



Without shield:



Detail of the right side:



## 1.2 Bottom side



## 2 PWB LoRa LOC (CGS Carte LoRa LOC)

### 2.1 Top side



2.2 Bottom side

Without shield:

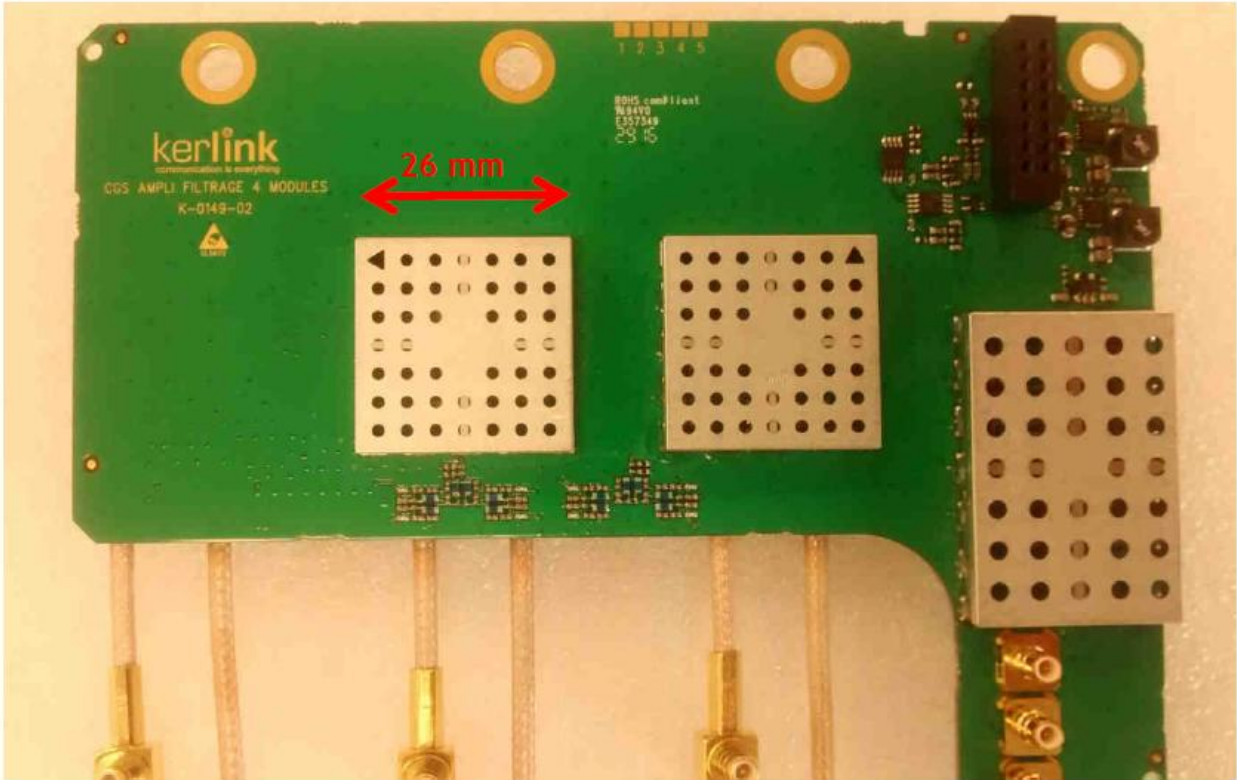


With shield:

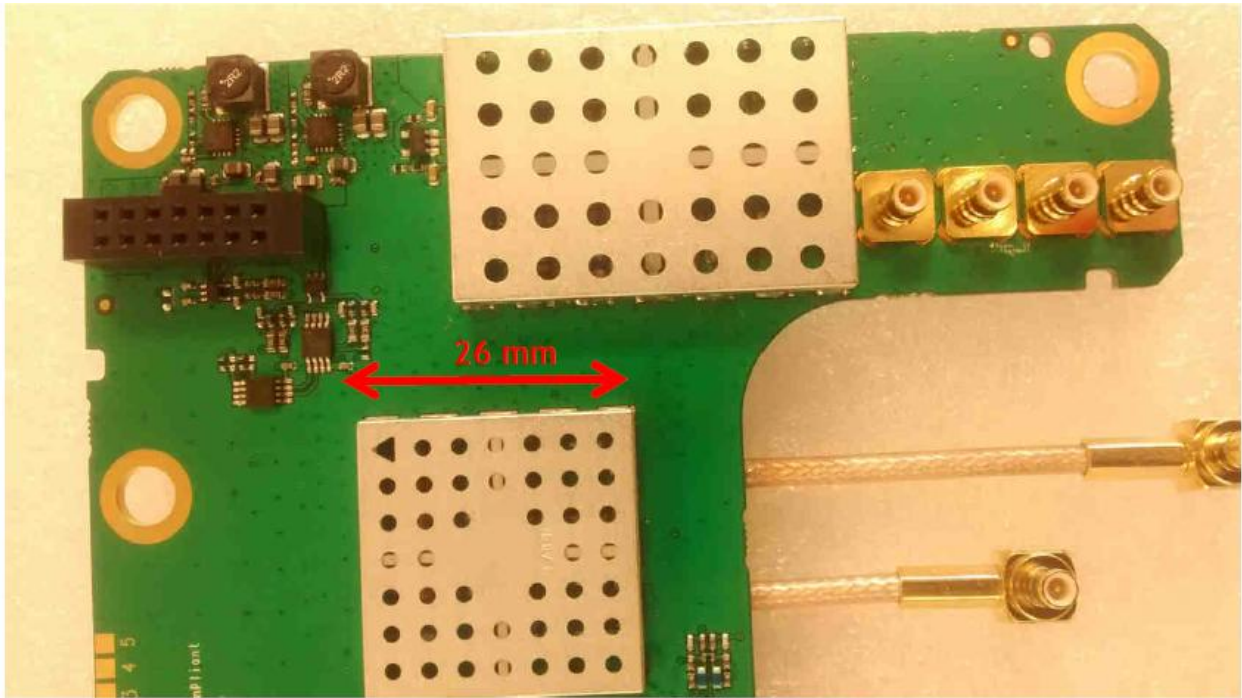


# 3 PWB Front-End - four modules (CGS Carte Ampli Filtrage 4 modules)

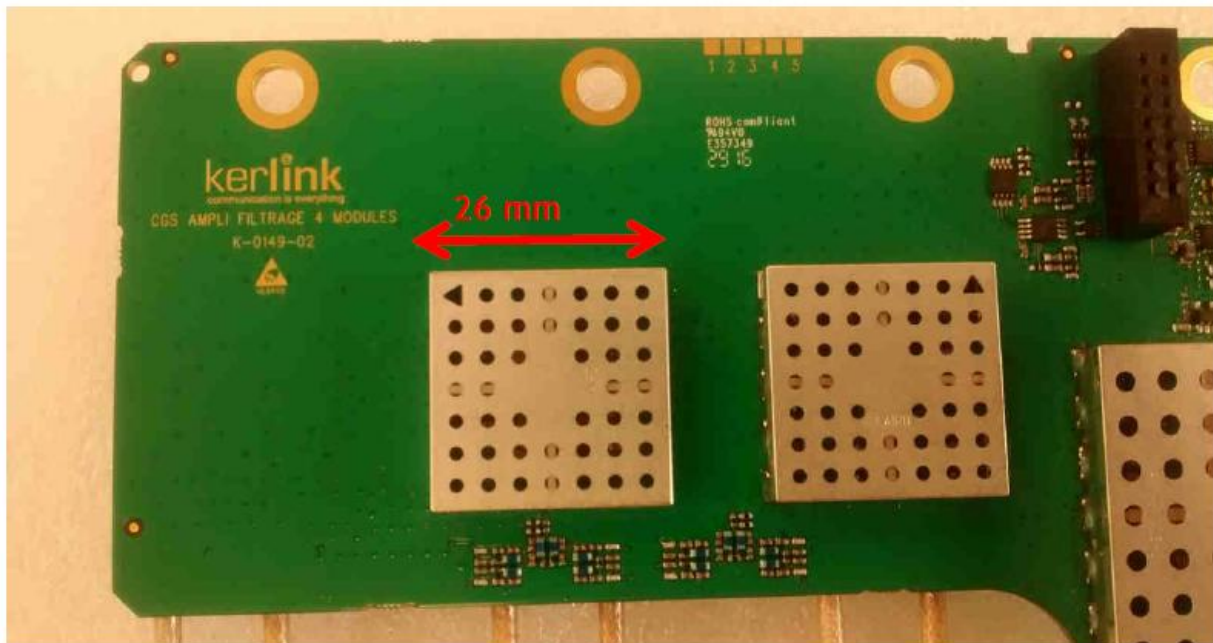
## 3.1 Top side (w/ and w/o shield)



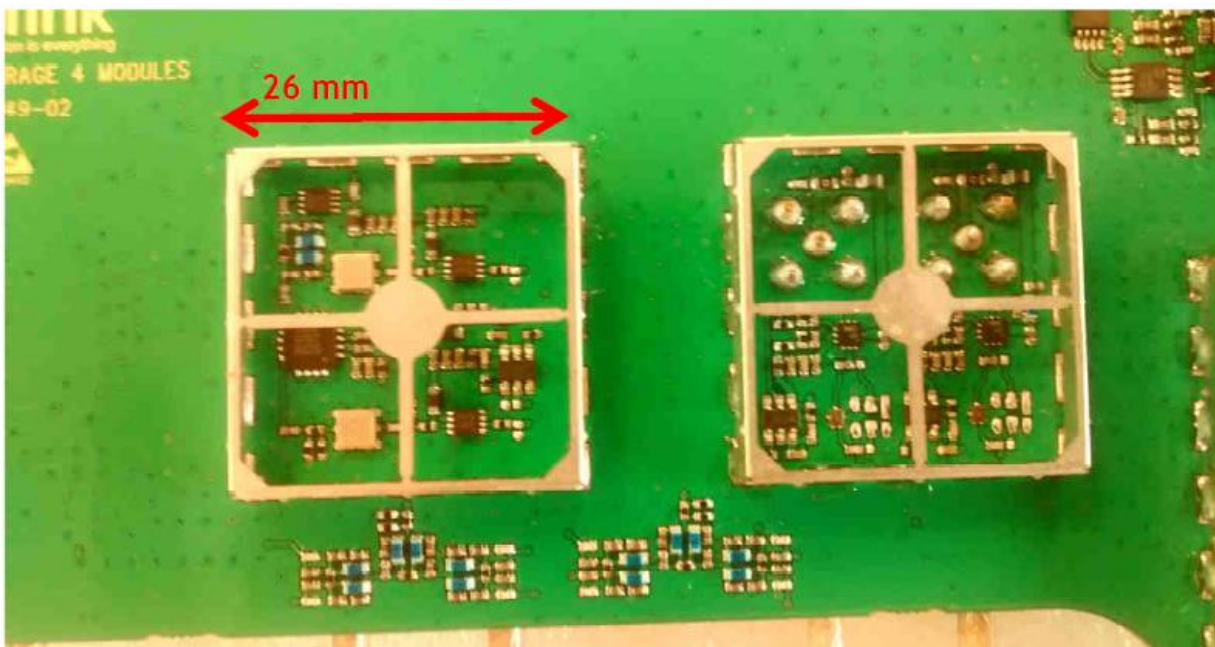
Detail of the right side:

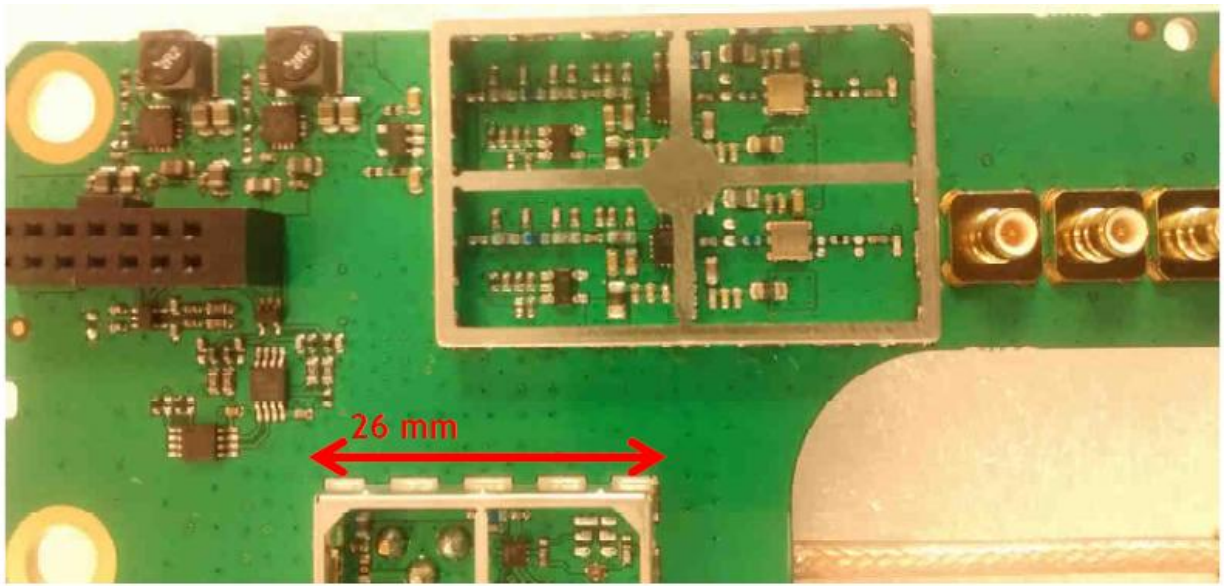


Detail of the left side:

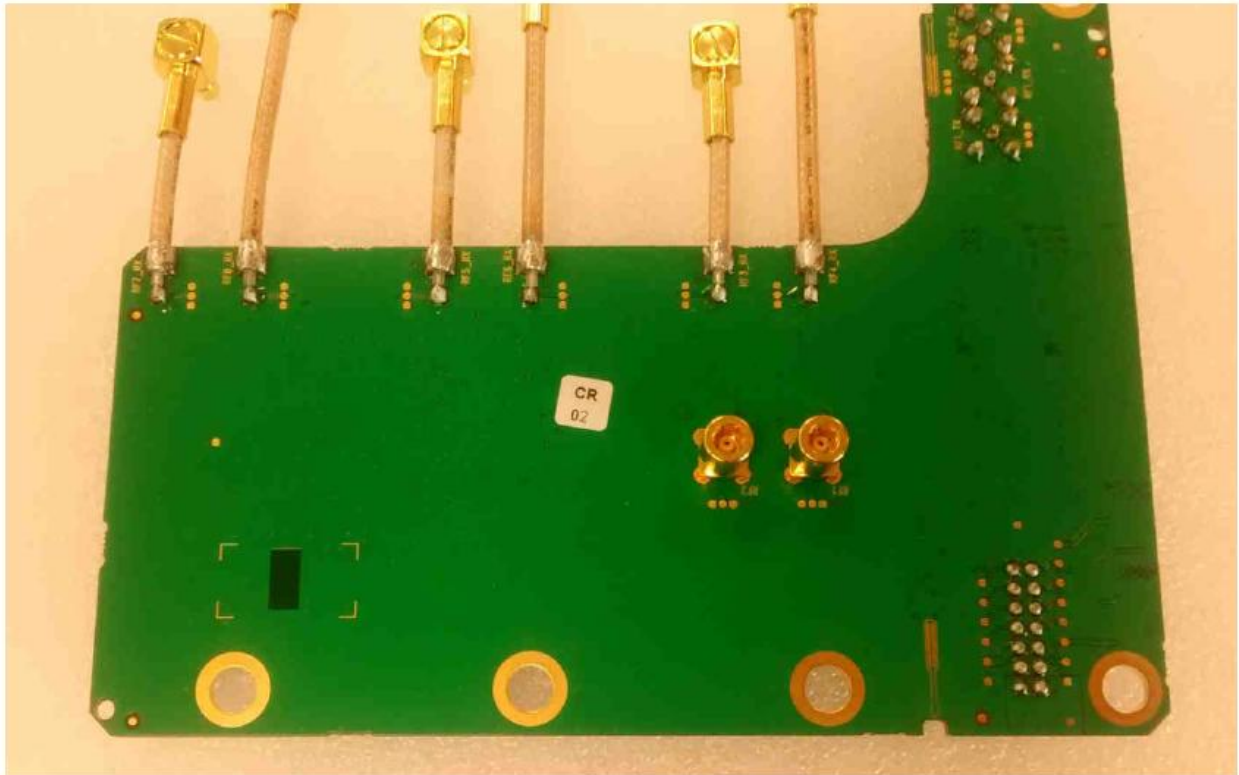


Without shields:





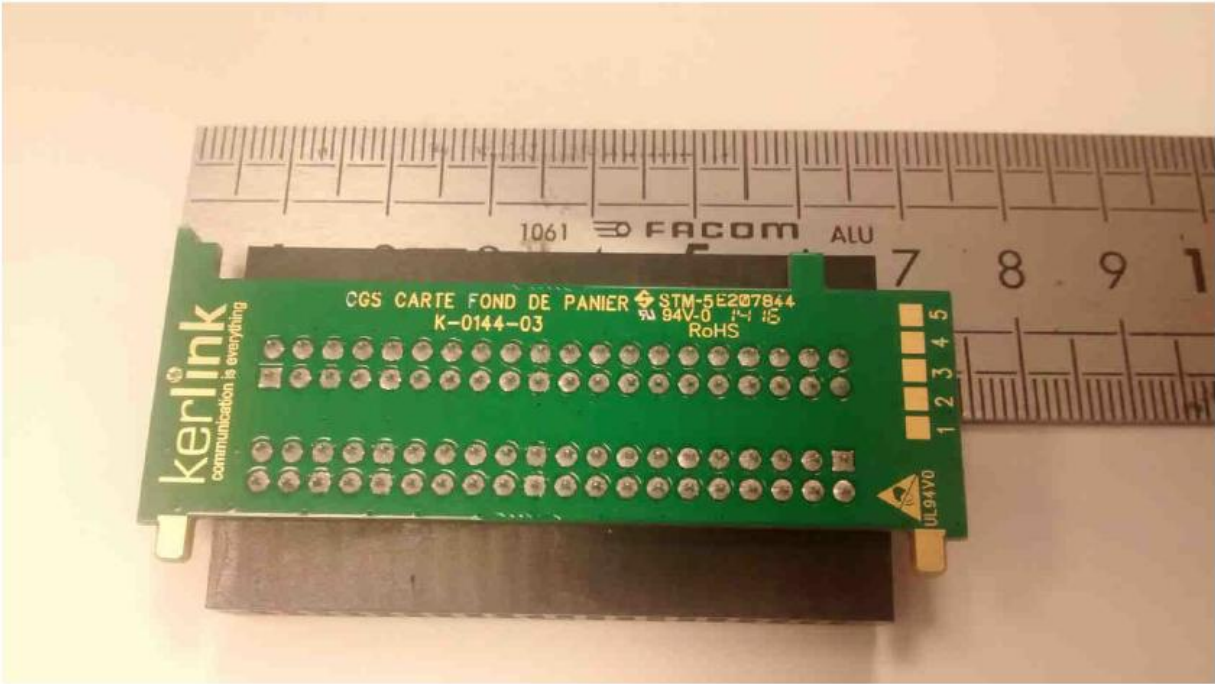
### 3.2 Bottom side





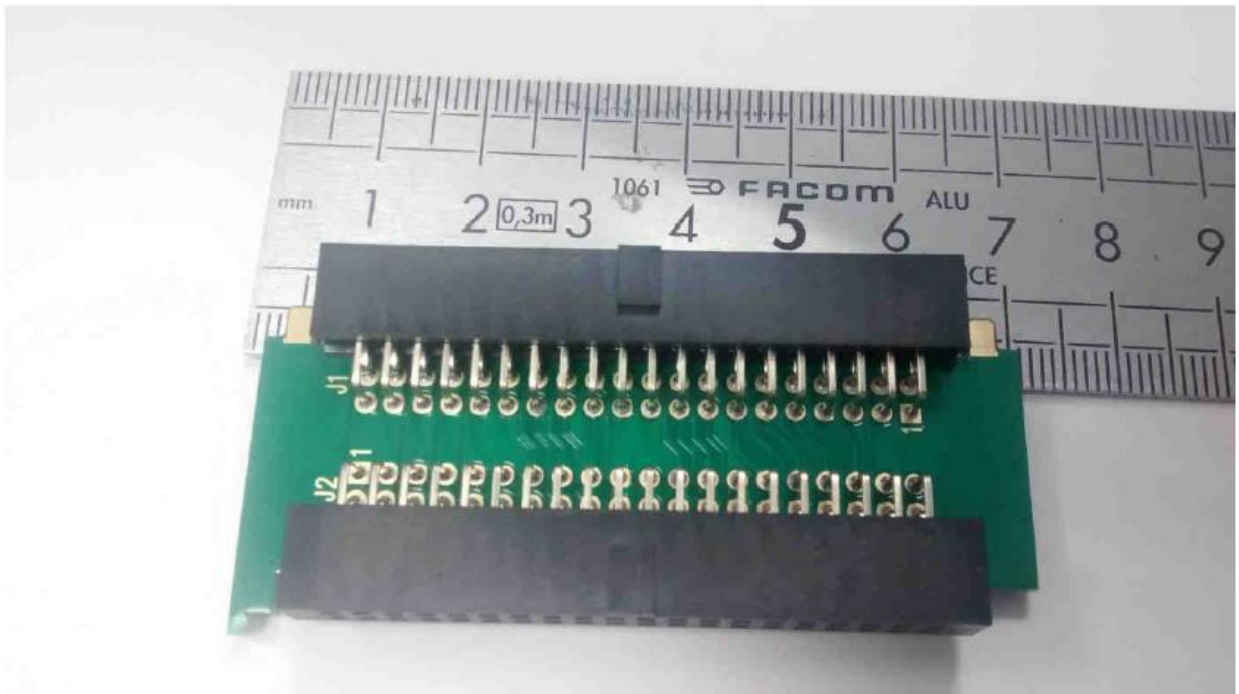
**4 PWB Back panel (CGS Carte Fond de Panier)**

**4.1 Top side**





## 4.2 Bottom side

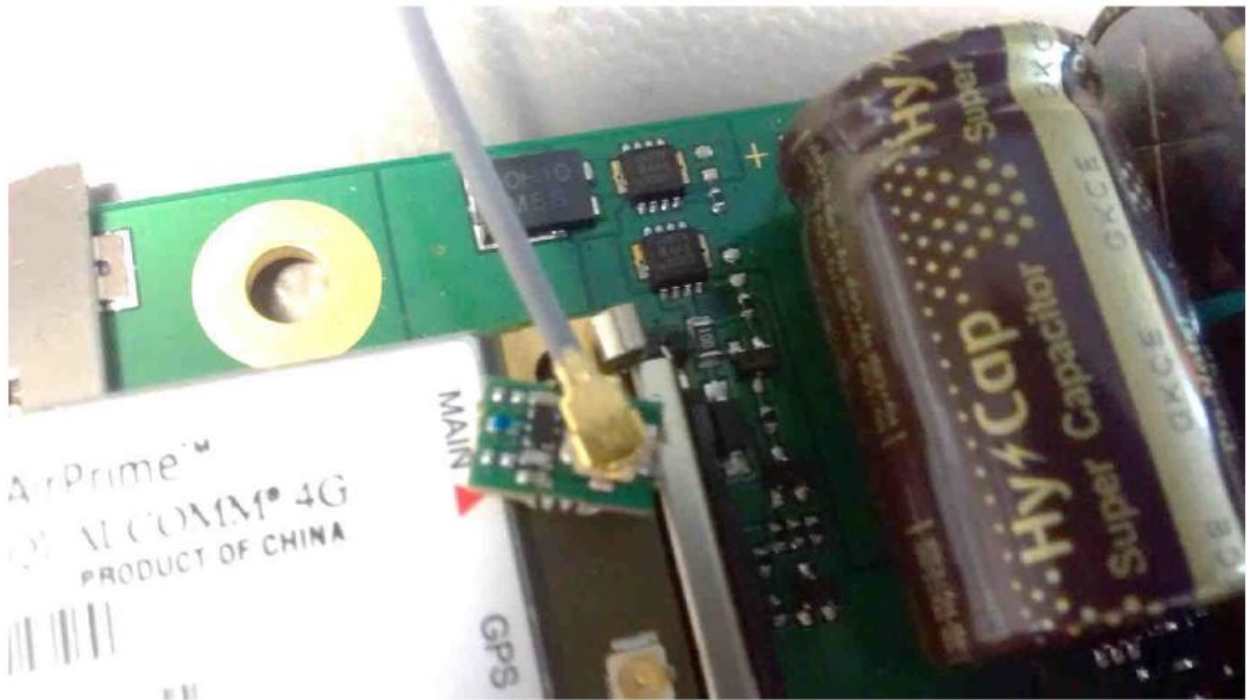


## 5 PWB WAN (CGS WAN\_WLAN)

### 5.1 Top side



Detail of the notch filter:

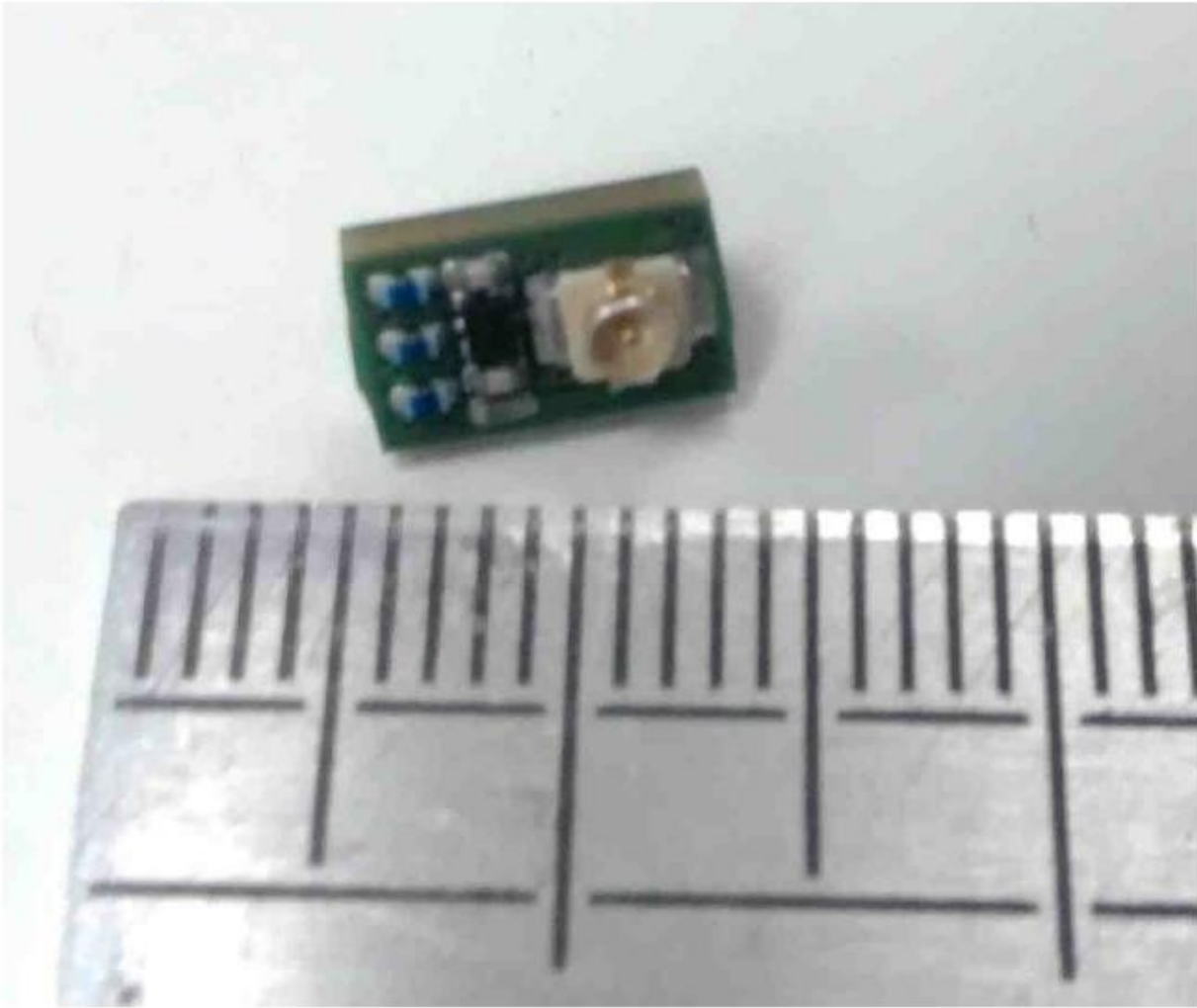


## 5.2 Bottom side

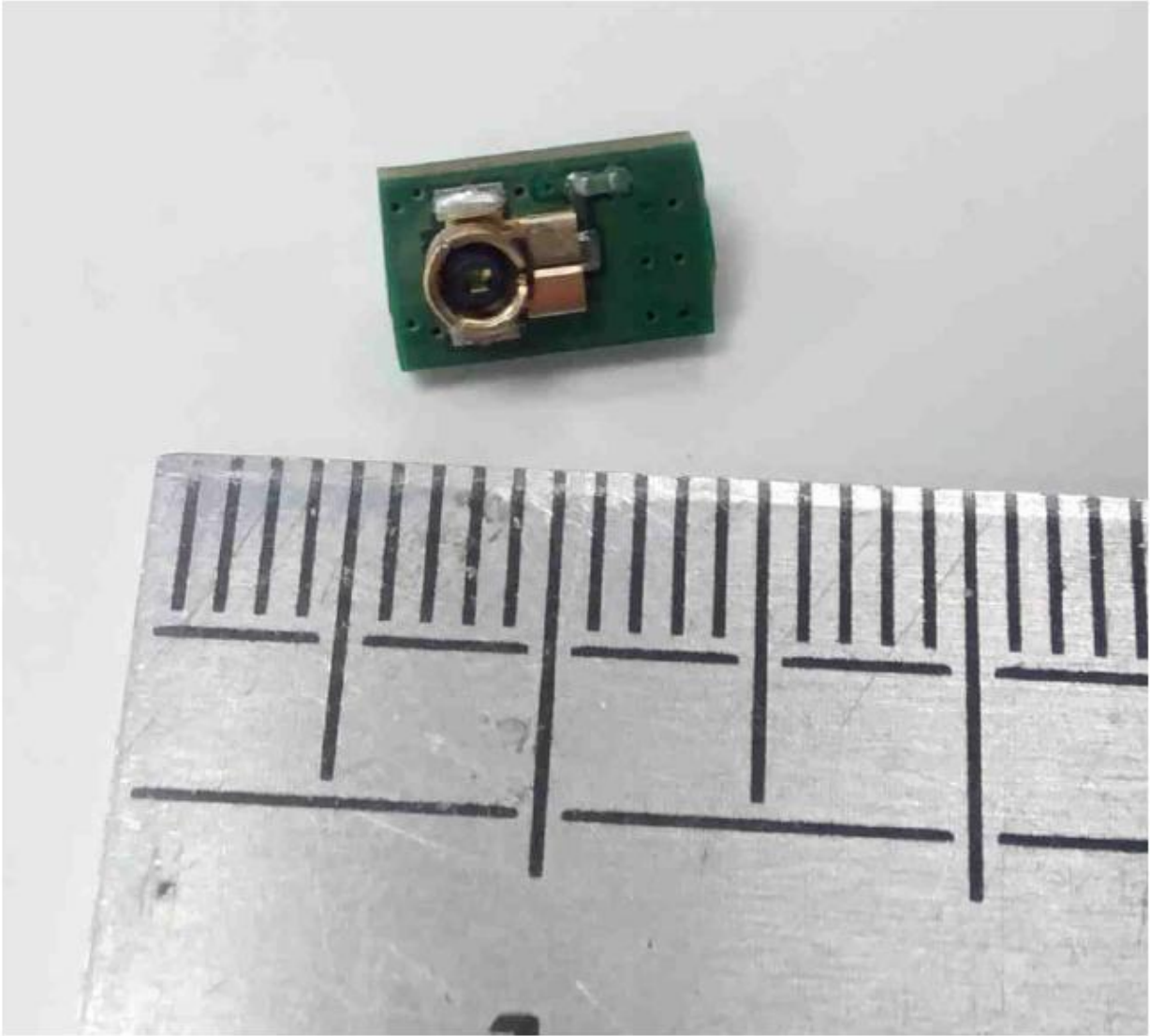


**6 PWB notch filter (CGS Notch)**

**6.1 Top side**



6.2 Bottom side



# 7 Mini PCI Express Module

## 7.1 Top side



## 7.2 Bottom side

