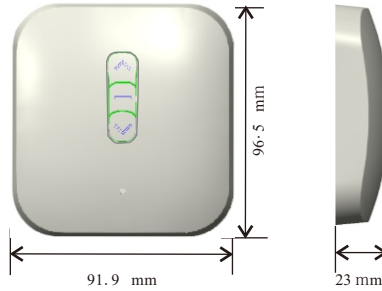


SCE Wireless Switch

Ref 5034181



The failure to respect these instructions annuls Lianda's responsibility and guarantee. LianDa cannot be held responsible for any changes in norms and standards introduced after the publication of this guide. Hereby, LianDa, declares that this product is in compliance with the essential requirements and other relevant provisions of Directive 1999/5/EC.

FCC ID: 2AYFHWMRTA

FCC: This device complies with part 15 of the FCC Rules. Operation is subject to the following two conditions:

- (1) This device may not cause harmful interference.
- (2) This device must accept any interference received, including interference that may cause undesired operation.

Attention that changes or modification not expressly approved by the party responsible for compliance could void the user's authority to operate the equipment.

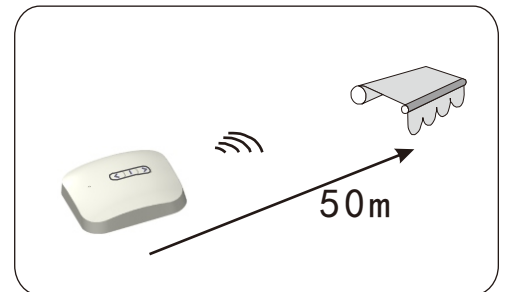
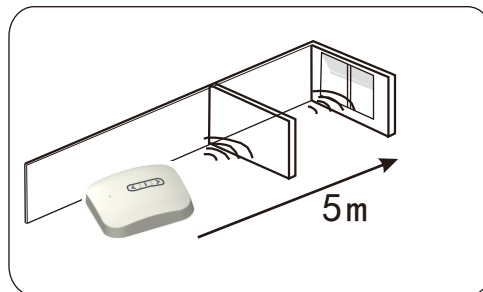
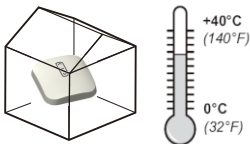
Note: This product has been tested and found to comply with the limits for a Class B digital device, pursuant to Part 15 of the FCC Rules. These limits are designed to provide reasonable protection against harmful interference in a residential installation. This product generates, uses, and can radiate radio frequency energy and, if not installed and used in accordance with the instructions, may cause harmful interference to radio communications. However, there is no guarantee that interference will not occur in a particular installation. If this product does cause harmful interference to radio or television reception, which can be determined by turning the equipment off and on, the user is encouraged to try to correct the interference by one or more of the following measures:

- Reorient or relocate the receiving antenna.
- Increase the separation between the equipment and receiver.
- Connect the equipment into an outlet on a circuit different from that to which the receiver is connected.
- Consult the dealer or an experienced radio/TV technician for help.

Please take attention that changes or modification not expressly approved by the party responsible for compliance could void the user's authority to operate the equipment.



Radio Technology Lianda

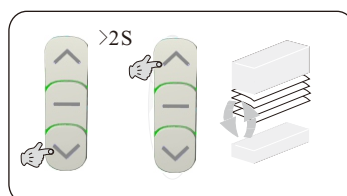
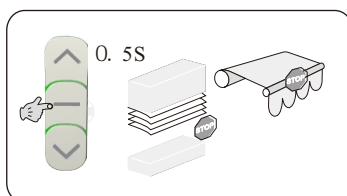
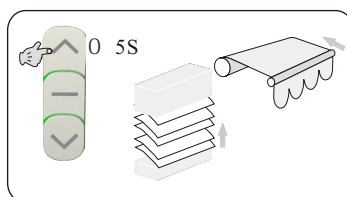
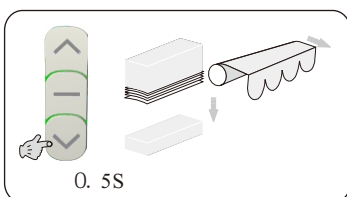


 = 433.92MHz

Before you use this product, please take off the battery insulated spacer.

If the unit is being installed for the first time, please refer to the instruction of the Receiver (Motor)

1. Transmitter's usage



2. Technical Characteristics

Power supply: 3V CR2032
 Protection index: IP30.
 Temperature: +5 °C to +40°C.
 Environment conditions: dry living areas.
 Frequency: 433.92MHz.
 Radio range: 5m ~ 50m.

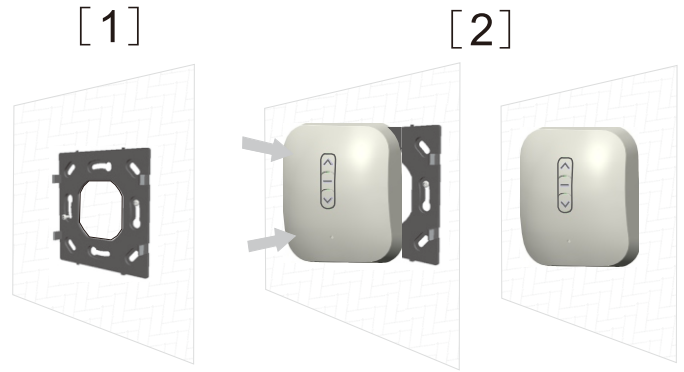
3. Mounting

- [1]. Fix the mounting plate.
- [2]. Insert the control unit inside the bracket.

Recommendations:

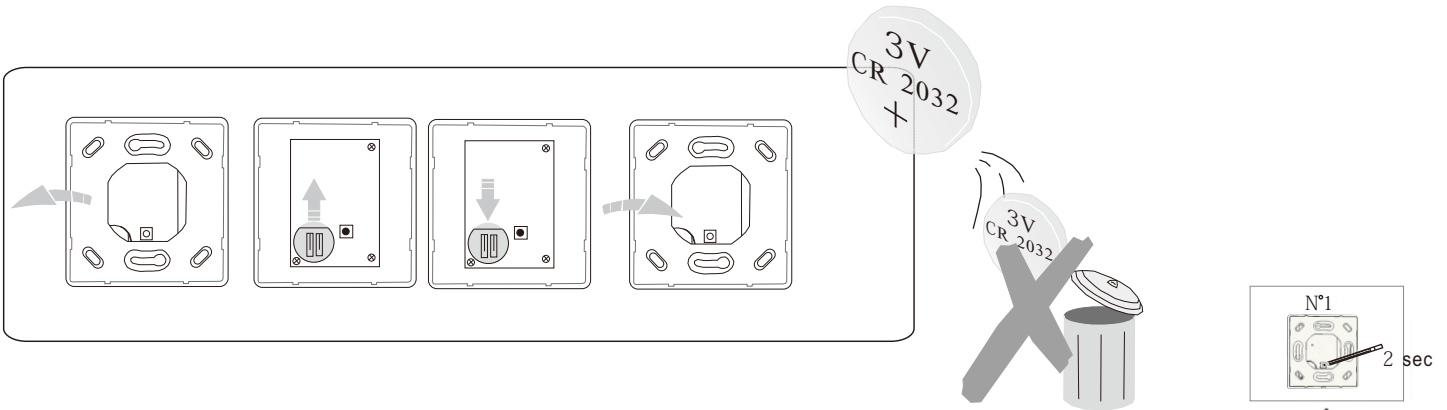
In order not to affect the quality of reception a minimum distance of 30cm between a Wall Mounted and a External Receiver should be maintained.

Wall Mounted should not be installed in the immediate vicinity of metalsurfaces. Powerful local transmitter equipment with a transmission frequency identical to the Wall Mounted can affect its function.



4. Changing the battery

*** Warning: The failure to respect this instruction, cancels Lianda responsibility and guarantee.



5. Add or Delete a transmitter

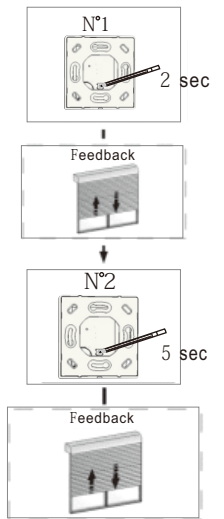
Add a Transmitter

- To Add a transmitter, press the programming button with a thin head thing on the already recorded transmitter 2'' until the motor jogs.
- Select the transmitter to add and press its programming button 5'' until it jogs, then release.

Delete a Transmitter

- To Delete a transmitter, press the programming button on the already recorded transmitter until the motor jogs.
- Select the transmitter to delete and press its programming button until it jogs, then release.

Warning: the motors must have been previously programmed using another single transmitter of the same transmitter.



6. Replacement of a transmitter

(In case you get your transmitter lost or damaged and wish to replace with a new one)

A. Motor

- Switch off the power of the motor5''
- Switch the power on
- Press(0.5'') on UP+STOP+DOWN buttons of a new Transmitter
- Feedback:Short movement of the awning/rolling shutter.
- Press(0.5'') on PROG button of the new Transmitter
- Feedback:Short movement of the awning/rolling shutter.

After that you can use normally your shutter(end limits are ok). Only transmitters had been removed from the memory and replaced by the new one.

B. External Receiver

- Press 7'' on the PROG button of the External Receiver.
- Feedback:Flashing led/short movement of the awning/rolling shutter at 2''. Do not release, after 7'', another feedback short movement of the awning/rolling shutter.
- All the transmitter are canceled from the Memory.

