

FCC TEST REPORT

Client Name : Dongguan Jinhongmei Electronics Co., Ltd
Address : 4~5/F., Block A, No. 9 Hebeiling Road 2, Guanjintou Village, Fenggang Town, Dongguan City, G.D., China 523705
Product Name : Silicone keyboard
Date : Mar. 03, 2022



Shenzhen Anbotek Compliance Laboratory Limited



Contents

1. General Information.....	4
1.1. Client Information.....	4
1.2. Description of Device (EUT).....	4
1.3. Auxiliary Equipment Used During Test.....	5
1.4. Description of Test Modes.....	5
1.5. List of Channels.....	6
1.6. Description of Test Setup.....	7
1.7. Test Equipment List.....	8
1.8. Measurement Uncertainty.....	9
1.9. Description of Test Facility.....	9
2. Summary of Test Results.....	10
3. Conducted Emission Test.....	11
3.1. Test Standard and Limit.....	11
3.2. Test Setup.....	11
3.3. Test Procedure.....	11
3.4. Test Data.....	11
4. Radiated Emission and Band Edge.....	12
4.1. Test Standard and Limit.....	12
4.2. Test Setup.....	13
4.3. Test Procedure.....	14
4.4. Test Data.....	14
5. 20dB Bandwidth Test.....	22
5.1. Test Standard and Limit.....	22
5.2. Test Setup.....	22
5.3. Test Procedure.....	22
5.4. Test Data.....	22
6. Antenna Requirement.....	25
6.1. Test Standard and Requirement.....	25
6.2. Antenna Connected Construction.....	25
APPENDIX I -- TEST SETUP PHOTOGRAPH.....	26
APPENDIX II -- EXTERNAL PHOTOGRAPH.....	27
APPENDIX III -- INTERNAL PHOTOGRAPH.....	30



TEST REPORT

Applicant : Dongguan Jinhongmei Electronics Co., Ltd
Manufacturer : Dongguan Jinhongmei Electronics Co., Ltd
Product Name : Silicone keyboard
Model No. : JHM-107
Trade Mark : N.A.
Rating(s) : Input: DC 3V with "AAA*2" battery

Test Standard(s) : FCC Part15 Subpart C, Paragraph 15.249

Test Method(s) : ANSI C63.10: 2020

The device described above is tested by Shenzhen Anbotek Compliance Laboratory Limited to determine the maximum emission levels emanating from the device and the severe levels of the device can endure and its performance criterion. The measurement results are contained in this test report and Shenzhen Anbotek Compliance Laboratory Limited is assumed full of responsibility for the accuracy and completeness of these measurements. Also, this report shows that the EUT (Equipment Under Test) is technically compliant with the FCC Part 15 Subpart C requirements.

This report applies to above tested sample only and shall not be reproduced in part without written approval of Shenzhen Anbotek Compliance Laboratory Limited.

Date of Receipt

Feb. 22, 2022

Date of Test

Feb. 22~Mar. 03, 2022

Prepared by

Nian Xiu Chen

(Nianxiu Chen)

Approved & Authorized Signer

Kingkong Jin

(Kingkong Jin)

1. General Information

1.1. Client Information

Applicant	:	Dongguan Jinhongmei Electronics Co., Ltd
Address	:	4~5/F., Block A, No. 9 Hebeiling Road 2, Guanjintou Village, Fenggang Town, Dongguan City, G.D., China 523705
Manufacturer	:	Dongguan Jinhongmei Electronics Co., Ltd
Address	:	4~5/F., Block A, No. 9 Hebeiling Road 2, Guanjintou Village, Fenggang Town, Dongguan City, G.D., China 523705
Factory	:	Dongguan Jinhongmei Electronics Co., Ltd
Address	:	4~5/F., Block A, No. 9 Hebeiling Road 2, Guanjintou Village, Fenggang Town, Dongguan City, G.D., China 523705

1.2. Description of Device (EUT)

Product Name	:	Silicone keyboard	
Model No.	:	JHM-107	
Trade Mark	:	N.A.	
Test Power Supply	:	DC 3V	
Test Sample No.	:	1-2-1(Normal Sample), 1-2-2(Engineering Sample)	
Product Description	:	Operation Frequency:	2402.65~2480.65MHz
	:	Number of Channel:	16 Channels
	:	Modulation Type:	GFSK
	:	Antenna Type:	PCB Antenna
	:	Antenna Gain(Peak):	0 dBi (Provided by customer)
	:	Adapter:	N/A
Remark: 1) For a more detailed features description, please refer to the manufacturer's specifications or the User's Manual. 2) This report is for SRD module.			

1.3. Auxiliary Equipment Used During Test

N/A

1.4. Description of Test Modes

To investigate the maximum EMI emission characteristics generates from EUT, the test system was pre-scanning tested base on the consideration of following EUT operation mode or test configuration mode which possible have effect on EMI emission level. Each of these EUT operation mode(s) or test configuration mode(s) mentioned above was evaluated respectively.

Pretest Mode	Description
Mode 1	2402.65MHz
Mode 2	2441.65MHz
Mode 3	2480.65MHz

For Conducted Emission	
Final Test Mode	Description
Mode 1	2402.65MHz
Mode 2	2441.65MHz
Mode 3	2480.65MHz

For Radiated Emission	
Final Test Mode	Description
Mode 1	2402.65MHz
Mode 2	2441.65MHz
Mode 3	2480.65MHz

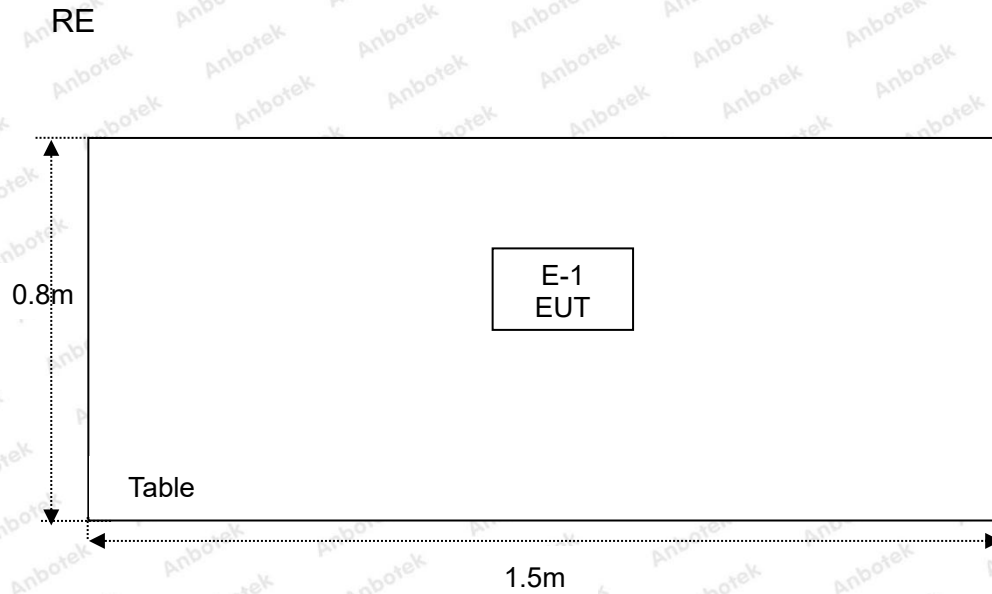
Note:

1. The engineering test program was provided and the EUT was programmed to be in continuously transmitting mode.

1.5. List of Channels

Channel	Freq. (MHz)	Channel	Freq. (MHz)	Channel	Freq. (MHz)	Channel	Freq. (MHz)	Channel	Freq. (MHz)
01	2402.65	02	2407.65	03	2414.65	04	2419.65	05	2422.65
06	2426.65	07	2436.65	08	2439.65	09	2441.65	10	2445.65
11	2453.65	12	2459.65	13	2463.65	14	2466.65	15	2473.65
16	2480.65	/	/	/	/	/	/	/	/

1.6. Description of Test Setup



1.7. Test Equipment List

Item	Equipment	Manufacturer	Model No.	Serial No.	Last Cal.	Cal. Interval
1.	Three Phase V-type Artificial Power Network	CYBERTEK	EM5040DT	E215040DT001	Jul 05, 2021	1 Year
2.	EMI Test Receiver	Rohde & Schwarz	ESCI	100627	Oct. 22, 2021	1 Year
3.	EMI Test Receiver	Rohde & Schwarz	ESR26	101481	Oct. 22, 2021	1 Year
4.	RF Switching Unit	Compliance Direction	RSU-M2	38303	Oct. 22, 2021	1 Year
5.	MAX Spectrum Analysis	Agilent	N9020A	MY51170037	Oct. 22, 2021	1 Year
6.	Preamplifier	SKET Electronic	BK1G18G30D	KD17503	Oct. 22, 2021	1 Year
7.	Double Ridged Horn Antenna	Instruments corporation	GTH-0118	351600	Oct. 22, 2021	2 Year
8.	Bilog Broadband Antenna	Schwarzbeck	VULB9163	VULB 9163-289	Oct. 22, 2021	2 Year
9.	Loop Antenna	Schwarzbeck	FMZB1519B	00053	Oct. 22, 2021	2 Year
10.	Horn Antenna	A-INFO	LB-180400-KF	J211060628	Oct. 22, 2021	2 Year
11.	Pre-amplifier	SONOMA	310N	186860	Oct. 22, 2021	1 Year
12.	EMI Test Software EZ-EMC	SHURPLE	N/A	N/A	N/A	N/A
13.	RF Test Control System	YIHENG	YH3000	2017430	Oct. 22, 2021	1 Year
14.	Power Sensor	DAER	RPR3006W	15I00041SN045	Oct. 22, 2021	1 Year
15.	Power Sensor	DAER	RPR3006W	15I00041SN046	Oct. 22, 2021	1 Year
16.	MXA Spectrum Analysis	KEYSIGHT	N9020A	MY53280032	Oct. 22, 2021	1 Year
17.	MXG RF Vector Signal Generator	Agilent	N5182A	MY48180656	Oct. 22, 2021	1 Year
18.	Signal Generator	Agilent	E4421B	MY41000743	Oct. 22, 2021	1 Year
19.	DC Power Supply	IVYTECH	IV3605	1804D360510	Oct. 22, 2021	1 Year
20.	Constant Temperature Humidity Chamber	ZHONGJIAN	ZJ-KHWS80B	N/A	Oct. 22, 2021	1 Year

1.8. Measurement Uncertainty

Radiation Uncertainty	:	Ur = 3.9 dB (Horizontal)
	:	Ur = 3.8 dB (Vertical)
Conduction Uncertainty	:	Uc = 3.4 dB

1.9. Description of Test Facility

The test facility is recognized, certified, or accredited by the following organizations:

FCC-Registration No.: 184111

Shenzhen Anbotek Compliance Laboratory Limited, EMC Laboratory has been registered and fully described in a report filed with the (FCC) Federal Communications Commission. The acceptance letter from the FCC is maintained in our files. Registration No. 184111.

ISED-Registration No.: 8058A

Shenzhen Anbotek Compliance Laboratory Limited, EMC Laboratory has been registered and fully described in a report filed with the (ISED) Innovation, Science and Economic Development Canada. The acceptance letter from the ISED is maintained in our files. Registration 8058A.

Test Location

Shenzhen Anbotek Compliance Laboratory Limited.

1/F, Building D, Sogood Science and Technology Park, Sanwei community, Hangcheng Street, Bao'an District, Shenzhen, Guangdong, China.518102



2. Summary of Test Results

Standard Section	Test Item	Result
15.203	Antenna Requirement	PASS
15.207	Conducted Emission	N/A
15.249	Radiated Emission	PASS
15.215(c)	20dB Bandwidth	PASS
15.249(c)	Band Edge	PASS

Remark: "N/A" is an abbreviation for Not Applicable.



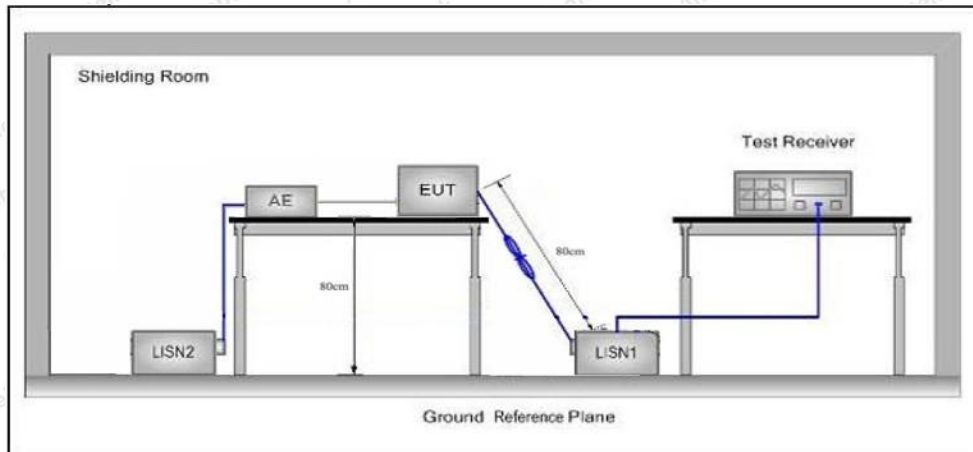
3. Conducted Emission Test

3.1. Test Standard and Limit

Test Standard	FCC Part15 Section 15.207		
Test Limit	Frequency	Maximum RF Line Voltage (dBuV)	
		Quasi-peak Level	Average Level
	150kHz~500kHz	66 ~ 56 *	56 ~ 46 *
	500kHz~5MHz	56	46
5MHz~30MHz	60	50	

Remark: (1) *Decreasing linearly with logarithm of the frequency.
 (2) The lower limit shall apply at the transition frequency.

3.2. Test Setup



3.3. Test Procedure

The EUT system is connected to the power mains through a line impedance stabilization network (L.I.S.N.). This provides a 50ohm coupling impedance for the EUT system. Please refer the block diagram of the test setup and photographs. Both sides of AC line are checked to find out the maximum conducted emission. In order to find the maximum emission levels, the relative positions of equipment and all of the interface cables shall be changed according to FCC ANSI C63.10-2020 on Conducted Emission Measurement.

The bandwidth of test receiver (ESCI) set at 9kHz.

The frequency range from 150kHz to 30MHz is checked.

3.4. Test Data

Not applicable for equipment operated with DC power supply.

4. Radiated Emission and Band Edge

4.1. Test Standard and Limit

Test Standard	FCC Part15 C Section 15.209 and 15.205				
Test Limit	Frequency (MHz)	Field strength (microvolt/meter)	Limit (dBuV/m)	Remark	Measurement distance (m)
	0.009MHz~0.490MHz	2400/F(kHz)	-	-	300
	0.490MHz-1.705MHz	24000/F(kHz)	-	-	30
	1.705MHz-30MHz	30	-	-	30
	30MHz~88MHz	100	40.0	Quasi-peak	3
	88MHz~216MHz	150	43.5	Quasi-peak	3
	216MHz~960MHz	200	46.0	Quasi-peak	3
	960MHz~1000MHz	500	54.0	Quasi-peak	3
	Above 1000MHz	500	54.0	Average	3
-		74.0	Peak	3	

Remark:

(1)The lower limit shall apply at the transition frequency.

(2) 15.35(b), Unless otherwise specified, the limit on peak radio frequency emissions is 20dB above the maximum permitted average emission limit applicable to the equipment under test. This peak limit applies to the total peak emission level radiated by the device.

Test Standard	FCC Part15 C Section 15.249					
Test Limit	Frequency (MHz)	Field Strength of fundamental ((millivolts /meter)	Field Strength of Harmonics (microvolts/meter)	Limit (dBuV/m)	Remark	Measurement distance (m)
	2400~2483.5	50	-	114.0	Peak	3
	2400~2483.5	50	-	94.0	Average	3
	2400~2483.5	-	500	74.0	Peak	3
	2400~2483.5	-	500	54.0	Average	3

Remark:

(1) 15.35(b), Unless otherwise specified, the limit on peak radio frequency emissions is 20dB above the maximum permitted average emission limit applicable to the equipment under test. This peak limit applies to the total peak emission level radiated by the device.

4.2. Test Setup

Figure 1. Below 30MHz

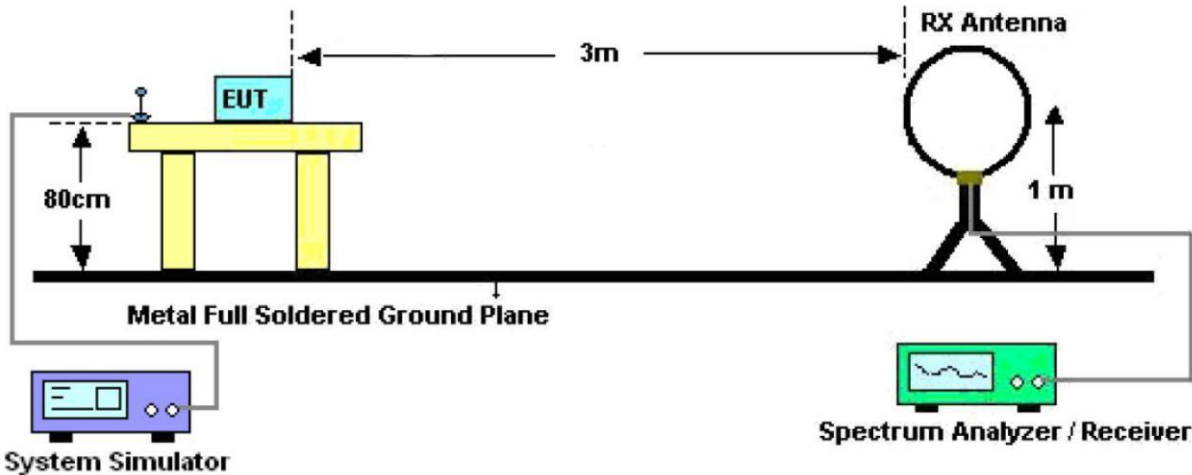


Figure 2. 30MHz to 1GHz

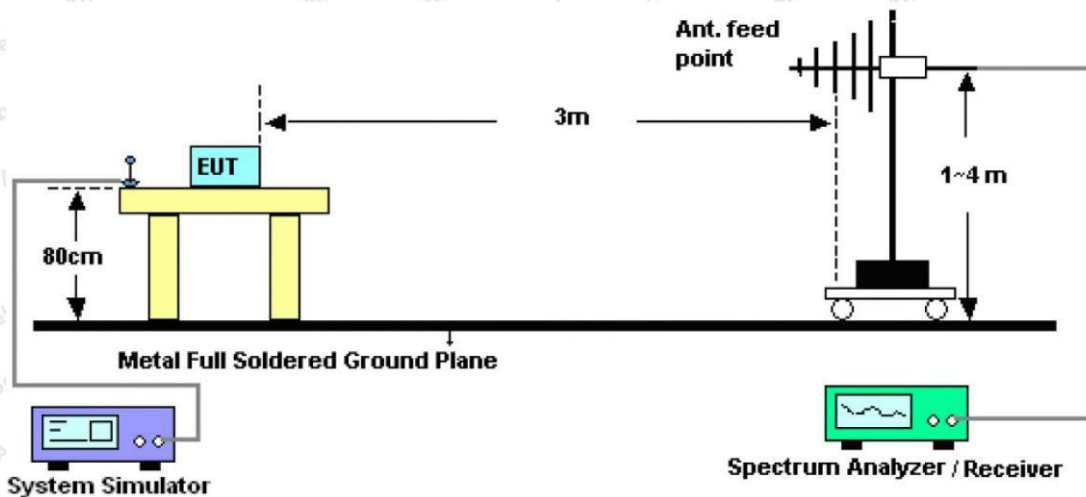
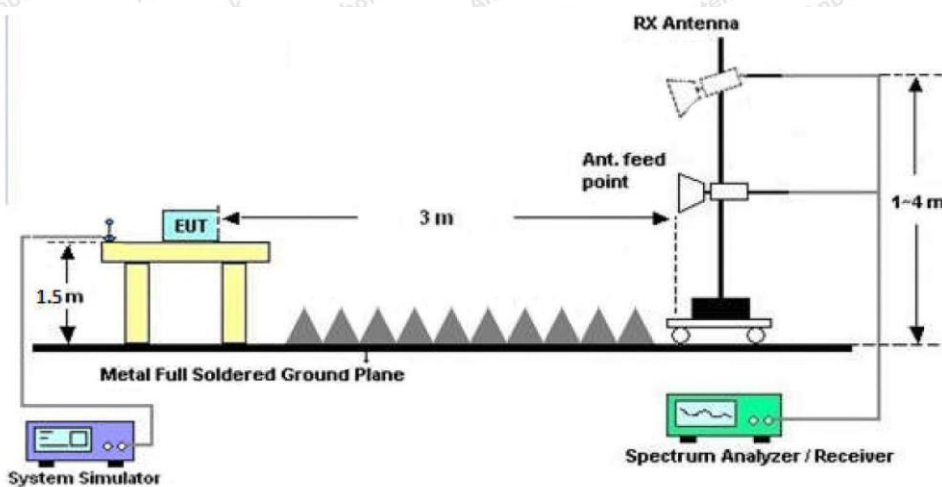


Figure 3. Above 1 GHz



4.3. Test Procedure

For below 1GHz: The EUT is placed on a turntable, which is 0.8m above the ground plane.

For above 1GHz: The EUT is placed on a turntable, which is 1.5m above the ground plane.

The turn table can rotate 360 degrees to determine the position of the maximum emission level. The EUT is set 3 meters away from the receiving antenna which is mounted on an antenna tower. The antenna can be moved up and down from 1 to 4 meters to find out the maximum emission level. Rotated the EUT through three orthogonal axes to determine the maximum emissions, both horizontal and vertical polarization of the antenna are set on test. The EUT is tested in 9*6*6 Chamber. The device is evaluated in xyz orientation.

For the radiated emission test above 1GHz:

Place the measurement antenna away from each area of the EUT determined to be a source of emissions at the specified measurement distance, while keeping the measurement antenna aimed at the source of emissions at each frequency of significant emissions, with polarization oriented for maximum response. The measurement antenna may have to be higher or lower than the EUT, depending on the radiation pattern of the emission and staying aimed at the emission source for receiving the maximum signal. The final measurement antenna elevation shall be that which maximizes the emissions. The measurement antenna elevation for maximum emissions shall be restricted to a range of heights of from 1 m to 4 m above the ground or reference ground plane.

For 9kHz to 150kHz, Set the spectrum analyzer as:

RBW = 200Hz, VBW = 1kHz, Detector = Quasi-Peak, Trace mode = Max hold, Sweep - auto couple.

For 150kHz to 30MHz, Set the spectrum analyzer as:

RBW = 9kHz, VBW = 30kHz, Detector = Quasi-Peak, Trace mode = Max hold, Sweep - auto couple.

For 30MHz to 1000MHz, Set the spectrum analyzer as:

RBW = 100kHz, VBW = 300kHz, Detector = Quasi-Peak, Trace mode = Max hold, Sweep - auto couple.

For above 1GHz, Set the spectrum analyzer as:

RBW = 1MHz, VBW = 1MHz, Detector = Peak, Trace mode = Max hold, Sweep - auto couple.

RBW = 1MHz, VBW = 10Hz, Detector = Average, Trace mode = Max hold, Sweep - auto couple.

4.4. Test Data

PASS

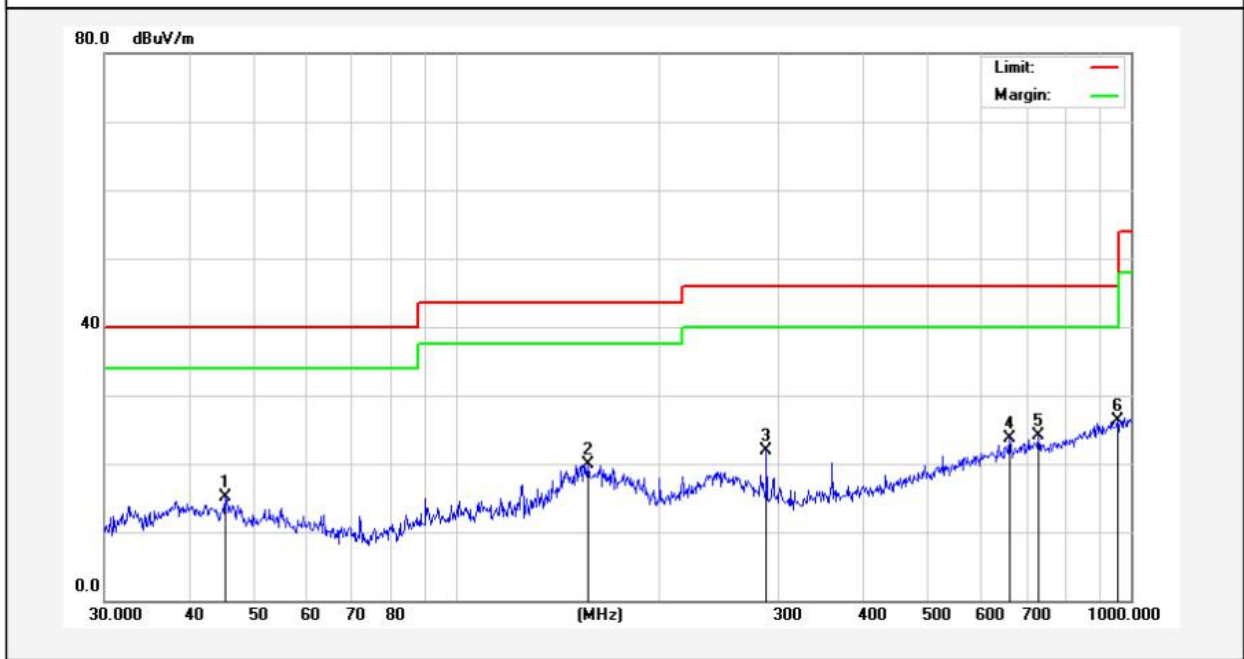
During the test, Pre-scan all kind of the place mode (X-axis, Y-axis, Z-axis), and found the X-axis is the worst case.

The test results of 9kHz-30MHz was attenuated more than 20dB below the permissible limits, so the results don't record in the report.

During the test, pre-scan all the modes, only the worst case is recorded in the report.

Test Results (30~1000MHz)

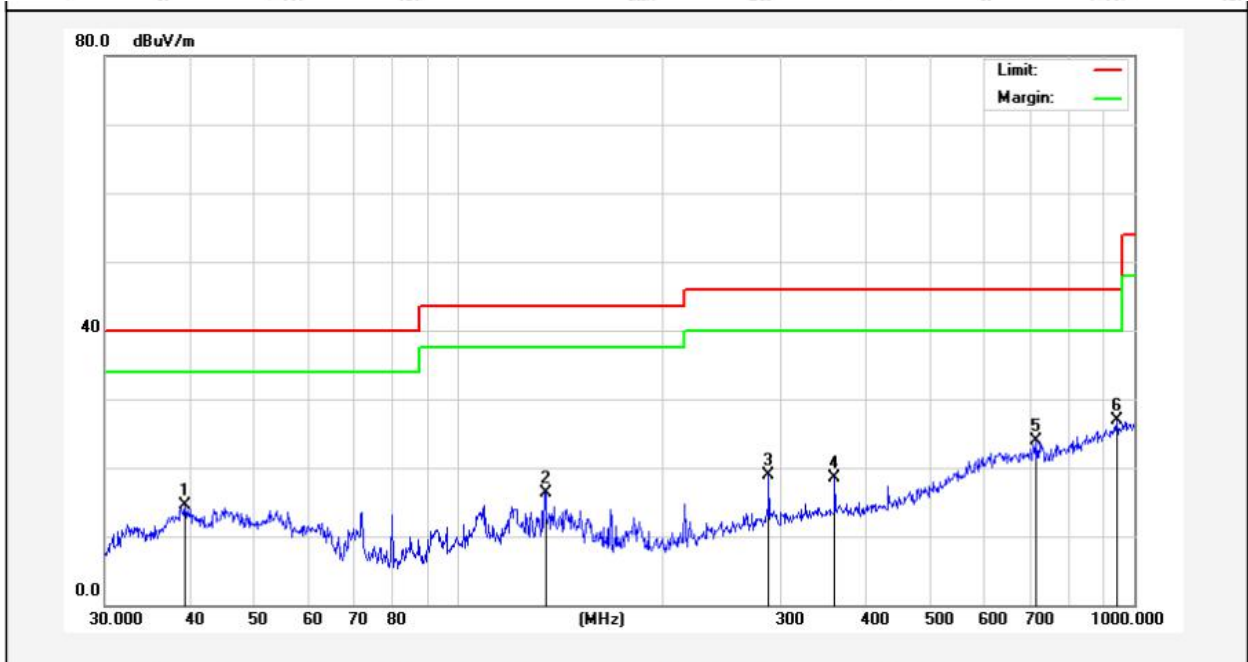
Test Mode: Mode 1
 Power Source: DC 3V
 Polarization: Horizontal
 Temp.(°C)/Hum.(%RH): 21.3°C/50%RH



No.	Freq. (MHz)	Reading (dBuV)	Factor (dB/m)	Result (dBuV/m)	Limit (dBuV/m)	Over Limit (dB)	Detector	Height (cm)	degree (deg)	Remark
1	45.3755	30.36	-15.25	15.11	40.00	-24.89	QP			
2	156.4578	43.44	-23.61	19.83	43.50	-23.67	QP			
3	287.9904	40.09	-18.20	21.89	46.00	-24.11	QP			
4	661.1505	34.19	-10.49	23.70	46.00	-22.30	QP			
5	729.3583	33.53	-9.52	24.01	46.00	-21.99	QP			
6	955.4381	31.89	-5.55	26.34	46.00	-19.66	QP			

Test Results (30~1000MHz)

Test Mode: Mode 1
 Power Source: DC 3V
 Polarization: Vertical
 Temp.(°C)/Hum.(%RH): 21.3°C/50%RH



No.	Freq. (MHz)	Reading (dBuV)	Factor (dB/m)	Result (dBuV/m)	Limit (dBuV/m)	Over Limit (dB)	Detector	Height (cm)	degree (deg)	Remark
1	39.4371	29.29	-14.85	14.44	40.00	-25.56	QP			
2	134.5592	38.20	-21.80	16.40	43.50	-27.10	QP			
3	287.9904	35.60	-16.67	18.93	46.00	-27.07	QP			
4	360.4476	33.41	-14.88	18.53	46.00	-27.47	QP			
5	716.6820	33.65	-9.69	23.96	46.00	-22.04	QP			
6	942.1305	32.56	-5.74	26.82	46.00	-19.18	QP			

Test Results (1GHz-25GHz)

Test channel: Lowest						
Peak value:						
Frequency (MHz)	Reading (dBuV)	Factor (dB/m)	Result (dBuV/m)	Limit Line (dBuV/m)	Over Limit (dB)	polarization
2402.65	80.85	9.75	90.60	114.00	-23.40	Vertical
4805.30	27.53	15.27	42.80	74.00	-31.20	Vertical
7207.95	27.76	18.09	45.85	74.00	-28.15	Vertical
9610.60	28.29	23.76	52.05	74.00	-21.95	Vertical
12013.25	*			74.00		Vertical
14415.90	*			74.00		Vertical
2402.65	81.93	9.75	91.68	114.00	-22.32	Horizontal
4805.30	27.28	15.27	42.55	74.00	-31.45	Horizontal
7207.95	27.94	18.09	46.03	74.00	-27.97	Horizontal
9610.60	27.72	23.76	51.48	74.00	-22.52	Horizontal
12013.25	*			74.00		Horizontal
14415.90	*			74.00		Horizontal
Average value:						
Frequency (MHz)	Reading (dBuV)	Factor (dB/m)	Result (dBuV/m)	Limit (dBuV/m)	Over Limit (dB)	polarization
2402.65	70.78	9.75	80.53	94.00	-13.47	Vertical
4805.30	15.80	15.27	31.07	54.00	-22.93	Vertical
7207.95	16.81	18.09	34.90	54.00	-19.10	Vertical
9610.60	17.76	23.76	41.52	54.00	-12.48	Vertical
12013.25	*			54.00		Vertical
14415.90	*			54.00		Vertical
2402.65	72.16	9.75	81.91	94.00	-12.09	Horizontal
4805.30	15.61	15.27	30.88	54.00	-23.12	Horizontal
7207.95	16.97	18.09	35.06	54.00	-18.94	Horizontal
9610.60	17.23	23.76	40.99	54.00	-13.01	Horizontal
12013.25	*			54.00		Horizontal
14415.90	*			54.00		Horizontal

Remark:

- 1.Result =Reading + Factor
2. "*" means the test results were attenuated more than 20dB below the permissible limits, so the results don't record in the report.

Test Results (1GHz-25GHz)

Test channel: Middle						
Peak value:						
Frequency (MHz)	Reading (dBuV)	Factor (dB/m)	Result (dBuV/m)	Limit Line (dBuV/m)	Over Limit (dB)	polarization
2441.65	84.10	9.75	93.85	114.00	-20.15	Vertical
4883.30	26.14	15.27	41.41	74.00	-32.59	Vertical
7324.95	31.52	18.09	49.61	74.00	-24.39	Vertical
9766.60	28.80	23.76	52.56	74.00	-21.44	Vertical
12208.25	*			74.00		Vertical
14649.90	*			74.00		Vertical
2441.65	80.22	9.75	89.97	114.00	-24.03	Horizontal
4883.30	25.56	15.27	40.83	74.00	-33.17	Horizontal
7324.95	31.89	18.09	49.98	74.00	-24.02	Horizontal
9766.60	31.04	23.76	54.80	74.00	-19.20	Horizontal
12208.25	*			74.00		Horizontal
14649.90	*			74.00		Horizontal
Average value:						
Frequency (MHz)	Reading (dBuV)	Factor (dB/m)	Result (dBuV/m)	Limit (dBuV/m)	Over Limit (dB)	polarization
2441.65	71.78	9.75	81.53	94.00	-12.47	Vertical
4883.30	17.30	15.27	32.57	54.00	-21.43	Vertical
7324.95	15.29	18.09	33.38	54.00	-20.62	Vertical
9766.60	17.37	23.76	41.13	54.00	-12.87	Vertical
12208.25	*			54.00		Vertical
14649.90	*			54.00		Vertical
2441.65	69.11	9.75	78.86	94.00	-15.14	Horizontal
4883.30	13.08	15.27	28.35	54.00	-25.65	Horizontal
7324.95	16.26	18.09	34.35	54.00	-19.65	Horizontal
9766.60	17.34	23.76	41.10	54.00	-12.90	Horizontal
12208.25	*			54.00		Horizontal
14649.90	*			54.00		Horizontal

Remark:

- 1.Result =Reading + Factor
2. "*" means the test results were attenuated more than 20dB below the permissible limits, so the results don't record in the report.

Test Results (1GHz-25GHz)

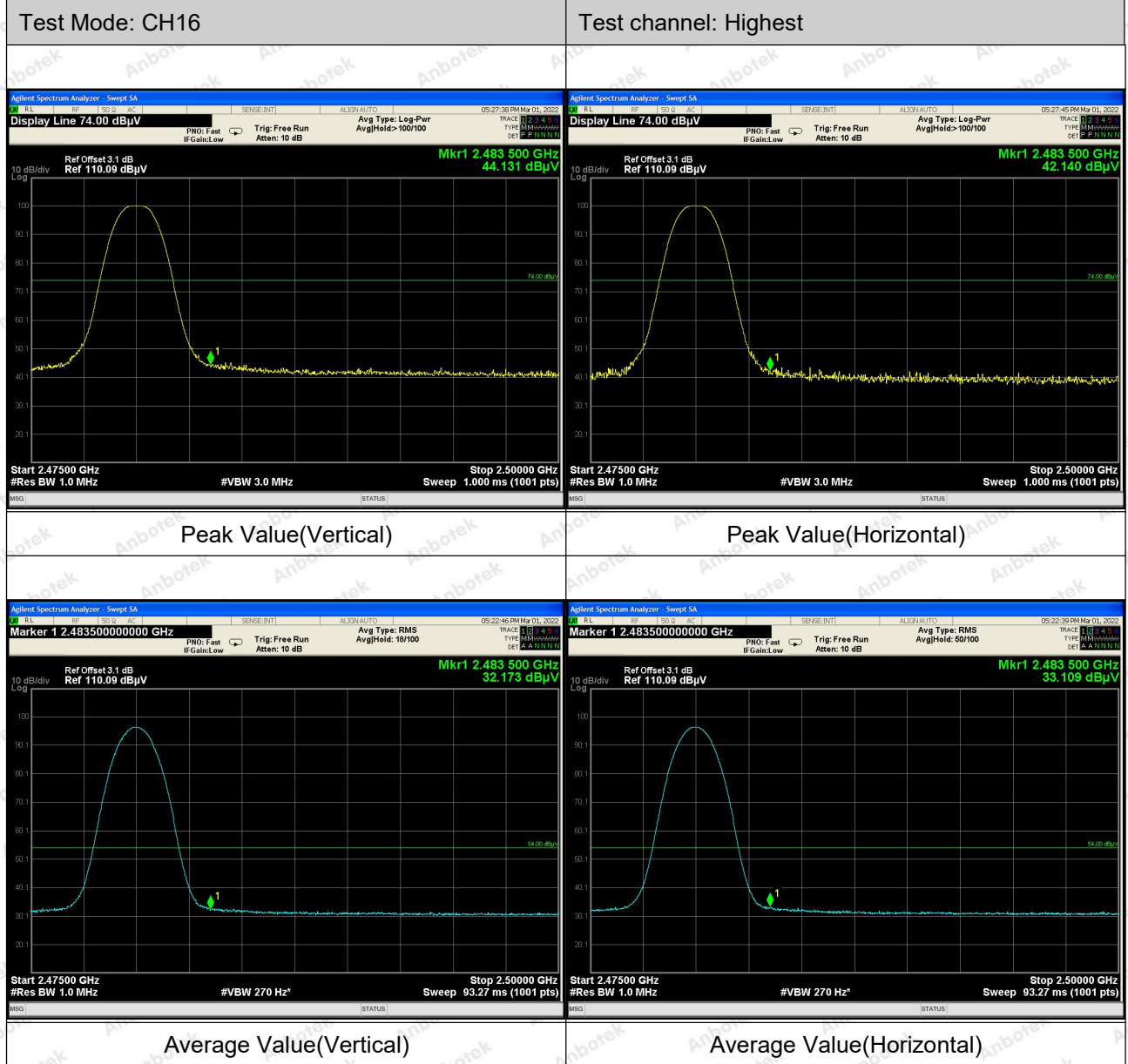
Test channel: Highest						
Peak value:						
Frequency (MHz)	Reading (dBuV)	Factor (dB/m)	Result (dBuV/m)	Limit Line (dBuV/m)	Over Limit (dB)	polarization
2480.65	81.94	9.75	91.69	114.00	-22.31	Vertical
4961.30	30.52	15.27	45.79	74.00	-28.22	Vertical
7441.95	27.54	18.09	45.63	74.00	-28.37	Vertical
9922.60	31.52	23.76	55.28	74.00	-18.72	Vertical
12403.25	*			74.00		Vertical
14883.90	*			74.00		Vertical
2480.65	82.53	9.75	92.28	114.00	-21.72	Horizontal
4961.30	25.89	15.27	41.16	74.00	-32.84	Horizontal
7441.95	31.46	18.09	49.55	74.00	-24.45	Horizontal
9922.60	27.23	23.76	50.99	74.00	-23.01	Horizontal
12403.25	*			74.00		Horizontal
14883.90	*			74.00		Horizontal
Average value:						
Frequency (MHz)	Reading (dBuV)	Factor (dB/m)	Result (dBuV/m)	Limit (dBuV/m)	Over Limit (dB)	polarization
2480.65	73.50	9.75	83.25	94.00	-10.75	Vertical
4961.30	14.95	15.27	30.22	54.00	-23.79	Vertical
7441.95	17.98	18.09	36.07	54.00	-17.93	Vertical
9922.60	15.73	23.76	39.49	54.00	-14.51	Vertical
12403.25	*			54.00		Vertical
14883.90	*			54.00		Vertical
2480.65	70.90	9.75	80.65	94.00	-13.35	Horizontal
4961.30	13.32	15.27	28.59	54.00	-25.41	Horizontal
7441.95	20.78	18.09	38.87	54.00	-15.13	Horizontal
9922.60	18.73	23.76	42.49	54.00	-11.51	Horizontal
12403.25	*			54.00		Horizontal
14883.90	*			54.00		Horizontal

Remark:

- 1.Result =Reading + Factor
2. "*" means the test results were attenuated more than 20dB below the permissible limits, so the results don't record in the report.

Radiated Band Edge:



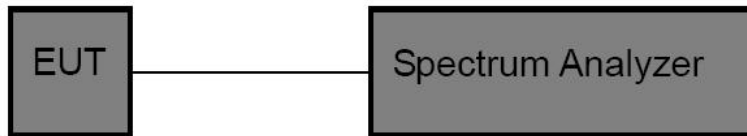


5. 20dB Bandwidth Test

5.1. Test Standard and Limit

Test Standard	FCC Part15 C Section 15.249
---------------	-----------------------------

5.2. Test Setup



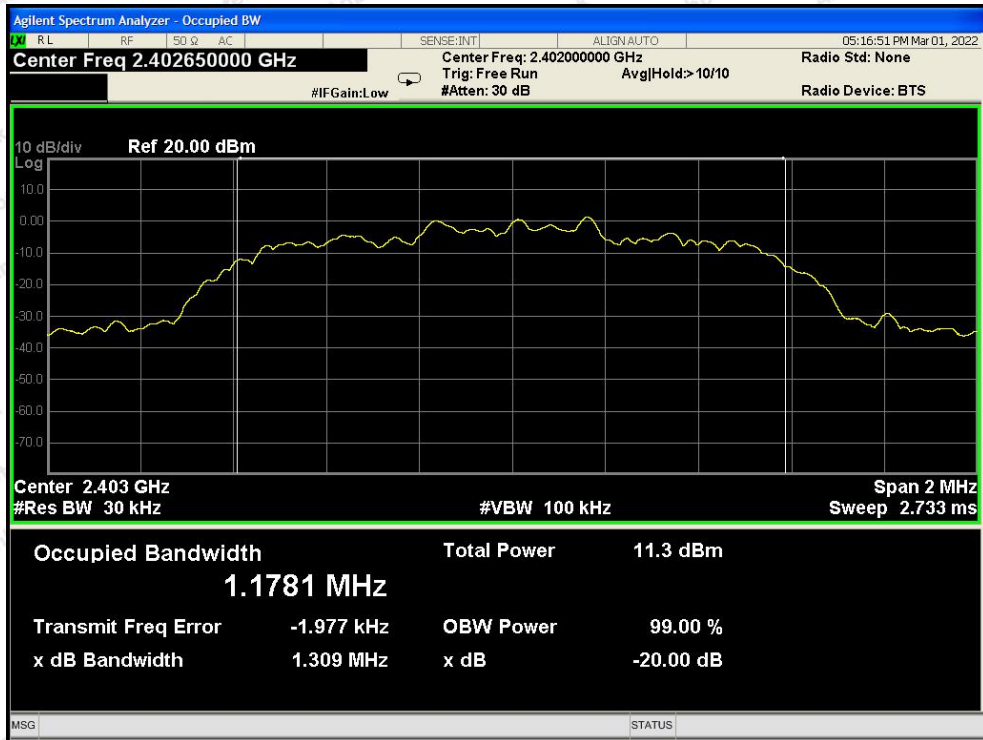
5.3. Test Procedure

1. Place the EUT on the table and set it in the transmitting mode.
2. Remove the antenna from the EUT and then connect a low loss RF cable from the antenna port to the spectrum analyzer.
3. Set the spectrum analyzer as:
 RBW = 30kHz, VBW≥3*RBW =100kHz,
 Detector= Average
 Trace mode= Max hold.
 Sweep- auto couple.
4. Mark the peak frequency and -20dB (upper and lower) frequency.
5. Repeat until all the rest channels are investigated.

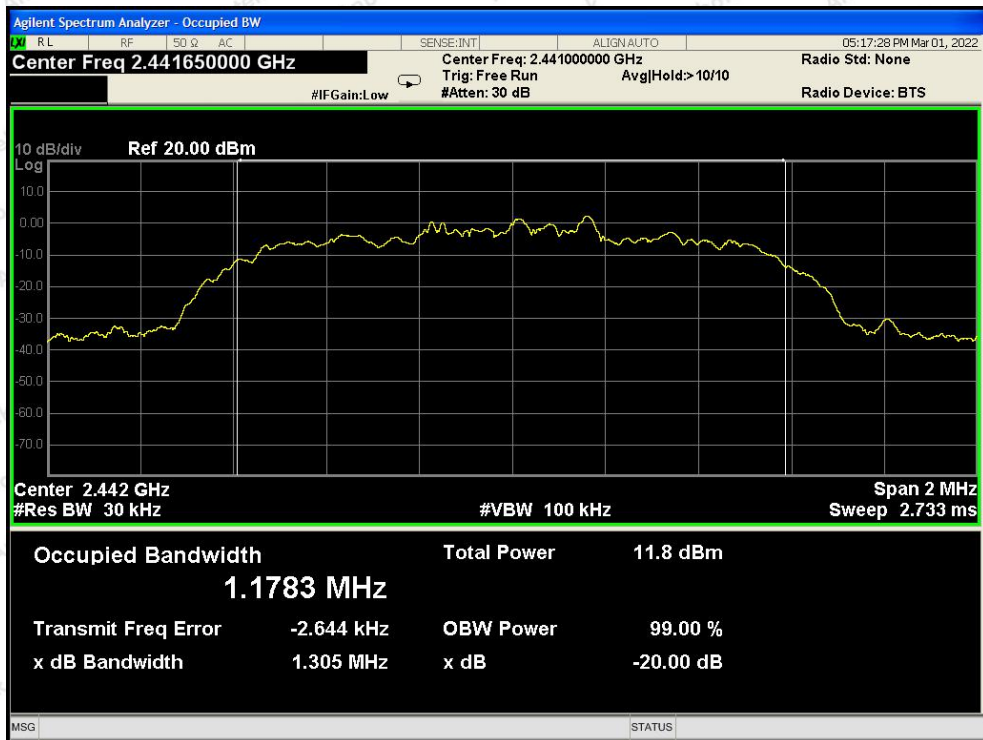
5.4. Test Data

Test Item	: 20dB Bandwidth	Test Mode	: Mode 1
Test Voltage	: DC 3V	Temperature	: 22.4°C
Test Result	: PASS	Humidity	: 55%RH

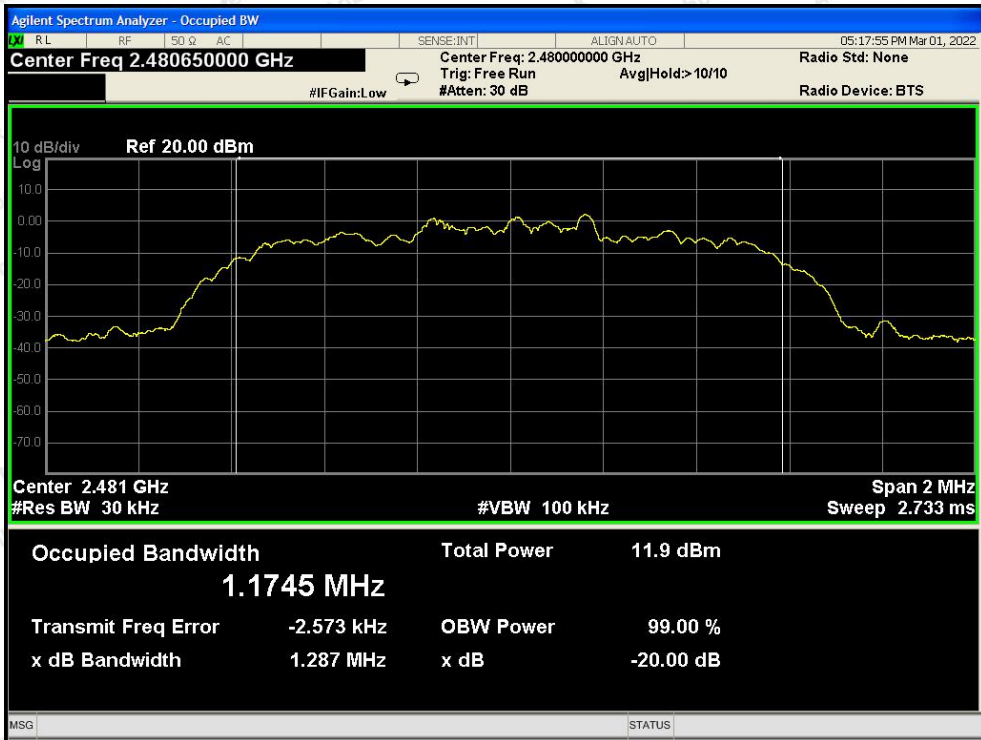
Frequency (MHz)	Bandwidth (kHz)	Result
2403.65MHZ	1309	PASS
2441.65MHZ	1305	PASS
2480.65MHZ	1287	PASS



Test Mode: Low



Test Mode: Middle



Test Mode: High

6. Antenna Requirement

6.1. Test Standard and Requirement

Test Standard	FCC Part15 Section 15.203
Requirement	1) 15.203 requirement: An intentional radiator shall be designed to ensure that no antenna other than that furnished by the responsible party shall be used with the device. The use of a permanently attached antenna or of an antenna that uses a unique coupling to the intentional radiator, the manufacturer may design the unit so that a broken antenna can be replaced by the user, but the use of a standard antenna jack or electrical connector is prohibited.

6.2. Antenna Connected Construction

The antenna is a PCB Antenna which permanently attached, and the best case gain of the antenna is 0 dBi. It complies with the standard requirement.



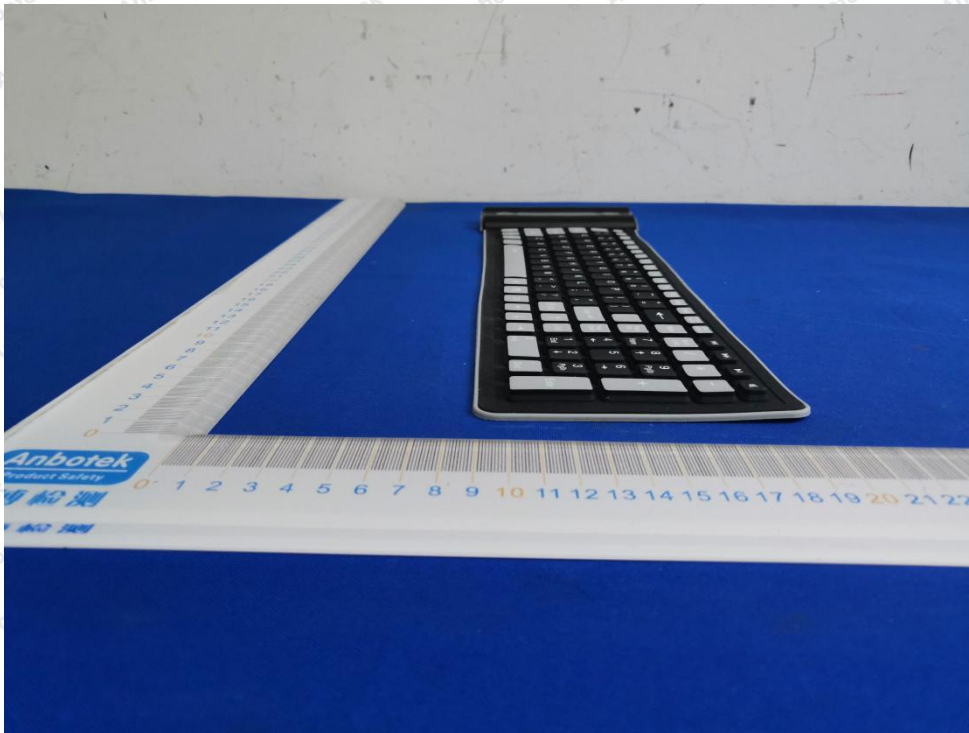
APPENDIX I -- TEST SETUP PHOTOGRAPH

Photo of Radiation Emission Test



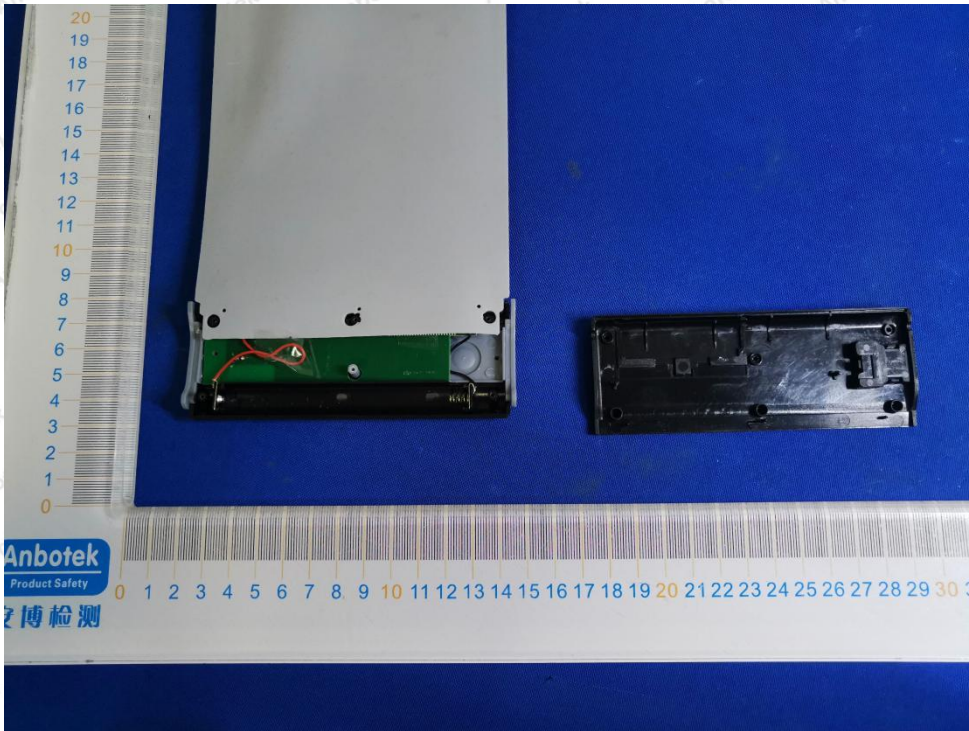
APPENDIX II -- EXTERNAL PHOTOGRAPH

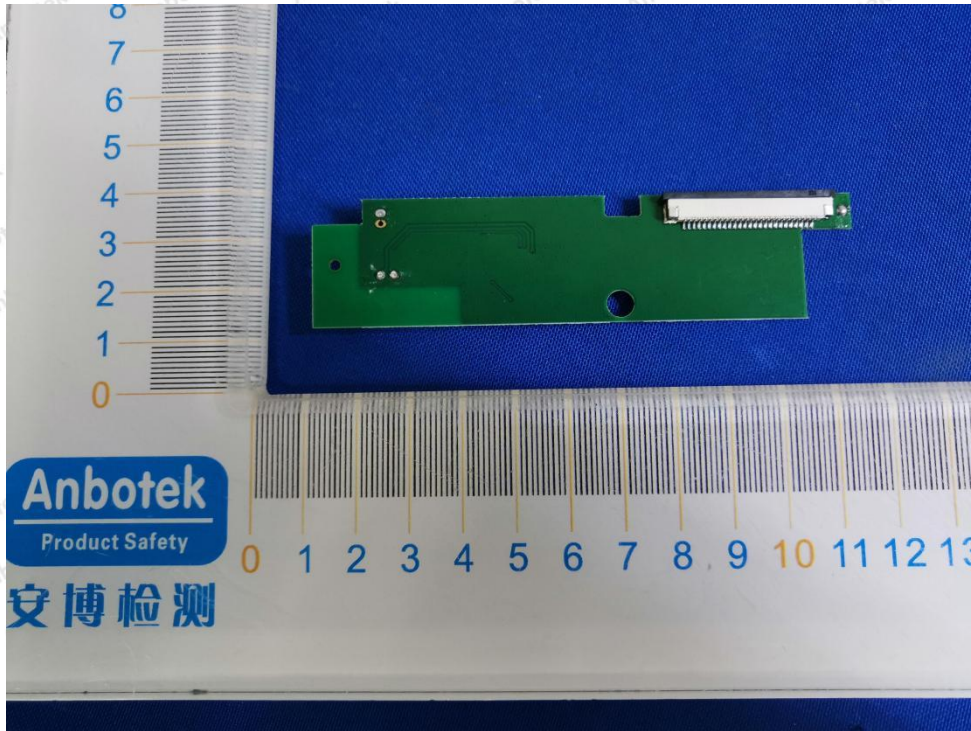




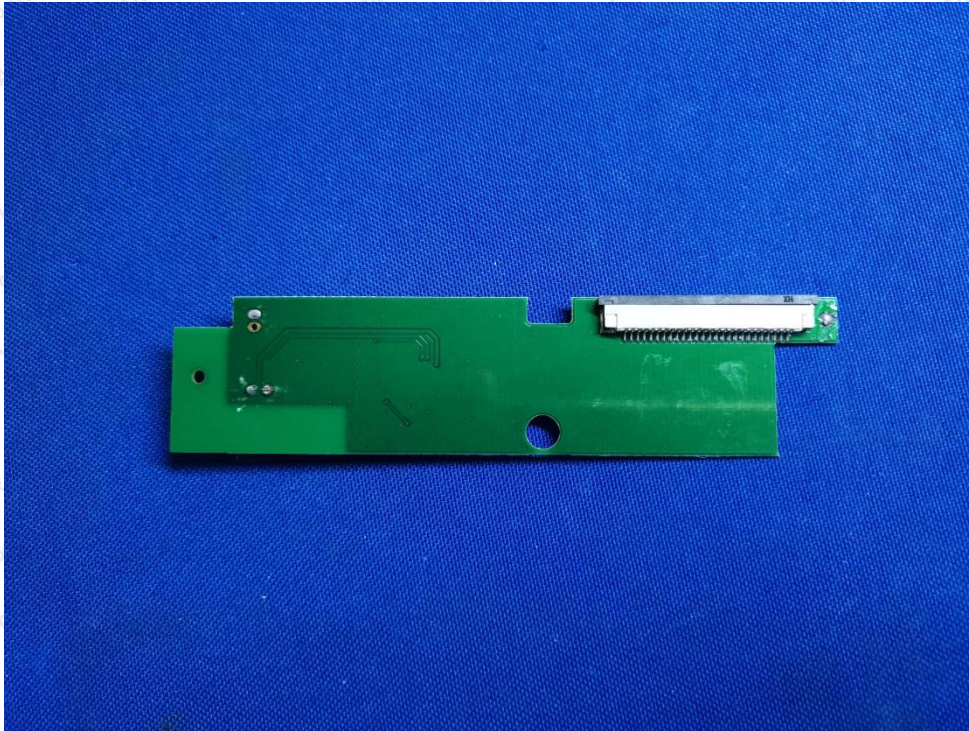
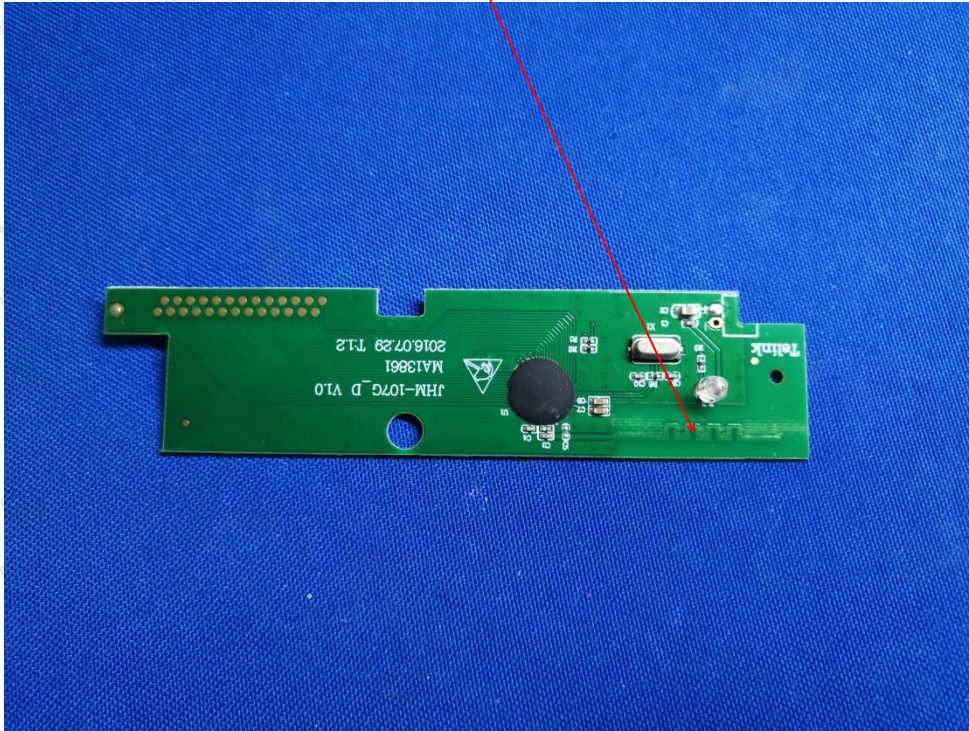


APPENDIX III -- INTERNAL PHOTOGRAPH





ANT



----- End of Report -----