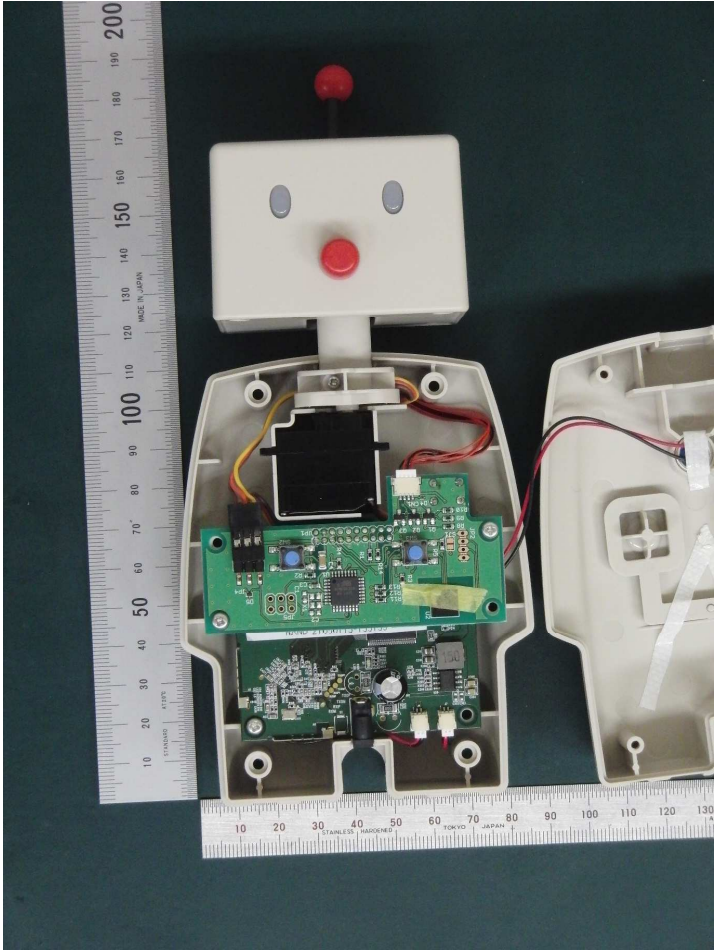
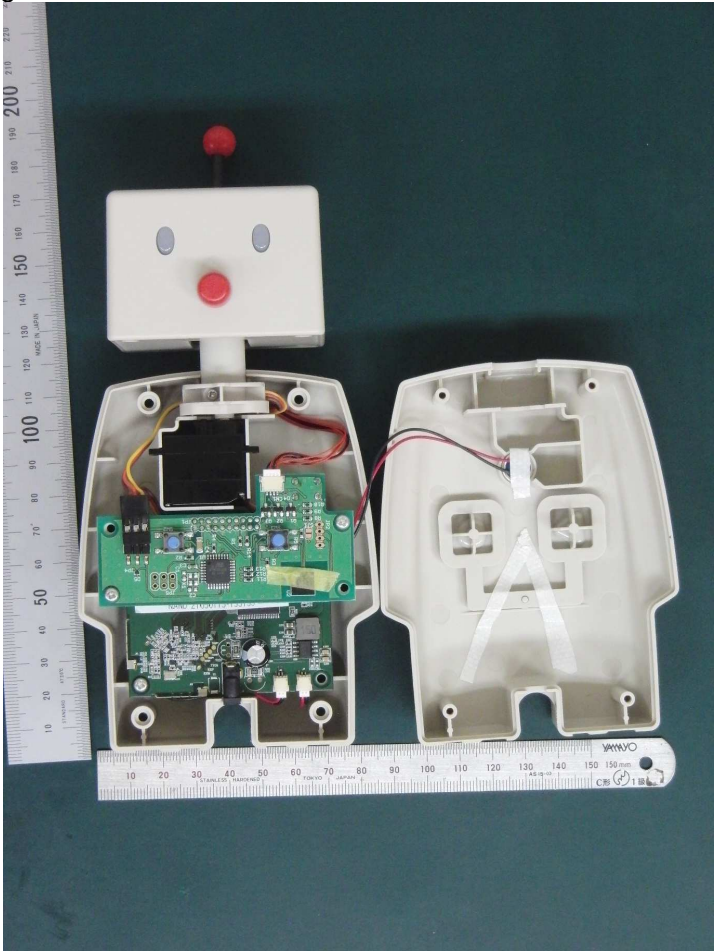
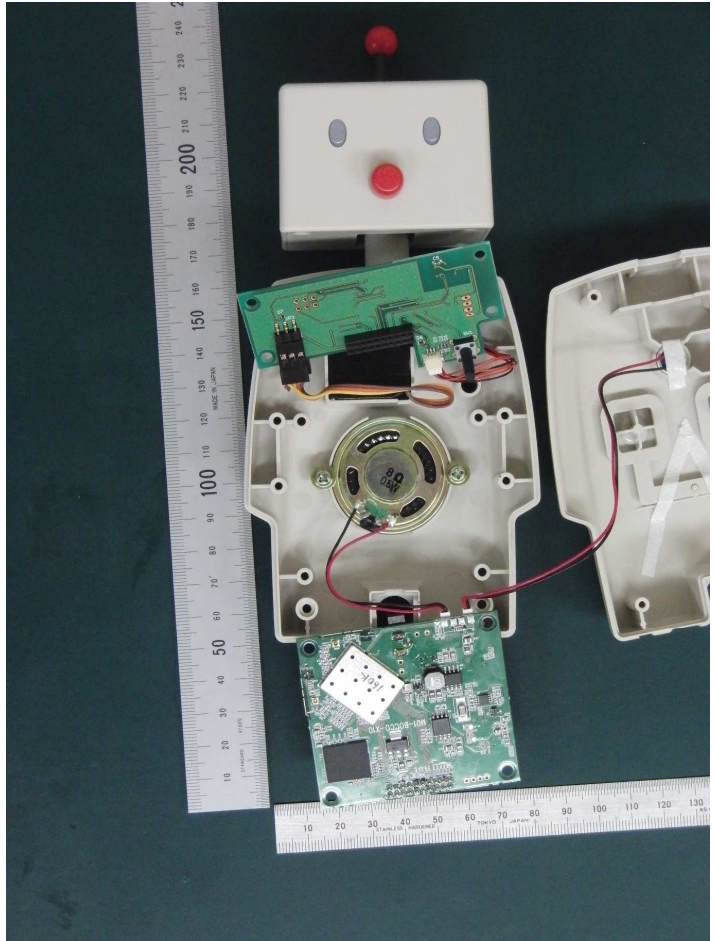
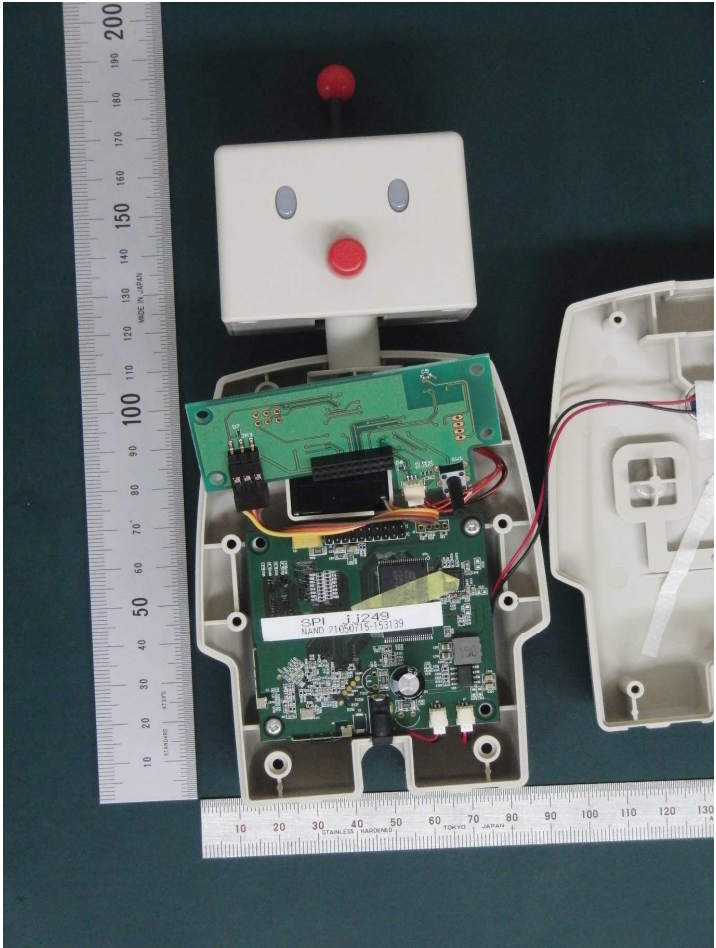
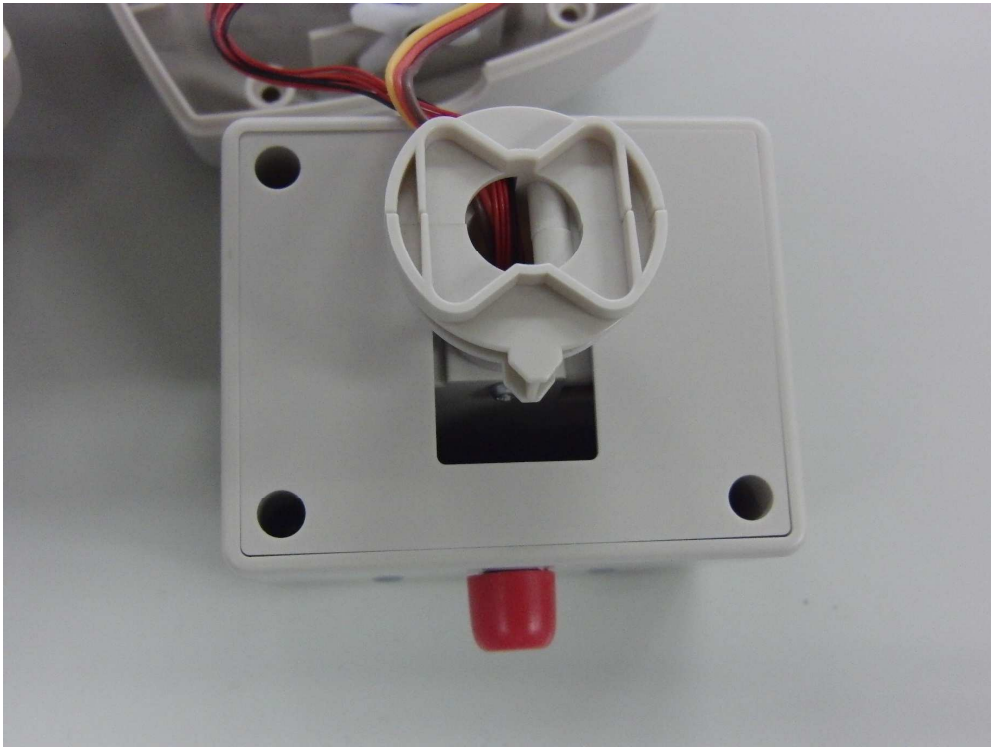


BOCCO Internal Photos

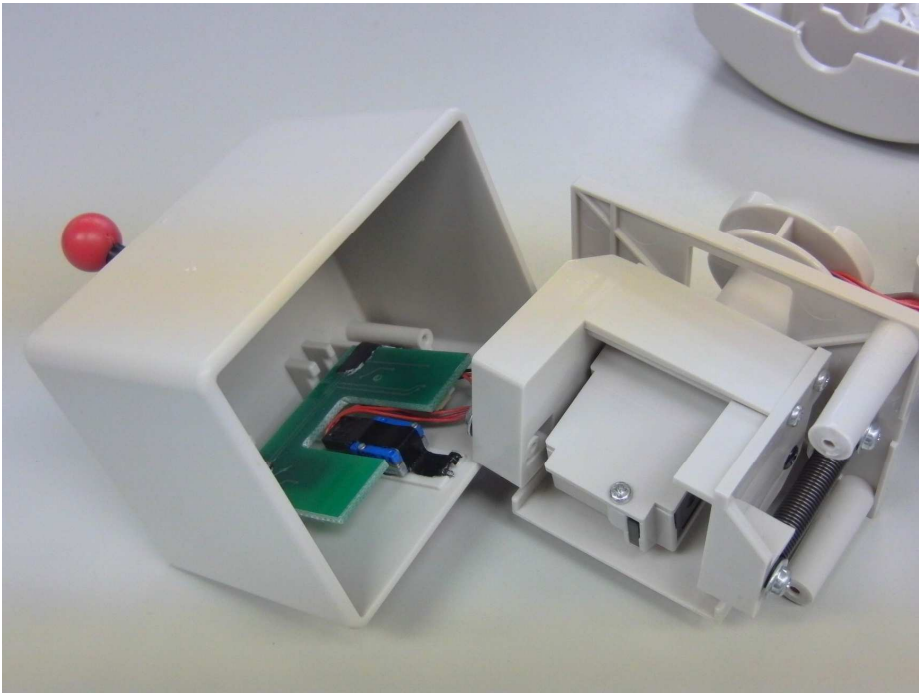


BOCCO Internal Photos





BOCCO head part, bottom view



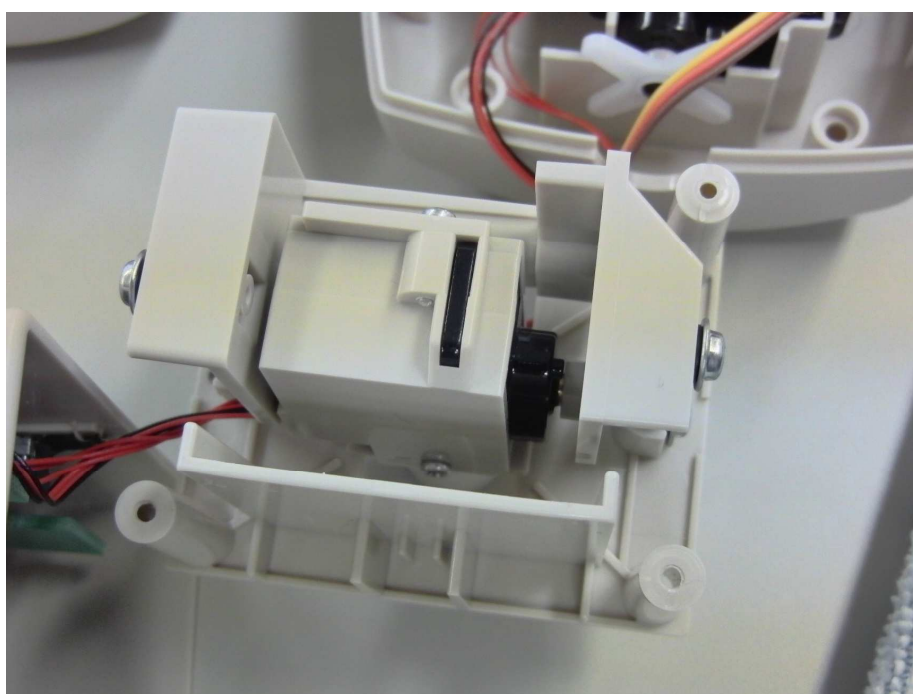
Inside of head part



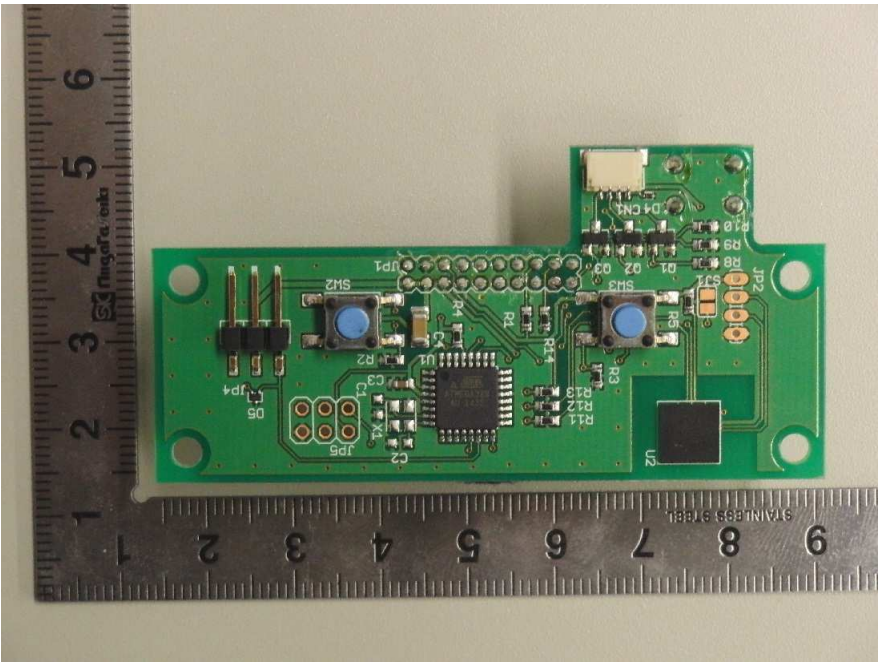
## BOCCO Internal Photos



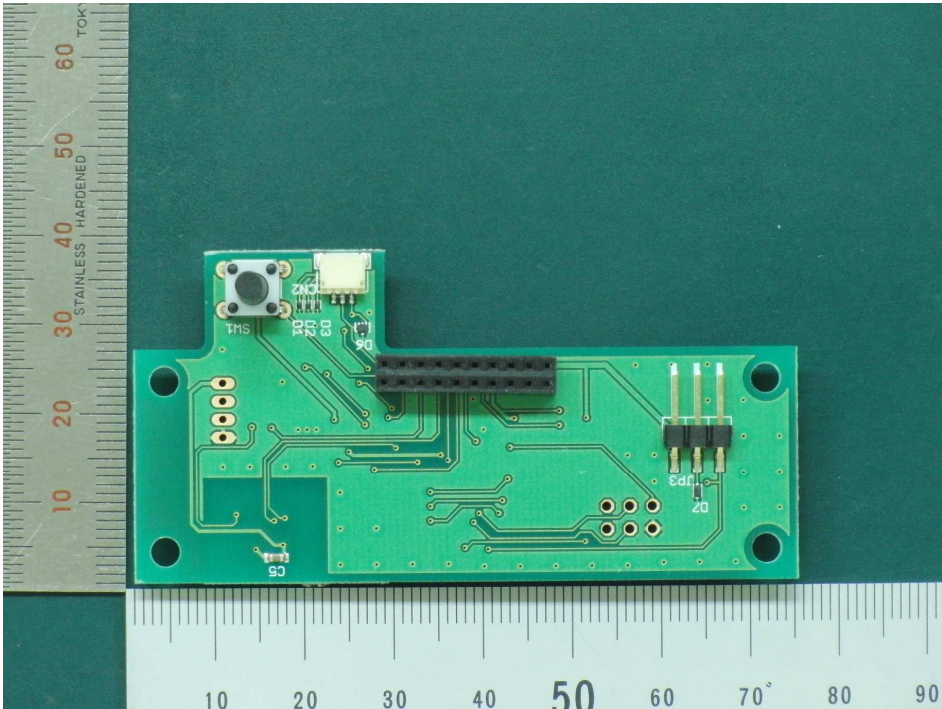
LED board (eyes) and potentiometer (nose)



Servomotor for head movement

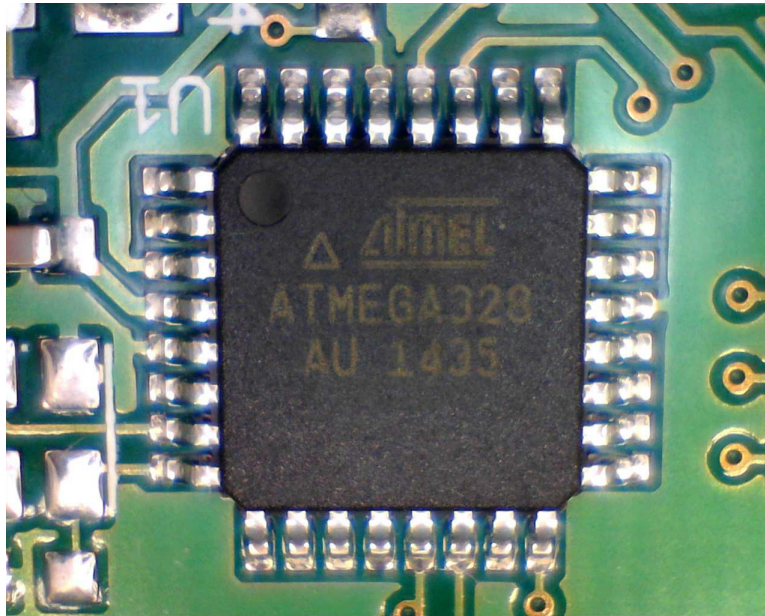


BOCCO Sub Board Side A

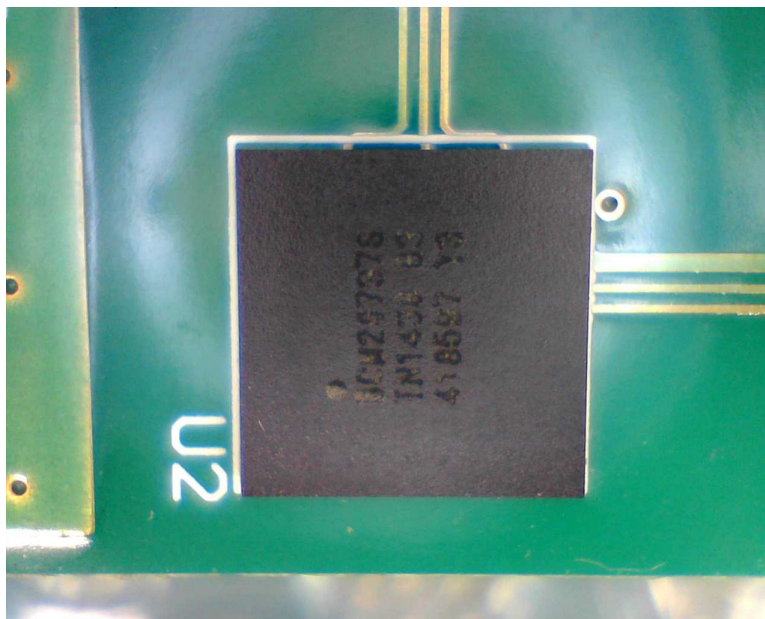


BOCCO Sub Board Side B

## BOCCO Internal Photos



BOCCO Sub Board Side A - U1



BOCCO Sub Board Side A - U2 - Bluetooth Module

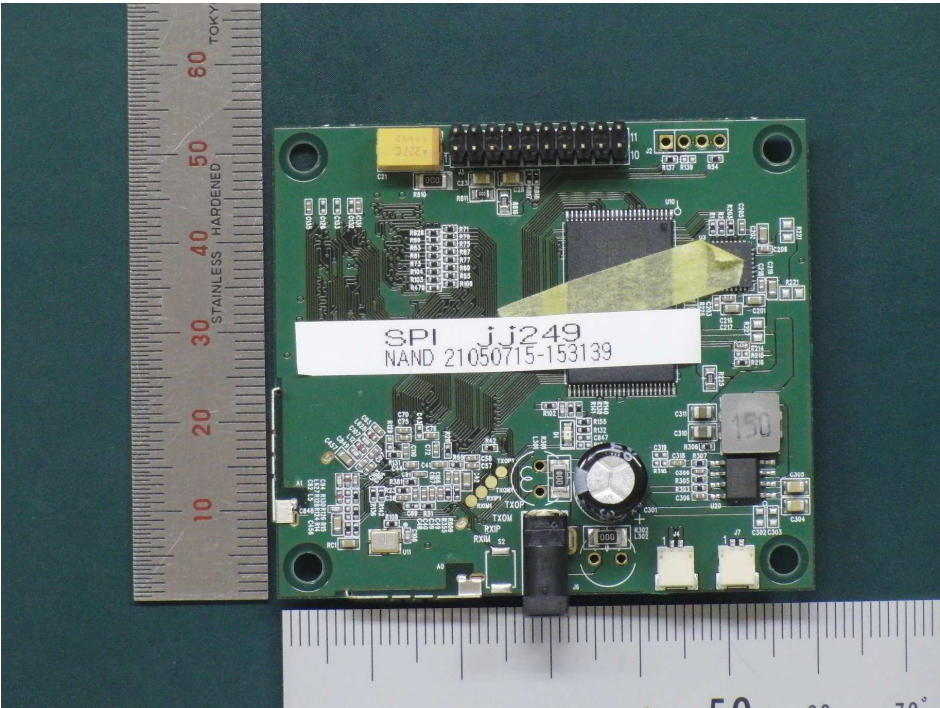
## BROADCOM BLUETOOTH MODULE

FCC ID: 2AFXT-RB002-B

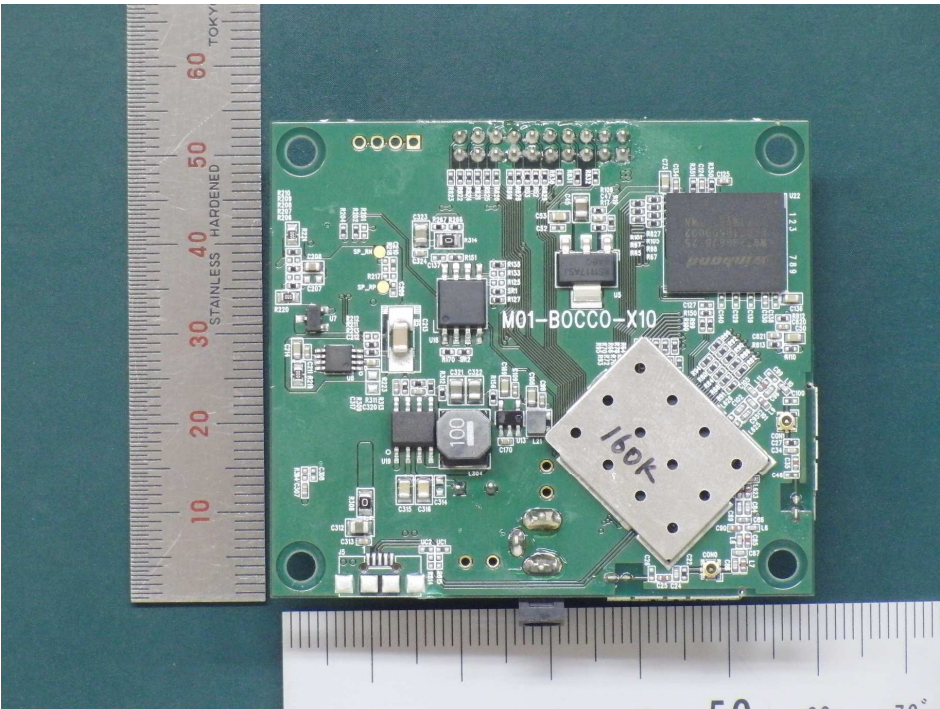
This module is only for Communication Robot (YE-RB002G/YE-RB002T) and does not supply to other manufacture.

Due to the model size the FCC identifier is displayed in host device (YE-RB002G/YE-RB002T) only. (Display "Contains FCC ID: 2AFXT-RB002-B" in host device) and can not be displayed on the modules label due to the limited size.(7.0mm\*7.0mm)

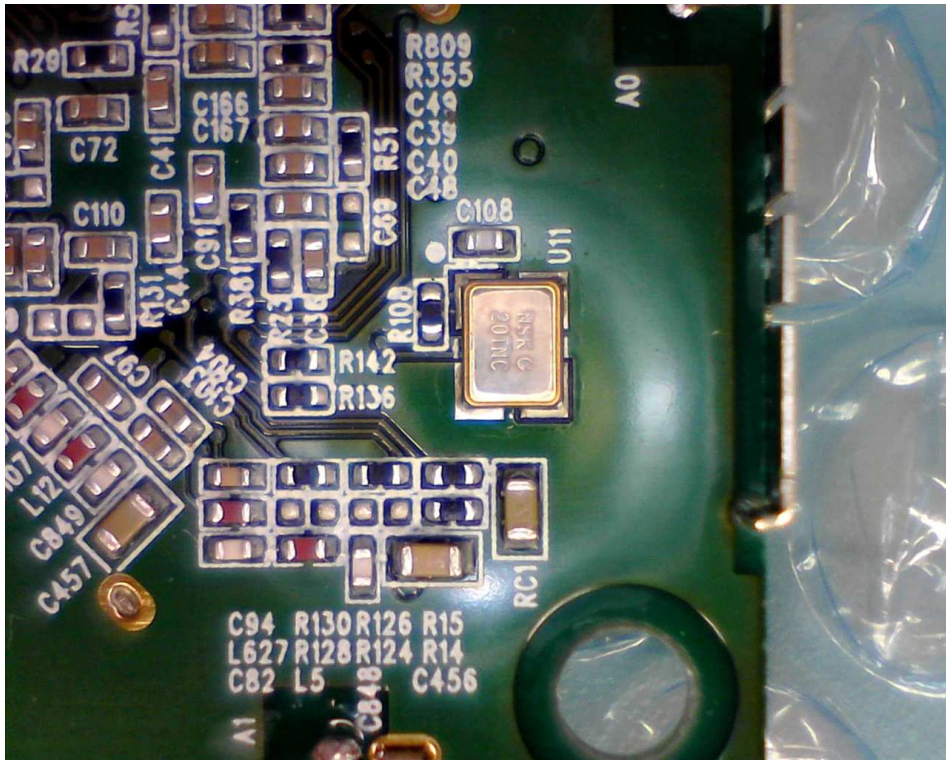




BOCCO Main Board Side A



BOCCO Main Board Side B

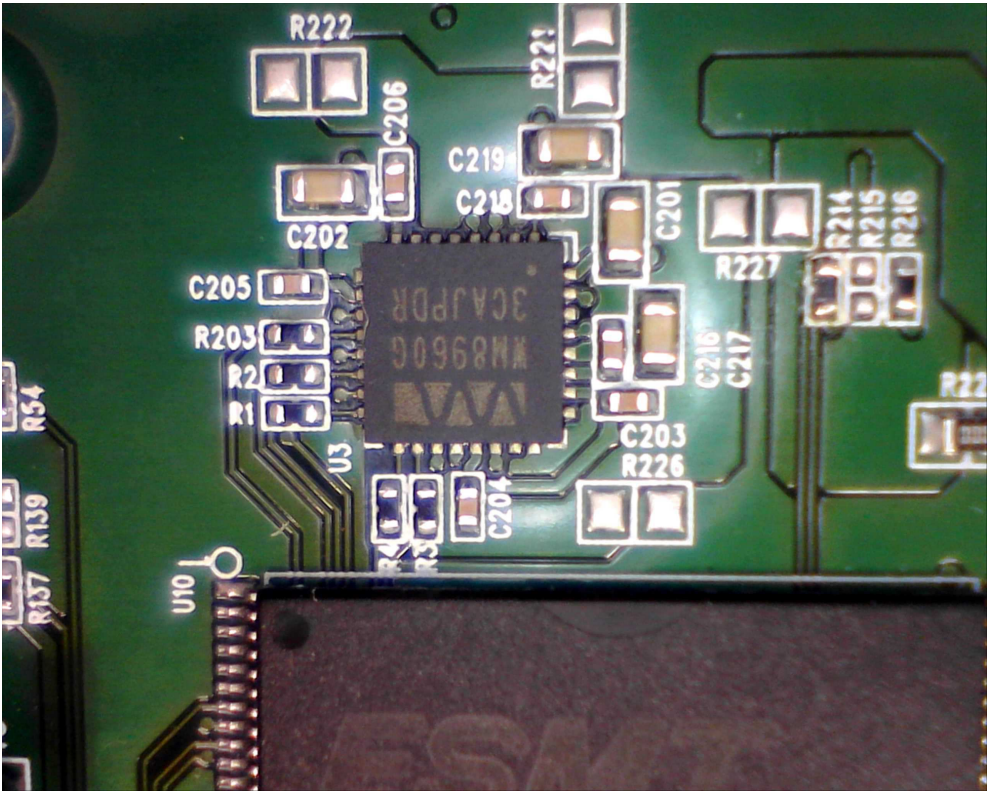


BOCCO Main Board Side A - U11

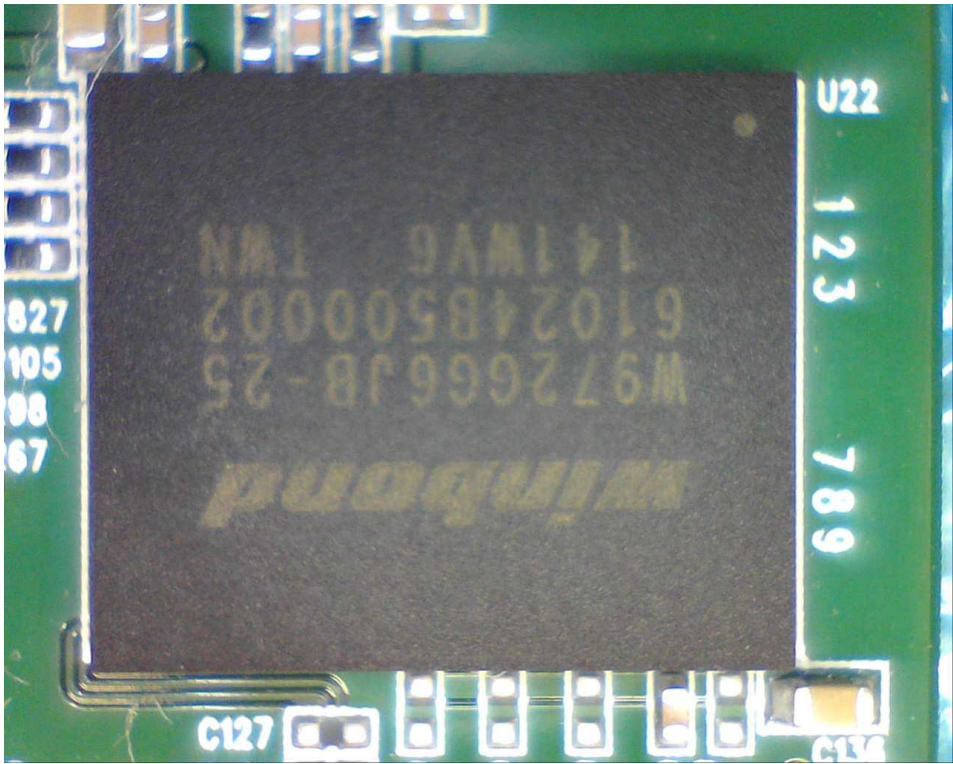


BOCCO Main Board Side A - U10





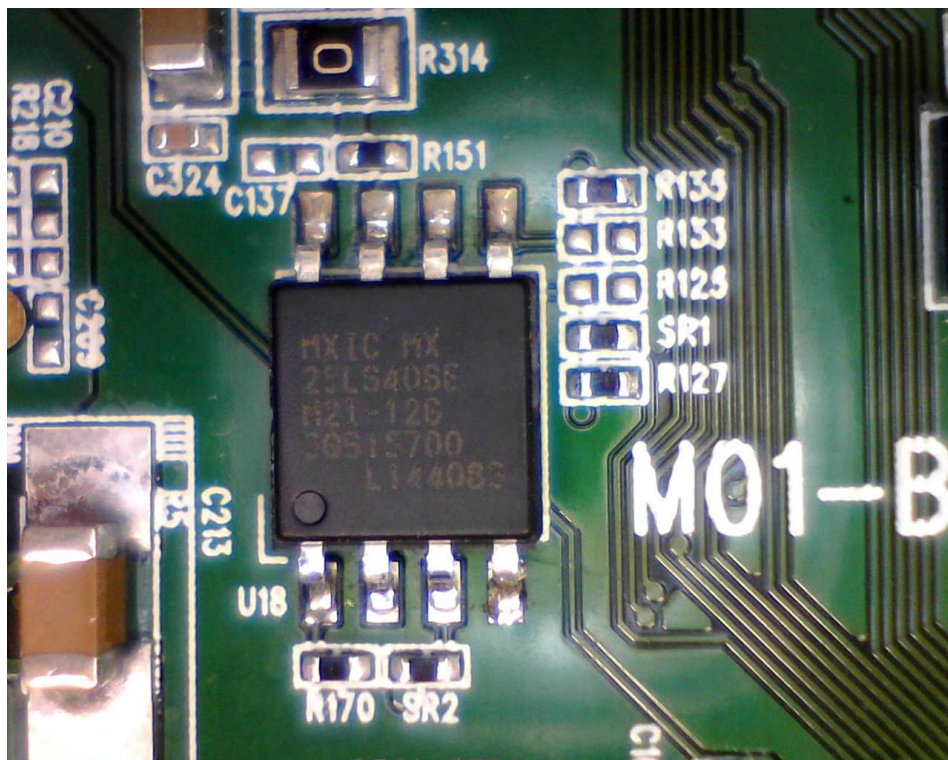
BOCCO Main Board Side A - U3



BOCCO Main Board Side B - U22

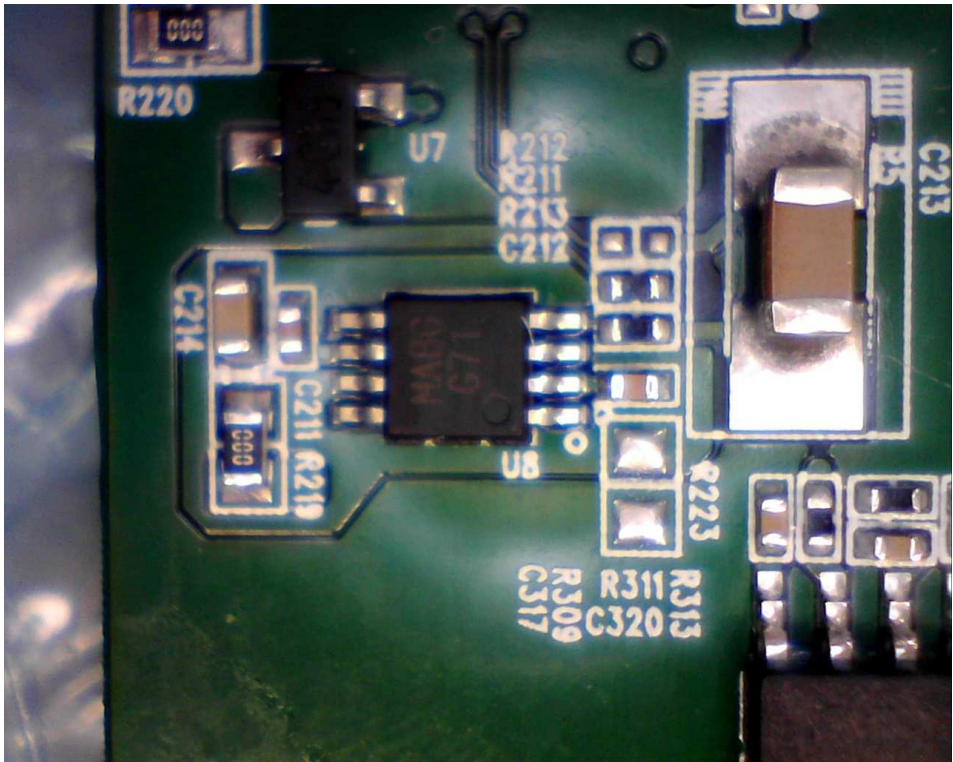


BOCCO Main Board Side B - U5

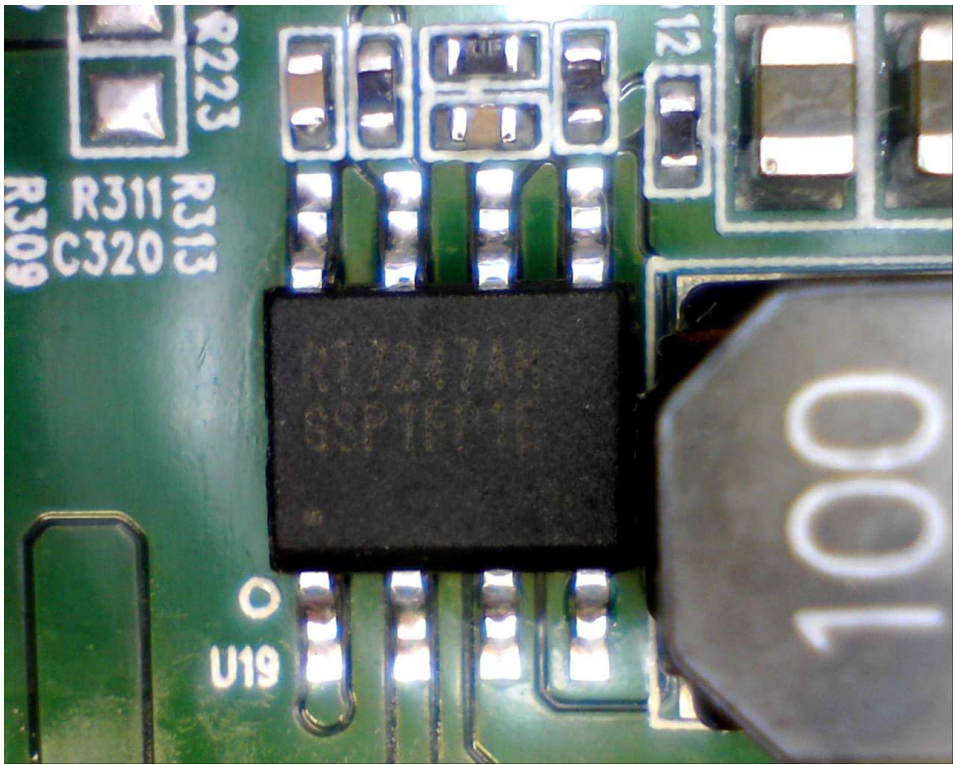


BOCCO Main Board Side B - U18

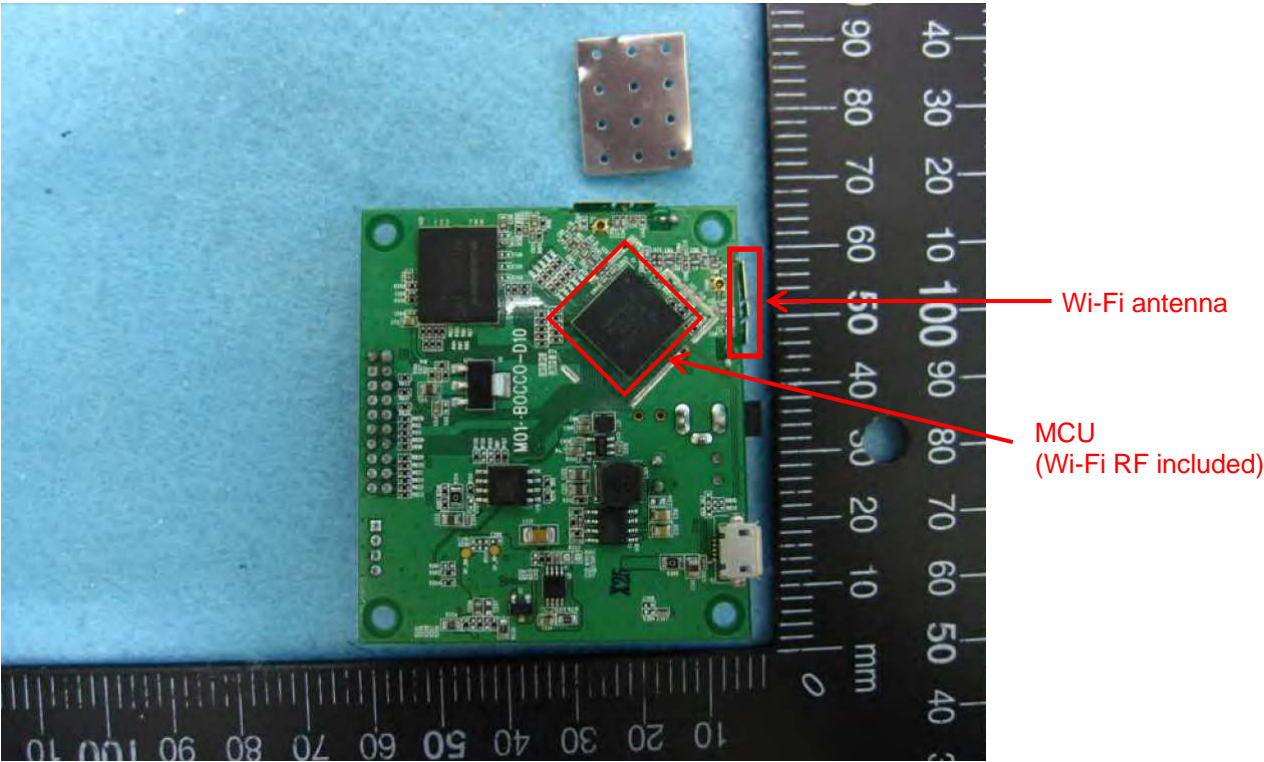




BOCCO Main Board Side B - U8



BOCCO Main Board Side B - U19



BOCCO Main Board Side B - Shield off



BOCCO Main Board Side B - U1